

# Attendance & Engagement System of Support & Professional Communities

# Talk Tuesdays

Developed by the CSDE in collaboration with SERC

**10/15/2024**



# Today's Agenda

## **Welcome**

Christine Kuehlewind, Ann Marie Cordisco, and Holli Ryan,  
State Education Resource Center (SERC)

## **What's New at CSDE and Partners**

Kari Sullivan Custer, Attendance & Engagement Consultant, CSDE  
Jay Brown, Bureau of Special Education Consultant (Academic Office), CSDE

## **Attendance & Engagement: CT Department of Children and Families- Careline**

Lisa Daymonde, Careline Director, CT Dept of Children and Families  
Vanessa Hudson, Careline Program Supervisor, CT Dept of Children and Families

## **Upcoming Attendance & Engagement Meetings**

Christine Kuehlewind, SERC



# Welcome

## September 16, 2024

- [NEW: EdSight Dashboard on Connecticut's Gifted and Talented Students](#)
- [Attendance Webinar for District Leaders](#)
- [Regional Early College Summits](#)

## September 19, 2024

- New Attendance Reports in **EdSight Secure**
- [Sharing Hispanic Heritage History Month PD Playlist](#)

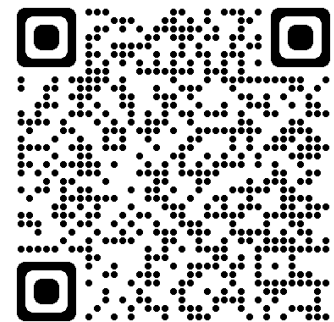
## September 26, 2024

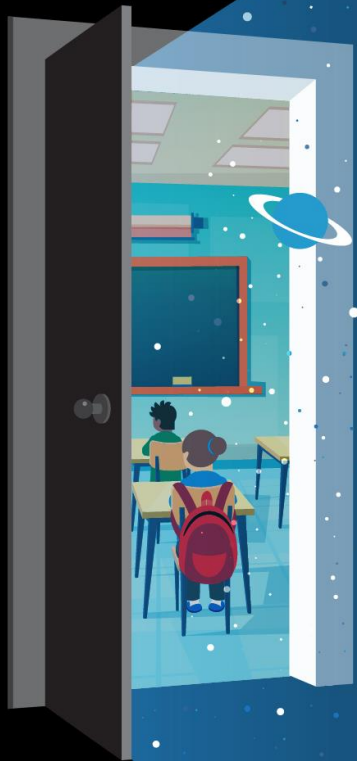
- [Nominations for the 2025 U.S. Presidential Scholar Program](#)
- [CSDE 2024 Career and Technical Education \(CTE\) Summit](#)
- [The 2025 CT Teacher of the Year Ceremony](#)

## September 29, 2024

- [New Contact: CSDE K-3 Literacy Assessment Contact - assign by October 21](#)
- [National Manufacturing Month PD Playlist for Educators](#)

[Superintendent's Digest](#)





# A UNIVERSE OF OPPORTUNITIES



CONNECTICUT  
Education

**2024-2025**

## Talk Tuesday

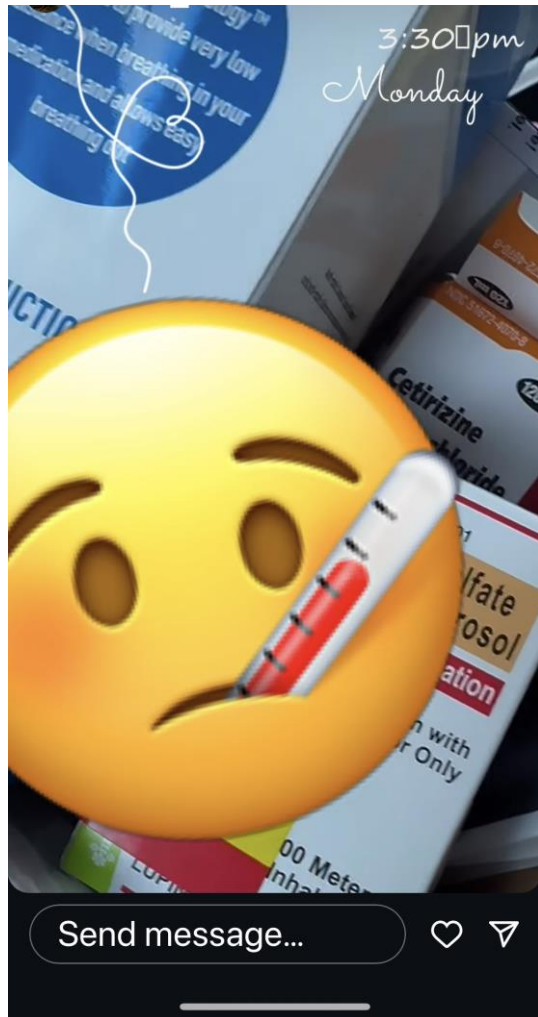
Kari Sullivan Custer

September 17, 2024

Connecticut State  
Department of Education



# School is in Full Swing!



- We're now **7 weeks into the school year**, and as the weather gets colder, both physical and mental health challenges can start to affect student attendance.
- **Seasonal illnesses** like colds and the flu can impact attendance, and with shorter days and less sunlight, some students and families may experience an increase in stress, anxiety, or seasonal affective issues.
- It's important to **check in with families and offer support for both physical health and mental well-being** to keep students engaged and attending regularly.
- Let's work together to ensure every day counts!



# Strategies to Prevent Absences

## Promote Health and Wellness:

- Flu Shot Clinics: Offer flu shots and vaccinations.
- Healthy Habits Campaigns: Promote hygiene practices to reduce illness.

## Mental Health Support:

- Counseling and Check-ins: Provide social-emotional support.
- Workshops: Address stress management and coping strategies.

## Family Outreach = RELATIONSHIPS

- Frequent Communication: Remind families about attendance and health protocols. **Connect and understand what is happening with families.**
- Offer Resources: Share information on healthcare and mental health services.

## Flexible Attendance Policies:

- Catch-Up Plans: Help students catch up after absences.
- Remind families when is too sick to come to school!

## Incentivize Attendance:

- Attendance Challenges: Motivate students with fun incentives.
- Positive Reinforcement: Recognize and reward good attendance.



When is sick too sick  
for school?

→ School is better with you, even if you're a little under the weather!

When is sick too sick for school?

When is sick too sick too sick? - Spanish



# CSDE Sponsored Supports to Districts Addressing Student Health and Wellness



# Talk Tuesday: Focus on Health & Safety

October 29, 2024



- Join us for a special edition of [Talk Tuesday](#) on October 29th, hosted by CSDE leadership, where we will focus on the critical topic of Student Health and Safety.
- Epidemiology partners from the State Department of Public Health (DPH) will be presenting timely information regarding respiratory viral diseases and more!
- We invite our regular Talk Tuesday audience of attendance leads and also strongly encourage district and school administrators, school health and nursing personnel, and local health partners to participate in this important conversation. **If already registered for Talk Tuesdays, no need to re-register.**
- The session will be held virtually from 10:00 to 11:00 a.m. on Tuesday, October 29th. Register now at <https://serc.info/healthandsafety24>





# Supporting Your Child’s Health and Well-being During the School Year

A Three-Part Series of Virtual House Calls for Parents and Families



The CSDE is presenting a three-part webinar series for parents and families. *If you can’t attend the live session, please register to receive a link to the recording.*

**Part 1: Supporting Child and Family Wellness with Dr. Robert Keder, MD, Developmental Pediatrician from Connecticut Children’s Hospital:** Understanding challenging behaviors and child development, plus practical strategies to create supportive environments for your child’s growth and success. **Date:** Thursday, October 10, 2024, 5:00 p.m.–6:00 p.m. Register: <https://serc.info/vhcpart1>

**Part 2: Preparing Your Family for Cold and Flu Season with Dr. Sten Vermund, MD, PhD, from Yale School of Public Health and Global Virus Network:** Risk factors and prevention strategies to stop the spread of illnesses, including colds, Influenza, RSV, and COVID-19. **Date:** Thursday, October 24, 2024, 5:00 p.m.–6:00 p.m. Register: <https://serc.info/vhcpart2>

**Part 3: Protecting Our Youth: A Community Approach to Suicide Prevention with A Panel of Experts from the Department of Children and Families (DCF) and the Department of Mental Health and Addiction Services (DMHAS)** Thursday, November 7, 2024, 5:00 p.m.–6:00 p.m. Register: <https://serc.info/vhcpart3>

[Supporting Your Child’s Health and Well-being During the School Year \(mcusercontent.com\)](https://mcusercontent.com)





# Featured Speakers

## **Attendance & Engagement: CT Department of Children and Families- Careline**

Lisa Daymonde,  
Careline Director,  
(CT Department of Children and Families)

Vanessa Hudson,  
Careline Program Supervisor  
(CT Department of Children and Families)

CT DEPARTMENT OF  
CHILDREN AND  
FAMILIES



# Statutory Mandates and Strategic Goals

Child Protection  
Children's Mental Health and  
Substance Abuse  
Prevention

## CT Department of Children and Families

Embracing the wisdom of families with lived experience

### Our Vision

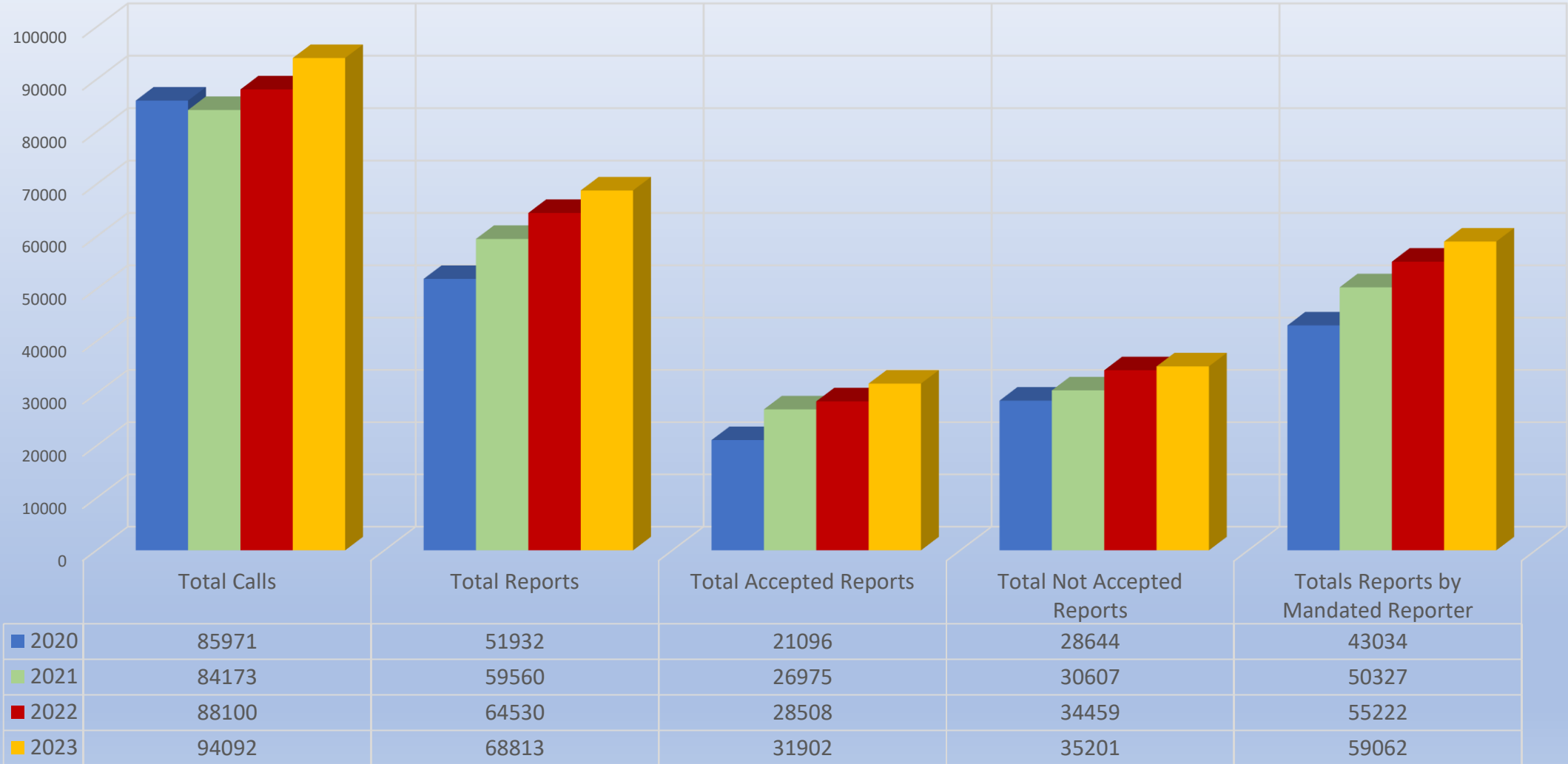
*CT's Children are safe & sound within loving and supportive families.*



CARELINE IS A  
24/7/365 DAY  
OPERATION

- CALL CENTER
- SIU-Special Investigation Unit
- EPIU-Education Professionals Investigaton Unit
- CPS BGC-Background Child Unit
- AFTER HOURS RESPONSE

## Annual Totals

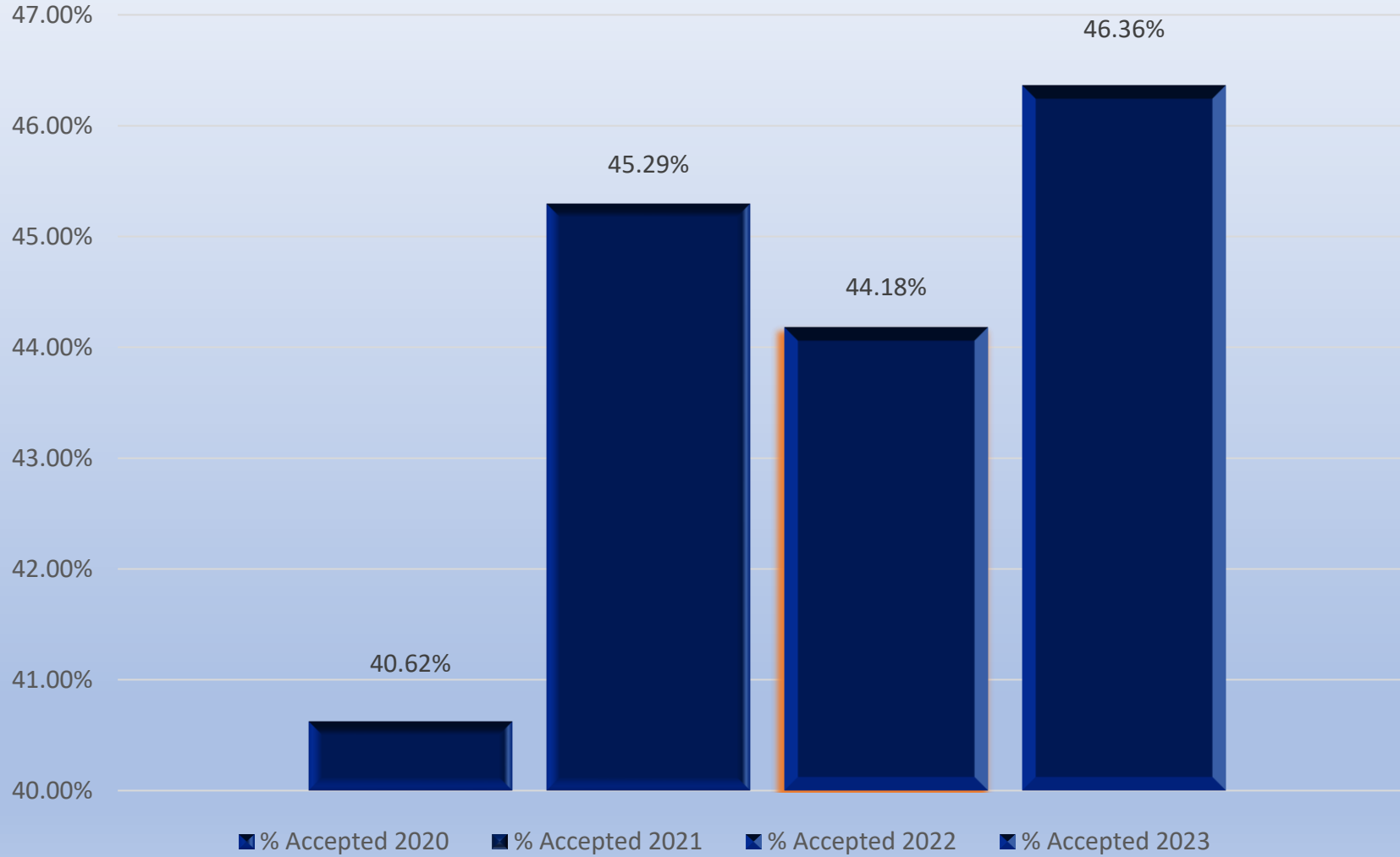


## 2023 CARELINE INBOUND CALLS [GENERAL/HOSPITAL/POLICE] + ONLINE REPORTS DATA

Monthly Inbound Calls [answered+abandon+caller disconnected]		Answered Calls			Total Abandon/Caller Disconnected		Monthly Abandon			Monthly Caller Disconnected			Online Reports	
Month	Monthly Total	General	Hospital	Police	Abandon	Caller Disconnected	General	Hospital	Police	General	Hospital	Police	Completed	Improper
<b>TOTALS</b>	<b>111448</b>	<b>63564</b>	<b>6269</b>	<b>11131</b>	<b>8673</b>	<b>21811</b>	<b>7138</b>	<b>589</b>	<b>946</b>	<b>20286</b>	<b>538</b>	<b>987</b>	<b>13128</b>	<b>210</b>
January	10163	6006	504	960	811	1882	698	43	70	1831	16	35	1214	24
February	9548	5450	540	943	941	1674	806	52	83	1610	23	41	1243	20
March	10934	6280	545	998	1213	1898	1064	60	89	1830	30	38	1530	20
April	8942	5021	539	986	747	1649	603	57	87	1586	19	44	1073	15
May	10900	6346	597	1053	970	1934	786	70	114	1861	25	48	1374	16
June	8331	4650	517	901	436	1827	317	45	74	1630	65	132	785	11
July	7817	4069	567	951	446	1784	301	49	96	1583	65	136	467	12
August	7719	4160	497	936	375	1751	246	36	93	1574	56	121	497	12
September	9822	5605	508	892	781	2036	653	55	73	1876	53	107	1045	23
October	9881	5988	470	864	658	1901	555	52	51	1743	71	87	1315	24
November	8764	5085	481	810	612	1776	519	45	48	1621	66	89	1374	15
December	8627	4904	504	837	683	1699	590	25	68	1541	49	109	1211	18
					0									
<b>Total Yearly Inbound Calls [answered+abandon+caller disconnected]</b>		<b>Total Yearly Answered Inbound Calls [general+police+hospital]</b>			<b>Total Abandon + Caller Disconnected</b>		<b>Total Abandon</b>			<b>Total Disconnected</b>			<b>Total Online Completed + Improper</b>	
<b>111448</b>		<b>80964</b>			<b>30484</b>		<b>8673</b>			<b>21811</b>			<b>13338</b>	
<b>Total Yearly Inbound Calls + Inbound Onlines</b>		<b>Total Answered Inbound Calls + Completed Online Reports</b>												
<b>124786</b>		<b>94092</b>												

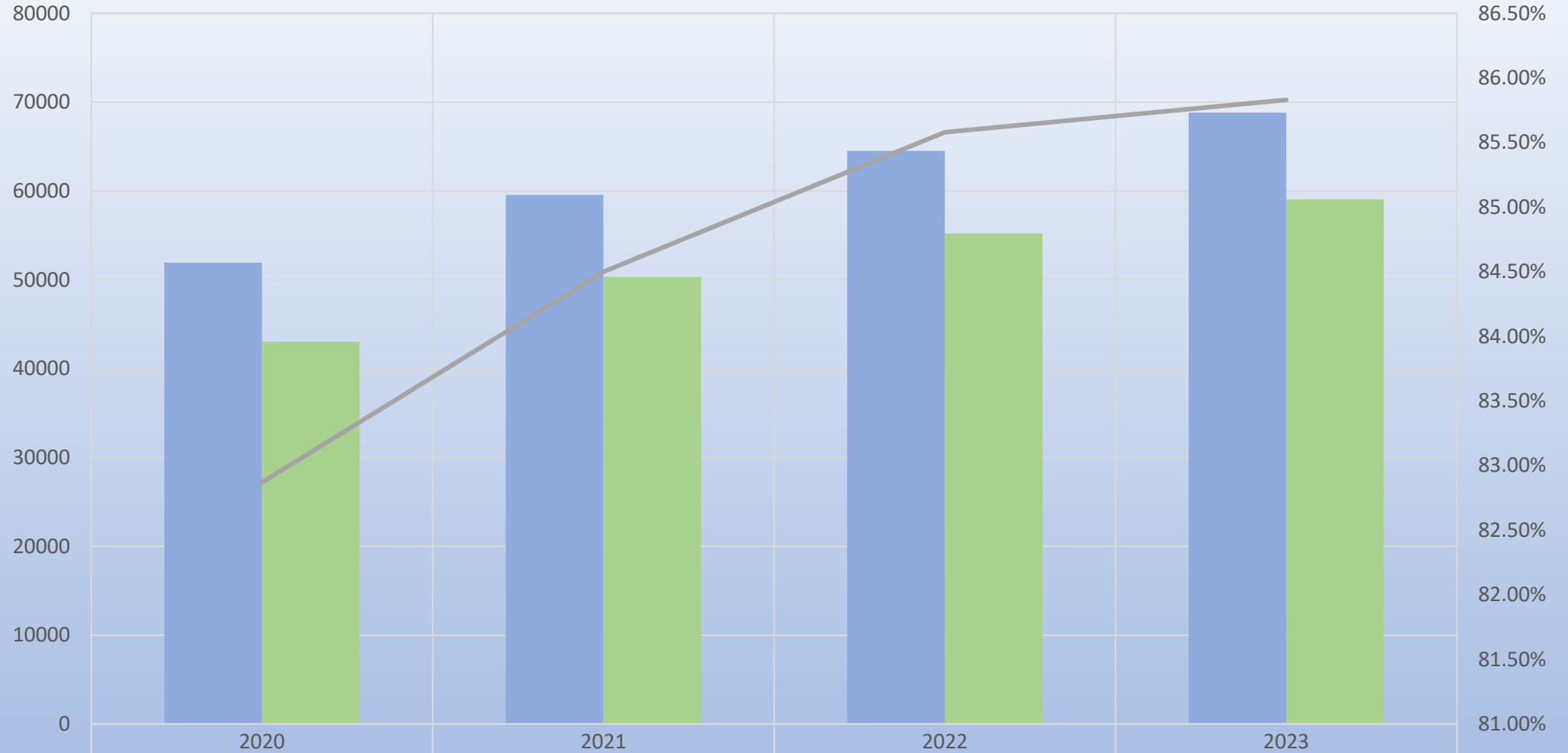


## Total Acceptance Rate by Year





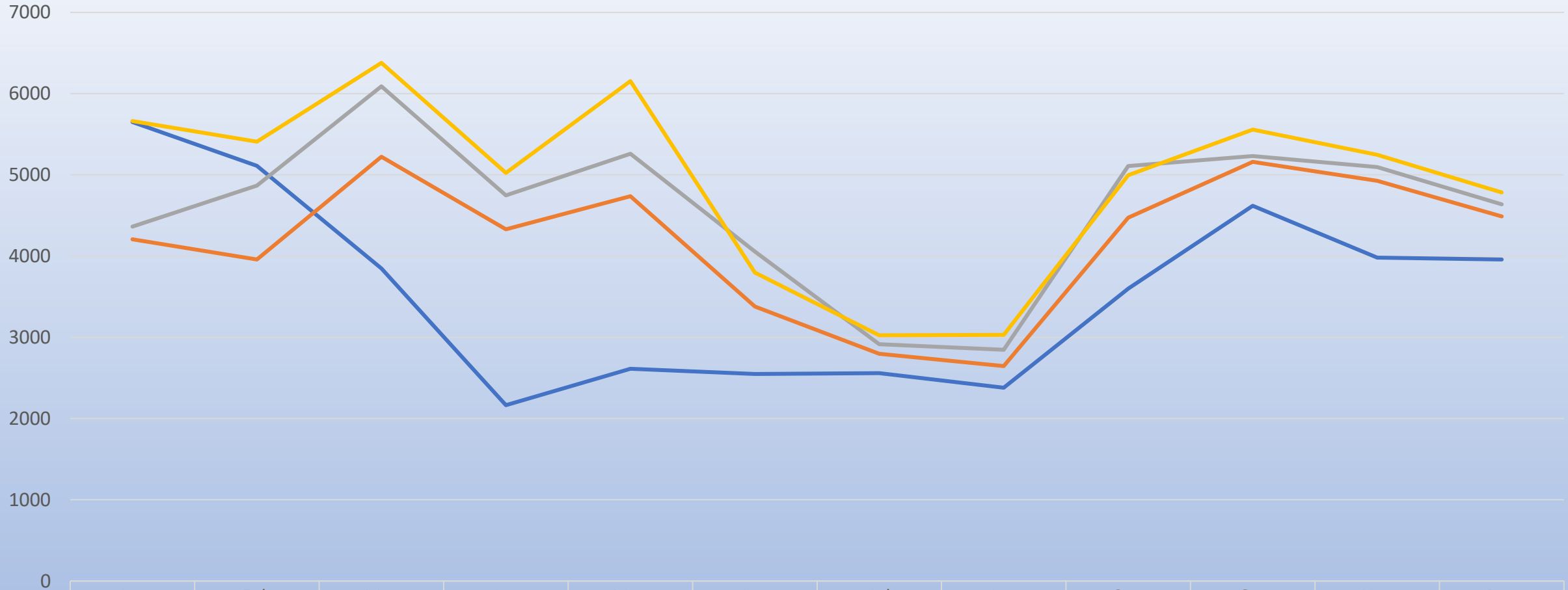
# Percentage of Reports Made by Mandated Reporters



All Reports	51932	59560	64530	68813
Reports Made by MR	43034	50327	55222	59062
Percent of Reports Made by MR	82.87%	84.50%	85.58%	85.83%

■ All Reports   
 ■ Reports Made by MR   
 — Percent of Reports Made by MR

# Reports Made by Mandated Reporters Monthly

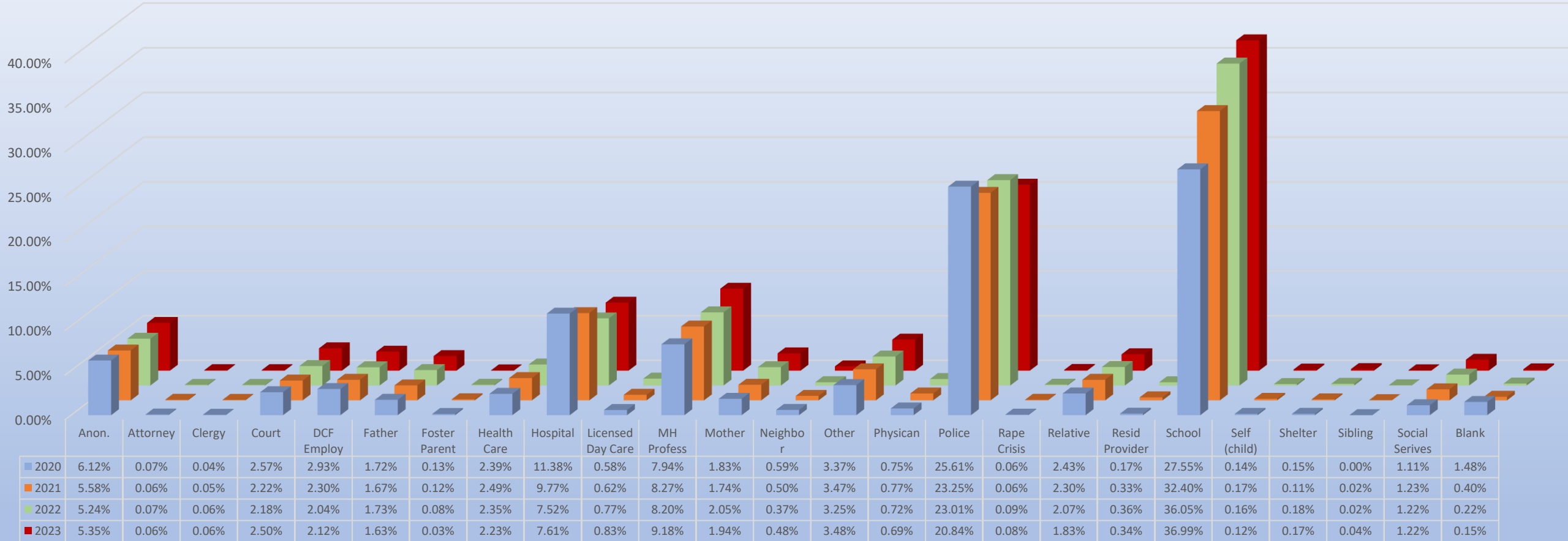


	Jan	Feb	Mar	Apr	May	Jun	Jul	Aug	Sep	Oct	Nov	Dec
2020	5650	5112	3847	2165	2614	2548	2559	2379	3600	4619	3982	3959
2021	4208	3958	5223	4330	4736	3380	2798	2646	4472	5160	4928	4488
2022	4363	4869	6090	4748	5259	4055	2916	2847	5109	5232	5097	4637
2023	5661	5409	6379	5025	6154	3797	3025	3031	4995	5558	5246	4783

— 2020 — 2021 — 2022 — 2023

# Accepted Reports by Report ID Type

## All Reporters



## Highlights from 2023

- ❑ Total reports received in 2023: **68,813** || Total reports accepted in 2023: **31902 [46.36%]**
- ❑ Busiest Month for CPS Reports = **March 2023** || 7,193 reports received [3,235 accepted]
- ❑ Month with the HIGHEST ACCEPTANCE RATE = **August (49.76%)** || 2022: August
- ❑ Month with LOWEST ACCEPTANCE RATE = **February [44.95%]** || 2022: March
- ❑ There was an INCREASE of **2.18%** [ACCEPTANCE RATE] from 2022 to 2023
  - ❑ 2022: 44.18% and 2023: 46.36%
- ❑ Mandated Reporters made **85.83%** of the reports in 2023
  - ❑ 2022: 85.58%
  - ❑ 2021: 84.50%
- ❑ Top Reporters for Accepted reports in 2023 [31,902 accepted reports]
  - School – 36.99% [11,800 accepted reports]
  - Police – 20.84% [6,648 accepted reports]
  - Mental Health Providers – 9.18% [2,930 accepted reports]
  - Hospitals – 7.61% [2,429 accepted reports]
  - Anonymous [no name provided] – 5.35% [1,706 accepted reports]

\*there was a 1.7% increase on FAR reports and 1.7% decrease on Investigation reports\*

Mandated Reporter  
Laws Revisions  
Effective 7/1/24

# “Preliminary Inquiry For Mandated Reporters”

---

The law now allows mandated reporters (such as school employees, health professionals, and coaches) to conduct a preliminary inquiry to determine if reasonable cause exists to make a report. (effective July 1, 2024)

**IMPORTANTLY, THIS INQUIRY IS NOT CONSIDERED AN ABUSE AND NEGLECT INVESTIGATION BY THE SCHOOL BOARD OR DCF**

Additionally, any person who makes or does not make, in good faith, a report to DCF, shall be immune from any liability, civil or criminal. (effective July 1, 2024)

# “Preliminary Inquiries Are Not Considered Investigations”

---

- Preliminary Inquiries allow educators the flexibility to ask students questions about who, what, where, and when, to seek clarity.
- This helps educators determine whether they need to proceed with a report to the Department of Children and Families (DCF).
- When conducting preliminary inquiries, it is crucial to ask questions that are sensitive, non-threatening, and designed to gather information without leading the child.
- It is important to remember that the goal is to gather information without making the child feel pressured or scared.

# “ Preliminary Inquiry Tips For Teachers”

---

- Create a safe environment: Make sure the child feels comfortable and secure.
- Use open-ended questions: This allows the child to provide more detailed answers.
- Be patient and listen: Give the child time to express themselves without rushing.
- Reassure the child: Let them know they are not in trouble and that it is okay to talk.
- Observe non-verbal cues: Pay attention to the child’s body language and behavior.



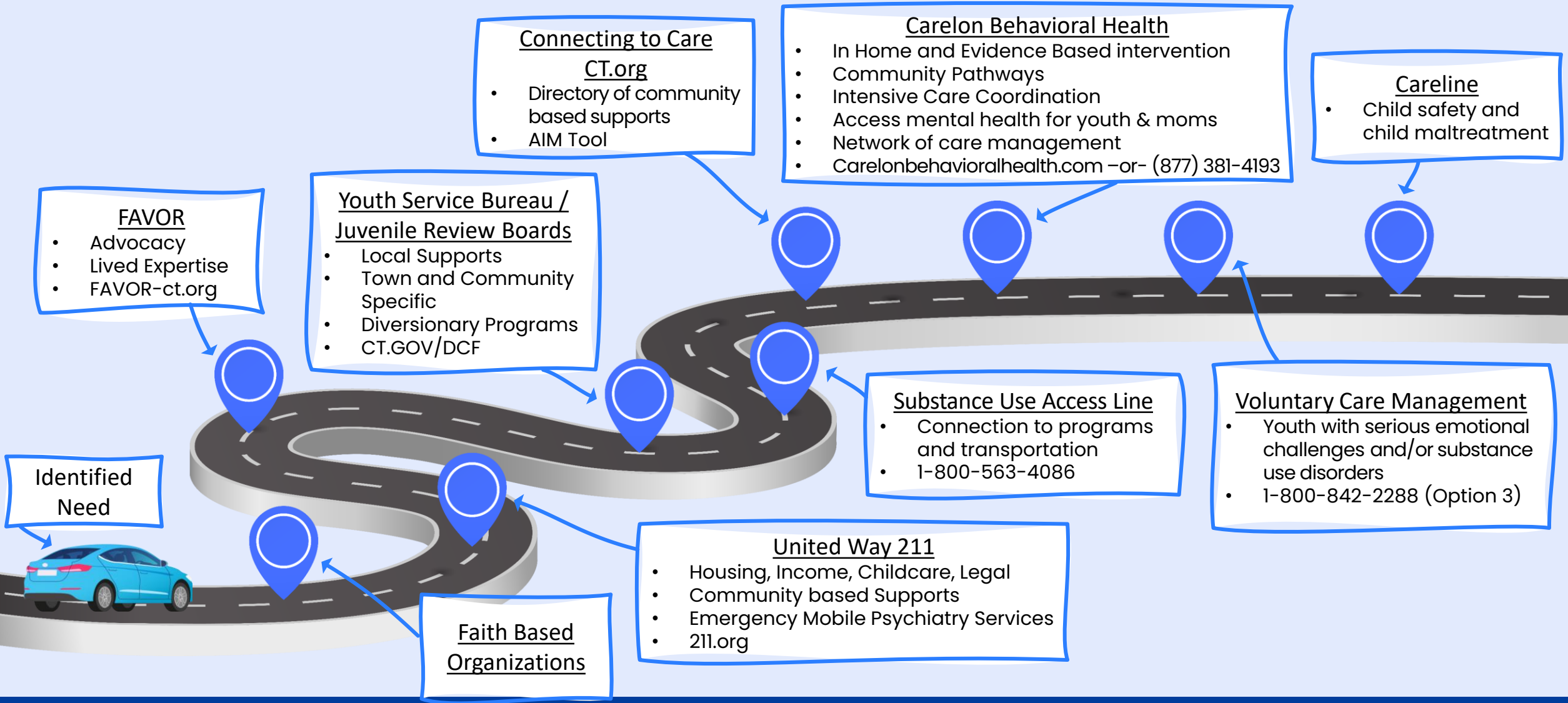
# Engaging Fathers And Non-Custodial Parents

---



- The Department recognizes the vital role fathers play in their children's lives. It is crucial for all fathers or non-custodial parents to be included and engaged by all those working with children within our communities.
- Before submitting an oral or online DCF report, it is essential to gather all demographic information about the father or non-custodial parent to include in your oral or online report.
- **Tips on how to obtain the demographic info pertaining to the father or non-custodial parent:**
  - Asking the other parent/caregiver/custodial parent
  - Asking the child(ren)
  - Reviewing school/medical/other records available within your organization to obtain the information

# Seeking Support is a Sign of Strength





## When to make a referral to the DCF Careline

Mandated reporters are required to report or cause a report to be made when, in the ordinary course of their employment or profession, they have reasonable cause to suspect or believe that a child under the age of 18 has been abused, neglected or is placed in imminent risk of serious harm. (CGS§17a-101a)

### EMERGENT SITUATIONS- Call the CARELINE

**800-842-2288 (General Line)**

**860-352-9261 (back up line)**

If the victim or another similarly situated minor is presenting in:

- Immediate harm
- With the need for emergent medical or mental health care
- With a realistic fear of further abuse or neglect within the next 24 hours
- That they will be inaccessible within the next 24 hours

### NON-EMERGENT SITUATIONS- Online Referral

<https://portal.dcf.ct.gov/>

If the victim or another similarly situated minor is not presenting in need for an emergent response:

- Complete the online report in full, with as much detail and information as possible (failure to provide detailed information may result in a non-accept)
- Upon successful submission you will receive a confirmation email
- Online reporting is available 24 hours a day

All 3 components are required for referral to be accepted:



FOR FAMILIES THAT DO NOT MEET THE ABOVE ACCEPTANCE CRITERIA WHO MAY BENEFIT FROM SERVICES, CONTACT THE INFOLINE @ 211.

\*Age limitations are not considered for children currently receiving services from DCF or if allegations involve sexual abuse of a student by school personnel.

### Educational Neglect

\*Occurs when a school-aged child has excessive absences from school through the intent or neglect of the parent or caregiver.

\*For children older than 12, excessive absenteeism through the child's own intent, despite the caregiver's efforts, is truancy which is handled through the school

# Educational Neglect - Criteria

## Criteria:

- **For children school-aged to age 12** excessive absenteeism may be indicative of the parent's or caregiver's failure to meet the educational needs of the student.
- **For children older than age 12** excessive absenteeism, coupled with a failure by the parent or caregiver to engage in efforts to improve the child's attendance, may be indicative of educational neglect.

**Note:** For children older than age 12, excessive absenteeism through the child's own intent, despite the parent's or caregiver's efforts, is not educational neglect. Rather this is truancy which is handled through the school district.

Considerations in determining the criteria for excessive absenteeism, the following characteristics of the child shall be considered by the Social Worker:

- age;
- health;
- level of functioning;
- academic standing; and
- dependency on parent or caregiver.

In determining the criteria for **excessive absenteeism**, the **following characteristics of the parent or caregiver** shall be considered by the Social Worker:

- rationale provided for the absences;
- efforts to communicate and engage with the educational provider; and
- failure to enroll a school-aged child in appropriate educational programming (including home schooling).



# All Oral And Portal Reports Shall Contain The Following Information, If Known

---

1. The names and addresses of the child and his parents or other person responsible for his care
2. The age of the child
3. The gender of the child
4. The nature and extent of the child's injury or injuries, maltreatment or neglect
5. The approximate date and time the injury or injuries, maltreatment or neglect occurred
6. Information concerning any previous injury or injuries to, or maltreatment or neglect of, the child or his siblings

# All Oral And Portal Reports Shall Contain The Following Information, If Known

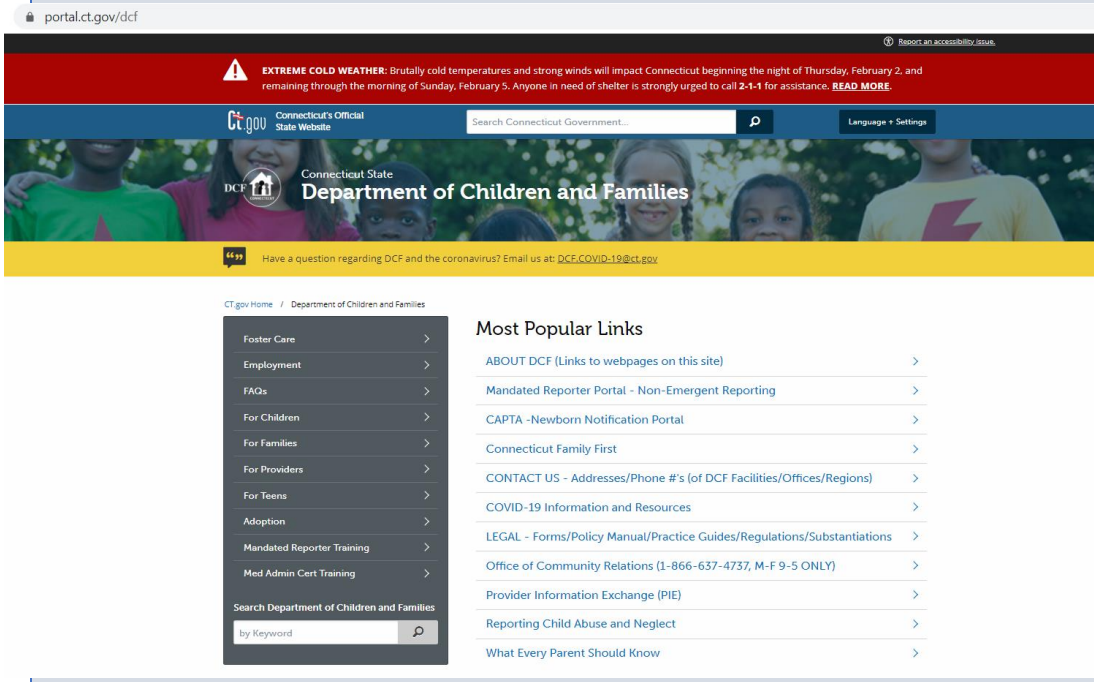
---

7. The circumstances in which the injury or injuries, maltreatment or neglect came to be known to the reporter
8. The name of the person or persons suspected to be responsible for causing such injury or injuries, maltreatment or neglect
9. The reasons such person or persons are suspected of causing such injury or injuries, maltreatment or neglect
10. Any information concerning any prior cases in which such person or persons have been suspected of causing an injury, maltreatment or neglect of a child
11. Whatever action, if any, was taken to treat, provide shelter or otherwise assist the child 17a-101d

# There are two easy ways to locate the DCF Mandated Reporter Portal

## Preferred Method

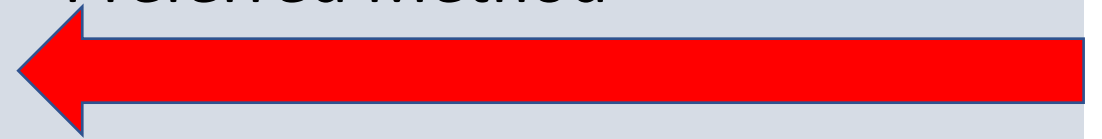
- <https://portal.ct.gov/dcf>



The screenshot shows the homepage of the Connecticut State Department of Children and Families (DCF). At the top, there is a red banner with a warning icon and text about extreme cold weather. Below this is a blue navigation bar with the DCF logo, the text "Connecticut State Department of Children and Families", and a search bar. The main content area features a yellow banner with a question mark icon and text asking for questions regarding DCF and the coronavirus. Below this is a "Most Popular Links" section with a list of links, including "Mandated Reporter Portal - Non-Emergent Reporting". A search bar is located at the bottom left of the page.

## Another Option

- Use a Search Engine such as Google or Bing.
- Search “DCF Connecticut”
- Click into the DCF website
  - <https://portal.ct.gov/dcf>
- This link will bring you to the Preferred Method



# <https://portal.ct.gov/dcf>



## Department of Children and Families



Have a question regarding DCF and the coronavirus? Email us at: [DCF.COVID-19@ct.gov](mailto:DCF.COVID-19@ct.gov)

Click into the  
Mandated  
Reporter Portal

[CT.gov Home](#) / [Department of Children and Families](#)

[Foster Care](#) >

[Employment](#) >

[FAQs](#) >

[For Children](#) >

[For Families](#) >

[For Providers](#) >

[For Teens](#) >

[Adoption](#) >

[Mandated Reporter Training](#) >

[Med Admin Cert Training](#) >

### Most Popular Links

[ABOUT DCF \(Links to webpages on this site\)](#) >

[Mandated Reporter Portal - Non-Emergent Reporting](#) >

[CAPTA -Newborn Notification Portal](#) >

[Connecticut Family First](#) >

[CONTACT US - Addresses/Phone #'s \(of DCF Facilities/Offices/Regions\)](#) >

[COVID-19 Information and Resources](#) >

[LEGAL - Forms/Policy Manual/Practice Guides/Regulations/Substantiations](#) >

[Office of Community Relations \(1-866-637-4737, M-F 9-5 ONLY\)](#) >





# DCF Portal Application Page



Department of Children and Families



## CPS Background Check

CPS Background Check requests can be submitted in this site. You can submit Employment, Foster Care, and Adam Walsh checks.

[More Info](#)

[Training](#)



## Mandated Reporter Online Reporting Portal

Mandated Reporters can file Non-Emergent Online CPS Reports to DCF.

[More Info](#)

[Training](#)



## CAPTA/CARA Newborn Notification Portal

Birthing

Click into the Mandated Reporter Online Portal

# Mandated Reporter Online Reporting Portal for Non-Emergent CPS Reports

portal.dcf.ct.gov/Portal/CPSOR#home



Mandated Reporter

Training

FAQs

Contact Us

About Us

Links

DCF Portal Apps



## Welcome to the Mandated Reporter Online Reporting Portal for Non-Emergent CPS Reports.

This portal was created for purposes of providing Mandated Reporters with the ability to submit Non-Emergent Child Protective Services reports of abuse or neglect to the Department of Children and Families (DCF). If you require an immediate response from DCF or law enforcement, or your concern of child maltreatment is of an urgent matter, please contact the **DCF CARELINE at 1-800-842-2288**, immediately. During the online process, you will be asked specific questions that will help guide your submission. Making an Online CPS report to DCF is made in substitution of submitting a DCF-136 form and is not required following your submission.

Sign in with **ID.me**

What is ID.me?

All CAPTA/CARA Notifications and/or all Birthing Hospital CPS Reports regarding a newborn child must continue the submission process at the: [CAPTA-Newborn Portal](#).

Connect with us!



# Mandated Reporter Portal Enhancements

1. Ability for multiple attachments to now be included with online CPS reports
2. Improved questions and additional information pop-ups to help elicit improved responses and details
3. Upgraded hard stops to force urgent reports to be called directly to the DCF Careline
4. One-time opportunity to download a copy of the submitted CPS report
5. Dashboard view to see previous submissions with reference numbers
6. Ability to save in-progress reports and resume at a later time (up to 12 hours)

# Empowering Mandated Reporters - Brochure

**CHILD SAFETY PRACTICE MODEL**

The ABCD Paradigm creates framework to help assess child safety and unites DCF's work internally, across specializations, and systems when working with children, parents, families, and community providers.

Adult Protective Capacities: Ability to understand their protective role and take action ensuring safety.

- Attachment, attunement, and expectations.
- Network of family and social supports.
- Self-regulation and problem-solving.

Behaviors of Concern: Harmful behaviors impacting child safety and well-being.

- Extent to which parent's acknowledge the problem, engage in interventions, and demonstrate progress.

Child Vulnerability: Ability to recognize and understand to take protective action.

- The chronological/developmental age.
- Visibility in the community.
- Level of supervision or care required.
- Parental discipline techniques.
- History of trauma or adversity.

Dangerous Conditions: Environmental conditions which present immediate harm.

- Is the home child-proofed/free of hazards.
- Weapons, medications, or substances.
- Exposure to dangerous people/situations.

**STILL HAVE QUESTIONS? WE CHALLENGE YOU TO LEARN MORE!**

ENGAGING FATHER'S IN THE LIVES OF THEIR CHILDREN

The Connecticut Fatherhood Initiative (CFI) is a broad-based, statewide collaborative effort led by the Department of Social Services, focused on changing the systems that can improve fathers' ability to be fully and positively involved in the lives of their children.

**DID YOU KNOW?!**

You can register for **FREE** in-person and/or virtual trainings via the **Academy for Community Partners!** Topics include but are not limited to: **Advancing Anti Racism; Implicit Bias; Poverty Is Not Neglect; ABCD Child Safety Practice Model;** and more offerings update seasonally.

WEBLINKS TO TRAINING CATALOG & RESOURCES:

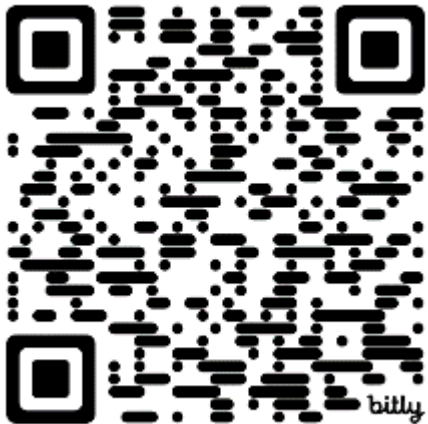
<https://portal.ct.gov/dcf/for-providers/home>  
<https://portal.ct.gov/dcf/mandated-reporter-training/home>  
<https://portal.ct.gov/dcf1-dcf/child-abuse-and-neglect-definitions>  
<https://connectingtocarect.org>  
<https://portal.ct.gov/fatherhood>

**EMPOWERING MANDATED REPORTERS**

**THANK YOU FOR CONTRIBUTING TO CHILD PROTECTION BY HELPING TO BUILD A STRONGER SAFETY NET FOR CHILDREN ACROSS CONNECTICUT COMMUNITIES**

STATE OF CONNECTICUT  
Department of Children and Families  
Academy for Community Partners  
505 Hudson Street, Hartford, CT 06105  
Tel. (860) 550-6300

Scan To Download



# Thank You

**Lisa R. Daymonde, LMSW**

Careline Director

Office: 860-560-7001

Cell: 203 675-3413

Hours: Monday-Friday 7:30am-4:00pm

**Chanae' Perry, MSW**

Careline Program Supervisor

Cell: 860-462--5830

Hours: Monday- Friday 2:00pm=10:30pm

**Vanessa Hudson**

Careline Program Supervisor

Cell: 860-305-2820

Hours: Sunday-Thursday 7:30am-4:00pm

**Edward Valentin, MSW**

Careline Program Supervisor

Cell: 860-455-5434

Hours: Tuesday-Friday 10:00am-6:30pm &  
Saturday 8:00am-4:30pm



# Talk Tuesday Survey

<https://serc.info/ttsurvey24>

A screenshot of the SERC Talk Tuesday Survey 2024-25 interface. At the top, the SERC logo is displayed with the text 'STATE EDUCATION RESOURCE CENTER' and the tagline 'EQUITY | EXCELLENCE | EDUCATION'. Below this, the survey title 'Talk Tuesday Survey 2024-25' is shown. The main content area contains a question: '1. What best describes your role? \*'. There are eight radio button options: Administration, General Education Teacher, Support Services, Family Resource Center, School Attendance Team Member, Community Partnerships/Community Organizations, Special Education, and Other - Write In. The 'Other - Write In' option has a text input field next to it.

**SERC**  
STATE EDUCATION RESOURCE CENTER  
EQUITY | EXCELLENCE | EDUCATION

## Talk Tuesday Survey 2024-25

1. What best describes your role? \*

- Administration
- General Education Teacher
- Support Services
- Family Resource Center
- School Attendance Team Member
- Community Partnerships/Community Organizations
- Special Education
- Other - Write In



# Upcoming Attendance & Engagement Meetings

## Talk Tuesdays for the 2024-25 School Year

### 2024-2025

- October 29
- November 12
- December 10
- January 7
- January 23
- February 4
- March 4
- March 18
- April 1
- April 29
- May 13
- May 27

**Register for Talk Tuesdays**





# Keep in Touch!

**Kari Sullivan Custer, CSDE**

[Kari.Sullivan@ct.gov](mailto:Kari.Sullivan@ct.gov)

860-807-2041

**Jay Brown, CSDE**

[Jay.Brown@ct.gov](mailto:Jay.Brown@ct.gov)

860-713-6918

**Christine Kuehlewind, SERC**

[Kuehlewind@ctserc.org](mailto:Kuehlewind@ctserc.org)

860-632-1485, ext. 371

**Ann Marie Cordisco, SERC**

[cordisco@ctserc.org](mailto:cordisco@ctserc.org)

860-632-1485, ext. 399

**Holli Ryan, SERC**

[ryan@ctserc.org](mailto:ryan@ctserc.org)

**(Registration Information)**

860-632-1485, ext. 243