

CONNECTICUT STATE BOARD OF EDUCATION

Hartford

TO: State Board of Education
FROM: Dr. Dianna R. Wentzell, Commissioner of Education
DATE: November 7, 2018
SUBJECT: College Enrollment, Credit Attainment and Remediation of High School Graduates in Connecticut Public Universities and Community Colleges

Executive Summary

Please find attached the report entitled *Trends in Enrollment, Credit Attainment, and Remediation at Connecticut Public Universities and Community Colleges: Results from P20WIN for the Graduating Classes of 2010, 2011, and 2012*. The report answers three questions:

1. Enrollment: What percentage of the graduating class enrolled in a Connecticut public university or community college (UCONN, the four Connecticut State Universities, and 12 Connecticut community colleges) within 16 months of graduation?
2. Credit Attainment: What percentage of those who enrolled in a Connecticut public university or community college within 16 months of graduation earned at least one year's worth of credits (24 or more) within two years of enrollment?
3. Remediation: What percentage of those who enrolled in one of the four Connecticut State Universities or one of the 12 community colleges within 16 months of graduation took a remedial course within two years of enrollment?

The overall results indicate the following:

- Of the nearly 39,000 students in each of the graduating classes of 2010, 2011, and 2012, around 40 percent of them enrolled in a Connecticut public university or community college within 16 months of graduation. There is a slight increase across the graduating classes, from 39.3 percent in 2010 to 40.8 percent in 2011 and finally 41.2 percent in 2012.
- Of those who enroll, nearly two-thirds earn 24 credits within two years of enrollment. There is a slight increase across the graduating classes, from 64.4 percent in 2010 to 65.4 percent in 2011 and finally 66.8 percent in 2012.
- Of the approximately 13,000 students per graduating class who enrolled in one of the four Connecticut public universities or a Connecticut community college within 16 months of graduation, nearly half of them took a remedial course within the first two years of enrollment.

When disaggregating the data by student groups, some of the following were observed:

- Across all three graduating classes, female students were both more likely to enroll in a Connecticut public university or a Connecticut community college within 16 months of graduation than their male student peers and more likely to earn 24 or more credits within two years of enrollment.
- Students reported as African American or Hispanic were less likely to have earned 24 or more credits in two years than their white student peers, with Asian students having the highest credit attainment rates.
- Across all three graduating classes, English Learners were less likely than their peers to have earned a full year's worth of credit within two years of enrollment. Students with disabilities were also less likely than their peers to have earned a full year's worth of credit within two years of enrollment.

The report is being shared with CSDE staff, district and school leaders, and higher education staff to inform strategies that prepare all students for education after high school. Results for subsequent graduating classes will be added to this report so as to serve as one additional data point that informs our efforts around the implementation of Connecticut's Core Standards.

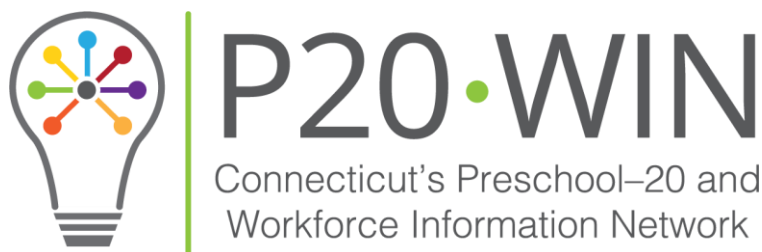
Prepared by: _____
Danielle Bousquet, Associate Education Consultant

Prepared by: _____
Dr. Charles Martie, Education Consultant

Approved by: _____
Ajit Gopalakrishnan, Chief Performance Officer

Trends in Enrollment, Credit Attainment, and Remediation at Connecticut Public Universities and Community Colleges:

Results from P20WIN for
the Graduating Classes of
2010, 2011, and 2012



www.ct.edu/p20win

Updated: 10/11/2018

Table of Contents

<u>Executive Summary</u>	2
<u>Statewide Trends in Enrollment and Credit Attainment</u>	3
<u>Statewide Trends in Remediation</u>	4
<u>Appendix A: Graphs</u>	5
<u>Appendix B: Results Tables</u>	9
<u>1. Statewide Demographics by Graduating Class</u>	10
<u>2. Statewide Credit Attainment Results by Demographic Subgroup</u>	11
<u>3. Statewide Remediation Results by Demographic Subgroup</u>	12
<u>4. Credit Attainment Results by District</u>	13
<u>5. Remediation Results by District</u>	17
<u>6. Credit Attainment Results by School</u>	21
<u>7. Remediation Results by School</u>	26
<u>Appendix C: Methods</u>	31

Trends in Enrollment, Credit Attainment, and Remediation at Connecticut Public Universities and Community Colleges: Results from P20WIN for the High School Graduating Classes of 2010, 2011, and 2012

During the summer of 2014, three Connecticut state agencies – the Connecticut State Department of Education, the Board of Regents for Higher Education, and the Department of Labor – successfully completed a pilot project and established the Preschool through 20 and Workforce Information Network (P20WIN). In 2015, the University of Connecticut (UCONN) joined the effort, adding significantly to the scope of the data and analysis. P20WIN is an unprecedented interagency network that securely links data to gain new insights that can help improve the policies and procedures that affect individuals and students these agencies serve.

These analyses examine:

- *Enrollment*: What percentage of the graduating class (or subgroup of the graduating class) enrolled in a Connecticut public university or community college (UCONN, the four Connecticut State Universities, and all Connecticut community colleges) within 16 months of graduation?
- *Credit Attainment*: What percentage of those who enrolled in a Connecticut public university or community college within 16 months of graduation (or subgroup thereof) earned at least one year's worth of credits (24 or more) within two years of enrollment?
- *Remediation*: What percentage of those who enrolled in either a Connecticut State University or community college within 16 months of graduation (or subgroup thereof) took a remedial course within two years of enrollment?
 - UCONN does not collect data on remediation, and is thus not included in the remediation analysis. The enrollment percentage of the graduating class without UCONN is provided for comparison.

The results contained herein are both a fresh examination of previous P20WIN evaluations of the high school graduating class of 2010 and 2011 as well as a new evaluation of the graduating class of 2012 and the trends in enrollment, credit attainment, and remediation in Connecticut's public universities and community colleges. For more information about the differences between this report and previous reports, please see Appendix C.

The complete results are provided in six graphs (see Appendix A) and seven tables (see Appendix B):

- Graphs 1 and 2: Enrollment at CT Public Universities and Community Colleges
- Graphs 3 and 4: Credit Attainment at CT Public Universities and Community Colleges
- Graphs 5 and 6: Remediation at CT State Universities and Community Colleges
- Table 1: Statewide Demographics by Graduating Class (provided for comparison)
- Table 2: Statewide Credit Attainment Results by Demographic Subgroup
- Table 3: Statewide Remediation Results by Demographic Subgroup
- Table 4: Credit Attainment Results by District
- Table 5: Remediation Results by District
- Table 6: Credit Attainment Results by School
- Table 7: Remediation Results by School

Statewide Trends in Enrollment and Credit Attainment

(See Graphs 1-4 and Table 2 for more information)

Of the nearly 39,000 students in each of the graduating classes (GC) of 2010, 2011, and 2012, around 40% of them enrolled in a Connecticut public university or community college (CPUCC) within 16 months of graduation. There is a slight increase across the graduating classes, from 39.3% in 2010 to 40.8% in 2011 and finally 41.2% in 2012. Across all three graduating classes, female students were not only more likely to enroll in a CPUCC within 16 months of graduation than their male student peers (e.g., GC11, Female: 42.2%, Male: 39.4%), female students were also more likely to earn 24 or more credits within two years of enrollment (e.g., GC11, Female: 68.5%, Male: 62.1%). Both male and female students experienced increases in enrollment (GC10-GC12, Female: 39.6%-42.1%, Male: 39.0%-40.2%) and credit attainment (GC10-GC12, Female: 66.7-69.6%, Male: 62.0%-63.8%) across the three graduating classes.

While African American, Asian, and Hispanic students were more likely to enroll in CPUCCs than their white student peers (e.g., GC11, African American: 43.0%, Asian: 50.7%, Hispanic: 43.9%, White: 39.2%), students reported as African American or Hispanic were less likely to have earned 24 or more credits in two years than their white students peers, with Asian students having the highest credit attainment rates (e.g., GC11, African American: 51.1%, Asian: 79.7%, Hispanic: 53.9%, White: 70.0%). All subgroups experienced increases across the graduating classes in both CPUCC enrollment (GC10-GC12, African American: 38.4%-43.3%, Asian: 49.9%-50.5%, Hispanic: 41.6%-44.4%, White: 38.5%-39.6%) and credit attainment (GC10-GC12, African American: 49.8%-52.3%, Asian: 79.8%-80.2%, Hispanic: 52.8%-55.8%, White: 68.3%-71.4%).

English Learners were slightly less likely to have enrolled in a CPUCC within 16 months of graduation than their peers across all three cohorts (e.g., GC11, EL: 38.2%, Not EL: 40.8%). Across all three cohorts, English Learners were less likely than their peers to have earned a full year's worth of credit within two years of enrollment (e.g., GC11, EL: 48.0%, Not EL: 65.8%). While the percentage of English Learners enrolling in a CPUCC increased slightly across the cohorts (GC10-GC12: 36.3%-38.2%), the percentage of students earning a year's credit decreased (GC10-GC12: 52.0%-50.7%).

Students with disabilities (SWD) were less likely to have enrolled in a CPUCC within 16 months of graduation than their peers across all three cohorts (e.g., GC11, SWD: 30.2%, Not SWD: 41.7%). Across all three cohorts, students with disabilities were less likely than their peers to have earned a full year's worth of credit within two years of enrollment (e.g., GC11, SWD: 38.9%, Not SWD: 67.1%). While the percentage of students with disabilities enrolling in a CPUCC held nearly constant across the cohorts (GC10-GC12: 30.3%-29.5%), the percentage of students earning a year's credit increased slightly (GC10-GC12: 37.0%-39.0%).

Students who were eligible for free or reduced price lunch (FRL) were either equally or more likely to have enrolled in a CPUCC within 16 months of graduation than their peers across all three cohorts (e.g., GC11, FRL: 42.5%, Not FRL: 40.2%). Across all three cohorts, students eligible for FRL were less likely than their peers to have earned a full year's worth of credit within two years of enrollment (e.g., GC11, FRL: 52.9%, Not FRL: 70.1%). The percentage of students eligible for FRL enrolling in a CPUCC increased across the cohorts (GC10-GC12: 39.0%-42.6%), as did the percentage of students earning a year's credit (GC10-GC12: 52.1%-54.6%).

Statewide Trends in Remediation

(See Graphs 5-6 and Table 3 for more information)

Of the approximately 13,000 students per graduating class who enrolled in one of the four Connecticut State Universities or a Connecticut community college within 16 months of graduation, nearly half of them took a remedial course within the first two years of enrollment, with declines in every demographic subgroup across the three graduating classes (State Average, GC10: 49.8%, GC11: 46.9%, GC12: 46.0%). Female students took slightly more remedial courses than their male student peers (e.g., GC11, Female: 48.7%, Male: 44.9%), although the gap narrowed by more than half across the graduating classes (GC10-GC12, Female: 51.1%-46.7%, Male: 48.5%-45.3%).

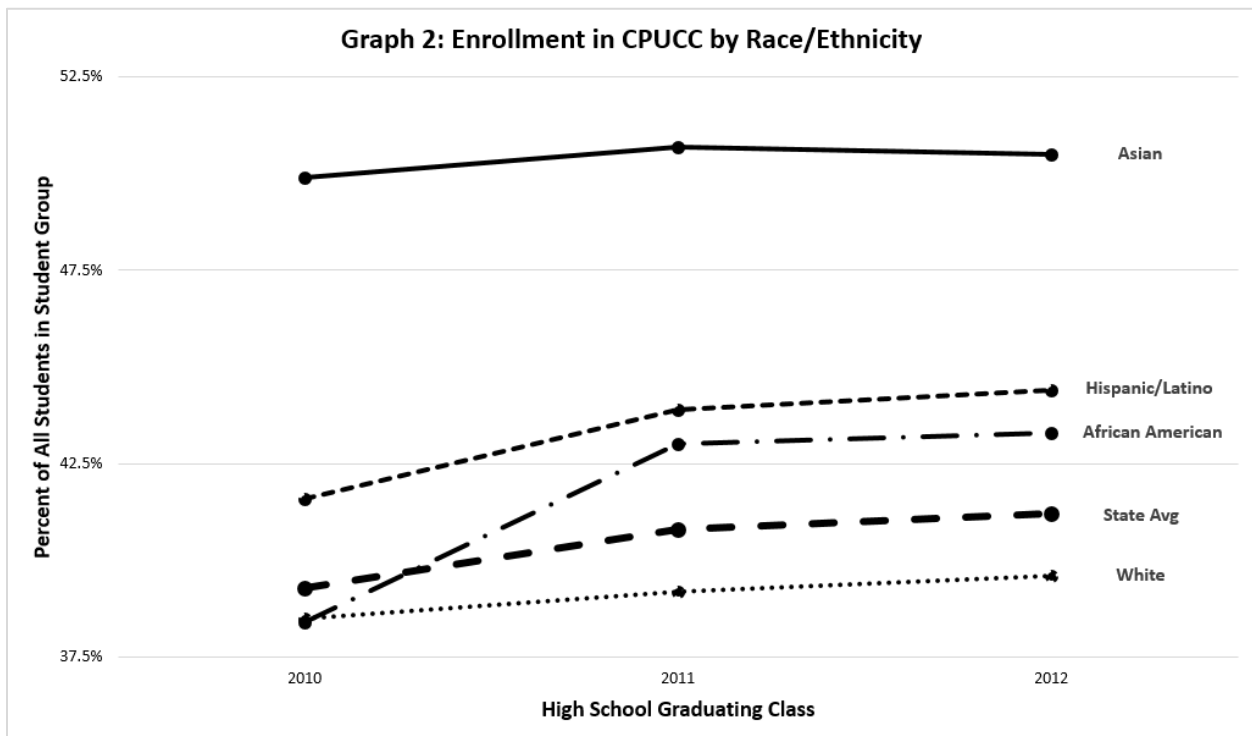
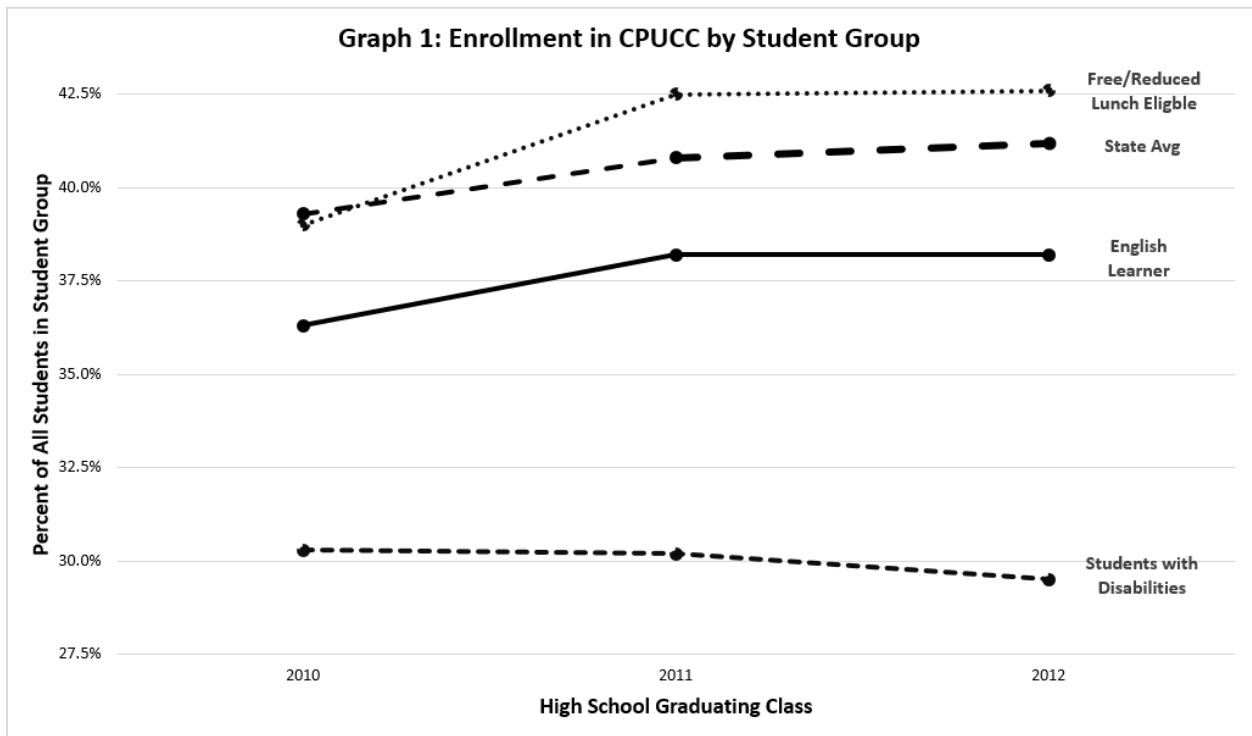
Both English Learners and students with disabilities had significantly higher percentages of students taking remedial classes (e.g., GC11, EL: 73.2%, SWD: 78.4%) than their peers (e.g., GC11, Not ELL: 46.2%, Not SWD: 44.4%). Students eligible for free or reduced price lunch also had significantly higher percentages of remedial courses than their peers (e.g., GC11, FRL: 64.6%, Not FRL: 39.3%). All three subgroups—English Learners, students with disabilities, and students eligible for FRL—had fewer students taking remedial courses across the graduating classes (GC10-12, EL: 75.8%-73.4%, SWD: 77.7%-71.9%, FRL: 68.2%-64.1%).

Students who were reported as African American or Hispanic enrolled in a CSCU were also more likely to take a remedial course than their white or Asian student peers (e.g., GC11, African American: 66.7%, Asian: 44.3%, Hispanic: 65.2%, White: 38.0%). All four subgroups experienced an overall decline in the percentage of students taking remedial courses (GC10-12: African American: 70.1%-66.4%, Asian: 42.7%-36.6%, Hispanic: 67.5%-64.3%, White: 42.0%-37.1%) While Asian students in the 2011 graduating classes took more remedial courses than their white student peers, the proportion of students in the 2010 and 2012 graduating classes who took remedial courses is comparable.

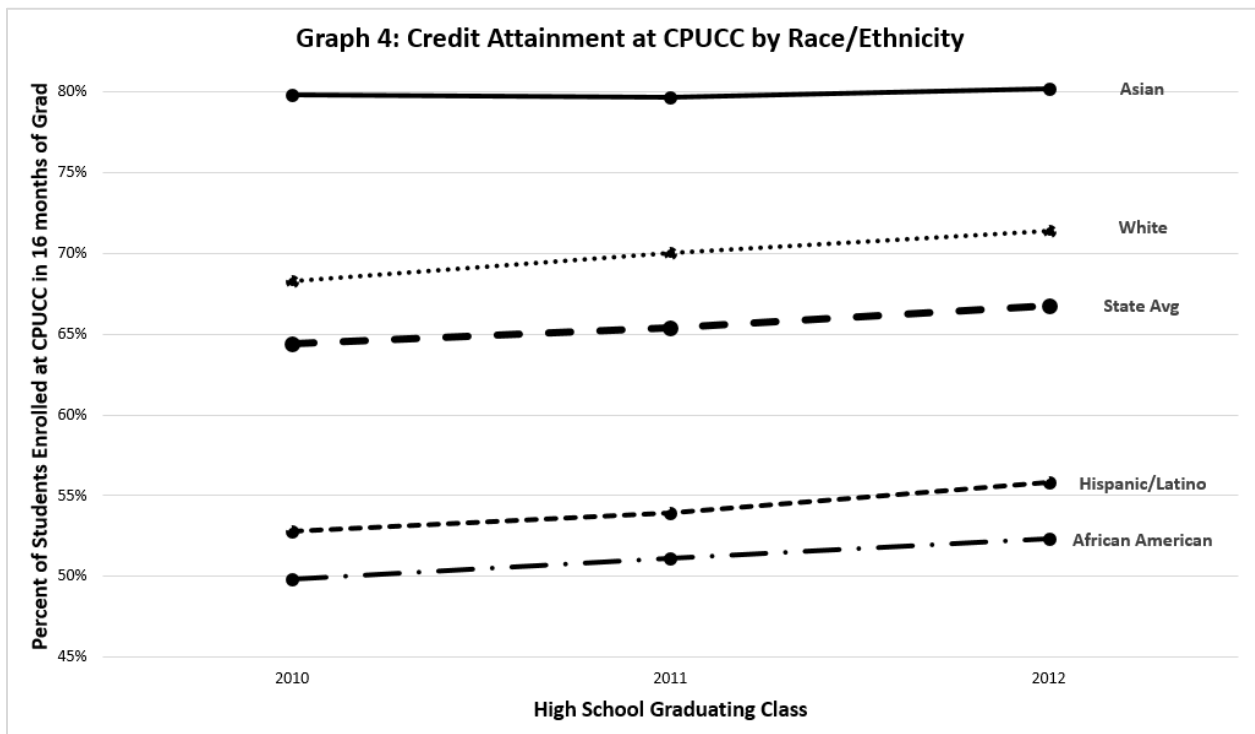
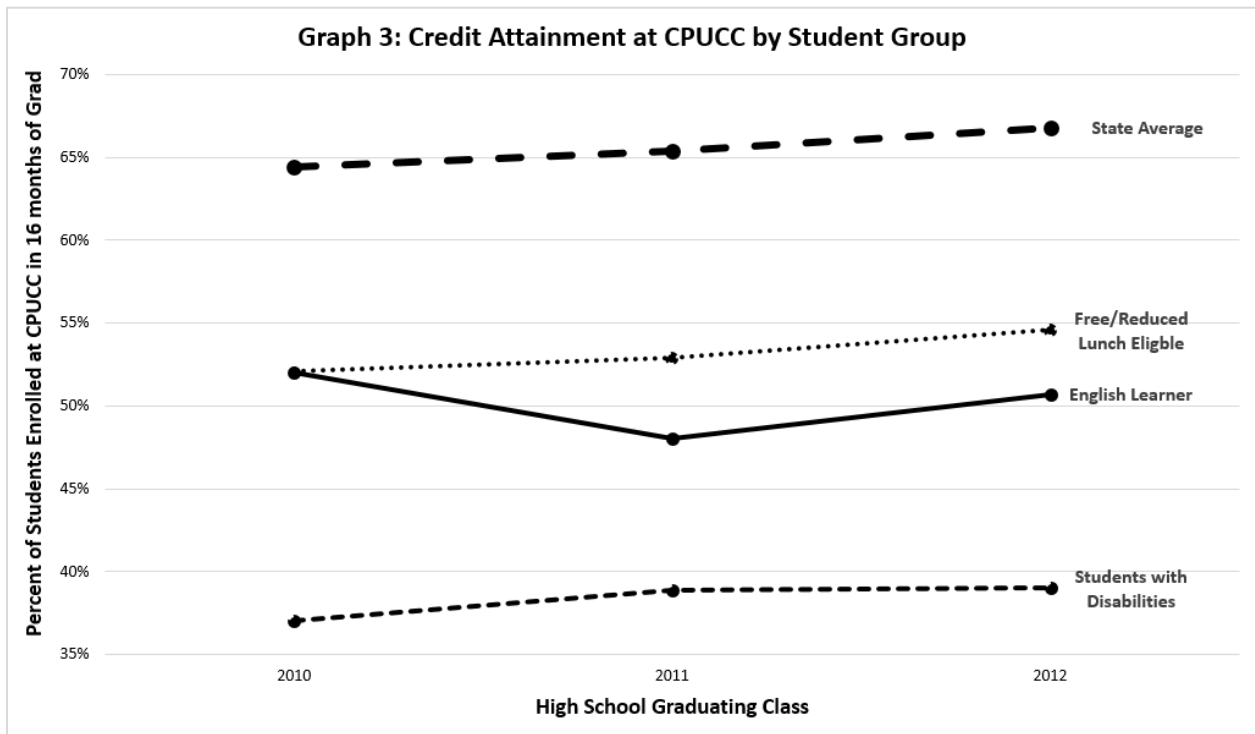
District and school data is available in Appendix B: Tables 3-6.

Appendix A: Graphs

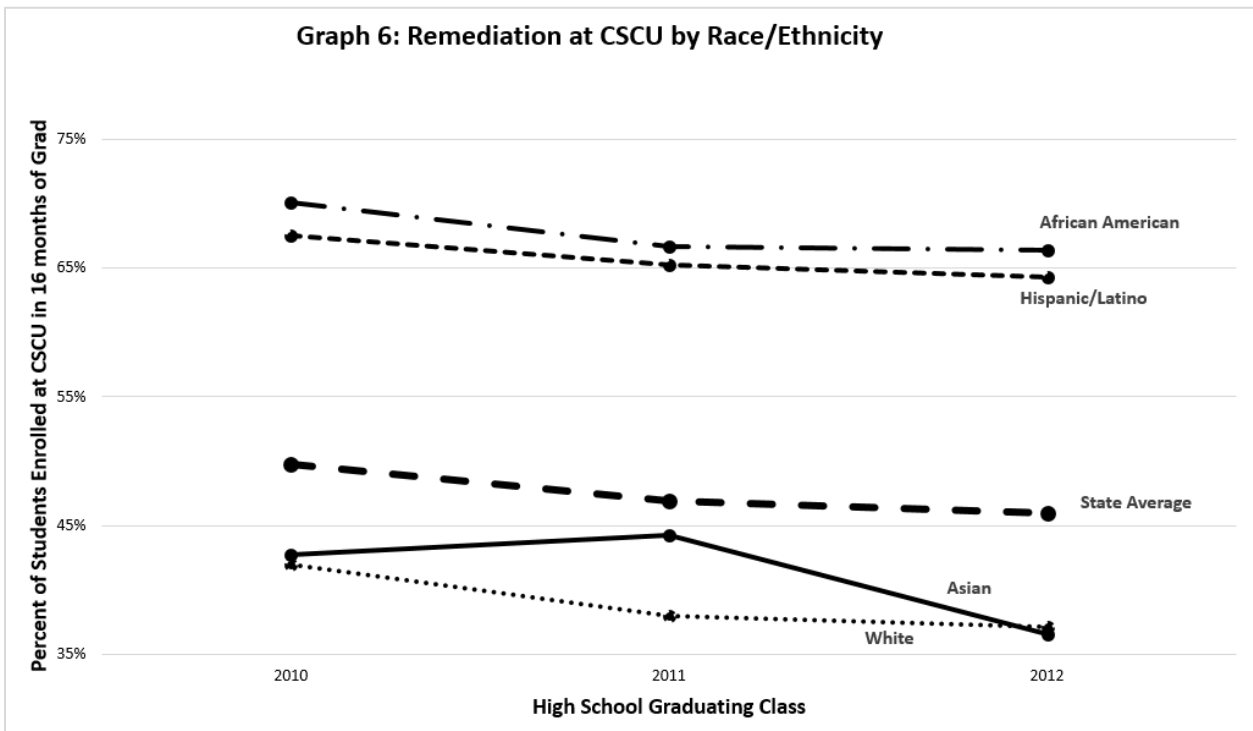
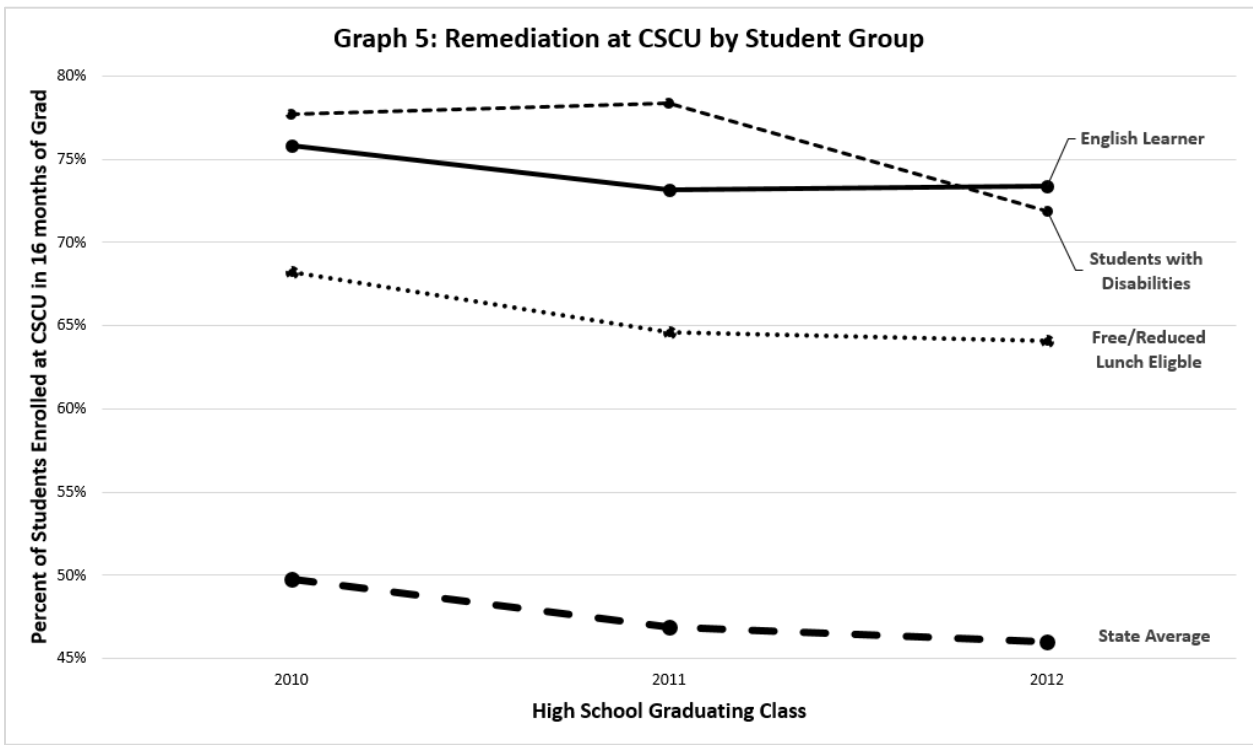
Graphs 1-2: Enrollment in a Connecticut Public University or Community College



Graphs 3-4: Credit Attainment in a Connecticut Public University or Community College



Graphs 5-6: Remediation in a Connecticut State University or Community College



Appendix B: Results Tables

Table 1: Statewide Demographics by Graduating Class

Student Group	Graduating Class of 2010		Graduating Class of 2011		Graduating Class of 2012	
	Number of Students	Percent of Cohort	Number of Students	Percent of Cohort	Number of Students	Percent of Cohort
Gender						
Female	19,419	50.2%	19,456	50.0%	19,508	50.4%
Male	19,302	49.8%	19,433	50.0%	19,170	49.6%
Race/Ethnicity**						
American Indian/Alaska	122	0.3%	168	0.4%	212	0.5%
Asian	1,474	3.8%	1,397	3.6%	1,492	3.9%
Black/African American	4,960	12.8%	4,895	12.6%	4,703	12.2%
Hispanic/Latino any race	4,932	12.7%	5,306	13.6%	5,513	14.3%
Native Hawaiian/Pacific	*	*	*	*	24	0.1%
Two or More Races	*	*	*	*	394	1.0%
White	27,157	70.1%	26,835	69.0%	26,340	68.1%
English Learners						
Yes	951	2.5%	936	2.4%	960	2.5%
No	37,770	97.5%	37,953	97.6%	37,718	97.5%
Students with Disabilities						
Yes	3326	8.6%	3305	8.5%	3500	9.0%
No	35,395	91.4%	35,584	91.5%	35,178	91.0%
Free/Reduced Price Meal Eligible						
Yes	10,133	26.2%	10,934	28.1%	11,238	29.1%
No	28,588	73.8%	27,955	71.9%	27,440	70.9%
Cohort Total	38,721		38,889		38,678	

Source: P20WIN data and SDE Calculations

* Data suppressed to protect confidentiality

Table 2: Credit Attainment by Subgroup at All Connecticut Public Universities and Community Colleges

Student Group	Graduating Class of 2010		Graduating Class of 2011		Graduating Class of 2012	
	Percent Enrolled in 16 Months	†Percent Earning 24 Credits	Percent Enrolled in 16 Months	†Percent Earning 24 Credits	Percent Enrolled in 16 Months	†Percent Earning 24 Credits
Gender						
Female	39.6%	66.7%	42.2%	68.5%	42.1%	69.6%
Male	39.0%	62.0%	39.4%	62.1%	40.2%	63.8%
Race/Ethnicity						
American Indian/Alaska	47.5%	58.6%	41.1%	63.8%	44.3%	61.7%
Asian	49.9%	79.8%	50.7%	79.7%	50.5%	80.2%
Black/African American	38.4%	49.8%	43.0%	51.1%	43.3%	52.3%
Hispanic/Latino any race	41.6%	52.8%	43.9%	53.9%	44.4%	55.8%
Native Hawaiian/Pacific	*	*	*	*	*	*
Two or More Races	*	*	*	*	*	*
White	38.5%	68.3%	39.2%	70.0%	39.6%	71.4%
English Learners						
Yes	36.3%	52.0%	38.2%	48.0%	38.2%	50.7%
No	39.4%	64.7%	40.8%	65.8%	41.2%	67.1%
Students with Disabilities						
Yes	30.3%	37.0%	30.2%	38.9%	29.5%	39.0%
No	40.2%	66.3%	41.7%	67.1%	42.3%	68.6%
Free/Reduced Price Meal Eligible						
Yes	39.0%	52.1%	42.5%	52.9%	42.6%	54.6%
No	39.5%	68.4%	40.2%	70.1%	40.6%	71.5%
State Total	39.3%	64.4%	40.8%	65.4%	41.2%	66.8%

Source: P20WIN data and SDE Calculations

* Data suppressed to protect confidentiality

† This column is a subset of the column immediately preceding it.

Table 3: Remediation by Subgroup at Connecticut State University System and Community Colleges

Student Group	Graduating Class of 2010		Graduating Class of 2011		Graduating Class of 2012	
	Percent Enrolled in 16 Months	†Percent Enrolled in Remediation	Percent Enrolled in 16 Months	†Percent Enrolled in Remediation	Percent Enrolled in 16 Months	†Percent Enrolled in Remediation
Gender						
Female	33.7%	51.1%	35.9%	48.7%	35.7%	46.7%
Male	32.1%	48.5%	32.8%	44.9%	33.3%	45.3%
Race/Ethnicity						
American Indian/Alaska	38.5%	53.2%	38.1%	56.3%	40.1%	58.8%
Asian	32.1%	42.7%	31.0%	44.3%	32.4%	36.6%
Black/African American	35.4%	70.1%	39.5%	66.7%	40.0%	66.4%
Hispanic/Latino any race	38.3%	67.5%	40.5%	65.2%	41.0%	64.3%
Native Hawaiian/Pacific	*	*	*	*	*	*
Two or More Races	*	*	*	*	*	*
White	31.5%	42.0%	32.4%	38.0%	32.3%	37.1%
English Learner						
Yes	34.9%	75.8%	37.1%	73.2%	36.7%	73.4%
No	32.8%	49.1%	34.3%	46.2%	34.4%	45.3%
Students with Disabilities						
Yes	29.8%	77.7%	29.8%	78.4%	28.9%	71.9%
No	33.2%	47.5%	34.8%	44.4%	35.0%	43.9%
Free/Reduced Price Meal Eligible						
Yes	35.4%	68.2%	39.0%	64.6%	39.2%	64.1%
No	32.1%	43.2%	32.8%	39.3%	32.7%	38.0%
State Total	32.9%	49.8%	34.4%	46.9%	34.5%	46.0%

Source: P20WIN data and SDE Calculations

* Data suppressed to protect confidentiality

† This column is a subset of the column immediately preceding it.

Table 4: Credit Attainment by District at All Connecticut Public Universities and Community Colleges

District ID	District	Graduating Class of 2010		Graduating Class of 2011		Graduating Class of 2012	
		Percent Enrolled in 16 Months	+Percent Earning 24 Credits	Percent Enrolled in 16 Months	+Percent Earning 24 Credits	Percent Enrolled in 16 Months	+Percent Earning 24 Credits
0020011	Ansonia School District	41.6%	67.2%	34.3%	69.4%	49.7%	67.8%
0040011	Avon School District	26.3%	75.0%	30.9%	70.1%	29.6%	81.9%
0070011	Berlin School District	43.4%	75.5%	49.2%	71.3%	51.2%	75.2%
0090011	Bethel School District	40.6%	78.6%	42.4%	69.3%	51.7%	79.2%
0110011	Bloomfield School District	43.0%	57.4%	48.0%	63.9%	44.6%	46.7%
0120011	Bolton School District	51.5%	76.5%	54.4%	83.8%	57.6%	78.9%
0140011	Branford School District	33.4%	75.5%	39.4%	60.4%	40.0%	66.3%
0150011	Bridgeport School District	38.7%	49.3%	41.1%	51.1%	39.4%	51.8%
0170011	Bristol School District	45.3%	69.6%	48.1%	67.7%	44.0%	74.6%
0180011	Brookfield School District	38.2%	77.8%	42.6%	77.1%	45.6%	72.2%
0230011	Canton School District	36.1%	62.5%	33.9%	66.7%	31.9%	64.9%
0250011	Cheshire School District	35.7%	73.8%	42.6%	69.7%	42.3%	78.4%
0270011	Clinton School District	41.4%	70.7%	43.3%	59.0%	39.0%	87.0%
0280011	Colchester School District	53.0%	70.2%	51.5%	71.8%	52.1%	66.9%
0320011	Coventry School District	50.9%	73.7%	41.8%	72.1%	52.9%	67.1%
0330011	Cromwell School District	49.0%	68.6%	51.6%	63.4%	48.9%	70.1%
0340011	Danbury School District	49.1%	71.2%	52.6%	65.1%	53.1%	68.9%
0350011	Darien School District	16.1%	52.3%	10.1%	62.5%	11.8%	61.1%
0370011	Derby School District	32.6%	50.0%	38.9%	74.3%	44.4%	65.0%
0400011	East Granby School District	41.3%	*	34.7%	*	40.0%	62.5%
0410011	East Haddam School District	52.3%	68.4%	41.4%	88.9%	52.2%	79.2%
0420011	East Hampton School District	44.1%	66.7%	53.4%	68.6%	48.4%	76.3%
0430011	East Hartford School District	41.5%	56.4%	42.9%	57.3%	44.8%	57.1%
0440011	East Haven School District	32.2%	66.2%	46.0%	65.6%	55.8%	62.5%
0450011	East Lyme School District	38.2%	60.9%	44.8%	70.6%	39.5%	66.4%
0470011	East Windsor School District	51.5%	62.7%	46.3%	83.8%	46.9%	52.6%
0480011	Ellington School District	57.4%	79.0%	51.5%	71.6%	49.5%	76.1%
0490011	Enfield School District	49.8%	61.2%	49.1%	67.3%	45.7%	73.3%
0510011	Fairfield School District	25.3%	63.2%	26.4%	67.3%	27.3%	60.3%
0520011	Farmington School District	42.3%	74.5%	36.4%	66.4%	38.4%	69.4%
0540011	Glastonbury School District	46.5%	75.8%	43.7%	74.2%	41.7%	77.2%
0560011	Granby School District	30.2%	70.4%	31.9%	68.3%	35.4%	71.6%
0570011	Greenwich School District	17.2%	56.9%	21.4%	56.4%	21.0%	67.7%
0580011	Griswold School District	47.6%	53.1%	52.9%	56.7%	44.6%	72.0%
0590011	Groton School District	47.1%	63.0%	50.7%	69.9%	44.9%	65.6%
0600011	Guilford School District	26.4%	63.5%	29.2%	73.3%	30.1%	64.7%
0620011	Hamden School District	29.9%	54.9%	40.3%	69.0%	47.5%	68.4%
0640011	Hartford School District	21.3%	60.6%	22.9%	59.8%	23.2%	70.1%

Table 4: Credit Attainment by District at All Connecticut Public Universities and Community Colleges

District ID	District	Graduating Class of 2010		Graduating Class of 2011		Graduating Class of 2012	
		Percent Enrolled in 16 Months	+Percent Earning 24 Credits	Percent Enrolled in 16 Months	+Percent Earning 24 Credits	Percent Enrolled in 16 Months	+Percent Earning 24 Credits
0690011	Killingly School District	6.1%	*	9.7%	*	14.8%	87.0%
0710011	Lebanon School District	44.6%	74.1%	47.6%	68.6%	49.6%	63.8%
0720011	Ledyard School District	45.8%	50.9%	42.9%	58.2%	49.7%	68.8%
0740011	Litchfield School District	32.1%	64.7%	27.6%	66.7%	37.3%	76.3%
0760011	Madison School District	25.9%	73.0%	18.9%	70.7%	26.1%	70.6%
0770011	Manchester School District	52.7%	65.7%	52.2%	68.0%	49.5%	61.5%
0800011	Meriden School District	41.4%	55.9%	42.8%	54.2%	44.8%	59.7%
0830011	Middletown School District	46.0%	61.2%	50.2%	69.6%	40.5%	63.2%
0840011	Milford School District	43.5%	71.1%	42.0%	72.7%	39.7%	60.3%
0850011	Monroe School District	38.0%	67.3%	43.2%	82.1%	37.3%	73.8%
0860011	Montville School District	52.9%	56.4%	52.0%	66.3%	45.8%	62.0%
0880011	Naugatuck School District	45.3%	61.6%	52.1%	65.6%	56.3%	73.7%
0890011	New Britain School District	48.2%	57.6%	52.0%	51.5%	52.3%	57.7%
0900011	New Canaan School District	13.1%	65.8%	13.4%	53.7%	13.3%	53.5%
0910011	New Fairfield School District	39.7%	64.7%	39.9%	73.6%	39.9%	82.8%
0930011	New Haven School District	34.1%	39.5%	41.5%	46.7%	45.2%	51.1%
0940011	Newington School District	55.6%	70.1%	57.7%	76.3%	54.8%	77.4%
0950011	New London School District	37.9%	32.8%	46.6%	38.6%	53.6%	42.7%
0960011	New Milford School District	45.1%	77.5%	39.3%	80.9%	50.1%	78.8%
0970011	Newtown School District	32.4%	67.4%	33.7%	69.2%	30.4%	73.6%
0990011	North Branford School District	45.6%	64.2%	44.4%	63.9%	42.4%	76.6%
1010011	North Haven School District	42.2%	64.8%	53.0%	72.0%	46.7%	78.6%
1020011	North Stonington School Dist	40.4%	*	42.6%	69.2%	33.3%	*
1030011	Norwalk School District	47.7%	57.7%	50.1%	57.7%	49.5%	56.3%
1060011	Old Saybrook School District	37.0%	70.5%	39.8%	84.4%	28.3%	79.5%
1080011	Oxford School District	32.1%	63.9%	50.3%	74.7%	50.7%	68.6%
1090011	Plainfield School District	49.5%	56.1%	44.5%	69.9%	45.9%	55.3%
1100011	Plainville School District	54.7%	59.5%	52.6%	61.8%	52.3%	65.7%
1110011	Plymouth School District	42.7%	56.6%	46.2%	63.3%	45.2%	63.2%
1130011	Portland School District	46.6%	70.7%	45.7%	75.7%	45.9%	79.5%
1160011	Putnam School District	51.9%	46.3%	35.4%	47.8%	37.1%	56.5%
1180011	Ridgefield School District	21.7%	76.3%	20.0%	78.8%	20.5%	74.2%
1190011	Rocky Hill School District	52.1%	60.4%	57.8%	74.0%	56.4%	82.7%
1240011	Seymour School District	43.2%	73.8%	53.1%	70.6%	55.7%	75.6%
1260011	Shelton School District	36.8%	70.3%	39.5%	71.3%	43.5%	75.8%
1280011	Simsbury School District	29.5%	70.3%	26.4%	62.6%	30.6%	77.7%
1290011	Somers School District	41.7%	69.1%	44.2%	73.8%	35.0%	77.1%
1310011	Southington School District	49.3%	66.2%	52.9%	69.9%	50.3%	74.3%

Table 4: Credit Attainment by District at All Connecticut Public Universities and Community Colleges

District ID	District	Graduating Class of 2010		Graduating Class of 2011		Graduating Class of 2012	
		Percent Enrolled in 16 Months	+Percent Earning 24 Credits	Percent Enrolled in 16 Months	+Percent Earning 24 Credits	Percent Enrolled in 16 Months	+Percent Earning 24 Credits
1320011	South Windsor School District	56.0%	74.2%	53.3%	71.1%	51.1%	72.3%
1340011	Stafford School District	54.6%	71.7%	52.2%	71.2%	34.5%	79.6%
1350011	Stamford School District	46.0%	60.6%	49.1%	57.2%	49.3%	60.0%
1370011	Stonington School District	36.8%	67.6%	35.7%	68.6%	25.0%	60.5%
1380011	Stratford School District	41.6%	65.9%	50.9%	69.3%	48.0%	64.9%
1390011	Suffield School District	38.9%	67.1%	38.5%	73.4%	35.1%	70.1%
1400011	Thomaston School District	47.4%	75.6%	53.1%	69.2%	51.8%	55.8%
1410011	Thompson School District	38.5%	60.0%	31.4%	66.7%	46.7%	78.6%
1420011	Tolland School District	45.6%	78.8%	50.0%	71.8%	50.2%	74.3%
1430011	Torrington School District	42.6%	67.2%	43.6%	72.8%	40.7%	64.4%
1440011	Trumbull School District	39.3%	75.5%	40.0%	66.8%	34.2%	78.0%
1460011	Vernon School District	47.7%	68.9%	46.0%	65.8%	52.2%	70.2%
1480011	Wallingford School District	36.9%	58.5%	47.0%	71.1%	50.8%	73.8%
1510011	Waterbury School District	43.8%	55.7%	50.8%	60.1%	48.8%	55.1%
1520011	Waterford School District	49.8%	71.0%	49.0%	65.0%	44.6%	66.7%
1530011	Watertown School District	52.8%	64.0%	48.5%	73.2%	52.5%	72.2%
1540011	Westbrook School District	40.5%	76.7%	47.2%	76.5%	45.3%	70.6%
1550011	West Hartford School District	38.6%	72.2%	40.9%	74.4%	41.5%	72.2%
1560011	West Haven School District	44.4%	60.9%	40.4%	57.5%	50.2%	59.1%
1570011	Weston School District	15.0%	61.3%	15.1%	82.8%	15.4%	51.7%
1580011	Westport School District	11.1%	56.8%	12.8%	55.9%	16.4%	52.2%
1590011	Wethersfield School District	46.6%	77.1%	44.3%	71.9%	51.9%	75.7%
1610011	Wilton School District	23.6%	64.4%	19.8%	63.3%	18.3%	70.2%
1630011	Windham School District	53.9%	56.8%	47.5%	62.4%	51.7%	57.7%
1640011	Windsor School District	47.8%	63.0%	49.2%	62.7%	49.5%	54.2%
1650011	Windsor Locks School District	46.3%	71.0%	38.1%	73.3%	40.0%	51.9%
1660011	Wolcott School District	59.1%	75.8%	51.9%	73.2%	59.2%	74.4%
2010012	Regional School District 01	41.0%	56.1%	19.7%	70.8%	24.8%	66.7%
2040012	Regional School District 04	30.2%	71.4%	25.3%	76.3%	29.3%	77.3%
2050012	Regional School District 05	28.8%	73.7%	33.6%	76.7%	37.7%	78.0%
2060012	Regional School District 06	30.8%	79.2%	51.6%	74.5%	38.1%	71.9%
2070012	Regional School District 07	43.2%	68.3%	47.2%	68.8%	41.9%	66.3%
2080012	Regional School District 08	51.4%	74.5%	51.5%	80.5%	50.9%	81.7%
2090012	Regional School District 09	21.3%	77.6%	24.1%	72.5%	26.9%	76.2%
2100012	Regional School District 10	42.1%	68.3%	47.4%	72.0%	48.0%	73.8%
2110012	Regional School District 11	57.1%	75.0%	50.0%	*	47.6%	*
2120012	Regional School District 12	34.7%	57.7%	29.6%	75.0%	31.3%	65.0%
2130012	Regional School District 13	48.3%	80.0%	43.1%	66.1%	44.6%	83.9%

Trends in Enrollment, Credit Attainment, and Remediation
at Connecticut Public Universities and Community Colleges:
Results from P20WIN for the Graduating Classes of 2010, 2011, and 2012

Table 4: Credit Attainment by District at All Connecticut Public Universities and Community Colleges

District ID	District	Graduating Class of 2010		Graduating Class of 2011		Graduating Class of 2012	
		Percent Enrolled in 16 Months	†Percent Earning 24 Credits	Percent Enrolled in 16 Months	†Percent Earning 24 Credits	Percent Enrolled in 16 Months	†Percent Earning 24 Credits
2140012	Regional School District 14	32.5%	75.4%	42.9%	74.4%	33.5%	68.8%
2150012	Regional School District 15	45.6%	71.8%	38.4%	71.6%	39.2%	73.6%
2160012	Regional School District 16	48.7%	66.7%	56.2%	63.0%	48.6%	71.1%
2170012	Regional School District 17	50.0%	64.9%	41.4%	77.1%	40.0%	70.8%
2180012	Regional School District 18	24.5%	79.2%	27.5%	58.3%	35.6%	72.2%
2190012	Regional School District 19	49.6%	73.9%	47.4%	79.7%	52.9%	76.6%
2410014	Capitol Region Ed. Council	19.6%	66.7%	20.7%	68.4%	22.2%	69.8%
2530014	East CT Reg. Ed. Service Center	*	*	*	*	36.7%	48.3%
2680013	Common Ground HS District	41.4%	*	45.9%	*	56.7%	*
2690013	The Bridge Academy District	38.7%	*	44.8%	*	38.9%	*
2720013	Explorations District	34.5%	*	*	*	*	*
2820013	Stamford Academy District	*	*	*	*	30.0%	*
9000016	CT Tech Educ & Career System	36.1%	53.5%	36.2%	50.1%	38.3%	56.3%
9010022	Norwich Free Academy District	50.8%	65.1%	49.8%	55.4%	49.0%	62.3%
9020022	The Gilbert School District	56.1%	43.3%	49.2%	75.9%	42.9%	66.7%
9030022	Woodstock Academy District	50.9%	65.0%	45.7%	69.0%	49.5%	68.4%

Source: P20WIN data and SDE calculations

* Data suppressed to protect confidentiality

† This column is a subset of the column immediately preceding it.

Table 5: Remediation by District at Connecticut State University System and Community Colleges

District ID	District	Graduating Class of 2010		Graduating Class of 2011		Graduating Class of 2012	
		Percent Enrolled in 16 Months	†Percent Enrolled in Remediation	Percent Enrolled in 16 Months	†Percent Enrolled in Remediation	Percent Enrolled in 16 Months	†Percent Enrolled in Remediation
0020011	Ansonia School District	36.6%	69.5%	31.5%	62.2%	45.1%	49.4%
0040011	Avon School District	16.4%	28.9%	20.1%	28.0%	20.4%	31.6%
0070011	Berlin School District	33.6%	40.5%	41.9%	36.5%	41.3%	35.6%
0090011	Bethel School District	37.4%	32.6%	36.1%	20.9%	41.8%	24.7%
0110011	Bloomfield School District	40.5%	65.6%	42.0%	66.7%	41.1%	63.8%
0120011	Bolton School District	40.9%	44.4%	45.6%	25.8%	39.4%	34.6%
0140011	Branford School District	27.4%	46.0%	32.0%	59.3%	34.7%	52.9%
0150011	Bridgeport School District	34.9%	79.3%	37.0%	70.0%	36.2%	72.7%
0170011	Bristol School District	40.5%	45.1%	41.8%	51.0%	38.9%	47.4%
0180011	Brookfield School District	30.1%	41.0%	32.4%	24.1%	36.1%	19.8%
0230011	Canton School District	29.3%	28.2%	27.8%	34.4%	25.9%	20.0%
0250011	Cheshire School District	23.5%	36.6%	32.4%	35.6%	30.2%	32.8%
0270011	Clinton School District	34.3%	39.6%	37.6%	35.8%	30.5%	30.6%
0280011	Colchester School District	46.6%	28.4%	43.6%	40.0%	43.7%	30.8%
0320011	Coventry School District	39.3%	38.6%	37.7%	38.2%	46.4%	35.9%
0330011	Cromwell School District	42.7%	44.3%	43.4%	42.0%	40.9%	30.4%
0340011	Danbury School District	42.5%	44.9%	46.3%	39.7%	48.8%	36.2%
0350011	Darien School District	12.8%	*	8.9%	*	9.2%	25.0%
0370011	Derby School District	30.2%	57.7%	37.8%	47.1%	40.0%	58.3%
0400011	East Granby School District	37.0%	*	29.3%	*	35.0%	*
0410011	East Haddam School District	47.7%	21.2%	33.3%	31.0%	50.0%	28.3%
0420011	East Hampton School District	35.7%	41.2%	48.9%	39.1%	38.9%	29.5%
0430011	East Hartford School District	38.6%	60.8%	37.7%	53.5%	38.4%	54.2%
0440011	East Haven School District	30.1%	58.3%	43.4%	60.0%	52.3%	55.6%
0450011	East Lyme School District	26.2%	40.5%	32.0%	27.5%	29.4%	38.1%
0470011	East Windsor School District	45.5%	33.3%	43.8%	48.6%	40.7%	48.5%
0480011	Ellington School District	47.0%	33.7%	45.0%	19.5%	38.7%	27.8%
0490011	Enfield School District	45.6%	53.7%	44.8%	48.0%	40.6%	44.3%
0510011	Fairfield School District	19.8%	42.5%	20.8%	36.9%	20.2%	47.1%
0520011	Farmington School District	31.2%	47.7%	28.8%	35.9%	29.1%	38.1%
0540011	Glastonbury School District	32.9%	21.7%	32.3%	23.3%	25.5%	19.0%
0560011	Granby School District	22.9%	24.4%	25.5%	18.8%	28.6%	29.6%
0570011	Greenwich School District	11.1%	54.7%	16.3%	49.5%	13.7%	50.6%
0580011	Griswold School District	42.9%	45.2%	45.9%	47.4%	41.7%	35.7%
0590011	Groton School District	35.8%	47.0%	38.8%	38.5%	29.8%	47.1%
0600011	Guilford School District	18.6%	44.2%	23.3%	36.7%	20.6%	20.7%
0620011	Hamden School District	25.8%	64.5%	35.9%	52.2%	44.4%	54.2%
0640011	Hartford School District	16.0%	50.6%	17.7%	53.0%	18.4%	52.2%

Table 5: Remediation by District at Connecticut State University System and Community Colleges

District ID	District	Graduating Class of 2010		Graduating Class of 2011		Graduating Class of 2012	
		Percent Enrolled in 16 Months	†Percent Enrolled in Remediation	Percent Enrolled in 16 Months	†Percent Enrolled in Remediation	Percent Enrolled in 16 Months	†Percent Enrolled in Remediation
0690011	Killingly School District	*	*	*	*	8.4%	*
0710011	Lebanon School District	35.5%	46.5%	39.5%	37.9%	44.4%	28.8%
0720011	Ledyard School District	38.6%	56.0%	37.7%	46.3%	40.4%	38.5%
0740011	Litchfield School District	26.4%	42.9%	23.0%	*	27.5%	*
0760011	Madison School District	14.7%	31.0%	13.0%	25.0%	18.1%	22.0%
0770011	Manchester School District	44.6%	47.0%	45.2%	55.2%	43.2%	52.5%
0800011	Meriden School District	37.2%	65.3%	39.1%	57.1%	42.0%	62.6%
0830011	Middletown School District	41.7%	53.3%	45.5%	53.6%	34.9%	63.4%
0840011	Milford School District	37.1%	51.0%	34.8%	49.0%	35.2%	51.5%
0850011	Monroe School District	30.3%	42.2%	27.1%	36.7%	27.2%	23.9%
0860011	Montville School District	48.6%	38.6%	41.8%	37.8%	40.3%	51.9%
0880011	Naugatuck School District	40.7%	48.1%	47.3%	52.7%	50.3%	48.8%
0890011	New Britain School District	43.9%	68.0%	49.6%	61.6%	49.2%	55.5%
0900011	New Canaan School District	9.0%	30.8%	10.1%	32.3%	10.8%	17.1%
0910011	New Fairfield School District	33.5%	41.9%	33.8%	33.8%	32.6%	17.1%
0930011	New Haven School District	32.3%	71.0%	39.3%	70.1%	42.5%	74.5%
0940011	Newington School District	45.0%	46.1%	48.4%	39.5%	47.1%	35.5%
0950011	New London School District	35.9%	70.9%	43.3%	59.7%	48.2%	47.5%
0960011	New Milford School District	38.3%	24.5%	33.1%	16.8%	41.5%	18.9%
0970011	Newtown School District	25.2%	39.0%	27.6%	28.2%	21.9%	27.6%
0990011	North Branford School District	38.1%	50.0%	41.7%	43.6%	39.1%	44.1%
1010011	North Haven School District	36.5%	53.7%	44.4%	49.2%	38.1%	42.7%
1020011	North Stonington School Dist	30.8%	*	34.4%	33.3%	29.2%	*
1030011	Norwalk School District	43.5%	62.9%	45.2%	64.6%	44.0%	54.5%
1060011	Old Saybrook School District	30.3%	30.6%	24.8%	*	22.5%	*
1080011	Oxford School District	21.4%	37.5%	38.3%	31.6%	40.6%	41.1%
1090011	Plainfield School District	47.0%	51.6%	38.8%	48.1%	41.6%	51.9%
1100011	Plainville School District	51.2%	55.8%	48.8%	48.0%	48.7%	38.9%
1110011	Plymouth School District	35.5%	65.9%	40.8%	47.2%	39.7%	46.0%
1130011	Portland School District	38.6%	35.3%	39.5%	46.9%	38.8%	36.4%
1160011	Putnam School District	49.4%	46.2%	30.8%	45.0%	35.5%	59.1%
1180011	Ridgefield School District	12.4%	15.1%	12.7%	22.2%	12.7%	21.8%
1190011	Rocky Hill School District	40.8%	48.3%	45.2%	42.7%	44.6%	44.8%
1240011	Seymour School District	36.2%	50.7%	41.3%	39.4%	52.1%	65.8%
1260011	Shelton School District	32.0%	46.0%	32.6%	42.4%	35.0%	44.1%
1280011	Simsbury School District	17.5%	28.6%	19.1%	22.7%	18.2%	16.7%
1290011	Somers School District	38.6%	45.1%	37.0%	23.5%	29.2%	30.0%
1310011	Southington School District	42.5%	43.3%	44.6%	44.2%	44.4%	35.9%

Table 5: Remediation by District at Connecticut State University System and Community Colleges

District ID	District	Graduating Class of 2010		Graduating Class of 2011		Graduating Class of 2012	
		Percent Enrolled in 16 Months	†Percent Enrolled in Remediation	Percent Enrolled in 16 Months	†Percent Enrolled in Remediation	Percent Enrolled in 16 Months	†Percent Enrolled in Remediation
1320011	South Windsor School District	44.0%	25.6%	41.7%	29.1%	38.6%	26.8%
1340011	Stafford School District	46.4%	33.3%	47.8%	31.5%	31.7%	26.7%
1350011	Stamford School District	38.5%	61.8%	43.4%	63.1%	41.4%	62.7%
1370011	Stonington School District	27.6%	51.0%	24.5%	20.8%	18.0%	38.7%
1380011	Stratford School District	39.1%	51.6%	47.4%	52.4%	43.9%	52.4%
1390011	Suffield School District	32.0%	41.5%	32.7%	31.3%	26.7%	45.1%
1400011	Thomaston School District	41.1%	41.0%	51.0%	54.0%	48.2%	50.0%
1410011	Thompson School District	36.3%	54.5%	26.7%	47.8%	38.9%	37.1%
1420011	Tolland School District	34.2%	29.5%	37.7%	28.9%	40.4%	33.0%
1430011	Torrington School District	35.3%	50.0%	39.0%	40.2%	34.3%	56.5%
1440011	Trumbull School District	28.4%	37.2%	30.3%	29.1%	24.8%	27.3%
1460011	Vernon School District	38.6%	43.9%	39.1%	32.0%	46.1%	40.2%
1480011	Wallingford School District	32.1%	49.7%	42.0%	45.2%	46.3%	37.6%
1510011	Waterbury School District	38.5%	69.2%	44.6%	67.5%	43.4%	69.0%
1520011	Waterford School District	36.7%	48.1%	37.1%	44.1%	35.6%	26.6%
1530011	Watertown School District	44.9%	60.8%	42.0%	36.1%	44.7%	45.9%
1540011	Westbrook School District	27.0%	*	36.1%	*	34.7%	46.2%
1550011	West Hartford School District	29.4%	47.5%	29.4%	41.9%	29.9%	41.7%
1560011	West Haven School District	41.6%	66.4%	38.6%	60.9%	46.5%	65.2%
1570011	Weston School District	9.2%	*	8.9%	*	10.6%	*
1580011	Westport School District	8.3%	48.5%	9.3%	*	11.9%	*
1590011	Wethersfield School District	39.5%	37.8%	37.0%	43.0%	39.3%	38.7%
1610011	Wilton School District	15.9%	*	14.2%	20.9%	10.9%	*
1630011	Windham School District	45.1%	55.9%	40.2%	50.0%	46.4%	57.1%
1640011	Windsor School District	43.1%	50.0%	41.8%	53.8%	42.6%	45.2%
1650011	Windsor Locks School District	41.8%	44.6%	33.9%	52.5%	34.1%	50.0%
1660011	Wolcott School District	50.7%	46.6%	42.6%	48.9%	48.3%	39.2%
2010012	Regional School District 01	32.0%	62.5%	16.4%	*	18.8%	*
2040012	Regional School District 04	25.9%	36.1%	18.0%	44.4%	23.3%	25.7%
2050012	Regional School District 05	21.2%	29.8%	24.7%	31.6%	29.4%	36.3%
2060012	Regional School District 06	26.9%	47.6%	40.7%	40.5%	32.1%	40.7%
2070012	Regional School District 07	32.1%	39.3%	38.1%	40.0%	31.8%	42.9%
2080012	Regional School District 08	39.3%	26.2%	43.2%	22.2%	40.1%	22.3%
2090012	Regional School District 09	11.7%	37.0%	13.2%	*	19.2%	*
2100012	Regional School District 10	34.4%	44.8%	33.5%	41.4%	39.9%	42.7%
2110012	Regional School District 11	45.7%	*	46.4%	*	45.2%	*
2120012	Regional School District 12	24.0%	*	23.5%	*	26.6%	*
2130012	Regional School District 13	42.1%	31.1%	36.9%	45.8%	39.6%	34.5%

Table 5: Remediation by District at Connecticut State University System and Community Colleges

District ID	District	Graduating Class of 2010		Graduating Class of 2011		Graduating Class of 2012	
		Percent Enrolled in 16 Months	†Percent Enrolled in Remediation	Percent Enrolled in 16 Months	†Percent Enrolled in Remediation	Percent Enrolled in 16 Months	†Percent Enrolled in Remediation
2140012	Regional School District 14	26.0%	42.3%	31.0%	43.1%	27.7%	41.5%
2150012	Regional School District 15	34.5%	36.4%	29.4%	32.4%	30.4%	27.8%
2160012	Regional School District 16	45.2%	48.3%	50.6%	41.1%	41.1%	47.4%
2170012	Regional School District 17	42.9%	34.8%	36.7%	32.3%	32.8%	32.2%
2180012	Regional School District 18	16.3%	*	20.6%	40.7%	20.8%	*
2190012	Regional School District 19	31.5%	27.1%	28.9%	27.8%	36.5%	23.0%
2410014	Capitol Region Ed Council	15.8%	48.3%	15.9%	43.2%	16.2%	47.8%
2530014	East CT Reg Ed Service Center	*	*	*	*	32.9%	53.8%
2680013	Common Ground HS District	41.4%	*	43.2%	*	43.3%	*
2690013	The Bridge Academy District	29.0%	*	37.9%	*	33.3%	*
2720013	Explorations District	34.5%	*	*	*	*	*
2820013	Stamford Academy District	*	*	*	*	30.0%	*
9000016	CT Tech Educ & Career System	34.4%	68.6%	34.7%	64.4%	36.3%	66.5%
9010022	Norwich Free Academy District	44.8%	50.8%	43.7%	49.6%	42.2%	40.9%
9020022	The Gilbert School District	47.7%	62.7%	35.6%	66.7%	38.1%	62.5%
9030022	Woodstock Academy District	43.5%	41.0%	40.8%	44.3%	42.2%	36.2%

Source: P20WIN data and SDE calculations

* Data suppressed to protect confidentiality

† This column is a subset of the column immediately preceding it.

Table 6: Credit Attainment by School at All Connecticut Public Universities and Community Colleges

School ID	School	Graduating Class of 2010		Graduating Class of 2011		Graduating Class of 2012	
		Percent Enrolled in 16 Months	†Percent Earning 24 Credits	Percent Enrolled in 16 Months	†Percent Earning 24 Credits	Percent Enrolled in 16 Months	†Percent Earning 24 Credits
0026111	Ansonia High School	41.6%	67.2%	34.5%	69.4%	49.7%	67.8%
0046111	Avon High School	26.3%	75.0%	30.9%	70.1%	29.6%	81.9%
0076111	Berlin High School	43.4%	75.5%	49.2%	71.3%	51.2%	75.2%
0096111	Bethel High School	40.6%	78.6%	42.4%	69.3%	51.7%	79.2%
0116111	Bloomfield High School	44.2%	58.5%	47.9%	62.7%	46.8%	45.8%
0126111	Bolton High School	51.5%	76.5%	54.4%	83.8%	57.6%	78.9%
0146111	Branford High School	33.4%	75.5%	39.4%	60.4%	40.0%	66.3%
0156111	Bassick High School	34.7%	39.7%	32.4%	35.6%	40.3%	40.6%
0156211	Central High School	43.1%	54.8%	46.3%	60.4%	40.4%	59.6%
0156311	Harding High School	34.6%	44.0%	38.6%	39.8%	36.9%	43.0%
0176111	Bristol Central High School	45.0%	66.4%	45.1%	68.3%	38.6%	71.2%
0176211	Bristol Eastern High School	47.0%	73.1%	51.4%	67.3%	51.1%	77.5%
0186111	Brookfield High School	38.2%	77.8%	42.6%	77.1%	45.6%	72.2%
0236111	Canton High School	36.1%	62.5%	33.9%	66.7%	31.9%	64.9%
0256111	Cheshire High School	36.2%	73.8%	43.5%	69.5%	43.0%	78.4%
0276111	The Morgan School	41.4%	70.7%	43.3%	59.0%	39.0%	87.0%
0286111	Bacon Academy	53.0%	70.2%	51.5%	71.8%	52.1%	66.9%
0326111	Coventry High School	51.4%	73.7%	41.8%	72.1%	52.9%	67.1%
0336111	Cromwell High School	49.0%	68.6%	51.6%	63.4%	48.9%	70.1%
0346111	Danbury High School	50.2%	71.1%	53.3%	65.1%	54.8%	68.9%
0356111	Darien High School	16.1%	52.3%	10.1%	62.5%	11.8%	61.1%
0376111	Derby High School	32.6%	50.0%	38.9%	74.3%	44.4%	65.0%
0406111	East Granby High School	41.3%	*	34.7%	*	40.0%	62.5%
0416111	Nathan Hale-Ray High School	53.8%	68.4%	41.4%	88.9%	52.2%	79.2%
0426111	East Hampton High School	45.0%	66.7%	54.3%	68.6%	49.7%	76.3%
0436211	East Hartford High School	48.8%	55.3%	53.6%	55.2%	55.0%	54.3%
0436311	Connecticut IB Academy	21.4%	*	30.3%	*	40.0%	*
0446111	East Haven High School	33.3%	66.2%	47.5%	65.6%	56.8%	62.5%
0456111	East Lyme High School	38.2%	60.9%	44.8%	70.6%	39.5%	66.4%
0476111	East Windsor High School	51.5%	62.7%	46.3%	83.8%	46.9%	52.6%
0486111	Ellington High School	57.4%	79.0%	51.5%	71.6%	49.5%	76.1%
0496111	Enfield High School	48.5%	59.4%	48.7%	73.2%	43.8%	71.4%
0496211	Enrico Fermi High School	51.2%	62.5%	49.8%	62.5%	47.1%	74.4%
0516011	Fairfield Ludlowe High School	23.1%	63.0%	23.4%	65.8%	25.4%	59.6%
0516211	Fairfield Warde High School	27.5%	63.3%	29.8%	68.6%	29.5%	61.1%
0526111	Farmington High School	42.3%	74.5%	36.4%	66.4%	38.4%	69.4%
0546111	Glastonbury High School	46.5%	75.8%	43.7%	74.2%	41.7%	77.2%
0566111	Granby Memorial High School	30.2%	70.4%	31.9%	68.3%	35.4%	71.6%

Table 6: Credit Attainment by School at All Connecticut Public Universities and Community Colleges

School ID	School	Graduating Class of 2010		Graduating Class of 2011		Graduating Class of 2012	
		Percent Enrolled in 16 Months	†Percent Earning 24 Credits	Percent Enrolled in 16 Months	†Percent Earning 24 Credits	Percent Enrolled in 16 Months	†Percent Earning 24 Credits
0576111	Greenwich High School	17.2%	56.9%	21.4%	56.4%	21.0%	67.7%
0586211	Griswold High School	47.6%	53.1%	52.9%	56.7%	44.6%	72.0%
0596111	Robert E. Fitch High School	47.1%	63.0%	50.7%	69.9%	44.9%	65.6%
0606111	Guilford High School	26.4%	63.5%	29.2%	73.3%	30.1%	64.7%
0626111	Hamden High School	30.0%	54.9%	40.3%	69.0%	47.5%	68.4%
0646011	Culinary Arts Academy at Weaver HS	*	*	*	*	15.9%	*
0646311	Weaver High School	35.3%	40.8%	*	*	*	*
0646411	Classical Magnet School	26.2%	*	49.4%	*	43.9%	63.9%
0646511	Sports and Medical Sciences Academy	61.8%	66.0%	47.4%	65.2%	52.5%	67.3%
0646611	Pathways Academy of Tech & Design	58.2%	47.8%	54.7%	48.9%	40.0%	68.8%
0646711	Univ. HS of Science & Engineering	36.4%	65.0%	40.0%	71.4%	46.8%	80.6%
0646911	Capital Preparatory Magnet School	*	*	40.7%	*	*	*
0647111	Bulkeley High School	6.6%	*	4.7%	*	5.1%	*
0647211	HPHS Engineering/Green Tech Acad.	*	*	*	*	20.8%	55.0%
0647411	HPHS Law and Government Academy	20.9%	*	13.4%	*	11.4%	*
0647511	HPHS Nursing/Health Sciences Acad	*	*	11.1%	*	*	*
0647711	Journalism/Media Acad. Magnet Schl	*	*	*	*	12.2%	*
0696111	Killingly High School	6.1%	*	9.7%	*	14.8%	87.0%
0716211	Lyman Memorial High School	44.6%	74.1%	47.6%	68.6%	49.6%	63.8%
0726111	Ledyard High School	45.8%	50.9%	42.9%	58.2%	49.7%	68.8%
0746111	Litchfield High School	32.1%	64.7%	27.6%	66.7%	37.3%	76.3%
0766111	Daniel Hand High School	26.0%	73.0%	18.9%	70.7%	26.1%	70.6%
0776111	Manchester High School	54.3%	65.7%	55.1%	68.0%	52.7%	61.5%
0806111	Francis T. Maloney High School	40.7%	56.4%	43.3%	60.6%	48.6%	59.3%
0806211	Orville H. Platt High School	42.2%	55.4%	42.2%	46.7%	40.4%	60.2%
0836211	Middletown High School	46.0%	61.2%	50.2%	69.6%	41.2%	63.2%
0846211	Jonathan Law High School	41.2%	72.6%	40.7%	71.6%	36.8%	56.0%
0846311	Joseph A. Foran High School	45.8%	69.7%	43.1%	73.6%	42.6%	64.0%
0856111	Masuk High School	38.0%	67.3%	43.2%	82.1%	37.3%	73.8%
0866111	Montville High School	55.3%	56.4%	53.2%	66.3%	47.7%	62.0%
0886111	Naugatuck High School	45.3%	61.6%	52.1%	65.6%	56.3%	73.7%
0896111	New Britain High School	48.6%	57.6%	52.7%	51.5%	52.8%	57.7%
0906111	New Canaan High School	13.1%	65.8%	13.4%	53.7%	13.3%	53.5%
0916111	New Fairfield High School	39.7%	64.7%	39.9%	73.6%	39.9%	82.8%
0936011	Metropolitan Business Academy	48.3%	*	43.8%	*	54.1%	55.0%
0936111	Wilbur Cross High School	32.5%	30.0%	39.0%	34.6%	40.3%	39.2%
0936211	James Hillhouse High School	39.7%	45.0%	51.8%	49.0%	43.0%	41.2%
0936311	Hill Regional Career High School	38.6%	52.5%	47.3%	53.5%	51.4%	69.4%

Table 6: Credit Attainment by School at All Connecticut Public Universities and Community Colleges

School ID	School	Graduating Class of 2010		Graduating Class of 2011		Graduating Class of 2012	
		Percent Enrolled in 16 Months	†Percent Earning 24 Credits	Percent Enrolled in 16 Months	†Percent Earning 24 Credits	Percent Enrolled in 16 Months	†Percent Earning 24 Credits
0936411	Cooperative High School	39.2%	42.1%	35.1%	54.5%	50.8%	68.3%
0936611	High School In The Community	34.8%	39.1%	60.0%	66.7%	46.7%	47.6%
0936711	Sound School	34.4%	*	30.9%	*	55.0%	50.0%
0936811	Creed Health/Sport Sciences HS	36.1%	*	36.4%	*	38.1%	*
0937011	New Haven Academy	44.4%	*	40.0%	60.0%	66.7%	*
0946111	Newington High School	55.6%	70.1%	57.7%	76.3%	54.8%	77.4%
0956111	New London High School	38.2%	32.8%	46.9%	38.6%	53.6%	42.7%
0966111	New Milford High School	45.2%	77.5%	39.7%	80.9%	50.6%	78.8%
0976111	Newtown High School	32.4%	67.4%	33.7%	69.2%	30.4%	73.6%
0996111	North Branford High School	45.6%	64.2%	44.4%	63.9%	42.4%	76.6%
1016111	North Haven High School	42.2%	64.8%	53.0%	72.0%	46.7%	78.6%
1026111	Wheeler High School	40.4%	*	42.6%	69.2%	33.3%	*
1036111	Norwalk High School	47.7%	61.5%	51.6%	57.5%	53.0%	58.1%
1036211	Brien McMahon High School	48.6%	56.8%	50.9%	59.5%	47.6%	54.8%
1036311	Norwalk Pathways Academy at Briggs	37.1%	*	*	*	*	*
1066111	Old Saybrook Senior High School	37.0%	70.5%	39.8%	84.4%	28.3%	79.5%
1086011	Oxford High School	32.1%	63.9%	50.3%	74.7%	50.7%	68.6%
1096111	Plainfield High School	49.5%	56.1%	44.5%	69.9%	45.9%	55.3%
1106111	Plainville High School	54.7%	59.5%	52.6%	61.8%	52.3%	65.7%
1116111	Terryville High School	42.7%	56.6%	46.2%	63.3%	45.2%	63.2%
1136111	Portland High School	46.6%	70.7%	45.7%	75.7%	45.9%	79.5%
1166111	Putnam High School	52.6%	46.3%	37.1%	47.8%	38.3%	56.5%
1186111	Ridgefield High School	21.7%	76.3%	20.2%	78.8%	20.5%	74.2%
1196111	Rocky Hill High School	52.1%	60.4%	57.8%	74.0%	56.4%	82.7%
1246111	Seymour High School	43.5%	73.8%	53.1%	70.6%	55.7%	75.6%
1266111	Shelton High School	36.8%	70.3%	39.5%	71.3%	43.5%	75.8%
1286111	Simsbury High School	29.5%	70.3%	26.4%	62.6%	30.6%	77.7%
1296111	Somers High School	42.0%	69.1%	44.2%	73.8%	35.0%	77.1%
1316211	Southington High School	49.3%	66.2%	52.9%	69.9%	50.3%	74.3%
1326211	South Windsor High School	56.2%	74.2%	53.3%	71.1%	51.4%	72.3%
1346111	Stafford High School	54.6%	71.7%	52.2%	71.2%	34.5%	79.6%
1356111	Stamford High School	53.6%	61.7%	51.5%	55.4%	47.6%	57.6%
1356311	Westhill High School	40.4%	58.0%	44.4%	55.9%	49.1%	59.9%
1356411	The Academy of Information Tech	45.4%	66.1%	60.4%	65.4%	54.0%	64.8%
1376111	Stonington High School	36.8%	67.6%	35.7%	68.6%	25.0%	60.5%
1386111	Stratford High School	43.3%	60.2%	53.3%	65.8%	47.6%	62.5%
1386211	Bunnell High School	41.2%	70.6%	50.8%	72.0%	49.4%	67.2%
1396111	Suffield High School	38.9%	67.1%	38.5%	73.4%	35.1%	70.1%

Table 6: Credit Attainment by School at All Connecticut Public Universities and Community Colleges

School ID	School	Graduating Class of 2010		Graduating Class of 2011		Graduating Class of 2012	
		Percent Enrolled in 16 Months	†Percent Earning 24 Credits	Percent Enrolled in 16 Months	†Percent Earning 24 Credits	Percent Enrolled in 16 Months	†Percent Earning 24 Credits
1406211	Thomaston High School	47.4%	75.6%	53.1%	69.2%	51.8%	55.8%
1416111	Tourtellotte Memorial High School	38.5%	60.0%	31.8%	66.7%	47.7%	78.6%
1426111	Tolland High School	45.6%	78.8%	50.0%	71.8%	50.2%	74.3%
1436111	Torrington High School	42.6%	67.2%	43.6%	72.8%	40.7%	64.4%
1446111	Trumbull High School	39.3%	75.5%	40.0%	66.8%	34.2%	78.0%
1466111	Rockville High School	49.1%	68.9%	46.9%	65.8%	53.5%	70.2%
1486111	Lyman Hall High School	35.4%	53.3%	45.6%	63.4%	53.5%	70.1%
1486211	Mark T. Sheehan High School	38.6%	64.0%	49.6%	79.5%	49.4%	78.4%
1516011	Waterbury Arts Magnet School (High)	51.9%	60.7%	56.1%	71.9%	65.0%	59.7%
1516211	Crosby High School	46.7%	59.8%	51.3%	57.9%	47.3%	58.9%
1516311	Wilby High School	39.1%	42.1%	43.6%	51.0%	41.5%	41.2%
1516411	John F. Kennedy High School	45.0%	60.7%	56.4%	63.2%	54.8%	60.1%
1526111	Waterford High School	49.8%	71.0%	49.0%	65.0%	44.6%	66.7%
1536111	Watertown High School	52.8%	64.0%	48.5%	73.2%	52.5%	72.2%
1546111	Westbrook High School	40.5%	76.7%	47.2%	76.5%	45.3%	70.6%
1556111	Conard High School	39.2%	73.4%	42.0%	75.2%	46.8%	73.5%
1556211	Hall High School	38.1%	71.1%	40.7%	73.6%	38.0%	70.5%
1566111	West Haven High School	44.4%	60.9%	40.4%	57.5%	50.2%	59.1%
1576111	Weston High School	15.0%	61.3%	15.1%	82.8%	15.4%	51.7%
1586111	Staples High School	11.1%	56.8%	12.8%	55.9%	16.4%	52.2%
1596111	Wethersfield High School	46.6%	77.1%	44.3%	71.9%	51.9%	75.7%
1616111	Wilton High School	23.6%	64.4%	19.8%	63.3%	18.3%	70.2%
1636111	Windham High School	56.3%	56.8%	47.8%	62.4%	51.7%	57.7%
1646111	Windsor High School	47.8%	63.0%	49.2%	62.7%	49.5%	54.2%
1656111	Windsor Locks High School	46.3%	71.0%	38.1%	73.3%	40.0%	51.9%
1666111	Wolcott High School	59.1%	75.8%	51.9%	73.2%	59.2%	74.4%
2016112	Housatonic Valley Regional High Schl	41.0%	56.1%	19.7%	70.8%	24.8%	66.7%
2046112	Valley Regional High School	30.2%	71.4%	25.3%	76.3%	29.3%	77.3%
2056112	Amity Regional High School	28.8%	73.7%	33.6%	76.7%	37.7%	78.0%
2066112	Wamogo Regional High School	30.8%	79.2%	51.6%	74.5%	38.1%	71.9%
2076112	Northwestern Regional High School	46.6%	68.3%	50.8%	68.8%	46.6%	67.1%
2086112	RHAM High School	51.4%	74.5%	51.5%	80.5%	50.9%	81.7%
2096112	Joel Barlow High School	21.3%	77.6%	24.1%	72.5%	26.9%	76.2%
2106112	Lewis S. Mills High School	42.1%	68.3%	47.4%	72.0%	48.0%	73.8%
2116112	Parish Hill High School	57.1%	75.0%	50.0%	*	47.6%	*
2126112	Shepaug Valley High School	34.7%	57.7%	29.6%	75.0%	31.3%	65.0%
2136112	Coginchaug Regional High School	48.3%	80.0%	43.1%	66.1%	44.6%	83.9%
2146112	Nonnewaug High School	32.5%	75.4%	42.9%	74.4%	33.5%	68.8%

Table 6: Credit Attainment by School at All Connecticut Public Universities and Community Colleges

School ID	School	Graduating Class of 2010		Graduating Class of 2011		Graduating Class of 2012	
		Percent Enrolled in 16 Months	†Percent Earning 24 Credits	Percent Enrolled in 16 Months	†Percent Earning 24 Credits	Percent Enrolled in 16 Months	†Percent Earning 24 Credits
2156212	Pomperaug Regional High School	45.6%	71.8%	38.4%	71.6%	39.2%	73.6%
2166012	Woodland Regional High School	48.7%	66.7%	56.2%	63.0%	48.6%	71.1%
2176112	Haddam-Killingworth High School	50.0%	64.9%	41.4%	77.1%	40.0%	70.8%
2186112	Lyme-Old Lyme High School	24.5%	79.2%	27.5%	58.3%	35.6%	72.2%
2196112	E. O. Smith High School	49.6%	73.9%	47.4%	79.7%	52.9%	76.6%
2415114	Academy of Aerospace & Engineering	*	*	*	*	30.0%	*
2416114	Metro Learning Center Global Studies	38.8%	66.7%	48.4%	60.9%	54.2%	56.4%
2416314	Great Path Academy at MCC	*	*	*	*	20.0%	*
2536014	Arts Capitol Theater Magnet School	*	*	*	*	46.9%	*
2536114	Quinebaug Middle College	*	*	*	*	37.8%	*
2686113	Common Ground High School	41.4%	*	45.9%	*	56.7%	*
2696113	The Bridge Academy	38.7%	*	44.8%	*	38.9%	*
2726113	Explorations	34.5%	*	*	*	*	*
2826013	Stamford Academy	*	*	*	*	30.0%	*
9001116	Bullard-Havens Technical High School	43.6%	46.7%	47.0%	55.8%	45.6%	62.9%
9001216	Henry Abbott Technical High School	38.8%	48.1%	43.7%	45.5%	35.0%	54.5%
9001316	H. H. Ellis Technical High School	25.4%	59.4%	28.7%	54.5%	26.2%	60.6%
9001416	Eli Whitney Technical High School	34.5%	55.2%	38.0%	47.4%	44.3%	37.3%
9001516	A. I. Prince Technical High School	45.5%	42.6%	47.9%	37.3%	45.5%	43.7%
9001616	Howell Cheney Technical High School	34.6%	56.8%	32.3%	58.1%	32.1%	46.7%
9001716	H. C. Wilcox Technical High School	37.2%	67.2%	34.5%	57.4%	45.0%	65.6%
9001816	Vinal Technical High School	27.4%	58.8%	19.2%	29.2%	25.6%	56.3%
9001916	E. C. Goodwin Technical High School	42.2%	37.1%	33.0%	42.4%	37.2%	51.1%
9002016	Norwich Technical High School	38.3%	41.7%	34.5%	50.0%	25.0%	56.8%
9002216	Oliver Wolcott Technical High School	32.2%	64.4%	36.5%	46.2%	30.6%	57.1%
9002316	W. F. Kaynor Technical High School	37.6%	54.8%	40.4%	55.9%	53.5%	66.3%
9002416	Windham Technical High School	41.4%	63.0%	35.0%	61.9%	46.3%	66.1%
9002516	Emmett O'Brien Technical High School	21.3%	56.5%	40.7%	50.0%	36.9%	43.8%
9002616	Platt Technical High School	32.2%	61.2%	29.3%	51.8%	42.0%	65.2%
9002716	Ella T Grasso Southeastern Tech HS	43.2%	43.9%	33.3%	47.5%	31.5%	41.3%
9016122	Norwich Free Academy	50.8%	65.1%	49.8%	55.4%	49.0%	62.3%
9026122	The Gilbert School	56.1%	43.3%	49.2%	75.9%	42.9%	66.7%
9036122	Woodstock Academy	50.9%	65.0%	45.7%	69.0%	49.5%	68.4%

Source: P20WIN data and SDE calculations

* Data suppressed to protect confidentiality

† This column is a subset of the column immediately preceding it.

Table 7: Remediation by School at Connecticut State University System and Community Colleges

School ID	School	Graduating Class of 2010		Graduating Class of 2011		Graduating Class of 2012	
		Percent Enrolled in 16 Months	†Percent Enrolled in Remediation	Percent Enrolled in 16 Months	†Percent Enrolled in Remediation	Percent Enrolled in 16 Months	†Percent Enrolled in Remediation
0026111	Ansonia High School	36.6%	69.5%	31.7%	62.2%	45.1%	49.4%
0046111	Avon High School	16.4%	28.9%	20.1%	28.0%	20.4%	31.6%
0076111	Berlin High School	33.6%	40.5%	41.9%	36.5%	41.3%	35.6%
0096111	Bethel High School	37.4%	32.6%	36.1%	20.9%	41.8%	24.7%
0116111	Bloomfield High School	41.5%	63.9%	41.4%	63.8%	43.5%	64.2%
0126111	Bolton High School	40.9%	44.4%	45.6%	25.8%	39.4%	34.6%
0146111	Branford High School	27.4%	46.0%	32.0%	59.3%	34.7%	52.9%
0156111	Bassick High School	33.2%	81.5%	30.2%	86.8%	37.7%	80.0%
0156211	Central High School	37.9%	74.0%	40.7%	62.1%	35.7%	63.4%
0156311	Harding High School	31.3%	89.5%	35.8%	75.3%	36.1%	85.7%
0176111	Bristol Central High School	40.3%	41.7%	39.1%	44.2%	35.6%	48.6%
0176211	Bristol Eastern High School	41.9%	49.1%	44.8%	56.0%	43.5%	46.3%
0186111	Brookfield High School	30.1%	41.0%	32.4%	24.1%	36.1%	19.8%
0236111	Canton High School	29.3%	28.2%	27.8%	34.4%	25.9%	20.0%
0256111	Cheshire High School	23.8%	36.6%	33.1%	35.9%	30.7%	32.8%
0276111	The Morgan School	34.3%	39.6%	37.6%	35.8%	30.5%	30.6%
0286111	Bacon Academy	46.6%	28.4%	43.6%	40.0%	43.7%	30.8%
0326111	Coventry High School	39.6%	38.6%	37.7%	38.2%	46.4%	35.9%
0336111	Cromwell High School	42.7%	44.3%	43.4%	42.0%	40.9%	30.4%
0346111	Danbury High School	43.5%	45.1%	46.8%	39.5%	50.3%	36.2%
0356111	Darien High School	12.8%	*	8.9%	*	9.2%	25.0%
0376111	Derby High School	30.2%	57.7%	37.8%	47.1%	40.0%	58.3%
0406111	East Granby High School	37.0%	*	29.3%	*	35.0%	*
0416111	Nathan Hale-Ray High School	49.1%	21.2%	33.3%	31.0%	50.0%	28.3%
0426111	East Hampton High School	36.4%	41.2%	49.6%	39.1%	39.9%	29.5%
0436211	East Hartford High School	45.9%	61.7%	48.3%	54.6%	48.7%	55.9%
0436311	Connecticut IB Academy	*	*	*	*	17.1%	*
0446111	East Haven High School	31.2%	58.3%	44.7%	60.0%	53.3%	55.6%
0456111	East Lyme High School	26.2%	40.5%	32.0%	27.5%	29.4%	38.1%
0476111	East Windsor High School	45.5%	33.3%	43.8%	48.6%	40.7%	48.5%
0486111	Ellington High School	47.0%	33.7%	45.0%	19.5%	38.7%	27.8%
0496111	Enfield High School	45.5%	51.1%	46.2%	37.0%	38.1%	52.2%
0496211	Enrico Fermi High School	46.0%	55.7%	44.0%	57.5%	42.3%	39.7%
0516011	Fairfield Ludlowe High School	17.4%	34.4%	17.5%	32.2%	18.8%	39.4%
0516211	Fairfield Warde High School	22.3%	49.3%	24.6%	40.8%	21.7%	54.3%
0526111	Farmington High School	31.2%	47.7%	28.8%	35.9%	29.1%	38.1%
0546111	Glastonbury High School	32.9%	21.7%	32.3%	23.3%	25.5%	19.0%
0566111	Granby Memorial High School	22.9%	24.4%	25.5%	18.8%	28.6%	29.6%
0576111	Greenwich High School	11.1%	54.7%	16.3%	49.5%	13.7%	50.6%

Table 7: Remediation by School at Connecticut State University System and Community Colleges

School ID	School	Graduating Class of 2010		Graduating Class of 2011		Graduating Class of 2012	
		Percent Enrolled in 16 Months	†Percent Enrolled in Remediation	Percent Enrolled in 16 Months	†Percent Enrolled in Remediation	Percent Enrolled in 16 Months	†Percent Enrolled in Remediation
0586211	Griswold High School	42.9%	45.2%	45.9%	47.4%	41.7%	35.7%
0596111	Robert E. Fitch High School	35.8%	47.0%	38.8%	38.5%	29.8%	47.1%
0606111	Guilford High School	18.6%	44.2%	23.3%	36.7%	20.6%	20.7%
0626111	Hamden High School	25.8%	64.5%	35.9%	52.2%	44.4%	54.2%
0646011	Culinary Arts Academy at Weaver HS	*	*	*	*	15.9%	*
0646311	Weaver High School	31.7%	*	*	75.9%	*	*
0646411	Classical Magnet School	20.0%	*	38.6%	*	39.0%	59.4%
0646511	Sports & Medical Sciences Academy	52.6%	45.0%	39.2%	52.6%	47.5%	40.4%
0646611	Pathways Academy of Tech & Design	53.2%	42.9%	46.5%	62.5%	35.0%	64.3%
0646711	Univ. HS of Science and Engineering	34.5%	*	32.9%	*	28.6%	45.5%
0646911	Capital Preparatory Magnet School	*	*	37.0%	*	*	*
0647111	Bulkeley High School	*	*	*	*	4.0%	*
0647211	HPHS Engineering/Green Tech Acad	*	*	*	*	15.6%	*
0647411	HPHS Law and Government Academy	*	*	9.8%	*	*	*
0647511	HPHS Nursing/Health Sciences Acad	*	*	10.2%	*	*	*
0647711	Journalism/Media Academy Magnet	*	*	*	*	*	*
0696111	Killingly High School	*	*	*	*	8.4%	*
0716211	Lyman Memorial High School	35.5%	46.5%	39.5%	37.9%	44.4%	28.8%
0726111	Ledyard High School	38.6%	56.0%	37.7%	46.3%	40.4%	38.5%
0746111	Litchfield High School	26.4%	42.9%	23.0%	*	27.5%	*
0766111	Daniel Hand High School	14.7%	31.0%	13.0%	25.0%	18.1%	22.0%
0776111	Manchester High School	46.0%	47.0%	47.6%	55.2%	46.0%	52.5%
0806111	Francis T. Maloney High School	37.2%	61.6%	37.7%	52.6%	46.2%	59.8%
0806211	Orville H. Platt High School	37.2%	69.1%	40.8%	61.8%	37.2%	66.7%
0836211	Middletown High School	41.7%	53.3%	45.5%	53.6%	35.6%	63.4%
0846211	Jonathan Law High School	34.2%	55.7%	34.2%	45.6%	33.3%	51.3%
0846311	Joseph A. Foran High School	40.0%	47.1%	35.4%	51.7%	37.0%	51.7%
0856111	Masuk High School	30.3%	42.2%	27.1%	36.7%	27.2%	23.9%
0866111	Montville High School	50.8%	38.6%	42.8%	37.8%	42.0%	51.9%
0886111	Naugatuck High School	40.7%	48.1%	47.3%	52.7%	50.3%	48.8%
0896111	New Britain High School	44.4%	68.0%	50.2%	61.6%	49.7%	55.5%
0906111	New Canaan High School	9.0%	30.8%	10.1%	32.3%	10.8%	17.1%
0916111	New Fairfield High School	33.5%	41.9%	33.8%	33.8%	32.6%	17.1%
0936011	Metropolitan Business Academy	48.3%	*	40.6%	*	54.1%	90.0%
0936111	Wilbur Cross High School	30.5%	74.5%	36.8%	78.3%	38.3%	74.6%
0936211	James Hillhouse High School	37.7%	70.2%	50.8%	71.4%	42.4%	79.1%
0936311	Hill Regional Career High School	35.9%	60.0%	44.0%	68.2%	43.6%	68.9%
0936411	Cooperative High School	37.1%	86.1%	34.0%	56.3%	48.4%	65.0%
0936611	High School In The Community	33.3%	72.7%	54.5%	66.7%	44.4%	75.0%

Table 7: Remediation by School at Connecticut State University System and Community Colleges

School ID	School	Graduating Class of 2010		Graduating Class of 2011		Graduating Class of 2012	
		Percent Enrolled in 16 Months	†Percent Enrolled in Remediation	Percent Enrolled in 16 Months	†Percent Enrolled in Remediation	Percent Enrolled in 16 Months	†Percent Enrolled in Remediation
0936711	Sound School	33.3%	*	27.3%	*	52.5%	81.0%
0936811	Creed Health/Sport Sciences HS	36.1%	*	33.3%	*	38.1%	*
0937011	New Haven Academy	38.9%	*	40.0%	70.0%	57.6%	*
0946111	Newington High School	45.0%	46.1%	48.4%	39.5%	47.1%	35.5%
0956111	New London High School	36.2%	70.9%	43.5%	59.7%	48.2%	47.5%
0966111	New Milford High School	38.4%	24.5%	33.5%	16.8%	41.8%	18.9%
0976111	Newtown High School	25.2%	39.0%	27.6%	28.2%	21.9%	27.6%
0996111	North Branford High School	38.1%	50.0%	41.7%	43.6%	39.1%	44.1%
1016111	North Haven High School	36.5%	53.7%	44.4%	49.2%	38.1%	42.7%
1026111	Wheeler High School	30.8%	*	34.4%	33.3%	29.2%	*
1036111	Norwalk High School	43.4%	57.7%	45.4%	64.1%	45.6%	52.6%
1036211	Brien McMahon High School	44.2%	64.4%	46.7%	63.3%	43.5%	55.6%
1036311	Norwalk Pathways Academy at Briggs	37.1%	*	*	*	*	*
1066111	Old Saybrook Senior High School	30.3%	30.6%	24.8%	*	22.5%	*
1086011	Oxford High School	21.4%	37.5%	38.3%	31.6%	40.6%	41.1%
1096111	Plainfield High School	47.0%	51.6%	38.8%	48.1%	41.6%	51.9%
1106111	Plainville High School	51.2%	55.8%	48.8%	48.0%	48.7%	38.9%
1116111	Terryville High School	35.5%	65.9%	40.8%	47.2%	39.7%	46.0%
1136111	Portland High School	38.6%	35.3%	39.5%	46.9%	38.8%	36.4%
1166111	Putnam High School	50.0%	46.2%	32.3%	45.0%	36.7%	59.1%
1186111	Ridgefield High School	12.4%	15.1%	12.8%	22.2%	12.7%	21.8%
1196111	Rocky Hill High School	40.8%	48.3%	45.2%	42.7%	44.6%	44.8%
1246111	Seymour High School	36.4%	50.7%	41.3%	39.4%	52.1%	65.8%
1266111	Shelton High School	32.0%	46.0%	32.6%	42.4%	35.0%	44.1%
1286111	Simsbury High School	17.5%	28.6%	19.1%	22.7%	18.2%	16.7%
1296111	Somers High School	38.9%	45.1%	37.0%	23.5%	29.2%	30.0%
1316211	Southington High School	42.5%	43.3%	44.6%	44.2%	44.4%	35.9%
1326211	South Windsor High School	44.1%	25.6%	41.7%	29.1%	38.8%	26.8%
1346111	Stafford High School	46.4%	33.3%	47.8%	31.5%	31.7%	26.7%
1356111	Stamford High School	42.4%	66.3%	43.7%	63.0%	40.6%	68.1%
1356311	Westhill High School	34.5%	59.4%	41.1%	66.1%	40.8%	65.5%
1356411	The Academy of Information Tech	42.3%	56.4%	52.2%	54.3%	44.8%	43.8%
1376111	Stonington High School	27.6%	51.0%	24.5%	20.8%	18.0%	38.7%
1386111	Stratford High School	39.9%	54.7%	52.3%	61.6%	43.3%	58.7%
1386211	Bunnell High School	39.2%	49.2%	45.4%	44.8%	45.6%	46.6%
1396111	Suffield High School	32.0%	41.5%	32.7%	31.3%	26.7%	45.1%
1406211	Thomaston High School	41.1%	41.0%	51.0%	54.0%	48.2%	50.0%
1416111	Tourtellotte Memorial High School	36.3%	54.5%	27.1%	47.8%	39.8%	37.1%
1426111	Tolland High School	34.2%	29.5%	37.7%	28.9%	40.4%	33.0%

Table 7: Remediation by School at Connecticut State University System and Community Colleges

School ID	School	Graduating Class of 2010		Graduating Class of 2011		Graduating Class of 2012	
		Percent Enrolled in 16 Months	†Percent Enrolled in Remediation	Percent Enrolled in 16 Months	†Percent Enrolled in Remediation	Percent Enrolled in 16 Months	†Percent Enrolled in Remediation
1436111	Torrington High School	35.3%	50.0%	39.0%	40.2%	34.3%	56.5%
1446111	Trumbull High School	28.4%	37.2%	30.3%	29.1%	24.8%	27.3%
1466111	Rockville High School	39.8%	43.9%	39.9%	32.0%	47.3%	40.2%
1486111	Lyman Hall High School	31.5%	56.3%	40.4%	54.1%	48.7%	42.0%
1486211	Mark T. Sheehan High School	32.7%	42.5%	44.7%	35.6%	45.1%	32.1%
1516011	Waterbury Arts Magnet Schl (High)	46.3%	72.0%	52.6%	61.7%	62.1%	50.0%
1516211	Crosby High School	42.4%	68.0%	44.3%	68.6%	43.8%	76.8%
1516311	Wilby High School	35.4%	74.4%	41.0%	64.6%	39.0%	81.3%
1516411	John F. Kennedy High School	36.9%	64.1%	46.7%	71.1%	43.3%	62.4%
1526111	Waterford High School	36.7%	48.1%	37.1%	44.1%	35.6%	26.6%
1536111	Watertown High School	44.9%	60.8%	42.0%	36.1%	44.7%	45.9%
1546111	Westbrook High School	27.0%	*	36.1%	*	34.7%	46.2%
1556111	Conard High School	31.8%	46.0%	31.6%	39.8%	34.4%	45.6%
1556211	Hall High School	27.1%	49.1%	27.9%	44.0%	26.8%	36.9%
1566111	West Haven High School	41.6%	66.4%	38.6%	60.9%	46.5%	65.2%
1576111	Weston High School	9.2%	*	8.9%	*	10.6%	*
1586111	Staples High School	8.3%	48.5%	9.3%	*	11.9%	*
1596111	Wethersfield High School	39.5%	37.8%	37.0%	43.0%	39.3%	38.7%
1616111	Wilton High School	15.9%	*	14.2%	20.9%	10.9%	*
1636111	Windham High School	47.2%	55.9%	40.4%	50.0%	46.4%	57.1%
1646111	Windsor High School	43.1%	50.0%	41.8%	53.8%	42.6%	45.2%
1656111	Windsor Locks High School	41.8%	44.6%	33.9%	52.5%	34.1%	50.0%
1666111	Wolcott High School	50.7%	46.6%	42.6%	48.9%	48.3%	39.2%
2016112	Housatonic Valley Regional High Schl	32.0%	62.5%	16.4%	*	18.8%	*
2046112	Valley Regional High School	25.9%	36.1%	18.0%	44.4%	23.3%	25.7%
2056112	Amity Regional High School	21.2%	29.8%	24.7%	31.6%	29.4%	36.3%
2066112	Wamogo Regional High School	26.9%	47.6%	40.7%	40.5%	32.1%	40.7%
2076112	Northwestern Regional High School	34.7%	39.3%	41.0%	40.0%	35.8%	42.9%
2086112	RHAM High School	39.3%	26.2%	43.2%	22.2%	40.1%	22.3%
2096112	Joel Barlow High School	11.7%	37.0%	13.2%	*	19.2%	*
2106112	Lewis S. Mills High School	34.4%	44.8%	33.5%	41.4%	39.9%	42.7%
2116112	Parish Hill High School	45.7%	*	46.4%	*	45.2%	*
2126112	Shepaug Valley High School	24.0%	*	23.5%	*	26.6%	*
2136112	Coginchaug Regional High School	42.1%	31.1%	36.9%	45.8%	39.6%	34.5%
2146112	Nonnewaug High School	26.0%	42.3%	31.0%	43.1%	27.7%	41.5%
2156212	Pomperaug Regional High School	34.5%	36.4%	29.4%	32.4%	30.4%	27.8%
2166012	Woodland Regional High School	45.2%	48.3%	50.6%	41.1%	41.1%	47.4%
2176112	Haddam-Killingworth High School	42.9%	34.8%	36.7%	32.3%	32.8%	32.2%
2186112	Lyme-Old Lyme High School	16.3%	*	20.6%	40.7%	20.8%	*

Table 7: Remediation by School at Connecticut State University System and Community Colleges

School ID	School	Graduating Class of 2010		Graduating Class of 2011		Graduating Class of 2012	
		Percent Enrolled in 16 Months	†Percent Enrolled in Remediation	Percent Enrolled in 16 Months	†Percent Enrolled in Remediation	Percent Enrolled in 16 Months	†Percent Enrolled in Remediation
2196112	E. O. Smith High School	31.5%	27.1%	28.9%	27.8%	36.5%	23.0%
2415114	Academy of Aerospace/Engineering	*	*	*	*	*	*
2416114	Metro Learn Center Global Studies	34.1%	48.3%	41.1%	41.0%	51.4%	48.6%
2416314	Great Path Academy at MCC	*	*	*	*	10.8%	*
2536014	Arts Capitol Theater Magnet School	*	*	*	*	37.5%	*
2536114	Quinebaug Middle College	*	*	*	*	37.8%	*
2686113	Common Ground High School	41.4%	*	43.2%	*	43.3%	*
2696113	The Bridge Academy	29.0%	*	37.9%	*	33.3%	*
2726113	Explorations	34.5%	*	*	*	*	*
2826013	Stamford Academy	*	*	*	*	30.0%	*
9001116	Bullard-Havens Technical High Schl	41.2%	82.8%	44.8%	57.3%	45.6%	80.9%
9001216	Henry Abbott Technical High School	38.1%	75.5%	43.7%	57.6%	35.0%	61.8%
9001316	H. H. Ellis Technical High School	24.6%	67.7%	27.8%	53.1%	24.6%	67.7%
9001416	Eli Whitney Technical High School	34.5%	82.8%	38.0%	81.6%	40.9%	83.0%
9001516	A. I. Prince Technical High School	44.0%	78.0%	44.3%	87.1%	42.9%	79.1%
9001616	Howell Cheney Technical High School	33.9%	39.5%	31.6%	38.1%	29.3%	65.9%
9001716	H. C. Wilcox Technical High School	34.6%	70.4%	31.6%	64.3%	41.5%	66.3%
9001816	Vinal Technical High School	26.6%	54.5%	19.2%	66.7%	25.6%	65.6%
9001916	E. C. Goodwin Technical High School	38.6%	90.6%	31.0%	83.9%	35.5%	72.1%
9002016	Norwich Technical High School	38.3%	69.4%	34.5%	50.0%	24.3%	52.8%
9002216	Oliver Wolcott Technical High School	31.1%	52.6%	35.4%	60.3%	29.4%	55.3%
9002316	W. F. Kaynor Technical High School	33.9%	62.5%	39.0%	66.7%	48.3%	66.3%
9002416	Windham Technical High School	38.7%	60.5%	34.2%	56.1%	44.8%	50.0%
9002516	Emmett O'Brien Tech High School	21.3%	65.2%	37.2%	71.4%	33.8%	72.7%
9002616	Platt Technical High School	29.3%	59.0%	27.7%	69.8%	41.5%	54.5%
9002716	Ella T. Grasso Southeastern Tech HS	41.7%	80.0%	31.7%	71.1%	26.0%	65.8%
9016122	Norwich Free Academy	44.8%	50.8%	43.7%	49.6%	42.2%	40.9%
9026122	The Gilbert School	47.7%	62.7%	35.6%	66.7%	38.1%	62.5%
9036122	Woodstock Academy	43.5%	41.0%	40.8%	44.3%	42.2%	36.2%

Source: P20WIN data and SDE calculations

* Data suppressed to protect confidentiality

† This column is a subset of the column immediately preceding it.

Appendix C: Methods

Explanation of Differences between 2018 and Prior P20WIN Analyses

Two important changes were made to the methodology in these analyses from the previous reports. First, no records from a term in which the start-of-term date preceded the graduation date were included. Primarily, this removed records from students who had engaged in a dual-enrollment program during high school. This had a negative effect on the percentage of students who had enrolled within 16 months of graduation, but a positive effect on the percentage of students who had completed a year's worth of credits within two years.

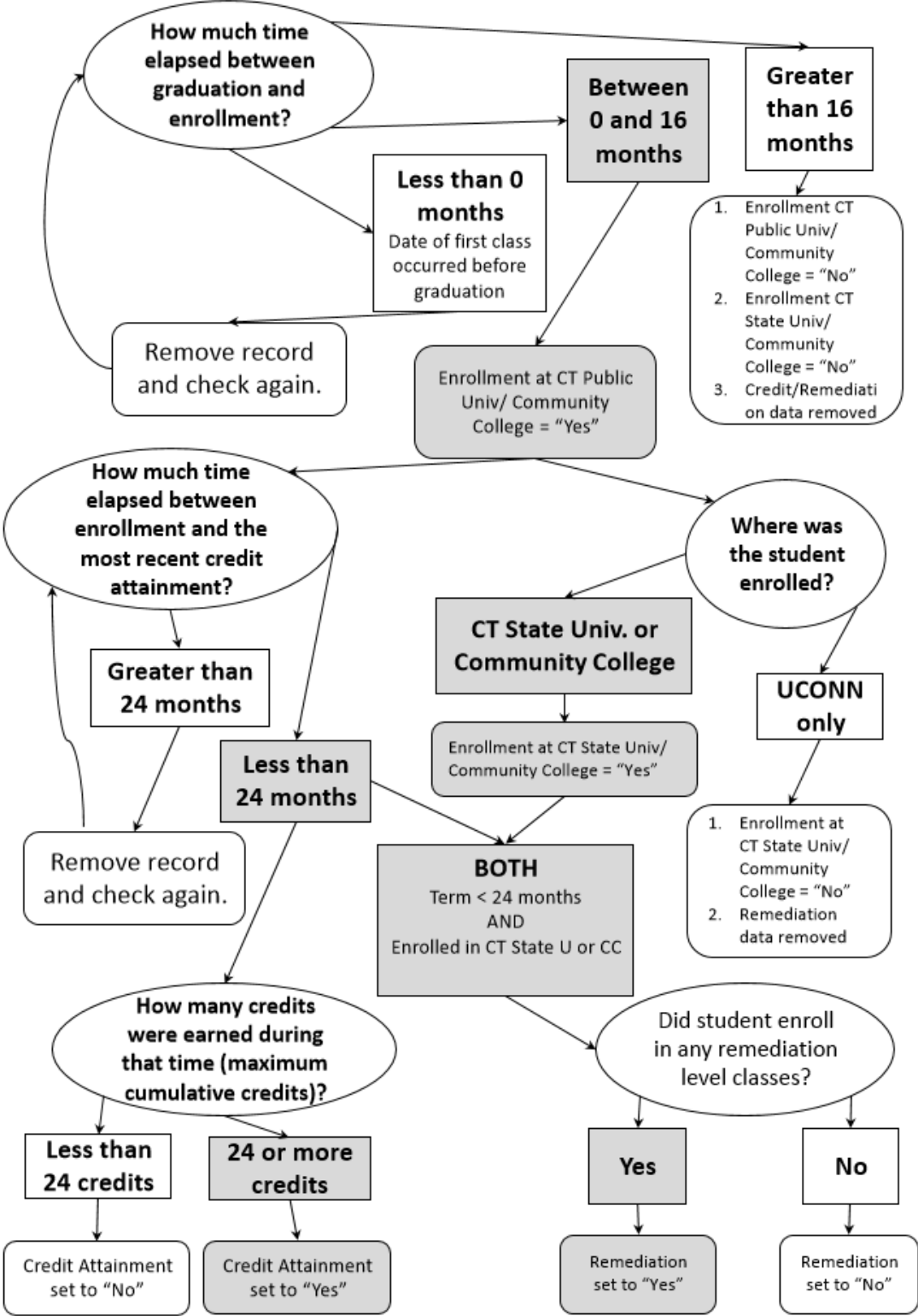
The second methodology change was with respect to students who had transferred between colleges/universities during the two years after first enrollment. For the prior reports, a student's first enrollment was considered, and any credits earned at a later institution were removed. For this report, the student records were combined, allowing students who earned 24 or more credits between several institutions to count toward the credit attainment statistic.

Additionally, this year, CSCU was able to share more accurate and complete data about remedial education that includes remedial courses taken at the transitional, intensive, and embedded levels as required by PA 12-40. Prior data matches were done with data collected before or during the time when the new policy on remedial education was being implemented.

Explanation of Programming Logic for Term/Student-level Records: (see Figure 1 on next page):

- Var1:** All students enrolled in a CPUCC within 16 months of graduation.
 - If earliest start-of-term date before graduation (i.e., a dual-enrollment student), term record discarded before repeating this step.
 - If earliest start-of-term date more than 16 months after graduation:
 - Student-level enrollment at CPUCC = "No" (*Var1=0*)
 - Student-level enrollment at CSCU = "No" (*Var3=0*)
 - Student-level credit and remediation data removed (*Var2, Var4 = missing*)
 - If the earliest start-of-term date within 16 months after graduation:
 - Student-level enrollment at CPUCC = "Yes" (*Var1=1*)
- Var2:** Out of those students where enrollment at CPUCC = "Yes" (*Var1=1*), all students with 24 or more credits within two years of enrollment.
 - For each term record, time between credit attainment date and enrollment date calculated. If more than two years, term record discarded.
 - Calculated the maximum number of cumulative credits for each student:
 - If 24 or more credits, student-level credit attainment = "Yes" (*Var2=1*)
 - Otherwise, student-level credit attainment = "No" (*Var2=0*)
- Var3:** Out of those students where enrollment at CPUCC = "Yes" (*Var1=1*), regardless of credit attainment, all students enrolled in a CSCU within 16 months of graduation.
 - If UCONN only:
 - Student-level enrollment at CSCU = "No" (*Var3=0*)
 - Student-level remediation data removed (*Var4 = missing*)
 - If a student attended a CSCU, enrollment at CSCU was set to "Yes" (*Var3=1*)
- Var4:** Out of those students where enrollment at CSCU = "Yes" (*Var1=1*), regardless of credit attainment, all students with at least one remedial class within two years
 - If remediation occurred, student-level remediation = "Yes" (*Var4=1*).
 - Otherwise, student-level remediation = "No" (*Var4=0*).

Visual Representation of Programming Logic



Calculation of School/District-level records:

1. The school/district percentage of students enrolled at a CPUCC within 16 months of graduation is the number of students within each school/district with a “Yes” for enrollment at a CPUCC divided by the total number of students within the school/district then multiplied by 100%.

$$\frac{\text{sum of Var1}}{\text{count of graduates in each school/district}} * 100\%$$

2. The school/district percentage of students who completed one year’s worth of credit within two years of enrollment is the number of students within each school/district with a “Yes” for credit attainment divided by the number of students within each school/district with a “Yes” for enrollment at a CPUCC then multiplied by 100%.

$$\frac{\text{sum of Var2}}{\text{sum of Var1}} * 100\%$$

3. The school/district percentage of students enrolled at a CSCU within 16 months of graduation is the number of students within each school/district with a “Yes” for enrollment at a CSCU divided by the total number of students within the school/district then multiplied by 100%.

$$\frac{\text{sum of Var3}}{\text{count of graduates in each school/district}} * 100\%$$

4. The school/district percentage of students enrolled in a remedial course is the number of students within each school/district with a “Yes” for remediation divided by the number of students within each school/district with a “Yes” for enrollment at a CSCU then multiplied by 100%.

$$\frac{\text{sum of Var4}}{\text{sum of Var3}} * 100\%$$

For information about data suppression rules used in this analysis, please visit:

edsight.ct.gov/relatedreports/BDCRE%20Data%20Suppression%20Rules.pdf