

CONNECTICUT STATE BOARD OF EDUCATION**Hartford**

TO: State Board of Education

FROM: Dr. Miguel A. Cardona, Commissioner of Education

DATE: March 4, 2020

SUBJECT: College Enrollment, Credit Attainment and Remediation of High School Graduates (P20WIN Report)

Executive Summary

Please find attached the report entitled Trends in Enrollment, Credit Attainment, and Remediation at Connecticut Public Universities and Community Colleges: Results from P20WIN for the High School Graduating Classes of 2010 through 2014. The report answers three questions:

1. Enrollment: What percentage of the graduating class enrolled in a Connecticut public university or community college (UCONN, the four Connecticut State Universities, and 12 Connecticut community colleges) within 16 months of graduation?
2. Credit Attainment: What percentage of those who enrolled in a Connecticut public university or community college within 16 months of graduation earned at least one year's worth of credits (24 or more) within two years of enrollment?
3. Remediation: What percentage of those who enrolled in one of the four Connecticut State Universities or one of the 12 community colleges within 16 months of graduation took a remedial course within two years of enrollment?

The overall results indicate the following:

- Of the approximately 39,000 students in each graduating class, around 40 percent enrolled in a Connecticut public university or community college within 16 months of graduation. There is a slight increase across the graduating classes, from 39.3 percent in 2010 to 40.9 percent in 2014.
- Of those who enroll, around two-thirds earn 24 credits within two years of enrollment. There is a slight increase across the graduating classes from 64.4 percent in 2010 to 66.0 percent in 2014.
- Of the approximately 13,500 students from the graduating class of 2014 who enrolled in one of the four Connecticut State Universities or a Connecticut community college within 16 months of graduation, just over 43% took a remedial course within the first two years of enrollment; this is down from nearly 50 percent five years ago.

When disaggregating the data by student groups, some of the following were observed:

- Across all graduating classes, female students were both more likely to enroll in a Connecticut public university or a Connecticut community college within 16 months of graduation than their male student peers and more likely to earn 24 or more credits within two years of enrollment.
- Students reported as African American or Hispanic were less likely to have earned 24 or more credits in two years than their white student peers, with Asian students having the highest credit attainment rates.
- English Learners, students with disabilities, and those from low income families were less likely than their peers to have earned a full year's worth of credit within two years of enrollment.
- The percentage of students participating in remedial coursework is declining for almost all student groups.

The decline in students taking remedial coursework is a promising trend, especially considering the significant policy initiatives that were implemented in the early part of the decade including:

- the adoption of the Common Core State Standards by the State Board of Education in July 2010;
- the passage of [Public Act 12-40](#) which directed public community colleges and state universities to reconfigure how remedial/developmental education is delivered; and
- greater pre-college, dual enrollment opportunities for high school students.

The report is being shared with CSDE staff, district and school leaders, and higher education staff to inform strategies that prepare all students for education after high school.

Prepared by: _____
Danielle Bousquet, Education Consultant

Prepared by: _____
Dr. Charles Martie, Education Consultant

Approved by: _____
Ajit Gopalakrishnan, Chief Performance Officer

Trends in Enrollment, Credit Attainment, and Remediation at Connecticut Public Universities and Community Colleges:

Results from P20WIN for
the High School Graduating Classes of
2010 through 2014



P20•WIN

Connecticut's Preschool–20 and
Workforce Information Network

www.ct.edu/p20win

Table of Contents

Executive Summary.....	2
Appendix A: Graphs	5
Graphs 1-2: Enrollment in a CT Public University or Community College	6
Graphs 3-4: Credit Attainment in a CT Public University or Community College	7
Graphs 5-6: Remediation in a CT State University or Community College	8
Appendix B: Results Tables	9
Table 1: Statewide Demographics by Graduating Class.....	10
Table 2: Credit Attainment by Student Group at CT Public Universities and Community Colleges ...	11
Table 3: Remediation by Student Group at CT State University System and Community Colleges ...	12
Table 4: Credit Attainment by District at CT Public Universities and Community Colleges	13
Table 5: Remediation by District at CT State University System and Community Colleges	20
Table 6: Credit Attainment by School at CT Public Universities and Community Colleges	26
Table 7: Remediation by School at CT State University System and Community Colleges	35
Table 8: Enrollment in CT Private Colleges and Universities	44
Appendix C: Methods.....	45

Trends in Enrollment, Credit Attainment, and Remediation at Connecticut Public Universities and Community Colleges:

Results from P20WIN for the High School Graduating Classes of 2010 through 2014

Executive Summary

During the summer of 2014, three Connecticut state agencies – the Connecticut State Department of Education (CSDE), the Board of Regents for Higher Education, and the Department of Labor – successfully completed a pilot project and established the Preschool through 20 and Workforce Information Network (P20WIN). In 2015, the University of Connecticut (UConn) joined the effort, adding significantly to the scope of the data and analysis. P20WIN is an unprecedented interagency network that securely links data to gain new insights that can help improve the policies and procedures that affect individuals and students these agencies serve.

These analyses examine:

- **Enrollment:** What percentage of the graduating class (or student group of the graduating class) enrolled in a Connecticut public university or community college (UConn, the four Connecticut State Universities, and all Connecticut community colleges) within 16 months of graduation?
- **Credit Attainment:** What percentage of those who enrolled in a Connecticut public university or community college within 16 months of graduation (or student group thereof) earned at least one year's worth of credits (24 or more) within two years of enrollment?
- **Remediation:** What percentage of those who enrolled in either a Connecticut State University or community college within 16 months of graduation (or student group thereof) took a remedial course within two years of enrollment?
 - UConn does not collect data on remediation, and is thus not included in the remediation analysis. The enrollment percentage of the graduating class without UConn is provided for comparison.

The results contained herein examine the trends in enrollment, credit attainment, and remediation in Connecticut's public universities and community colleges from 2010 to 2014.

The complete results are provided in six graphs (see Appendix A) and eight tables (see Appendix B):

- Graphs 1 and 2: Enrollment at CT Public Universities and Community Colleges
- Graphs 3 and 4: Credit Attainment at CT Public Universities and Community Colleges
- Graphs 5 and 6: Remediation at CT State Universities and Community Colleges
- Table 1: Statewide Demographics by Graduating Class (provided for comparison)
- Table 2: Statewide Credit Attainment Results by Demographic Student Group
- Table 3: Statewide Remediation Results by Demographic Student Group
- Table 4: Credit Attainment Results by District
- Table 5: Remediation Results by District
- Table 6: Credit Attainment Results by School
- Table 7: Remediation Results by School
- Table 8: Enrollment in CT Private Colleges and Universities

Statewide Trends in Enrollment and Credit Attainment *(See Graphs 1-4 and Table 2)*

Of the approximately 39,000 students in each graduating classes (GC), around 40% enrolled in a Connecticut public university or a community college (CPUCC) within 16 months of high school graduation. CPUCC includes UCONN, the four Connecticut State Universities, and the Connecticut community colleges. The overall percentage of students has remained largely consistent across the graduating classes in this analysis; there is a slight increase from 39.3% in 2010 to 40.9% in 2014 with a peak of 41.9% in 2013. Across all graduating classes, female students were not only more likely to enroll in a CPUCC within 16 months of graduation than their male student peers (e.g., Graduating Class 2013: Female: 43.6%, Male: 40.3%), female students were also more likely to earn 24 or more credits within two years of enrollment (e.g., Graduating Class 2013: Female: 70.1%, Male: 63.7%). While the enrollment and credit attainment for male students has remained largely constant, female students have experienced increases in both enrollment (2010-2014: Female: 39.6%-42.2%, Male: 39.0%-39.6%) and credit attainment (2010-2014: Female: 66.7-69.0%, Male: 62.0%-62.7%) across the five graduating classes.

While African American, Asian, and Hispanic students were more likely to enroll in CPUCCs than their white student peers (e.g., Graduating Class 2013: African American: 45.3%, Asian: 50.9%, Hispanic: 46.7%, White: 39.6%), students reported as African American or Hispanic were less likely to have earned 24 or more credits in two years than their white students peers, with Asian students having the highest credit attainment rates (e.g., Graduating Class 2013: African American: 50.1%, Asian: 80.9%, Hispanic: 54.5%, White: 72.9%). Almost all student groups experienced increases across the graduating classes in both CPUCC enrollment, while white student enrollment remained nearly constant, (2010-2014, African American: 38.4%-45.6%, Asian: 49.9%-51.8%, Hispanic: 41.6%-45.3%, White: 38.5%-38.3%). All groups showed increases in credit attainment across the five classes (2010-2014, African American: 49.8%-51.1%, Asian: 79.8%-80.5%, Hispanic: 52.8%-54.5%, White: 68.3%-71.6%).

English Learners were slightly less likely to have enrolled in a CPUCC within 16 months of graduation than their peers across all five classes (e.g., Graduating Class 2013: EL: 39.3%, Not EL: 42.0%). Across all five classes, English Learners were less likely than their peers to have earned a full year's worth of credit within two years of enrollment (e.g., Graduating Class 2013: EL: 43.2%, Not EL: 67.6%). While the percentage of English Learners enrolling in a CPUCC increased across the first four classes (2010-2013), the 2014 Graduating Class enrollment percentage is the lowest of all five. (2010-2014: 36.3%-36.0%). The percentage of English Learners earning a year's credit in their first two years decreased across the five classes (2010-2014: 52.0%-42.4%).

Students with disabilities (SWD) were less likely to have enrolled in a CPUCC within 16 months of graduation than their peers across all five classes (e.g., Graduating Class 2013: SWD: 32.3%, Not SWD: 42.9%). Across all three classes, students with disabilities were less likely than their peers to have earned a full year's worth of credit within two years of enrollment (e.g., Graduating Class 2013: SWD: 38.0%, Not SWD: 69.2%). The percentage of students with disabilities enrolling in a CPUCC held nearly constant across the classes (GC10-GC12: 30.3%-30.5%), as did the percentage of students earning a year's credit within the first two years (2010-2014: 37.0%-37.7%). The graduating class of 2013 had the highest enrollment (32.3%) and the graduating class of 2012 had the highest credit attainment (39.0%).

Students who were eligible for free- or reduced- price meals (FRPM) were more likely to have enrolled in a CPUCC within 16 months of graduation than their peers across the last four classes (e.g., Graduating

Class 2013: FRPM: 42.5%, Not FRPM: 40.2%). Across all five classes, students eligible for FRPM were less likely than their peers to have earned a full year's worth of credit within two years of enrollment (e.g., Graduating Class 2013: FRPM: 54.0%, Not FRPM: 72.2%). The percentage of students eligible for FRPM enrolling in a CPUCC increased across the classes (2010-2014: 39.0%-43.8%), as did the percentage of students earning a year's credit (GC10-GC12: 52.1%-53.2%), however the graduating class of 2013 had the highest enrollment (44.8%) and the graduating class of 2012 had the highest credit attainment (54.6%).

Statewide Trends in Remediation *(See Graphs 5-6 and Table 3)*

Of the approximately 13,500 students from the graduating class of 2014 who enrolled in one of the four Connecticut State Universities or a Connecticut community college (CSCU) within 16 months of graduation, just over 43% took a remedial course within the first two years of enrollment; this is down from nearly 50 percent five years ago (State Average, GC10: 49.8%, GC13: 45.7%, GC14: 43.4%). Female students took slightly more remedial courses than their male student peers (e.g., Graduating Class 2013: Female: 47.1%, Male: 44.2%), although there is great variability in the size of this difference across the five classes. Both male and female students showed declines in the percentage of students taking remedial courses across the five classes (2010-2014, Female: 51.1%-43.8%, Male: 48.5%-43.0%).

English Learners, students with disabilities, and students eligible for free- or reduced-price meals all had significantly higher percentages of students taking remedial classes (e.g., Graduating Class of 2013: EL: 72.8%, SWD: 75.7%, FRPM: 63.4%) than their peers (e.g., Graduating Class of 2013: Not EL: 45.0%, Not SWD: 43.1%, Not FRPM: 37.5%). Students with disabilities and students eligible for FRPM both had fewer students taking remedial courses across the graduating classes (2010-2014: SWD: 77.7%-70.2%, FRL: 68.2%-61.2%). Among English Learners, the trend in the percentage of those taking remedial courses was mixed; though the rate in 2014 (75.0%) was slightly lower than that in 2010 (75.8%), it increased from the 2013 rate (72.8%).

Students who were reported as African American or Hispanic and enrolled in a CSCU were also more likely to take a remedial course than their white or Asian student peers (e.g., Graduating Class of 2013, African American: 66.7%, Asian: 37.0%, Hispanic: 63.0%, White: 35.7%). All four student groups experienced an overall decline in the percentage of students taking remedial courses (2010-2014: African American: 70.1%-60.1%, Asian: 42.7%-34.4%, Hispanic: 67.5%-63.6%, White: 42.0%-33.3%) While Asian students in the 2011 graduating classes took more remedial courses than their white student peers, the proportion of students in the remaining four graduating classes who took remedial courses is comparable.

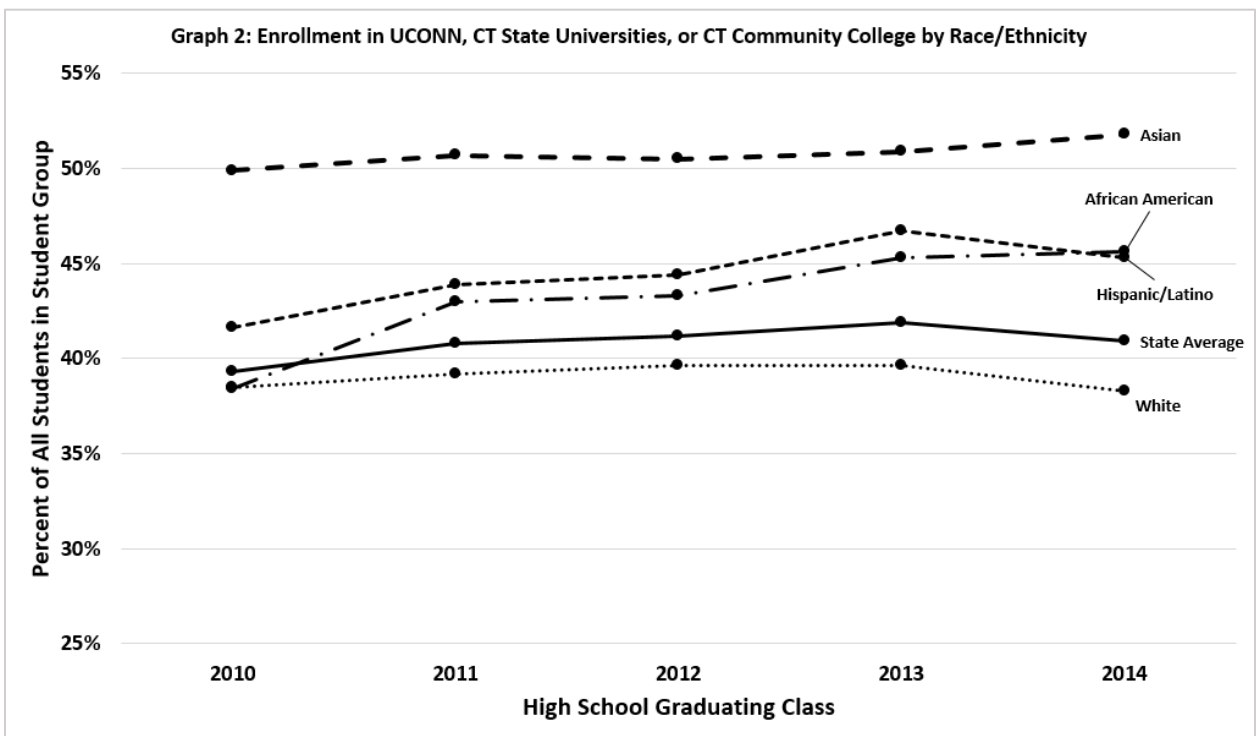
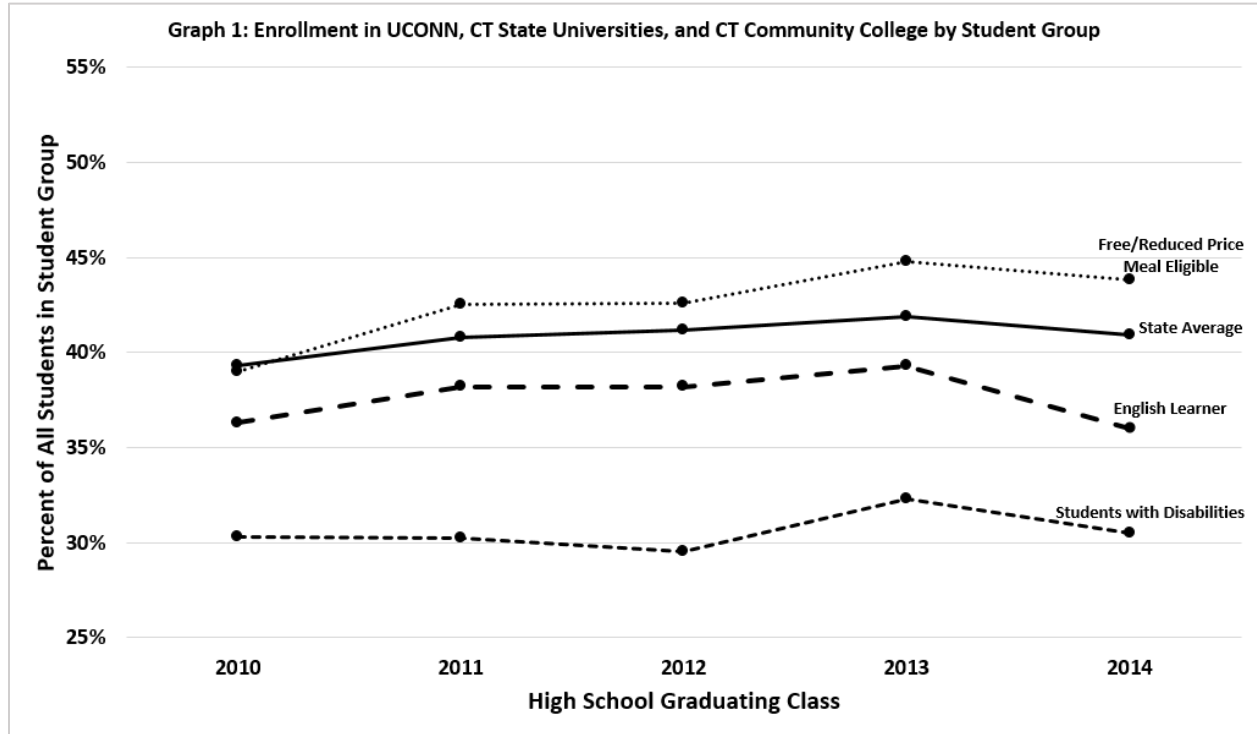
The decline in students taking remedial coursework is a promising trend, especially considering the significant policy initiatives that were implemented in the early part of the decade including:

- the adoption of the Common Core State Standards by the State Board of Education in 2010;
- the passage of [Public Act 12-40](#) which directed public community colleges and state universities to reconfigure how remedial/developmental education is delivered; and
- greater pre-college, dual enrollment opportunities for high school students.

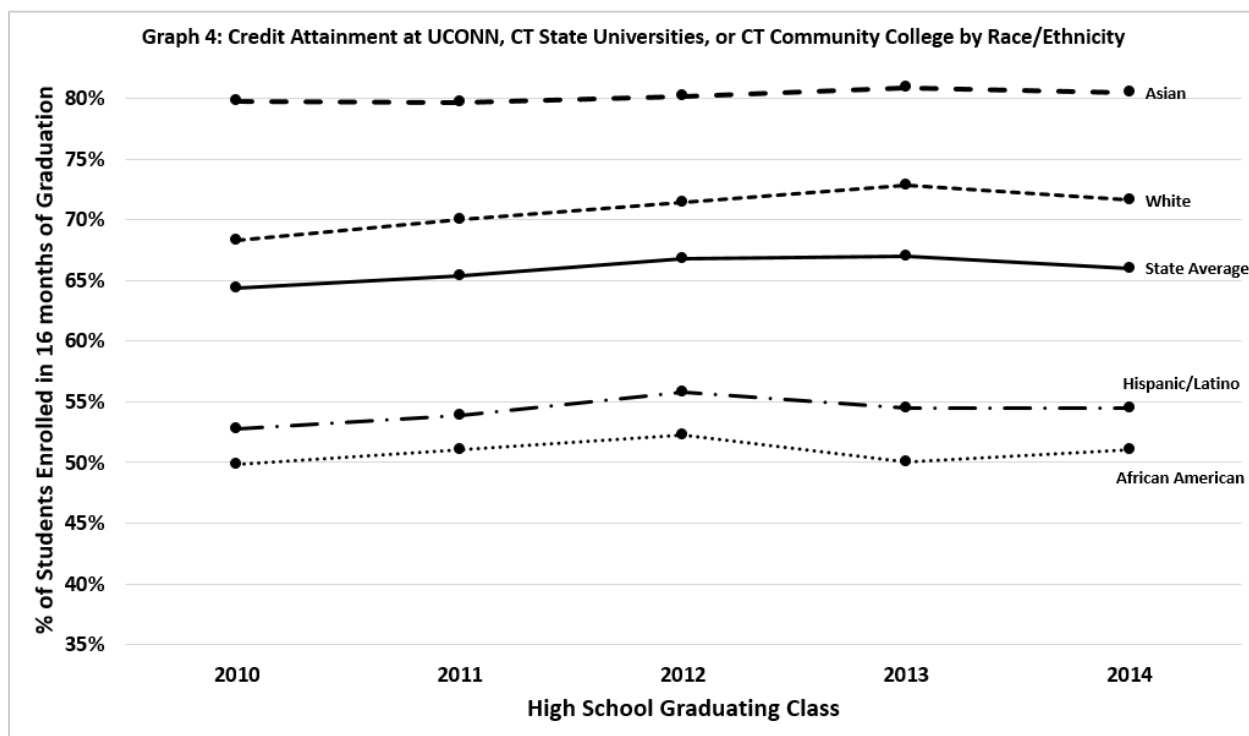
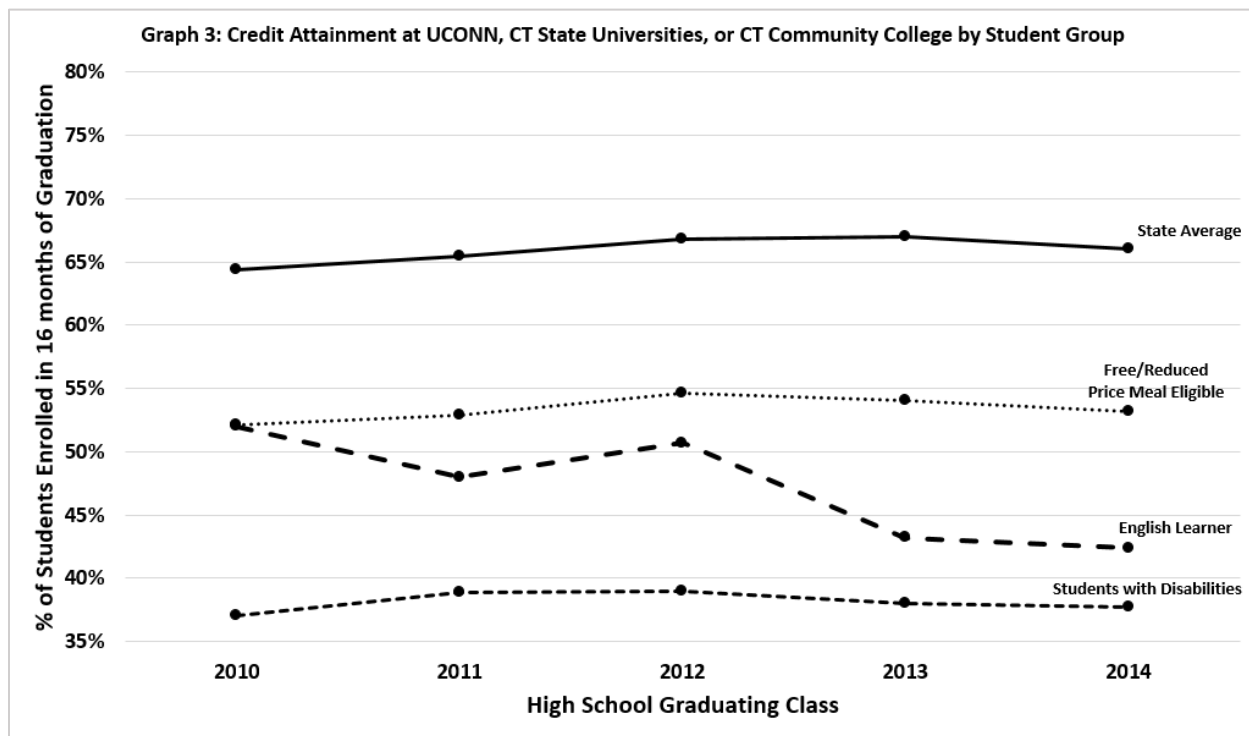
District and school data are available in Appendix B: Tables 4-7. To provide a more complete picture of postsecondary pathways taken by public high school graduates, enrollment in Connecticut's private universities/colleges for the graduating classes of 2013 and 2014 is included in Table 8.

Appendix A: Graphs

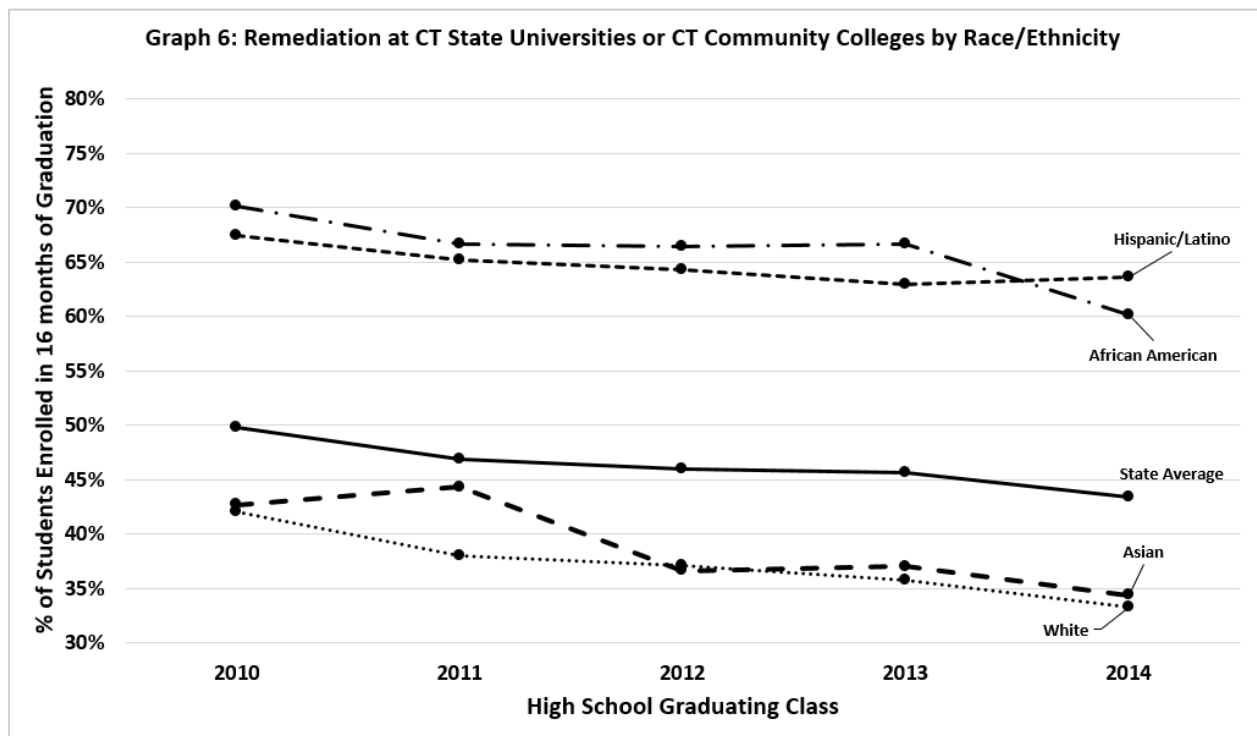
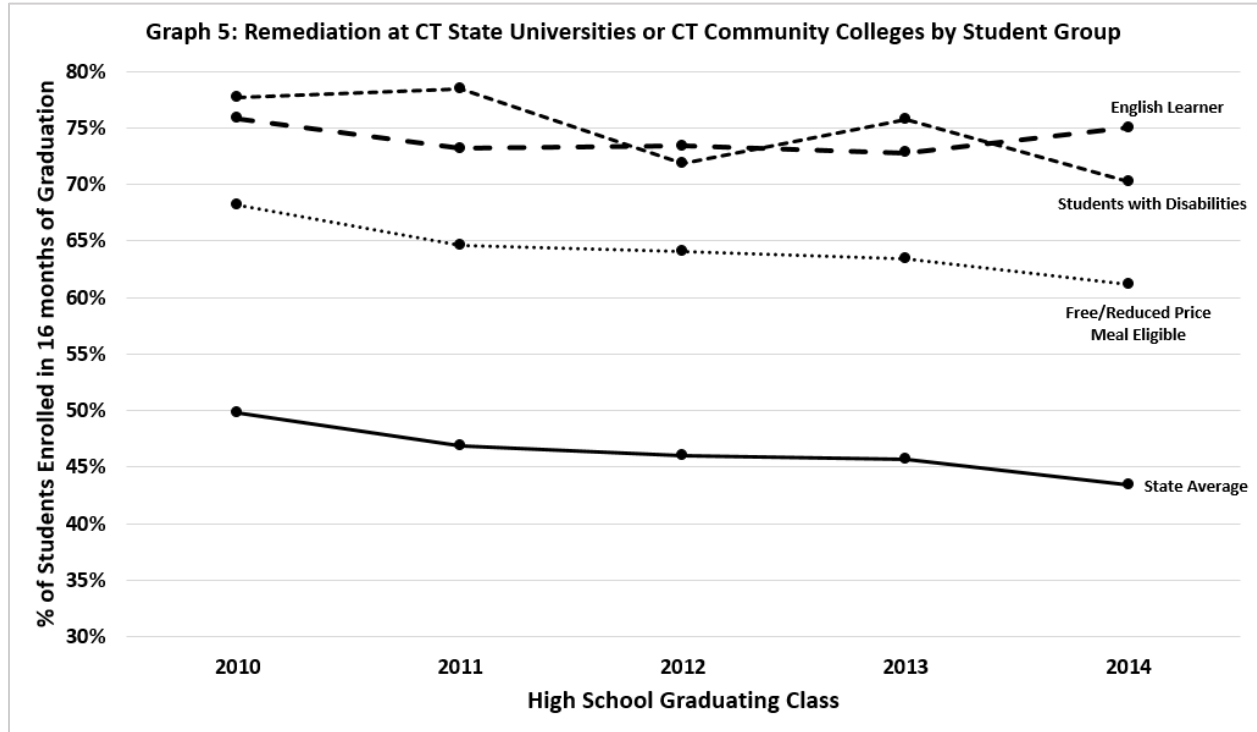
Graphs 1-2: Enrollment in a CT Public University or Community College



Graphs 3-4: Credit Attainment in a CT Public University or Community College



Graphs 5-6: Remediation in a CT State University or Community College



Appendix B: Results Tables

Table 1: Statewide Demographics by Graduating Class

Student Group	Graduating Class of 2010		Graduating Class of 2011		Graduating Class of 2012		Graduating Class of 2013		Graduating Class of 2014	
	Number of Students	Percent of Class	Number of Students	Percent of Class	Number of Students	Percent of Class	Number of Students	Percent of Class	Number of Students	Percent of Class
Gender										
Female	19,419	50.2%	19,456	50.0%	19,508	50.4%	19,340	49.8%	19,501	49.9%
Male	19,302	49.8%	19,433	50.0%	19,170	49.6%	19,466	50.2%	19,579	50.1%
Race/Ethnicity										
American Indian	122	0.3%	168	0.4%	212	0.5%	143	0.4%	121	0.3%
Asian	1,474	3.8%	1,397	3.6%	1,492	3.9%	1,643	4.2%	1,653	4.2%
Black/African American	4,960	12.8%	4,895	12.6%	4,703	12.2%	4,794	12.3%	4,894	12.5%
Hispanic/Latino	4,932	12.7%	5,306	13.6%	5,513	14.3%	5,859	15.1%	6,193	15.9%
Native Hawaiian	*	*	*	*	24	0.1%	65	0.2%	25	0.1%
Two or More Races	*	*	*	*	394	1.0%	450	1.2%	556	1.4%
White	27,157	70.1%	26,835	69.0%	26,340	68.1%	25,852	66.6%	25,638	65.6%
English Learners										
Yes	951	2.5%	936	2.4%	960	2.5%	936	2.4%	1,027	2.6%
No	37,770	97.5%	37,953	97.6%	37,718	97.5%	37,870	97.6%	38,053	97.4%
Students with Disabilities										
Yes	3,326	8.6%	3,305	8.5%	3,500	9.0%	3,430	8.8%	3,551	9.1%
No	35,395	91.4%	35,584	91.5%	35,178	91.0%	35,376	91.2%	35,529	90.9%
Free/Reduced Price Meal Eligible										
Yes	10,133	26.2%	10,934	28.1%	11,238	29.1%	10,379	26.7%	11,011	28.2%
No	28,588	73.8%	27,955	71.9%	27,440	70.9%	28,427	73.3%	28,069	71.8%
Total	38,721		38,889		38,678		38,806		39,080	

* Data suppressed to protect confidentiality

Source: P20WIN data and CSDE calculations

Table 2: Credit Attainment by Student Group at CT Public Universities and Community Colleges

Student Group	Graduating Class of 2010		Graduating Class of 2011		Graduating Class of 2012		Graduating Class of 2013		Graduating Class of 2014	
	Percent Enrolled in 16 Months	†Percent Earning 24 Credits	Percent Enrolled in 16 Months	†Percent Earning 24 Credits	Percent Enrolled in 16 Months	†Percent Earning 24 Credits	Percent Enrolled in 16 Months	†Percent Earning 24 Credits	Percent Enrolled in 16 Months	†Percent Earning 24 Credits
Gender										
Female	39.6%	66.7%	42.2%	68.5%	42.1%	69.6%	43.6%	70.1%	42.2%	69.0%
Male	39.0%	62.0%	39.4%	62.1%	40.2%	63.8%	40.3%	63.7%	39.6%	62.7%
Race/Ethnicity										
American Indian	47.5%	58.6%	41.1%	63.8%	44.3%	61.7%	42.0%	66.7%	43.0%	48.1%
Asian	49.9%	79.8%	50.7%	79.7%	50.5%	80.2%	50.9%	80.9%	51.8%	80.5%
Black/African American	38.4%	49.8%	43.0%	51.1%	43.3%	52.3%	45.3%	50.1%	45.6%	51.1%
Hispanic/Latino	41.6%	52.8%	43.9%	53.9%	44.4%	55.8%	46.7%	54.5%	45.3%	54.5%
Native Hawaiian	*	*	*	*	*	*	47.7%	74.2%	*	*
Two or More Races	*	*	*	*	*	*	41.6%	63.6%	*	*
White	38.5%	68.3%	39.2%	70.0%	39.6%	71.4%	39.6%	72.9%	38.3%	71.6%
English Learners										
Yes	36.3%	52.0%	38.2%	48.0%	38.2%	50.7%	39.3%	43.2%	36.0%	42.4%
No	39.4%	64.7%	40.8%	65.8%	41.2%	67.1%	42.0%	67.6%	41.1%	66.5%
Students with Disabilities										
Yes	30.3%	37.0%	30.2%	38.9%	29.5%	39.0%	32.3%	38.0%	30.5%	37.7%
No	40.2%	66.3%	41.7%	67.1%	42.3%	68.6%	42.9%	69.2%	42.0%	68.0%
Free/Reduced Price Meal Eligible										
Yes	39.0%	52.1%	42.5%	52.9%	42.6%	54.6%	44.8%	54.0%	43.8%	53.2%
No	39.5%	68.4%	40.2%	70.1%	40.6%	71.5%	40.9%	72.2%	39.8%	71.5%
Total	39.3%	64.4%	40.8%	65.4%	41.2%	66.8%	41.9%	67.0%	40.9%	66.0%

* Data suppressed to protect confidentiality

† This column is a subset of the column immediately preceding it.

Source: P20WIN data and CSDE calculations

Table 3: Remediation by Student Group at CT State University System and Community Colleges

Student Group	Graduating Class of 2010		Graduating Class of 2011		Graduating Class of 2012		Graduating Class of 2013		Graduating Class of 2014	
	Percent Enrolled in 16 Months	†Percent Enrolled in Remediation	Percent Enrolled in 16 Months	†Percent Enrolled in Remediation	Percent Enrolled in 16 Months	†Percent Enrolled in Remediation	Percent Enrolled in 16 Months	†Percent Enrolled in Remediation	Percent Enrolled in 16 Months	†Percent Enrolled in Remediation
Gender										
Female	33.7%	51.1%	35.9%	48.7%	35.7%	46.7%	37.2%	47.1%	36.0%	43.8%
Male	32.1%	48.5%	32.8%	44.9%	33.3%	45.3%	33.3%	44.2%	33.1%	43.0%
Race/Ethnicity										
American Indian	38.5%	53.2%	38.1%	56.3%	40.1%	58.8%	36.4%	50.0%	38.8%	55.3%
Asian	32.1%	42.7%	31.0%	44.3%	32.4%	36.6%	32.1%	37.0%	31.2%	34.4%
Black/African American	35.4%	70.1%	39.5%	66.7%	40.0%	66.4%	43.1%	66.7%	42.4%	60.1%
Hispanic/Latino	38.3%	67.5%	40.5%	65.2%	41.0%	64.3%	43.4%	63.0%	41.5%	63.6%
Native Hawaiian	*	*	*	*	*	*	40.0%	42.3%	*	*
Two or More Races	*	*	*	*	*	*	34.0%	51.0%	*	*
White	31.5%	42.0%	32.4%	38.0%	32.3%	37.1%	32.2%	35.7%	31.6%	33.3%
English Learner										
Yes	34.9%	75.8%	37.1%	73.2%	36.7%	73.4%	38.0%	72.8%	35.1%	75.0%
No	32.8%	49.1%	34.3%	46.2%	34.4%	45.3%	35.2%	45.0%	34.5%	42.5%
Special Education Status										
Yes	29.8%	77.7%	29.8%	78.4%	28.9%	71.9%	31.9%	75.7%	29.9%	70.2%
No	33.2%	47.5%	34.8%	44.4%	35.0%	43.9%	35.6%	43.1%	35.0%	41.1%
Free/Reduced Price Meal Eligible										
Yes	35.4%	68.2%	39.0%	64.6%	39.2%	64.1%	41.7%	63.4%	40.2%	61.2%
No	32.1%	43.2%	32.8%	39.3%	32.7%	38.0%	33.0%	37.5%	32.3%	34.7%
Total	32.9%	49.8%	34.4%	46.9%	34.5%	46.0%	35.3%	45.7%	34.5%	43.4%

* Data suppressed to protect confidentiality

† This column is a subset of the column immediately preceding it.

Source: P20WIN data and CSDE calculations

Table 4: Credit Attainment by District at CT Public Universities and Community Colleges

District ID	District Name	Graduating Class of 2010		Graduating Class of 2011		Graduating Class of 2012		Graduating Class of 2013		Graduating Class of 2014	
		Percent Enrolled in 16 Months	†Percent Earning 24 Credits	Percent Enrolled in 16 Months	†Percent Earning 24 Credits	Percent Enrolled in 16 Months	†Percent Earning 24 Credits	Percent Enrolled in 16 Months	†Percent Earning 24 Credits	Percent Enrolled in 16 Months	†Percent Earning 24 Credits
2790013	Amistad Academy District	*	*	*	*	*	*	23.8%	*	28.3%	*
0020011	Ansonia School District	41.6%	67.2%	34.3%	69.4%	49.7%	67.8%	46.6%	66.7%	43.6%	58.6%
0040011	Avon School District	26.3%	75.0%	30.9%	70.1%	29.6%	81.9%	31.0%	71.3%	30.1%	79.3%
0070011	Berlin School District	43.4%	75.5%	49.2%	71.3%	51.2%	75.2%	52.1%	79.1%	53.7%	75.4%
0090011	Bethel School District	40.6%	78.6%	42.4%	69.3%	51.7%	79.2%	41.2%	72.3%	42.5%	63.6%
0110011	Bloomfield School District	43.0%	57.4%	48.0%	63.9%	44.6%	46.7%	47.3%	51.9%	49.7%	63.3%
0120011	Bolton School District	51.5%	76.5%	54.4%	83.8%	57.6%	78.9%	58.8%	83.0%	54.2%	73.1%
0140011	Branford School District	33.4%	75.5%	39.4%	60.4%	40.0%	66.3%	37.1%	72.6%	37.7%	70.8%
0150011	Bridgeport School District	38.7%	49.3%	41.1%	51.1%	39.4%	51.8%	41.4%	50.5%	38.6%	45.9%
0170011	Bristol School District	45.3%	69.6%	48.1%	67.7%	44.0%	74.6%	46.4%	74.5%	42.3%	69.0%
0180011	Brookfield School District	38.2%	77.8%	42.6%	77.1%	45.6%	72.2%	34.6%	75.6%	36.6%	74.7%
0230011	Canton School District	36.1%	62.5%	33.9%	66.7%	31.9%	64.9%	37.3%	81.8%	38.1%	66.7%
2410014	CREC	19.6%	66.7%	20.7%	68.4%	22.2%	69.8%	32.4%	55.4%	35.9%	52.9%
0250011	Cheshire School District	35.7%	73.8%	42.6%	69.7%	42.3%	78.4%	37.8%	79.9%	32.7%	80.6%
0270011	Clinton School District	41.4%	70.7%	43.3%	59.0%	39.0%	87.0%	46.2%	80.0%	50.8%	73.8%
0280011	Colchester School District	53.0%	70.2%	51.5%	71.8%	52.1%	66.9%	52.7%	74.8%	48.6%	70.6%
2680013	Common Ground High School	41.4%	*	45.9%	*	56.7%	*	37.1%	*	41.4%	*
9000016	CT Tech Ed & Career System	36.1%	53.5%	36.2%	50.1%	38.3%	56.3%	37.2%	58.7%	36.9%	58.7%
0320011	Coventry School District	50.9%	73.7%	41.8%	72.1%	52.9%	67.1%	44.6%	67.2%	53.9%	76.8%
0330011	Cromwell School District	49.0%	68.6%	51.6%	63.4%	48.9%	70.1%	45.1%	70.0%	50.8%	68.2%
0340011	Danbury School District	49.1%	71.2%	52.6%	65.1%	53.1%	68.9%	49.2%	70.7%	47.8%	67.7%

Table 4: Credit Attainment by District at CT Public Universities and Community Colleges

District ID	District Name	Graduating Class of 2010		Graduating Class of 2011		Graduating Class of 2012		Graduating Class of 2013		Graduating Class of 2014	
		Percent Enrolled in 16 Months	†Percent Earning 24 Credits	Percent Enrolled in 16 Months	†Percent Earning 24 Credits	Percent Enrolled in 16 Months	†Percent Earning 24 Credits	Percent Enrolled in 16 Months	†Percent Earning 24 Credits	Percent Enrolled in 16 Months	†Percent Earning 24 Credits
0350011	Darien School District	16.1%	52.3%	10.1%	62.5%	11.8%	61.1%	9.5%	75.9%	13.8%	48.9%
0370011	Derby School District	32.6%	50.0%	38.9%	74.3%	44.4%	65.0%	54.7%	74.3%	48.5%	52.1%
0400011	East Granby School District	41.3%	*	34.7%	*	40.0%	62.5%	30.9%	76.2%	53.3%	65.6%
0410011	East Haddam School District	52.3%	68.4%	41.4%	88.9%	52.2%	79.2%	45.3%	74.4%	48.5%	74.5%
0420011	East Hampton School District	44.1%	66.7%	53.4%	68.6%	48.4%	76.3%	57.5%	80.8%	54.6%	83.1%
0430011	East Hartford School District	41.5%	56.4%	42.9%	57.3%	44.8%	57.1%	42.9%	51.2%	44.3%	56.6%
0440011	East Haven School District	32.2%	66.2%	46.0%	65.6%	55.8%	62.5%	43.9%	67.8%	44.3%	62.2%
0450011	East Lyme School District	38.2%	60.9%	44.8%	70.6%	39.5%	66.4%	39.4%	75.2%	43.2%	74.1%
0470011	East Windsor School District	51.5%	62.7%	46.3%	83.8%	46.9%	52.6%	28.0%	73.9%	45.5%	60.9%
2530014	EASTCONN	*	*	*	*	36.7%	48.3%	39.7%	47.8%	31.7%	50.0%
0480011	Ellington School District	57.4%	79.0%	51.5%	71.6%	49.5%	76.1%	56.8%	79.8%	52.6%	70.3%
0490011	Enfield School District	49.8%	61.2%	49.1%	67.3%	45.7%	73.3%	44.6%	63.5%	46.1%	63.3%
2720013	Explorations District	34.5%	*	*	*	*	*	30.4%	*	*	*
0510011	Fairfield School District	25.3%	63.2%	26.4%	67.3%	27.3%	60.3%	29.5%	68.3%	25.4%	68.5%
0520011	Farmington School District	42.3%	74.5%	36.4%	66.4%	38.4%	69.4%	47.1%	75.5%	39.0%	70.2%
0540011	Glastonbury School District	46.5%	75.8%	43.7%	74.2%	41.7%	77.2%	42.7%	78.9%	34.8%	80.3%
0560011	Granby School District	30.2%	70.4%	31.9%	68.3%	35.4%	71.6%	41.8%	75.9%	38.0%	71.1%
0570011	Greenwich School District	17.2%	56.9%	21.4%	56.4%	21.0%	67.7%	25.5%	68.4%	20.2%	57.9%
0580011	Griswold School District	47.6%	53.1%	52.9%	56.7%	44.6%	72.0%	49.7%	61.0%	49.7%	54.8%
0590011	Groton School District	47.1%	63.0%	50.7%	69.9%	44.9%	65.6%	43.7%	64.4%	37.4%	59.6%
0600011	Guilford School District	26.4%	63.5%	29.2%	73.3%	30.1%	64.7%	31.6%	73.5%	29.7%	76.3%

Table 4: Credit Attainment by District at CT Public Universities and Community Colleges

District ID	District Name	Graduating Class of 2010		Graduating Class of 2011		Graduating Class of 2012		Graduating Class of 2013		Graduating Class of 2014	
		Percent Enrolled in 16 Months	†Percent Earning 24 Credits	Percent Enrolled in 16 Months	†Percent Earning 24 Credits	Percent Enrolled in 16 Months	†Percent Earning 24 Credits	Percent Enrolled in 16 Months	†Percent Earning 24 Credits	Percent Enrolled in 16 Months	†Percent Earning 24 Credits
0620011	Hamden School District	29.9%	54.9%	40.3%	69.0%	47.5%	68.4%	48.5%	63.2%	42.9%	61.3%
0640011	Hartford School District	21.3%	60.6%	22.9%	59.8%	23.2%	70.1%	45.5%	49.3%	42.9%	52.3%
0690011	Killingly School District	6.1%	*	9.7%	*	14.8%	87.0%	44.3%	70.1%	41.9%	65.3%
2450014	Learn	*	*	*	*	*	*	*	N/A	41.7%	65.0%
0710011	Lebanon School District	44.6%	74.1%	47.6%	68.6%	49.6%	63.8%	49.1%	57.4%	50.0%	82.6%
0720011	Ledyard School District	45.8%	50.9%	42.9%	58.2%	49.7%	68.8%	48.6%	70.9%	45.3%	66.7%
0740011	Litchfield School District	32.1%	64.7%	27.6%	66.7%	37.3%	76.3%	42.5%	70.3%	37.50%	83.30%
0760011	Madison School District	25.9%	73.0%	18.9%	70.7%	26.1%	70.6%	27.0%	70.9%	30.60%	70.80%
0770011	Manchester School District	52.7%	65.7%	52.2%	68.0%	49.5%	61.5%	51.7%	62.0%	44.00%	58.00%
0800011	Meriden School District	41.4%	55.9%	42.8%	54.2%	44.8%	59.7%	44.9%	58.9%	40.80%	58.90%
0830011	Middletown School District	46.0%	61.2%	50.2%	69.6%	40.5%	63.2%	42.3%	67.4%	48.70%	69.20%
0840011	Milford School District	43.5%	71.1%	42.0%	72.7%	39.7%	60.3%	46.7%	68.6%	42.80%	76.70%
0850011	Monroe School District	38.0%	67.3%	43.2%	82.1%	37.3%	73.8%	40.0%	72.1%	41.20%	73.60%
0860011	Montville School District	52.9%	56.4%	52.0%	66.3%	45.8%	62.0%	46.3%	71.1%	40.40%	69.40%
0880011	Naugatuck School District	45.3%	61.6%	52.1%	65.6%	56.3%	73.7%	53.7%	62.3%	49.10%	68.30%
0890011	New Britain School District	48.2%	57.6%	52.0%	51.5%	52.3%	57.7%	44.8%	50.0%	52.00%	59.70%
0900011	New Canaan School District	13.1%	65.8%	13.4%	53.7%	13.3%	53.5%	11.5%	61.5%	13.50%	42.90%
0910011	New Fairfield School District	39.7%	64.7%	39.9%	73.6%	39.9%	82.8%	41.9%	78.8%	45.70%	78.50%
0930011	New Haven School District	34.1%	39.5%	41.5%	46.7%	45.2%	51.1%	46.3%	49.6%	46.80%	53.70%
0950011	New London School District	37.9%	32.8%	46.6%	38.6%	53.6%	42.7%	45.3%	50.0%	45.00%	45.70%
0960011	New Milford School District	45.1%	77.5%	39.3%	80.9%	50.1%	78.8%	46.9%	77.2%	42.20%	77.20%

Table 4: Credit Attainment by District at CT Public Universities and Community Colleges

District ID	District Name	Graduating Class of 2010		Graduating Class of 2011		Graduating Class of 2012		Graduating Class of 2013		Graduating Class of 2014	
		Percent Enrolled in 16 Months	†Percent Earning 24 Credits	Percent Enrolled in 16 Months	†Percent Earning 24 Credits	Percent Enrolled in 16 Months	†Percent Earning 24 Credits	Percent Enrolled in 16 Months	†Percent Earning 24 Credits	Percent Enrolled in 16 Months	†Percent Earning 24 Credits
0940011	Newington School District	55.6%	70.1%	57.7%	76.3%	54.8%	77.4%	55.3%	72.4%	58.00%	73.80%
0970011	Newtown School District	32.4%	67.4%	33.7%	69.2%	30.4%	73.6%	36.4%	74.4%	30.00%	76.80%
0990011	North Branford School District	45.6%	64.2%	44.4%	63.9%	42.4%	76.6%	54.3%	77.5%	41.80%	76.30%
1010011	North Haven School District	42.2%	64.8%	53.0%	72.0%	46.7%	78.6%	42.5%	65.5%	40.30%	66.10%
1020011	North Stonington School District	40.4%	*	42.6%	69.2%	33.3%	*	38.3%	*	42.90%	75.00%
1030011	Norwalk School District	47.7%	57.7%	50.1%	57.7%	49.5%	56.3%	51.4%	64.3%	50.70%	59.30%
9010022	Norwich Free Academy District	50.8%	65.1%	49.8%	55.4%	49.0%	62.3%	50.1%	65.7%	44.10%	62.30%
1060011	Old Saybrook School District	37.0%	70.5%	39.8%	84.4%	28.3%	79.5%	47.4%	73.0%	28.90%	64.90%
1080011	Oxford School District	32.1%	63.9%	50.3%	74.7%	50.7%	68.6%	52.0%	74.4%	53.60%	65.60%
1090011	Plainfield School District	49.5%	56.1%	44.5%	69.9%	45.9%	55.3%	36.3%	61.5%	52.00%	51.90%
1100011	Plainville School District	54.7%	59.5%	52.6%	61.8%	52.3%	65.7%	61.5%	73.9%	53.10%	75.30%
1110011	Plymouth School District	42.7%	56.6%	46.2%	63.3%	45.2%	63.2%	51.3%	67.8%	50.40%	71.90%
1130011	Portland School District	46.6%	70.7%	45.7%	75.7%	45.9%	79.5%	51.2%	71.4%	45.60%	70.20%
1160011	Putnam School District	51.9%	46.3%	35.4%	47.8%	37.1%	56.5%	38.8%	58.1%	20.60%	*
2010012	Regional School District 01	41.0%	56.1%	19.7%	70.8%	24.8%	66.7%	29.4%	73.3%	26.90%	72.40%
2040012	Regional School District 04	30.2%	71.4%	25.3%	76.3%	29.3%	77.3%	44.2%	65.2%	36.40%	77.10%
2050012	Regional School District 05	28.8%	73.7%	33.6%	76.7%	37.7%	78.0%	36.1%	73.9%	37.60%	83.00%
2060012	Regional School District 06	30.8%	79.2%	51.6%	74.5%	38.1%	71.9%	37.0%	79.4%	46.50%	62.50%
2070012	Regional School District 07	43.2%	68.3%	47.2%	68.8%	41.9%	66.3%	40.5%	65.3%	46.70%	73.90%
2080012	Regional School District 08	51.4%	74.5%	51.5%	80.5%	50.9%	81.7%	40.0%	82.7%	41.10%	84.50%
2090012	Regional School District 09	21.3%	77.6%	24.1%	72.5%	26.9%	76.2%	19.6%	79.5%	25.70%	76.20%

Table 4: Credit Attainment by District at CT Public Universities and Community Colleges

District ID	District Name	Graduating Class of 2010		Graduating Class of 2011		Graduating Class of 2012		Graduating Class of 2013		Graduating Class of 2014	
		Percent Enrolled in 16 Months	†Percent Earning 24 Credits	Percent Enrolled in 16 Months	†Percent Earning 24 Credits	Percent Enrolled in 16 Months	†Percent Earning 24 Credits	Percent Enrolled in 16 Months	†Percent Earning 24 Credits	Percent Enrolled in 16 Months	†Percent Earning 24 Credits
2100012	Regional School District 10	42.1%	68.3%	47.4%	72.0%	48.0%	73.8%	40.4%	81.6%	42.70%	76.90%
2110012	Regional School District 11	57.1%	75.0%	50.0%	*	47.6%	*	63.9%	56.5%	64.70%	90.90%
2120012	Regional School District 12	34.7%	57.7%	29.6%	75.0%	31.3%	65.0%	0.0%	N/A	36.70%	62.10%
2130012	Regional School District 13	48.3%	80.0%	43.1%	66.1%	44.6%	83.9%	43.4%	64.5%	42.60%	72.70%
2140012	Regional School District 14	32.5%	75.4%	42.9%	74.4%	33.5%	68.8%	42.6%	75.6%	33.70%	68.60%
2150012	Regional School District 15	45.6%	71.8%	38.4%	71.6%	39.2%	73.6%	43.5%	77.6%	34.10%	60.70%
2160012	Regional School District 16	48.7%	66.7%	56.2%	63.0%	48.6%	71.1%	53.1%	79.8%	50.60%	73.90%
2170012	Regional School District 17	50.0%	64.9%	41.4%	77.1%	40.0%	70.8%	38.6%	70.5%	42.70%	75.00%
2180012	Regional School District 18	24.5%	79.2%	27.5%	58.3%	35.6%	72.2%	30.6%	87.9%	33.00%	85.70%
2190012	Regional School District 19	49.6%	73.9%	47.4%	79.7%	52.9%	76.6%	48.4%	77.0%	46.90%	75.40%
1180011	Ridgefield School District	21.7%	76.3%	20.0%	78.8%	20.5%	74.2%	22.0%	76.4%	18.50%	70.20%
1190011	Rocky Hill School District	52.1%	60.4%	57.8%	74.0%	56.4%	82.7%	54.5%	77.8%	49.70%	83.00%
1240011	Seymour School District	43.2%	73.8%	53.1%	70.6%	55.7%	75.6%	58.0%	71.4%	52.80%	72.70%
1260011	Shelton School District	36.8%	70.3%	39.5%	71.3%	43.5%	75.8%	50.1%	72.4%	44.10%	75.30%
1280011	Simsbury School District	29.5%	70.3%	26.4%	62.6%	30.6%	77.7%	30.6%	74.4%	28.20%	75.70%
1290011	Somers School District	41.7%	69.1%	44.2%	73.8%	35.0%	77.1%	47.9%	79.7%	43.40%	80.40%
1320011	South Windsor School District	56.0%	74.2%	53.3%	71.1%	51.1%	72.3%	45.9%	74.9%	50.60%	81.50%
1310011	Southington School District	49.3%	66.2%	52.9%	69.9%	50.3%	74.3%	46.4%	74.4%	49.50%	74.40%
1340011	Stafford School District	54.6%	71.7%	52.2%	71.2%	34.5%	79.6%	44.0%	72.5%	48.90%	73.10%
2820013	Stamford Academy District	*	*	*	*	30.0%	*	*	*	24.00%	*
1350011	Stamford School District	46.0%	60.6%	49.1%	57.2%	49.3%	60.0%	50.3%	66.0%	48.40%	58.40%

Table 4: Credit Attainment by District at CT Public Universities and Community Colleges

District ID	District Name	Graduating Class of 2010		Graduating Class of 2011		Graduating Class of 2012		Graduating Class of 2013		Graduating Class of 2014	
		Percent Enrolled in 16 Months	†Percent Earning 24 Credits	Percent Enrolled in 16 Months	†Percent Earning 24 Credits	Percent Enrolled in 16 Months	†Percent Earning 24 Credits	Percent Enrolled in 16 Months	†Percent Earning 24 Credits	Percent Enrolled in 16 Months	†Percent Earning 24 Credits
1370011	Stonington School District	36.8%	67.6%	35.7%	68.6%	25.0%	60.5%	34.7%	63.6%	27.20%	89.10%
1380011	Stratford School District	41.6%	65.9%	50.9%	69.3%	48.0%	64.9%	48.6%	66.8%	50.40%	66.90%
1390011	Suffield School District	38.9%	67.1%	38.5%	73.4%	35.1%	70.1%	37.7%	66.7%	37.50%	78.20%
2690013	The Bridge Academy District	38.7%	*	44.8%	*	38.9%	*	60.6%	40.0%	71.90%	69.60%
9020022	The Gilbert School District	56.1%	43.3%	49.2%	75.9%	42.9%	66.7%	58.6%	61.0%	46.80%	47.20%
9030022	The Woodstock Academy District	50.9%	65.0%	45.7%	69.0%	49.5%	68.4%	43.9%	75.6%	44.90%	79.80%
1400011	Thomaston School District	47.4%	75.6%	53.1%	69.2%	51.8%	55.8%	48.6%	75.0%	57.10%	75.00%
1410011	Thompson School District	38.5%	60.0%	31.4%	66.7%	46.7%	78.6%	33.7%	71.4%	36.30%	65.50%
1420011	Tolland School District	45.6%	78.8%	50.0%	71.8%	50.2%	74.3%	49.6%	83.6%	51.90%	73.20%
1430011	Torrington School District	42.6%	67.2%	43.6%	72.8%	40.7%	64.4%	43.8%	71.8%	42.50%	64.60%
1440011	Trumbull School District	39.3%	75.5%	40.0%	66.8%	34.2%	78.0%	44.8%	76.6%	43.10%	74.60%
1460011	Vernon School District	47.7%	68.9%	46.0%	65.8%	52.2%	70.2%	51.0%	65.4%	44.70%	73.50%
1480011	Wallingford School District	36.9%	58.5%	47.0%	71.1%	50.8%	73.8%	43.5%	70.8%	42.50%	69.70%
1510011	Waterbury School District	43.8%	55.7%	50.8%	60.1%	48.8%	55.1%	46.1%	51.8%	48.90%	47.20%
1520011	Waterford School District	49.8%	71.0%	49.0%	65.0%	44.6%	66.7%	38.1%	64.0%	53.70%	80.40%
1530011	Watertown School District	52.8%	64.0%	48.5%	73.2%	52.5%	72.2%	49.8%	70.2%	49.80%	72.50%
1550011	West Hartford School District	38.6%	72.2%	40.9%	74.4%	41.5%	72.2%	39.2%	76.9%	40.80%	68.50%
1560011	West Haven School District	44.4%	60.9%	40.4%	57.5%	50.2%	59.1%	45.8%	66.4%	41.90%	64.20%
1540011	Westbrook School District	40.5%	76.7%	47.2%	76.5%	45.3%	70.6%	33.3%	69.2%	42.30%	60.00%
1570011	Weston School District	15.0%	61.3%	15.1%	82.8%	15.4%	51.7%	17.2%	62.9%	13.60%	58.30%
1580011	Westport School District	11.1%	56.8%	12.8%	55.9%	16.4%	52.2%	15.4%	59.2%	12.60%	58.90%

Table 4: Credit Attainment by District at CT Public Universities and Community Colleges

District ID	District Name	Graduating Class of 2010		Graduating Class of 2011		Graduating Class of 2012		Graduating Class of 2013		Graduating Class of 2014	
		Percent Enrolled in 16 Months	†Percent Earning 24 Credits	Percent Enrolled in 16 Months	†Percent Earning 24 Credits	Percent Enrolled in 16 Months	†Percent Earning 24 Credits	Percent Enrolled in 16 Months	†Percent Earning 24 Credits	Percent Enrolled in 16 Months	†Percent Earning 24 Credits
1590011	Wethersfield School District	46.6%	77.1%	44.3%	71.9%	51.9%	75.7%	55.7%	67.9%	51.70%	72.70%
1610011	Wilton School District	23.6%	64.4%	19.8%	63.3%	18.3%	70.2%	22.2%	75.7%	16.40%	72.90%
1630011	Windham School District	53.9%	56.8%	47.5%	62.4%	51.7%	57.7%	53.1%	58.5%	41.30%	43.90%
1650011	Windsor Locks School District	46.3%	71.0%	38.1%	73.3%	40.0%	51.9%	40.9%	70.4%	40.20%	58.80%
1640011	Windsor School District	47.8%	63.0%	49.2%	62.7%	49.5%	54.2%	48.4%	63.3%	48.50%	58.70%
1660011	Wolcott School District	59.1%	75.8%	51.9%	73.2%	59.2%	74.4%	55.5%	74.4%	58.40%	73.40%

* Data suppressed to protect confidentiality

† This column is a subset of the column immediately preceding it.

Source: P20WIN data and CSDE calculations

Table 5: Remediation by District at CT State University System and Community Colleges

District ID	District Name	Graduating Class of 2010		Graduating Class of 2011		Graduating Class of 2012		Graduating Class of 2013		Graduating Class of 2014	
		Percent Enrolled in 16 Months	†Percent Enrolled in Remediation	Percent Enrolled in 16 Months	†Percent Enrolled in Remediation	Percent Enrolled in 16 Months	†Percent Enrolled in Remediation	Percent Enrolled in 16 Months	†Percent Enrolled in Remediation	Percent Enrolled in 16 Months	†Percent Enrolled in Remediation
2790013	Amistad Academy District	*	*	*	*	*	*	23.8%	*	26.1%	*
0020011	Ansonia School District	36.6%	69.5%	31.5%	62.2%	45.1%	49.4%	42.0%	58.9%	38.3%	66.7%
0040011	Avon School District	16.4%	28.9%	20.1%	28.0%	20.4%	31.6%	22.1%	28.1%	17.3%	21.3%
0070011	Berlin School District	33.6%	40.5%	41.9%	36.5%	41.3%	35.6%	42.4%	40.4%	45.8%	30.8%
0090011	Bethel School District	37.4%	32.6%	36.1%	20.9%	41.8%	24.7%	33.3%	26.3%	34.3%	32.5%
0110011	Bloomfield School District	40.5%	65.6%	42.0%	66.7%	41.1%	63.8%	44.9%	68.0%	45.9%	53.4%
0120011	Bolton School District	40.9%	44.4%	45.6%	25.8%	39.4%	34.6%	47.5%	31.6%	44.8%	18.6%
0140011	Branford School District	27.4%	46.0%	32.0%	59.3%	34.7%	52.9%	28.5%	45.2%	31.0%	43.7%
0150011	Bridgeport School District	34.9%	79.3%	37.0%	70.0%	36.2%	72.7%	39.6%	73.1%	36.4%	71.3%
0170011	Bristol School District	40.5%	45.1%	41.8%	51.0%	38.9%	47.4%	42.7%	43.3%	37.0%	39.5%
0180011	Brookfield School District	30.1%	41.0%	32.4%	24.1%	36.1%	19.8%	28.3%	14.9%	30.8%	17.1%
0230011	Canton School District	29.3%	28.2%	27.8%	34.4%	25.9%	20.0%	23.7%	46.4%	30.6%	34.1%
2410014	CREC	15.8%	48.3%	15.9%	43.2%	16.2%	47.8%	28.5%	52.8%	30.5%	57.3%
0250011	Cheshire School District	23.5%	36.6%	32.4%	35.6%	30.2%	32.8%	27.2%	27.0%	23.0%	24.1%
0270011	Clinton School District	34.3%	39.6%	37.6%	35.8%	30.5%	30.6%	44.6%	39.7%	44.5%	31.6%
0280011	Colchester School District	46.6%	28.4%	43.6%	40.0%	43.7%	30.8%	43.2%	36.5%	42.9%	35.2%
2680013	Common Ground High School	41.4%	*	43.2%	*	43.3%	*	37.1%	*	37.9%	*
9000016	CT Tech Ed & Career System	34.4%	68.6%	34.7%	64.4%	36.3%	66.5%	35.6%	62.3%	34.9%	60.1%
0320011	Coventry School District	39.3%	38.6%	37.7%	38.2%	46.4%	35.9%	33.8%	40.9%	46.1%	28.8%
0330011	Cromwell School District	42.7%	44.3%	43.4%	42.0%	40.9%	30.4%	34.6%	34.8%	45.4%	35.6%
0340011	Danbury School District	42.5%	44.9%	46.3%	39.7%	48.8%	36.2%	43.1%	38.4%	42.1%	40.5%
0350011	Darien School District	12.8%	*	8.9%	*	9.2%	25.0%	5.6%	*	12.3%	15.0%
0370011	Derby School District	30.2%	57.7%	37.8%	47.1%	40.0%	58.3%	51.6%	78.8%	45.5%	42.2%

Table 5: Remediation by District at CT State University System and Community Colleges

District ID	District Name	Graduating Class of 2010		Graduating Class of 2011		Graduating Class of 2012		Graduating Class of 2013		Graduating Class of 2014	
		Percent Enrolled in 16 Months	†Percent Enrolled in Remediation	Percent Enrolled in 16 Months	†Percent Enrolled in Remediation	Percent Enrolled in 16 Months	†Percent Enrolled in Remediation	Percent Enrolled in 16 Months	†Percent Enrolled in Remediation	Percent Enrolled in 16 Months	†Percent Enrolled in Remediation
0400011	East Granby School District	37.0%	*	29.3%	*	35.0%	*	22.1%	*	45.0%	*
0410011	East Haddam School District	47.7%	21.2%	33.3%	31.0%	50.0%	28.3%	40.0%	28.9%	42.3%	39.0%
0420011	East Hampton School District	35.7%	41.2%	48.9%	39.1%	38.9%	29.5%	44.9%	24.6%	47.9%	31.6%
0430011	East Hartford School District	38.6%	60.8%	37.7%	53.5%	38.4%	54.2%	39.4%	53.2%	39.1%	50.3%
0440011	East Haven School District	30.1%	58.3%	43.4%	60.0%	52.3%	55.6%	40.9%	61.7%	43.0%	58.9%
0450011	East Lyme School District	26.2%	40.5%	32.0%	27.5%	29.4%	38.1%	25.6%	39.5%	32.4%	35.7%
0470011	East Windsor School District	45.5%	33.3%	43.8%	48.6%	40.7%	48.5%	24.4%	45.0%	35.6%	41.7%
2530014	EASTCONN	*	*	*	*	32.9%	53.8%	36.2%	57.1%	31.7%	40.0%
0480011	Ellington School District	47.0%	33.7%	45.0%	19.5%	38.7%	27.8%	48.1%	25.0%	42.7%	29.3%
0490011	Enfield School District	45.6%	53.7%	44.8%	48.0%	40.6%	44.3%	40.9%	42.8%	39.8%	49.0%
2720013	Explorations District	34.5%	*	*	*	*	*	26.1%	*	*	*
0510011	Fairfield School District	19.8%	42.5%	20.8%	36.9%	20.2%	47.1%	24.2%	38.0%	19.6%	40.9%
0520011	Farmington School District	31.2%	47.7%	28.8%	35.9%	29.1%	38.1%	34.0%	34.0%	24.7%	24.1%
0540011	Glastonbury School District	32.9%	21.7%	32.3%	23.3%	25.5%	19.0%	29.3%	15.7%	23.2%	15.9%
0560011	Granby School District	22.9%	24.4%	25.5%	18.8%	28.6%	29.6%	27.5%	25.0%	28.0%	21.4%
0570011	Greenwich School District	11.1%	54.7%	16.3%	49.5%	13.7%	50.6%	18.0%	50.4%	16.4%	42.6%
0580011	Griswold School District	42.9%	45.2%	45.9%	47.4%	41.7%	35.7%	41.9%	40.0%	47.6%	41.4%
0590011	Groton School District	35.8%	47.0%	38.8%	38.5%	29.8%	47.1%	34.8%	38.3%	30.2%	39.3%
0600011	Guilford School District	18.6%	44.2%	23.3%	36.7%	20.6%	20.7%	24.3%	34.4%	21.6%	24.1%
0620011	Hamden School District	25.8%	64.5%	35.9%	52.2%	44.4%	54.2%	41.3%	64.4%	37.3%	46.3%
0640011	Hartford School District	16.0%	50.6%	17.7%	53.0%	18.4%	52.2%	42.1%	61.9%	37.3%	60.3%
0690011	Killingly School District	*	*	*	*	8.4%	*	41.4%	54.2%	39.1%	50.0%
2450014	Learn	*	*	*	*	*	*	*	*	32.6%	29.8%

Table 5: Remediation by District at CT State University System and Community Colleges

District ID	District Name	Graduating Class of 2010		Graduating Class of 2011		Graduating Class of 2012		Graduating Class of 2013		Graduating Class of 2014	
		Percent Enrolled in 16 Months	†Percent Enrolled in Remediation	Percent Enrolled in 16 Months	†Percent Enrolled in Remediation	Percent Enrolled in 16 Months	†Percent Enrolled in Remediation	Percent Enrolled in 16 Months	†Percent Enrolled in Remediation	Percent Enrolled in 16 Months	†Percent Enrolled in Remediation
0710011	Lebanon School District	35.5%	46.5%	39.5%	37.9%	44.4%	28.8%	40.9%	26.7%	38.0%	37.1%
0720011	Ledyard School District	38.6%	56.0%	37.7%	46.3%	40.4%	38.5%	39.2%	32.5%	36.4%	46.3%
0740011	Litchfield School District	26.4%	42.9%	23.0%	*	27.5%	*	29.9%	30.8%	31.30%	*
0760011	Madison School District	14.7%	31.0%	13.0%	25.0%	18.1%	22.0%	17.9%	24.6%	18.20%	22.80%
0770011	Manchester School District	44.6%	47.0%	45.2%	55.2%	43.2%	52.5%	47.8%	49.0%	38.90%	45.60%
0800011	Meriden School District	37.2%	65.3%	39.1%	57.1%	42.0%	62.6%	41.5%	56.1%	36.40%	52.20%
0830011	Middletown School District	41.7%	53.3%	45.5%	53.6%	34.9%	63.4%	37.7%	43.1%	39.30%	50.80%
0840011	Milford School District	37.1%	51.0%	34.8%	49.0%	35.2%	51.5%	42.7%	44.5%	35.10%	33.00%
0850011	Monroe School District	30.3%	42.2%	27.1%	36.7%	27.2%	23.9%	31.5%	26.0%	33.00%	27.80%
0860011	Montville School District	48.6%	38.6%	41.8%	37.8%	40.3%	51.9%	34.1%	42.9%	33.70%	41.70%
0880011	Naugatuck School District	40.7%	48.1%	47.3%	52.7%	50.3%	48.8%	47.8%	56.2%	44.60%	46.50%
0890011	New Britain School District	43.9%	68.0%	49.6%	61.6%	49.2%	55.5%	40.5%	62.8%	46.00%	55.50%
0900011	New Canaan School District	9.0%	30.8%	10.1%	32.3%	10.8%	17.1%	8.3%	32.1%	10.30%	18.80%
0910011	New Fairfield School District	33.5%	41.9%	33.8%	33.8%	32.6%	17.1%	38.3%	16.8%	37.60%	21.60%
0930011	New Haven School District	32.3%	71.0%	39.3%	70.1%	42.5%	74.5%	43.2%	70.4%	43.50%	63.50%
0950011	New London School District	35.9%	70.9%	43.3%	59.7%	48.2%	47.5%	38.7%	60.0%	38.30%	52.20%
0960011	New Milford School District	38.3%	24.5%	33.1%	16.8%	41.5%	18.9%	40.2%	16.8%	35.70%	18.30%
0940011	Newington School District	45.0%	46.1%	48.4%	39.5%	47.1%	35.5%	41.8%	35.9%	48.30%	39.30%
0970011	Newtown School District	25.2%	39.0%	27.6%	28.2%	21.9%	27.6%	27.7%	19.2%	22.10%	17.40%
0990011	North Branford School District	38.1%	50.0%	41.7%	43.6%	39.1%	44.1%	46.3%	40.8%	36.90%	36.50%
1010011	North Haven School District	36.5%	53.7%	44.4%	49.2%	38.1%	42.7%	37.1%	47.1%	34.10%	32.00%
1020011	North Stonington School District	30.8%	*	34.4%	33.3%	29.2%	*	34.0%	*	25.00%	*
1030011	Norwalk School District	43.5%	62.9%	45.2%	64.6%	44.0%	54.5%	46.4%	55.1%	46.50%	51.60%

Table 5: Remediation by District at CT State University System and Community Colleges

District ID	District Name	Graduating Class of 2010		Graduating Class of 2011		Graduating Class of 2012		Graduating Class of 2013		Graduating Class of 2014	
		Percent Enrolled in 16 Months	†Percent Enrolled in Remediation	Percent Enrolled in 16 Months	†Percent Enrolled in Remediation	Percent Enrolled in 16 Months	†Percent Enrolled in Remediation	Percent Enrolled in 16 Months	†Percent Enrolled in Remediation	Percent Enrolled in 16 Months	†Percent Enrolled in Remediation
9010022	Norwich Free Academy District	44.8%	50.8%	43.7%	49.6%	42.2%	40.9%	39.8%	42.6%	38.70%	45.70%
1060011	Old Saybrook School District	30.3%	30.6%	24.8%	*	22.5%	*	36.1%	31.3%	21.10%	51.90%
1080011	Oxford School District	21.4%	37.5%	38.3%	31.6%	40.6%	41.1%	43.3%	43.1%	47.00%	31.60%
1090011	Plainfield School District	47.0%	51.6%	38.8%	48.1%	41.6%	51.9%	34.1%	34.4%	48.00%	46.60%
1100011	Plainville School District	51.2%	55.8%	48.8%	48.0%	48.7%	38.9%	55.1%	52.4%	50.00%	43.80%
1110011	Plymouth School District	35.5%	65.9%	40.8%	47.2%	39.7%	46.0%	43.5%	50.0%	44.10%	46.40%
1130011	Portland School District	38.6%	35.3%	39.5%	46.9%	38.8%	36.4%	39.0%	25.0%	41.70%	37.20%
1160011	Putnam School District	49.4%	46.2%	30.8%	45.0%	35.5%	59.1%	36.3%	41.4%	16.20%	*
2010012	Regional School District 01	32.0%	62.5%	16.4%	*	18.8%	*	19.6%	45.0%	23.10%	48.00%
2040012	Regional School District 04	25.9%	36.1%	18.0%	44.4%	23.3%	25.7%	34.0%	34.0%	31.10%	41.50%
2050012	Regional School District 05	21.2%	29.8%	24.7%	31.6%	29.4%	36.3%	25.9%	35.4%	28.50%	22.40%
2060012	Regional School District 06	26.9%	47.6%	40.7%	40.5%	32.1%	40.7%	31.5%	48.3%	40.70%	54.30%
2070012	Regional School District 07	32.1%	39.3%	38.1%	40.0%	31.8%	42.9%	34.6%	37.5%	37.60%	37.80%
2080012	Regional School District 08	39.3%	26.2%	43.2%	22.2%	40.1%	22.3%	27.3%	17.3%	31.60%	19.10%
2090012	Regional School District 09	11.7%	37.0%	13.2%	*	19.2%	*	12.4%	21.4%	21.60%	13.20%
2100012	Regional School District 10	34.4%	44.8%	33.5%	41.4%	39.9%	42.7%	34.0%	29.7%	29.60%	47.60%
2110012	Regional School District 11	45.7%	*	46.4%	*	45.2%	*	50.0%	*	58.80%	30.00%
2120012	Regional School District 12	24.0%	*	23.5%	*	26.6%	*	*	*	32.90%	23.10%
2130012	Regional School District 13	42.1%	31.1%	36.9%	45.8%	39.6%	34.5%	39.9%	24.6%	38.80%	38.00%
2140012	Regional School District 14	26.0%	42.3%	31.0%	43.1%	27.7%	41.5%	31.7%	25.9%	28.40%	30.50%
2150012	Regional School District 15	34.5%	36.4%	29.4%	32.4%	30.4%	27.8%	29.9%	28.3%	25.90%	21.20%
2160012	Regional School District 16	45.2%	48.3%	50.6%	41.1%	41.1%	47.4%	41.2%	42.5%	45.40%	30.40%
2170012	Regional School District 17	42.9%	34.8%	36.7%	32.3%	32.8%	32.2%	32.3%	35.3%	32.00%	29.20%

Table 5: Remediation by District at CT State University System and Community Colleges

District ID	District Name	Graduating Class of 2010		Graduating Class of 2011		Graduating Class of 2012		Graduating Class of 2013		Graduating Class of 2014	
		Percent Enrolled in 16 Months	†Percent Enrolled in Remediation	Percent Enrolled in 16 Months	†Percent Enrolled in Remediation	Percent Enrolled in 16 Months	†Percent Enrolled in Remediation	Percent Enrolled in 16 Months	†Percent Enrolled in Remediation	Percent Enrolled in 16 Months	†Percent Enrolled in Remediation
2180012	Regional School District 18	16.3%	*	20.6%	40.7%	20.8%	*	20.4%	27.3%	19.80%	*
2190012	Regional School District 19	31.5%	27.1%	28.9%	27.8%	36.5%	23.0%	29.4%	18.9%	33.00%	25.80%
1180011	Ridgefield School District	12.4%	15.1%	12.7%	22.2%	12.7%	21.8%	13.8%	*	12.10%	12.70%
1190011	Rocky Hill School District	40.8%	48.3%	45.2%	42.7%	44.6%	44.8%	41.8%	36.2%	37.30%	40.90%
1240011	Seymour School District	36.2%	50.7%	41.3%	39.4%	52.1%	65.8%	51.0%	52.5%	48.00%	36.70%
1260011	Shelton School District	32.0%	46.0%	32.6%	42.4%	35.0%	44.1%	43.1%	40.3%	38.40%	35.10%
1280011	Simsbury School District	17.5%	28.6%	19.1%	22.7%	18.2%	16.7%	21.3%	32.1%	16.80%	29.70%
1290011	Somers School District	38.6%	45.1%	37.0%	23.5%	29.2%	30.0%	39.6%	19.3%	37.20%	43.80%
1320011	South Windsor School District	44.0%	25.6%	41.7%	29.1%	38.6%	26.8%	34.9%	19.7%	37.00%	28.50%
1310011	Southington School District	42.5%	43.3%	44.6%	44.2%	44.4%	35.9%	38.9%	38.9%	40.40%	32.80%
1340011	Stafford School District	46.4%	33.3%	47.8%	31.5%	31.7%	26.7%	38.8%	26.7%	40.90%	37.50%
2820013	Stamford Academy District	*	*	*	*	30.0%	*	*	*	24.00%	*
1350011	Stamford School District	38.5%	61.8%	43.4%	63.1%	41.4%	62.7%	43.5%	59.5%	41.90%	53.00%
1370011	Stonington School District	27.6%	51.0%	24.5%	20.8%	18.0%	38.7%	27.9%	32.1%	17.20%	31.00%
1380011	Stratford School District	39.1%	51.6%	47.4%	52.4%	43.9%	52.4%	43.3%	51.8%	45.20%	47.80%
1390011	Suffield School District	32.0%	41.5%	32.7%	31.3%	26.7%	45.1%	26.6%	29.1%	31.70%	30.30%
2690013	The Bridge Academy District	29.0%	*	37.9%	*	33.3%	*	54.5%	*	65.60%	66.70%
9020022	The Gilbert School District	47.7%	62.7%	35.6%	66.7%	38.1%	62.5%	52.9%	62.2%	42.90%	69.70%
9030022	The Woodstock Academy District	43.5%	41.0%	40.8%	44.3%	42.2%	36.2%	38.4%	34.6%	37.00%	33.70%
1400011	Thomaston School District	41.1%	41.0%	51.0%	54.0%	48.2%	50.0%	41.9%	48.4%	42.90%	63.30%
1410011	Thompson School District	36.3%	54.5%	26.7%	47.8%	38.9%	37.1%	30.1%	48.0%	32.50%	30.80%
1420011	Tolland School District	34.2%	29.5%	37.7%	28.9%	40.4%	33.0%	37.4%	18.5%	42.60%	21.70%
1430011	Torrington School District	35.3%	50.0%	39.0%	40.2%	34.3%	56.5%	37.5%	56.4%	37.80%	37.50%

Table 5: Remediation by District at CT State University System and Community Colleges

District ID	District Name	Graduating Class of 2010		Graduating Class of 2011		Graduating Class of 2012		Graduating Class of 2013		Graduating Class of 2014	
		Percent Enrolled in 16 Months	†Percent Enrolled in Remediation	Percent Enrolled in 16 Months	†Percent Enrolled in Remediation	Percent Enrolled in 16 Months	†Percent Enrolled in Remediation	Percent Enrolled in 16 Months	†Percent Enrolled in Remediation	Percent Enrolled in 16 Months	†Percent Enrolled in Remediation
1440011	Trumbull School District	28.4%	37.2%	30.3%	29.1%	24.8%	27.3%	35.8%	29.7%	34.00%	23.50%
1460011	Vernon School District	38.6%	43.9%	39.1%	32.0%	46.1%	40.2%	44.3%	38.7%	37.50%	40.00%
1480011	Wallingford School District	32.1%	49.7%	42.0%	45.2%	46.3%	37.6%	39.1%	45.9%	38.20%	37.60%
1510011	Waterbury School District	38.5%	69.2%	44.6%	67.5%	43.4%	69.0%	43.0%	70.4%	44.30%	69.30%
1520011	Waterford School District	36.7%	48.1%	37.1%	44.1%	35.6%	26.6%	30.5%	39.1%	43.20%	34.10%
1530011	Watertown School District	44.9%	60.8%	42.0%	36.1%	44.7%	45.9%	41.8%	51.9%	42.00%	50.00%
1550011	West Hartford School District	29.4%	47.5%	29.4%	41.9%	29.9%	41.7%	27.2%	40.3%	27.40%	47.00%
1560011	West Haven School District	41.6%	66.4%	38.6%	60.9%	46.5%	65.2%	44.0%	59.4%	40.40%	48.50%
1540011	Westbrook School District	27.0%	*	36.1%	*	34.7%	46.2%	24.4%	*	38.00%	48.10%
1570011	Weston School District	9.2%	*	8.9%	*	10.6%	*	12.3%	*	7.40%	*
1580011	Westport School District	8.3%	48.5%	9.3%	*	11.9%	*	11.5%	24.5%	9.50%	16.70%
1590011	Wethersfield School District	39.5%	37.8%	37.0%	43.0%	39.3%	38.7%	43.5%	27.1%	41.40%	37.50%
1610011	Wilton School District	15.9%	*	14.2%	20.9%	10.9%	*	13.3%	*	10.60%	*
1630011	Windham School District	45.1%	55.9%	40.2%	50.0%	46.4%	57.1%	46.9%	44.6%	37.00%	62.70%
1650011	Windsor Locks School District	41.8%	44.6%	33.9%	52.5%	34.1%	50.0%	34.8%	37.0%	35.40%	55.60%
1640011	Windsor School District	43.1%	50.0%	41.8%	53.8%	42.6%	45.2%	42.4%	58.1%	45.10%	49.60%
1660011	Wolcott School District	50.7%	46.6%	42.6%	48.9%	48.3%	39.2%	48.3%	39.2%	50.80%	33.10%

* Data suppressed to protect confidentiality

† This column is a subset of the column immediately preceding it.

Source: P20WIN data and CSDE calculations

Table 6: Credit Attainment by School at CT Public Universities and Community Colleges

School ID	School Name	Graduating Class of 2010		Graduating Class of 2011		Graduating Class of 2012		Graduating Class of 2010		Graduating Class of 2011	
		Percent Enrolled in 16 Months	†Percent Earning 24 Credits	Percent Enrolled in 16 Months	†Percent Earning 24 Credits	Percent Enrolled in 16 Months	†Percent Earning 24 Credits	Percent Enrolled in 16 Months	†Percent Earning 24 Credits	Percent Enrolled in 16 Months	†Percent Earning 24 Credits
0026111	Ansonia High School	41.6%	67.2%	34.5%	69.4%	49.7%	67.8%	46.6%	66.7%	43.6%	58.6%
0046111	Avon High School	26.3%	75.0%	30.9%	70.1%	29.6%	81.9%	31.0%	71.3%	30.1%	79.3%
0076111	Berlin High School	43.4%	75.5%	49.2%	71.3%	51.2%	75.2%	51.9%	79.1%	53.7%	75.4%
0096111	Bethel High School	40.6%	78.6%	42.4%	69.3%	51.7%	79.2%	41.2%	72.3%	42.5%	63.6%
0116111	Bloomfield High School	44.2%	58.5%	47.9%	62.7%	46.8%	45.8%	50.4%	56.9%	51.2%	65.1%
0116311	Global Experience Magnet School	*	*	*	*	*	*	34.4%	*	48.1%	*
0126111	Bolton High School	51.5%	76.5%	54.4%	83.8%	57.6%	78.9%	58.8%	83.0%	54.2%	73.1%
0146111	Branford High School	33.4%	75.5%	39.4%	60.4%	40.0%	66.3%	37.1%	72.6%	37.7%	70.8%
0156111	Bassick High School	34.7%	39.7%	32.4%	35.6%	40.3%	40.6%	41.0%	35.6%	29.2%	42.9%
0156211	Central High School	43.1%	54.8%	46.3%	60.4%	40.4%	59.6%	47.3%	58.6%	44.9%	51.4%
0156311	Warren Harding High School	34.6%	44.0%	38.6%	39.8%	36.9%	43.0%	29.6%	43.8%	35.5%	34.1%
0176111	Bristol Central High School	45.0%	66.4%	45.1%	68.3%	38.6%	71.2%	45.6%	68.5%	38.0%	69.7%
0176211	Bristol Eastern High School	47.0%	73.1%	51.4%	67.3%	51.1%	77.5%	48.1%	80.3%	47.2%	68.5%
0186111	Brookfield High School	38.2%	77.8%	42.6%	77.1%	45.6%	72.2%	34.6%	75.6%	36.6%	74.7%
0236111	Canton High School	36.1%	62.5%	33.9%	66.7%	31.9%	64.9%	37.3%	81.8%	38.1%	66.7%
0256111	Cheshire High School	36.2%	73.8%	43.5%	69.5%	43.0%	78.4%	39.2%	79.9%	33.9%	80.6%
0276111	The Morgan School	41.4%	70.7%	43.3%	59.0%	39.0%	87.0%	46.2%	80.0%	50.8%	73.8%
0286111	Bacon Academy	53.0%	70.2%	51.5%	71.8%	52.1%	66.9%	52.7%	74.8%	48.6%	70.6%
0326111	Coventry High School	51.4%	73.7%	41.8%	72.1%	52.9%	67.1%	44.6%	67.2%	53.9%	76.8%
0336111	Cromwell High School	49.0%	68.6%	51.6%	63.4%	48.9%	70.1%	45.1%	70.0%	50.8%	68.2%
0346111	Danbury High School	50.2%	71.1%	53.3%	65.1%	54.8%	68.9%	50.2%	70.8%	48.3%	68.0%
0346211	Alternative Center For Excellence	*	*	*	*	*	*	*	*	30.0%	*
0356111	Darien High School	16.1%	52.3%	10.1%	62.5%	11.8%	61.1%	9.5%	75.9%	13.8%	48.9%
0376111	Derby High School	32.6%	50.0%	38.9%	74.3%	44.4%	65.0%	54.7%	74.3%	48.5%	52.1%

Trends in Enrollment, Credit Attainment, and Remediation
at Connecticut Public Universities and Community Colleges:
Results from P20WIN for the Graduating Classes of 2010 through 2014
Page 26 of 48

Table 6: Credit Attainment by School at CT Public Universities and Community Colleges

School ID	School Name	Graduating Class of 2010		Graduating Class of 2011		Graduating Class of 2012		Graduating Class of 2010		Graduating Class of 2011	
		Percent Enrolled in 16 Months	†Percent Earning 24 Credits	Percent Enrolled in 16 Months	†Percent Earning 24 Credits	Percent Enrolled in 16 Months	†Percent Earning 24 Credits	Percent Enrolled in 16 Months	†Percent Earning 24 Credits	Percent Enrolled in 16 Months	†Percent Earning 24 Credits
0406111	East Granby High School	41.3%	*	34.7%	*	40.0%	62.5%	30.9%	76.2%	53.3%	65.6%
0416111	Nathan Hale-Ray High School	53.8%	68.4%	41.4%	88.9%	52.2%	79.2%	45.3%	74.4%	48.5%	74.5%
0426111	East Hampton High School	45.0%	66.7%	54.3%	68.6%	49.7%	76.3%	57.9%	80.8%	55.6%	83.1%
0436211	East Hartford High School	48.8%	55.3%	53.6%	55.2%	55.0%	54.3%	50.3%	51.5%	50.0%	54.6%
0436311	Connecticut IB Academy	21.4%	*	30.3%	*	40.0%	*	54.1%	85.0%	53.3%	83.3%
0436411	Synergy Alternative Program	*	*	*	*	*	*	16.3%	*	15.1%	*
0446111	East Haven High School	33.3%	66.2%	47.5%	65.6%	56.8%	62.5%	45.3%	67.8%	44.7%	62.2%
0456111	East Lyme High School	38.2%	60.9%	44.8%	70.6%	39.5%	66.4%	39.4%	75.2%	43.2%	74.1%
0476111	East Windsor High School	51.5%	62.7%	46.3%	83.8%	46.9%	52.6%	28.0%	73.9%	45.5%	60.9%
0486111	Ellington High School	57.4%	79.0%	51.5%	71.6%	49.5%	76.1%	56.8%	79.8%	52.6%	70.3%
0496111	Enfield High School	48.5%	59.4%	48.7%	73.2%	43.8%	71.4%	48.0%	60.3%	48.5%	60.8%
0496211	Enrico Fermi High School	51.2%	62.5%	49.8%	62.5%	47.1%	74.4%	43.9%	65.7%	45.8%	65.3%
0516011	Fairfield Ludlowe High School	23.1%	63.0%	23.4%	65.8%	25.4%	59.6%	27.1%	69.0%	23.8%	66.7%
0516211	Fairfield Warde High School	27.5%	63.3%	29.8%	68.6%	29.5%	61.1%	32.5%	67.7%	27.1%	70.2%
0526111	Farmington High School	42.3%	74.5%	36.4%	66.4%	38.4%	69.4%	47.1%	75.5%	39.0%	70.2%
0546111	Glastonbury High School	46.5%	75.8%	43.7%	74.2%	41.7%	77.2%	42.7%	78.9%	34.8%	81.0%
0566111	Granby Memorial High School	30.2%	70.4%	31.9%	68.3%	35.4%	71.6%	41.8%	75.9%	38.2%	71.1%
0576111	Greenwich High School	17.2%	56.9%	21.4%	56.4%	21.0%	67.7%	25.5%	68.4%	20.2%	57.9%
0586211	Griswold High School	47.6%	53.1%	52.9%	56.7%	44.6%	72.0%	49.7%	61.0%	49.7%	54.8%
0596111	Robert E. Fitch High School	47.1%	63.0%	50.7%	69.9%	44.9%	65.6%	43.7%	64.4%	37.7%	59.6%
0606111	Guilford High School	26.4%	63.5%	29.2%	73.3%	30.1%	64.7%	31.6%	73.5%	29.7%	76.3%
0626111	Hamden High School	30.0%	54.9%	40.3%	69.0%	47.5%	68.4%	48.5%	63.2%	42.9%	61.3%
0646011	Culinary Arts Academy-Weaver	*	*	*	*	15.9%	*	28.3%	*	21.3%	*
0646311	Weaver High School	35.3%	40.8%	*	*	*	*	N/A	N/A	N/A	N/A

Table 6: Credit Attainment by School at CT Public Universities and Community Colleges

School ID	School Name	Graduating Class of 2010		Graduating Class of 2011		Graduating Class of 2012		Graduating Class of 2010		Graduating Class of 2011	
		Percent Enrolled in 16 Months	†Percent Earning 24 Credits	Percent Enrolled in 16 Months	†Percent Earning 24 Credits	Percent Enrolled in 16 Months	†Percent Earning 24 Credits	Percent Enrolled in 16 Months	†Percent Earning 24 Credits	Percent Enrolled in 16 Months	†Percent Earning 24 Credits
0646411	Classical Magnet School	26.2%	*	49.4%	*	43.9%	63.9%	54.8%	54.3%	51.9%	83.3%
0646511	Sport & Medical Sciences Acad	61.8%	66.0%	47.4%	65.2%	52.5%	67.3%	64.8%	56.1%	64.2%	54.1%
0646611	Pathways Acad Tech & Design	58.2%	47.8%	54.7%	48.9%	40.0%	68.8%	56.1%	35.1%	45.5%	56.7%
0646711	Univ HS of Science/Engineering	36.4%	65.0%	40.0%	71.4%	46.8%	80.6%	53.8%	72.0%	51.3%	79.5%
0646911	Capital Preparatory Magnet	*	*	40.7%	*	*	*	51.5%	*	52.8%	57.1%
0647111	Bulkeley High School	6.6%	*	4.7%	*	5.1%	*	39.1%	41.3%	32.2%	42.9%
0647211	HPHS Engineering & Green Tech	*	*	*	*	20.8%	55.0%	36.7%	45.5%	49.2%	32.3%
0647411	HPHS Law and Government Acad	20.9%	*	13.4%	*	11.4%	*	40.0%	38.6%	39.6%	40.5%
0647511	HPHS Nursing & Health Sciences	*	*	11.1%	*	*	*	50.0%	39.6%	52.1%	34.0%
0647611	High School, Inc.	*	*	*	*	*	*	47.5%	50.0%	28.3%	*
0647711	Journalism and Media Academy	*	*	*	*	12.2%	*	46.2%	33.3%	31.6%	*
0647911	Great Path Academy at MCC	*	*	*	*	*	*	57.6%	68.4%	63.0%	64.7%
0696111	Killingly High School	6.1%	*	9.7%	*	14.8%	87.0%	44.5%	70.1%	41.9%	65.3%
0716211	Lyman Memorial High School	44.6%	74.1%	47.6%	68.6%	49.6%	63.8%	49.1%	57.4%	50.0%	82.6%
0726111	Ledyard High School	45.8%	50.9%	42.9%	58.2%	49.7%	68.8%	48.6%	70.9%	45.3%	66.7%
0746111	Litchfield High School	32.1%	64.7%	27.6%	66.7%	37.3%	76.3%	42.5%	70.3%	37.5%	83.3%
0766111	Daniel Hand High School	26.0%	73.0%	18.9%	70.7%	26.1%	70.6%	27.0%	70.9%	30.6%	70.8%
0776111	Manchester High School	54.3%	65.7%	55.1%	68.0%	52.7%	61.5%	54.2%	62.0%	46.8%	58.0%
0806111	Francis T. Maloney High School	40.7%	56.4%	43.3%	60.6%	48.6%	59.3%	44.8%	64.7%	38.1%	65.6%
0806211	Orville H. Platt High School	42.2%	55.4%	42.2%	46.7%	40.4%	60.2%	45.0%	52.0%	43.8%	52.8%
0836211	Middletown High School	46.0%	61.2%	50.2%	69.6%	41.2%	63.2%	43.4%	67.4%	49.5%	69.2%
0846211	Jonathan Law High School	41.2%	72.6%	40.7%	71.6%	36.8%	56.0%	45.8%	69.1%	40.4%	71.8%
0846311	Joseph A. Foran High School	45.8%	69.7%	43.1%	73.6%	42.6%	64.0%	47.6%	68.1%	45.5%	81.3%
0856111	Masuk High School	38.0%	67.3%	43.2%	82.1%	37.3%	73.8%	40.0%	72.1%	41.2%	73.6%

Table 6: Credit Attainment by School at CT Public Universities and Community Colleges

School ID	School Name	Graduating Class of 2010		Graduating Class of 2011		Graduating Class of 2012		Graduating Class of 2010		Graduating Class of 2011	
		Percent Enrolled in 16 Months	†Percent Earning 24 Credits	Percent Enrolled in 16 Months	†Percent Earning 24 Credits	Percent Enrolled in 16 Months	†Percent Earning 24 Credits	Percent Enrolled in 16 Months	†Percent Earning 24 Credits	Percent Enrolled in 16 Months	†Percent Earning 24 Credits
0866111	Montville High School	55.3%	56.4%	53.2%	66.3%	47.7%	62.0%	47.5%	72.0%	42.4%	69.4%
0886111	Naugatuck High School	45.3%	61.6%	52.1%	65.6%	56.3%	73.7%	53.7%	62.3%	49.1%	68.3%
0896111	New Britain High School	48.6%	57.6%	52.7%	51.5%	52.8%	57.7%	45.9%	50.5%	53.1%	60.3%
0906111	New Canaan High School	13.1%	65.8%	13.4%	53.7%	13.3%	53.5%	11.5%	61.5%	13.5%	42.9%
0916111	New Fairfield High School	39.7%	64.7%	39.9%	73.6%	39.9%	82.8%	41.9%	78.8%	45.7%	78.5%
0936011	Metropolitan Business Academy	48.3%	*	43.8%	*	54.1%	55.0%	53.8%	46.5%	52.9%	41.3%
0936111	Wilbur Cross High School	32.5%	30.0%	39.0%	34.6%	40.3%	39.2%	36.2%	50.6%	40.3%	46.9%
0936211	James Hillhouse High School	39.7%	45.0%	51.8%	49.0%	43.0%	41.2%	44.5%	47.1%	42.9%	42.5%
0936311	Hill Regional Career High School	38.6%	52.5%	47.3%	53.5%	51.4%	69.4%	58.0%	57.8%	56.4%	68.2%
0936411	Cooperative High School	39.2%	42.1%	35.1%	54.5%	50.8%	68.3%	48.8%	51.3%	48.4%	58.4%
0936611	High School In The Community	34.8%	39.1%	60.0%	66.7%	46.7%	47.6%	43.2%	*	50.0%	*
0936711	Sound School	34.4%	*	30.9%	*	55.0%	50.0%	51.4%	44.7%	48.8%	69.2%
0936811	Cortlandt VR Creed Health&Sport	36.1%	*	36.4%	*	38.1%	*	25.8%	*	45.7%	*
0937011	New Haven Academy	44.4%	*	40.0%	60.0%	66.7%	*	53.6%	50.0%	46.0%	65.5%
0939111	Riverside Education Academy	*	*	*	*	*	*	44.0%	*	36.0%	*
0946111	Newington High School	55.6%	70.1%	57.7%	76.3%	54.8%	77.4%	55.3%	72.4%	58.0%	73.8%
0956111	New London High School	38.2%	32.8%	46.9%	38.6%	53.6%	42.7%	45.6%	50.0%	45.0%	45.7%
0966111	New Milford High School	45.2%	77.5%	39.7%	80.9%	50.6%	78.8%	47.6%	77.2%	42.6%	77.2%
0976111	Newtown High School	32.4%	67.4%	33.7%	69.2%	30.4%	73.6%	36.4%	74.4%	30.1%	76.8%
0996111	North Branford High School	45.6%	64.2%	44.4%	63.9%	42.4%	76.6%	54.3%	77.5%	42.8%	76.3%
1016111	North Haven High School	42.2%	64.8%	53.0%	72.0%	46.7%	78.6%	42.5%	65.5%	40.3%	66.1%
1026111	Wheeler High School	40.4%	*	42.6%	69.2%	33.3%	*	38.3%	*	42.9%	75.0%
1036111	Norwalk High School	47.7%	61.5%	51.6%	57.5%	53.0%	58.1%	51.1%	64.5%	53.8%	61.3%
1036211	Brien McMahon High School	48.6%	56.8%	50.9%	59.5%	47.6%	54.8%	52.8%	64.2%	47.8%	59.5%

Table 6: Credit Attainment by School at CT Public Universities and Community Colleges

School ID	School Name	Graduating Class of 2010		Graduating Class of 2011		Graduating Class of 2012		Graduating Class of 2010		Graduating Class of 2011	
		Percent Enrolled in 16 Months	†Percent Earning 24 Credits	Percent Enrolled in 16 Months	†Percent Earning 24 Credits	Percent Enrolled in 16 Months	†Percent Earning 24 Credits	Percent Enrolled in 16 Months	†Percent Earning 24 Credits	Percent Enrolled in 16 Months	†Percent Earning 24 Credits
1036311	Norwalk Pathways Acad @ Briggs	37.1%	*	*	*	*	*	*	*	48.3%	*
1066111	Old Saybrook Senior High School	37.0%	70.5%	39.8%	84.4%	28.3%	79.5%	47.4%	73.0%	28.9%	64.9%
1086011	Oxford High School	32.1%	63.9%	50.3%	74.7%	50.7%	68.6%	52.0%	74.4%	53.6%	65.6%
1096111	Plainfield High School	49.5%	56.1%	44.5%	69.9%	45.9%	55.3%	36.3%	61.5%	52.0%	51.9%
1106111	Plainville High School	54.7%	59.5%	52.6%	61.8%	52.3%	65.7%	61.5%	73.9%	53.1%	75.3%
1116111	Terryville High School	42.7%	56.6%	46.2%	63.3%	45.2%	63.2%	51.3%	67.8%	50.8%	74.2%
1136111	Portland High School	46.6%	70.7%	45.7%	75.7%	45.9%	79.5%	51.2%	71.4%	45.6%	70.2%
1166111	Putnam High School	52.6%	46.3%	37.1%	47.8%	38.3%	56.5%	39.2%	58.1%	21.5%	*
1186111	Ridgefield High School	21.7%	76.3%	20.2%	78.8%	20.5%	74.2%	22.0%	76.4%	18.5%	70.2%
1196111	Rocky Hill High School	52.1%	60.4%	57.8%	74.0%	56.4%	82.7%	54.5%	77.8%	49.7%	83.0%
1246111	Seymour High School	43.5%	73.8%	53.1%	70.6%	55.7%	75.6%	58.0%	71.4%	52.8%	72.7%
1266111	Shelton High School	36.8%	70.3%	39.5%	71.3%	43.5%	75.8%	50.1%	72.4%	44.3%	75.3%
1286111	Simsbury High School	29.5%	70.3%	26.4%	62.6%	30.6%	77.7%	30.6%	74.4%	28.1%	75.7%
1296111	Somers High School	42.0%	69.1%	44.2%	73.8%	35.0%	77.1%	47.9%	79.7%	43.4%	80.4%
1316211	Southington High School	49.3%	66.2%	52.9%	69.9%	50.3%	74.3%	46.5%	74.4%	49.5%	74.4%
1326211	South Windsor High School	56.2%	74.2%	53.3%	71.1%	51.4%	72.3%	46.1%	74.9%	50.8%	81.5%
1346111	Stafford High School	54.6%	71.7%	52.2%	71.2%	34.5%	79.6%	44.3%	72.5%	48.9%	73.1%
1356111	Stamford High School	53.6%	61.7%	51.5%	55.4%	47.6%	57.6%	50.7%	60.3%	51.6%	60.8%
1356311	Westhill High School	40.4%	58.0%	44.4%	55.9%	49.1%	59.9%	46.3%	66.8%	44.0%	52.7%
1356411	The Acad Info, Tech & Engineering	45.4%	66.1%	60.4%	65.4%	54.0%	64.8%	61.3%	77.0%	53.0%	66.7%
1376111	Stonington High School	36.8%	67.6%	35.7%	68.6%	25.0%	60.5%	34.7%	63.6%	27.2%	89.1%
1386111	Stratford High School	43.3%	60.2%	53.3%	65.8%	47.6%	62.5%	49.4%	62.2%	50.4%	67.2%
1386211	Bunnell High School	41.2%	70.6%	50.8%	72.0%	49.4%	67.2%	48.8%	70.8%	52.0%	66.7%
1396111	Suffield High School	38.9%	67.1%	38.5%	73.4%	35.1%	70.1%	37.7%	66.7%	37.5%	78.2%

Trends in Enrollment, Credit Attainment, and Remediation
at Connecticut Public Universities and Community Colleges:
Results from P20WIN for the Graduating Classes of 2010 through 2014
Page 30 of 48

Table 6: Credit Attainment by School at CT Public Universities and Community Colleges

School ID	School Name	Graduating Class of 2010		Graduating Class of 2011		Graduating Class of 2012		Graduating Class of 2010		Graduating Class of 2011	
		Percent Enrolled in 16 Months	†Percent Earning 24 Credits	Percent Enrolled in 16 Months	†Percent Earning 24 Credits	Percent Enrolled in 16 Months	†Percent Earning 24 Credits	Percent Enrolled in 16 Months	†Percent Earning 24 Credits	Percent Enrolled in 16 Months	†Percent Earning 24 Credits
1406211	Thomaston High School	47.4%	75.6%	53.1%	69.2%	51.8%	55.8%	48.6%	75.0%	57.1%	75.0%
1416111	Tourtellotte Memorial HS	38.5%	60.0%	31.8%	66.7%	47.7%	78.6%	34.1%	71.4%	36.3%	65.5%
1426111	Tolland High School	45.6%	78.8%	50.0%	71.8%	50.2%	74.3%	49.6%	83.6%	51.9%	73.2%
1436111	Torrington High School	42.6%	67.2%	43.6%	72.8%	40.7%	64.4%	43.8%	71.8%	42.5%	64.6%
1446111	Trumbull High School	39.3%	75.5%	40.0%	66.8%	34.2%	78.0%	44.8%	76.6%	43.1%	74.6%
1466111	Rockville High School	49.1%	68.9%	46.9%	65.8%	53.5%	70.2%	51.9%	65.4%	45.0%	73.5%
1486111	Lyman Hall High School	35.4%	53.3%	45.6%	63.4%	53.5%	70.1%	40.4%	60.7%	42.1%	72.5%
1486211	Mark T. Sheehan High School	38.6%	64.0%	49.6%	79.5%	49.4%	78.4%	48.4%	81.3%	43.4%	67.4%
1516011	Waterbury Arts Magnet (High)	51.9%	60.7%	56.1%	71.9%	65.0%	59.7%	53.3%	69.4%	49.6%	60.0%
1516211	Crosby High School	46.7%	59.8%	51.3%	57.9%	47.3%	58.9%	45.7%	53.2%	52.0%	47.7%
1516311	Wilby High School	39.1%	42.1%	43.6%	51.0%	41.5%	41.2%	38.7%	39.6%	49.6%	37.8%
1516411	John F. Kennedy High School	45.0%	60.7%	56.4%	63.2%	54.8%	60.1%	53.1%	54.9%	46.9%	50.4%
1526111	Waterford High School	49.8%	71.0%	49.0%	65.0%	44.6%	66.7%	38.1%	64.0%	53.7%	80.4%
1536111	Watertown High School	52.8%	64.0%	48.5%	73.2%	52.5%	72.2%	49.6%	70.2%	49.8%	72.5%
1546111	Westbrook High School	40.5%	76.7%	47.2%	76.5%	45.3%	70.6%	33.3%	69.2%	42.3%	60.0%
1556111	Conard High School	39.2%	73.4%	42.0%	75.2%	46.8%	73.5%	42.0%	75.0%	41.6%	67.6%
1556211	Hall High School	38.1%	71.1%	40.7%	73.6%	38.0%	70.5%	37.8%	79.3%	40.9%	70.2%
1566111	West Haven High School	44.4%	60.9%	40.4%	57.5%	50.2%	59.1%	45.8%	66.4%	42.2%	64.2%
1576111	Weston High School	15.0%	61.3%	15.1%	82.8%	15.4%	51.7%	17.2%	62.9%	13.6%	58.3%
1586111	Staples High School	11.1%	56.8%	12.8%	55.9%	16.4%	52.2%	15.4%	59.2%	12.6%	58.9%
1596111	Wethersfield High School	46.6%	77.1%	44.3%	71.9%	51.9%	75.7%	55.7%	67.9%	51.7%	72.7%
1616111	Wilton High School	23.6%	64.4%	19.8%	63.3%	18.3%	70.2%	22.2%	75.7%	16.4%	72.9%
1636111	Windham High School	56.3%	56.8%	47.8%	62.4%	51.7%	57.7%	52.5%	58.5%	41.3%	43.9%
1646111	Windsor High School	47.8%	63.0%	49.2%	62.7%	49.5%	54.2%	48.4%	63.3%	48.5%	58.7%

Trends in Enrollment, Credit Attainment, and Remediation
at Connecticut Public Universities and Community Colleges:
Results from P20WIN for the Graduating Classes of 2010 through 2014

Table 6: Credit Attainment by School at CT Public Universities and Community Colleges

School ID	School Name	Graduating Class of 2010		Graduating Class of 2011		Graduating Class of 2012		Graduating Class of 2010		Graduating Class of 2011	
		Percent Enrolled in 16 Months	†Percent Earning 24 Credits	Percent Enrolled in 16 Months	†Percent Earning 24 Credits	Percent Enrolled in 16 Months	†Percent Earning 24 Credits	Percent Enrolled in 16 Months	†Percent Earning 24 Credits	Percent Enrolled in 16 Months	†Percent Earning 24 Credits
1656111	Windsor Locks High School	46.3%	71.0%	38.1%	73.3%	40.0%	51.9%	40.9%	70.4%	40.2%	58.8%
1666111	Wolcott High School	59.1%	75.8%	51.9%	73.2%	59.2%	74.4%	55.5%	74.4%	58.4%	73.4%
2016112	Housatonic Valley Regional HS	41.0%	56.1%	19.7%	70.8%	24.8%	66.7%	29.4%	73.3%	26.9%	72.4%
2046112	Valley Regional High School	30.2%	71.4%	25.3%	76.3%	29.3%	77.3%	44.2%	65.2%	36.4%	77.1%
2056112	Amity Regional High School	28.8%	73.7%	33.6%	76.7%	37.7%	78.0%	36.1%	73.9%	37.6%	83.0%
2066112	Wamogo Regional High School	30.8%	79.2%	51.6%	74.5%	38.1%	71.9%	37.0%	79.4%	46.0%	62.5%
2076112	Northwestern Regional HS	46.6%	68.3%	50.8%	68.8%	46.6%	67.1%	42.9%	67.1%	49.5%	73.9%
2086112	RHAM High School	51.4%	74.5%	51.5%	80.5%	50.9%	81.7%	40.6%	82.7%	42.3%	84.5%
2096112	Joel Barlow High School	21.3%	77.6%	24.1%	72.5%	26.9%	76.2%	19.6%	79.5%	25.8%	76.2%
2106112	Lewis S. Mills High School	42.1%	68.3%	47.4%	72.0%	48.0%	73.8%	40.4%	81.6%	42.5%	77.8%
2116112	Parish Hill High School	57.1%	75.0%	50.0%	*	47.6%	*	63.9%	56.5%	64.7%	90.9%
2126112	Shepaug Valley High School	34.7%	57.7%	29.6%	75.0%	31.3%	65.0%	N/A	N/A	N/A	N/A
2120312	Shepaug Valley School	*	*	*	*	*	*	*	*	36.7%	62.1%
2136112	Coginchaug Regional High School	48.3%	80.0%	43.1%	66.1%	44.6%	83.9%	43.4%	64.5%	42.6%	72.7%
2146112	Nonnewaug High School	32.5%	75.4%	42.9%	74.4%	33.5%	68.8%	42.6%	75.6%	33.7%	68.6%
2156212	Pomperaug Regional High School	45.6%	71.8%	38.4%	71.6%	39.2%	73.6%	43.5%	77.6%	34.1%	60.7%
2166012	Woodland Regional High School	48.7%	66.7%	56.2%	63.0%	48.6%	71.1%	53.1%	79.8%	50.6%	73.9%
2176112	Haddam-Killingworth High School	50.0%	64.9%	41.4%	77.1%	40.0%	70.8%	38.6%	70.5%	42.7%	75.0%
2186112	Lyme-Old Lyme High School	24.5%	79.2%	27.5%	58.3%	35.6%	72.2%	30.6%	87.9%	33.0%	85.7%
2196112	E. O. Smith High School	49.6%	73.9%	47.4%	79.7%	52.9%	76.6%	48.4%	77.0%	46.9%	75.4%
2415114	Acad of Aerospace & Engineering	*	*	*	*	30.0%	*	50.0%	*	46.7%	*
2415214	Civic Leadership High School	*	*	*	*	*	*	*	*	44.7%	*
2416114	Metro Learn Cent Global Studies	38.8%	66.7%	48.4%	60.9%	54.2%	56.4%	50.6%	61.4%	52.2%	58.3%
2416314	Great Path Academy at MCC	*	*	*	*	20.0%	*	*	*	*	*

Table 6: Credit Attainment by School at CT Public Universities and Community Colleges

School ID	School Name	Graduating Class of 2010		Graduating Class of 2011		Graduating Class of 2012		Graduating Class of 2010		Graduating Class of 2011	
		Percent Enrolled in 16 Months	†Percent Earning 24 Credits	Percent Enrolled in 16 Months	†Percent Earning 24 Credits	Percent Enrolled in 16 Months	†Percent Earning 24 Credits	Percent Enrolled in 16 Months	†Percent Earning 24 Credits	Percent Enrolled in 16 Months	†Percent Earning 24 Credits
2416414	Greater Hartford Acad Arts HS	*	*	*	*	*	*	20.5%	50.0%	18.9%	48.4%
2416514	Academy of Science & Innovation	*	*	*	*	*	*	*	*	55.6%	56.0%
2456014	Connecticut River Academy	*	*	*	*	*	*	*	*	37.1%	63.6%
2456114	Marine Science Magnet HS	*	*	*	*	*	*	*	*	47.8%	*
2456214	Three Rivers Middle College	*	*	*	*	*	*	*	N/A	51.6%	*
2536014	Arts at Capitol Theater Magnet	*	*	*	*	46.9%	*	58.3%	*	42.4%	*
2536114	Quinebaug Middle College	*	*	*	*	37.8%	*	32.1%	*	26.1%	*
2686113	Common Ground High School	41.4%	*	45.9%	*	56.7%	*	37.1%	*	41.4%	*
2696113	The Bridge Academy	38.7%	*	44.8%	*	38.9%	*	60.6%	40.0%	71.9%	69.6%
2726113	Explorations	34.5%	*	*	*	*	*	30.4%	*	*	*
2795113	Amistad Academy	*	*	*	*	*	*	23.8%	*	28.3%	*
2826013	Stamford Academy	*	*	*	*	30.0%	*	*	*	24.0%	*
9001116	Bullard-Havens Technical HS	43.6%	46.7%	47.0%	55.8%	45.6%	62.9%	53.4%	55.4%	43.0%	58.1%
9001216	Henry Abbott Technical HS	38.8%	48.1%	43.7%	45.5%	35.0%	54.5%	30.8%	75.0%	39.6%	65.5%
9001316	H. H. Ellis Technical High School	25.4%	59.4%	28.7%	54.5%	26.2%	60.6%	30.1%	47.1%	22.4%	54.2%
9001416	Eli Whitney Technical High School	34.5%	55.2%	38.0%	47.4%	44.3%	37.3%	33.0%	27.3%	32.4%	38.2%
9001516	A. I. Prince Technical High School	45.5%	42.6%	47.9%	37.3%	45.5%	43.7%	36.8%	48.2%	50.0%	51.7%
9001616	Howell Cheney Technical HS	34.6%	56.8%	32.3%	58.1%	32.1%	46.7%	41.2%	58.8%	40.6%	61.9%
9001716	H. C. Wilcox Technical High School	37.2%	67.2%	34.5%	57.4%	45.0%	65.6%	35.6%	66.7%	36.0%	66.1%
9001816	Vinal Technical High School	27.4%	58.8%	19.2%	29.2%	25.6%	56.3%	34.6%	65.2%	31.9%	48.8%
9001916	E. C. Goodwin Technical HS	42.2%	37.1%	33.0%	42.4%	37.2%	51.1%	34.7%	46.5%	26.8%	45.9%
9002016	Norwich Technical High School	38.3%	41.7%	34.5%	50.0%	25.0%	56.8%	30.7%	46.8%	27.2%	56.1%
9002216	Oliver Wolcott Technical HS	32.2%	64.4%	36.5%	46.2%	30.6%	57.1%	32.1%	50.9%	36.4%	60.8%
9002316	W. F. Kaynor Technical HS	37.6%	54.8%	40.4%	55.9%	53.5%	66.3%	47.3%	70.8%	48.3%	64.4%

Trends in Enrollment, Credit Attainment, and Remediation
at Connecticut Public Universities and Community Colleges:
Results from P20WIN for the Graduating Classes of 2010 through 2014

Table 6: Credit Attainment by School at CT Public Universities and Community Colleges

School ID	School Name	Graduating Class of 2010		Graduating Class of 2011		Graduating Class of 2012		Graduating Class of 2010		Graduating Class of 2011	
		Percent Enrolled in 16 Months	†Percent Earning 24 Credits	Percent Enrolled in 16 Months	†Percent Earning 24 Credits	Percent Enrolled in 16 Months	†Percent Earning 24 Credits	Percent Enrolled in 16 Months	†Percent Earning 24 Credits	Percent Enrolled in 16 Months	†Percent Earning 24 Credits
9002416	Windham Technical High School	41.4%	63.0%	35.0%	61.9%	46.3%	66.1%	41.2%	66.7%	37.5%	68.8%
9002516	Emmett O'Brien Technical HS	21.3%	56.5%	40.7%	50.0%	36.9%	43.8%	30.4%	62.9%	35.0%	48.8%
9002616	Platt Technical High School	32.2%	61.2%	29.3%	51.8%	42.0%	65.2%	34.1%	65.7%	34.6%	74.6%
9002716	Ella T. Grasso Technical HS	43.2%	43.9%	33.3%	47.5%	31.5%	41.3%	37.5%	61.1%	36.6%	51.1%
9016122	Norwich Free Academy	50.8%	65.1%	49.8%	55.4%	49.0%	62.3%	49.7%	65.7%	43.9%	62.3%
9026122	The Gilbert School	56.1%	43.3%	49.2%	75.9%	42.9%	66.7%	58.6%	61.0%	46.8%	47.2%
9036122	The Woodstock Academy	50.9%	65.0%	45.7%	69.0%	49.5%	68.4%	43.9%	75.6%	44.7%	79.8%

* Data suppressed to protect confidentiality

† This column is a subset of the column immediately preceding it.

Source: P20WIN data and CSDE calculations

Table 7: Remediation by School at CT State University System and Community Colleges

School ID	School Name	Graduating Class of 2010		Graduating Class of 2011		Graduating Class of 2012		Graduating Class of 2013		Graduating Class of 2014	
		Percent Enrolled in 16 Months	†Percent Enrolled in Remediation	Percent Enrolled in 16 Months	†Percent Enrolled in Remediation	Percent Enrolled in 16 Months	†Percent Enrolled in Remediation	Percent Enrolled in 16 Months	†Percent Enrolled in Remediation	Percent Enrolled in 16 Months	†Percent Enrolled in Remediation
0026111	Ansonia High School	36.6%	69.5%	31.7%	62.2%	45.1%	49.4%	42.0%	58.9%	38.3%	66.7%
0046111	Avon High School	16.4%	28.9%	20.1%	28.0%	20.4%	31.6%	22.1%	28.1%	17.3%	21.3%
0076111	Berlin High School	33.6%	40.5%	41.9%	36.5%	41.3%	35.6%	42.2%	40.4%	45.8%	30.8%
0096111	Bethel High School	37.4%	32.6%	36.1%	20.9%	41.8%	24.7%	33.3%	26.3%	34.3%	32.5%
0116111	Bloomfield High School	41.5%	63.9%	41.4%	63.8%	43.5%	64.2%	47.3%	63.9%	46.3%	54.4%
0116311	Global Experience Magnet School	*	*	*	*	*	*	34.4%	*	48.1%	*
0126111	Bolton High School	40.9%	44.4%	45.6%	25.8%	39.4%	34.6%	47.5%	31.6%	44.8%	18.6%
0146111	Branford High School	27.4%	46.0%	32.0%	59.3%	34.7%	52.9%	28.5%	45.2%	31.0%	43.7%
0156111	Bassick High School	33.2%	81.5%	30.2%	86.8%	37.7%	80.0%	39.2%	83.1%	28.3%	75.0%
0156211	Central High School	37.9%	74.0%	40.7%	62.1%	35.7%	63.4%	44.6%	68.0%	41.3%	67.5%
0156311	Warren Harding High School	31.3%	89.5%	35.8%	75.3%	36.1%	85.7%	29.6%	76.6%	34.6%	77.5%
0176111	Bristol Central High School	40.3%	41.7%	39.1%	44.2%	35.6%	48.6%	43.0%	40.2%	32.1%	37.0%
0176211	Bristol Eastern High School	41.9%	49.1%	44.8%	56.0%	43.5%	46.3%	43.2%	46.5%	42.4%	41.2%
0186111	Brookfield High School	30.1%	41.0%	32.4%	24.1%	36.1%	19.8%	28.3%	14.9%	30.8%	17.1%
0236111	Canton High School	29.3%	28.2%	27.8%	34.4%	25.9%	20.0%	23.7%	46.4%	30.6%	34.1%
0256111	Cheshire High School	23.8%	36.6%	33.1%	35.9%	30.7%	32.8%	28.2%	27.0%	23.8%	24.1%
0276111	The Morgan School	34.3%	39.6%	37.6%	35.8%	30.5%	30.6%	44.6%	39.7%	44.5%	31.6%
0286111	Bacon Academy	46.6%	28.4%	43.6%	40.0%	43.7%	30.8%	43.2%	36.5%	42.9%	35.2%
0326111	Coventry High School	39.6%	38.6%	37.7%	38.2%	46.4%	35.9%	33.8%	40.9%	46.1%	28.8%
0336111	Cromwell High School	42.7%	44.3%	43.4%	42.0%	40.9%	30.4%	34.6%	34.8%	45.4%	35.6%
0346111	Danbury High School	43.5%	45.1%	46.8%	39.5%	50.3%	36.2%	43.9%	38.0%	42.5%	39.6%
0346211	Alternative Center For Excellence	*	*	*	*	*	*	*	*	30.0%	*
0356111	Darien High School	12.8%	*	8.9%	*	9.2%	25.0%	5.6%	*	12.3%	15.0%
0376111	Derby High School	30.2%	57.7%	37.8%	47.1%	40.0%	58.3%	51.6%	78.8%	45.5%	42.2%

Table 7: Remediation by School at CT State University System and Community Colleges

School ID	School Name	Graduating Class of 2010		Graduating Class of 2011		Graduating Class of 2012		Graduating Class of 2013		Graduating Class of 2014	
		Percent Enrolled in 16 Months	†Percent Enrolled in Remediation	Percent Enrolled in 16 Months	†Percent Enrolled in Remediation	Percent Enrolled in 16 Months	†Percent Enrolled in Remediation	Percent Enrolled in 16 Months	†Percent Enrolled in Remediation	Percent Enrolled in 16 Months	†Percent Enrolled in Remediation
0406111	East Granby High School	37.0%	*	29.3%	*	35.0%	*	22.1%	*	45.0%	*
0416111	Nathan Hale-Ray High School	49.1%	21.2%	33.3%	31.0%	50.0%	28.3%	40.0%	28.9%	42.3%	39.0%
0426111	East Hampton High School	36.4%	41.2%	49.6%	39.1%	39.9%	29.5%	45.2%	24.6%	48.7%	31.6%
0436211	East Hartford High School	45.9%	61.7%	48.3%	54.6%	48.7%	55.9%	46.5%	53.8%	44.2%	54.2%
0436311	Connecticut IB Academy	*	*	*	*	17.1%	*	43.2%	*	44.4%	*
0436411	Synergy Alternative Program	*	*	*	*	*	*	16.3%	*	15.1%	*
0446111	East Haven High School	31.2%	58.3%	44.7%	60.0%	53.3%	55.6%	42.2%	61.7%	43.4%	58.9%
0456111	East Lyme High School	26.2%	40.5%	32.0%	27.5%	29.4%	38.1%	25.6%	39.5%	32.4%	35.7%
0476111	East Windsor High School	45.5%	33.3%	43.8%	48.6%	40.7%	48.5%	24.4%	45.0%	35.6%	41.7%
0486111	Ellington High School	47.0%	33.7%	45.0%	19.5%	38.7%	27.8%	48.1%	25.0%	42.7%	29.3%
0496111	Enfield High School	45.5%	51.1%	46.2%	37.0%	38.1%	52.2%	44.1%	53.7%	41.1%	47.8%
0496211	Enrico Fermi High School	46.0%	55.7%	44.0%	57.5%	42.3%	39.7%	40.2%	35.4%	40.2%	50.0%
0516011	Fairfield Ludlowe High School	17.4%	34.4%	17.5%	32.2%	18.8%	39.4%	22.0%	39.5%	18.4%	41.5%
0516211	Fairfield Warde High School	22.3%	49.3%	24.6%	40.8%	21.7%	54.3%	26.9%	36.6%	20.7%	40.3%
0526111	Farmington High School	31.2%	47.7%	28.8%	35.9%	29.1%	38.1%	34.0%	34.0%	24.7%	24.1%
0546111	Glastonbury High School	32.9%	21.7%	32.3%	23.3%	25.5%	19.0%	29.3%	15.7%	23.0%	16.3%
0566111	Granby Memorial High School	22.9%	24.4%	25.5%	18.8%	28.6%	29.6%	27.5%	25.0%	28.1%	21.4%
0576111	Greenwich High School	11.1%	54.7%	16.3%	49.5%	13.7%	50.6%	18.0%	50.4%	16.4%	42.6%
0586211	Griswold High School	42.9%	45.2%	45.9%	47.4%	41.7%	35.7%	41.9%	40.0%	47.6%	41.4%
0596111	Robert E. Fitch High School	35.8%	47.0%	38.8%	38.5%	29.8%	47.1%	34.8%	38.3%	30.4%	39.3%
0606111	Guilford High School	18.6%	44.2%	23.3%	36.7%	20.6%	20.7%	24.3%	34.4%	21.6%	24.1%
0626111	Hamden High School	25.8%	64.5%	35.9%	52.2%	44.4%	54.2%	41.3%	64.4%	37.3%	46.3%
0646011	Culinary Arts Academy-Weaver	*	*	*	*	15.9%	*	28.3%	*	20.0%	*
0646311	Weaver High School	31.7%	*	*	75.9%	*	*	N/A	N/A	N/A	N/A

Table 7: Remediation by School at CT State University System and Community Colleges

School ID	School Name	Graduating Class of 2010		Graduating Class of 2011		Graduating Class of 2012		Graduating Class of 2013		Graduating Class of 2014	
		Percent Enrolled in 16 Months	†Percent Enrolled in Remediation	Percent Enrolled in 16 Months	†Percent Enrolled in Remediation	Percent Enrolled in 16 Months	†Percent Enrolled in Remediation	Percent Enrolled in 16 Months	†Percent Enrolled in Remediation	Percent Enrolled in 16 Months	†Percent Enrolled in Remediation
0646411	Classical Magnet School	20.0%	*	38.6%	*	39.0%	59.4%	50.0%	57.1%	46.9%	39.5%
0646511	Sport & Medical Sciences Acad	52.6%	45.0%	39.2%	52.6%	47.5%	40.4%	55.7%	46.9%	55.8%	47.2%
0646611	Pathways Acad Tech & Design	53.2%	42.9%	46.5%	62.5%	35.0%	64.3%	50.0%	72.7%	37.9%	52.0%
0646711	Univ HS of Science/Engineering	34.5%	*	32.9%	*	28.6%	45.5%	45.2%	23.8%	36.8%	28.6%
0646911	Capital Preparatory Magnet	*	*	37.0%	*	*	*	48.5%	*	45.3%	50.0%
0647111	Bulkeley High School	*	*	*	*	4.0%	*	36.6%	67.8%	28.9%	65.9%
0647211	HPHS Engineering & Green Tech	*	*	*	*	15.6%	*	32.2%	79.3%	42.9%	66.7%
0647411	HPHS Law and Government Acad	*	*	9.8%	*	*	*	40.0%	68.2%	35.8%	78.9%
0647511	HPHS Nursing & Health Sciences	*	*	10.2%	*	*	*	48.1%	76.5%	47.9%	78.3%
0647611	High School, Inc.	*	*	*	*	*	*	46.3%	78.4%	22.6%	*
0647711	Journalism and Media Academy	*	*	*	*	*	*	46.2%	91.7%	28.1%	*
0647911	Great Path Academy at MCC	*	*	*	*	*	*	54.5%	38.9%	53.7%	72.4%
0696111	Killingly High School	*	*	*	*	8.4%	*	41.6%	54.2%	39.1%	50.0%
0716211	Lyman Memorial High School	35.5%	46.5%	39.5%	37.9%	44.4%	28.8%	40.9%	26.7%	38.0%	37.1%
0726111	Ledyard High School	38.6%	56.0%	37.7%	46.3%	40.4%	38.5%	39.2%	32.5%	36.4%	46.3%
0746111	Litchfield High School	26.4%	42.9%	23.0%	*	27.5%	*	29.9%	30.8%	31.3%	*
0766111	Daniel Hand High School	14.7%	31.0%	13.0%	25.0%	18.1%	22.0%	17.9%	24.6%	18.2%	22.8%
0776111	Manchester High School	46.0%	47.0%	47.6%	55.2%	46.0%	52.5%	50.0%	49.0%	41.3%	45.6%
0806111	Francis T. Maloney High School	37.2%	61.6%	37.7%	52.6%	46.2%	59.8%	40.5%	55.2%	33.7%	50.6%
0806211	Orville H. Platt High School	37.2%	69.1%	40.8%	61.8%	37.2%	66.7%	42.7%	57.0%	39.3%	53.7%
0836211	Middletown High School	41.7%	53.3%	45.5%	53.6%	35.6%	63.4%	38.7%	43.1%	40.0%	50.8%
0846211	Jonathan Law High School	34.2%	55.7%	34.2%	45.6%	33.3%	51.3%	41.7%	49.0%	33.3%	43.5%
0846311	Joseph A. Foran High School	40.0%	47.1%	35.4%	51.7%	37.0%	51.7%	43.6%	40.4%	37.0%	23.1%
0856111	Masuk High School	30.3%	42.2%	27.1%	36.7%	27.2%	23.9%	31.5%	26.0%	33.0%	27.8%

Table 7: Remediation by School at CT State University System and Community Colleges

School ID	School Name	Graduating Class of 2010		Graduating Class of 2011		Graduating Class of 2012		Graduating Class of 2013		Graduating Class of 2014	
		Percent Enrolled in 16 Months	†Percent Enrolled in Remediation	Percent Enrolled in 16 Months	†Percent Enrolled in Remediation	Percent Enrolled in 16 Months	†Percent Enrolled in Remediation	Percent Enrolled in 16 Months	†Percent Enrolled in Remediation	Percent Enrolled in 16 Months	†Percent Enrolled in Remediation
0866111	Montville High School	50.8%	38.6%	42.8%	37.8%	42.0%	51.9%	34.8%	41.8%	35.3%	41.7%
0886111	Naugatuck High School	40.7%	48.1%	47.3%	52.7%	50.3%	48.8%	47.8%	56.2%	44.6%	46.5%
0896111	New Britain High School	44.4%	68.0%	50.2%	61.6%	49.7%	55.5%	41.4%	62.9%	46.9%	55.6%
0906111	New Canaan High School	9.0%	30.8%	10.1%	32.3%	10.8%	17.1%	8.3%	32.1%	10.3%	18.8%
0916111	New Fairfield High School	33.5%	41.9%	33.8%	33.8%	32.6%	17.1%	38.3%	16.8%	37.6%	21.6%
0936011	Metropolitan Business Academy	48.3%	*	40.6%	*	54.1%	90.0%	52.5%	71.4%	49.4%	62.8%
0936111	Wilbur Cross High School	30.5%	74.5%	36.8%	78.3%	38.3%	74.6%	33.0%	65.3%	38.2%	65.9%
0936211	James Hillhouse High School	37.7%	70.2%	50.8%	71.4%	42.4%	79.1%	44.0%	81.0%	42.4%	81.4%
0936311	Hill Regional Career High School	35.9%	60.0%	44.0%	68.2%	43.6%	68.9%	50.3%	61.1%	48.1%	56.0%
0936411	Cooperative High School	37.1%	86.1%	34.0%	56.3%	48.4%	65.0%	43.8%	67.1%	44.0%	58.6%
0936611	High School In The Community	33.3%	72.7%	54.5%	66.7%	44.4%	75.0%	40.9%	*	44.4%	*
0936711	Sound School	33.3%	*	27.3%	*	52.5%	81.0%	51.4%	76.3%	45.0%	25.0%
0936811	Cortlandt VR Creed Health & Sport	36.1%	*	33.3%	*	38.1%	*	19.4%	*	45.7%	*
0937011	New Haven Academy	38.9%	*	40.0%	70.0%	57.6%	*	51.8%	62.1%	42.9%	63.0%
0939111	Riverside Education Academy	*	*	*	*	*	*	44.0%	*	36.0%	*
0946111	Newington High School	45.0%	46.1%	48.4%	39.5%	47.1%	35.5%	41.8%	35.9%	48.3%	39.3%
0956111	New London High School	36.2%	70.9%	43.5%	59.7%	48.2%	47.5%	38.9%	60.0%	38.3%	52.2%
0966111	New Milford High School	38.4%	24.5%	33.5%	16.8%	41.8%	18.9%	40.7%	16.8%	36.0%	18.3%
0976111	Newtown High School	25.2%	39.0%	27.6%	28.2%	21.9%	27.6%	27.7%	19.2%	22.2%	17.4%
0996111	North Branford High School	38.1%	50.0%	41.7%	43.6%	39.1%	44.1%	46.3%	40.8%	37.7%	36.5%
1016111	North Haven High School	36.5%	53.7%	44.4%	49.2%	38.1%	42.7%	37.1%	47.1%	34.1%	32.0%
1026111	Wheeler High School	30.8%	*	34.4%	33.3%	29.2%	*	34.0%	*	25.0%	*
1036111	Norwalk High School	43.4%	57.7%	45.4%	64.1%	45.6%	52.6%	44.9%	50.0%	49.0%	55.2%
1036211	Brien McMahon High School	44.2%	64.4%	46.7%	63.3%	43.5%	55.6%	48.6%	58.7%	43.9%	44.7%

Table 7: Remediation by School at CT State University System and Community Colleges

School ID	School Name	Graduating Class of 2010		Graduating Class of 2011		Graduating Class of 2012		Graduating Class of 2013		Graduating Class of 2014	
		Percent Enrolled in 16 Months	†Percent Enrolled in Remediation	Percent Enrolled in 16 Months	†Percent Enrolled in Remediation	Percent Enrolled in 16 Months	†Percent Enrolled in Remediation	Percent Enrolled in 16 Months	†Percent Enrolled in Remediation	Percent Enrolled in 16 Months	†Percent Enrolled in Remediation
1036311	Norwalk Pathways Acad @ Briggs	37.1%	*	*	*	*	*	*	*	48.3%	*
1066111	Old Saybrook Senior High School	30.3%	30.6%	24.8%	*	22.5%	*	36.1%	31.3%	21.1%	51.9%
1086011	Oxford High School	21.4%	37.5%	38.3%	31.6%	40.6%	41.1%	43.3%	43.1%	47.0%	31.6%
1096111	Plainfield High School	47.0%	51.6%	38.8%	48.1%	41.6%	51.9%	34.1%	34.4%	48.0%	46.6%
1106111	Plainville High School	51.2%	55.8%	48.8%	48.0%	48.7%	38.9%	55.1%	52.4%	50.0%	43.8%
1116111	Terryville High School	35.5%	65.9%	40.8%	47.2%	39.7%	46.0%	43.5%	50.0%	44.3%	44.4%
1136111	Portland High School	38.6%	35.3%	39.5%	46.9%	38.8%	36.4%	39.0%	25.0%	41.7%	37.2%
1166111	Putnam High School	50.0%	46.2%	32.3%	45.0%	36.7%	59.1%	36.7%	41.4%	16.9%	*
1186111	Ridgefield High School	12.4%	15.1%	12.8%	22.2%	12.7%	21.8%	13.9%	*	12.1%	12.7%
1196111	Rocky Hill High School	40.8%	48.3%	45.2%	42.7%	44.6%	44.8%	41.8%	36.2%	37.3%	40.9%
1246111	Seymour High School	36.4%	50.7%	41.3%	39.4%	52.1%	65.8%	51.0%	52.5%	48.0%	36.7%
1266111	Shelton High School	32.0%	46.0%	32.6%	42.4%	35.0%	44.1%	43.1%	40.3%	38.5%	35.1%
1286111	Simsbury High School	17.5%	28.6%	19.1%	22.7%	18.2%	16.7%	21.3%	32.1%	16.8%	29.7%
1296111	Somers High School	38.9%	45.1%	37.0%	23.5%	29.2%	30.0%	39.6%	19.3%	37.2%	43.8%
1316211	Southington High School	42.5%	43.3%	44.6%	44.2%	44.4%	35.9%	39.0%	38.9%	40.4%	32.8%
1326211	South Windsor High School	44.1%	25.6%	41.7%	29.1%	38.8%	26.8%	35.1%	19.7%	37.2%	28.5%
1346111	Stafford High School	46.4%	33.3%	47.8%	31.5%	31.7%	26.7%	39.1%	26.7%	40.9%	37.5%
1356111	Stamford High School	42.4%	66.3%	43.7%	63.0%	40.6%	68.1%	43.6%	66.5%	43.6%	50.5%
1356311	Westhill High School	34.5%	59.4%	41.1%	66.1%	40.8%	65.5%	41.3%	62.3%	39.8%	62.2%
1356411	The Acad Info, Tech & Engineering	42.3%	56.4%	52.2%	54.3%	44.8%	43.8%	50.3%	35.4%	43.3%	33.8%
1376111	Stonington High School	27.6%	51.0%	24.5%	20.8%	18.0%	38.7%	27.9%	32.1%	17.2%	31.0%
1386111	Stratford High School	39.9%	54.7%	52.3%	61.6%	43.3%	58.7%	46.1%	59.5%	43.4%	50.0%
1386211	Bunnell High School	39.2%	49.2%	45.4%	44.8%	45.6%	46.6%	41.6%	44.4%	48.0%	46.2%
1396111	Suffield High School	32.0%	41.5%	32.7%	31.3%	26.7%	45.1%	26.6%	29.1%	31.7%	30.3%

Table 7: Remediation by School at CT State University System and Community Colleges

School ID	School Name	Graduating Class of 2010		Graduating Class of 2011		Graduating Class of 2012		Graduating Class of 2013		Graduating Class of 2014	
		Percent Enrolled in 16 Months	†Percent Enrolled in Remediation	Percent Enrolled in 16 Months	†Percent Enrolled in Remediation	Percent Enrolled in 16 Months	†Percent Enrolled in Remediation	Percent Enrolled in 16 Months	†Percent Enrolled in Remediation	Percent Enrolled in 16 Months	†Percent Enrolled in Remediation
1406211	Thomaston High School	41.1%	41.0%	51.0%	54.0%	48.2%	50.0%	41.9%	48.4%	42.9%	63.3%
1416111	Tourtellotte Memorial HS	36.3%	54.5%	27.1%	47.8%	39.8%	37.1%	30.5%	48.0%	32.5%	30.8%
1426111	Tolland High School	34.2%	29.5%	37.7%	28.9%	40.4%	33.0%	37.4%	18.5%	42.6%	21.7%
1436111	Torrington High School	35.3%	50.0%	39.0%	40.2%	34.3%	56.5%	37.5%	56.4%	37.8%	37.5%
1446111	Trumbull High School	28.4%	37.2%	30.3%	29.1%	24.8%	27.3%	35.8%	29.7%	34.0%	23.5%
1466111	Rockville High School	39.8%	43.9%	39.9%	32.0%	47.3%	40.2%	45.1%	38.7%	37.8%	40.0%
1486111	Lyman Hall High School	31.5%	56.3%	40.4%	54.1%	48.7%	42.0%	37.4%	57.6%	38.0%	40.2%
1486211	Mark T. Sheehan High School	32.7%	42.5%	44.7%	35.6%	45.1%	32.1%	42.1%	32.3%	38.8%	34.1%
1516011	Waterbury Arts Magnet (High)	46.3%	72.0%	52.6%	61.7%	62.1%	50.0%	50.0%	65.2%	44.6%	55.6%
1516211	Crosby High School	42.4%	68.0%	44.3%	68.6%	43.8%	76.8%	43.2%	71.4%	46.6%	72.7%
1516311	Wilby High School	35.4%	74.4%	41.0%	64.6%	39.0%	81.3%	35.2%	73.3%	46.1%	71.2%
1516411	John F. Kennedy High School	36.9%	64.1%	46.7%	71.1%	43.3%	62.4%	49.7%	69.2%	42.0%	69.1%
1526111	Waterford High School	36.7%	48.1%	37.1%	44.1%	35.6%	26.6%	30.5%	39.1%	43.2%	34.1%
1536111	Watertown High School	44.9%	60.8%	42.0%	36.1%	44.7%	45.9%	41.6%	51.9%	42.0%	50.0%
1546111	Westbrook High School	27.0%	*	36.1%	*	34.7%	46.2%	24.4%	*	38.0%	48.1%
1556111	Conard High School	31.8%	46.0%	31.6%	39.8%	34.4%	45.6%	29.8%	36.9%	29.3%	57.0%
1556211	Hall High School	27.1%	49.1%	27.9%	44.0%	26.8%	36.9%	25.4%	44.7%	26.0%	36.5%
1566111	West Haven High School	41.6%	66.4%	38.6%	60.9%	46.5%	65.2%	44.0%	59.4%	40.6%	48.5%
1576111	Weston High School	9.2%	*	8.9%	*	10.6%	*	12.3%	*	7.4%	*
1586111	Staples High School	8.3%	48.5%	9.3%	*	11.9%	*	11.5%	24.5%	9.5%	16.7%
1596111	Wethersfield High School	39.5%	37.8%	37.0%	43.0%	39.3%	38.7%	43.5%	27.1%	41.4%	37.5%
1616111	Wilton High School	15.9%	*	14.2%	20.9%	10.9%	*	13.3%	*	10.6%	*
1636111	Windham High School	47.2%	55.9%	40.4%	50.0%	46.4%	57.1%	46.4%	44.6%	37.0%	62.7%
1646111	Windsor High School	43.1%	50.0%	41.8%	53.8%	42.6%	45.2%	42.4%	58.1%	45.1%	49.6%

Table 7: Remediation by School at CT State University System and Community Colleges

School ID	School Name	Graduating Class of 2010		Graduating Class of 2011		Graduating Class of 2012		Graduating Class of 2013		Graduating Class of 2014	
		Percent Enrolled in 16 Months	†Percent Enrolled in Remediation	Percent Enrolled in 16 Months	†Percent Enrolled in Remediation	Percent Enrolled in 16 Months	†Percent Enrolled in Remediation	Percent Enrolled in 16 Months	†Percent Enrolled in Remediation	Percent Enrolled in 16 Months	†Percent Enrolled in Remediation
1656111	Windsor Locks High School	41.8%	44.6%	33.9%	52.5%	34.1%	50.0%	34.8%	37.0%	35.4%	55.6%
1666111	Wolcott High School	50.7%	46.6%	42.6%	48.9%	48.3%	39.2%	48.3%	39.2%	50.8%	33.1%
2016112	Housatonic Valley Regional HS	32.0%	62.5%	16.4%	*	18.8%	*	19.6%	45.0%	23.1%	48.0%
2046112	Valley Regional High School	25.9%	36.1%	18.0%	44.4%	23.3%	25.7%	34.0%	34.0%	31.1%	41.5%
2056112	Amity Regional High School	21.2%	29.8%	24.7%	31.6%	29.4%	36.3%	25.9%	35.4%	28.5%	22.4%
2066112	Wamogo Regional High School	26.9%	47.6%	40.7%	40.5%	32.1%	40.7%	31.5%	48.3%	40.2%	54.3%
2076112	Northwestern Regional HS	34.7%	39.3%	41.0%	40.0%	35.8%	42.9%	36.5%	35.5%	39.8%	37.8%
2086112	RHAM High School	39.3%	26.2%	43.2%	22.2%	40.1%	22.3%	27.7%	17.3%	32.5%	19.1%
2096112	Joel Barlow High School	11.7%	37.0%	13.2%	*	19.2%	*	12.4%	21.4%	21.7%	13.2%
2106112	Lewis S. Mills High School	34.4%	44.8%	33.5%	41.4%	39.9%	42.7%	34.0%	29.7%	29.2%	48.4%
2116112	Parish Hill High School	45.7%	*	46.4%	*	45.2%	*	50.0%	*	58.8%	30.0%
2126112	Shepaug Valley High School	24.0%	*	23.5%	*	26.6%	*	*	*	*	*
2120312	Shepaug Valley School	*	*	*	*	*	*	*	*	32.9%	23.1%
2136112	Coginchaug Regional High School	42.1%	31.1%	36.9%	45.8%	39.6%	34.5%	39.9%	24.6%	38.8%	38.0%
2146112	Nonnewaug High School	26.0%	42.3%	31.0%	43.1%	27.7%	41.5%	31.7%	25.9%	28.4%	30.5%
2156212	Pomperaug Regional High School	34.5%	36.4%	29.4%	32.4%	30.4%	27.8%	29.9%	28.3%	25.9%	21.2%
2166012	Woodland Regional High School	45.2%	48.3%	50.6%	41.1%	41.1%	47.4%	41.2%	42.5%	45.4%	30.4%
2176112	Haddam-Killingworth High School	42.9%	34.8%	36.7%	32.3%	32.8%	32.2%	32.3%	35.3%	32.0%	29.2%
2186112	Lyme-Old Lyme High School	16.3%	*	20.6%	40.7%	20.8%	*	20.4%	27.3%	19.8%	*
2196112	E. O. Smith High School	31.5%	27.1%	28.9%	27.8%	36.5%	23.0%	29.4%	18.9%	33.0%	25.8%
2415114	Acad of Aerospace & Engineering	*	*	*	*	*	*	38.2%	*	33.3%	*
2415214	Civic Leadership High School	*	*	*	*	*	*	*	*	44.7%	*
2416114	Metro Learn Center Global Studies	34.1%	48.3%	41.1%	41.0%	51.4%	48.6%	43.7%	55.3%	42.4%	51.3%
2416314	Great Path Academy at MCC	*	*	*	*	10.8%	*	N/A	N/A	N/A	N/A

Table 7: Remediation by School at CT State University System and Community Colleges

School ID	School Name	Graduating Class of 2010		Graduating Class of 2011		Graduating Class of 2012		Graduating Class of 2013		Graduating Class of 2014	
		Percent Enrolled in 16 Months	†Percent Enrolled in Remediation	Percent Enrolled in 16 Months	†Percent Enrolled in Remediation	Percent Enrolled in 16 Months	†Percent Enrolled in Remediation	Percent Enrolled in 16 Months	†Percent Enrolled in Remediation	Percent Enrolled in 16 Months	†Percent Enrolled in Remediation
2416414	Greater Hartford Acad Arts HS	*	*	*	*	*	*	20.5%	56.7%	17.7%	58.6%
2416514	Academy of Science & Innovation	*	*	*	*	*	*	*	*	42.2%	*
2456014	Connecticut River Academy	*	*	*	*	*	*	*	*	30.3%	33.3%
2456114	Marine Science Magnet HS	*	*	*	*	*	*	*	*	26.1%	*
2456214	Three Rivers Middle College	*	*	*	*	*	*	*	*	45.2%	*
2536014	Arts at Capitol Theater Magnet	*	*	*	*	37.5%	*	54.2%	*	42.4%	*
2536114	Quinebaug Middle College	*	*	*	*	37.8%	*	28.6%	*	26.1%	*
2686113	Common Ground High School	41.4%	*	43.2%	*	43.3%	*	37.1%	*	37.9%	*
2696113	The Bridge Academy	29.0%	*	37.9%	*	33.3%	*	54.5%	*	65.6%	66.7%
2726113	Explorations	34.5%	*	*	*	*	*	26.1%	*	*	*
2795113	Amistad Academy	*	*	*	*	*	*	23.8%	*	26.1%	*
2826013	Stamford Academy	*	*	*	*	30.0%	*	*	*	24.0%	*
9001116	Bullard-Havens Technical HS	41.2%	82.8%	44.8%	57.3%	45.6%	80.9%	52.9%	83.0%	41.9%	77.8%
9001216	Henry Abbott Technical HS	38.1%	75.5%	43.7%	57.6%	35.0%	61.8%	30.1%	37.2%	38.1%	52.8%
9001316	H. H. Ellis Technical High School	24.6%	67.7%	27.8%	53.1%	24.6%	67.7%	29.2%	60.6%	20.6%	40.9%
9001416	Eli Whitney Technical High School	34.5%	82.8%	38.0%	81.6%	40.9%	83.0%	32.0%	87.5%	31.4%	84.8%
9001516	A. I. Prince Technical High School	44.0%	78.0%	44.3%	87.1%	42.9%	79.1%	33.6%	72.5%	47.2%	78.6%
9001616	Howell Cheney Technical HS	33.9%	39.5%	31.6%	38.1%	29.3%	65.9%	39.4%	63.1%	36.8%	57.9%
9001716	H. C. Wilcox Technical High School	34.6%	70.4%	31.6%	64.3%	41.5%	66.3%	35.0%	58.1%	34.3%	47.5%
9001816	Vinal Technical High School	26.6%	54.5%	19.2%	66.7%	25.6%	65.6%	33.8%	57.8%	31.1%	66.7%
9001916	E. C. Goodwin Technical HS	38.6%	90.6%	31.0%	83.9%	35.5%	72.1%	33.1%	80.5%	25.4%	77.1%
9002016	Norwich Technical High School	38.3%	69.4%	34.5%	50.0%	24.3%	52.8%	28.1%	48.8%	25.2%	44.7%
9002216	Oliver Wolcott Technical HS	31.1%	52.6%	35.4%	60.3%	29.4%	55.3%	30.9%	58.8%	35.0%	69.4%
9002316	W. F. Kaynor Technical HS	33.9%	62.5%	39.0%	66.7%	48.3%	66.3%	44.7%	58.3%	45.6%	37.8%

Table 7: Remediation by School at CT State University System and Community Colleges

School ID	School Name	Graduating Class of 2010		Graduating Class of 2011		Graduating Class of 2012		Graduating Class of 2013		Graduating Class of 2014	
		Percent Enrolled in 16 Months	†Percent Enrolled in Remediation	Percent Enrolled in 16 Months	†Percent Enrolled in Remediation	Percent Enrolled in 16 Months	†Percent Enrolled in Remediation	Percent Enrolled in 16 Months	†Percent Enrolled in Remediation	Percent Enrolled in 16 Months	†Percent Enrolled in Remediation
9002416	Windham Technical High School	38.7%	60.5%	34.2%	56.1%	44.8%	50.0%	38.2%	38.0%	36.7%	63.8%
9002516	Emmett O'Brien Technical HS	21.3%	65.2%	37.2%	71.4%	33.8%	72.7%	29.6%	73.5%	31.7%	61.5%
9002616	Platt Technical High School	29.3%	59.0%	27.7%	69.8%	41.5%	54.5%	32.7%	59.7%	32.7%	43.3%
9002716	Ella T. Grasso Technical HS	41.7%	80.0%	31.7%	71.1%	26.0%	65.8%	35.4%	52.9%	33.3%	61.0%
9016122	Norwich Free Academy	44.8%	50.8%	43.7%	49.6%	42.2%	40.9%	39.5%	42.6%	38.5%	45.7%
9026122	The Gilbert School	47.7%	62.7%	35.6%	66.7%	38.1%	62.5%	52.9%	62.2%	42.9%	69.7%
9036122	The Woodstock Academy	43.5%	41.0%	40.8%	44.3%	42.2%	36.2%	38.4%	34.6%	36.8%	33.7%

* Data suppressed to protect confidentiality

† This column is a subset of the column immediately preceding it.

Source: P20WIN data and CSDE calculations

Table 8: Enrollment in CT Private Colleges and Universities

Student Group	Graduating Class of 2013	Graduating Class of 2014
Gender		
Female	7.9%	8.6%
Male	5.1%	5.4%
Race/Ethnicity		
American Indian	*	*
Asian	6.6%	5.9%
Black/African American	8.0%	8.7%
Hispanic/Latino	5.4%	6.2%
Native Hawaiian	*	*
Two or More Races	*	*
White	6.5%	7.0%
English Learners		
Yes	2.5%	2.6%
No	6.6%	7.1%
Students with Disabilities		
Yes	2.4%	4.3%
No	6.9%	7.3%
Free or Reduced Price Meal Eligible		
Yes	5.6%	6.6%
No	6.9%	7.2%
Total	6.5%	7.0%

* Data suppressed to protect confidentiality

Enrollment is anytime within 16 months of high school graduation

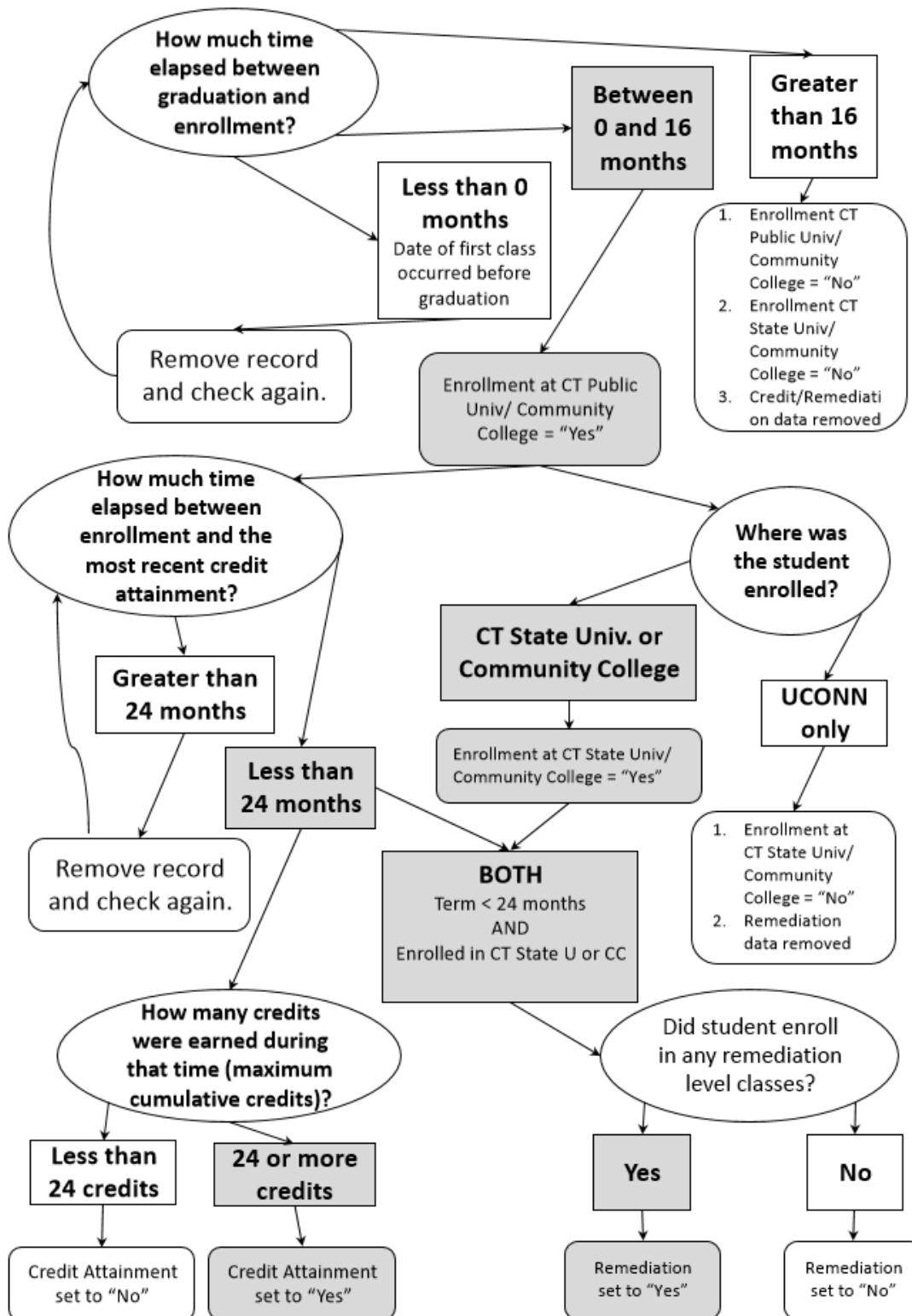
Source: National Student Clearinghouse and CSDE calculations

Appendix C: Methods

Explanation of Programming Logic for Term/Student-level Records: (see Figure 1 on next page):

1. **Var1:** All students enrolled in a CPUCC within 16 months of graduation.
 - If earliest start-of-term date before graduation (i.e., a dual-enrollment student), term record discarded before repeating this step.
 - If earliest start-of-term date more than 16 months after graduation:
 - Student-level enrollment at CPUCC = "No" (*Var1=0*)
 - Student-level enrollment at CSCU = "No" (*Var3=0*)
 - Student-level credit and remediation data removed (*Var2, Var4 = missing*)
 - If the earliest start-of-term date within 16 months after graduation:
 - Student-level enrollment at CPUCC = "Yes" (*Var1=1*)
2. **Var2:** Out of those students where enrollment at CPUCC = "Yes" (*Var1=1*), all students with 24 or more credits within two years of enrollment.
 - For each term record, time between credit attainment date and enrollment date calculated. If more than two years, term record discarded.
 - Calculated the maximum number of cumulative credits for each student:
 - If 24 or more credits, student-level credit attainment = "Yes" (*Var2=1*)
 - Otherwise, student-level credit attainment = "No" (*Var2=0*)
3. **Var3:** Out of those students where enrollment at CPUCC = "Yes" (*Var1=1*), regardless of credit attainment, all students enrolled in a CSCU within 16 months of graduation.
 - If UCONN only:
 - Student-level enrollment at CSCU = "No" (*Var3=0*)
 - Student-level remediation data removed (*Var4 = missing*)
 - If a student attended a CSCU, enrollment at CSCU was set to "Yes" (*Var3=1*)
4. **Var4:** Out of those students where enrollment at CSCU = "Yes" (*Var3=1*), regardless of credit attainment, all students with at least one remedial class within two years
 - If remediation occurred, student-level remediation = "Yes" (*Var4=1*).
 - Otherwise, student-level remediation = "No" (*Var4=0*).

Visual Representation of Programming Logic



Calculation of School/District-level records:

1. The school/district percentage of students enrolled at a CPUCC within 16 months of graduation is the number of students within each school/district with a “Yes” for enrollment at a CPUCC divided by the total number of students within the school/district then multiplied by 100%.

$$\frac{\text{sum of Var1}}{\text{count of graduates in each school/district}} * 100\%$$

2. The school/district percentage of students who completed one year’s worth of credit within two years of enrollment is the number of students within each school/district with a “Yes” for credit attainment divided by the number of students within each school/district with a “Yes” for enrollment at a CPUCC then multiplied by 100%.

$$\frac{\text{sum of Var2}}{\text{sum of Var1}} * 100\%$$

3. The school/district percentage of students enrolled at a CSCU within 16 months of graduation is the number of students within each school/district with a “Yes” for enrollment at a CSCU divided by the total number of students within the school/district then multiplied by 100%.

$$\frac{\text{sum of Var3}}{\text{count of graduates in each school/district}} * 100\%$$

4. The school/district percentage of students enrolled in a remedial course is the number of students within each school/district with a “Yes” for remediation divided by the number of students within each school/district with a “Yes” for enrollment at a CSCU then multiplied by 100%.

$$\frac{\text{sum of Var4}}{\text{sum of Var3}} * 100\%$$

For information about data suppression rules used in this analysis, please visit:

edsight.ct.gov/relatedreports/BDCRE%20Data%20Suppression%20Rules.pdf