



CONNECTICUT STATE DEPARTMENT OF EDUCATION

Connecticut Adult Education

State Board of Education

March 4, 2015

Connecticut Adult Education

Outline

- Connecticut State Plan for Adult Education and Family Literacy (revision)
- Connecticut Adult Education Overview
- General Educational Development (GED®)
- Next Steps



Connecticut Adult Education

State Plan Revision

- 1998: Workforce Investment Act (WIA) authorized
- 2001-04: Current approved State Plan for Adult Education and Family Literacy under the WIA
- 2004-present: State Board of Education approves annual revisions to the CT State Plan



Connecticut Adult Education

State Plan Revision

- 2014: President signed into law the new Workforce Innovation and Opportunity Act (WIOA)
- 2015-16: Transition year to WIOA
- 2016-17: Implementation of WIOA
- New activities for transition to new WIOA include:
 - Implementation of College and Career Readiness Standards
 - Career Pathways
 - Workforce Development
 - Transition to Postsecondary Education and Training



Connecticut Adult Education

State Plan Revision

- Performance targets for adult education
 - literacy skill levels
 - postsecondary completion
 - employment outcomes
- Targets are proposed to the Office of Career, Technical and Adult Education (OCTAE)
- Continued federal funding for expansion of adult education program offerings is contingent upon Plan approval



Connecticut Adult Education

Overview

- Each local or regional board of education is required to provide a program of classes for its adult residents
- Programs include:
 - Americanization/United States Citizenship
 - English for adults with limited English proficiency (ESL)
 - Elementary and Secondary completion programs and classes



Connecticut Adult Education Overview

- Connecticut offers three distinct pathways for adults to attain a high school diploma.
 - Adult High School Credit Diploma Program (AHSCDP)
 - prescribed plan that requires a minimum of 20 credits in academic and elective areas
 - National External Diploma Program (NEDP)
 - life experience portfolio assessment program
 - General Educational Development (GED®)
 - Four subject high school equivalency exam



GED® Test

- 2002 test updated in 2014
 - Aligned to Common Core State Standards
 - Four Part Examination
 - Results in a CT State High School Diploma
- 42 States use the GED®



GED® Test Comparison

Modules

2002

- Paper-based
- Includes 5 Modules:
 - Language Arts (Writing)
 - Language Arts (Reading)
 - Social Studies
 - Science
 - Mathematics

2014

- Computer-based
- Includes 4 Modules:
 - Reasoning through Language Arts
 - Social Studies
 - Science
 - Mathematical Reasoning



GED[®] Test Comparison

Questions

2002

- Multiple Choice
- Grid Response
 - *Mathematics*
- Essay
 - *Language Arts, Writing*

2014

- Multiple Choice
- Technology-Enhanced Items
 - *Fill-in-the-blank items*
 - *Hot-spot items*
 - *Drag-and-drop items*
 - *Drop-down selection items*
- Extended Response
 - *Reasoning through Language Arts and Social Studies*
- Short Answer
 - *Science*



GED® Test Comparison

Scoring

2002

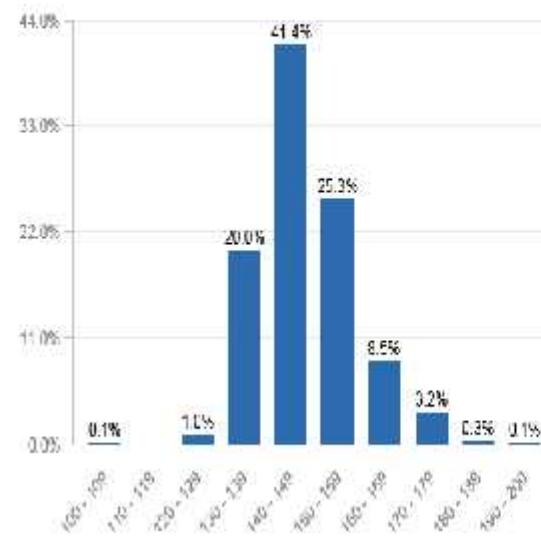
- Range: 200-800
- Passing score
 - 410 each module
 - 450 average across all five modules
- Compensatory scoring model

2014

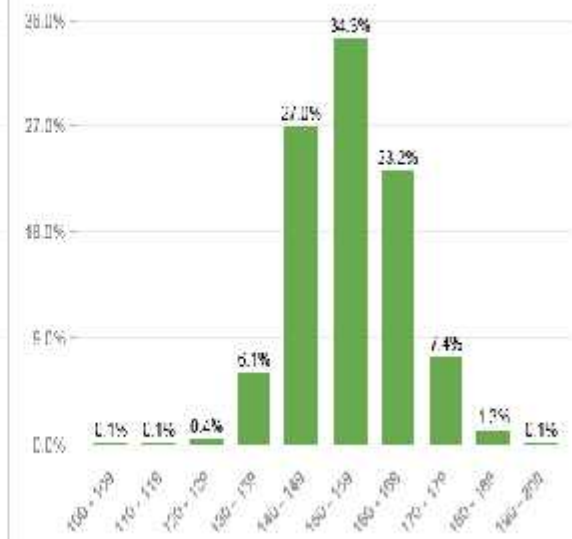
- Range: 100-200
- Two scoring levels
 - 150: passing at HS equivalency skills
 - 170: passing – “with honors” demonstrates college and career readiness
- Individual module scoring
- Same-day scoring results



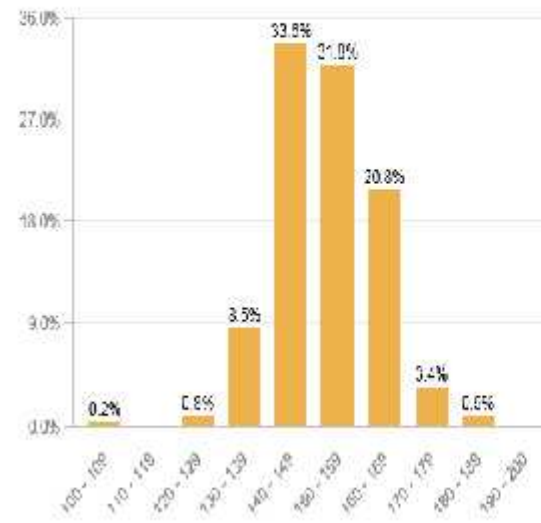
GED® Math Test Score % Distribution



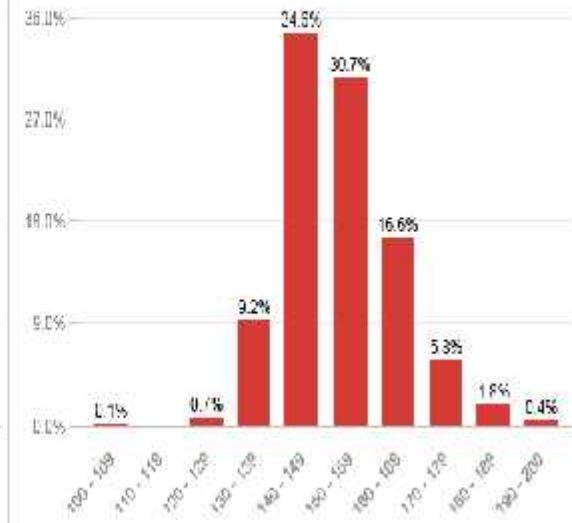
GED® RLA Test Score % Distribution



GED® Science Test Score % Distribution



GED® Social Studies Test Score % Distribution



GED[®] Test Comparison

Cost Structure

Connecticut

- Registration Fee: \$13
- Practice Test: \$6/module (\$24)
- Test: \$120 – paid by State

Nationally

- Test: \$120-\$150 – paid by student



GED® Test Comparison

CT Volume and Pass Rate

	2001 (PBT)	2002* (PBT)	2012 (PBT)	2013 (PBT)	2013 (PBT)**	2014* (CBT)**
Test Takers	7,557	4,405	5,351	6,779	4,979	904
Test Completions	7,190	3,639	4,755	5,795	4,665	594
Total Passing	4,585	2,545	2,712	3,592	2,739	280
Percent Passing	64%	70%	57%	62%	59%	47%
Percent Change in Test Completions	-	-49%	+31%	+32%	N/A	-87%

*Key: *New Test Versions; **Data does not include 1,130 tests from Department of Corrections; PBT – Paper-Based Test; CBT – Computer-Based Test*



GED® Test Comparison

Impacting Volume and Pass Rate

- First year of new test
- No carry forward from 2013
- No requirement to take or pass practice test
- No requirement for preparatory classes
- Teacher preparation
- Test is free to CT residents
- Alternative pathways toward diploma
 - AHSCDP, NEDP



Next Steps

- Establish working group with key individuals and partner organizations
 - Strategies to enhance intensity and quality of GED® instruction
 - Discuss alternative fee structures
 - Consider practice test requirements
- Increase Professional Learning Opportunities
 - Adult Training and Development Network (ATDN) GED® and CCRS Training
 - College and Career Readiness Standards in Action (CCRSIA) technical assistance

