

Academics and Equity to Accelerate Learning



Connecticut State Department of Education

@CT_Academics @EducateCT #ADSymposium21

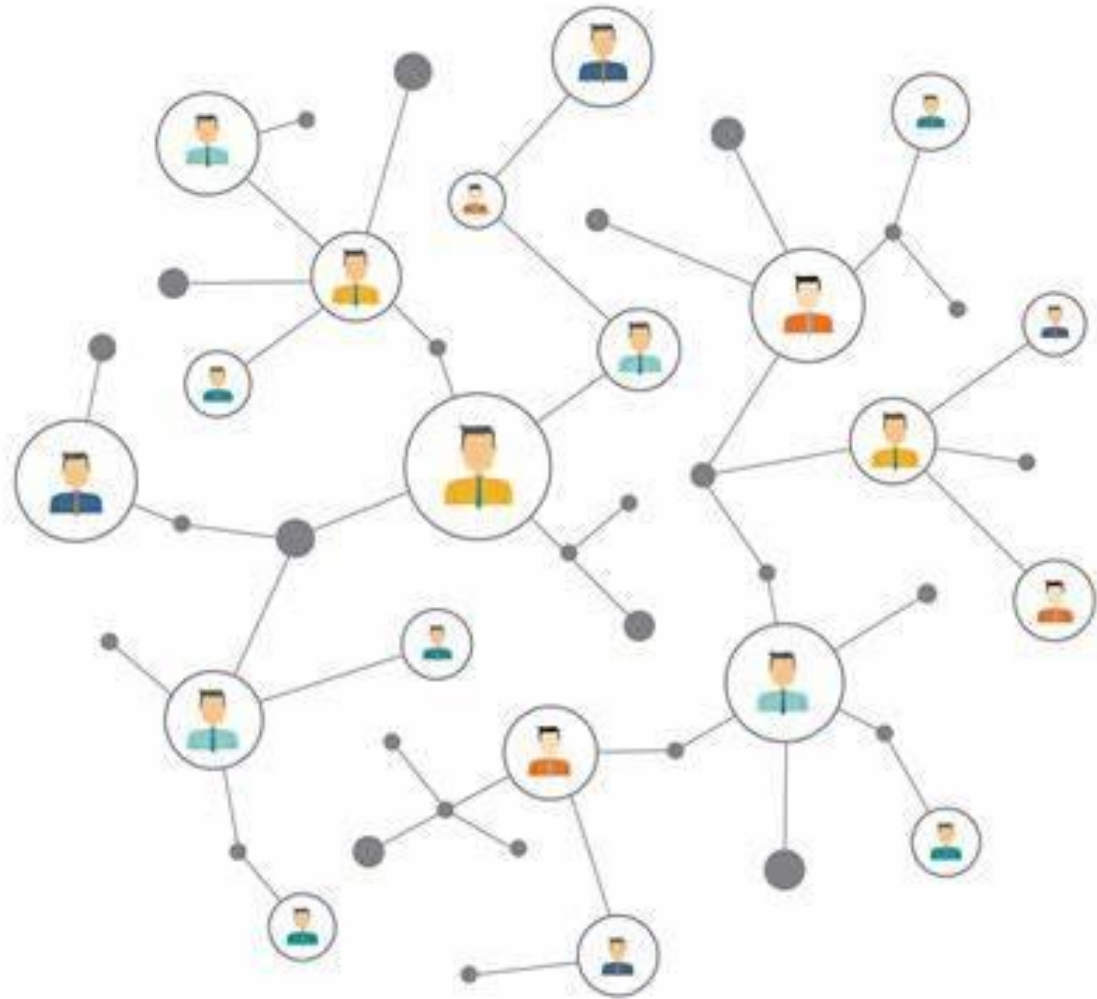
WHO: By the Numbers

Thirty-Three Towns/Cities
networking today!

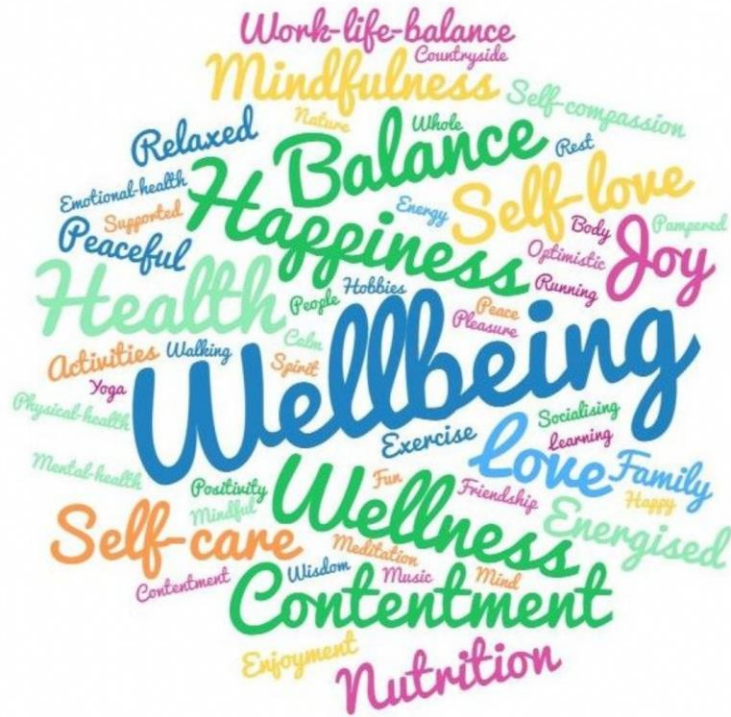
Sixty-Five Instructional
Leaders and Designers

Seven Building Leaders

One Instructional Coache



Check-In



In the chat...

I am walking into this session today feeling _____

Define

Academics

Learning and teaching resources and practices designed for knowledge and skill development focused on innovation

Educational Equity

Is the recognition that the barriers that marginalized students face are due to our actions, therefore requires us to dedicate a greater amount of resources to remove them

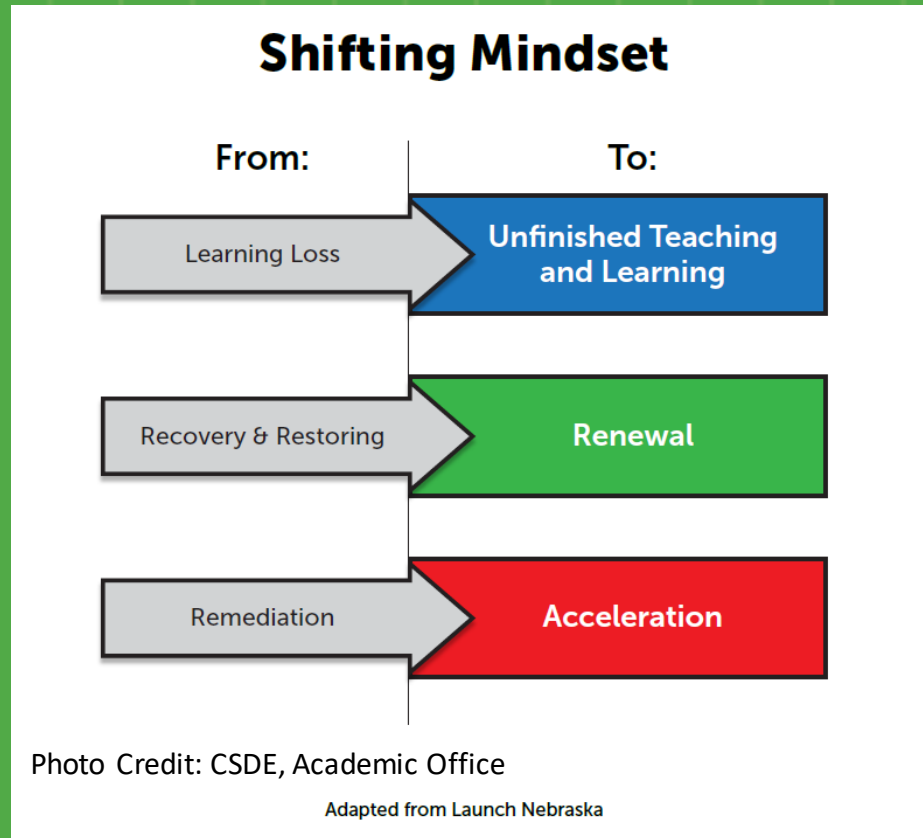
Accelerated Learning

Is an approach to diagnosing learning and planning to embed or integrate pre-requisite skills with on-grade-level content to promote equal expectations for all students and accelerate learning instead of grouping students by ability within the class. Students require consistent access to grade-level instruction and materials to accelerate their progress.



Change the Narrative

Unfinished Schooling



Strategic Acceleration Habits

Habits vs Rules



Organize to **Prioritize**

Plan & Partner

Monitor & Adapt

Feedback to Engage

Evaluate to Maintain *and sustain*

Strategic Acceleration Habits

Step	Habits for realizing each step	Guiding Questions
Prioritize	Organize a centralized or individual school-based team with internal and external stakeholders having diverse perspectives and roles to assess needs and prioritize actions	What needs to be prioritized to accelerate schooling and leverage the district strategic operating plan? To what extent is this a priority today?
Plan & Partner	Plan for the implementation of equity-based strategies with all partners	In our desired future normal, what must always be true?
Monitor & Adapt	Monitor implementation to adapt systems of support	In our desired future normal, what must always be true?
Feedback to Engage	Timely communication of actionable feedback that can engage all learners (adult and student) as partners:	In our desired future normal, what must always be true?
Evaluate to Maintain	Evaluate to understand what is working and what is not working, plan to sustain and maintain at a high level of commitment	In our desired future normal, what must always be true?



[This Photo](#) by Unknown Author is licensed under [CCBY](#)

Alignment...

- Where are you?
- Where do you want to be?



Asset Based Solutions

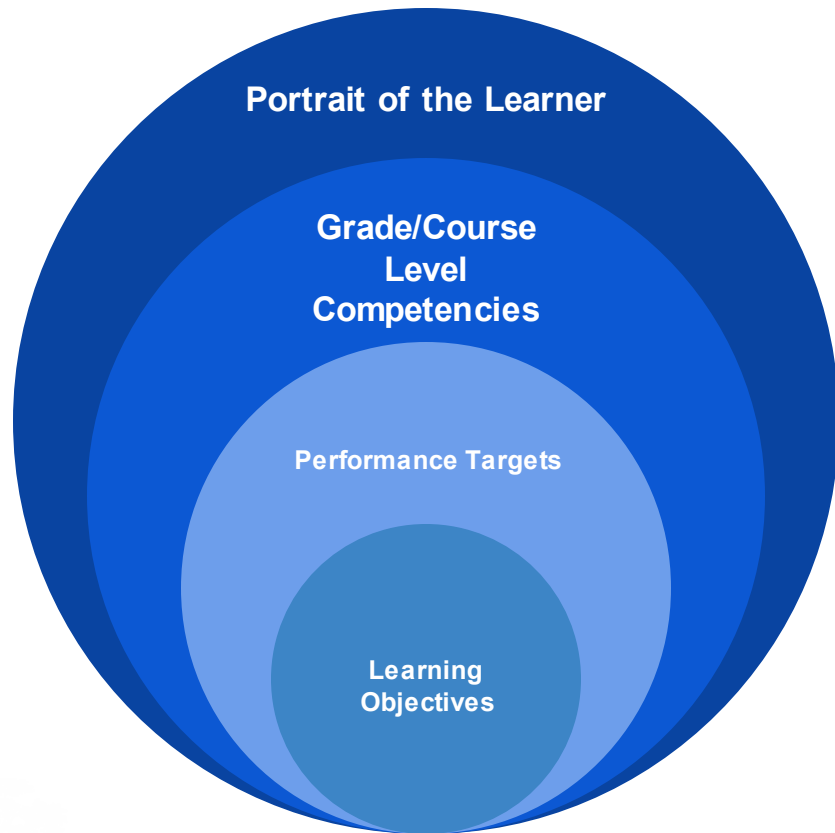


Photo Credit: CSDE, Academic Office

Assess to identify the district and state assets (resources) that have the functionality to support the outcomes, goals and learning targets.

- **Promotes Alignment**
- **Best fit for the organization**
- **Models commitment**

@CT_Academics @EducateCT #ADSymposium21

Breakout to
Socialize and
Share



Photo Credit: 200630_fciccolella_money_final.jpg

Breakout to
Socialize
and Share

Question of Practice:

How might we design a Pathway for Academics and Equity to Accelerate Schooling?

- **Acceleration Cycle**
- **Strategic Habits**
- **Aligning Solutions to Assets**
- **Aligning Strategic Operating Plan**
- **Short Term Sprints/Planning**
- **Long Term Planning**
- **Cultivating Networks**

Spark



Share in the Chat...

- *What is sparking for you right now?*
- *How might we begin conversations in our districts to implement strategic acceleration habits*

Strategic Acceleration Habits

Habits vs Rules



Organize to **Prioritize**

Plan & Partner

Monitor & Adapt

Feedback to Engage

Evaluate to Maintain *and sustain*

**Everything is
Figureoutable!**

- Marie Floreo

Opportunityisnowhere

- John Perricone

We Can Help You

If you have questions or require technical assistance, email



Irene.Parisi@ct.gov



Call: 860-713-6823



@CT_Academics

