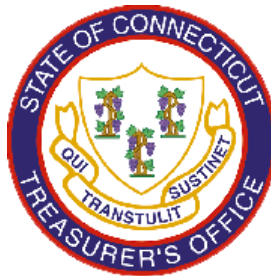


STATE OF CONNECTICUT OFFICE OF THE TREASURER

2014



SHORT-TERM INVESTMENT FUND COMPREHENSIVE ANNUAL FINANCIAL REPORT

For the fiscal year ended June 30, 2014

STATE OF CONNECTICUT

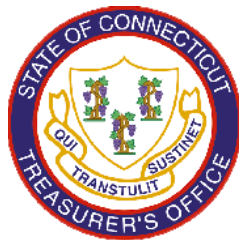
Office of the State Treasurer



The State Motto, "Qui Transtulit Sustinet" (He Who Transplanted Still Sustains), has been associated with various versions of the state seal from the creation of the Saybrook Colony Seal.

STATE OF CONNECTICUT OFFICE OF THE TREASURER

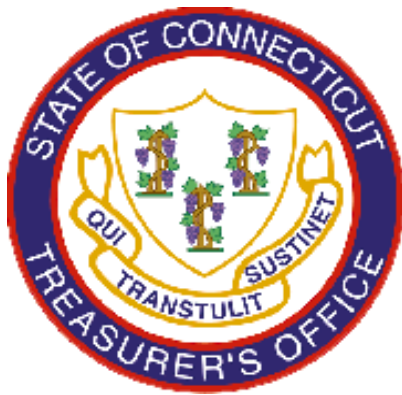
2014



SHORT-TERM INVESTMENT FUND COMPREHENSIVE ANNUAL FINANCIAL REPORT

For the fiscal year ended June 30, 2014

Prepared by: State of Connecticut
Office of the Treasurer
55 Elm Street
Hartford, CT 06106-1773



SHORT-TERM INVESTMENT FUND
COMPREHENSIVE ANNUAL FINANCIAL REPORT
FOR THE FISCAL YEAR ENDED JUNE 30, 2014

Table of Contents

INTRODUCTORY SECTION

Letter from the Treasurer	3
Management's Report	5
Certificate of Achievement For Excellence in Financial Reporting.....	6
Connecticut State Treasurer's Office	7
Fund Administration	8
List of Principal Officials	9

FINANCIAL SECTION

Report of Auditors of Public Accounts	11
Management's Discussion and Analysis	13

BASIC FINANCIAL STATEMENTS

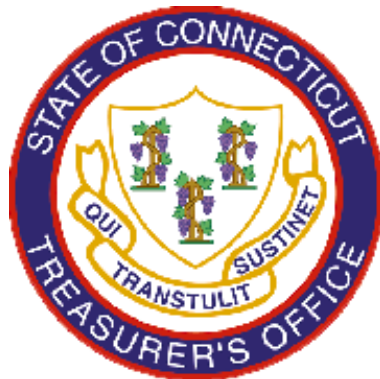
Statement of Net Position	16
Statement of Changes in Net Position	17
Notes to Financial Statements	18

INVESTMENT SECTION

Investment Results Review	25
Description of the Fund	25
Portfolio Characteristics	26
Market Review	26
Performance Summary	27
Risk Profile	27
List of Investments at June 30, 2014	29
Schedule of Management Fees at June 30, 2014	33
Schedule of Participants by Concentration at June 30, 2014	34
STIF Investment Policy	35
Glossary of Terms	41

STATISTICAL SECTION

Overview	45
Schedule of Annual Rates of Return	46
Schedule of Quarterly Rates of Return	47
Participant Units Under Management	48
Monthly Comparative Yields	49
Annual Comparative Yields	49
Changes in Net Position Last Ten Fiscal Years	50
Distributions to Participants	51



Introductory Section





DENISE L. NAPIER
TREASURER

State of Connecticut
Office of the Treasurer

CHRISTINE SHAW
DEPUTY TREASURER

December 31, 2014

To the Participants in Connecticut's Short-Term Investment Fund:

I am pleased to submit this Comprehensive Annual Financial Report for the State of Connecticut Short-Term Investment Fund ("STIF" or "Fund") for the fiscal year ended June 30, 2014. This Report reflects another year of solid performance in which we exceeded the Fund's benchmark and provided substantial incremental income for the State, local governments and, ultimately, their taxpayers.

Responsibility for both the accuracy of the data and the completeness and fairness of this report rests with management. All disclosures necessary and required to enable investors and the financial community to gain an understanding of STIF's financial activities have been included. We believe the enclosed financial statements and data are presented fairly in all material respects and are reported in a manner designed to accurately present the financial position and results of STIF's operations.

STIF was created by legislation enacted in 1972, and is a state and local government investment pool managed by the Treasurer of the State of Connecticut. Investors in the Fund include the State, state agencies and authorities, municipalities, and other political subdivisions of the State. The primary objective of the Fund is to provide the greatest possible return while, first, protecting principal and, second, providing liquidity for investors. The Fund's investment policy ensures strong asset diversification by security type and issuer, comprising high-quality, very liquid securities with a relatively short average maturity. In addition, the Fund maintains a designated surplus reserve roughly equivalent to one percent of STIF's assets to protect against security defaults or the erosion of security values due to significant unforeseen market changes. STIF's reserves are an important pillar of our investment pool, and STIF is one of the few government investment pools to maintain a reserve.

Financial Information

For Fiscal Year 2014, STIF generated a return of 0.14% and outperformed its benchmark by 12 basis points, thereby resulting in \$5.6 million in additional interest income for Connecticut governments and their taxpayers, while contributing \$651 thousand to its reserves. STIF has consistently outperformed its benchmark for over twenty five years. The overall soundness of STIF was recognized by Standard & Poor's (S&P), which affirmed and maintained STIF's AAAM rating -- the highest rating issued by S&P for money market funds and investment pools. As of June 30, 2014, STIF had \$4.2 billion in assets under management with municipalities opening thirteen new STIF accounts. The total number of municipal accounts at fiscal year end stood at 475. This level of participation reflects the continued confidence in the Fund as a solid investment vehicle for Connecticut communities.

Internal Control Structure

Management is responsible for maintaining a system of adequate internal accounting controls designed to provide reasonable assurance that transactions are (i) executed in accordance with management's general or specific authorization; and (ii) recorded as necessary to maintain accountability for assets and to permit preparation of financial statements consistent with generally accepted accounting principles. We believe the

LETTER FROM THE TREASURER

internal controls in effect during Fiscal Year 2014 adequately safeguarded STIF's assets and provided reasonable assurance regarding the proper recording of financial transactions. The concept of reasonable assurance recognizes that the cost of a control should not exceed the benefits likely to be derived and that the valuation of costs and benefits requires estimates and judgments by management.

S&P monitors STIF's portfolio on a weekly basis to ensure that it maintains the safety and liquidity investors expect. In addition, the Investment Advisory Council and the Treasurer's Cash Management Advisory Board periodically review STIF's portfolio and performance throughout the year.

Independent Audit

The State of Connecticut's independent Auditors of Public Accounts conducted an annual audit of this Comprehensive Annual Financial Report in accordance with generally accepted auditing standards. The Auditors' report on the basic financial statements is included in the Financial Section of this report.

Management Discussion and Analysis

The Government Accounting Standards Board requires that STIF provide a narrative introduction, overview and analysis to accompany the basic financial statements in the form of a Management's Discussion and Analysis (MD&A). This letter of transmittal and overview is designed to complement the MD&A and should be read in conjunction with it. The MD&A can be found in the Financial Section immediately following the report of the Auditors.

Awards

The Government Finance Officers Association of the United States and Canada (GFOA) awarded the Fund a Certificate of Achievement for Excellence in Financial Reporting for its Comprehensive Annual Financial Report for the fiscal year ended June 30, 2013. The Certificate is a prestigious national award recognizing conformance with the highest standards for preparation of state and local government financial reports.

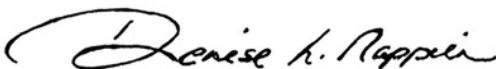
Additional Information

A section of the Treasury website is dedicated to STIF investors, and features helpful information such as the current daily rate, monthly portfolio listings, historical data, and links to annual and quarterly financial reports. The site also contains forms, instructions and an investor's guide which are designed to help investors better understand the products and services offered by the Treasury including Grant Express, Debt Service Express, and Clean Water Fund Express. The STIF site and copies of this report may be accessed through the Treasury's website, (www.ott.ct.gov).

As part of the Treasury's continuing focus on transparency, communication and information, we develop the Monthly Manager Report, which is available on the Treasurer's website (http://www.ott.ct.gov/cashmanagement_st_investorcommunications.html). This report, as well as the quarterly reports and the monthly list of holdings posted on-line, are designed to give investors information regarding fund characteristics and returns. Historical reports can be found under Financial Reports; and STIF Express -- a secure online system -- allows investors to view account balances and transaction histories as well as initiate deposits and withdrawals.

We appreciate your participation in STIF, and hope that this Comprehensive Annual Financial Report will prove both informative and useful. Questions concerning any of the information contained in this report or requests for additional financial information should be addressed to the Office of the Treasurer, 55 Elm Street, Hartford, Connecticut 06106-1773, or by calling (860) 702-3000.

Sincerely,



Denise L. Napier
Treasurer
State of Connecticut



DENISE L. NAPIER
TREASURER

State of Connecticut
Office of the Treasurer

CHRISTINE SHAW
DEPUTY TREASURER

December 31, 2014

This Comprehensive Annual Financial Report was prepared by the Office of the Treasurer, which manages the assets of the Short-Term Investment Fund ("STIF"). As of June 30, 2014, Bank of New York Mellon served as custodian for STIF. All investments are made in instruments authorized by Connecticut General Statutes Sections 3-27c through 3-27f.

The Office of the Treasurer is responsible for the accuracy of the data contained herein, the completeness and fairness of the presentation, and all disclosures. We present the STIF's financial statements as being accurate in all material respects and prepared in conformity with generally accepted accounting principles as a "2a7-like" pool. Such financial statements are audited annually by the State Auditors of Public Accounts.

To carry out this responsibility, the Office of the Treasurer maintains financial policies, procedures, accounting systems and internal controls which management believes provide reasonable, but not absolute, assurance that accurate financial records are maintained and investments and other assets are safeguarded.

It is our belief that the contents of this Comprehensive Annual Financial Report make evident the Treasurer's commitment to the safe custody and conscientious stewardship of the Short-Term Investment Fund.

In management's opinion, the internal control structures of the Office of the Treasurer and of STIF are adequate to ensure that the financial information in this report fairly presents STIF's operational and financial condition.

Sincerely,

Christine Shaw
Deputy Treasurer
State of Connecticut



Government Finance Officers Association

Certificate of
Achievement
for Excellence
in Financial
Reporting

Presented to

**Connecticut State
Treasurer's Short-Term Investment
Fund**

For its Comprehensive Annual
Financial Report
for the Fiscal Year Ended

June 30, 2013

A handwritten signature in black ink, appearing to read 'Jeffrey R. Emer', is written in a cursive style.

Executive Director/CEO

Mission Statement

To serve as the premier State Treasurer’s Office in the nation through effective management of public resources, high standards of professionalism and integrity, and expansion of opportunity for the citizens and businesses of Connecticut.

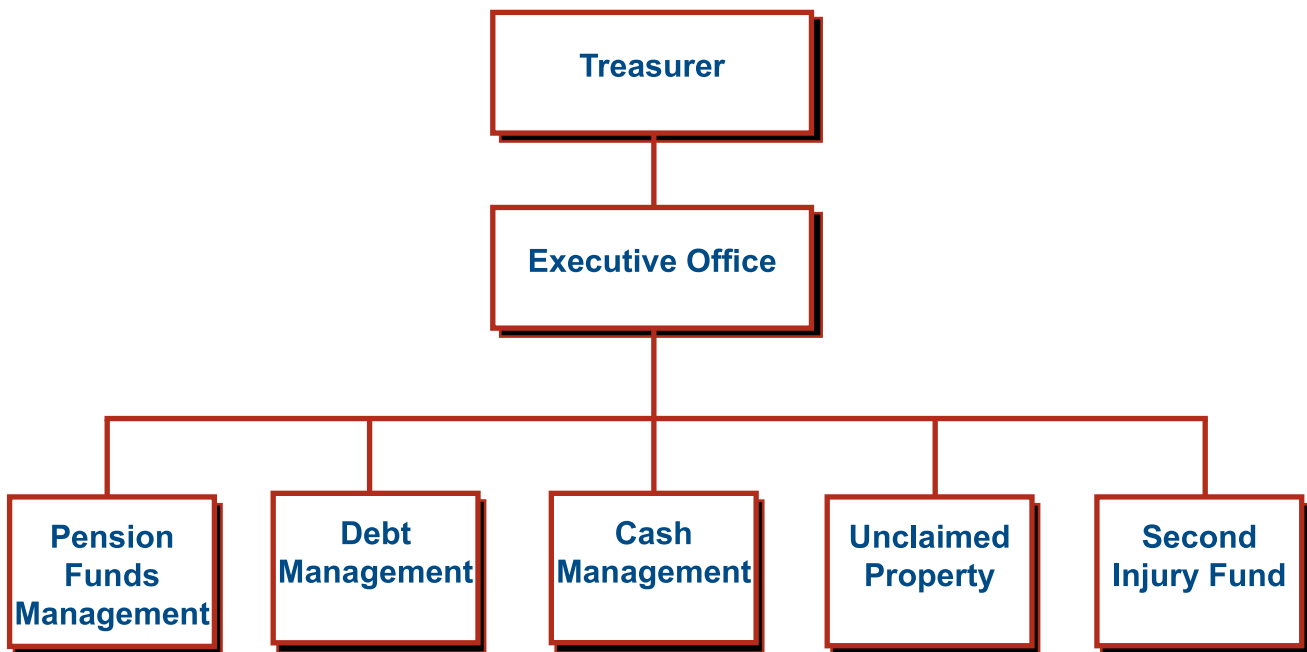
Constitutional and Statutory Responsibilities

The Office of the Treasurer was established following the adoption of the fundamental orders of Connecticut in 1638. The Treasurer shall receive all funds belonging to the State and disburse the same only as may be directed by law, as described in Article Fourth, Section 22 of the Connecticut Constitution and in Title 3 of the Connecticut General Statutes.

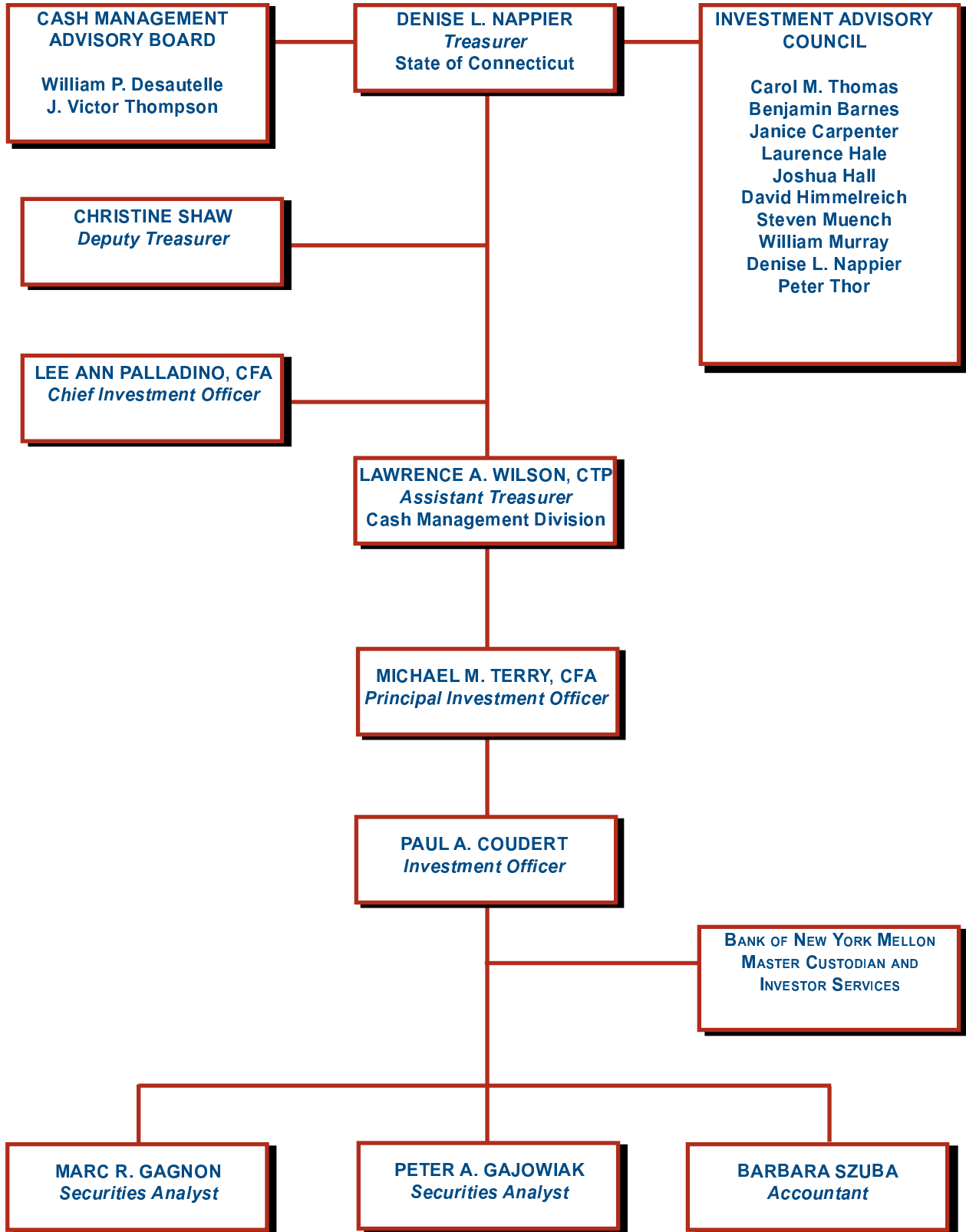
The Treasurer, as Chief Elected Financial Officer for the State, oversees the prudent preservation and management of State funds, including the investment of a \$29.4 billion portfolio of pension assets, \$4.2 billion in total State and local short-term, and other investments, and \$2.6 billion of assets in the Connecticut Higher Education Trust. The Treasurer maintains an accurate account of all funds through sophisticated security measures and procedures.

Public Service

The Office of the Treasurer includes an Executive Office as well as five divisions, each with specific responsibilities: Pension Funds Management, Cash Management, Debt Management, Unclaimed Property, and the Second Injury Fund.



SHORT-TERM INVESTMENT FUND ADMINISTRATION



As of June 30, 2014

LIST OF PRINCIPAL OFFICIALS

SHORT-TERM INVESTMENT FUND

55 Elm Street
6th Floor
Hartford, CT. 06106-2773
Telephone: (860) 702-3118
Facsimile: (860) 702-3048
World Wide Web:
www.ott.ct.gov

Treasurer, State of Connecticut
DENISE L. NAPPIER (860) 702-3001

Deputy Treasurer, State of Connecticut
CHRISTINE SHAW (860) 702-3211

Assistant Treasurer, Cash Management
LAWRENCE A. WILSON, CTP (860) 702-3126

STIF INVESTMENT MANAGEMENT

Principal Investment Officer
MICHAEL M. TERRY, CFA (860) 702-3255

Investment Officer
PAUL A. COUDERT (860) 702-3254

Securities Analyst
MARC R. GAGNON (860) 702-3158

Securities Analyst
PETER A. GAJOWIAK (860) 702-3124

STIF INVESTOR SERVICES
Accountant
BARBARA SZUBA (860) 702-3118

CUSTODIAN AND INVESTOR SERVICES
BANK OF NEW YORK MELLON

As of December 31, 2014



Financial

Section



STATE OF CONNECTICUT



AUDITORS OF PUBLIC ACCOUNTS

STATE CAPITOL

210 CAPITOL AVENUE

HARTFORD, CONNECTICUT 06106-1559

JOHN C. GERAGOSIAN

ROBERT M. WARD

INDEPENDENT AUDITORS' REPORT

Governor Dannel P. Malloy
Members of the General Assembly:

Report on the Financial Statements

We have audited the accompanying financial statements of the Short-Term Investment Fund, which comprise the statement of net position as of June 30, 2014, the statements of changes in net position for the fiscal years ended June 30, 2014 and 2013, and the related notes to the financial statements.

Management's Responsibility for the Financial Statements

Management is responsible for the preparation and fair presentation of these financial statements in conformity with U.S. generally accepted accounting principles; this includes the design, implementation, and maintenance of internal control relevant to the preparation and fair presentation of financial statements that are free from material misstatement, whether due to fraud or error.

Auditors' Responsibility

Our responsibility is to express an opinion on these financial statements based on our audit. We conducted our audit in accordance with auditing standards generally accepted in the United States and the standards applicable to financial audits contained in *Government Auditing Standards*, issued by the Comptroller General of the United States. Those standards require that we plan and perform the audit to obtain reasonable assurance about whether the financial statements are free from material misstatement.

An audit involves performing procedures to obtain audit evidence about the amounts and disclosures in the financial statements. The procedures selected depend on the auditor's judgment, including the assessment of the risks of material misstatement of the financial statements, whether due to fraud or error. In making those risk assessments, the auditor considers internal control relevant to the entity's preparation and fair presentation of the financial statements in order to design audit procedures that are appropriate in the circumstances but not for the purpose of expressing an opinion on the effectiveness of the entity's internal control. Accordingly we express no such opinion. An audit also includes evaluating the appropriateness of accounting policies used and the reasonableness of significant accounting estimates made by management, as well as evaluating the overall presentation of the financial statements.

We believe that the audit evidence we have obtained is sufficient and appropriate to provide a basis for our audit opinion.

Opinion

In our opinion, the financial statements referred to above present fairly, in all material respects, the financial position of the Short-Term Investment Fund as of June 30, 2014, and the statements of changes in financial position for the fiscal years ended June 30, 2014 and 2013, in conformity with accounting principles generally accepted in the United States of America.

Other Matters

Required Supplementary Information

Management's Discussion and Analysis, although not a part of the basic financial statements, is required by the Governmental Accounting Standards Board who considers it to be an essential part of financial reporting for placing the basic financial statements in an appropriate operational, economic, or historical context. We have applied certain limited procedures to the required supplementary information in accordance with auditing standards generally accepted in the United States of America, which consisted of inquiries of management about the methods of preparing the information and comparing the information for consistency with management's responses to our inquiries, the basic financial statements, and other knowledge we obtained during our audit of the basic financial statements. We do not express an opinion or provide any assurance on the information because the limited procedures do not provide us with sufficient evidence to express an opinion or provide any assurance.

Supplementary Information

Our audit was made for the purpose of forming an opinion on the financial statements of the Short-Term Investment Fund as a whole. The list of investments at June 30, 2014 is presented for purposes of additional analysis and is not a required part of the financial statements of the Short-Term Investment Fund. Such information is the responsibility of management and was derived from and relates directly to the underlying accounting and other records used to prepare the financial statements. The information has been subjected to the auditing procedures applied in the audit of the financial statements of the Short-Term Investment Fund and certain additional procedures, including comparing and reconciling such information directly to the underlying accounting and other records used to prepare the financial statements or to the financial statements themselves, and other additional procedures in accordance with auditing standards generally accepted in the United States of America. In our opinion, the information is presented fairly in all material respects in relation to the financial statements taken as a whole.

Other Information

The introductory, investment and statistical sections, includes information that is presented for purposes of additional analysis and is not a required part of the basic financial statements. Such information, other than the list of investments at June 30, 2014 specifically noted within the investment section, has not been subjected to the auditing procedures applied in the audit of the basic financial statement and, accordingly, we do not express an opinion or provide any assurance on it.

Other Reporting Required by Government Auditing Standards

In accordance with *Government Auditing Standards*, we have also issued our report dated December 31, 2014 on our consideration of the State Treasury's internal control over financial reporting and on our tests of its compliance with certain provisions of laws, regulations, contracts and grant agreements and other matters. The purpose of that report is to describe the scope of our testing of internal control over financial reporting and compliance and the results of that testing, and not to provide an opinion on the internal control over financial reporting or on compliance. That report will be issued under separate cover in the *Independent Auditors' Report on Internal Control Over Financial Reporting and on Compliance and Other Matters Based on an Audit of Financial Statements Performed in Accordance with Government Auditing Standards for the Fiscal Year Ended June 30, 2014*, and is an integral part of an audit performed in accordance with *Government Auditing Standards* and should be considered in assessing the results of our audit.



John C. Geragosian
Auditor of Public Accounts



Robert M. Ward
Auditor of Public Accounts

December 31, 2014
State Capitol
Hartford, Connecticut

MANAGEMENT'S DISCUSSION AND ANALYSIS

This section presents Management's Discussion and Analysis (MD&A) of the Comprehensive Annual Financial Report (CAFR) of the State of Connecticut's Office of the Treasurer Short-Term Investment Fund ("STIF") financial position and performance for the fiscal year ended June 30, 2014. It is presented as a narrative overview and analysis. Management of the State of Connecticut's Office of the Treasurer encourages readers to review it in conjunction with the transmittal letter included in the Introductory Section at the front of this report and the financial statements in the Financial Section that follow.

The Short-Term Investment Fund serves as an investment vehicle for the operating cash of the State Treasury, State agencies and authorities, municipalities, and other political subdivisions of the State. STIF is a AAAm rated investment pool of high-quality, short-term money market instruments and is managed for the sole benefit of the participants. All income is distributed monthly after deducting operating costs of approximately four basis points and an allocation to the Fund's Designated Surplus Reserve of 10 basis points (generally until the reserve reaches one percent of fund assets).

The STIF financial statements reported by the Treasurer's Office for which the Treasurer has fiduciary responsibility for the investment thereof begin on page 17 and provide detailed information about the Fund.

FINANCIAL HIGHLIGHTS Condensed Financial Information

Short-Term Investment Fund Net Position and Changes in Net Position

The net position in the Short-Term Investment Fund at the close of Fiscal Year 2014 was approximately \$4.2 billion, versus \$4.5 billion the previous year.

The net position in the Short-Term Investment Fund at the close of Fiscal Year 2013 was approximately \$4.5 billion, versus \$4.9 billion the previous year.

Operating Income - General financial market conditions produced an annual total return of 0.14%, net of operating expenses and allocations to Fund reserves in fiscal 2014, slightly lower than the annual total return in fiscal 2013. The annual total return exceeded that achieved by its benchmark, which equaled .02%, by 12 basis points, resulting in \$5.6 million in additional interest income for Connecticut governments and their taxpayers while also adding \$651 thousand to its reserves. During Fiscal Year 2014, the Federal Reserve maintained its Federal Funds target range at 0.00 – 0.25 percent where it has held since December 2008. During the fiscal year the Fund's weighted average maturity fluctuated from a low of 31 days to a high of 45 days.

General financial market conditions produced an annual total return of 0.16%, net of operating expenses and allocations to Fund reserves in fiscal 2013, the same annual total return in fiscal 2012, net of operating expenses and allocations to Fund reserves in the previous fiscal year. The annual total return exceeded that achieved by its benchmark, which equaled .05%, by 11 basis points, resulting in \$5.3 million in additional interest income for Connecticut governments and their taxpayers while also adding \$2.3 million to its reserves. During Fiscal Year 2013, the Federal Reserve maintained its Federal Funds target range at 0.00 – 0.25 percent where it has held since December 2008. During the fiscal year the Fund's weighted average maturity fluctuated from a low of 26 days to a high of 44 days.

Designated Surplus Reserve - In order to support the creditworthiness of the Fund and provide some additional protection against potential credit losses, a designated surplus reserve (reserve) is maintained. The amount transferred to the reserve is equal to the annualized rate of 0.1 percent of the end-of-day investment balances. Generally, no transfer is made if the reserve account is equal to or greater than 1.0 percent of the daily investment balance. During the fiscal year, \$651 thousand was transferred into the reserve, bringing the total reserve to \$50.3 million.

MANAGEMENT'S DISCUSSION AND ANALYSIS

Table 1 - Net Position

Assets	2014	Increase (Decrease)	2013	Increase (Decrease)	2012
Investments in Securities, at amortized cost	\$4,208,753,819	\$(263,468,130)	\$4,472,221,949	\$(419,718,809)	\$4,891,940,758
Receivables and Other	3,111,088	(2,094,566)	5,205,654	3,080,458	2,125,196
Total Assets	4,211,864,907	(265,562,696)	4,477,427,603	(416,638,351)	4,894,065,954
Liabilities	(530,908)	175,248	(706,156)	(212,141)	(494,015)
Net Position	<u>\$4,211,333,999</u>	<u>\$(265,387,448)</u>	<u>\$4,476,721,447</u>	<u>\$(416,850,492)</u>	<u>\$4,893,571,939</u>

Table 2 - Changes in Net Position

Assets	2014	Increase (Decrease)	2013	Increase (Decrease)	2012
Net Interest Income	\$8,943,345	\$(2,175,743)	\$11,119,088	\$(1,546,182)	\$12,665,270
Net Realized Gains	106,047	102,352	3,695	(152,129)	155,824
Net Increase Resulting from Operations	9,049,392	(2,073,391)	11,122,783	(1,698,311)	12,821,094
Purchase of Units by Participants	<u>11,718,981,266</u>	<u>531,591,700</u>	<u>11,187,389,566</u>	<u>385,490,381</u>	<u>10,801,899,185</u>
Total Additions	11,728,030,658	529,518,309	11,198,512,349	383,792,070	10,814,720,279
Deductions					
Distribution of Income to Participants	6,299,050	(1,019,837)	7,318,887	(238,885)	7,557,772
Redemption of Units by Participants	11,985,125,718	378,554,228	11,606,571,490	1,200,055,244	10,406,516,246
Operating Expenses	1,993,338	520,874	1,472,464	171,965	1,300,499
Total Deductions	<u>11,993,418,106</u>	<u>378,055,265</u>	<u>11,615,362,841</u>	<u>1,199,988,324</u>	<u>10,415,374,517</u>
Change in Net Position	(265,387,448)	151,463,044	(416,850,492)	(816,196,254)	399,345,762
Net position – beginning of year	4,476,721,447	(416,850,492)	4,893,571,939	399,345,762	4,494,226,177
Net position – end of year	<u>\$4,211,333,999</u>	<u>\$(265,387,448)</u>	<u>\$4,476,721,447</u>	<u>\$(416,850,492)</u>	<u>\$4,893,571,939</u>

OVERVIEW OF THE FINANCIAL STATEMENTS

This discussion and analysis is an introduction to the Office of the Treasurer's Short-Term Investment Fund basic financial statements, which are comprised of: 1) Statement of Net Position, 2) Statement of Changes in Net Position and 3) Notes to the Financial Statements.

The Statement of Net Position and the Statement of Changes in Net Position are two financial statements that report information about the Short-Term Investment Fund. These statements include all assets and liabilities using the accrual basis of accounting. The current year's revenues and expenses are taken into account regardless of when cash is received or paid.

The Statement of Net Position presents all of the Short-Term Investment Fund's assets and liabilities, with the difference between the two reported as "net position".

The Statement of Changes in Net Position presents information showing how the Short-Term Investment Fund's net assets changed during the most recent fiscal year. All changes in net assets are reported as soon as the underlying events giving rise to the change occur, regardless of the timing of related cash flows.

The Notes to the Financial Statements provide additional information that is essential to a full understanding of the data provided in the Short-Term Investment Fund's financial statements.

ECONOMIC CONDITIONS AND OUTLOOK

Domestic growth, as measured by Gross Domestic Product (GDP) increased during the fiscal year, averaging a rate of 2.6 percent, up 0.8 percentage points from fiscal year 2013. As the economy grew, nearly 2.3 million people were added to payrolls, helping the unemployment rate fall to 6.1 percent, down from 7.5 percent at the end of fiscal year 2013. Domestic inflation averaged 1.6 percent during the fiscal year, down from the 1.7 percent in fiscal year 2013.

MANAGEMENT'S DISCUSSION AND ANALYSIS

Due to the improvement in the outlook for the labor market and the underlying strength of the broader economy, the FOMC concluded its asset purchase program at its October 2014 meeting. The Committee also stated that based on its current assessment, it is likely that the 0.00 to 0.25 percent target range for the federal funds rate will be maintained for a considerable time following the end of the asset purchase program.

Connecticut's unemployment rate has continued to decline from a high of 9.5 percent in October 2010 to 6.4 percent in October 2014, compared to the national unemployment rate of 5.8 percent. The State Comptroller reported that the State's General Fund ended the 2014 Fiscal Year with a pre-audited \$248 million surplus which will be deposited into the Budget Reserve Fund, and that Fiscal Year 2015 is projecting a potential \$44.8 million deficit due to a \$59.1 million reduction in revenue, mainly within the federal grants category, partly offset by a \$14 million decrease in net spending after accounting for \$54.7 million in planned recisions by the Governor.

CONTACTING THE OFFICE OF THE TREASURER

This financial report is designed to provide a general overview of the Office of the Treasurer's finances and to show the Office's accountability for the money it receives. Questions about this report or requests for additional information should be addressed to:

Connecticut State Treasury
55 Elm Street
Hartford, CT 06106-1773
Telephone (860) 702-3000
www.ott.ct.gov

CONNECTICUT STATE TREASURER'S SHORT-TERM INVESTMENT FUND

STATEMENT OF NET POSITION
JUNE 30, 2014

	<u>June 30, 2014</u>
ASSETS	
Investment in Securities, at Amortized Cost (Note 7)	\$ 4,208,753,819
Accrued Interest and Other Receivables	2,811,699
Prepaid Assets	299,389
Total Assets	<u>\$ 4,211,864,907</u>
LIABILITIES	
Distribution Payable	530,908
Total Liabilities	<u>\$ 530,908</u>
NET POSITION HELD IN TRUST FOR PARTICIPANTS (includes reserve)	<u>\$ 4,211,333,999</u>

See accompanying Notes to the Financial Statements.

CONNECTICUT STATE TREASURER'S SHORT-TERM INVESTMENT FUND

**STATEMENT OF CHANGES IN NET POSITION
FOR THE FISCAL YEARS ENDED JUNE 30, 2014 AND JUNE 30, 2013**

	<u>2014</u>	<u>2013</u>
ADDITIONS		
Operations		
Interest Income	\$ 8,943,345	\$ 11,119,088
Net Investment Income	8,943,345	11,119,088
Net Realized Gains	<u>106,047</u>	<u>3,695</u>
Net Increase Resulting from Operations	9,049,392	11,122,783
Share Transactions at Fair Value of \$1.00 per Share		
Purchase of Units	<u>11,718,981,266</u>	<u>11,187,389,566</u>
TOTAL ADDITIONS	<u>11,728,030,658</u>	<u>11,198,512,349</u>
 DEDUCTIONS		
Distribution to Participants (Notes 2 & 6)		
Distributions to Participants*	<u>(6,299,050)</u>	<u>(7,318,887)</u>
Total Distributions Paid and Payable	(6,299,050)	(7,318,887)
Share Transactions at Fair Value of \$1.00 per Share		
Redemption of Units	(11,985,125,718)	(11,606,571,490)
Operations		
Operating Expenses	<u>(1,993,338)</u>	<u>(1,472,464)</u>
TOTAL DEDUCTIONS	<u>(11,993,418,106)</u>	<u>(11,615,362,841)</u>
<i>* Net of designated reserve transfer contributions and expenses.</i>		
 CHANGE IN NET POSITION	(265,387,448)	(416,850,492)
 Net POSITION Held in Trust for Participants		
Beginning of Year	4,476,721,447	4,893,571,939
End of Year	<u>\$ 4,211,333,999</u>	<u>\$ 4,476,721,447</u>

See accompanying Notes to the Financial Statements.

NOTES TO FINANCIAL STATEMENTS

NOTE 1: INTRODUCTION AND BASIS OF PRESENTATION

The Short-Term Investment Fund ("STIF" or the "Fund") is a money market investment pool managed by the Treasurer of the State of Connecticut. Section 3-27 of the Connecticut General Statutes (CGS) created STIF. Pursuant to CGS 3-27a - 3-27f, the State, municipal entities, and political subdivisions of the State are eligible to invest in the Fund. Securities in which the State Treasurer is authorized to invest monies of STIF include United States government and agency obligations, certificates of deposit, commercial paper, corporate bonds, saving accounts, bankers' acceptances, repurchase agreements, and asset-backed securities. STIF is authorized to issue an unlimited number of units.

For State of Connecticut financial reporting purposes, STIF is considered to be a mixed investment pool – a pool having external and internal portions. The internal portion (i.e., the portion that belongs to investors that are part of the State's financial reporting entity) is not displayed in the State's basic financial statements. Instead, each fund type's investment in STIF is reported as "cash equivalents" in the statement of net assets. The external portion (i.e., the portion that belongs to investors which are not part of the State's financial reporting entity) is recorded in an investment trust fund in the basic financial statements.

The Fund is considered a "2a7-like" pool and, as such, reports its investments at amortized cost (which approximates fair value). A 2a7-like pool is not necessarily registered with the Securities and Exchange Commission (SEC) as an investment company, but nevertheless has a policy that is consistent with the SEC's Rule 2a7 of the Investment Company Act of 1940 that allows money market mutual funds to use amortized cost to report net assets.

Related Party Transactions.

STIF had no related party transactions during the fiscal year with the State of Connecticut and its component units including leasing arrangements, the performance of administrative services and the execution of securities transactions.

NOTE 2: SUMMARY OF SIGNIFICANT ACCOUNTING POLICIES***Financial Reporting Entity.***

The Fund is a Fiduciary Investment Trust Fund. A fiduciary fund is used to account for governmental activities that are similar to those found in the private sector where the determination of net income is necessary or useful to sound financial administration. The generally accepted accounting principles ("GAAP") used for fiduciary funds are generally those applicable to similar businesses in the private sector. The Fund uses the accrual basis of accounting.

Security Valuation of Financial Instruments.

The assets of the Fund are carried at amortized cost (which approximates fair value). All premiums and discounts on securities are amortized or accreted on a straight line basis.

Security Transactions.

Purchases and sales of investments are recorded on a trade date basis. Gains and losses on investments are realized at the time of the sales and are calculated on the basis of an identified block or blocks of securities having an identified amortized cost. Bond cost is determined by identified lot.

Interest Income.

Interest income, which includes amortization of premiums and accretion of discounts, is accrued as earned.

Expenses.

Operating and interest expenses are accounted for on an accrual basis.

Fiscal Year.

The fiscal year of STIF ends on June 30.

NOTES TO FINANCIAL STATEMENTS (Continued)***Distributions to Investors.***

Distributions to investors are earned on units outstanding from date of purchase to date of redemption. Income is calculated daily based upon the actual earnings of the Fund net of administrative expenses and, if applicable, an allocation to the Designated Surplus Reserve. Distributions are paid monthly within two business days of the end of the month, and are based upon actual number of days in a year. Shares are sold and redeemed at a constant \$1.00 net asset value per share, which is consistent with the per share net asset value of the Fund, excluding the Designated Surplus Reserve.

Designated Surplus Reserve.

While STIF is managed prudently to protect against losses from credit and market changes, the Fund is not insured or guaranteed by any government. Therefore, the maintenance of capital cannot be fully assured. In order to provide some protection to the shareholders of STIF from potential credit and market risks, the Treasurer has designated that a portion of each day's net earnings be transferred to the Designated Surplus Reserve (Reserve). Such amounts are restricted in nature and are not available for current distribution to shareholders. The amount transferred daily to the Designated Surplus Reserve is equal to 0.1 percent of end of day investment balance divided by the actual number of days in the year until the reserve account is equal to or greater than 1.0 percent of the daily investment balance. If net losses significant to the aggregate portfolio are realized, the Treasurer is authorized to transfer funds from the Reserve to Participants with Units Outstanding.

As of June 30, 2014, the balance in the Designated Surplus Reserve was \$50,343,167 which reflects \$651 thousand in contributions during the year.

Estimates.

The preparation of the financial statements in conformity with GAAP requires management to make estimates and assumptions that affect the reported amounts of assets and liabilities and disclosure of contingent assets and liabilities in the financial statements as well as the reported amounts of revenues and expenses during the reporting period. Actual results could differ from those estimates.

NOTE 3: DEPOSIT AND INVESTMENT DISCLOSURES

A formal investment policy (as adopted August 21, 1996, revised June 16, 2008 and April 17, 2009) specifies policies and guidelines that provide for the systematic management of STIF and prudent and productive investment of funds. STIF's investment practice is to invest all cash balances; as such, there was no uninvested cash at June 30, 2014. All securities of STIF are registered under the Bank of New York Mellon nominee name, MAC & Co.

Custodial Credit Risk – Deposits

The custodial credit risk for deposits is the risk that in the event of a bank failure, the STIF's deposits may not be recovered. The STIF follows policy parameters that limit deposits in any one entity to a maximum of ten percent of total assets with a ten-business-day cure period. Further, the certificates of deposits must be issued from commercial banks whose short-term debt is rated at least A-1 by Standard and Poor's and F-1 by Fitch and whose long-term debt is rated at least A- and its issuer rating is at least "C", or backed by a letter of credit issued by a Federal Home Loan bank.

Deposits in banks are insured up to \$250,000 (as of June 30, 2014), any amount above this limit is considered uninsured. Additionally, state banking regulation requires all Connecticut public depositories to segregate collateral against public deposits in an amount equal to at least ten percent of the outstanding deposit. As of fiscal year-end, deposit instruments in the Short-Term Investment Fund totaled \$1,630,000,000. Of that amount, \$750,500,000 was exposed to custodial credit risk representing the portion that was uninsured, uncollateralized or not backed by a letter of credit. Each of the deposit instruments had put options that would allow STIF to redeem the investments within one to seven business days.

CONNECTICUT STATE TREASURER'S SHORT-TERM INVESTMENT FUND

NOTES TO FINANCIAL STATEMENTS (Continued)

Uninsured Bank Amounts

Bank	Amount	Uninsured
BB&T	\$300,000,000	\$299,750,000
JP Morgan	390,000,000	-
Peoples	150,000,000	-
Santander	200,000,000	-
TD Bank	390,000,000	350,750,000
Webster	100,000,000	-
Svenska Handelsbanken	<u>100,000,000</u>	<u>100,000,000</u>
Total	\$1,630,000,000	\$750,500,000

Interest Rate Risk – Investments

Interest rate risk is the risk that changes in the general level of interest rates will adversely affect the fair value of an investment. The STIF's policy for managing interest rate risk is to limit investments to a very short weighted average maturity, not to exceed 90-days, and to comply with Standard and Poor's requirement that the weighted average maturity not exceed 60 days. The weighted-average maturity is calculated daily, and reported to Standard and Poor's weekly to ensure compliance. As of June 30, 2014 the weighted average maturity of the STIF was 40 days. The breakdown of the STIF's maturity profile is outlined below.

Investments	Amortized Cost	Investment Maturity in Years	
		Less than One	One - Five
Deposit Instruments			
Fixed	\$1,630,000,000	\$1,630,000,000	\$ -
Federal Agency Securities			
Fixed	924,288,950	899,211,978	25,076,973
Floaters	667,170,613	667,170,612	-
Bank Commercial Paper	325,000,000	325,000,000	-
US Government (FDIC) Guaranteed and Insured Securities	128,656,810	128,656,810	-
Government Money Market Funds	283,637,446	283,637,446	-
Repurchase Agreements	250,000,000	250,000,000	-
Total	<u>\$4,208,753,819</u>	<u>\$4,183,676,846</u>	<u>\$25,076,973</u>

Additionally, STIF is allowed by policy to invest in floating-rate debt securities. Further, investment in floating-rate securities with maturities greater than two years is limited to no more than 20 percent of the overall portfolio. For purposes of the weighted average maturity calculation and classification in the chart above, variable-rate securities are calculated using their interest rate reset dates. Because these securities reset frequently to prevailing market rates, interest rate risk is substantially reduced. As of fiscal year-end, the STIF portfolio held \$667 million in variable rate securities.

Credit Risk of Debt Securities

Credit risk is the risk that an issuer or other counterparty to an investment will not fulfill its obligations. The STIF manages its credit risk by investing only in debt securities that fall within the highest short-term or long-term rating categories by nationally recognized rating organizations .

Credit Quality Rating	Amortized Cost	Percentage of Amortized Cost
AAAm	\$ 283,637,446	6.74%
AA / A-1+	815,000,000	19.36%
A / A-1	690,000,000	16.39%
A-2*	450,000,000	10.69%
N/R*	65,000,000	1.54%
Federal Agency and U.S. Govt/Govt Guaranteed Securities	1,905,116,373	45.27%
Total	<u>\$4,208,753,819</u>	<u>100.00%</u>

*A-2 securities are backed by irrevocable standby letters of credit provided by federal home loan banks. N/R securities are federally insured custodial account securities.

CONNECTICUT STATE TREASURER'S SHORT-TERM INVESTMENT FUND

NOTES TO FINANCIAL STATEMENTS (Continued)

Concentration of Credit Risk

The Short-Term Investment Fund limits the amount it may invest in any one issuer to an amount not to exceed 10 percent with a ten-business-day cure period other than overnight or two-business-day repurchase agreements and U.S. government and agency securities. As of June 30, 2014, the table below lists issuers with concentrations of greater than 5 percent.

Issuer	Fair Value	Percent of Total Portfolio
Federal Home Loan Bank	\$592,260,445	14.1%
Federal Farm Credit	530,211,744	12.6%
JP Morgan Chase	390,000,000	9.3%
TD Bank	390,000,000	9.3%
US Bank	325,000,000	7.7%
BB&T Company	300,000,000	7.1%
Freddie Mac	265,928,686	6.3%
Merrill Lynch	250,000,000	5.9%

NOTE 4: CUSTODIAN

BNY Mellon was appointed as custodian for STIF effective December 9, 2013. STIF pays a percentage of the approximate \$350,000 custodial fee charged to the Short-Term Investment Unit. This percentage is calculated quarterly by determining the STIF size relative to that of the total Short-Term Investment Unit.

NOTE 5: ADMINISTRATION

STIF is managed and administered by employees of the State of Connecticut Treasury. Salaries and fringe benefit costs as well as operating expenses are charged directly to the Fund.

NOTE 6: DISTRIBUTIONS TO INVESTORS

The components of the distributions to investors are as follows for the income earned during the twelve months ended:

<u>Distributions:</u>	<u>2014</u>	<u>2013</u>
July	\$589,887	\$715,740
August	407,061	698,925
September	271,572	884,348
October	552,704	721,930
November	489,583	825,425
December	572,477	684,328
January	607,051	608,181
February	558,172	454,326
March	591,688	336,432
April	550,054	333,745
May	577,896	349,361
June (Payable at June 30)	530,908	706,145
Total Distribution Paid & Payable	<u>\$6,299,050</u>	<u>\$7,318,887</u>

NOTE 7: INVESTMENTS IN SECURITIES

The following is a summary of investments in securities, at amortized cost and fair value as of June 30, 2014 :

CONNECTICUT STATE TREASURER'S SHORT-TERM INVESTMENT FUND

NOTES TO FINANCIAL STATEMENTS (Continued)

Investment	Amortized Cost	Fair Value
Deposit Instruments	\$1,630,000,000	\$1,630,000,000
Federal Agency Securities	1,591,459,563	1,591,853,767
Bank Commercial Paper	325,000,000	325,000,000
Government Money Market Funds	283,637,446	283,637,446
US Government Guaranteed/Insured	128,656,810	128,643,966
Repurchase Agreements	250,000,000	250,000,000
TOTAL	\$4,208,753,819	\$4,209,135,179

Repurchase agreements are agreements to purchase securities from an entity for a specified amount of cash and to resell the securities to the entity at an agreed upon price and time. They are used to enhance returns with minimal risk on overnight cash deposits of the Fund. Such transactions are only entered into with primary government securities dealers who report directly to the Federal Reserve Bank of New York and commercial banks that meet certain quality standards. All repurchase agreements are collateralized at between 100 percent and 102 percent of the securities' value. As of fiscal year end, STIF held \$250 million in repurchase agreements.

In an effort to improve disclosures associated with derivative contracts, the Government Accounting Standards Board (GASB) issued GASB Statement No. 53, Accounting and Financial Reporting for Derivative Instruments, effective for the fiscal years beginning after June 15, 2009. Statement No. 53 requires that all derivatives be reported on the Statement of Net Assets and defines a derivative instrument as a financial instrument or other contract with all three of the following characteristics: a) it has (1) one or more underlyings (a specified interest rate, security price, commodity price, foreign exchange rate, index of prices or rates or other variable) and (2) one or more notional amounts (a number of currency units, shares, bushels, pounds, or other units specified in the contract) b) it requires no initial investment or smaller than would be required for other types of contracts c) its terms require or permit net settlement, it can readily be settled net by a means outside the contract, or it provides for delivery of an asset that puts the recipient in a position not substantially different from net settlement.

For the fiscal year ended June 30, 2014, the Short-Term Investment Fund held adjustable-rate U.S. government agency securities whose interest rates vary directly with short-term money market indices and are reset either daily, weekly, monthly or quarterly. Such securities allow the Fund to earn higher interest rates as market rates increase, thereby increasing fund yields and protecting against the erosion of market values from rising interest rates. These adjustable rate securities have similar risks as fixed-rate securities from the same issuers.

NOTE 8: CREDIT RATING OF THE FUND

Throughout the year ended June 30, 2014, STIF was rated AAAM, its highest rating, by Standard and Poor's Corporation ("S&P"). In November 2013, following a review of the portfolio and STIF's investment policies, management and procedures, S&P reaffirmed STIF's AAAM rating and has continued to maintain this high rating throughout the current fiscal year. In order to maintain an AAAM rating, STIF adheres to the following guidelines:

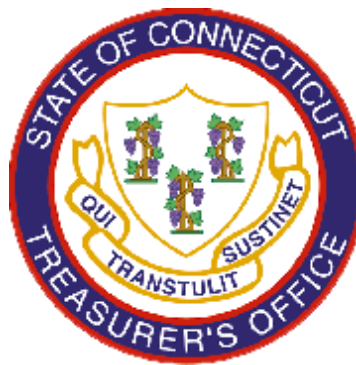
- Weekly portfolio and market value calculations;
- Maintenance of credit quality standards for portfolio securities with at least 50% of such securities rated A-1+ or invested in overnight repurchase agreements with dealers or banks rated A-1;
- Ensuring adequate portfolio diversification standards with no more than 5% of the portfolio invested in an individual security and no more than 10% invested in an individual issuer, with a ten-business-day cure period, excluding one and two day repurchase agreements and U.S. government agency securities; and
- A limit on the overall portfolio weighted average maturity (currently no more than 60 days).

It is the Treasurer's intention to take any and all such actions as are needed from time to time to maintain the AAAM rating.

NOTES TO FINANCIAL STATEMENTS (Continued)

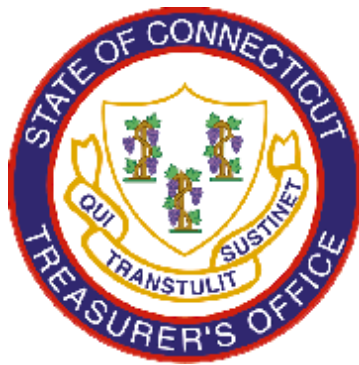
NOTE 9: SUBSEQUENT EVENTS

The Fund management has evaluated the events and transactions that have occurred through December 31, 2014, the date the basic financial statements were available to be issued. There were no subsequent events identified related to the Short-Term Investment Fund that could have a material impact on the Short-Term Investment Fund's financial statements.



Investment

Section



2014 short-term investment fund

Fund Facts at June 30, 2014

Investment Strategy/Goals: To provide a safe, liquid and effective investment vehicle for the operating cash of the State, municipalities and other Connecticut political subdivisions.

Performance Objective: As high a level of current income as is consistent with, first, the safety of principal and, second, the provision of liquidity.

Benchmarks: : iMoneyNet Money Fund AverageTM - Rated First Tier Institutional Average (MFR) Index, Federal Reserve Three-Month T-Bill.

Date of Inception: 1972

Total Net Assets: \$4.2 billion

Internally Managed

External Management Fees: None

Expense Ratio: Approximately 4-5 basis points (includes internal management and personnel salaries)

Description of the Fund

The Treasurer's Short-Term Investment Fund ("STIF" or the "Fund") is an AAAM rated investment pool of high-quality, short-term money market instruments managed by the Treasurer's Cash Management Division. Created in 1972, it serves as an investment vehicle for the operating cash of the State Treasury, State agencies and authorities, municipalities, and other political subdivisions of the State. (See Figure 15-1.) STIF's objective is to provide as high a level of current income as is consistent with, first, the safety of principal and, second, the provision of liquidity to meet participants' daily cash flow requirements. During the 2014 fiscal year, STIF's portfolio averaged \$4.7 billion.

STIF employs a top-down approach to developing its investment strategy for the management of its assets. Starting with the objectives of the Fund, STIF considers constraints outlined in its investment policy, which include among other parameters: liquidity management, limitations on the portfolio's weighted average maturity (see Figure 15-2), and permissible investment types. Next, an asset allocation is developed to identify securities that are expected to perform well in the current market environment. Over the long-term, STIF continually analyzes expectations of future interest rate movements and changes in the shape of the yield curve to ensure the most prudent and effective short-term money management for its clients. Ongoing credit analysis enables STIF to enhance its yield by identifying high-quality credits in undervalued sectors of the economy.

STIF pays interest monthly based on the daily earnings of the Fund less Fund expenses and an allocation to the Fund's Designated Surplus Reserve. The daily reserve allocations equal one-tenth of one percent of the Fund's daily balances divided by the number of days in the year, until the reserve totals one percent of the Fund's daily balance. The reserve at June 30, 2014, totaled \$50.3 million.

To help the Fund and its investors evaluate performance, STIF compares its returns to two benchmarks. The first is the iMoneyNet Money Fund AverageTM - Rated First Tier Institutional Average (MFR) Index. This index represents an average of institutional money market mutual funds rated AAAM that invest primarily in first-tier (securities rated A-1, P-1) taxable securities. While STIF's investment policy allows for somewhat greater flexibility than these SEC-registered funds, the MFR Index is the most appropriate benchmark against which to judge STIF's performance. During the past year, STIF's actual investment strategy has been considerably more restrictive than most private money funds and its own policy would permit. (See Figure 15-3.)

STIF's yields are also compared to the average Federal Reserve three-month T-Bill rate and a three-month CD rate. The former benchmark is used to measure STIF's effectiveness in achieving yields in excess of a "risk-free" investment. The latter is shown for the benefit of STIF investors, many of whom invest in bank certificates of deposit. In viewing these benchmarks, it is important to keep in mind that yields of the CD index will exceed those of the T-Bill index due to a CD's slightly higher risk profile and comparatively lower liquidity. Additionally, it is important to note that the 90-day benchmarks exceed STIF's shorter average maturity. In order to maintain its AAAM rating, the STIF cannot exceed a 60-day weighted average maturity (WAM) limit. Furthermore, these benchmarks are "unmanaged" and are not affected by management fees or operating expenses. (See Figure 15-6.)

CONNECTICUT STATE TREASURER'S SHORT-TERM INVESTMENT FUND

Among the Fund's several achievements during the 2014 fiscal year was the reaffirmation and continuation of its AAAM rating by Standard & Poor's. In S&P's view, "a fund rated 'AAAM' demonstrates extremely strong capacity to maintain principal stability and to limit exposure to principal losses due to credit risk."

Portfolio Characteristics

During Fiscal Year 2014, the STIF portfolio continued its conservative investment approach of balancing liquidity and stability while maximizing yield for investors. STIF's conservative investment practices include maintaining abundant liquidity, a well-diversified portfolio, and significant holdings of securities issued, guaranteed or insured by the U.S. government and federal agencies.

Accordingly, at year-end STIF held 57 percent of Fund assets in overnight investments or investments that are available on a same-day basis. During the fiscal year, the Fund's weighted average maturity fluctuated between a low of 31 days and a high of 45 days and ended the year with a weighted average maturity of 40 days. Sixty-four percent of STIF's assets were invested in securities issued, guaranteed or insured by the U.S. government or federal agencies, in repurchase agreements backed by such securities, or in money funds comprised of such securities.

The Fund ended the year with a 84 percent concentration in investments with short-term ratings of A-1+ and securities issued, guaranteed or insured by the U.S. government or federal agencies. Seventy-four percent of the Fund was invested in securities with maturities, or interest rate reset dates for adjustable rate securities, of less than 30 days. The Fund's three largest security weightings included deposit instruments (38.7 percent), federal agency securities (37.8 percent), and bank commercial paper (7.7 percent). (See Figure 15-5.)

Market Review

During Fiscal Year 2014, the short-term markets changed their focus from the European sovereign and banking crisis to the outlook for short-term rates and the effect of the end of the Federal Reserve's quantitative easing program. While the majority of developed nations continued to provide and promote liquidity through low central bank rates and market intervention, stronger economic growth remained, for the most part, elusive. Despite the record amount of liquidity that has been worked into the system over the past few years, inflation remains subdued domestically and has decreased in other areas of the developed world. As the Federal Reserve Bank (Fed) neared the end of its quantitative easing, its peers (particularly the European Central Bank, Bank of Japan and Peoples Bank of China) continued to find ways to increase monetary stimulus with the hope of fuelling growth and reducing the risk of deflation. The lack of inflation in Europe can be seen in German 10 year Bunds, which at the end of the fiscal year yielded just over 1.20 percent and have continued to fall. Due to low yields in the Eurozone, the domestic market has attracted capital with its higher rates. This has held yields below where they might "normally" be at this point in the cycle and kept short-term rates just marginally above zero.

Domestic growth, as measured by Gross Domestic Product (GDP), increased during the fiscal year and became less volatile. For Fiscal Year 2014, GDP ranged between 1.9 percent and 3.1 percent. For the entire fiscal year, GDP averaged a rate of 2.6 percent, up 0.8 percentage point from Fiscal Year 2013. Meanwhile, the unemployment rate ended the fiscal year at 6.1 percent, down from the 7.5 rate at the end of Fiscal Year 2013. During the course of the fiscal year, nearly 2.3 million people were added to payrolls while, at the same time, the labor force participation rate dropped from 63.5 percent to 62.8 percent, thereby increasing the effect on the unemployment rate. The unemployment rate is forecast to continue its improvement over the course of Fiscal Year 2015.

Domestic inflation averaged 1.6 percent during the fiscal year, down from 1.7 percent in fiscal year 2013. While domestic inflation was weak, inflation in the Eurozone was even weaker, with an average inflation rate of just 0.9 percent, down significantly from the Fiscal Year 2013 period.

Despite the positive developments in the economy and labor market, the Federal Reserve continues to be wary of the remaining slack in the labor force as well as the stubbornly low inflation rate. As a result, the Fed has maintained its target range for the federal funds rate at 0.00 – 0.25 percent. The Fed's mixed view on the economic outlook is reflected through the end of its monthly purchases of mortgage-backed and Treasury securities

(which, at their high, were \$85 billion a month) while expecting to maintain an extremely low funds rate. Economists and market participants continue to analyze the implications of the end of quantitative easing on future short-term interest rates. Utilizing the federal funds futures as a predictor, expectations are that the first tightening move by the Fed will be in Fiscal Year 2016.

Performance Summary

For the one-year period ending June 30, 2014, STIF reported an annual total return of 0.14 percent, net of all expenses and \$651 thousand in allocations to Fund reserves. Annual total return measures the total investment income a participant would earn with monthly compounding at the Fund's monthly net earned rate during the year. This figure exceeded that achieved by its benchmark, the MFR Index, which equaled 0.02 percent, by 12 basis points. In addition, STIF performance handily exceeded that of three-month T-Bills, which yielded 0.04 percent. The Fund's performance fell short of three-month CDs, which yielded 0.23 percent but lack STIF's daily liquidity and exceed STIF's average maturity. STIF's relative performance was limited by the fund's more cautious investment strategy which is focused on safety and liquidity.

The principal reasons for STIF's continued strong performance, despite its cautious strategy, was the selective addition of more bank deposit instruments and the active management of maturities within the portfolio as well as the low overall expense rate.

Over the long-term, STIF has performed exceptionally well. For the trailing three-, five-, seven-, and ten-year periods, STIF's compounded annual total return was 0.15 percent, 0.20 percent, 0.94 percent, and 1.87 percent, net of all expenses and contributions to reserves, exceeding returns of each of its benchmarks for all time periods. Viewed on a dollar-for-dollar basis, had one invested \$10 million in STIF ten years ago, that investment would have been worth \$12.0 million at June 30, 2014, versus \$11.7 million for a hypothetical investment in the MFR Index. (See Figure 15-6.) During the past 10 years, STIF has earned \$103.7 million above its benchmark while adding \$32.5 million to its reserves.

Risk Profile

STIF is considered extremely low risk for several reasons. First, its portfolio is comprised of high-quality, highly liquid securities, which insulate the Fund from default and liquidity risk. (See Figure 15-4.) Second, its relatively short average maturity reduces the Fund's price sensitivity to changes in market interest rates. Third, STIF has a strong degree of asset diversification by security type and issuer, as required by its investment policy, strengthening its overall risk profile. And finally, STIF's reserves are available to protect against security defaults or the erosion of security values due to dramatic and unforeseen market changes. As the primary short-term investment vehicle for the operating cash of the State, STIF has the ultimate confidence of the State government.

While STIF is managed diligently to protect against losses from credit and market changes, the Fund is not insured or guaranteed by any government. Therefore, the maintenance of capital cannot be fully assured.

CONNECTICUT STATE TREASURER'S SHORT-TERM INVESTMENT FUND

Figure 1-1

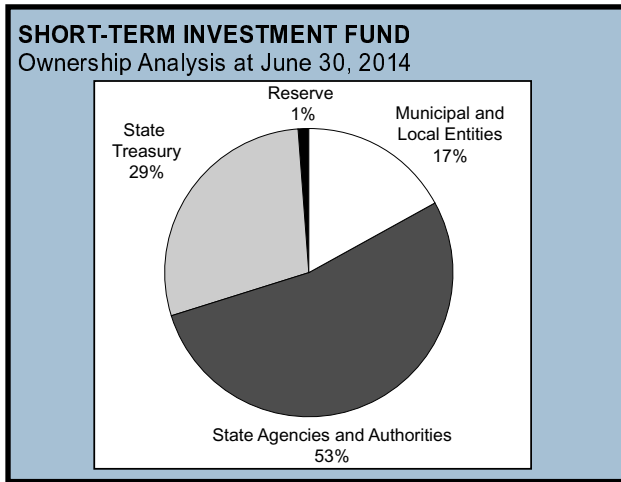


Figure 1-2

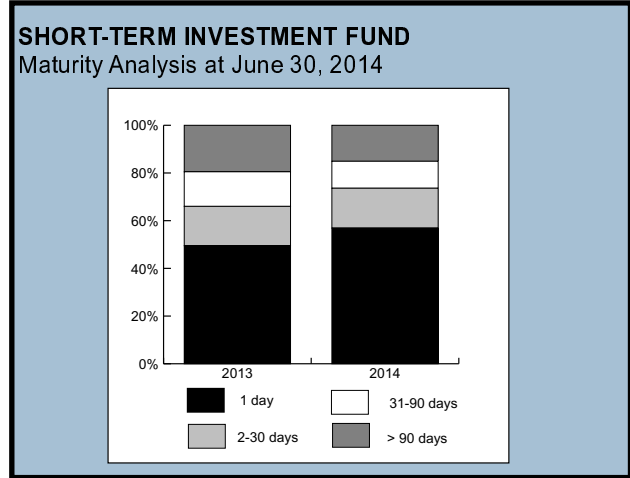


Figure 1-3

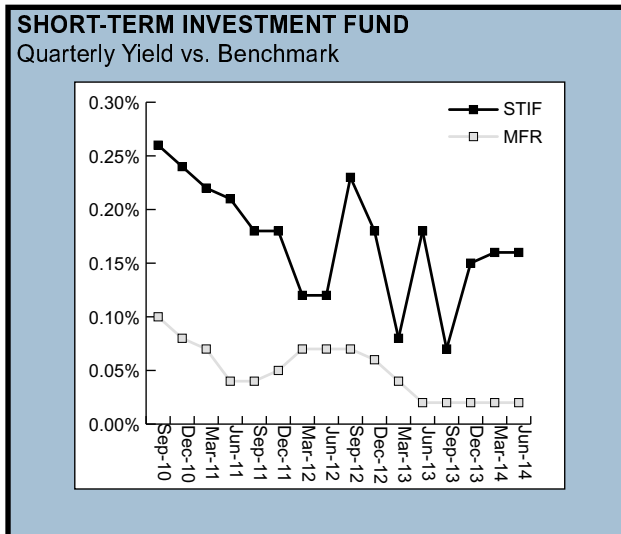
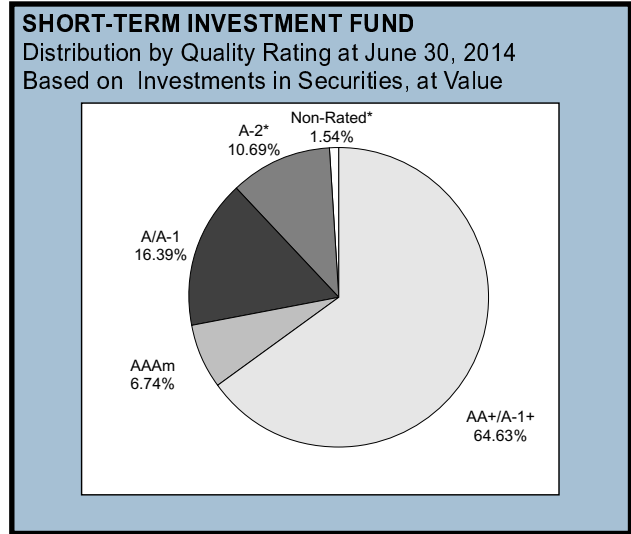


Figure 1-4



*A-2 securities are backed by irrevocable standby letters of credit provided by federal home loan banks. N/R securities are federally insured custodial account securities.

Figure 1-5

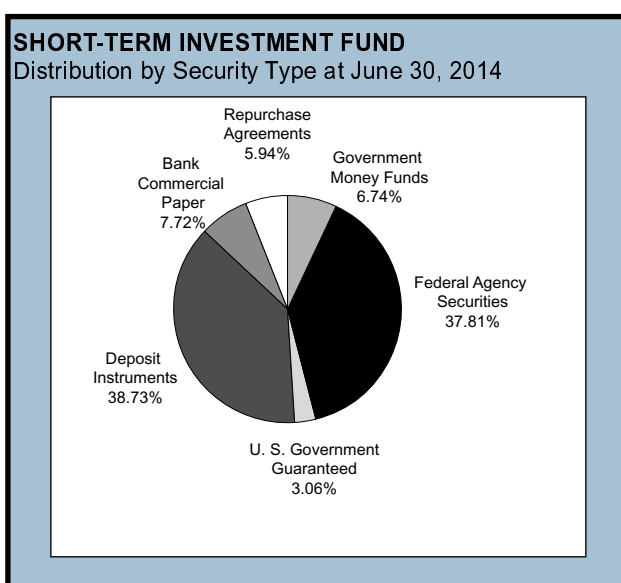


Figure 1-6

SHORT-TERM INVESTMENT FUND
Period ending June 30, 2014

	1 Yr	3 Yrs	5 Yrs	7 Yrs	10 Yrs
Compounded Annual Total Return (%)					
STIF	0.14	0.15	0.20	0.94	1.87
MFR Index*	0.02	0.04	0.06	0.79	1.62
Fed. Three-Month T-Bills	0.04	0.06	0.08	0.55	1.47
Cumulative Total Return (%)					
STIF	0.14	0.46	1.03	6.77	20.34
MFR Index*	0.02	0.12	0.29	5.64	17.49
Fed. Three-Month T-Bills	0.04	0.17	0.41	3.89	16.22

STIF uses a time-weighted linked rate of return formula to calculate rates of return.

*Represents iMoneyNet Money Fund Average™ - Rated First Tier Institutional Average (MFR) Index.

CONNECTICUT STATE TREASURER'S SHORT-TERM INVESTMENT FUND

LIST OF INVESTMENTS AT JUNE 30, 2014

Par Value	Security (Coupon, Maturity or Reset Date)	Yield %	Amortized Cost ⁽¹⁾	Fair Value ⁽¹⁾	Asset ID	Quality Rating
FEDERAL AGENCY SECURITIES (37.81% OF TOTAL INVESTMENTS)						
\$ 4,270,000	FANNIE MAE DISCOUNT NOTE, 0.00, 07/05/14	0.19	\$ 4,269,910	\$ 4,269,927	313586QR3	AA+
5,000,000	FANNIE MAE DISCOUNT NOTE, 0.00, 07/05/14	0.19	4,999,877	4,999,915	313586QR3	AA+
5,000,000	FANNIE MAE DISCOUNT NOTE, 0.00, 12/01/14	0.17	4,996,388	4,998,515	313589R54	AA+
4,863,000	FANNIE MAE, 0.875, 08/28/14	0.18	4,868,347	4,868,986	3135G0BY8	AA+
10,000,000	FANNIE MAE, 0.875, 08/28/14	0.18	10,010,869	10,012,310	3135G0BY8	AA+
8,570,000	FANNIE MAE, 0.875, 08/28/14	0.18	8,580,733	8,580,550	3135G0BY8	AA+
4,800,000	FANNIE MAE, 1.50, 09/08/14	0.18	4,811,966	4,812,389	31398A3G5	AA+
10,000,000	FANNIE MAE, 3.00, 09/16/14	0.20	10,058,944	10,060,860	31398AYY2	AA+
3,000,000	FANNIE MAE, 1.57, 09/24/14	0.20	3,009,554	3,009,735	3136FPLV7	AA+
2,285,000	FANNIE MAE, 1.15, 11/18/14	0.19	2,293,432	2,293,589	31398A6C1	AA+
1,400,000	FANNIE MAE, 2.625, 11/20/14	0.18	1,413,286	1,413,593	31398AZV7	AA+
12,492,000	FANNIE MAE, 2.625, 11/20/14	0.18	12,610,533	12,613,285	31398AZV7	AA+
4,891,000	FANNIE MAE, 2.625, 11/20/14	0.18	4,937,330	4,938,487	31398AZV7	AA+
10,000,000	FANNIE MAE, 0.75, 12/19/14	0.19	10,026,082	10,029,570	3135G0FY4	AA+
15,000,000	FANNIE MAE, 0.375, 03/16/15	0.19	15,019,828	15,025,635	3135G0HG1	AA+
4,850,000	FANNIE MAE, 5.00, 04/15/15	0.20	5,033,573	5,034,746	31359MA45	AA+
3,957,000	FANNIE MAE, 5.00, 04/15/15	0.20	4,108,452	4,107,730	31359MA45	AA+
10,000,000	FANNIE MAE, 5.00, 04/15/15	0.20	10,383,264	10,380,920	31359MA45	AA+
1,527,000	FANNIE MAE, 0.50, 05/27/15	0.15	1,531,808	1,531,211	3135G0KM4	AA+
10,000,000	FANNIE MAE, 0.50, 05/27/15	0.15	10,032,823	10,027,580	3135G0KM4	AA+
15,000,000	FANNIE MAE, 0.50, 07/02/15	0.15	15,052,676	15,048,585	3135G0LN1	AA+
2,825,000	FANNIE MAE, 0.50, 07/02/15	0.15	2,834,867	2,834,150	3135G0LN1	AA+
2,320,000	FANNIE MAE, 0.50, 07/02/15	0.15	2,327,688	2,327,514	3135G0LN1	AA+
3,576,000	FANNIE MAE, 2.375, 07/28/15	0.18	3,660,178	3,659,786	31398AU34	AA+
25,000,000	FANNIE MAE VAR, 0.16, 07/20/14	0.16	25,003,577	25,008,075	3135G0HB2	AA+
6,000,000	FANNIE MAE VAR, 0.16, 07/20/14	0.16	6,001,021	6,001,938	3135G0HB2	AA+
10,542,000	FANNIE MAE VAR, 0.16, 07/20/14	0.16	10,543,804	10,545,405	3135G0HB2	AA+
5,000,000	FANNIE MAE VAR, 0.45, 08/24/14	0.22	5,013,381	5,017,905	3136FRT60	AA+
5,430,000	FED FARM CREDIT, 0.30, 07/18/14	0.21	5,430,219	5,430,456	3133EAYL6	AA+
2,640,000	FED FARM CREDIT, 0.18, 08/25/14	0.19	2,639,970	2,640,428	3133ECVH4	AA+
5,118,000	FED FARM CREDIT, 3.00, 09/22/14	0.17	5,150,863	5,151,559	31331GL80	AA+
6,500,000	FED FARM CREDIT, 0.55, 10/02/14	0.22	6,505,403	6,507,313	3133EAKD9	AA+
1,514,000	FED FARM CREDIT, 0.27, 11/05/14	0.19	1,514,446	1,514,816	3133EA6W3	AA+
2,500,000	FED FARM CREDIT, 4.48, 11/20/14	0.21	2,541,468	2,541,650	31331GFA2	AA+
1,000,000	FED FARM CREDIT, 4.55, 12/15/14	0.23	1,019,717	1,020,229	31331SJQ7	AA+
1,025,000	FED FARM CREDIT, 0.25, 12/24/14	0.19	1,025,284	1,025,633	3133ECAV6	AA+
5,000,000	FED FARM CREDIT, 0.16, 02/05/15	0.18	4,999,328	5,000,810	3133EDEU2	AA+
2,875,000	FED FARM CREDIT, 3.85, 02/11/15	0.21	2,939,343	2,939,087	31331YSV3	AA+
3,800,000	FED FARM CREDIT, 0.28, 04/09/15	0.18	3,802,997	3,803,808	3133ECKX1	AA+
5,000,000	FED FARM CREDIT, 0.13, 05/01/15	0.13	4,999,914	4,997,360	3133EDKV3	AA+
9,219,000	FED FARM CREDIT, 0.50, 05/01/15	0.13	9,247,228	9,242,140	3133EANJ3	AA+
2,569,000	FED FARM CREDIT, 0.50, 06/23/15	0.16	2,577,484	2,577,365	3133EARQ3	AA+
50,000,000	FED FARM CREDIT VAR, 0.27, 07/21/14	0.27	49,999,446	50,004,900	3133EAM47	AA+
25,000,000	FED FARM CREDIT VAR, 0.13, 07/06/14	0.13	24,998,486	25,004,225	3133ECEV2	AA+
2,000,000	FED FARM CREDIT VAR, 0.18, 07/13/14	0.18	2,000,633	2,001,002	3133EAXP8	AA+
25,000,000	FED FARM CREDIT VAR, 0.24, 08/19/14	0.24	25,000,000	25,020,625	3133ECFR0	AA+
25,000,000	FED FARM CREDIT VAR, 0.12, 07/25/14	0.12	24,997,510	25,003,475	3133ECJU9	AA+
13,000,000	FED FARM CREDIT VAR, 0.15, 07/26/14	0.15	13,000,510	13,004,784	3133EA2J6	AA+
20,000,000	FED FARM CREDIT VAR, 0.23, 07/01/14	0.23	20,000,000	20,017,080	3133ECKJ2	AA+
10,000,000	FED FARM CREDIT VAR, 0.16, 07/01/14	0.16	10,000,000	10,004,070	3133ECKK9	AA+
2,000,000	FED FARM CREDIT VAR, 0.17, 07/23/14	0.17	2,000,493	2,001,092	3133EA5D6	AA+
25,000,000	FED FARM CREDIT VAR, 0.17, 07/23/14	0.17	25,008,284	25,013,650	3133EA5D6	AA+
15,000,000	FED FARM CREDIT VAR, 0.17, 07/23/14	0.17	15,003,743	15,008,190	3133EA5D6	AA+
6,500,000	FED FARM CREDIT VAR, 0.17, 07/27/14	0.17	6,500,825	6,503,510	3133EAJP4	AA+
10,000,000	FED FARM CREDIT VAR, 0.17, 07/27/14	0.17	10,002,510	10,005,400	3133EAJP4	AA+
10,000,000	FED FARM CREDIT VAR, 0.17, 07/27/14	0.17	10,002,939	10,005,400	3133EAJP4	AA+
25,000,000	FED FARM CREDIT VAR, 0.16, 07/04/14	0.16	25,004,334	25,010,150	3133EANX2	AA+
20,000,000	FED FARM CREDIT VAR, 0.20, 08/06/14	0.20	20,000,000	20,013,300	3133ECNL4	AA+
20,000,000	FED FARM CREDIT VAR, 0.17, 07/22/14	0.17	20,007,942	20,012,660	3133EAVE5	AA+
1,100,000	FED FARM CREDIT VAR, 0.15, 07/03/14	0.15	1,099,888	1,100,432	3133ECKN3	AA+
25,000,000	FED FARM CREDIT VAR, 0.15, 07/14/14	0.15	25,003,075	25,009,850	3133ECHK3	AA+
15,000,000	FED FARM CREDIT VAR, 0.21, 07/22/14	0.21	14,998,006	15,013,185	3133ED5G3	AA+
25,000,000	FED FARM CREDIT VAR, 0.20, 09/02/14	0.20	24,999,022	25,018,725	3133EDAW2	AA+
25,000,000	FED FARM CREDIT VAR, 0.21, 07/04/14	0.21	24,998,086	25,022,300	3133ED6A5	AA+

CONNECTICUT STATE TREASURER'S SHORT-TERM INVESTMENT FUND

LIST OF INVESTMENTS AT JUNE 30, 2014 (Continued)

Par Value	Security (Coupon, Maturity or Reset Date)	Yield %	Amortized Cost	Fair Value	Asset ID	Quality Rating
25,000,000	FED FARM CREDIT VAR, 0.21, 07/04/14	0.21	24,998,081	25,022,300	3133ED6A5	AA+
1,000,000	FED FARM CREDIT VAR, 0.26, 08/26/14	0.26	1,000,509	1,001,705	3133ECYA6	AA+
20,000,000	FED FARM CREDIT VAR, 0.14, 09/29/14	0.14	19,985,866	19,993,100	3133EDMK5	AA+
5,500,000	FED FARM CREDIT VAR, 0.18, 07/02/14	0.18	5,502,302	5,503,839	3133ECNB6	AA+
25,000,000	FED FARM CREDIT VAR, 0.15, 08/05/14	0.15	24,990,665	24,993,600	3133EDL42	AA+
4,500,000	FED FARM CREDIT VAR, 0.25, 07/29/14	0.25	4,505,672	4,506,543	3133EDEE8	AA+
10,000,000	FED HOME LOAN BANK, 0.40, 07/02/14	0.16	10,000,065	10,000,100	313379SK6	AA+
2,500,000	FED HOME LOAN BANK, 0.125, 07/11/14	0.18	2,499,965	2,500,033	313383QB0	AA+
10,000,000	FED HOME LOAN BANK, 0.18, 07/18/14	0.19	9,999,939	10,000,080	313383RW3	AA+
5,800,000	FED HOME LOAN BANK, 0.19, 07/25/14	0.15	5,800,150	5,800,232	313383Q79	AA+
15,000,000	FED HOME LOAN BANK, 0.19, 07/25/14	0.20	14,999,875	15,001,215	313383QF1	AA+
15,000,000	FED HOME LOAN BANK, 0.18, 08/05/14	0.18	15,000,043	15,001,485	313383TK7	AA+
7,900,000	FED HOME LOAN BANK, 0.18, 08/05/14	0.18	7,900,174	7,900,782	313383TK7	AA+
15,000,000	FED HOME LOAN BANK, 5.50, 08/13/14	0.18	15,093,852	15,094,845	3133XLJP9	AA+
10,000,000	FED HOME LOAN BANK, 0.125, 08/22/14	0.19	9,999,110	10,000,700	313383X22	AA+
9,500,000	FED HOME LOAN BANK, 0.17, 09/03/14	0.17	9,500,043	9,500,200	313383YP0	AA+
500,000	FED HOME LOAN BANK, 1.375, 09/12/14	0.19	501,181	501,269	313370JS8	AA+
1,000,000	FED HOME LOAN BANK, 1.375, 09/12/14	0.19	1,002,304	1,002,537	313370JS8	AA+
1,000,000	FED HOME LOAN BANK, 1.375, 09/12/14	0.19	1,002,319	1,002,537	313370JS8	AA+
5,800,000	FED HOME LOAN BANK, 3.25, 09/12/14	0.18	5,835,538	5,836,209	3133XUMR1	AA+
1,140,000	FED HOME LOAN BANK, 1.40, 09/29/14	0.20	1,143,353	1,143,535	3133712M7	AA+
10,000,000	FED HOME LOAN BANK, 0.18, 10/01/14	0.17	10,000,201	10,002,500	3130A03C2	AA+
10,000,000	FED HOME LOAN BANK, 0.125, 10/28/14	0.18	9,998,302	10,000,920	3130A0B41	AA+
20,000,000	FED HOME LOAN BANK, 0.21, 11/07/14	0.18	20,002,305	20,007,720	3130A03Q1	AA+
4,025,000	FED HOME LOAN BANK, 4.75, 11/14/14	0.18	4,093,504	4,093,876	3133XBMT9	AA+
1,000,000	FED HOME LOAN BANK, 4.50, 11/14/14	0.17	1,016,110	1,016,240	3133X9DC1	AA+
15,000,000	FED HOME LOAN BANK, 0.07, 11/20/14	0.09	14,999,018	14,998,035	3130A23A2	AA+
12,750,000	FED HOME LOAN BANK, 0.125, 11/25/14	0.18	12,747,300	12,751,160	3130A0CS7	AA+
3,000,000	FED HOME LOAN BANK, 0.875, 12/12/14	0.20	3,009,071	3,010,080	313371PC4	AA+
2,320,000	FED HOME LOAN BANK, 2.75, 12/12/14	0.19	2,346,643	2,347,021	3133XVNU1	AA+
10,000,000	FED HOME LOAN BANK, 0.125, 01/06/15	0.18	9,997,048	10,000,210	3130A0KC3	AA+
10,000,000	FED HOME LOAN BANK, 0.20, 01/09/15	0.20	10,000,000	10,002,530	3130A0FL9	AA+
5,000,000	FED HOME LOAN BANK, 0.46, 01/14/15	0.11	5,009,325	5,008,935	313378KN0	AA+
9,915,000	FED HOME LOAN BANK, 0.16, 01/16/15	0.17	9,914,197	9,916,735	3130A0PW4	AA+
2,890,000	FED HOME LOAN BANK, 0.25, 01/16/15	0.19	2,890,944	2,892,078	313381H24	AA+
3,900,000	FED HOME LOAN BANK, 0.25, 01/16/15	0.19	3,901,595	3,902,804	313381H24	AA+
20,000,000	FED HOME LOAN BANK, 0.09, 01/20/15	0.12	19,996,985	19,996,640	3130A1QX9	AA+
10,000,000	FED HOME LOAN BANK, 0.21, 01/20/15	0.21	9,999,900	9,997,000	3130A0J43	AA+
15,000,000	FED HOME LOAN BANK, 0.21, 01/20/15	0.21	14,999,850	14,995,500	3130A0J43	AA+
10,000,000	FED HOME LOAN BANK, 0.125, 02/03/15	0.18	9,996,892	9,999,140	3130A0TW0	AA+
4,000,000	FED HOME LOAN BANK, 0.59, 02/05/15	0.21	4,009,026	4,010,668	313378QU8	AA+
3,640,000	FED HOME LOAN BANK, 7.375, 02/13/15	0.21	3,801,730	3,801,714	3133MB2B2	AA+
3,260,000	FED HOME LOAN BANK, 4.75, 02/13/15	0.21	3,351,905	3,352,489	3133XBDM4	AA+
10,000,000	FED HOME LOAN BANK, 0.21, 02/18/15	0.18	10,002,054	10,003,640	3130A0FX3	AA+
10,000,000	FED HOME LOAN BANK, 0.09, 02/19/15	0.11	9,998,573	9,996,220	3130A1Y85	AA+
10,000,000	FED HOME LOAN BANK, 0.25, 02/20/15	0.18	10,004,656	10,006,910	313381YP4	AA+
5,070,000	FED HOME LOAN BANK, 0.25, 02/20/15	0.18	5,072,197	5,073,503	313381YP4	AA+
2,000,000	FED HOME LOAN BANK, 0.21, 02/26/15	0.18	2,000,186	2,000,288	3130A0U73	AA+
10,000,000	FED HOME LOAN BANK, 0.21, 02/27/15	0.21	10,000,000	10,001,160	3130A0UG3	AA+
6,045,000	FED HOME LOAN BANK, 0.375, 03/13/15	0.19	6,052,792	6,055,669	313376ZQ1	AA+
7,500,000	FED HOME LOAN BANK, 2.75, 03/13/15	0.18	7,634,687	7,636,110	3133XWX95	AA+
10,000,000	FED HOME LOAN BANK, 0.125, 03/20/15	0.18	9,996,243	9,994,130	3130A1DR6	AA+
25,000,000	FED HOME LOAN BANK, 0.125, 04/21/15	0.14	24,997,095	24,995,700	3130A1QG6	AA+
10,000,000	FED HOME LOAN BANK, 0.125, 04/21/15	0.14	9,999,854	9,998,280	3130A1QG6	AA+
10,000,000	FED HOME LOAN BANK, 0.20, 04/24/15	0.20	10,000,000	9,998,470	3130A1HR2	AA+
10,000,000	FED HOME LOAN BANK, 0.21, 04/29/15	0.19	10,001,830	10,003,600	3130A0RA0	AA+
15,000,000	FED HOME LOAN BANK, 0.13, 05/08/15	0.14	14,998,471	14,990,730	3130A1VT2	AA+
10,000,000	FED HOME LOAN BANK, 0.125, 06/08/15	0.15	9,997,470	9,991,380	3130A2CL8	AA+
25,000,000	FED HOME LOAN BANK VAR, 0.21, 07/15/14	0.21	25,000,000	25,020,225	313383YD7	AA+
50,000,000	FED HOME LOAN BANK VAR, 0.20, 08/19/14	0.20	50,000,000	50,036,350	313383VX6	AA+
20,000,000	FED HOME LOAN BANK VAR, 0.22, 08/26/14	0.22	20,000,000	20,019,200	313383X30	AA+
25,000,000	FED HOME LOAN BANK VAR, 0.22, 09/04/14	0.22	25,000,000	25,024,175	313383XK2	AA+
25,000,000	FED HOME LOAN BANK VAR, 0.22, 07/07/14	0.22	25,000,000	25,024,950	3130A06X3	AA+
10,300,000	FREDDIE MAC DISCOUNT NOTE, 0.00, 11/24/14	0.16	10,293,218	10,289,422	3134A2HF8	AA+
22,700,000	FREDDIE MAC DISCOUNT NOTE, 0.00, 11/24/14	0.16	22,684,131	22,676,687	3134A2HF8	AA+
3,040,000	FREDDIE MAC, 5.00, 07/15/14	0.23	3,045,565	3,045,764	3134A4UU6	AA+

CONNECTICUT STATE TREASURER'S SHORT-TERM INVESTMENT FUND

LIST OF INVESTMENTS AT JUNE 30, 2014 (Continued)

Par Value	Security (Coupon, Maturity or Reset Date)	Yield %	Amortized Cost	Fair Value	Asset ID	Quality Rating
4,750,000	FREDDIE MAC, 1.00, 07/30/14	0.14	4,753,251	4,753,430	3137EACU1	AA+
30,000,000	FREDDIE MAC, 0.25, 08/14/14	0.17	30,002,986	30,006,300	3134G3Q52	AA+
8,700,000	FREDDIE MAC, 1.00, 08/20/14	0.19	8,709,667	8,710,640	3134G2UA8	AA+
9,457,000	FREDDIE MAC, 1.00, 08/20/14	0.19	9,467,605	9,468,566	3134G2UA8	AA+
10,000,000	FREDDIE MAC, 1.00, 08/20/14	0.19	10,011,075	10,012,230	3134G2UA8	AA+
5,000,000	FREDDIE MAC, 1.00, 08/20/14	0.19	5,005,760	5,006,115	3134G2UA8	AA+
3,669,000	FREDDIE MAC, 1.00, 08/27/14	0.19	3,673,650	3,674,188	3137EACV9	AA+
8,750,000	FREDDIE MAC, 1.00, 08/27/14	0.19	8,761,190	8,762,373	3137EACV9	AA+
6,000,000	FREDDIE MAC, 1.00, 08/27/14	0.19	6,008,660	6,008,484	3137EACV9	AA+
2,720,000	FREDDIE MAC, 0.375, 08/28/14	0.17	2,720,897	2,721,300	3134G3YW4	AA+
7,350,000	FREDDIE MAC, 0.50, 09/19/14	0.19	7,355,009	7,356,644	3134G2YJ5	AA+
1,000,000	FREDDIE MAC, 0.50, 09/19/14	0.19	1,000,628	1,000,904	3134G2YJ5	AA+
10,000,000	FREDDIE MAC, 0.50, 09/19/14	0.19	10,007,383	10,009,040	3134G2YJ5	AA+
20,000,000	FREDDIE MAC, 0.75, 09/22/14	0.19	20,025,264	20,030,240	3134G2WG3	AA+
20,000,000	FREDDIE MAC, 0.75, 09/22/14	0.19	20,025,713	20,030,240	3134G2WG3	AA+
1,250,000	FREDDIE MAC, 5.00, 10/27/14	0.17	1,269,493	1,269,761	3128X3F32	AA+
2,844,000	FREDDIE MAC, 5.00, 11/13/14	0.18	2,894,676	2,893,722	3128X3L76	AA+
2,300,000	FREDDIE MAC, 5.00, 11/13/14	0.18	2,340,959	2,340,211	3128X3L76	AA+
6,213,000	FREDDIE MAC, 5.00, 11/13/14	0.18	6,323,727	6,321,622	3128X3L76	AA+
3,141,000	FREDDIE MAC, 0.75, 11/25/14	0.19	3,148,092	3,149,204	3137EACY3	AA+
5,363,000	FREDDIE MAC, 0.75, 11/25/14	0.19	5,375,368	5,377,008	3137EACY3	AA+
4,747,000	FREDDIE MAC, 0.75, 11/25/14	0.19	4,757,839	4,759,399	3137EACY3	AA+
1,000,000	FREDDIE MAC, 0.35, 12/05/14	0.19	1,000,699	1,001,032	3134G3H78	AA+
5,700,000	FREDDIE MAC, 0.35, 12/05/14	0.19	5,703,983	5,705,882	3134G3H78	AA+
10,000,000	FREDDIE MAC, 0.625, 12/29/14	0.17	10,022,431	10,024,660	3137EADA4	AA+
7,057,000	FREDDIE MAC, 2.875, 02/09/15	0.18	7,172,941	7,175,198	3137EACH0	AA+
10,433,000	FREDDIE MAC, 0.50, 04/17/15	0.17	10,460,062	10,463,068	3137EADD8	AA+
5,625,000	FREDDIE MAC, 0.50, 04/17/15	0.17	5,639,154	5,641,211	3137EADD8	AA+
15,000,000	FREDDIE MAC, 0.50, 04/17/15	0.17	15,044,375	15,043,230	3137EADD8	AA+
1,200,000	FREDDIE MAC, 0.30, 07/08/15	0.17	1,201,564	1,200,911	3134G4TH1	AA+
\$1,588,722,000			\$ 1,591,459,563	\$ 1,591,853,767		
U. S. GOVERNMENT GUARANTEED (3.06% OF TOTAL INVESTMENTS)						
\$ 30,000,000	FEDERALLY INSURED CUST ACCT, 0.16, 07/02/14 ⁽³⁾	0.16	\$ 30,000,000	\$ 30,000,000	99CEADJ18	NR
35,000,000	FEDERALLY INSURED CUST ACCT, 0.16, 07/02/14 ⁽³⁾	0.16	35,000,000	35,000,000	99CEADJ19	NR
7,000,000	OVERSEAS PRIVATE INV, 0.42, 04/15/16	0.42	7,000,000	7,002,555	690353ZG5	AA+
14,795,000	OVERSEAS PRIVATE INV, 0.39, 05/02/16	0.39	14,795,000	14,780,205	690353ZK6	AA+
11,905,000	PRIVATE EXPORT FUNDING, 3.05, 10/15/14	0.17	12,004,401	12,003,657	742651DH2	AA+
4,682,000	PRIVATE EXPORT FUNDING, 4.55, 05/15/15	0.15	4,861,426	4,857,950	742651DA7	AA+
25,000,000	US TREASURY SEC. VAR. 0.07, 07/31/14	0.07	24,995,982	24,999,600	912828WK2	AA+
\$ 128,382,000			\$ 128,656,810	\$ 128,643,966		
REPURCHASE AGREEMENTS (5.94% OF TOTAL INVESTMENTS)						
\$ 250,000,000	MERRILL LYNCH, 0.10, 07/1/14	0.10	\$ 250,000,000	\$ 250,000,000	N/A	A-1
\$ 250,000,000			\$ 250,000,000	\$ 250,000,000		
DEPOSIT INSTRUMENTS (38.73% OF TOTAL INVESTMENTS)						
\$ 100,000,000	BB&T COMPANY, 0.25, 07/01/14 ⁽²⁾	0.25	\$ 100,000,000	\$ 100,000,000	N/A	A-1
200,000,000	BB&T COMPANY, 0.25, 07/01/14 ⁽²⁾	0.25	200,000,000	200,000,000	N/A	A-1
390,000,000	JP MORGAN CHASE BANK, 0.25, 07/01/14 ⁽²⁾	0.25	390,000,000	390,000,000	N/A	A-1
50,000,000	PEOPLES UNITED BANK, 0.25, 07/01/14 ⁽²⁾⁽⁸⁾	0.25	50,000,000	50,000,000	N/A	A-2
100,000,000	PEOPLES UNITED BANK, 0.25, 07/01/14 ⁽²⁾⁽⁸⁾	0.25	100,000,000	100,000,000	N/A	A-2
200,000,000	SANTANDER BANK, N.A., 0.25, 07/01/14 ⁽²⁾⁽⁸⁾	0.25	200,000,000	200,000,000	N/A	A-2
100,000,000	SVENSKA HANDELSBANKEN, 0.03, 07/01/14	0.03	100,000,000	100,000,000	N/A	A-1+
15,000,000	TD BANK, N.A., 0.31, 07/01/14 ⁽²⁾	0.31	15,000,000	15,000,000	N/A	A-1+
100,000,000	TD BANK, N.A., 0.25, 07/01/14 ⁽²⁾	0.25	100,000,000	100,000,000	N/A	A-1+
50,000,000	TD BANK, N.A., 0.35, 07/01/14 ⁽²⁾	0.35	50,000,000	50,000,000	N/A	A-1+
100,000,000	TD BANK, N.A., 0.33, 07/01/14 ⁽²⁾	0.33	100,000,000	100,000,000	N/A	A-1+
30,000,000	TD BANK, N.A., 0.33, 07/01/14 ⁽²⁾	0.33	30,000,000	30,000,000	N/A	A-1+
65,000,000	TD BANK, N.A., 0.40, 07/01/14 ⁽²⁾	0.40	65,000,000	65,000,000	N/A	A-1+
30,000,000	TD BANK, N.A., 0.40, 07/01/14 ⁽²⁾	0.40	30,000,000	30,000,000	N/A	A-1+
100,000,000	WEBSTER BANK, 0.25, 07/01/14 ⁽²⁾⁽⁸⁾	0.25	100,000,000	100,000,000	N/A	A-2
\$ 1,630,000,000			\$ 1,630,000,000	\$ 1,630,000,000		

CONNECTICUT STATE TREASURER'S SHORT-TERM INVESTMENT FUND

LIST OF INVESTMENTS AT JUNE 30, 2014 (Continued)

Par Value	Security (Coupon, Maturity or Reset Date)	Yield %	Amortized Cost	Fair Value	Asset ID	Quality Rating
BANK COMMERCIAL PAPER (7.72% OF TOTAL INVESTMENTS)						
\$ 125,000,000	US BANK, N.A., 0.13, 07/01/14 ⁽²⁾	0.13	\$ 125,000,000	\$ 125,000,000	N/A	A-1+
200,000,000	US BANK, N.A., 0.13, 07/01/14 ⁽²⁾	0.13	200,000,000	200,000,000	N/A	A-1+
\$ 325,000,000			\$ 325,000,000	\$ 325,000,000		
GOVERNMENT MONEY MARKET FUND (6.74% OF TOTAL INVESTMENTS)						
\$ 150,000,000	MORGAN STANLEY GOVT FUND, 0.04, 07/01/14	0.04	\$ 150,000,000	\$ 150,000,000	N/A	AAAm
133,637,446	WESTERN ASSET MGMT FUND, 0.04, 07/01/14	0.04	133,637,446	133,637,446	N/A	AAAm
\$ 283,637,446			\$ 283,637,446	\$ 283,637,446		
\$4,205,741,446	TOTAL INVESTMENT IN SECURITIES		\$ 4,208,753,819	\$ 4,209,135,179		

Fund Net Asset Value = \$1.012 per unit ⁽⁴⁾

Effective 7-Day Net Yield = 0.16% ⁽⁵⁾

Effective 7-Day Gross Yield = 0.20%

WAM^(R) = 40 Days ⁽⁶⁾

WAM^(F) = 99 Days ⁽⁷⁾

- (1) Securities rounded to the nearest dollar.
- (2) Issue has a daily put option, and thus is calculated as 1 day for WAL and WAM purposes.
- (3) Issue has a weekly put option, and thus is calculated as 7 day for WAL and WAM purposes.
- (4) Includes designated surplus reserve.
- (5) Includes approximately 4 basis points of expenses and a 10 basis point contribution to the designated surplus reserve each day the size of the reserve is less than one percent of the size of the Short-Term Investment Fund.
- (6) Weighted average maturity to the next reset date.
- (7) Weighted average maturity to final maturity date.
- (8) Santander Bank, Webster Bank, and Peoples Bank deposits are backed by irrevocable standby letter of credit provided by the Federal Home Loan Banks of Boston and Pittsburg guaranteeing principal amount.

CONNECTICUT STATE TREASURER'S SHORT-TERM INVESTMENT FUND

SCHEDULE OF MANAGEMENT FEES AT JUNE 30, 2014

<u>Category</u>	<u>Amount</u>
Internal Management Fees	\$1,603,879
Professional & Other Miscellaneous Expenses	<u>377,369</u>
Total:	<u>\$1,981,248</u>

Note: Amounts shown expenses paid during the fiscal year. Internal management fees include payroll, lease service, subscriptions, supplies, telephone and other. External professional fees include custodian and investor services.

CONNECTICUT STATE TREASURER'S SHORT-TERM INVESTMENT FUND

SCHEDULE OF PARTICIPANTS BY CONCENTRATION AT JUNE 30, 2014

Type	Number of Accounts	Fair Value
Municipal and Local Entities	475	\$ 716,188,027
State Treasury	58	1,205,529,749
State Agencies and Authorities	<u>341</u>	<u>2,239,167,008</u>
Total	<u>874</u>	<u>\$4,160,884,785</u>

Participant Net Asset Value, Offering Price and Redemption Price
per Share (\$4,160,884,785 in Net Assets divided by 4,160,884,785) \$ 1.00

Note: Does not include designated surplus reserve or realized gain from sale of securities.

Investment Policy

As adopted August 21, 1996 and revised June 16, 2008 and April 17, 2009.

A. Background

The Treasurer's Short-Term Investment Fund (STIF) is an investment pool of high-quality, short-term money market instruments for state and local governments. Operating since 1972 in a manner similar to a money market mutual fund, STIF's purpose is to provide a safe, liquid and effective investment vehicle for the operating cash of the State Treasury, state agencies and authorities, municipalities, and other political subdivisions of the state.

All State, local and political subdivisions of the State are authorized to invest in STIF by (CGS) 3-27a and 3-27b.

B. Purpose

The purpose of this document is to specify the policies and guidelines that provide for the systematic management of STIF and the prudent and productive investment of funds.

C. Investment Objectives

STIF seeks as high a level of current income as is consistent with, first, the safety of principal invested by the State, municipalities and others, and, second, the provision of liquidity to meet participants' daily cash flow requirements.

D. Safety of Principal

Safety of principal, STIF's primary objective, shall be pursued in a number of ways.

1. Investments shall be undertaken in a manner that seeks to ensure the preservation of capital in the overall portfolio by protecting against credit risks (from security defaults) and the erosion of market prices (from rising interest rates).
2. The Fund's investments shall be made in conformance with prudent guidelines for allowable instruments, credit quality and maturities. See Section H.
3. STIF shall maintain adequate diversification of instruments, issuers, industries and maturities to protect against significant losses from credit risks and market changes. See Section H.
4. All securities shall be held by a third-party custodian.
5. All transactions shall be handled on the basis of delivery vs. payment to a custodian bank.
6. All repurchase agreements shall be fully collateralized, with a custodian bank receiving delivery of the collateral.
7. Reverse repurchase agreements may be used only to meet temporary liquidity requirements of the Fund and may not exceed five percent of total Fund assets. See Section H.
8. STIF shall maintain a designated surplus reserve to provide an added layer of security. For the period June through November 1996 a pro-rated allocation to the reserve will be paid from investment returns that will equal, on an annualized basis, one-tenth of one percent of the fund's total investments until the reserve equals one percent of investments. Effective December 1, 1996, daily allocations to the designated surplus reserve will be paid from investment returns and will equal, on an annualized basis, one-tenth of one percent of the fund's investments until the reserve equals one percent of investments. If net losses significant to the aggregate portfolio are realized, they shall be charged against the designated surplus reserve, as discussed in Section Q. This reserve has never been drawn upon in STIF's 24-year history.*

* Subsequent to the adoption of this policy, the reserves were drawn upon once in 2008 during the financial crisis without affecting the fund's \$1.00 per share net asset value or the loss of principal to any investor. In addition, STIF's AAAM rating was not affected during this period.

While STIF — which consists predominantly of funds for which the Treasurer is sole trustee — is managed diligently to protect against losses from credit and market changes, and though deposits are backed by high-quality and highly-liquid short-term securities, the Fund is not insured or guaranteed by any government and the maintenance of capital cannot be fully assured.

E. Liquidity

The portfolio shall be structured through sufficient investments in overnight and highly-marketable securities to allow complete liquidity for participants. In addition, reverse repurchase agreements totaling up to five percent of Fund assets may be used to meet temporary liquidity requirements.

Participants have full and quick access to all of their funds. Participants may make same-day (up to 10:30 a.m.) deposits and withdrawals of any size. Withdrawals generally are sent via Fed wire, thus funds are available for use on the day of withdrawal.

In addition, deposits and withdrawals may be made through the ACH system on a next-day basis, deposits may be made by check through the mail, and withdrawals may be made by check. No transaction fees are charged on deposits or withdrawals by wire or ACH. Withdrawals by check are charged a fee, as specified in the participant manual.

F. Yield

STIF's investment portfolio shall be designed to attain a market-average rate of return throughout budgetary and economic cycles, taking into account investment risk constraints and the liquidity requirements of the Fund.

The portfolio shall be managed with the objective of exceeding the average of three-month U.S. Treasury Bill rates for the equivalent period. This index is considered a benchmark for near-riskless investment transactions and, therefore, comprises a minimum standard for the portfolio's rate of return. The investment program shall seek to augment returns above this threshold, consistent with stated risk limitations and prudent investment principles.

While STIF shall not make investments for the purpose of trading or speculating as the dominant criterion, STIF shall seek to enhance total portfolio return through active portfolio management. The prohibition on speculative investments precludes pursuit of gain or profit through unusual risk. Trading in response to changes in market value or market direction, however, is warranted under active portfolio management.

G. Prudence

Investments shall be made with the care, skill, prudence, and diligence — under circumstances then prevailing — that prudent persons acting in like capacities and familiar with such matters would use in the conduct of an enterprise of a like character and with like aims, not for speculation, but for investment, considering the probable safety of their capital as well as the probable income to be derived.

The standard of prudence to be used by STIF's investment officials shall be the "prudent expert" standard and shall be applied in the context of managing an overall portfolio. Investment officers acting in accordance with written procedures and the investment policy and exercising due diligence shall be relieved of personal responsibility for an individual security's credit risk or market price changes, provided deviations from expectations are reported in a timely fashion in writing and appropriate action is taken to control adverse developments.

H. Investment Guidelines

All investments must be made in instruments authorized by CGS 3-27c - 3-27e. In addition, the Treasurer has adopted the investment guidelines that follow. Unless otherwise indicated, references to credit ratings are to those of Standard & Poor's.

1. STIF may invest in the following securities:
 - a. Instruments issued, guaranteed or insured by the U.S. government or federal agencies.
 - b. Certificates of deposit of commercial banks in the United States whose short-term debt is rated at least A-1 and TBW-1 (by Thomson Bank Watch) and whose long-term debt is rated at least A- and C (by Thomson Bank Watch).

CONNECTICUT STATE TREASURER'S SHORT-TERM INVESTMENT FUND

- c. Certificates of deposit of U.S. branches of foreign banks with short-term debt ratings of at least A-1 and TBW-1 and long-term debt ratings of at least A and B/C (by Thomson Bank Watch).
 - d. Bankers' acceptances of those banks meeting the criteria in b. and c. above.
 - e. Fully-collateralized repurchase agreements with primary dealers of the Federal Reserve with short-term debt ratings of at least A-1, or qualified domestic commercial banks meeting the criteria in b. above, with possession of collateral by a custodian bank.
 - f. Commercial paper of companies that have short-term debt rated at least A-1 and P-1 (by Moody's) and long-term debt rated at least AA- and Aa3 (by Moody's).
 - g. Corporate or asset-backed securities rated at least A-1/P-1 and AA-/Aa3.
 - h. Asset-backed securities with maturities of under one year rated at least A-1/P-1.
 - i. Money market mutual funds or similar investment pools, comprised of securities permitted under this investment policy and managed to maintain a constant share value, rated AAAm.
 - j. A line of credit of up to \$100 million with the Connecticut Student Loan Foundation. Any resulting loans shall be fully collateralized (at 102 percent) by student loans with interest and principal 98 percent federally guaranteed.
 - k. The portfolio currently includes securities issued by the State of Israel, which mature in less than six years, and which, in the aggregate, total less than .5 percent of the portfolio value. These notes' interest rates are reset semi-annually at the prime rate minus 50 basis points. These securities, as currently structured, will not be purchased in the future.
 - l. Notwithstanding the approved investments enumerated above, STIF may hold securities or other assets received as a result of a restructuring of securities that were, when originally purchased, among the list of approved investments set forth herein, following consultation with an outside investment advisor. The Treasurer will notify investors of such situations within two (2) business days of the receipt of such securities or assets.
2. Reverse repurchase agreements, in the aggregate, may not exceed five percent of net assets at the time of execution. While any reverse repurchase agreement is outstanding, new investments must match the maturity of the shortest-term outstanding reverse repurchase agreement. Reverse repurchase agreements are to be used only to meet temporary liquidity requirements of the Fund.
 3. No investments may be made in "derivative" securities such as futures, swaps, options, interest-only and principal-only mortgage-backed securities, inverse floaters, CMT floaters, leveraged floaters, dual index floaters, COFI floaters, and range floaters. These types of securities can experience high price volatility with changing market conditions, and their market values may not return to par even at the time of an interest rate adjustment.

Investments may be made in adjustable rate securities whose interest rates move in the same direction and in the same amount as standard short-term money market interest rate benchmarks, such as Fed Funds, LIBOR, Treasury bills, one-month CDs, one-month commercial paper and the prime rate, and conform with STIF's other credit and maturity standards. Interest rate reset periods may not exceed six months. The values of these securities tend to return to par upon the scheduled adjustment of interest rates. Some parties in the financial services industry consider these types of adjustable rate securities to be derivatives, others do not.

U.S. Treasury Separate Trading of Registered Interest and Principal Securities ("STRIPS") are not considered derivatives and may be purchased. These instruments are subject to the same interest rate risks as U.S. Treasury securities of the same duration. STRIPS are fundamentally different from mortgage-backed and other interest-only or principal-only securities that are subject to unscheduled prepayments of principal.

4. All investments must be made in U.S. dollar-denominated securities.
5. The dollar-weighted average portfolio maturity (including interest rate reset periods) may not exceed 90 days. Individual maturities may not exceed five years.

6. STIF shall diversify its investments to avoid incurring unreasonable risks inherent in overinvesting in specific instruments, industry segments, individual issuers or maturities. Diversification strategies shall include:
 - a. At the time of purchase, no more than five percent of the overall portfolio may be invested in an individual security, other than overnight or two-business-day repurchase agreements and U.S. government and agency securities.
 - b. At the time of purchase, no more than 10 percent of the overall portfolio may be invested in securities of a single bank or corporation, other than overnight or two-business-day repurchase agreements and U.S. government and agency securities.
 - c. There is no limitation on the percentage of assets that may be invested in securities of the United States government, its agencies or instrumentalities, or in overnight or two-business-day repurchase agreements.
 - d. At the time of purchase, no more than 25 percent of the overall portfolio may be invested in any industry other than the financial services industry.
 - e. At the time of purchase, no more than 50 percent of the overall portfolio may be invested in the combined total of commercial paper and non-asset-backed corporate notes.
 - f. At the time of purchase, no more than 20 percent of the overall portfolio may be invested in floating rate securities with final maturities in excess of two years.
 - g. At the time of purchase, no more than five percent of the overall portfolio may be invested in an individual money market mutual fund or similar investment pool.
 - h. At the time of purchase, no more than 10 percent of the overall portfolio may be invested in money market mutual funds and similar investment pools.
 - i. At the time of purchase, investments in securities that are not readily marketable, other than securities that mature within seven days, may not exceed 10 percent of the fund's overall portfolio.
 - j. At least 75 percent of the overall portfolio shall be invested in securities rated A-1+ or in overnight repurchase agreements with dealers or banks rated A-1.
7. The Treasurer intends to operate STIF in such a manner as to maintain its AAAM credit rating from Standard & Poor's, or a similar rating from another nationally-recognized credit rating service recognized by the State Banking Commissioner.
8. Investment decisions shall be based on the relative and varying yields and risks of individual securities and the Fund's liquidity requirements.

I. Interest Payments

Effective December 1, 1996:

STIF declares and accrues investor interest daily based on actual STIF earnings (including gains and losses), less expenses and transfers to the designated surplus reserve. Interest is paid monthly through direct distribution or reinvestment. Earned rates are available on a next-day basis. All rates are calculated and quoted on the basis of the actual number of days in a year (an "actual-over-actual" basis) and reported in accordance with guidelines of the Association for Investment Management and Research (AIMR).

J. Administrative Costs

STIF is provided to participants without sales or management fees. Administrative costs are paid from investment earnings, and all STIF participants (including the state and local entities) share in covering the Fund's expenses in proportion to the size of their investments. Costs have run at between two and three basis points (or \$2-3 per \$10,000 invested).

K. Delegation of Authority

The Short-Term Investment Unit within the Treasury's Cash Management Division manages STIF's investments. Deposits, withdrawals, participant record-keeping and the distribution of interest are handled by State Street Bank and Trust under the supervision of the STIF Administration Unit within the Treasury's Cash Management Division.

L. Daily Confirmations

Confirmations of daily deposits and withdrawals are sent the day after the transaction.

M. Monthly Statements

Monthly statements of balances, account activity, and paid interest are mailed to participants by the 10th day of each month.

N. Reports

Quarterly and annual reports describing STIF's yields, performance relative to its primary benchmark (IBC First Tier Institutions-Only Rated Money Fund Index), and investments shall be provided to all participants. A detailed portfolio listing, data on 90-day Treasury bills and 90-day certificates of deposit, and commentary on economic conditions shall be provided with each report. The reports are available on the World Wide Web at: <http://www.state.ct.us/ott>

O. Participant Manual

A manual describing STIF's operating procedures, instructions for opening and closing accounts and making deposits and withdrawals, and methods of distributing interest, is provided to all participants. There currently are no restrictions on the size or number of accounts or transactions.

P. Audit

The Auditors of Public Accounts audit STIF's financial statements and operating procedures annually. Copies of audit opinions and reports will be provided to all participants.

Q. Portfolio Valuation

STIF's values and yields are accounted for on an amortized-cost basis. Market values of all securities, except for those securities listed in Sections H.1.j and H.1.k, above, are calculated on a weekly basis. Significant deviations of market values to amortized costs shall be reported as follows:

1. **First Level Notification.** If the market value of the overall investment portfolio, based on reports from the custodian, drops below 99.75 percent of the amortized cost value of the overall investment portfolio, or if the ratio of the market value of the overall portfolio to the outstanding participant units drops below 100.50 percent, the Principal Investment Officer would notify the Assistant Treasurer for Cash Management, the Assistant Treasurer for Pension Funds Management, and the Treasurer's Investment Committee at the first weekly meeting following such determination.
2. **Second Level Notification.** If the market value of the overall investment portfolio, based on reports from the custodian, drops below 99.50 percent of the amortized cost value of the overall investment portfolio, or if the ratio of the market value of the overall portfolio to the outstanding participant units drops below 100.25 percent, the Principal Investment Officer would notify, as soon as practical, the Treasurer, Deputy Treasurer, Assistant Treasurer - Chief of Staff, Assistant Treasurer for Cash Management, Assistant Treasurer for Pension Funds Management, and the Treasurer's Investment Committee. The Treasurer's Investment Committee would then meet in special session to review the circumstances surrounding the fall in one or both ratios, and it would review every security held by the fund. If this second level notification resulted from a significant increase in fund size that resulted in a proportionate decrease in the relative size of the designated surplus reserve, then portfolio or other changes may not be required. If this second level notification resulted from the decline in market values of securities, then the Investment Committee would consider selling securities that had fallen in value and making use of the designated surplus reserve.

3. Investor Notification. If the ratio of the market value of the overall portfolio to the outstanding participant units drops below 99.75 percent, the Treasurer would notify all STIF investors of the situation and the actions being undertaken to protect against further reductions.

R. Internal Controls

The Treasury shall establish and maintain a system of internal controls, which shall be documented in writing. The internal controls shall be reviewed by the Auditors of Public Accounts. The controls shall be designed to prevent and control losses of public funds arising from fraud, employee error, misrepresentation by third parties, or imprudent actions by employees and officers.

S. Cash Management Advisory Board

STIF's investment practices and performance, including the documentation discussed in Section N, shall be reviewed on a quarterly basis by the Treasurer's Cash Management Advisory Board.

T. Financial Dealers and Institutions

The STIF Investment Officer shall develop criteria for selecting brokers and dealers. All repurchase agreement transactions will be conducted through primary dealers of the Federal Reserve Bank of New York rated at least A-1 and qualified banks (as defined in Sections H.1.b and H.1.c) which have executed master repurchase agreements with the Treasury.

U. Ethics

Officers and employees involved in the investment process shall refrain from personal business activity that could conflict with proper execution of the investment program, or which could impair their ability to make impartial investment decisions. Employees and investment officials shall disclose in writing to the Treasurer, or the Treasurer's compliance officer, any material financial interests in financial institutions that conduct business with STIF, and they shall further disclose any large personal financial/investment positions that could be related to the performance of STIF's portfolio, particularly with regard to the time of purchases and sales.

V. Bond Proceeds

Bond proceeds may be deposited in STIF. Accounting and arbitrage rebate calculations are the responsibility of participants. STIF's investment program is not designed to restrict yield in order to avoid arbitrage rebates.

W. Conformance with Guidelines

A nationally-recognized credit rating service recognized by the State Banking Commissioner shall monitor the STIF portfolio on a weekly basis to determine compliance with this policy. The Auditors of Public Accounts review compliance annually.

X. Conformance with National Standards

These guidelines, together with the participant manual, were designed to meet the July 1995 guidelines of the National Association of State Treasurers for local government investment pools.

Y. Investment Guideline Revisions

These guidelines may be revised by the Treasurer due to market changes or regulatory, legislative or internal administrative initiatives. Attempts will be made to provide all STIF investors with at least 30 days of notice before any changes to the investment policy become effective.

The Treasurer reserves the right to make changes immediately to respond to market conditions. In such circumstances, revisions will be sent to all STIF investors within two business days of the revision.

GLOSSARY OF TERMS

Agency Securities - Securities issued by U.S. Government agencies, such as the Federal Home Loan Bank. These securities have high credit ratings but are not backed by the full faith and credit of the U.S. Government.

Asset Backed Notes - Financial instruments collateralized by one or more types of assets including real property, mortgages, and receivables.

Banker's Acceptance (BA) - A high-quality, short-term negotiable discount note, drawn on and accepted by banks which are obligated to pay the face amount at maturity.

Basis Point (bp) - The smallest measure used in quoting yields or returns. One basis point is 0.01% of yield, 100 basis points equals 1%. A yield that changed from 8.75% to 9.50% increased by 75 basis points.

Benchmark - A standard unit used as the basis of comparison; a universal unit that is identified with sufficient detail so that other similar classifications can be compared as being above, below, or comparable to the benchmark.

Capital Gain(Loss) - Also known as capital appreciation(depreciation), capital gain(loss) measures the increase(decrease) in value of an asset over time.

Certificates of Deposit (CDs) - A debt instrument issued by banks, usually paying interest, with maturities ranging from seven days to several years.

Commercial Paper - Short-term obligations with maturities ranging from 1 to 270 days. They are issued by banks, corporations, and other borrowers to investors with temporarily idle cash.

Compounded Annual Total Return - Compounded annual total return measures the implicit annual percentage change in value of an investment, assuming reinvestment of dividends, interest, and realized capital gains, including those attributable to currency fluctuations. In effect, compounded annual total return "smoothes" fluctuations in long-term investment returns to derive an implied year-to-year annual return.

Consumer Price Index (CPI) - A measure of change in consumer prices, as determined by a monthly survey of the U.S. Bureau of Labor Statistics. Components of the CPI include housing costs, food, transportation, electricity, etc.

Cumulative Rate of Return - A measure of the total return earned for a particular time period. This calculation measures the absolute percentage change in value of an investment over a specified period, assuming reinvestment of dividends, interest income, and realized capital gains. For example, if a \$100 investment grew to \$120 in a two-year period, the cumulative rate of return would be 20%.

Derivative - Derivatives are generally defined as contracts whose value depends on, or derives from, the value of an underlying asset, reference rate, or index. For example, an option is a derivative instrument because its value derives from an underlying stock, stock index, or future.

Discount Rate - The interest rate that the Federal Reserve charges banks for loans, using government securities or eligible paper as collateral.

Expense Ratio - The amount, expressed as a percentage of total investment, that shareholders pay for mutual fund operating expenses and management fees.

Federal Funds Rate - The interest rate charged by banks with excess reserves at a Federal Reserve district bank to banks needing overnight loans to meet reserve requirements. The federal funds rate is one of the most sensitive indicators of the direction of interest rates since it is set daily by the market.

Federal Reserve Board - The governing body of the Federal Reserve System (12 regional Federal banks monitoring the commercial and savings banks in their regions). The board establishes FRS policies on such key matters as reserve requirements and other regulations, sets the discount rate, and tightens or loosens the availability of credit in the economy.

Gross Domestic Product - Total final value of goods and services produced in the United States over a particular period or time, usually one year. The GDP growth rate is the primary indicator of the health of the economy.

GLOSSARY OF TERMS

Index - A benchmark used in executing investment strategy which is viewed as an independent representation of market performance. An index implicitly assumes cost-free transactions; some assume reinvestment of income. Example: S&P 500 index.

Inflation - A measure of the rise in price of goods and services, as happens when spending increases relative to the supply of goods on the market, i.e. too much money chasing too few goods.

Investment Income - The equity dividends, bond interest, and/or cash interest paid on an investment.

Liability - The claim on the assets of a company or individual - excluding ownership equity. The obligation to make a payment to another.

Market Value - The price at which buyers and sellers trade similar items in an open marketplace. Stocks are considered liquid and are therefore valued at a market price. Real estate is illiquid and valued on an appraised basis.

Master Custodian - An entity, usually a bank, used as a place for safekeeping of securities and other assets. The bank is also responsible for many other functions which include accounting, performance measurement, and securities lending.

Maturity Date - The date on which the principal amount of a bond or other debt instrument becomes payable or due.

MFR Index (Formerly IBC) - An index which represents an average of the returns of institutional money market mutual funds that invest primarily in first-tier (securities rated A-1, P-1) taxable securities.

Money Market Fund - An open-ended mutual fund that invests in commercial paper, bankers' acceptances, repurchase agreements, government securities, certificates of deposit, and other highly liquid and safe securities and pays money market rates of interest. The fund's net asset value remains a constant \$1 per share - only the interest rate goes up or down.

Moody's (Moody's Investors Service) - A financial services company which is one of the best known bond rating agencies in the country. Moody's investment grade ratings are assigned to certain municipal short-term debt securities, classified as MIG-1, 2, 3, and 4 to signify best, high, favorable, and adequate quality, respectively. All four are investment grade or bank quality.

Net Asset Value (NAV) - The total assets minus liabilities, including any valuation gains or losses on investments or currencies, and any accrued income or expense. NAV is similar to Shareholders' Equity.

Par Value - The stated or face value of a stock or bond. It has little significance for common stocks, however, for bonds it specifies the payment amount at maturity.

Principal - Face value of an obligation, such as a bond or a loan, that must be repaid at maturity.

Prudent Expert Rule - The standard adopted by some entities to guide those fiduciaries with responsibility for investing money of others. Such fiduciaries must act as a prudent expert would be expected to act, with discretion and intelligence, to seek reasonable income, preserve capital, and, in general, avoid speculative investment. This is a higher standard than the "prudent person" rule.

Realized Gain (Loss) - A gain (loss) that has occurred financially. The difference between the principal amount received and the cost basis of an asset realized at sale.

Relative Volatility - A ratio of the standard deviation of the Fund to the standard deviation of its selected benchmark. A relative volatility greater than 1.0 suggests comparatively more volatility in Fund returns than those of the benchmark.

Repurchase Agreements ("Repos") - An agreement to purchase securities from an entity for a specified amount of cash and to resell the securities to the entity at an agreed upon price and time. Repos are widely used as a money market instrument.

Reverse Repurchase Agreements ("Reverse Repos") - An agreement to sell securities to an entity for a specified amount of cash and to repurchase the securities from the entity at an agreed upon price and time.

GLOSSARY OF TERMS**S&P Ratings -**

AAA - Debt having the highest rating assigned by Standard & Poor's. It has the highest capacity to pay interest and its ability to repay principal is extremely strong.

AA - Debt having a very strong capacity to pay interest and repay principal. AA rated debt differs from the higher rated issues by only a small degree.

A - Debt which has a strong capacity to pay interest and repay principal although it is somewhat more susceptible to the adverse effects of change in circumstances and economic conditions than debt in higher rated categories.

BBB - Debt regarded as having an adequate capacity to pay interest and repay principal. BBB is the lowest rating assignable to investment grade securities. Although debt rated BBB normally exhibits adequate protection parameters, adverse economic conditions or changing circumstances are more likely to lead to weakened capacity to pay interest and repay principal for debt in this category than in higher rated categories.

BB, B, CCC, and CC - These ratings are regarded, on balance, as predominantly speculative with respect to capacity to pay interest and repay principal in accordance to the terms of the obligation.

C - These ratings are reserved for income bonds on which no interest is being paid.

D - These ratings are for debt which is in default. No interest or repayment of principal is being paid.

Soft Dollars - The value of research or other services that brokerage houses and other service entities provide to a client "free of charge" in exchange for the client's business.

Standard Deviation - A statistical measure showing the deviation of an individual value in a probability distributed from the mean (average) of the distribution. The greater the degree of dispersion from the mean rate of return, the higher the standard deviation; therefore, the higher the risk.

Treasury Bill (T-Bill) - Short-term, highly liquid government securities issued at a discount from the face value and returning the face amount at maturity.

Treasury Bond or Note - Debt obligations of the Federal government that make semiannual coupon payments and are sold at or near par value in denominations of \$1,000 or more.

Turnover - The minimum of security purchases or sales divided by the fiscal year's beginning and ending market values for a given portfolio.

Unrealized Gain (Loss) - A profit (loss) that has not been realized through the sale of a security. The gain (loss) is realized when a security or futures contract is actually sold or settled.

Variable Rate Note - Floating rate notes with a coupon rate adjusted at set intervals, such as daily, weekly, or monthly, based on different interest rate indices, such as LIBOR, Fed Funds, and Treasury Bills.

Volatility - A statistical measure of the tendency of a market price or yield to vary over time. Volatility is said to be high if the price, yield, or return typically changes dramatically in a short period of time.

Yield - The return on an investor's capital investment.



Statistical

Section



STATISTICAL SECTION

This part of the Short-Term Investment Fund's (STIF's) Comprehensive Annual Financial Report presents detailed information as a context for understanding what the information in the financial schedules and other supplementary information say about the overall financial health of STIF. The schedules within this statistical section comply with the requirements of GASB 44.

Financial Trends

These schedules contain the ten-year trend information on the financial performance of STIF.

<u>Schedule</u>	<u>Pages</u>
o Schedule of rates of return	46-47

Revenue Capacity

Revenue capacity is not applicable to STIF.

Borrowing Capacity

Section H 2. of the Short-Term Investment Fund's Investment Policy allow the fund to utilize reverse repurchase agreements to meet temporary liquidity requirements of the fund. The following statistics outline STIF's borrowing capacity as of June 30, 2014.

<u>Description</u>	<u>Amount</u>
Outstanding borrowing	\$0
Maximum borrowing amount	Five percent of total assets
Collateral requirement	Must be collateralized at a minimum of 100 percent

Demographic and Economic Information

These schedules show the breakdown between state and municipal funds, growth of the fund and rate information.

<u>Schedule</u>	<u>Page</u>
o Participant units under management	48
o Monthly and annual comparative yields	49

Operating Information

The summary of operations schedule outlines the expenses, additions and deductions associated with the management of STIF.

<u>Schedule</u>	<u>Page</u>
o Changes in Net Position	50
o Distributions to participants	51

Sources: Unless otherwise noted, the information in these schedules is derived from the Comprehensive Annual Financial Reports for the relevant year. STIF implemented Statement 34 in Fiscal Year 2005.

CONNECTICUT STATE TREASURER'S SHORT-TERM INVESTMENT FUND

SCHEDULE OF ANNUAL RATES OF RETURN

	Year Ended June 30,									
	2014	2013	2012	2011	2010	2009	2008	2007	2006	2005
STIF Total Rate of Return (%)	0.14	0.16	0.16	0.23	0.34	1.49	4.13	5.54	4.38	2.32
MFR Index (%)⁽¹⁾	0.02	0.05	0.05	0.08	0.09	1.30	4.07	5.14	4.01	1.91
Total Assets in STIF, End of Period (\$ - Millions)	4,211	4,477	4,894	4,494	4,582	4,548	5,054	5,004	5,430	4,314
Percent of State Assets in Fund	83	83	83	84	84	81	83	80	84	84
Number of Participant Accounts in Composite, End of Year⁽²⁾										
State Treasury	58	67	52	52	51	47	39	47	58	84
Municipal and Local Entities	475	685	674	660	656	608	637	578	542	548
State Agencies and Authorities	341	428	429	417	416	367	418	406	406	446
Total	874	1,180	1,155	1,129	1,123	1,022	1,094	1,031	1,066	1,078

- (1) Represents iMoneyNet's First Tier Institutional-only Rated Money Fund Report Averages™- MFR Index. These Index rates have been taken from published sources.
- (2) As of January 2014 and going forward, inactive accounts were closed and only active accounts containing balances were included in the total number of participant accounts.

CONNECTICUT STATE TREASURER'S SHORT-TERM INVESTMENT FUND

SCHEDULE OF QUARTERLY RATES OF RETURN

FISCAL YEAR	Rate of Return(%)	iMoneyNet Money Fund Averages™ (MFR) Index(%)⁽¹⁾	FISCAL YEAR	Rate of Return(%)	iMoneyNet Money Fund Averages™ (MFR) Index(%)⁽¹⁾
2014			2009		
Sep-13	0.03	0.005	Sep-08	0.58	0.58
Dec-13	0.03	0.005	Dec-08	0.47	0.45
Mar-14	0.04	0.005	Mar-09	0.26	0.17
Jun-14	0.04	0.005	Jun-09	0.16	0.09
YEAR	0.14	0.02	YEAR	1.49	1.30
2013			2008		
Sep-12	0.05	0.02	Sep-07	1.34	1.27
Dec-12	0.05	0.02	Dec-07	1.24	1.19
Mar-13	0.03	0.01	Mar-08	0.90	0.92
Jun-13	0.03	0.01	Jun-08	0.59	0.62
YEAR	0.16	0.05	YEAR	4.13	4.07
2012			2007		
Sep-11	0.04	0.01	Sep-06	1.36	1.26
Dec-11	0.06	0.01	Dec-06	1.38	1.26
Mar-12	0.03	0.02	Mar-07	1.33	1.26
Jun-12	0.03	0.02	Jun-07	1.36	1.26
YEAR	0.16	0.05	YEAR	5.54	5.14
2011			2006		
Sep-10	0.06	0.03	Sep-05	0.89	0.80
Dec-10	0.06	0.02	Dec-05	1.05	0.93
Mar-11	0.06	0.02	Mar-06	1.12	1.05
Jun-11	0.05	0.01	Jun-06	1.25	1.17
YEAR	0.23	0.08	YEAR	4.38	4.01
2010			2005		
Sep-09	0.11	0.04	Sep-04	0.38	0.29
Dec-09	0.09	0.02	Dec-04	0.53	0.41
Mar-10	0.06	0.01	Mar-05	0.64	0.54
Jun-10	0.06	0.02	Jun-05	0.77	0.67
YEAR	0.34	0.09	YEAR	2.32	1.91

(1) Represents iMoneyNet's First Tier Institutional-only Rated Money Fund Report Averages™- (MFR) Index. These Index rates have been taken from published sources.

CALCULATION OF RATES OF RETURN

STIF uses a time-weighted linked rate of return formula to calculate rates of return. Other methods may produce different results and the results for individual participants and different periods may vary. The current rates of return may not be indicative of future rates of return.

The time-weighted linked rate of return formula used by STIF is as follows: Monthly returns are calculated by taking the sum of daily income earned on an accrual basis, after deduction for all operating expenses and a transfer to the Designated Surplus Reserve, divided by the average daily participant balance for the month.

The rates of return presented herein are those earned by the Fund during the periods presented as described above.

CONNECTICUT STATE TREASURER'S SHORT-TERM INVESTMENT FUND

PARTICIPANT UNITS UNDER MANAGEMENT

<u>Date</u>	<u>Municipal</u>	<u>State*</u>	<u>Total</u>	<u>Variance</u>
6/2014	\$716,188,027	\$3,444,696,758	\$4,160,884,785	-6.02%
6/2013	746,279,063	3,681,000,173	4,427,279,236	-8.64
6/2012	818,542,160	4,027,669,000	4,846,211,160	8.95
6/2011	692,390,571	3,755,769,181	4,448,139,752	-2.09
6/2010	731,333,009	3,811,810,110	4,543,143,119	0.63
6/2009	836,895,704	3,677,900,952	4,514,796,656	-10.16
6/2008	853,181,810	4,172,196,059	5,025,377,869	1.46
6/2007	1,007,813,533	3,945,011,848	4,952,825,381	-7.99
6/2006	842,346,535	4,540,395,185	5,382,741,720	26.05
6/2005	662,638,019	3,607,739,707	4,270,377,726	12.75

* State includes State Treasury, agencies and authorities.

CONNECTICUT STATE TREASURER'S SHORT-TERM INVESTMENT FUND

MONTHLY COMPARATIVE YIELDS

	STIF	Benchmarks^(b)	
	Earned Rate ^(a)	iMoneyNet Money Fund Average™ MFR Index ^(b)	Fed. Reserve Three Mo. T-Bill
06/2014	0.16%	0.02%	0.04%
05/2014	0.15	0.02	0.03
04/2014	0.15	0.02	0.03
03/2014	0.16	0.02	0.05
02/2014	0.16	0.02	0.05
01/2014	0.15	0.02	0.04
12/2013	0.15	0.02	0.07
11/2013	0.12	0.02	0.07
10/2013	0.14	0.02	0.05
09/2013	0.07	0.02	0.02
08/2013	0.10	0.02	0.04
07/2013	0.16	0.02	0.04
06/2013	0.18	0.02	0.05

ANNUAL COMPARATIVE YIELDS

	STIF	Benchmarks^(b)	
	Earned Rate ^(a)	iMoneyNet Money Fund Average™ MFR Index ^(b)	Fed. Reserve Three Mo. T-Bill
2014	0.14%	0.02%	0.04%
2013	0.16	0.05	0.08
2012	0.16	0.05	0.05
2011	0.23	0.08	0.12
2010	0.34	0.09	0.12
2009	1.49	1.30	0.54
2008	4.13	4.07	2.91
2007	5.54	5.14	5.01
2006	4.38	4.01	4.15
2005	2.32	1.91	2.25

(a) Actual earnings less expenses and transfers to reserves.

(b) Represents iMoneyNet Money Fund Average™ - Rated First Tier Institutional Average (MFR) Index. These Index rates have been taken from published sources.

CONNECTICUT STATE TREASURER'S SHORT-TERM INVESTMENT FUND

CHANGES IN NET POSITION LAST TEN FISCAL YEARS (dollars in millions)

	Fiscal Year									
	2014	2013	2012	2011	2010	2009	2008	2007	2006	2005
Additions										
Net investment income	\$8.9	\$11.1	\$12.7	\$17.3	\$21.2	\$74.9	\$208.2	\$287.2	\$217.9	\$96.6
Net Realized gain	0.1	0.0	0.2	0.1	0.3	0.6	0.0	0.2	0.0	0.0
Net decrease in fair value of investments	0.0	0.0	0.0	0.0	0.0	0.0	(24.0)	0.0	0.0	0.0
Purchase of units by participants	11,719.0	11,187.4	10,802.0	12,771.0	14,549.7	15,586.4	14,455.6	13,710.3	13,308.2	12,857.1
Total additions to net position	11,728.0	11,198.5	10,814.8	12,788.4	14,571.2	15,662.0	14,639.8	13,997.7	13,526.1	12,953.7
Deductions										
Operating expenses	(2.0)	(1.5)	(1.3)	(1.2)	(1.2)	(1.3)	(1.1)	(1.2)	(1.3)	(1.1)
Income distributed to investors (Notes 2 and 6)	(6.3)	(7.3)	(7.6)	(11.3)	(15.6)	(69.7)	(205.2)	(282.3)	(212.7)	(93.8)
Redemption of units by participants	(11,985.1)	(11,606.6)	(10,406.5)	(12,863.3)	(14,521.3)	(16,097.0)	(14,383.1)	(14,140.3)	(12,195.8)	(12,374.2)
Total deductions from net position	(11,993.4)	(11,615.4)	(10,415.4)	(12,875.8)	(14,538.1)	(16,168.0)	(14,589.4)	(14,423.8)	(12,409.8)	(12,469.1)
Change in net position	(\$265.4)	(\$416.9)	\$399.4	(\$87.4)	\$33.1	(\$506.0)	\$50.4	(\$426.1)	\$1,116.3	\$484.6
Net Position - Beginning of Period	\$4,476.7	\$4,893.6	\$4,494.2	\$4,581.6	\$4,548.5	\$5,054.5	\$5,004.1	\$5,430.2	\$4,313.9	\$3,829.3
Net Position - End of Period	\$4,211.3	\$4,476.7	\$4,893.6	\$4,494.2	\$4,581.6	\$4,548.5	\$5,054.5	\$5,004.1	\$5,430.2	\$4,313.9
Designated Surplus Reserve Transfer	\$0.7	\$2.3	\$4.0	\$4.9	\$4.7	\$4.6	\$1.9	\$3.8	\$3.9	\$1.7
Designated Surplus Reserve Transfer Balance*	\$50.3	\$49.7	\$47.4	\$43.4	\$38.5	\$33.7	\$29.1	\$51.3	\$47.4	\$43.5

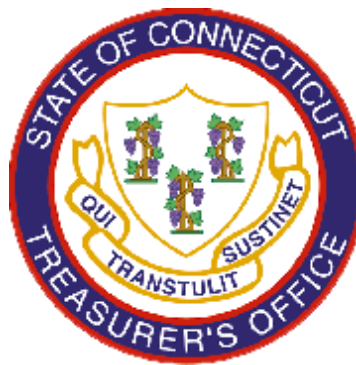
* Net of designated reserve transfer contributions and expenses.

Note: Details may not add to totals due to rounding.

CONNECTICUT STATE TREASURER'S SHORT-TERM INVESTMENT FUND

DISTRIBUTIONS TO PARTICIPANTS

Distributions:	2014	2013	2012	2011	2010	2009	2008	2007	2006	2005
July	\$589,887	\$715,741	\$690,438	\$940,472	\$1,804,102	\$9,552,900	\$23,237,650	\$24,345,190	\$12,263,547	\$4,488,148
August	407,061	698,925	741,866	1,002,183	1,766,231	10,885,593	26,051,672	27,564,817	14,624,900	5,455,631
September	271,572	884,348	709,215	996,828	1,652,063	10,020,904	24,381,386	25,645,680	15,299,129	6,113,181
October	552,704	721,930	1,018,729	928,080	1,435,864	8,382,261	23,109,275	23,994,071	15,278,679	6,591,446
November	489,583	825,425	754,162	993,506	1,244,871	6,870,533	19,591,395	21,300,897	14,525,210	6,268,350
December	572,477	684,328	665,569	1,031,156	1,348,631	5,624,806	15,941,753	20,518,091	14,839,019	6,750,839
January	607,051	608,181	438,608	1,003,165	1,179,381	4,289,444	16,365,735	22,743,650	17,249,274	8,060,413
February	568,172	454,326	473,242	995,211	936,966	3,477,010	14,164,444	22,710,701	17,972,895	8,336,789
March	591,688	336,432	482,688	939,497	1,020,218	3,477,312	12,867,724	23,294,961	21,840,530	9,919,350
April	550,054	333,745	651,575	871,218	1,022,252	2,679,262	10,148,379	23,423,230	22,581,575	10,410,745
May	577,896	349,361	437,660	827,009	1,125,441	2,592,339	10,362,416	24,433,435	23,888,854	11,009,094
June	530,908	706,145	494,015	771,681	1,036,174	1,846,634	8,962,975	22,370,027	22,283,125	10,424,248
Total Distribution to Participants	\$6,299,050	\$7,318,887	\$7,557,767	\$11,300,006	\$15,572,194	\$69,698,998	\$205,184,804	\$282,344,750	\$212,646,678	\$93,828,235



Office of the State Treasurer
LIST OF PRINCIPAL OFFICIALS AND PHONE NUMBERS

Denise L. Nappier

Treasurer, State of Connecticut

Tel: (860) 702-3010

Fax: (860) 702-3043

Christine Shaw

Deputy Treasurer

Tel: (860) 702-3211

Fax: (860) 728-1290

Lee Ann Palladino

Chief Investment Officer
Pension Funds Management

Tel: (860) 702-3229

Fax: (860) 702-3042

Laura Jordan

Assistant Treasurer
Policy

Tel: (860) 702-3163

Fax: (860) 524-9470

Lawrence A. Wilson

Assistant Treasurer
Cash Management

Tel: (860) 702-3126

Fax: (860) 702-3041

Maria M. Greenslade

Assistant Deputy Treasurer
Second Injury Fund and Unclaimed Property

Tel: (860) 702-3125

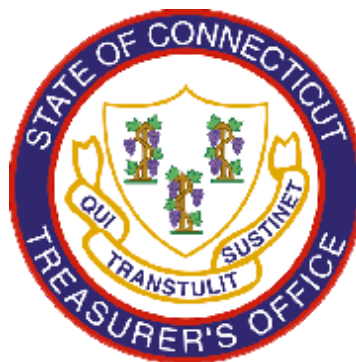
Fax: (860) 702-3021

Sarah K. Sanders

Assistant Treasurer
Debt Management

Tel: (860) 702-3288

Fax: (860) 702-3034



CONNECTICUT STATE TREASURY

**55 Elm Street
Hartford, CT 06106-1773
Tel: (860) 702-3000
www.otf.ct.gov**