

Broadband Mapping in CT

David Lukens (David.lukens@ct.gov)

Broadband Mapping Coordinator

GIS Office / Office of Policy and Management

Broadband Mapping in Connecticut

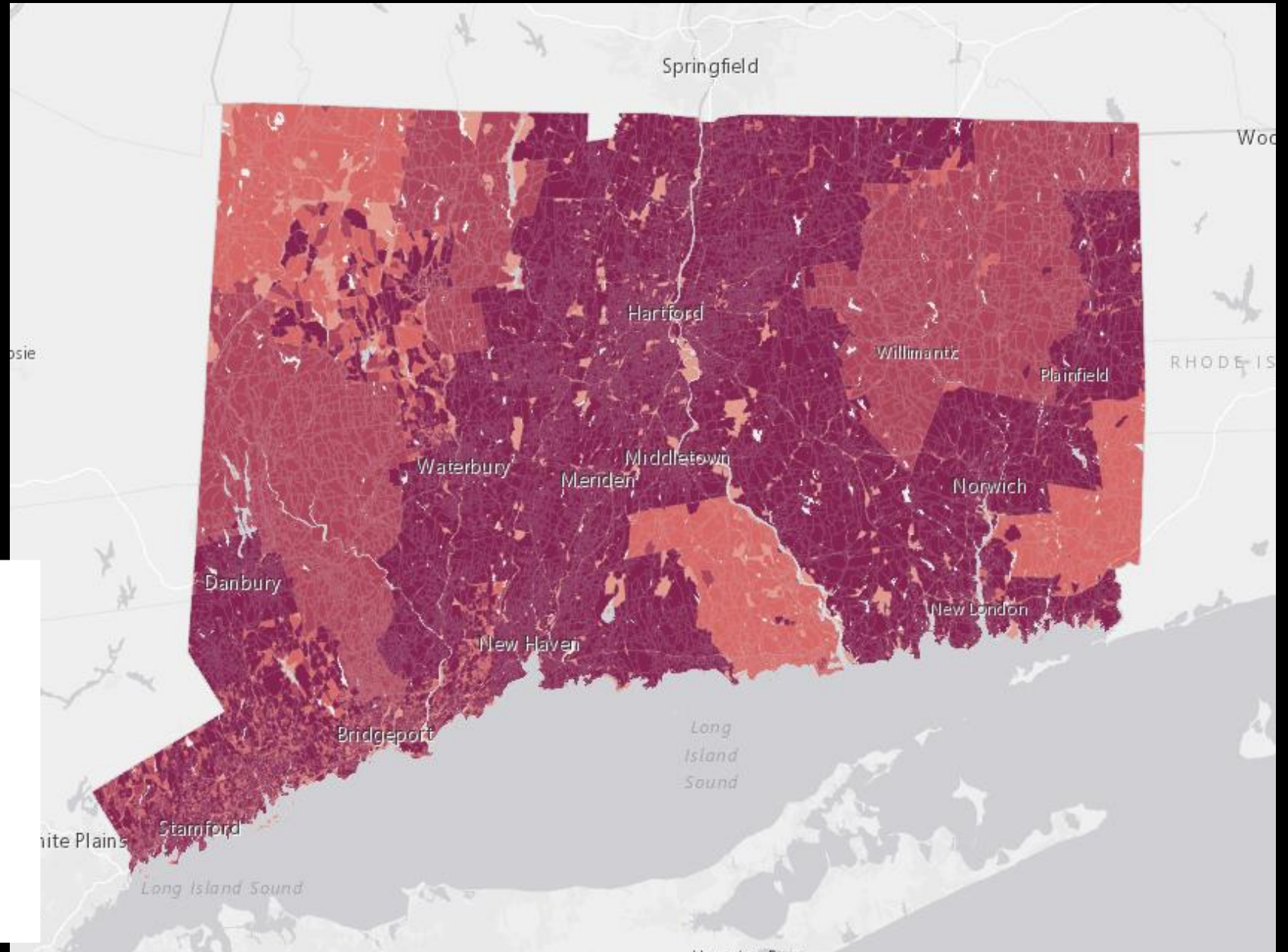
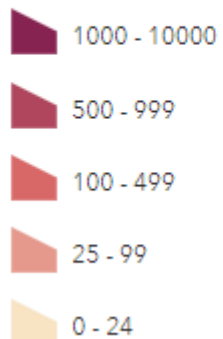
- An Act Concerning Equitable Access to Broadband (Public Act No. 21-159)
 - Creation of a state broadband map to effectively distribute funding and promote broadband access in areas of need throughout CT
 - State broadband map based on ISP data AND “credible and relevant data”
 - Engagement of all stakeholders is imperative to ensure an accurate and equitable representation of the state of broadband access, adoption, and use in Connecticut

FCC 477

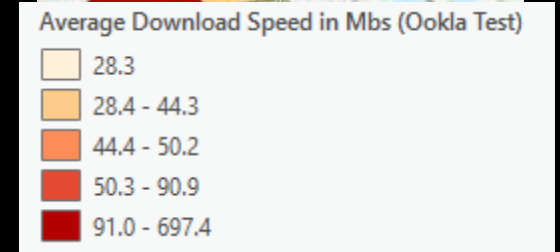
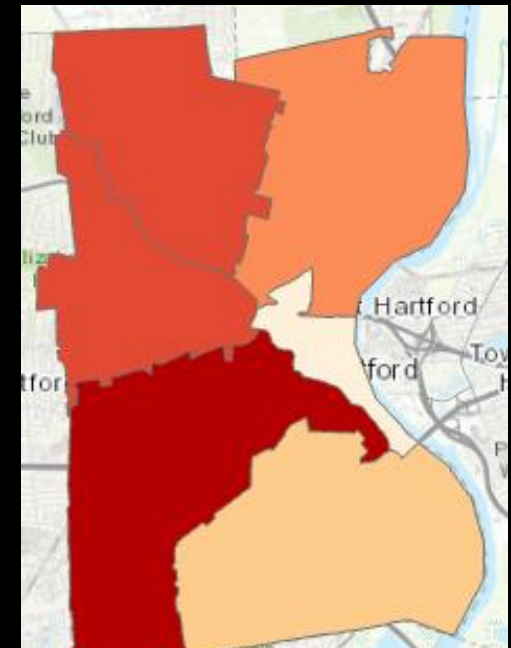
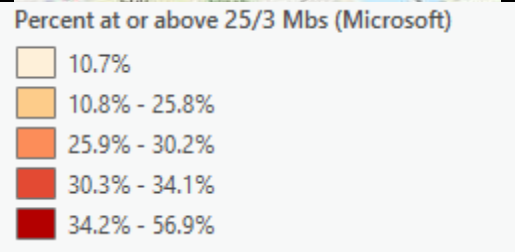
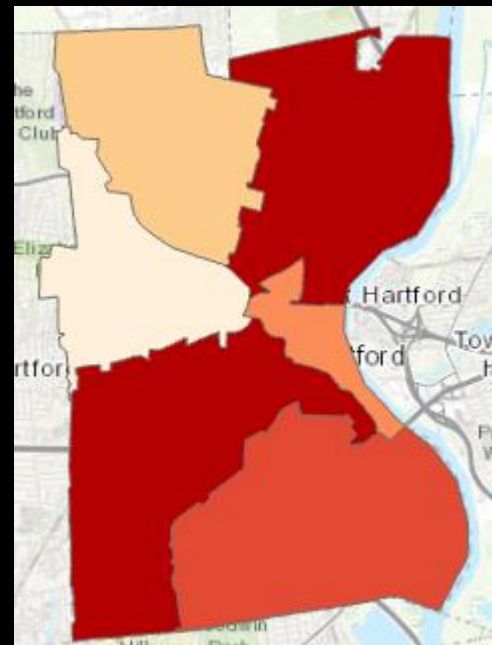
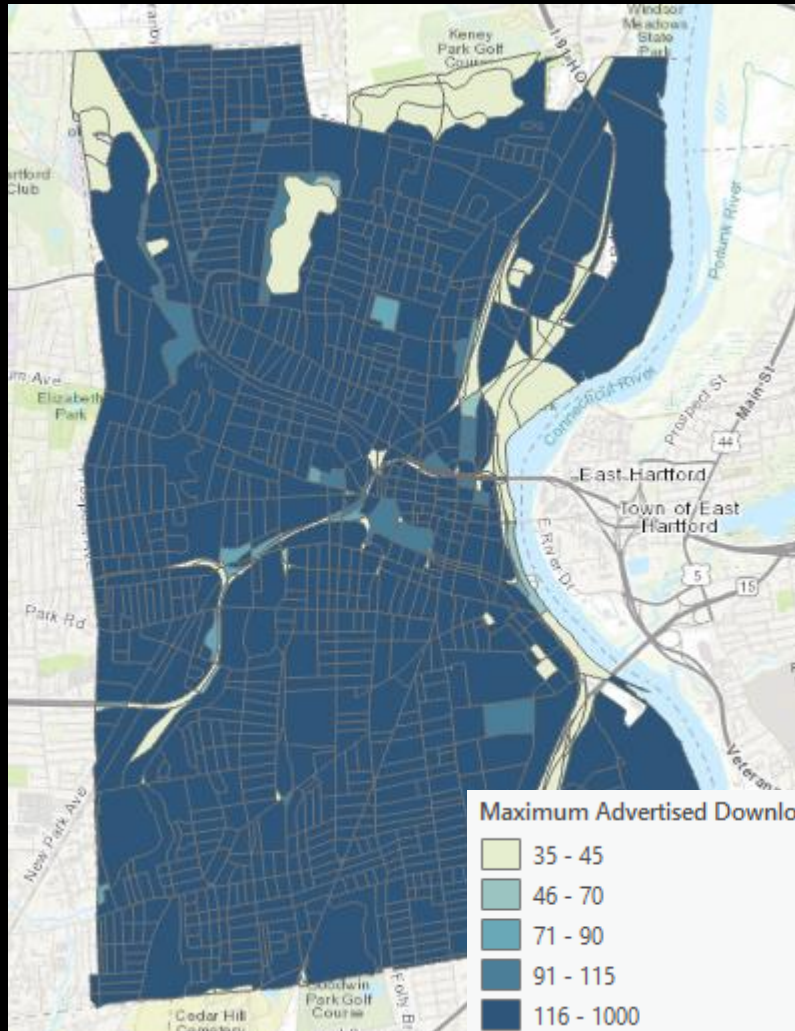
- FCC data is the primary means by which broadband access and investments in infrastructure has been judged in the past

Maximum Advertised Download Speed (2020)

Maximum Advertised Download Speed (2020)



Hartford



To see this data across our state with explanations of data sets visit:

<https://storymaps.arcgis.com/stories/0a80a455496b452b8229061444913261>

- Problems

- FCC data marks every census block with even one house with access as covered
- Existing FCC data does not account for:
 - Affordability
 - In-premise connections
 - Inadequate customer service

- Solutions

- Address-level data through data collection with ISPs and local stakeholders to corroborate ISP data
- Data collection to better demonstrate
 - Limited low-cost plans
 - Challenges with connecting older, multi-family homes
 - Impact of differentiated customer service

Survey

- To improve our understanding of areas with limited broadband access due to poor service or affordability issues, the GIS Office is asking NRZ representatives to answer a short questionnaire.

<https://arcg.is/9DnLn>

NRZ Broadband Report

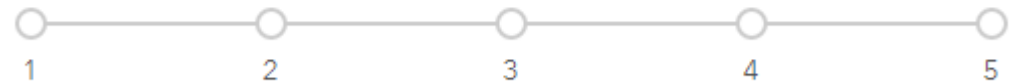
This short questionnaire is to gauge the interest of neighborhood revitalization zones with working with the GIS Office to collect data on broadband availability and adoption in your communities.

What NRZ do you represent?*

Please write this as "City, NRZ." Example: "Bridgeport, South End"

How important are broadband and connectivity issues to your community?

Please use the scale below with five being the greatest importance.



What are the most important issues related to broadband adoption in your community?

Rank the following issues in importance to improving access to quality broadband service in your community.

Targeted Data Collection

- If you are interested in working with the GIS office, we will work together to create targeted surveys and data collection methods to most effectively get at the connectivity challenges in your community.

Grant Opportunities

- Kevin Pisacich – Director, Office of Telecommunications and Broadband
- American Rescue Plan Act (ARPA)
 - Curb-to-home
- Infrastructure Investment and Jobs Acts (IIJA)
 - Broadband Equity, Access, and Deployment (BEAD) Program

Questions or Comments?

GIS Office Contact Information:

David Lukens – Broadband Mapping Coordinator

David.lukens@ct.gov

Thank you!