

OPM - Criminal Justice Policy & Planning Division

Monthly Indicators Report

Highlights

- On November 1, 2015, 16,028 people were incarcerated in Connecticut prisons and jails. One year ago there were 16,605 prisoners in the state.
- This paper has reported on the large drop in the number of young people incarcerated in the state in recent years. Statewide arrests have also declined dramatically in recent years. This is particularly true for young people. Between 2008 and 2014, the number of 15- to 19-year olds arrested in the state fell by 54% (see chart 2a)
- During the last year, the number of pre-trial detainees dropped by 6%. The drop was most pronounced among detainees with very low bonds. The number of pre-trial prisoners held on bonds under \$20,000, for example, fell from 698 to 546, a 22% decline (see table 5).
- Last month, this paper reported that almost 50% of offenders discharged to special parole in 2012 and 2013 were back in prison within a year; most were returned for technical violations. Additional analysis revealed that the average special parolee, remanded for a technical violation in 2011 spent 215 days in prison before their re-release. The large volume of remands and a dearth of detailed, descriptive information associated with these remands, makes it difficult to evaluate the effectiveness of existing remand policies.

To have the Monthly Indicators Report sent to you electronically each month. Please email: opm.mir@ct.gov In the subject line write: Send Monthly

Prison Population Forecast

As projected, the prison population remained relatively flat over the past two months. If historic, seasonal-trends trends still hold, we will soon witness a decline in the prison population through the end of the year. OPM still believes that the DOC could see its population reduced by approximately 400 inmates by year's end.

Assuming the prison population does decline by that much, we should not lose sight of the fact that these late-year drops are always followed by a rebound in the prison count during January. The amplitude of that January bounce is often predictive of volatility in the size of the prison population over the coming year.

OPM will be working on a new 12-month forecast, to be published next February, that will set monthly expectations for the prison population through February 2017. We know that the prison population has been dropping rather consistently since 2008. We also know that fewer young people are being admitted into the prison system each year. The Parole Board is beginning to increase the volume of hearings and, in the past year, the release process has been streamlined. The impact of all of these factors will be considered in the new forecast. In many ways understanding the mechanics of the prison population today requires more knowledge, science and nuance than it did in the recent past.

TABLE 1 – Prison Population Forecast

	Avg. Daily Count	OPM 2015 Forecast	Inmate difference
JAN '15	16,204	-	-
FEB	16,302	16,343	41
MAR	16,124	16,136	12
APR	16,161	16,079	(82)
MAY	16,093	16,052	(41)
JUN	16,121	16,039	(82)
JUL	16,006	16,061	55
AUG	16,160	16,078	(82)
SEP	16,143	16,085	(58)
OCT	16,094	16,117	23
NOV	16,038	16,112	74
DEC	-	15,948	-
JAN '16	-	15,686	-
FEB	-	15,917	-

Avg. Daily Count (ADC) for 1st week of month

Chart 1 – Actual prison population against the OPM forecasts
January 1, 2014 through February 1, 2016

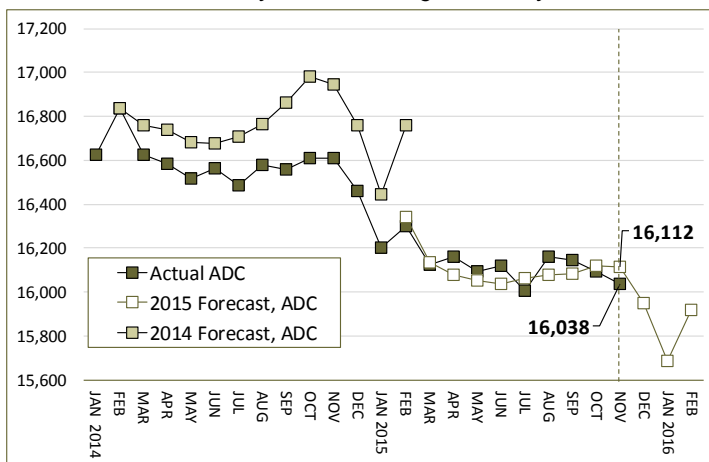
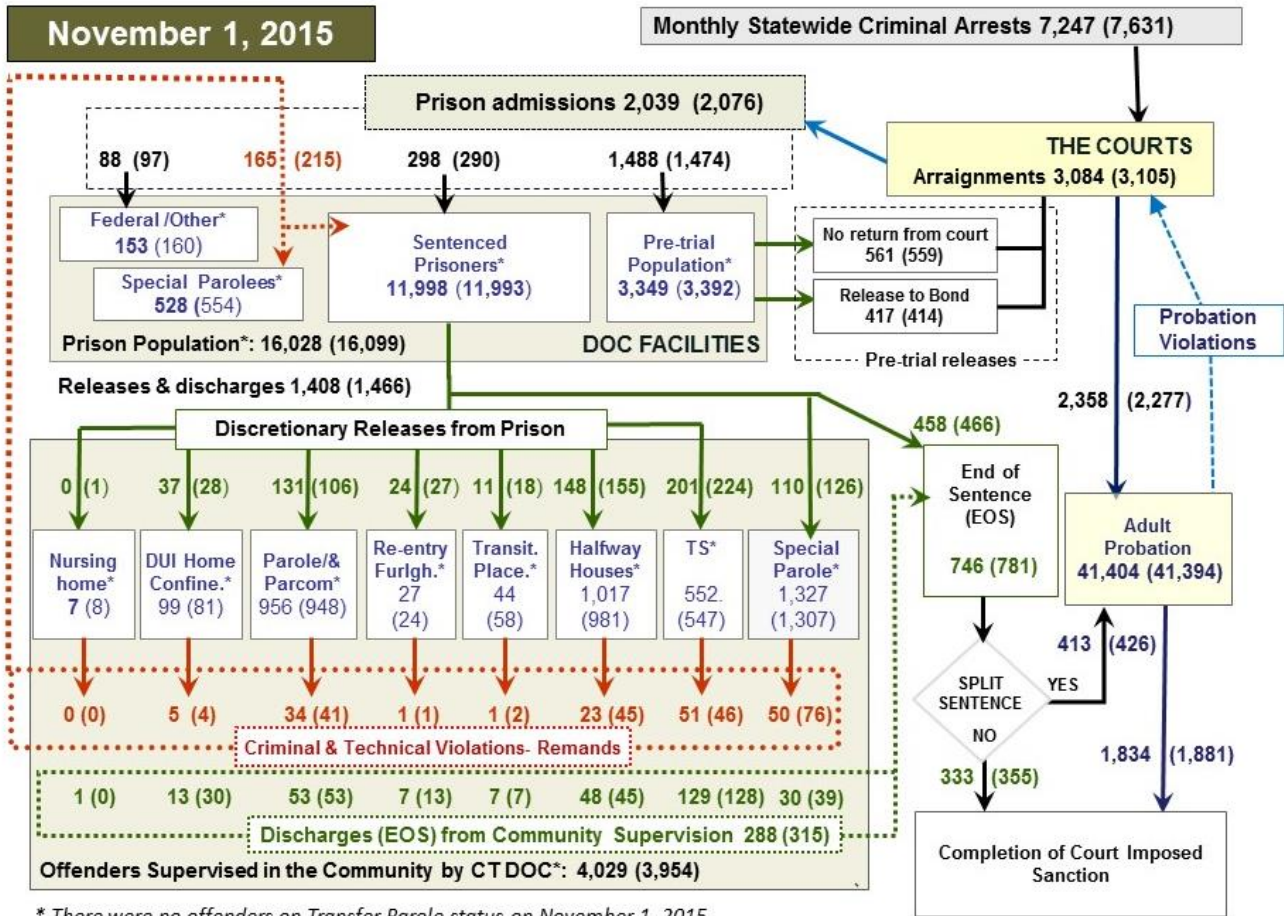


Chart 2 - Criminal justice, monthly counts and flows



* There were no offenders on Transfer Parole status on November 1, 2015.

Chart 2 contains monthly, operation data for October 2015 and daily counts reported on November 1, 2015. Asterisks (*) indicate the daily count on November 1st. Last month's figures are enclosed by parentheses. Sources: Arrests - OBTS, Court and probation data - CSSD, all other data - CT DOC.

Chart 2a – CT youth and the criminal justice system

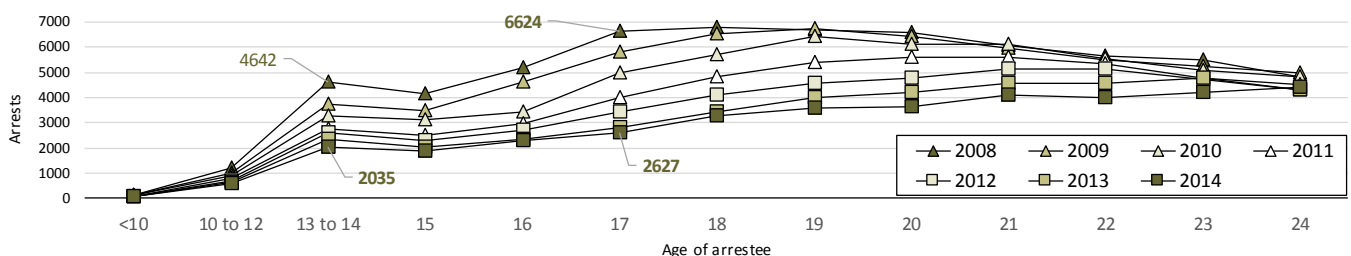


Chart 2a plots statewide, juvenile and adult arrest age for the years 2008 through 2014. The data was compiled from "Crime in Connecticut" reports published annually by the CT State Police (online at: <http://www.dpsdata.ct.gov/dps/ucr/ucr.aspx>).

The chart reveals that arrests of young people are down considerably since 2008. In 2008, for example, 6,624 17-year olds were arrested in CT. That number has declined in every year since. In 2014, only 2,627 17-year olds were arrested, an astounding 60% reduction in six years. The reason for these declines is still being debated. Citing brain development science, Gov. Malloy, this month, called for a conversation focused on raising the age of juvenile jurisdiction to

21, and alternative ways to handle offenders who are under the age of 25. Although a number of states use hybrid sentencing schemes for offenders under age 25, no state has considered raising the juvenile age above 18.

We have already seen a dramatic drop in young people imprisoned in the state (see Monthly Indicators Report, July 2015). Although the long-term implications of these proposed changes are difficult to predict at this time, Connecticut's recent experience raising the juvenile jurisdiction age from 16 to 18 has demonstrated the potential for both reducing crime and significantly affecting the adult prison population.

Table 2 – The first-of-the-month totals

	2015	2015	2015	2014	% Change	
	Sept. 1	Oct. 1	Nov. 1	Nov. 1	Monthly	Annual
DOC Facilities						
Federal/Other	157	160	153	227	-4.4%	-32.6%
Sentenced	12,064	11,993	11,998	12,372	0.0%	-3.0%
Special Parole	544	554	528	422	-4.7%	25.1%
Pre-trial	3,403	3,392	3,349	3,584	-1.3%	-6.6%
Total	16,168	16,099	16,028	16,605	-0.4%	-3.5%
DOC Community						
Transfer Parole	0	0	0	0	-	-
Parole/ Parcom Total	958	948	956	936	0.8%	2.1%
Parole	786	774	778	774	0.5%	0.5%
Parcom @ CT	172	174	178	162	2.3%	9.9%
Furlough	37	24	27	12	-	-
Trans Placement	62	58	44	82	-24.1%	-46.3%
DUI/Home confine.	88	81	99	79	22.2%	25.3%
Halfway House Total	982	981	1,017	962	3.7%	5.7%
Comm Release	603	589	586	709	-0.5%	-17.3%
TS	65	51	54	24	5.9%	125.0%
Parole	121	133	148	63	11.3%	134.9%
Transfer Parole	0	0	0	0	-	-
Special Parole	103	208	229	166	10.1%	38.0%
TS Total	505	547	552	579	0.9%	-4.7%
Nursing home	8	8	7	7	-	-
Special Parole	1,318	1,307	1,327	1,234	1.5%	7.5%
Total	3,958	3,954	4,029	3,891	1.9%	3.5%

Table 3 – Admissions, releases & discharges*

	2015	2015	2015	2014	% Change	
	August	Sept.	Oct.	Oct.	Monthly	Annual
Admissions						
Federal/Other	102	97	88	153	-9.3%	-42.5%
Remands	137	215	165	175	-23.3%	-5.7%
DUI	1	4	5	5	-	-
Parole	22	41	34	26	-17.1%	30.8%
Trans Plac/Furlough	5	3	2	3	-	-
HWH	28	45	23	42	-48.9%	-45.2%
TS	38	46	51	46	10.9%	10.9%
Special Parole	43	76	50	53	-34.2%	-5.7%
New Sentence	248	290	298	286	2.8%	4.2%
VOP	85	92	106	95	15.2%	11.6%
Pre-trial	1,570	1,474	1,488	1,645	0.9%	-9.5%
Total	2,057	2,076	2,039	2,259	-1.8%	-9.7%
Releases and discharges						
Transfer Parole	0	0	0	0	-	-
Parole	116	106	131	112	23.6%	17.0%
Furlough	28	27	24	17	-11.1%	41.2%
Trans. Placement	13	18	11	14	-38.9%	-21.4%
Home Confinement DUI	27	28	37	28	32.1%	32.1%
HWH	168	155	148	145	-4.5%	2.1%
TS	174	224	201	163	-10.3%	23.3%
Special Parole	101	126	110	105	-12.7%	4.8%
Nursing home	0	1	0	0	-	-
End of Sentence	724	781	746	840	-4.5%	-11.2%
Total	1,351	1,466	1,408	1,424	-4.0%	-1.1%
Pre-trial Releases*						
No return from Court	571	559	561	583	0.4%	-3.8%
Release to Bond	404	414	417	502	0.7%	-16.9%

* Totals reflect events, not individual offenders

Table 3a – Community Release Unit metrics

	Reviewed	Approved	Denied	Continued	Approval Rate
Aug.	770	402	134	97	52%
Sept.	983	489	140	156	50%
Oct.	867	394	148	143	45%

Board of Pardons and Paroles

Table 4 – Parole hearings, new cases

	Parole Hearings	Paroles granted, 2015	Paroles Grant rate	Paroles granted, 2014	Paroles granted, 2013
Aug.	196	123	63%	141	124
Sept.	196	109	56%	151	128
Oct.	178	93	52%	125	110

Table 4a – Other Parole Board actions

	Reparole from revocation	Reparole from rescission	Closed interest cases	Special parole cases
Aug.	47	3	18	37
Sept.	53	3	53	53
Oct.	53	6	32	36

The pre-trial population

Table 5 – Bond ranges for pre-trial detainees

Bond amount	Sept. 1, 2015	Oct. 1, 2015	Nov. 1, 2015	Nov. 1, 2014
Less than \$20K	624	601	546	698
\$20K to <\$50K	577	581	606	611
\$50K to <\$100K	710	745	723	782
\$100K or higher	1,444	1,531	1,524	1,519
Offenders w/bonds	3,355	3,458	3,399	3,610
Over \$1M	173	180	178	204

Table 5a – Pre-trial, weeks since admission

Weeks since last DOC admit	Sept. 1, 2015	Oct. 1, 2015	Nov. 1, 2015	Nov. 1, 2014
< 1 week	461	485	495	476
1 to < 3 weeks	369	419	372	403
3 to < 10 weeks	961	889	920	981
10 to < 30 weeks	867	967	942	1,040
30 wks or more	704	703	677	715
Pre-trial prisoners	3,362	3,463	3,463	3,615

Table 5b – Pre-trial admits, new offenders

	July 2015	August 2015	Sept. 2015	Oct. 2015
Arraignments	3,294	3,069	3,105	3,084
Pre-trial Admits	1,611	1,570	1,474	1,488
New to DOC	415	409	398	413
% New	26%	26%	27%	28%

Court Support Services Division

Table 6 – The Jail Re-interview Program

	Pre-trial admissions	Offender interviews	Offenders released	Releases last year
August	1,570	1,953	887	834
Sept.	1,474	1,892	911	897
Oct.	1,488	1,885	896	706

Table 6a – Pre-Trial & split-sentence starts

	Pre-trial Bail Case Starts	Client Supv. Starts	Split Sentence Starts
Aug.	2,440	2,205	398
Sept.	2,450	2,277	426
Oct.	2,523	2,358	413

Note: Figures published here are based on operational data available at publication. Data in subsequent issues may not agree.

Chart 3 – Prison population

First week of the month, and ADC

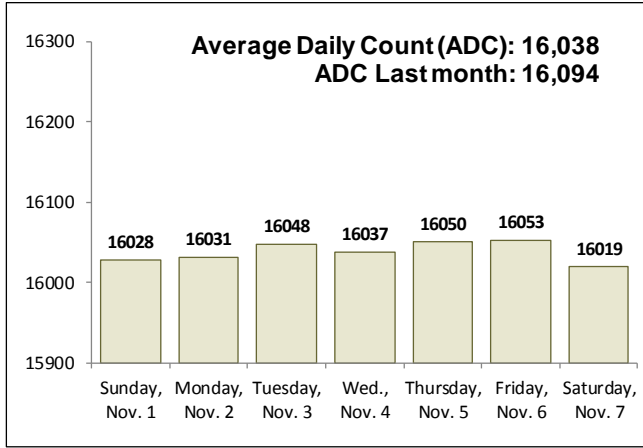


Chart 6 – Monthly DOC Admissions

August 2014 through October 2015

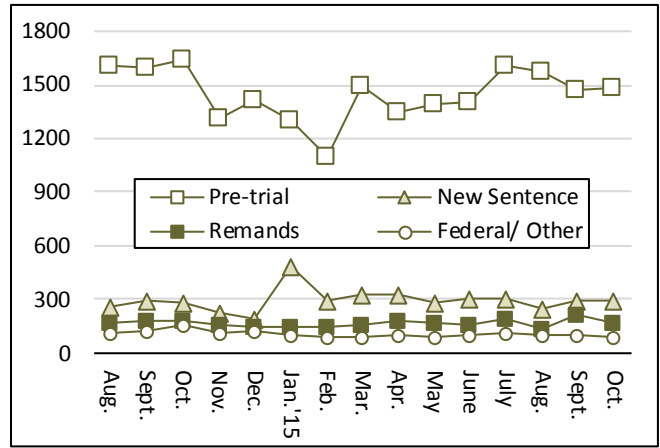


Chart 4 – Prison population, first-of-month

2013, 2014 and 2015

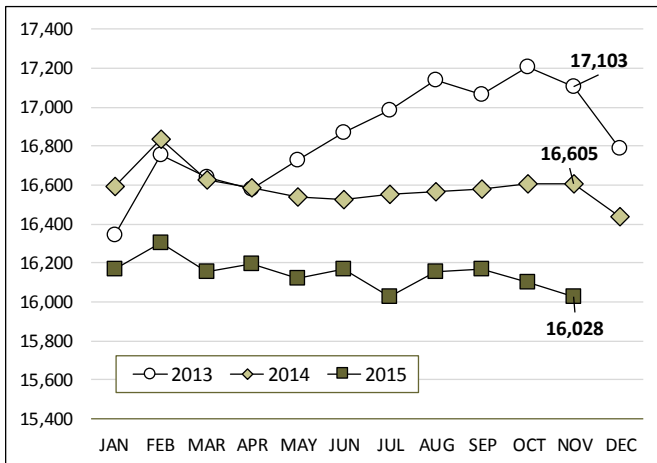


Chart 7– Remands from community release

October 2015

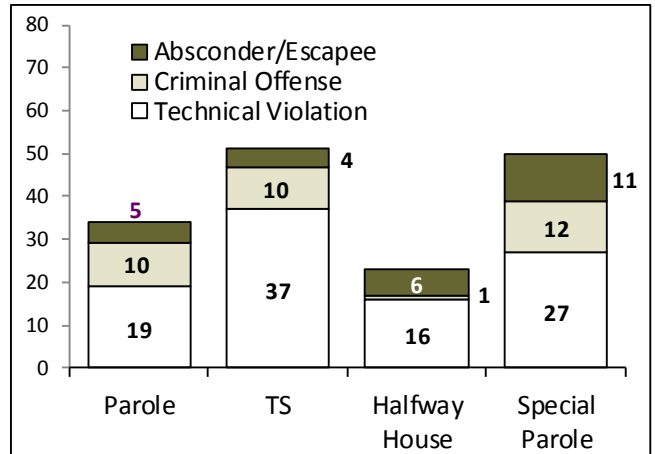


Chart 5 – Statewide criminal arrests

2014 and 2015

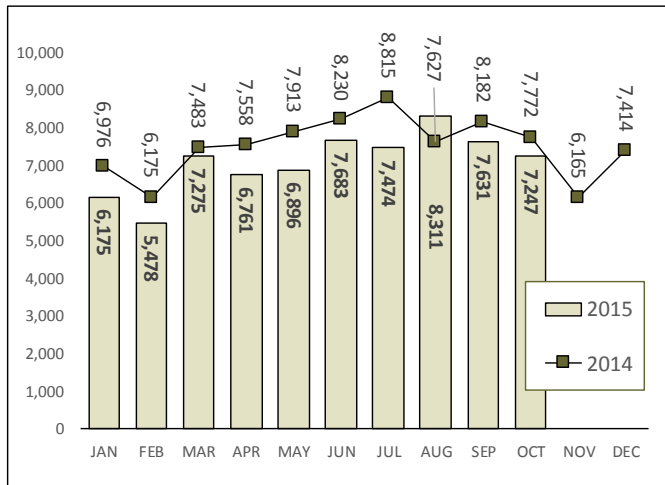
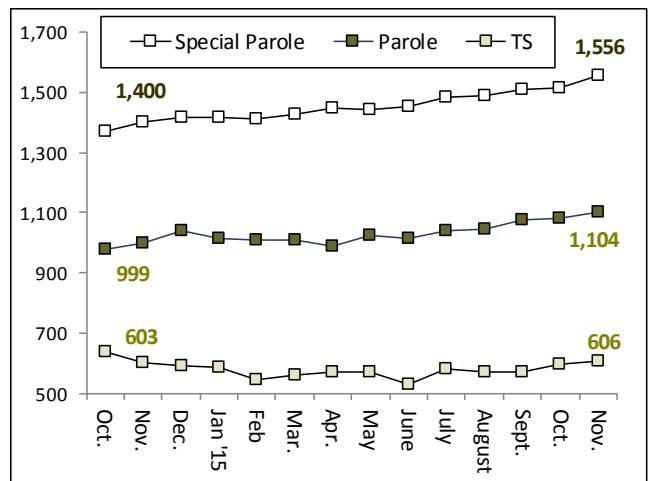


Chart 8 – DOC community supervision

October 1, 2014 through November 1, 2015



Note: Data for all charts, with the exception of Chart 5, was supplied by CT DOC. Data for Chart 5 is based on new case starts in the state Offender-Based Tracking System (OBTS). Chart 8 includes offenders in halfway houses.