

# Developing a Multisector Plan for Aging and Disability

**LONG-TERM CARE COMMITTEE**

**MARCH 12, 2024**



# Broad Goals

Provide framework to plan for 10 years

Connect planning efforts across state agencies with aging and disability lens

Transform infrastructure

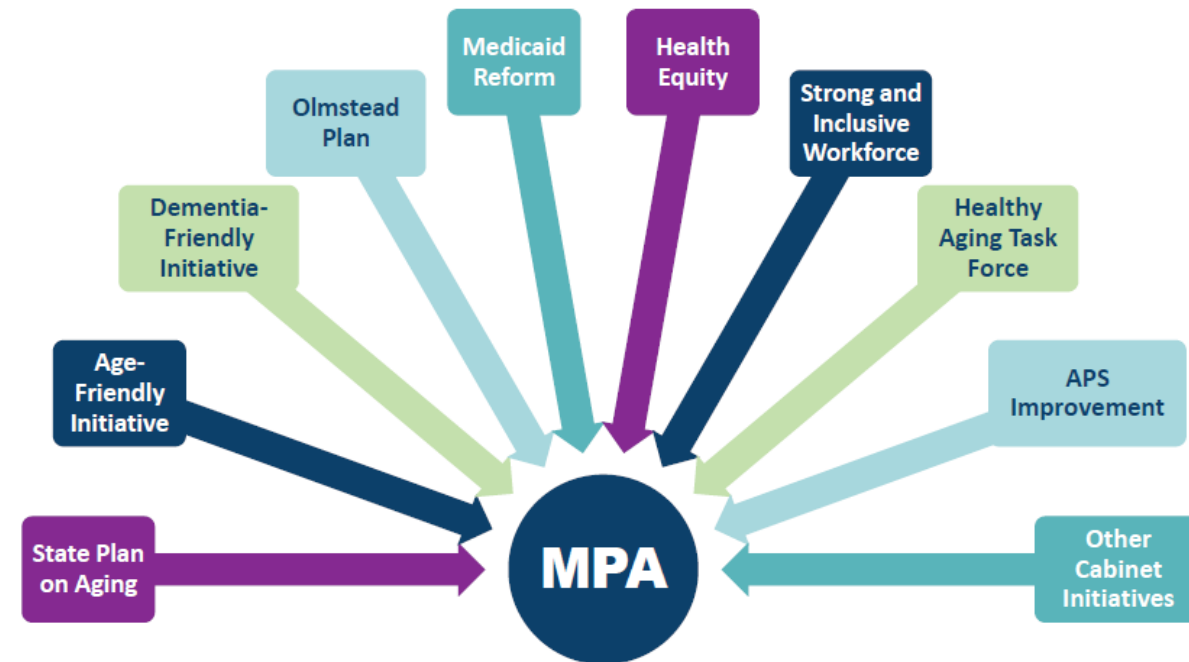
Improve service coordination

Build community authority and value lived experience

Ensure ongoing accountability and evaluation

Strengths rather than replaces!

- Elevates common goals
- Reduces duplication
- Streamlines efforts



*Sample graphic from North Carolina MPA*

# Example: California

*California's Master Plan*  
**FOR AGING**  
**2023-24 INITIATIVES**

*Delivering Results for  
Older Adults, People with  
Disabilities, and Caregivers*



## 5 Bold Goals for 2030

- Housing for all Ages and Stages
- Health Reimagined
- Inclusion and Equity, Not Isolation
- Caregiving that Works
- Affording Aging

# Integrating Across Sectors and Levels of Government

# Multi-State Learning Collaborative

## Center for Health Care Strategies.

Facilitating the second cohort of 10 states and connected to federal advocacy efforts on multisector planning.

## State Government.

Executive and legislative branch representation across disciplines.

## Connecticut Age Well Collaborative.

Connected lived experience and local government with state policymaking.

- Department of Aging and Disability Services
- Department of Social Services
- Office of Policy and Management
- Intergovernmental Planning and Policy Division
- Connecticut Council on Developmental Disabilities
- Commission on Women, Children, Seniors, Equity and Opportunity





# Connecticut **Age Well** Collaborative™

A statewide, cross-sector initiative that fosters aging, dementia and disability-inclusive communities, leading the state's statutory livable communities initiative (CGS Sec. 17b-420a).



Embrace every age, every ability.



Build community authority and value lived experience.



Provide education, resources and support.



Celebrate and scale community action.



Lead multi-sector planning and policy efforts.

# GET INVOLVED WITH EVERY AGE, EVERY ABILITY



Join the movement  
on social media



Download the  
conversation guide



Bring a Daring Dialogue  
to your community



Learn to lead your own  
Daring Dialogues



Display the  
campaign posters



Design posters to  
celebrate your community



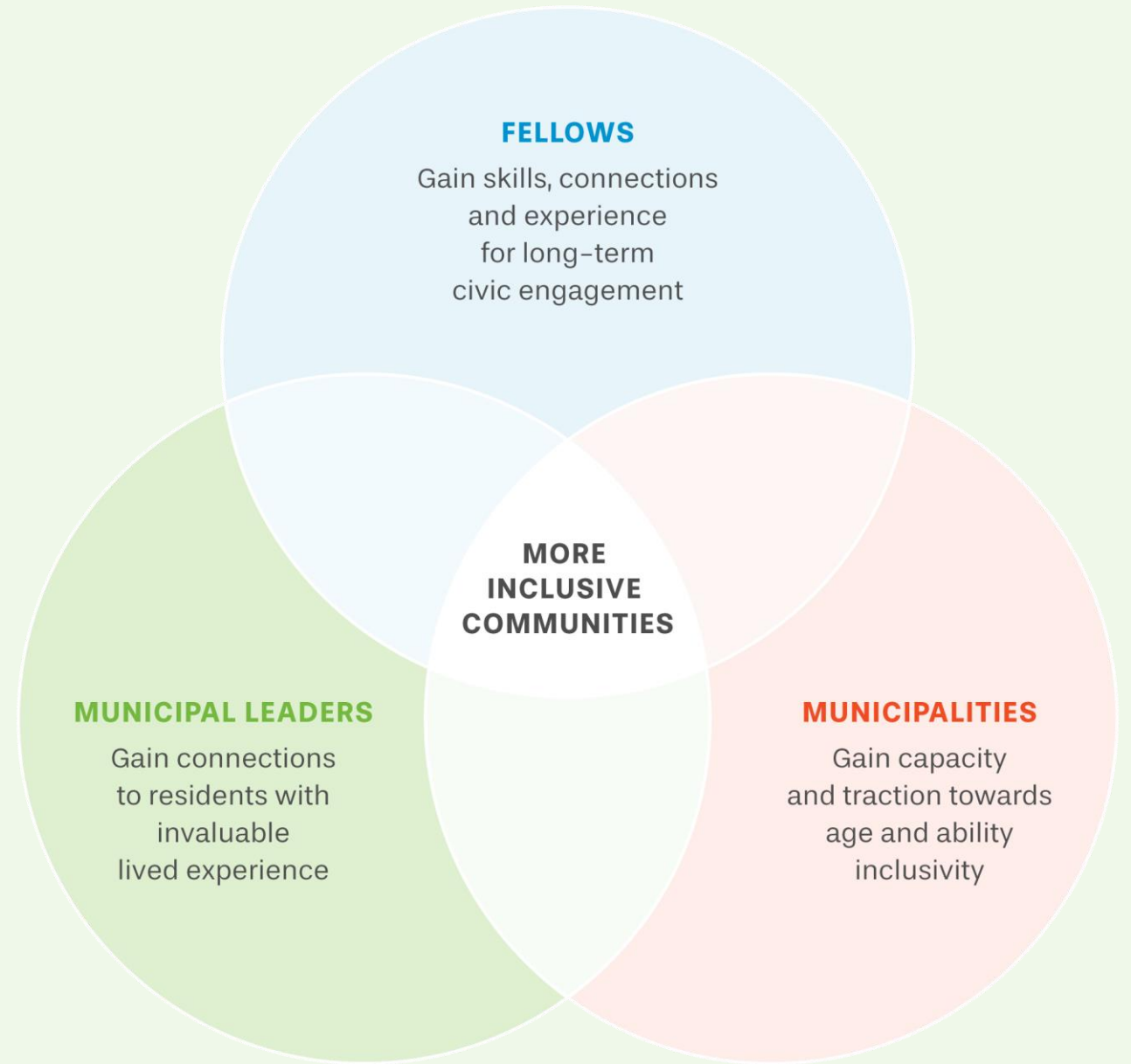
Exhibit the  
campaign art piece



Get recognized  
for your efforts!



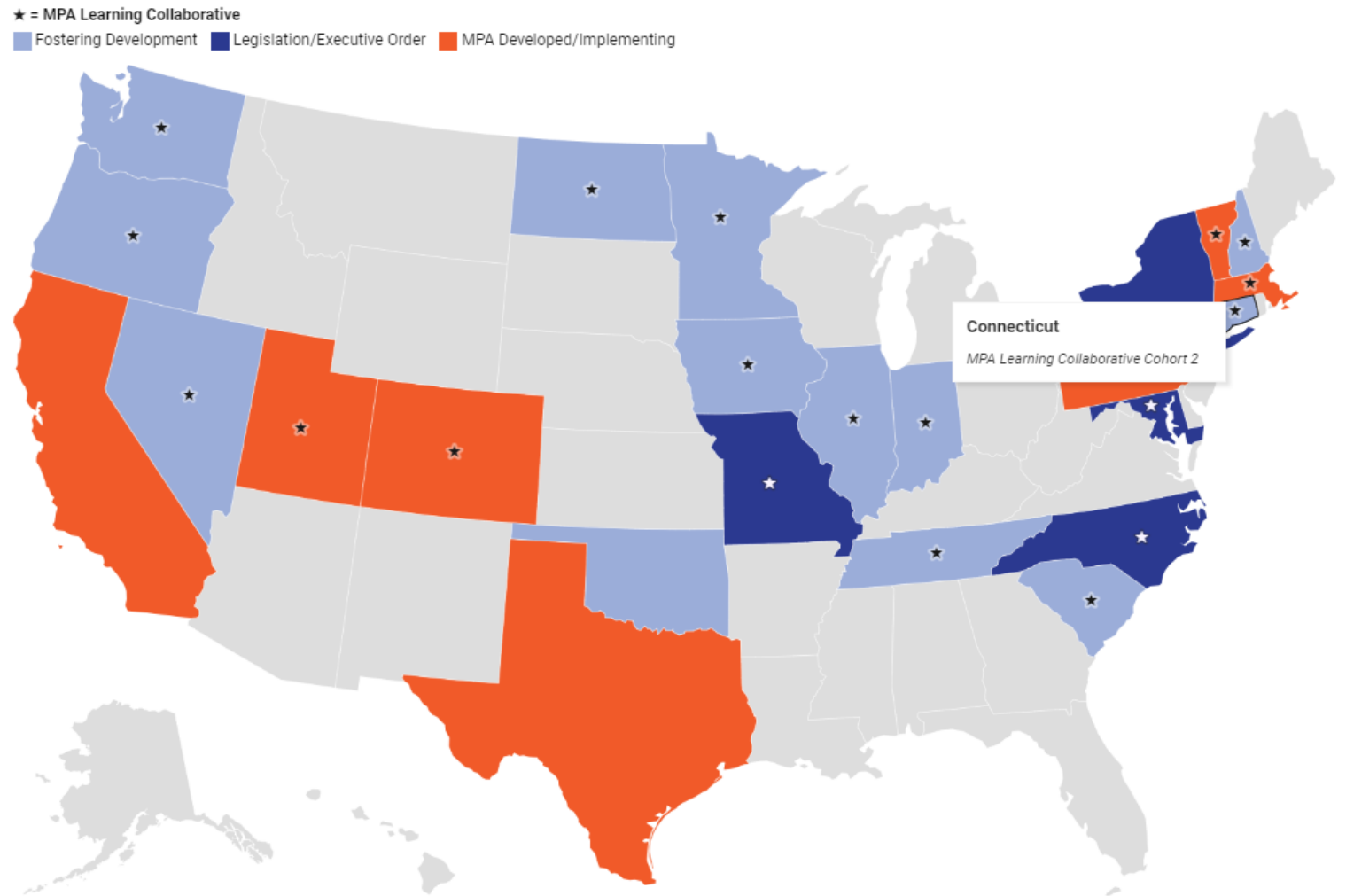
# Community Leaders Fellowship



# Multisector Plans on Aging and Disability

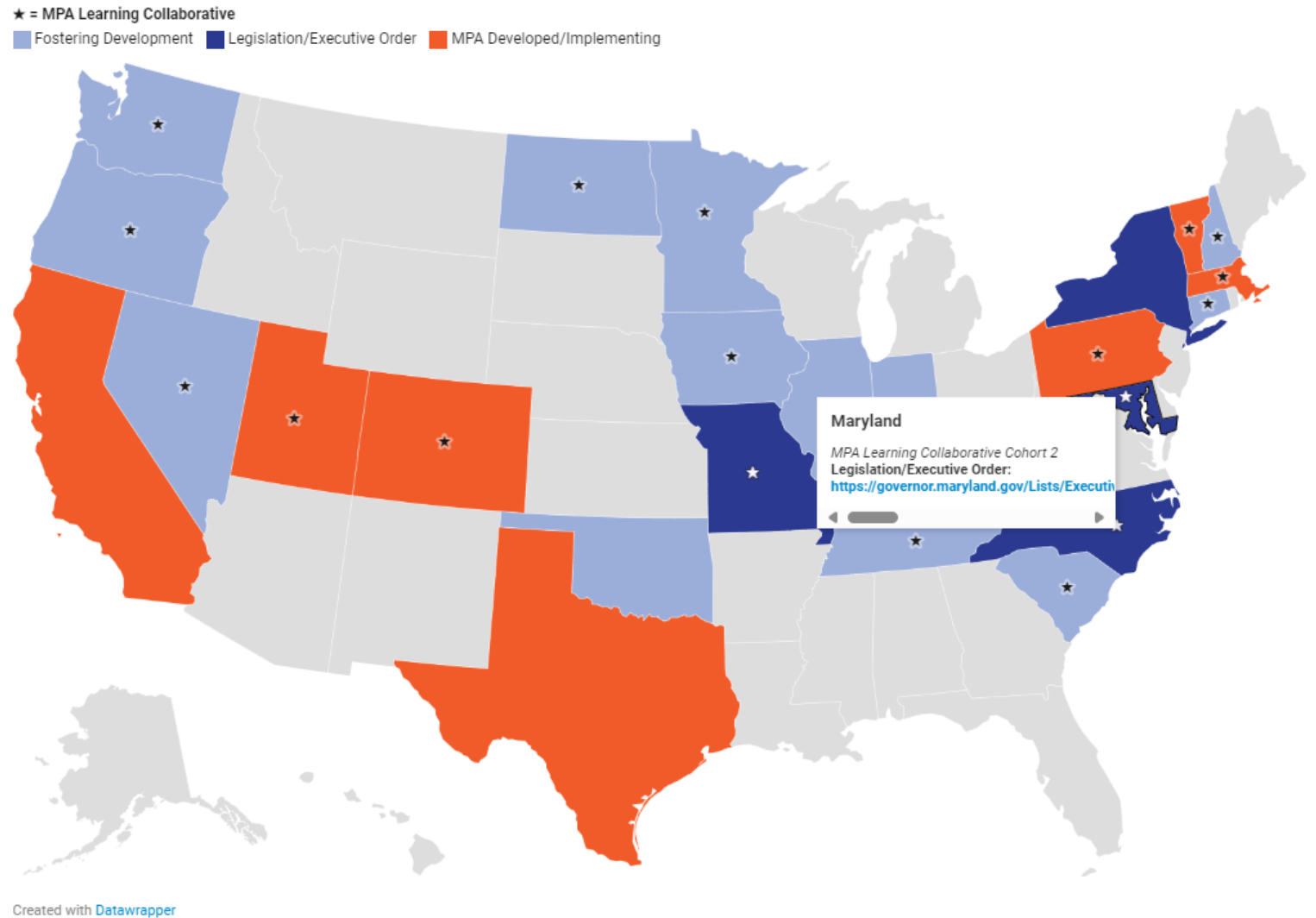


# Multi-Sector Plan Activity Across States



Created with [Datawrapper](#)

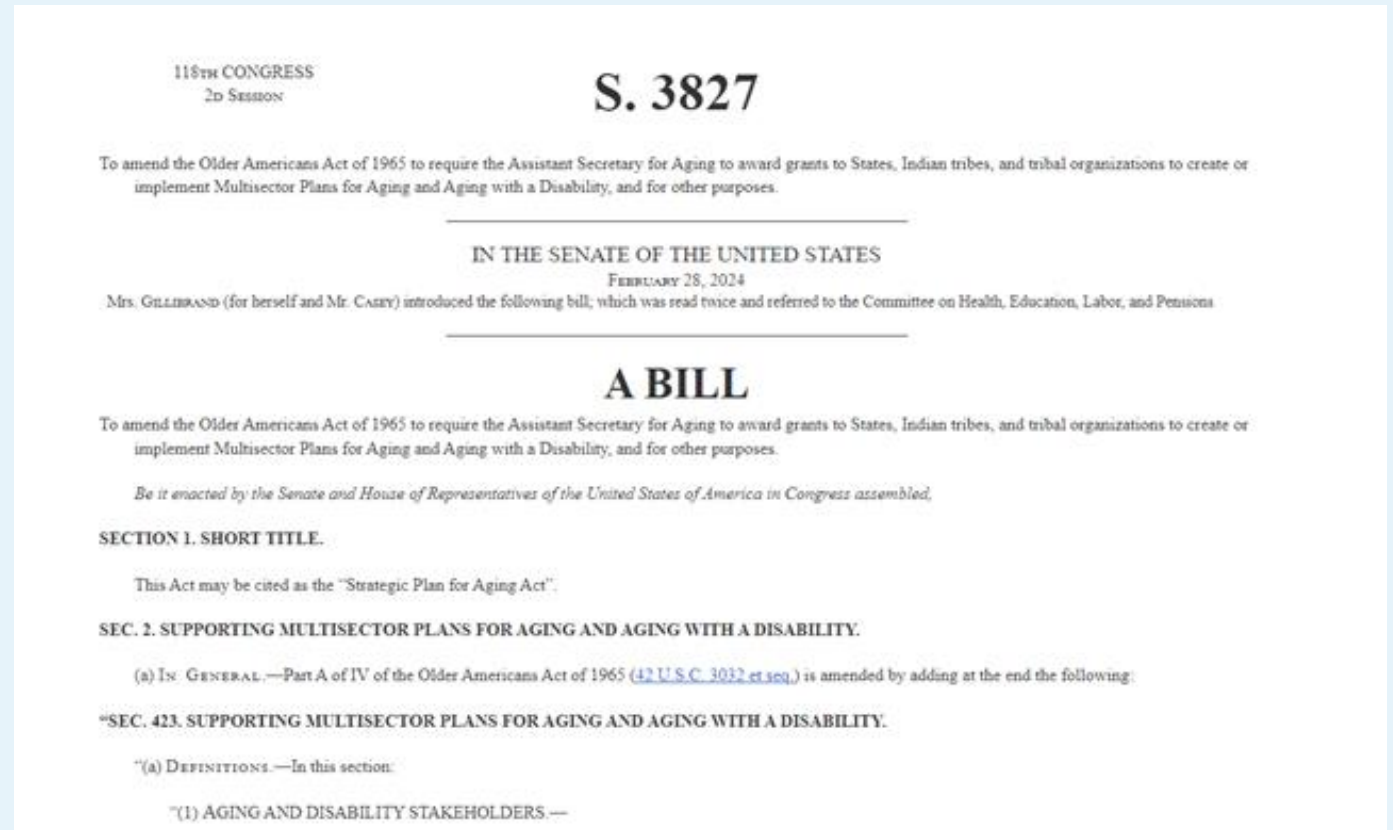
# Multi-Sector Plan Activity Across States





# Strategic Plan for Aging Act

Introduced as part of the  
reauthorization of the  
Older Americans Act



# States' Investments



# State Legislatures are Investing

## California

- \$4.5 million over three years (2022-2025) to enable communities to plan and develop their own local and age- and disability-friendly plans

## Washington

- \$500,000+ over two years to develop a campaign to disrupt ageism and ableism as a workforce development strategy

- Helps make rebalancing successful
- Cross-connects existing assets and investments

Questions?

# Appendix Slides



## CAMPAIGN

*Funding in support of the Collaborative's campaign to challenge negative bias about aging and disability is provided primarily by the Connecticut Council of Developmental Disabilities, with additional, generous support from Connecticut Community Care, the Connecticut Department of Aging and Disability Services and the Point32 Health Foundation.*



# Community Leaders Fellowship: Process Flow



# The Need for Investment

From 10 Things About Long-Term Services and Supports (LTSS) | KFF: <https://www.kff.org/medicaid/issue-brief/10-things-about-long-term-services-and-supports-ltss/>

Most Medicaid LTSS spending is for people who are ages 65 and over or who are under age 65 with disabilities

Enrollees ages 65 and older or under age 65 with disabilities have higher overall Medicaid costs.

Workforce shortages among LTSS providers have been exacerbated by the COVID-19 pandemic.

The need for LTSS will grow as the population ages.