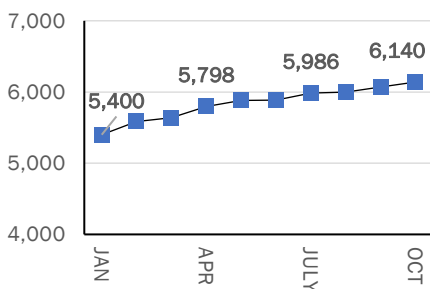




OPM - Criminal Justice Policy & Planning Division Monthly Indicators Report

Highlights

- On October 1, 2022, DOC facilities held 10,094 individuals, down 0.3% (31 people) from one month prior. This small decrease marks only the second instance in 2022 where the month-over-month population has not risen.
- Both arrests and arraignments slowed in September. September's 2,381 arraignments were 15% lower (-436) compared to August (See Chart 2).
- 1,000 pretrial admissions to the DOC occurred in September, down 18% from August's count (1,220 admissions), the year-to-date peak. Pretrial admissions are 10.4% higher, however, compared to September 2021.
- The sentenced population grew 1.1% from the prior month, rising to 6,140 people. Among key DOC population types, only the sentenced population registered an increase in size from the prior month, and, year to date, has grown by 13.7% (see below).
- DOC Sentenced Population: 2022



Correction Population Forecast

DOC facilities averaged a population of 10,093 people over the first week of October, a less-than-one-percent reduction from September. The fall plateauing of the facility population began one month earlier than it tends to occur under historical patterns. OPM CJPPD's forecast anticipated the count would reach 9,864 people in October before holding relatively steady into November (See Table 1). Based on seasonal fluctuations occurring in prior years, DOC facility population is nearing its seasonal peak, after which the population is expected to slowly ebb as 2022 draws to a close.

October's average daily count diverged from OPM CJPPD's forecasted estimate by 2.3%, a slimmer difference compared September's (3.1%). Although the forecast estimated a November 1 population peak for 2022, the actual peak may have occurred earlier, potentially on September 15, at 10,145 people. Pretrial admissions slowed over September as well, falling by 18% compared to the prior month, adding further reinforcing data.

In the final quarter of 2022, OPM CJPPD will monitor the extent of system contraction. Pre-pandemic, DOC populations shrank by 1% on average over the final quarter of the year. The extent to which this seasonal trend bears out this year will be analyzed in the remaining months of the year.

TABLE 1 – Correction Population Forecast

	Avg. Daily Count	OPM 2022 Forecast	Inmate difference
JAN '22	9,456	-	-
FEB	9,734	9,734	-
MAR	9,818	9,800	18
APR	9,838	9,759	79
MAY	9,905	9,709	196
JUN	9,923	9,708	215
JUL	9,981	9,737	244
AUG	10,048	9,777	271
SEP	10,122	9,822	300
OCT	10,093	9,864	229
NOV		9,865	
DEC		9,796	
JAN '23		9,656	
FEB		9,820	

Avg. Daily Count (ADC) for 1st week of month

Chart 1 – Actual Correction Population Against the OPM Forecasts

January 1, 2021 through February 1, 2023

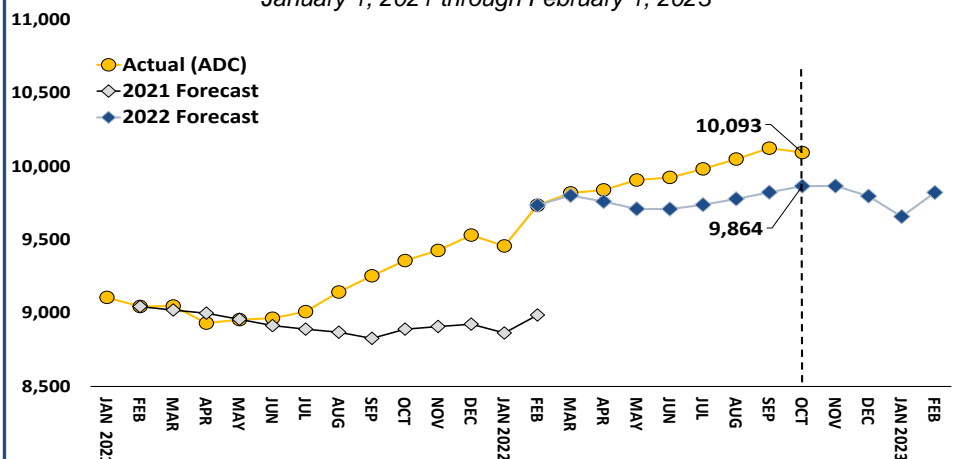


Chart 2 - Criminal Justice, Monthly Counts and Flows

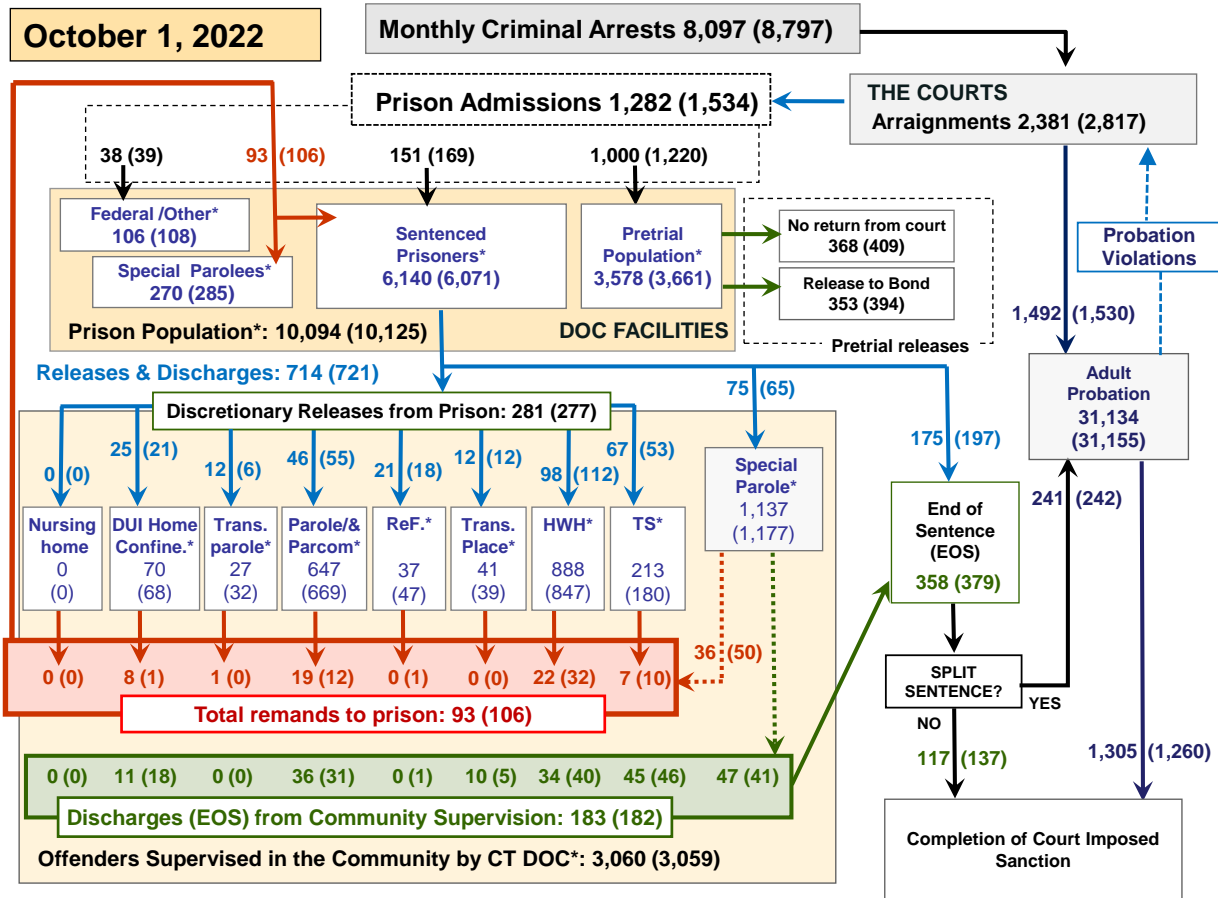
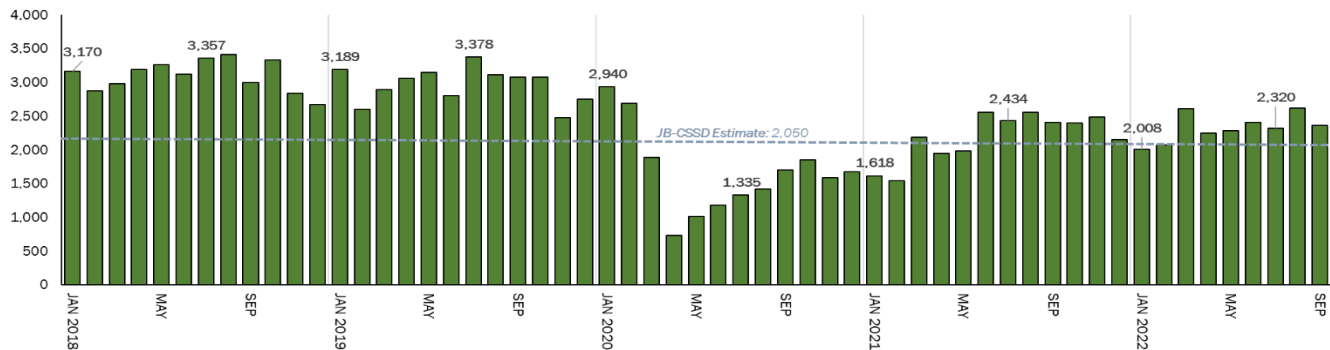


Chart 2 contains monthly operations data for September 2022 and daily counts reported on October 1, 2022. Asterisks (*) indicate the daily count on October 1st. Figures for last month are enclosed by parentheses. Sources: Arrests - CRMVS, via CJIS, Court and probation data - CSSD, all other data - CT DOC.

Spotlight: Pretrial Bail Case Starts, 2018–2022



The Judicial Branch Court Support Services Division (JB-CSSD) has provided the *Monthly* with updated pretrial bail caseload information (see Table 6A). Previously, two metrics, *pretrial bail case starts* (i.e. new pretrial services cases created stemming from interviews for bail determination, court-ordered supervision of pretrial release, or diversionary program application processes), and *pretrial bail case counts*, were provided as estimates.

This month's *Spotlight* chart above provides an historic look at monthly pretrial bail case starts from January 2018 through the most recent month, September 2022. The chart presents the monthly case starts (green bars) against the previous monthly estimate (grey dashed line).

As with many system metrics during this period, volumes dropped sharply with the pandemic's onset before rebounding, but currently remain below pre-pandemic levels. From January 2018 to February 2020, bail case starts averaged just over 3,000 monthly. With the pandemic's onset in March 2020, bail case starts fell considerably before rallying in spring of 2021. From March 2021 onward, bail case starts have averaged around 2,300 monthly. September 2022 case starts are nearly -25% the pre-pandemic count, and OPM CJPPD will be watching to see whether bail case starts hold relatively steady in the months ahead, or continue to move closer to pre-pandemic volumes.

Table 2 - First-of-Month Totals

	2022		2022		2021		% Change	
	Aug. 1	Sep. 1	Oct. 1	Oct. 1	Monthly	Annual		
DOC Facilities								
Federal/Other	112	108	106	106	-1.9%	0.0%		
Sentenced	6,000	6,071	6,140	5,416	1.1%	13.4%		
Special Parole	297	285	270	368	-5.3%	-26.6%		
Pretrial	3,597	3,661	3,578	3,465	-2.3%	3.3%		
Total	10,006	10,125	10,094	9,355	-0.3%	7.9%		
DOC Community								
Transfer Parole	37	32	27	57	-15.6%	-52.6%		
Parole/ Parcom Total	665	669	647	878	-3.3%	-26.3%		
Parole	520	521	498	707	-4.4%	-29.6%		
Parcom @ CT	145	148	149	171	0.7%	-12.9%		
Furlough	42	47	37	14	-21.3%	164.3%		
Trans Placement	34	39	41	60	5.1%	-31.7%		
DUI/Home confine.	69	68	70	45	2.9%	55.6%		
Halfway House Total	828	847	888	743	4.8%	19.5%		
Comm Release	368	382	402	362	5.2%	11.0%		
TS	10	10	11	6	10.0%	83.3%		
Parole	159	164	161	136	-1.8%	18.4%		
Transfer Parole	18	16	13	10	-18.8%	30.0%		
Special Parole	273	275	301	229	9.5%	31.4%		
TS	174	180	213	124	18.3%	71.8%		
Nursing home	1	0	0	0	-	-		
Special Parole	1,196	1,177	1,137	1,426	-3.4%	-20.3%		
Total	3,046	3,059	3,060	3,347	0.0%	-8.6%		

Table 2a - Monthly Admissions, Releases, & Discharges

	2022		2022		2021		% Change	
	JULY	AUG	SEP	SEP	Monthly	Annual		
Admissions								
Federal/Other	28	39	38	44	-2.6%	-13.6%		
Remands	130	106	93	102	-12.3%	-8.8%		
DUI	7	1	8	2	700.0%	300.0%		
Transfer Parole	5	0	1	0	-	-		
Parole	17	12	19	13	58.3%	46.2%		
Trans Plac/Furlough	2	1	0	1	-100.0%	-100.0%		
HWH	28	32	22	24	-31.3%	-8.3%		
TS	7	10	7	5	-30.0%	40.0%		
Special Parole	64	50	36	57	-28.0%	-36.8%		
New Sentence	151	169	151	128	-10.7%	18.0%		
VOP	23	29	30	39	3.4%	-23.1%		
Pretrial	967	1,220	1,000	906	-18.0%	10.4%		
Total	1,276	1,534	1,282	1,180	-16.4%	8.6%		
Releases and discharges								
Transfer Parole	12	6	12	18	100.0%	-33.3%		
Parole	35	55	46	55	-16.4%	-16.4%		
Furlough	26	18	21	13	16.7%	61.5%		
Trans. Placement	12	12	12	19	0.0%	-36.8%		
Home Confinement DUI	19	21	25	12	19.0%	108.3%		
HWH	94	112	98	62	-12.5%	58.1%		
TS	50	53	67	38	26.4%	76.3%		
Special Parole	67	65	75	79	15.4%	-5.1%		
Nursing home	0	0	0	0	-	-		
End of Sentence	416	379	358	299	-5.5%	19.7%		
Total	731	721	714	595	-1.0%	20.0%		
Pretrial Releases*								
From Court	324	409	368	243	-10.0%	51.4%		
Release to Bond	340	394	353	342	-10.4%	3.2%		

* Totals reflect events, not individual offenders

DOC - Community Release Unit (CRU)

Table 3 - Case reviews and release metrics

	Cases reviewed	Approved	Denied	Continued	Approval rate
JULY	410	205	51	96	50%
AUG	418	201	39	109	48%
SEP '22	429	209	43	99	49%
SEP '21	302	137	35	47	45%

Note: Figures published here are based on the operational data available at the time of publication. Data in subsequent issues may not agree.

Board of Pardons and Paroles

Table 4 - Parole hearings, new cases

	Parole hearings	Paroles granted	Grant rate	Granted: prior year	Granted: two years prior
JULY	55	33	60%	64	79
AUG	73	50	68%	57	68
SEP	42	27	64%	52	102

Table 4a - Other BOPP actions

	Repare from revocation	Early Termination		Special parole discharges	Transfer parole approvals
		Discretionary parole	Special parole		
JULY	53	10	18	12	7
AUG	37	6	24	10	15
SEP	33	15	17	11	8

The Pretrial Population

Table 5 - Bond ranges for pretrial detainees

Bond amount	Aug. 1, 2022	Sep. 1, 2022	Oct. 1, 2022	Oct. 1, 2021
Less than \$20K	428	418	390	379
\$20K to < \$50K	429	459	455	450
\$50K to < \$100K	537	536	502	588
\$100K or higher	2,406	2,414	2,341	2,271
Persons w/bonds	3,800	3,827	3,688	3,688
Over \$1M	461	480	471	391

Table 5a - Pretrial, weeks since admission

Weeks since last DOC admit	Aug. 1, 2022	Sep. 1, 2022	Oct. 1, 2022	Oct. 1, 2021
< 1 week	371	333	293	290
1 to < 3 weeks	279	271	271	263
3 to < 10 weeks	718	757	723	644
10 to < 30 weeks	988	1,039	1,010	1,004
30 wks or more	1,449	1,440	1,400	1,490
Pretrial prisoners	3,805	3,840	3,697	3,691

Table 5b - Pretrial admits, new offenders

	JULY 2022	AUG 2022	SEP 2022	SEP 2021
Arraignments	2,198	2,817	2,381	2,115
Pretrial Admits	967	1,220	1,000	906
New to DOC	231	305	206	234
% New	24%	25%	21%	26%

Court Support Services Division

Table 6 - The jail reinterview program

	Pretrial admissions	Offender interviews	Offenders released	Released last year
JULY	967	807	258	213
AUG	1,220	987	290	180
SEP	1,000	980	269	245

Table 6a - Pretrial bail and probation caseloads

	Pretrial bail case starts	Client supv. starts	Split sentence starts	Pretrial bail cases*
JULY	2,320	1,405	292	14,111
AUG	2,620	1,530	242	14,165
SEP '22	2,361	1,492	241	14,042
SEP '21	2,407	1,554	219	12,794

* reflects open cases as of the first of the month

Chart 3 – Prison Population

First week of the month, avg. daily count (ADC)

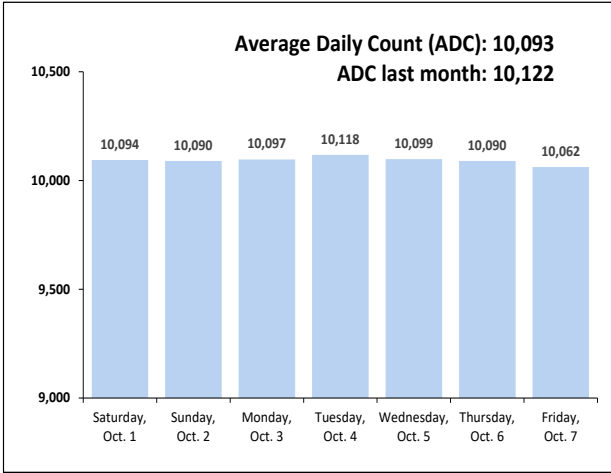


Chart 6 – Monthly DOC Admissions

September 2021 through September 2022

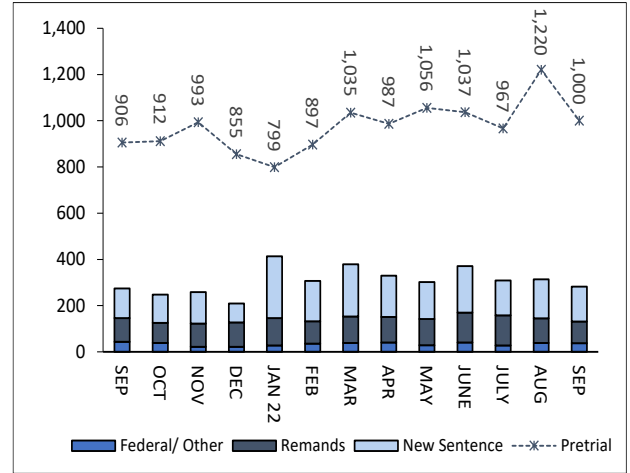


Chart 4 – Prison Population, First-of-Month

2019, 2020, 2021, and 2022

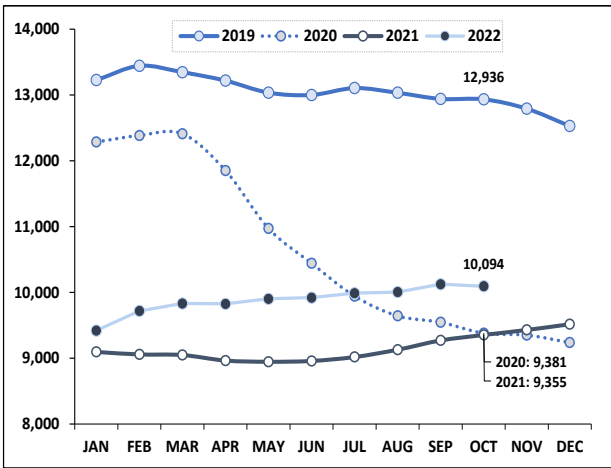


Chart 7– Remands from Community Release

September 2022

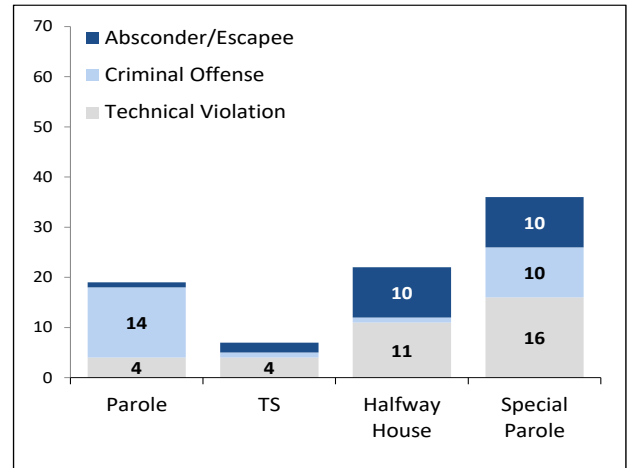


Chart 5 – Statewide Arrests

2021 and 2022

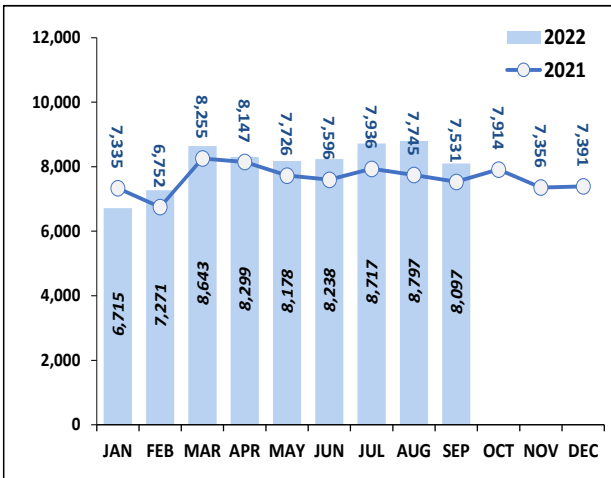
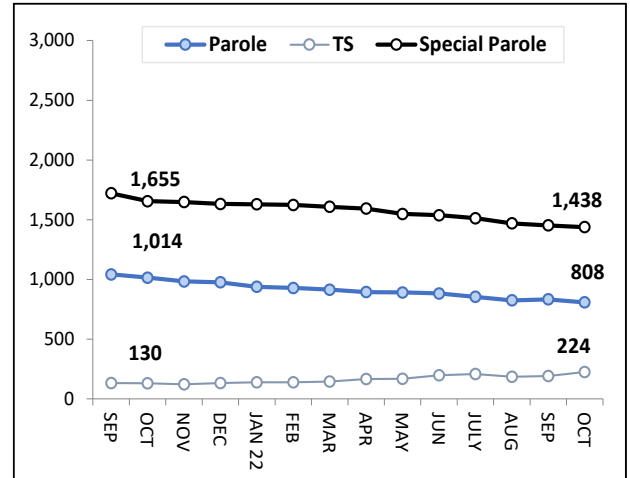


Chart 8 – DOC Community Supervision

September 1, 2021 through October 1, 2022



Note: Data for all charts, except for Chart 5, was supplied by CT DOC. Data for Chart 5 are for new case starts in the state Criminal Motor Vehicle System (CRMVS). Chart 8 includes offenders in halfway houses.