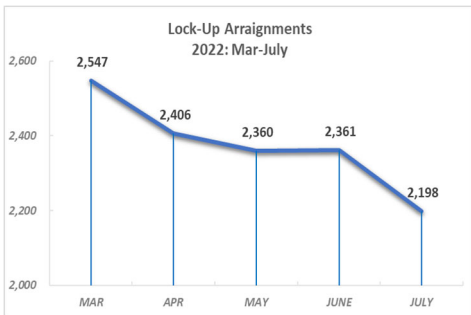




OPM - Criminal Justice Policy & Planning Division Monthly Indicators Report

Highlights

- Connecticut’s prisons and jails held 10,006 people on August 1, 2022, an increase of only 16 from the prior month. The correctional population has risen 9.6% compared to one year ago but remains below pre-pandemic levels (see “Correction Population Forecast” section).
- Arrests increased nearly 6% over the past month, while both lock-up arraignments and DOC pretrial admissions fell between June and July. Arraignments and pretrial admissions in July declined at similar rates, each falling by 6.9% and 6.8% respectively. Since March 2022, lock-up arraignments have generally been decreasing (see chart below).



- The community Special Parole population continues to shrink, with the August 1 count 2.6% smaller than July’s (see Table 2). When including Special Parolees housed in halfway houses, the total Special Parole population in the community has fallen by 16.3% to 1,469 from 1,755 one year ago (See *Spotlight* and Chart 8).
- In July 2022, the DOC’s Community Release Unit (CRU) reviewed 410 cases, compared with 285 cases in July 2021, a 43.9% rise from the year before. CRU’s approval rate now stands at 50% of case reviewed, compared to 44% one year ago (see Table 3).

Correction Population Forecast

Over the first week of August, Connecticut’s jail and prison averaged a 10,048-person count, exceeding 10,000 people for the first time since June 2020. OPM’s correction population forecast estimated 271 fewer individuals – a 2.7% difference – at the start of August compared to the average daily first-week count (see Table 1). August’s average daily count’s percent divergence from OPM’s forecast is 0.2 percentage points higher than July’s.

Although at a two-year high, the correction population is considerably lower than pre-pandemic levels, as noted in previous *Monthly Indicators*. Connecticut’s August correction population is 81% of the 12,411-person count on March 2020, a month considered by many to mark the onset of the pandemic. Moreover, prior to recent increases, the correction population fell to a 8,948-person low on May 2021. Taken together, the correction population growth this year is part of a continued return to long-term correction population trends taking place before disruptions caused by the pandemic’s onset.

TABLE 1 – Correction Population Forecast

	Avg. Daily OPM 2022 Count	Forecast	Inmate difference
JAN '22	9,456	-	-
FEB	9,734	9,734	-
MAR	9,818	9,800	18
APR	9,838	9,759	79
MAY	9,905	9,709	196
JUN	9,923	9,708	215
JUL	9,981	9,737	244
AUG	10,048	9,777	271
SEP		9,822	
OCT		9,864	
NOV		9,865	
DEC		9,796	
JAN '23		9,656	
FEB		9,820	

Avg. Daily Count (ADC) for 1st week of month

In the absence of the COVID-19 pandemic, OPM projects using historic trends that DOC facilities would have held approximately 11,000 people by August 2022, and approximately 10,500 as of January 2023. Alternately, if the linear growth observed from May 2021 to the present persists through fall, we anticipate the correctional population will similarly reach 10,500 by early 2023.

Chart 1 – Actual Correction Population Against the OPM Forecasts

January 1, 2021 through February 1, 2023

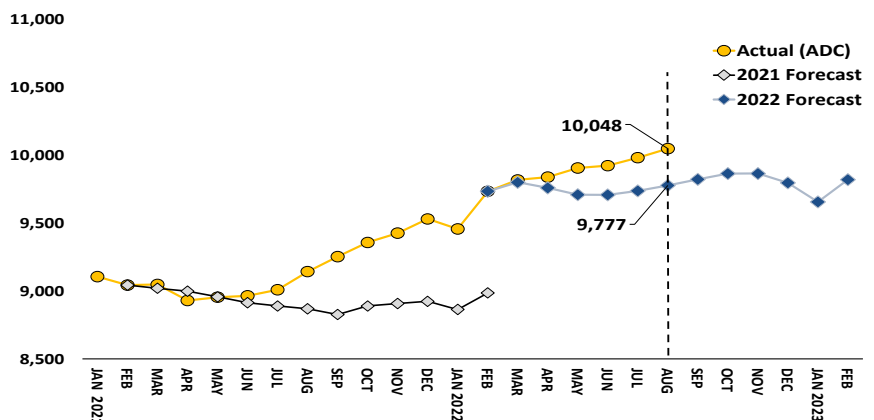


Chart 2 - Criminal Justice, Monthly Counts and Flows

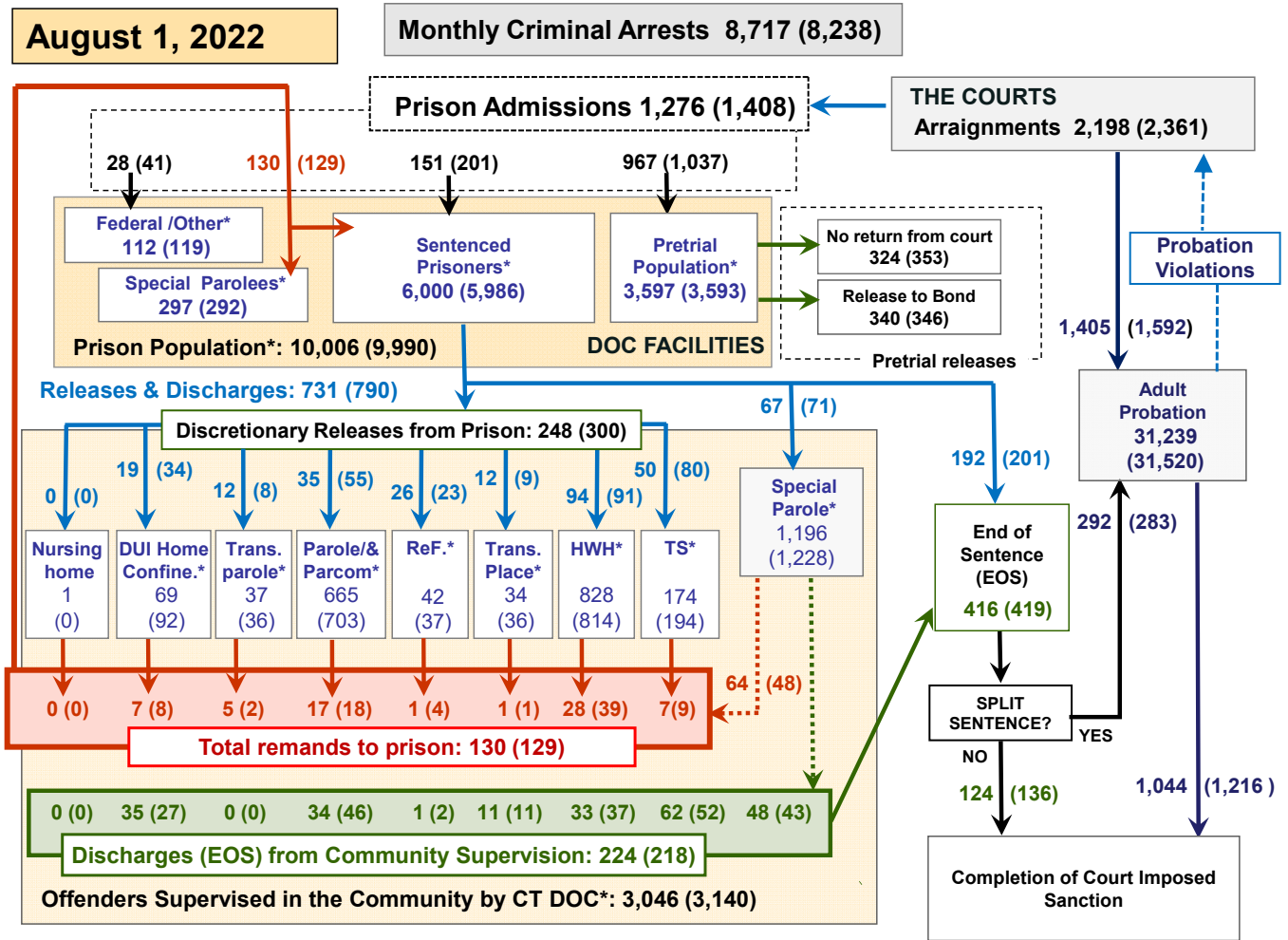
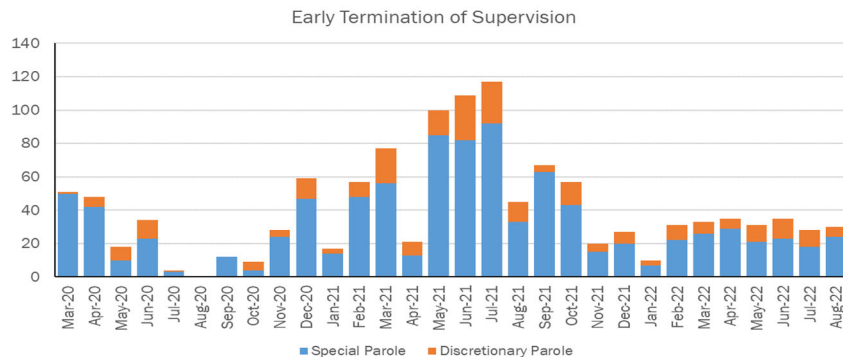


Chart 2 contains monthly operations data for July 2022 and daily counts reported on August 1, 2022. Asterisks (*) indicate the daily count on August 1st. Figures for last month are enclosed by parentheses. Sources: Arrests – CRMVS, via CJIS, Court and probation data - CSSD, all other data - CT DOC.

Spotlight: Early Termination of Supervision Reviews



This month, we noted the overall reduction in Connecticut's special parole population from one year ago (see Highlights on p.1). A key factor in this reduction has been the contribution of early discharges from special parole, a metric not reflected among our monthly indicators. The Board of Pardons and Paroles commenced *Early Termination of Supervision Reviews* in accordance with Public Acts 18-63 and 19-8 and revised BOPP policy effective January 1st, 2020. The chart above shows the Board's review activity since March 2020 in granting early

termination of special parole (blue) and discretionary parole (orange). Though activity fluctuates month-to-month, the chart demonstrates the effect over time this activity has on parole populations, with 1,210 total early discharges from special parole and discretionary parole to date.

As a key Board activity that impacts the size and flows of the community supervision population, BOPP and OPM CJPPD are collaborating to update Table 4A to include early termination of supervision activity in future issues.

Table 2 - First-of-Month Totals

	2022	2022	2022	2021	% Change	
	June 1	July 1	Aug. 1	Aug. 1	Monthly	Annual
DOC Facilities						
Federal/Other	104	119	112	103	-5.9%	8.7%
Sentenced	5,887	5,986	6,000	5,348	0.2%	12.2%
Special Parole	294	292	297	362	1.7%	-18.0%
Pretrial	3,636	3,593	3,597	3,318	0.1%	8.4%
Total	9,921	9,990	10,006	9,131	0.2%	9.6%
DOC Community						
Transfer Parole	39	36	37	49	2.8%	-24.5%
Parole/ Parcom Total	733	703	665	934	-5.4%	-28.8%
Parole	585	556	520	756	-6.5%	-31.2%
Parcom @ CT	148	147	145	178	-1.4%	-18.5%
Furlough	34	37	42	21	13.5%	100.0%
Trans Placement	39	36	34	68	-5.6%	-50.0%
DUI/Home confine.	96	92	69	37	-25.0%	86.5%
Halfway House Total	852	814	828	793	1.7%	4.4%
Comm Release	360	346	368	407	6.4%	-9.6%
TS	11	14	10	5	-28.6%	100.0%
Parole	149	151	159	135	5.3%	17.8%
Transfer Parole	22	19	18	7	-5.3%	157.1%
Special Parole	310	284	273	239	-3.9%	14.2%
TS	185	194	174	143	-10.3%	21.7%
Nursing home	0	0	1	0	-	-
Special Parole	1,227	1,228	1,196	1,516	-2.6%	-21.1%
Total	3,205	3,140	3,046	3,565	-3.0%	-14.6%

Table 2a - Monthly Admissions, Releases, & Discharges

	2022	2022	2022	2021	% Change	
	MAY	JUNE	JULY	JULY	Monthly	Annual
Admissions						
Federal/Other	29	41	28	28	-31.7%	0.0%
Remands	113	129	130	91	0.8%	42.9%
DUI	1	8	7	1	-12.5%	600.0%
Transfer Parole	0	2	5	2	150.0%	150.0%
Parole	20	18	17	21	-5.6%	-19.0%
Trans Plac/Furlough	0	5	2	2	-60.0%	0.0%
HWH	23	39	28	18	-28.2%	55.6%
TS	8	9	7	4	-22.2%	75.0%
Special Parole	61	48	64	43	33.3%	48.8%
New Sentence	160	201	151	113	-24.9%	33.6%
VOP	41	39	23	23	-41.0%	0.0%
Pretrial	1,056	1,037	967	901	-6.8%	7.3%
Total	1,358	1,408	1,276	1,133	-9.4%	12.6%
Releases and discharges						
Transfer Parole	9	8	12	6	50.0%	100.0%
Parole	68	55	35	52	-36.4%	-32.7%
Furlough	24	23	26	13	13.0%	100.0%
Trans. Placement	6	9	12	11	33.3%	9.1%
Home Confinement DUI	53	34	19	11	-44.1%	72.7%
HWH	77	91	94	81	3.3%	16.0%
TS	74	80	50	30	-37.5%	66.7%
Special Parole	72	71	67	76	-5.6%	-11.8%
Nursing home	0	0	0	0	-	-
End of Sentence	362	419	416	319	-0.7%	30.4%
Total	745	790	731	599	-7.5%	22.0%
Pretrial Releases*						
From Court	302	353	324	186	-8.2%	74.2%
Release to Bond	344	346	340	338	-1.7%	0.6%

* Totals reflect events, not individual offenders

DOC - Community Release Unit (CRU)

Table 3 - Case reviews and release metrics

	Cases				Approval Rate
	Reviewed	Approved	Denied	Continued	
MAY	414	205	40	89	50%
JUNE	408	206	36	99	50%
JULY 22	410	205	51	96	50%
JULY 21	285	124	39	37	44%

Note: Figures published here are based on the operational data available at the time of publication. Data in subsequent issues may not agree.

Board of Pardons and Paroles

Table 4 - Parole hearings, new cases

	Parole Hearings	Paroles granted	Grant rate	Granted: Prior Year	Granted: Two Years Prior
MAY	52	33	63%	57	86
JUNE	56	32	57%	59	77
JULY	55	33	60%	64	79

Table 4a - Other BOPP actions

	Reparole from revocation	Reparole from rescission	Closed interest cases	Special parole cases	Transfer parole cases
MAY	38	0	13	7	13
JUNE	35	0	19	9	7
JULY 2022	51	0	16	9	9
JULY 2021	6	1	12	9	25

The Pretrial Population

Table 5 - Bond ranges for pretrial detainees

Bond amount	June 1, 2022	July 1, 2022	Aug. 1, 2022	Aug. 1, 2021
Less than \$20K	424	408	428	364
\$20K to < \$50K	440	437	429	439
\$50K to < \$100K	544	518	537	543
\$100K or higher	2,374	2,383	2,406	2,203
Persons w/bonds	3,782	3,746	3,800	3,549
Over \$1M	439	456	461	373

Table 5a - Pretrial, weeks since admission

Weeks since last DOC admit	June 1, 2022	July 1, 2022	Aug. 1, 2022	Aug. 1, 2021
< 1 week	344	278	371	300
1 to < 3 weeks	266	291	279	236
3 to < 10 weeks	708	735	718	611
10 to < 30 weeks	975	960	988	938
30 wks or more	1,509	1,487	1,449	1,466
Pretrial prisoners	3,802	3,751	3,805	3,551

Table 5b - Pretrial admits, new offenders

	MAY 2022	JUNE 2022	JULY 2022	JULY 2021
Arraignments	2,360	2,361	2,198	2,009
Pretrial Admits	1,056	1,037	967	901
New to DOC	272	254	231	214
% New	26%	24%	24%	24%

Court Support Services Division

Table 6 - The jail reinterview program

	Pretrial admissions	Offender interviews	Offenders released	Released last year
MAY	1,056	870	259	174
JUNE	1,037	950	253	192
JULY	967	807	258	213

Table 6a - Pretrial bail and probation caseloads

	Pretrial Bail Case Starts	Client Supv. Starts	Split Sentence Starts	Pretrial bail cases
MAY	2,050*	1,777	244	12,665*
JUNE	2,050*	1,592	283	12,665*
JULY	2,050*	1,405	292	12,665*
JULY '21	2,050*	1,239	190	12,665*

* CSSD estimates

Chart 3 – Prison Population

First week of the month, avg. daily count (ADC)

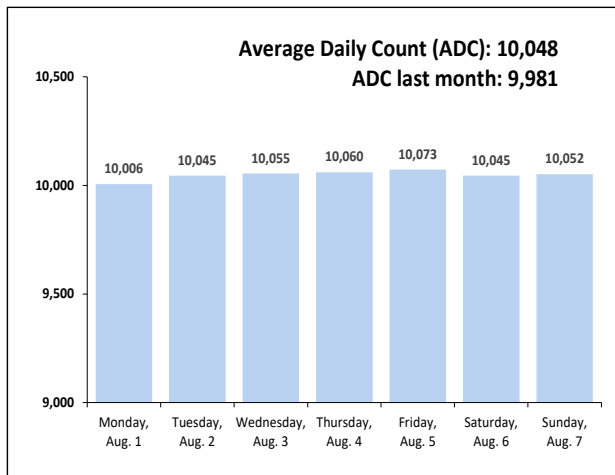


Chart 6 – Monthly DOC Admissions

July 2021 through July 2022

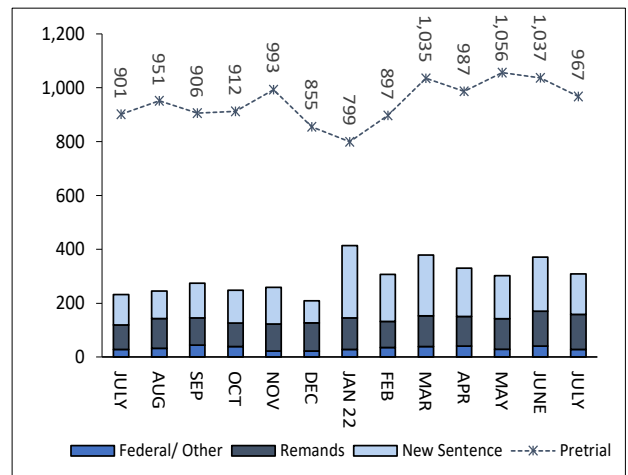


Chart 4 – Prison Population, First-of-Month

2019, 2020, 2021, and 2022

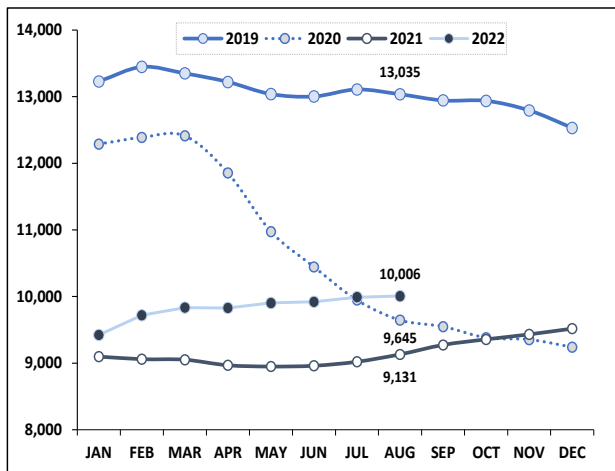


Chart 7– Remands From Community Release

July 2022

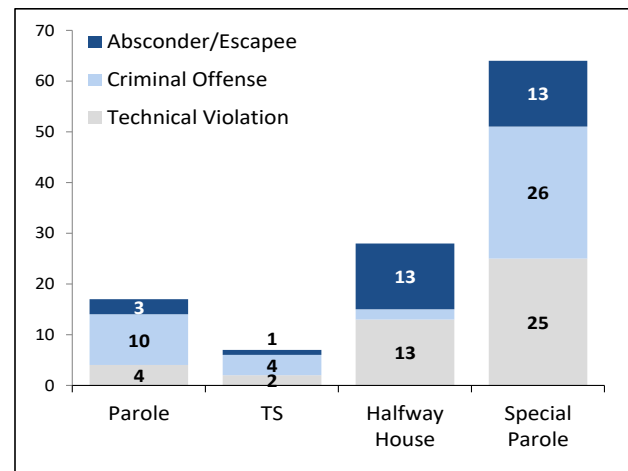


Chart 5 – Statewide Arrests

2021 and 2022

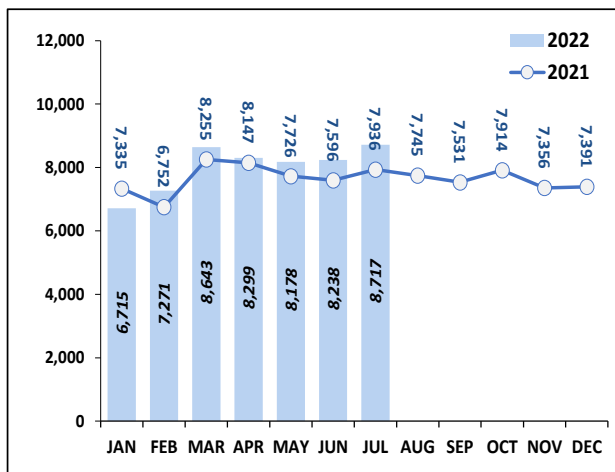
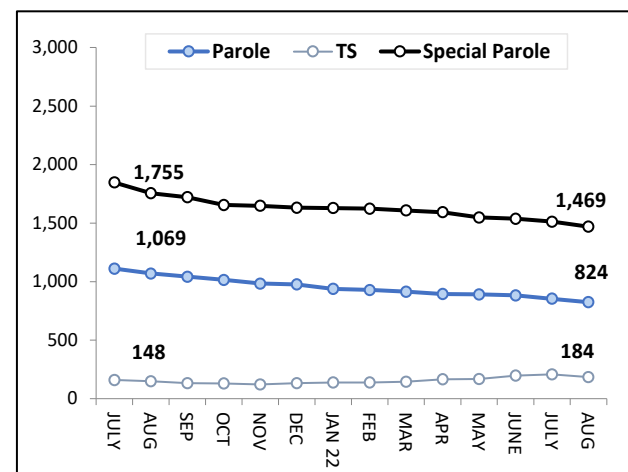


Chart 8 – DOC Community Supervision

July 1, 2021 through Aug. 1, 2022



Note: Data for all charts, except for Chart 5, was supplied by CT DOC. Data for Chart 5 are for new case starts in the state Criminal Motor Vehicle System (CRMVS). Chart 8 includes offenders in halfway houses.