

OPM - Criminal Justice Policy & Planning Division

Monthly Indicators Report

Highlights

- As the summer season approaches, Connecticut's correctional population has remained relatively stable. On June 1, 2021, the confined population stood at 8,960 individuals. While a diminutive departure of only twelve persons compared to May 1, 2021 (8,948), it represents a 14% reduction in the DOC facility population from June 2020 (see table 1 on page 3).
- After a two-year hiatus, the Board of Pardons and Parole will begin to hear commutation petitions starting later in 2021. To be eligible, an individual must presently be incarcerated, have already served a minimum of ten years on an overall sentence of greater than a decade, and cannot qualify for parole within the next two years of their sentence. These parameters will yield a pool of candidates sentenced to lengthy terms of incarceration and therefore likely to have been convicted of serious crimes. Nonetheless, this release or "reduction" mechanism is expected to be utilized sparingly, as it employs a very rigorous approval process.
- Special parole discharges rose from 37 individuals in April, to 110 individuals in May, a two-fold increase (see Chart 2 and Table 2). This growth was attributed in part to a rise in the number of individuals who qualified for early discharge. Staff at Parole and Community Services (PCS) nominate for review candidates eligible and appropriate for early discharge consideration by BOPP. An uptick in nominations by PCS spurred the Board to add hearing dates, resulting in the jump observed between April and May.

Prison Population Forecast

The prison population continues to track closely with the path projected by OPM in February. Although April and May are generally easier to predict than the summer months, indicators suggest that the prison population will not see severe volatility in the near future. With admissions and releases in near equilibrium, conditions make a considerable swell in the near term unlikely. OPM will continue to monitor key indicators, particularly newly sentenced admissions to the DOC. Newly sentenced admissions represent the front end process of adjudication leading to a term of incarceration.

Historically, a typical month would see 200 to 300 such admissions. Since March 2020 the flow of newly sentenced admissions has slowed considerably. When this metric returns to pre-pandemic levels, a cascade effect will ensue: the sentenced population will stop falling and likely increase, the pretrial population will likely decline as some of those individuals will transition to the sentenced pool, while others will discharge with time served. With some time lag, downstream indicators will tick up as the CRU and BOPP will see an increase in cases for review. These are the indicators of flow and process that accompany the counts reflected in the chart below and drive OPM's forecast model.

TABLE 1 – Prison Population Forecast

	Avg. Daily Count	OPM 2021 Forecast	Inmate difference
JAN '21	9,106	-	-
FEB	9,044	9,044	-
MAR	9,048	9,020	-28
APR	8,931	8,999	68
MAY	8,955	8,957	2
JUN	8,965	8,914	-51
JUL		8,890	-
AUG		8,869	-
SEP		8,827	-
OCT		8,890	-
NOV		8,908	-
DEC		8,924	-
JAN '22		8,864	-
FEB		8,986	-

Avg. Daily Count (ADC) for 1st week of month

Chart 1 – Actual prison population against the OPM forecasts

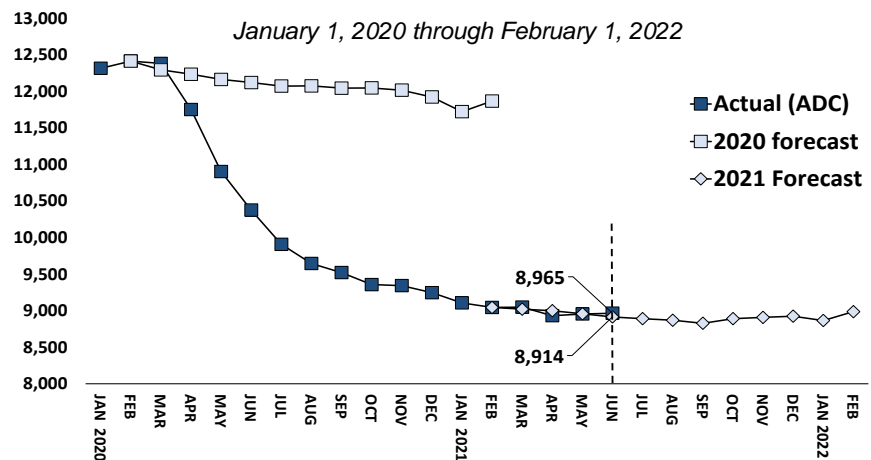


Chart 2 - Criminal justice, monthly counts and flows

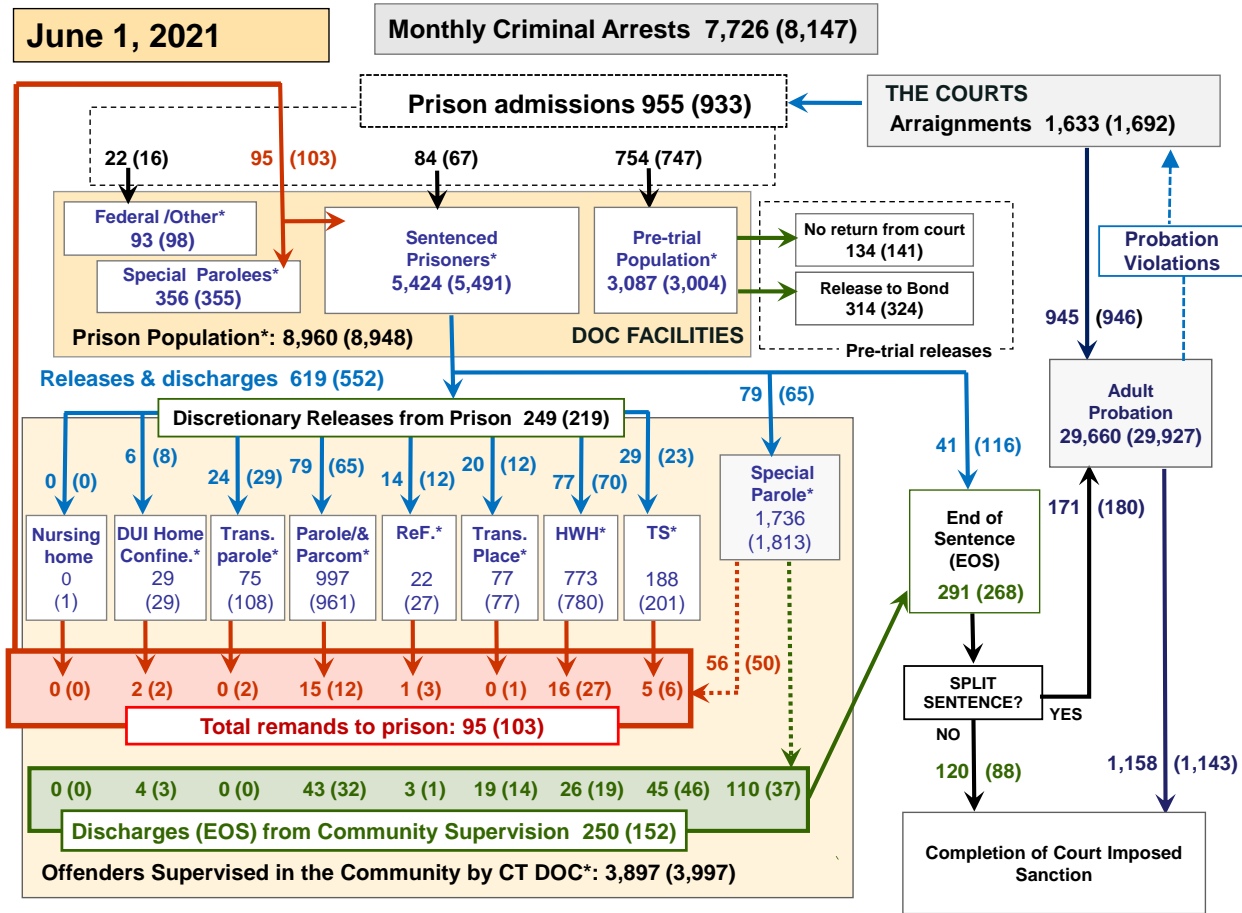
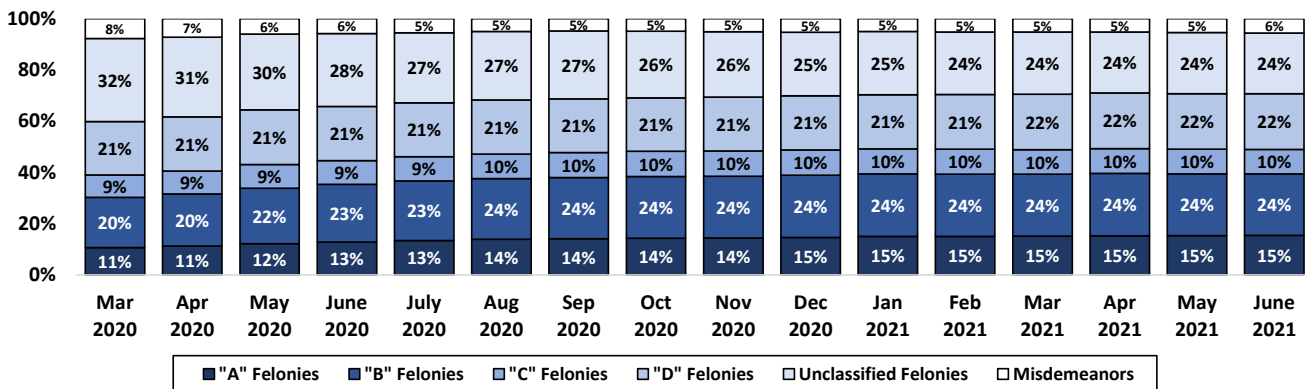


Chart 2 contains monthly operations data for May 2021 and daily counts reported on June 1, 2021. Asterisks (*) indicate the daily count on June 1st. Figures for last month are enclosed by parentheses. Sources: Arrests – CRMVS, via CJIS, Court and probation data - CSSD, all other data - CT DOC.

Chart 2a – Changes to the DOC population by charge class



Between March 2020 and June 2021, a period of 16 months, Connecticut's correction population (jail and prison) fell 27%. The decline has varied across classes of misdemeanor and felony charges and resulted in substantial changes to the composition of the population. This phenomenon is one of many that the COVID-19 pandemic has helped bring about.

In March 2020, 32% of the correction population were being held on unclassified felonies (mostly for probation violations or drug offenses).

By June 2021, this percentage dropped 8 points (to 24%). People whose most serious charge is a misdemeanor, now account for only 6 percent of the correction population (down 2 points from March 2020).

Today people with a Felony A or B convictions account for 39% of the correction population, up from 31% in March 2020. Murder is now the most common offense among people held at the DOC.

Table 2 - First-of-month totals

	2021	2021	2021	2020	% Change	
	Apr. 1	May 1	June 1	June 1	Monthly	Annual
DOC Facilities						
Federal/Other	102	98	93	115	-5.1%	-19.1%
Sentenced	5,551	5,491	5,424	7,347	-1.2%	-26.2%
Special Parole	350	355	356	315	0.3%	13.0%
Pre-trial	2,963	3,004	3,087	2,668	2.8%	15.7%
Total	8,966	8,948	8,960	10,445	0.1%	-14.2%
DOC Community						
Transfer Parole	171	108	75	147	-30.6%	-49.0%
Parole/ Parcom Total	897	961	997	936	3.7%	6.5%
Parole	717	779	823	778	5.6%	5.8%
Parcom @ CT	180	182	174	158	-4.4%	10.1%
Furlough	26	27	22	105	-18.5%	-79.0%
Trans Placement	78	77	77	96	0.0%	-19.8%
DUI/Home confine.	25	29	29	115	0.0%	-74.8%
Halfway House Total	798	780	773	843	-0.9%	-8.3%
Comm Release	372	375	377	418	0.5%	-9.8%
TS	11	5	3	16	-40.0%	-81.3%
Parole	125	128	131	124	2.3%	5.6%
Transfer Parole	20	19	18	20	-5.3%	-10.0%
Special Parole	270	253	244	265	-3.6%	-7.9%
TS	224	201	188	559	-6.5%	-66.4%
Nursing home	0	1	0	4	-100.0%	-100.0%
Special Parole	1,814	1,813	1,736	2,159	-4.2%	-19.6%
Total	4,033	3,997	3,897	4,964	-2.5%	-21.5%

Table 2a - Monthly admissions, releases & discharges

	2021	2021	2021	2020	% Change	
	MAR	APR	MAY	MAY	Monthly	Annual
Admissions						
Federal/Other	23	16	22	12	37.5%	83.3%
Remands	110	103	95	88	-7.8%	8.0%
DUI	0	2	2	0	0.0%	-
Transfer Parole	4	2	0	0	-100.0%	-
Parole	20	12	15	13	25.0%	15.4%
Trans Plac/Furlough	1	4	1	2	-	-
HWH	25	27	16	15	-40.7%	6.7%
TS	6	6	5	9	-16.7%	-44.4%
Special Parole	54	50	56	46	12.0%	21.7%
New Sentence	80	67	84	2	25.4%	4100.0%
VOP	21	15	17	2	-	-
Pre-trial	831	747	754	490	0.9%	53.9%
Total	1,044	933	955	592	2.4%	61.3%
Releases and discharges						
Transfer Parole	21	29	24	46	-17.2%	-47.8%
Parole	61	65	79	76	21.5%	3.9%
Furlough	17	12	14	66	16.7%	-78.8%
Trans. Placement	22	12	20	23	66.7%	-13.0%
Home Confinement DUI	13	8	6	11	-25.0%	-45.5%
HWH	77	70	77	216	10.0%	-64.4%
TS	25	23	29	110	26.1%	-73.6%
Special Parole	81	65	79	105	21.5%	-24.8%
Nursing home	0	0	0	0	-	-
End of Sentence	351	268	291	463	8.6%	-37.1%
Total	668	552	619	1,116	12.1%	-44.5%
Pre-trial Releases*						
From Court	144	141	134	35	-5.0%	282.9%
Release to Bond	404	324	314	293	-3.1%	7.2%

* Totals reflect events, not individual offenders

DOC - Community Release Unit (CRU)

Table 3 - Case reviews and release metrics

	Cases				Approval
	Reviewed	Approved	Denied	Continued	Rate
MAR	351	161	65	45	46%
APR	230	105	32	30	46%
MAY 21	232	104	39	25	45%
MAY 20	380	207	61	39	54%

Note: Figures published here are based on the operational data available at the time of publication. Data in subsequent issues may not agree.

Board of Pardons and Paroles

Table 4 - Parole hearings, new cases

	Parole Hearings	Paroles granted	Grant rate	Granted: Prior Year	Granted: Two Years Prior
MAR	91	58	64%	70	71
APR	103	74	72%	77	67
MAY	94	57	61%	86	78

Table 4a - Other BOPP actions

	Reparole from revocation	Reparole from rescission	Closed interest cases	Special parole cases	Transfer parole cases
MAR	20	0	27	10	25
APR	10	2	14	10	27
MAY 2021	11	0	9	23	13
MAY 2020	51	1	13	17	37

The pre-trial population

Table 5 - Bond ranges for pre-trial detainees

Bond amount	Apr. 1, 2021	May 1, 2021	June 1, 2021	June 1, 2020
Less than \$20K	383	377	366	304
\$20K to < \$50K	388	366	370	386
\$50K to <\$100K	474	504	498	514
\$100K or higher	1,927	1,998	2,076	1,661
Persons w/bonds	3,172	3,245	3,310	2,865
Over \$1M	329	336	348	229

Table 5a - Pre-trial, weeks since admission

Weeks since last DOC admit	Apr. 1, 2021	May 1, 2021	June 1, 2021	June 1, 2020
< 1 week	225	248	226	81
1 to < 3 weeks	198	192	200	176
3 to < 10 weeks	519	569	584	753
10 to < 30 weeks	821	802	849	856
30 wks or more	1,413	1,439	1,454	1,011
Pre-trial prisoners	3,176	3,250	3,313	2,877

Table 5b - Pre-trial admits, new offenders

	MAR 2021	APR 2021	MAY 2021	MAY 2020
Arraignments	1,932	1,692	1,633	1,015
Pre-trial Admits	831	747	754	490
New to DOC	203	172	194	138
% New	24%	23%	26%	28%

Court Support Services Division

Table 6 - The Jail Reinterview Program

	Pretrial admissions	Offender interviews	Offenders released	Released last year
MAR	831	688	225	238
APR	747	648	166	247
MAY	754	597	174	189

Table 6a - Pre-trial bail and probation caseloads

	Pretrial Bail Case Starts	Client Supv. Starts	Split Sentence Starts	Pretrial bail cases
MAR	2,050*	1,004	210	12,665*
APR	2,050*	946	180	12,665*
MAY	2,050*	945	171	12,665*
MAY '20	2,050*	1,123	313	12,665*

* CSSD estimates

Chart 3 – Prison population

First week of the month, avg. daily count (ADC)

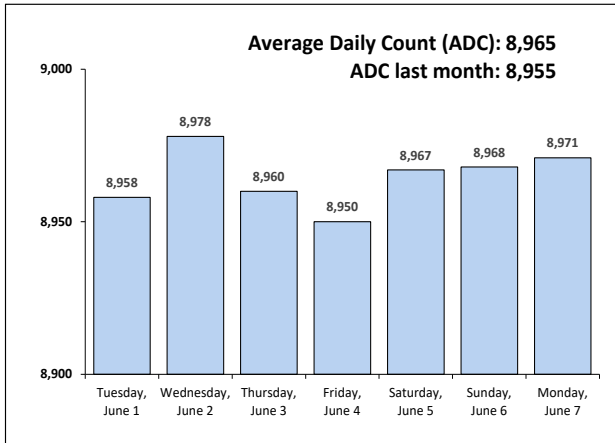


Chart 6 – Monthly DOC Admissions

May 2020 through May 2021

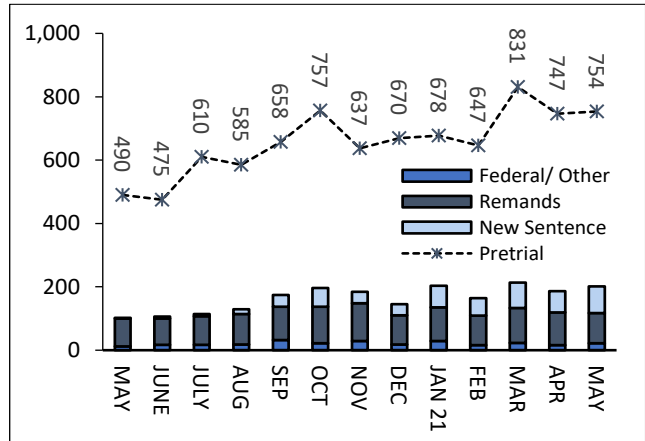


Chart 4 – Prison population, first-of-month

2018, 2019, 2020 and 2021

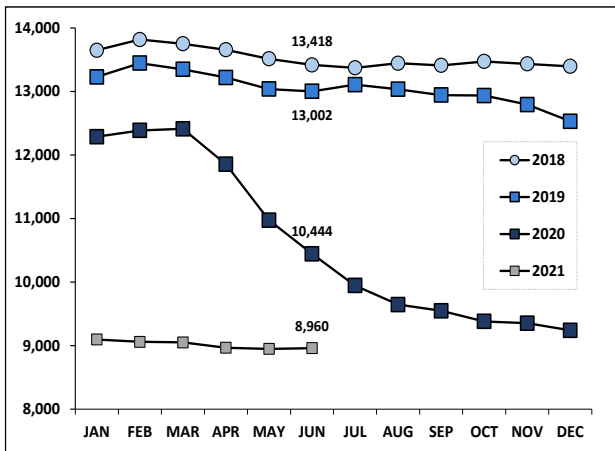


Chart 7– Remands from community release

May 2021

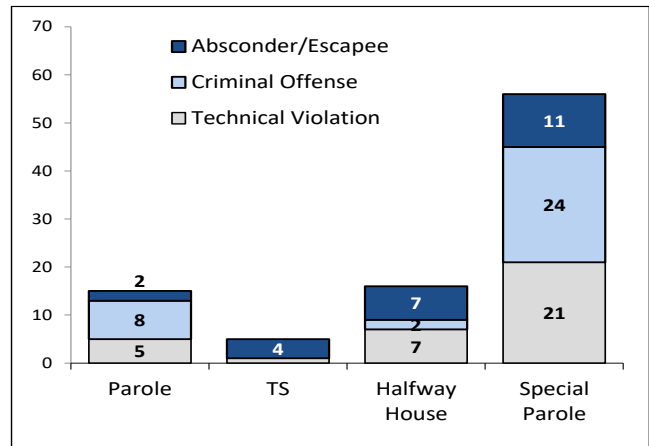


Chart 5 – Statewide Arrests

2020 and 2021

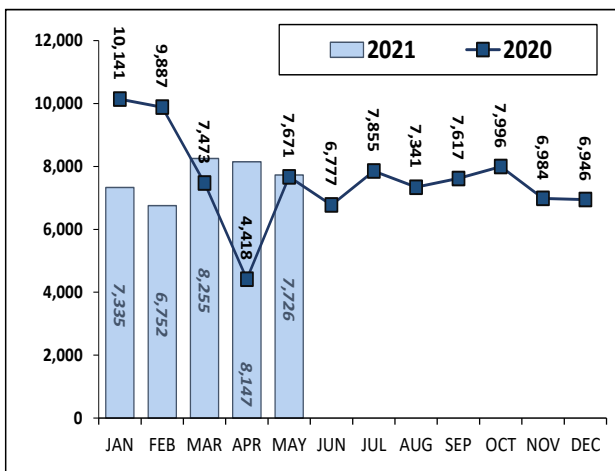
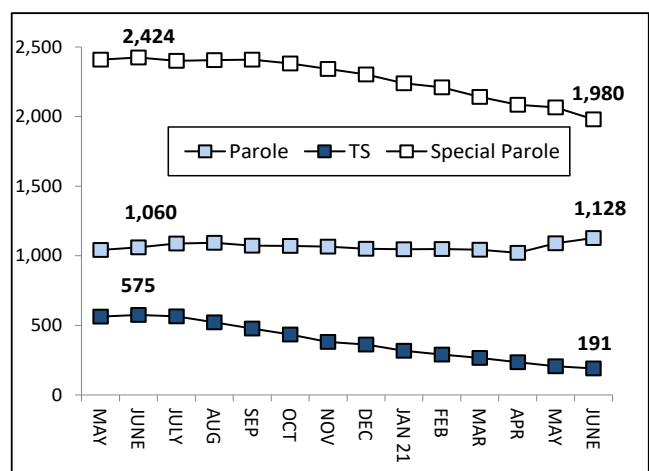


Chart 8 – DOC community supervision

May 1, 2020 through Jun 1, 2021



Note: Data for all charts, except for Chart 5, was supplied by CT DOC. Data for Chart 5 are for new case starts in the state Criminal Motor Vehicle System (CRMVS). Chart 8 includes offenders in halfway houses.