

# OPM - Criminal Justice Policy & Planning Division

# Monthly Indicators Report

## Highlights

- On November 1, Connecticut's prisons and jails held 9,353 people, nearly the same as one month ago, but 27% fewer than November 2019, there was 12,793 incarcerated people.
- Chart 2a shows, somewhat inaccurately, "0" people in the DOC affiliated nursing home. People transferred to and treated at that facility can be supervised under a number of statuses, including parole. At last count, approximately 17 individuals, under the custody of the DOC were being treated at the nursing facility.
- Approval rates of the DOC's Community Release Unit dipped below 40% for the first time since its inception in 2015. In addition to a much smaller pool of candidates (the sentenced population is down more than 33% compared to last year) the flow of candidates for review by CRU has changed significantly as the system adapts to functioning in a global pandemic. The CRU has seen far fewer packages for case types with historically high approval rates.
- The number of special parolees supervised by the DOC continues to decrease. Between November 1, 2019 and this month, the number of special parolees decreased 6%, from 2,490 to 2,342 people. Newly instituted early terminations of special parole, conducted by the Board of Pardons and Paroles, are contributing to this change: During the month of October, 29 special parolees were discharged early following careful review of their individual cases.

## Prison Population Forecast

Last month's report indicated that the prison population appeared to be stabilizing. The previous 30 days bear that out. With roughly equal numbers of inputs and outputs from the DOC, in October the prison population decreased by net 8.

Rebounding from historic lows, over the last two months admissions to Connecticut's prisons and jails increased 33%. Per usual, nearly 80%, are pretrial admissions, driving an uptick in the pretrial population (see chart 2 and table 2).

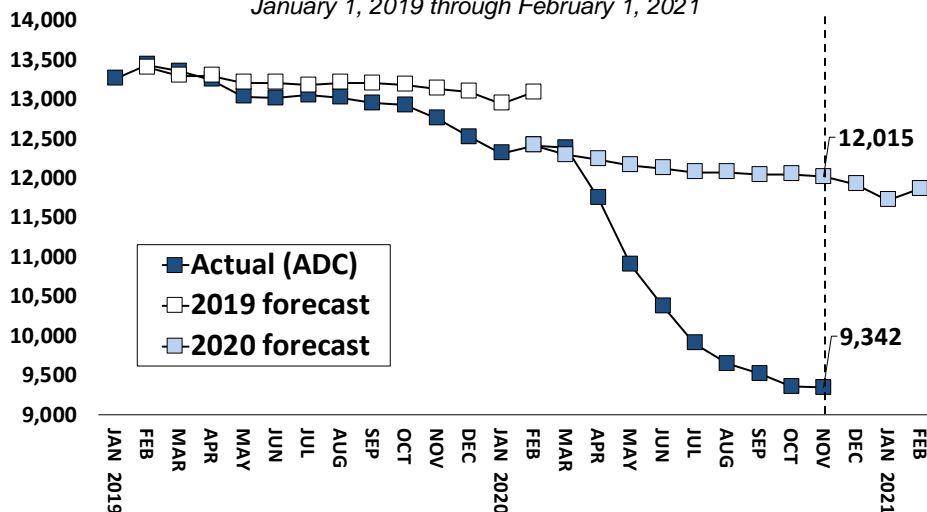
Balancing admissions, the pretrial population has three exit pathways. Two directly impact the overall population and are tracked by OPM in chart and table 2. Pretrial detainees are able to leave the DOC by posting bond or by court order while on a court trip. A third, slightly less well understood, exit ramp for the pretrial population is transition to the sentenced population. Pretrial detainees who receive a sentence (with time to serve) change status while remaining incarcerated, reducing the pretrial population, but not the overall (total) DOC count because these people count among the sentenced population. Transitioning to the sentenced population opens doors for discretionary release and the award of RREC which can marginally reduce an offenders length of stay.

**TABLE 1 – Prison Population Forecast**

	Avg. Daily Count	OPM 2020 Forecast	Inmate difference
JAN '20	12,315	-	-
FEB	12,413	12,413	-
MAR	12,382	12,293	-89
APR	11,751	12,234	483
MAY	10,903	12,163	1,260
JUN	10,375	12,120	1,745
JUL	9,907	12,072	2,165
AUG	9,644	12,074	2,430
SEP	9,521	12,044	2,523
OCT	9,357	12,046	2,689
NOV	9,342	12,015	2,673
DEC		11,922	-
JAN '21		11,722	-
FEB		11,867	-

*Avg. Daily Count (ADC) for 1st week of month*

**Chart 1 – Actual prison population against the OPM forecasts**  
January 1, 2019 through February 1, 2021



## Chart 2 - Criminal justice, monthly counts and flows

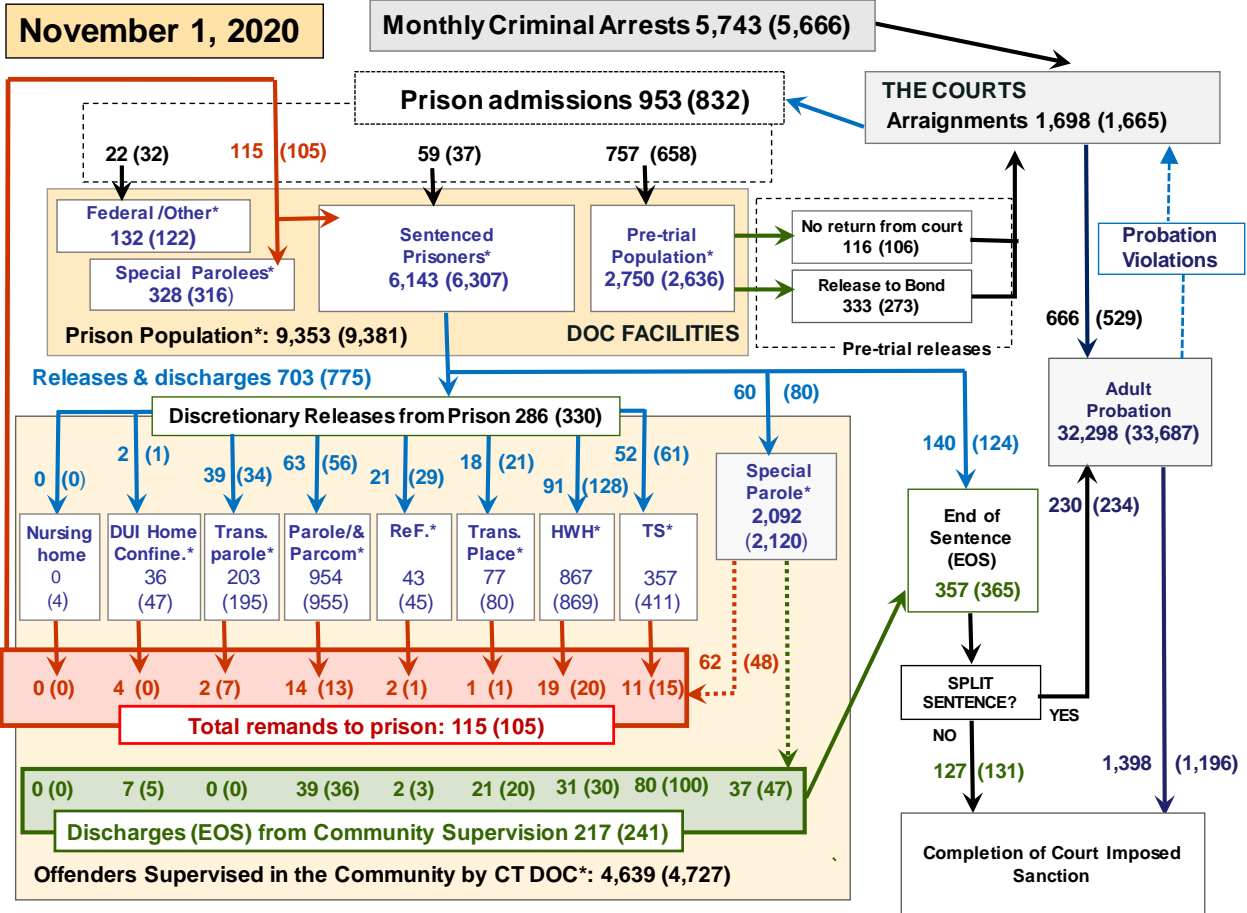
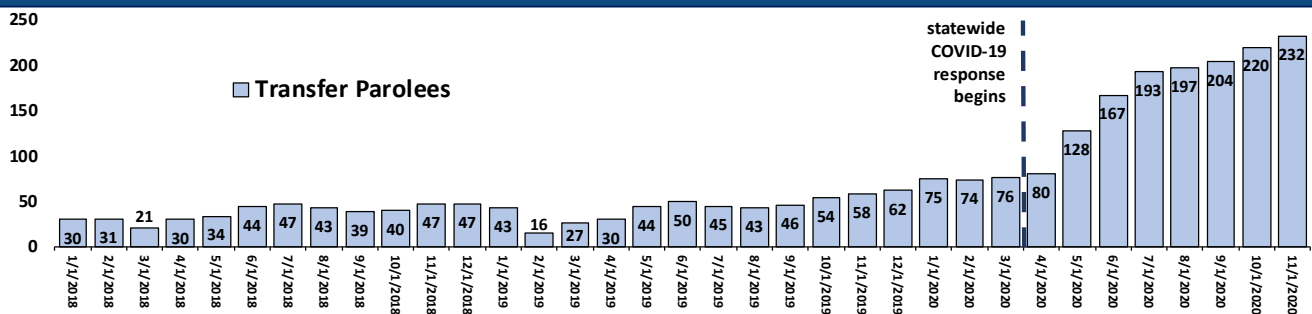


Chart 2 contains monthly operations data for October 2020 and daily counts reported on November 1, 2020. Asterisks (\*) indicate the daily count on November 1<sup>st</sup>. Figures for last month are enclosed by parentheses. Sources: Arrests – CRMVS, Court and probation data - CSSD, all other data - CT DOC.

## Chart 2a – Transfer Parole during the public health emergency



By general statute (CGS: 54-125h), an offender who has already been granted parole may be released to transfer parole up to 18 months prior to their actual parole date. Offenders on transfer parole face the same or, in some cases, stricter supervision conditions than offenders on parole.

The Board of Pardons and Paroles trialed a return of transfer parole in July 2016 to evaluate whether the reintroduction of transfer parole was warranted. Over time the numbers of transfer

parolees in the community grew, leveling off around 50 each month. In mid-April the Chairman of the Board of Pardons and Paroles issued an order granting transfer parole all non-violent (50%) offenders in voted to parole status and prospectively to all non-violent (50%) offenders granted parole during this public health and civil preparedness emergency. The impact of this decision hearings began to manifest in May as the number of transfer parolees increased from 80 to 128 and continues to grow, reaching 232 by November 1<sup>st</sup>.

**Table 2 - First-of-month totals**

	2020		2019		% Change	
	Sept. 1	Oct. 1	Nov. 1	Nov. 1	Monthly	Annual
<b>DOC Facilities</b>						
Federal/Other	124	122	132	143	8.2%	-7.7%
Sentenced	6,532	6,307	6,143	9,241	-2.6%	-33.5%
Special Parole	308	316	328	349	3.8%	-6.0%
Pre-trial	2,584	2,636	2,750	3,060	4.3%	-10.1%
<b>Total</b>	<b>9,548</b>	<b>9,381</b>	<b>9,353</b>	<b>12,793</b>	<b>-0.3%</b>	<b>-26.9%</b>
<b>DOC Community</b>						
Transfer Parole	178	195	203	49	4.1%	314.3%
Parole/ Parcom Total	949	955	954	946	-0.1%	0.8%
Parole	781	780	774	790	-0.8%	-2.0%
Parcom @ CT	168	175	180	156	2.9%	15.4%
Furlough	68	45	43	3	-4.4%	1333.3%
Trans Placement	81	80	77	43	-3.8%	79.1%
DUI/Home confine.	54	47	36	74	-23.4%	-51.4%
Halfway House Total	838	869	867	1,060	-0.2%	-18.2%
Comm Release	400	444	452	527	1.8%	-14.2%
TS	24	23	25	23	8.7%	8.7%
Parole	123	116	111	140	-4.3%	-20.7%
Transfer Parole	26	25	29	9	16.0%	222.2%
Special Parole	265	261	250	361	-4.2%	-30.7%
TS	454	411	357	435	-13.1%	-17.9%
Nursing home	5	4	0	4	-100.0%	-100.0%
Special Parole	2,144	2,120	2,092	2,129	-1.3%	-1.7%
<b>Total</b>	<b>4,771</b>	<b>4,727</b>	<b>4,639</b>	<b>4,743</b>	<b>-1.9%</b>	<b>-2.2%</b>

**Table 2a - Monthly admissions, releases & discharges**

	2020		2019		% Change	
	August	Sept.	Oct.	Oct.	Monthly	Annual
<b>Admissions</b>						
Federal/Other	18	32	22	87	-31.3%	-74.7%
Remands	96	105	115	142	9.5%	-19.0%
DUI	2	7	6	7	-	-
Parole	20	13	14	23	7.7%	-39.1%
Trans Plac/Furlough	1	2	3	1	-	-
HWH	24	20	19	32	-5.0%	-40.6%
TS	8	15	11	14	-26.7%	-21.4%
Special Parole	42	48	62	65	29.2%	-4.6%
New Sentence	15	37	59	219	59.5%	-73.1%
VOP	2	5	17	63	-	-
Pre-trial	585	658	757	1,224	15.0%	-38.2%
<b>Total</b>	<b>714</b>	<b>832</b>	<b>953</b>	<b>1,672</b>	<b>14.5%</b>	<b>-43.0%</b>
<b>Releases and discharges</b>						
Transfer Parole	20	34	39	10	14.7%	290.0%
Parole	51	56	63	73	12.5%	-13.7%
Furlough	24	29	21	4	-27.6%	425.0%
Trans. Placement	14	21	18	13	-14.3%	38.5%
Home Confinement DUI	1	1	2	22	100.0%	-90.9%
HWH	71	128	91	125	-28.9%	-27.2%
TS	51	61	52	142	-14.8%	-63.4%
Special Parole	87	80	60	124	-25.0%	-51.6%
Nursing home	0	0	0	0	-	-
End of Sentence	360	365	357	593	-2.2%	-39.8%
<b>Total</b>	<b>679</b>	<b>775</b>	<b>703</b>	<b>1,106</b>	<b>-9.3%</b>	<b>-36.4%</b>
<b>Pre-trial Releases*</b>						
From Court	58	106	116	527	9.4%	-78.0%
Release to Bond	279	273	333	366	22.0%	-9.0%

\* Totals reflect events, not individual offenders

**DOC - Community Release Unit (CRU)**

**Table 3 - Case reviews and release metrics**

	Cases				Approval Rate
	Reviewed	Approved	Denied	Continued	
Aug.	327	148	58	39	45%
Sept.	361	149	56	45	41%
Oct.	302	119	47	38	39%
Oct. '19	668	297	123	97	44%

Note: Figures published here are based on the operational data available at the time of publication. Data in subsequent issues may not agree.

**Board of Pardons and Paroles**

**Table 4 - Parole hearings, new cases**

	Parole Hearings	Paroles granted	Grant rate	Paroles granted, 2019	Paroles granted, 2018
Aug.	95	68	72%	68	73
Sept.	150	102	68%	66	82
Oct.	129	78	60%	72	52

**Table 4a - Other BOPP actions**

	Reparole from revocation	Reparole from rescission	Closed interest cases	Special parole cases	Transfer parole cases
Aug. 2020	18	1	14	9	34
Sept. 2020	21	0	13	21	50
Oct. 2020	19	0	19	15	36
Oct. 2019	32	1	21	29	13

**The pre-trial population**

**Table 5 - Bond ranges for pre-trial detainees**

Bond amount	Sept. 1, 2020	Oct. 1, 2020	Nov. 1, 2020	Nov. 1, 2019
Less than \$20K	312	328	359	459
\$20K to < \$50K	321	346	386	452
\$50K to < \$100K	441	423	454	519
\$100K or higher	1,687	1,711	1,734	1,712
Persons w/bonds	2,765	2,808	2,933	3,142
Over \$1M	258	265	273	199

**Table 5a - Pre-trial, weeks since admission**

Weeks since last DOC admit	Sept. 1, 2020	Oct. 1, 2020	Nov. 1, 2020	Nov. 1, 2019
< 1 week	201	210	220	335
1 to < 3 weeks	153	167	202	287
3 to < 10 weeks	391	443	480	716
10 to < 30 weeks	676	610	647	885
30 wks or more	1,344	1,383	1,387	923
Pre-trial prisoners	2,765	2,813	2,936	3,146

**Table 5b - Pre-trial admits, new offenders**

	Aug. 2020	Sept. 2020	Oct. 2020	Oct. 2019
Arraignments	1,396	1,665	1,696	2,818
Pre-trial Admits	585	658	757	1,224
New to DOC	137	174	188	275
% New	23%	26%	25%	22%

**Court Support Services Division**

**Table 6 - The Jail Re-interview Program**

	Pre-trial admissions	Offender interviews	Offenders released	Released last year
Aug.	585	537	139	363
Sept.	658	651	156	288
Oct.	757	656	148	342

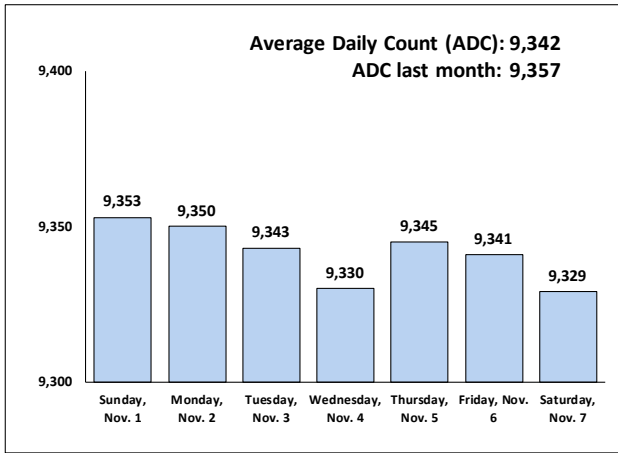
**Table 6a - Pre-trial bail and probation caseloads**

	Pre-trial Bail Case Starts	Client Supv. Starts	Split Sentence Starts	Pre-trial bail cases
Aug.	2,050*	414	229	12,665*
Sept.	2,050*	529	234	12,665*
Oct.	2,050*	666	230	12,665*
Aug. '19	2,050*	1,841	355	12,665*

\* CSSD estimates

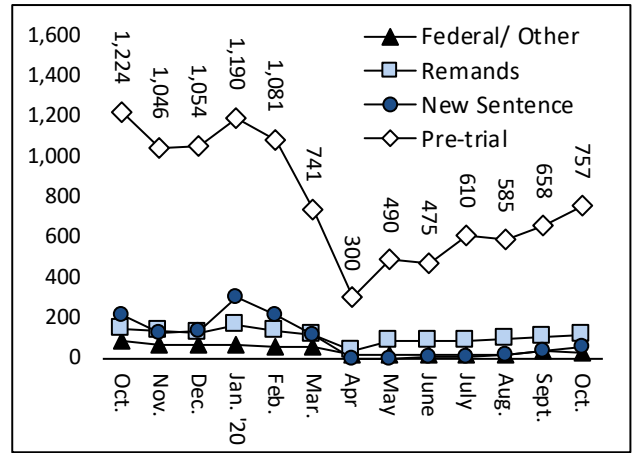
### Chart 3 – Prison population

First week of the month, avg. daily count (ADC)



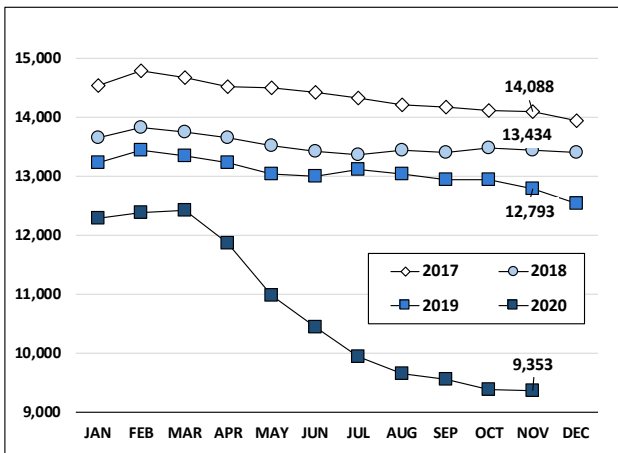
### Chart 6 – Monthly DOC Admissions

October 2019 through October 2020



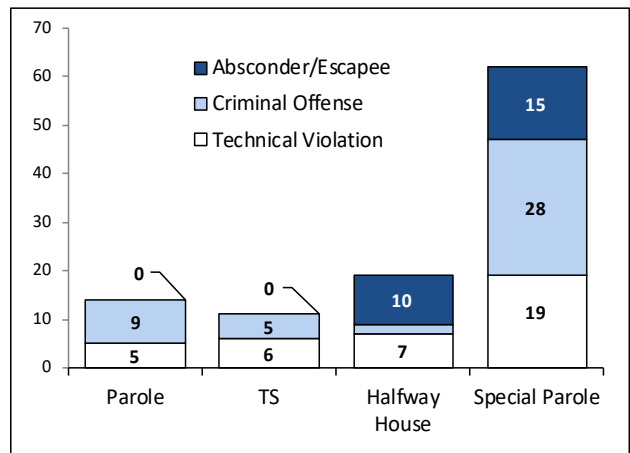
### Chart 4 – Prison population, first-of-month

2017, 2018, 2019 and 2020



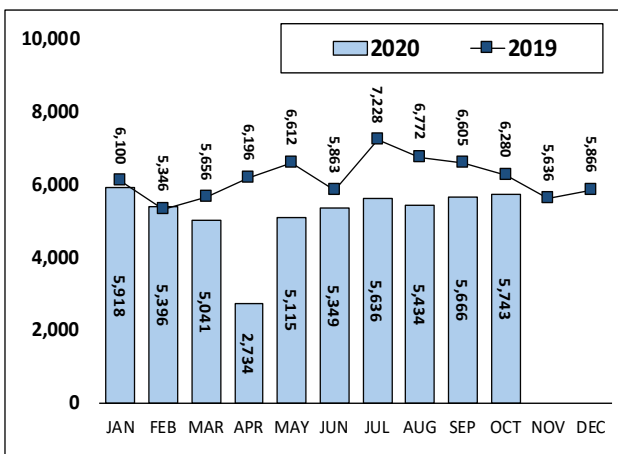
### Chart 7 – Remands from community release

October 2020



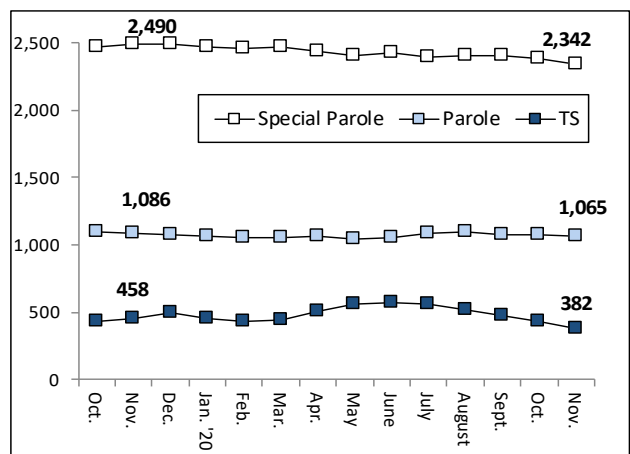
### Chart 5 – Statewide criminal arrests

2019 and 2020



### Chart 8 – DOC community supervision

Oct. 1, 2019 through Nov. 1, 2020



Note: Data for all charts, except for Chart 5, was supplied by CT DOC. Data for Chart 5 are for new case starts in the state Criminal Motor Vehicle System (CRMVS). Chart 8 includes offenders in halfway houses.