

OPM - Criminal Justice Policy & Planning Division

Monthly Indicators Report

Highlights

- On January 1, 2016, 15,500 people were incarcerated in Connecticut prisons and jails. A year ago, on the same date, there were 16,167 prisoners in the state. At the present level, the state prison population is back to where it was in 1997 (see chart 2a).
- In 2015, the year-end drop in the prison population was particularly dramatic. Between December 1st and January 1st, the prison population fell by 3%, or 483 prisoners. The sentenced component of the population declined by 2.1% (253 prisoners); the pre-trial population declined by 5.5%, 190 inmates.
- Steep declines in the prison count during December are generally followed by a January bump. During the first 10 days of January, the prison population grew by 221 inmates; almost two-thirds were newly sentenced prisoners.
- Compared to last year, the prison population was down 4.1% and the number of offenders supervised in the community was up 7.7%. The number of offenders on special parole increased by 13.9%; the number of special parolees in halfway house placements grew by 32.6% (see table 2).
- The Parole Board is gradually increasing the number of cases heard each month. As a consequence, the number of offenders on parole has edged up. Compared to last year, offenders on parole are up by 8.8%.

We are on-line at:
http://www.ct.gov/opm/cwp/view.asp?a=2976&Q=383680&opmNav_GID=1797&opmNav=|46658|

Prison Population Forecast

The state's prison population remained closely aligned with OPM's February 2015 prison population forecast for most of the year. When this happens, it is a general indication that the entire prison system – from admission to re-entry - is operating relatively efficiently.

From OPM's perspective, a long-term steady decline in the size of the prison system would be optimal and for the most part, we have witnessed steady and consistent drops in the prison population since 2008.

There are many contributing factors to these declines. Certainly, crime is down, arrests are down, overall prison admissions are down and there are fewer new people entering the state's prison system each year. There are also many fewer young people incarcerated today than there were five years ago.

In addition, good things are happening at DOC. The Community Re-entry Unit has systematized the re-entry process and brought a degree of accountability to the system. The Parole Board is doing more to review and expedite eligible parole cases. Within a few weeks, OPM will publish a new forecast for the coming year. If current trends hold we could see the prison population drop to 15,000 in the coming year.

TABLE 1 – Prison Population Forecast

	Avg. Daily Count	OPM 2015 Forecast	Inmate difference
JAN '15	16,204	-	-
FEB	16,302	16,343	41
MAR	16,124	16,136	12
APR	16,161	16,079	(82)
MAY	16,093	16,052	(41)
JUN	16,121	16,039	(82)
JUL	16,006	16,061	55
AUG	16,160	16,078	(82)
SEP	16,143	16,085	(58)
OCT	16,094	16,117	23
NOV	16,038	16,112	74
DEC	15,930	15,948	18
JAN '16	15,556	15,686	130
FEB	-	15,917	-

Avg. Daily Count (ADC) for 1st week of month

Chart 1 – Actual prison population against the OPM forecasts
 January 1, 2014 through February 1, 2016

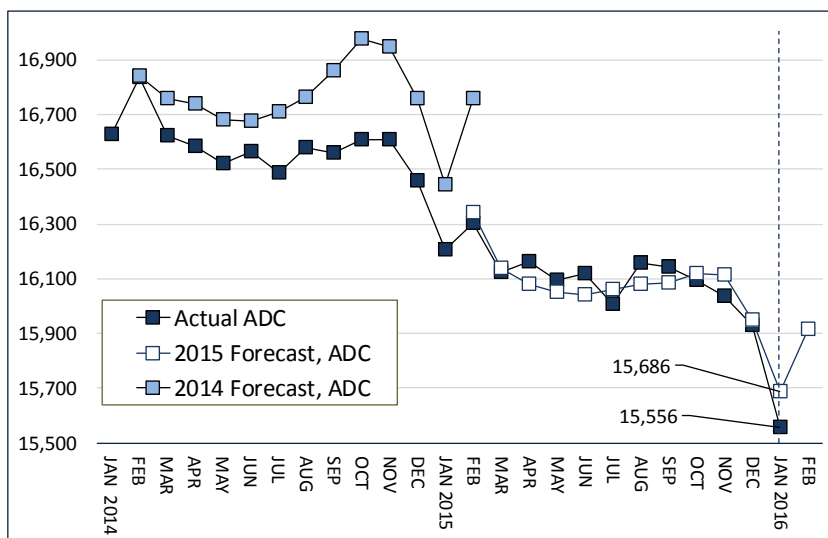
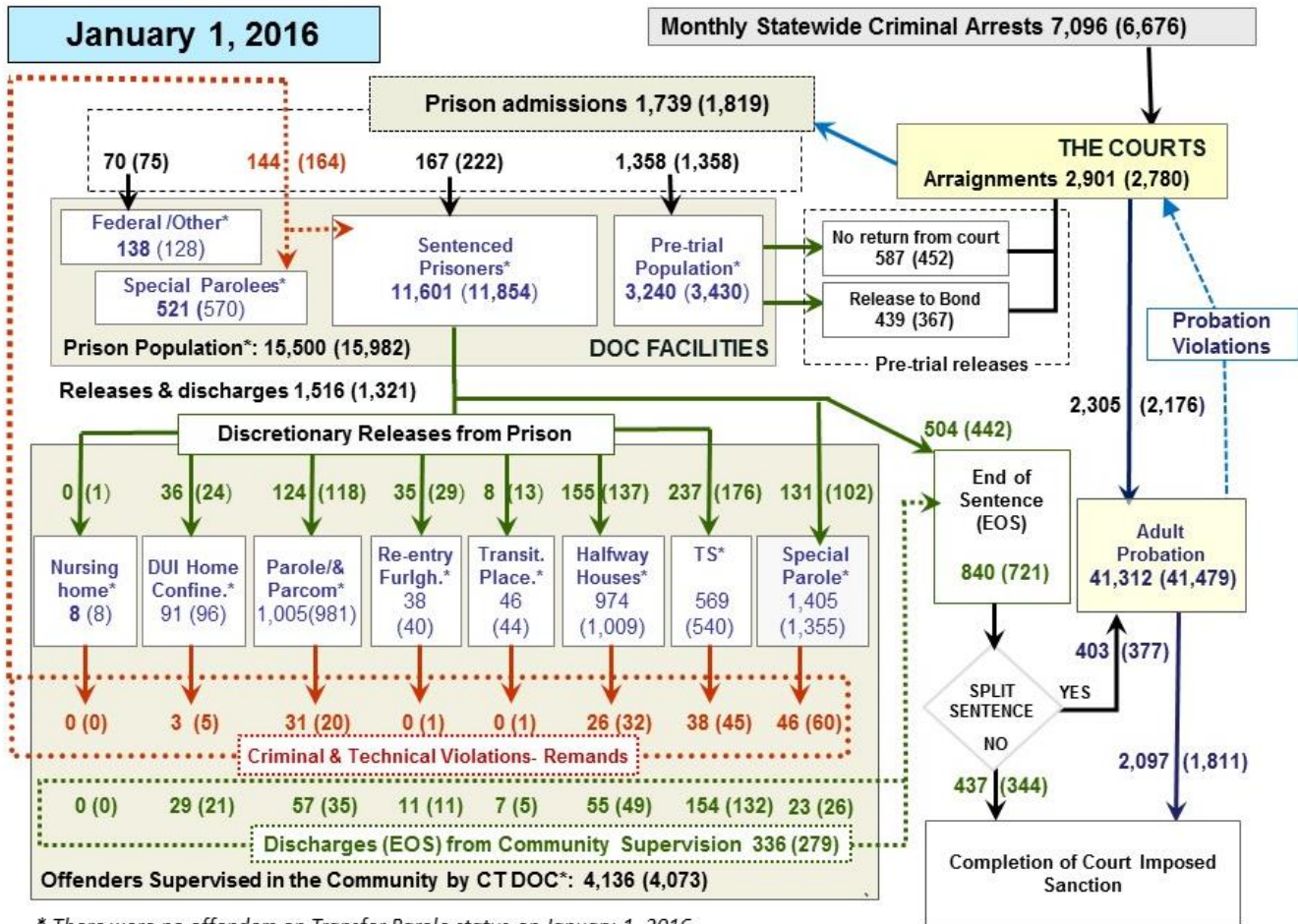


Chart 2 - Criminal justice, monthly counts and flows



* There were no offenders on Transfer Parole status on January 1, 2016.

Chart 2 contains monthly, operation data for December 2015 and daily counts reported on January 1, 2016. Asterisks (*) indicate the daily count on January 1st. Last month's figures are enclosed by parentheses. Sources: Arrests - OBTS, Court and probation data - CSSD, all other data - CT DOC.

Chart 2a – The CT prison population, January 1997 through January 2016

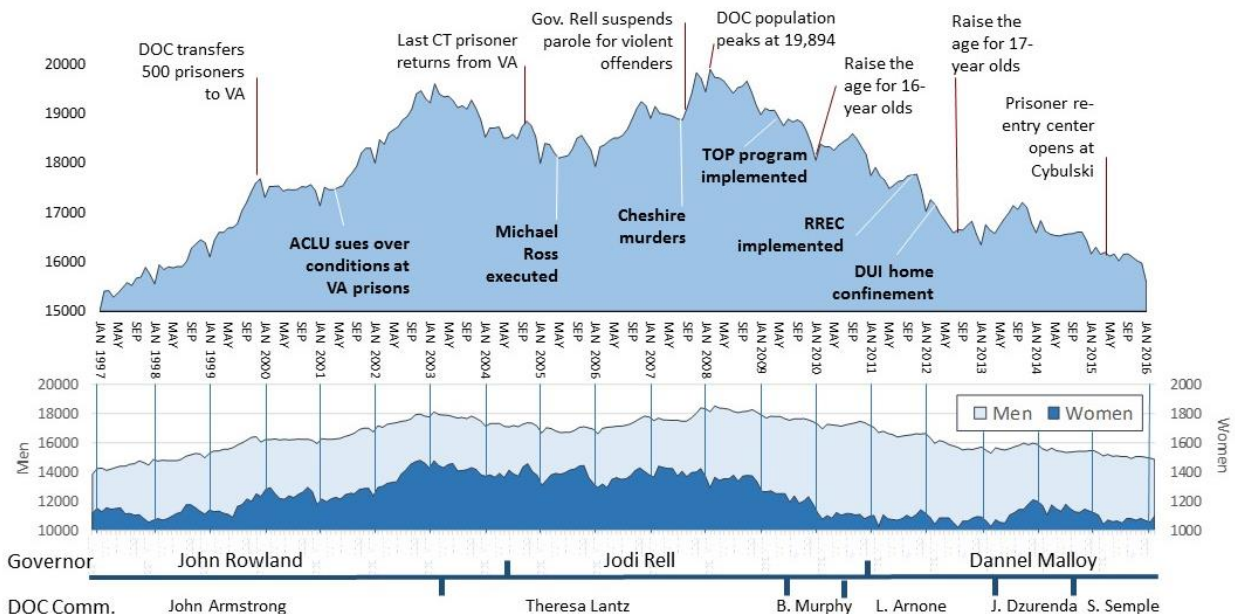


Table 2 – The first-of-month totals

	2015	2015	2016	2015	% Change	
	Nov. 1	Dec. 1	Jan. 1	Jan. 1	Monthly	Annual
DOC Facilities						
Federal/Other	153	128	138	213	7.8%	-35.2%
Sentenced	11,998	11,854	11,601	12,063	-2.1%	-3.8%
Special Parole	528	570	521	449	-8.6%	16.0%
Pre-trial	3,349	3,430	3,240	3,442	-5.5%	-5.9%
Total	16,028	15,982	15,500	16,167	-3.0%	-4.1%
DOC Community						
Transfer Parole	0	0	0	0	-	-
Parole/ Parcom Total	956	981	1,005	929	2.4%	8.2%
Parole	778	804	828	761	3.0%	8.8%
Parcom @ CT	178	177	177	168	0.0%	5.4%
Furlough	27	40	38	16	-	-
Trans Placement	44	44	46	72	4.5%	-36.1%
DUI/Home confine.	99	96	91	92	-5.2%	-1.1%
Halfway House Total	1,017	1,009	974	943	-3.5%	3.3%
Comm Release	586	555	526	646	-5.2%	-18.6%
TS	54	52	46	26	-11.5%	76.9%
Parole	148	163	158	87	-3.1%	81.6%
Transfer Parole	0	0	0	0	-	-
Special Parole	229	239	244	184	2.1%	32.6%
TS	552	540	569	562	5.4%	1.2%
Nursing home	7	8	8	6	-	-
Special Parole	1,327	1,355	1,405	1,233	3.7%	13.9%
Total	4,029	4,073	4,136	3,853	1.5%	7.3%

Table 3 – Admissions, releases & discharges*

	2015	2015	2015	2014	% Change	
	Oct.	Nov.	Dec.	Dec.	Monthly	Annual
Admissions						
Federal/Other	88	75	70	124	-6.7%	-43.5%
Remands	165	164	144	147	-12.2%	-2.0%
DUI	5	5	3	1	-	-
Parole	34	20	31	25	55.0%	24.0%
Trans Plac/Furlough	2	2	0	2	-	-
HWH	23	32	26	35	-18.8%	-25.7%
TS	51	45	38	30	-15.6%	26.7%
Special Parole	50	60	46	54	-23.3%	-14.8%
New Sentence	298	222	167	186	-24.8%	-10.2%
VOP	106	70	59	58	-15.7%	1.7%
Pre-trial	1488	1358	1358	1418	0.0%	-4.2%
Total	2,039	1,819	1,739	1,875	-4.4%	-7.3%
Releases and discharges						
Transfer Parole	0	0	0	0	-	-
Parole	131	118	124	67	5.1%	85.1%
Furlough	24	29	35	17	20.7%	105.9%
Trans. Placement	11	13	18	23	38.5%	-21.7%
Home Confinement DUI	37	24	36	42	50.0%	-14.3%
HWH	148	137	155	140	13.1%	10.7%
TS	201	176	237	158	34.7%	50.0%
Special Parole	110	102	131	90	28.4%	45.6%
Nursing home	0	1	0	0	-	-
End of Sentence	746	721	840	819	16.5%	2.6%
Total	1,408	1,321	1,576	1,356	19.3%	16.2%
Pre-trial Releases*						
From Court	561	452	587	534	29.9%	9.9%
Release to Bond	417	367	439	481	19.6%	-8.7%

* Totals reflect events, not individual offenders

Table 3a – Community Release Unit metrics

	Cases				Approval Rate
	Reviewed	Approved	Denied	Continued	
Oct.	867	394	148	143	45%
Nov.	903	420	137	129	47%
Dec.	953	455	152	152	48%

Board of Pardons and Paroles

Table 4 – Parole hearings, new cases

	Paroles			Paroles	Paroles
	Parole Hearings	granted, 2015	Grant rate	granted, 2014	granted, 2013
Oct.	178	93	52%	110	125
Nov.	170	96	56%	103	124
Dec.	187	122	65%	107	117

Table 4a – Other Board actions

	Reparole from revocation	Reparole from rescission	Closed interest cases	Special parole cases
	Oct.	53	6	32
Nov.	64	4	21	30
Dec.	55	1	33	32

The pre-trial population

Table 5 – Bond ranges for pre-trial detainees

Bond amount	Nov. 1, 2015	Dec. 1, 2015	Jan. 1, 2016	Jan. 1, 2015
Less than \$20K	546	568	557	642
\$20K to <\$50K	606	593	581	588
\$50K to <\$100K	723	717	719	774
\$100K or higher	1,524	1,540	1,501	1,573
Offenders w/bonds	3,399	3,418	3,358	3,577
Over \$1M	178	176	177	194

Table 5a – Pre-trial, weeks since admission

Weeks since last DOC admit	Nov. 1, 2015	Dec. 1, 2015	Jan. 1, 2016	Jan. 1, 2015
< 1 week	495	351	346	356
1 to < 3 weeks	372	415	421	408
3 to < 10 weeks	920	921	862	890
10 to < 30 weeks	942	1,029	994	1,160
30 wks or more	677	706	738	776
Pre-trial prisoners	3,406	3,422	3,361	3,590

Table 5b – Pre-trial admits, new offenders

	Sept. 2015	Oct. 2015	Nov. 2015	Dec. 2015
Arraignments	3,105	3,084	2,780	2,901
Pre-trial Admits	1,474	1,488	1,358	1,358
New to DOC	398	413	367	402
% New	27%	28%	27%	30%

Court Support Services Division

Table 6 – The Jail Re-interview Program

	Pre-trial admissions	Offender interviews	Offenders released	Releases last year
Oct.	1,488	1,885	896	706
Nov.	1,358	1,579	745	804
Dec.	1,358	1,651	883	877

Table 6a – Pre-Trial & split-sentence starts

	Pre-trial Bail Case Starts	Client Supv. Starts	Split Sentence Starts
	Oct.	2,523	2,358
Nov.	2,254	2,176	377
Dec.	2,290	2,305	403

Note: Figures published here are based on operational data available at publication. Data in subsequent issues may not agree.

Chart 3 – Prison population

First week of the month, and ADC

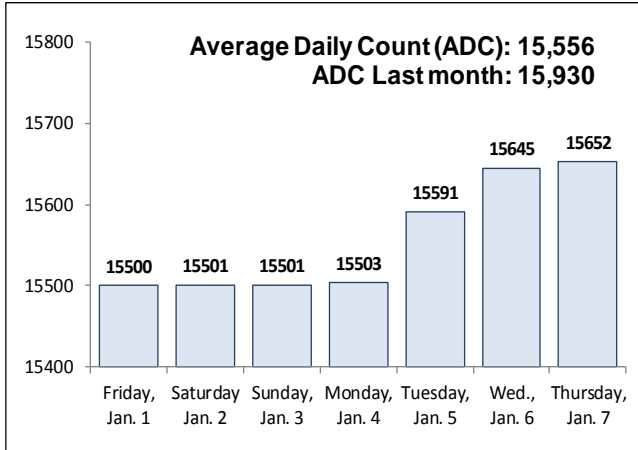


Chart 6 – Monthly DOC Admissions

October 2014 through December 2015

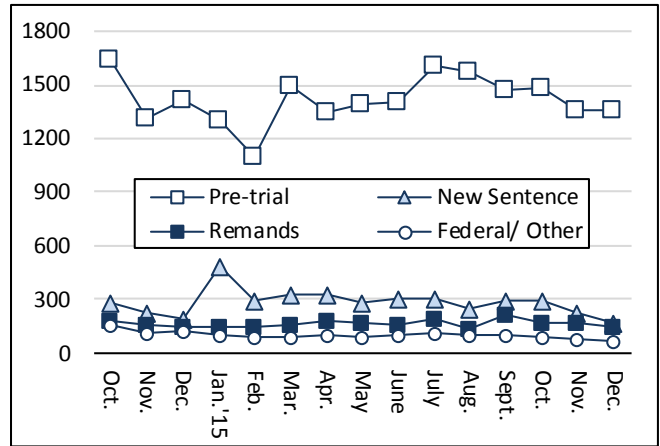


Chart 4 – Prison population, first-of-month

2014, 2015 and 2016

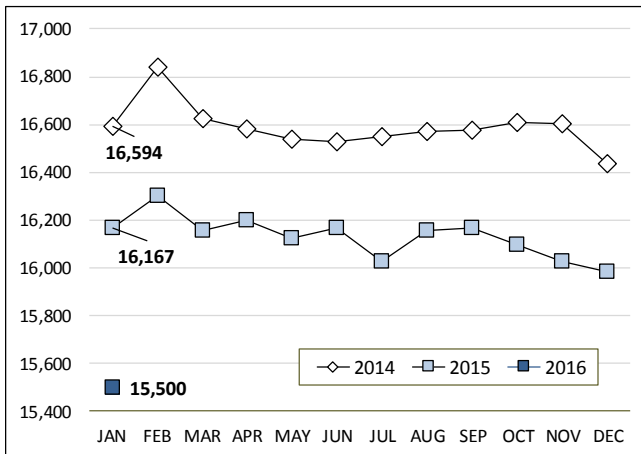


Chart 7– Remands from community release

December 2015

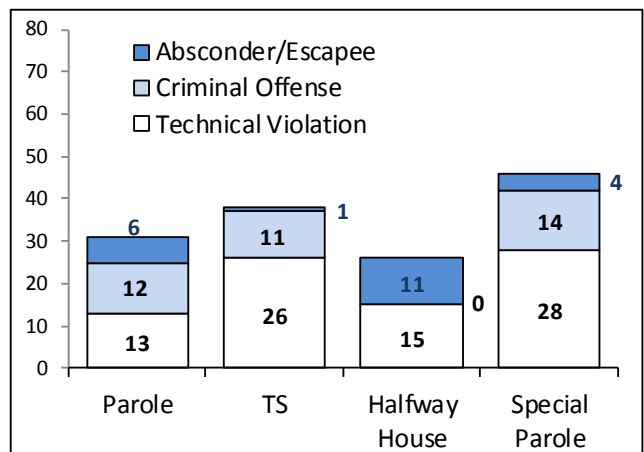


Chart 5 – Statewide criminal arrests

2014 and 2015

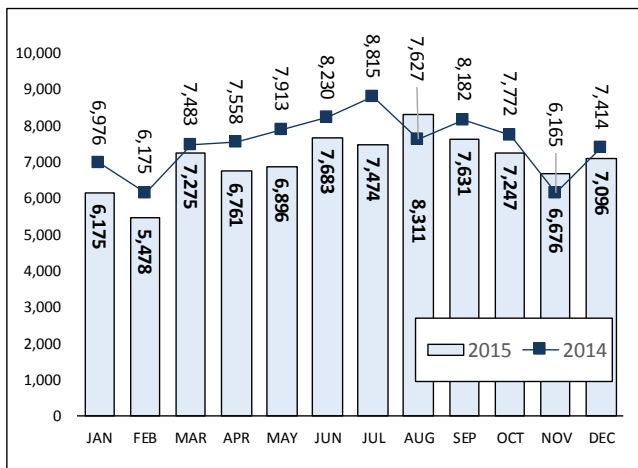
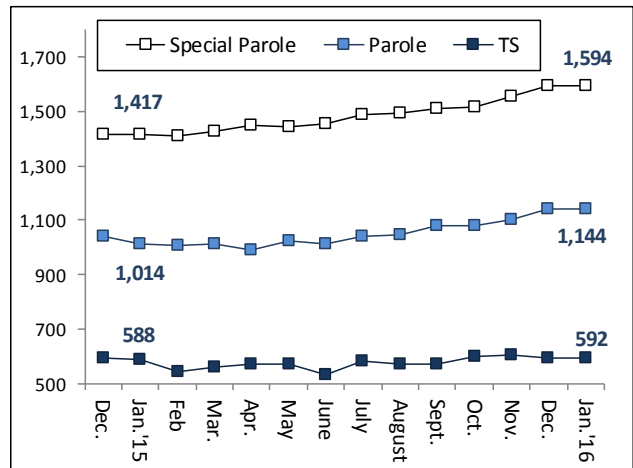


Chart 8 – DOC community supervision

December 1, 2014 through January 1, 2016



Note: Data for all charts, with the exception of Chart 5, was supplied by CT DOC. Data for Chart 5 is based on new case starts in the state Offender-Based Tracking System (OBTS). Chart 8 includes offenders in halfway houses.