

CRIMINAL JUSTICE POLICY & PLANNING DIVISION:

Update on Correctional Population Trends

JUNE 2024

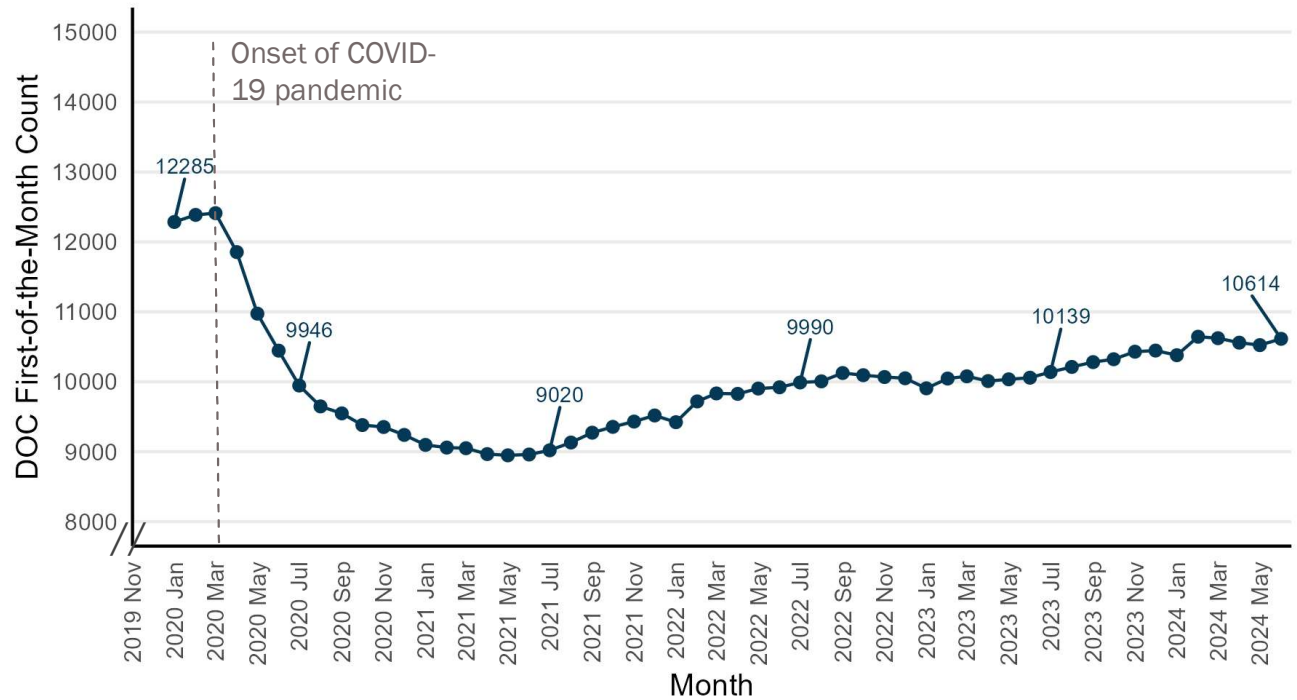
Presented by:

Kevin Neary, Research Unit Director

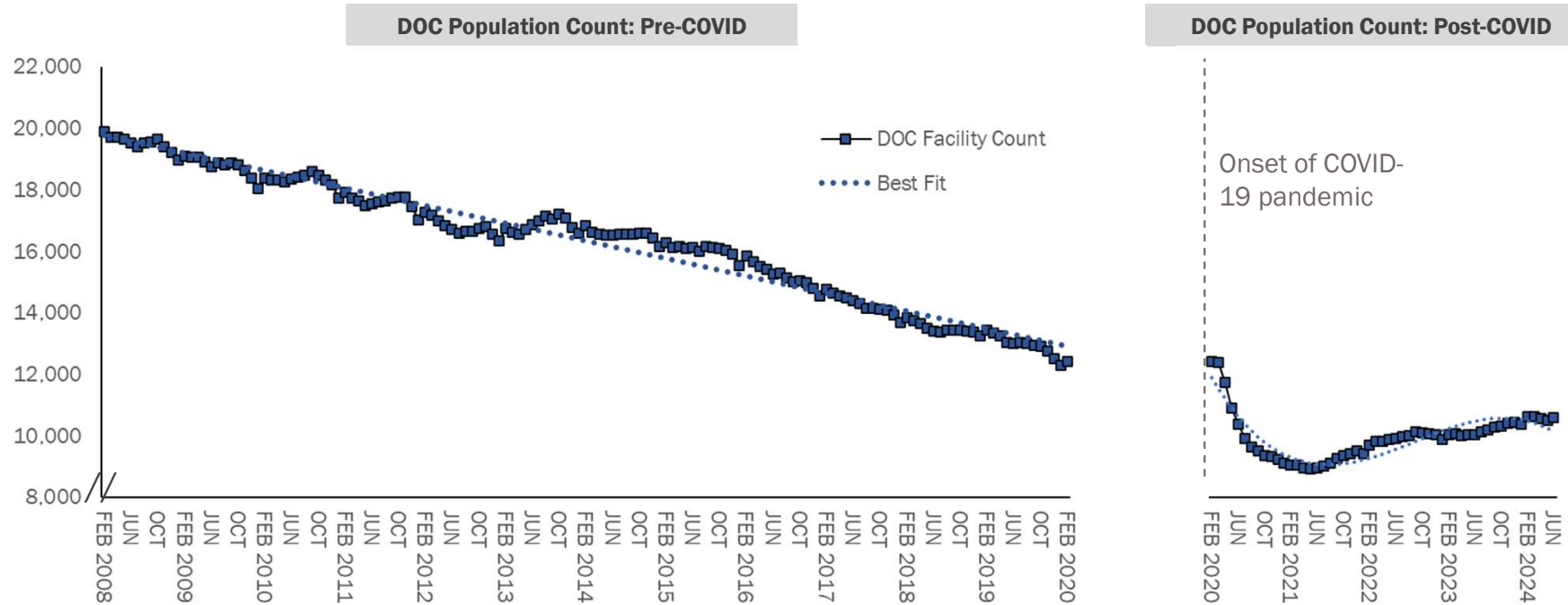
Office of Policy and Management

On June 1, 2024, the DOC facility population counted 10,614, 5.5% higher than the June 2023 population level.

- On February 1, 2020, DOC facilities held 12,413 people. Despite growth following a steep pandemic decline, the June 1, 2024 count remains 14.5% below the pre-pandemic level.
- From a low during the pandemic of just under 9,000 in June 2021, the DOC first-of-the-month count has risen 18.5%.

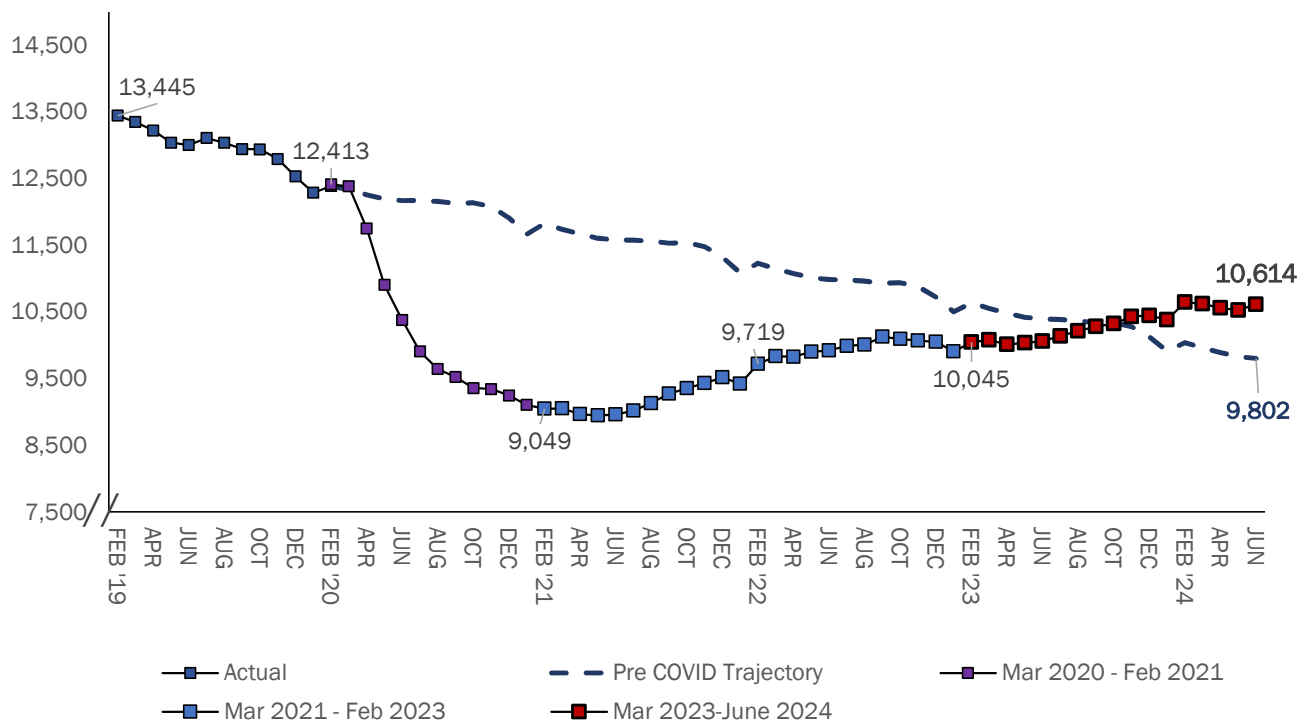


COVID-19 pandemic's impacts on DOC population trends: 2008–2024



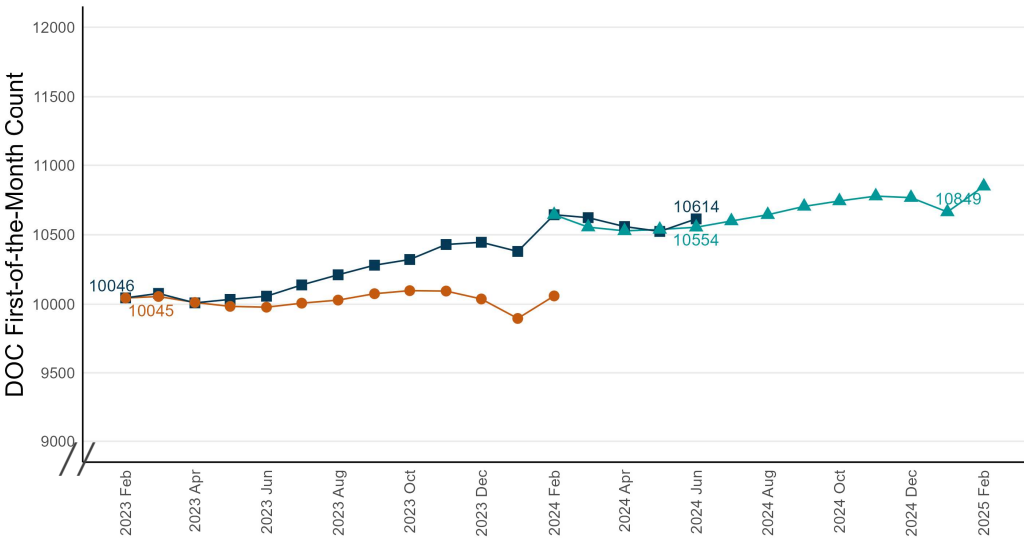
- Between February 2008 and February 2020, the DOC population followed a downward trend with seasonal variation. The pandemic's onset in March 2020 hastened the population reduction before growing gradually in 2022 towards the pre-pandemic trend.

Comparing DOC population changes through June 2024 to the projected pre-pandemic long term trend.



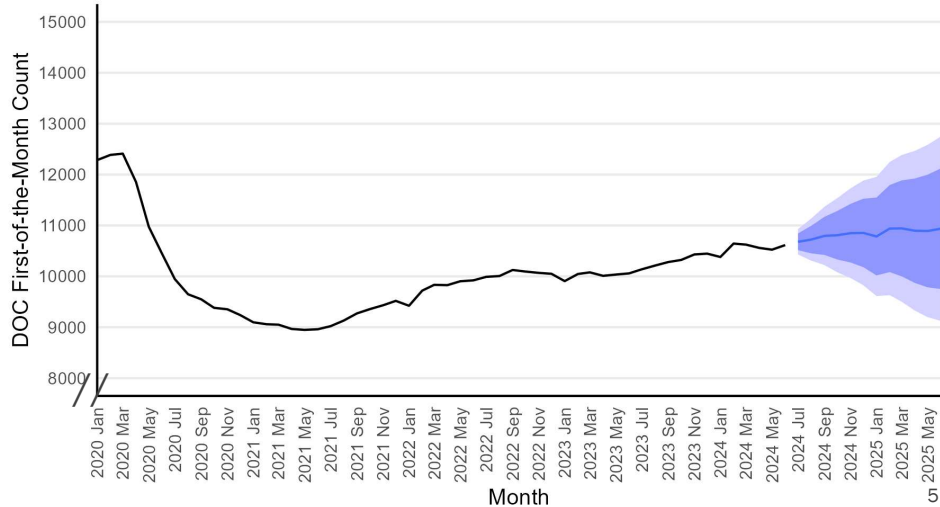
- The DOC population's upward trend that started in June 2022 appeared to be leveling off after February 2023, potentially signaling that the facility count could rejoin its pre-COVID trajectory by 2024.
- OPM CJPPD anticipated that counts would remain level with seasonal fluctuation before converging with the long-term trend to end 2023.
- Instead, by Fall 2023, the DOC count reached the long-term trend, then continued upward in 2024.

Comparing DOC population changes through June 2024 to OPM CJPPD's 2024-2025 correctional population forecast.



- Each month, OPM CJPPD also produces a rolling forecast for the upcoming twelve months to monitor how recent trends may impact the population in the year ahead.
- OPM's rolling forecast mean estimate places the June 1, 2025 DOC population at 10,937, a +3.0% growth from June 2024.

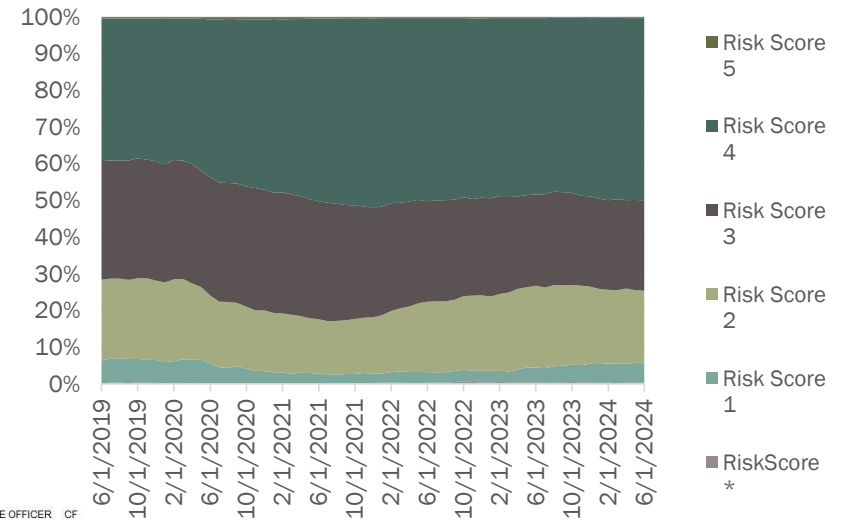
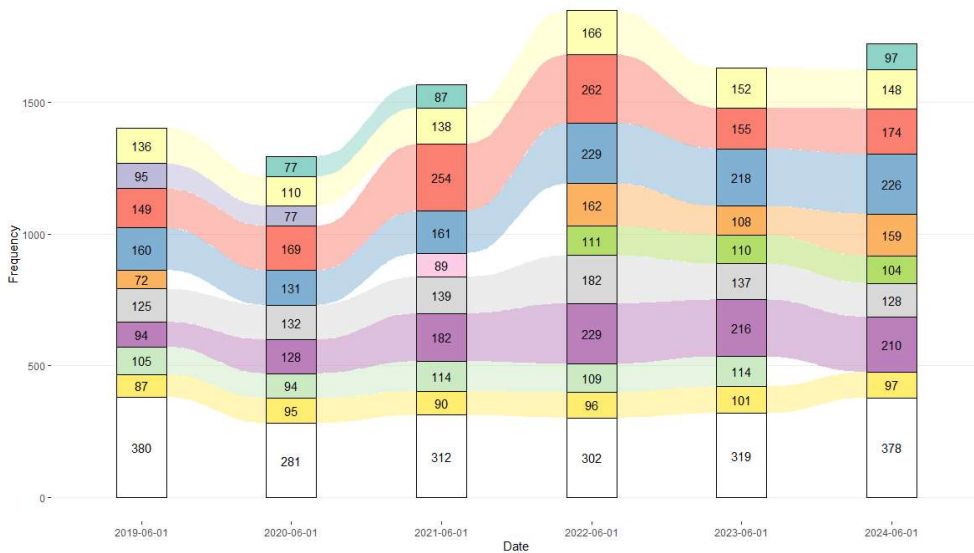
- In February 2024, OPM CJPPD forecast the DOC population to rise 2% from 10,644 to 10,849 over the coming year.
- As of June 1, 2024, the actual DOC count of 10,614 remains in line with OPM's forecast, varying just +0.6%



Over the past 5 years, the share of the DOC facility population with a higher total risk score has grown.

- On June 1, 2019, the DOC facility population stood at 13,002, with 5,060 (38.9%) classified as having a risk score greater than 3.
- Although the DOC count has fallen to 10,614, 5,307 (50.0%) had a risk score classification greater than 3 as of June 1, 2024.

DOC Pretrial Population: 10 Most Frequent Offenses



- A comparison of most frequent controlling offenses among those held pretrial in the DOC shows a 123.4% increase in the number held with a **Murder** offense since June 1, 2019.

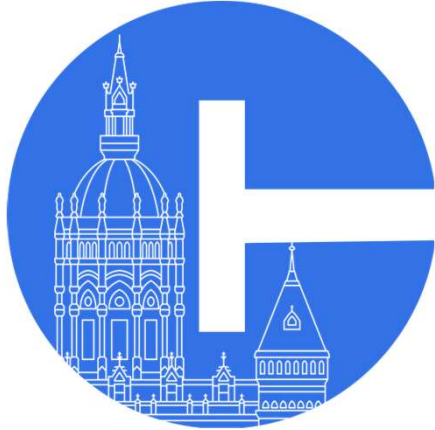
Key Takeaways

- The DOC population has emerged from the pandemic period with a reduced population, forecast to range between 10,500 to 11,000 in the year ahead.
- The DOC population is currently higher than indicated by the pre-pandemic long term trend, and current projections do not indicate any significant population reductions in 2025.
- **Question:** What options may be considered to again drive long-term reductions in Connecticut's correctional population?

Key Takeaways, continued

- The DOC currently has a larger share of the population classified as higher risk, with increases also in the number with violent offenses.
 - OPM CJPPD views this population shift as indicative of effective diversion and other approaches implemented to achieve desired reductions in the DOC facility population.
- **Question:** From an administrative perspective, with a higher need population, what are the:
 - Implications,
 - Opportunities,
 - Programmatic needs, and
 - Resource/Capacity needs?
- **Question:** What are the needs of and potential impacts upon DOC facility staff with this changing population?
 - For example, a 2017 survey of California Correctional officers¹ found that:
 - Officers are exposed to violence at rates roughly comparable to military vets.
 - 1 in 3 have experienced at least one symptom of post-traumatic stress disorder.

1. Lerman, A. (2017) *Officer Health and Wellness: Results from the California Correctional Officer Survey*. University of California, Berkeley.



THANK YOU

For more information, please visit

[HTTPS://PORTAL.CT.GOV/OPM/CJ-ABOUT/HOME PAGE/CJPPD](https://portal.ct.gov/opm/cj-about/homepage/cjppd)