
CONNECTICUT JUDICIAL BRANCH
COURT SUPPORT SERVICES DIVISION

ADULT PROBATION RECIDIVISM

CRIMINAL JUSTICE POLICY & PLANNING DIVISION

MARCH 30, 2023

RECIDIVISM METHODOLOGY

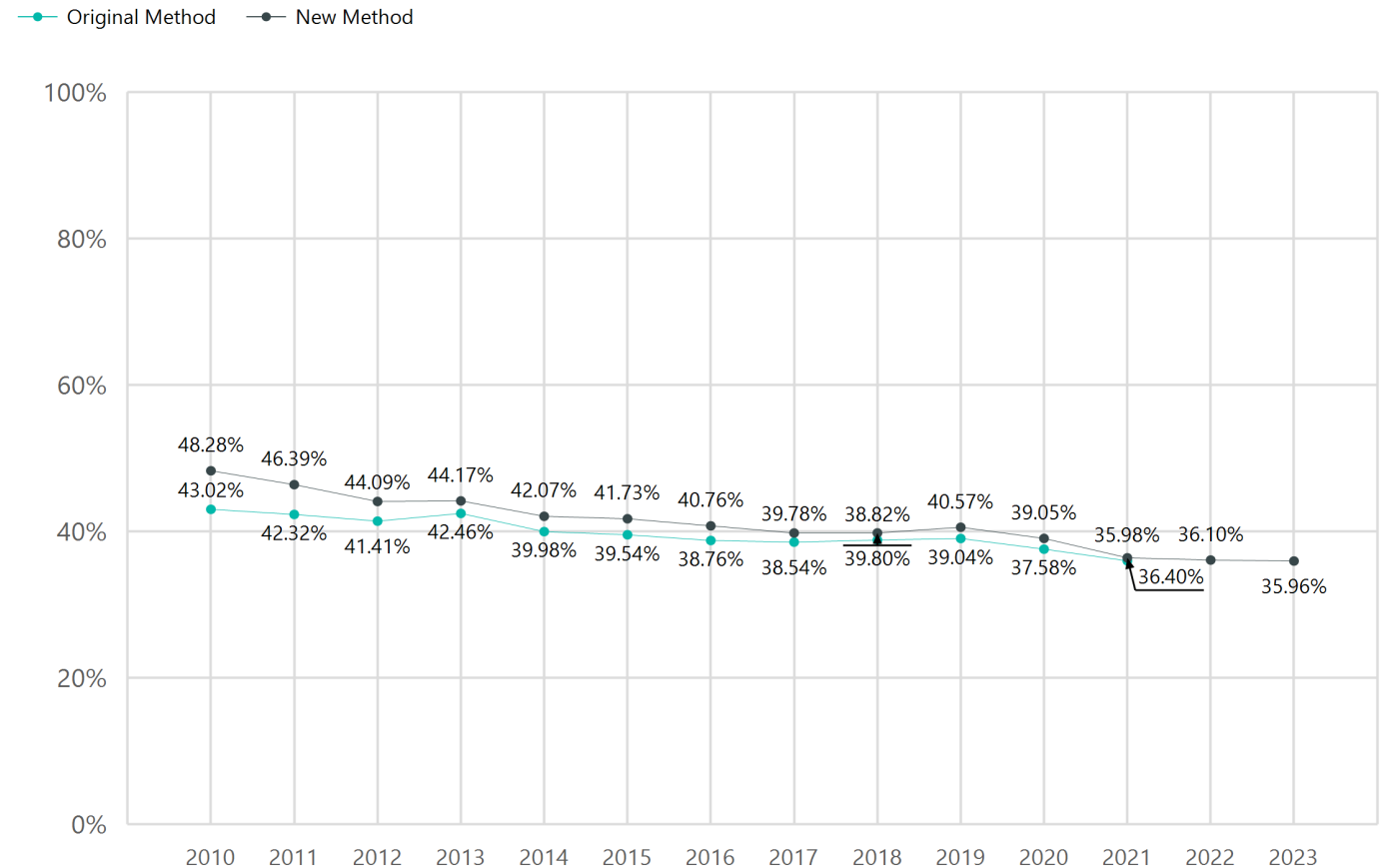
- Recidivism is defined as a new arrest within a standardized exposure period from the start of a period of supervision
- Standard exposure or follow-up periods are examined at 3-, 6-, 12-, and 24-months
- Recent method changes have enhanced recidivism measurement
 - Change in source data from quarterly fingerprint-identified arrests from the Department of Emergency Services and Public Protection (DESPP) to the same data fields from the Judicial Branch CRMVS court system
 - Increased JB-CSSD control over the rules governing statute inclusion into a criminal history lookup provides a more accurate and complete picture of criminal history
 - Improvements to the JB-CSSD name-matching algorithm forges stronger links between persons and their criminal history data
 - A more sensitive match for individuals with surname changes (typically women) has decreased mismatches and increased overall match accuracy

RECIDIVISM COMPARISON BETWEEN OLD AND NEW METHOD

JB-CSSD has re-generated up to twelve years of history using the new method to compare results with previously reported figures.

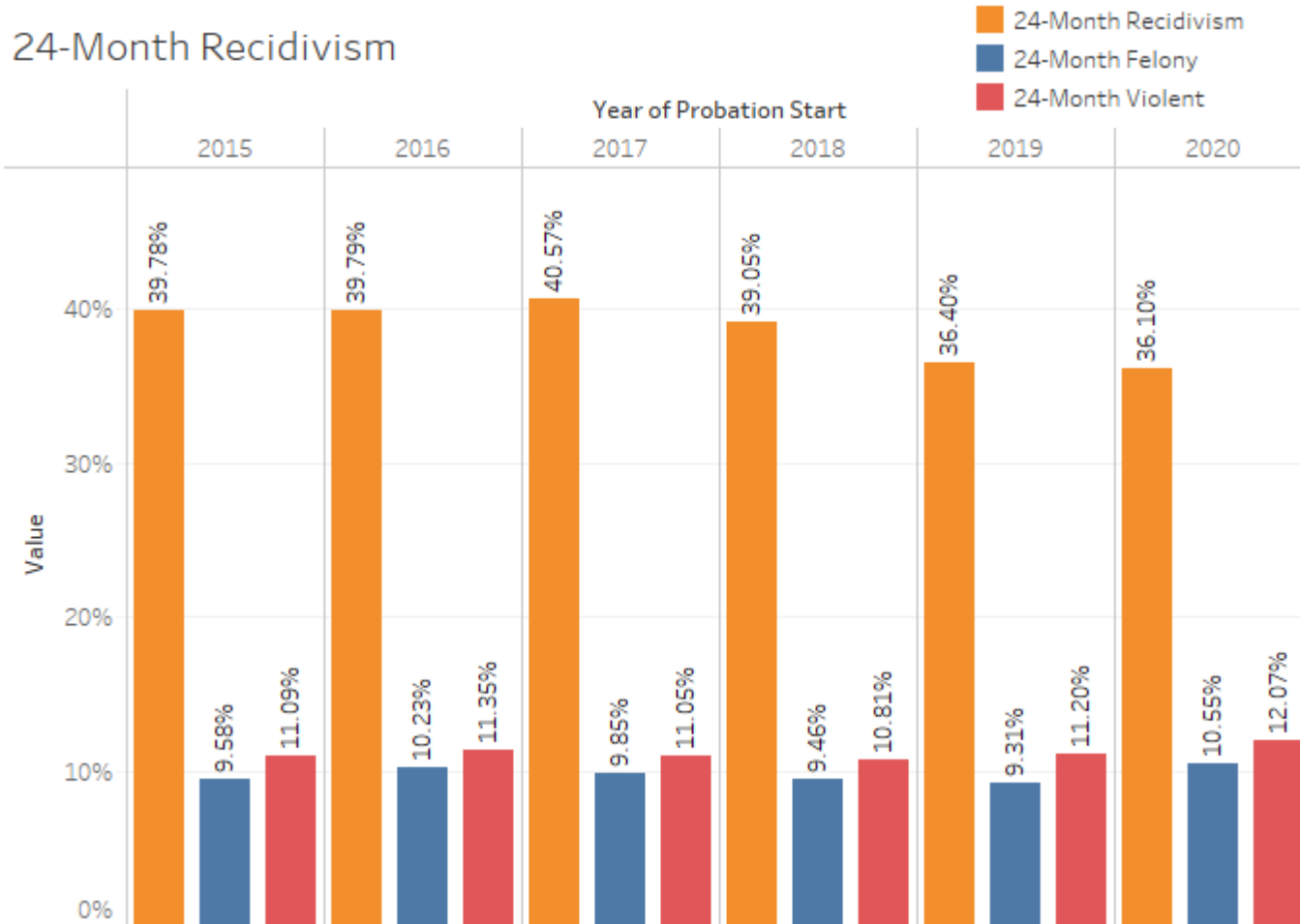
The chart on the right depicts observed differences compared by calendar year and represents the overall effect of the recent data source changes and technical enhancements.

Adult Probation - All, 24 Month Rearrest Rates



RECIDIVISM BY OFFENSE CATEGORY

24-Month Recidivism



The data highlights the recidivism rates based on the re-arrest charge category

- There is a decline in the overall recidivism rate across the six year period
- For clients with a felony re-arrest, the recidivism rate is relatively flat varying between 9.5% and 10.5%
- Similarly, clients re-arrested for a violent offense shows relative stability with rates increasing or decreasing by under one percent across the six year period

25 Most Common Offenses

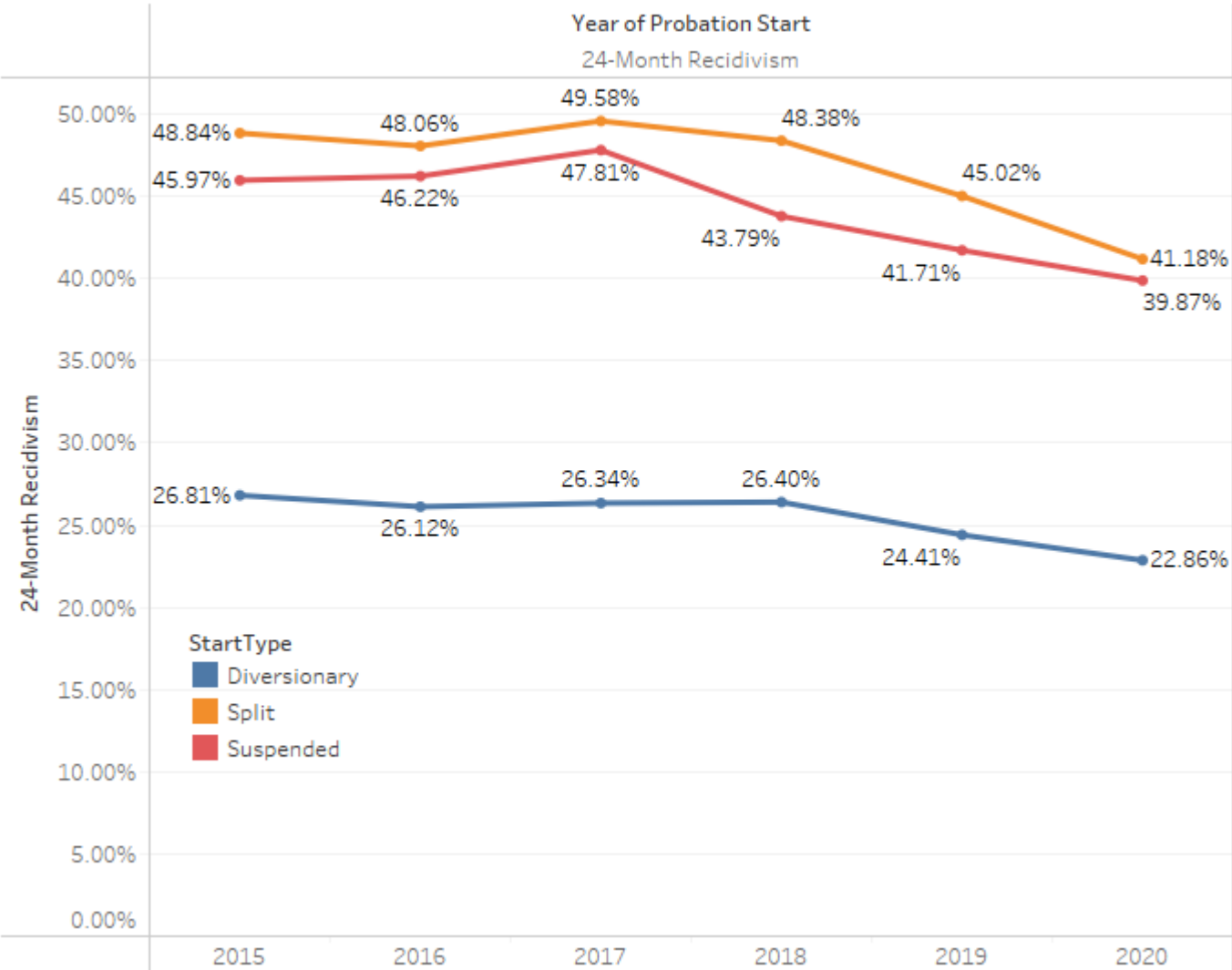
MostSeriou..	FULL_NAME	OFFENSE_TY..	Year of Probation Start					
			2015	2016	2017	2018	2019	2020
14-215	ILL OPN MV UNDER SUSPENSION	Misdemeanor	1,710	1,014	976	873	651	253
53a-125b	LARCENY 6TH DEG	Misdemeanor	1,062	617	512	448	381	149
53a-61	ASSAULT 3RD DEG	Misdemeanor	814	522	459	388	393	199
53a-181	BREACH OF PEACE 2ND DEG	Misdemeanor	753	422	330	310	318	114
21a-279(a)(..	POS CON SUBST OR>1/2 OZ CANBIS	Misdemeanor	595	426	388	336	272	80
53a-182	DISORDERLY CONDUCT	Misdemeanor	613	373	323	267	274	150
53a-167a	INTERFERE WITH OFFCR/RESISTING	Misdemeanor	554	350	319	304	245	125
14-147(c)	IMPROPER USE-MARKER/LIC/RGSTR	Misdemeanor	481	303	365	298	292	134
14-227a	ILL OPN MV UNDER INFL ALC/DRUG	Misdemeanor	622	315	284	255	233	108
14-224(b)(3)	EVADE RESP-INJURY/PROP DAMAGE	Misdemeanor	406	242	227	241	201	72
53-21	RISK OF INJURY TO CHILD	Felony	434	238	213	203	181	88
14-215(a)	ILL OPN MV UNDER SUSPENSION	Misdemeanor	293	170	215	229	211	79
53a-223*	VIOLATION OF PROTECTIVE ORDER	Felony	249	180	175	179	156	92
53a-107	CRIMINAL TRESPASS 1ST DEG	Misdemeanor	260	173	170	159	130	40
53a-62	THREATENING 2ND DEG	Misdemeanor	218	138	150	153	115	72
53a-103	BURGLARY 3RD DEG	Felony	215	162	146	118	98	44
14-213b	ILL OPN MV WO MINIMUM INSURNCE	Violation	31	110	179	214	145	54
53a-124	LARCENY 3RD DEG	Felony	230	146	104	93	91	53
53a-117	CRIMINAL MISCHIEF 3RD DEG	Misdemeanor	170	148	100	110	121	45
14-215a	IL OPN MV UNDER 14-140 SUSPNSN	Misdemeanor	251	131	121	99	67	25
53a-167c	ASSLT PB SFTY/EMT/TRANST/HLTH	Felony	139	87	96	75	92	29
38a-371	FLR TO INSURE PRIVATE MTR VEH	Misdemeanor	142	88	87	61	76	22
7-148**	TOWN ORDINANCE<= \$250 (VIOLTN)	Violation	134	70	97	84	62	16
53a-116	CRIMINAL MISCHIEF 2ND DEG	Misdemeanor	104	58	83	80	67	39
53a-125a	LARCENY 5TH DEG	Misdemeanor	136	78	56	54	66	19

RECIDIVISM BY MOST COMMON OFFENSE

The data shows the 25 most common re-arrest charges for client recidivism

- The top ten offenses are misdemeanors
- Eighteen of the top twenty-five charges are misdemeanors

Probation Start Types



RECIDIVISM BY START TYPE

The data show a declining rate for all three start types over the six year period. Split Sentence clients showed the largest percentage decrease, followed closely by Suspended Sentence starts.

Suspended Sentence starts represent the largest number of clients, followed by Diversionary, and Split Sentence Start clients.

OPERATIONAL CONTEXT

Probation oversees pretrial programming such as Supervised Diversionary Program and Accelerated Pretrial Rehabilitation. The Probation Transition Program (PTP) specialized unit manages split sentence cases for those individuals that have a period of probation following a term of incarceration. Probation manages Suspension of Prosecution and Treatment for Alcohol or Drug Dependency (supervision units) and Suspension of Prosecution-Purchase, Sale, Delivery or Transfer of Pistol or Revolver (intake units).

Case level

Case Level Grouping	Year of Probation Start					
	2015	2016	2017	2018	2019	2020
UNITY	76.7%	81.0%	83.1%	83.1%	71.6%	65.7%
Youth	67.3%	65.7%	69.8%	67.6%	72.1%	65.3%
High	58.7%	58.5%	60.0%	57.4%	53.2%	50.4%
Domestic Violence	54.3%	55.3%	54.6%	54.7%	53.2%	48.1%
Mental Health	55.3%	53.4%	55.7%	53.3%	50.6%	51.7%
WOCM	56.4%	54.9%	51.3%	52.4%	49.7%	44.4%
Supervised Diversions	37.0%	39.0%	39.3%	38.1%	36.0%	38.5%
Medium	36.9%	36.0%	40.0%	35.5%	33.2%	31.5%
Sex Offender	28.9%	23.9%	26.0%	16.4%	22.5%	16.0%

RECIDIVISM BY CASELOAD

The data highlight the number and type of specialized case loads within adult probation.

There is a similar decline in recidivism for the majority of case levels across the six year period although the range of recidivism rates vary considerably by Case Level.

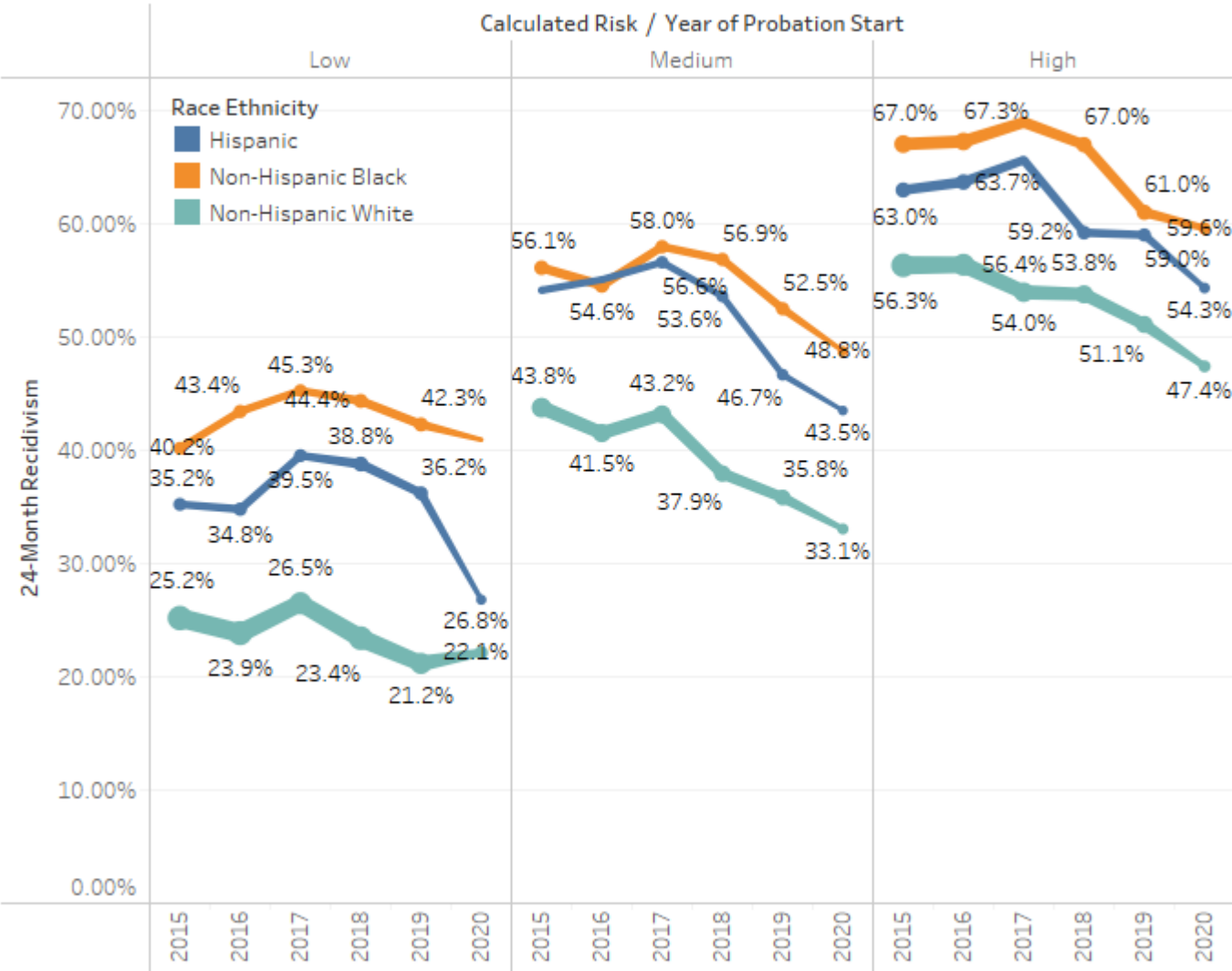
Although numerically small, the Unity and the Domestic Violence cases have the highest re-arrest rates while Sex Offender cases the lowest.

Numerically, non-specialized medium and high risk cases, are the largest.

OPERATIONAL CONTEXT

Probation Officers conduct an assessment of the client using the Level of Service Inventory Revised (LSI-R) and the Adult Substance Abuse Survey-Revised (ASUS-R) to identify the clients: Risk to Reoffend, Criminogenic Need Areas and Strengths. In addition to the LSI-R and the ASUS-R the Probation Officer may conduct a specialized assessment for domestic violence cases and high risk female clients. Based on the assessments the Probation Officer classifies the client by placing the client into a supervision level either High, Medium or Administrative. If a client presents a certain need area, the client is placed into a specialized supervision unit which has a reduced caseload and the officer has special training.

Risk and Ethnicity



RECIDIVISM BY RISK AND RACE

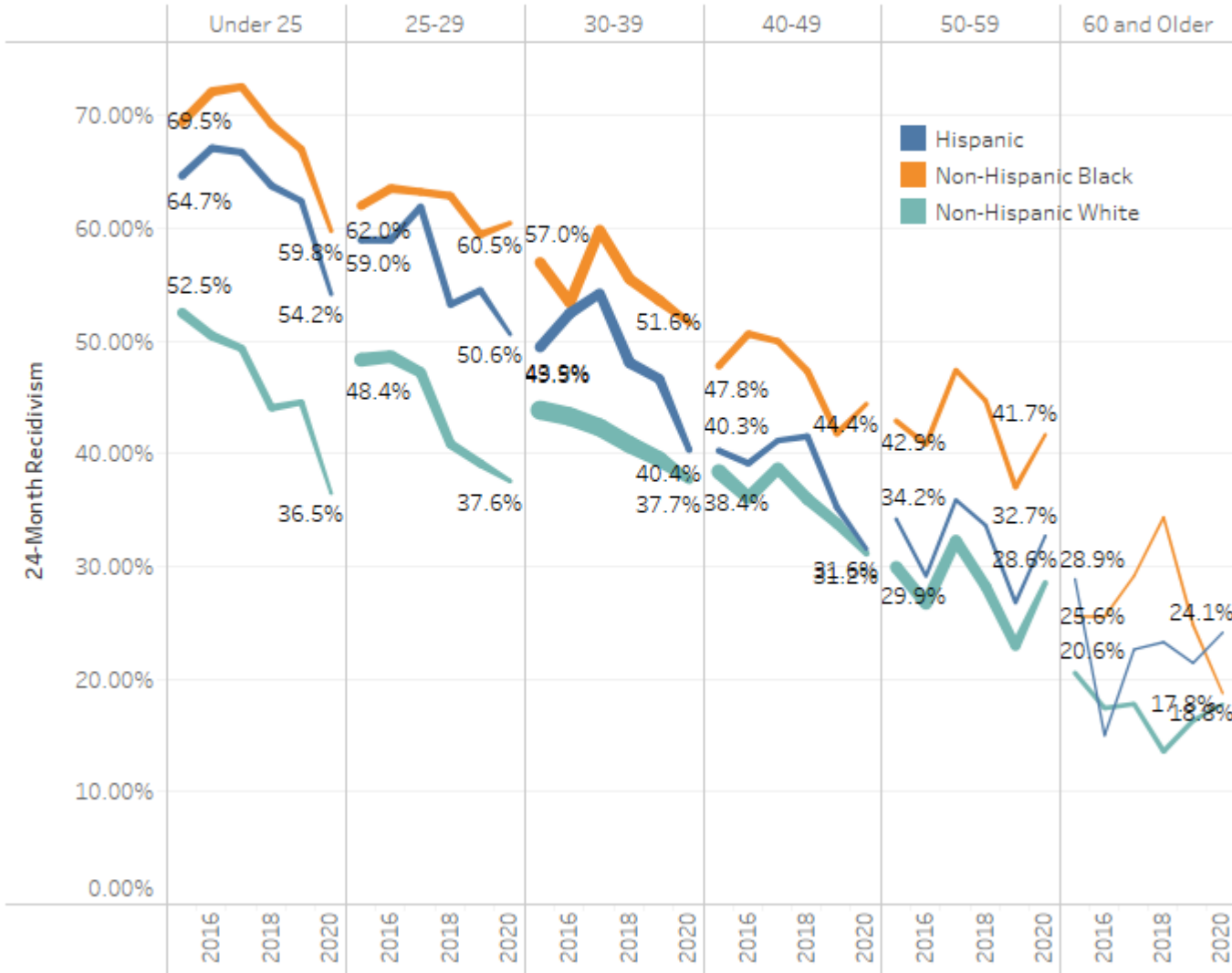
The data reveals race differences across risk levels.

- The differences are greatest for the low risk rates and smallest for high risk rates
- The recidivism rate for Black clients is almost double that of White clients at the low risk level
- In fact, recidivism rates for low risk Black clients are higher than those for medium risk White clients, and except for 2018 higher for medium risk Black clients than for high risk White clients
- Hispanic rates are closer to White rates for low risk cases while closer to Black rates for medium and high risk cases

OPERATIONAL CONTEXT

Probation Officers use the Level of Service Inventory Revised (LSI-R) and the Adult Substance Abuse Survey Revised (ASUS-R) to assess risk. The LSI-R is a 54-item instrument which assesses offenders across 10 domains: Criminal History, Education/Employment, Financial, Family/Marital, Accommodation, Leisure/Recreation, Companions, Alcohol/Drug Problem, Emotional/Personal and Attitudes/Orientation. The ASUS-R is a 96 item psychometric-based, adult self report survey comprised of 15 basic scales and three supplemental scales.

Age and Race



RECIDIVISM BY RACE AND AGE

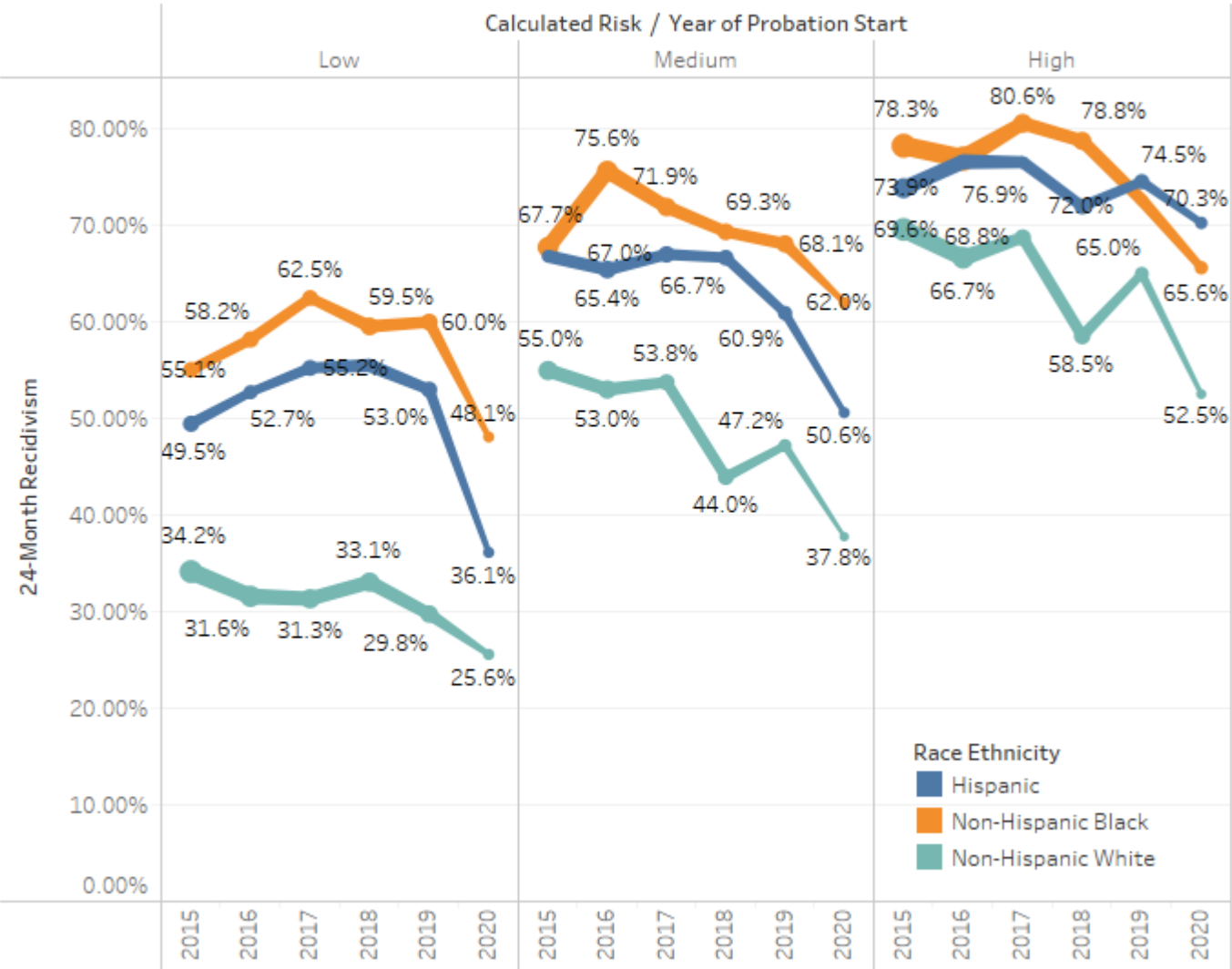
These data show the relationship between Race and Age

- Rates are highest for all races at younger ages
- Over the five year period, recidivism rates decline for each race category for ages up to 49 years-old while the two older age groups are relatively flat or show small increases
- Black clients have the highest recidivism rates across age groups while for the most part white clients have the lowest
- Hispanic rates are closer to Black rates for younger age groups while closer to White rates for older groups

OPERATIONAL CONTEXT

Probation reviews the impact probation supervision has on individuals to inform policy decisions.

Risk and Race, Under 25



RECIDIVISM BY RISK, RACE, AND AGE

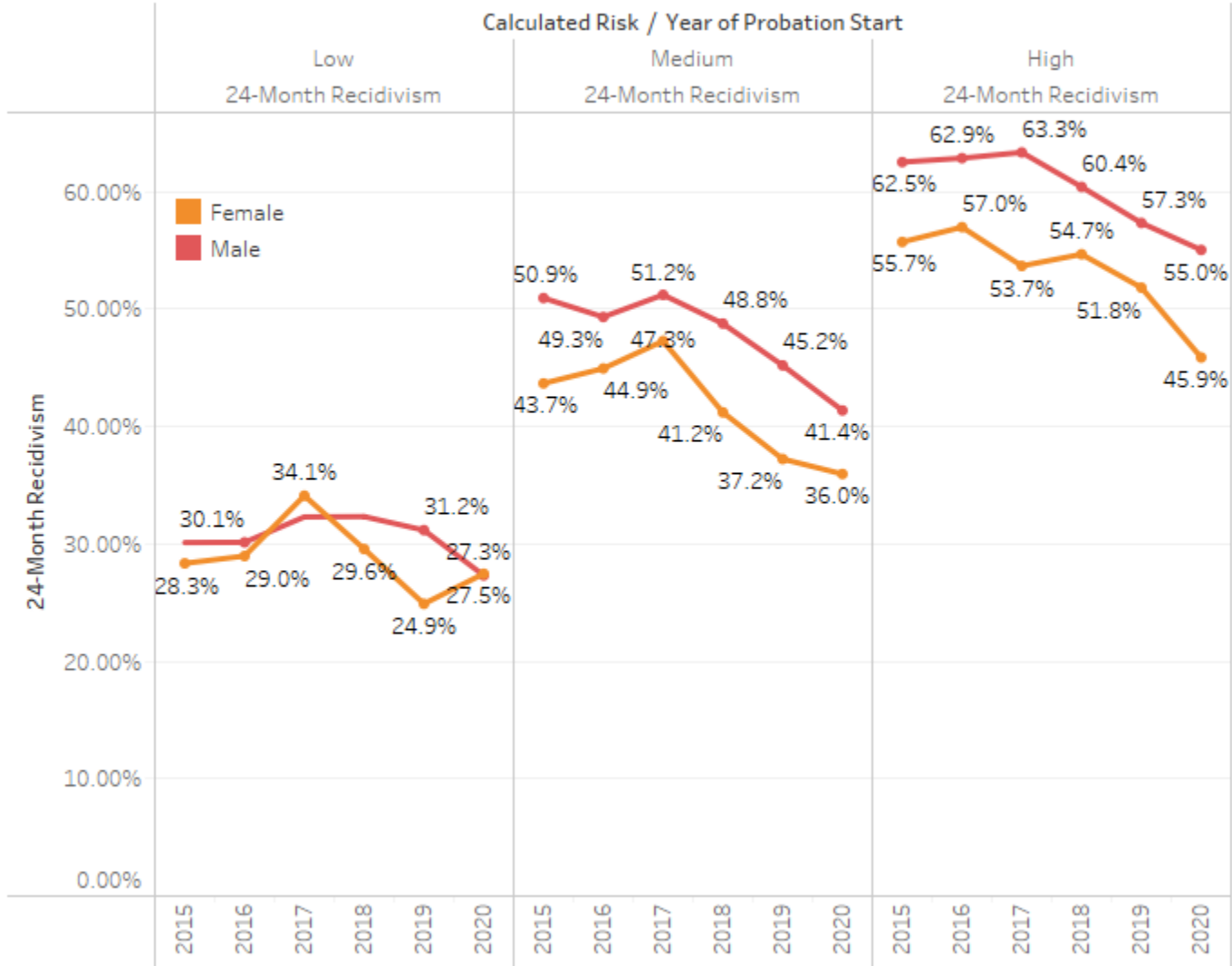
These data show the relationship between risk and race for the youngest adult probation clients

- Recidivism rates are highest for Black and Hispanic high risk clients
- Medium risk rates for White clients are comparable to low risk rates for Black and Hispanic clients
- Black clients in the medium risk group have higher re-arrest rates than high risk White clients
- Hispanic rates are closer to Black rates for younger age groups while closer to White rates for older groups

OPERATIONAL CONTEXT

Probation maintains specialized Youth Case Management Supervision Units, Utilizing New Initiatives with Today's Youth (UNITY), to provide gender/age appropriate services to male probationers, aged 18-24, with high risk and/or needs, through an integrated team approach with Alternative in the Community UNITY Case Managers.

Risk and Gender



RECIDIVISM BY RISK AND GENDER

These data show the relationship between risk and gender/sex for adult probation client

- Generally, female recidivism rates are lower than those of males
- Female rates fell for all risk levels with the largest decrease for high risk women while the smallest decrease was for low risk women
- Women make up a smaller proportion of cases across risk levels

OPERATIONAL CONTEXT

Probation utilizes the Collaborative Case Management For Women (CCMW) previously known as the Women Case Management (WOCM) which provides enhanced gender responsive services to high risk females through the application of a research based, female responsive case management model.