

MONTHLY INDICATORS REPORT

Summary of Connecticut Criminal Justice System Trends

Key Metrics

(Percent change from prior month)

January Monthly Totals

Criminal Arrests:
 7,743 ↑ (+9.3%)

Lock-up Arraignments:
 2,855 ↑ (+18.3%)

DOC Admissions:
 1,625 ↑ (+28.8%)

DOC Releases & Discharges:
 839 ↑ (+11.6%)

February 1 Counts

DOC Facility:
 11,137 ↑ (+2.5%)

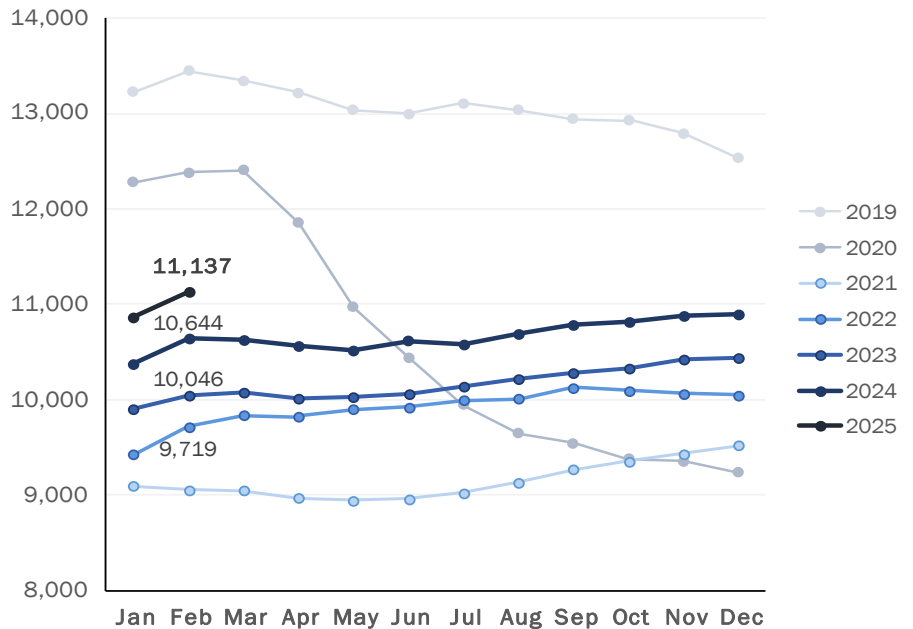
Pretrial:
 3,876 ↑ (+1.8%)

Sentenced:
 6,892 ↑ (+2.9%)

DOC Community Supervision:
 2,948 ↔ (-0.7%)

First-of-the-Month DOC Facility Population

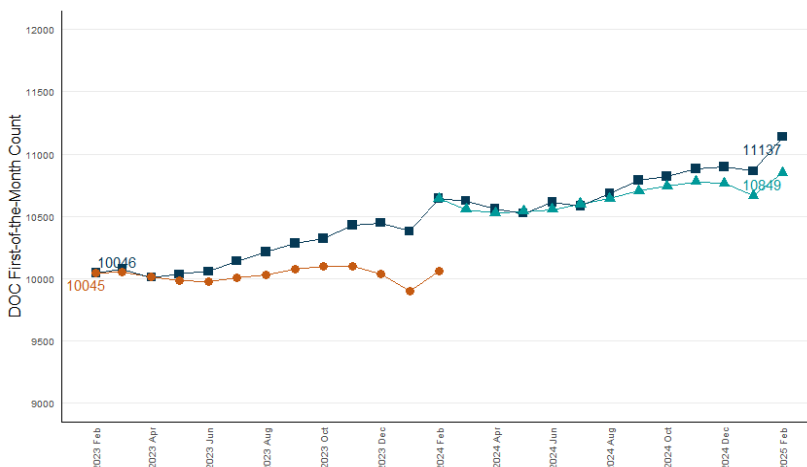
A comparison of up to five years shown by month



Note: To better illustrate changes, the Y-axis does not begin at zero.

Correction Population Forecast

Forecast period: March 2024 – February 2025



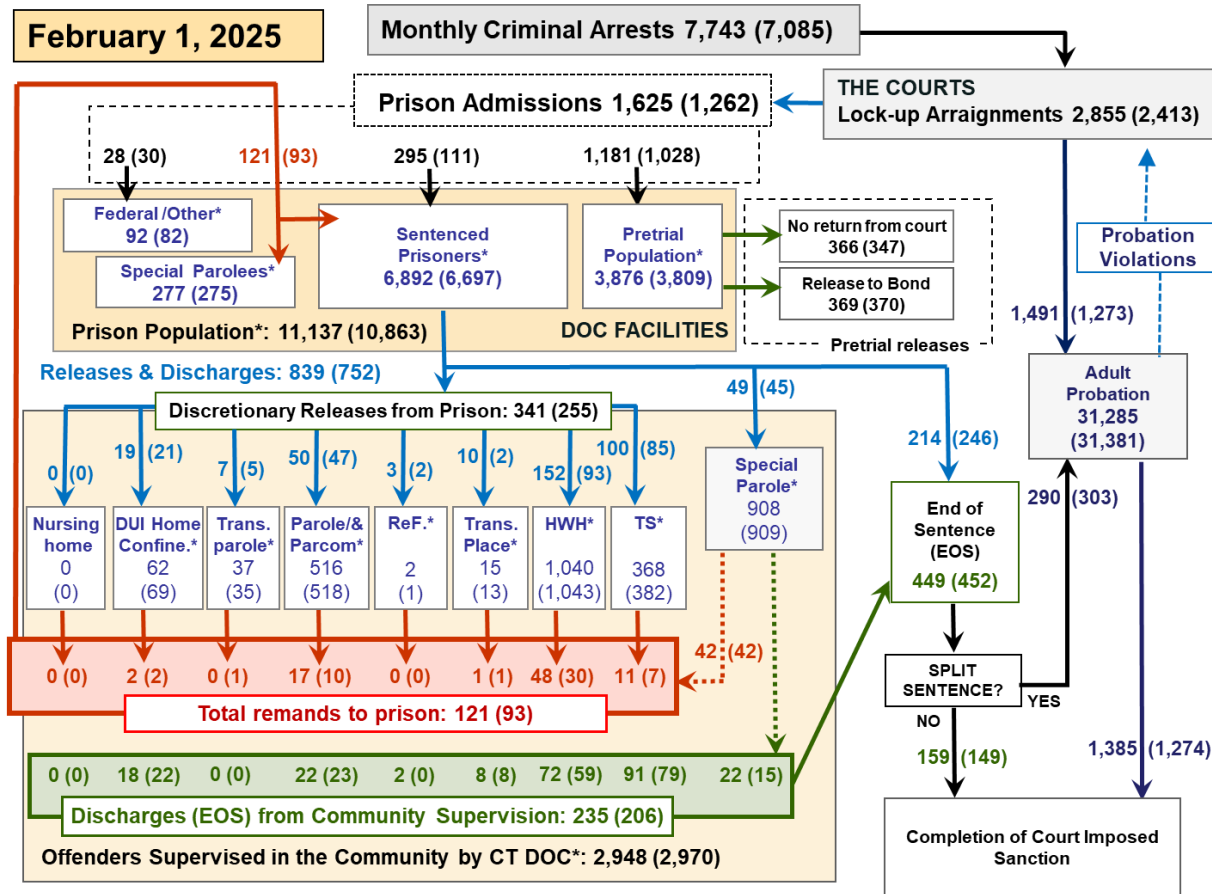
Note: To better illustrate changes, the Y-axis does not begin at zero.

WEEK OF FEBRUARY 1, 2025

- **OPM Population Estimate:**
10,849
- **DOC Facility Count:**
February 1 11,137
First Week Avg. 11,132
- **Difference from OPM Forecast:**
 - First of the Month +288 +2.7%
 - First Week Avg. +283 +2.6%

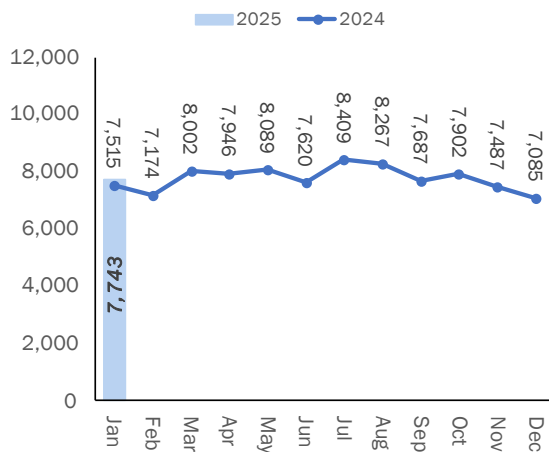


Criminal Justice System Monthly Counts & Flow Chart



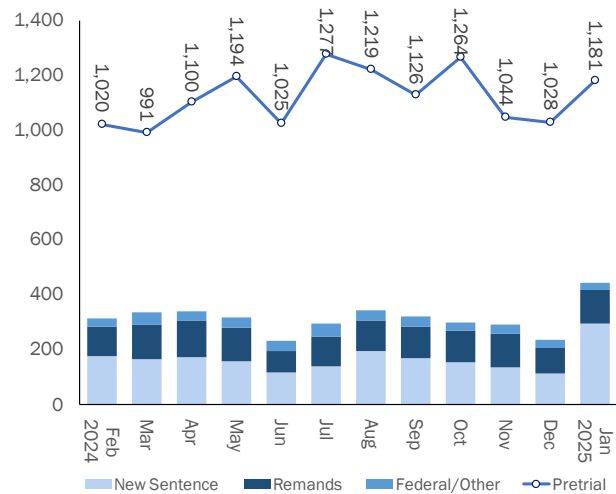
This flowchart contains monthly operations data for January 2024 and daily counts reported on February 1, 2025. Asterisks (*) indicate the daily count on February 1. Figures from last month are enclosed by parentheses.

Statewide Arrests: 2023 & 2024



Note: Data in the chart above show new case starts in the state Criminal Motor Vehicle System (CRMVS).

Monthly DOC Admissions: 2023 & 2024

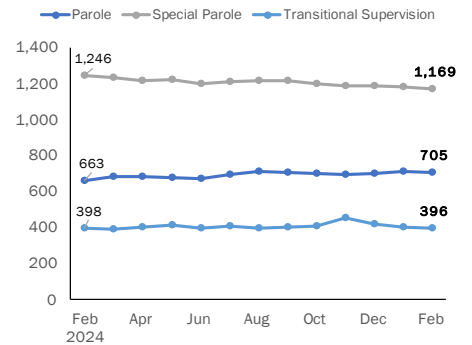


Department of Correction

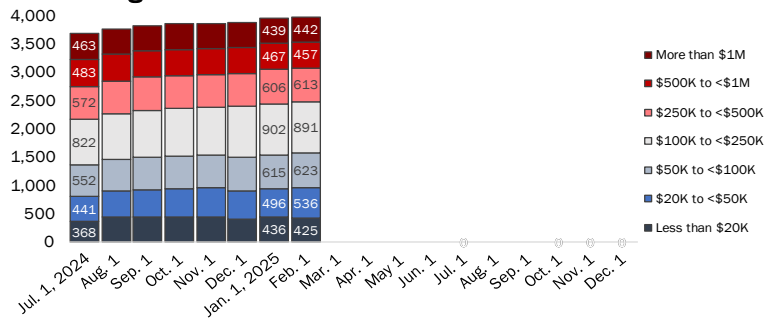
First-of-the-Month Totals

	2024 Dec. 1	2025 Jan. 1	2025 Feb. 1	2024 Feb. 1	% Change	
					Monthly	Annual
DOC Facilities						
Federal/Other	83	82	92	76	12.2%	21.1%
Sentenced	6,765	6,697	6,892	6,690	2.9%	3.0%
Special Parole	257	275	277	233	0.7%	18.9%
Pretrial	3,791	3,809	3,876	3,645	1.8%	6.3%
Total	10,896	10,863	11,137	10,644	2.5%	4.6%
DOC Community						
Transfer Parole	36	35	37	40	5.7%	-7.5%
Parole/ Parcom Total	510	518	516	497	-0.4%	3.8%
Parole	385	391	390	376	-0.3%	3.7%
Parcom @ CT	125	127	126	121	-0.8%	4.1%
Furlough	1	1	2	1	100.0%	100.0%
Trans Placement	20	13	15	21	15.4%	-28.6%
DUI/Home confine.	73	69	62	78	-10.1%	-20.5%
Halfway House Total	1,051	1,043	1,040	994	-0.3%	4.6%
Comm Release	567	556	556	521	0.0%	6.7%
Transitional Supervision	19	21	28	10	33.3%	180.0%
Parole	191	191	189	166	-1.0%	13.9%
Transfer Parole	4	4	6	7	50.0%	-14.3%
Special Parole	270	271	261	290	-3.7%	-10.0%
Transitional Supervision	398	382	368	388	-3.7%	-5.2%
Nursing home	0	0	0	0	-	-
Special Parole	921	909	908	956	-0.1%	-5.0%
Total	3,010	2,970	2,948	2,975	-0.7%	-0.9%

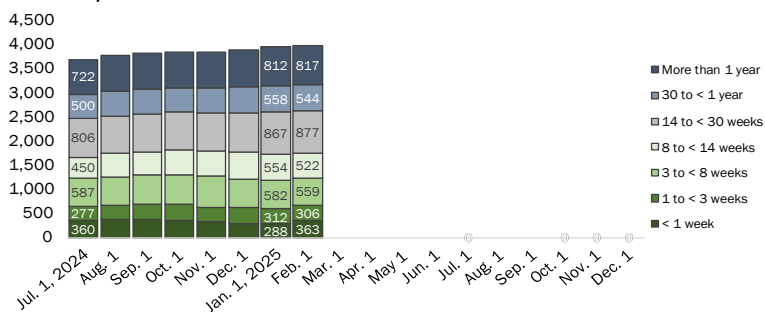
DOC Community Supervision: First-of-the-Month Totals



Bond Ranges for Pretrial Detainees



Pretrial, Weeks Held since Admission



Judicial Branch Court Support Services Division

The Jail Reinterview Program

	Pretrial admissions	Offender interviews	Offenders released	Released last year
NOV	1,044	837	264	231
DEC	1,028	926	235	231
JAN	1,181	931	227	247

Pretrial Bail and Probation Caseload

	Pretrial bail case starts	Client supv. starts	Split sentence starts	Pretrial bail cases*
NOV		1,246	288	
DEC		1,273	303	
JAN '25		1,491	290	
JAN '24	2,700	1,459	302	13,354

* Reflects open cases as of the first of the month.

Ed. Note: Pretrial bail case starts and cases unavailable at the time of publication and will be updated in the future.



Department of Correction

Monthly Totals

	2024	2024	2025	2024	% Change	
	NOV	DEC	JAN	JAN	Monthly	Annual
Admissions						
Federal/Other	35	30	28	29	-6.7%	-3.4%
Remands	121	93	121	124	30.1%	-2.4%
DUI	3	2	2	0	0.0%	-
Transfer Parole	1	1	0	1	-100.0%	-100.0%
Parole	13	10	17	20	70.0%	-15.0%
Trans Plac/Furlough	0	1	1	0	0.0%	-
Halfway House	41	30	48	55	60.0%	-12.7%
Transitional Supervision	23	7	11	10	57.1%	10.0%
Special Parole	40	42	42	38	0.0%	10.5%
New Sentence	136	111	295	259	165.8%	13.9%
Violation of Parole	42	32	67	67	109.4%	0.0%
Pretrial	1,044	1,028	1,181	1,259	14.9%	-6.2%
Total	1,336	1,262	1,625	1,671	28.8%	-2.8%
Releases and discharges						
Transfer Parole	6	5	7	7	40.0%	0.0%
Parole	45	47	50	50	6.4%	0.0%
Furlough	1	2	3	3	50.0%	0.0%
Trans. Placement	6	2	10	15	400.0%	-33.3%
Home Confinement DUI	21	21	19	24	-9.5%	-20.8%
Halfway House	117	93	152	123	63.4%	23.6%
Transitional Supervision	85	85	100	102	17.6%	-2.0%
Special Parole	53	45	49	59	8.9%	-16.9%
Nursing home	0	0	0	0	-	-
End of Sentence	429	452	449	437	-0.7%	2.7%
Total	763	752	839	820	11.6%	2.3%
Pretrial Releases*						
From Court	356	347	366	429	5.5%	-14.7%
Release to Bond	367	370	369	324	-0.3%	13.9%

* Totals reflect events, not individual offenders

Pretrial Admissions, New to DOC:

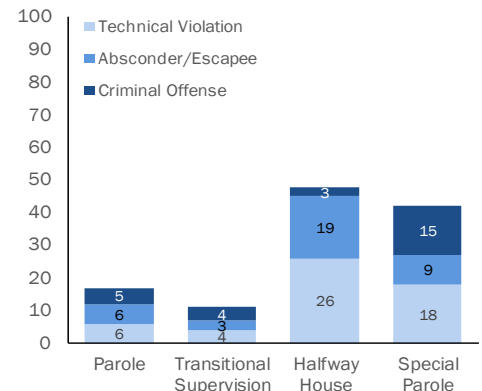
	NOV 2024	DEC 2024	JAN 2025	JAN 2024
Arraignments	2,423	2,413	2,855	2,864
Pretrial Admits	1,044	1,028	1,181	1,259
New to DOC	279	272	329	330
% New	27%	26%	28%	26%

DOC Community Release

Case Reviews and Release Metrics

	Cases reviewed	Approved	Denied	Continued	Approval rate
NOV	444	226	38	92	51%
DEC	468	225	42	106	48%
JAN '25	600	324	47	130	54%
JAN '24	550	281	46	110	51%

Remands from Community Release



Board of Pardons and Paroles

Parole Hearings

	Parole hearings	Paroles granted	Grant rate	Granted: prior year	Granted: two years prior
NOV	92	49	53%	56	48
DEC	75	52	69%	53	44
JAN	78	39	50%	48	44

Pardon Decisions

	Absolute Pardon			Cert. of Employability			Commutations		
	Granted	Denied	%	Granted	Denied	%	Granted	Denied	%
NOV	118	16	88%	3	0	100%	0	0	0%
DEC	106	8	93%	1	0	100%	1	4	20%
JAN '25	108	6	95%	6	0	100%	0	2	0%

Other BOPP Actions

	Reparole from revocation	Early Termination		Special parole discharges	Transfer parole approvals
		Discretionary parole	Special parole		
NOV	31	1	5	17	6
DEC	23	1	5	11	6
JAN '25	45	1	8	12	4
JAN '24	40	2	7	17	2

Monthly data sources: CRMVS via CJIS (arrests), JB CSSD (court and probation figures), BOPP and the DOC.

This report produced by the [Criminal Justice Policy & Planning Division Research Unit](#) at:

The Connecticut Office of Policy and Management
450 Capitol Avenue, Hartford CT, 06106

