

MONTHLY INDICATORS REPORT

Summary of Connecticut Criminal Justice System Trends

Key Metrics

(Percent change from prior month)

March Monthly Totals

Criminal Arrests:
 8,375 ↑ (+18.6%)

Lock-up Arraignments:
 2,762 ↑ (+16.9%)

DOC Admissions:
 1,462 ↑ (+15.0%)

**DOC Sentenced
 Releases & Discharges:**
 785 ↑ (+1.9%)

April 1 Counts

DOC Facility:
 11,112 ↔ (+0.3%)

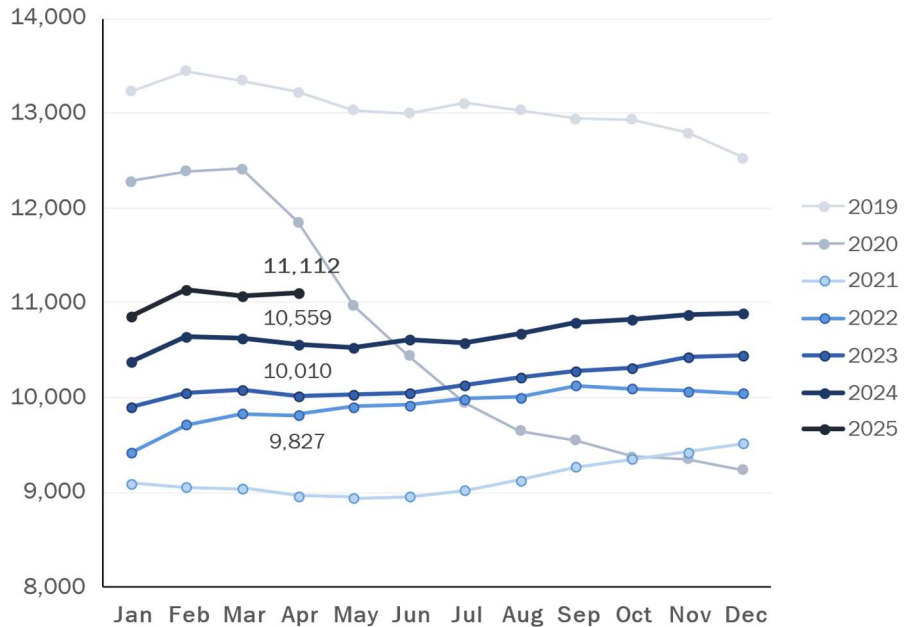
Pretrial:
 3,735 ↓ (-1.5%)

Sentenced:
 7,021 ↑ (+1.5%)

DOC Community Supervision:
 2,950 ↔ (-0.7%)

First-of-the-Month DOC Facility Population

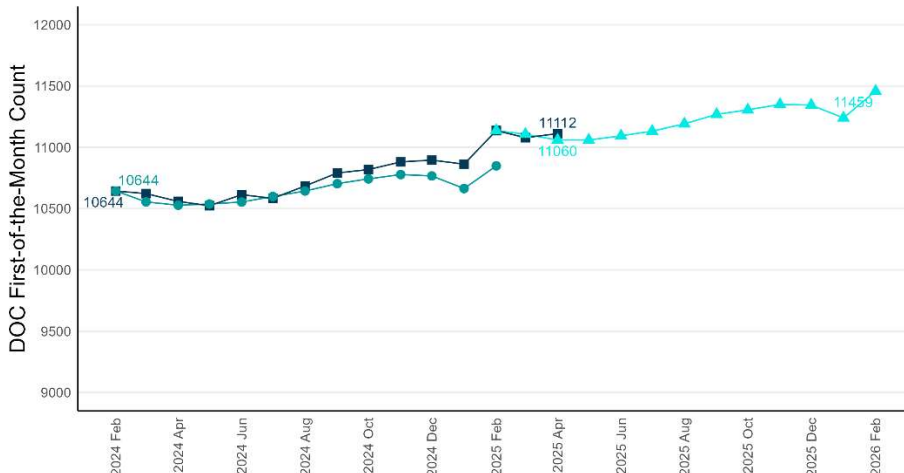
A comparison of five or more years shown by month



Note: To better illustrate changes, the Y-axis does not begin at zero.

Correction Population Forecast

Forecast period: March 2025 - February 2026



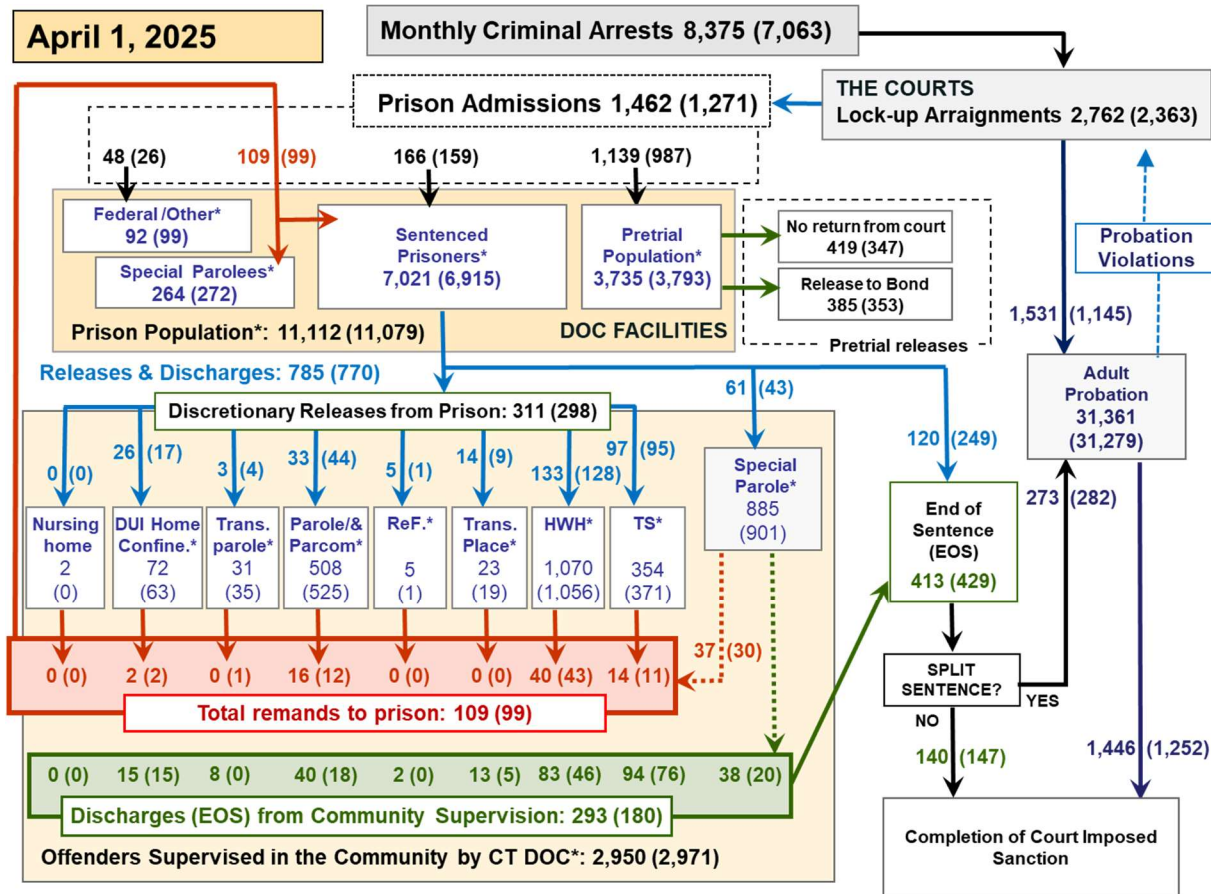
Note: To better illustrate changes, the Y-axis does not begin at zero.

WEEK OF APRIL 1, 2025

- **OPM Population Estimate:**
11,060
- **DOC Facility Count:**
April 1 11,112
First Week Avg. 11,119
- **Difference from OPM Forecast:**
 - First of the Month +52 +0.5%
 - First Week Avg. +59 +0.5%

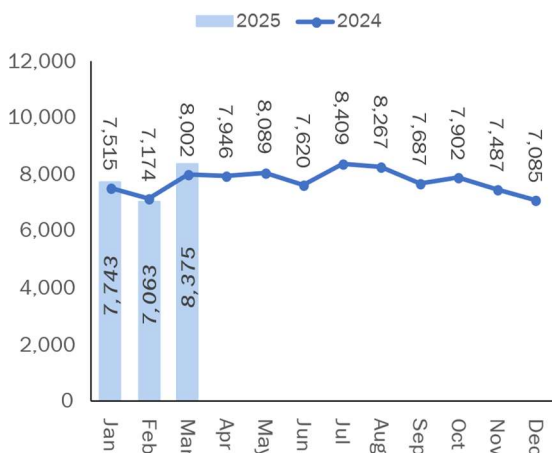


Criminal Justice System Monthly Counts & Flow Chart



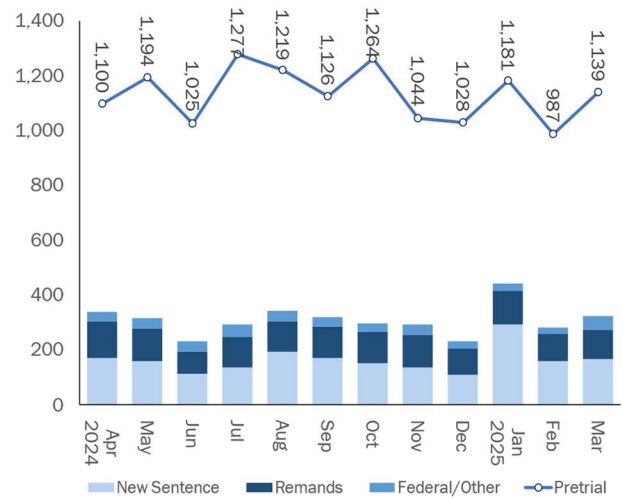
This flowchart contains monthly operations data for March 2024 and daily counts reported on April 1, 2025. Asterisks (*) indicate the daily count on April 1. Figures from last month are enclosed by parentheses.

Statewide Arrests: 2024 & 2025



Note: Data in the chart above show new case starts in the state Criminal Motor Vehicle System (CRMVS).

Monthly DOC Admissions: 2024 & 2025

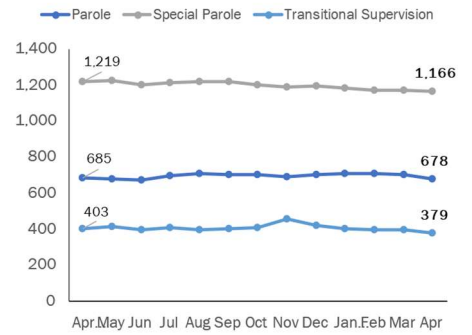


Department of Correction

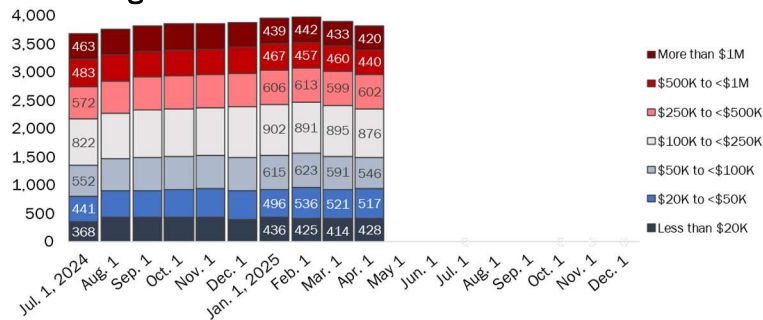
First-of-the-Month Totals

	2025 Feb. 1	2025 Mar. 1	2025 Apr. 1	2024 Apr. 1	% Change	
					Monthly	Annual
DOC Facilities						
Federal/Other	92	99	92	90	-7.1%	2.2%
Sentenced	6,892	6,915	7,021	6,719	1.5%	4.5%
Special Parole	277	272	264	250	-2.9%	5.6%
Pretrial	3,876	3,793	3,735	3,500	-1.5%	6.7%
Total	11,137	11,079	11,112	10,559	0.3%	5.2%
DOC Community						
Transfer Parole	37	35	31	35	-11.4%	-11.4%
Parole/ Parcom Total	516	525	508	510	-3.2%	-0.4%
Parole	390	404	391	385	-3.2%	1.6%
Parcom @ CT	126	121	117	125	-3.3%	-6.4%
Furlough	2	1	5	3	400.0%	66.7%
Trans Placement	15	19	23	25	21.1%	-8.0%
DUI/Home confine.	62	63	72	78	14.3%	-7.7%
Halfway House Total	1,040	1,056	1,070	984	1.3%	8.7%
Comm Release	556	576	587	504	1.9%	16.5%
Transitional Supervision	28	25	25	13	0.0%	92.3%
Parole	189	179	170	175	-5.0%	-2.9%
Transfer Parole	6	8	7	6	-12.5%	16.7%
Special Parole	261	268	281	286	4.9%	-1.7%
Transitional Supervision	368	371	354	390	-4.6%	-9.2%
Nursing home	0	0	2	0	-	-
Special Parole	908	901	885	933	-1.8%	-5.1%
Total	2,948	2,971	2,950	2,958	-0.7%	-0.3%

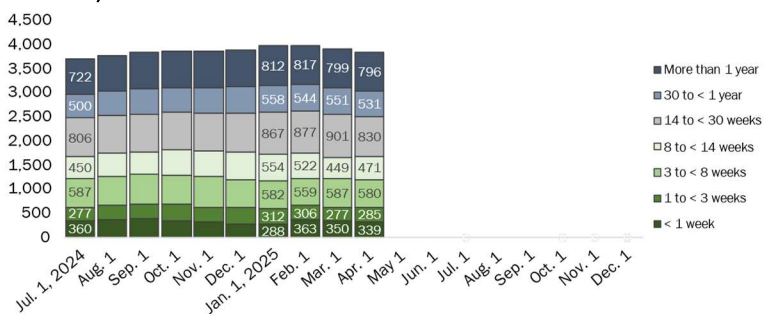
DOC Community Supervision: First-of-the-Month Totals



Bond Ranges for Pretrial Detainees



Pretrial, Weeks Held since Admission



Judicial Branch Court Support Services Division

The Jail Reinterview Program

	Pretrial admissions	Offender interviews	Offenders released	Released last year
JAN	1,181	931	227	247
FEB	987	839	221	251
MAR	1,139	876	246	228

Pretrial Bail and Probation Caseload

	Pretrial bail case starts	Client supv. starts	Split sentence starts	Pretrial bail cases*
JAN		1,491	290	
FEB		1,145	282	
MAR '25		1,531	273	
MAR '24	2,447	1,361	296	13,384

* Reflects open cases as of the first of the month.

Ed. Note: Pretrial bail case starts and cases unavailable at the time of publication and will be updated in the future.



Department of Correction

Monthly Totals

	2025	2025	2025	2024	% Change	
	JAN	FEB	MAR	MAR	Monthly	Annual
Admissions						
Federal/Other	28	26	48	47	84.6%	2.1%
Remands	121	99	109	123	10.1%	-11.4%
DUI	2	2	2	1	0.0%	100.0%
Transfer Parole	0	1	0	0	-100.0%	-
Parole	17	12	16	14	33.3%	14.3%
Trans Plac/Furlough	1	0	0	1	-	-100.0%
Halfway House	48	43	40	43	-7.0%	-7.0%
Transitional Supervision	11	11	14	9	27.3%	55.6%
Special Parole	42	30	37	55	23.3%	-32.7%
New Sentence	295	159	166	166	4.4%	0.0%
Violation of Parole	67	39	37	47	-5.1%	-21.3%
Pretrial	1,181	987	1,139	991	15.4%	14.9%
Total	1,625	1,271	1,462	1,327	15.0%	10.2%
Releases and discharges						
Transfer Parole	7	4	3	7	-25.0%	-57.1%
Parole	50	44	33	50	-25.0%	-34.0%
Furlough	3	1	5	4	400.0%	25.0%
Trans. Placement	10	9	14	8	55.6%	75.0%
Home Confinement DUI	19	17	26	25	52.9%	4.0%
Halfway House	152	128	133	142	3.9%	-6.3%
Transitional Supervision	100	95	97	105	2.1%	-7.6%
Special Parole	49	43	61	57	41.9%	7.0%
Nursing home	0	0	0	0	-	-
End of Sentence	449	429	413	450	-3.7%	-8.2%
Total	839	770	785	848	1.9%	-7.4%
Pretrial Releases*						
From Court	366	347	419	397	20.7%	5.5%
Release to Bond	369	353	385	341	9.1%	12.9%

* Totals reflect events, not individual offenders

Pretrial Admissions, New to DOC:

	JAN 2025	FEB 2025	MAR 2025	MAR 2024
Arraignments	2,855	2,363	2,762	2,368
Pretrial Admits	1,181	987	1,139	991
New to DOC	329	291	334	263
% New	28%	29%	29%	27%

DOC Community Release

Case Reviews and Release Metrics

	Cases reviewed	Approved	Denied	Continued	Approval rate
JAN	600	324	47	130	54%
FEB	523	249	57	118	48%
MAR '25	624	318	49	135	51%
MAR '24	478	244	28	107	51%

Remands from Community Release



Board of Pardons and Paroles

Parole Hearings

	Parole hearings	Paroles granted	Grant rate	Granted: prior year	Granted: two years prior
JAN	78	39	50%	48	44
FEB	92	36	39%	54	32
MAR	86	40	47%	43	35

Pardon Decisions

	Absolute Pardon			Cert. of Employability			Commutations		
	Granted	Denied	%	Granted	Denied	%	Granted	Denied	%
JAN	108	6	95%	6	0	100%	0	2	0%
FEB	93	24	79%	2	0	100%	0	1	0%
MAR '25	101	24	81%	1	0	100%	0	1	0%

Other BOPP Actions

	Reparole from revocation	Early Termination		Special parole discharges	Transfer parole approvals
		Discretionary parole	Special parole		
JAN	45	1	8	12	4
FEB	27	5	2	12	3
MAR '25	38	0	2	12	3
MAR '24	28	13	13	18	11

Monthly data sources: CRMVS via CJIS (arrests), JB CSSD (court and probation figures), BOPP and the DOC.

This report produced by the [Criminal Justice Policy & Planning Division Research Unit](#) at:

The Connecticut Office of Policy and Management
450 Capitol Avenue, Hartford CT, 06106

