

MONTHLY INDICATORS REPORT

Summary of Connecticut Criminal Justice System Trends

Key Metrics

(Percent change from prior month)

May Monthly Totals

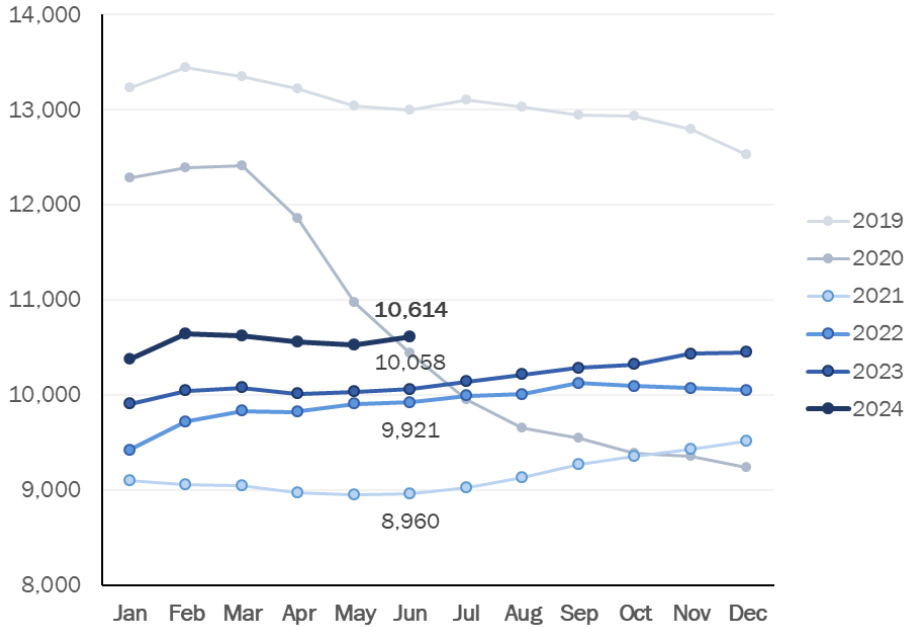
- Criminal Arrests:**
8,089 ↑ (+1.8%)
- Arraignments:**
2,865 ↑ (+6.4%)
- DOC Admissions:**
1,511 ↑ (+5.1%)
- DOC Releases & Discharges:**
809 ↓ (-9.7%)

June 1 Counts

- DOC Facility:**
10,614 ↔ (+0.9%)
- Pretrial:**
3,530 ↔ (+0.9%)
- Sentenced:**
6,729 ↔ (+0.7%)
- DOC Community Supervision:**
2,952 ↓ (+1.7%)

First-of-the-Month DOC Facility Population

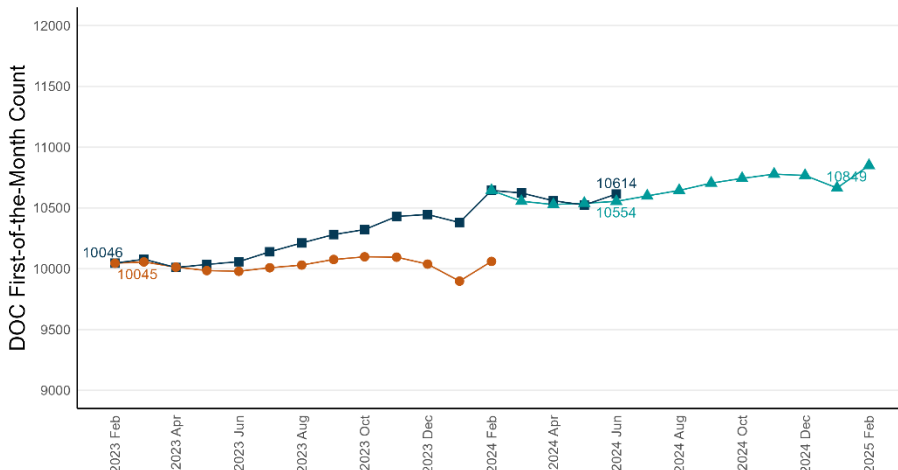
A comparison of up to five years shown by month



Note: To better illustrate changes, the Y-axis does not begin at zero.

Correction Population Forecast

Forecast period: March 2024 – February 2025



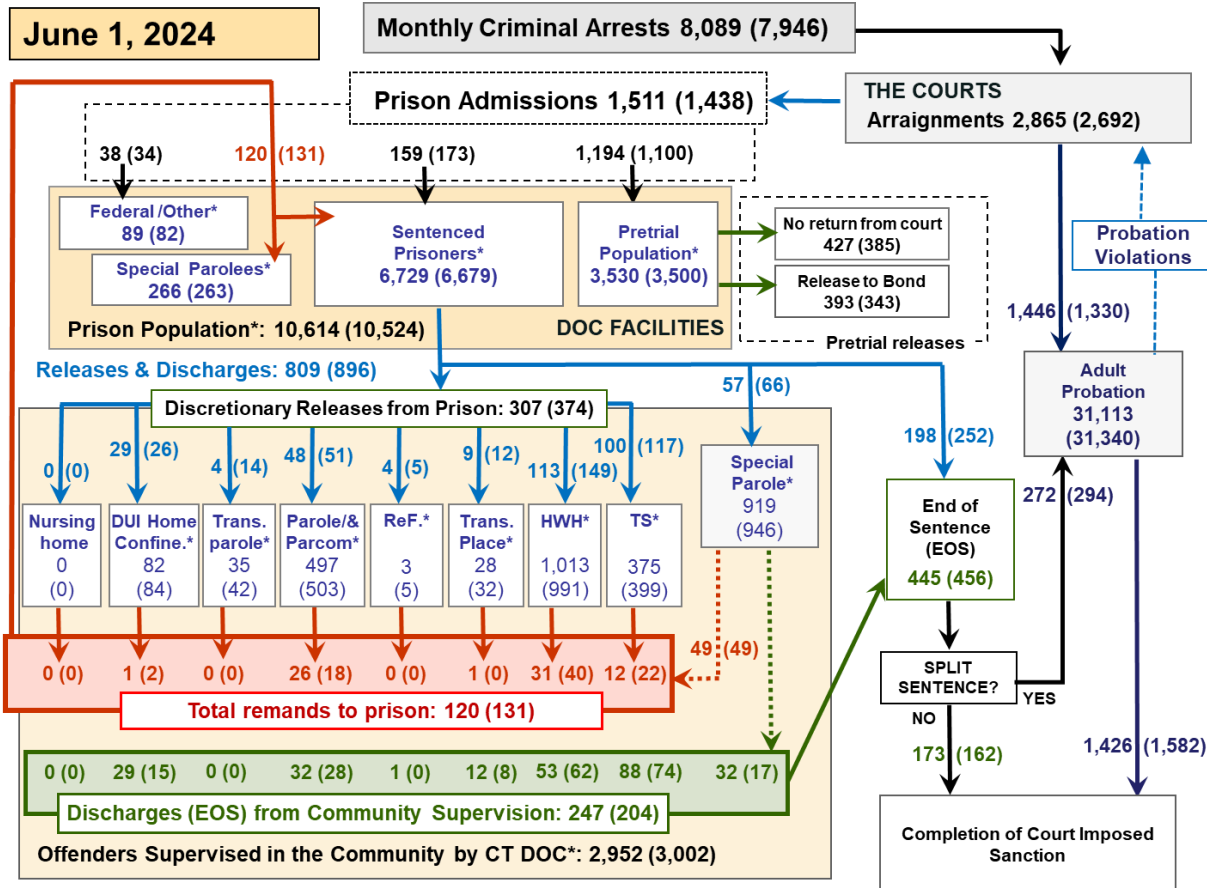
Note: To better illustrate changes, the Y-axis does not begin at zero.

WEEK OF JUNE 1, 2024

- **OPM Population Estimate:**
10,554
- **DOC Facility Count:**
June 1: 10,614
First Week Avg.: 10,600
- **Difference from OPM Forecast:**
 - First of the Month: +60 (+0.6%)
 - First Week Avg.: +46 (+0.4%)

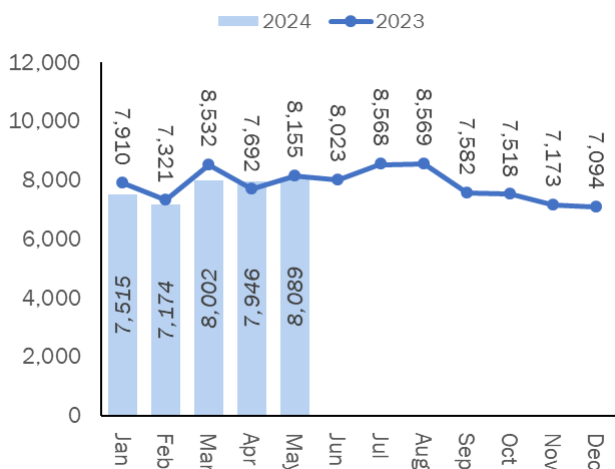


Criminal Justice System Monthly Counts & Flow Chart



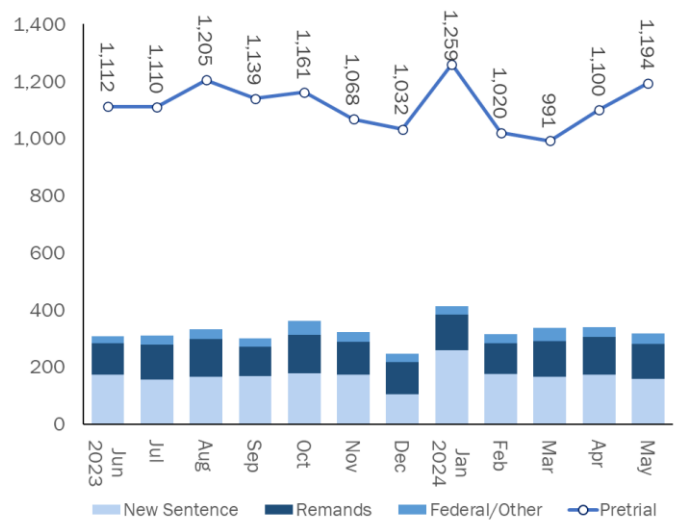
This flowchart contains monthly operations data for May 2024 and daily counts reported on June 1, 2024. Asterisks (*) indicate the daily count on June 1. Figures from last month are enclosed by parentheses.

Statewide Arrests: 2023 & 2024



Note: Data in the chart above show new case starts in the state Criminal Motor Vehicle System (CRMVS).

Monthly DOC Admissions: 2023 & 2024

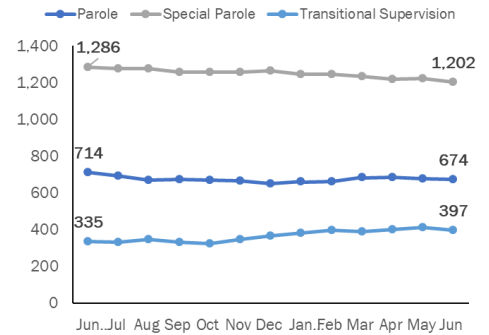


Department of Correction

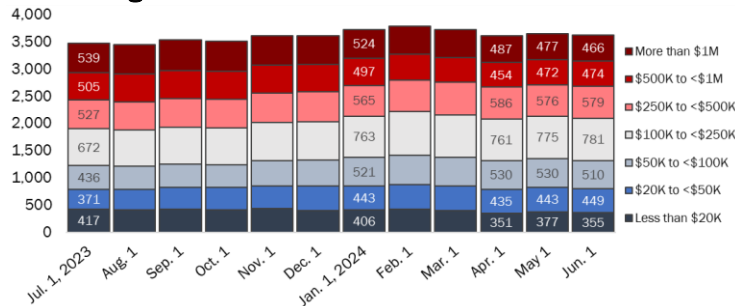
First-of-the-Month Totals

	2024 Apr. 1	2024 May 1	2024 Jun. 1	2023 Jun. 1	% Change	
					Monthly	Annual
DOC Facilities						
Federal/Other	90	82	89	98	8.5%	-9.2%
Sentenced	6,719	6,679	6,729	6,394	0.7%	5.2%
Special Parole	250	263	266	268	1.1%	-0.7%
Pretrial	3,500	3,500	3,530	3,298	0.9%	7.0%
Total	10,559	10,524	10,614	10,058	0.9%	5.5%
DOC Community						
Transfer Parole	35	42	35	37	-16.7%	-5.4%
Parole/ Parcom Total	510	503	497	557	-1.2%	-10.8%
Parole	385	374	372	420	-0.5%	-11.4%
Parcom @ CT	125	129	125	137	-3.1%	-8.8%
Furlough	3	5	3	3	-40.0%	0.0%
Trans Placement	25	32	28	40	-12.5%	-30.0%
DUI/Home confine.	78	84	82	90	-2.4%	-8.9%
Halfway House Total	984	991	1,013	1,007	2.2%	0.6%
Comm Release	504	516	524	521	1.6%	0.6%
Transitional Supervision	13	13	22	24	69.2%	-8.3%
Parole	175	175	177	157	1.1%	12.7%
Transfer Parole	6	11	7	19	-36.4%	-63.2%
Special Parole	286	276	283	286	2.5%	-1.0%
Transitional Supervision	390	399	375	311	-6.0%	20.6%
Nursing home	0	0	0	0	-	-
Special Parole	933	946	919	1,000	-2.9%	-8.1%
Total	2,958	3,002	2,952	3,045	-1.7%	-3.1%

DOC Community Supervision: First-of-the-Month Totals



Bond Ranges for Pretrial Detainees

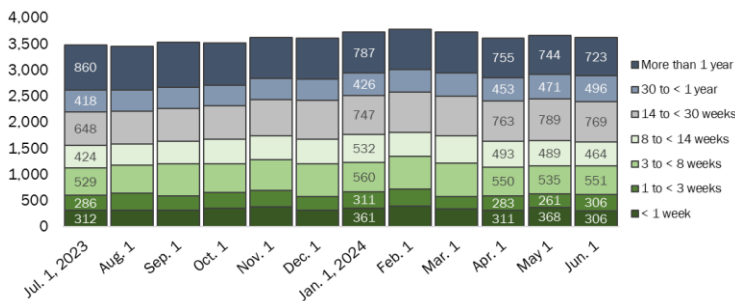


Judicial Branch Court Support Services Division

The Jail Reinterview Program

	Pretrial admissions	Offender interviews	Offenders released	Released last year
MAR	991	887	228	267
APR	1,100	1,044	241	187
MAY	1,194	1,047	297	244

Pretrial, Weeks Held since Admission



Pretrial Bail and Probation Caseload

	Pretrial bail case starts	Client supv. starts	Split sentence starts	Pretrial bail cases*
MAR	2,447	1,361	296	13,384
APR	2,605	1,330	294	13,449
MAY '24	2,730	1,446	272	13,463
MAY '23	2,602	1,421	311	13,123

* Reflects open cases as of the first of the month.



Department of Correction

Monthly Totals

	2024	2024	2024	2023	% Change	
	MAR	APR	MAY	MAY	Monthly	Annual
Admissions						
Federal/Other	47	34	38	49	11.8%	-22.4%
Remands	123	131	120	134	-8.4%	-10.4%
DUI	1	2	1	6	-50.0%	-83.3%
Transfer Parole	0	0	0	0	-	-
Parole	14	18	26	17	44.4%	52.9%
Trans Plac/Furlough	1	0	1	0	-	-
Halfway House	43	40	31	28	-22.5%	10.7%
Transitional Supervision	9	22	12	18	-45.5%	-33.3%
Special Parole	55	49	49	65	0.0%	-24.6%
New Sentence	166	173	159	177	-8.1%	-10.2%
Violation of Parole	47	49	41	48	-16.3%	-14.6%
Pretrial	991	1,100	1,194	1,093	8.5%	9.2%
Total	1,327	1,438	1,511	1,453	5.1%	4.0%
Releases and discharges						
Transfer Parole	7	14	4	12	-71.4%	-66.7%
Parole	50	51	48	48	-5.9%	0.0%
Furlough	4	5	4	3	-20.0%	33.3%
Trans. Placement	8	12	9	21	-25.0%	-57.1%
Home Confinement DUI	25	26	29	37	11.5%	-21.6%
Halfway House	142	149	113	121	-24.2%	-6.6%
Transitional Supervision	105	117	100	90	-14.5%	11.1%
Special Parole	57	66	57	58	-13.6%	-1.7%
Nursing home	0	0	0	0	-	-
End of Sentence	450	456	445	441	-2.4%	0.9%
Total	848	896	809	831	-9.7%	-2.6%
Pretrial Releases*						
From Court	397	385	427	405	10.9%	5.4%
Release to Bond	341	343	393	364	14.6%	8.0%

* Totals reflect events, not individual offenders

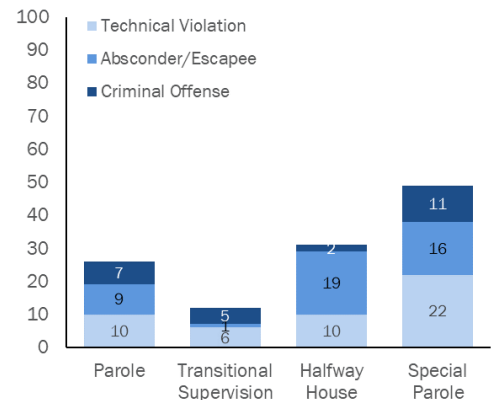
Pretrial Admissions, New to DOC:

	MAR 2024	APR 2024	MAY 2024	MAY 2023
Arraignments	2,368	2,692	2,865	2,780
Pretrial Admits	991	1,100	1,194	1,093
New to DOC	263	299	310	264
% New	27%	27%	26%	24%

DOC Community Release

Case Reviews and Release Metrics

	Cases reviewed	Approved	Denied	Continued	Approval rate
MAR	478	244	28	107	51%
APR	650	334	48	147	51%
MAY '24	480	244	45	105	51%
MAY '23	506	251	44	117	50%



Remands from Community Release

Board of Pardons and Paroles

Parole Hearings

	Parole hearings	Paroles granted	Grant rate	Granted: prior year	Granted: two years prior
MAR	86	43	50%	35	49
APR	104	49	47%	37	59
MAY	88	37	42%	38	33

Pardon Decisions

	Absolute Pardon			Cert. of Employability			Commutations		
	Granted	Denied	%	Granted	Denied	%	Granted	Denied	%
MAR	79	6	93%	5	0	100%	3	3	50%
APR	67	10	87%	2	0	100%	0	0	0%
MAY '24	103	35	75%	0	0	0%	0	0	0%

Other BOPP Actions

	Reparole from revocation	Early Termination		Special parole discharges	Transfer parole approvals
		Discretionary parole	Special parole		
MAR	28	13	13	18	11
APR	30	1	3	20	7
MAY '24	31	5	11	14	1
MAY '23	27	3	11	23	8

Monthly data sources: CRMVS via CJIS (arrests), JB CSSD (court and probation figures), BOPP and the DOC.

This report produced by the [Criminal Justice Policy & Planning Division Research Unit](#) at:

The Connecticut Office of Policy and Management
450 Capitol Avenue, Hartford CT, 06106

