



CRIMINAL JUSTICE POLICY & PLANNING DIVISION

JULY 21, 2022

2022 Correctional Population Update

Presented by:

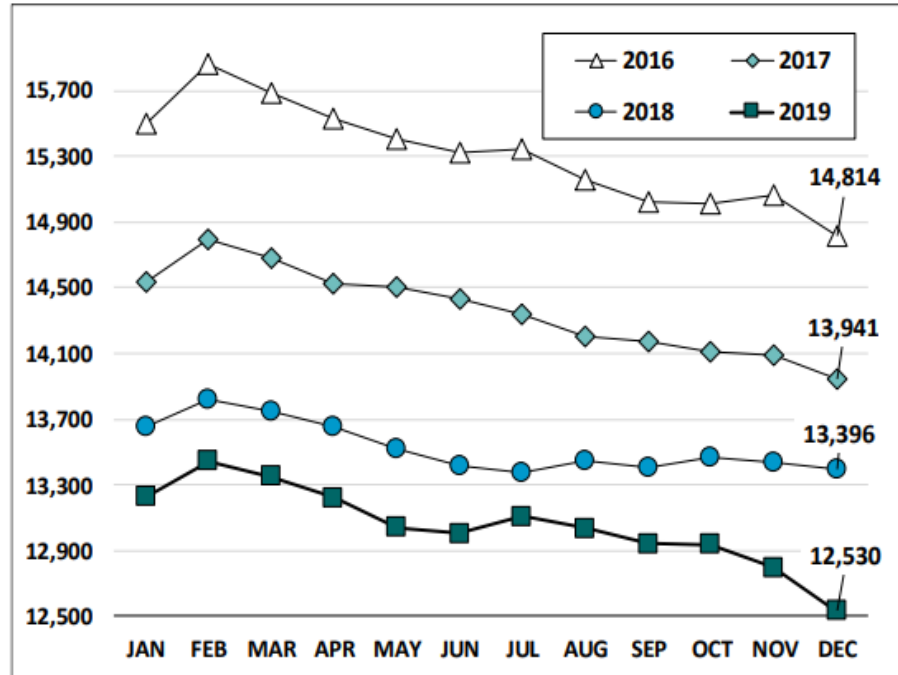
Marc Pelka, *Undersecretary*

Kevin Neary, *Research Unit Director*

Office of Policy and Management

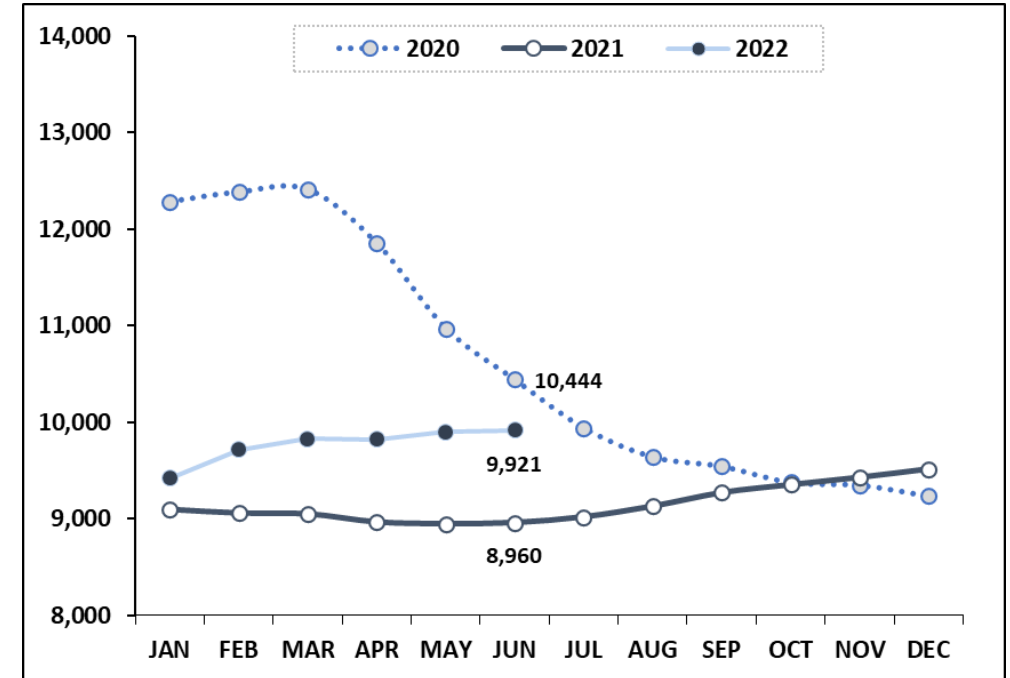
2022-23 CORRECTIONAL POPULATION UPDATE : FIRST OF THE MONTH POPULATIONS PRE- & POST-PANDEMIC

Chart 4 – Prison Population, First-of-Month
2016, 2017, 2018, and 2019



- First-of-the-month population trends pre-pandemic varied but had some commonalities.
 - Between 2016 and 2019, each year demonstrated a strong linear downward trend
 - Many years exhibited two seasonal peaks, one on February 1 and the second sometime between July and November

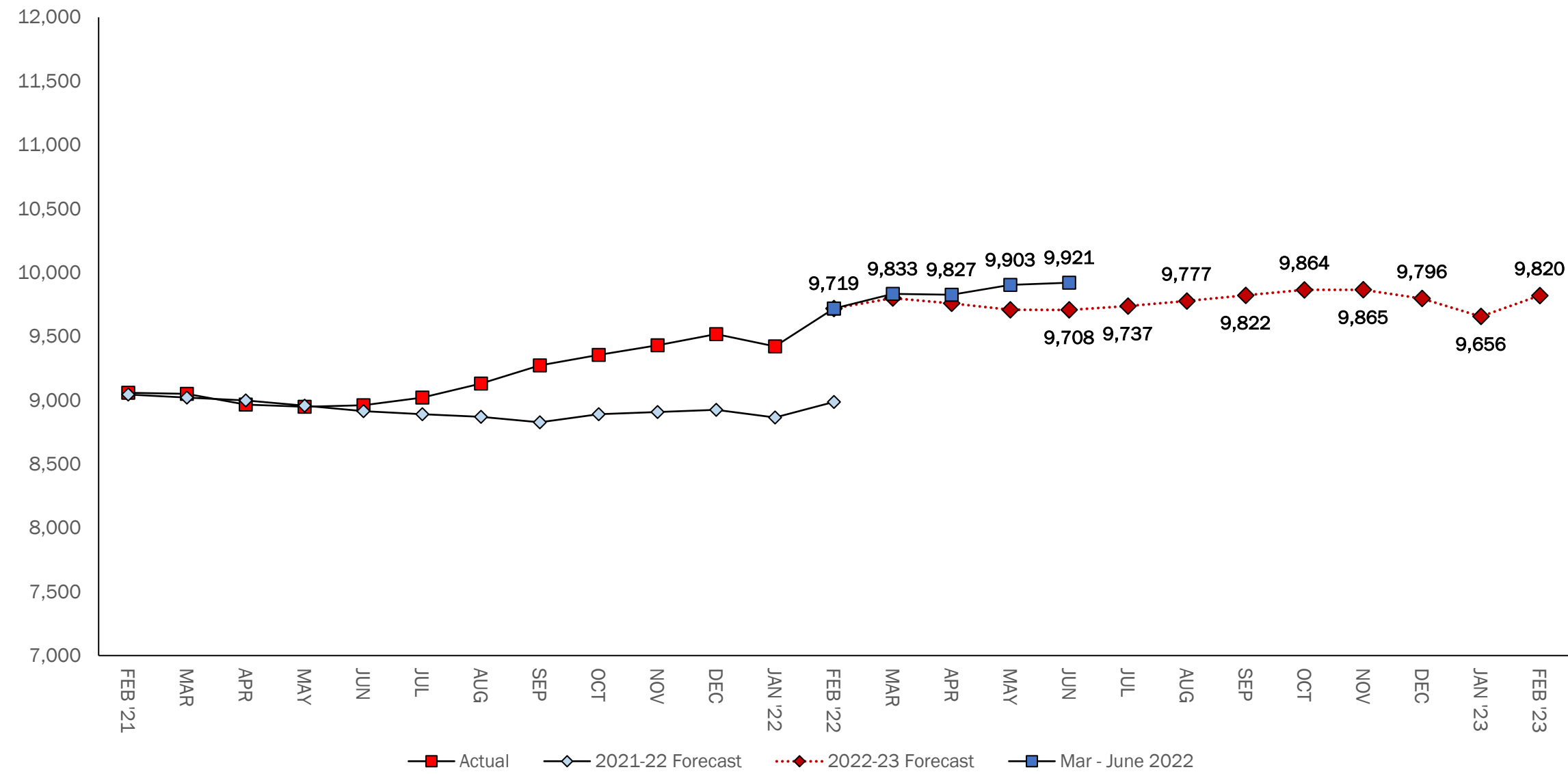
Chart 4 – Prison Population, First-of-Month
2020, 2021, and 2022



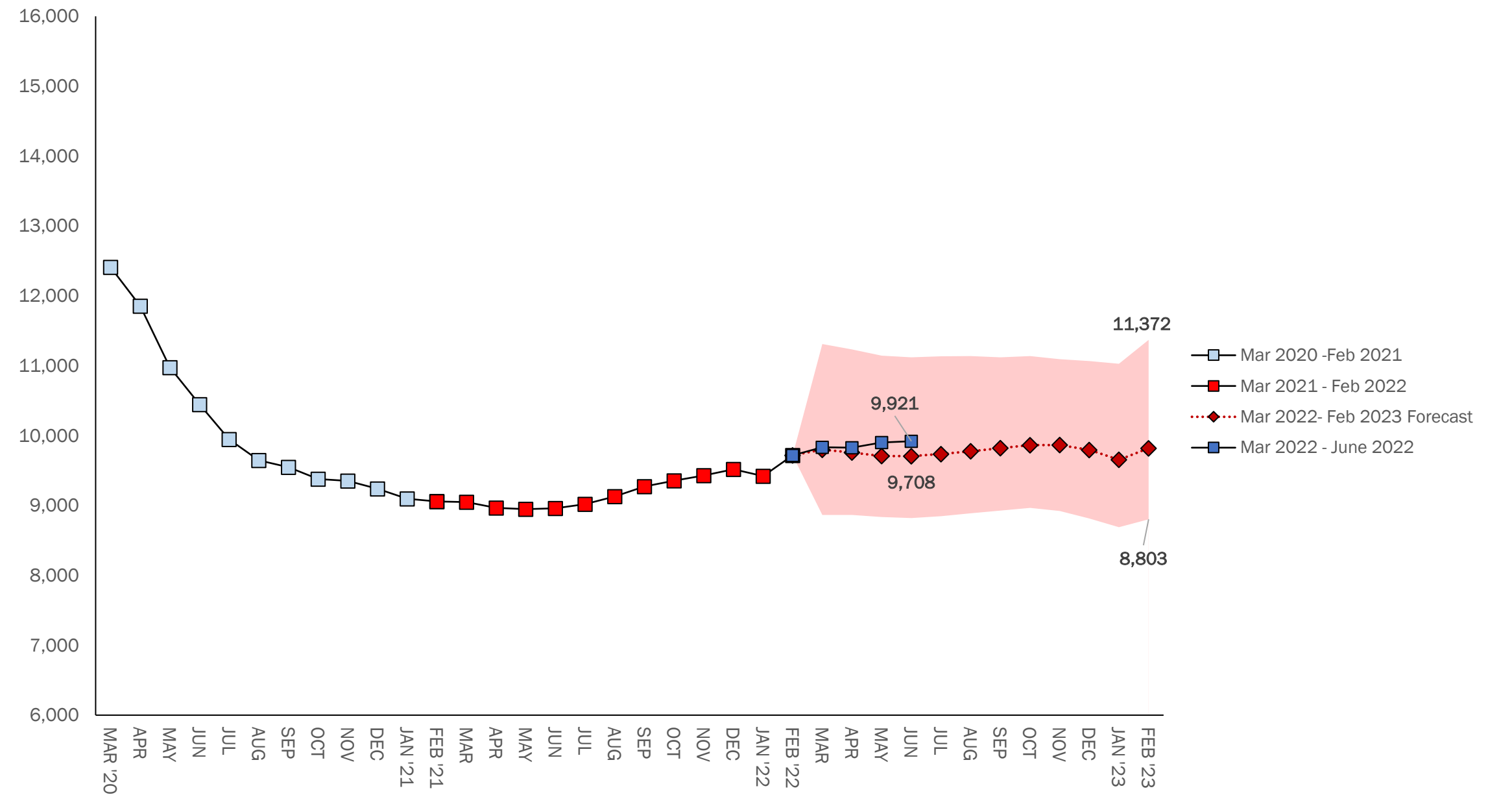
- First-of-the-month trends post-pandemic have been markedly distinct each year.
 - 2020's sharp decline with COVID's onset
 - 2021's modest V shape: a decline then latter year rise
 - 2022's rise and steady spring

2022-23 CORRECTIONAL POPULATION UPDATE :

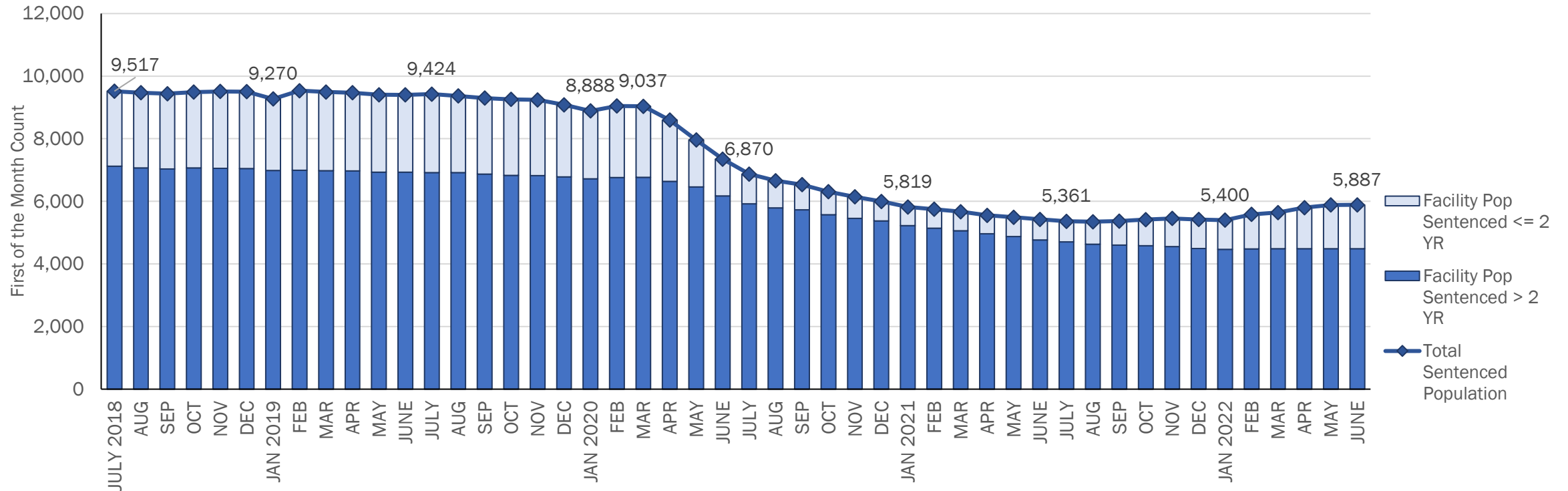
MID-YEAR UPDATE ON FORECAST



2022-23 CORRECTIONAL POPULATION UPDATE : COMPARING 2022 ACTUALS TO FORECAST ESTIMATE RANGE



JUNE SPOTLIGHT: SENTENCED POPULATION CHANGES



- The DOC sentenced population decreased notably following the pandemic's onset.
 - Much of the decrease stems from immediate reductions in the population with sentences two years or less after March 2020.
 - The population with sentences longer than two years also declined following the pandemic, .
- Much of the correctional population growth in 2022 has occurred in the pretrial population and the population sentenced two years or less.
 - The population with sentences longer than two years has yet to show signs of significant growth.
 - Changes to the population with sentences more than two years are significant, as they tend to indicate enduring DOC population impacts.