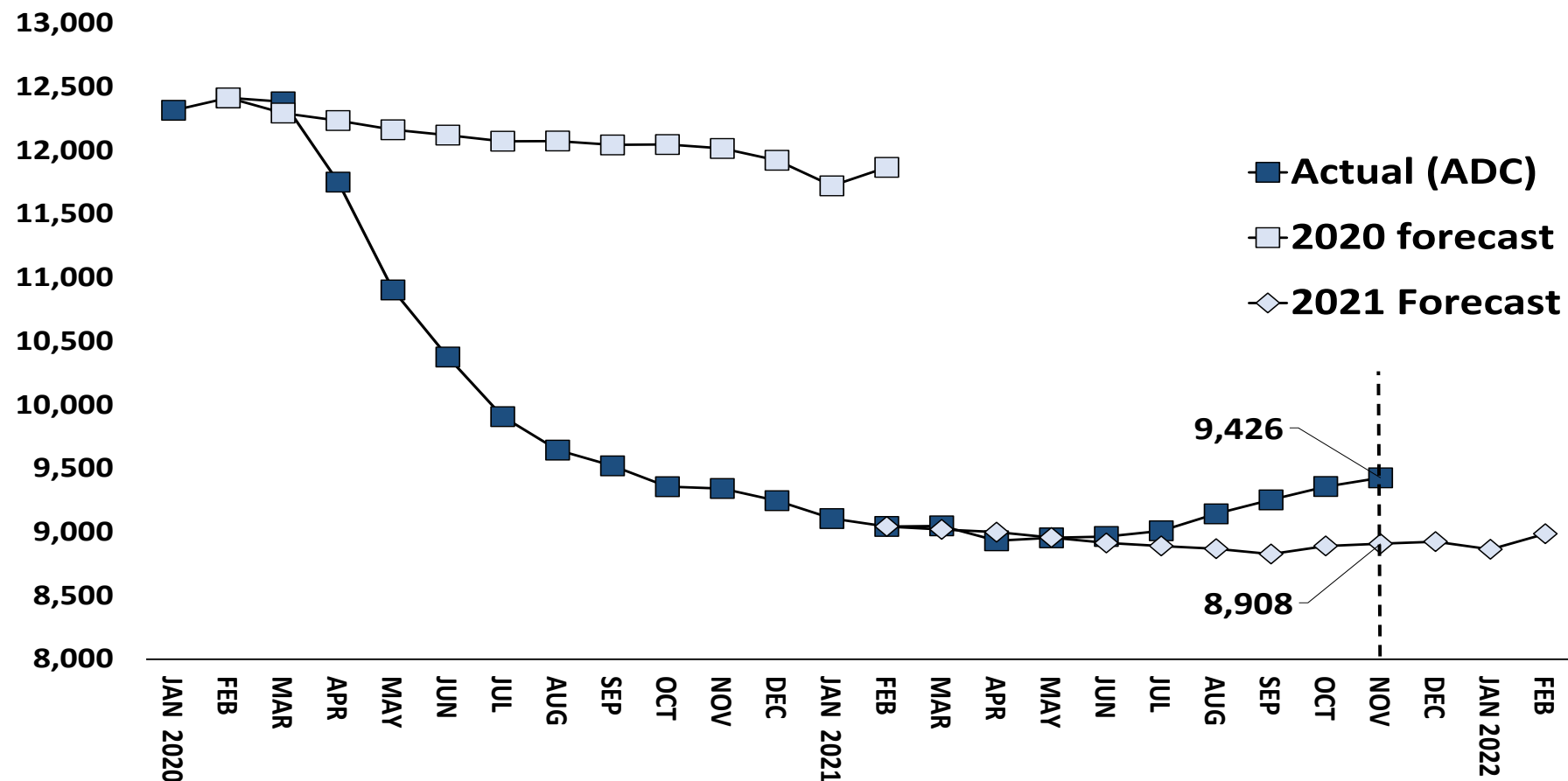


NOVEMBER CORRECTION POPULATION FORECAST UPDATE:

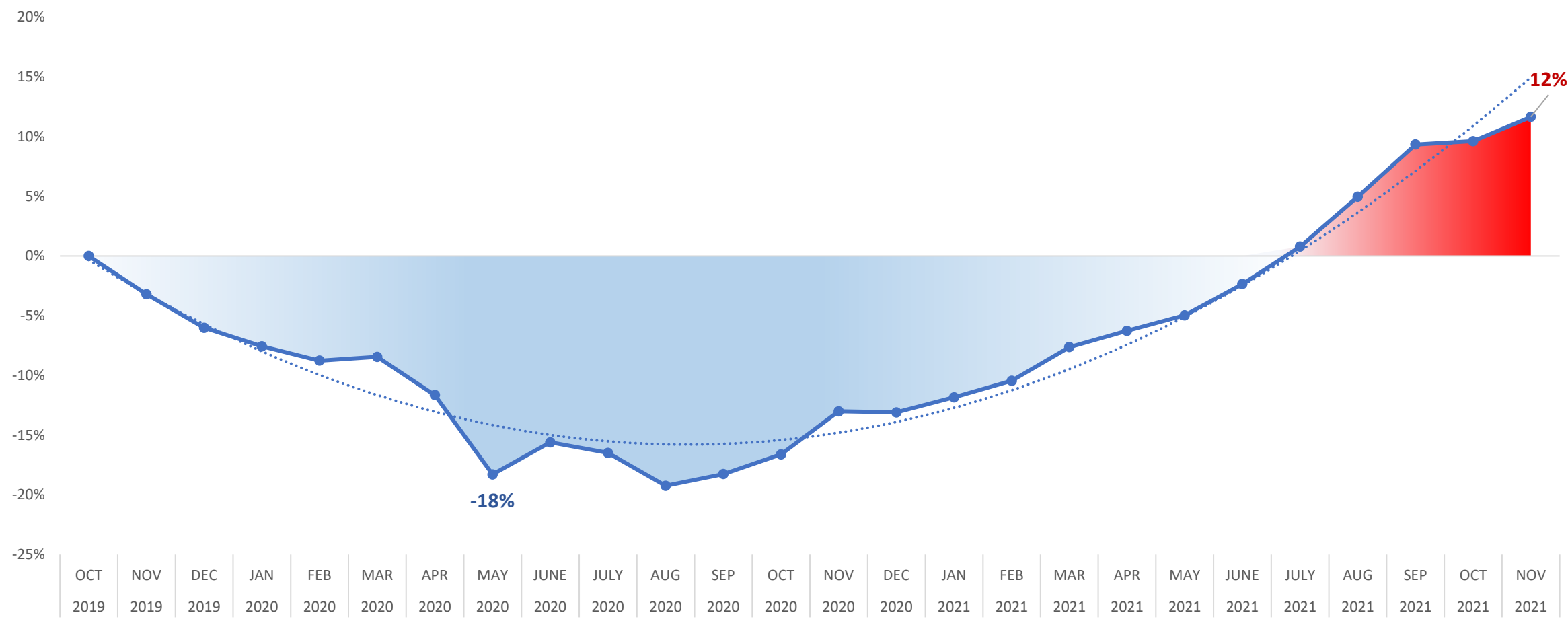


	Avg. Daily OPM 2021 Count	Forecast	Inmate difference
JAN '21	9,106	-	-
FEB	9,044	9,044	-
MAR	9,048	9,020	-28
APR	8,931	8,999	68
MAY	8,955	8,957	2
JUN	8,965	8,914	-51
JUL	9,009	8,890	-119
AUG	9,143	8,869	-274
SEP	9,253	8,827	-426
OCT	9,357	8,890	-467
NOV	9,426	8,908	-518
DEC		8,924	-
JAN '22		8,864	-
FEB		8,986	-

Avg. Daily Count (ADC) for 1st week of month

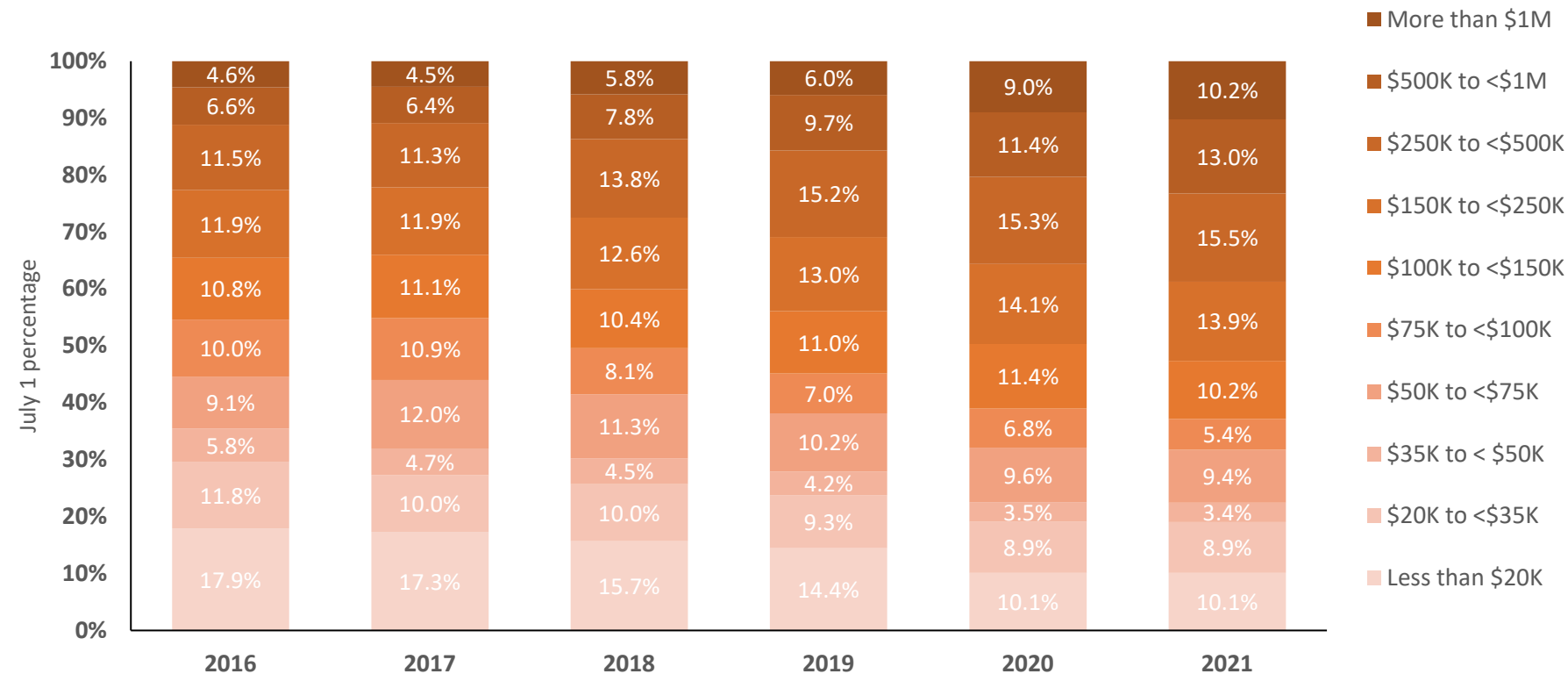
- Connecticut's correction population is 6% higher than the forecast (a 518-person difference).
- Even with the growing divergence from the forecast, the December 1, 2021, population is only 3% higher than one year ago (9,240 compared to 9,518 people)

NOVEMBER “MONTHLY INDICATORS REPORT” SPOTLIGHT: PRETRIAL CORRECTION POPULATION CHANGES DURING THE PANDEMIC



The above chart uses the October 1, 2019, pretrial population held in correction facilities as the benchmark, when the population last peaked prior to the pandemic’s onset. The chart then tracks the percentage change each month from that amount.

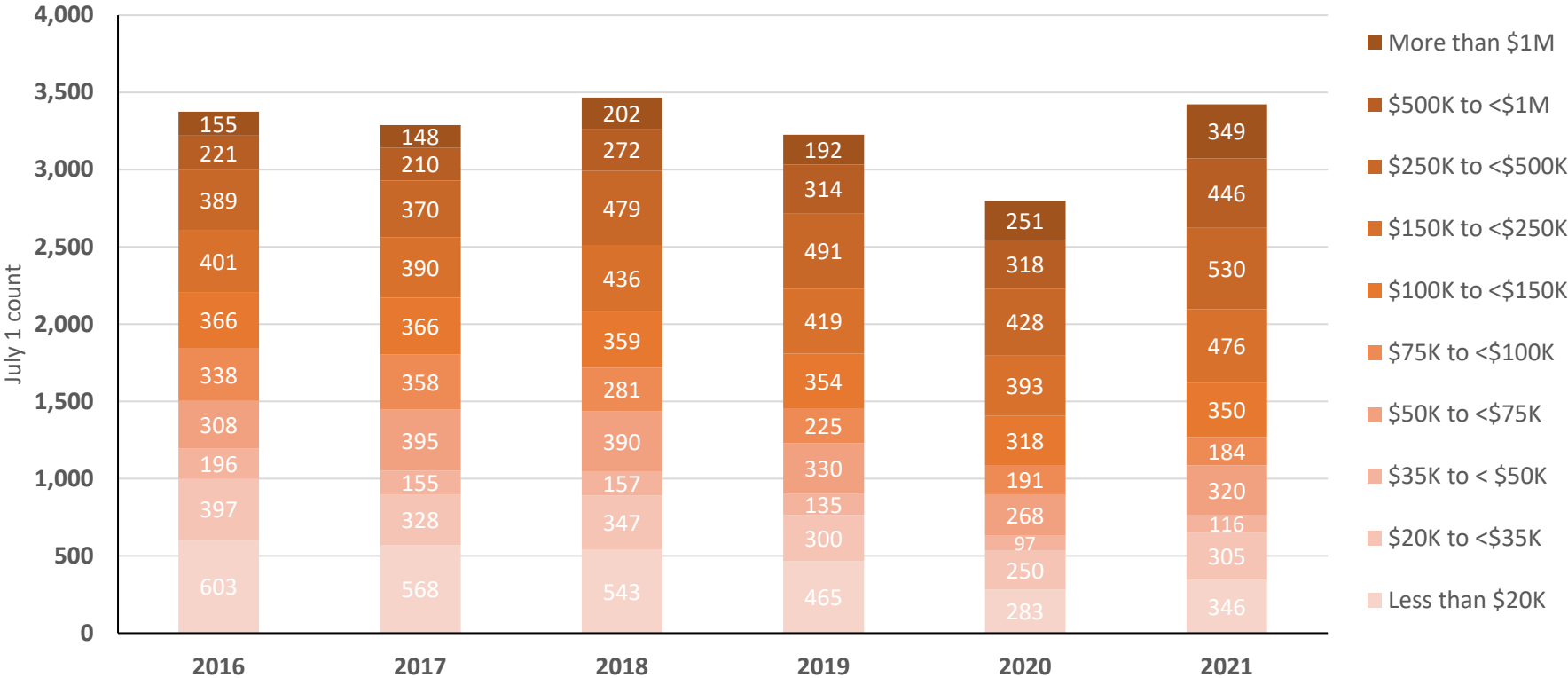
DOC Accused Population by Bond Amount Category Percentages (2016–2021)



Source: Department of Correction Research Monthly reports provided to OPM

- Note: Bonds reflect categorizations provided by DOC source reports.
- A number of characteristics factor into the setting of bond amounts. Source reports reflect aggregate data only. Detail about the controlling charges, the quantity of any additional charges, severities, or any other characteristics that may contribute to the bonds imposed following arrest were not provided with the monthly source data. The Judicial Branch may be a source of further historical analysis of such factors.

DOC Accused Population by Bond Amount Category Counts (2016–2021)



Source: Department of Correction Research Monthly reports provided to OPM

- Note: Bonds reflect categorizations provided by DOC source reports.
- A number of characteristics factor into the setting of bond amounts. Source reports reflect aggregate data only. Detail about the controlling charges, the quantity of any additional charges, severities, or any other characteristics that may contribute to the bonds imposed following arrest were not provided with the monthly source data. The Judicial Branch may be a source of further historical analysis of such factors.