



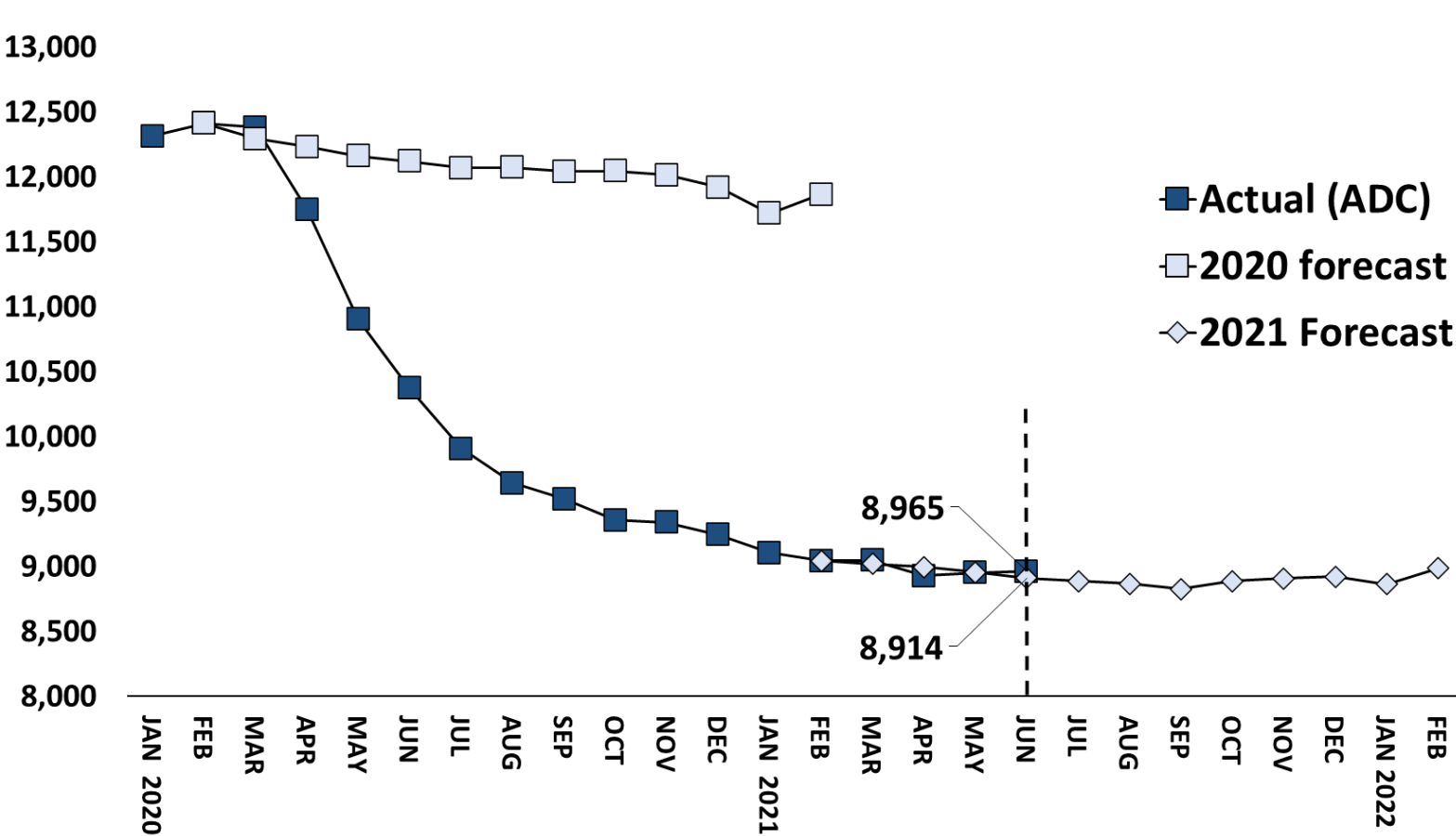
CJPAC JUNE 2021

Review of mid-year trends and discussion

Marc Pelka, *Undersecretary*
Kyle Baudoin, *Policy Development Coordinator*
Maurice Reaves, *Staff Attorney*
Kevin Neary, *Lead Planning Analyst*

Since February 2021, OPM's correction population forecast has tracked the actual population, which has remained stable over that period.

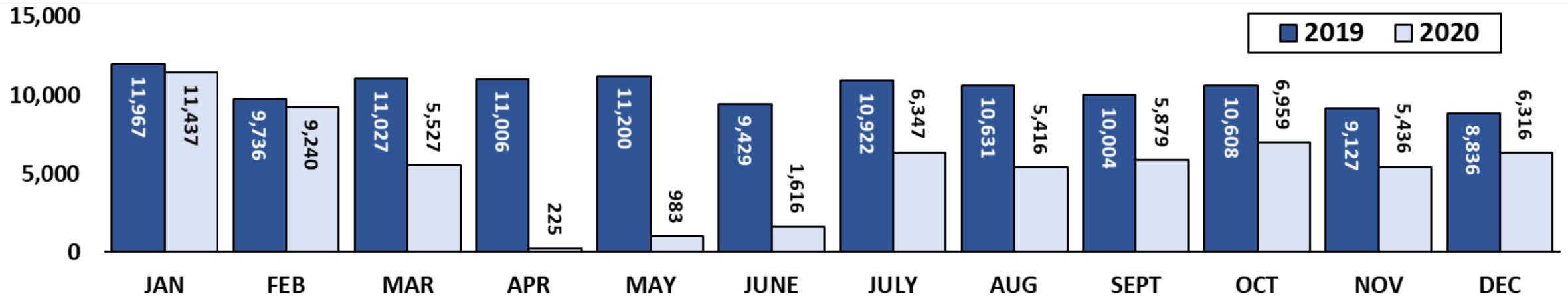
OPM correctional forecast versus actual population — 2020 and 2021



	Avg. Daily Count	OPM 2021 Forecast	Inmate difference
JAN '21	9,106	-	-
FEB	9,044	9,044	-
MAR	9,048	9,020	-28
APR	8,931	8,999	68
MAY	8,955	8,957	2
JUN	8,965	8,914	-51
JUL		8,890	-
AUG		8,869	-
SEP		8,827	-
OCT		8,890	-
NOV		8,908	-
DEC		8,924	-
JAN '22		8,864	-
FEB		8,986	-
Avg. Daily Count (ADC) for 1st week of month			

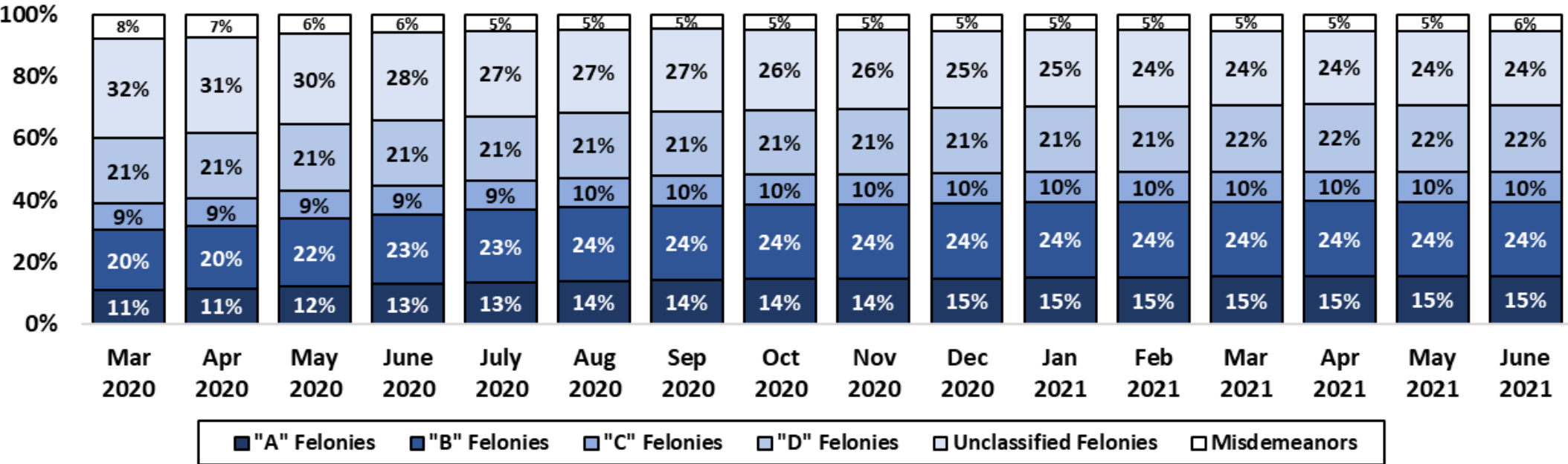
Monthly criminal case dispositions, which plummeted in the early months of the pandemic, have rebounded yet remain below pre-pandemic levels.

Criminal case dispositions – January 2019 to December 2020



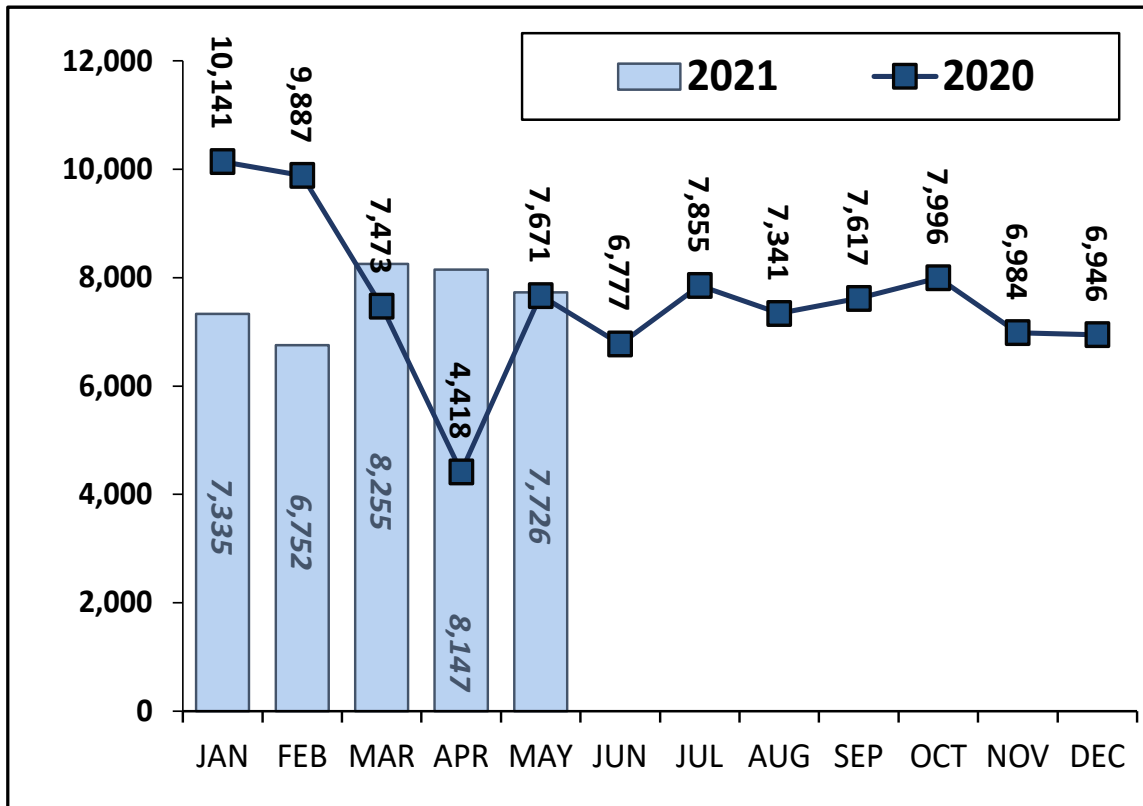
Since the onset of the COVID-19 pandemic, the correction population has increasingly consisted of people with more serious charges.

Change in the composition of corrections population (March 2020 to June 2021)



Although the correction population forecast is on target with the actual population, we are monitoring monthly indicators closely.

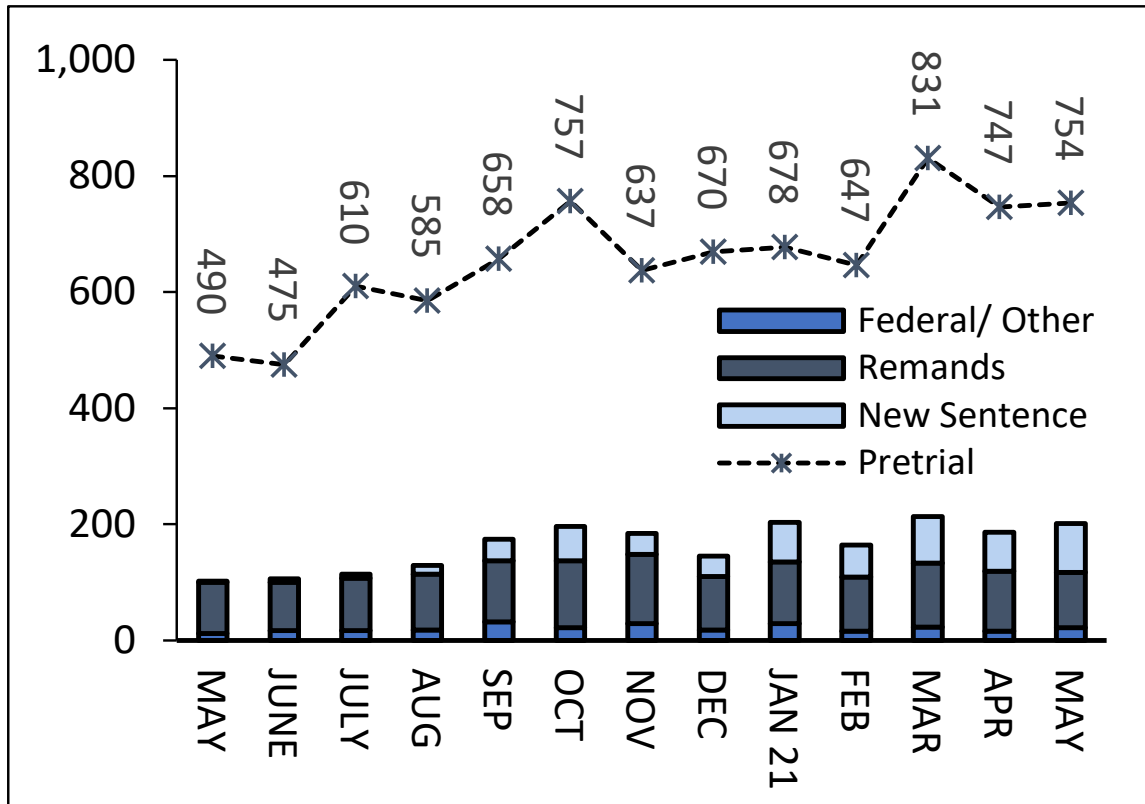
Statewide arrests – January 2020 to May 2021



- Although arrests have been level from March to May 2021, how will the latter half of to the year compare to pre-pandemic levels?
- How will increases in types of gun and violent crime in many communities in Connecticut and the US affect criminal justice trends?

Along with monthly statewide arrests, DOC pretrial admissions are another early indicator to monitor closely.

Monthly DOC Admissions – May 2020 to 2021



- What will the impact be of criminal cases that accumulated during the pandemic as they are increasingly disposed of?
- Will the increase in DOC pretrial admissions continue, especially during the summer months?
- Will the probation population, which dropped during the pandemic as fewer people started new terms, rebound?



Victim needs for services and supports.

- How have the needs of victims been impacted by the pandemic and what are their longer-term needs?
- How did service providers adapt to the pandemic, including using technology, and what are long-term applications for these innovative approaches?
- As criminal justice system continue regressing to pre-pandemic operations and trends, what are key considerations and needs involving victims?