

University of Connecticut

Review of the 2015 Accountability Report

Presented to:

Connecticut Higher Education Coordinating Council

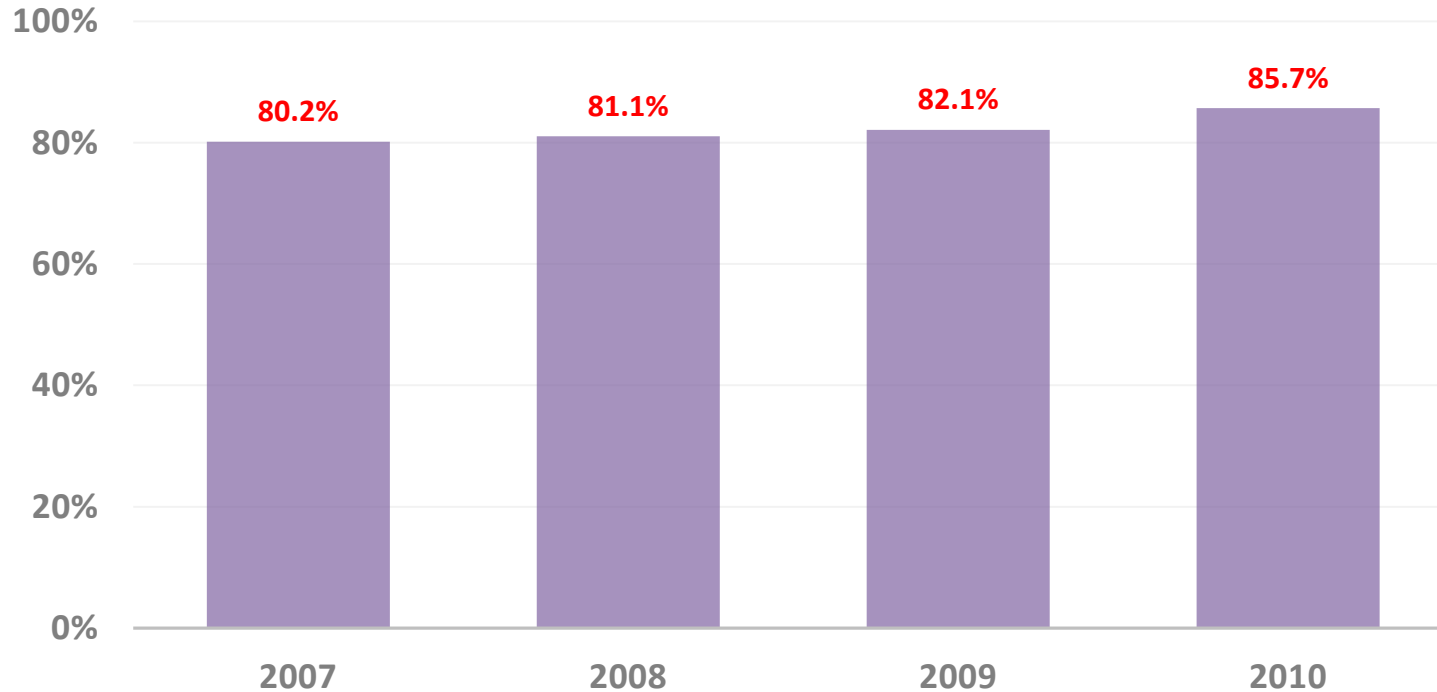
October 5, 2015

University of Connecticut

- Founded 1881, Land Grant and Sea Grant College, Space Grant Consortium Institution
- 14 Schools and Colleges (including Schools of Medicine and Dental Medicine, Pharmacy and Law)
- Total enrollment: 31,624 (23,407 Undergraduate and 8,217 Graduate/Professional)
- Degrees awarded: 8,080 (including 372 doctorates)
- Total faculty and staff 9,874 (including UCHC)
- Budget: \$2.3 billion
- Ranks among the Top 20 public research universities in the nation (U.S. News & World Report America's Best Colleges - 2016)

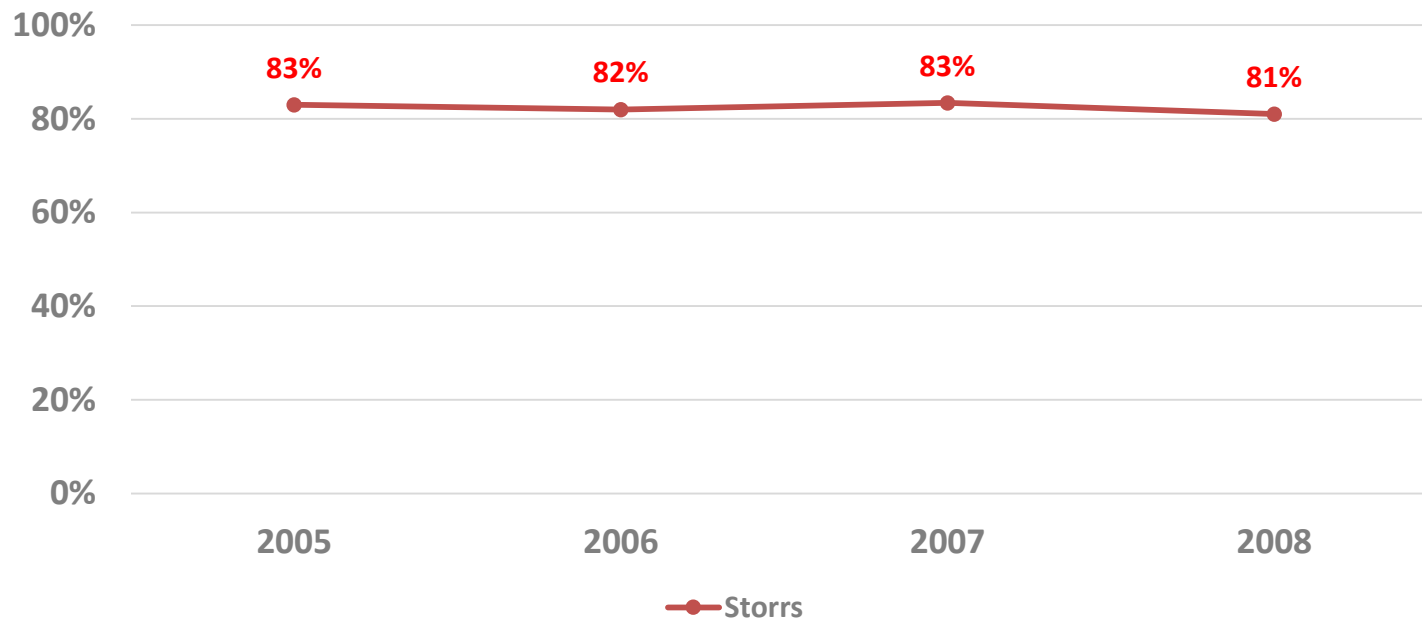
Percent on track to completing on-time

(Full-Time student completing 24 credits in 1st academic year)



Graduation rate of full-time, first-time students

(6 Year Graduation Rates – 150% of normal time)



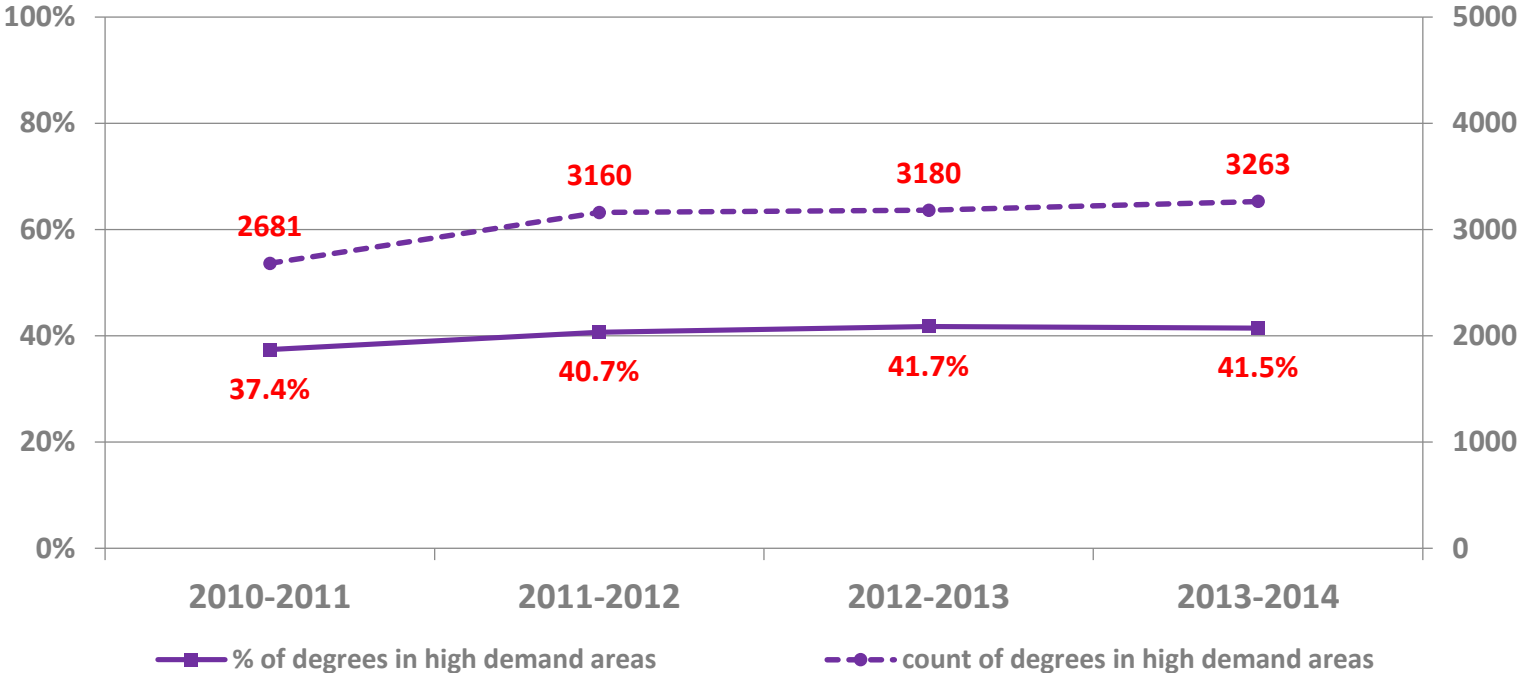
Time and credits to degree

Year	Bachelor's Degree-Seeking			
	Full-Time Students	Transfer In 30 or Fewer Credits	Transfer In 31 to 59 Credits	Transfer in 60 or More Credits
Average Length of Time to Degree (Years, rounded to the nearest 2 decimal points)				
2008-09	4.3	3.5	3.0	2.8
2009-10	*	*	*	*
2010-11	4.2	3.4	3.1	3.2
2011-12	4.2	3.3	3.0	2.9
Average Credits to Degree				
2008-09	124	100	83	56
2009-10	*	*	*	*
2010-11	125	101	83	55
2011-12	126	98	83	55

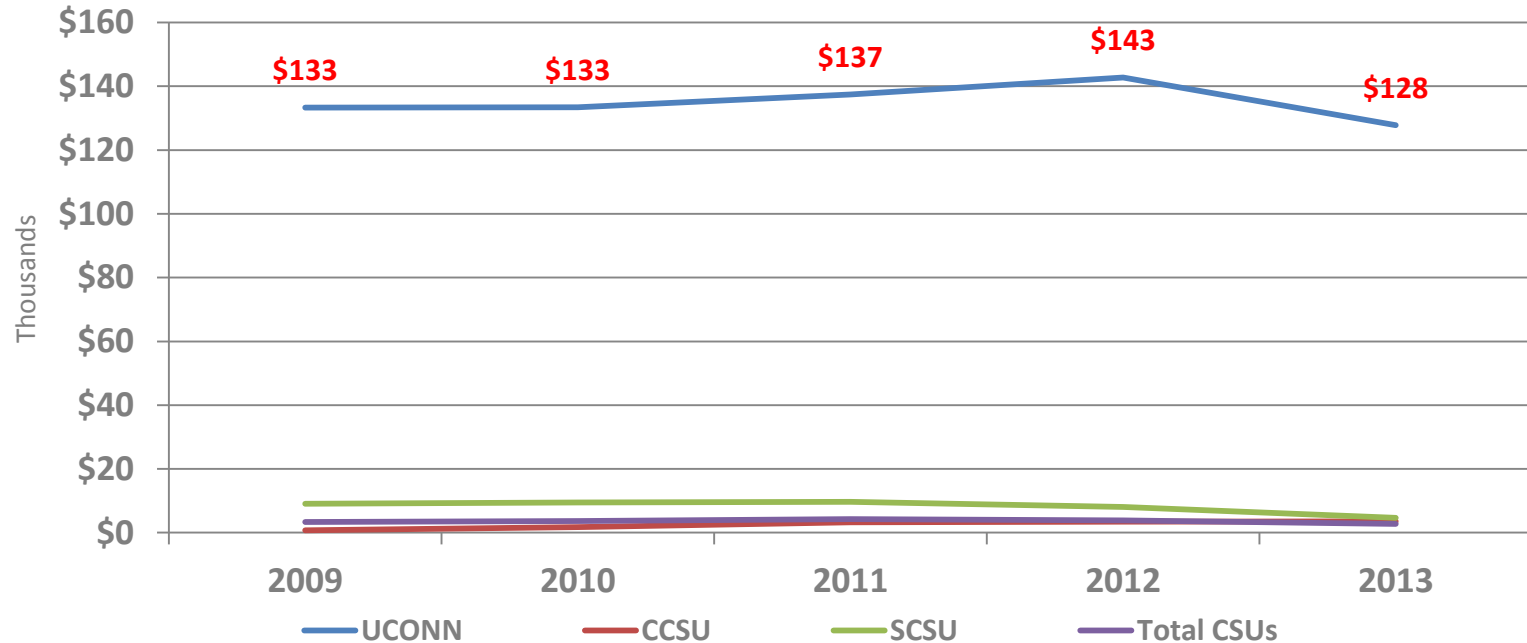
Tuition and fees as % of median household income

Institution Name	2010-2011 % of HH \$	2011-2012 % of HH \$	2012-2013 % of HH \$
University of Connecticut-Storrs	16.3%	16.2%	16.7%
University of Connecticut-Avery Point	13.5%	13.5%	13.9%
University of Connecticut-Stamford	13.5%	13.5%	13.9%
University of Connecticut-Tri-Campus	13.5%	13.5%	13.9%
University of Connecticut	14.2%	14.2%	14.6%

Completions in fields with high workforce demand: STEM, health, education



External research funding per full-time faculty



Completions by race/ethnicity and gender

University of Connecticut	2010-2011		2011-2012		2012-2013	
	N	%	N	%	N	%
Total Men	3,466	46.4%	3,502	46.8%	3,423	46.7%
Total Women	4,004	53.6%	3,980	53.2%	3,899	53.3%
American Indian or Alaska Native	18	0.2%	16	0.2%	20	0.3%
Asian	516	6.9%	554	7.4%	529	7.2%
Black or African American	392	5.2%	411	5.5%	377	5.1%
Hispanic or Latino	400	5.4%	426	5.7%	417	5.7%
Native Hawaiian or Other Pacific Islander	1	0.0%	1	0.0%	10	0.1%
White	4,739	63.4%	4,699	62.8%	4,686	64.0%
Two or more races	14	0.2%	18	0.2%	51	0.7%
Race/ethnicity unknown	988	13.2%	925	12.4%	774	10.6%
Nonresident alien	402	5.4%	432	5.8%	458	6.3%
Minority¹	1,341	18.0%	1,426	19.1%	1,404	19.2%
Grand total	7,470	100.0%	7,482	100.0%	7,322	100.0%