



CONNECTICUT
Office of Health Strategy

SIM Quality Council

October 10, 2018

© MARK ANDERSON

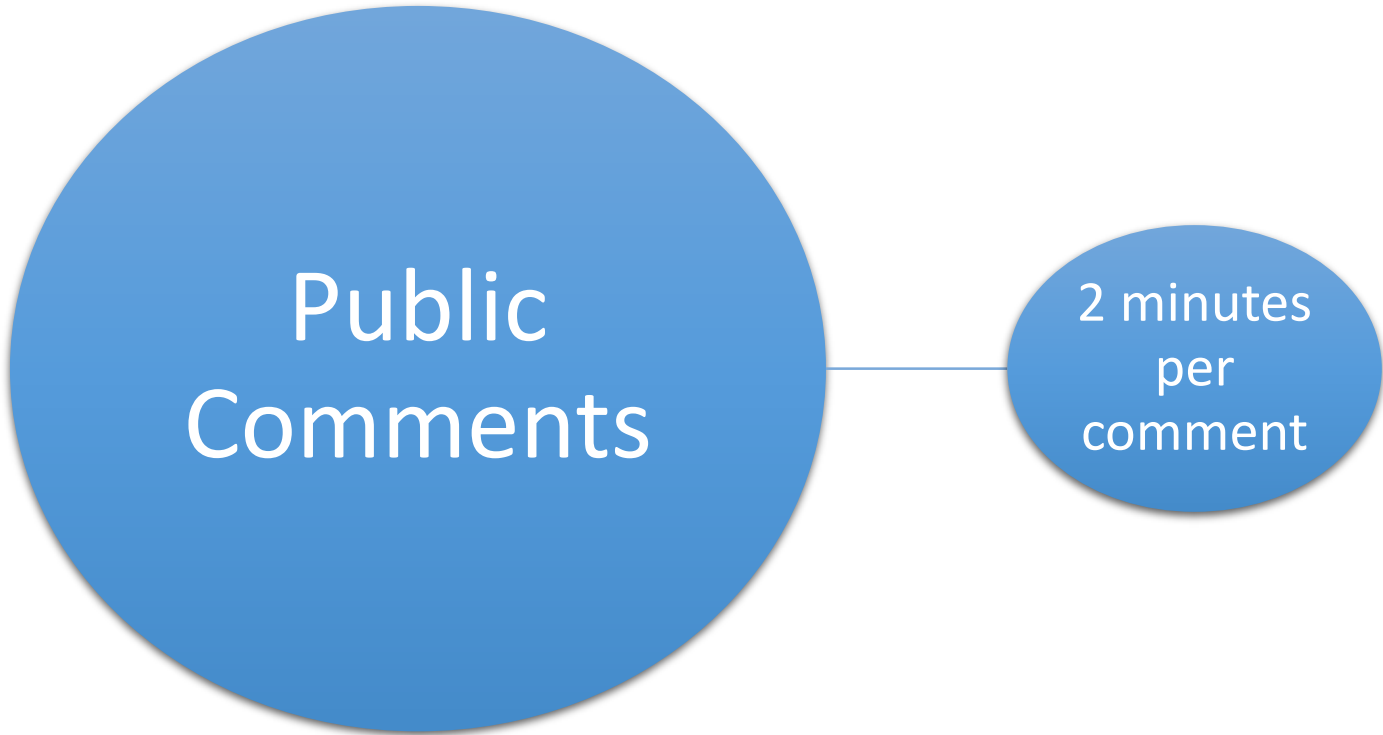
WWW.ANDERTOONS.COM



"This time with feeling!"

Meeting Agenda

Item	Allotted Time
Introductions/Call to Order	5 min
Public Comment	5 min
Approval of Minutes	5 min
Purpose of Today's Meeting	5 min
Public Scorecard Update	90 min
Looking Ahead – Endorsement and Alignment	10 min
Next steps and Adjournment	5 min

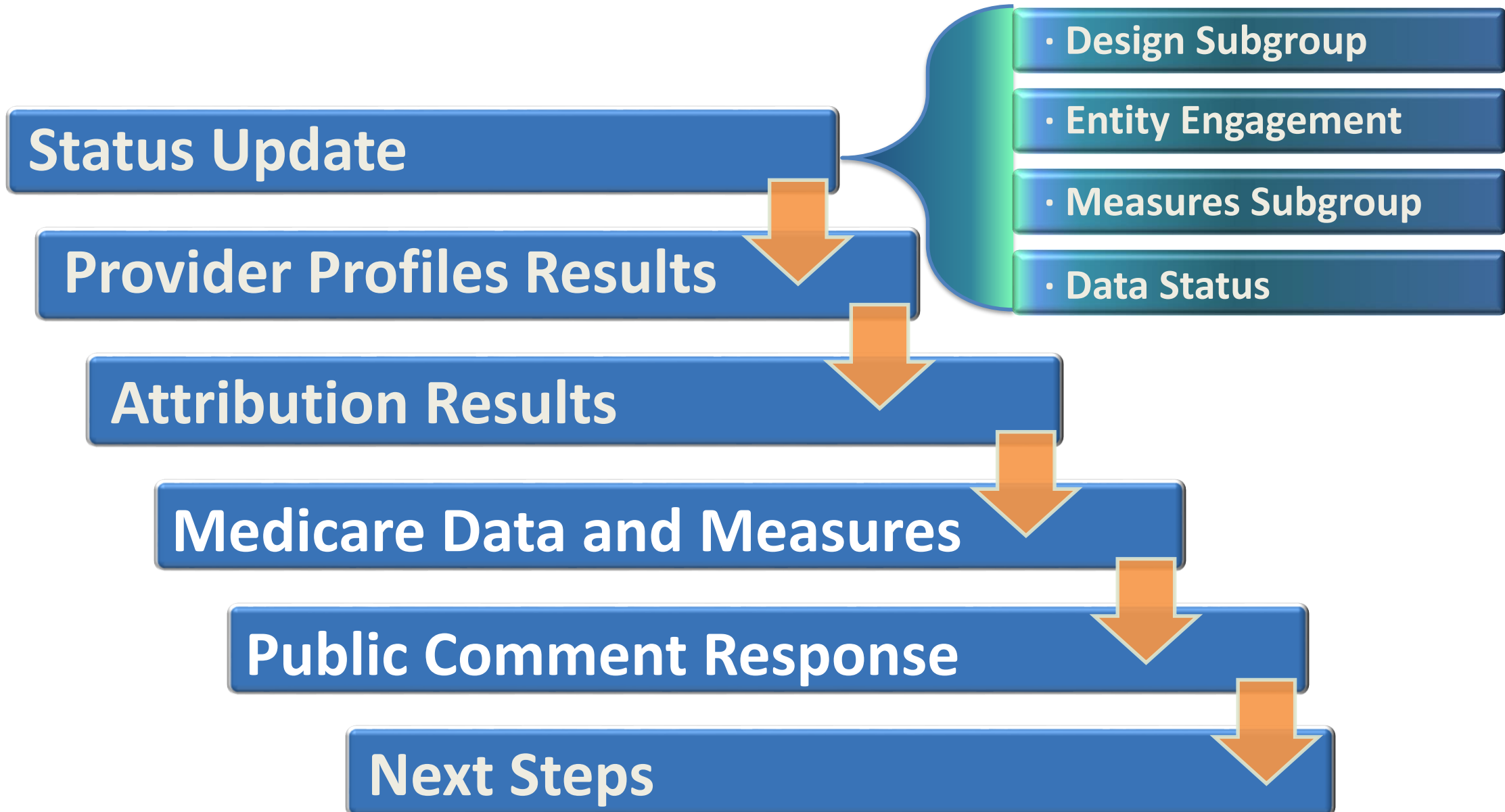


Approval of the Minutes

Purpose of Today's Meeting

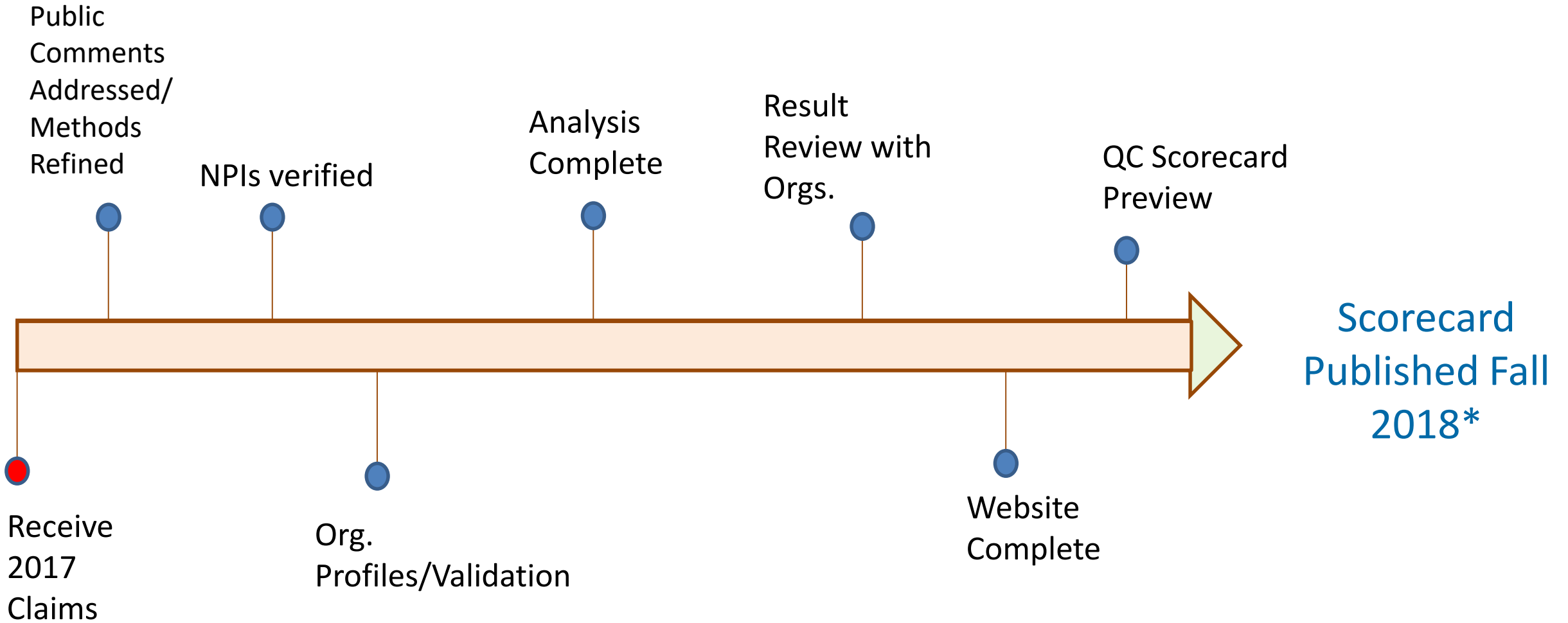
Public Scorecard

Agenda: Online Healthcare Scorecard



Status Update

Status Update (1 of 7)- workflow



*Dependent upon receipt of remaining 2017 claims from APCD

Status Update (2 of 7) – Design Subgroup

- Continued website development with input from design subgroup
- Held two meetings & additional content review exercise
 - Health topic search options for finding related measures:

▶ Women's Health

▶ Child & Adolescent Health

▶ Preventive Care

▶ Behavioral Health

▶ Patient Experience

▶ Chronic Disease

▶ Care Coordination

▶ Diabetes

▶ Appropriate Use of Antibiotics and Screening Tests

▶ Medications

Status Update (3 of 7) – Design Subgroup

- Assignment of measures to health topics
- Measure labels & hover definition modifications
- Summary Results Display (placement of options to customize results display and instructions, appearance, usefulness of data presentation & description)
- Measure Report Display (appearance, usefulness of data presentation)
- About section

Status Update (4 of 7) – Entity Engagement

- Provider lists out to Healthcare Organizations
 - Names obtained off of websites, merged with NPPES
 - Lists due back by October 1st

Soundview Medical Associates					
NPI	Last Name	First Name	Middle Name	Taxonomy	Specialty
1750489464	Bookas	Timothy		207Q00000X	Family Practice/Medicine
1487764445	Svogun	John	A	207Q00000X	Family Practice/Medicine
1134500051	Thomas	Kornelia		207Q00000X	Family Practice/Medicine
1619130705	Bande	Sharyu	Amit	207R00000X	Internal Medicine
1538279583	Chi	Tao-nan		207R00000X	Internal Medicine
1962509489	Cochran	Charles	P	207R00000X	Internal Medicine
1790895738	Kelly	Paul	R	207R00000X	Internal Medicine
1174620694	Lautenbach	Denise	K	207R00000X	Internal Medicine
1255560124	Roesch	Eleonore		207R00000X	Internal Medicine
1811918683	Schwartz	Michael	B	207R00000X	Internal Medicine
1649204603	Varadarajan Rukmani	Vidhya		207R00000X	Internal Medicine
1043442148	Wei	Xiaofei		207R00000X	Internal Medicine
1497809743	Chawla	Stephanie	Shannon	363AM0700X	Physician Assistant
1952411936	Farina	Maryann	R	363AM0700X	Physician Assistant
1871851311	Guanco-Murphy	Nicole		363LF0000X	Nurse Practitioner
1346765559	Webel	Kaitlin	E	363LF0000X	Nurse Practitioner

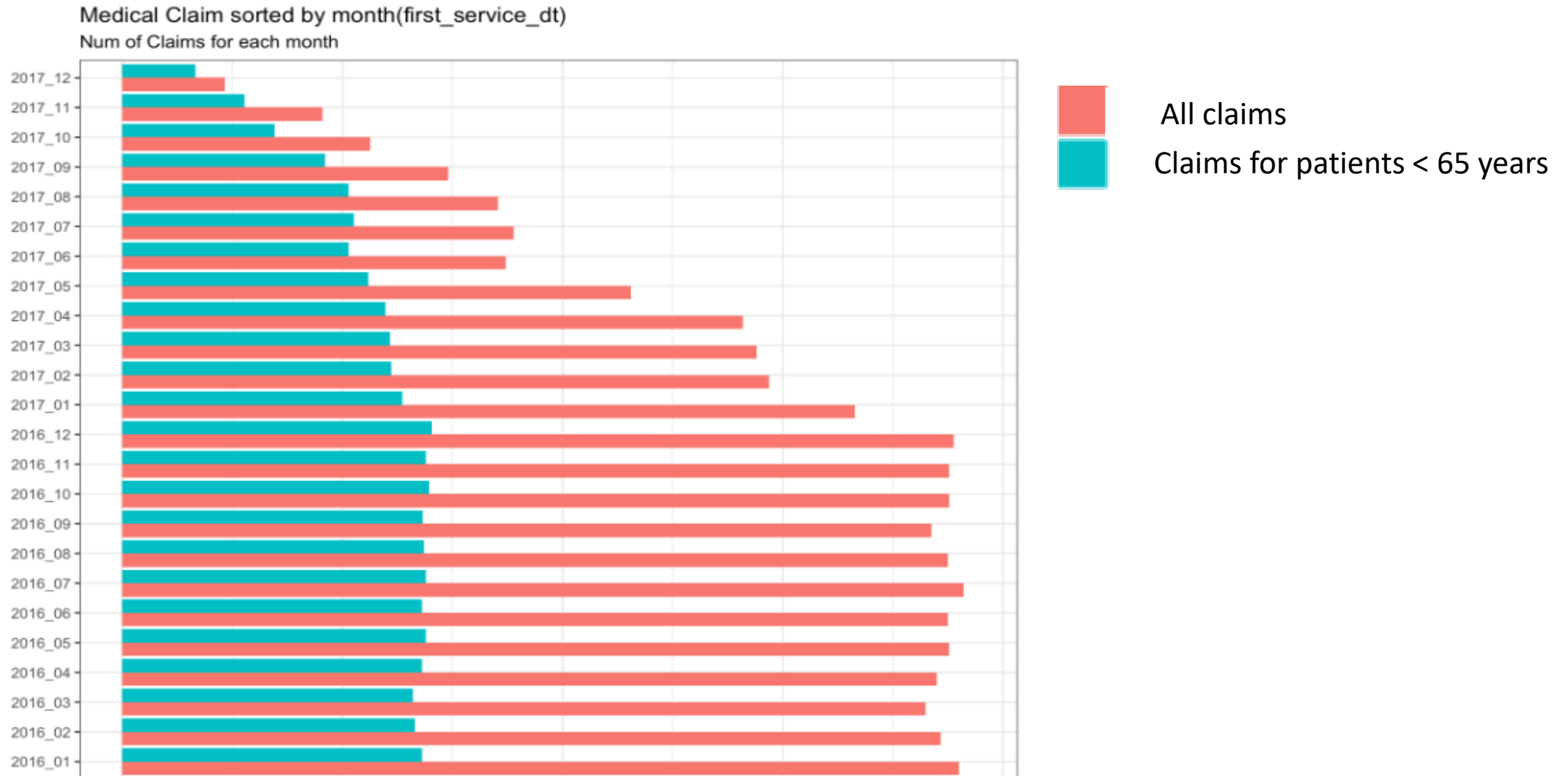
Status Update (5 of 7) -- Measures Subgroup

- Measures and Methods subgroup decision on taxonomy (provider specialty classification) for attribution
 - 3 PCP categories were eliminated
 - School Nurse Practitioners
 - Preventive Medicine/Occupational Environmental Medicine Physicians
 - Public Health & General Preventive Medicine Physicians
 - 2 OB/GYN categories were eliminated
 - Maternal & Fetal Medicine
 - Reproductive Endocrinology

Status Update (6 of 7)

- Continued work with APCD commercial claims data
 - Current commercial data not complete for FY 2017 (9/30/16-10/1/17)
 - No date was given for delivery of remaining commercial and Medicare claims from APCD

Status Update (7 of 7) – Claims status



Provider Profiles

Provider profiles - Counts by specialty and entity (1 of 4)

Adv Networks	Preventive Medicine (PM)		Family Medicine				General	Internal Medicine			Pediatrics	
	Occ/Environ	General PM	Family	Ado	Adult	Ger	Gen Pract	Internal	Ado	Ger	Ped	Ado
A	0	0	9	0	0	0	0	113	0	0	137	17
B	0	0	25	0	0	0	0	18	0	0	7	0
C	0	0	36	0	0	0	0	49	0	0	14	2
D	0	0	7	0	1	0	0	39	1	2	10	1
E	2	0	102	1	2	2	0	438	1	9	144	12
F	1	0	83	0	1	0	0	61	0	0	16	0
G	0	0	0	0	0	0	0	0	0	0	19	1
H	0	0	60	0	0	0	0	64	0	0	68	3
I	0	0	57	0	1	0	0	130	0	3	33	10
J	0	0	8	0	0	1	1	96	0	1	56	2
K	0	0	3	0	0	0	0	9	0	0		0
L	0	0	27	0	0	0	0	107	1	0	71	3
M	0	0	2	0	0	1	0	85	0	1	8	0
N	0	0	30	0	0	0	0	115	0	1	29	1
O	0	0	9	0	0	0	1	85	0	2	27	1
P	0	0	45	0	4	0	1	256	0	4	78	1
Q	0	0	22	0	0	0	0	81	0	1	34	0
R	0	0	2	0	0	1	1	100	1	5	56	0
S	2	0	68	1	1	2	3	628	1	18	268	22
Total	5	0	595	2	10	7	7	2474	5	47	1075	76

Provider counts by specialty and entity (2 of 4)

Adv. Networks	OB/GYN					NP/CNS	
	OB/GYN	Obstetrics	Gynecology	Reproductive endocrinology	Maternal fetal	OB/GYN	Women's Health
A	9	0	0	0	1	0	0
B	3	0	1	1	0	0	0
C	19	0	0	0	0	1	0
D	6	0	0	1	0	0	0
E	91	2	7	3	7	1	3
F	10	0	2	0	1	0	1
G	0	0	0	0	0	0	0
H	0	0	0	0	0	0	0
I	46	0	5	0	0	0	1
J	33	0	2	0	3	0	1
K	0	0	0	0	0	0	0
L	32	1	3	8	2	0	0
M	16	0	1	0	0	0	0
N	23	0	0	3	1	0	0
O	25	0	2	0	3	0	0
P	45	1	4	6	2	0	0
Q	35	0	1	1	3	0	0
R	35	2	5	7	4	0	1
S	142	5	13	15	9	0	2
Total	570	11	46	45	36	2	9

Provider counts by specialty and entity (3 of 4)

Adv Networks	Nurse Practitioner (NP)								Clinical Nurse Specialist (CNS)						Physician Assistant (PA)	
	School	NP	Adult	Comm	Family	Ger	Ped	Primar y	CNS	Adult	Comm	Family	Ger	Ped	PA	PA Med
A	0	21	6	3	34	1	27	1	0	0	0	1	0	1	0	1
B	0	3	1	0	6	0	0	0	0	0	0	0	0	0	3	1
C	0	0	0	0	0	0	0	0	0	0	0	0	0	0	30	22
D	0	4	2	0	4	1	0	1	0	0	0	0	0	0	11	4
E	0	135	49	0	75	9	4	5	1	2	1	0	0	0	223	64
F	0	3	0	0	16	0	0	0	0	0	0	0	0	0	5	0
G	0	1	0	0	2	0	5	0	0	0	0	0	0	0	0	1
H	0	14	5	0	41	1	14	2	0	0	0	0	0	0	31	7
I	0	17	3	0	12	2	1	0	0	0	0	0	0	0	10	5
J	0	9	1	0	8	0	2	0	0	0	0	0	0	0	31	23
K	0	0	0	0	2	0	0	0	0	0	0	0	0	0	0	2
L	0	0	0	0	0	0	0	0	0	0	0	0	0	0	0	0
M	0	20	8	0	3	0	0	1	0	0	0	0	0	0	8	9
N	0	6	1	0	6	0	1	0	0	0	0	0	0	0	5	3
O	0	0	0	0	0	0	0	0	0	0	0	0	0	0	0	0
P	0	0	1	0	1	0	0	0	0	0	0	0	0	0	2	1
Q	0	5	1	0	25	0	2	1	0	0	0	0	0	0	15	2
R	0	2	1	0	6	0	11	0	0	0	0	0	0	0	6	0
S	0	6	10	0	24	0	2	3	0	0	0	0	0	0	16	7
Total	0	246	89	3	265	14	69	14	1	2	1	1	0	1	396	152

Providers by specialty and entity (4 of 4)

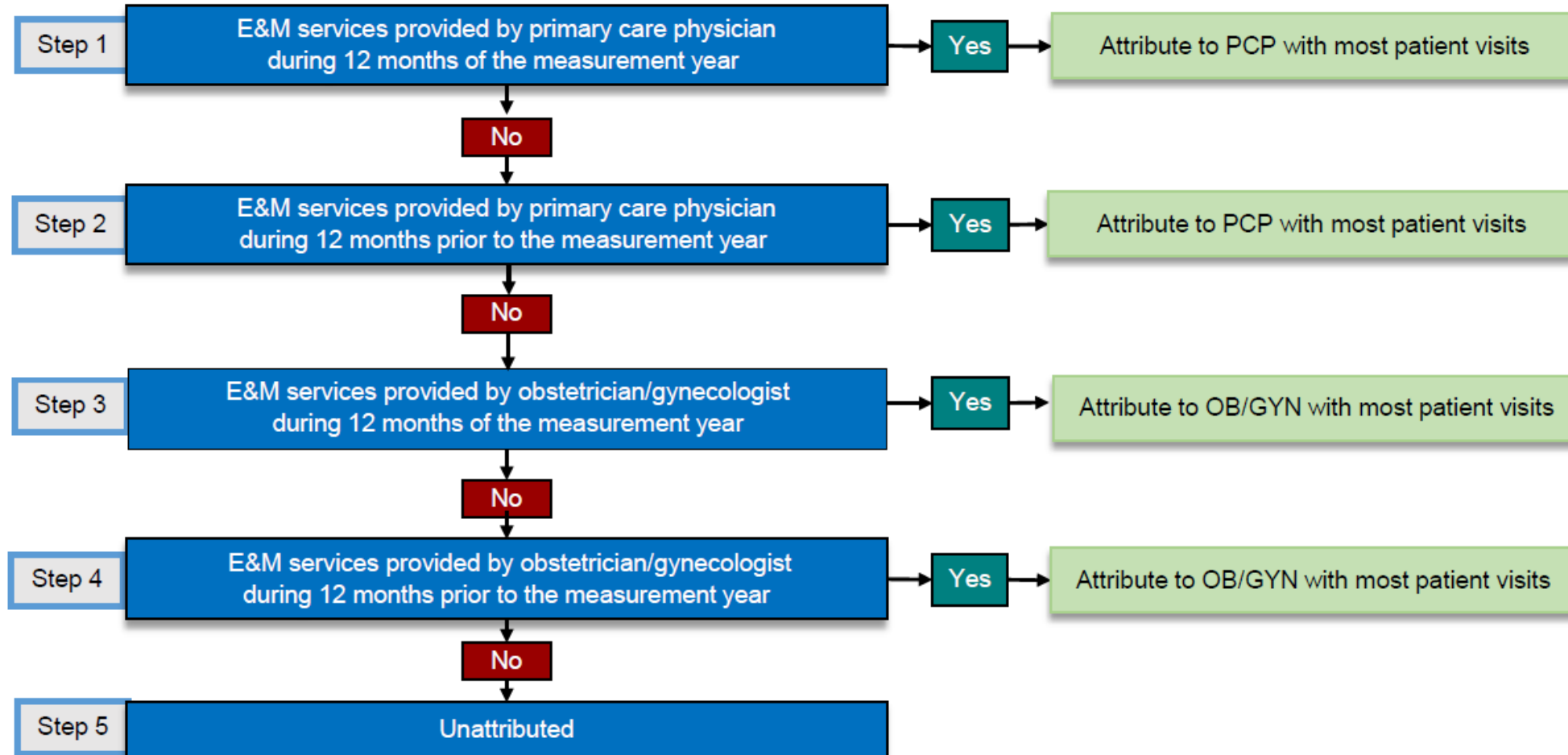
Network	Int Med	Fam med	Gen Pract	Peds	NP	CNS	PA	OB/GYN
A	113	9	0	154	80	2	1	9
B	18	25	0	7	8	0	3	4
C	49	36	0	16	0	0	40	20
D	42	8	0	11	11	0	11	6
E	448	107	0	156	168	4	177	104
F	61	84	0	16	19	0	5	13
G	0	0	0	20	7	0	1	0
H	64	60	0	71	73	0	38	0
I	132	58	0	43	33	0	14	52
J	95	9	1	58	13	0	31	34
K	9	3	0	0	2	0	2	0
L	108	27	0	74	0	0	0	36
M	86	3	0	8	27	0	8	17
N	116	30	0	30	12	0	6	23
O	87	9	1	28	0	0		27
P	260	49	1	78	2	0	3	49
Q	82	22	0	34	27	0	14	36
R	106	3	1	56	19	0	6	43
S	647	72	3	287	42	0	20	162

Initial Attribution Results

Attribution Results (1 of 4)

- Attribution logic has been coded and run on FY 2016 data

Patient Attribution Flow Chart

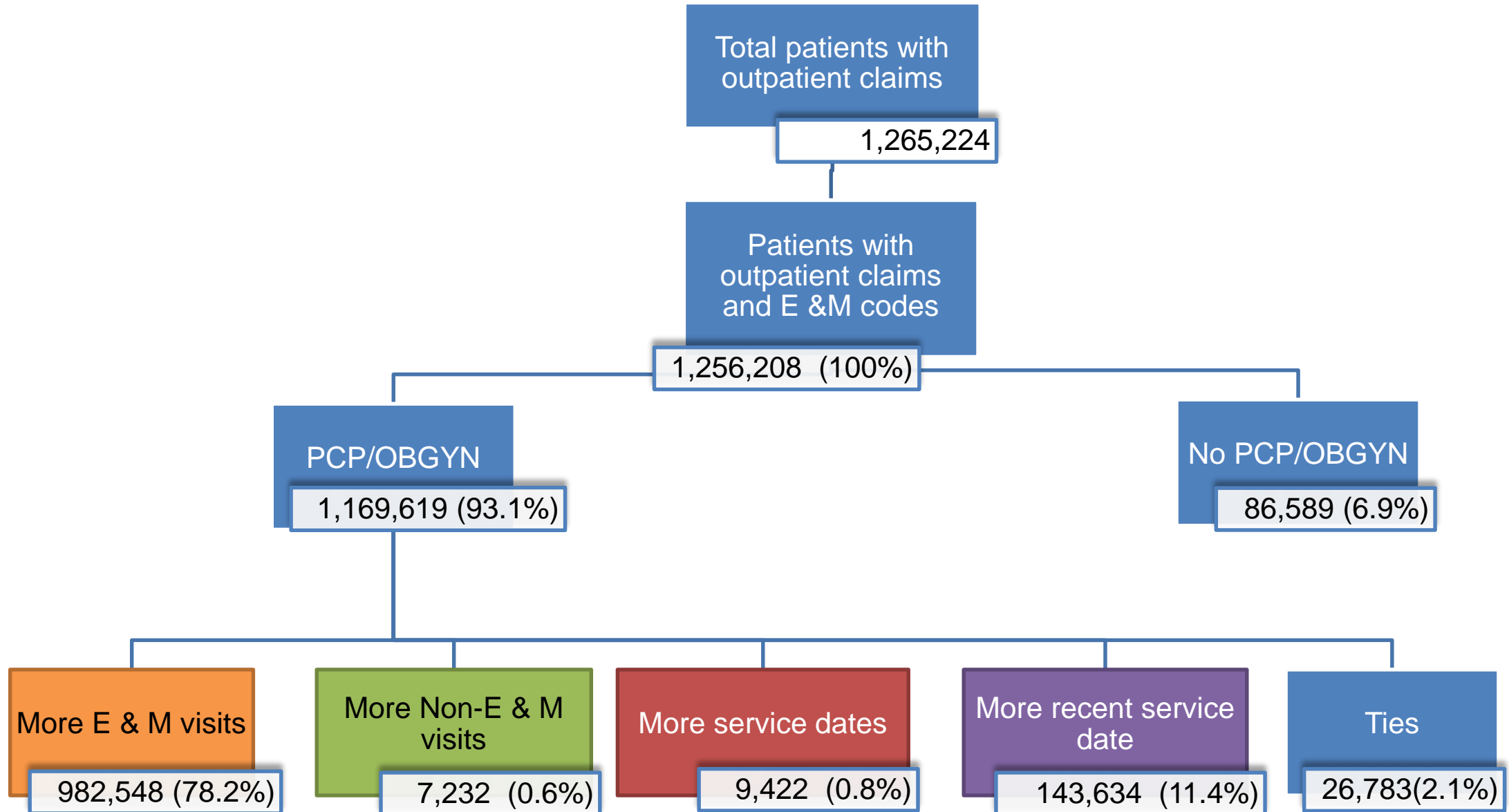


Attribution Results (4 of 4)



Attribution Flowchart.png

Attribution results (3 of 4)



Attribution Results (4 of 4)

Taxonomy category	N
Internal Medicine	536,808
Family Medicine	210,986
Pediatrics	148,504
Nurse Practitioner	126,765
Physician Assistant	85,930
Obstetrics/Gynecology	28,330
General Practice	4,951
Clinical nurse specialist	562
Unattributed	86,589
Ties	26,783
Total	1,256,208

Initial Measure Calculations

Initial Measure Calculations (1 of 5)

- Initial 2016 results are in for some measures
 - By organization (blinded)
 - Work still needs to be done with healthcare organizations
 - Validation
 - Provider lists

Initial Measure Calculations – Breast Cancer Screening (2 of 5)

Advanced network	Numerator	Denominator	Rate	Confidence interval	
				LL	UL
A	3728	4735	78.7	77.6	79.9
B	771	917	84.1	81.7	86.5
C	1855	2332	79.6	77.9	81.2
D	873	1088	80.2	77.9	82.6
E	13438	16393	82.0	81.4	82.6
F	2392	2830	84.5	83.2	85.9
G	*	*	*	*	*
H	6106	7308	83.6	82.7	84.4
I	3191	4030	79.2	77.9	80.4
J	2629	3251	80.9	79.5	82.2
K	599	752	79.7	76.8	82.5
L	3018	3722	81.1	79.8	82.3
M	2509	2944	85.2	83.9	86.5
N	2881	3570	80.7	79.4	82.0
O	1967	2436	80.8	79.2	82.3
P	4824	6075	79.4	78.4	80.4
Q	383	493	77.7	74.0	81.4
R	401	521	77.0	73.4	80.6
S	10061	12520	80.4	79.7	81.1

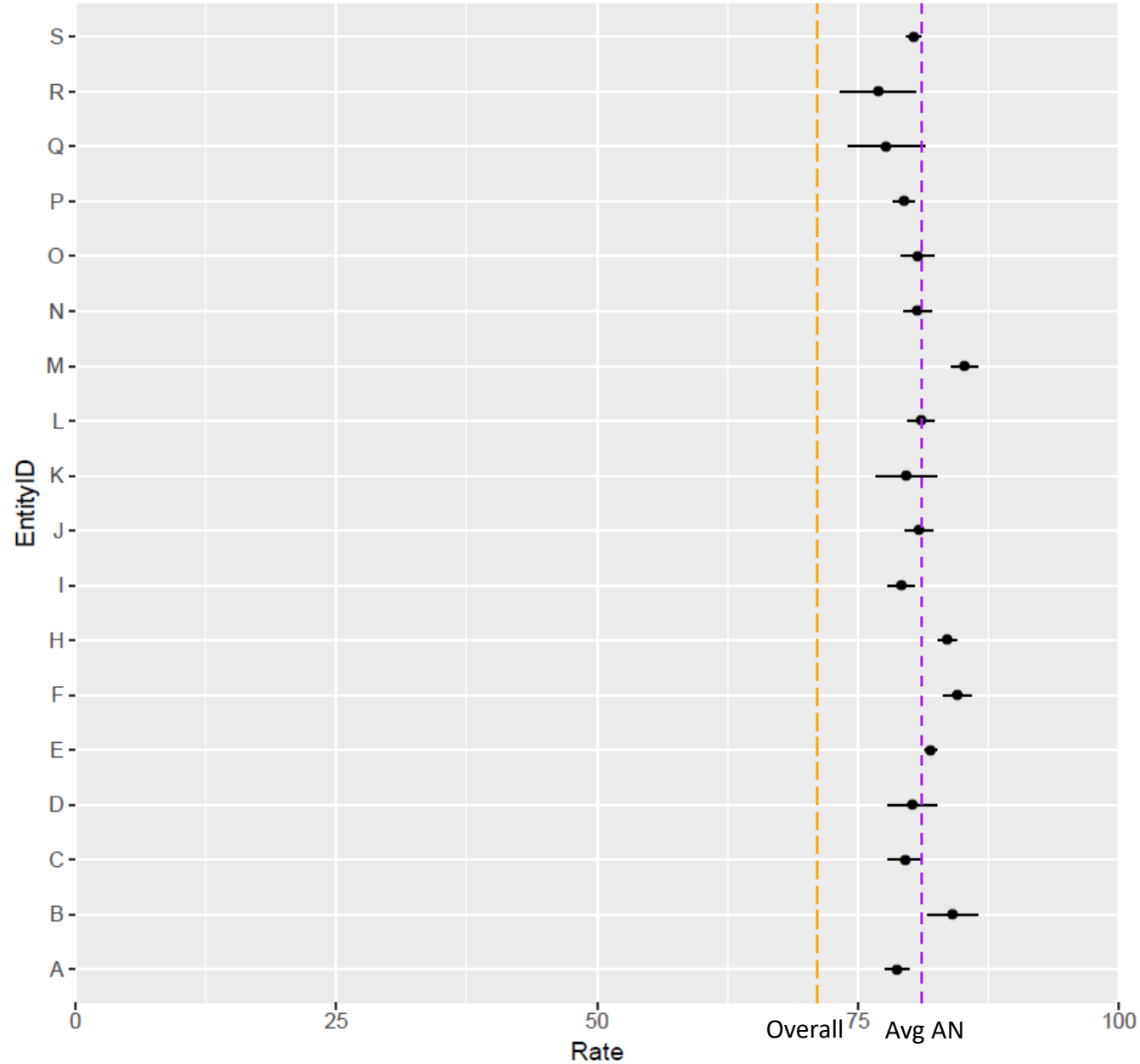
Narrow CI range
(±0.6%)

Rate ranges from 77.0% to 85.2%

Broader CI range
(±3.7%)

* Numbers are too small for computation of confidence interval.

Initial Measure Calculations – Breast Cancer Screening (3 of 5)



Initial Measure Calculations: Medication Management for People with Asthma (4 of 5)

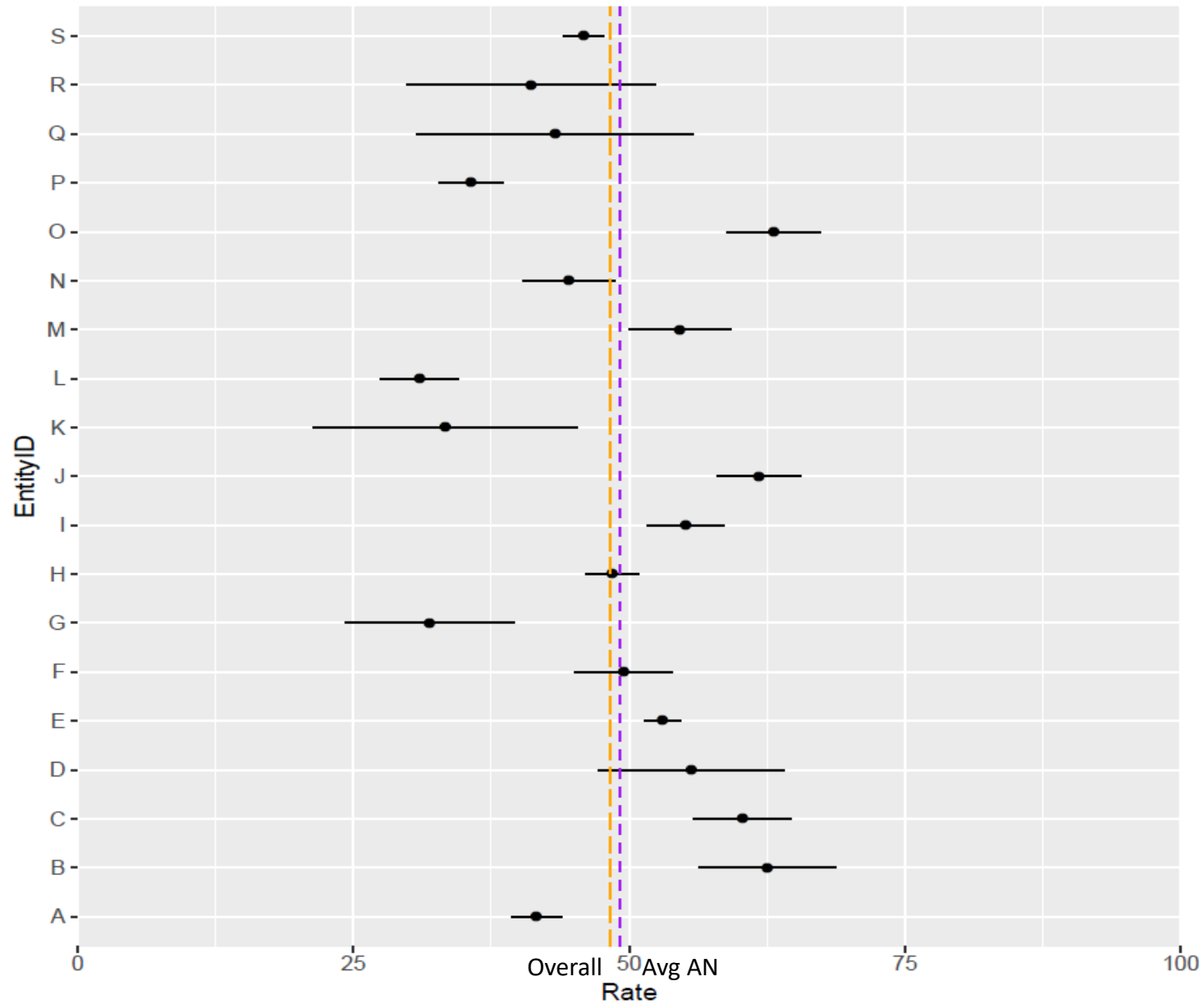
Advanced network	Numerator	Denominator	Rate	Confidence interval	
				LL	UL
A	763	1834	41.6	39.4	43.9
B	147	235	62.6	56.4	68.7
C	281	466	60.3	55.9	64.7
D	74	133	55.6	47.2	64.1
E	1783	3362	53.0	51.4	54.7
F	246	497	49.5	45.1	53.9
G	45	141	31.9	24.2	39.6
H	807	1665	48.5	46.1	50.9
I	423	767	55.2	51.6	58.7
J	383	620	61.8	58.0	65.6
K	20	60	33.3	21.4	45.3
L	203	654	31.0	27.5	34.6
M	244	447	54.6	50.0	59.2
N	237	532	44.6	40.3	48.8
O	320	507	63.1	58.9	67.3
P	376	1054	35.7	32.8	38.6
Q	26	60	43.3	30.8	55.9
R	30	73	41.1	29.8	52.4
S	1248	2721	45.9	44.0	47.7

Narrow CI range
(±1.6%)

Rate ranges from 31.0% to 63.1%

Broad CI range
(±12.5%)

Initial Measure Calculations: Medication Management for People with Asthma (5 of 5)



Medicare Data and Measures

Medicare Data and Measures (1 of 3)

- Most recent Medicare prescription data currently available is from 2015
 - 10 of 21 measures on commercial scorecard do not include members at >65 years
 - Prescription data is required for 6 more measures
 - Two year time lag will affect this and all subsequent scorecard publications

Medicare Data and Measures (2 of 3)

Measure	NQF#	Rx component
PCMH_CAHPS	0005	
Breast cancer screening	2372	
Follow up after hospitalization for mental illness, 7 & 30 days	0576	
Plan all-cause readmission	1768	
Adult major depressive disorder (MDD): Coordination of care of patients with specific co-morbid conditions	PQRS 325	
Initiation and Engagement of Alcohol and Other Drug Dependence Treatment	0004	?
DM: HbA1c Testing	0057	✓
Anti-Depressant Medication Management	0105	✓
Annual monitoring for persistent medications (roll-up)	2371	✓
DM: Eye exam	0055	✓
DM: medical attention for nephropathy	0062	✓

Medicare Data and Measures (3 of 3)

- Options?
 - Publish Medicare scores that are 2+ years old
 - Publish only measures that don't need prescription data
 - Add measures relevant to Medicare population that don't require pharmacy data
 - Other ideas?

Discussion?

Public Comment Response

Public Comment (1 of 2)

- Council received proposed response to public comments for review by 9/14
- Most feedback concerned risk adjustment
- Council suggestions:
 - Rohit:

“While we further agree that risk adjustment is an important consideration in quality measurement, the vast majority of the measures that have been selected for the Scorecard do not include risk adjustment in their calculation, as determined by the national guidelines and standards of the NCQA and NQF. As a result we are only providing risk adjustment for those measures that incorporate it in the measure specification, as written by the endorsing national organizations.”

Public Comment (2 of 2)

- Susan Kelley recommendations -- address:
 - Why only two measures were selected that include risk adjustment?
 - Was the issue of risk adjustment focused on and fully vetted?
 - Have other states used risk adjusted measures and to what effect?
 - Can the issue of risk adjustment be revisited?

Next steps

Next Steps (1 of 1)

- Continue measure construction- integrate attribution with measure results
- Finalize provider lists
- Continue user interface development
 - Work with presentation subgroup

Endorsement and Alignment Status

Looking Ahead...

Review Endorsement Status and National Alignment

- National Quality Forum
- Quality Payment Program
- CQMC



Explore Specialty Measure Sets

- Cardiology
- Rheumatology
- Orthopedics
- Others?

Core Measures Alignment – QPP MIPS



Overall MIPS Alignment:

21/31 Core Measures
68% Alignment
65% Alignment in 2017

When removing custom measures (2):

21/29 Core Measures
72% Alignment
69% Alignment in 2017

Changes from 2017:

- (-) Imaging for Low Back Pain - 0052
- (+) Immunizations for Adolescents - 1407
- (+) Developmental Screening in First Three Years of Life - 1448

#	Core Measure Set	NQF	QPP-MIPS
Consumer Engagement			
1	PCMH – CAHPS measure	0005	✓
Care Coordination			
2	Plan all-cause readmission	1768	
3	Annual monitoring for persistent medications (roll-up)	2371	
Prevention			
4	Breast cancer screening	2372	✓
5	Cervical cancer screening	0032	✓
6	Chlamydia screening in women	0033	✓
7	Colorectal Cancer Screening	0034	✓
8	Adolescent female immunizations HPV/Immunizations for Adolescents	1959/1407	✓
9	Weight assessment and counseling for nutrition and physical activity for children/adolescents	0024	✓
10	Preventative care and screening: BMI screening and follow up	0421	✓
11	Developmental screening in the first three years of life	1448	✓
12	Well-child visits in the first 15 months of life	1392	
13	Adolescent well-care visits		
14	Tobacco use screening and cessation intervention	0028	✓
15	Prenatal Care & Postpartum care***	1517	
16	Screening for clinical depression and follow-up plan	418	✓
17	Behavioral health screening (pediatric, Medicaid only, custom measure)		
Acute & Chronic Care			
18	Medication management for people w/ asthma	1799	✓
19	DM: Hemoglobin A1c Poor Control (>9%)	0059	✓
20	DM: HbA1c Testing**	0057	
21	DM: Diabetes eye exam	0055	✓
22	DM: Diabetes: medical attention for nephropathy	0062	✓
23	HTN: Controlling high blood pressure	0018	✓
24	Use of imaging studies for low back pain	0052	✗
25	Avoidance of antibiotic treatment in adults with acute bronchitis	0058	✓
26	Appr. treatment for children with upper respiratory infection	0069	✓
Behavioral Health			
27	Follow-up care for children prescribed ADHD medication	0108	✓
28	Metabolic Monitoring for Children and Adolescents on Antipsychotics (pediatric, Medicaid only, custom measure)	2800	
29	Depression Remission at 12 Twelve Months	0710	✓
30	Depression Remission at 12 months – Progress Towards Remission	1885	
31	Child & Adlscnt MDD: Suicide Risk Assessment	1365	✓

Core Measures Alignment – CQMC Pediatric

Changes from 2017:

(+) Immunizations for Adolescents – 1407

#	Core Measure Set	NQF	ACO	Steward	Pediatric?	CQMC Pediatric Measures
Prevention						
6	Chlamydia screening in women	0033		NCQA		✓
8	Adolescent female immunizations HPV/Immunizations for Adolescents	1959/1407		NCQA	✓	✓
9	Weight assessment and counseling for nutrition and physical activity for children/adolescents	0024		NCQA	✓	✓
11	Developmental screening in the first three years of life	1448		OHSU	✓	✓
12	Well-child visits in the first 15 months of life	1392		NCQA	✓	
13	Adolescent well-care visits			NCQA	✓	
17	Behavioral health screening (pediatric, Medicaid only, custom measure)			Custom	✓	
Acute & Chronic Care						
18	Medication management for people w/ asthma	1799		NCQA		✓
26	Appr. treatment for children with upper respiratory infection	0069		NCQA	✓	✓
Behavioral Health						
27	Follow-up care for children prescribed ADHD medication	0108		NCQA	✓	
28	Metabolic Monitoring for Children and Adolescents on Antipsychotics (pediatric, Medicaid only, custom measure)	2800			✓	
31	Child & Adlsct MDD: Suicide Risk Assessment	1365		AMA/ PCPI	✓	

Core Measures Alignment – CQMC ACO/PC

Changes from 2017:

NONE

#	Core Measure Set	CQMC ACO/PC Measures
Consumer Engagement		
1	PCMH – CAHPS measure	✓
Care Coordination		
2	Plan all-cause readmission	
3	Annual monitoring for persistent medications (roll-up)	
Prevention		
4	Breast cancer screening	✓
5	Cervical cancer screening	✓
6	Chlamydia screening in women	
7	Colorectal Cancer Screening	✓
8	Adolescent female immunizations HPV	
9	Weight assessment and counseling for nutrition and physical activity for children/adolescents	
10	Preventative care and screening: BMI screening and follow up	✓
11	Developmental screening in the first three years of life	
12	Well-child visits in the first 15 months of life	
13	Adolescent well-care visits	
14	Tobacco use screening and cessation intervention	✓
15	Prenatal Care & Postpartum care***	
16	Screening for clinical depression and follow-up plan	
17	Behavioral health screening (pediatric, Medicaid only, custom measure)	
Acute & Chronic Care		
18	Medication management for people w/ asthma	✓
19	DM: Hemoglobin A1c Poor Control (>9%)	✓
20	DM: HbA1c Testing**	✓
21	DM: Diabetes eye exam	✓
22	DM: Diabetes: medical attention for nephropathy	✓
23	HTN: Controlling high blood pressure	✓
24	Use of imaging studies for low back pain	✓
25	Avoidance of antibiotic treatment in adults with acute bronchitis	✓
26	Appr. treatment for children with upper respiratory infection	
Behavioral Health		
27	Follow-up care for children prescribed ADHD medication	
28	Metabolic Monitoring for Children and Adolescents on Antipsychotics (pediatric, Medicaid only, custom measure)	
29	Depression Remission at 12 Twelve Months	✓
30	Depression Remission at 12 months – Progress Towards Remission	✓
31	Child & Adlscnt MDD: Suicide Risk Assessment	

Core Measures Alignment – NQF Endorsement Status



#	Core Measure Set	NQF	ACO	Steward	NQF Endorsement Status	Date of Update
Consumer Engagement						
1	PCMH – CAHPS measure	0005		NCQA	✓	1/7/15
Care Coordination						
2	Plan all-cause readmission	1768		NCQA	✓	12/23/14
Prevention						
4	Breast cancer screening	2372	20	NCQA	✓	6/10/16
5	Cervical cancer screening	0032		NCQA	✓	1/17/17
6	Chlamydia screening in women	0033		NCQA	✓	1/9/18
7	Colorectal Cancer Screening	0034	19	NCQA	✓	6/6/18
8	Adolescent female immunizations HPV/Immunizations for Adolescents	1959/1407		NCQA	✓	12/23/14
9	Weight assessment and counseling for nutrition and physical activity for children/adolescents	0024		NCQA	✓	6/6/18
10	Preventative care and screening: BMI screening and follow up	0421	16	CMMC	✓	1/17/17
12	Well-child visits in the first 15 months of life	1392		NCQA	✓	9/2/15
13	Adolescent well-care visits			NCQA		
14	Tobacco use screening and cessation intervention	0028	17	AMA/ PCPI	✓	6/28/17
16	Screening for clinical depression and follow-up plan	418	18	CMS	✓	6/28/17
Acute & Chronic Care						
19	DM: Hemoglobin A1c Poor Control (>9%)	0059	27	NCQA	✓	3/28/17
20	DM: HbA1c Testing**	0057		NCQA	✓	3/28/17
21	DM: Diabetes eye exam	0055	41	NCQA	✓	6/10/16
22	DM: Diabetes: medical attention for nephropathy	0062		NCQA	✓	4/4/16
23	HTN: Controlling high blood pressure	0018	28	NCQA	✓	4/3/13
25	Avoidance of antibiotic treatment in adults with acute bronchitis	0058		NCQA	✓	4/4/16
26	Appr. treatment for children with upper respiratory infection	0069		NCQA	✓	3/3/16
Behavioral Health						
27	Follow-up care for children prescribed ADHD medication	0108		NCQA	✓	6/28/17
28	Metabolic Monitoring for Children and Adolescents on Antipsychotics (pediatric, Medicaid only, custom measure)	2800			✓	5/4/16
29	Depression Remission at 12 Twelve Months	0710	40	MNCM	✓	3/16/15
30	Depression Remission at 12 months – Progress Towards Remission	1885		MNCM	✓	10/26/16
31	Child & Adlscnt MDD: Suicide Risk Assessment	1365		AMA/ PCPI	✓	8/24/17

Core Measures Alignment – NQF Endorsement Status

#	Core Measure Set	NQF	ACO	Steward	NQF Endorsement Status	Date of Update
Care Coordination						
3	Annual monitoring for persistent medications (roll-up)	2371		NCQA	☒	6/6/18
Prevention						
11	Developmental screening in the first three years of life	1448		OHSU	☒	5/31/17
13	Adolescent well-care visits			NCQA	⦿	
15	Prenatal Care & Postpartum care***	1517		NCQA	☒	10/25/16
17	Behavioral health screening (pediatric, Medicaid only, custom measure)			Custom	⦿	
Acute & Chronic Care						
18	Medication management for people w/ asthma	1799		NCQA	☒	8/3/16
24	Use of imaging studies for low back pain	0052		NCQA	☒	5/1/17

Changes from 2017:

(-) Annual monitoring for persistent medications - 2371

Annual Monitoring for Persistent Medications– NQF Endorsement Status

Measure Description: This measure assesses the percentage of patients 18 years of age and older who received a least 180 treatment days of ambulatory medication therapy for a select therapeutic agent during the measurement year and at least one therapeutic monitoring event for the therapeutic agent in the measurement year.

Complete description can be found [here](#)

NCQA: NCQA voluntarily retired #2371: Annual Monitoring for Patients on Persistent Medications (MPM) from NQF endorsement. This measure is based on the HEDIS version of the measure, and we are currently considering a range of options related to this measurement area.

Discussion:

- Research shows no other similar measure
- Why was it originally chosen to be in the core set?
 - Do those reasons still apply?
- Do we want to keep it in the core set?

Reporting Measures

#	Reporting Measure Set	NQF	Steward	QPP-MIPS	NQF Endorsement Status	Date of Update	CQMC
Consumer Engagement							
1	30 day readmission		MMDLN				
Prevention							
2	Non-recommended Cervical Cancer Screening in Adolescent Female		NCQA	✓			✓
3	Well-child visits in the third, fourth, fifth and sixth years of life (Medicaid only)	1516	NCQA		✓	9/2/2015	✓
4	Oral Evaluation, Dental Services (Medicaid only)	2517	ADA		✓	6/6/2018	
5	Long Acting Reversible Contraception (LARC)	2904	OPA		✓	1/28/2018	
Acute and Chronic Care							
6	Cardiac stress imaging: Testing in asymptomatic low risk patients	0672	ACC		✓	6/29/2015	
Behavioral Health							
7	Adult major depressive disorder (MDD): Coordination of care of patients with specific co-morbid conditions		APA	✓			
8	Anti-Depressant Medication Management	0105	NCQA	✓	✓	3/28/2017	
9	Initiation and Engagement of Alcohol and Other Drug Dependence Treatment	0004	NCQA	✓	✓	2/8/2016	
10	Follow up after hospitalization for mental illness, 7 & 30 days	0576	NCQA	✓	✓	7/28/2017	

Changes from 2017:

CQMC – NONE

MIPS – NONE

NQF – NONE

Development Measures

#	Development Set	NQF	Steward	QPP-MIPS	NQF Endorsement Status	Date of Update	CQMC
Care Coordination							
1	ASC admissions: chronic obstructive pulmonary disease (COPD) or asthma in older adults	0275	AHRQ		✓	8/3/2016	
2	ASC: heart failure (HF)	0277	AHRQ		✓	3/9/2017	
3	All-cause unplanned admission for MCC		CMS				
4	All-cause unplanned admissions for patients with heart failure		CMS				
5	All-cause unplanned admissions for patients with DM		CMS				
6	Asthma in younger adults admission rate	0283	AHRQ		✓	8/3/2016	
7	Preventable hospitalization composite (NCQA)/Ambulatory Care Sensitive Condition composite (AHRQ)		NCQA/ AHRQ				
8	Asthma admission rate (child)	0728			✓	6/10/2016	
9	Pediatric ambulatory care sensitive condition admission composite		Anthem				
10	ED Use (observed to expected) – New		NCQA				
11	Annual % asthma patients (2-20) with 1 or more asthma-related ED visits						
Prevention							
12	Oral health: Primary Caries Prevention	1419	None				
Acute and Chronic Care							
13	Gap in HIV medical visits	2080	HRSA		✓	7/13/2017	
14	HIV/AIDS: Screening for Chlamydia, Gonorrhea, and Syphilis	0409	NCQA		✓	6/13/2016	
15	HIV viral load suppression	2082	HRSA		✓	7/13/2017	
Acute and Chronic Care							
16	Unhealthy Alcohol Use – Screening	2152	AMA/ PCPI		✓	1/11/2017	

Changes from 2017:

CQMC – NONE

MIPS – NONE

NQF – NONE

Adjourn