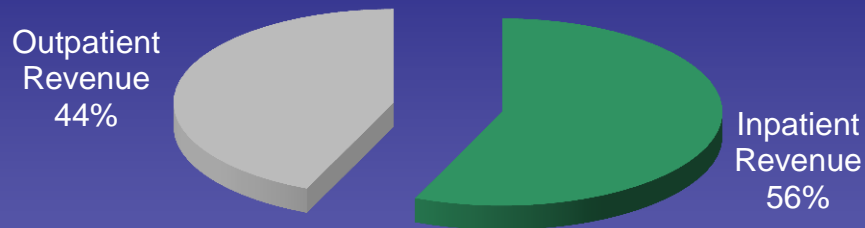


SAINT FRANCIS HOSPITAL AND MEDICAL CENTER

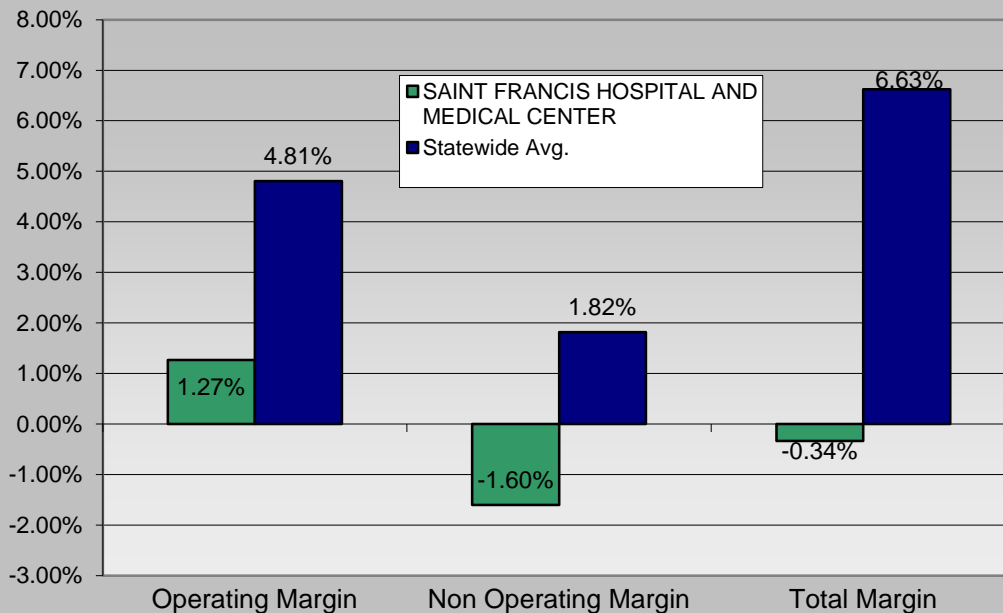
Gross Revenues, FY 2012



Inpatient Revenue	\$	992,068,952
Outpatient Revenue	\$	765,589,378
Total Gross Revenue	\$	1,757,658,330

SAINT FRANCIS HOSPITAL AND MEDICAL CENTER

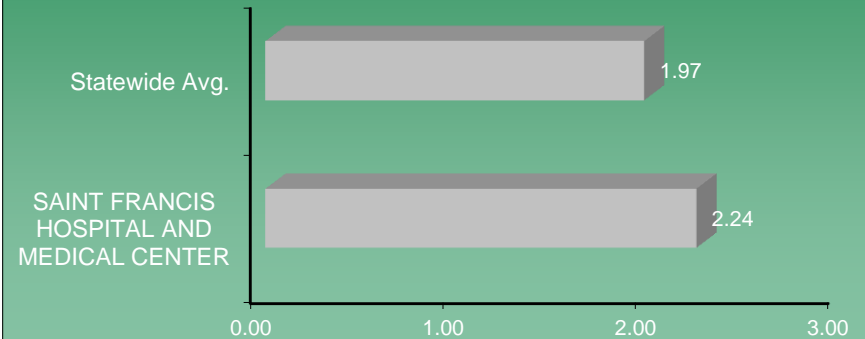
Margins, FY 2012



Source: Department of Public Health, Office of Health Care Access, Hospital Reporting System

Utilization Measures	FY 2012	
	SAINT FRANCIS HOSPITAL AND MEDICAL CENTER	Statewide Avg.
Discharges	32,111	418,068
Patient Days	157,534	2,034,351
Avg Length of Stay	4.9	4.9
Staffed Beds	595	6,875
Occupancy of Staffed Beds	72.5%	81.1%
Average Daily Census	432	5,574
Total Case Mix Index	1.47	1.32

Current Ratio FY 2012



Debt Service Coverage Ratio FY 2012

