



**Outpatient Surgical Facilities
in Connecticut**

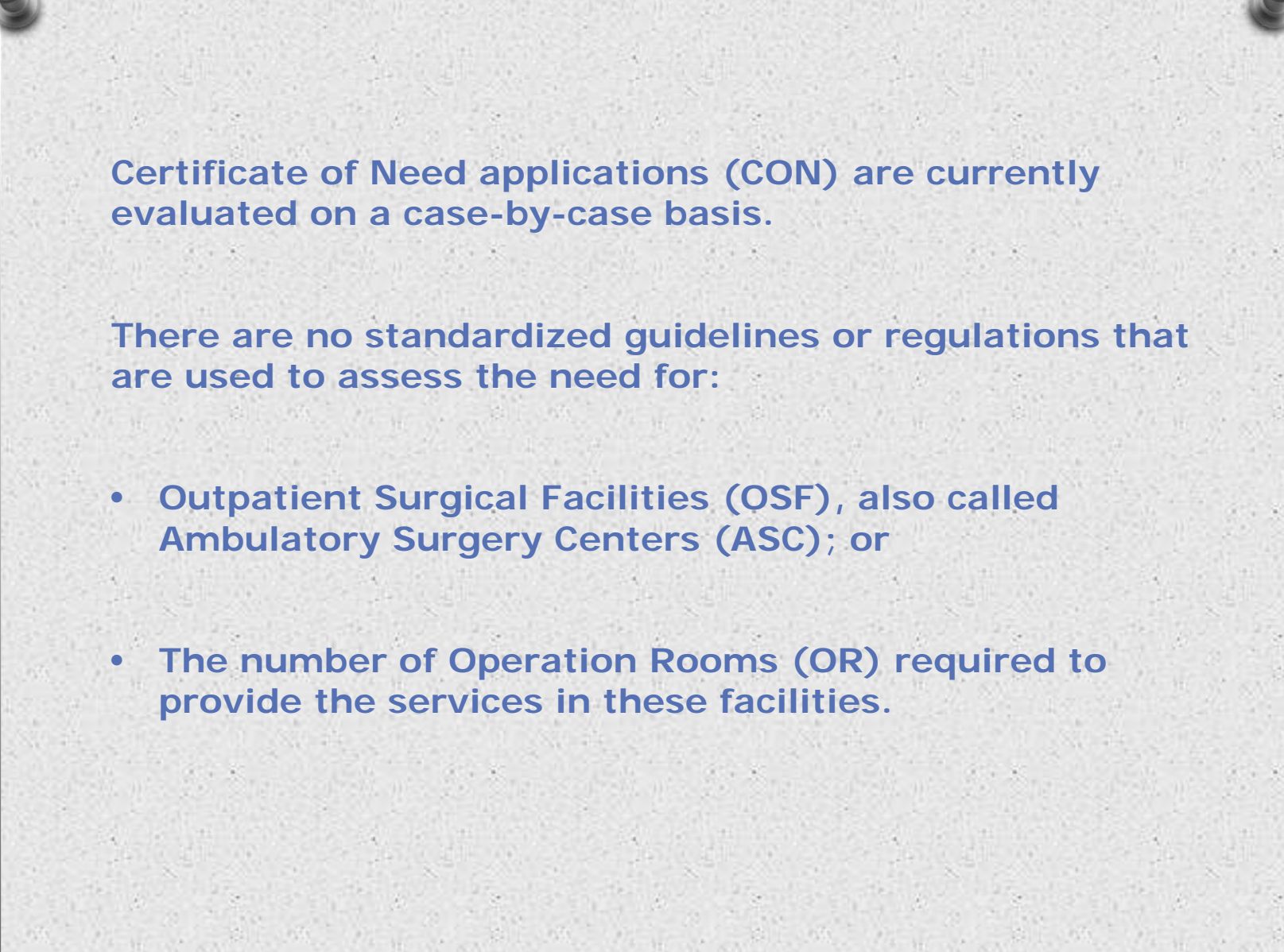
May 11, 2011

Department of Public Health, Office of Health Care Access

Connecticut General Statutes § Section 19a-634 requires OHCA to establish and maintain a state-wide health care facilities and services plan.

§ Section 19a-638(a) (5) requires a Certificate of Need for:

The establishment of an outpatient surgical facility, as defined in section 19a-493b, or as established by a short-term acute care general hospital;



Certificate of Need applications (CON) are currently evaluated on a case-by-case basis.

There are no standardized guidelines or regulations that are used to assess the need for:

- **Outpatient Surgical Facilities (OSF), also called Ambulatory Surgery Centers (ASC); or**
- **The number of Operation Rooms (OR) required to provide the services in these facilities.**



OHCA proposes to develop guidelines and regulations to address:

- **Requests for new freestanding OSFs and Hospital satellite OSFs;**
- **Whether single-specialty or multi-specialty proposals must follow identical guidelines and regulations or allow for variation due to the differing scope of services;**
- **The current accessibility to ambulatory surgery;**
- **Any unmet need;**
- **The number of ORs appropriate by facility or in the region; and**
- **Projected future demand for additional OSFs or ORS.**

Existing OSFs Standards:

OHCA reviewed the State Health Plans of a majority of the states that have CON statutes.

Many of the states have utilized common elements and incorporate:

- Fixed Planning areas
- Target Utilization Rates
- Distance from an Acute Care Hospital
- Requirements for Number of Operating Rooms

Present Number of OSFs in Connecticut

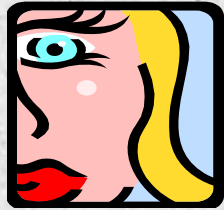
Statewide Totals*

Multispecialty Freestanding:	17
Multispecialty Hospital Satellite:	8
Single Specialty Freestanding:	45
Single Specialty Hospital Satellite:	2

**Plus each Acute Care Hospital provides
ambulatory surgery services within or adjacent to
their main campus.**

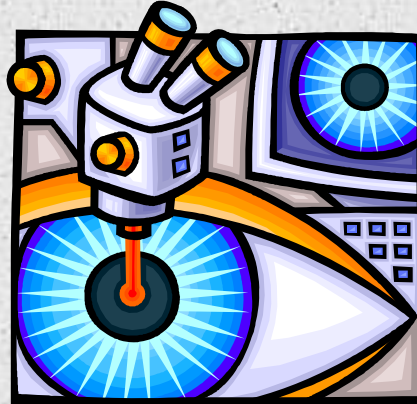
*Sources: Department of Public Health, Licenses for OSFs
Office of Health Care Access, CON Database

Single Specialties



Plastic Surgery

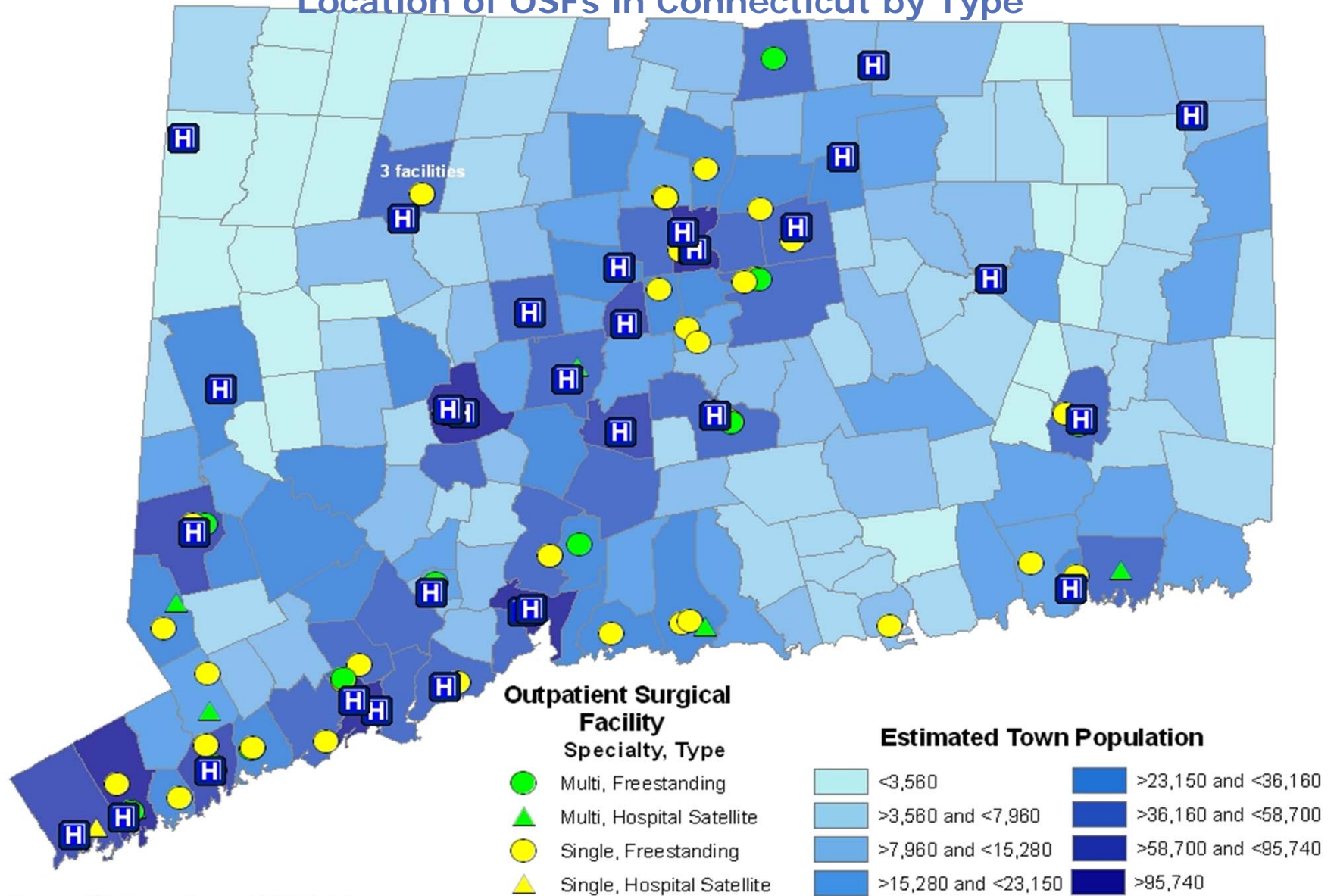
Eye and
LASIK
Surgery



Orthopedic
Surgery

and endoscopy!

Location of OSFs in Connecticut by Type



Source: DPH Licensing and CON Database

Moving Forward:

Issues in need of advice and discussion:

- Service Area
- Capacity
- Optimum Utilization (%)
- Requirements to add a new OSF
- Physician Referral Patterns
- Time and/or Distance from an Acute Care Hospital
- What defines an OR
- Requirements to be met to add additional ORs
- Exceptions