



**Outpatient Surgical Facilities  
in Connecticut**

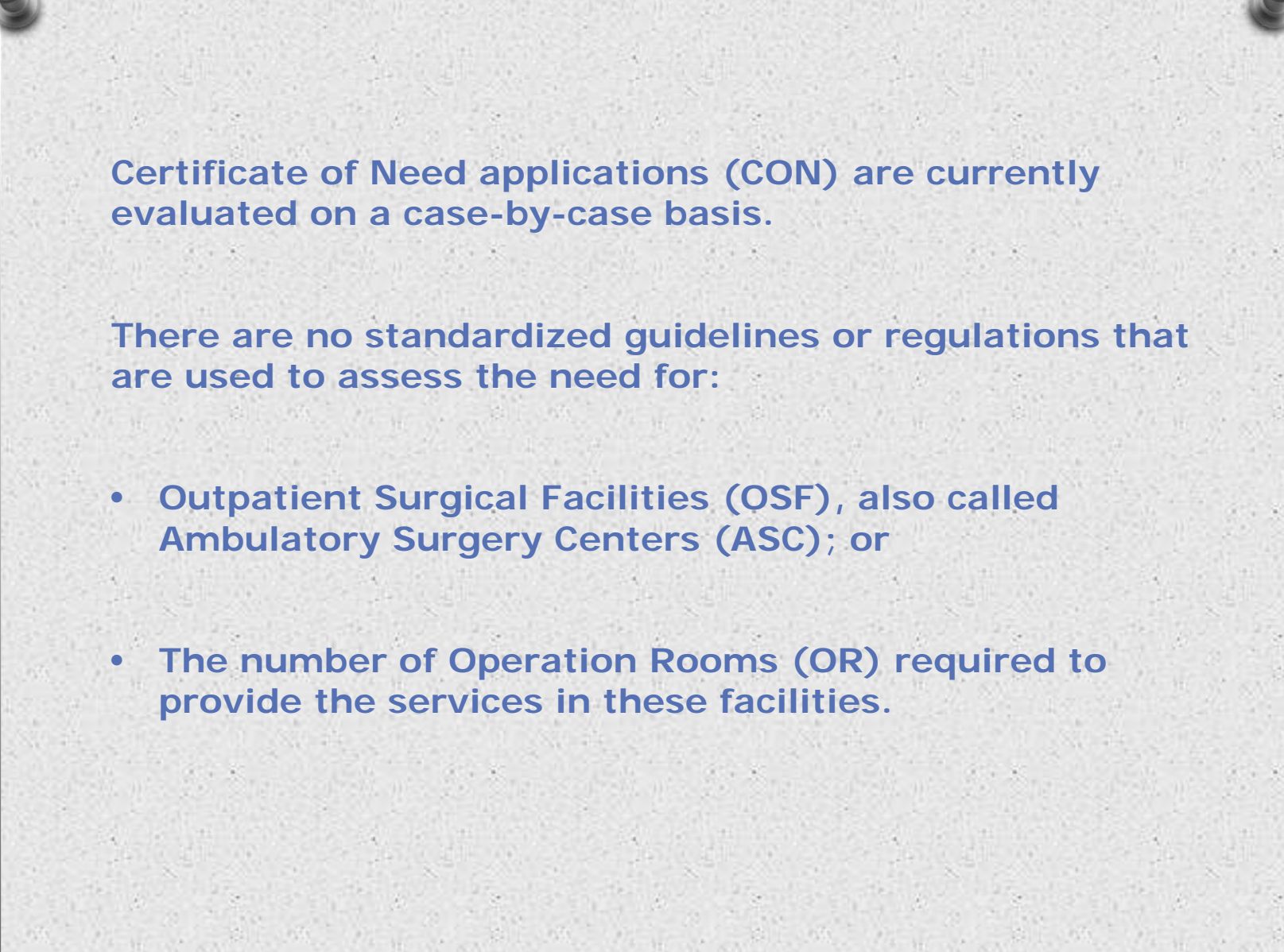
**August 25, 2011**

**Department of Public Health, Office of Health Care Access**

Connecticut General Statutes § Section 19a-634 requires OHCA to establish and maintain a state-wide health care facilities and services plan.

§ Section 19a-638(a) (5) requires a Certificate of Need for:

**The establishment of an outpatient surgical facility, as defined in section 19a-493b, or as established by a short-term acute care general hospital;**



**Certificate of Need applications (CON) are currently evaluated on a case-by-case basis.**

**There are no standardized guidelines or regulations that are used to assess the need for:**

- **Outpatient Surgical Facilities (OSF), also called Ambulatory Surgery Centers (ASC); or**
- **The number of Operation Rooms (OR) required to provide the services in these facilities.**



**OHCA proposes to develop guidelines and regulations to address:**

- **Requests for new freestanding OSFs and Hospital satellite OSFs;**
- **Whether single-specialty or multi-specialty proposals must follow identical guidelines and regulations or allow for variation due to the differing scope of services;**
- **The current accessibility to ambulatory surgery;**
- **Any unmet need;**
- **The number of ORs appropriate by facility or in the region; and**
- **Projected future demand for additional OSFs or ORS.**

## Existing OSFs Standards:

OHCA reviewed the State Health Plans of a majority of the states that have CON statutes.

Many of the states have utilized common elements and incorporate:

- Fixed Planning areas
- Target Utilization Rates
- Distance from an Acute Care Hospital
- Requirements for Number of Operating Rooms

## **Present Number of OSFs in Connecticut**

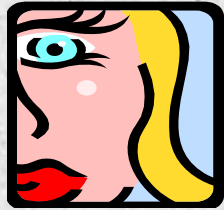
### **Statewide Totals\***

<b>Multispecialty Freestanding:</b>	<b>17</b>
<b>Multispecialty Hospital Satellite:</b>	<b>8</b>
<b>Single Specialty Freestanding:</b>	<b>45</b>
<b>Single Specialty Hospital Satellite:</b>	<b>2</b>

**Plus each Acute Care Hospital provides  
ambulatory surgery services within or adjacent to  
their main campus.**

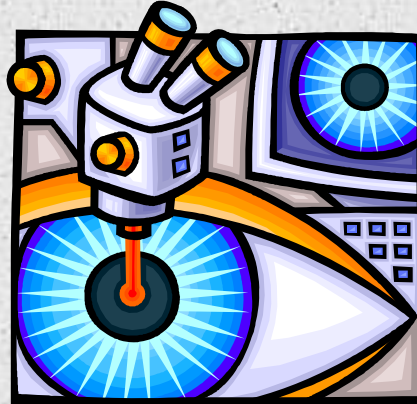
\*Sources: Department of Public Health, Licenses for OSFs  
Office of Health Care Access, CON Database

# Single Specialties



## Plastic Surgery

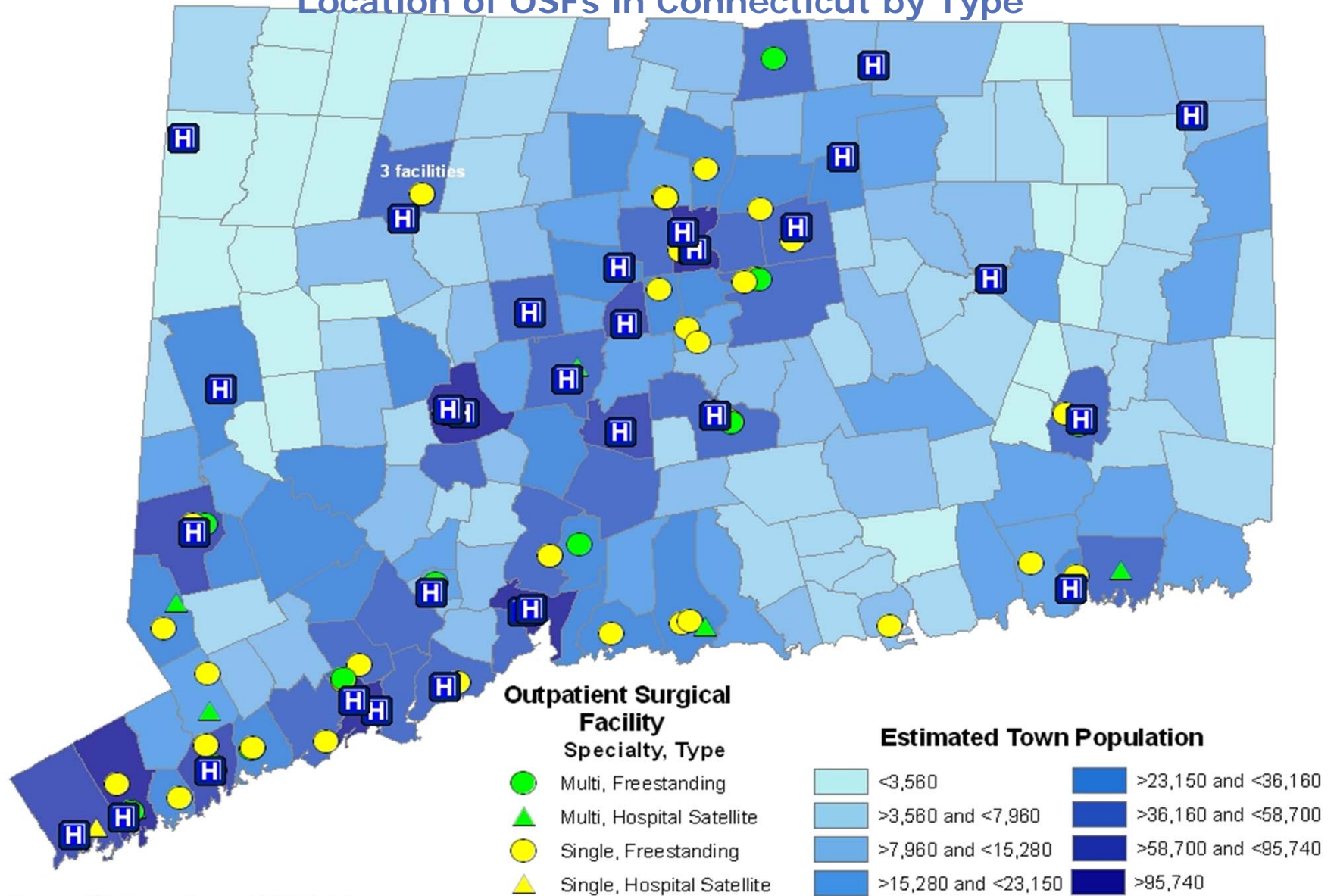
Eye and  
LASIK  
Surgery



Orthopedic  
Surgery

*and endoscopy!*

## Location of OSFs in Connecticut by Type



Source: DPH Licensing and CON Database



## Moving Forward:

### Issues in need of advice and discussion:

- Service Area
- Capacity
- Optimum Utilization (%)
- Requirements to add a new OSF
- Physician Referral Patterns
- Time and/or Distance from an Acute Care Hospital
- What defines an OR
- Requirements to be met to add additional ORs
- Exceptions