



**Connie**

*Connecting People for Better Health*

**Connie Update**  
Jenn Searls, Executive Director

**October 21, 2021**



# 2021: The Year in Review

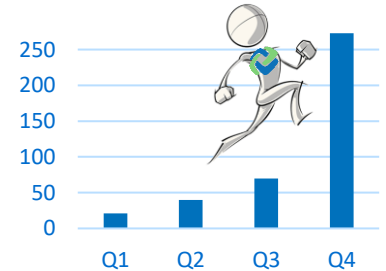
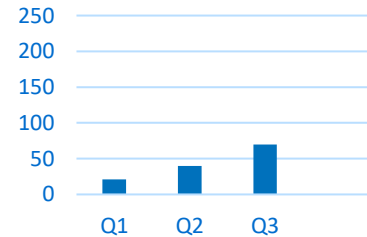
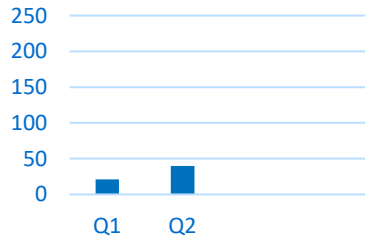
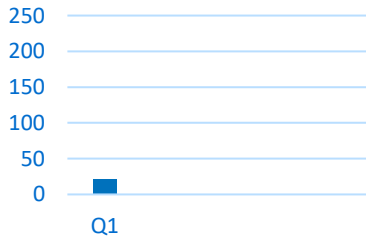
Q1 Oct - Dec	Q2 Jan - Mar	Q3 Apr - Jun	Q4 Jul - Sep
-----------------	-----------------	-----------------	-----------------

- ED hired
- CRISP selected
- Project Notify
- Empanelment & encounter use case
- 21 organizations signed on to Connie

- 4 new staff
- OHS contract signed
- 40 organizations signed on to Connie

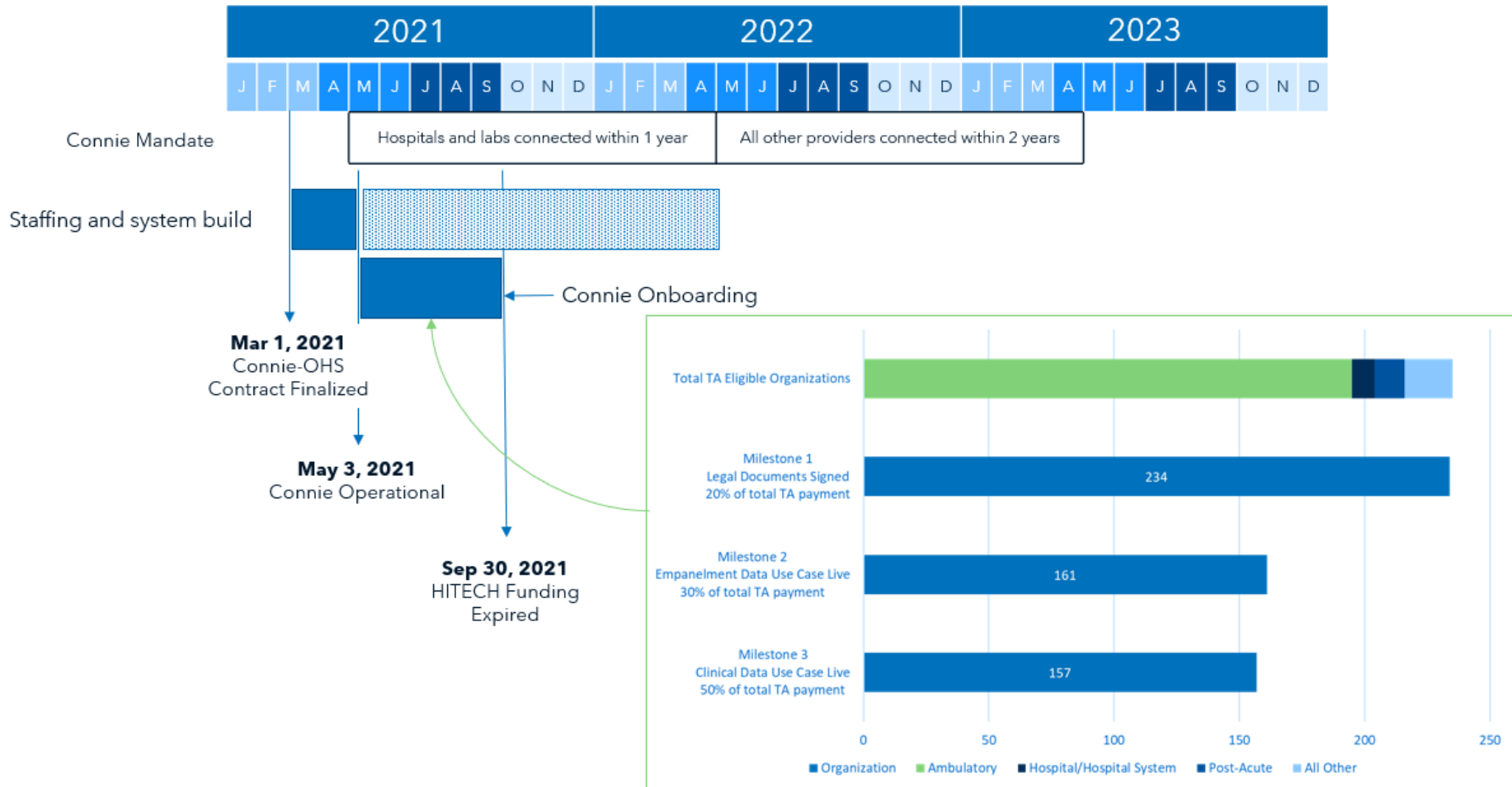
- Connie is operational!
- Connie website
- Opt-out process
- 70 organizations signed on to Connie

- Sustainability plan
- CMS Certification
- 4 new staff
- 273 organizations signed on to Connie
- 1.54M unique patients (*43% of CT population*)

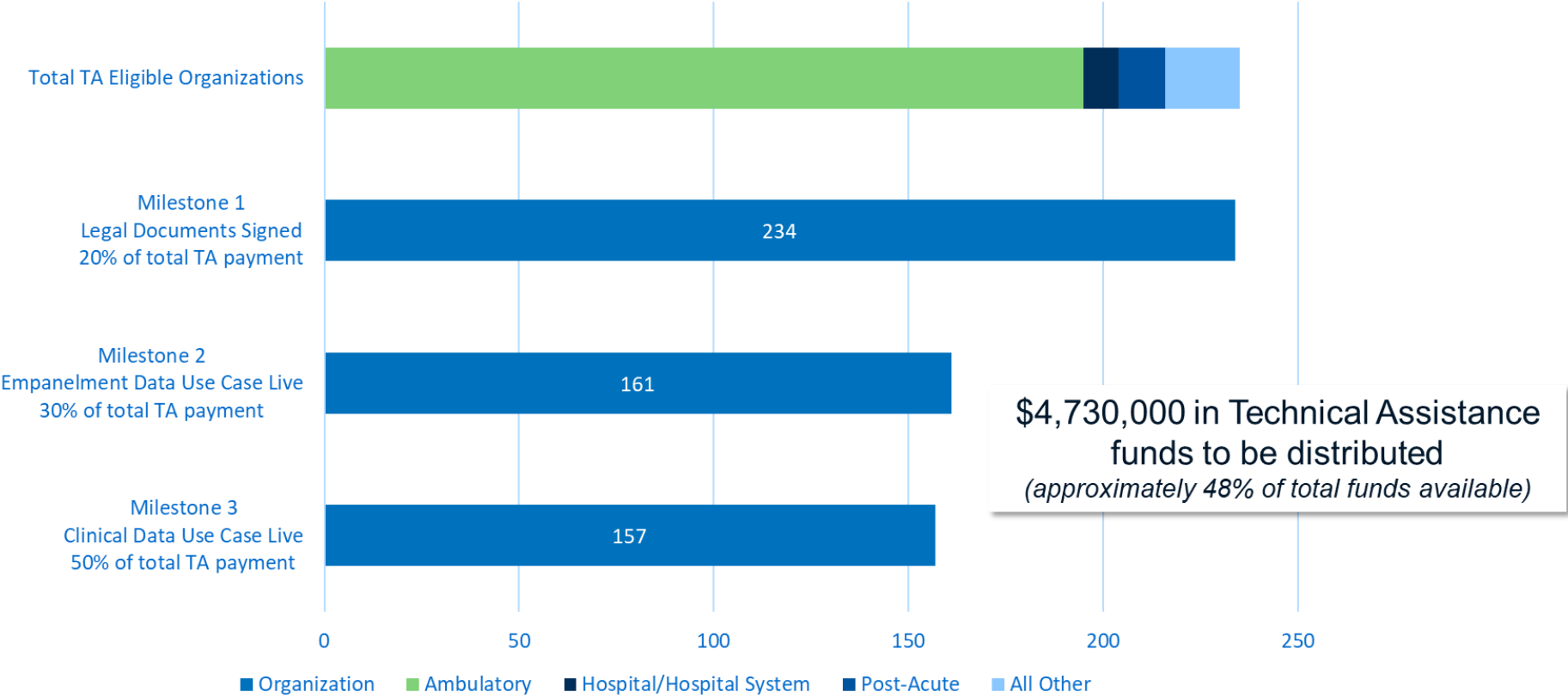


# TA Program





# Technical Assistance Program

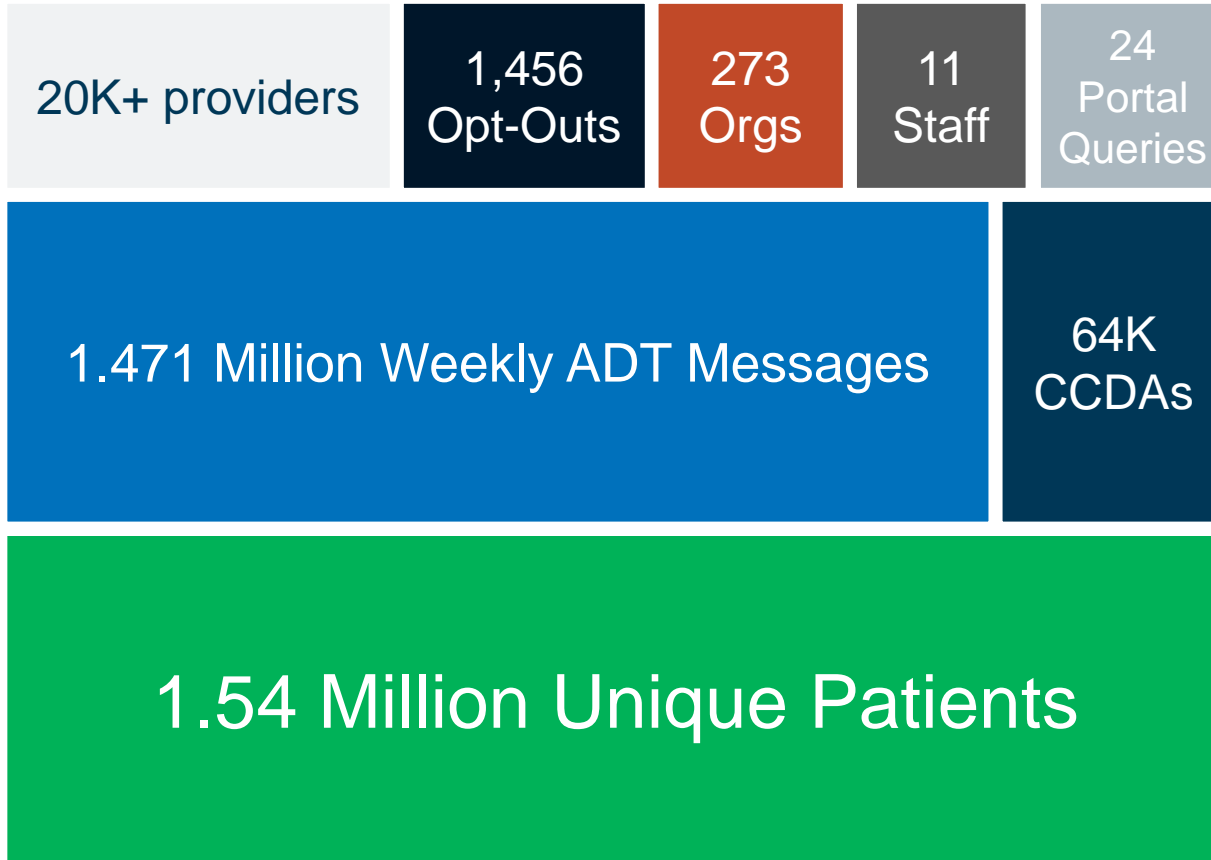


# Current state of connectivity

Data Type	Organizations
Patient panels	102 organizations including SoNE HEALTH
ADT messages	61 organizations including Yale New Haven Health, Hartford Healthcare, UConn Health, Bristol Health, and Sharon Hospital
CCDs	52 organizations including CTHealthLink and Community Connect practices of Yale
Radiology results	2 organizations including Bristol Health and UConn Health
Discharge summaries	1 organization (4 organizations in the pipeline)
Lab results	115 organizations authorized Quest and LabCorp to send results to Connie



# Connie by the numbers





# Looking ahead to 2022

## DDI & Functional Services

### Portal Services

- Clinical Data
- Image Exchange
- PDMP access
- BPMH
- Advance Directives
- Immunizations

### eReferral

### eConsent Enhancements

- Provider mediated
- Patient mediated

### Provider Directory

## Planning Use Cases

### Electronic Case Reporting

### eConsult

### eCQMs

### SDOH data/referral

### Dental health

### DME

### Stroke Registry/Network



# HITAC and Connie



# Connie and HITAC



Questions?

