

*Infection of mosquito feeding on a viremic animal*



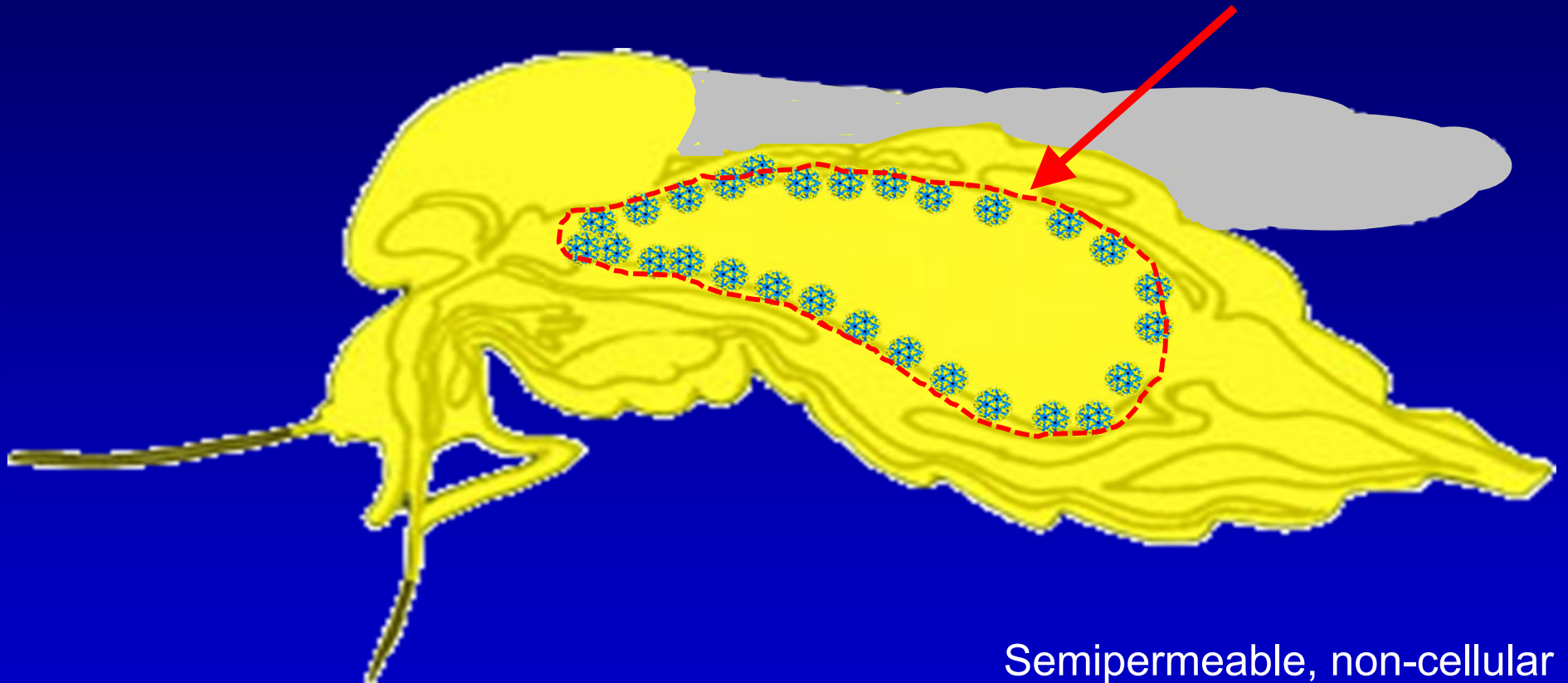
*Virus particles in blood*

*Digestion of blood*



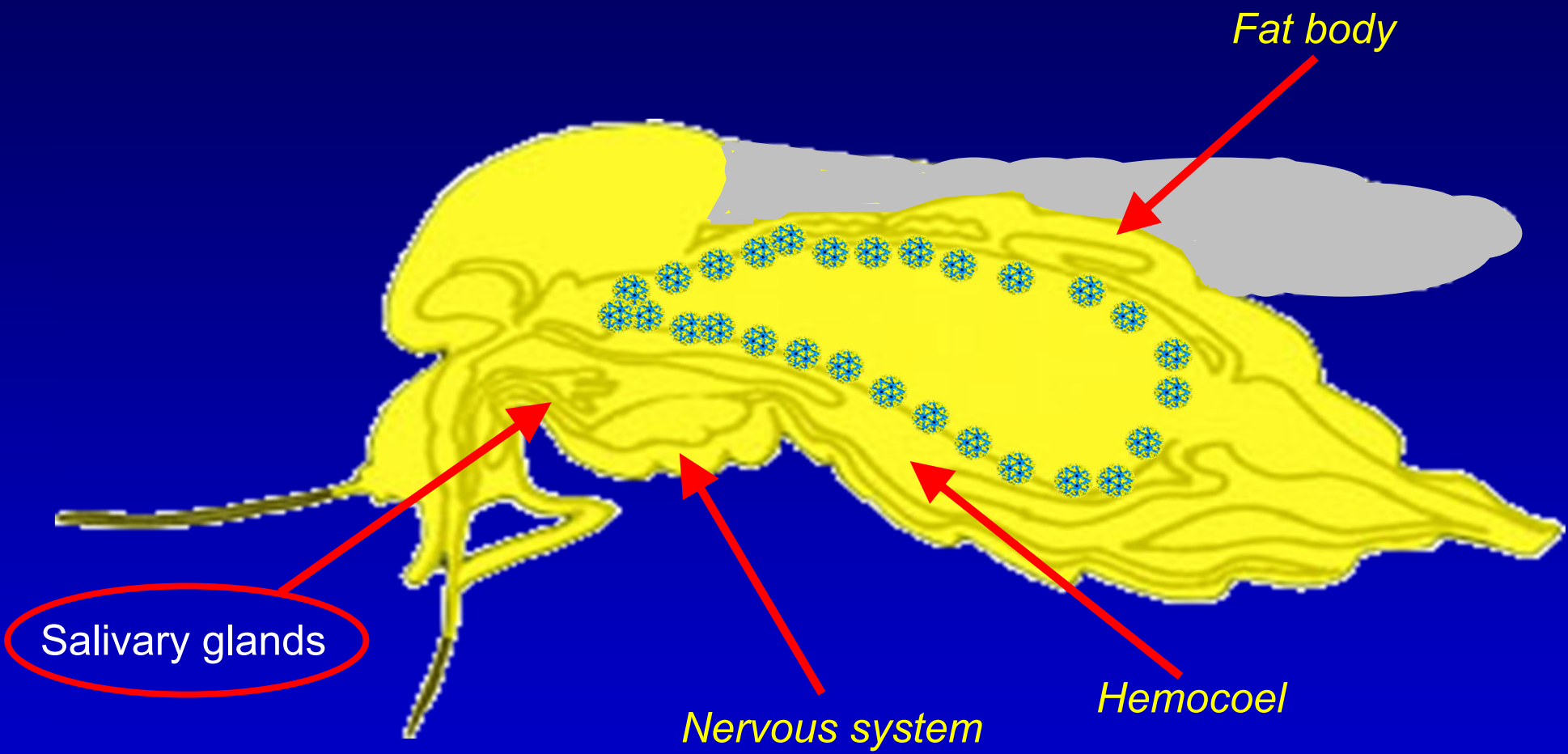
*Spread of virus within midgut*

*Basal lamina membrane*

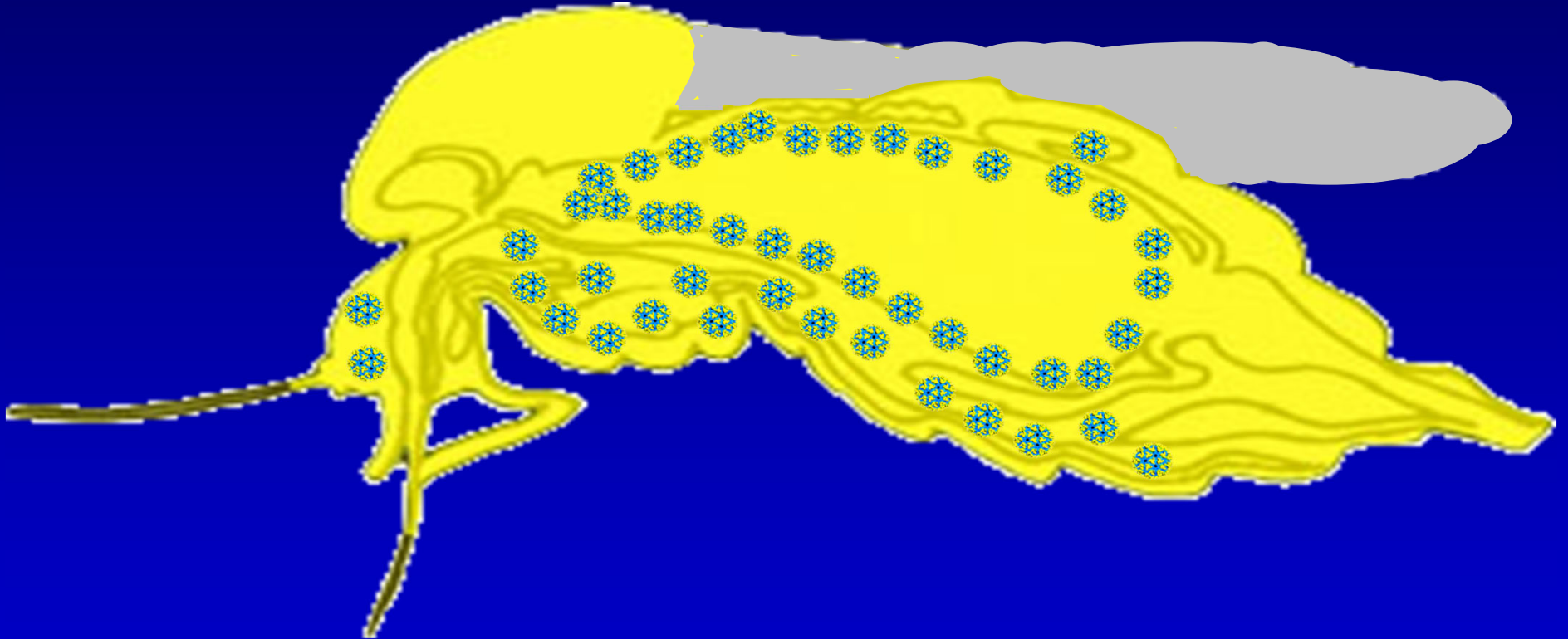


Semipermeable, non-cellular matrix composed of protein

*Dissemination from the midgut into the hemocoel*



*Virus replication in secondary tissues in body*



*Transmission of virus from mosquito to new host*

