

# Connecticut Energy Efficiency Programs

## Overview and Summary of CT State Building Activity

Andy Brydges  
Eversource

Liz Murphy  
UI/SCG/CNG

# Utility Goals in Support of EO1

---

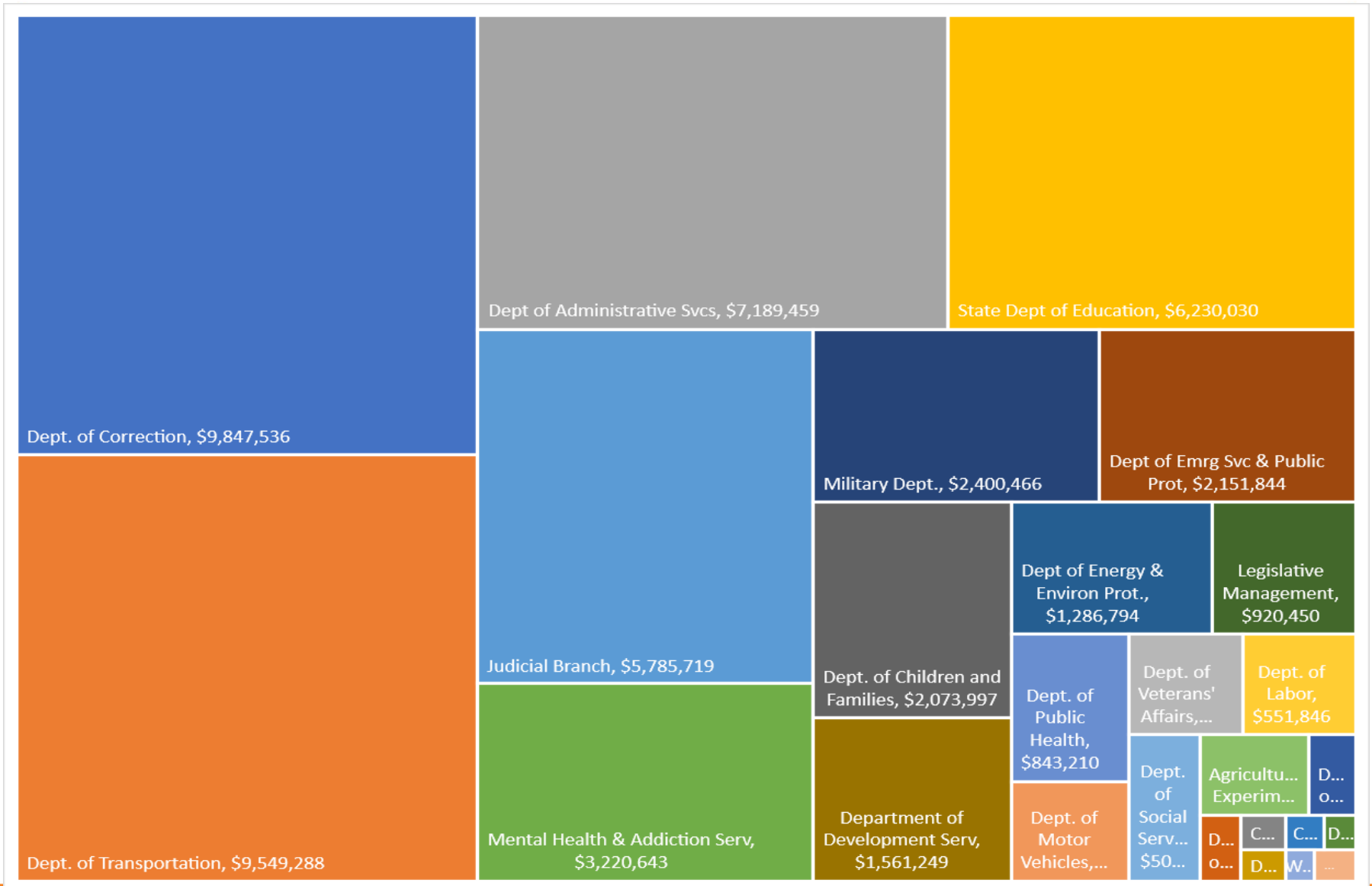
- Create/ensure Agency understanding of utility energy efficiency resources
  - Incentives, technical expertise, financing, etc.
- Integrate utility process with State's project approval process to streamline delivery and *make energy efficiency part of business as usual!*
  - Identify potential projects and develop joint strategy for prioritizing work



Empowering you to make  
smart energy choices

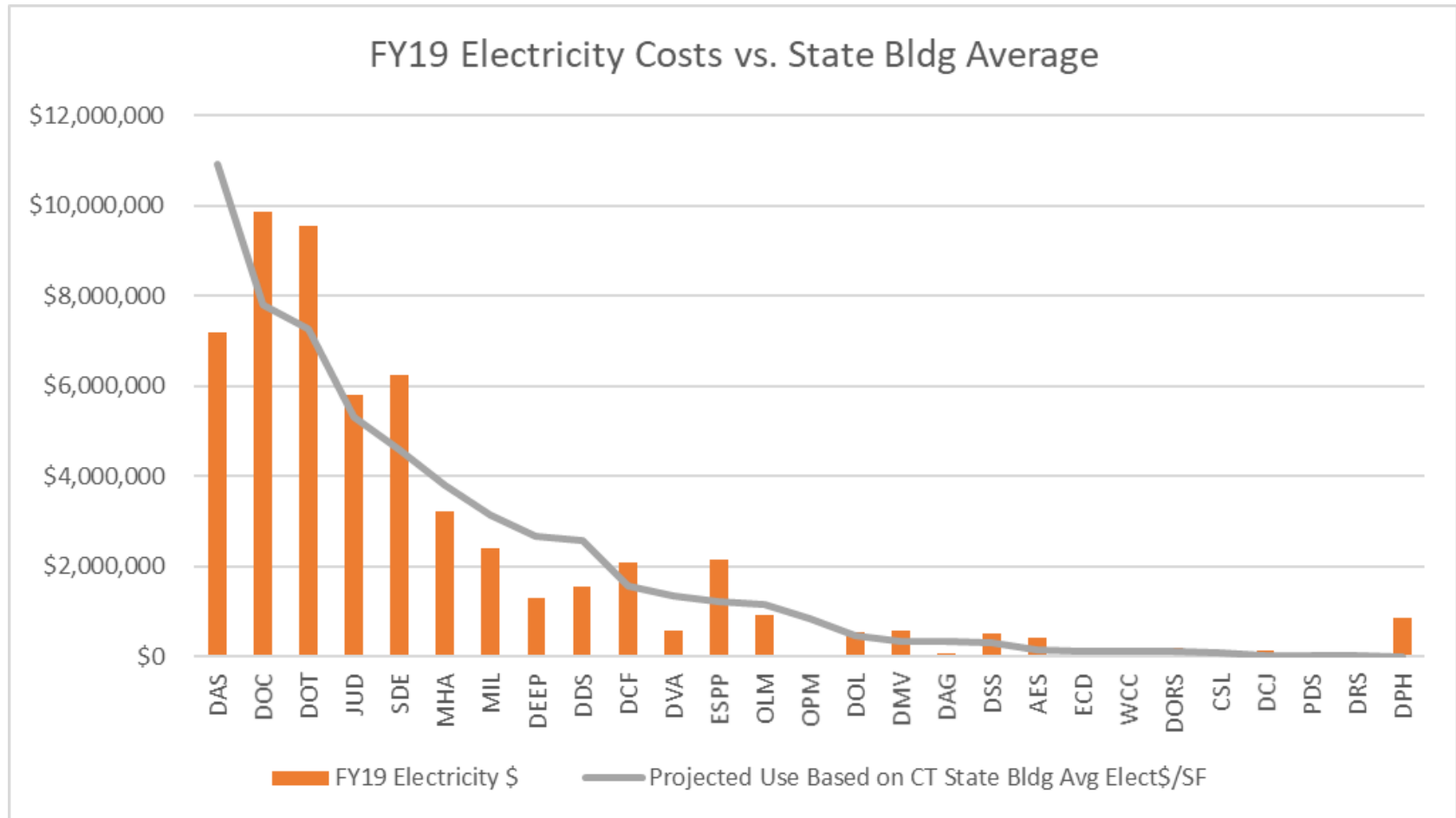
# Summary of State Building Activity

# CT OSC FY19 Electricity (\$56.4M)

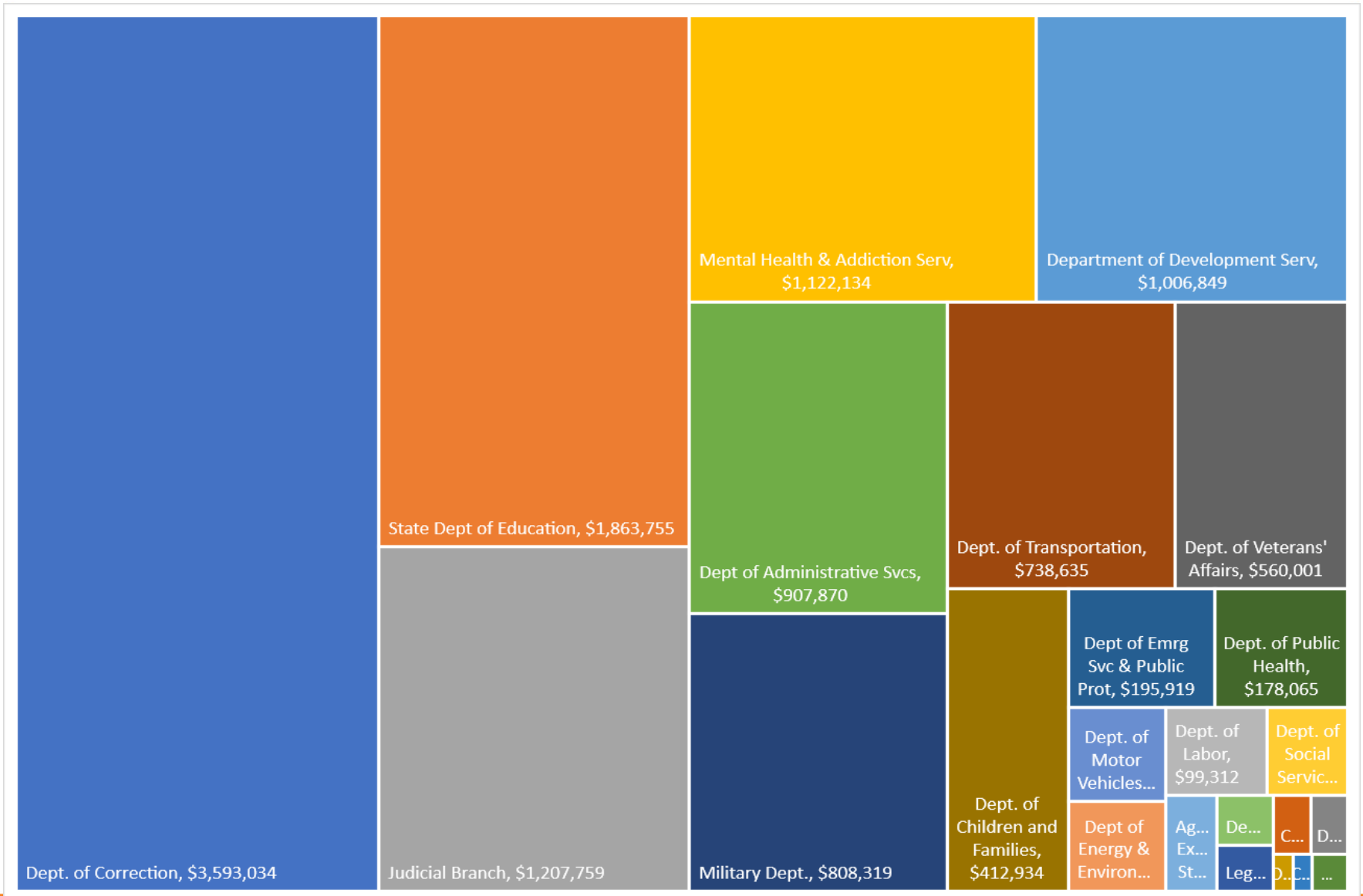


\*Does not include UConn or CSCU

# Electricity Use Intensity by Agency

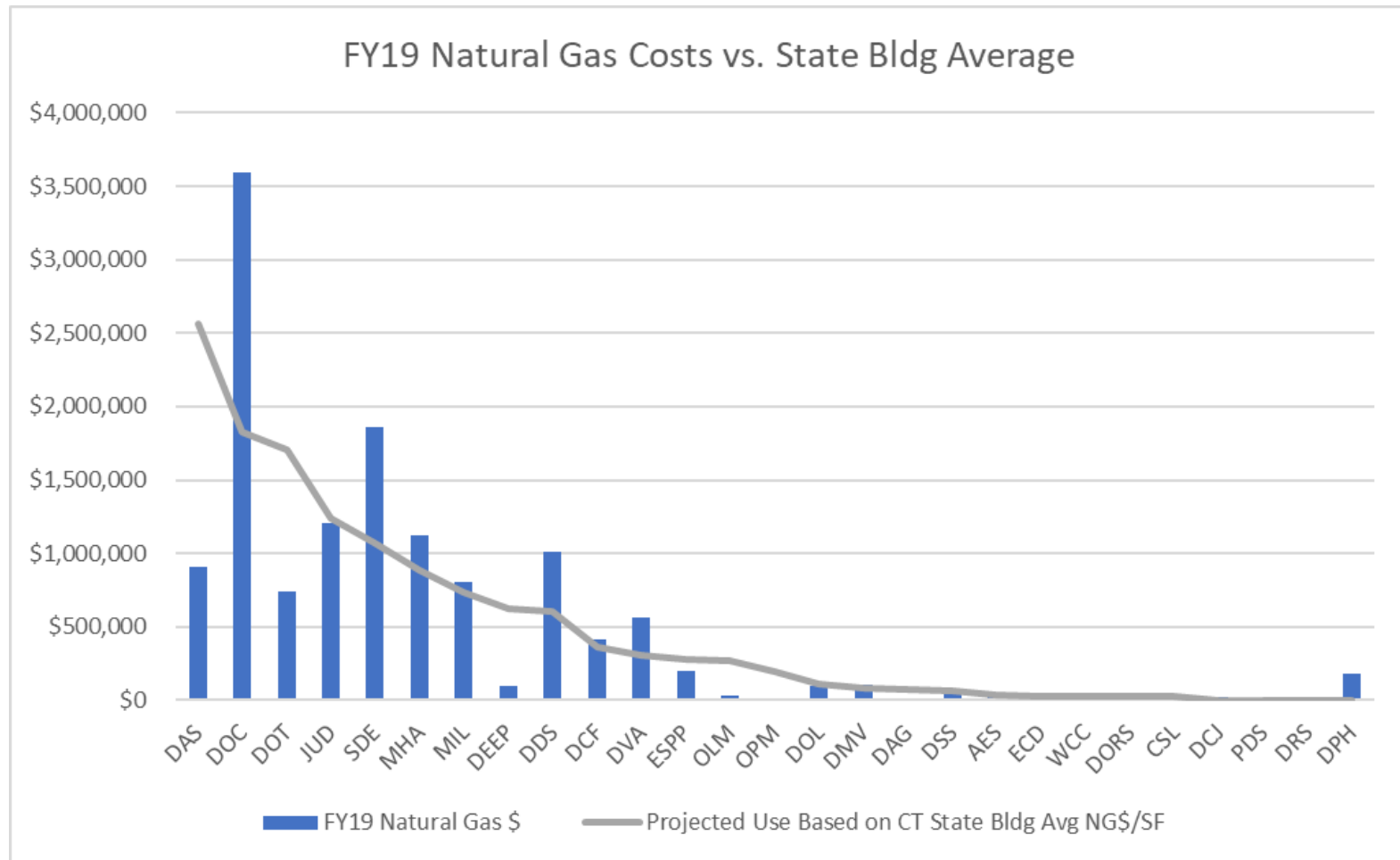


# CT OSC FY19 Natural Gas (\$13.2M)

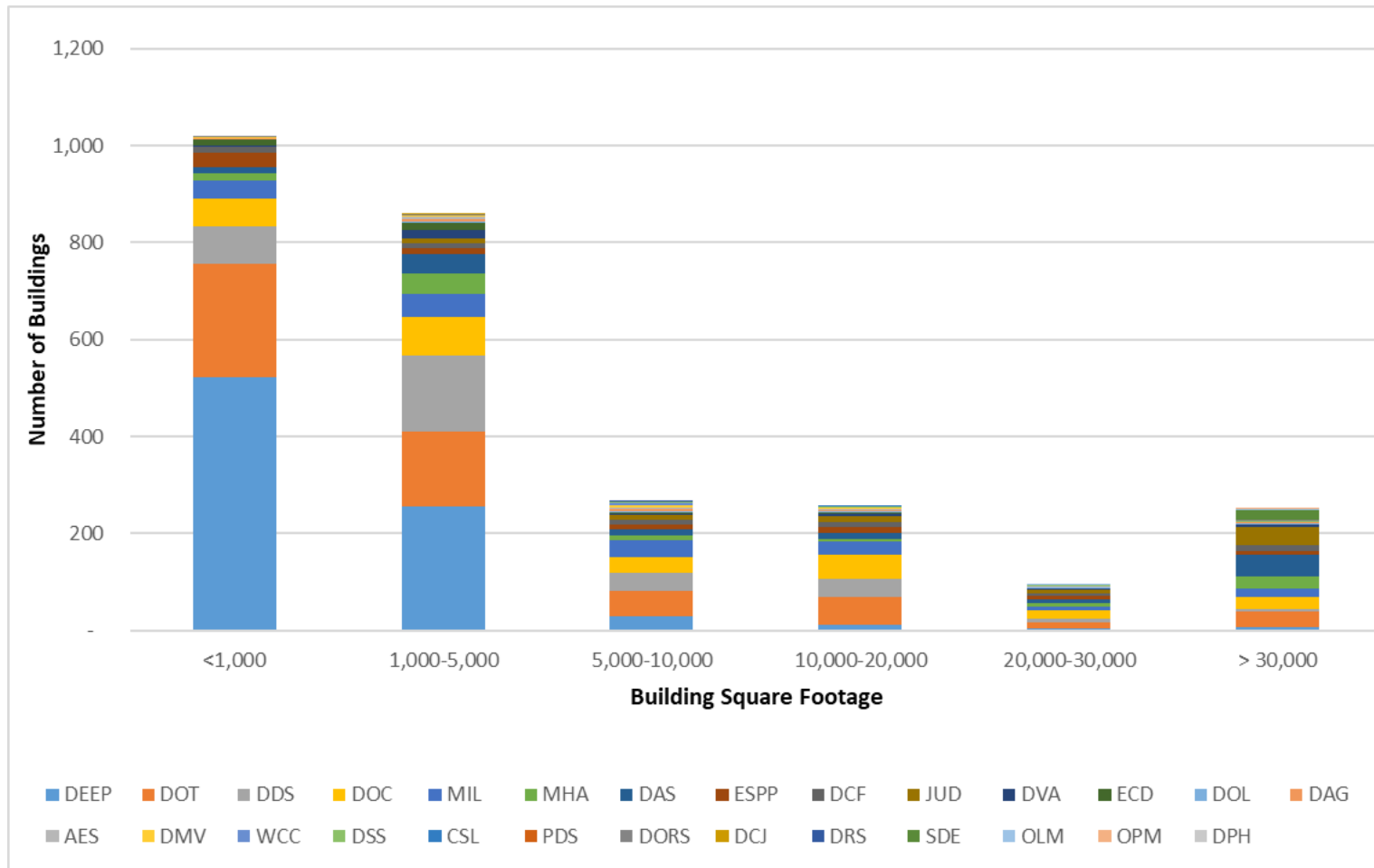


\*Does not include UConn or CSCU

# Natural Gas Use Intensity by Agency



# State Buildings by Square Footage

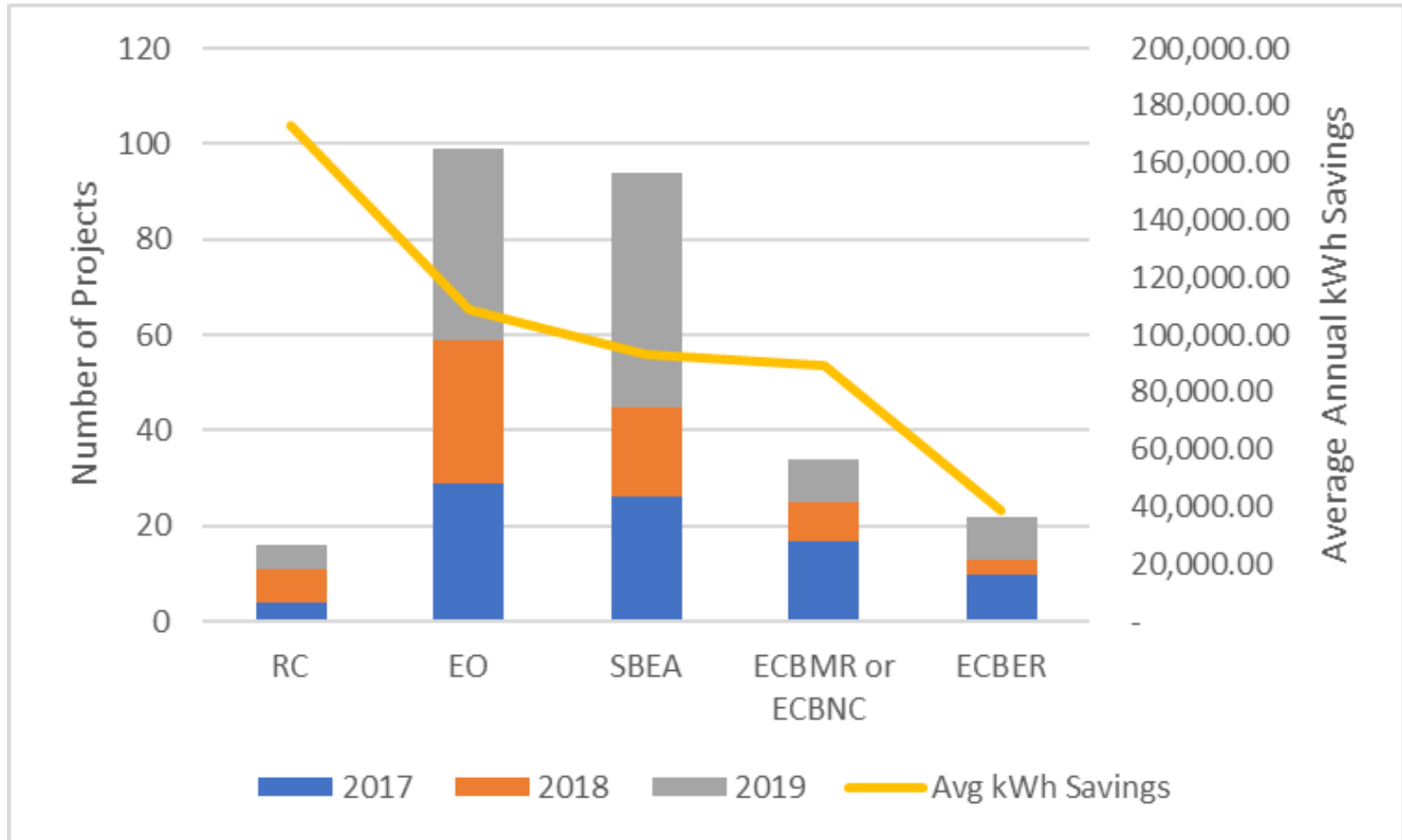


|                | <1,000 | 1,000-5,000 | 5,000-10,000 | 10,000-20,000 | 20,000-30,000 | > 30,000 |
|----------------|--------|-------------|--------------|---------------|---------------|----------|
| % of Total SF  | 1%     | 6%          | 5%           | 10%           | 6%            | 72%      |
| % of Buildings | 37%    | 31%         | 10%          | 9%            | 3%            | 9%       |

\*Does not include UConn or CSU

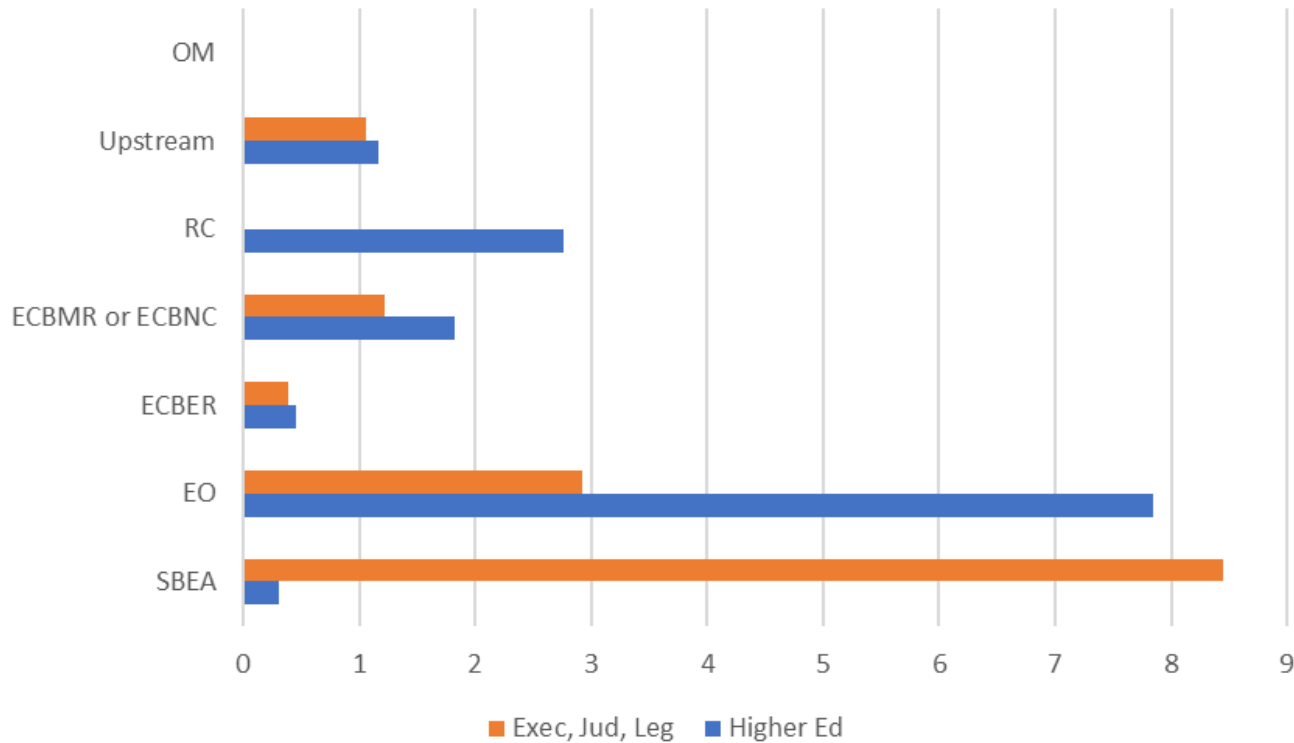


# 2017-2019 State Building Electricity Saving Projects by Program



# 2017-2019 State Building Electricity (Annual kWh) Savings by Program

2017 - 2019 Electric Savings  
(million kWh)



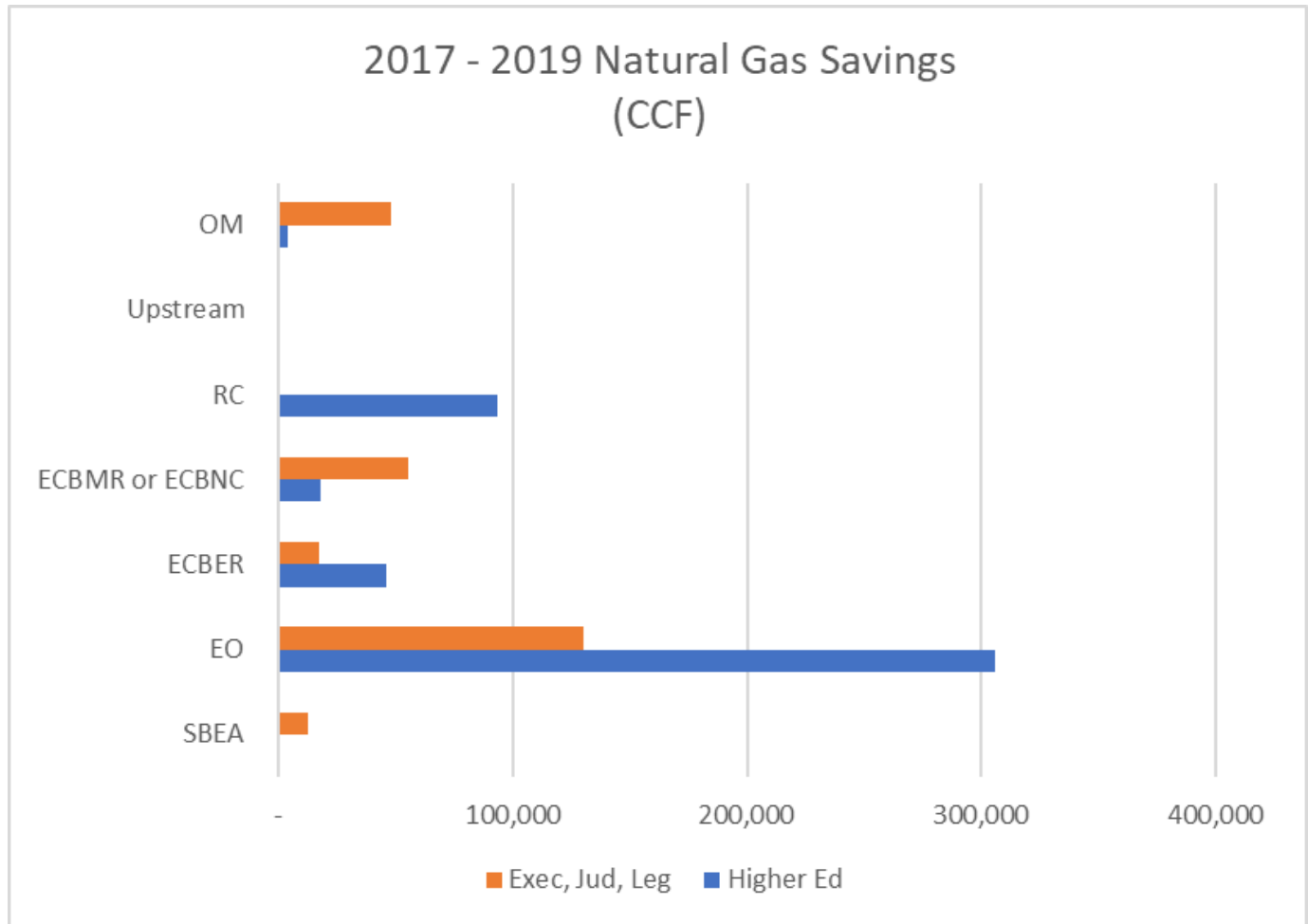
**Executive,  
Judicial,  
Legislative**  
14M Annual kWh

**UConn and CSCU**  
14.3M Annual kWh

# 2017-2019 State Building Natural Gas (CCF) Savings by Program

**Executive,  
Judicial,  
Legislative**  
265k Annual CCF

**UConn and CSCU**  
468k Annual CCF





Empowering you to make  
smart energy choices

# Energy Efficiency (EE) Program Overview

# Energy Efficiency Program Strategies

---

- Tailor services based on usage and market segments
- Encourage focus on multiple end uses and fuels
- Promote best practices through:

## Education

- Benchmarking
- Case Studies

## Incentives

- Installing New Equipment
- Retrofitting Existing Equipment

## Financing

- On-bill for some programs
- Low or no interest



# Energy Efficiency Approaches

“Horizontal” Retrofits 

“Deep” Retrofits 

|                        | DOT |   |   | DOC |   |   | DAS |   |   | SDE |   |   | Other |   |   |
|------------------------|-----|---|---|-----|---|---|-----|---|---|-----|---|---|-------|---|---|
| Lighting               | ■   | ■ | ■ | ■   | ■ | ■ | ■   | ■ | ■ | ■   | ■ | ■ | ■     | ■ | ■ |
| Steam Traps            |     | ■ |   | ■   | ■ | ■ |     |   | ■ |     |   | ■ |       | ■ |   |
| Refrigeration Controls | ■   |   | ■ | ■   | ■ | ■ | ■   | ■ | ■ | ■   | ■ | ■ |       |   | ■ |
| Vent Hoods             |     |   |   |     |   |   | ■   | ■ | ■ | ■   | ■ | ■ |       |   |   |
| ECM Motors             | ■   | ■ | ■ | ■   | ■ | ■ | ■   | ■ | ■ | ■   | ■ | ■ | ■     | ■ | ■ |
| Other...               |     | ■ |   | ■   |   | ■ |     | ■ |   | ■   |   | ■ |       | ■ |   |

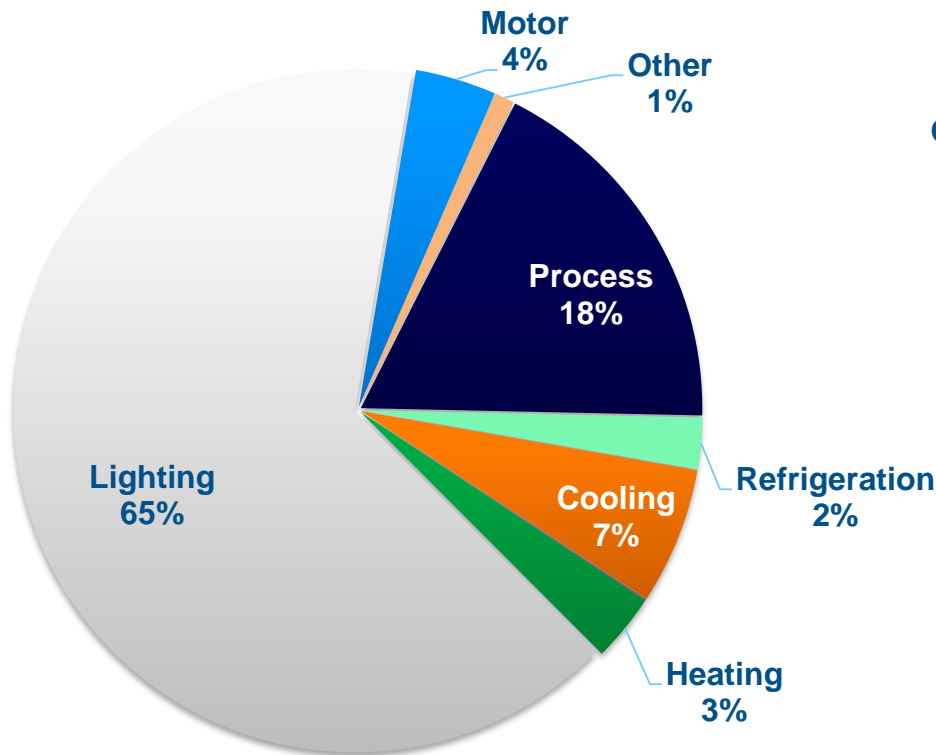
# Many Savings Opportunities

---

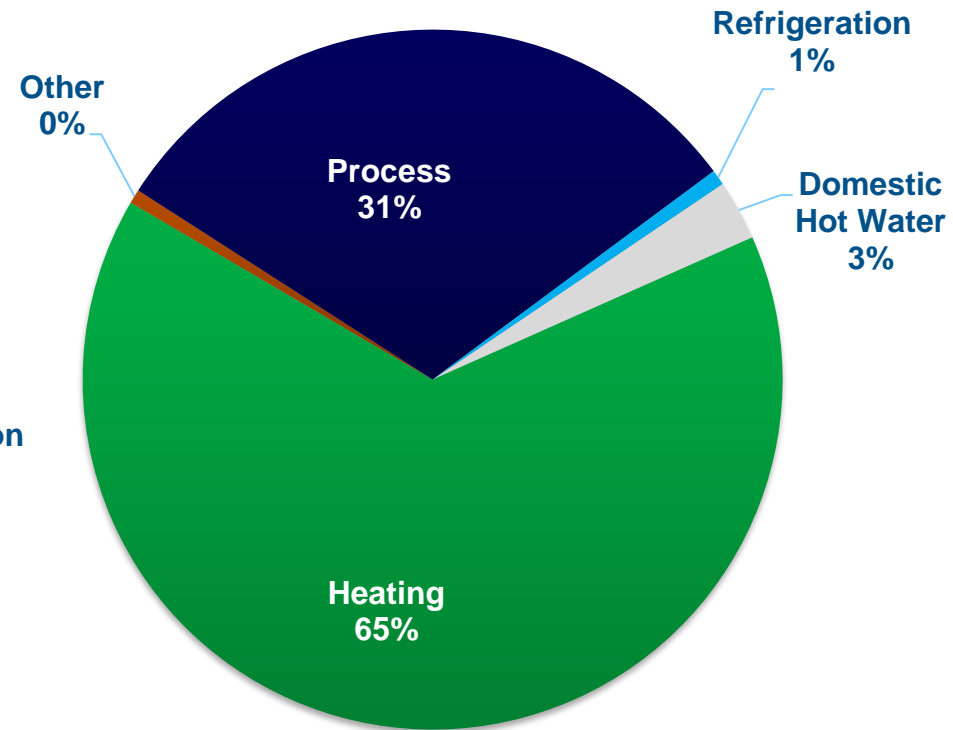
- New Construction
- Existing Buildings
  - Electric-saving measures
    - Lighting
    - Non-lighting
  - Gas-saving measures

# C&I Annual Program Savings by End Use

## Annual Electric Savings



## Annual Gas Savings







Empowering you to make  
smart energy choices

Questions?