

THE STATE OF STDs IN

Connecticut
in
2019

Sexually Transmitted
Diseases increased for the
sixth year



15,290
CASES OF CHLAMYDIA
16% increase since 2015



4,418
CASES OF GONORRHEA
112% increase since 2015



210
CASES OF SYPHILIS
128% increase since 2015



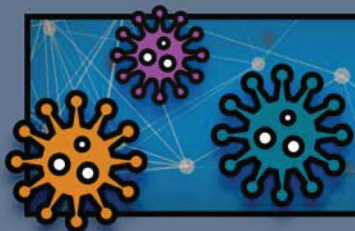
3
CASES OF SYPHILIS
AMONG NEWBORNS
Total of six (6) cases since 2015

LEARN MORE AT: www.cdc.gov/std/

**ANYONE WHO HAS SEX COULD
GET AN STD, BUT SOME GROUPS
ARE MORE AFFECTED**

- **Young People aged 15-24**
- **Men who have Sex with Men**
- **Pregnant Women**

LEFT UNTREATED, STDs CAN CAUSE:



**INCREASED RISK OF GIVING
OR GETTING HIV**



**LONG-TERM
PELVIC/ABDOMINAL PAIN**



**INABILITY TO GET PREGNANT OR
PREGNANCY COMPLICATIONS**

**PREVENT THE SPREAD
OF STDs WITH THREE
SIMPLE STEPS:**

talk | test | treat



**Centers for Disease
Control and Prevention**
National Center for HIV/AIDS,
Viral Hepatitis, STD, and
TB Prevention