

SCHOOL BASED HEALTH CENTERS (SBHCs)

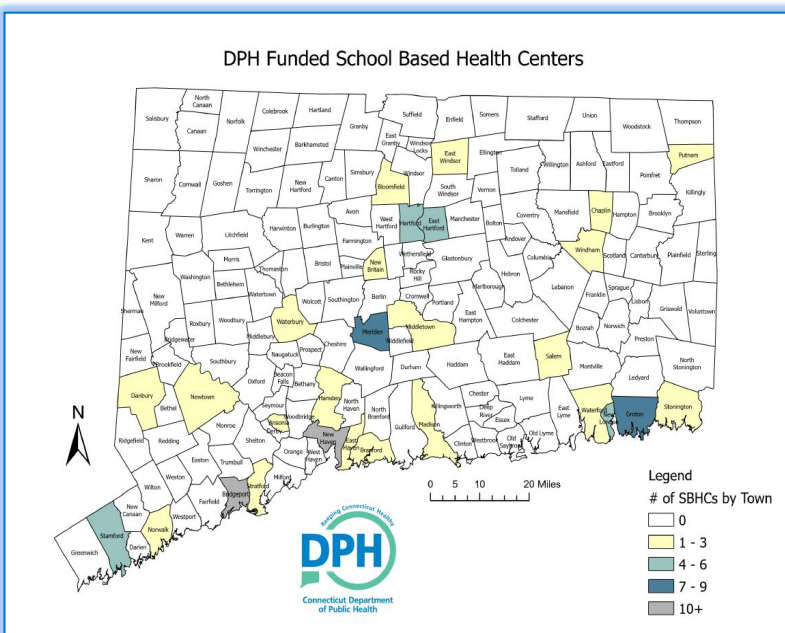
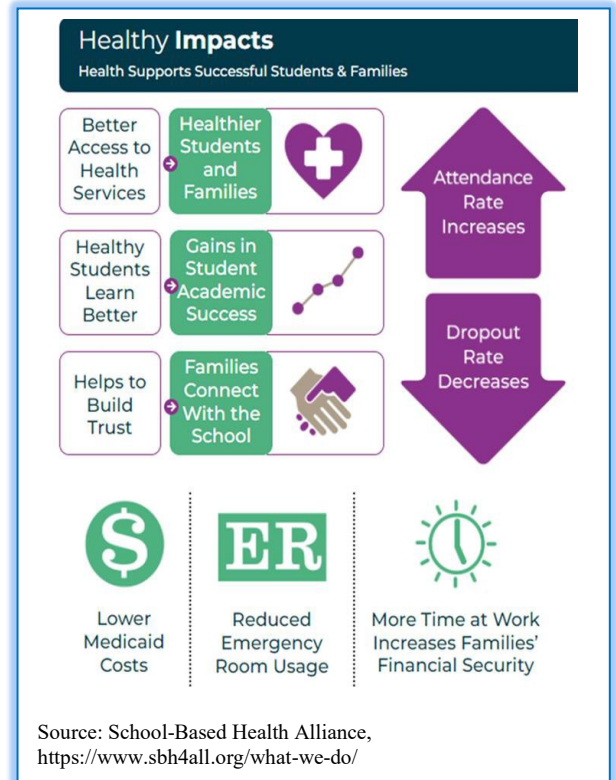
Community, Family Health, and Prevention Section – March 2023

What are School Based Health Centers (SBHCs)?

- Free standing medical clinics located within or on the grounds of schools.
- Licensed as outpatient clinics or as hospital satellites.
- Open to all enrolled in the school regardless of ability to pay/insurance status.
- Work collaboratively with schools, parents, and the community.
- Ensure that students are healthy and ready to learn.

What are the benefits of SBHCs?

- Accessible health care where and when students need it.
- Supports **students** by providing a safe place to talk about sensitive issues such as depression, family problems, relationships, and substance abuse.
- Supports the **school** environment by helping children stay in school and by identifying and addressing health problems that may interfere in the learning process.
- Supports **families** by allowing parents to stay at work while attending to their child's routine health care needs.



Connecticut SBHCs

- DPH currently funds 90 School Based Health programs in 27 communities statewide.
- Of those 78 (87%) are SBHCs and provide the full complement of SBHC programming (medical and mental health services). The other 12 (13%) Expanded School Health programs offer more limited services (medical or mental health services).
- SBHCs are staffed by an interdisciplinary team of professionals with expertise in child and adolescent health.

Access and Utilization

	2019-2020	2020-2021*	2021-2022
Student Population	69,804	67,206	68,569
Enrolled	38,869	35,958	36,555
% of Population Enrolled	56%	54%	53%
Served	20,148	12,953	21,979
% of Population Served	29%	19%	32%

Medical Services

- Physical exams and routine checkups
- Immunizations
- Diagnosis and treatment of acute injuries and illnesses
- Managing/monitoring chronic disease
- Prescribing and dispensing medications
- Reproductive health
- Health education/promotion/risk reduction activities
- Nutrition counseling and weight management
- Outreach and linkages to community-based providers
- Referral and follow-up for specialty care

	2019-2020	2020-2021*	2021-2022
Medical Visits	44,955	25,711	57,485
Medical Users	17,254	9,831	18,017
Average # of Medical Visits	2.6	2.6	3.2

*In the 2021 - 2022 school year **77%** of medical clients had a mental health screener at a physical.*

Mental Health Services

	2019-2020	2020-2021*	2021-2022
Mental Health Visits	49,297	51,182	63,556
Mental Health Users	4,344	4,515	4,091
Average # of Mental Health Visits	11.3	11.3	15.5

- Mental health services and screenings
- Individual, family, and group counseling
- Crisis intervention
- Education

*In the 2021-2022 school year **33** screening tools were utilized. **11.5%** of clients were identified as at risk through a positive mental health screener. **617** clients were referred into counseling.*

Dental Services

- Oral health screening
- Restorative care
- Sealants
- Prophylaxis
- Mobile dental

	2019-2020	2020-2021*	2021-2022
Dental Visits	5,914	2,880	7,324
Dental Users	3,181	1,674	4,213
Average # of Dental Visits	1.9	1.7	1.7

*In 2021-2022 school year **1/3** of DPH funded SBHCs provided dental service.*

* Note: 2020-2021 data were reduced due to COVID restrictions.