

## Radon Testing Checklist for the Home

This checklist will help you accurately test for radon in your home's indoor air. Follow the instructions included with the test device.

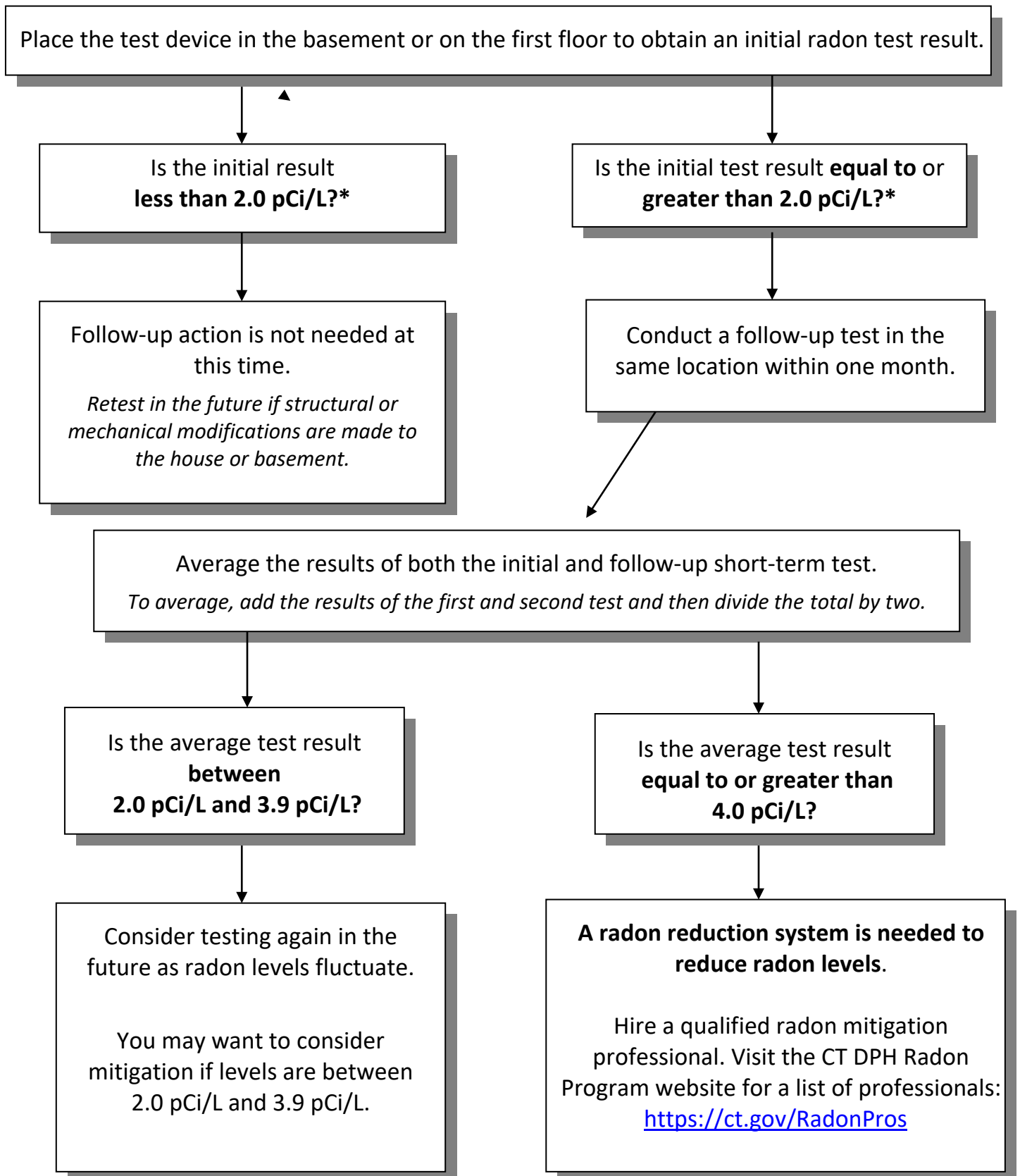
- ☐ **Test for radon in the lowest frequently occupied area of your home during the colder months (November through March).**
  - Place the test device in a room on the first floor if that is the lowest level of the home that you use regularly.
  - Place the test device in the basement if you use the space three or more hours each day or if you plan to renovate and occupy that space more often soon.
- ☐ **Windows should be kept closed for 12 hours before testing and throughout testing (48+ hours).** All doors to the outside should be kept closed as much as possible during the test (except when people are leaving or entering).
- ☐ **To BEGIN your test:**
  - Open the test device.
  - You MUST write the "start date" and "start time" on the lab form.
- ☐ **Place the test device between 2 and 5 feet above the floor and at least 3 feet away from windows and exterior doors.**
- ☐ **Leave the test device in place for a minimum of 2 days (48 hours) to a maximum of 7 days (168 hours).**

*NOTE: The lab cannot analyze the device unless it has been exposed for at least 2 days. The lab will NOT analyze your test if it is exposed for longer than 7 days.*
- ☐ **To END your test:**
  - After 2 to 7 days, seal test kit after removing cardboard insert.
- ☐ **Complete the lab form by answering all questions.**
  - You MUST write the date and time that you closed your test device. *The lab cannot analyze the device if dates and times are missing.*
- ☐ **Mail the test device with the lab form to the laboratory immediately.**

### Additional Testing Information:

- ✓ Record your test ID number (located near the barcode) for your records.
- ✓ Do NOT test during unusual weather conditions. Heavy rain, severe snowstorms, and unusually high winds can affect indoor radon levels resulting in an unreliable test result.
- ✓ Do NOT test in a kitchen, bathroom, closet, or hallway.
- ✓ Do NOT place the test device in direct sunlight, near drafts from furnaces, boilers, fireplaces, vents, or appliances.
- ✓ Do NOT relocate the test device after it has been placed.
- ✓ Do NOT operate exhaust fans or heating, ventilation and air conditioning (HVAC) systems that bring outside air into the home during testing. Systems can be left on only if they recycle air within the house. Central air, dehumidifiers, radon mitigation systems, and combustion air supplies for furnaces should be operating normally.
- ✓ The CT Department of Public Health (CT DPH) maintains lists of qualified radon professionals. If you prefer to hire a professional to perform a confirmatory radon test in your home, visit the CT DPH Radon Program website (<https://ct.gov/RadonPros>) for a list of radon measurement professionals.

The following flowchart is the State of Connecticut Department of Public Health (CT DPH) recommended short-term testing protocol for residential buildings.



\*Radon is measured in units called "picocuries per liter" (pCi/L)