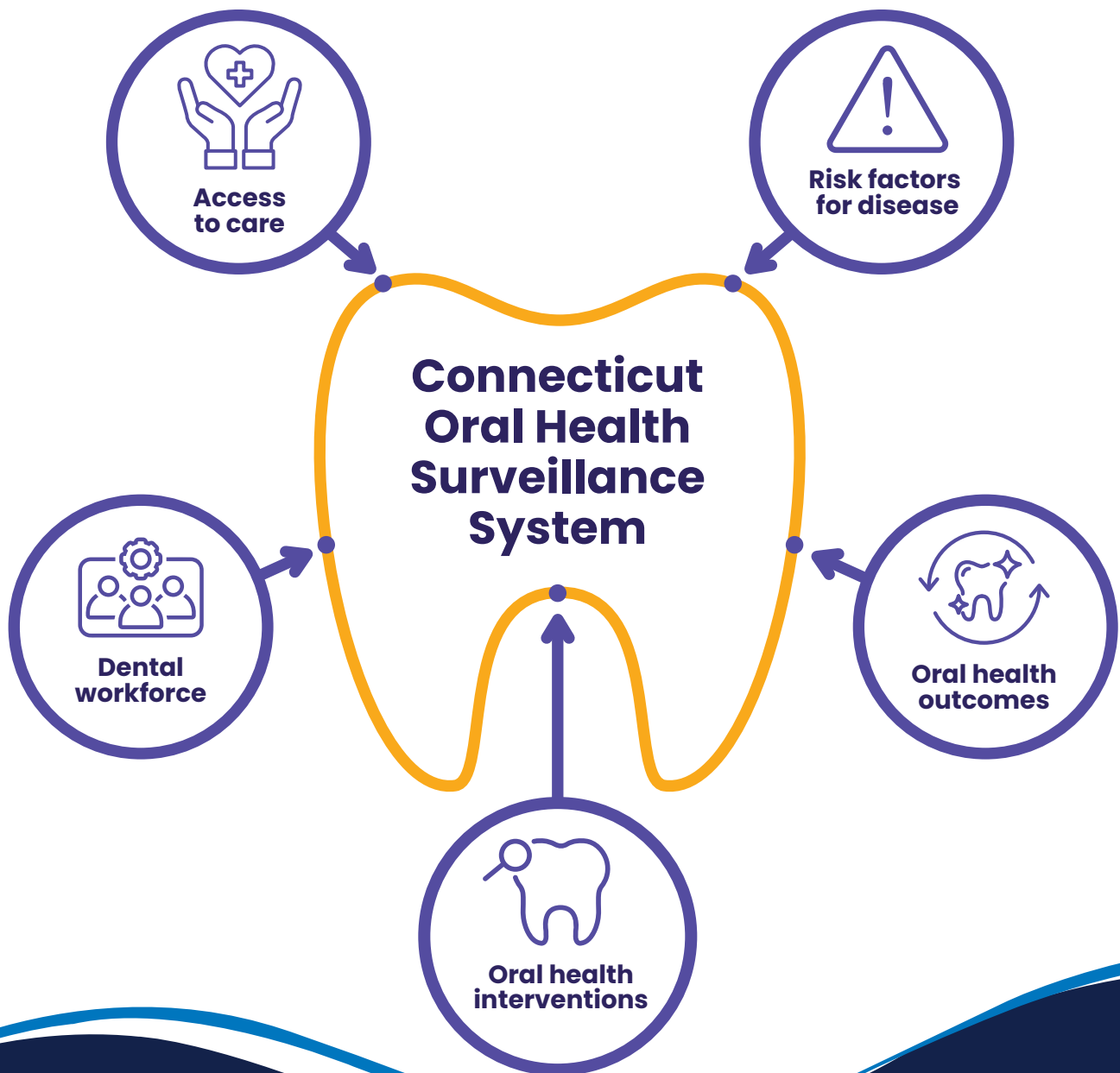




# Overview of the Connecticut Oral Health Surveillance System

The Connecticut Department of Public Health's Office of Oral Health (CT DPH OOH) uses the Connecticut Oral Health Surveillance System (COHSS) to identify disparities in health outcomes and in access to care. Our goal is to share this data with medical and dental providers, community-based organizations and public health professionals to inform program planning, implementation and evaluation.



## What does CT DPH OOH do with the data?

The CT DPH OOH uses the COHSS to collect and analyze data in an effort to:



**Identify and detect disease**



**Inform policy and public health recommendations**



**Inform planning and evaluation of programs**



**Enhance community partnerships by sharing and utilizing oral health-related data**

## What data does the COHSS include?

The COHSS includes **48** oral health and overall health outcome measures from **16+** sources related to:



### Oral Health Outcomes

- dental decay
- dental treatment
- periodontal disease



### Oral Health Interventions

- dental sealant placement
- fluoride treatments
- school-based health centers that provide dental care and sealants



### Access to care

- dental visits
- dental treatment services
- dental sealant placements
- enrollment/eligibility in Medicaid



### Workforce, Infrastructure, and Policy

- dentists and dental hygienists with a current or active license
- dentists enrolled in Medicaid
- active dental Medicaid providers



### Risk factors

- tobacco use among adolescents
- current tobacco use among adults

### Get Access to COHSS Data

Contact the Office of Oral Health at [CTDPH.OralHealth@ct.gov](mailto:CTDPH.OralHealth@ct.gov) or 860-509-8251.

