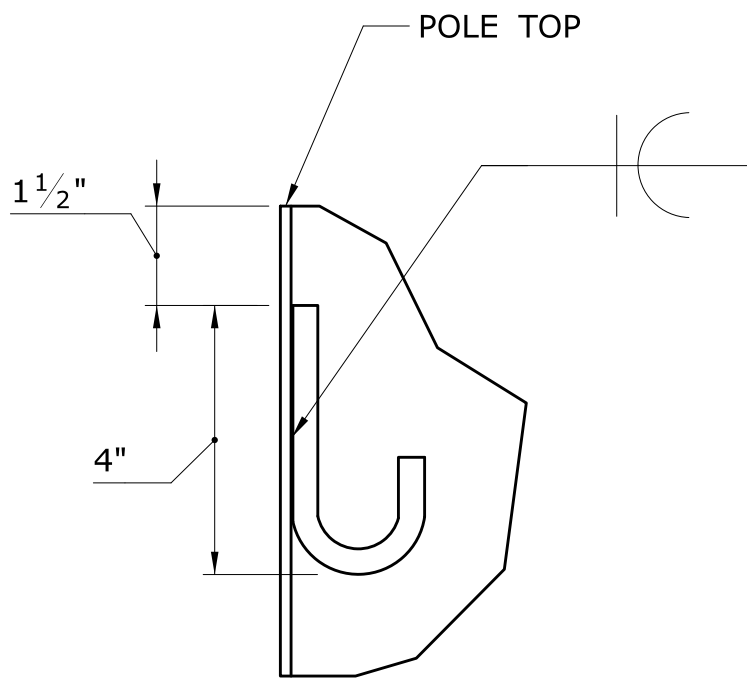
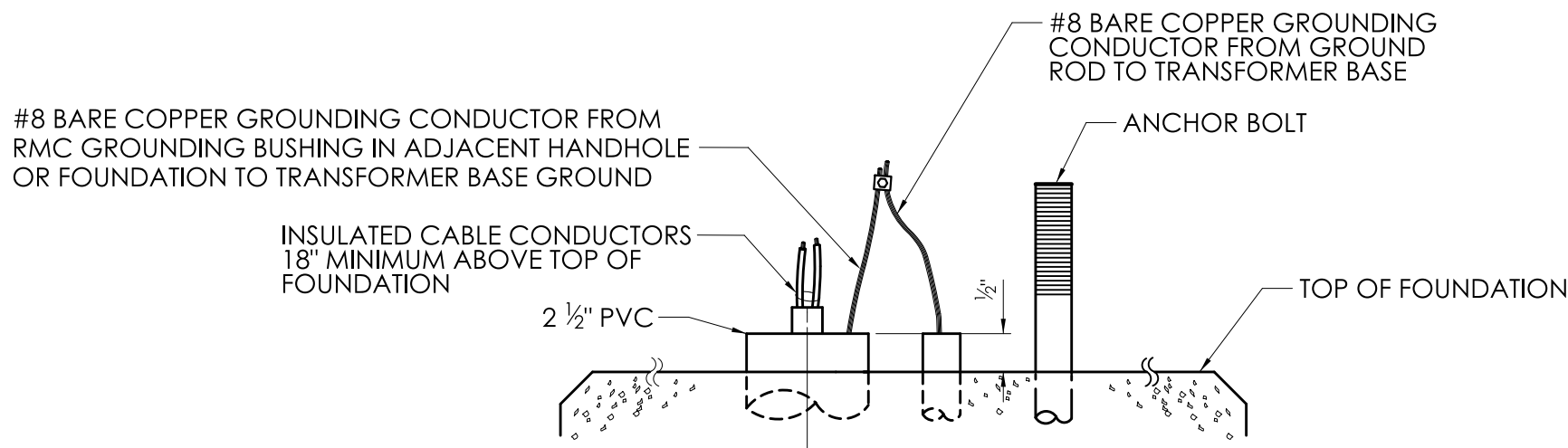


| ALUMINUM LIGHT STANDARD - DIMENSION TABLE | | | | | | | | |
|---|-----------------|----------------|----------------|-----|----------------------|-------------|------------------|----------------------|
| ITEM NO. | MOUNTING HEIGHT | BRACKET LENGTH | SHAFT DIAMETER | | SHAFT WALL THICKNESS | BASE TYPE | ANCHOR BOLT SIZE | BOLT CIRCLE DIAMETER |
| | | | BOTTOM | TOP | | | | |
| 1003202 | 30' | 6' | 8" | 6" | 0.156" | TRANSFORMER | 1"X40" | 15" |
| 1003205 | 30' | 12' | 8" | 6" | 0.250" | TRANSFORMER | 1"X40" | 15" |
| 1003206 | 30' | 15' | 8" | 6" | 0.250" | TRANSFORMER | 1"X40" | 15" |
| | | | | | | | | |
| | | | | | | | | |



J-HOOK MOUNTING
DETAIL

LIGHT STANDARD FOUNDATION - TYPE I



CONDUIT TERMINATION AT LIGHT STANDARD BASE

LIGHT STANDARD NOTES:

- 1)

ALUMINUM ALLOY SHALL BE 6063, T6 TEMPER.
- 2)

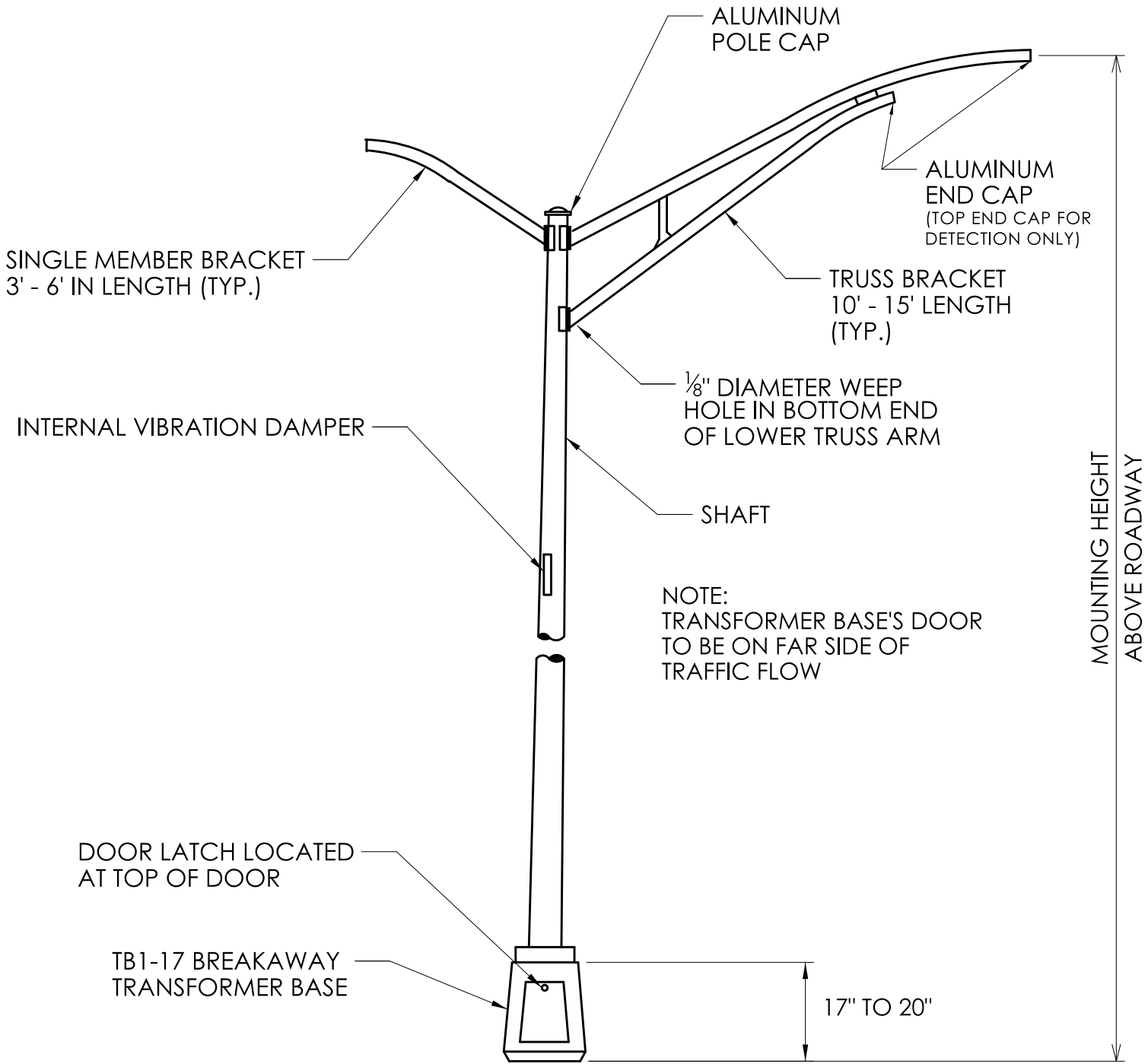
BOLT CIRCLE SHOWN IS FOR TRANSFORMER BASE BOTTOM.
- 3)

TO BE DESIGNED TO AASHTO "STANDARD SPECIFICATION FOR STRUCTURAL SUPPORTS FOR HIGHWAY SIGNS, LUMINAIRES AND TRAFFIC SIGNALS" FOR 90 M.P.H. WINDS.
- 4)

WELDING DESIGN AND FABRICATION SHALL CONFORM TO THE LATEST EDITION OF THE ANSI/AWS D1.2, STRUCTURAL WELDING CODE - ALUMINUM.
- 5)

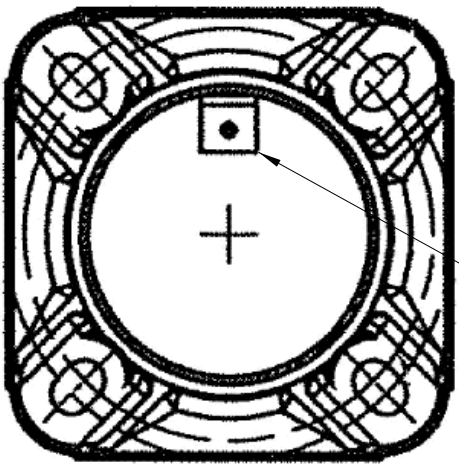
FOR BASE CONNECTION WELDS, FABRICATION INSPECTION AND TESTING SHALL BE PERFORMED AS NECESSARY PRIOR TO ASSEMBLY, DURING ASSEMBLY, DURING WELDING, AND AFTER WELDING, TO ENSURE THAT MATERIALS AND WORKMANSHIP MEET THE REQUIREMENTS OF THE CONTRACT DOCUMENTS. FABRICATION INSPECTION AND TESTING IS THE RESPONSIBILITY OF THE CONTRACTOR. VERIFICATION INSPECTION AND TESTING IS THE PREROGATIVE OF THE ENGINEER (CONNDOT).
- 6)

NON-DESTRUCTIVE TESTING FOR ALUMINUM SHALL BE AS FOLLOWS: A RANDOM 25% OF ALL BASE CONNECTION WELDS SHALL BE INSPECTED IN ACCORDANCE WITH ASTM E-165 STANDARD PRACTICE FOR LIQUID PENETRANT INSPECTION METHOD.

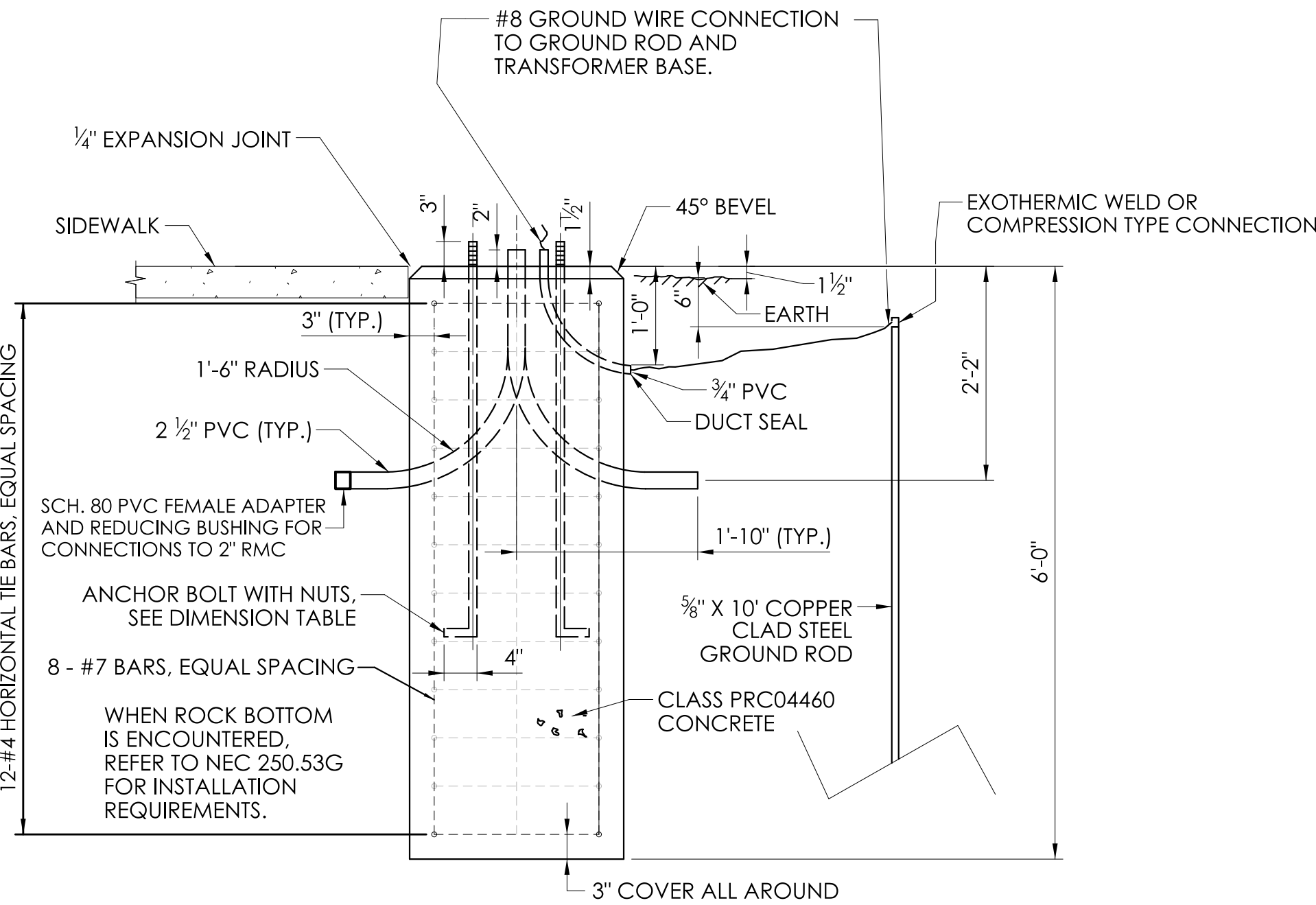
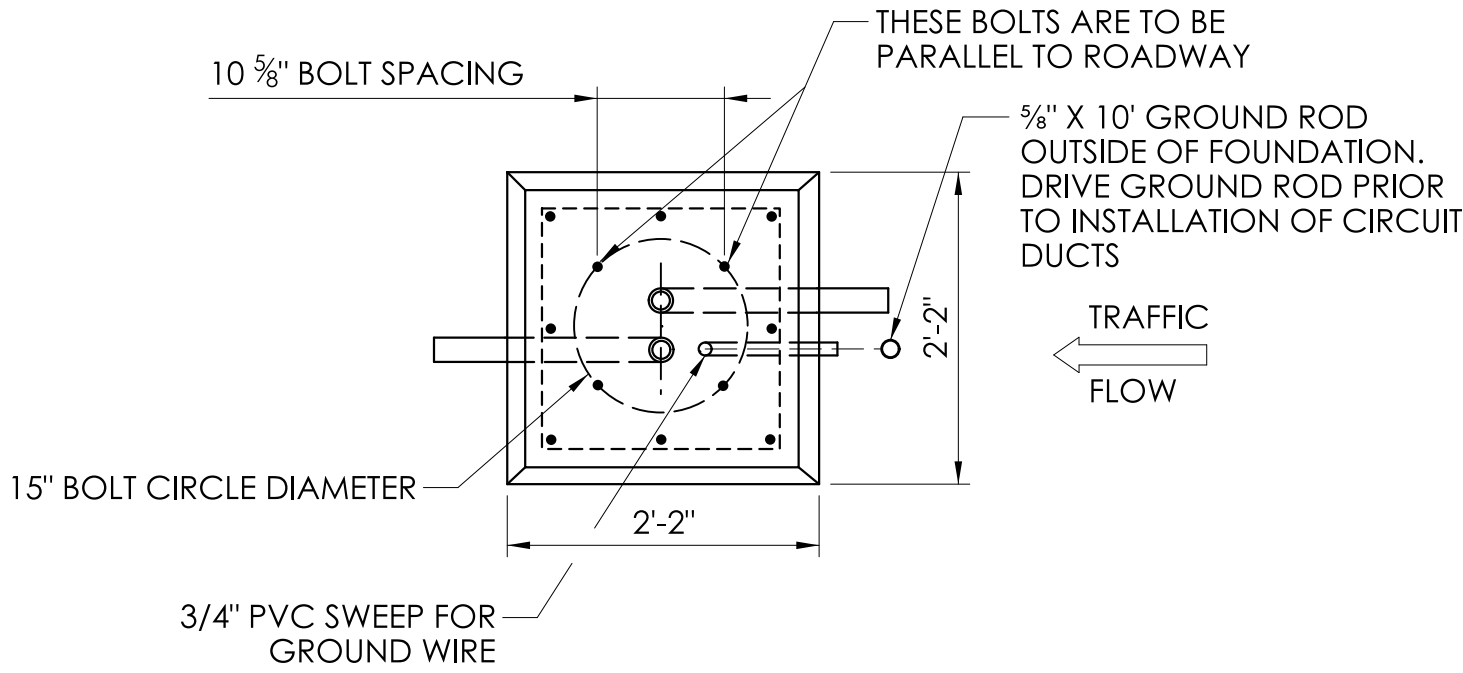


ALUMINUM LIGHT STANDARD

NOTE:
TRANSFORMER BASE DOOR TO BE ON FAR SIDE OF TRAFFIC FLOW.
TOP 2'-6" OF SHAFT IS NOT TAPERED.
REFER TO SIGNAL PLANS FOR BRACKET LENGTHS.

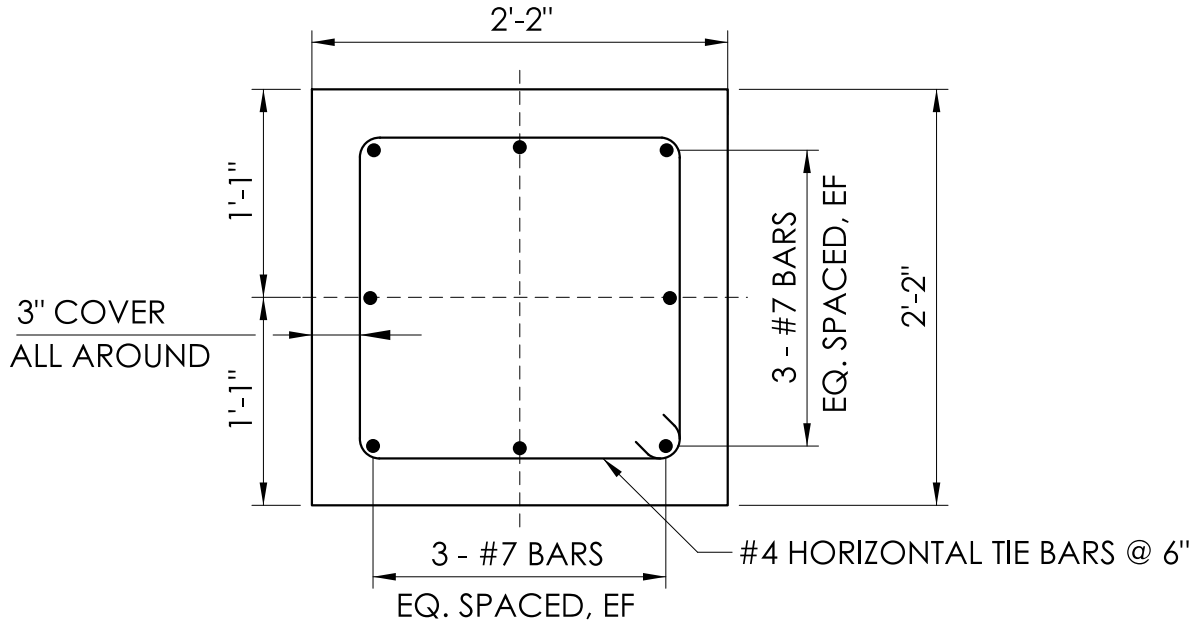


ALUMINUM LIGHT STANDARD BASE



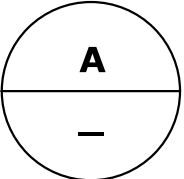
LIGHT STANDARD FOUNDATION - TYPE I

SCALE: 3/4"=1'-0"



PLAN - FOUNDATION REINFORCEMENTS

SCALE: 1"=1'-0"



| REVISION DESCRIPTION | | | |
|----------------------|------|-------------|--|
| REV | DATE | DESCRIPTION | |
| | | | |
| | | | |
| | | | |
| | | | |

| | | | | | | | |
|--|--|--|----------------|----------|--|--------------|--------------|
| SIGNATURE BLOCK: | | <div>NOT TO SCALE</div> <div>CONNECTICUT DEPARTMENT OF TRANSPORTATION</div> | PROJECT TITLE: | TOWN(S): | DRAWING TITLE: <div>LIGHT STANDARD AND FOUNDATION FOR VEHICLE DETECTION</div> | PROJECT NO.: | DRAWING NO.: |
| DESIGNER/DRAFTER: C. NETTLETON CHECKED BY: J. RODRIGUEZ | | | | | | | SHEET NO.: |