

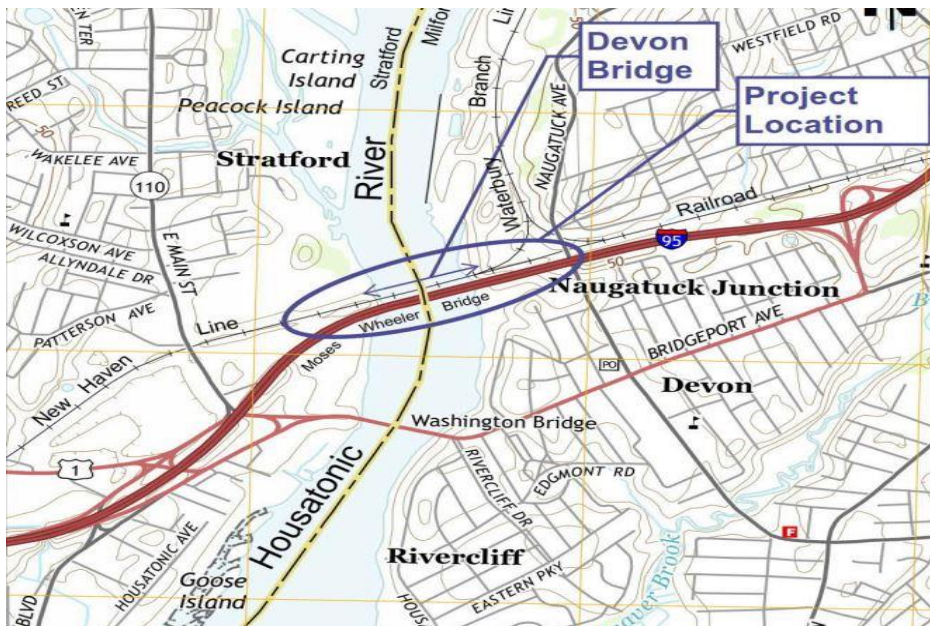


**PROJECT 0301-0557
DEVON INTERIM REPAIRS
MUNICIPALITIES OF STRATFORD AND MILFORD**

Project Location: The project is located on the Metro North Line over the Housatonic River and spans between the City of Milford and Town of Stratford. The Devon bridge number is 08080R and located at Metro North Mainline Milepost 60.42.

Purpose and Need: The primary purpose of this project is the need to ensure the bridge can be structurally reliable until the future replacement project, 0301-0168, can occur. Given the number of necessary projects on the MNR line, a major project for this bridge cannot occur immediately. However, the structure is approaching its intended service life. The structure has a current condition rating of '3' out of a 0 to 9 scale, this corresponds with a 'poor' rating and requires repair or rehabilitation.

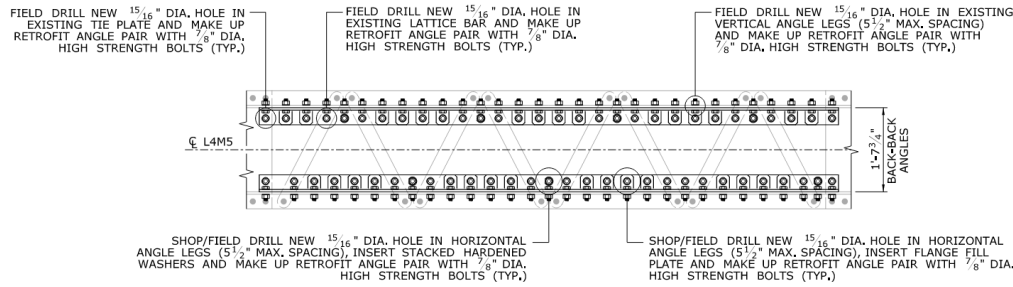
Scope of Work: The proposed rehabilitation will be an interim repair of identified elements to extend the life of the Bridge by 10-15 years. and includes retrofitted eyebars, steel truss members such as truss chords, hangers, vertical and diagonal members and gusset plates.



Project Manager	Gregory Funk	Anticipated Construction Start Date	Spring 2025	Anticipated Construction Completion Date	Winter 2027 2 year duration
------------------------	--------------	--	-------------	---	--------------------------------

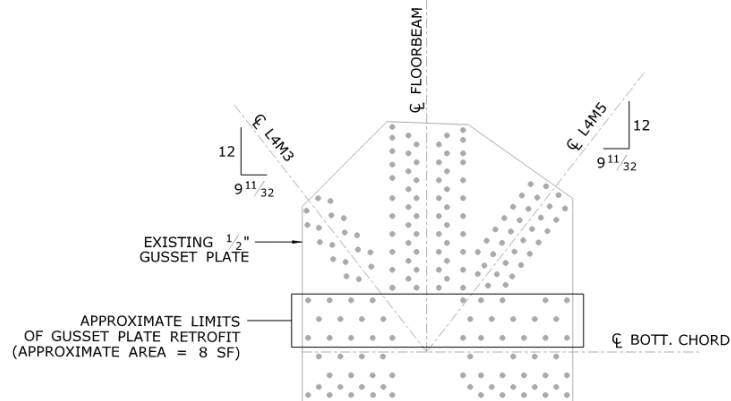


**PROJECT 0301-0557
DEVON INTERIM REPAIRS
MUNICIPALITIES OF STRATFORD AND MILFORD**



RETROFIT ANGLE CONNECTION DETAIL
SCALE: $\frac{3}{4}$ " = 1'-0"

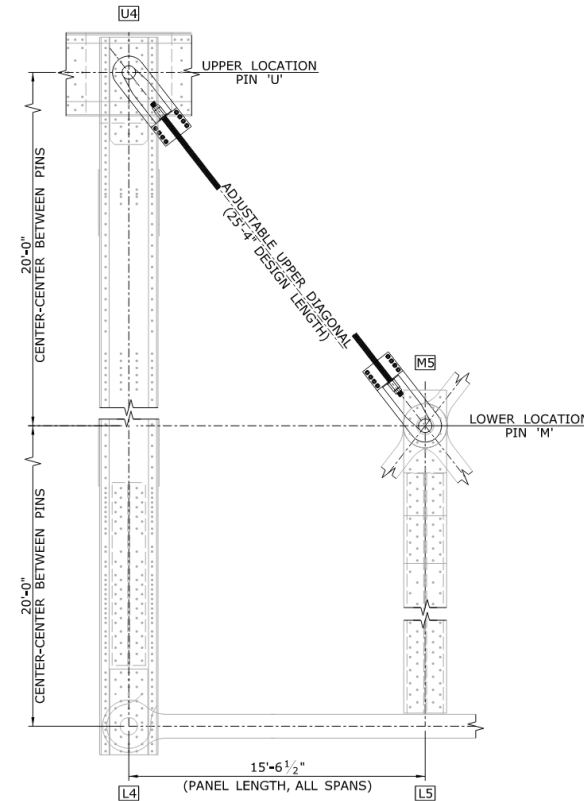
Example of an angle connection retrofit detail



GUSSET PLATE L2 FRONT ELEVATION

(GUSSET PLATE L2 SHOWN, GUSSET PLATE L10 OPPOSITE HAND)
(FIELDSIDE GUSSET PLATE SHOWN, TRACKSIDE GUSSET PLATE SIMILAR)
SCALE: $\frac{1}{2}$ " = 1'-0"

Example of gusset plate retrofit



**TRUSS PANEL ELEVATION
GENERAL ARRANGEMENT - ADJUSTABLE UPPER DIAGONAL**

(LOCATION M5-U4 SHOWN, OTHERS SIMILAR)
SCALE: $\frac{1}{4}$ " = 1'-0"

Example of diagonal retrofit

Proposed Repairs



PROJECT 0301-0557
DEVON INTERIM REPAIRS
MUNICIPALITIES OF STRATFORD AND MILFORD

- Stratford: Track 1 and 3 access will be via Longbrook Ave
- Milford: Track 2 and 4 access will be via Naugatuck Ave
- Barge access for underside repairs will be via one of the private marinas near the project site
- Surrounding Properties: Minimal to no impact
- New Haven Mainline Impacts: Minimal impact to New Haven Line Rail Traffic
 - Work will be done with 2 track outages, allowing rail traffic to continue on the other two rail lines over the bridge.
- Metro North Waterbury Line Impacts
 - Tracks 1 and 3 outages would impact the Waterbury wye junction, restricting rail traffic from the westmost line of the wye junction between the bridge and the Waterbury Line.
 - CTDOT is evaluating bussing options or a temporary transfer station to transfer commuters from the Waterbury Branch to Mainline.
- Boating community: navigation under the bridge will be maintained

Public Impacts