

State Project No. 0083-0273

Public Information Meeting



Pavement Rehabilitation and Safety
Improvements on Milford Parkway (SR 796)
City of Milford, CT
January 29, 2025



MEETING AGENDA



- **Your Civil Rights**
- **How to Use Zoom Q&A**
- **Project Presentation**
- **Q&A Session**

Project Webpage:

<https://portal.ct.gov/DOTMilford0083-0273>

PROJECT PERSONNEL

**Connecticut Department
of Transportation**



Michael Laurice – Project Manager



Haseeb Ahmad– Project Engineer



Ahsan Saghir – Project Manager



Christopher van Olden – Project Engineer

Title VI – Your Civil Rights

No person shall, on the basis of race, color, or national origin, be excluded from participation or subject to discrimination in the development of this project.

- Voluntary Post-Meeting Survey:
 - <https://portal.ct.gov/ctdotsurvey>
- Civil Rights information:
 - <https://portal.ct.gov/DOT/Business/Office-of-Equity/Title-VI-Page>



A recording of this presentation will be posted to CTDOT's YouTube channel after the event.

Closed captioning—including non-English translation options—are available on Zoom and YouTube.



Connecticut Department of Transportation Title VI Notice to the Public

Individuals and organizations may file a complaint by completing the Title VI complaint form (<https://railroads.dot.gov/resource-center/title-vi-civil-rights-act-1964/title-vi-complaint-format>). Complaints should be signed and include contact information and should be sent to: Office of Civil Rights Federal Railroad Administration 1200 New Jersey Avenue, SE ROA-10, Mail Stop 5 Washington, DC 20590



The Connecticut Department of Transportation (CTDOT) operates its programs and services without regard to race, color, and national origin in accordance with Title VI of the Civil Rights Act. Any person who believes she or he has been aggrieved by any unlawful discriminatory practice under Title VI may file a complaint with the CTDOT.

For more information on the CTDOT's civil rights program, and the procedures to file a complaint, contact the CTDOT Title VI Coordinator at (860) 594-2169, TRS 711; Debra.Goss@ct.gov; or visit our administrative office at 2800 Berlin Turnpike, Newington, CT 06131. For more information, visit www.ct.gov/dot.

A complainant may file a complaint directly with the Federal Transit Administration by filing a complaint with the FTA Office of Civil Rights, Attention: Title VI Program Coordinator, East Building, 5th Floor-TCR, 1200 New Jersey Ave., SE, Washington, DC 20590

A complainant may file a complaint directly with the Federal Highway Administration by filing a complaint with the FHWA Office of Civil Rights, Attention: Title VI Program Coordinator, 8th Floor E81-105, 1200 New Jersey Ave., SE, Washington, DC 20590

如需更多信息或免费语言协助，请致电 (860) 594-2109

Para información adicional, o asistencia lingüística gratuita, por favor llame al (860) 594-2109

Per informazioni aggiuntive o assistenza linguistica gratuita, chiamare il numero (860) 594-2109

Para obter mais informações, ou para auxílio gratuito em outro idioma, ligue para (860) 594-2109

Aby uzyskać dodatkowe informacje lub bezpłatną pomoc tłumacza, proszę dzwonić pod numer (860) 594-2109

Для получения подробной информации или бесплатных услуг перевода звоните по телефону (860) 594-2109

Pou jwenn plis enfòmasyon, oswa asistans ak lang gratis, ranpri rele (860) 594-2109

لمزيد من المعلومات أو للحصول على مساعدة لغوية مجانية، يرجى الاتصال بالرقم (860) 594-2109

Si vous souhaitez en savoir plus ou bénéficier d'une assistance linguistique gratuite, merci de composer le numéro suivant (860) 594-2109

अधिक जानकारी या निःशुल्क भाषा संबंधी सहायता के लिए कृपया (860) 594-2109 पर कॉल करें।

추가 정보가 필요하거나 무료 언어 지원이 필요하시면 (860) 594-2109로 전화하십시오.

Để có thêm thông tin hoặc hỗ trợ ngôn ngữ miễn phí, vui lòng gọi (860) 594-2109

Question & Answer Session



By Email: DOTProject0083-0273@ct.gov



By Phone: (860) 594-2020



On Zoom: Q&A



Project Webpage:

<https://portal.ct.gov/DOTMilford0083-0273>

A screenshot of a web-based Q&A interface. At the top, it says 'Q&A' with a blue icon. Below that are two tabs: 'All questions (1)' and 'My questions'. A user named 'Lee' has posted a question at 01:54 PM: 'Will there be a follow-up session?'. There is a thumbs-up icon and a 'Comment' button. At the bottom, there is a text input field with the placeholder 'Type your question here...'.

Moderator will answer questions
in Zoom Q&A function

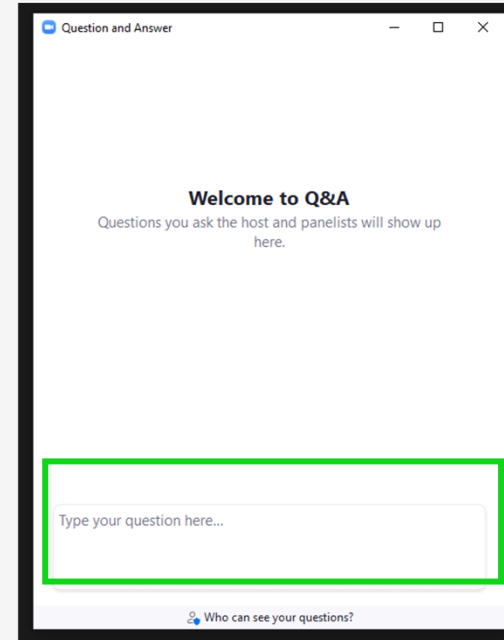
Note: Comment period is open through **February 12, 2025***

*Zoom Q&A is only available during live Q&A session



How to use Zoom Q&A

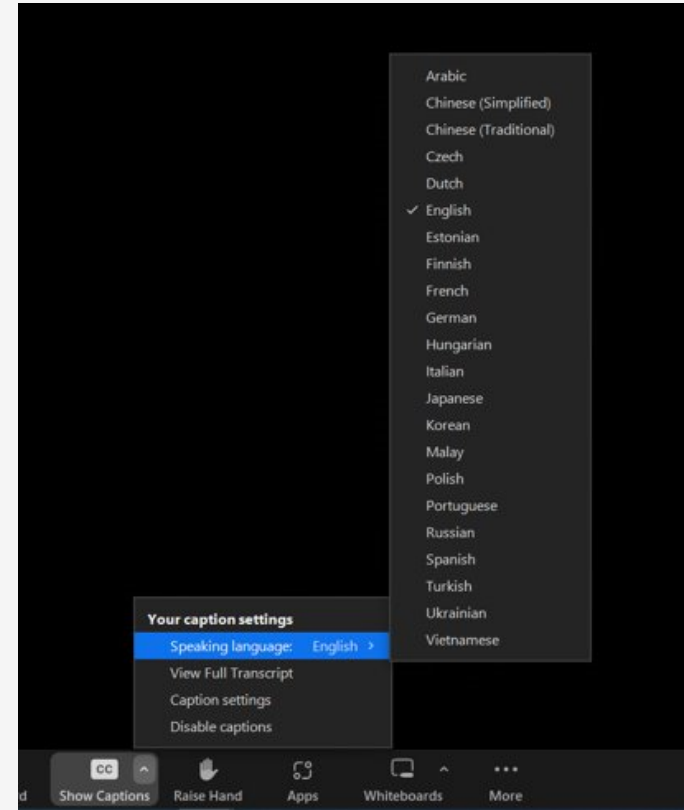
- (1) Select the Q&A tool at the bottom of the Zoom webinar window.
- (2) The Q&A window will open as seen on the right.
- (3) Please type question in the textbox and click enter.
- If you are an audio only participant, dial *9 to raise and lower your hand.



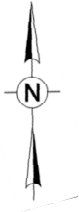
How to view captions & subtitles in Zoom

1. Click Show Captions (CC).
2. Click the Speaking Language.
3. Select the language you would like from the list shown.

Closed captioning—including non-English translation options—are available on YouTube after the event.



LOCATION MAP

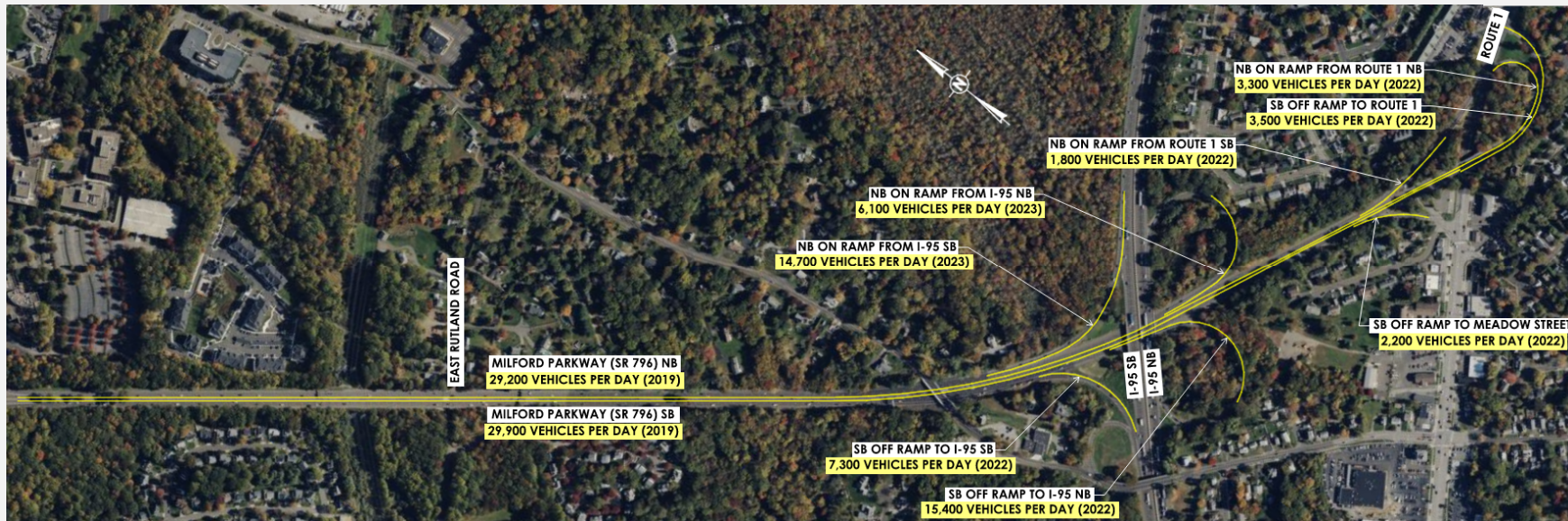


PURPOSE AND NEED

- Upgrade the Milford Parkway to a state of good repair
- Pavement beyond service life
- Roadside safety obsolete
- Acceleration and deceleration lanes substandard
- Bridge No. 01445 has structural damage to girder

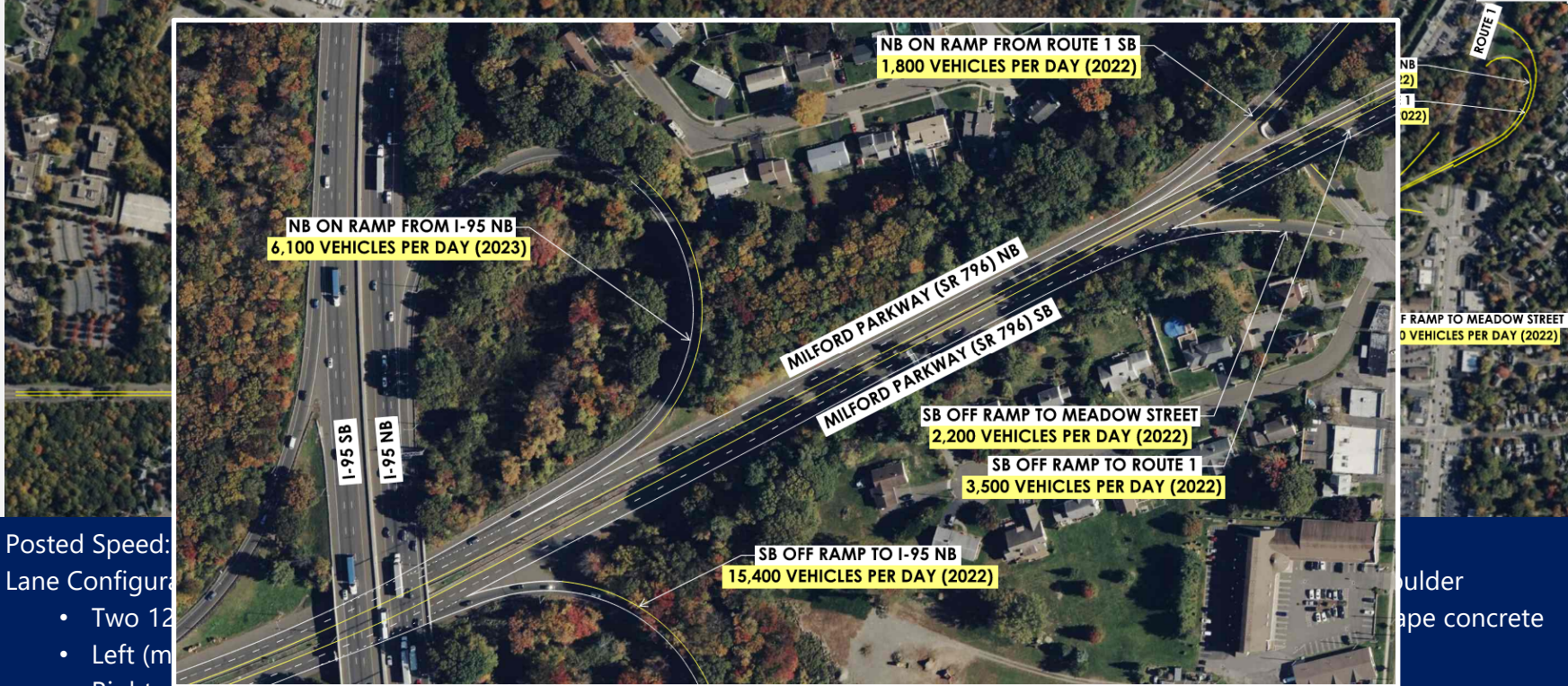


EXISTING CONDITIONS



- Posted Speed: 55 mph
- Lane Configuration
 - Two 12' lanes in each direction
 - Left (median) shoulder width varies 1.5' to 6'
 - Right shoulder width varies from 4' to 10'
- Roadside safety
 - Metal beam rail and cable guiderail along outside shoulder
 - Median consists of metal beam rail and 32" Jersey Shape concrete barrier

EXISTING CONDITIONS



- Posted Speed:
- Lane Configuration:
 - Two 12'
 - Left (m)
 - Right shoulder width varies from 4' to 10'

Shoulder
shape concrete

EXISTING CONDITIONS

BRIDGE NO. 01445 – Over East Rutland Rd



- Collision damage at northbound girder
- Architectural concrete detailing
- Substandard rating



CRASH DATA

Crash Data (Jan 2021 to Dec 2023)

- 189 Reported Crashes
 - 44 reported injuries
- Predominate Crash Types
 - 68% Rear-End
 - 20% Side-swipe
 - 10% Fixed object

189
44

TOTAL NUMBER OF CRASHES
TOTAL NUMBER OF INJURIES



REAR-END



SIDE-SWIPE



FIXED OBJECT



NON FIXED OBJECT



OVERTURN OR ROLLOVER



CRASH DATA

Crash Data (Jan 2021 to Dec 2023)

- 189 Reported Crashes
 - 44 reported injuries
- Predominate Crash Types
 - 68% Rear-End
 - 20% Side-swipe
 - 10% Fixed object

189
44

TOTAL NUMBER OF CRASHES
TOTAL NUMBER OF INJURIES



REAR-END



SIDE-SWIPE



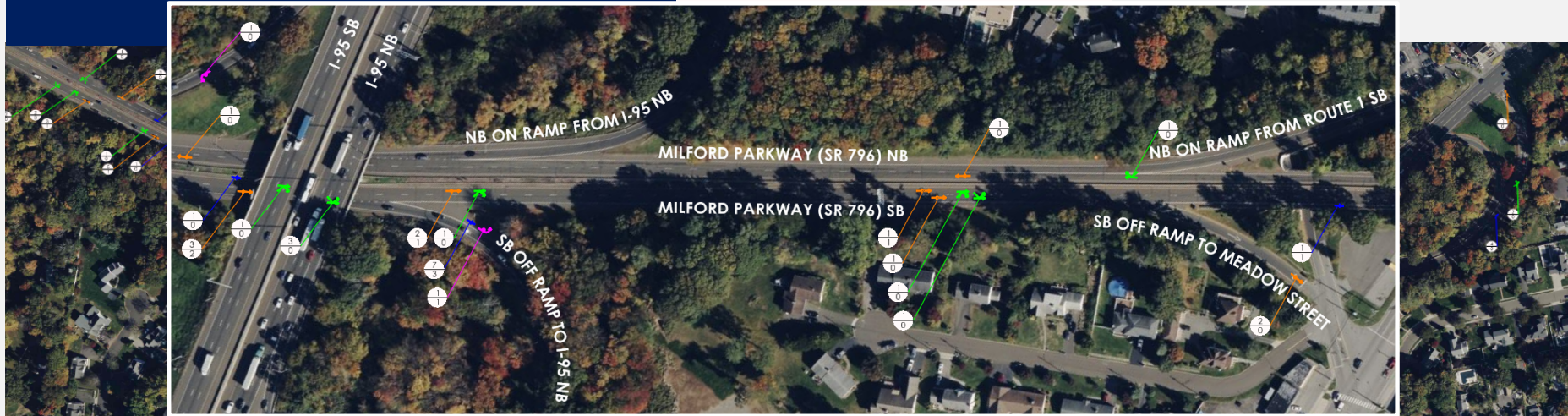
FIXED OBJECT



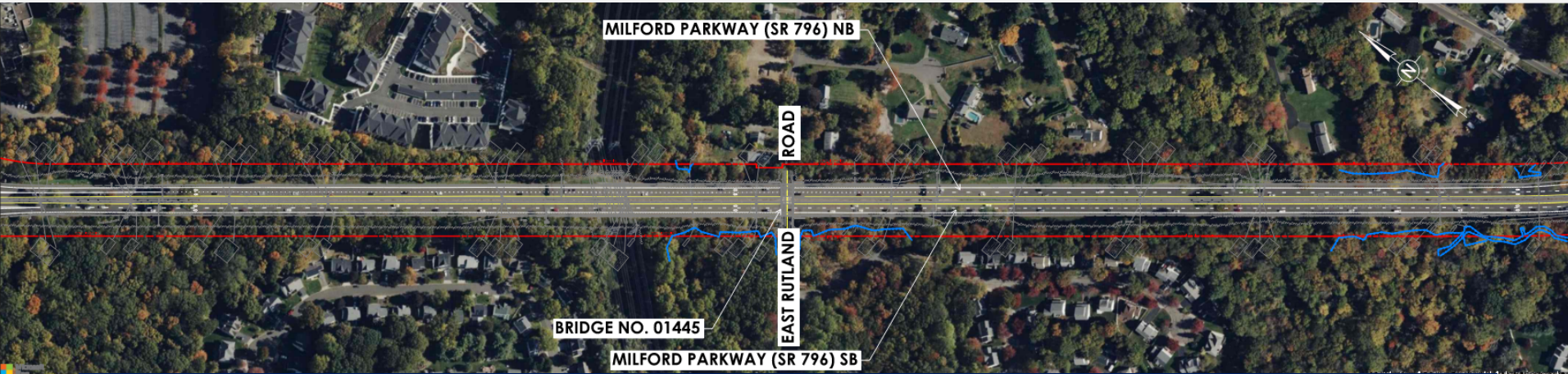
NON FIXED OBJECT



OVERTURN OR ROLLOVER

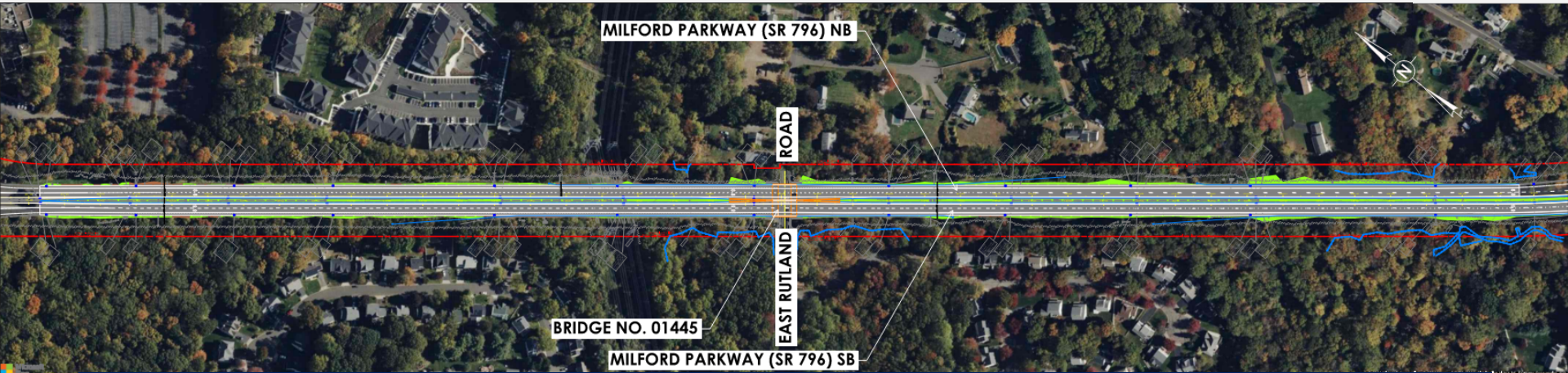


PROPOSED IMPROVEMENTS



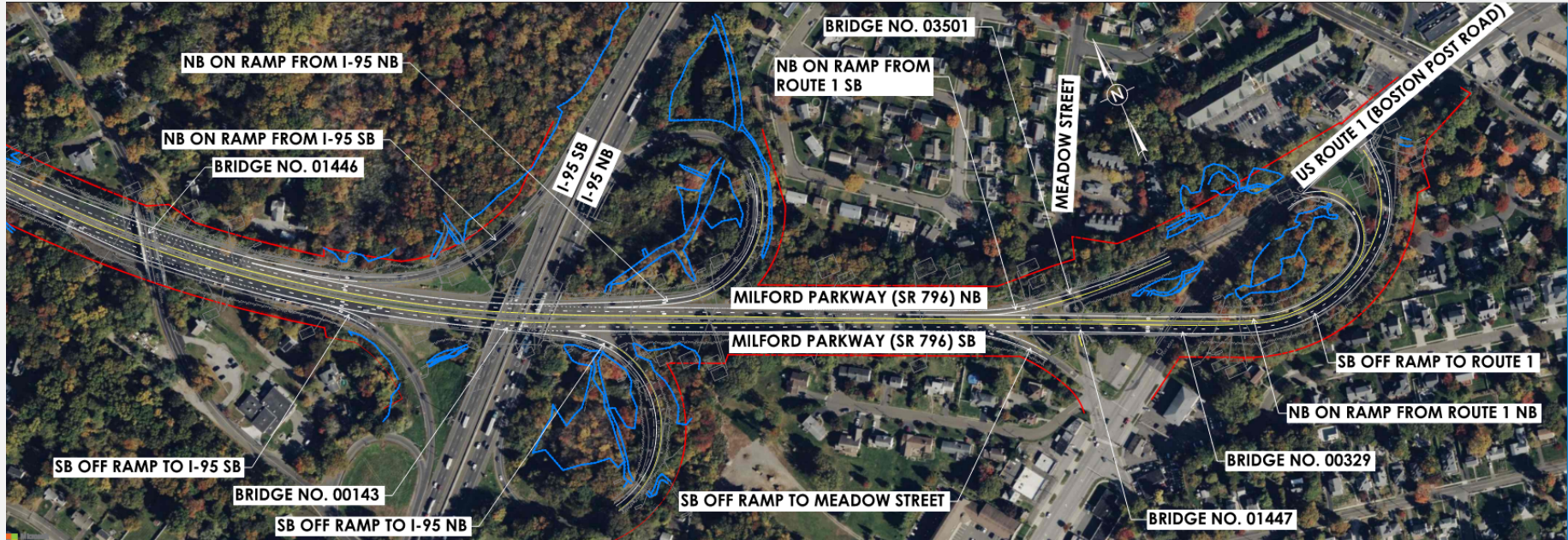
- Proposed Design Speed: 65 mph, Posted Speed Limit: 55 mph (matches existing condition)
- Pavement Rehabilitation/Resurfacing
 - 2" mill and overlay throughout project
- Superstructure Replacement at Bridge No. 01445
 - New steel multi-girder superstructure
 - Standard cross slopes and shoulder widths will be provided
- Upgrade roadside safety to current standards

PROPOSED IMPROVEMENTS



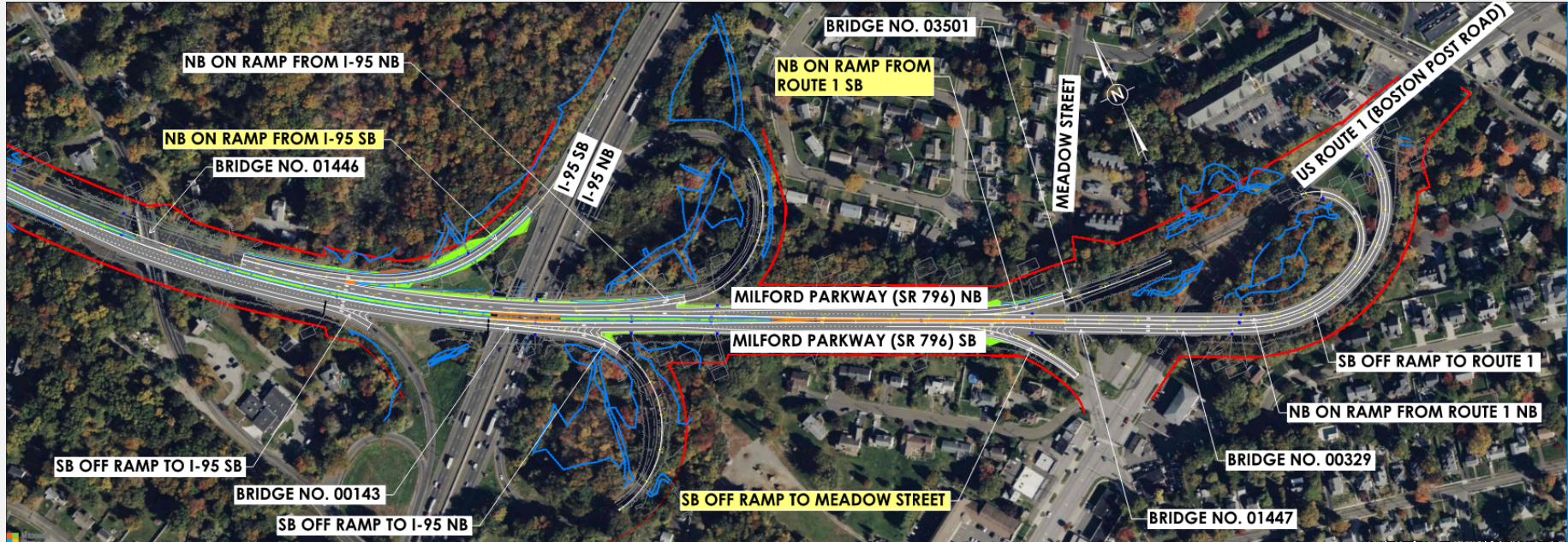
- Proposed Design Speed: 65 mph, Posted Speed Limit: 55 mph (matches existing condition)
- Pavement Rehabilitation/Resurfacing
 - 2" mill and overlay throughout project
- Superstructure Replacement at Bridge No. 01445
 - New steel multi-girder superstructure
 - Standard cross slopes and shoulder widths will be provided
- Upgrade roadside safety to current standards

PROPOSED IMPROVEMENTS



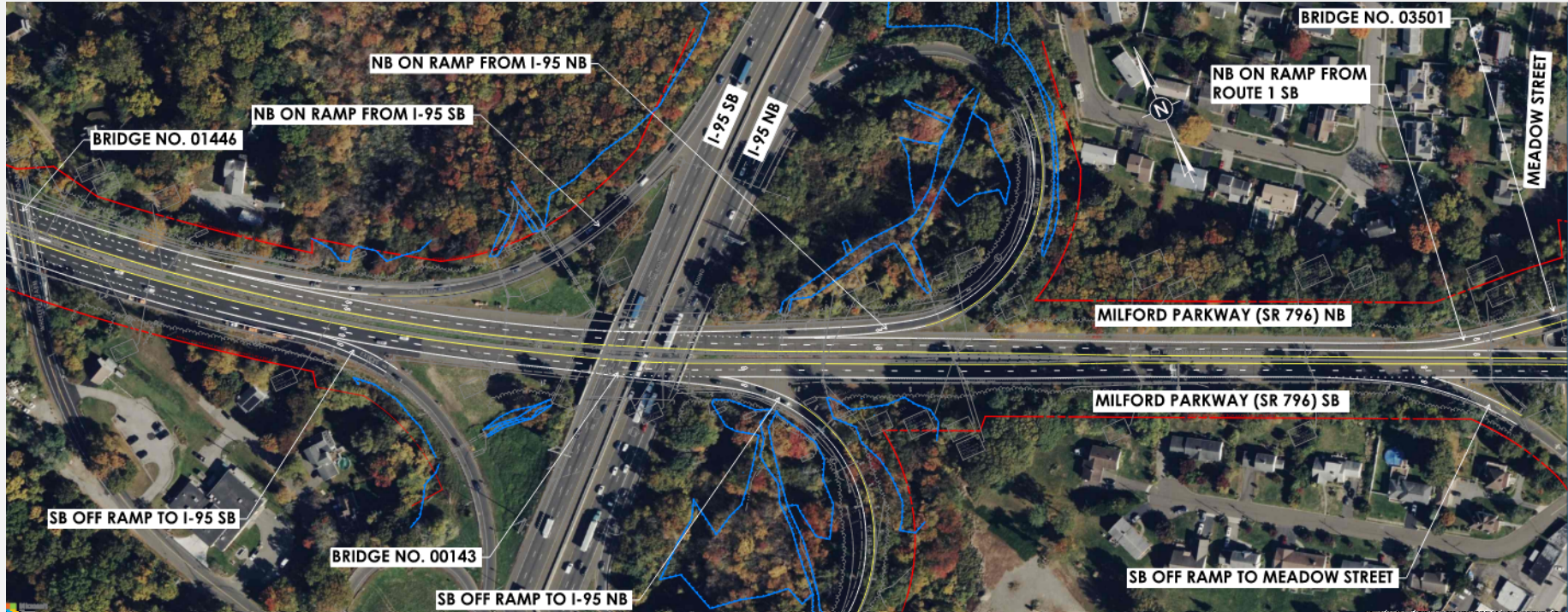
- Cross slope corrections at the following ramps:
 - NB On Ramp from Route 1 SB
 - NB On Ramp from I-95 SB
 - SB Off Ramp to Meadow Street

PROPOSED IMPROVEMENTS



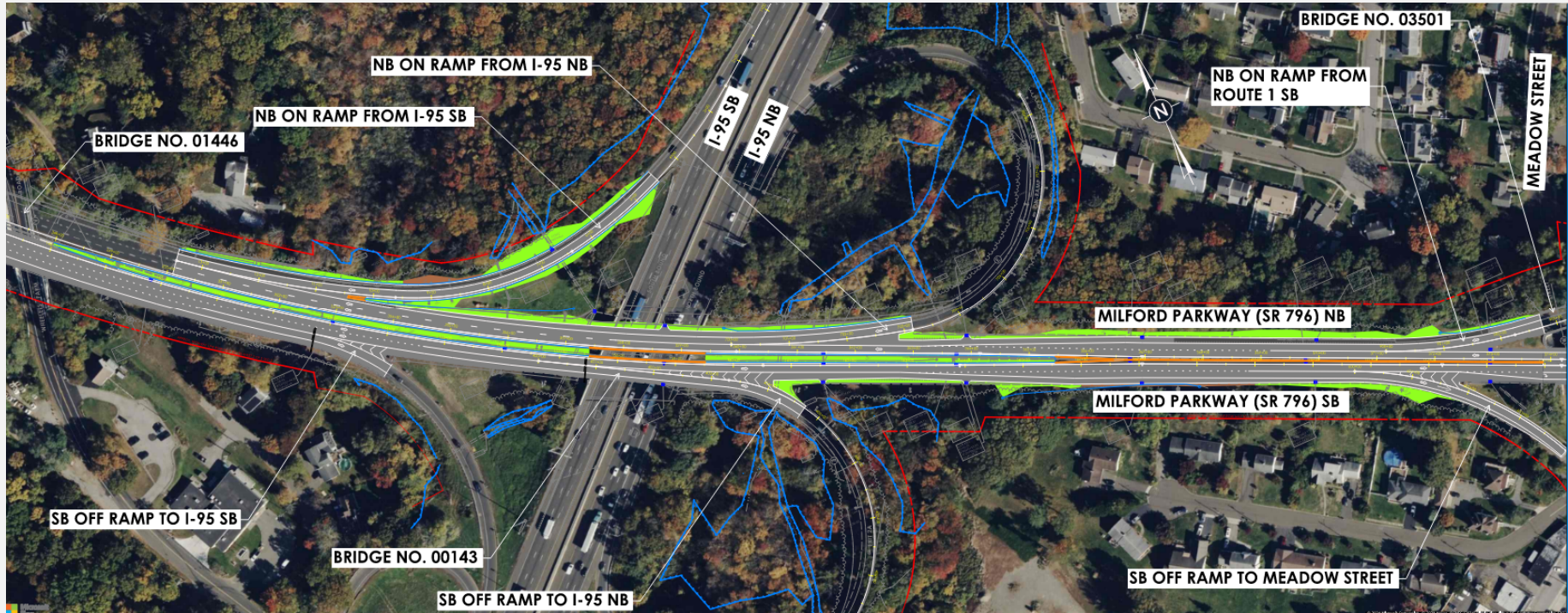
- Cross slope corrections at the following ramps:
 - NB On Ramp from Route 1 SB
 - NB On Ramp from I-95 SB
 - SB Off Ramp to Meadow Street

PROPOSED IMPROVEMENTS



- Lengthen acceleration and deceleration lanes at substandard ramps
- Lane configuration modifications at the I-95 NB, Route 1, and Meadow Street ramps
- Median concrete barrier reconstruction

PROPOSED IMPROVEMENTS



- Lengthen acceleration and deceleration lanes at substandard ramps
- Lane configuration modifications at the I-95 NB, Route 1, and Meadow Street ramps
- Median concrete barrier reconstruction

PROPOSED IMPROVEMENTS BRIDGE NO. 01445



- New steel multi-girder superstructure
- Parapets and fascia beams will match existing architectural details

PROPOSED IMPROVEMENTS



- Five new overhead/cantilever signs
- Six existing light standards and luminaires will be replaced
- Sign relocations
- Restriping pavement markings
- Utility relocation at Bridge No. 01445
- No ROW impacts due to highway work
 - Construction easements (Bridge No. 01445)



STAGE CONSTRUCTION



Staging Design Criteria

- Milford Parkway (SR 796): Two travel lanes, in each direction, required during peak periods
- Ramps: One travel lane required during peak periods
- 2' minimum shoulder (1' minimum in restricted areas)
- Deceleration and acceleration lengths for on/off ramps shall not be less than the existing condition throughout construction

Entire project will be constructed in stages.

DETOUR – EAST RUTLAND ROAD



- Daytime closures 7:00 am to 3:00 pm
- Monday-Friday
- 1.9 Miles
- Coordination with City, Transit and Emergency Services will occur in Final Design

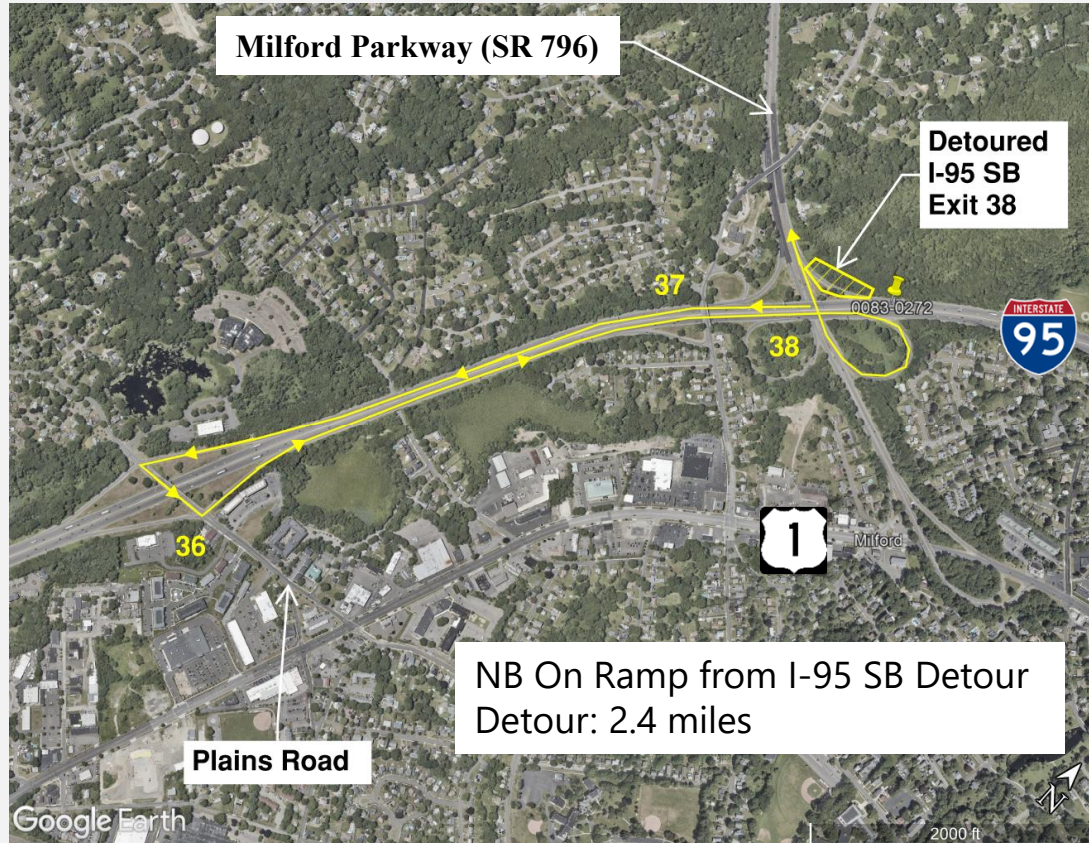
Following Roads Will Be Used in Detour

East Rutland Road

Oronoque Road

Wheeler's Farm Road

RAMP DETOURS



Ramp Detours:

- 8 Ramp Detours have been developed
- Nighttime closures 9:00 pm to 4:00 am
- Monday-Friday
- Coordination with City, Transit and Emergency Services will occur in Final Design

Following Roads Will Be Used in Detour

I-95 NB & SB

I-95 Exit 38 and 36 On and Off Ramps

Plains Road

COORDINATION AND PERMITS



COORDINATION

- US Fish and Wildlife Services
- State Historic Preservation Officer coordination for Bridge No. 01445 over East Rutland Road

EXPECTED PERMITS

- CTDEEP General Permit for the Discharge of Stormwater and Dewatering Wastewater from Construction Activities

SCHEDULE AND COST

- Estimated Construction Cost - \$25.4 million
- Funding Source - 80% Federal / 20% State
- Final Design Plans – September 2025
- Advertising for Bid – November 2025
- Construction Start – Spring 2026



Question & Answer Session



By Email: DOTProject0083-0273@ct.gov



By Phone: (860) 594-2020



On Zoom: Q&A



Project Webpage:

<https://portal.ct.gov/DOTMilford0083-0273>

A screenshot of a web-based Q&A interface. At the top, it says 'Q&A' with a blue icon. Below that are two tabs: 'All questions (1)' and 'My questions'. A user named 'Lee' has posted a question at 01:54 PM: 'Will there be a follow-up session?'. There is a thumbs-up icon and a 'Comment' button. At the bottom, there is a text input field with the placeholder 'Type your question here...'.

Moderator will answer questions
in Zoom Q&A function

Note: Comment period is open through **February 12, 2025***

*Zoom Q&A is only available during live Q&A session

