

Contact Information



DOT.GoldStarBridgeProjects@ct.gov



@GoldStar_i95_NB



Gold Star Memorial Bridge - Northbound

QR Code for Project Website



Contract Information



Contractor: MSR Gold Star Partners



Designer of Record: HNTB



Contract Administrator: Connecticut Department of Transportation, District 2



Construction Engineering & Inspection: GM2 Associates, Inc.



Start Date: Spring 2026



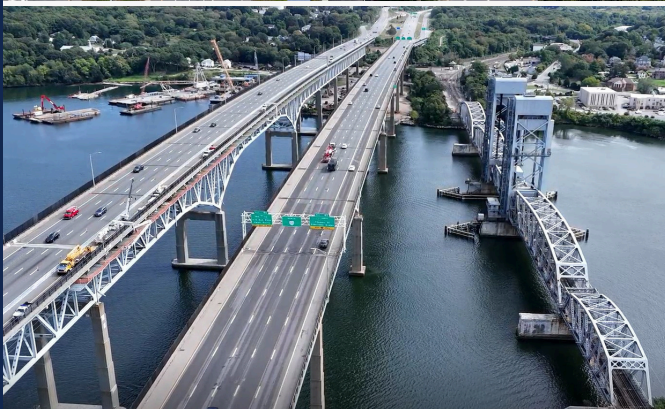
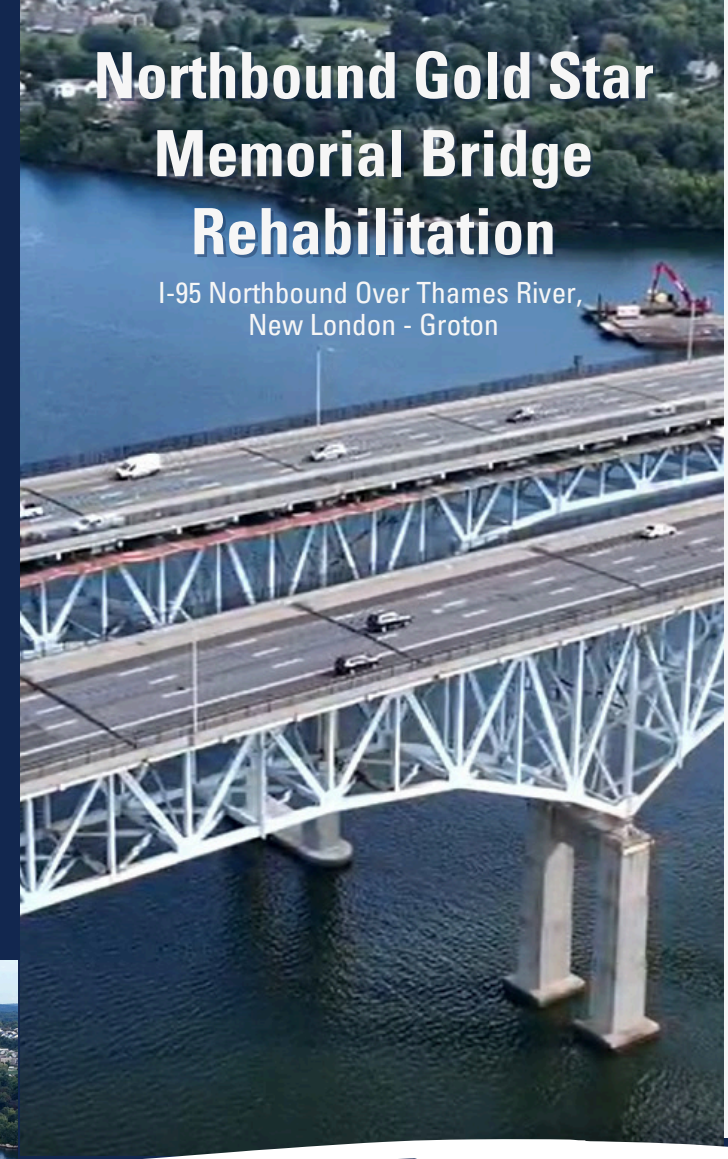
Estimated Completion Date: Fall 2030



Design & Construction Costs: \$900M

Northbound Gold Star Memorial Bridge Rehabilitation

I-95 Northbound Over Thames River,
New London - Groton



Why Rehabilitate the Bridge?

Structural Deterioration

The current bridge deck is 55 years old and needs replacement. Replacing it will extend the bridge's lifespan, ensure it meets today's more rigorous strength standards and restore the load capacity for permit vehicles.

The bridge superstructure requires structural repairs to increase its load rating to meet current standards and extend the service life of the bridge.

The bridge substructure requires preservation work to maintain a state of good repair and ensure it remains safe and reliable.

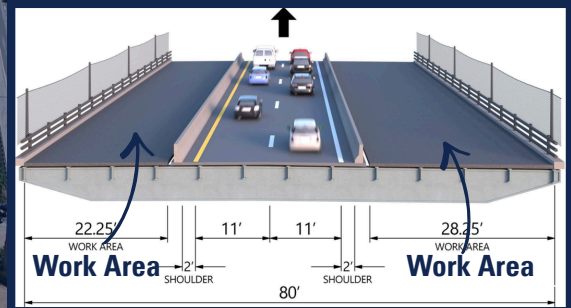
Permit Vehicle Access

The current bridge load rating prevents permit vehicle crossings, causing a detour of approximately 17 miles to these road users.

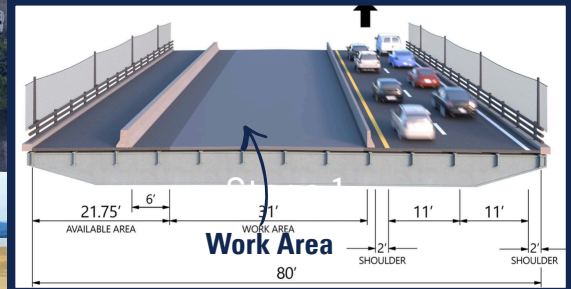
Planned Improvements

- Strengthen and repair structural steel members in the girder spans
- Replace select bearings on the girder spans and select bearing on the truss spans
- Replace existing bridge deck joints
- Replace existing parapet and fence with MASH compliant 3-rail steel barrier and stainless-steel mesh fence
- Replace concrete approach slabs
- Repair concrete substructures
- Install new bridge lighting
- Replace overhead sign structures
- Full superstructure painting

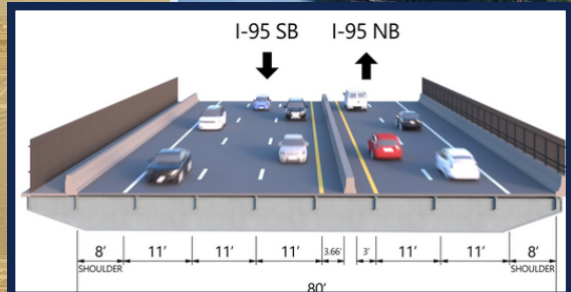
Stage 1: I-95 Northbound Bridge



Stage 2: I-95 Northbound Bridge



I-95 Southbound Bridge



The northbound bridge rehabilitation will be completed in two main stages to maintain the flow of traffic.

- Stage 1 consists of work on the outer sections of the northbound bridge deck.
- Stage 2 consists of work along the center of the northbound bridge deck.
- The I-95 southbound bridge will support both directions of I-95 for the duration of the project.