



State Project Number
0094-0267

State Project No. 0094-0267

Gold Star Memorial Bridge Shared Use Path/Pedestrian Improvements, City of New London and Groton

Hybrid Public Information Meeting

Live Event: Monday, June 24, 7:00 p.m.

Join us for a Question and Answer session following the formal presentation and send us a question or a comment during the session.

PROJECT EMAIL: DOT.GoldStarBridgeProjects@ct.gov

PHONE: (860) 594-2020 (voicemail only)

PROJECT WEBPAGE: <https://portal.ct.gov/DOTGoldStar94-267VPIM>



A recording of this presentation will be posted after the live event.

La grabación de esta presentación estará disponible después del evento en YouTube, incluyendo subtítulos y acceso a traducciones en otros idiomas



State Project No. 0094-0267:

Gold Star Memorial Bridge Shared Use Path/Pedestrian Improvements

Meeting Overview

- Housekeeping
- Project Purpose and Need
- Gold Star Bridge Projects Summary & Timeline
- Formal Presentation of Design
 - Explain existing conditions
 - Recommend a viable proposal (Design Plans are 30% complete)
 - Explain anticipated project benefits and impacts
- Open the Forum to your comments and questions



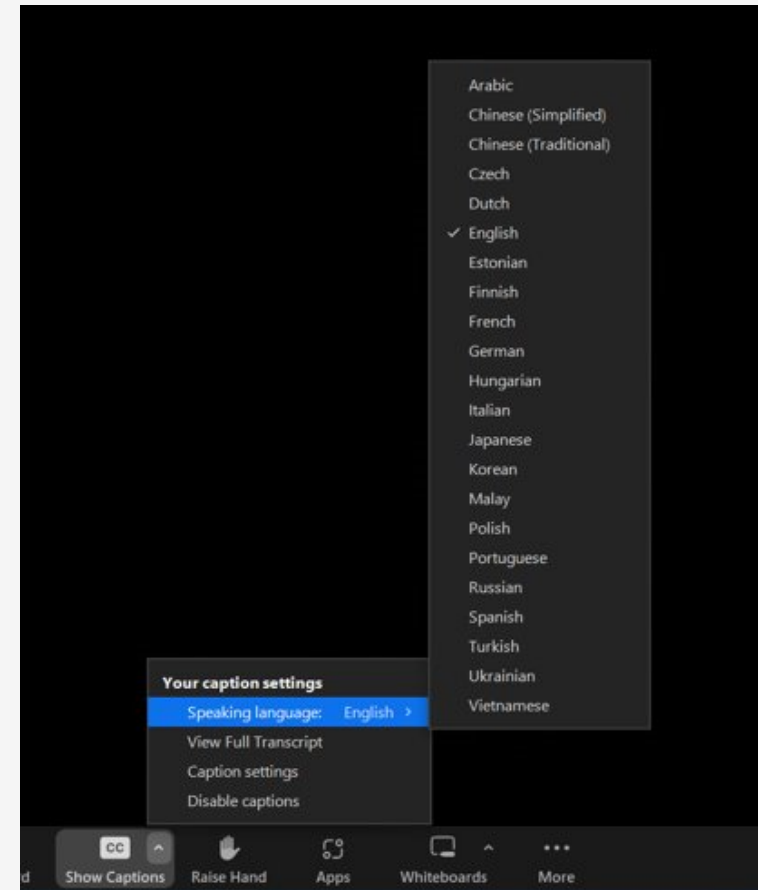
Tracey Brais, P.E.
Project Manager – CTDOT
Tel. No. (860) 594-3171
Tracey.Brais@ct.gov



How to view captions & subtitles in Zoom

1. Click Show Captions (CC).
2. Click the Speaking Language.
3. Select the language you would like from the list shown.

Closed captioning—including non-English translation options—are available on YouTube after the event.



Title VI – Your Civil Rights

No Person shall, on the basis of race, color or national origin, be excluded from participation or subject to discrimination in the development of this project.

- Voluntary Post-Meeting Survey:
 - <https://portal.ct.gov/ctdotsurvey>
- Civil Rights information:
 - <https://portal.ct.gov/DOT/Business/Office-of-Equity/Title-VI-Page>



A recording of this presentation will be posted to YouTube after the event.

Closed captioning—including non-English translation options—are available on Zoom and YouTube.





Connecticut Department of Transportation Title VI Notice to the Public

Individuals and organizations may file a complaint by completing the Title VI complaint form (<https://railroads.dot.gov/resource-center/title-vi-civil-rights-act-1964/title-vi-complaint-format>). Complaints should be signed and include contact information and should be sent to: Office of Civil Rights Federal Railroad Administration 1200 New Jersey Avenue, SE ROA-10, Mail Stop 5 Washington, DC 20590

The Connecticut Department of Transportation (CTDOT) operates its programs and services without regard to race, color, and national origin in accordance with Title VI of the Civil Rights Act. Any person who believes she or he has been aggrieved by any unlawful discriminatory practice under Title VI may file a complaint with the CTDOT.

For more information on the CTDOT's civil rights program, and the procedures to file a complaint, contact the CTDOT Title VI Coordinator at (860) 594-2169, TRS 711; Debra.Goss@ct.gov; or visit our administrative office at 2800 Berlin Turnpike, Newington, CT 06131. For more information, visit www.ct.gov/dot

A complainant may file a complaint directly with the Federal Transit Administration by filing a complaint with the FTA Office of Civil Rights, Attention: Title VI Program Coordinator, East Building, 5th Floor-TCR, 1200 New Jersey Ave., SE, Washington, DC 20590

A complainant may file a complaint directly with the Federal Highway Administration by filing a complaint with the FHWA Office of Civil Rights, Attention: Title VI Program Coordinator, 8th Floor E81-105, 1200 New Jersey Ave., SE, Washington, DE 20590

如需更多信息或免费语言协助，请致电 (860) 594-2109

Para información adicional, o asistencia lingüística gratuita, por favor llame al (860) 594-2109

Per informazioni aggiuntive o assistenza linguistica gratuita, chiamare il numero (860) 594-2109

Para obter mais informações, ou para auxílio gratuito em outro idioma, ligue para (860) 594-2109

Aby uzyskać dodatkowe informacje lub bezpłatną pomoc tłumacza, proszę dzwonić pod numer (860) 594-2109

Для получения подробной информации или бесплатных услуг перевода звоните по телефону (860) 594-2109

Pou jwenn plis enfòmasyon, oswa asistans ak lang gratis, ranpri rele (860) 594-2109

لمزيد من المعلومات أو للحصول على مساعدة لغوية مجانية، يرجى الاتصال بالرقم (860) 594-2109

Si vous souhaitez en savoir plus ou bénéficier d'une assistance linguistique gratuite, merci de composer le numéro suivant (860) 594-2109

अधिक जानकारी या निःशुल्क भाषा संबंधी सहायता के लिए कृपया (860) 594-2109 पर कॉल करें।

추가 정보가 필요하거나 무료 언어 지원이 필요하시면 (860) 594-2109로 전화하십시오

Để có thêm thông tin hoặc hỗ trợ ngôn ngữ miễn phí, vui lòng gọi (860) 594-2109



Individuals and organizations may file a complaint by completing the Title VI complaint form (<https://railroads.dot.gov/resource-center/title-vi-civil-rights-act-1964/title-vi-complaint-format>). Complaints should be signed and include contact information and should be sent to: Office of Civil Rights Federal Railroad Administration 1200 New Jersey Avenue, SE ROA-10, Mail Stop 5 Washington, DC 20590



Departamento de Transporte de Connecticut

Título VI Aviso al Público

- ◊ El Departamento de Transporte de Connecticut (CTDOT) se compromete a asegurar que ninguna persona sea excluida de participar en, o le sean negados los beneficios de, sus servicios de transporte basándose en la raza, color o país de origen de la persona protegida por el Título VI de la Ley de los Derechos Civiles. Si a usted le parece que ha sido objeto de discriminación en lo que corresponde al Título VI, puede presentar una queja al CTDOT.
- ◊ Para más información sobre el programa de derechos civiles del CTDOT y el proceso de presentar una queja, comuníquese con el Coordinadora del Título VI del CTDOT al teléfono (860) 594-2169, TRS 711; Debra.Goss@ct.gov. También puede visitar nuestra oficina administrativa en 2800 Berlin Turnpike, Newington, CT 06131. Para más información, visite www.ct.gov/dot.
- ◊ Un denunciante puede presentar una queja directamente ante la Federal Transit Administration si lo hace ante la FTA Office of Civil Rights, Attention: Title VI Program Coordinator, East Building, 5th Floor-TCR, 1200 New Jersey Ave., SE, Washington, DC 20590.
- ◊ Un denunciante podrá presentar una queja directamente ante la Federal Highway Administration si lo hace ante la FHWA Office of Civil Rights, Attention: Title VI Program Coordinator, 8th Floor E81-105, 1200 New Jersey Ave., SE, Washington, DC 20590.
- ◊ Para recibir más información o ayuda gratuita en otros idiomas, llame al (860) 594-2109.

Question & Answer Session



By Email: DOT.GoldStarBridgeProjects@ct.gov



By Phone: (860) 594-2020 (voicemail)



By Chat: Zoom Q&A

Questions will be posted to the Zoom chat



Project Webpage:

<https://portal.ct.gov/DOTGoldStar94-267VPIM>

Note: Comment period is open through **July 8, 2024**

*Zoom Q&A is only available during live Q&A session

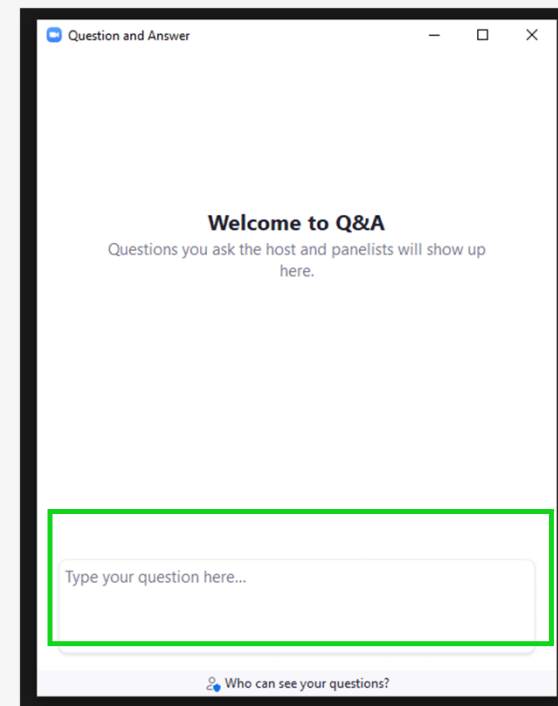
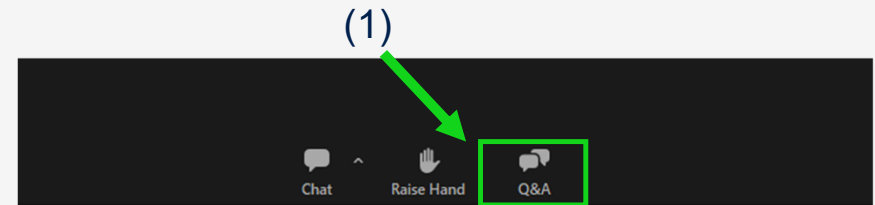
A screenshot of the Zoom Q&A interface. At the top, it says 'Q&A' with a blue speech bubble icon. Below that are two tabs: 'All questions (1)' and 'My questions'. A user named 'Lee' is shown with a timestamp of '01:54 PM'. The question is 'Will there be a follow-up session?'. There is a thumbs-up icon and a 'Comment' button. At the bottom, there is a text input field with the placeholder 'Type your question here...'.

Moderator will answer questions
in Zoom Q&A



How to use Zoom Q&A

- (1) Select the Q&A tool at the bottom of the Zoom webinar window.
- (2) The Q&A window will open as seen on the right.
- (3) Please type question in the textbox and click enter.
- If you are an audio only participant, dial *9 to raise and lower your hand.



Project Team – CTDOT Lead



Bart Sweeney,
P.E.
Division Chief
of Bridges
CTDOT



Bao Chuong, P.E.
Principal
Engineer
CTDOT



Tracey Brais, P.E.
Project Manager
CTDOT



Matthew
Geanacopoulos
Right-of-Way
Property Agent
CTDOT



Luis Alfonzo, P.E.
Project Engineer
CTDOT



Project Team – Close, Jensen and Miller, P.C.



Tom Ryan, P.E.
Project Manager



John Miller II, P.E., L.S.
Project Engineer



Michael Jacovino,
P.E.
Project Engineer



Project Team – BL Companies and HNTB



Steven Fraysier,
P.E.
Senior Project
Manager
(BL)



Jason Ellis, P.E.
Project Engineer
(BL)



Rudy
Franciamore, P.E.
Highway Lead
(HNTB)



David Giel, P.E.
Traffic Lead
(HNTB)



Samantha
Scharpf
Roundabout Lead
(HNTB)



Project Purpose & Need

PURPOSE: To provide multimodal transportation improvements between the Cities of New London and Groton.

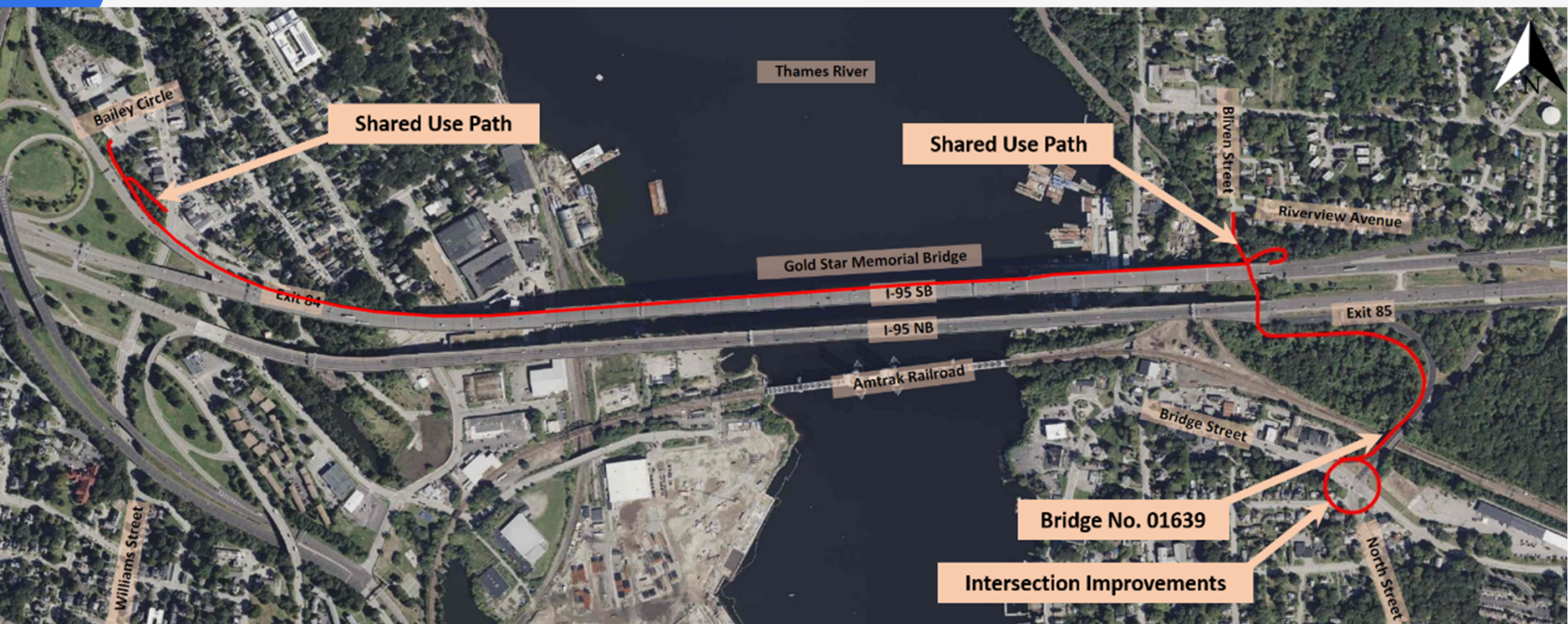
NEED: Current sidewalk width on Southbound Gold Star Bridge and approaches is 5 to 6 feet max.

- Reduces to 3.5 feet wide in some locations
- Does not provide minimum width recommended for bidirectional traffic
- Though prohibited, ATVs/mopeds frequently use the sidewalk

Improvements will also support revitalization plans proposed by Cities of New London and Groton

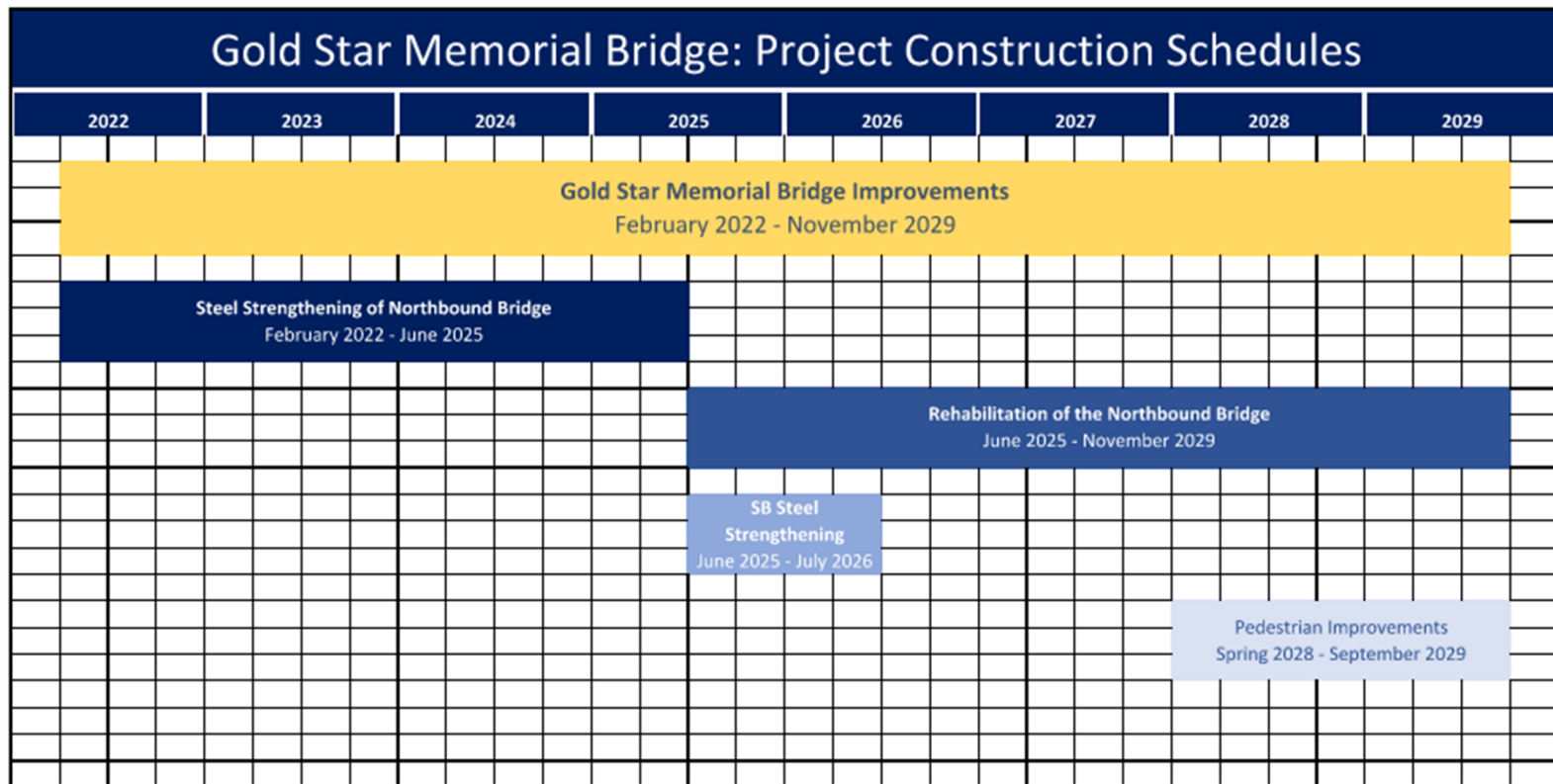


Project Overview



Gold Star Memorial Bridge Shared Use Path/Pedestrian Improvements // State Project No. 0094-0267

Gold Star Bridges Project Overview



For more information:

<https://portal.ct.gov/dot/bridges/project-pages/gold-star-memorial-bridge>



Gold Star Memorial Bridge Shared Use Path/Pedestrian Improvements // State Project No. 0094-0267

Bridging New London and Groton

**Shared Use Path
over the
Southbound
Gold Star Memorial Bridge**



Gold Star Memorial Bridge Shared Use Path/Pedestrian Improvements // State Project No. 0094-0267

Project Location



Gold Star Memorial Bridge Shared Use Path/Pedestrian Improvements // State Project No. 0094-0267

East Approach (Looking West)

TO BRIDGE STREET



TO
RIVERVIEW
AVE



Gold Star Memorial Bridge Shared Use Path/Pedestrian Improvements // State Project No. 0094-0267

West Approach from Bridge (Looking West)



TO
BAILEY CIR

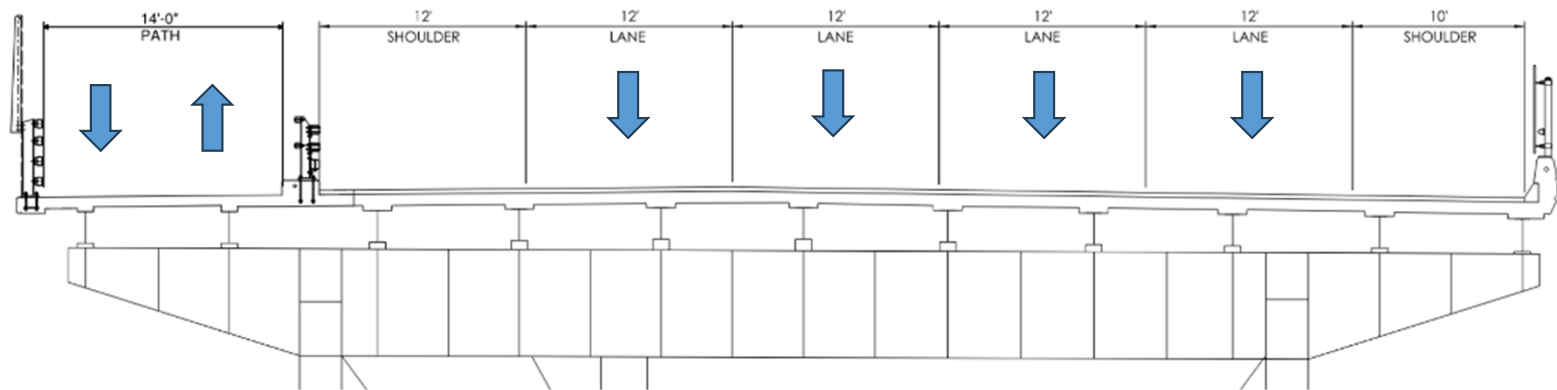


Gold Star Memorial Bridge Shared Use Path/Pedestrian Improvements // State Project No. 0094-0267

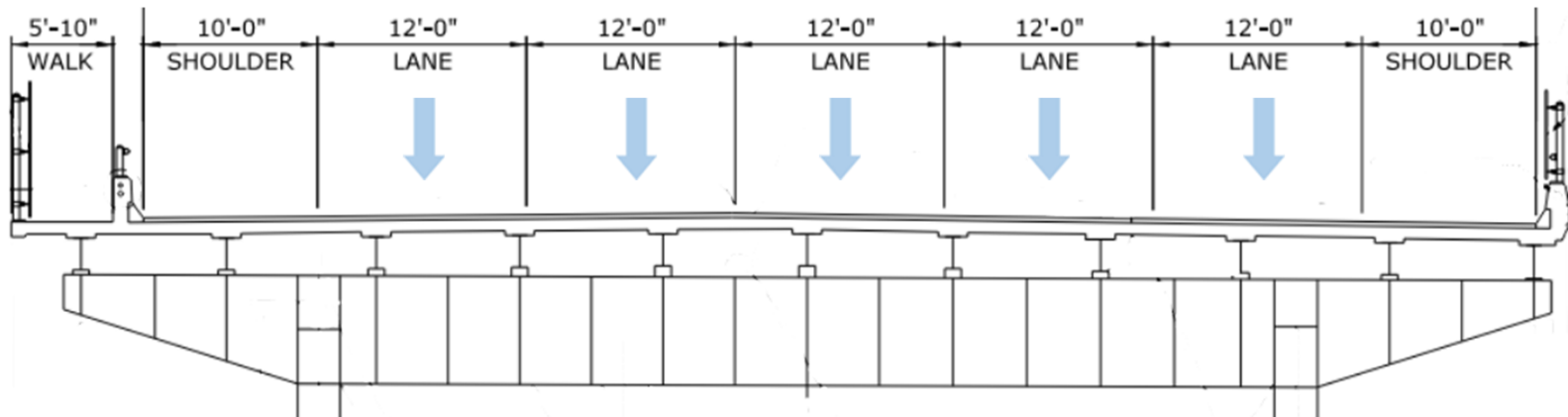
Proposed Traffic Reconfiguration - Typical

Convert one I-95 SB lane of vehicular traffic to achieve a 14' width shared use path

- Reduce I -95 to 4 Lanes with 12' Right and 10' Left Shoulders



PROPOSED TYPICAL BRIDGE SECTION

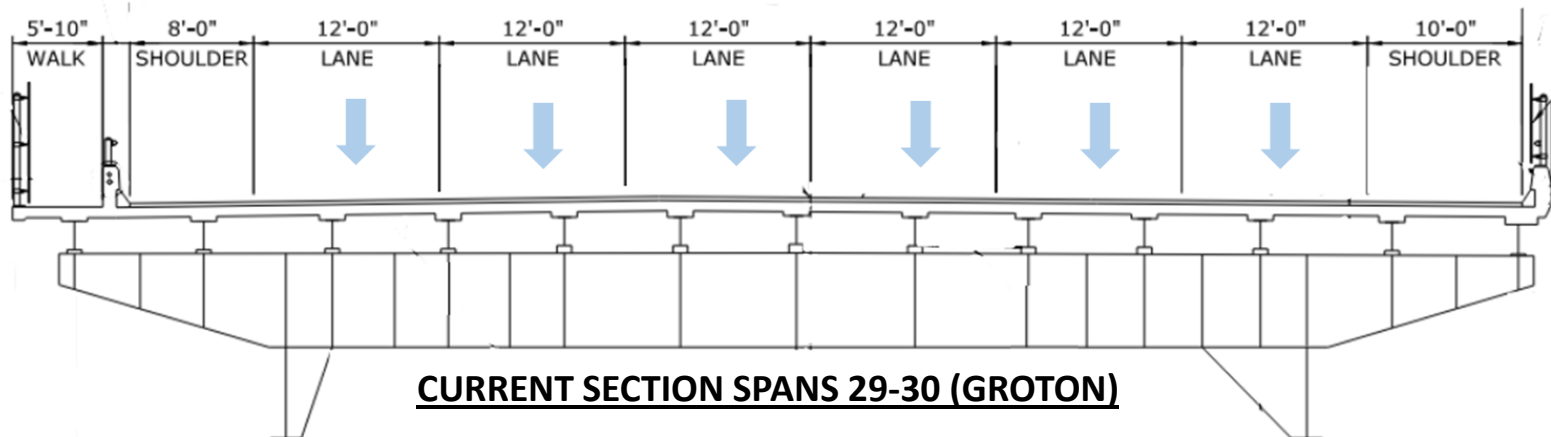
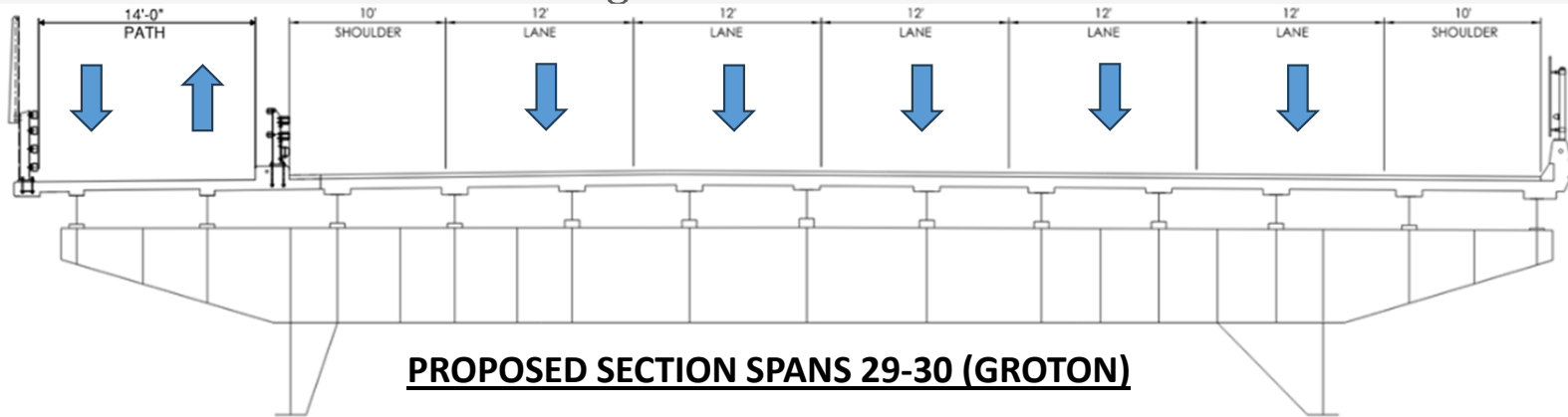


EXISTING TYPICAL BRIDGE SECTION

Proposed Traffic Reconfiguration – East End

Convert one I-95 SB lane of vehicular traffic to achieve a 14' width shared use path

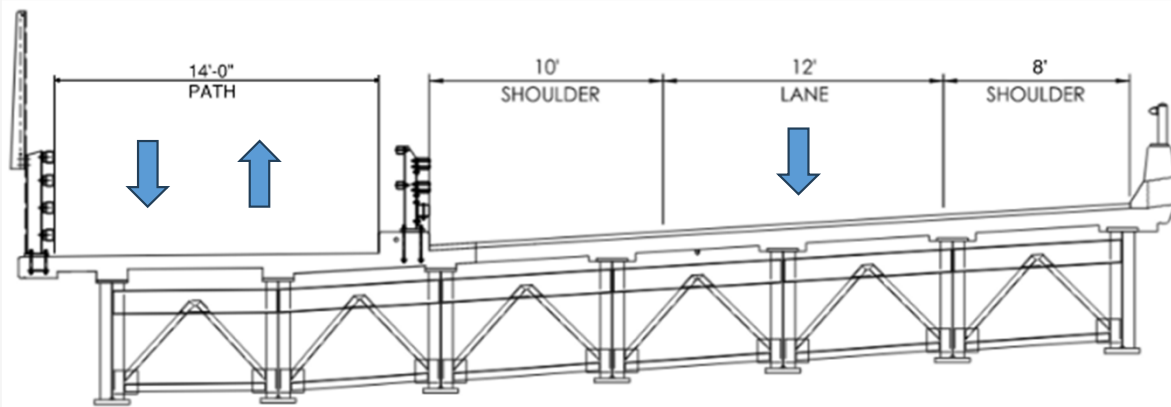
- Reduce the Bridge Street On Ramp to One Lane
- Reduce I - 95 to 5 Lanes with 10' Right and Left Shoulders



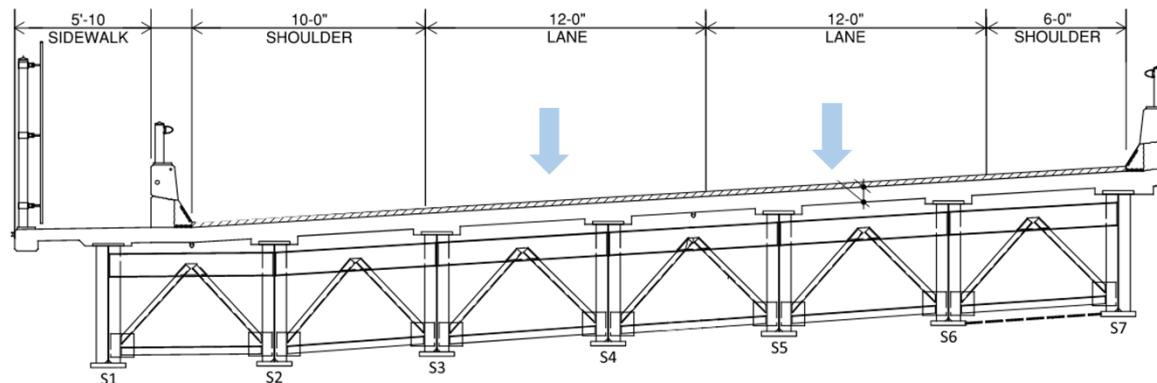
Proposed Traffic Reconfiguration – 02514B

Convert one I-95 SB lane of vehicular traffic to achieve a 14' width shared use path

- Reduce the Route 32/New London Off Ramp to One Lane with 10' Right and 8' Left Shoulders



PROPOSED SECTION BRIDGE 02514B (NEW LONDON)



CURRENT SECTION BRIDGE 02514B (NEW LONDON)

Proposed Path

PROPOSED TYPICAL PATH SECTION (14 ft max)

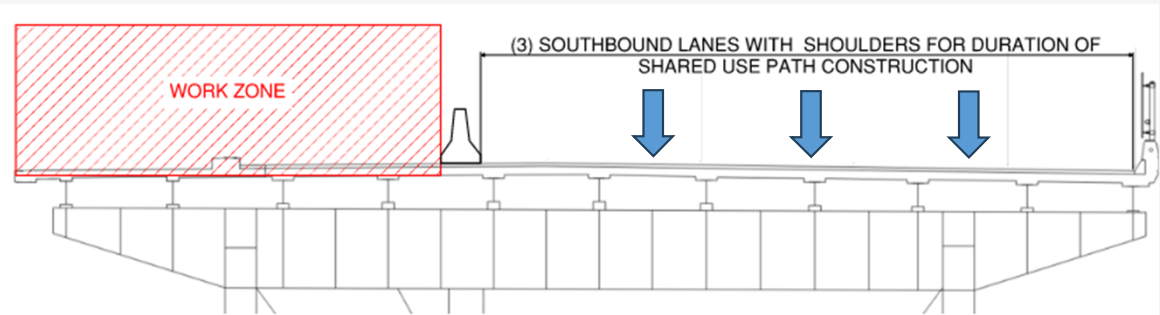


**PROPOSED TYPICAL PATH SECTION –
AT SIGN SUPPORT (11 ft min)**

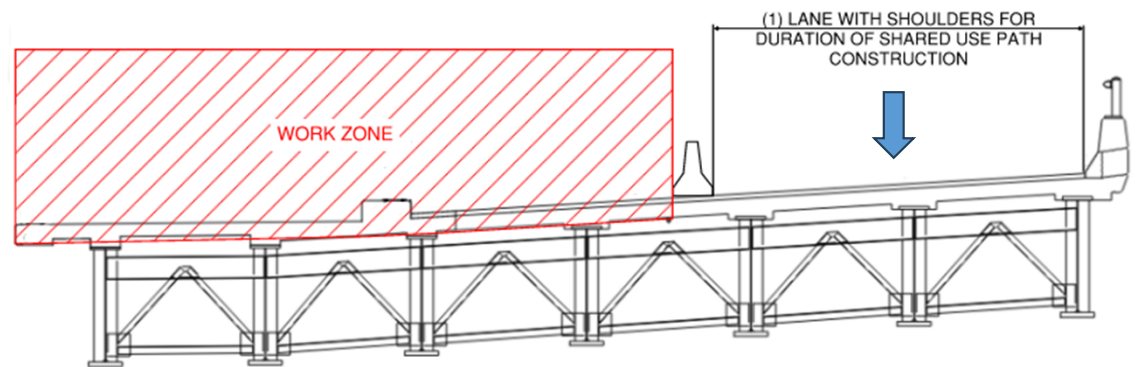


Maintenance and Protection of Traffic

- (3) Southbound lanes with shoulders on 02514A
- (1) Ramp lane with shoulders on 02514B
- All work on bridges themselves: no major impacts to local roads below
 - Work platforms/debris shields will be installed which may require temporary lane shifts or traffic control below during setup.
- Path will remain closed on the bridge during construction for safety and efficiency, however alternative options to get across are in the planning process and will be provided (up to 1.5 years)



02514A PROPOSED TYPICAL SECTION DURING CONSTRUCTION



02514B PROPOSED TYPICAL SECTION DURING CONSTRUCTION

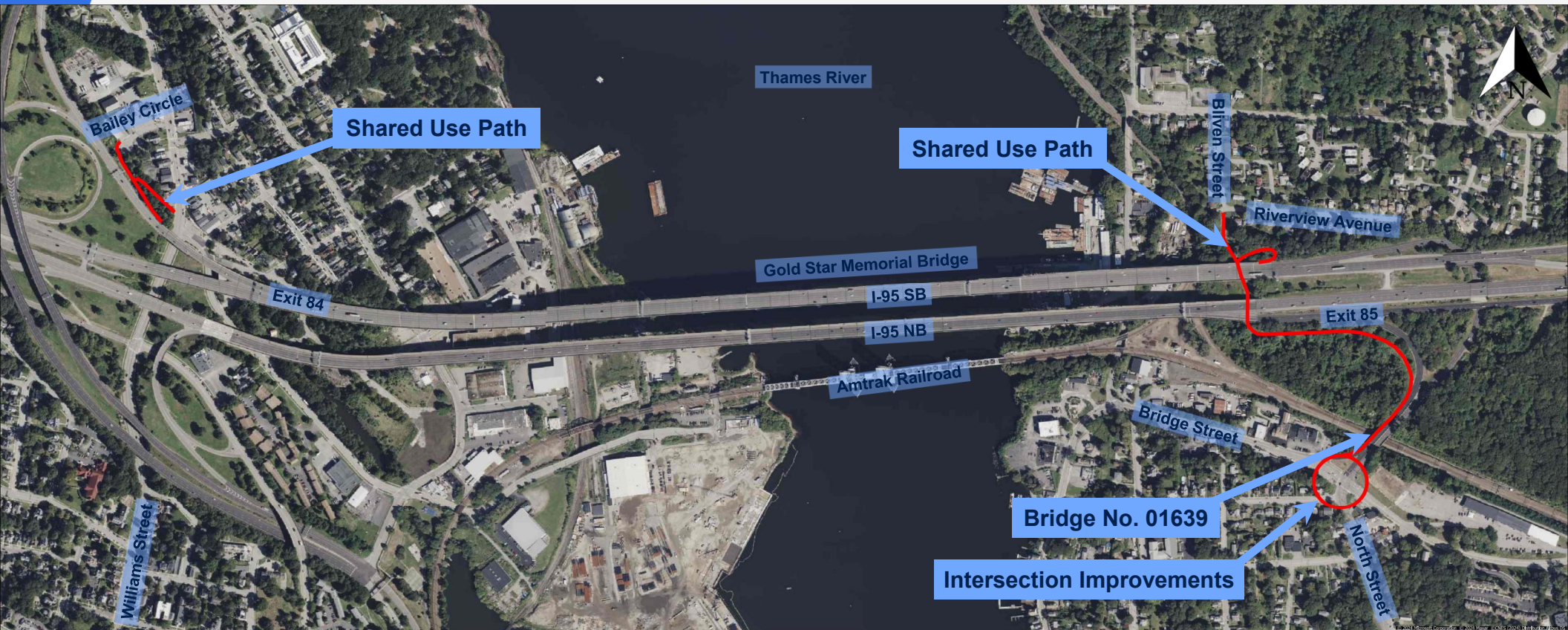


Approach Path and Roundabout

Gold Star Shared Use Path and Intersection Improvements



Project Overview



Gold Star Memorial Bridge Shared Use Path/Pedestrian Improvements // State Project No. 0094-0267

Existing Conditions – Shared Use Path

New London approach

- 5-foot wide concrete sidewalk.
- Gradual incline (3.5%) approaching the Gold Star Memorial Bridge.

Groton approach

- 5-foot wide concrete sidewalk.
- Area of steep incline (8.5%) and hairpin turn approaching the Gold Star Memorial Bridge.



Proposed Design – Shared Use Path – West Approach

New London Side

Rendering –
next slide



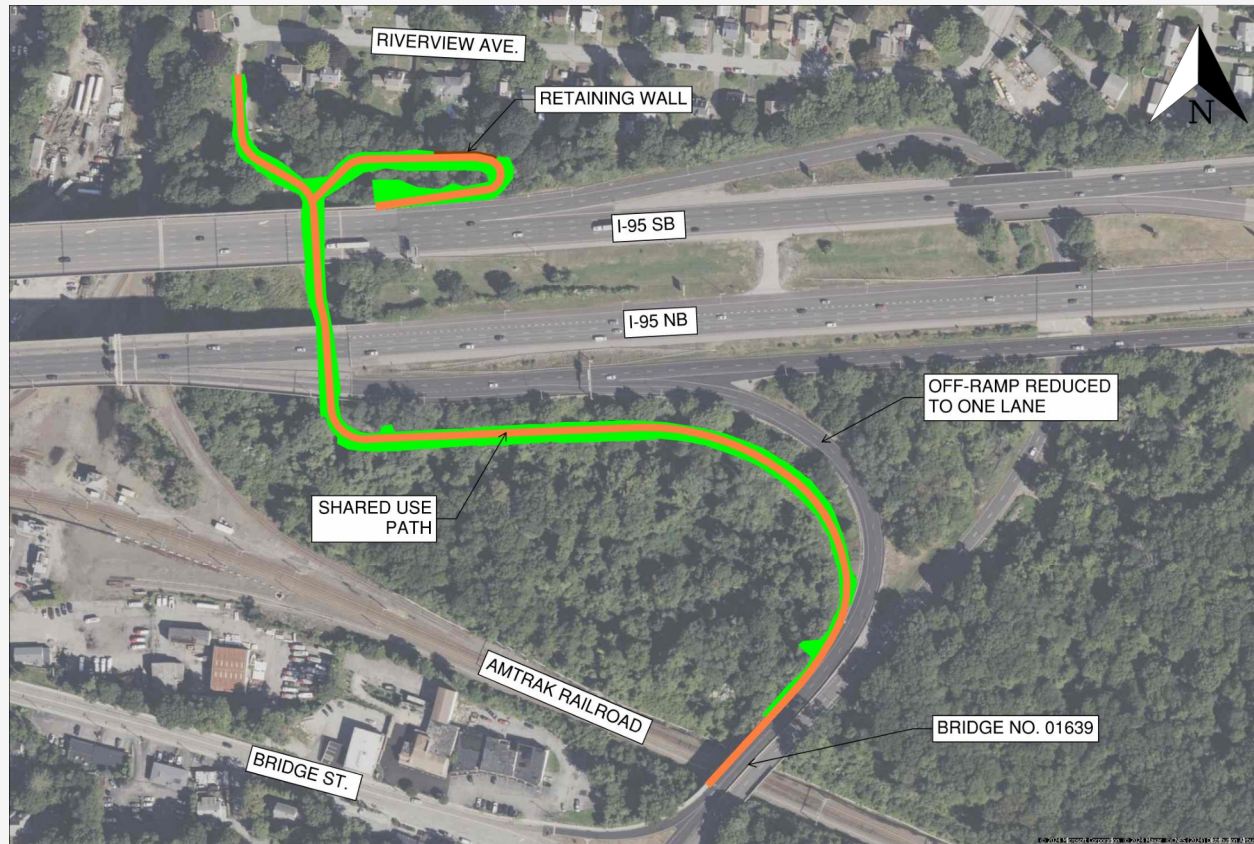
Proposed Design – Shared Use Path – West Approach



Gold Star Memorial Bridge Shared Use Path/Pedestrian Improvements // State Project No. 0094-0267

Proposed Design – Shared Use Path – East Approach

Groton Side



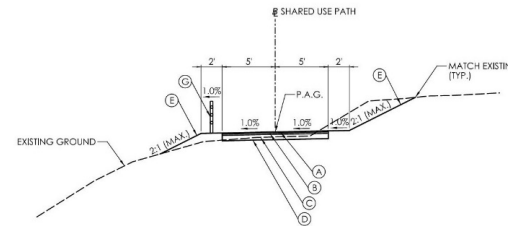
Gold Star Memorial Bridge Shared Use Path/Pedestrian Improvements // State Project No. 0094-0267

Proposed Design – Shared Use Path – Approaches to Southbound Gold Star Bridge

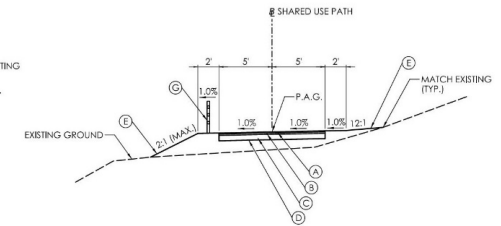
- 10' wide paved Shared Use Path.
- 2' wide grass shoulders.
- Three Rail Wood fence where warranted.
- Single Slope Concrete Barrier adjacent to I-95 at approaches to Gold Star Memorial Bridge

LEGEND

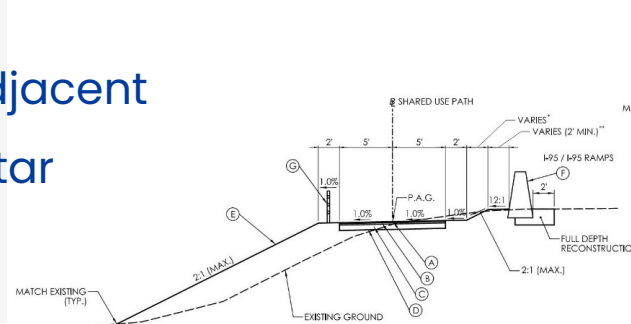
- (A) 1.25" HMA S0.25 (TRAFFIC LEVEL 1)
- (B) 1.5" HMA S0.375 (TRAFFIC LEVEL 1)
- (C) 6" PROCESSED AGGREGATE BASE
- (D) FORMATION OF SUBGRADE
- (E) 4" TOPSOIL & TURF ESTABLISHMENT
- (F) SINGLE SLOPE PRECAST CONCRETE BARRIER (42" HIGH)
- (G) THREE RAIL WOOD FENCE



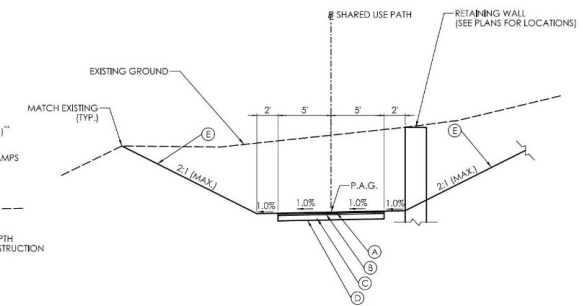
SHARED USE PATH - WEST
STA. 100+00 TO STA. 105+25
STA. 150+00 TO STA. 153+60



SHARED USE PATH - EAST
STA. 203+75 TO STA. 221+96



*STA. 10+00 TO STA. 12+00
**STA. 10+00 TO STA. 12+00 AND STA. 203+00 TO STA. 203+75
SHARED USE PATH - EAST
STA. 10+00 TO STA. 12+00
STA. 201+50 TO STA. 203+75



SHARED USE PATH - EAST
STA. 12+00 TO STA. 16+19



Bridge No. 01639 – (Amtrak Bridge)

- Carries Bridge Street I-95 NB Off-Ramp and I-95 SB On-Ramp over Amtrak Railroad.
- Superstructure constructed in 1999.
- Partial reconstruction of bridge deck.
- Reduce Off-Ramp to single lane.
- Raised concrete buffer between path and Off-Ramp



Proposed Design – Bridge No. 01639 (Amtrak Bridge)



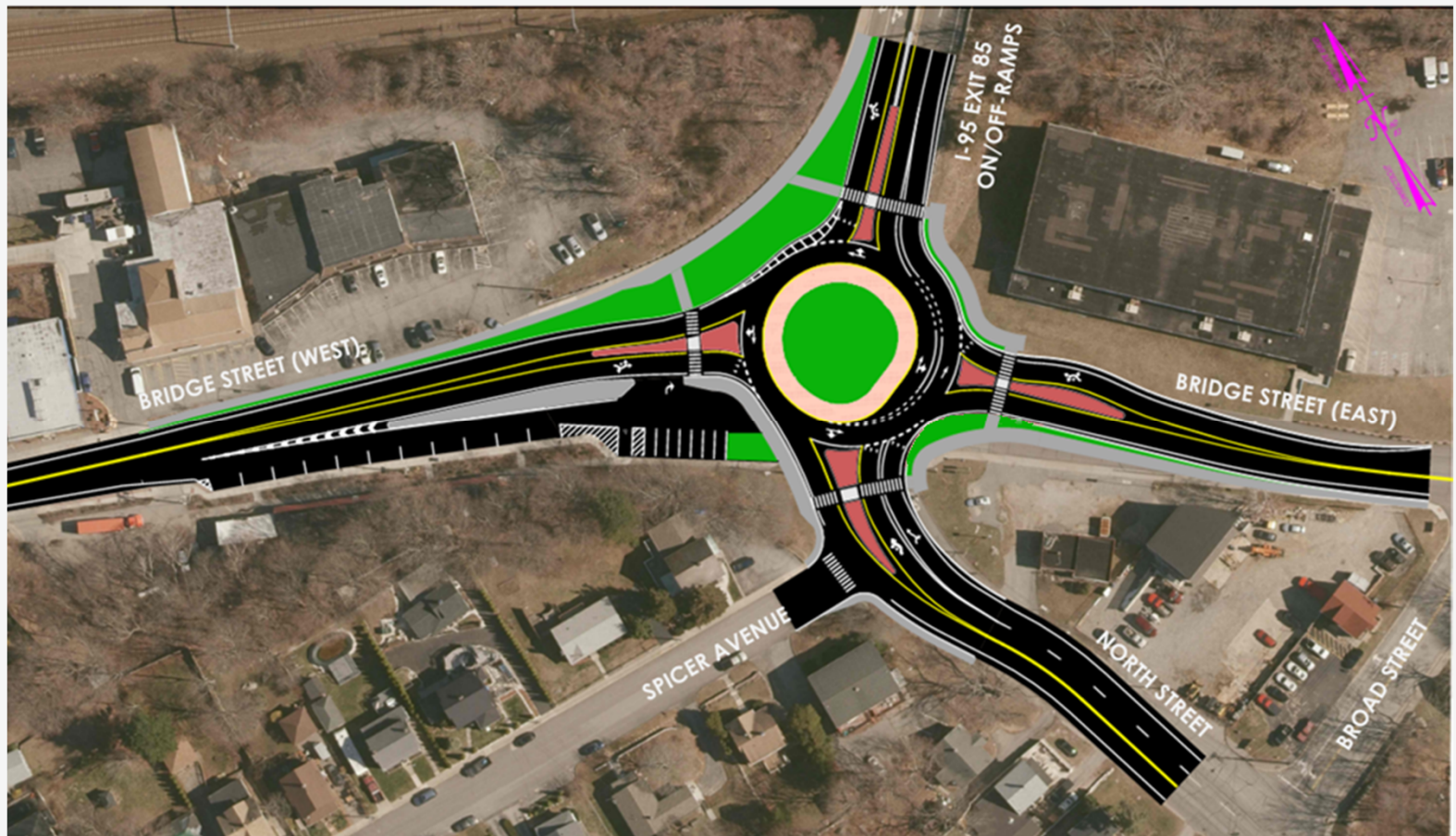
Gold Star Memorial Bridge Shared Use Path/Pedestrian Improvements // State Project No. 0094-0267

Existing Conditions – Intersection Improvements



Gold Star Memorial Bridge Shared Use Path/Pedestrian Improvements // State Project No. 0094-0267

Proposed Design – Intersection Improvements



Gold Star Memorial Bridge Shared Use Path/Pedestrian Improvements // State Project No. 0094-0267

Intersection Improvements – Birds Eye View



Gold Star Memorial Bridge Shared Use Path/Pedestrian Improvements // State Project No. 0094-0267

Intersection Improvements – Street View

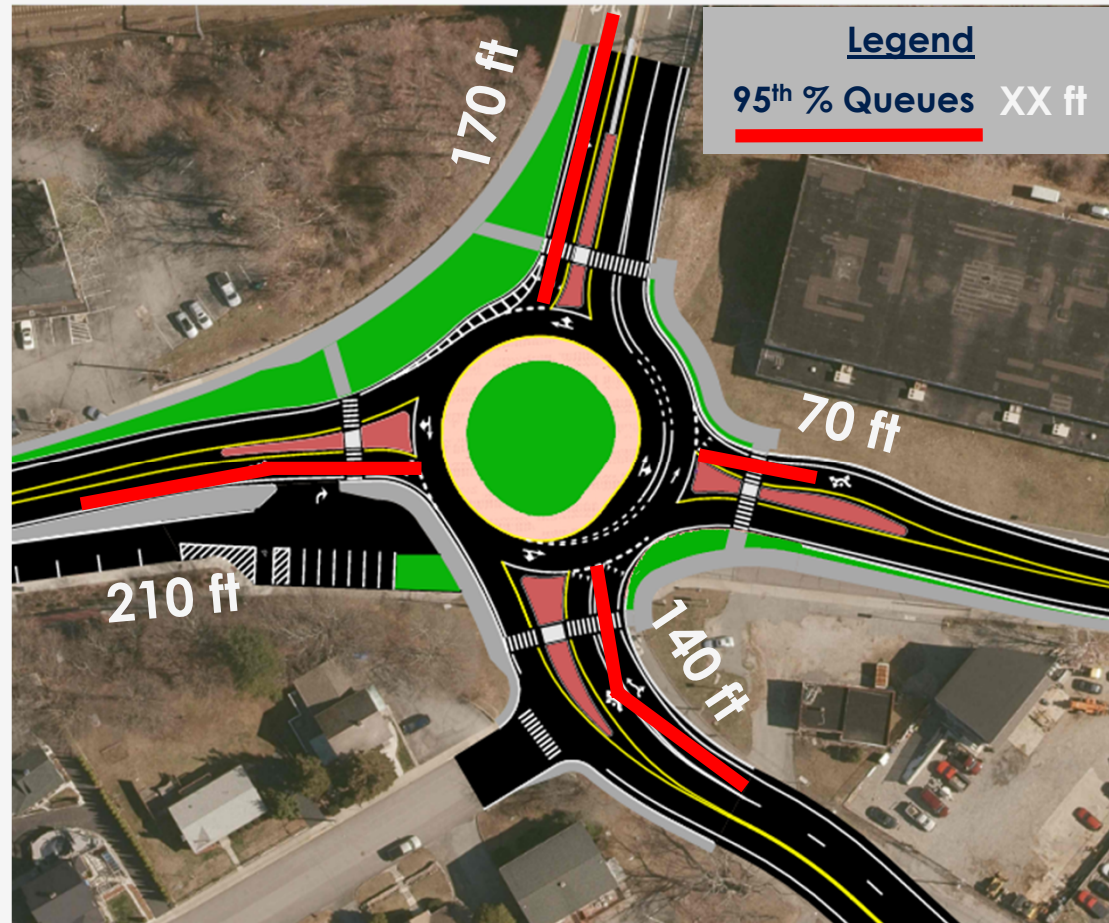


Gold Star Memorial Bridge Shared Use Path/Pedestrian Improvements // State Project No. 0094-0267

Traffic Analysis

2053 Future Year

| Approach | Weekday AM Peak Hour | | | | Weekday PM Peak Hour | | | |
|----------|----------------------|-----|---------------------|---------------------|----------------------|-----|---------------------|---------------------|
| | Delay (s) | LOS | Queue (50th %) (ft) | Queue (95th %) (ft) | Delay (s) | LOS | Queue (50th %) (ft) | Queue (95th %) (ft) |
| EB | 7.2 | A | 10 | 25 | 17.8 | C | 84 | 210 |
| WB | 5.5 | A | 6 | 15 | 22.0 | C | 27 | 68 |
| NB | 4.8 | A | 7 | 18 | 15.5 | C | 56 | 140 |
| SB | 13.4 | B | 69 | 170 | 11.0 | B | 50 | 125 |
| Overall | 9.8 | A | * | * | 13.3 | B | * | * |



Shared Use Path Construction – West Approach

New London

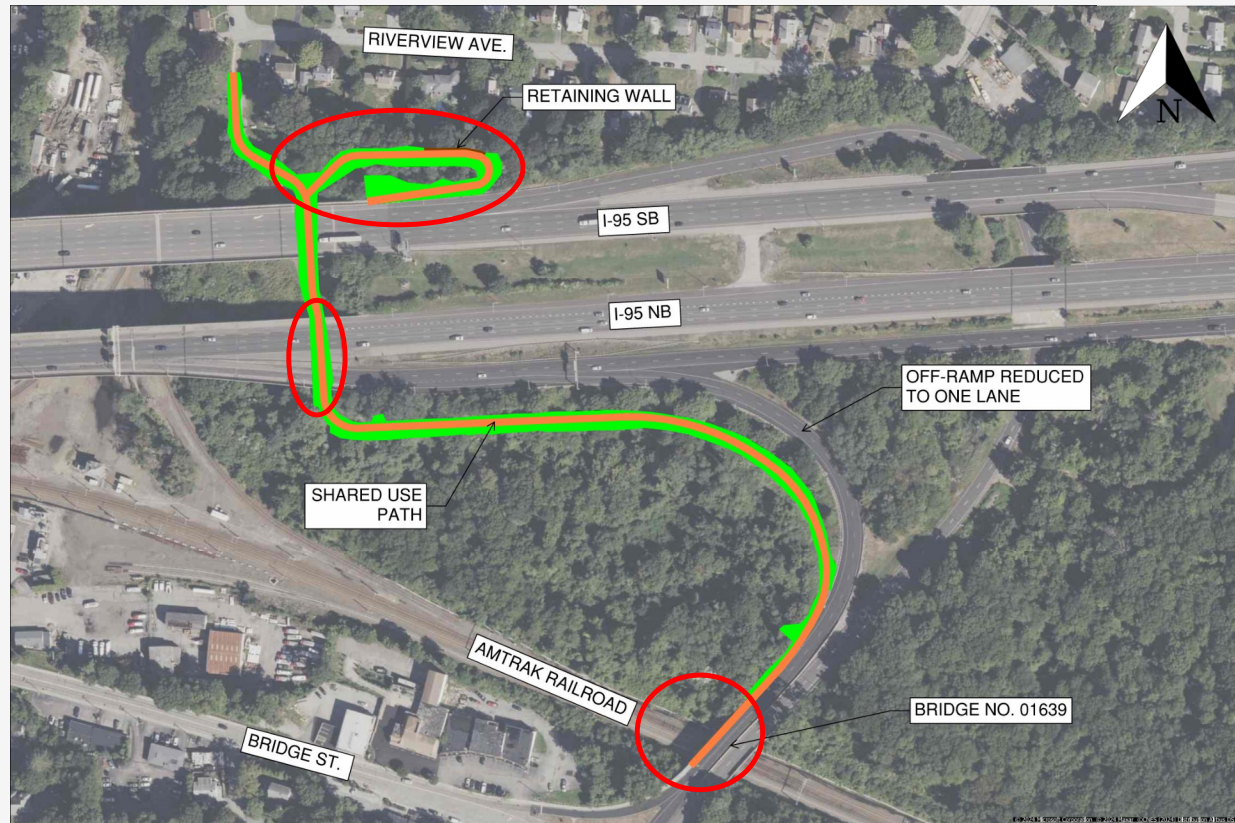
- Existing path closed during construction.
- Shuttle service to Groton provided.



Shared Use Path Construction – East Approach

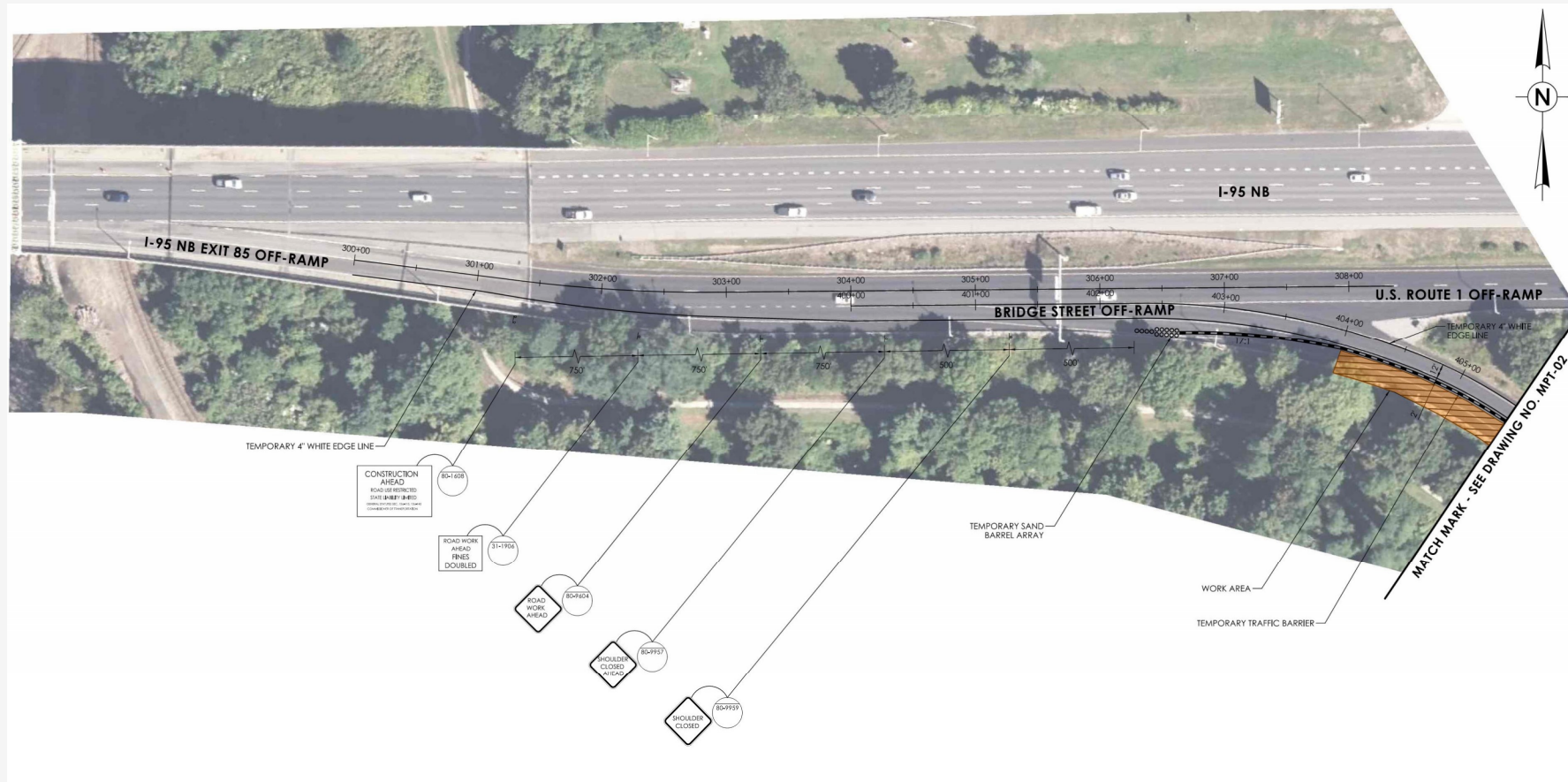
Groton

- Existing path to the Gold Star Bridge closed during construction.
- Existing path between Bridge Street and Riverview Avenue closed during construction as required.
- Shuttle service to New London provided during shut down.



Gold Star Memorial Bridge Shared Use Path/Pedestrian Improvements // State Project No. 0094-0267

Maintenance and Protection of Traffic – Off Ramp



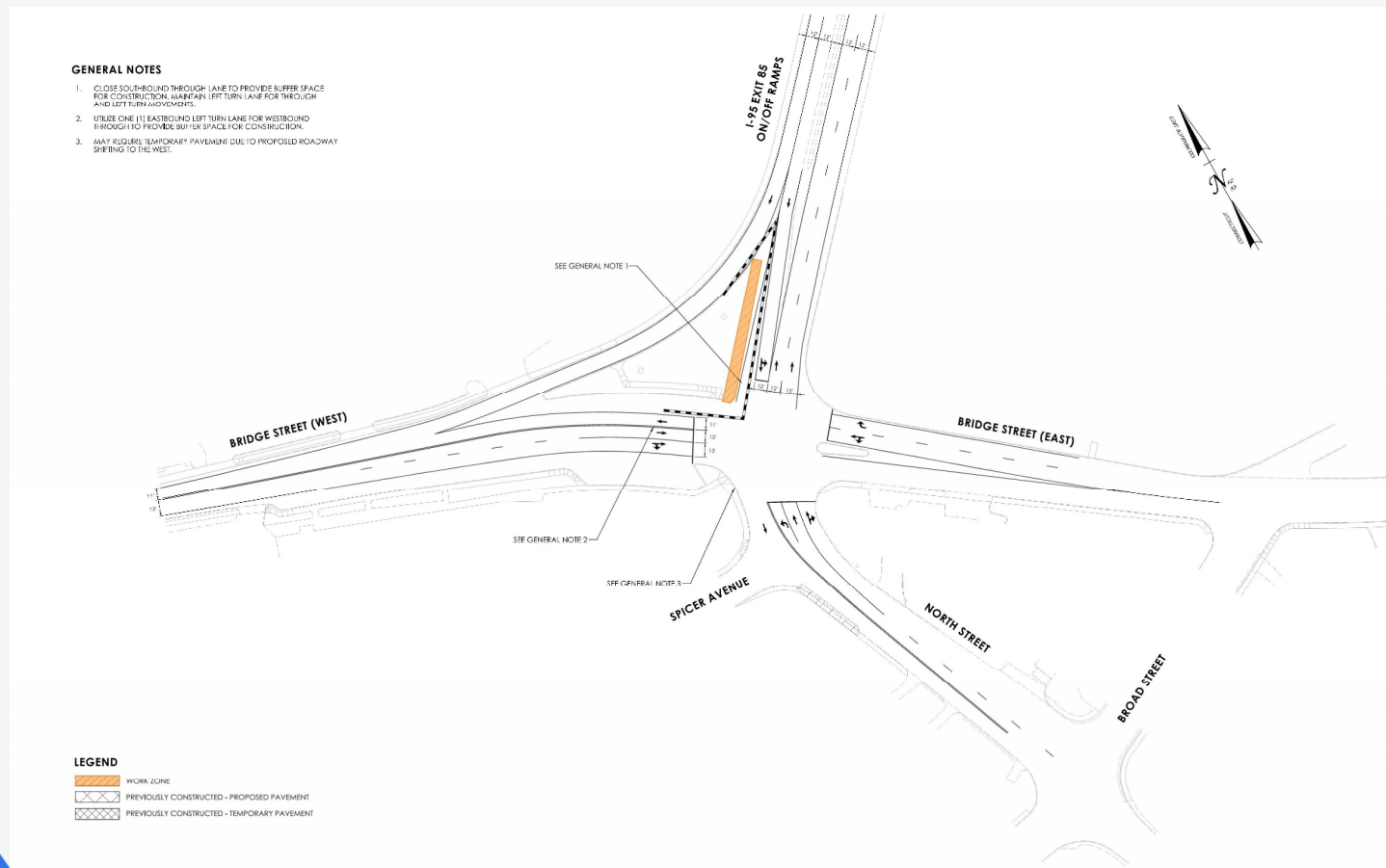
Gold Star Memorial Bridge Shared Use Path/Pedestrian Improvements // State Project No. 0094-0267

Maintenance and Protection of Traffic – Off Ramp



Gold Star Memorial Bridge Shared Use Path/Pedestrian Improvements // State Project No. 0094-0267

Staging – Intersection – Stage 1



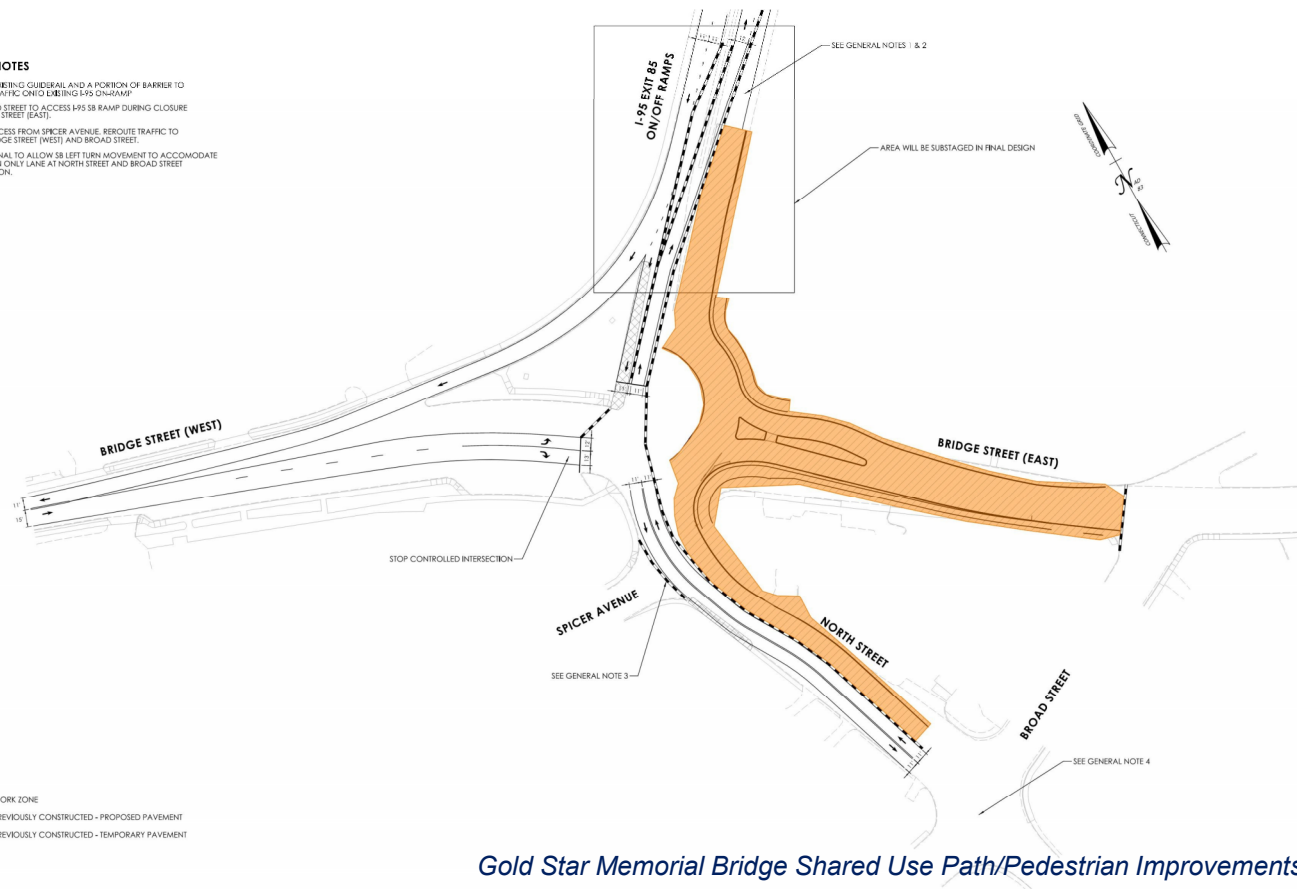
Staging – Intersection – Stage 2a

GENERAL NOTES

1. REMOVE EXISTING GUIDERAIL AND A PORTION OF BARRIER TO 518 FT NB TRAFFIC ONRAMP EXITS ON RAMP
2. USE BROAD STREET TO ACCESS I-75 SB RAMP DURING CLOSURE OF BRIDGE STREET (EAST).
3. CLOSE ACCESS FROM SPICER AVENUE, REROUTE TRAFFIC TO UTILIZE BRIDGE STREET (WEST) AND BROAD STREET.
4. REVERSE SIGNAL TO ALLOW SB LEFT TURN MOVEMENT TO ACCOMMODATE RIGHT TURN ONLY LANE AT NORTH STREET AND BROAD STREET INTERSECTION.

LEGEND

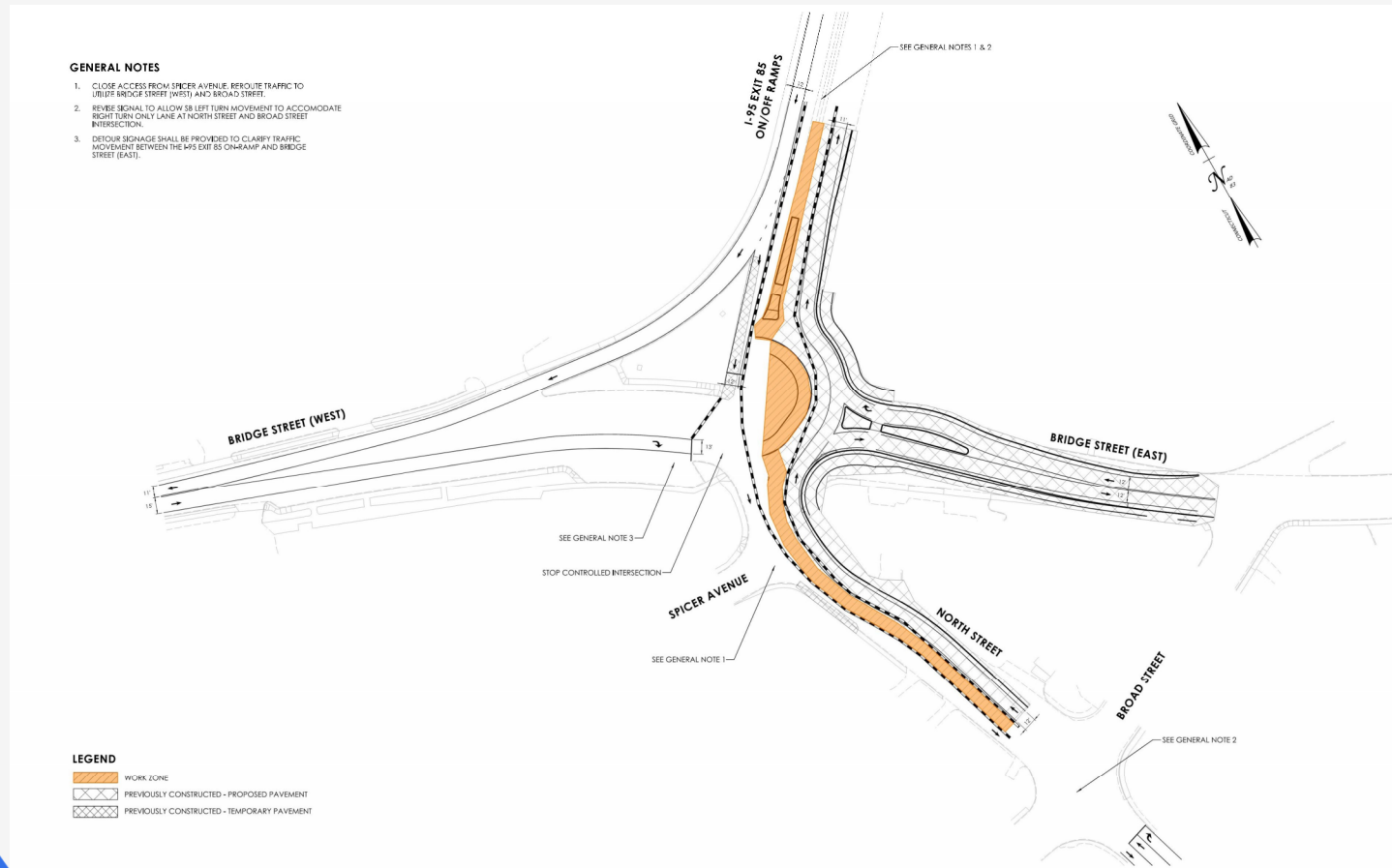
- WORK ZONE
- PREVIOUSLY CONSTRUCTED - PROPOSED PAVEMENT
- PREVIOUSLY CONSTRUCTED - TEMPORARY PAVEMENT



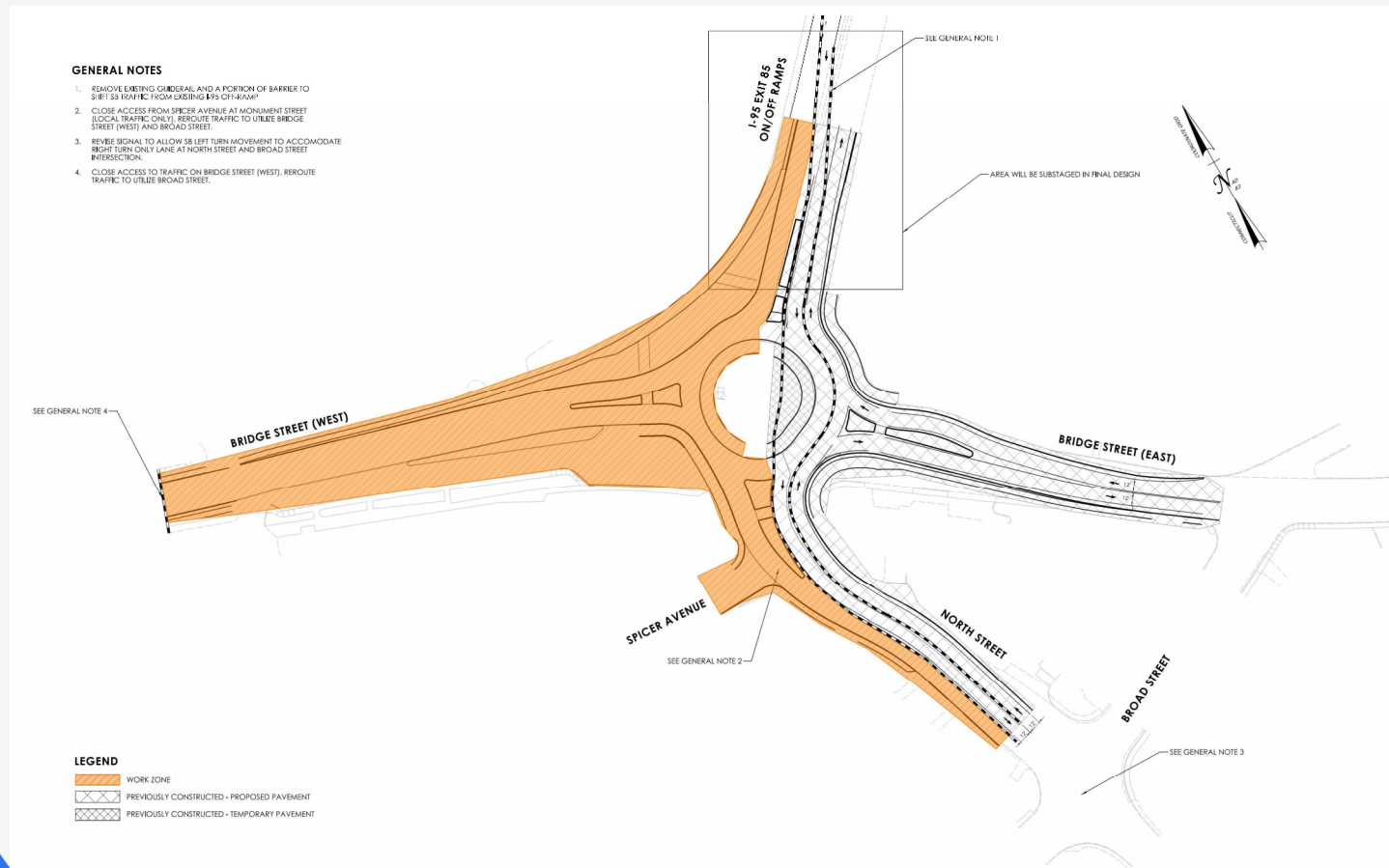
Gold Star Memorial Bridge Shared Use Path/Pedestrian Improvements // State Project No. 0094-0267



Staging – Intersection – Stage 2b

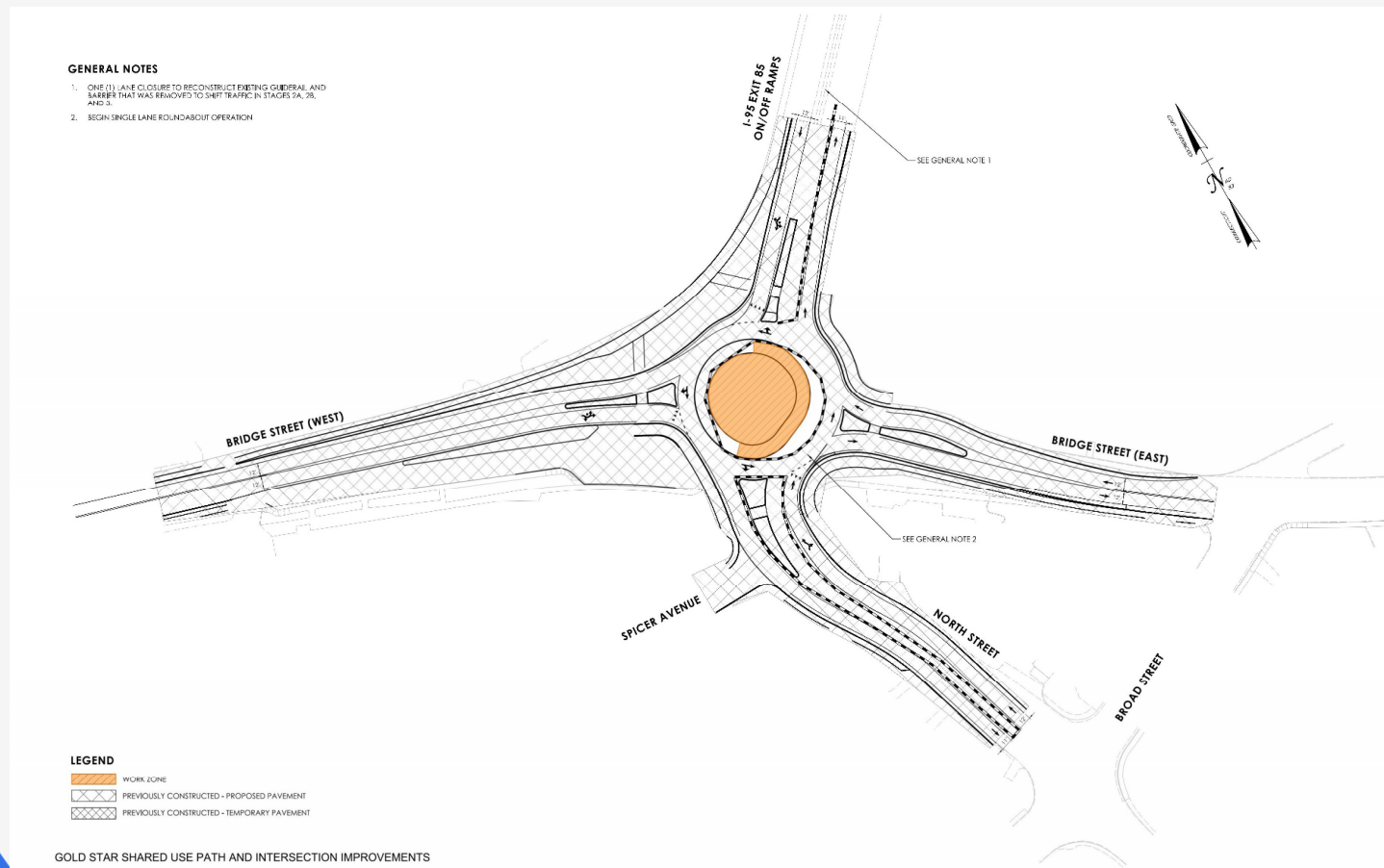


Staging – Intersection – Stage 3



Gold Star Memorial Bridge Shared Use Path/Pedestrian Improvements // State Project No. 0094-0267

Staging – Intersection – Stage 4



Rights-of-Way

- Rights-of-Way impacts were assessed using GIS data.
- Minimal property impacts are anticipated:
 - Potential construction easement – retaining wall on North Street
- Impacts to be re-evaluated when survey is complete.



Division of Rights of Way

- Function: Acquire all property/property rights necessary for the project.
- Relevant Law
 - State of Connecticut
 - C.G.S. Section 13a-73 & 13b-36
 - Federal
 - Uniform Relocation Assistance and Real Properties Acquisition Policies Act of 1970, as amended.



ROW – Acquisition Process

Letter of Intent to Acquire

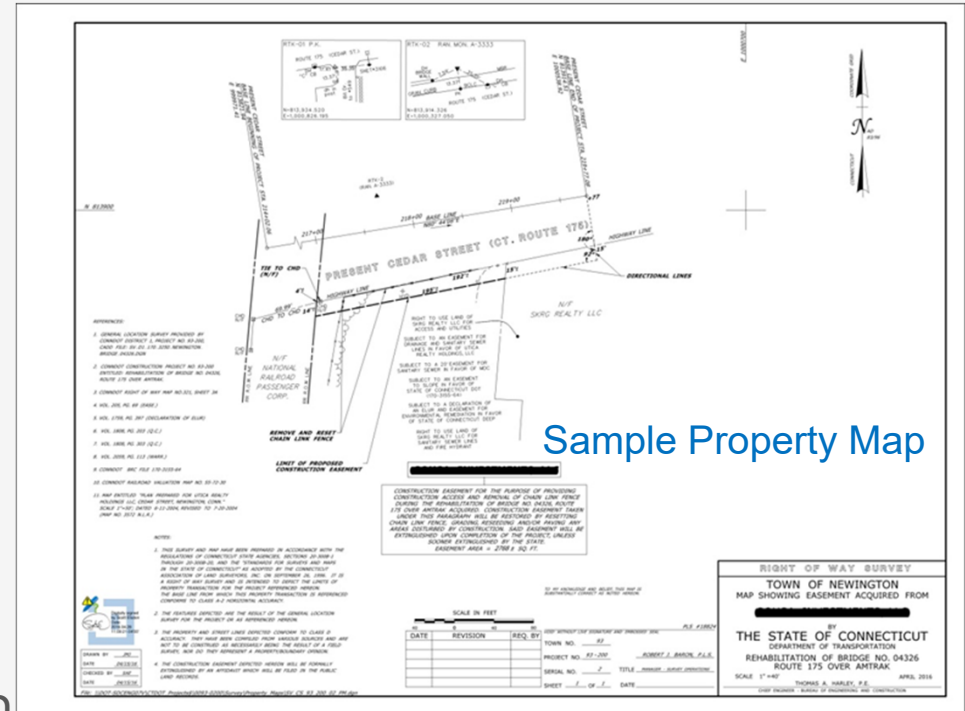
Valuation

Offer of Just Compensation

Negotiation

Acquisition

- Agreement
- Eminent Domain/Condemnation
 - 6 month appeal period



Environmental Permitting

Anticipated permits:

- Flood Management Certification
- Stormwater Discharge Permit
- Coastal Permits:
 - Coastal Consistency Review
 - Certification of Permission
- Inland Wetland and Wetland and Watercourse Permits:
 - General Water Resource Construction Activities (Form O)
- ACOE 404, 408, and Section 10 Permits
- United States Coast Guard Construction Letter



Opinion of Probable Construction Cost and Schedule



- Shared Use Path (SUP):
 - Approaches to Gold Star Bridge: ~\$5,266,000
 - Over Gold Star Bridge: ~\$46,700,000
- Intersection Improvements ~\$3,528,000
- **Total rounded cost of \$55.5 Million**
- Construction start: Summer of 2028, following NB Gold Star Bridge Deck Replacement (Project 94-235)
- Construction end: Fall 2029



Questions & Answers



State Project No. 0094-0267

For More Information:

<https://portal.ct.gov/dot/bridges/project-pages/gold-star-memorial-bridge>



Gold Star Memorial Bridge Shared Use Path/Pedestrian Improvements // State Project No. 0094-0267