



SAFE DRIVING AROUND CROSSWALKS

In 2024, there were 68 pedestrian fatalities in CT. Drivers can help reduce these numbers by staying alert, slowing down and sharing the road around crosswalks

Know Your Crosswalk

Crosswalks come in various designs but they all are to provide people a designated safe place to cross.

Stripes or Ladder

Standard

Brick

Zebra

Curb Extension

Curb extensions, also called curb bump outs, are an extension of the sidewalk zone or curb line into the roadway zone. They improve pedestrian safety and visibility by shortening the crossing distances, reducing vehicle speed, and positioning a person wanting to cross a road more directly within the line of sight of a driver. A pedestrian hit by a car going 40 MPH has an 85% chance of being killed. At 20 MPH the risk is reduced to 5%.

Shark's Teeth

Shark's Teeth are triangles painted on pavement to highlight an upcoming crosswalk. Drivers are supposed to stop at the teeth to allow pedestrians safe passage.

Respect the Crosswalk



These smaller signs tell road users to slow down and be ready to stop. There might be people up ahead trying to cross the road safely. Remember, it's the law to yield to them!



If someone is looking to cross the street, stop completely in advance of the crosswalk markings. Give the person crossing a signal such as a hand wave to let them know they are seen - **safety is a two-way street!**

SafeRoutes

Connecticut Safe Routes to School



Connecticut Department of Transportation



What do the flashing lights mean?

The flashing lights warn drivers of a pedestrian crossing the road. Drivers must keep their eyes up for pedestrians and yield or stop for them. It's the law.



It's the Law!

In Connecticut, a driver must yield to pedestrians if the pedestrian is within any portion of the crosswalk or if that pedestrian indicates intent to cross by raising a hand or moving into the crosswalk entrance.



Drivers who fail to yield at a crosswalk when required are subject to a \$500 fine. When violations result in crashes and fatalities, there can be more substantial penalties and even criminal charges.

Tips for Drivers

Don't speed! Reduce speeds when approaching crosswalks, intersections, and any area where pedestrians may be expected.

Look for and expect pedestrians. Look for and expect pedestrians at crosswalks and intersections – don't wait for them to make themselves known.

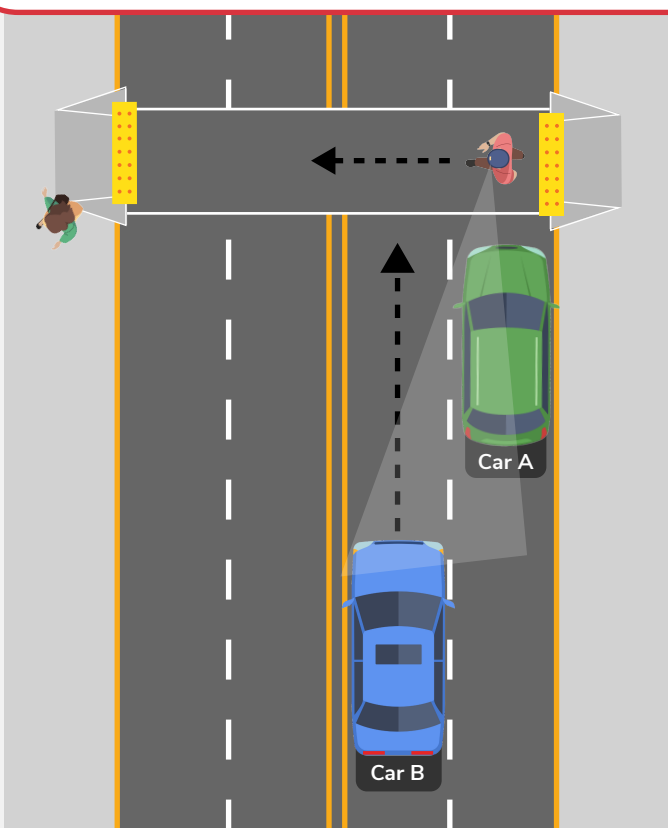
Be patient. Give pedestrians time to cross – give older pedestrians even more time.

Stopping at Crosswalks



Stopping too close to a crosswalk can put the pedestrian in danger of getting hit by another driver because it blocks the second vehicle driver's view of the pedestrian. Tip: Stop farther away from the crosswalk.

Problem: Car A stops to let pedestrian cross. Car A blocks the pedestrian's view of Car B and Car B's view of the pedestrian. Car B doesn't stop and may hit the pedestrian.



Solution: Car A stops farther away from the crosswalk. The pedestrian can now see Car B approaching and Car B can see the pedestrian crossing.

