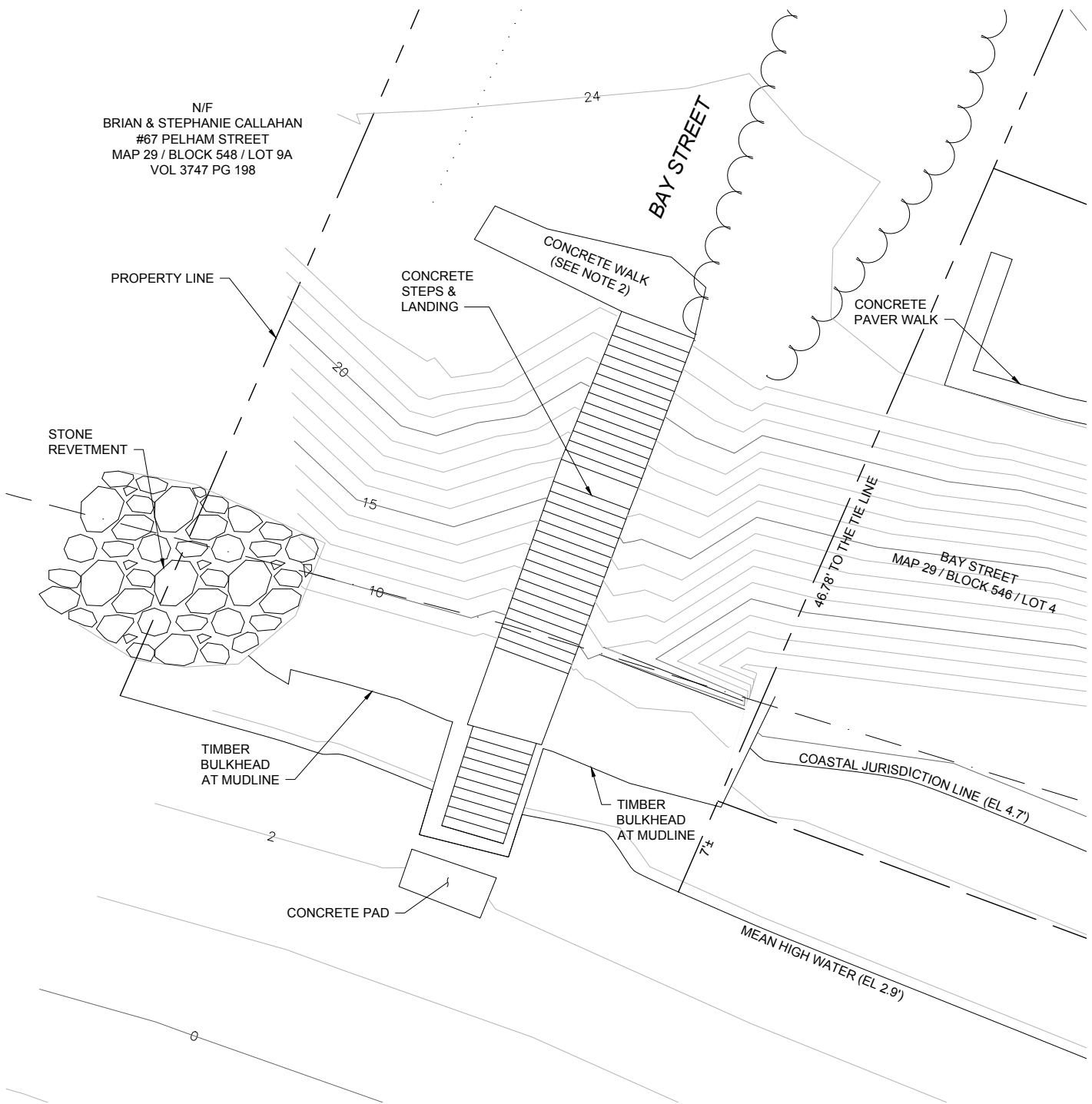
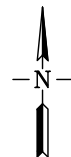
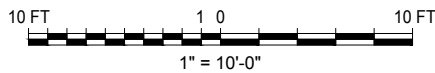


N/F
 BRIAN & STEPHANIE CALLAHAN
 #67 PELHAM STREET
 MAP 29 / BLOCK 548 / LOT 9A
 VOL 3747 PG 198



EXISTING PARTIAL SITE PLAN

SCALE: 1" = 10'-0"



NOTES:

1. THE ELEVATIONS SHOWN HEREON ARE BASED UPON NAVD 1988.
2. PORTIONS OF THE CONCRETE WALK ARE COVERED IN GRASS. APPROXIMATE LAYOUT AND DIMENSIONS OF THE CONCRETE WALK ARE SHOWN ON THIS PLAN. CONTRACTOR TO VERIFY DIMENSIONS IN THE FIELD.

PRELIMINARY
 NOT FOR
 CONSTRUCTION

SCALE: AS SHOWN	REV
DATE: 8-09-2018	
SKETCH / FIGURE No.	



1000 Lafayette Blvd., Suite 1010
 Bridgeport, CT 06604
 Tel.: 203.268.5007
 Fax: 203.268.8821

Website: www.cowi-na.com

STAIR AND ABUTMENT REPAIR

CITY OF MILFORD, PELHAM STREET

1

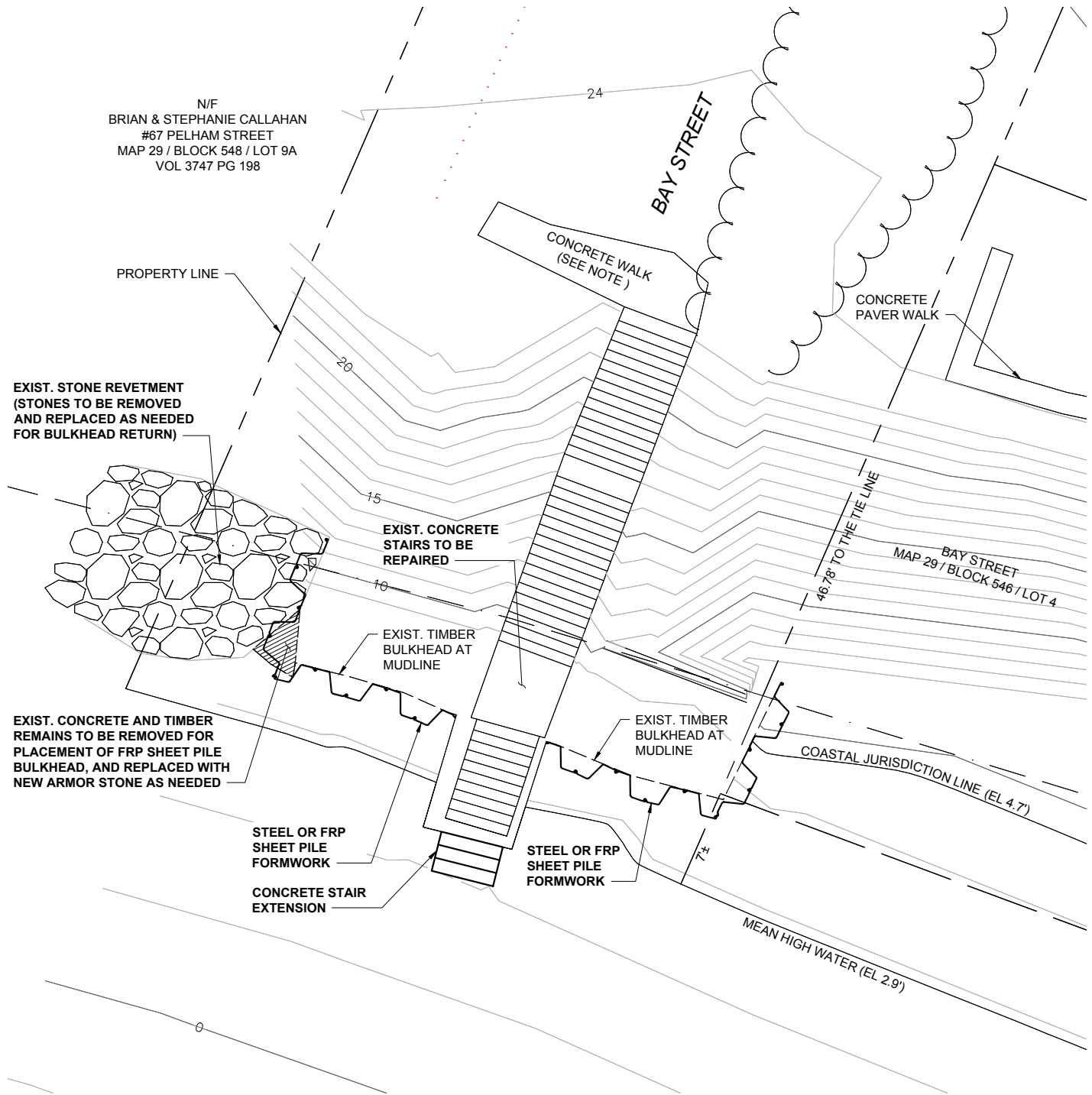
DESIGNED BY:
 EMCZ

DRAWN BY:

CHECKED BY:

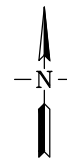
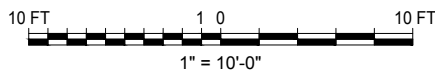
PLOTTED BY: QUEENE BENDICTO PLOT DATE: 8/12/2018 2:08:48 PM FILE LOCATION: C:\A1000001\02580\CAD\PERMIT\TASK_400\PERMIT 01.DWG

N/F
 BRIAN & STEPHANIE CALLAHAN
 #67 PELHAM STREET
 MAP 29 / BLOCK 548 / LOT 9A
 VOL 3747 PG 198



PROPOSED PARTIAL SITE PLAN

SCALE: 1" = 10'-0"



NOTE:

PORTIONS OF THE CONCRETE WALK ARE COVERED IN GRASS. APPROXIMATE LAYOUT AND DIMENSIONS OF THE CONCRETE WALK ARE SHOWN ON THIS PLAN. CONTRACTOR TO VERIFY DIMENSIONS IN THE FIELD.



1000 Lafayette Blvd., Suite 1010
 Bridgeport, CT 06604
 Tel.: 203.268.5007
 Fax: 203.268.8821

Website: www.cowi-na.com

STAIR AND ABUTMENT REPAIR

CITY OF MILFORD, PELHAM STREET

PRELIMINARY
 NOT FOR
 CONSTRUCTION

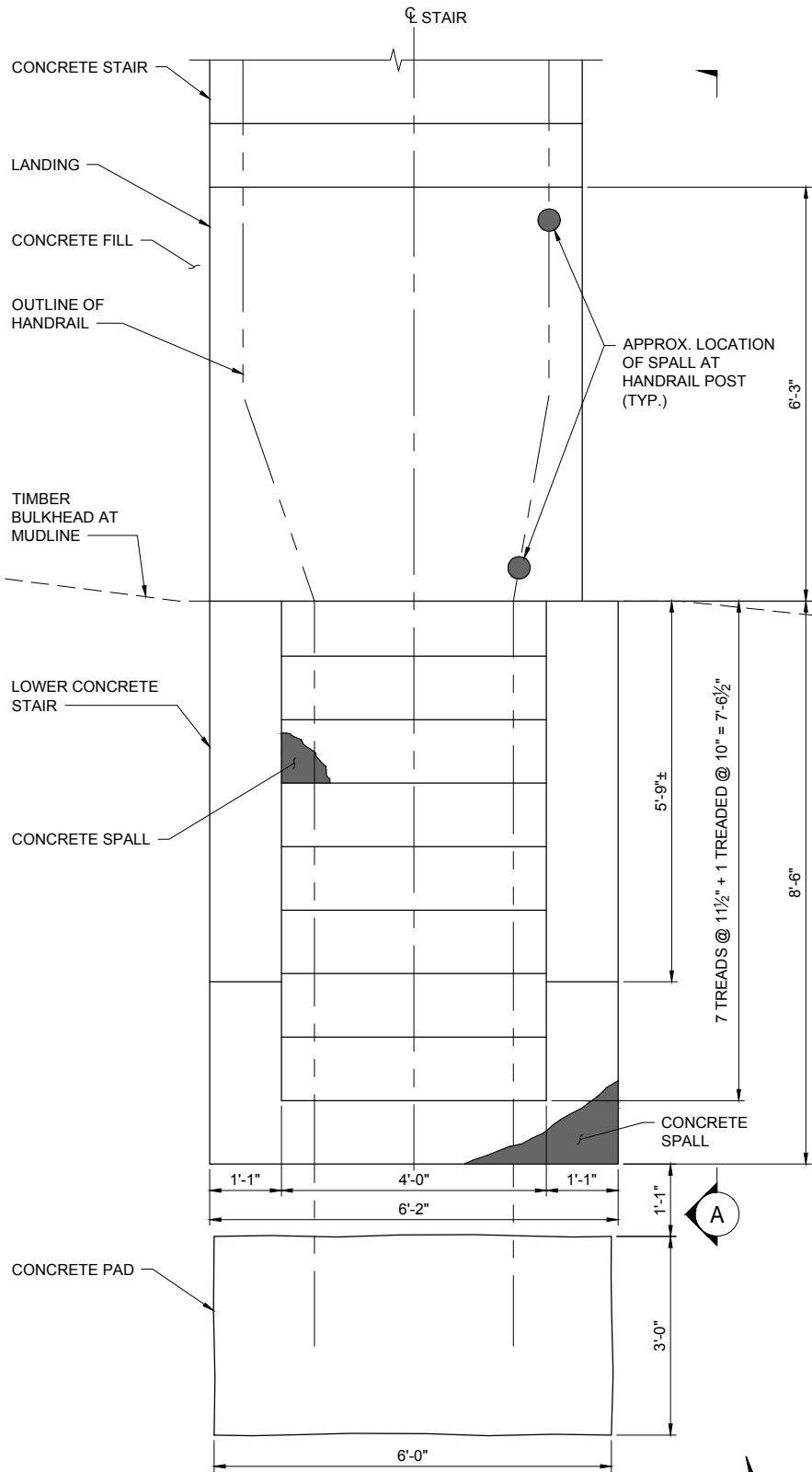
SCALE: AS SHOWN	REV
DATE: 8-09-2018	
SKETCH / FIGURE No.	

2

DESIGNED BY: EMCZ	DRAWN BY:	CHECKED BY:
----------------------	-----------	-------------

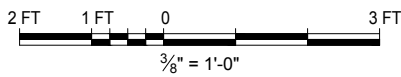
PLOTTED BY: QUEENE BENEDETTO PLOT DATE: 8/12/2018 3:15:44 PM FILE LOCATION: C:\A1000001\02580\CAD\PERMIT\ASK_400\FERMIT 02.DWG

PLOTTED BY: QUEENE BENEDETTO PLOT DATE: 8/12/2018 1:44 PM



EXISTING PARTIAL STAIR PLAN

SCALE: 3/8" = 1'-0"



COWI 1000 Lafayette Blvd., Suite 1010
 Bridgeport, CT 06604
 Tel.: 203.268.5007
 Fax: 203.268.8821
 Website: www.cowi-na.com

DESIGNED BY: EMCZ DRAWN BY: CHECKED BY:

STAIR AND ABUTMENT REPAIR

CITY OF MILFORD, PELHAM STREET

PRELIMINARY NOT FOR CONSTRUCTION	
SCALE: AS SHOWN	REV
DATE: 8-09-2018	
SKETCH / FIGURE No.	
3	

FILE LOCATION: C:\A1000001\02580\CAD\PERMIT\TASK_401\PERMIT_03.DWG

DESIGNED BY: ALMO

DRAWN BY:

CHECKED BY:

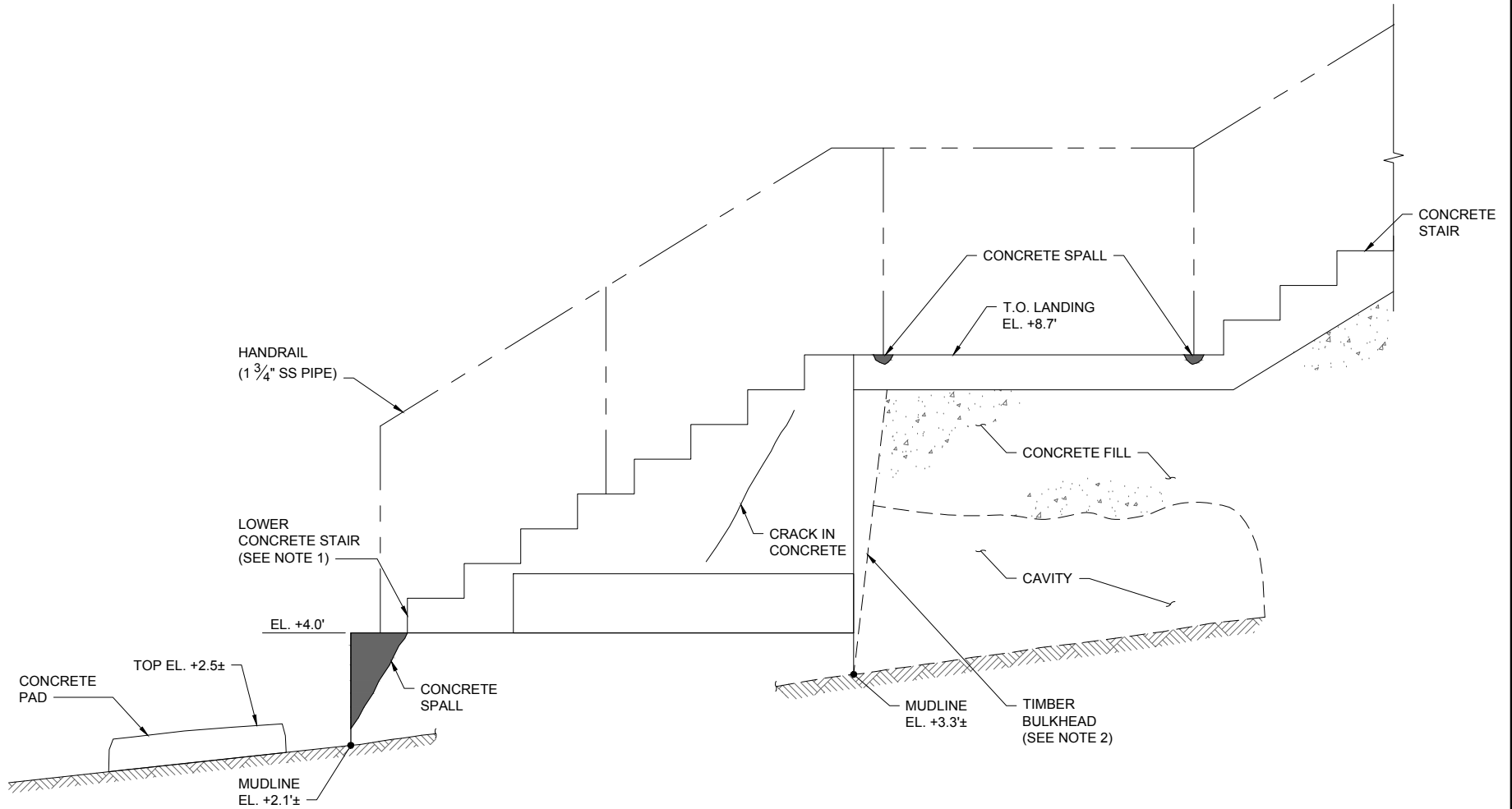
COWI

Website: www.cowi-na.com

1000 Lafayette Blvd., Suite 1010
Bridgeport, CT 06604
Tel.: 203.268.5007
Fax: 203.268.8821

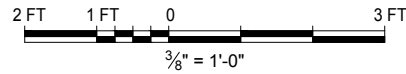
CITY OF MILFORD, PELHAM STREET

STAIR AND ABUTMENT REPAIR



EXISTING SECTION A THROUGH CONCRETE STAIR

SCALE: 3/8" = 1'-0"

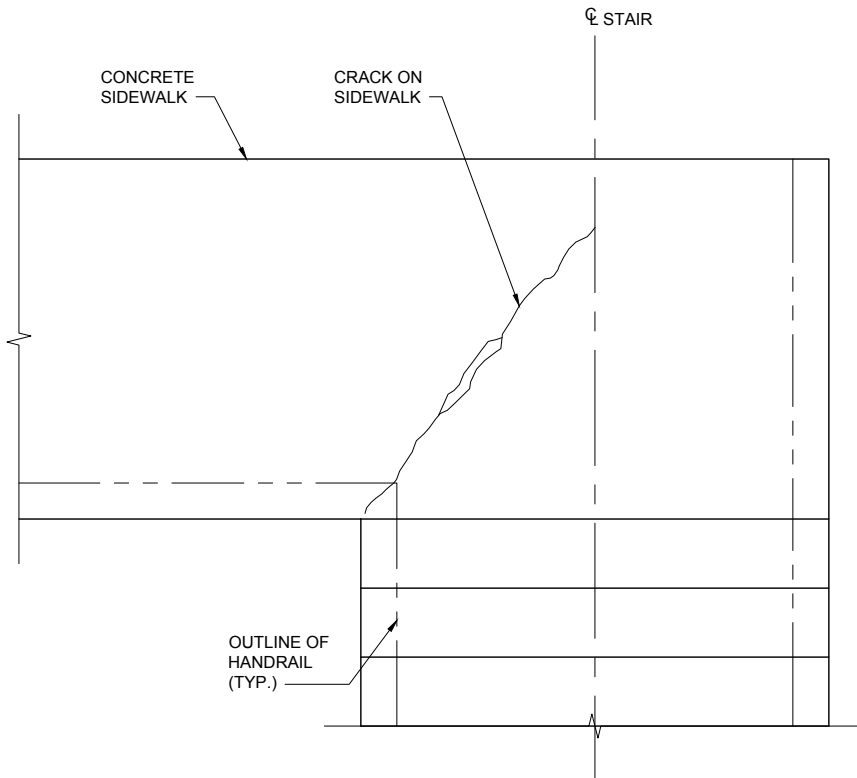


NOTES:

1. THE LOWER CONCRETE STAIR IS PRESUMED TO BE HOLLOW.
2. THE TIMBER BULKHEAD IS NOT PLUMB. APPROXIMATE BATTER OF TIMBER SHEETING IS SHOWN.

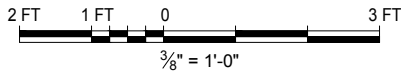
PRELIMINARY
NOT FOR
CONSTRUCTION

SCALE:	AS SHOWN
DATE:	8-09-2018
SKETCH/FIGURE NO.	4



EXISTING PARTIAL PLAN OF STAIR AT TOP LANDING

SCALE: 3/8" = 1'-0"



PRELIMINARY
NOT FOR
CONSTRUCTION

SCALE:
AS SHOWN

DATE:
8-09-2018

SKETCH / FIGURE No.

5



1000 Lafayette Blvd., Suite 1010
Bridgeport, CT 06604
Tel.: 203.268.5007
Fax: 203.268.8821

Website: www.cowi-na.com

STAIR AND ABUTMENT REPAIR

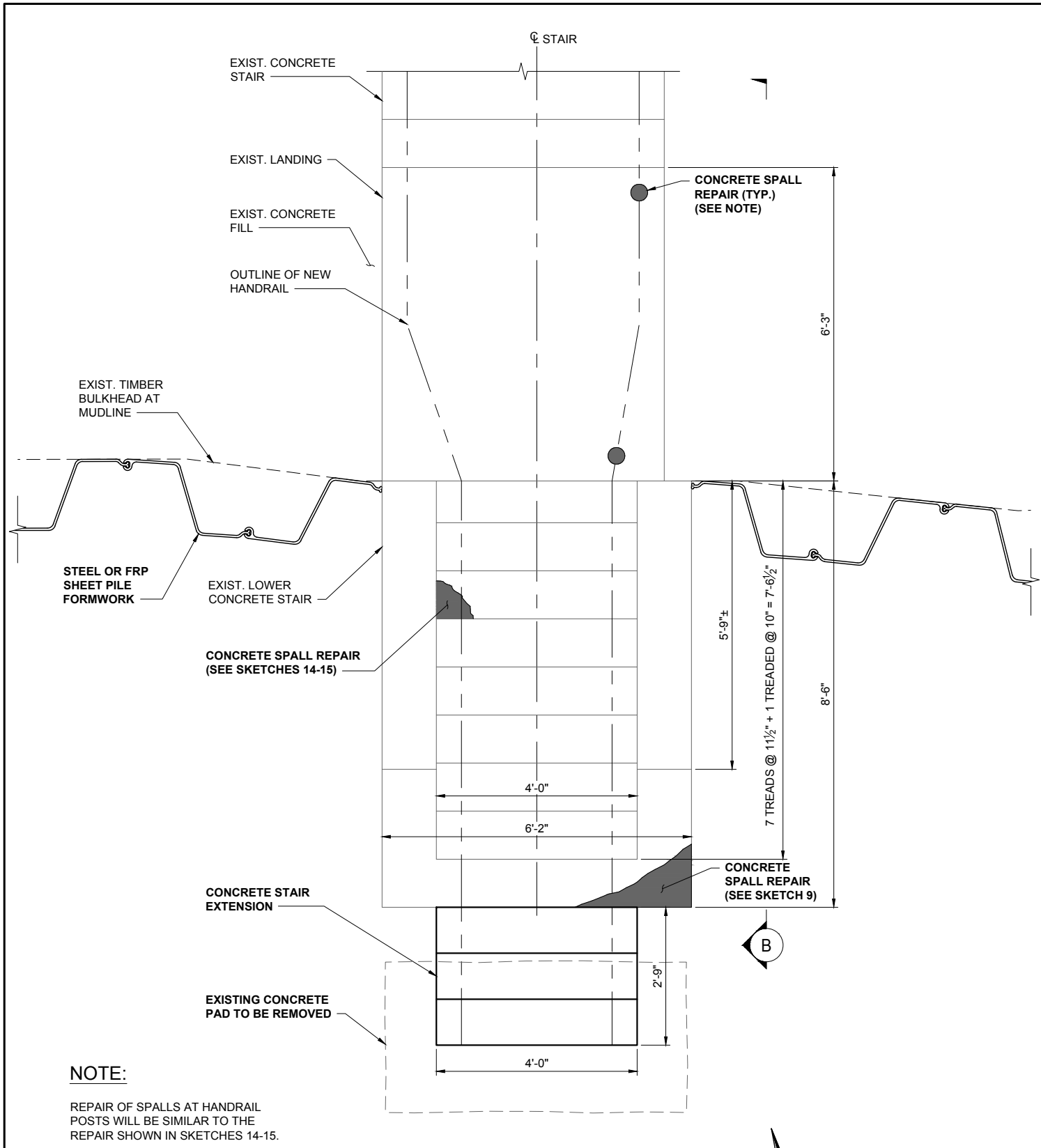
CITY OF MILFORD, PELHAM STREET

DESIGNED BY:
EMCZ

DRAWN BY:

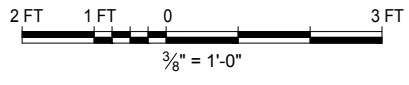
CHECKED BY:

PLOTTED BY: QUEENE BENEDETTO PLOT DATE: 8/12/2018 12:08:15 PM



NOTE:
REPAIR OF SPALLS AT HANDRAIL POSTS WILL BE SIMILAR TO THE REPAIR SHOWN IN SKETCHES 14-15.

PARTIAL STAIR REPAIR PLAN
SCALE: 3/8" = 1'-0"



COWI 1000 Lafayette Blvd., Suite 1010
Bridgeport, CT 06604
Tel.: 203.268.5007
Fax: 203.268.8821
Website: www.cowi-na.com

DESIGNED BY: EMCZ DRAWN BY: CHECKED BY:

STAIR AND ABUTMENT REPAIR

CITY OF MILFORD, PELHAM STREET

PRELIMINARY NOT FOR CONSTRUCTION	
SCALE: AS SHOWN	REV
DATE: 8-09-2018	
SKETCH / FIGURE No.	
6	

FILE LOCATION: C:\A1000001\102580\CAD\PERMIT\TASK_401\PERMIT_06.DWG

DESIGNED BY: ALMO

DRAWN BY:

CHECKED BY:

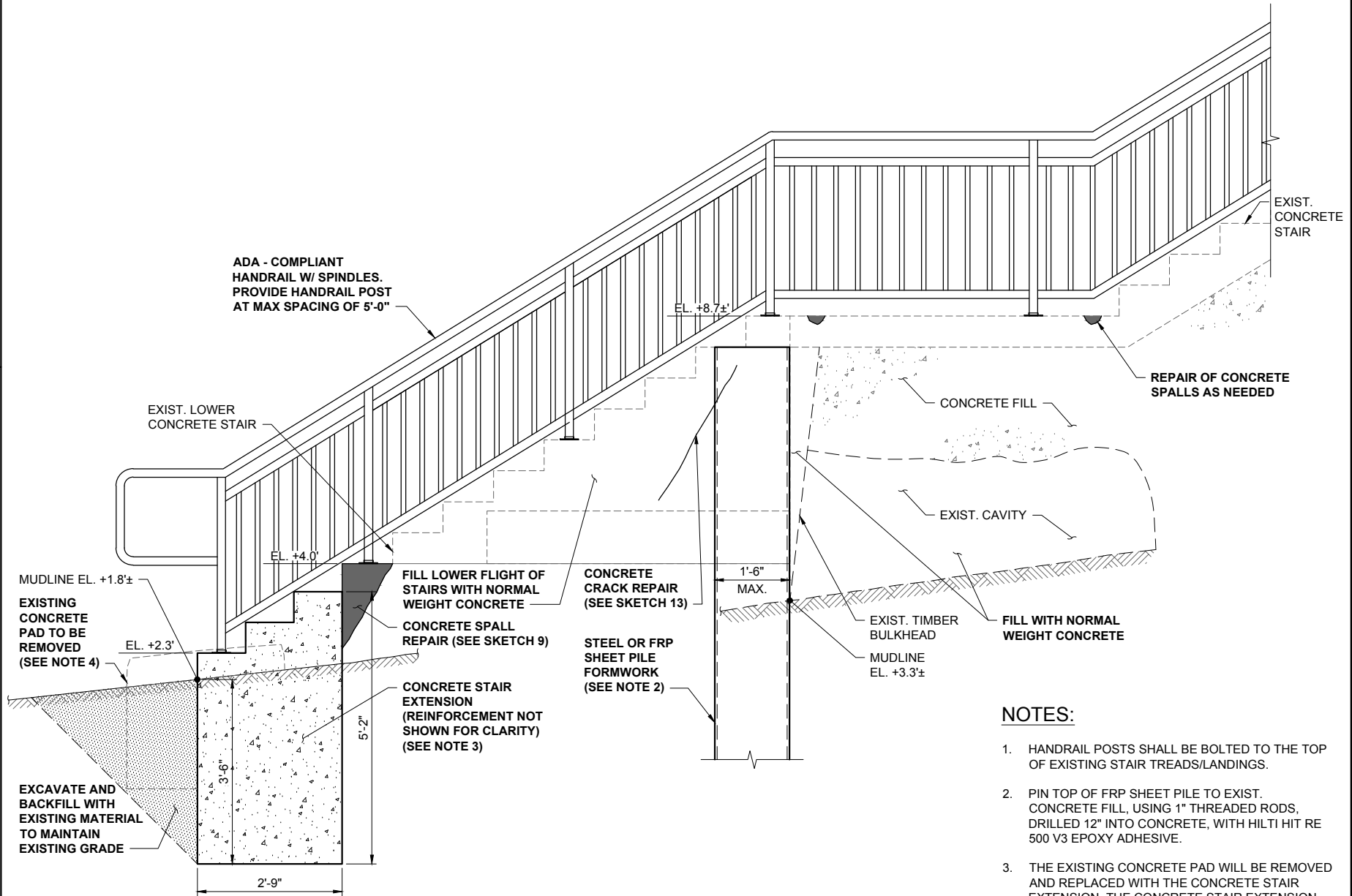
COWI

Website: www.cowi-na.com

1000 Lafayette Blvd., Suite 1010
Bridgeport, CT 06604
Tel.: 203.268.5007
Fax: 203.268.8821

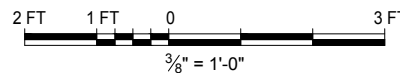
CITY OF MILFORD, PELHAM STREET

STAIR AND ABUTMENT REPAIR



PARTIAL STAIR REPAIR SECTION B

SCALE: 3/8" = 1'-0"



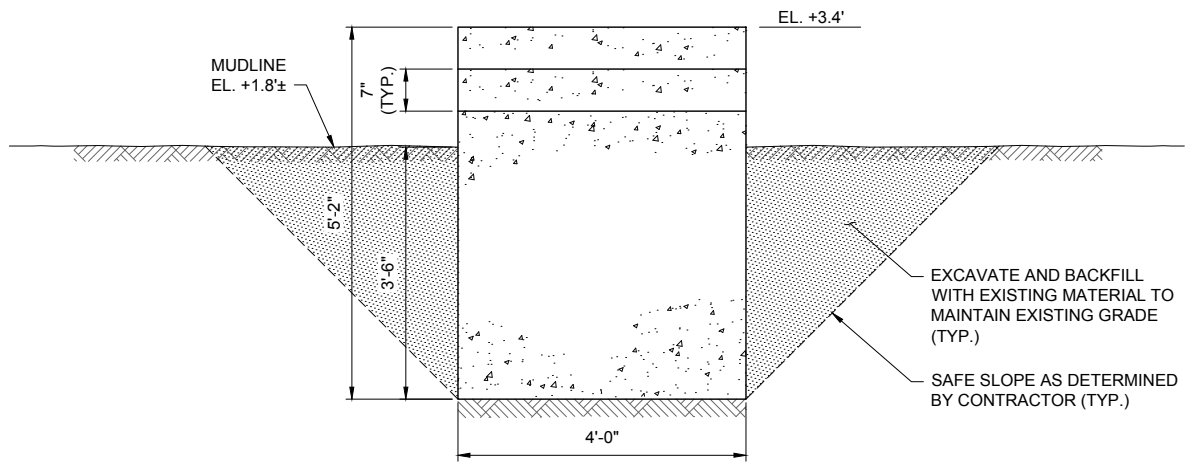
NOTES:

- HANDRAIL POSTS SHALL BE BOLTED TO THE TOP OF EXISTING STAIR TREADS/LANDINGS.
- PIN TOP OF FRP SHEET PILE TO EXIST. CONCRETE FILL, USING 1" THREADED RODS, DRILLED 12" INTO CONCRETE, WITH HILTI HIT RE 500 V3 EPOXY ADHESIVE.
- THE EXISTING CONCRETE PAD WILL BE REMOVED AND REPLACED WITH THE CONCRETE STAIR EXTENSION. THE CONCRETE STAIR EXTENSION WILL BE DOWELED INTO THE EXISTING CONCRETE STAIRS. DOWELS WILL BE SECURED WITH HILTI HIT RE 500 V3 EPOXY ADHESIVE.
- THE DEPTH OF THE EXISTING CONCRETE PAD IS UNKNOWN. PRESUMED CONSTRUCTION IS SHOWN.

PRELIMINARY
NOT FOR
CONSTRUCTION

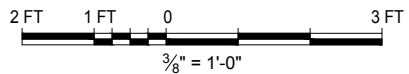
SCALE:	AS SHOWN
DATE:	8-09-2018
REV	

7



CONCRETE STAIR EXTENSION ELEVATION

SCALE: 3/8" = 1'-0"



PRELIMINARY
NOT FOR
CONSTRUCTION

SCALE: AS SHOWN	REV
DATE: 8-09-2018	

SKETCH / FIGURE No.

8



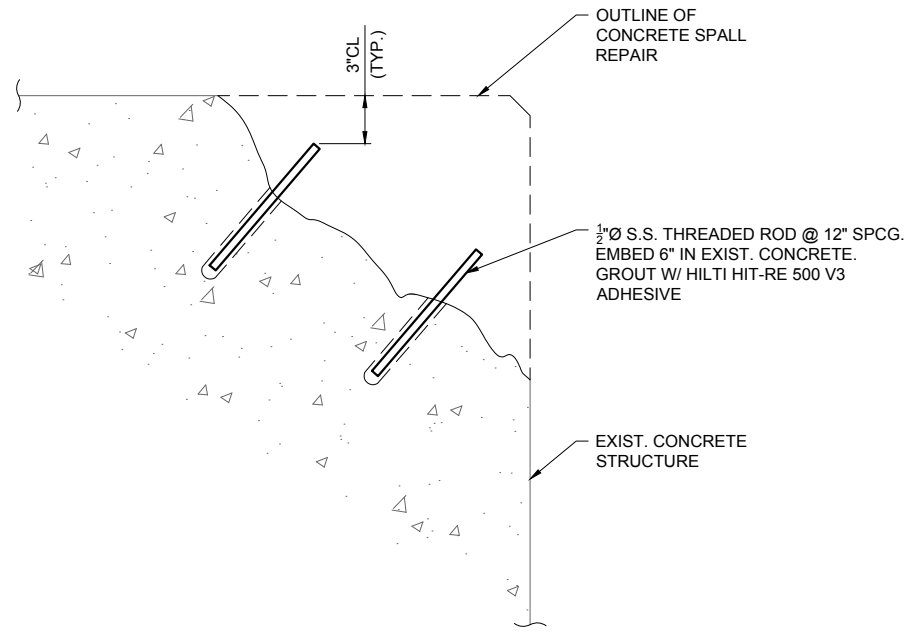
1000 Lafayette Blvd., Suite 1010
Bridgeport, CT 06604
Tel.: 203.268.5007
Fax: 203.268.8821

Website: www.cowi-na.com

STAIR AND ABUTMENT REPAIR

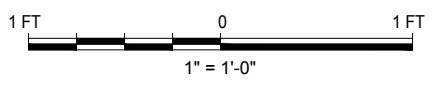
CITY OF MILFORD, PELHAM STREET

DESIGNED BY: EMCZ	DRAWN BY:	CHECKED BY:
----------------------	-----------	-------------



CONCRETE SPALL REPAIR DETAIL

SCALE: 1" = 1'-0"



NOTES:

1. PRESSURE WASH CONCRETE SURFACE.
2. REMOVE ANY LOOSE CONCRETE OR LAITANCE.
3. COAT CONCRETE SURFACE W/ BONDING AGENT.
4. INSTALL PINS AS SHOWN ON DETAIL ABOVE.
5. FORM AND PLACE NORMAL WEIGHT CONCRETE.

PRELIMINARY
NOT FOR
CONSTRUCTION

SCALE: AS SHOWN	REV
DATE: 8-09-2018	

SKETCH / FIGURE No.

9

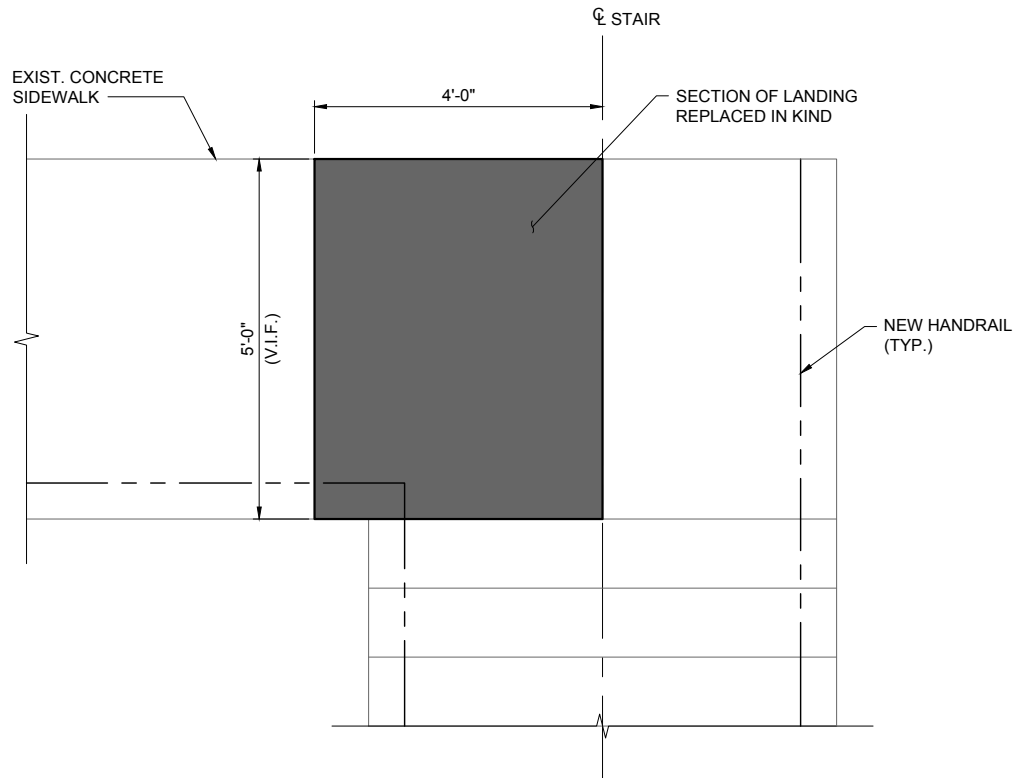


1000 Lafayette Blvd., Suite 1010
Bridgeport, CT 06604
Tel.: 203.268.5007
Fax: 203.268.8821
Website: www.cowi-na.com

STAIR AND ABUTMENT REPAIR

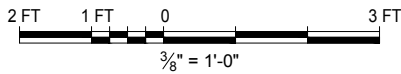
CITY OF MILFORD, PELHAM STREET

DESIGNED BY: EMCZ	DRAWN BY:	CHECKED BY:
----------------------	-----------	-------------



REPAIR PLAN AT TOP LANDING

SCALE: 3/8" = 1'-0"



NOTES:

1. SAWCUT EDGES OF REPAIRS, FULL DEPTH.
2. IMPROVE SUB-BASE BY FILLING AND COMPACTING SOIL.
3. INSTALL #4 DOWELS TO CONNECT REPAIR PAD TO STAIR.
4. PROVIDE COMPRESSIBLE FILLER AT NEW JOINTS.
5. FINISH CONCRETE SURFACE TO MATCH EXISTING.

COWI 1000 Lafayette Blvd., Suite 1010
 Bridgeport, CT 06604
 Tel.: 203.268.5007
 Fax: 203.268.8821
 Website: www.cowi-na.com

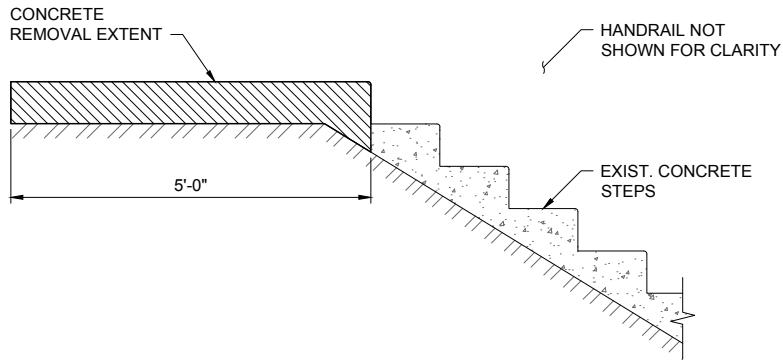
DESIGNED BY: EMCZ DRAWN BY: CHECKED BY:

STAIR AND ABUTMENT REPAIR

CITY OF MILFORD, PELHAM STREET

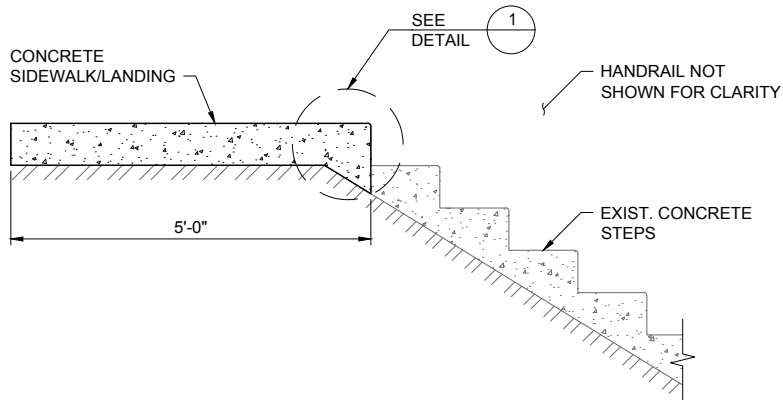
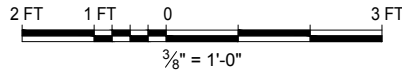
PRELIMINARY NOT FOR CONSTRUCTION	
SCALE: AS SHOWN	REV
DATE: 8-09-2018	
SKETCH / FIGURE No.	
10	

FILE LOCATION: C:\A100000\A102500\CAD\PERMIT\TASK_400\PERMIT 011.DWG PLOTTED BY: QUEENE BENEDETTO PLOT DATE: 9/12/2018 2:08:52 PM



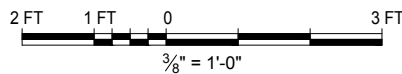
DEMOLITION SECTION AT TOP LANDING

SCALE: 3/8" = 1'-0"



REPAIR SECTION AT TOP LANDING

SCALE: 3/8" = 1'-0"



NOTE:

REINFORCING STEEL NOT SHOWN FOR CLARITY.

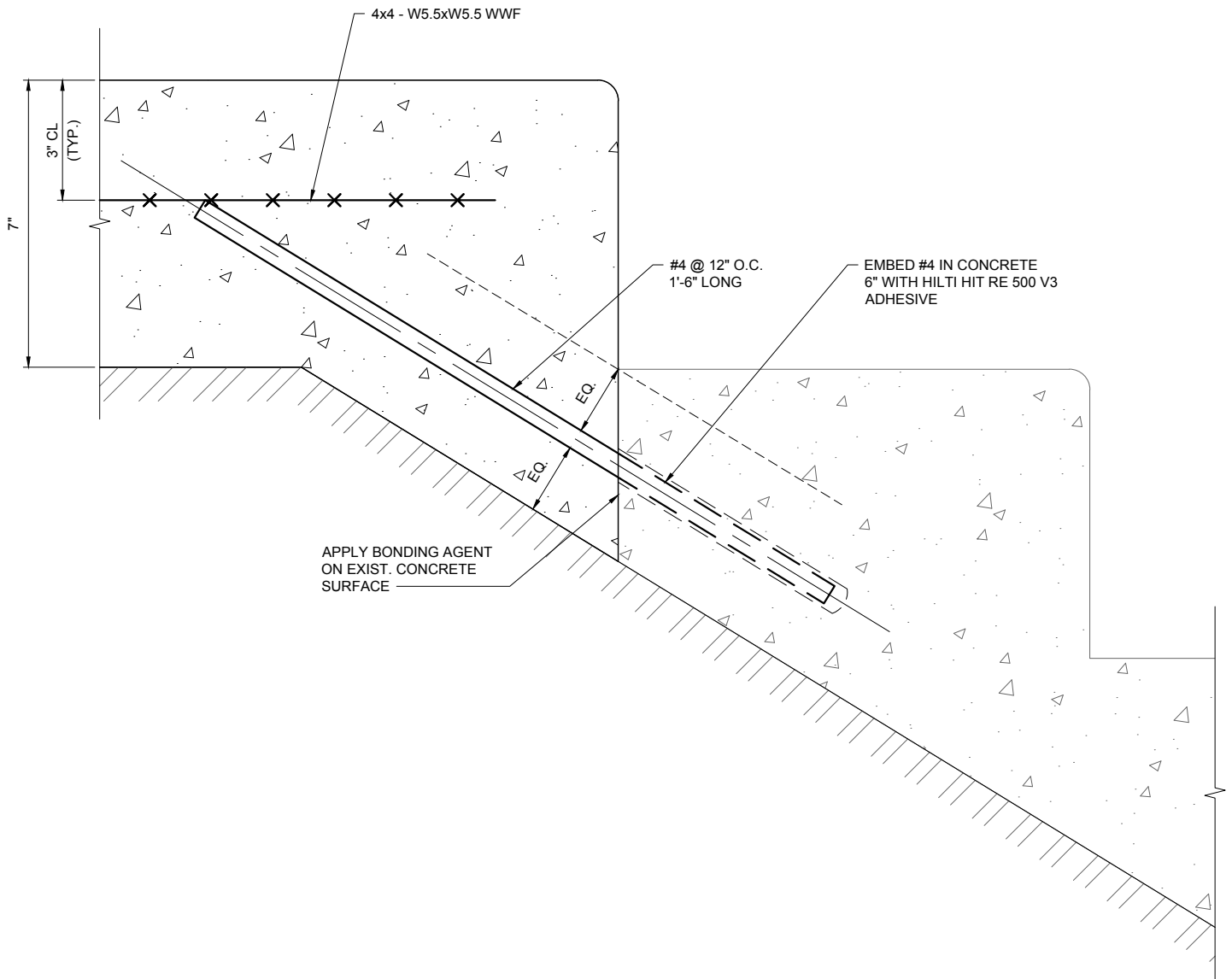
COWI 1000 Lafayette Blvd., Suite 1010
 Bridgeport, CT 06604
 Tel.: 203.268.5007
 Fax: 203.268.8821
 Website: www.cowi-na.com

DESIGNED BY: EMCZ DRAWN BY: CHECKED BY:

STAIR AND ABUTMENT REPAIR

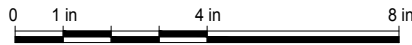
CITY OF MILFORD, PELHAM STREET

PRELIMINARY NOT FOR CONSTRUCTION	
SCALE: AS SHOWN	REV
DATE: 8-09-2018	
SKETCH / FIGURE No.	
11	



REPAIR DETAIL 1 AT TOP LANDING

SCALE: 3" = 1'-0"



3" = 1'-0"

PRELIMINARY NOT FOR CONSTRUCTION	
SCALE: AS SHOWN	REV
DATE: 8-09-2018	
SKETCH / FIGURE No.	
12	



1000 Lafayette Blvd., Suite 1010
Bridgeport, CT 06604
Tel.: 203.268.5007
Fax: 203.268.8821

Website: www.cowi-na.com

STAIR AND ABUTMENT REPAIR

CITY OF MILFORD, PELHAM STREET

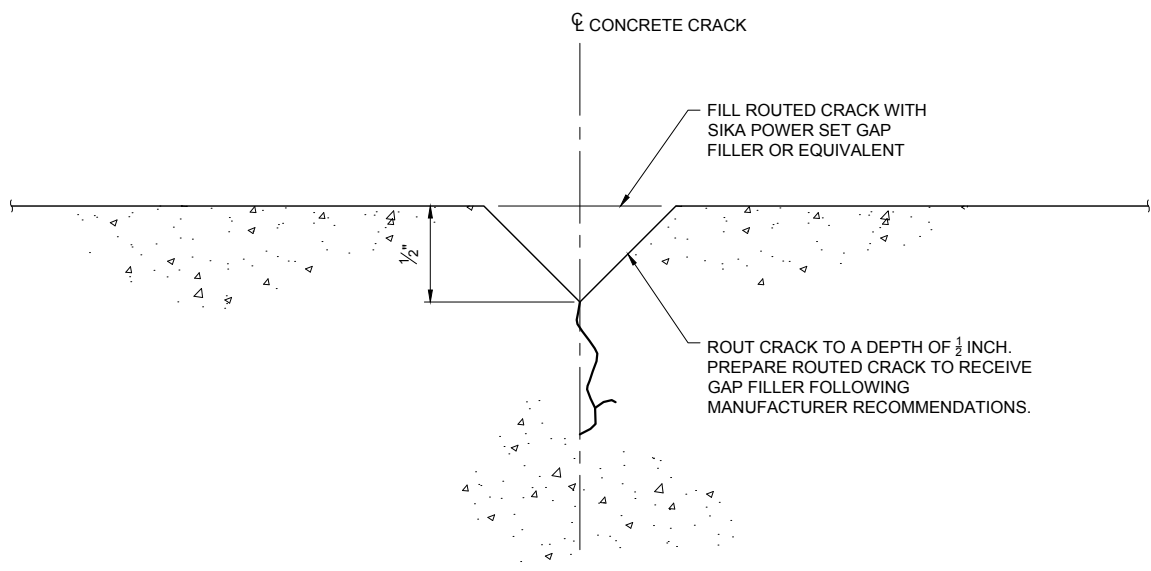
DESIGNED BY:

EMCZ

DRAWN BY:

CHECKED BY:

PLOTTED BY: QUEENE BENEDETTO PLOT DATE: 9/12/2018 2:09:55 PM FILE LOCATION: C:\A1000001\02580\CAD\PERMIT\TASK_400\FERMIT 012.DWG



FILL ROUTED CRACK WITH SIKA POWER SET GAP FILLER OR EQUIVALENT

ROUT CRACK TO A DEPTH OF 1/2 INCH. PREPARE ROUTED CRACK TO RECEIVE GAP FILLER FOLLOWING MANUFACTURER RECOMMENDATIONS.

CRACK REPAIR DETAIL
 SCALE: 3" = 1'-0"
 0 1 in 4 in 8 in
 3" = 1'-0"

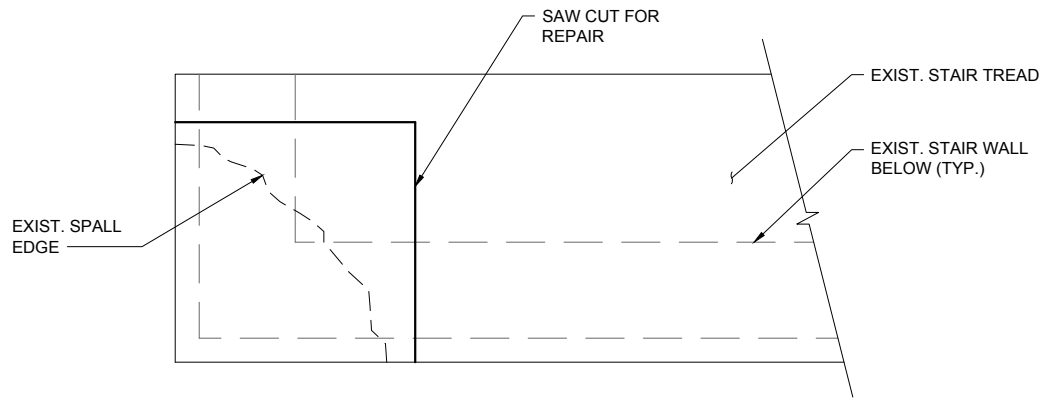
PRELIMINARY NOT FOR CONSTRUCTION	
SCALE: AS SHOWN	REV
DATE: 8-09-2018	
SKETCH / FIGURE No.	
13	

COWI 1000 Lafayette Blvd., Suite 1010
 Bridgeport, CT 06604
 Tel.: 203.268.5007
 Fax: 203.268.8821
 Website: www.cowi-na.com

DESIGNED BY: EMCZ DRAWN BY: CHECKED BY:

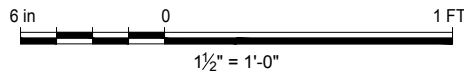
STAIR AND ABUTMENT REPAIR

CITY OF MILFORD, PELHAM STREET



PARTIAL TREAD REPAIR PLAN

SCALE: 1 1/2" = 1'-0"



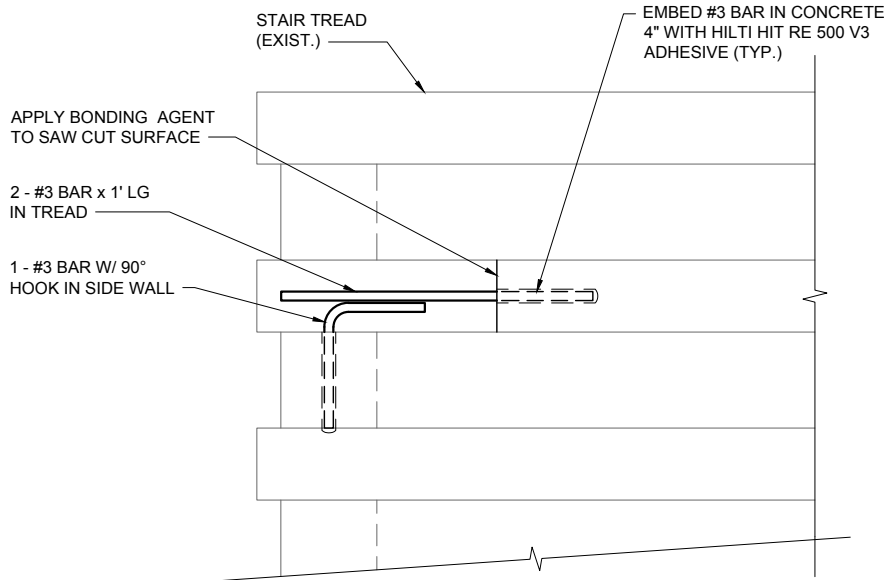
NOTE:

SEE SKETCH 6 (PARTIAL STAIR REPAIR PLAN)
FOR LOCATION OF THIS REPAIR.

COWI	1000 Lafayette Blvd., Suite 1010 Bridgeport, CT 06604 Tel.: 203.268.5007 Fax: 203.268.8821 Website: www.cowi-na.com
DESIGNED BY:	DRAWN BY:
EMCZ	CHECKED BY:

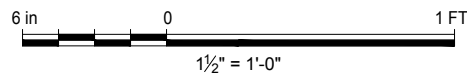
STAIR AND ABUTMENT REPAIR
CITY OF MILFORD, PELHAM STREET

PRELIMINARY NOT FOR CONSTRUCTION	
SCALE: AS SHOWN	REV
DATE: 8-09-2018	
SKETCH / FIGURE No.	
14	



STAIR TREAD REPAIR DETAIL

SCALE: 1 1/2" = 1'-0"



NOTES:

1. FORM TREAD TO MATCH EXIST.
2. PLACE NORMAL WEIGHT CONCRETE.

COWI

1000 Lafayette Blvd., Suite 1010
Bridgeport, CT 06604
Tel.: 203.268.5007
Fax: 203.268.8821

Website: www.cowi-na.com

STAIR AND ABUTMENT REPAIR

CITY OF MILFORD, PELHAM STREET

PRELIMINARY
NOT FOR
CONSTRUCTION

SCALE: AS SHOWN	REV
DATE: 8-09-2018	
SKETCH / FIGURE No.	

15

DESIGNED BY:
EMCZ

DRAWN BY:

CHECKED BY: