



Bryan P. Hurlburt
Commissioner

STATE OF CONNECTICUT DEPARTMENT OF AGRICULTURE

Bureau of Regulatory Services
450 Columbus Blvd, Suite 702 Hartford, CT 06103
Phone: 860-713-2502 Email : AGR.Hemp@ct.gov



Instructions for Creating Maps and Obtaining GPS Coordinates for Submission with the Application

(rev. 12.2.2021)

Applications, supporting documents and payments will only be accepted through the DOAG E-License portal. Paper applications will not be accepted.

The following instructions outline required lot map contents and basic instructions for obtaining a map. If you need more information after reading these instructions, contact us at (860) 713-2502 or AGR.Hemp@ct.gov.

You are required to provide to DoAg a photographic aerial map of all growing, handling, and storage locations. This requirement applies to all applicants and License Holders, and will assist with the DoAg's required reporting to law enforcement.

Each map should be **in color** and contain the following:

- Contain only one address per map and all locations for that address on a single map
- The applicant's full name printed on the page
- If applicable, the full name of the business entity
- The map location's street address, city, state and zip code printed on the page
- The map should show the lot location, a public roadway, and the road name.
- Field location. This includes:
 - Outline of each separate field to be used for planting
 - Lot ID/name for each separate field; and
 - Indicate the acreage for that field intended for planting
- Greenhouses, indoor growing structures, storage buildings, or handling facilities and the lot ID/name of each structure.
- GPS coordinates for each field or building. GPS coordinates should be provided in DECIMAL DEGREES (to four decimal places) with a pinpoint showing exactly where the GPS coordinate was taken. The Google Earth instructions on the DoAg's website (link at top of this page) gives specific instructions for obtaining the coordinates in the correct format. Other websites like, Map Quest, Google Maps etc. can also be used to obtain GPS Coordinates. There are also apps on some smart phones that can be used to obtain GPS coordinates.

The DoAg prefers maps created with Google Earth. You can download Google Earth Pro for free by visiting <https://www.google.com/earth/versions/#earth-pro> . Electronic USDA Farm Service Agency (FSA) maps or USDA Natural Resources Conservation Service maps with **legible** handwritten information will also be acceptable.

To obtain a map online:

- You can go to Google Maps online at <http://maps.google.com/> . When you have the address on your screen, you can click the button in the lower left corner that says “Earth” or “Satellite” for an aerial view of the location.
- On Map Quest at <http://www.mapquest.com/> , locate the address on your screen, then click in the upper right corner on “Satellite” for an aerial view of the location.

Print out the map when you are satisfied with the level of zoom (i.e. should show at least one nearby road, the entrance to the lot, and the location of the hemp locations), then finish by **legibly** handwriting the required information. The map must be named with the lot id and in pdf format for uploading.



Connecticut Department of Agriculture

Hemp Program GPS Coordinates and Mapping Requirements

Your map must show GPS Coordinates at the center of each outdoor lot where Hemp is grown or at the entrance to a building where Hemp is grown indoors.

Your map must show the acreage of each lot or square footage of indoor grow site.

Coordinates and acreage may be obtained using a tool such as Google Earth.

The following describes how to use Google Earth for GPS coordinates and acreage estimates.

Connecticut Department of Agriculture
Hemp Program



Using Google Earth for GPS Coordinates & Maps

Google Earth Pro Preferred

- GPS Coordinates- Google Earth Pro is the preferred method to obtain GPS coordinates for your hemp locations
- Maps- Generate maps for your applications and Site Modification Requests using Google Earth Pro





GPS Coordinates

Three common formats

		Preferred Method
DD°MM'SS.SS''	Degrees, Minutes, Seconds	No
DD.DDDD°	Decimal Degrees	Yes
DD°MM.MMM'	Degrees Decimal Minutes	No

Format on Licensing Agreement= Decimal Degrees to four decimal places

Google Earth Pro

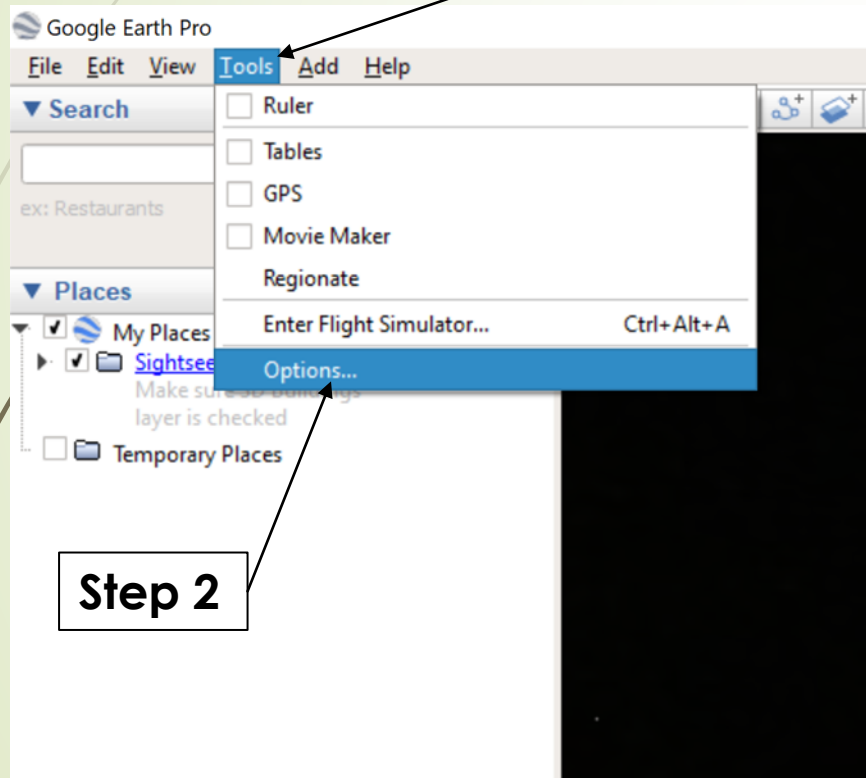


Enlarged area
on next slide

You can download Google Earth Pro for free by visiting <https://www.google.com/earth/versions/#earth-pro>.

Set-up the correct GPS coordinate format

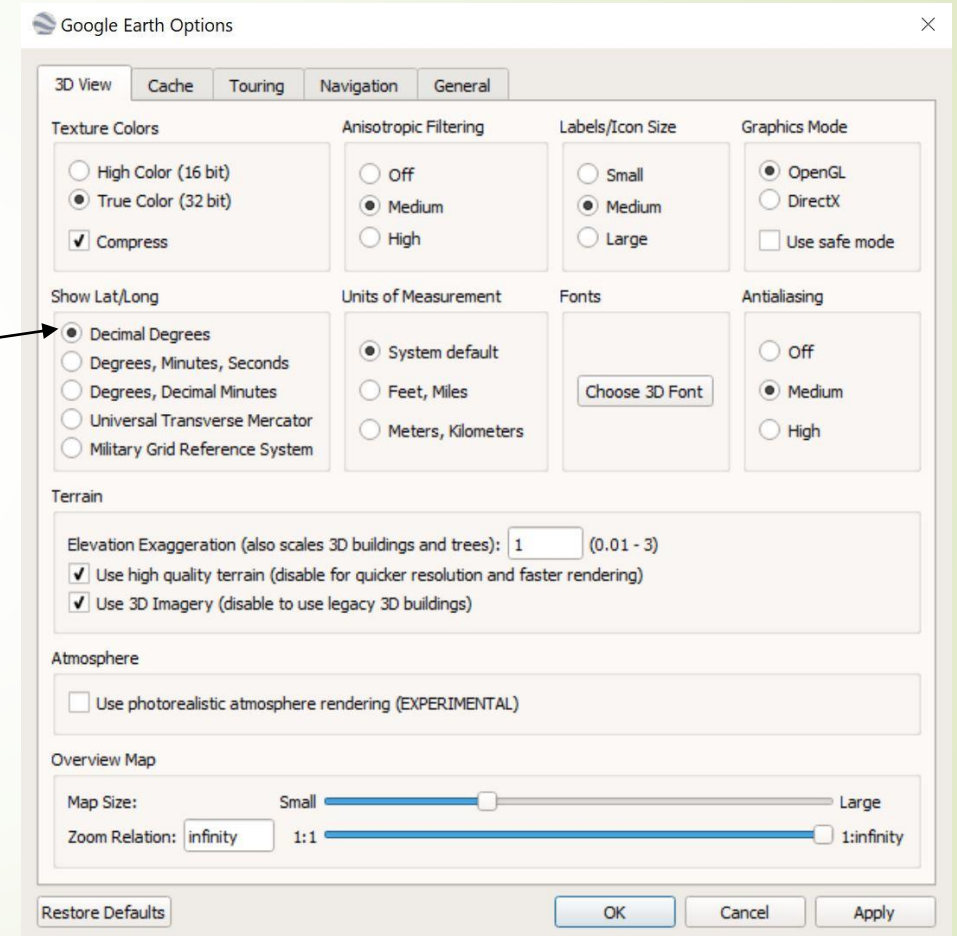
Four easy steps



Step 1

Step 2

Step 3



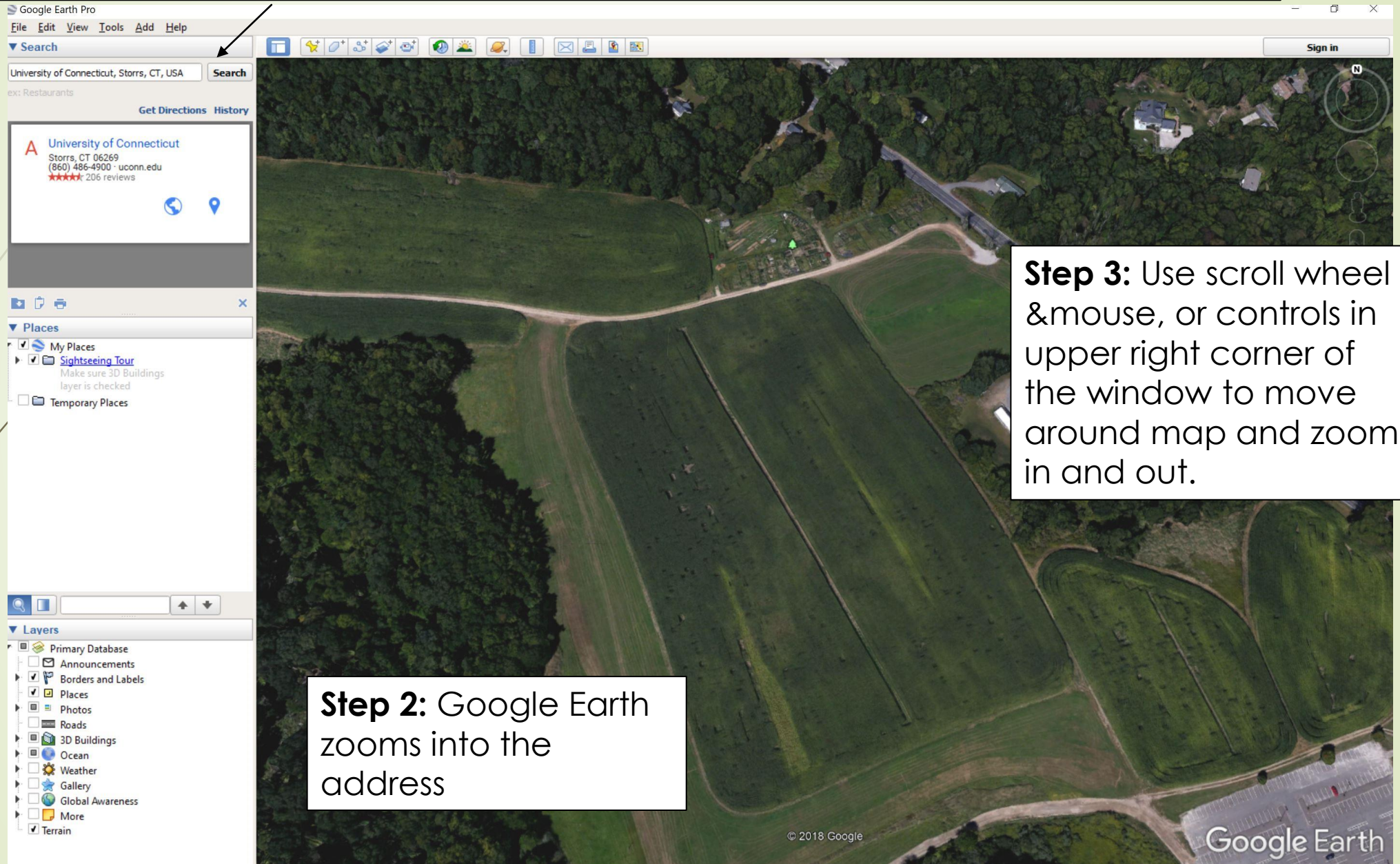
Step 4

GPS of Your Location



[This Photo](#) by Unknown Author is licensed under [CC BY-SA-NC](#)

Step 1: Enter Address or GPS Coordinates in the search bar and click "Search"



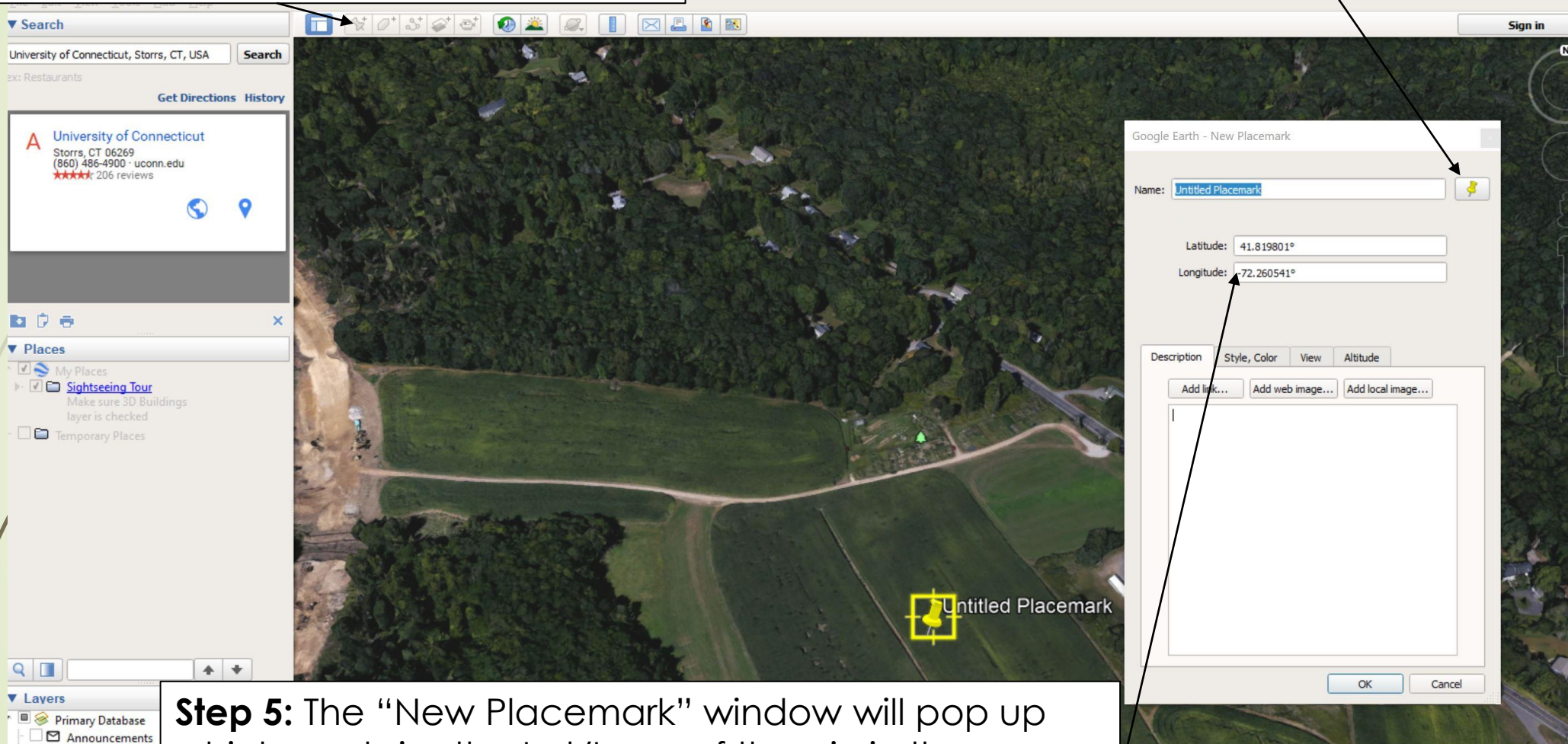
Step 3: Use scroll wheel & mouse, or controls in upper right corner of the window to move around map and zoom in and out.

Step 2: Google Earth zooms into the address

NOTE: This map is an example ONLY. There is NO industrial hemp grown at this location.

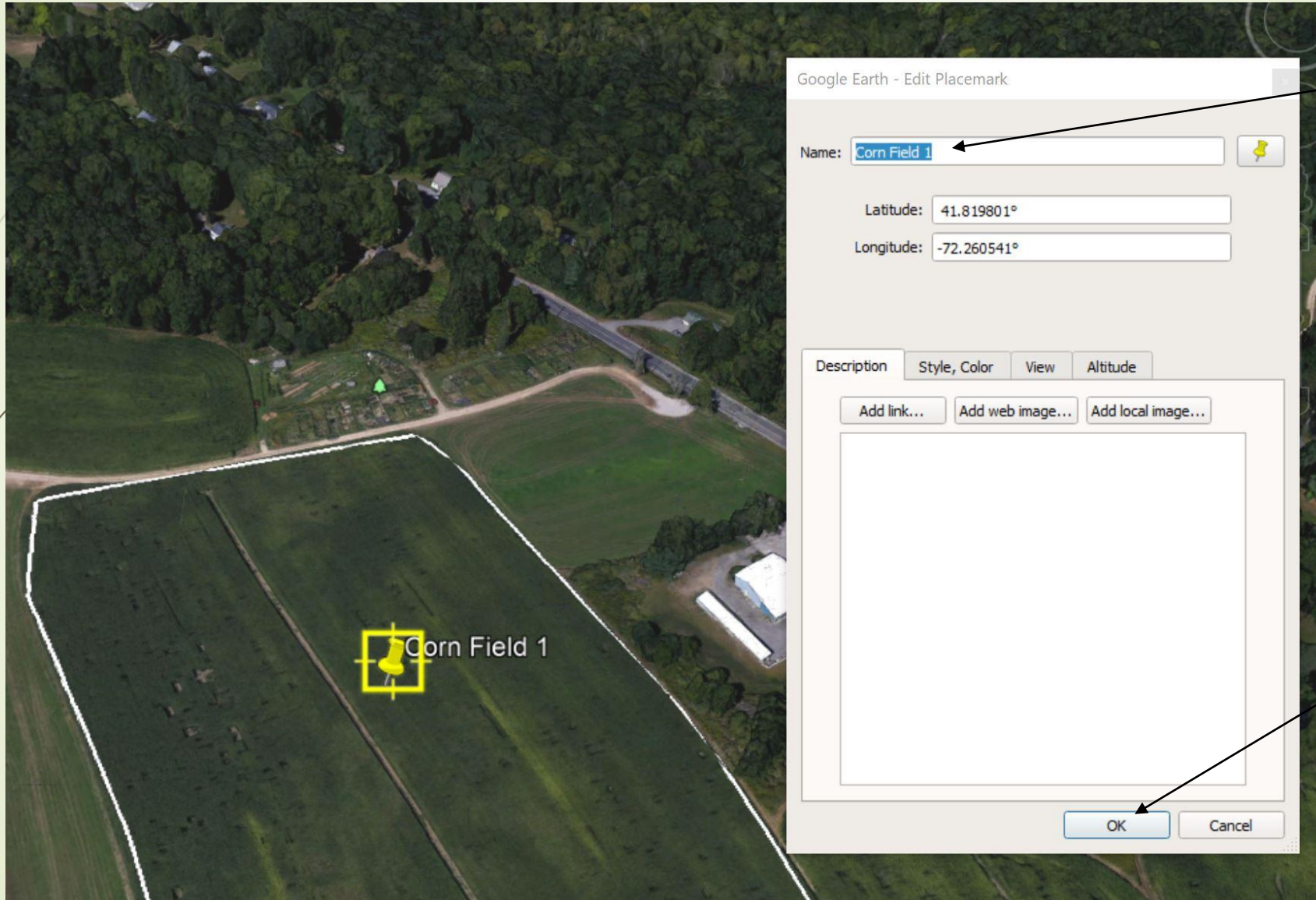
Step 4: Drop a pin by clicking on the thumb tack button. Click on the pin and hold the mouse button down and drag the pin to the center of the growing area.

Step 6: The pin default color is yellow and you can customize the pin color and icon by clicking on the pin in this window.



Step 5: The “New Placemark” window will pop up which contains the Lat/Long of the pin in the correct format. You can copy and paste these coordinates into the Department’s forms.

NOTE: This map is an example ONLY. There is NO industrial hemp grown at this location.



Step 7: Type the name of the growing location in the “Name” field.

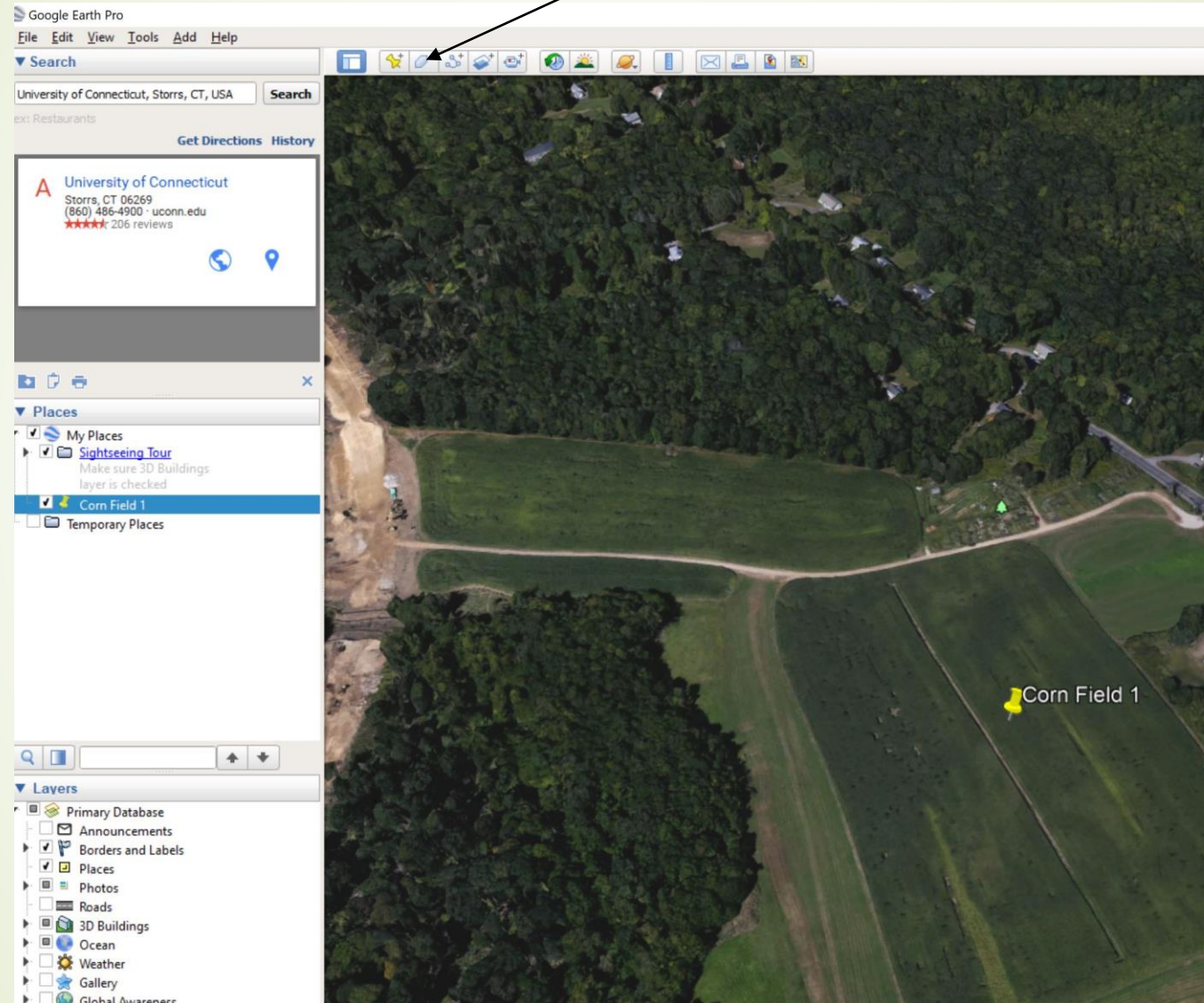
Step 8: When done entering the information click OK to close the window.

NOTE: This map is an example ONLY. There is NO industrial hemp grown at this location.



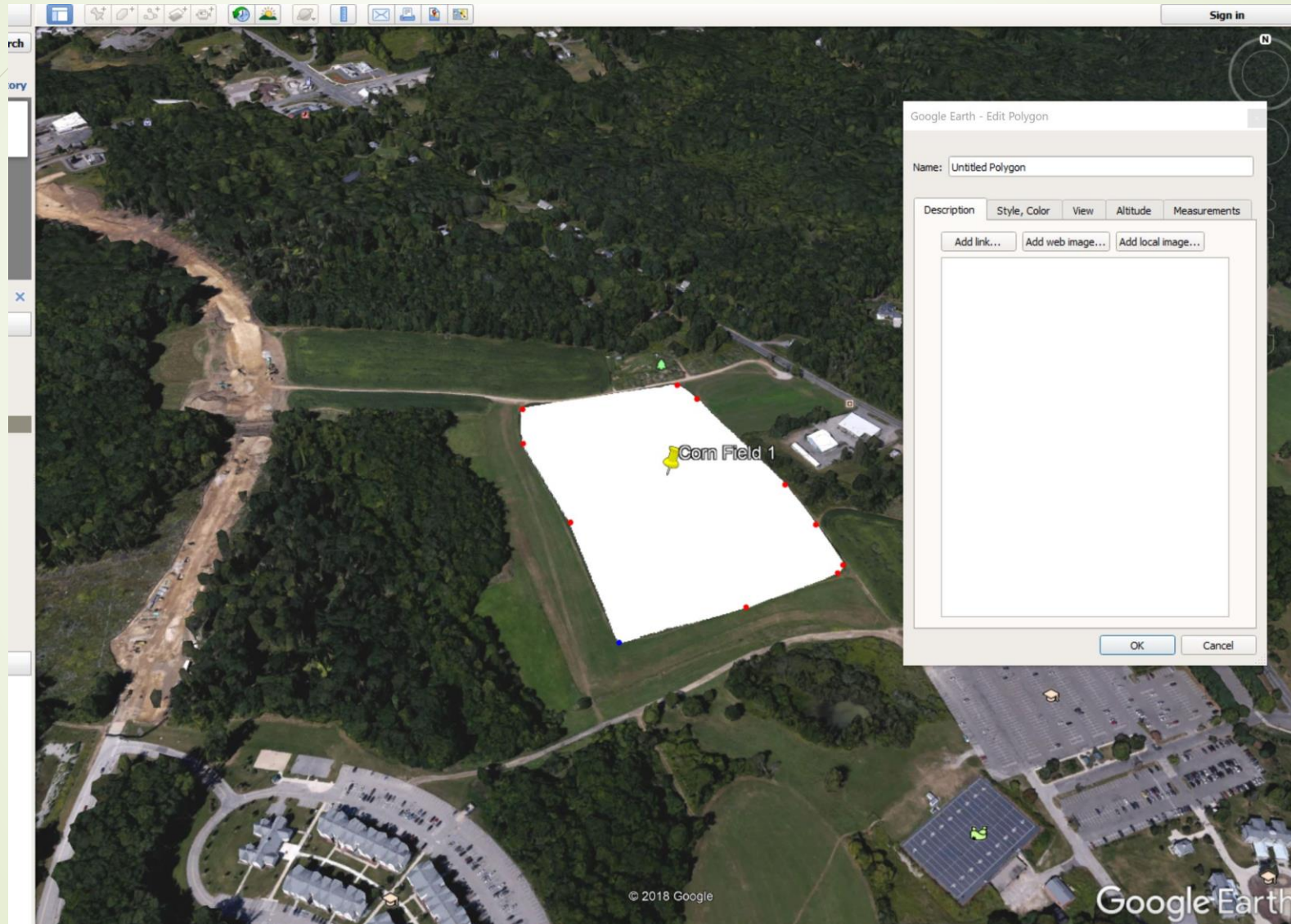
Creating a Polygon and Measuring Acreage

Step 1: Click on “Add Polygon” button.

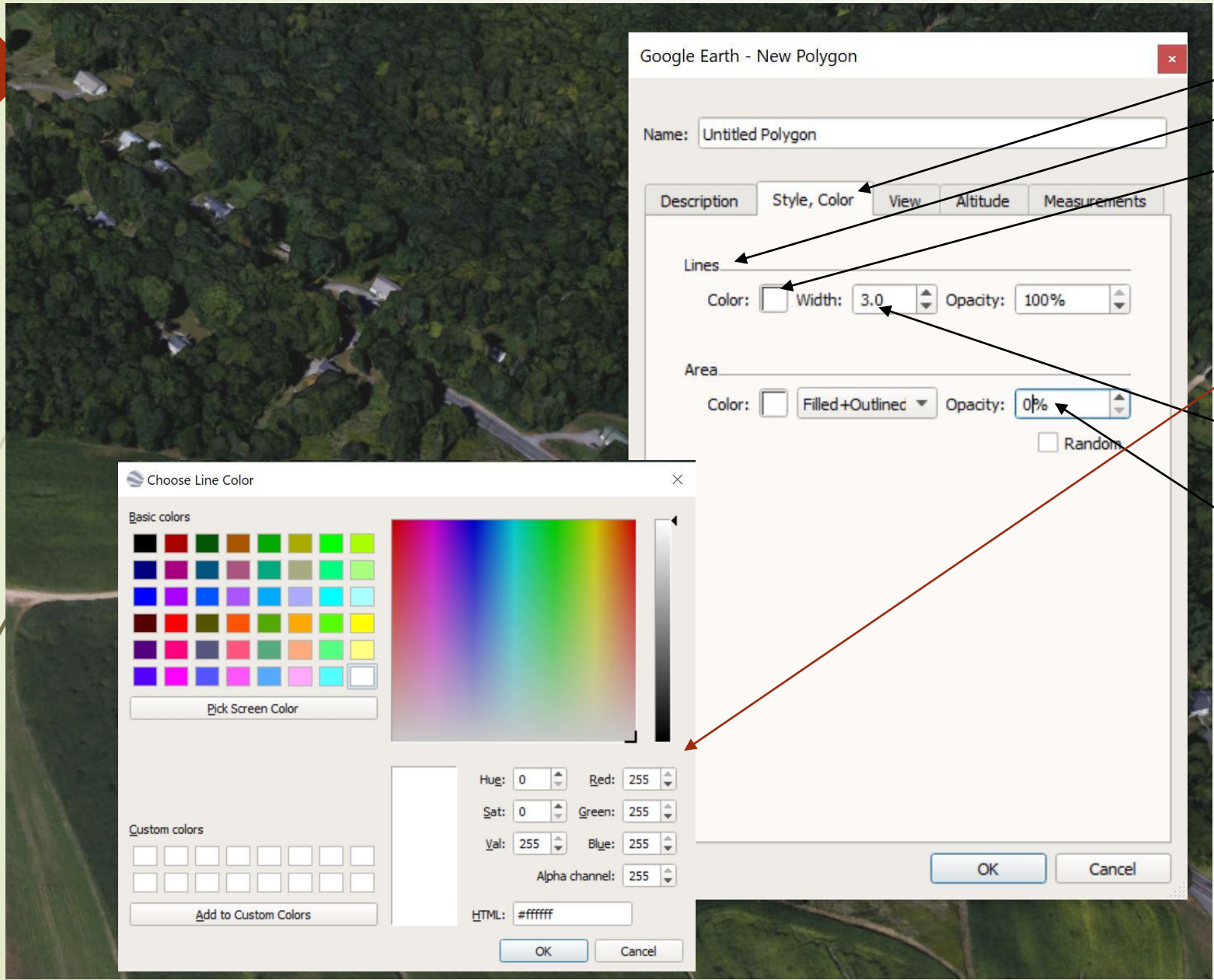


NOTE: This map is an example ONLY. There is NO industrial hemp grown at this location.

Step 2: Click a corner of the location and continue to click around the perimeter of the location until the whole field is outlined. If you need to start over, just close the pop-up window by clicking “cancel” at the bottom.

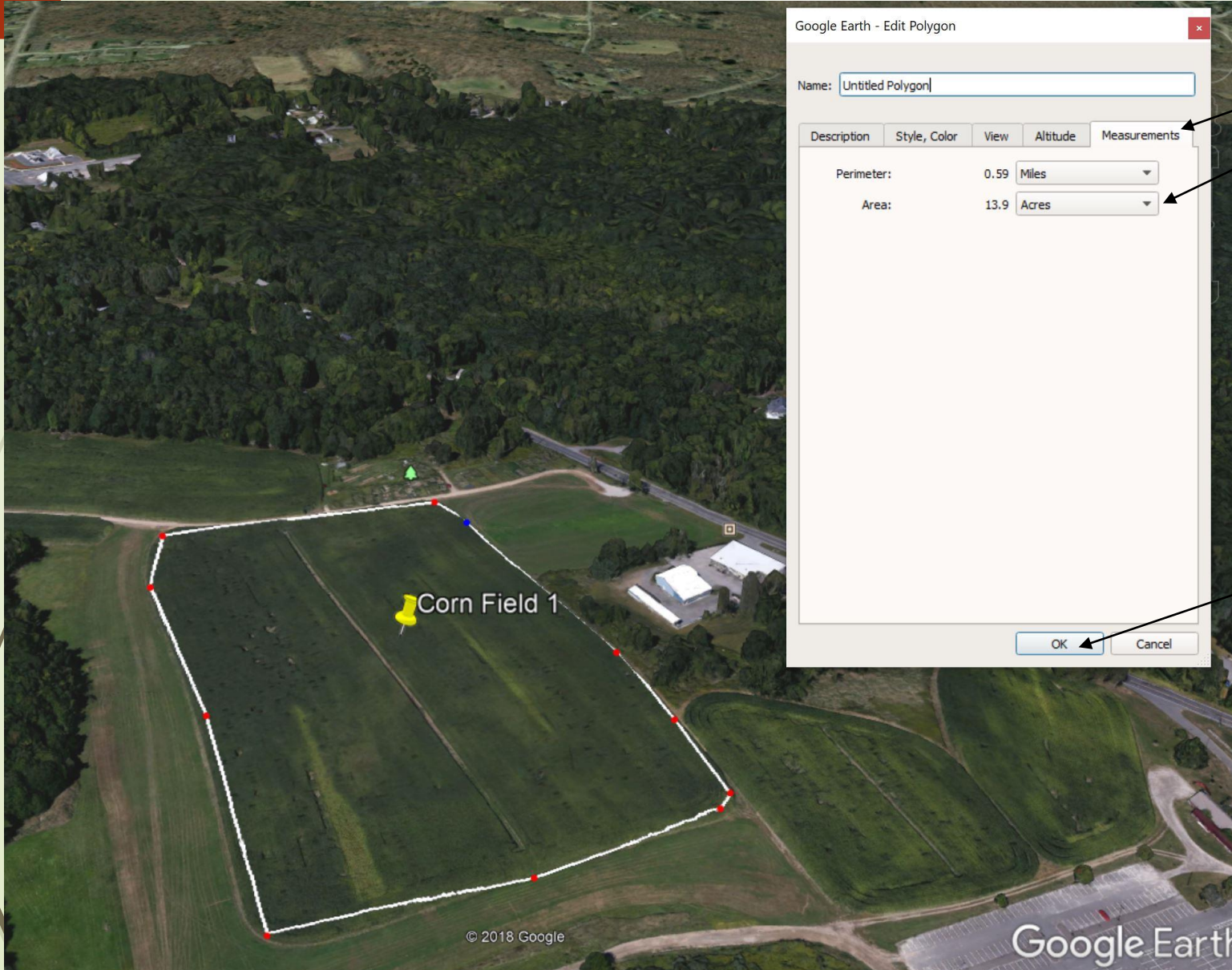


NOTE: This map is an example ONLY. There is NO industrial hemp grown at this location.



Step 3: In the pop-up window, click on the “Style, Color” tab.
Under the “Lines” area
A. Change the floor by clicking on the white box, selecting a color in the second pop-up window, and then clicking “OK”.
B. B. Increase the width of the line to at least 3pt.
C. In the “Area” field, change the “Opacity” to 0%. **This is a critical step. The Department must be able to see the land area inside the polygon.*

NOTE: This map is an example ONLY. There is NO industrial hemp grown at this location.



Google Earth - Edit Polygon

Name: Untitled Polygon

Description	Style, Color	View	Altitude	Measurements
Perimeter:		0.59	Miles	
Area:		13.9	Acres	

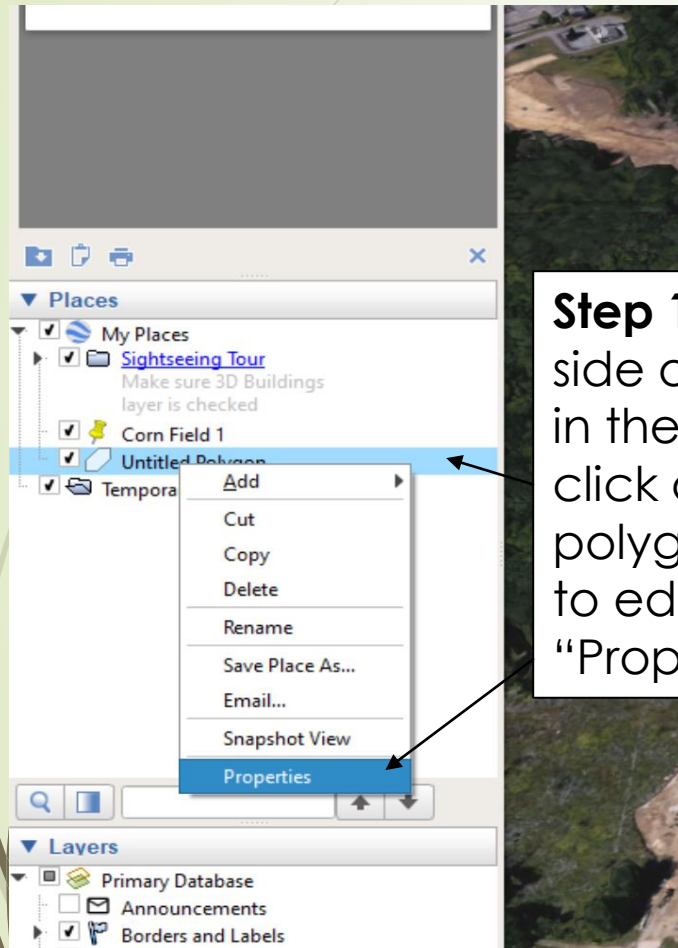
OK Cancel

Step 4: Click on the “Measurements” tab. Change the “Area” to “Acres”.
**The acreage inside your polygon will auto calculate.*

Step 5: Click “OK” to close the pop-up window.

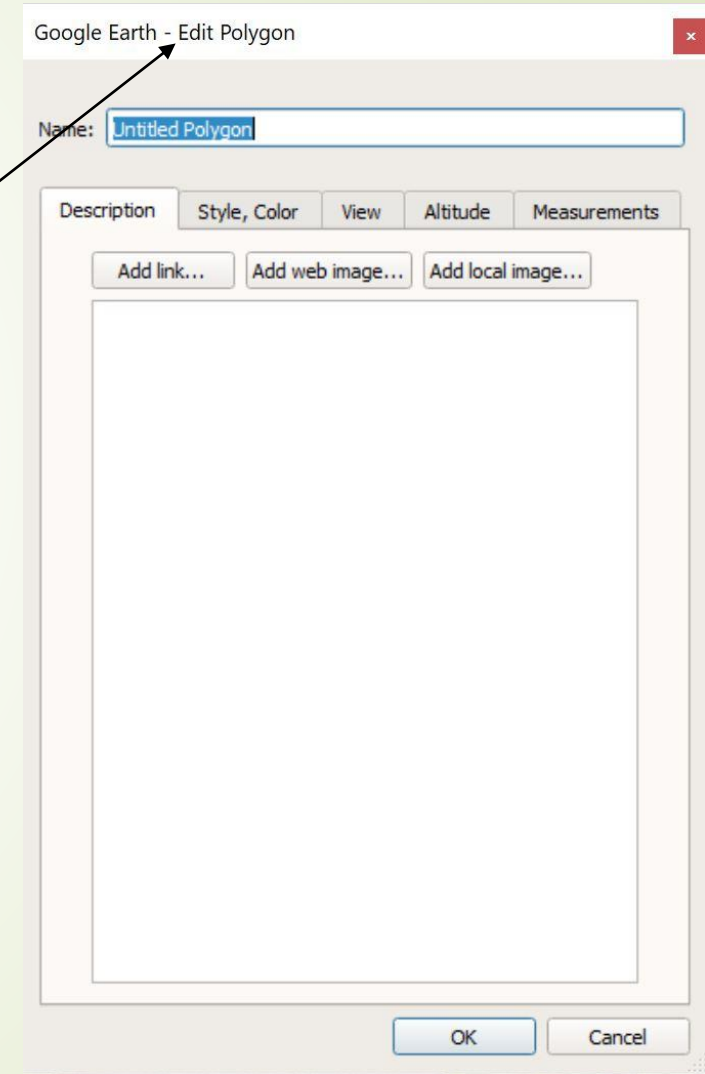
NOTE: This map is an example ONLY. There is NO industrial hemp grown at this location.

How to Edit the Pin and Polygon



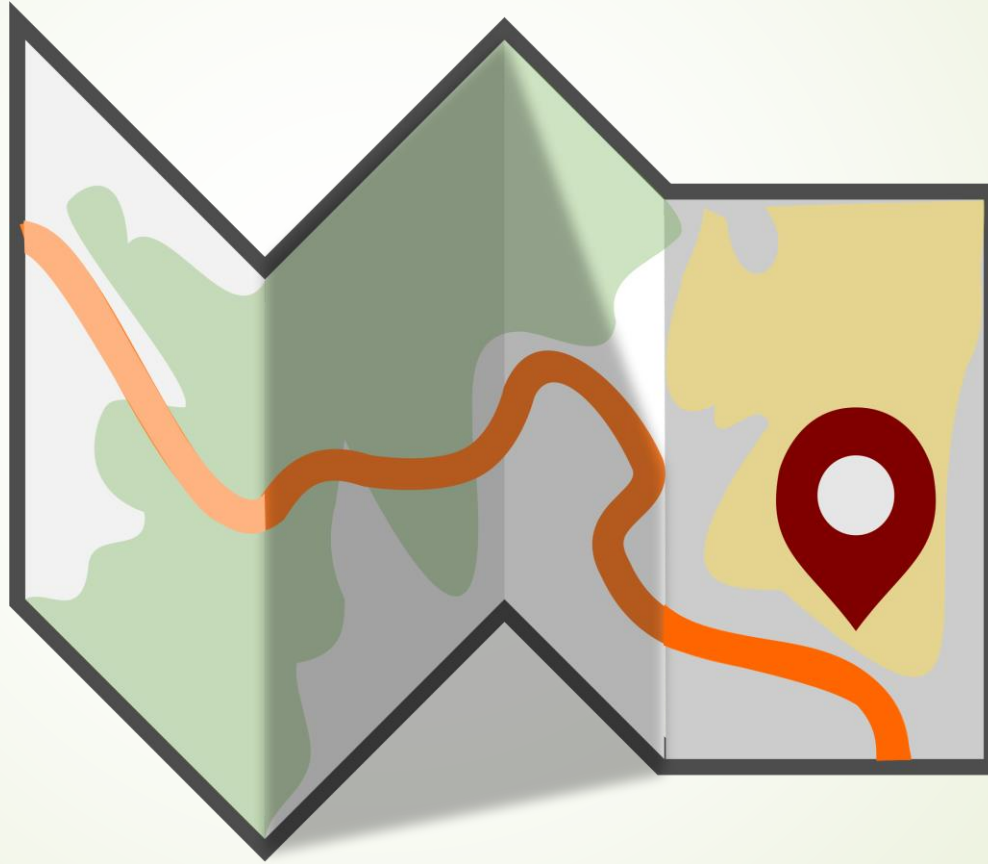
Step 1: On the left side of the screen in the tool bar, right click on the pin of polygon you want to edit. Click on "Properties".

Step 2: An "Edit" window will pop up and you may edit the information



NOTE: This map is an example ONLY. There is NO industrial hemp grown at this location.

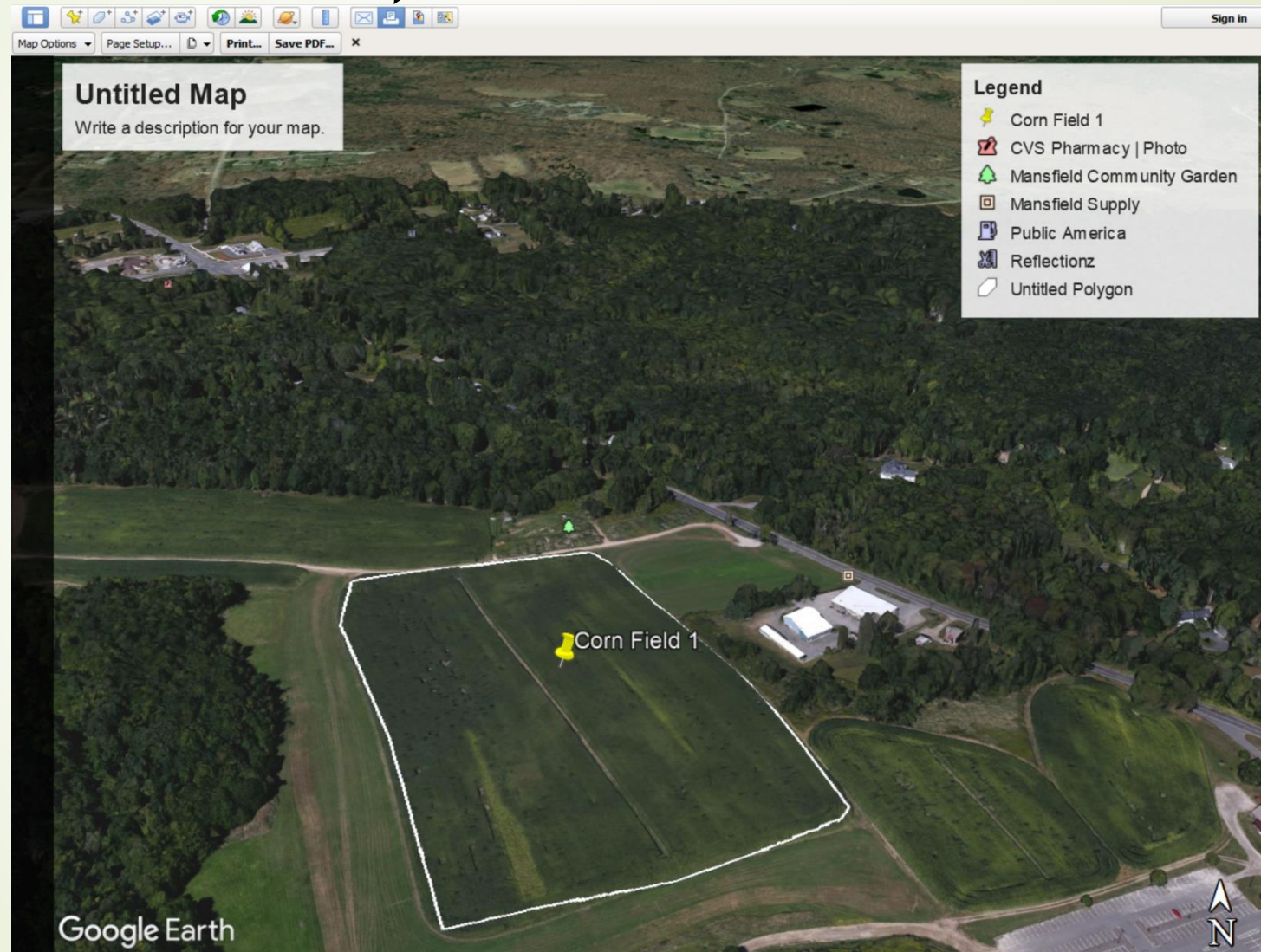
Labeling and Printing Your Map



[This Photo](#) by Unknown Author is licensed under [CC BY-NC](#)

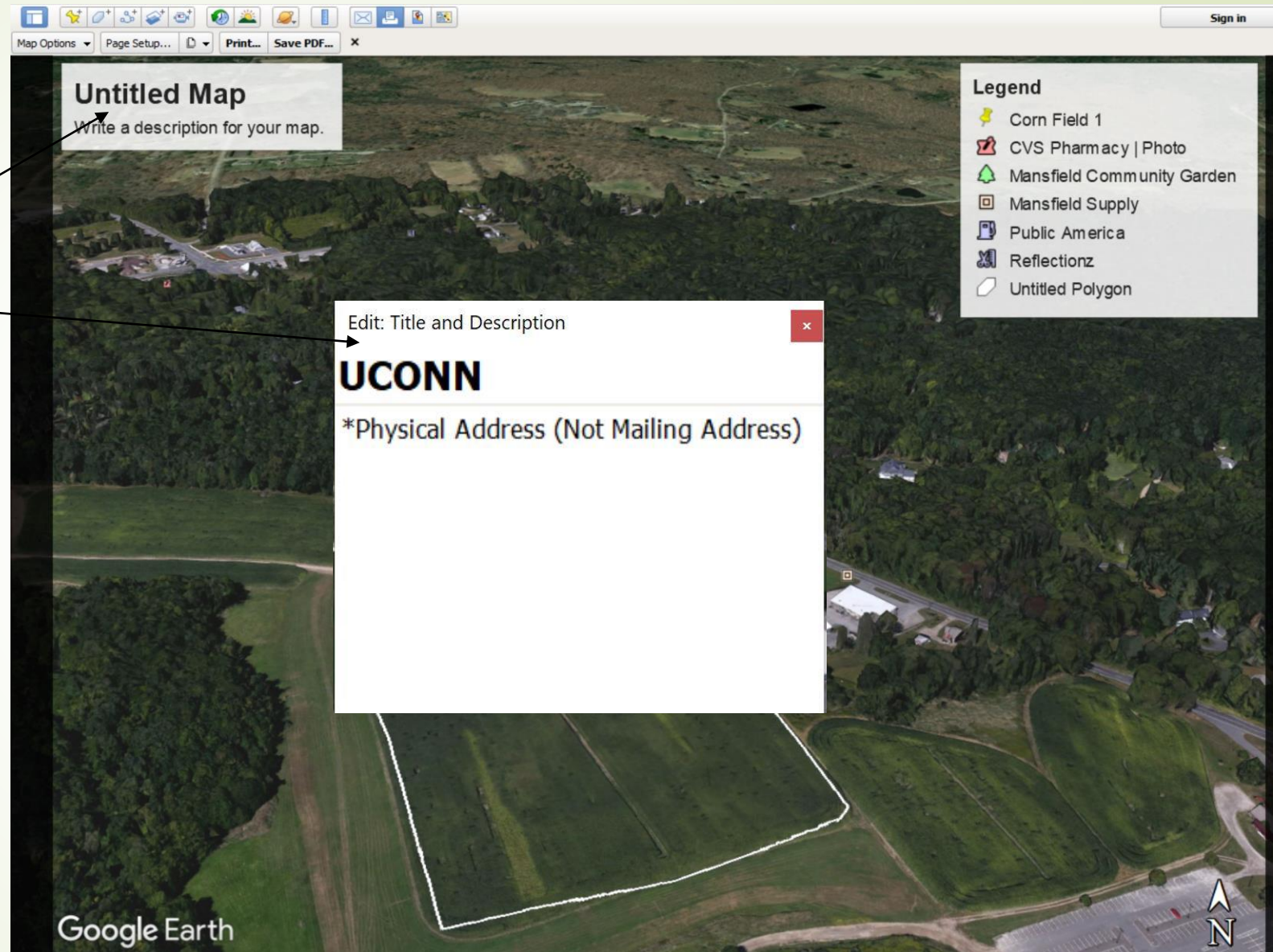
Step 1: Click the “ Print” button in the toolbar.

Note: Your screen will change to Print Layout, and some new boxes will appear on the screen.



NOTE: This map is an example ONLY. There is NO industrial hemp grown at this location.

Step 2: To edit the title, click on the box and a window will pop-up. Enter your edits to the pop-up window. **You MUST include your name and the location address.**

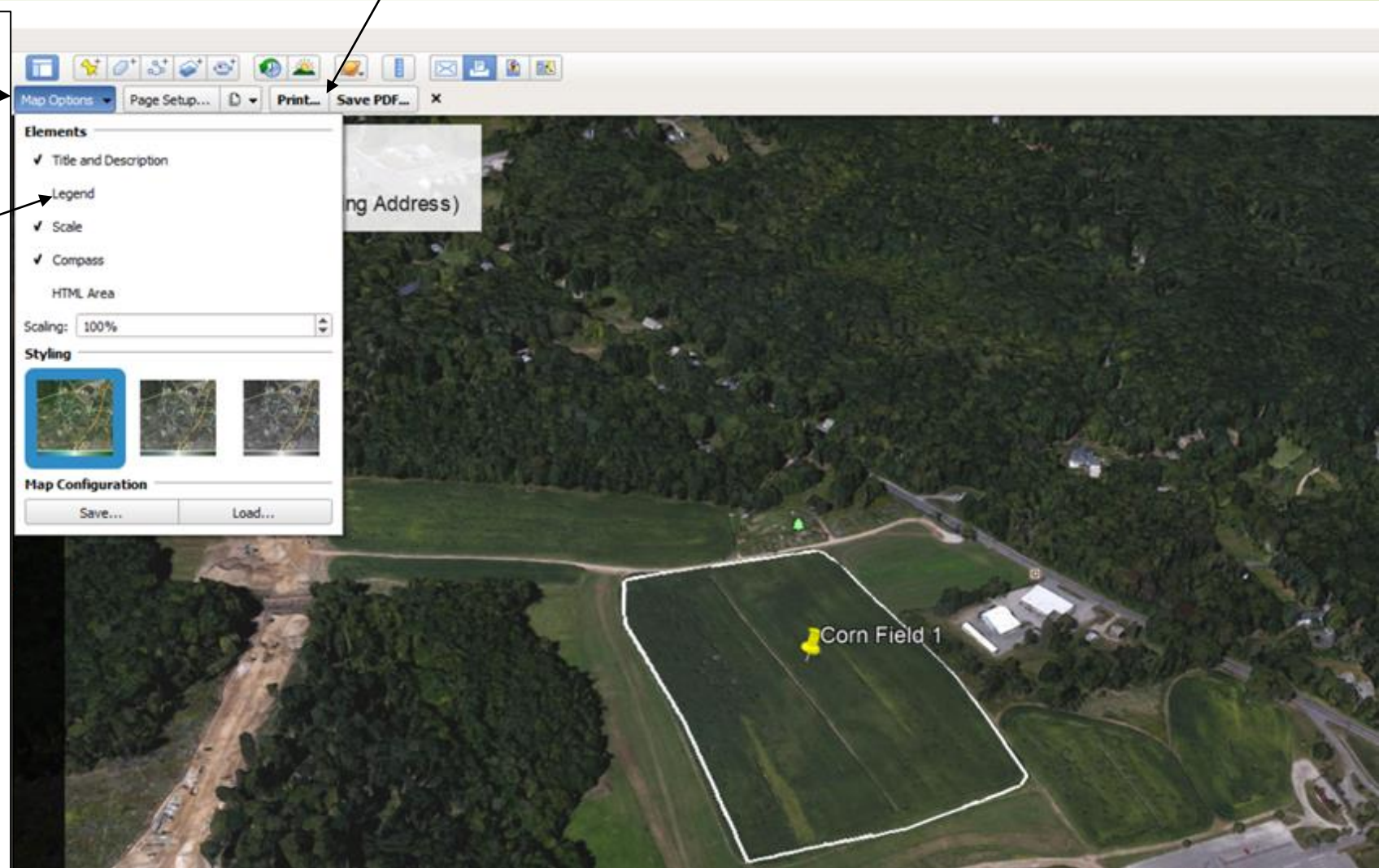


NOTE: This map is an example ONLY. There is NO industrial hemp grown at this location.


Step 4: In the toolbar, click the “print button for a paper copy or “Save PDF” for a PDF copy.

Step 3: Click the “Map Options” button and remove the default Legend by clicking on it.

Click anywhere on the screen to exit the menu.



NOTE: This map is an example ONLY. There is NO industrial hemp grown at this location.



Another Option to Submit a Map of Your Location

- ▶ Print a COLOR map of your location from any mapping program (Google Maps, MapQuest, Yahoo Maps, etc).
- ▶ Legibly handwrite the information on the map. Use a sharpie or a wide marker so the information is clear.
 - ▶ Your name
 - ▶ Address of the location (not mailing address)
 - ▶ Draw a point on each building/ field being requested for registration
 - ▶ **Write the Lot ID next to the point**
 - ▶ If the location is a field, draw an outline of each where you propose to grow hemp.
 - ▶ Provide the GPS Coordinates of the center of the lots on a separate page, which also includes the corresponding address(s), acreage/ square footage, and Lot ID.

Farm Service Agency

Contact your local County Farm Service Agency to obtain Lot ID Numbers (Farm #, Tract#, Field #, Subfield Numbers)

- ▶ Find Your Local Service Center
- ▶ FSA county offices are located in USDA Service Centers
- ▶ <https://www.farmers.gov/service-center-locator>
- ▶ Reminder: Each growing location must have an individual Lot ID number.
- ▶ Each hemp variety must have an individual Lot ID number
- ▶ Lot ID numbers must be uploaded into eLicense.

Contact the Connecticut Department of Agriculture

- ▶ Phone: 860-713-2502
- ▶ Email: AGR.hemp@ct.gov
- ▶ Visit the Department of Agriculture's website at <https://portal.ct.gov/DOAG/Regulatory/Regulatory/Hemp-Home-Page> for additional hemp resources.



This Photo by Unknown Author is licensed under [CC BY-NC](#)