

Agricultural Report

Connecticut Department of Agriculture
 Dannel P. Malloy, Governor
 Steven K. Reviczky, Commissioner



Wednesday, May 9, 2018

SATELLITE VESSEL MONITORING SYSTEM ENSURES OYSTER SAFETY

Bureau of Aquaculture

On October 20, 2017, the Department of Agriculture (DoAg)'s, Bureau of Aquaculture implemented a voluntary vessel monitoring system (VMS) project in conjunction with the dredging of the federal channel in the Housatonic River in Stratford. This area is the largest and most productive designated public natural seed oyster bed in Connecticut.

Shellfish companies were allowed to participate in the oyster seed transplant program by a voluntary agreement requiring the installation of DoAg's VMS issued devices. Seventy-two vessels are participating and preliminary reports estimate that approximately 300,000 bushels of oysters have been removed from the Housatonic River under two transplant programs with a value of \$15 million.

DoAg, the Connecticut Department of Energy and Environmental Protection (DEEP), and many industry members acknowledge the VMS project has provided access to oysters previously not accessible under the requirements of the National Shellfish Sanitation Program Model Ordinance (NSSP-

MO) pursuant to NSSP MO Chapter IV @.03(D.)(1.)(b.)(ii.).

In accordance with the NSSP MO Chapter V.@.04 A., the authority must develop and maintain an effective program to control the harvest, transport, replanting, and security of shellstock until the end of the complete relay activity to prevent shellstock from being illegally diverted to direct marketing.

The VMS units continue to enable DoAg and DEEP to ensure the transplanted oysters remain where planted for a minimum of six months and vessels do not remove oysters prematurely among those 72 vessels participating. The voluntary program has and continues to demonstrate the effectiveness of the electronic VMS equipment to remotely monitor oysters remain where transplanted for the required depuration period.

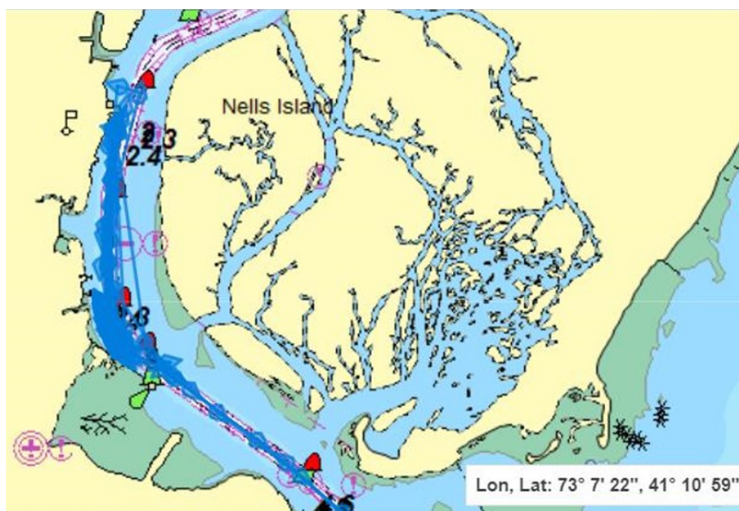
OUR NEWEST ADDITIONS

Over the past few months, the DoAg, Bureau of Aquaculture has successfully filled three vacant positions. New staff members include an environmental analyst, fisheries biologist, and research vessel engineer. These appointments replace staff members who have retired or moved on to different positions.

Rick Seiden has more than twenty years of experience in the Connecticut shellfish industry. He took a five-year hiatus to explore other endeavors but missed being on the water. He joins us as a research



*Rick Seiden,
 DoAg Research Vessel Engineer*



Above is an example of the track generated by a boat with VMS installed working in the Housatonic River.

(continued on Page 3)

NORTHEAST EGGS/USDA

Per doz. Grade A and Grade A white in cartons to retailers (volume buyers)

XTRA LARGE	.96	1.10
LARGE	.90	1.04
MEDIUM	.81	.94

NEW ENGLAND SHELL EGGS

Per doz. Grade A brown in carton delivered store door. (Range)

XTRA LARGE	2.14	2.35
LARGE	2.13	2.29
MEDIUM	1.50	1.65
SMALL	.82	.92

LANCASTER, PA LIVESTOCK

Avg. Dressing. Per cwt. Unless noted

	LOW	HIGH
SLAUGHTER COWS Avg. Dressing		
breakers 75-80% lean	56.50	61.50
boners 80-85% lean	56.00	61.50
lean 88-90% lean	49.00	55.50
SLAUGHTER STEERS		
Hi Ch/Prime 3-4	119.00	123.00
Choice 2-3	115.00	118.50
Select 1-2	107.00	114.00
SLAUGHTER HOLSTEINS		
Choice 2-3	83.00	85.50
Select 1-2	78.00	83.00
SLAUGHTER HEIFERS		
Choice 2-3	115.50	118.00
Select 1-2	111.00	114.00
CALVES - Graded bull		
No 1 110-130 lbs	105.00	115.00
No 1 94-108 lbs	130.00	130.00
SLAUGHTER LAMBS: Woolled & Shorn		
Markets: Choice and Prime 2-3		
90-110 lbs	230.00	250.00
110-130 lbs	200.00	245.00
130-150 lbs	185.00	195.00
150-200 lbs	170.00	195.00
SLAUGHTER EWES: Good 2-3		
80-120 lbs	85.00	105.00
120-160 lbs	75.00	100.00
160-200 lbs	70.00	80.00
200-300 lbs	62.00	75.00
SLAUGHTER KIDS: Sel 1		
20-40 lbs	120.00	165.00
40-60 lbs	165.00	195.00
60-80 lbs	195.00	230.00
80-100 lbs	215.00	250.00
SLAUGHTER NANNIES/DOES: Sel 1		
80-130 lbs	195.00	225.00
130-180 lbs	205.00	235.00
SLAUGHTER BUCKS/BILLIES: Sel 1		
100-150 lbs	255.00	290.00
150-250 lbs	325.00	375.00

NEW HOLLAND, PA. HOG AUCTION

Per cwt.

52-56	200-300 lbs	50.00	56.00
48-52	200-300 lbs	45.00	51.00
	300-350 lbs	45.00	46.00
	350-400 lbs	42.00	45.00
Sows, US 1-3			
	300-500 lbs	37.00	44.50
	500-725 lbs	42.00	48.00

DAIRY REPLACEMENTS

By the head.

SHORT BRED COWS (1-3 MONTHS)		
SUPREME	1700.00	1700.00
APPROVED	1125.00	1550.00
MEDIUM	725.00	1050.00

WHOLESALE FRUITS & VEGETABLES

Boston Terminal and Wholesale Grower Prices
CONNECTICUT AND NEW ENGLAND GROWN

	LOW	HIGH
ALFALFA SPROUTS, 5 LBS	14.00	15.00
APPLE, CORTLAND, XFCY, 72	30.00	31.00
APPLE, CORTLAND, XFCY, 80	30.00	31.00
APPLE, CORTLAND, XFCY, 88	30.00	31.00
APPLE, FUJI, US FANCY, 56	24.00	24.00
APPLE, FUJI, US FANCY, 80	24.00	24.00
APPLE, FUJI, US FANCY, 88	24.00	24.00
APPLE, FUJI, US FANCY, 125	20.00	20.00
APPLE, GALA, #1, 12-3LB, 2-1/2"	21.00	21.00
APPLE, GOLD DEL, #1, 12-3LB	20.00	20.00
APPLE, MAC, XFCY, TRYPK 80	30.00	31.00
APPLE, MAC, XFCY, TRYPK 88	30.00	31.00
APPLE, MAC, XFCY, TRYPK 100	24.00	24.00
APPLE, MAC, USFCY, TRYPK 80	21.00	21.00
APPLE, MAC, USFCY, TRYPK 88	21.00	21.00
APPLE, MAC, USFCY, TRYPK 125	17.00	17.00
APPLE, MAC, USFCY, TRYPK 138	17.00	17.00
APPLE, RED DEL, XFCY, 88	23.00	23.00
APPLE, RED DEL, FCY, 64	24.00	24.00
APPLE, RED DEL, FCY, 72	24.00	24.00
APPLE, RED DEL, FCY, 80	24.00	24.00
APPLE, RED DEL, #1, 12-3LB	20.00	20.00
BEAN SPROUTS, 10 LBS	6.00	7.00
BEAN SPROUTS, 12-12 OZ	12.00	15.00
CIDER, 4-1 GALLON	22.00	22.00
CIDER, 9-1/2 GALLON	26.00	26.00
FIDDLEHEADS, PER LB	8.00	8.00
PARSNIPS, 20 LB LOOSE, MED	25.00	25.00
PARSNIPS, 18-1 LB, MEDIUM	23.00	23.00
POTATO, RNDRED, #1, SZA, 50LB	14.00	14.00
POTATO, RNDRED, #1, SZB, 50LB	16.00	17.00
TOMS, GHSE, ONVINE, 11 LB	16.00	16.00

BOSTON SHIPPED IN

Price Range. Per unit.

ASPARAGUS, WA, 28 LB/BNCH, L	64.00	66.00
ASPARAGUS, WA, 28LB/BN, STD	64.00	66.00
BOK CHOY, FL, 50 LBS	18.00	24.00
CABBAGE, GREEN, FL, 50 LB, M	14.00	15.00
CABBAGE, GRN, ORG, FL, 45LB, M/L	28.00	28.00
CABBAGE, SAVOY, GA, 40 LB, M/L	18.00	20.00
COLLARDS, GA, 12 BNCH/CTN	12.00	14.00
CUKES, WAXED, FL, 1-1/9, M	22.00	24.00
DANDELION GRNS, FL, 12	18.00	18.00
ENDIVE, FL, 1-1/9, 24	18.00	18.00
ESCAROLE, FL, 1-1/9, 18	17.00	18.00
KALE, MULTI, CA, 24	24.00	24.00
LEEK, NJ, 12 BNCHS/CTN	16.00	16.00
LETT, BSTN GHS, CD, CLAM, 12-4	16.00	17.00
LETT, RED, GRNLF, CA/AZ, 24	26.00	30.00
MACHE, GHS, PA, 3 LBS	12.00	13.00
MESCLIN MIX, CA, 3 LBS	6.00	7.00
MUSTARD, CRLY, GA, 12	14.00	14.00
PARSLEY, PLAIN, NJ, 60BN/CTN	20.00	20.00
PARSLEY, CURLY, NJ, 60 BN	20.00	20.00
PEAS, ENGLISH, CA, BU	60.00	64.00
PEPPERS, FL, 1-1/9, LARGE	18.00	18.00
POTATO, WHT, FL, 3/4-1-5/8", 50LB	60.00	65.00
POTATO, YLW, FL, 3/4-1-5/8", 50LB	63.00	65.00
RADISHES, CA, 24 BN/CRATE	14.00	15.00
RHUBARB, OR, OPNFIELD, 20 LB	40.00	40.00
SPINACH, FLAT, NJ, 24	12.00	12.00
SPINACH, SAVOY, CA, 24	20.00	24.00
SWISS CHARD, MX CLR, TX, 12	18.00	18.00
TOMS, CHRRY, FL, 12-1PT BSKT	13.00	14.00
TOMS, GRAPE, FL, 20 LB, LOOSE	18.00	18.00

MIDDLESEX LIVESTOCK AUCTION

Middlefield, CT - May 7, 2018

	LOW	HIGH
Bob Calves:		
45-60 lbs.	35.00	405.00
61-75 lbs.	65.00	70.00
76-90 lbs.	85.00	90.00
91-105 lbs.	95.00	100.00
106 lbs. & up	105.00	110.00
Farm Calves	112.50	115.00
Starter Calves	25.00	30.00
Veal Calves	90.00	100.50
Feeder Heifers	112.50	120.00
Beef Heifers	80.00	82.00
Feeder Steers	65.00	92.50
Beef Steers	73.50	86.00
Feeder Bulls	85.00	155.00
Beef Bulls	69.00	108.00
Replacement Cows	n/a	n/a
Replacement Heifers	n/a	n/a
Boars	n/a	n/a
Sows	1@	28.00
Butcher Hogs each	n/a	n/a
Feeder Pigs each	2@	55.00
Sheep each	100.00	220.00
Lambs each	140.00	225.00
Goats each	100.00	355.00
Kid Goats each	75.00	262.50
Canners up to		50.00
Cutters	51.00	54.00
Utility Grade Cows	55.00	58.00
Rabbits each	5.00	25.00
Chickens each	4.00	20.00
Ducks each	4.00	19.00

HARTFORD REGIONAL MARKET FARMERS' MARKET FLOWERS

Price published is \$/unit listed.

PERENNIAL, 1 GAL	9.00	10.00
PERENNIAL, 2 GAL	12.00	12.00
HANGER, FLOWER, 10"	15.00	20.00
HANGER, FLOWER, 11"	12.00	15.00
HNGR, FLWR, 11", 2 FOR	25.00	25.00
HANGER, FLOWER, 12"	20.00	25.00
COMBO POTS, 6", EA	7.00	7.00
ASSTD 4.5" POTS, EA	3.50	3.50
ASSTD 4.5" POTS, TRAY	30.00	30.00
ASSTD 4" POTS, TRAY	20.00	20.00
48 PLANT FLAT, EA	10.00	20.00
48 PLT FLAT, 3 FOR	25.00	25.00
WINDOW BOX	15.00	15.00
WINDOW BOX, 2 FOR	25.00	25.00
GERANIUMS, /TRAY	25.00	25.00
GERANIUMS, 2 TRAYS	45.00	45.00
VEG PLTS, 6 PK, EA	2.00	2.00
PANSIES, /FLAT	8.00	8.00
PANSIES, WNDW X, EA	10.00	10.00
CAPE DAISY, /TRAY	20.00	20.00
CAPE DAISY, 2 6PKS	5.00	5.00
HIBISCUS PLT, EA	25.00	25.00

NEW HOLLAND, PA. FEEDER PIGS

May 2. Per cwt.

US 1-2	40-50 lbs	60.00	130.00
	60-70 lbs	95.00	100.00
US 2	20-30 lbs	120.00	140.00
	40-40 lbs	200.00	200.00

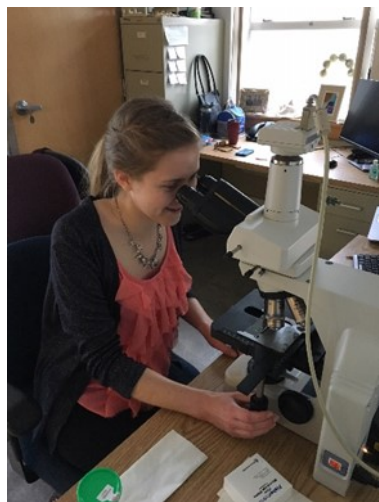
MONTHLY FEEDER CATTLE

Greencastle, PA. May 4. Per cwt.

Large 3 Holsteins		
300-400 lbs	81.00	106.00
400-500 lbs	80.00	86.00
500-600 lbs	83.00	86.00
600-700 lbs	77.00	89.00
700-800 lbs	71.00	80.00

(continued from Page 1)

vessel engineer, spending plenty of time on the water and fixing and maintaining our fleet. In his very small amount of spare time, Rick enjoys spending time with his pups, Oreo and Ollie.



*Emily Van Gulick,
DoAg Fish Biologist*

Emily Van Gulick hails from North Wales, PA, and currently serves as a fish biologist in our laboratory. Emily has a degree from the University of New Hampshire in marine, estuarine and freshwater biology. In college, Emily performed various research projects including examining the reproductive hormones of sea lampreys and field research in New Zealand observing the aquatic ecology of streams, protected and unprotected from agriculture. Prior to her current position, Emily worked seasonally for the Inland Fisheries Division of DEEP. In her spare time, Emily enjoys play-

ing the piano, painting, and spending time with her dog Sparky.

Kristin Russo joins us from Mystic Aquarium, where she served as the acting water quality lab manager. Kristin has a degree in biology/chemistry from Southern Connecticut State University, where she also performed her undergraduate research in environmental studies field, examining sediments from various harbors along the coast of Connecticut for heavy metals. Kristin returns to the agency as an environmental analyst after serving as an environmental intern for DoAg from August 2014-February 2015. When she is not running or reading, Kristin enjoys cooking and crafting.



*Kristin Russo,
DoAg Water Quality Lab Manager*

TIME IS RUNNING OUT TO COMPLETE THE 2017 CENSUS OF AGRICULTURE

The U.S. Department of Agriculture's (USDA) National Agricultural Statistics Service (NASS) is reminding New England farmers and ranchers that the window is closing on the opportunity to participate in the 2017 Census of Agriculture.

To date, NASS has received more than 1.5 million completed questionnaires, of which almost 23,000 are from New England. But both the national and New England return rates are currently lower than at this point in the 2012 Census.

NASS is encouraging New England producers who have not returned their completed Census questionnaires to do so as soon as possible to avoid phone and in-person follow-up.

(continued on Page 4)

ADVERTISEMENTS

FOR SALE

1-R. Blumenthal & Donahue is now Connecticut's first independent NATIONWIDE Agri-Business Insurance Agency.

Christmas tree growers, beekeepers, sheep breeders, organic farmers and all others, call us for all your insurance needs. 800-554-8049 or www.bludon.com

2-R. Farm, homeowner and commercial insurance—we do it all. Call Blumenthal & Donahue 800-554-8049 or www.bludon.com

3-R. Gallagher electric fencing for farms, horses, deer control, gardens, & beehives. Sonpal's Power Fence 860-491-2290.

4-R. Packaging for egg sales. New egg cartons, flats, egg cases, 30 doz and 15 doz. Polinsky Farm 860-376-2227.

5-R. Nationwide Agribusiness Insurance Program, endorsed by the CT Farm Bureau, save up to 23% on your farm insurance and get better protection. References available from satisfied farmers. Call Marci today at 203-444-6553.

29-R. Round hay bales. Large. Unwrapped. 1st cutting. Fertilized grass hay. \$40.00 a bale and up. 203-264-2217.

34-R. For Sale: Byron 103 sweet corn picker. Call 860-670-1275.

35-R. First cutting hay for sale. \$5.00 per bale. Call 860-881-4219.

37-R. 8' Moore Unidrill no till seed drill. Good condition. \$2,000.00 OBO. 860-355-1264.

38. International side dresser for International #140 fiberglass fertilizer hopper. All parts included. Good condition. \$750.00. 203-623-2956.

39-R. 4 acre irrigation pipe, old sickle bar mowers, plows, planters, wagon, springtooth harrow, hay rakes, chicken hoppers and feeders. 860-237-1107.

40. Irrigation pipe: 150 feet 160 PSI 1.25 Flex Coil. \$125.00. Call 203-387-3055.

41-R. 47+ acres, two hay fields, pond, stone walls, 540' frontage on Boston Turnpike (Rte. 44), 6 minute drive to UCONN. Property backs onto Willington Conservation Area and Nipmuck/Blue Trail. Horse/cattle, farming, vineyard potential. Asking \$295,000.00. 860-872-6637 or 860-614-5954.

WANTED

7-R. Livestock wanted: Dairy cattle, heifers of any age, beef cows, bulls, steers, feeder cattle, veal, groups of sheep and goats. RyanM01@comcast.net or 860-655-0958. If no answer, leave message. All calls returned.

MISCELLANEOUS

6-R. Farm/Land specializing in land, farms, and all types of Real Estate. Established Broker with a lifetime of agricultural experience and 40 years of finance. Representing both Buyers and Sellers. Call Clint Charter of Wallace-Tetreault Realty (860) 644-5667.

AG JOB CONNECTION

36-R. Vineyard Worker wanted who is willing and ready to learn Vineyard Management. Some pruning experience, general vineyard labor, valid CT DL. Clean DMV report. Ability to follow written and verbal instructions and lift 50 lbs. Lyme, CT. Contact Donna 917-858-9714.

(continued from Page 3)

New England producers can respond to the 2017 Census of Agriculture online at www.agcounts.usda.gov or by mail.

For more information about the 2017 Census of Agriculture or for assistance with the questionnaire, call 888-424-7828 or visit www.agcensus.usda.gov.

FOOD EXPORT USA INTERNSHIP

The Connecticut Department of Agriculture is pleased to announce it is accepting applications for a part-time intern. The agency is a member of Food Export USA (FEUSA), which works with producers of Connecticut food and agricultural products to expand their markets overseas. FEUSA will contract directly with the intern to promote educational activities, events, and other opportunities sponsored by FEUSA that assist Connecticut food companies with international exporting.

The internship will begin in September 2018 and run through the fall semester. Interested applicants can visit www.CTGrown.gov until May 31, 2018, for a complete job description and application instructions.

CONNECTICUT GROWN TENTS AVAILABLE

The Connecticut Department of Agriculture is pleased to offer Connecticut producers, farmers' markets, agricultural non-profits and agricultural organizations an opportunity to purchase Connecticut Grown tents through a cost-share program.

ORDER NOW

Connecticut Grown Tents

King Canopy
10' x 10' Steel Frame
Instant Pop-up Tents
White with full color Connecticut Grown logo
\$160 each, Limit of 2
Available to: farms, farmers' markets, ag organizations and ag non-profits

VISA/MC/DISCOVER
*MUST BE PRE-PAID

Email with scheduled pick-up dates, times and locations will be sent with order confirmation.

Place Order Here: www.ConnecticutGrownStore.com



The tents are 10'x10' King Canopy with the Connecticut Grown logo printed in color on all four peaks. Quantities are limited and pre-orders are now being accepted online at www.ConnecticutGrownStore.com.

Estimated availability by June 1, 2018. Details regarding scheduled pick-up dates, times and location will be emailed to all confirmed orders. Shipping is not available for tents.

CONNECTICUT DEPARTMENT OF AGRICULTURE



CTGrown.gov

Advertising Rates: Fifteen or fewer words: \$3.75 per insertion. More than 15 words: 25 cents per word per insertion. Ads must be related to agriculture in Connecticut and are accepted on a first-come, first-served basis. Payment must be received by noon on Friday before publication the following Wednesday. Make check or money order payable to the Connecticut Dept. of Agriculture, and mail copy and remittance to the department at 450 Columbus Blvd., Suite 701, Hartford, CT 06103. For more information contact Jane.Murdock@ct.gov or call 860-713-2588.

POSTMASTER: Send address changes to the Connecticut Department of Agriculture, 450 Columbus Blvd., Suite 701, Hartford, CT 06103.

Print subscriptions expire Dec. 31, 2019.

CONNECTICUT DEPARTMENT OF AGRICULTURE
www.CTGrown.gov
860-713-2500

Commissioner steven.reviczky@ct.gov	Steven K. Reviczky 860-713-2501
Agricultural Development and Resource Conservation linda.piotrowicz@ct.gov	Linda Piotrowicz 860-713-2503
Regional Market linda.piotrowicz@ct.gov	Linda Piotrowicz 860-566-3699
Regulatory Services bruce.sherman@ct.gov	Dr. Bruce Sherman 860-713-2504
State Veterinarian mary.lis@ct.gov	Dr. Mary J. Lis 860-713-2505
Aquaculture david.carey@ct.gov	David Carey 203-874-2855

**VOL. XCVIII
No. 18
May 9, 2018**