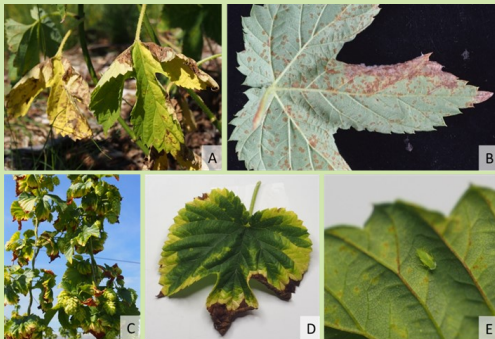


# Connecticut Weekly AGRICULTURAL REPORT

Dannel P. Malloy, Governor  
Steven K. Revczky, Commissioner



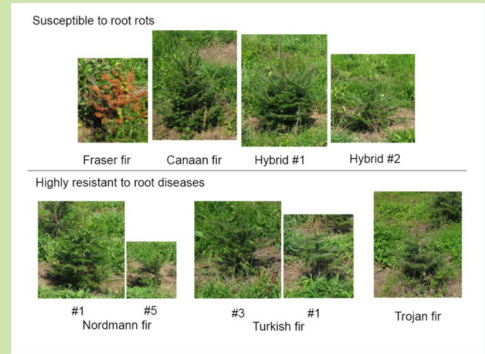
Connecticut Department of Agriculture  
January 31, 2018



A - B: Symptoms of downy mildew on hops leaves;  
C - E: Symptoms of leafhoppers and leafhopper burn.



A beekeeper picking up extractor equipment at the storage facility.



Representatives for the species of true firs grown in Connecticut to investigate their suitability as Christmas trees.

## DEPARTMENT OF AGRICULTURE SEEKING SPECIALTY CROP BLOCK GRANT PROPOSALS

Mark Hood and Jaime Smith, Bureau of Agricultural Development and Resource Conservation

The Connecticut Department of Agriculture (DoAg) is seeking concept proposals for 2018 Specialty Crop Block Grant Program (SCBGP).

The purpose of SCBGP is to enhance the domestic and foreign competitiveness of specialty crops, which are an increasingly important commodity area.

The USDA defines specialty crops as fruits, vegetables, tree nuts, dried fruits, horticulture, Christmas trees, turfgrass/sod, nursery and greenhouse crops, including floriculture.

Funding is made available through the United States Department of Agriculture (USDA), Agricultural Marketing Service (AMS). The maximum grant award is \$75,000. Matching funds are not required.

Eligible applicants include commodity groups, agricultural organizations, colleges and universities, municipalities, state agencies, and agricultural nonprofits. SCBGP funds must benefit the industry as a whole and not a single organization, business, or commercial product. Individual farms or businesses are encouraged to take part as partners with eligible applicants rather than apply themselves.

Applicants should describe the specific issue or need the project will address and how the project will produce measurable outcomes for the specialty crop industry. Additional information and application materials are available at [www.CTGrown.gov/grants](http://www.CTGrown.gov/grants).

Concept proposals must be submitted by email to Jaime Smith, [jaime.smith@ct.gov](mailto:jaime.smith@ct.gov) no later than 4:00 p.m. on Friday, March 2, 2018. Qualifying applicants will be notified and invited to complete a full grant application due in April 2018. The full applications will be carefully reviewed and evaluated by a

review committee, which will make recommendations for funding in May 2018. All of the applications recommended for funding by the review committee will be combined into one grant submission to USDA AMS from the Connecticut Department of Agriculture in June 2018.

If approved by USDA AMS, the Connecticut Department of Agriculture will notify applicants (fall of 2018). Projects cannot begin until after January 1, 2019, and must be completed by September 30, 2021.

Since 2006, the Connecticut Department of Agriculture has been awarded nearly \$4.4 million in SCBGP funding from the USDA AMS. Eighty-nine projects have been funded through this award.

Examples of successful SCBGP funded projects from previous years include research to determine the feasibility of hop cultivation and production in Connecticut (conducted by the Connecticut Agricultural Experiment Station), establishment of a honey extractor rental program (Connecticut Beekeepers Association), and research for genetic improvement of Christmas trees for Connecticut farms (Connecticut Christmas Tree Growers Association).

### Connecticut Agricultural Experiment Station (CAES)

In 2013, DoAg subgranted CAES \$47,526 to conduct research to determine the feasibility of hop cultivation and production in Connecticut. The project evaluated five varieties (AlphaAroma, Cascade, Newport, Summit, and Perle) of high alpha acid disease-resistant hop cultivars as well as traditional high trellis versus low trellis systems. This study demonstrated the feasibility of hop production in Connecticut by using proper varieties, cultural practice, and IPM.

(continued on Page 3)

**NORTHEAST EGGS/USDA**Per doz. Grade A and Grade A white  
in cartons to retailers (volume buyers)

XTRA LARGE	1.57	1.72
LARGE	1.54	1.68
MEDIUM	1.14	1.27

**NEW ENGLAND SHELL EGGS**Per doz. Grade A brown in  
carton delivered store door. (Range)

XTRA LARGE	2.63	2.67
LARGE	2.58	2.71
MEDIUM	1.57	1.75
SMALL	.77	.87

**LANCASTER, PA LIVESTOCK**

Avg. Dressing. Per cwt. Unless noted

	LOW	HIGH
<b>SLAUGHTER COWS</b> Avg. Dressing		
breakers 75-80% lean	55.00	59.50
boners 80-85% lean	55.00	59.50
lean 88-90% lean	47.00	52.50
<b>SLAUGHTER STEERS</b>		
Hi Ch/Prime 3-4	125.00	130.00
Choice 2-3	120.00	124.00
Select 1-2	110.00	117.00
<b>SLAUGHTER HOLSTEINS</b>		
Hi Ch/Prime 3-4, few	85.00	86.00
Choice 2-3	82.00	84.00
Sel 1-2	81.00	82.00
<b>SLAUGHTER HEIFERS</b>		
Hi Ch/Prime 2-3	122.00	126.50
Choice 2-3	116.00	119.50
Select 1-2	112.00	114.00
<b>CALVES</b> - Graded bull		
No 1 90-130 lbs	100.00	111.00
No.1 80-88 lbs	90.00	90.00
<b>SLAUGHTER LAMBS:</b> Woolled & Shorn		
Markets: Choice and Prime 2-3		
80-90 lbs	250.00	270.00
90-110 lbs	220.00	250.00
110-130 lbs	210.00	250.00
130-150 lbs	160.00	177.00
150-200 lbs	160.00	170.00
<b>SLAUGHTER EWES:</b> Good 2-3		
80-120 lbs	115.00	135.00
120-160 lbs	85.00	110.00
160-200 lbs	85.00	105.00
200-300 lbs	75.00	95.00
<b>SLAUGHTER KIDS:</b> Sel 1		
40-60 lbs	170.00	180.00
60-80 lbs	185.00	210.00
80-100 lbs	190.00	210.00
<b>SLAUGHTER NANNIES/DOES:</b> Sel 1		
80-130 lbs	200.00	240.00
130-180 lbs	230.00	255.00
<b>SLAUGHTER BUCKS/BILLIES:</b> Sel 1		
100-150 lbs	225.00	260.00
150-250 lbs	320.00	350.00

**NEW HOLLAND, PA. HOG AUCTION**

Per cwt.

52-56	200-300 lbs	55.50	65.00
	300-350 lbs	62.00	65.00
48-52	200-300 lbs	50.00	57.00
	300-350 lbs	54.00	63.00
	350-400 lbs	44.00	49.00
Sows, US 1-3	300-500 lbs	39.00	46.00
	500-700 lbs	41.00	49.00
Boars	500-700 lbs	5.00	6.00

**WHOLESALE FRUITS & VEGETABLES**Boston Terminal and Wholesale Grower Prices  
CONNECTICUT AND NEW ENGLAND GROWN

	LOW	HIGH
ALFALFA SPROUTS, 5 LBS	14.00	15.00
ALFALFA SPROUTS, 12-4 OZ	16.00	18.00
APPLE, CORTLAND, XFCY, 80	30.00	31.00
APPLE, CORTLAND, XFCY, 88	30.00	31.00
APPL, CRTLAND, FCY, 12-3LB,	22.00	22.00
APPLE, FUJI, US FANCY, 80	24.00	24.00
APPLE, FUJI, US FANCY, 88	24.00	24.00
APPLE, FUJI, US FANCY, 125	24.00	24.00
APPLE, GALA, XFANCY, 88	28.00	28.00
APPLE, GALA, XFANCY, 100	28.00	28.00
APPLE, GALA, US FANCY, 88	24.00	24.00
APPLE, GALA, US FANCY, 100	24.00	24.00
APPLE, GOLD DEL, FCY, 64	24.00	24.00
APPLE, GOLD DEL, FCY, 72	24.00	24.00
APPLE, GOLD DEL, FCY, 80	24.00	24.00
APPLE, GOLD DEL, FCY, 88	24.00	24.00
APPLE, GOLD DEL, #1, 12-3LB	24.00	24.00
APPL, HNYCRSP, XFCY, TRAY, 80	60.00	60.00
APPL, HNYCRSP, XFCY, TRAY, 88	60.00	60.00
APPLE, HNYCRSP, XFY, TRAY, 100	56.00	56.00
APPLE, HNYCRSP, FCY, TRAY, 64	30.00	45.00
APPLE, HNYCRSP, FCY, TRAY, 72	30.00	45.00
APPLE, HNYCRSP, FCY, TRAY, 80	30.00	38.00
APPLE, HNYCRSP, FCY, TRAY, 88	38.00	38.00
APPLE, HNYCRSP, FCY, TRY, 100	38.00	38.00
APPLE, MAC, XFCY, TRYPK 72	30.00	31.00
APPLE, MAC, XFCY, TRYPK 80	30.00	31.00
APPLE, MAC, XFCY, TRYPK 100	26.00	26.00
APPLE, MAC, USFCY, TRYPK 80	21.00	21.00
APPLE, MAC, USFCY, TRYPK 88	21.00	21.00
APPLE, RED DEL, FCY, 72	24.00	24.00
APPLE, RED DEL, FCY, 80	24.00	24.00
APPLE, RED DEL, FCY, 125	20.00	21.00
APPLE, RED DEL, #1, 12-3LB	24.00	24.00
BEAN SPROUTS, 10 LBS	6.00	7.00
BEAN SPROUTS, 12-12 OZ	12.00	15.00
BEET, CHIOGGA, 25 LB, M-L, LSE	14.00	14.00
BEETS, GOLD, 25 LB, M, LOOSE	14.00	14.00
BEETS, RED, 25 LB, M, LOOSE	8.00	8.00
CARROT, S-M, 25LB, LOOSE	11.00	11.00
CARROT, L, 25LB SACK, LOOSE	11.00	11.00
CIDER, 4- 1 GALLON	22.00	22.00
CIDER, 9-1/2 GALLON	26.00	26.00
POTATO, YLLW, #1, CHEF, 50LB	15.00	16.00
SQUASH, ACORN, L, 1-1/9	18.00	18.00
SQUASH, ACORN, M, 1-1/9	16.00	16.00
SQUASH, BUTTERNUT, M, 1-1/9	14.00	16.00
SQUASH, KABOCHA, M, 1-1/9	16.00	18.00
TURNIP, WHITECAPE, M-L, 1-1/9	30.00	30.00

**USDA-NORTHEAST RETAIL  
CONVENTIONAL DAIRY**

Price Range. Per unit.

BUTTER, 1 LB	3.19	4.99
CHEESE, 8 OZ	1.67	3.50
CHEESE, 1 LB	2.99	3.99
CHEESE, SHRED, 1 LB	1.99	4.99
CHEESE, SHRED, 8 OZ	1.88	3.00
COTTAGE CHEESE, 16OZ	1.99	2.50
CREAM CHEESE, 8 OZ	.99	2.00
ICE CREAM, 48-64 OZ	1.88	4.99
MILK, ALL, GALLON	2.59	2.59
SOUR CREAM, 16 OZ	1.49	2.00
YOGURT, GREEK, 4-6 OZ	.83	1.25
YOGURT, GREEK, 32 OZ	2.50	4.99

**MIDDLESEX LIVESTOCK AUCTION**

Middlefield, CT - January 29, 2018

	LOW	HIGH
Bob Calves:		
45-60 lbs.	35.00	40.00
61-75 lbs.	60.00	65.00
76-90 lbs.	72.50	80.00
91-105 lbs.	90.00	112.00
106 lbs. & up	185.00	220.00
Farm Calves	225.00	240.00
Starter Calves	25.00	30.00
Veal Calves	80.00	117.50
Feeder Heifers	90.00	100.00
Beef Heifers	64.50	105.00
Feeder Steers	105.00	155.00
Beef Steers	55.00	81.00
Feeder Bulls	n/a	n/a
Beef Bulls	60.00	76.00
Replacement Cows	n/a	n/a
Replacement Heifers	n/a	n/a
Boars	n/a	n/a
Sows	1@	40.00
Butcher Hogs	n/a	n/a
Feeder Pigs each	40.00	80.00
Sheep each	50.00	160.00
Lambs each	115.00	230.00
Goats each	145.00	325.00
Kid Goats each	115.00	210.00
Canners	up to	52.00
Cutters	53.00	56.00
Utility Grade Cows	58.00	63.00
Rabbits each	5.00	20.00
Chickens each	4.00	24.00
Ducks each	5.00	8.00

**USDA ORGANIC BROWN EGGS**

Wholesale, per carton, delivered to first receivers.

XLARGE DOZEN	2.81	3.80
XLARGE 1/2 DOZEN	1.80	1.95
LARGE DOZEN	2.30	3.50
LARGE 1/2 DOZEN	1.71	1.90

**DAIRY REPLACEMENT COWS**

New Holland, PA, January 24, 2018. By the head.

FRESH COWS:		
APPROVED	1200.00	1575.00
MEDIUM	800.00	1125.00
SHORT BRED COWS (1-3 MONTHS)		
APPROVED	975.00	1375.00
SPRINGING COWS (7-8 MONTHS)		
APPROVED	900.00	1450.00
MEDIUM	650.00	825.00
CULLED COWS	300.00	1100.00
SPRINGING HEIFERS (7-9 MONTHS)		
APPROVED	975.00	1375.00
MEDIUM	675.00	950.00
BRED HEIFERS (4-6 MONTHS):		
APPROVED	925.00	1200.00
MEDIUM	750.00	775.00
SHORT BRED HEIFERS (1-3 MONTHS)		
APPROVED	725.00	875.00
OPEN HEIFERS (100-300 LBS)		
APPROVED	150.00	375.00
OPEN HEIFERS (300-600 LBS)		
APPROVED	350.00	450.00
OPEN HEIFERS (600-900 LBS)		
APPROVED	535.00	735.00
BULLS		
600-900 LBS	800.00	800.00
900-1200 LBS	925.00	950.00
1200-1500 LBS	975.00	975.00



Continued from Page 1

### Connecticut Beekeepers Association

In 2012, DoAg awarded the Connecticut Beekeepers Association \$9,930 to establish a honey extractor rental program. Funds were used for the purchase of four honey extractors and associated equipment (uncapping tank, hot knife, pail, filters and refractometer). The extractors are kept at four geographically diverse locations throughout Connecticut and are available to the public for a \$25 rental fee. The program income generated through rental fees has been used for repair and replacement of rental equipment and will allow the self-sustaining program to continue for many years.

### Connecticut Christmas Tree Growers Association

In 2010, DoAg provided CCTGA with \$36,092 for genetic improvement of Christmas trees for Connecticut farms. CCTGA partnered with researchers at CAES to identify true firs of high genetic quality in order to start a permanent seed plantation. Field tests of 3,000 plug transplants of Canaan fir and different families of Turkish and Nordman firs were conducted to determine those with the best survival, growth, color, and shape. Five exceptional trees (Canaan fir, Trojan fir, Fraser fir, Nordmann fir, Turkish fir) found in these trials were used to establish a permanent seed production nursery to sustain competitive Connecticut Christmas tree production. This project also permitted CCTGA to collaborate with five other states and the county of Denmark in a fir genetic improvement project.

## ADVERTISEMENTS

### FOR SALE

1-R. Blumenthal & Donahue is now Connecticut's first independent NATIONWIDE Agri-Business Insurance Agency. Christmas tree growers, beekeepers, sheep breeders, organic farmers and all others, call us for all your insurance needs. 800-554-8049 or [www.bludon.com](http://www.bludon.com)

2-R. Farm, homeowner and commercial insurance—we do it all. Call Blumenthal & Donahue 800-554-8049 or [www.bludon.com](http://www.bludon.com)

3-R. Gallagher electric fencing for farms, horses, deer control, gardens, & beehives. Sonpal's Power Fence 860-491-2290.

4-R. Packaging for egg sales. New egg cartons, flats, egg cases, 30 doz and 15 doz. Polinsky Farm 860-376-2227.

5-R. Nationwide Agribusiness Insurance Program, endorsed by the CT Farm Bureau, save up to 23% on your farm insurance and get better protection. References available from satisfied farmers. Call Marci today at 203-444-6553.

9-R. Hay for sale from fertilized fields. \$4.50 per bale. 203-453-9865.

10-R Greenhouse furnaces, 300,000-400,000 BTU's. Price range from \$1,500 to \$3,000. Call Alex 203-223-4853.

12-R. Certified organic hay 4X5 net wrap July cut grass hay stored outside. \$40.00. July cut grass baleage 4X4 \$40.00. Falls Village, CT. 860-248-0362.

14-R. Modine Effinity 93 propane greenhouse heater Model PTC215. 199,950 BTU/Hr. Output and hanger kit. New, in box. \$1,500.00. 203-457-1304.

15-R. Hay for sale. Timothy/orchard grass mix, \$5.00 for first cut, \$6.00 for second cut. Call 860-536-2588. Bulk discounts available.

### WANTED

7-R. Livestock wanted: Dairy cattle, heifers of any age, beef cows, bulls, steers, feeder cattle, veal, groups of sheep and goats. [RyanM01@comcast.net](mailto:RyanM01@comcast.net) or 860-655-0958. If no answer, leave message. All calls returned.

13. Artisan Cheesemaker wanting to purchase a small farm in New London or Middlesex County. We will have a small amount of livestock and are wanting to grow fruits and peppers. Hoping to have a house on the farm as well, but not mandatory as long as I can build in the future. Please contact Julie at 516-801-0888.

### MISCELLANEOUS

6-R. Farm/Land specializing in land, farms, and all types of Real Estate. Established Broker with a lifetime of agricultural experience and 40 years of finance. Representing both Buyers and Sellers. Call Clint Charter of Wallace-Tetreault Realty (860) 644-5667.

**2017 CENSUS OF AGRICULTURE**  
YOUR VOICE. YOUR FUTURE. YOUR OPPORTUNITY.

**Respond Now**

**Be counted.** Answers to the Census of Agriculture can help grow your farm's future, shape farm programs, and boost services for communities and the industry.

**Respond Online.** [www.agcounts.usda.gov](http://www.agcounts.usda.gov)

For assistance completing the census, call toll-free (888) 424-7828.

[www.agcensus.usda.gov](http://www.agcensus.usda.gov)

United States Department of Agriculture  
National Agricultural Statistics Service



### NELSON CECARELLI MEMORIAL

Nelson Cecarelli, owner of Cecarelli Farms in Northford, was laid to rest on Friday, January 26, 2018. Hundreds attended the funeral service, which concluded with a procession led by a horse-drawn-wagon to his final resting place in Northford Cemetery.

Nelson was a lifelong Northford resident and the third generation of his family to farm the land his grandfather purchased in 1912. Cecarelli Farms celebrated their 100th anniversary in 2012. While under the guidance of Nelson the farm adapted to changing markets by expanding from a primarily wholesale operation to include restaurants sales, farmers' markets, and a CSA program.

Nelson ensured the farm would remain a working farm by preserving the land through the Department of Agriculture's Farmland Preservation program.

The Connecticut Department of Agriculture introduced Nelson to farmers' markets by connecting him with Wholesome Wave in Bridgeport, a nonprofit that brings fresh, locally-grown produce to underserved communities.

Nelson served on several agricultural boards and commissions at the local, state, and federal levels. He was also an advocate and practitioner of soil health through agricultural practices like deep zone tillage.

During the funeral service, friends and family members spoke of Nelson as humble, tough, driven, visionary, and honorable.



All fruit, vegetable, and honey producers currently certified with the Connecticut Department of Agriculture's Farmers' Market Nutrition Program (FMNP) must attend a recertification meeting to maintain their certification. The certification allows farms to accept the FMNP checks for fresh fruits, vegetables, and honey from WIC clients and income eligible seniors over the age of 60. Below is the list of meeting dates and locations.

- Thursday, February 1, 7:30 – 9:30 a.m. CT Farm Bureau Association, 78 Beaver Road, Wethersfield. (A Farm Transition Grant Training Workshop will immediately following the recertification meeting starting at 9:30 a.m.)
- Monday, February 5, 1:00 – 3:00 p.m. Litchfield County Extension Center, 843 University Dr, Torrington.
- Tuesday, February 13, 6:00 – 8:00 p.m. CT Ag Experiment Station, 153 Cook Hill Road, Windsor.
- Wednesday, February 21, 9:30 – 11:30 a.m. New London County Extension Center, 562 New London Turnpike, Norwich.
- Monday, March 12, 10:00 a.m. – 12:00 noon. CT Ag Experiment Station, 123 Huntington Street, New Haven. Consumer Protection will be offering scale certifications before and during this March 12 FMNP meeting. Farmers are encouraged to bring their scales to receive the required annual inspection. Additional information regarding scale certifications can be found in the Farmers' Market Reference Guide on CTGrown.gov.
- SNOW DATE for any meeting cancelled: Tuesday, March 20, 9:00 – 11:00 a.m. CT Ag Experiment Station, 153 Cook Hill Road, Windsor.

Please RSVP no later than 24 hours in advance of the meeting to Mark Hood at 860-713-2503 or Mark.Hood@ct.gov. Should a meeting be cancelled due to weather, attendees who RSVP will be contacted. Questions can be directed to Jaime Smith at 860-713-2503 or Jaime.Smith@ct.gov.

**Advertising Rates:** Fifteen or fewer words: \$3.75 per insertion. More than 15 words: 25 cents per word per insertion. Ads must be related to agriculture in Connecticut and are accepted on a first-come, first-served basis. Payment must be received by noon on Friday before publication the following Wednesday. Make check or money order payable to the Connecticut Dept. of Agriculture, and mail copy and remittance to the department at 450 Columbus Blvd., Suite 701, Hartford, CT 06103. For more information contact Jane.Murdock@ct.gov or call 860-713-2588.

POSTMASTER: Send address changes to the Connecticut Department of Agriculture, 450 Columbus Blvd. Suite 701, Hartford CT 06103.

Print subscriptions expire Dec. 31, 2017.

VOL. XCVIII, No. 4 January 31, 2018

CONNECTICUT DEPARTMENT  
OF AGRICULTURE  
www.CTGrown.gov 860-713-2500

Commissioner steven.reviczky@ct.gov	Steven K. Reviczky 860-713-2501
Agricultural Development and Resource Preservation linda.piotrowicz@ct.gov	Linda Piotrowicz 860-713-2503
Regional Market linda.piotrowicz@ct.gov	Linda Piotrowicz 860-566-3699
Regulatory Services bruce.sherman@ct.gov	Dr. Bruce Sherman 860-713-2504
State Veterinarian mary.lis@ct.gov	Dr. Mary J. Lis 860-713-2505
Aquaculture david.carey@ct.gov	David Carey 203-874-2855