



SFY 2022

ANNUAL STATISTICAL REPORT

PREPARED BY

Evaluation, Quality
Management, and
Improvement Division

portal.ct.gov/dmhas



Introduction

The Evaluation, Quality Management and Improvement (EQMI) Division at the Department of Mental Health and Addiction Services (DMHAS) is pleased to publish its sixth Annual Statistical Report.

This report makes key information more accessible to departmental stakeholders and the public: it includes data on clients served, demographic characteristics, types of services provided, residential and inpatient utilization, and substance use trends.

It is important to note that this report covers Fiscal Year 2022 (July 1, 2021 – June 30, 2022) and therefore the COVID-19 pandemic covers the entire fiscal year.

Providers began making adjustments to their service delivery in March and April 2020, thus, by the start of this reporting period, these pandemic-related business adjustments were in place. Largely, outpatient and community-based services were able to continue due to transitioning to telehealth service delivery platforms. Many congregate care settings needed to reduce their allowable capacities in order to observe social distancing in patient care areas. Impacts related to the pandemic will be noted and discussed as the data are presented.

To develop this report, we used data taken from DMHAS' Enterprise Data Warehouse on October 17, 2022.

Special thanks to all of the EQMI staff and University of Connecticut School of Social Work contractors who assisted with this report. Karin Haberlin coordinated the development of the report, while Kristen Miller, Hsiu-Ju Lin, Jeff Johnson, and Xiulan Wu compiled, tested, and analyzed the data. Kristen Miller developed the preliminary content of this report and Karin Haberlin created the design and layout in Canva.

Liz Feder, LMFT

Director, Evaluation, Quality Management and Improvement (EQMI)

Table of Contents

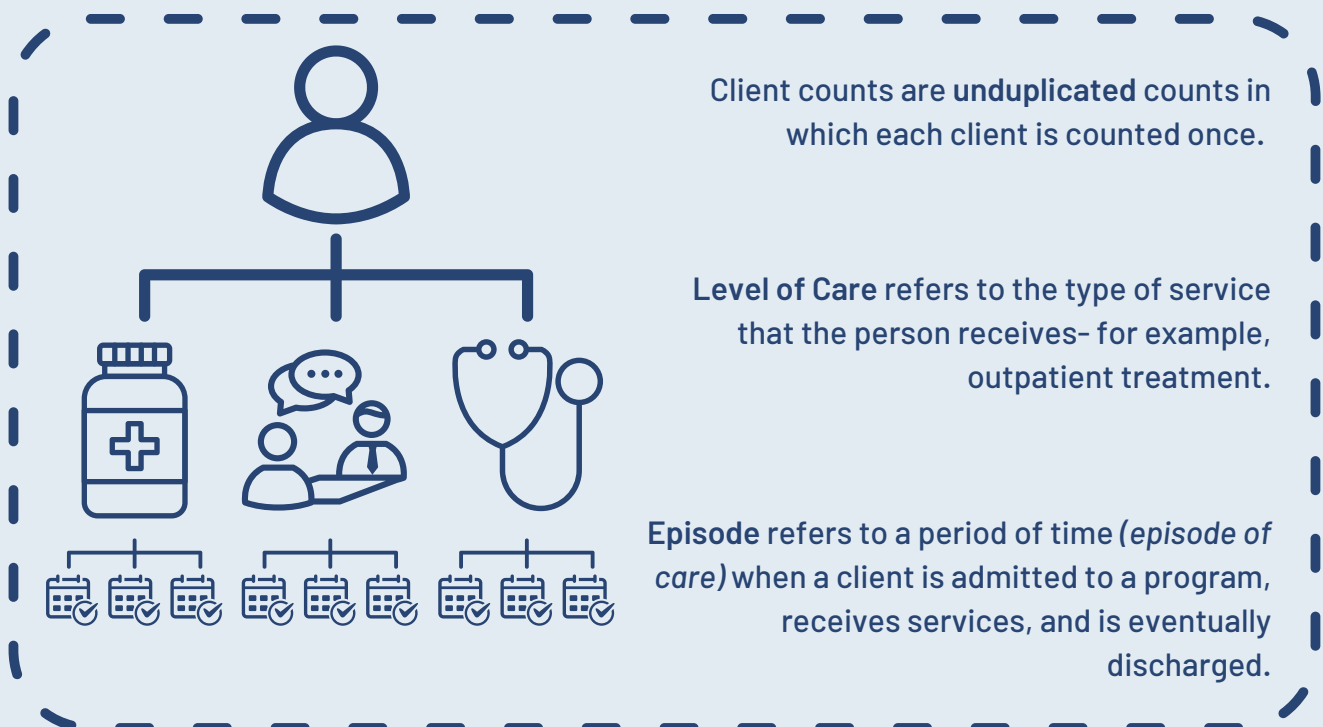
<u>ii</u>	Introduction
<u>1</u>	About the Data in This Report
<u>2</u>	DMHAS SFY22 Annual Statistical Data - Quick Facts
<u>3</u>	SFY22 Episode Counts
<u>4</u>	Number of Clients Served
<u>5</u>	Gender and Age
<u>6</u>	Race and Ethnicity
<u>7</u>	COVID-19 and DMHAS Operations
<u>8</u>	Substance Use Clients by Level of Care
<u>9</u>	Mental Health Clients by Level of Care
<u>10</u>	Bed Utilization
<u>11</u>	Primary Drug of Choice at Admission
<u>12</u>	Diagnosis and SMI Prevalence
<u>13</u>	Substance Use and Co-Occurring Disorder Prevalence
<u>14</u>	DMHAS Clients Served by Town
<u>15</u>	Appendices

About the Data in this Report

The numbers contained in this report are the official DMHAS data for State Fiscal Year 2022 (SFY22).

These data include clients served in DMHAS funded or DMHAS operated programs. The clients and the services are diverse, and the data are complex. This report will, at different times, reflect numbers that refer to different subgroups or events that are based on specific filtering of the data.

For instance, we frequently filter out programs that are not required to report treatment data when we present information from the Level of Care (LOC) perspective. We also distinguish between clients and episodes. This distinction is important.



Each client may have multiple episodes of care that occur within the fiscal year; thus, the client may be counted multiple times – once for each episode, if applicable.

Thus, Admissions and Discharges are reported as episode counts, as many clients have multiple episodes. In addition, a client may be admitted to/enrolled in several programs simultaneously; therefore, each admission will be included in the overall Admission count.

The data contained in this report were taken from DMHAS' Enterprise Data Warehouse (EDW) on October 17, 2022. The data warehouse is a dynamic system, so reports or other analyses performed on different dates may produce slightly different results. Several levels of care (LOCs) are not included in these analyses, including Pre-Admit, Recovery Support and Other.

These LOCs may be included in EDW reports, thus resulting in potential discrepancies when comparing numbers. Finally, we do not include data that has been submitted to the agency from programs that are not funded by DMHAS Human Service Agreements.

DMHAS SFY22 Annual Statistical Data - Quick Facts

Program Type		Unduplicated Client Count	
Mental Health Programs			48,861
Substance Use Programs			42,526
Total Unduplicated Count			95,291

Race	Unduplicated Client Count	%	
White/Caucasian	57,671		61%
Black/African American	15,512		16%
Other	22,108		23%

Ethnicity	Unduplicated Client Count	%	
Latino/Hispanic Ethnicity	19,584		21%

Gender	Unduplicated Client Count	%	
Female	40,053		42%
Male	55,038		58%
Transgender	36		0%
Unknown	164		0%

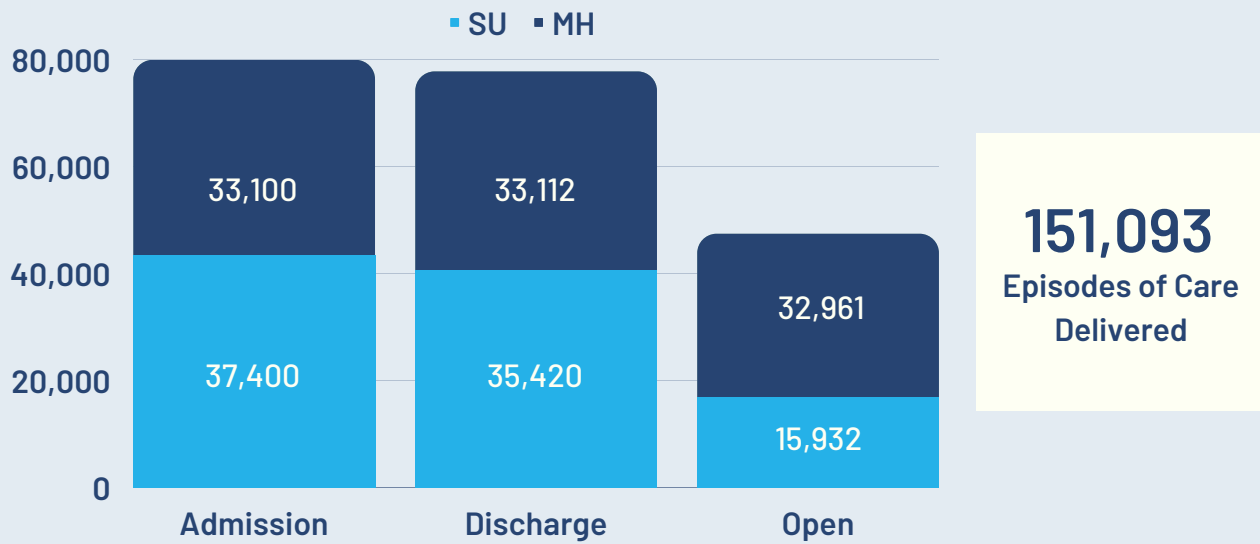
Level of Care	Unduplicated Client Count	
MH Inpatient		926
MH Residential		1,970
MH Outpatient Levels of Care		52,139
SU Inpatient (Withdrawal Management)		767
SU Residential Rehab		8,066
SU Outpatient Levels of Care		44,287

Primary Drug - All SFY22 Active	N	%	
Alcohol	22,853		34%
Heroin/Other Opioids	25,706		38%
Cannabis (Marijuana/Hashish/THC)	8,469		13%

Primary Drug at Admission - All SFY22 Admissions	N	%	
Alcohol	13,172		39%
Heroin/Other Opioids	12,297		36%

Diagnosis Categories	N	%	
Serious Mental Illness (SMI)(includes PTSD)	28,507		45%
SU diagnosis	35,968		56%
Dual Diagnosis (SMI + SU)	15,268		24%

SFY22 Episode Counts



In SFY 2022, DMHAS funded and operated programs made:

- 79,827 admissions
- 77,671 discharges

At year end, there were 47,334 open episodes. These are episodes with admissions before 7/1/21 and no discharges by 6/30/22.

Admissions by Type of Provider

■ DMHAS Funded Providers ■ State Operated Facilities

Substance Use



DMHAS-funded providers made 42,202 admissions to substance use services.

State operated facilities made 1,183 admissions to substance use services.

Mental Health



DMHAS-funded providers made 25,163 admissions to mental health services.

State operated facilities made 11,279 admissions to mental health services.

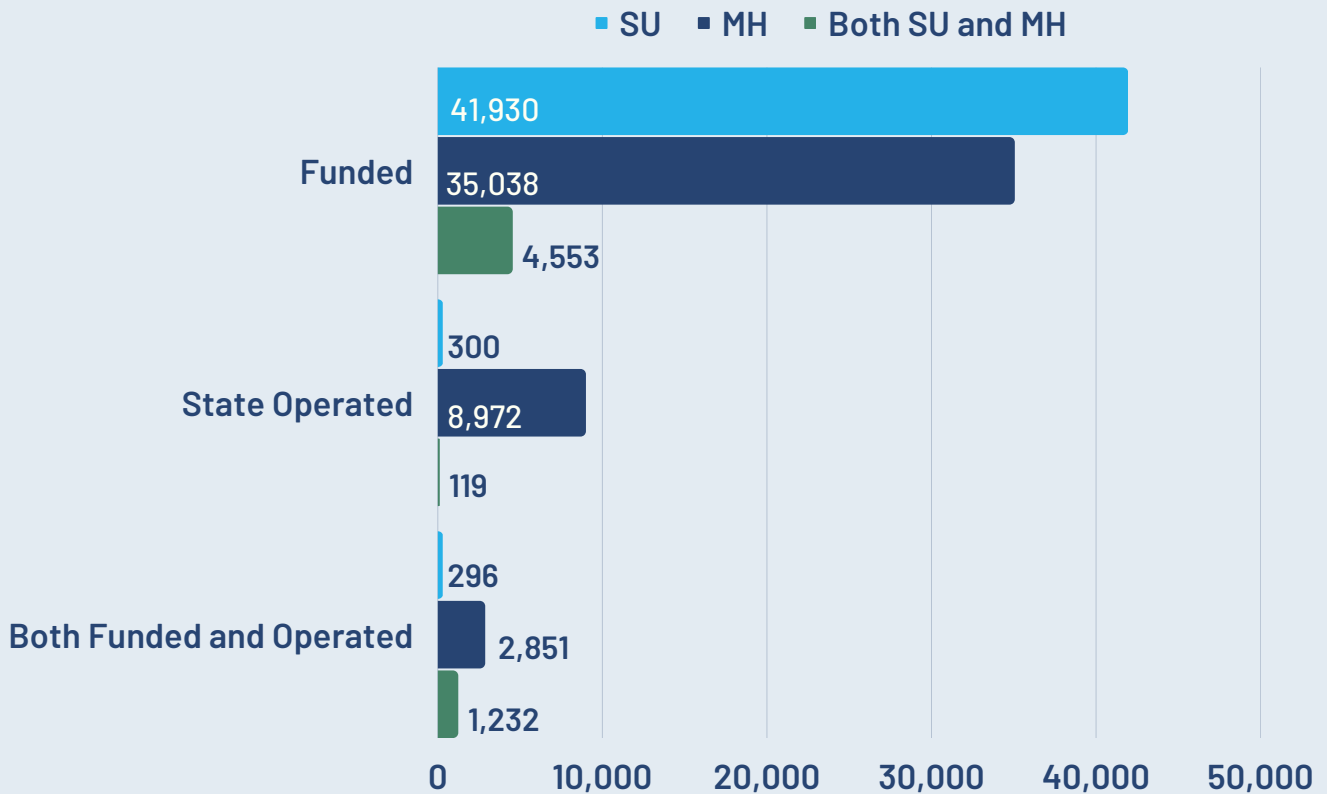
Number of Clients Served

95,291 individuals

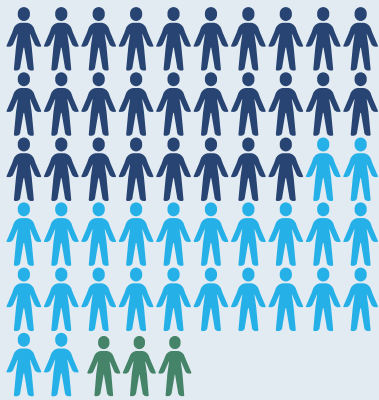


were served in SFY 2022 (July 1, 2021 - June 30, 2022).
This is slightly more than the population of Norwalk.

Most clients were served by DMHAS-funded providers. State operated facilities served about 14% of the total client population, largely providing mental health services.

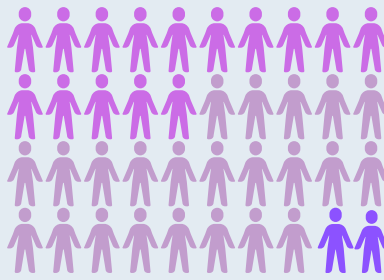


Gender



55,038 male clients

SU	27,794
MH	23,608
Both	3,636



40,053 female clients

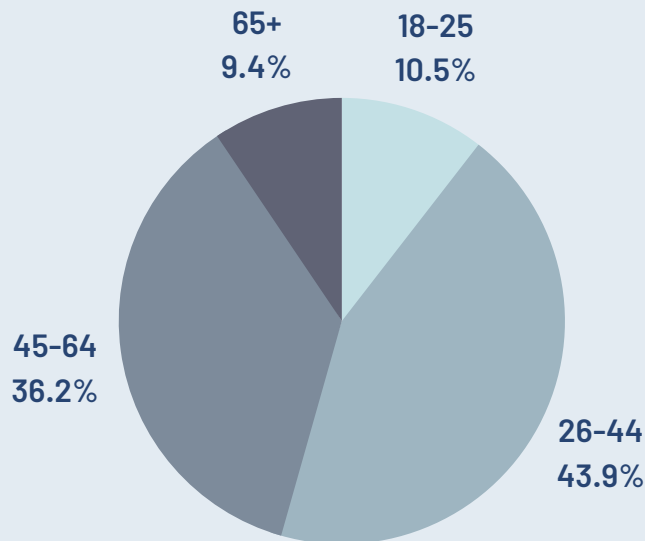
SU	13,457
MH	22,759
Both	2,123



31 transgender clients

There are likely many more. DMHAS is working to collect more accurate demographic data.

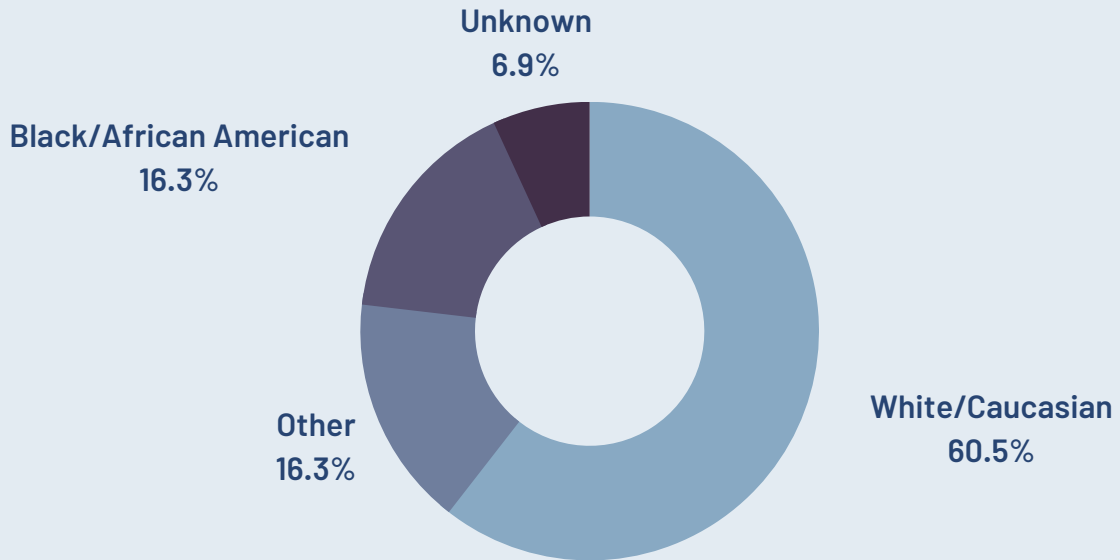
Age



During SFY22, the mean client age was 44.1.

Clients in SU programs tend to be somewhat younger (mean age: 41.7) and in MH programs, they tend to be somewhat older (mean age: 46.3).

Race

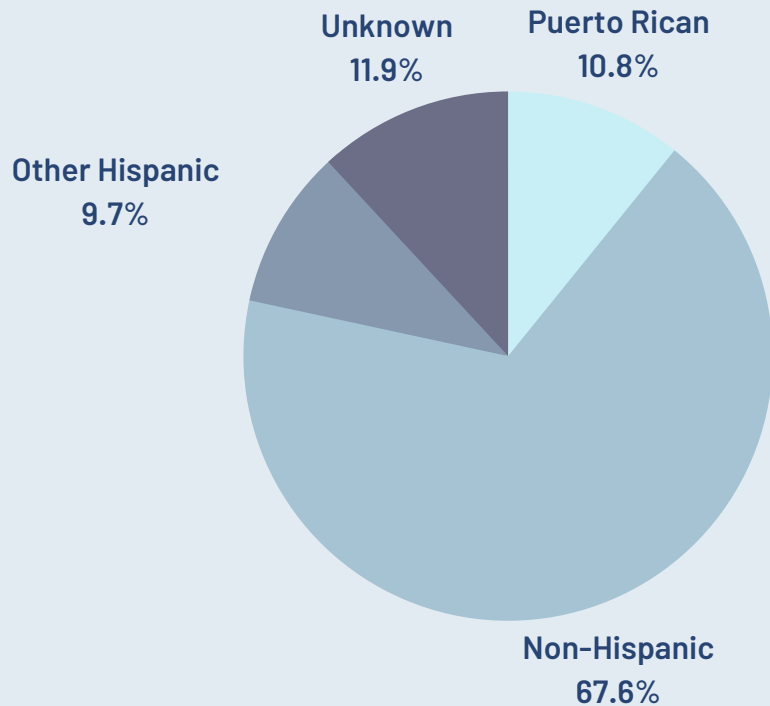


For this report, the "Other" category includes the following DMHAS race categories: Other, American Indian/Native Alaskan, Asian, Native Hawaiian/Other Pacific Islander, and Multi-Race. We find that many (but not all) people who indicate "Other" as their race identify as Hispanic or Latino origin. Detailed statistics may be found in the Appendix.

Ethnicity

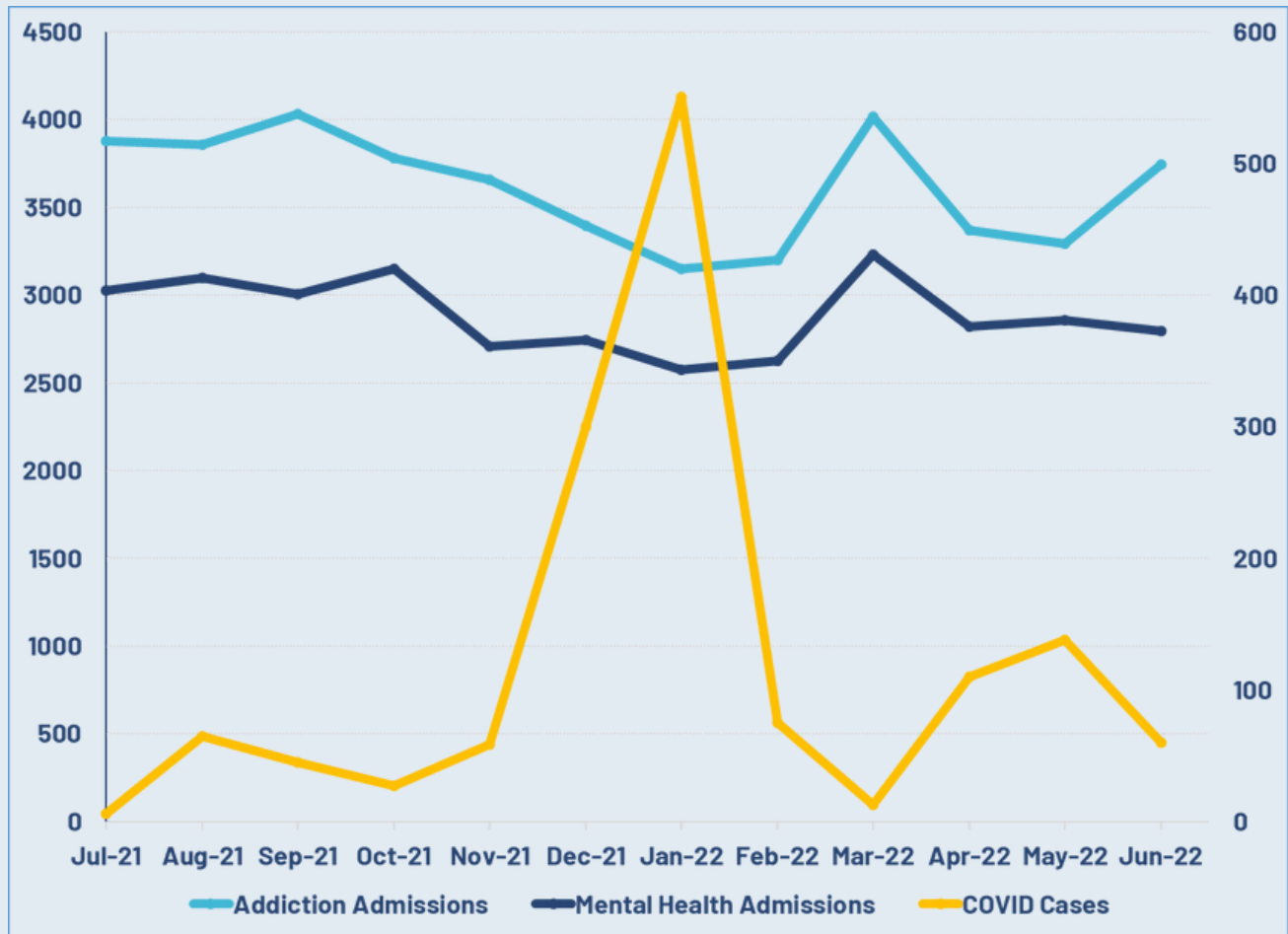
In SFY22, the DMHAS population was 21% Hispanic/Latino origin.

While more than half are Puerto Rican, many have ties to Central and South America, Mexico, and Cuba.



COVID-19 and DMHAS Operations

Admissions vs. COVID Critical Incident Cases, SFY22

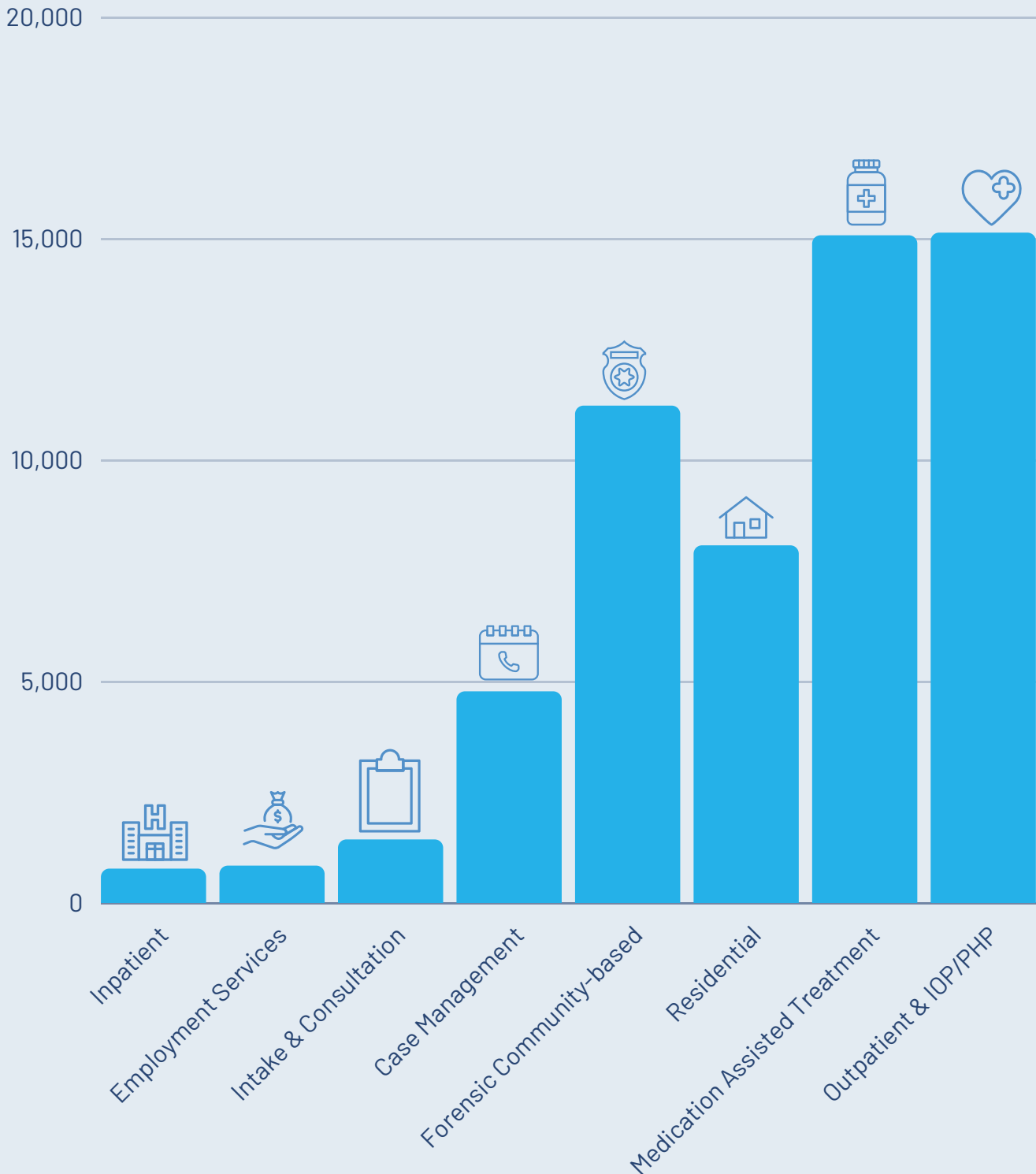


The graph above shows admissions for addiction and mental health levels of care during SFY22. The yellow line charts the COVID-19 case incidence as reported to DMHAS via the agency's critical incident reporting system.

As in SFY21, admissions declined as the summer months moved into winter and COVID-19 cases increased. The Delta variant arrived in the US in June 2021 and was followed by the highly transmissible Omicron variant in November 2021*. Admission rates climbed once more in March 2022 as COVID-19 cases receded.

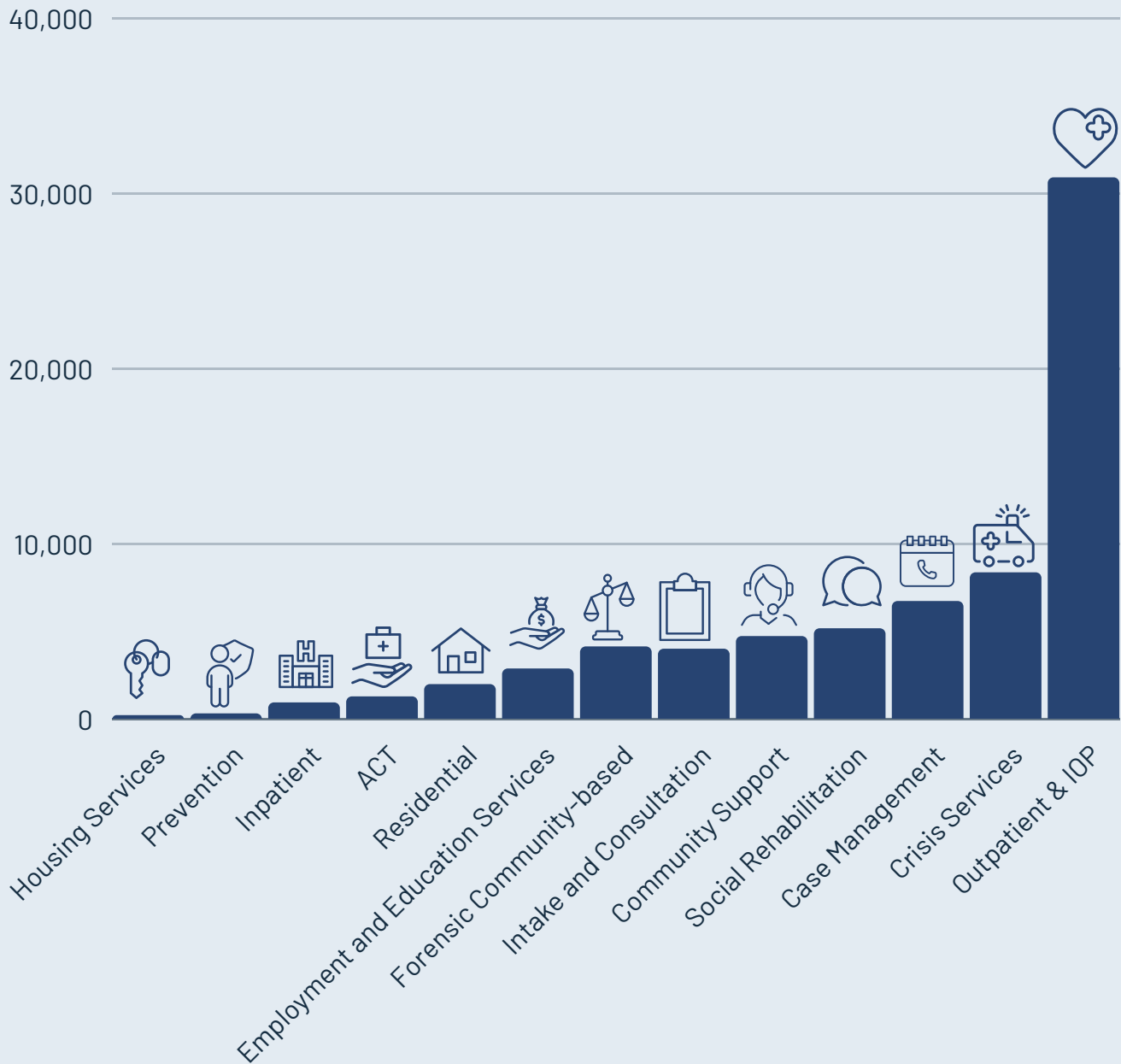
*COVID variant information from Omicron, Delta, Alpha, and More: What To Know About the Coronavirus Variants > News > Yale Medicine, retrieved March 2023.

Substance Use Clients by Level of Care



This chart shows active client counts in addiction levels of care during SFY22. Some categories have been combined to enable easier rendering; additionally, as Case Management is found in both SU and Forensic SU services, the totals have been combined and thus that count is slightly duplicated. Detailed tables with active client, admission, and discharge counts may be found in the appendix.

Mental Health Clients by Level of Care



This chart shows active client counts in mental health levels of care during SFY22. Some categories have been combined to enable easier rendering; additionally, some levels of care that are shared between Mental Health and Forensic MH (namely, Inpatient, Residential, Crisis, Case Management, and Outpatient) have slightly duplicated counts.

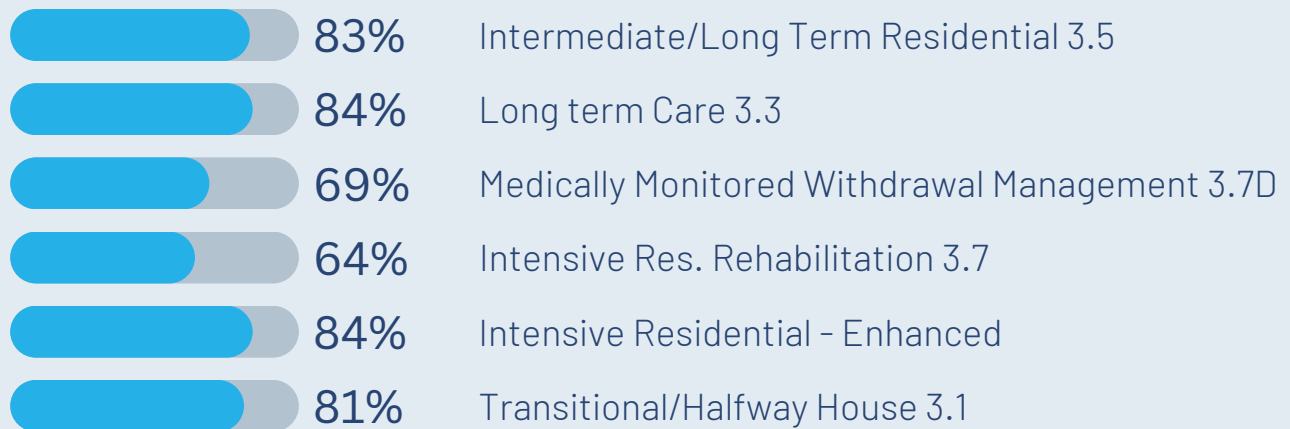
Detailed tables with active client, admission, and discharge counts may be found in the appendix.

Bed Utilization

In this section, we report combined utilization for both DMHAS-funded and DMHAS-operated beds. Please note that the denominator is not always reflective of the actual number of beds available, particularly during the COVID-19 pandemic when inpatient and residential units were "decompressed" to allow for CDC-recommended physical distancing measures.

Additionally, the need to quarantine people has also contributed to lower bed utilization rates in SFY22. For detailed information, please see the appendix of this report.

Substance Use Beds

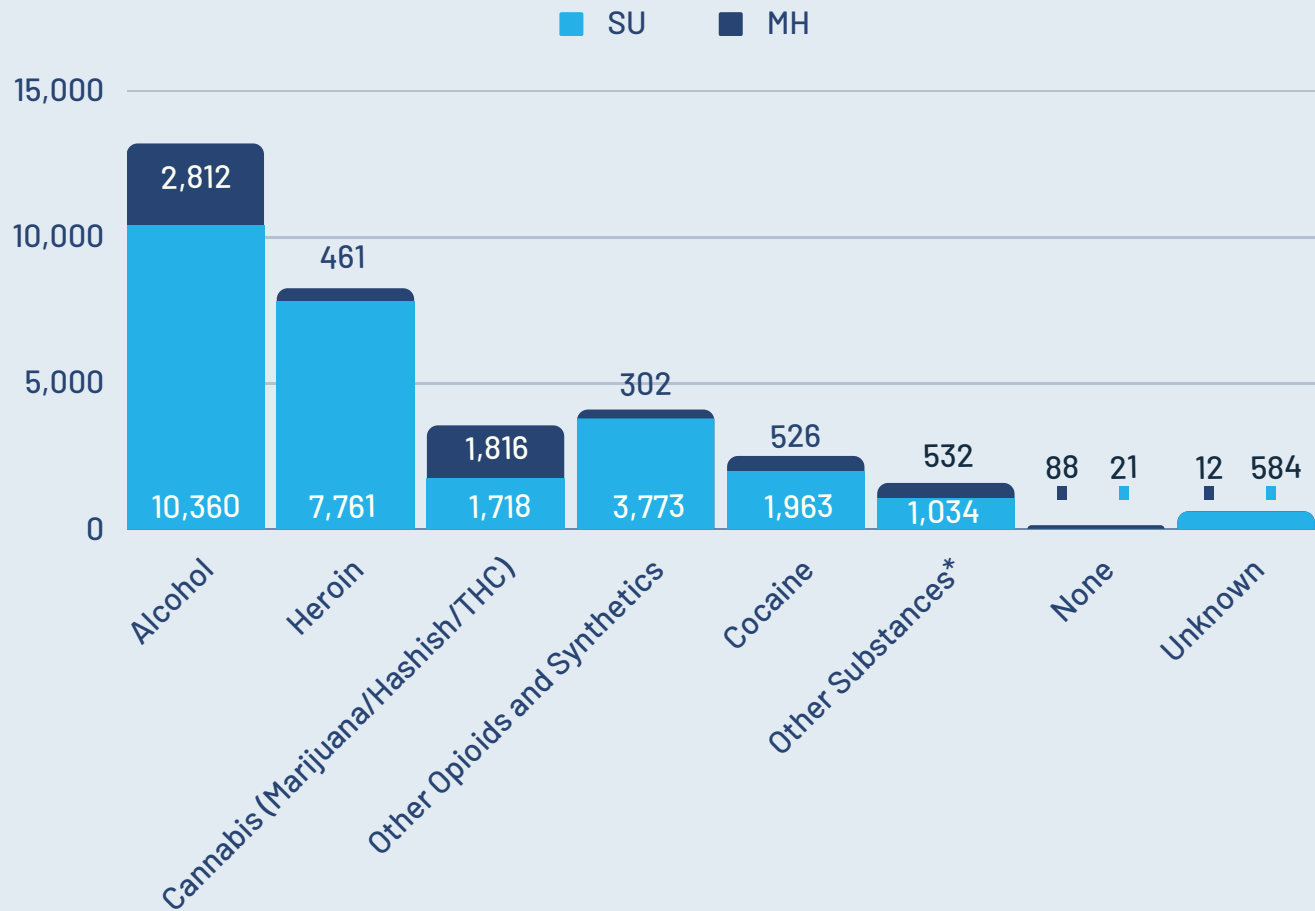


Mental Health Beds



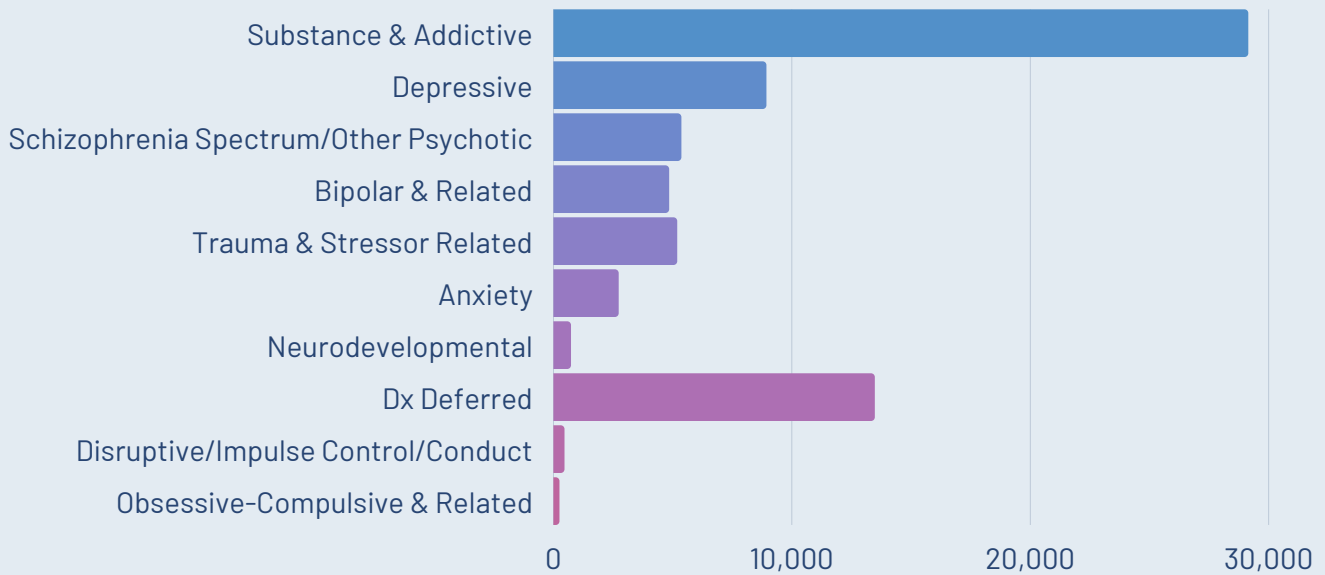
Primary Drug of Use at Admission

Over 33,000 admission records contained information about drug(s) of use; the primary drug frequencies are charted below. Alcohol was the most common primary drug of use in SFY22, as it had been in SFY21.



*This category includes benzodiazepines, PCP, amphetamines, hallucinogens, non-prescription methadone, other sedatives or hypnotics, barbiturates, inhalants, methamphetamines, other stimulants, over the counter, tobacco, and tranquilizers.

Diagnosis



Diagnosis data come from treatment related programs, and reflect the *most recent primary diagnosis* during the *most recent episode of care* that was open during the fiscal year.

"Primary diagnosis" refers to the most concerning problem for which a person seeks help.

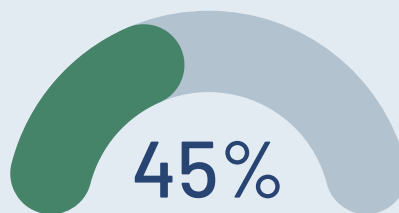
Note that clients may have more than one primary diagnosis, and many people have more than one diagnosis.

These values represent an unduplicated client count within each diagnostic category. The bar chart above represents about 99% of the diagnostic data; a detailed table may be found in the appendix.

Serious Mental Illness (SMI) Prevalence

"Serious Mental Illness" refers to mental, behavioral, or emotional disorders that significantly interfere with one or more major life activities.*

Nearly half of all clients qualify for an SMI diagnosis.



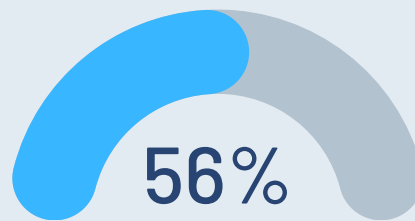
of all DMHAS clients had SMI during SFY22.

*National Institute of Mental Health (NIMH). 2022. Mental Illness. [online] Available at: <https://www.nimh.nih.gov/health/statistics/mental-illness> [Accessed 20 April 2022].

Substance Use and Co-Occurring Disorder Prevalence

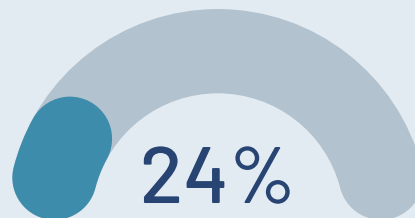
More than half of all clients have a substance use/abuse disorder.

This statistic is based on both primary and non-primary diagnoses from the most recent treatment episode.



of DMHAS clients had a substance use/abuse disorder during SFY22.

"Co-Occurring Disorder" refers to the condition of having co-existing mental illness and substance use disorders.†

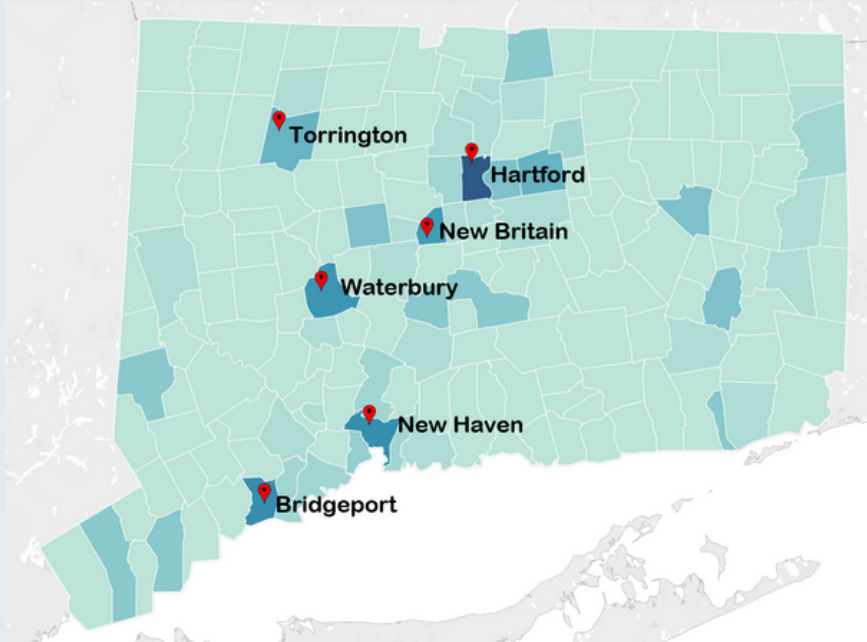


of DMHAS clients had a co-occurring disorder, defined as SMI plus a substance use/abuse diagnosis.

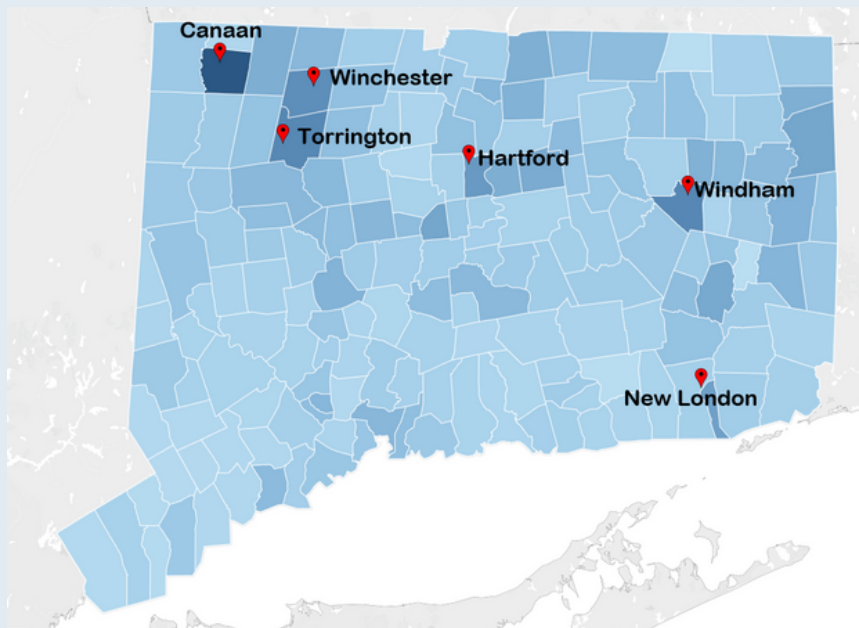
†Substance Abuse and Mental Health Services Administration (SAMHSA). 2022. [online] Available at: <https://www.samhsa.gov/medication-assisted-treatment/medications-counseling-related-conditions/co-occurring-disorders> [Accessed 20 April 2022].

DMHAS Clients Served by Town

Many of the people served by DMHAS live in urban areas and thus it is not surprising that many of the agency's clients come from cities. This map shows the DMHAS population by volume; higher counts are shown in darker shading.



DMHAS penetration rates were calculated as number of clients per 1,000 residents*. When mapped, this reveals a more complex picture. Note that two of the darkest towns - Canaan and Windham - are in rural areas. Clusters of towns appear - particularly in the eastern and western parts of the state where population density is lower.



* Population estimates taken from CT DPH, Annual Town and County Population for Connecticut, accessed April 2023.

Appendices

<u>16</u>	Counts
<u>17</u>	Demographics
<u>20</u>	Counts by Provider Type
<u>22</u>	Counts by Program Type and Level of Care
<u>29</u>	Primary Drug of Choice
<u>35</u>	Primary Diagnosis
<u>36</u>	Client Counts by Town
<u>42</u>	Bed Capacity and Utilization

Counts

Episode counts	SU	MH	Total
Admission	43,385	36,442	79,827
Discharge	40,521	37,150	77,671
Open*	16,772	30,572	47,344
Total	70,573	80,520	151,093

* Open indicates episode that started before or during SFY22, but not yet discharged by 6/30/22

Unduplicated Clients	SU	MH	Both	Total
Admissions	23,801	21,380	3,293	48,474
Discharges	22,365	23,366	3,025	48,756
Open	15,553	23,927	674	40,154
Undup Clients	42,526	46,861	5,904	95,291

Program Type	N
Substance Abuse Programs	48,430
Mental Health Programs	52,765
Total Unduplicated Count	95,291

Program Type	Admissions	Single Admissions	%
SU	27,094	20,009	74%
MH	24,673	18,084	73%

Gender

Gender	N	%
Female	40,053	42%
Male	55,038	58%
Transgender	36	0%

Detailed Gender

Gender	SU		MH		Both		Total	
	N	%	N	%	N	%	N	%
Female	14,676	34.5%	23,112	49.3%	2,265	38.4%	40,053	42.0%
Male	27,794	65.4%	23,608	50.4%	3,636	61.6%	55,038	57.8%
Transgender	-	0.0%	36	0.1%	-	-	36	0.0%
Unknown	56	0.1%	105	0.2%	3	0.1%	164	0.2%
Total	42,526	100.0%	46,861	100.0%	5,904	100.0%	95,291	100.0%

Race and Ethnicity

Race	N	%
White/Caucasian	54,242	61%
Black/African American	14,213	16%
Other	20,588	23%

Detailed Race

Race	SU		MH		Both		Total	
	N	%	N	%	N	%	N	%
American Indian/ Native Alaskan	183	0.4%	255	0.5%	52	0.9%	490	0.5%
Asian	357	0.8%	670	1.4%	23	0.4%	1,050	1.1%
Black/African American	5,798	13.6%	8,534	18.2%	1,180	20.0%	15,512	16.3%
Native Hawaiian/ Other Pacific Islander	75	0.2%	151	0.3%	12	0.2%	238	0.2%
White/Caucasian	26,622	62.6%	27,592	58.9%	3,457	58.6%	57,671	60.5%
Multi-race	188	0.4%	283	0.6%	40	0.7%	511	0.5%
Missing/unknown	2,806	6.6%	3,495	7.5%	244	4.1%	6,545	6.9%
Other	6,497	15.3%	5,881	12.5%	896	15.2%	13,274	13.9%
Total	42,526	100.0%	46,861	100.0%	5,904	100.0%	95,291	100.0%

Ethnicity	N	%
Latino/Hispanic Identity	19,584	21%

Detailed Ethnicity

Ethnicity	SU		MH		Both		Total	
	N	%	N	%	N	%	N	%
Hispanic-Cuban	69	0.2%	58	0.1%	12	0.2%	139	0.1%
Hispanic-Mexican	336	0.8%	249	0.5%	29	0.5%	614	0.6%
Hispanic-Other	3,887	9.1%	4,137	8.8%	494	8.4%	8,518	8.9%
Hispanic-Puerto Rican	5,312	12.5%	4,272	9.1%	729	12.3%	10,313	10.8%
Non-Hispanic	26,474	62.3%	33,688	71.9%	4,215	71.4%	64,377	67.6%
Unknown	6,448	15.2%	4,457	9.5%	425	7.2%	11,330	11.9%
Total	42,526	100.0%	46,861	100.0%	5,904	100.0%	95,291	100.0%

Age	SU		MH		Both		Total	
	N	%	N	%	N	%	N	%
18-25	3,985	9.4%	5,586	11.9%	354	6.0%	9,925	10.4%
26-34	10,677	25.1%	8,009	17.1%	1,284	21.7%	19,970	21.0%
35-44	11,559	27.2%	8,314	17.7%	1,662	28.2%	21,535	22.6%
45-54	7,659	18.0%	7,811	16.7%	1,239	21.0%	16,709	17.5%
55-64	6,236	14.7%	10,137	21.6%	1,113	18.9%	17,486	18.4%
65+	2,139	5.0%	6,545	14.0%	252	4.3%	8,936	9.4%
Unknown	271	0.6%	459	1.0%	-	0.0%	730	0.8%
Total	42,526	100.0%	46,861	100.0%	5,904	100.0%	95,291	100.0%

Age Mean

Program Type	Mean (years)	N*	Std. Deviation
SU	41.7	42,255	13.1
MH	46.3	46,402	16.3
Both	43.4	5,904	12.3
Total	44.1	94,561	14.9

* N is slightly lower than unduplicated client counts due to missing DOB data.

Episode Counts by Provider Type (DMHAS-Funded vs. DMHAS-Operated)

Admissions

Funding source	SU	MH	Total
DMHAS-Funded	42,202	25,163	67,365
DMHAS-Operated	1,183	11,279	12,462
Total	43,385	36,442	79,827

Discharges

Funding source	SU	MH	Total
DMHAS-Funded	39,334	25,729	65,063
DMHAS-Operated	1,187	11,421	12,608
Total	40,521	37,150	77,671

Open

Funding source	SU	MH	Total
DMHAS-Funded	16,716	23,797	40,513
DMHAS-Operated	56	6,775	6,831
Total	16,772	30,572	47,344

Unduplicated Client Counts

Admitted during SFY22

Funding source	SU	MH	Both	Total
DMHAS-Funded	23,261	15,033	2,471	40,765
DMHAS-Operated	265	5,482	111	5,858
Both	275	865	711	1,851
Total	23,801	21,380	3,293	48,474

Discharged during SFY22

Funding source	SU	MH	Both	Total
DMHAS-Funded	21,783	16,416	2,217	40,416
DMHAS-Operated	316	6,025	85	6,426
Both	266	925	723	1,914
Total	22,365	23,366	3,025	48,756

Open/Active during SFY22

Funding source	SU	MH	Both	Total
DMHAS-Funded	15,507	18,496	582	34,585
DMHAS-Operated	46	4,334	5	4,385
Both	-	1,097	87	1,184
Total	15,553	23,927	674	40,154

Total Unduplicated Clients

Funding source	SU	MH	Both	Total
DMHAS-Funded	41,930	35,038	4,553	81,521
DMHAS-Operated	300	8,972	119	9,391
Both	296	2,851	1,232	4,379
Total	42,526	46,861	5,904	95,291

Mental Health Inpatient and Residential Counts

Active Clients

Forensic MH

Active Clients	Total
Inpatient Services	380
Residential Services	31

Mental Health

Active Clients	Total
Inpatient Services	546
Residential Services	1,939

Total MH* Inpatient & Residential Active Clients **2,709**

Admissions

Forensic MH

Admissions	Total
Inpatient Services	184
Residential Services	23

Mental Health

Admissions	Total
Inpatient Services	273
Residential Services	660

Total MH* Inpatient & Residential Admissions **1,140**

Discharges

Forensic MH

Discharges	Total
Inpatient Services	186
Residential Services	23

Mental Health

Discharges	Total
Inpatient Services	255
Residential Services	659

Total MH* Inpatient & Residential Discharges **1,123**

* Total MH represents an unduplicated client count and since a client may be counted in multiple categories, it is not the sum of the subcategories.

Substance Use Inpatient and Residential Counts

Active Clients

Substance Use

Active Clients		Total
Inpatient Services		767
Residential Services		8,066

Total Substance Use* Inpatient & Residential Active Clients **8,526**

Admissions

Substance Use

Admissions		Total
Inpatient Services		1,032
Residential Services		13,910

Total Substance Use* Inpatient & Residential Admissions **14,942**

Discharges

Substance Use

Discharges		Total
Inpatient Services		1,032
Residential Services		13,644

Total Substance Use* Inpatient & Residential Discharges **14,676**

* Total Substance Use represents an unduplicated client count and since a client may be counted in multiple categories, it is not the sum of the subcategories.

Mental Health Outpatient Levels of Care Counts

Active Clients

Forensic MH

Active Clients	Total
Case Management	33
Crisis Services	40
Forensics Community-based	4,121
Outpatient	434

Mental Health

Active Clients	Total
ACT	1,270
Case Management	6,679
Community Support	4,712
Consultation	596
Crisis Services	8,308
Education Support	246
Employment Services	2,862
Housing Services	200
Intake	3,394
IOP	130
Outpatient	30,393
Prevention	300
Social Rehabilitation	5,156

Total MH* Outpatient Levels of Care Active Clients **52,139**

* Total MH represents an unduplicated client count and since a client may be counted in multiple categories, it is not the sum of the subcategories.

Mental Health Outpatient Levels of Care Counts

Admissions

Forensic MH

Active Clients	Total
Case Management	20
Crisis Services	32
Forensics Community-based	3,078
Outpatient	205

Mental Health

Active Clients	Total
ACT	343
Case Management	2,791
Community Support	1,080
Consultation	181
Crisis Services	11,736
Education Support	105
Employment Services	1,239
Housing Services	67
Intake	3,537
IOP	112
Outpatient	9,511
Social Rehabilitation	1,265

Total MH* Outpatient Levels of Care Admissions **35,302**

* Total MH represents an unduplicated client count and since a client may be counted in multiple categories, it is not the sum of the subcategories

Mental Health Outpatient Levels of Care Counts

Discharges

Forensic MH

Active Clients	Total
Case Management	13
Crisis Services	35
Forensics Community-based	3,091
Outpatient	237

Mental Health

Active Clients	Total
ACT	379
Case Management	2,667
Community Support	1,383
Consultation	347
Crisis Services	11,602
Education Support	119
Employment Services	1,583
Housing Services	67
Intake	3,438
IOP	114
Outpatient	9,707
Prevention	23
Social Rehabilitation	1,222

Total MH* Outpatient Levels of Care Discharges **36,027**

* Total MH represents an unduplicated client count and since a client may be counted in multiple categories, it is not the sum of the subcategories

Substance Use Outpatient Levels of Care Counts

Active Clients

Forensic SU

Active Clients	Total
Case Management	246
Forensics Community-based	11,220

Substance Use

Active Clients	Total
Case Management	4,524
Consultation	12
Employment Services	835
Intake	1,414
IOP	413
Medication Assisted Treatment	15,066
Outpatient	15,126
PHP	79

Total Substance Use* Outpatient Levels of Care Active Clients **44,287**

* Total Substance Use represents an unduplicated client count and since a client may be counted in multiple categories, it is not the sum of the subcategories

Substance Use Outpatient Levels of Care Counts

Admissions

Forensic SU

Active Clients	Total
Case Management	246
Forensics Community-based	7,304

Substance Use

Active Clients	Total
Case Management	4,524
Consultation	12
Employment Services	835
Intake	1,414
IOP	413
Medication Assisted Treatment	15,066
Outpatient	15,126
PHP	79

Total Substance Use* Outpatient Levels of Care Admissions **44,287**

Discharges

Forensic SU

Active Clients	Total
Case Management	217
Forensics Community-based	5,845

Substance Use

Active Clients	Total
Case Management	2,577
Consultation	8
Employment Services	567
Intake	1,898
IOP	364
Medication Assisted Treatment	6,874
Outpatient	7,421
PHP	74

Total Substance Use Outpatient Levels of Care Discharges **25,845**

* Total Substance Use represents an unduplicated client count and since a client may be counted in multiple categories, it is not the sum of the subcategories.

Primary Drug - Active Clients - Substance Use

For this table, we narrowed our analytic universe to episodes of clients who were active in addiction treatment programs during SFY22. The drug information was taken from the most recent record update within the episode.

Primary Drug	# Episodes	%
Alcohol	13,327	28.8%
Amphetamines	87	0.2%
Barbiturates	4	0.0%
Benzodiazepines	438	0.9%
Cocaine/Crack	2,857	6.2%
Hallucinogens: LSD, DMS, STP, etc	168	0.4%
Heroin	17,805	38.5%
Inhalants	24	0.1%
Cannabis (Marijuana, Hashish, THC)	3,325	7.2%
Methamphetamines	72	0.2%
Non-Prescriptive Methadone	65	0.1%
None	467	1.0%
Other	122	0.3%
Other Opioids and Synthetics	5,975	12.9%
Other Sedatives or Hypnotics	54	0.1%
Other Stimulants	31	0.1%
Over-the-Counter	8	0.0%
PCP	357	0.8%
Tobacco	88	0.2%
Tranquilizers	1	0.0%
Unknown	926	2.0%
Total	46,201	100.0%

Primary Drug - Active Clients - Mental Health

For this table, we narrowed our analytic universe to episodes of clients who were active in mental health treatment programs during SFY22. The drug information was taken from the most recent record update within the episode.

Primary Drug	# Episodes	%
Alcohol	9,526	45.4%
Amphetamines	69	0.3%
Barbiturates	22	0.1%
Benzodiazepines	121	0.6%
Cocaine/Crack	1,745	3.8%
Hallucinogens: LSD, DMS, STP, etc	71	0.3%
Heroin	1,216	5.8%
Inhalants	20	0.1%
Cannabis (Marijuana, Hashish, THC)	5,144	24.5%
Methamphetamines	54	0.3%
Non-Prescriptive Methadone	10	0.0%
None	444	2.2%
Other	147	0.7%
Other Opioids and Synthetics	710	3.4%
Other Sedatives or Hypnotics	27	0.1%
Other Stimulants	70	0.3%
Over-the-Counter	82	0.4%
PCP	152	0.7%
Tobacco	842	4.0%
Tranquilizers	9	0.0%
Unknown	502	2.4%
Total	20,982	100.0%

Primary Drug - Active Clients - Total (All Program Types)

For this table, we narrowed our analytic universe to episodes of clients who were active in treatment programs (addiction or mental health) during SFY22. The drug information was taken from the most recent record update within the episode.

Primary Drug	# Episodes	%
Alcohol	22,853	34.0%
Amphetamines	156	0.2%
Barbiturates	26	0.0%
Benzodiazepines	559	0.8%
Cocaine/Crack	4,602	6.8%
Hallucinogens: LSD, DMS, STP, etc	239	0.4%
Heroin	19,021	28.3%
Inhalants	44	0.1%
Cannabis (Marijuana, Hashish, THC)	8,469	12.6%
Methamphetamines	126	0.2%
Non-Prescriptive Methadone	75	0.1%
None	910	1.3%
Other	269	0.4%
Other Opioids and Synthetics	6,685	10.0%
Other Sedatives or Hypnotics	81	0.1%
Other Stimulants	101	0.2%
Over-the-Counter	90	0.1%
PCP	509	0.8%
Tobacco	930	1.4%
Tranquilizers	10	0.0%
Unknown	1,428	2.1%
Total	67,183	100.0%

Primary Drug - Admissions - Substance Use

For this table, we narrowed our analytic universe to episodes of clients who were admitted to substance use treatment programs during SFY22. The drug information was taken from the admission assessment.

Primary Drug	# Admissions	%
Alcohol	10,360	38.1%
Amphetamines	47	0.2%
Barbiturates	1	0.0%
Benzodiazepines	359	1.3%
Cocaine/Crack	1,963	7.2%
Hallucinogens: LSD, DMS, STP, etc	76	0.3%
Heroin	7,761	28.5%
Inhalants	7	0.0%
Cannabis (Marijuana, Hashish, THC)	1,718	6.3%
Methamphetamines	55	0.2%
Non-Prescriptive Methadone	16	0.1%
None	21	0.1%
Other	95	0.3%
Other Opioids and Synthetics	3,773	13.9%
Other Sedatives or Hypnotics	33	0.1%
Other Stimulants	22	0.1%
Over-the-Counter	6	0.0%
PCP	244	0.9%
Tobacco	72	0.3%
Tranquilizers	1	0.0%
Unknown	584	2.1%
Total	27,214	100.0%

Primary Drug - Admissions - Mental Health

For this table, we narrowed our analytic universe to episodes of clients who were admitted to mental health treatment programs during SFY22. The drug information was taken from the admission assessment.

Primary Drug	# Admissions	%
Alcohol	2,812	42.9%
Amphetamines	11	0.2%
Barbiturates	4	0.1%
Benzodiazepines	27	0.4%
Cocaine/Crack	526	8.0%
Hallucinogens: LSD, DMS, STP, etc	26	0.4%
Heroin	461	7.0%
Inhalants	5	0.1%
Cannabis (Marijuana, Hashish, THC)	1,816	27.7%
Methamphetamines	24	0.4%
Non-Prescriptive Methadone	3	0.0%
None	88	1.3%
Other	29	0.4%
Other Opioids and Synthetics	302	4.6%
Other Sedatives or Hypnotics	3	0.0%
Other Stimulants	13	0.2%
Over-the-Counter	12	0.2%
PCP	63	1.0%
Tobacco	311	4.7%
Tranquilizers	1	0.0%
Unknown	12	0.2%
Total	6,549	100.0%

Primary Drug - Admissions - Total (All Program Types)

For this table, we narrowed our analytic universe to episodes of clients who were admitted to treatment programs (addiction or mental health) during SFY22. The drug information was taken from the admission assessment.

Primary Drug	# Admissions	%
Alcohol	13,172	39.0%
Amphetamines	58	0.2%
Barbiturates	5	0.0%
Benzodiazepines	386	1.1%
Cocaine/Crack	2,489	7.4%
Hallucinogens: LSD, DMS, STP, etc	102	0.3%
Heroin	8,222	24.4%
Inhalants	12	0.0%
Cannabis (Marijuana, Hashish, THC)	3,534	10.5%
Methamphetamines	79	0.2%
Non-Prescriptive Methadone	19	0.1%
None	109	0.3%
Other	124	0.4%
Other Opioids and Synthetics	4,075	12.1%
Other Sedatives or Hypnotics	36	0.1%
Other Stimulants	35	0.1%
Over-the-Counter	18	0.1%
PCP	307	0.9%
Tobacco	383	1.1%
Tranquilizers	2	0.0%
Unknown	596	1.8%
Total	33,763	100.0%

Primary Diagnosis for Clients in Treatment Related Programs

For this table, we tabulated primary diagnosis for clients who were active in treatment programs (addiction or mental health) during SFY22. These counts are on the individual client level.

Rank	Diagnosis	Frequency	%
1	Substance-Related and Addictive Disorders	29,127	40.2%
2	Diagnosis Deferred On This Axis	13,463	18.6%
3	Depressive Disorders	8,917	12.3%
4	Schizophrenia Spectrum and Other Psychotic Disorders	5,351	7.4%
5	Trauma- and Stressor-Related Disorders	5,176	7.2%
6	Bipolar and Related Disorders	4,838	6.7%
7	Anxiety Disorders	2,721	3.8%
8	Neurodevelopmental Disorders	721	1.0%
9	Other Conditions That May Be a Focus of Clinical Attention	574	0.8%
10	Disruptive, Impulse-Control, and Conduct Disorders	448	0.6%
11	Other Mental Disorders	329	0.5%
12	Obsessive-Compulsive and Related Disorders	237	0.3%
13	Personality Disorders	164	0.2%
14	Neurocognitive Disorders	135	0.2%
15	Somatic Symptom and Related Disorders	70	0.1%
16	Feeding and Eating Disorders	37	0.1%
17	Dissociative Disorders	19	0.0%
18	Paraphilic Disorders	18	0.0%
19	Gender Dysphoria	17	0.0%
20	Sleep-Wake Disorders	15	0.0%
21	Sexual Dysfunctions	3	0.0%
22	Medication-Induced Movement Disorders and Other Adverse Effects of Medication	1	0.0%
	Total	72,381	100%

Client Counts by Town: Andover - Columbia

Town of Client's Domicile	MH Only	SU Only	MH & SU	Total
Andover	35	25	6	66
Ansonia	225	445	31	701
Ashford	56	58	4	118
Avon	80	34	1	115
Barkhamsted	42	56	7	105
Beacon Falls	53	32	4	89
Berlin	219	91	11	321
Bethany	23	25	2	50
Bethel	166	73	13	252
Bethlehem	27	37	3	67
Bloomfield	226	350	32	608
Bolton	39	68	7	114
Bozrah	30	44	2	76
Branford	171	363	46	580
Bridgeport	2535	2112	314	4961
Bridgewater	14	6	0	20
Bristol	1697	494	108	2299
Brookfield	120	61	5	186
Brooklyn	120	159	20	299
Burlington	114	38	7	159
Canaan	75	69	1	145
Canterbury	68	45	4	117
Canton	77	58	2	137
Chaplin	53	32	7	92
Cheshire	120	104	12	236
Chester	22	24	1	47
Clinton	91	96	9	196
Colchester	145	117	11	273
Colebrook	20	27	2	49
Columbia	47	38	7	92

Client Counts by Town: Cornwall - Guilford

Town of Client's Domicile	MH Only	SU Only	MH & SU	Total
Cornwall	12	19	0	31
Coventry	152	158	15	325
Cromwell	132	99	7	238
Danbury	1008	665	73	1746
Darien	45	35	2	82
Deep River	38	37	3	78
Derby	143	203	26	372
Durham	16	32	5	53
East Granby	34	65	7	106
East Haddam	53	36	6	95
East Hampton	110	93	9	212
East Hartford	745	1405	149	2299
East Haven	325	453	56	834
East Lyme	125	64	20	209
East Windsor	127	302	42	471
Eastford	10	11	2	23
Easton	24	17	1	42
Ellington	101	138	17	256
Enfield	446	1210	210	1866
Essex	29	49	2	80
Fairfield	240	144	12	396
Farmington	235	69	8	312
Franklin	14	16	2	32
Glastonbury	165	228	26	419
Goshen	23	57	5	85
Granby	58	95	16	169
Greenwich	154	155	9	318
Griswold	213	210	20	443
Groton	287	328	30	645
Guilford	71	146	17	234

Client Counts by Town: Haddam - New Canaan

Town of Client's Domicile	MH Only	SU Only	MH & SU	Total
Haddam	46	31	11	88
Hamden	309	656	52	1017
Hampton	29	29	5	63
Hartford	4272	2960	723	7955
Hartland	13	16	1	30
Harwinton	82	111	4	197
Hebron	79	65	7	151
Kent	24	35	2	61
Killingly	424	493	52	969
Killingworth	22	24	3	49
Lebanon	81	56	16	153
Ledyard	102	91	8	201
Lisbon	0	0	0	0
Litchfield	75	211	11	297
Lyme	1	1	0	2
Madison	57	88	8	153
Manchester	654	2090	162	2906
Mansfield	155	166	22	343
Marlborough	42	41	9	92
Meriden	731	1062	121	1914
Middlebury	37	40	3	80
Middlefield	29	22	1	52
Middletown	608	923	134	1665
Milford	381	731	68	1180
Monroe	123	27	2	152
Montville	266	217	14	497
Morris	21	47	2	70
Naugatuck	375	313	39	727
New Britain	2270	1459	290	4019
New Canaan	40	39	1	80

Client Counts by Town: New Fairfield - Roxbury

Town of Client's Domicile	MH Only	SU Only	MH & SU	Total
New Fairfield	96	33	2	131
New Hartford	78	111	9	198
New Haven	1509	2985	507	5001
New London	820	703	117	1640
New Milford	385	302	23	710
Newington	388	203	45	636
Newtown	201	86	9	296
Norfolk	26	43	3	72
North Branford	60	96	13	169
North Canaan	10	11	0	21
North Haven	82	213	26	321
North Stonington	31	21	1	53
Norwalk	741	1066	65	1872
Norwich	804	1098	139	2041
Old Lyme	50	22	5	77
Old Saybrook	62	46	5	113
Orange	46	81	9	136
Oxford	77	68	4	149
Plainfield	307	283	31	621
Plainville	414	122	26	562
Plymouth	246	92	15	353
Pomfret	28	46	4	78
Portland	81	89	13	183
Preston	48	34	4	86
Prospect	51	31	5	87
Putnam	186	196	27	409
Redding	32	15	2	49
Ridgefield	84	42	5	131
Rocky Hill	174	116	18	308
Roxbury	12	9	2	23

Client Counts by Town: Salem - Waterbury

Town of Client's Domicile	MH Only	SU Only	MH & SU	Total
Salem	21	30	0	51
Salisbury	36	44	5	85
Scotland	10	3	2	15
Seymour	166	195	13	374
Sharon	22	25	3	50
Shelton	289	263	27	579
Sherman	18	15	1	34
Simsbury	112	111	15	238
Somers	179	142	23	344
South Windsor	140	220	15	375
Southbury	105	87	7	199
Southington	484	165	28	677
Sprague	42	35	2	79
Stafford	153	195	29	377
Stamford	744	851	69	1664
Sterling	57	29	5	91
Stonington	107	140	8	255
Stratford	550	226	34	810
Suffield	79	158	14	251
Thomaston	100	142	9	251
Thompson	86	112	13	211
Tolland	81	103	17	201
Torrington	822	1940	145	2907
Trumbull	150	83	10	243
Vernon	295	650	62	1007
Voluntown	33	22	0	55
Wallingford	257	252	24	533
Warren	12	18	0	30
Washington	23	39	4	66
Waterbury	2019	2383	251	4653

Client Counts by Town: Waterford - Woodstock

Town of Client's Domicile	MH Only	SU Only	MH & SU	Total
Waterford	150	119	10	279
Watertown	164	207	22	393
West Hartford	434	400	45	879
West Haven	457	766	97	1320
Westbrook	57	39	2	98
Weston	22	20	1	43
Westport	64	98	11	173
Wethersfield	240	151	24	415
Willington	55	78	8	141
Wilton	35	29	0	64
Winchester	275	472	34	781
Windham	1106	744	172	2022
Windsor	247	496	37	780
Windsor Locks	140	289	49	478
Wolcott	182	92	11	285
Woodbridge	23	24	4	51
Woodbury	65	59	3	127
Woodstock	43	73	5	121
Unknown	1253	2000	153	3406
Total	42526	46861	5904	95291

Bed Capacity and Utilization

SU Inpatient	Bed Capacity	State Avg. Utilization
Medically Managed Withdrawal Management 4.2	41	18%

SU Residential	Bed Capacity	State Avg. Utilization
Intermediate/Long Term Res.Tx 3.5	500	83%
Long Term Care 3.3	50	84%
Medically Monitored Withdrawal Management 3.7D	139	69%
SU Intensive Res. Rehabilitation 3.7	259	64%
SU Intensive Residential - Enhanced	56	84%
Transitional/Halfway House 3.1	75	81%

MH Inpatient	Bed Capacity	State Avg. Utilization
Acute Psychiatric	328	88%
Acute Psychiatric - Intermediate	11	94%
Non-Certified Subacute	16	95%
Forensic MH Acute Psychiatric	232	87%

MH Residential	Bed Capacity	State Avg. Utilization
Group Home	189	93%
Intensive Residential	200	96%
Supervised Apartments	661	88%
Transitional	36	78%

Bed Capacity and Utilization by Region - Substance Use

Inpatient

Medically Managed Withdrawal Management 4.2

	Region 1	Region 2	Region 3	Region 4	Region 5	State
Bed Capacity		41				41
Utilization Rate		18%				18%

Residential

AIDS Residential

	Region 1	Region 2	Region 3	Region 4	Region 5	State
Bed Capacity	15	10		9		34
Utilization Rate	92%	68%		89%		84%

Intermediate/Long Term Res.Tx 3.5

	Region 1	Region 2	Region 3	Region 4	Region 5	State
Bed Capacity	63	142	137	35	123	500
Utilization Rate	88%	86%	79%	87%	80%	83%

Long Term Care 3.3

	Region 1	Region 2	Region 3	Region 4	Region 5	State
Bed Capacity					50	50
Utilization Rate					84%	84%

Medically Monitored Withdrawal Management 3.7D

	Region 1	Region 2	Region 3	Region 4	Region 5	State
Bed Capacity	27	43	20	35	14	139
Utilization Rate	4%	63%	65%	77%	83%	69%

Recovery House

	Region 1	Region 2	Region 3	Region 4	Region 5	State
Bed Capacity	21	37	10	44	69	181
Utilization Rate	75%	72%	53%	59%	74%	69%

SU Intensive Res. Rehabilitation 3.7

	Region 1	Region 2	Region 3	Region 4	Region 5	State
Bed Capacity	25	145		49	40	259
Utilization Rate	96%	46%		93%	89%	64%

SU Intensive Residential - Enhanced

	Region 1	Region 2	Region 3	Region 4	Region 5	State
Bed Capacity	20		16		20	56
Utilization Rate	101%		71%		77%	84%

Shelter

	Region 1	Region 2	Region 3	Region 4	Region 5	State
Bed Capacity	34	90		44		168
Utilization Rate	61%	82%		130%		91%

Transitional/Halfway House 3.1

	Region 1	Region 2	Region 3	Region 4	Region 5	State
Bed Capacity	6		34	22	13	75
Utilization Rate	60%		82%	74%	96%	81%

Bed Capacity and Utilization by Region - Mental Health

Forensic MH - Crisis

Respite Bed

	Region 1	Region 2	Region 3	Region 4	Region 5	State
Bed Capacity	6	4		3	4	17
Utilization Rate	44%	76%		14%	59%	50%

Forensic MH - Inpatient

Acute Psychiatric

	Region 1	Region 2	Region 3	Region 4	Region 5	State
Bed Capacity		232				232
Utilization Rate		87%				87%

Forensic MH - Residential

IMH Intensive Res. Rehabilitation

	Region 1	Region 2	Region 3	Region 4	Region 5	State
Bed Capacity		6				6
Utilization Rate		72%				72%

Transitional

	Region 1	Region 2	Region 3	Region 4	Region 5	State	State
Bed Capacity			9				9
Utilization Rate			61%				61%

Mental Health - Crisis

Respite Bed

	Region 1	Region 2	Region 3	Region 4	Region 5	State
Bed Capacity	10	35		20	26	91
Utilization Rate	75%	54%		58%	66%	60%

Mental Health - Inpatient

Acute Psychiatric

	Region 1	Region 2	Region 3	Region 4	Region 5	State
Bed Capacity	62	264	2			328
Utilization Rate	98%	87%	8%			88%

Acute Psychiatric - Intermediate

	Region 1	Region 2	Region 3	Region 4	Region 5	State
Bed Capacity	8		3			11
Utilization Rate	56%		196%			94%

Non-Certified Subacute

	Region 1	Region 2	Region 3	Region 4	Region 5	State
Bed Capacity				16		16
Utilization Rate				95%		95%

Bed Capacity and Utilization by Region - Mental Health, continued

Mental Health - Residential

Group Home

	Region 1	Region 2	Region 3	Region 4	Region 5	State
Bed Capacity	36	55	14	42	42	189
Utilization Rate	87%	102%*	75%	95%	80%	93%

MH Intensive Res. Rehabilitation

	Region 1	Region 2	Region 3	Region 4	Region 5	State
Bed Capacity		55	6	117	22	200
Utilization Rate		97%	98%	97%	91%	96%

Residential Support

	Region 1	Region 2	Region 3	Region 4	Region 5	State
Bed Capacity	70	40	1	12	145	268
Utilization Rate	79%	85%	100%	92%	73%	77%

Sub-Acute

	Region 1	Region 2	Region 3	Region 4	Region 5	State
Bed Capacity			15			15
Utilization Rate			77%			77%

Supervised Apartments

	Region 1	Region 2	Region 3	Region 4	Region 5	State
Bed Capacity	86	150	132	159	134	661
Utilization Rate	93%	92%	83%	84%	90%	88%

Transitional

	Region 1	Region 2	Region 3	Region 4	Region 5	State
Bed Capacity	13		9		14	36
Utilization Rate	67%		84%		84%	78%

* This percentage omits an unfunded bed that has become funded as of SFY23.