



**Recovery
Network**

OF PROGRAMS



**STAMFORD
POLICE
DEPARTMENT**

BEHAVIORAL HEALTH UNIT



- An innovative unit that combines the **City of Stamford and Recovery Network of Programs** to join forces to address mental health.

About Us

STAMFORD PD Response to MH

EMS Response

- Patrol will stage nearby for non-violent calls

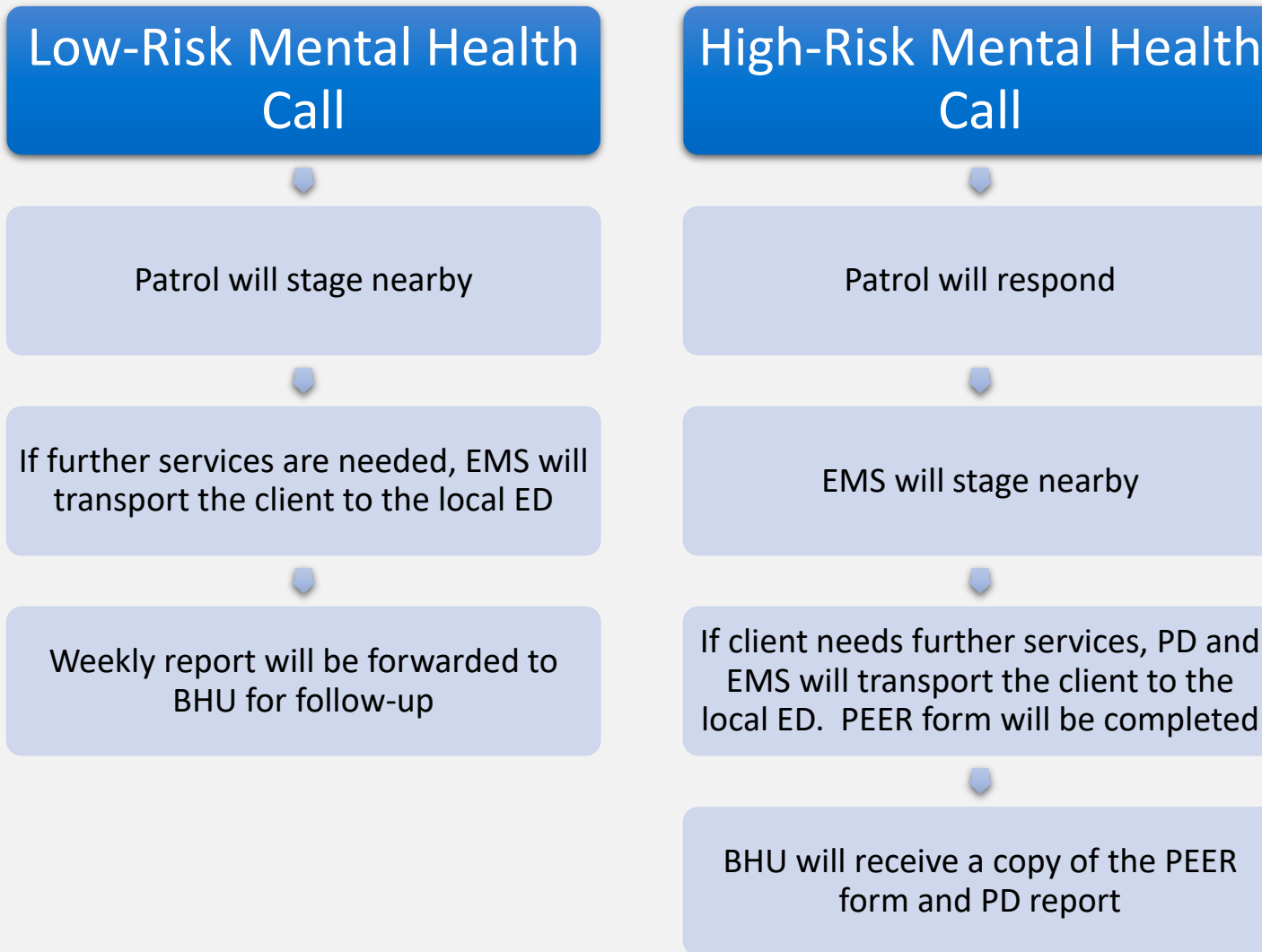
CIT Training

- 70% of Stamford PD

LCSW Embedded

- FTA LCSW
 - Referral
 - Crisis Intervention

911 Call



Our Areas of Service

Mental Health

Elderly Services

Youth Mental Health

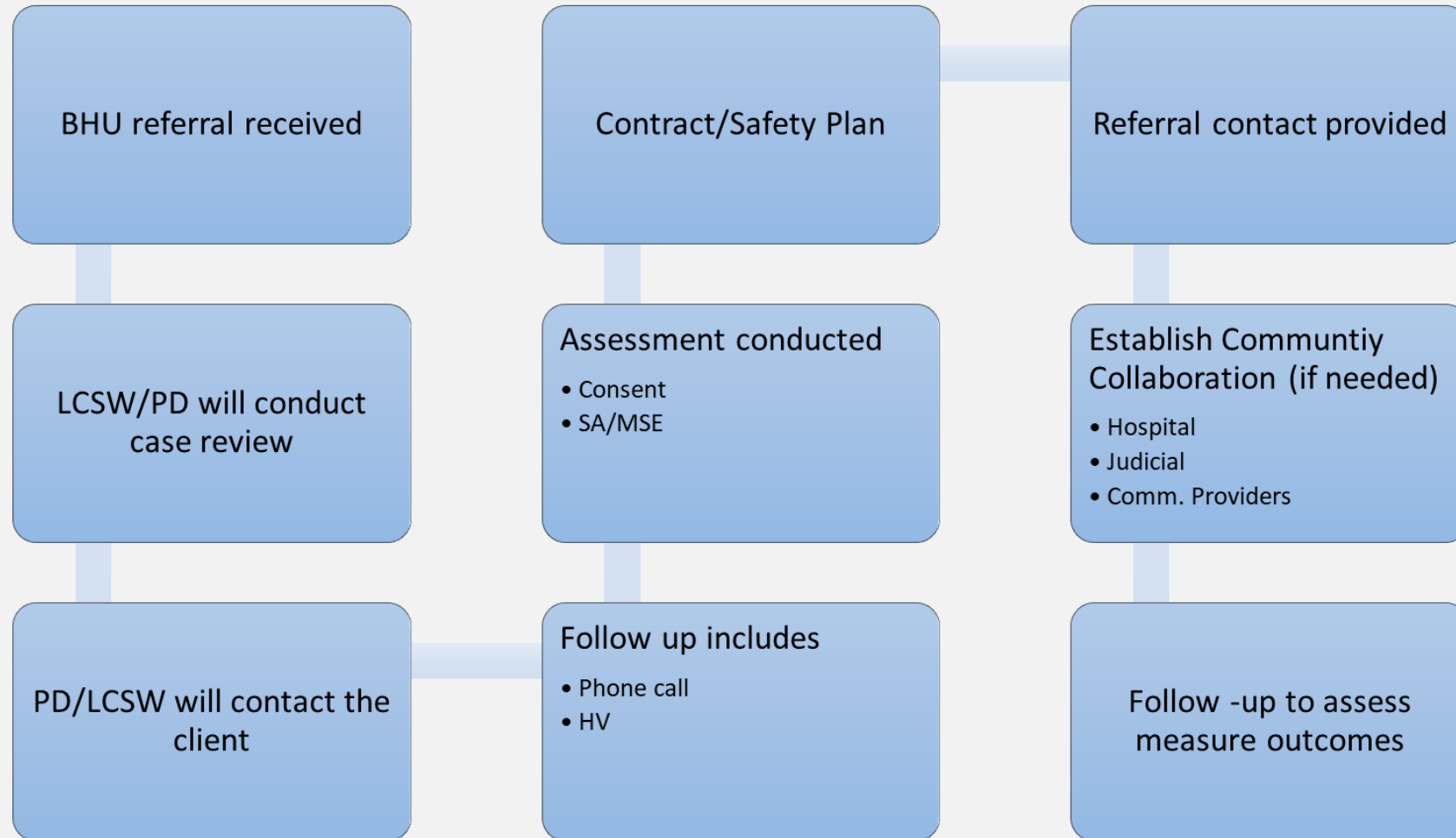
Substance Use Disorder

Basic Needs

Domestic Violence



BHU CASE FLOW



First Year Review

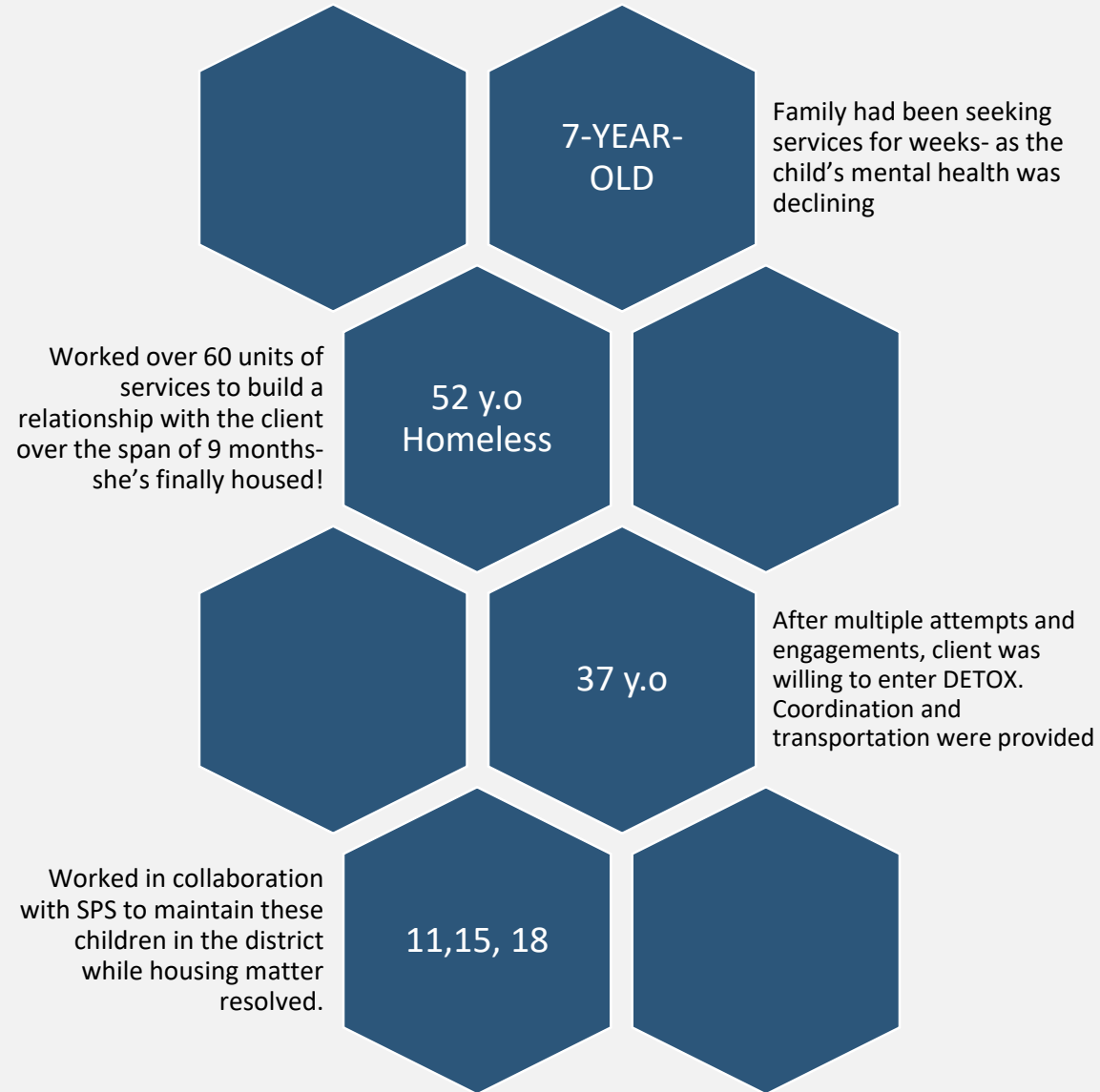
Cross-System Collaborations

- G.A. 1 JUDICIAL
- STAMFORD HOSPITAL
- COMMUNITY PROVIDERS
- PUBLIC SCHOOLS
- SOCIAL SERVICES
- ADULT PROTECTIVE SERVICES
- DEPARTMENT OF CHILDREN AND FAMILIES
- CITY OF STAMFORD
- FIRE DEPARTMENT
- EMS

SERVICES PROVIDED

- CONDUCTED 50 COMMUNITY OUTREACH ACTIVITIES
- 250 CASES (FROM 5-YEAR-OLD TO 99-YEARS-OLD)
- 700 UNITS OF SERVICE PROVIDED
- REFERRALS PROVIDED TO
 - BASIC NEEDS ADDRESSED
 - MENTAL HEALTH
 - SUBSTANCE USE DISORDER
 - DOMESTIC VIOLENCE
 - SEXUAL ABUSE
 - HOUSING
 - EDUCATION

CASE EXAMPLES



THANK YOU

203-977-4412 📞

spdbhu@stamfordct.gov ✉️