

CONNECTICUT FAMILY VIOLENCE 2019 ARREST REPORT



Department of Emergency Services and Public Protection

Crimes Analysis Unit, Division of State Police

James C. Rovella, Commissioner

Table of Contents

Family Violence Summary 2019.....	1-2
Overview	3
Volume 1987 - 2019.....	3
Participants	4
Offenses	4-6
Relationships.....	7
Intimate Partner Incidents – Intimate Partner Dual Arrest Incidents	7-13
Weapons	14
Injury	15
Injury – Weapon Type.....	16-17
Total Incidents/Total Offenses – Time of Day	18
Total Incidents/Total Offenses – Day of Week.....	19
Total Incidents/Total Offenses – Month of Year	20
Participants – Age Cohort	21
Orders of Protection	22-23
Children Involved Under 18 Years Old.....	24
Family Violence Incidents – Reporting Agency CY 2010 – CY 2019.....	25-26
Offenses by Type – Reporting Agency CY 2019	27-28
Family Violence Arrest Incidents by Town 2019 (Map).....	29
Total Incidents – Offenses – Offense Rate by Town CY 2019.....	30-32
Appendix 1 - Family Violence Offense Report	33-34

Family Violence Summary 2019

- Family violence incidents reported by police in calendar year (CY) 2019 totaled 16,331, a decrease of 4.7 percent compared to the 17,130 reported in CY 2018.
- The 16,331 family violence incidents reported in CY 2019 involved 34,447 participants. Victims totaled 16,152 and offenders totaled 14,601. A total of 3,694 individuals were involved in incidents where all participants were arrested.
- There were 24 family violence homicide incidents in 2019 resulting in 29 deaths; 26 victims and three offender suicides.
- Reported offenses in CY 2019 equaled 27,046, a decrease of 7.3 percent compared to the 29,176 reported in CY 2018. Breach of peace/disorderly conduct accounted for 45.8 percent of total offenses (12,388) and assault accounted for 24.7 percent (6,686).
- Females were the victim of 66.8 percent of all offenses (18,065); males were the victim of 33.2 percent of all offenses (8,981).
- Individuals in a dating relationship were most commonly participants in family violence incidents, 34.2 percent of total incidents (5,583).
- Intimate partner arrest incidents (12,486) accounted for 76.5 percent of total family violence arrest incidents (16,331) during CY 2019, the same percent as CY 2018.
- Intimate partner dual arrest incidents (1,281) accounted for 7.8 percent of total family violence arrest incidents (16,331) during CY 2019, down from 12.4 percent in CY 2018.
- Intimate partner dual arrest incidents (1,281) accounted for 10.3 percent of total intimate partner arrest incidents (12,486) during CY 2019, down from 16.2 percent in CY 2018.
- A weapon was used in 66.3 percent of family violence incidents. A weapon is defined as any object, instrument, device or part of the anatomy used in an attack. Hands, fist, feet, or other parts of the anatomy were used as a weapon in 59.1 percent of total incidents (9,655). Firearms were used as a weapon in 129 incidents, 0.8 percent of total incidents (16,331) and 1.2 percent of incidents involving a weapon (10,835).
- An injury was sustained by 38.0 percent of family violence victims, with minor injury being the most common injury. An injury is classified as minor when the victim does not suffer obvious, severe or aggravated bodily injury involving apparent broken bones, loss of teeth, possible internal injury, severe laceration, or loss of consciousness.

- The most frequent hour of family violence incidents was between 9:00 p.m. and 9:59 p.m., when 1,138 of the incidents occurred.
- The most frequent day of family violence occurrences was Sunday, 17.8 percent of total incidents (2,900) followed by Saturday, 16.4 percent (2,676). Historically, most family violence incidents occur on either Sunday or Saturday.
- The most frequent month of family violence occurrences was July, 9.4 percent of total incidents (1,528). Warm weather months, May through September, typically have the most family violence occurrences, with the specific month varying from year to year.
- The age cohort of 25-29 years had the highest number of family violence participants, 5,488 (15.9 percent). Specifically, there were 2,240 victims, 2,601 offenders, and 647 participants who were both the victim and the offender.
- In 77.5 percent of family violence incidents there was no court order of protection in place.
- Children less than 18 years of age were involved in 1,507 incidents (9.2 percent of total incidents) and the victims of 1,919 offenses (7.1 percent of total offenses).
- New Haven had the largest number of reported family violence arrest incidents, 1,571. Waterbury (968) and Hartford (903) followed.
- New Britain had the highest offense rate per 100,000 population, 2,233. Norwich (1,999) and New London (1,932) followed.

Overview

The calendar year (CY) 2019 Family Violence Arrest Report contains information on the number of family violence arrests occurring during CY 2019 which were reported to the Department of Emergency Services and Public Protection, State Police Division, Crimes Analysis Unit, by Connecticut law enforcement agencies prior to July 1, 2020. As defined in Connecticut General Statute 46b-38d(b), "Each police department, including resident troopers and constables, shall report all family violence incidents where an arrest occurs to the Commissioner of Emergency Services and Public Protection, who shall compile statistics of family violence crimes and cause them to be published annually in the Connecticut Uniform Crime Report."

Police in Connecticut are required to make an arrest whenever they respond to a call that involves family violence and there is enough probable cause to affect an arrest. As defined in Connecticut General Statute 46b-38a(1), "Family violence" means an incident resulting in physical harm, bodily injury or assault, or an act of threatened violence that constitutes fear of imminent physical harm, bodily injury or assault, including, but not limited to, stalking or a pattern of threatening, between family or household members. Verbal abuse or argument shall not constitute family violence unless there is present danger and the likelihood that physical violence will occur. "Family violence crime" does not include acts by parents or guardians disciplining minor children unless such acts constitute abuse.

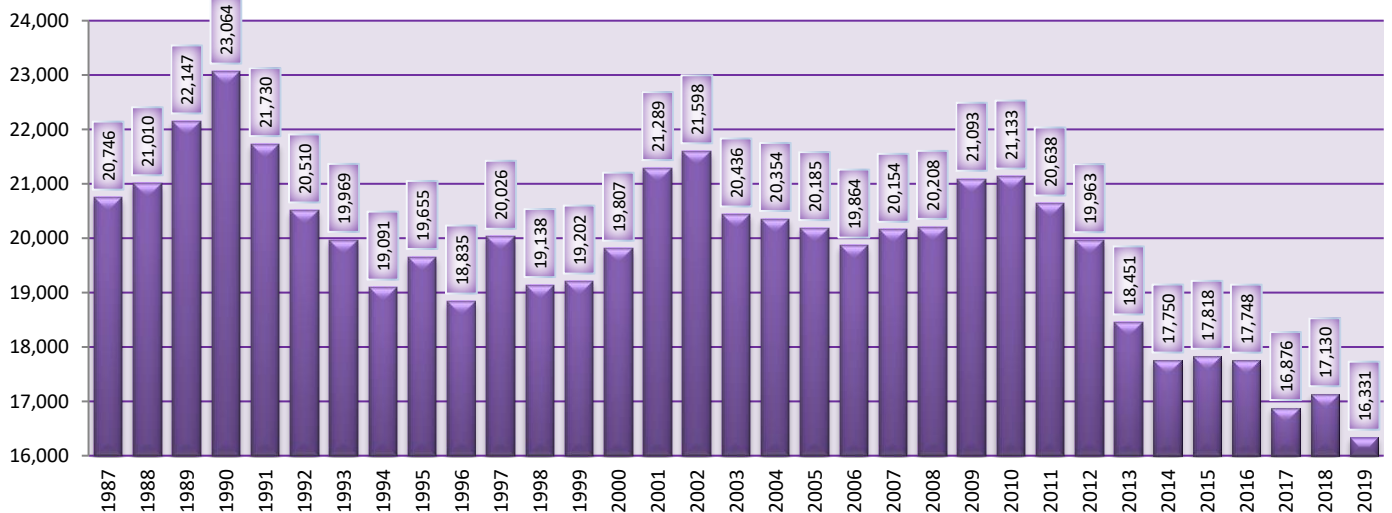
According to Connecticut General Statute 46b-38a(2), "Family or household member" means any of the following persons, regardless of the age of such person: (A) Spouses or former spouses; (B) parents or their children; (C) persons related by blood or marriage; (D) persons other than those persons described in subparagraph (C) of this subdivision presently residing together or who have resided together; (E) persons who have a child in common regardless of whether they are or have been married or have lived together at any time; and (F) persons in, or who have recently been in, a dating relationship.

ANALYSIS

Volume 1987 - 2019

There were 16,331 reported incidents of family violence CY 2019. This represents a 4.7 percent decrease (799) from the number reported in CY 2018 (17,130).

Reported Family Violence Incidents 1987-2019



Participants

A review of the 16,331 family violence arrest incidents reported during CY 2019 shows that there were 34,447 participants. A total of 16,152 individuals were identified as victims. A closer look at the victim total shows that 11,213 victims were female (69.4 percent) and 4,939 were male (30.6 percent). There were 14,601 individuals identified as offenders. Of the offender total, females accounted for 3,641 (24.9 percent), while males accounted for 10,960 (75.1 percent). Also, 3,694 individuals were identified as both victim and offender (i.e., dual arrest incidents). Of the individuals identified as both victim and offender, 1,801 were female (48.8 percent), while 1,893 were male (51.2 percent).

Percent Participants - Gender



Participants - Relationship

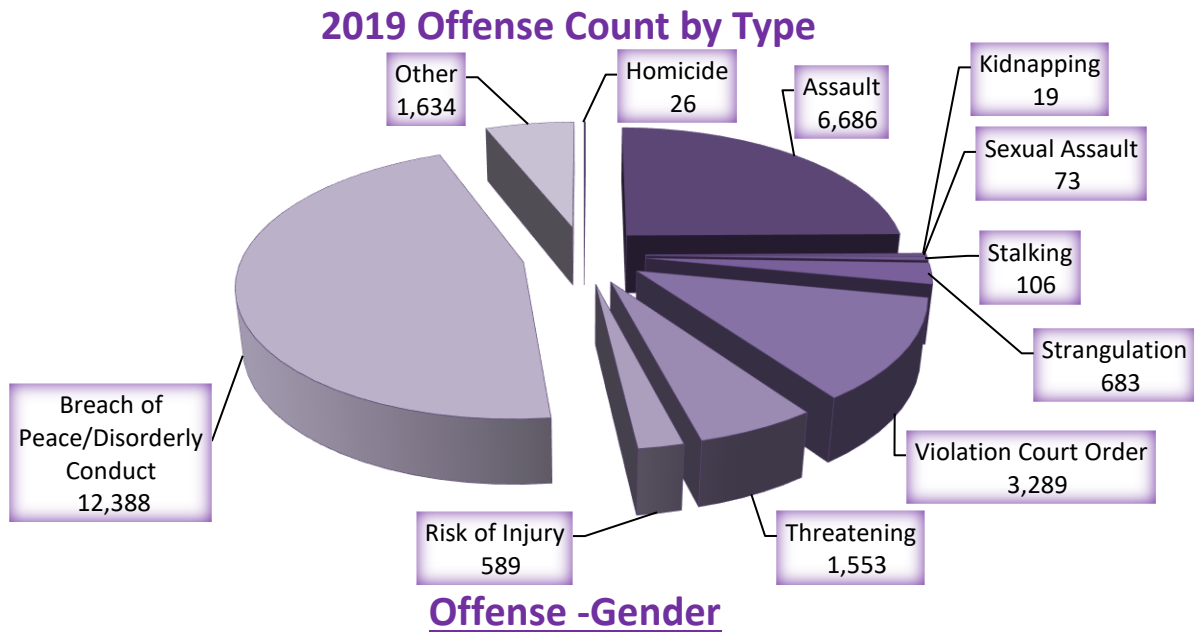
Relationship	Victim to Offender		Both/All Arrested	
	Male	Female	Male	Female
Spouse	563	1,697	220	215
Former Spouse	128	395	71	61
Persons who have a child in common	312	1,033	157	150
Dating Relationship	1,261	3,743	624	626
Presently living or have lived together	705	1,472	323	287
Other relative residing in home	1,475	2,143	366	325
Other relative <i>not</i> residing in home	495	730	132	137

Offenses

Due to policy changes designed to strengthen family violence data, beginning with CY 2014 all victim offenses occurring in family violence arrests are counted. In previous years, one offense type was recorded for each incident following a hierarchy rule to ensure the most serious offense was counted. Also, there are several changes in the offense categories on the Family Violence Offense Report, form DPS-230-C (Appendix 1), the form that is submitted to DESPP when a family violence arrest is made.

New offenses beginning in CY 2014 include stalking, strangulation, and threatening. Offenses combined on the new version of the form are breach of peace and disorderly conduct. Offenses that were previously combined and now individually counted are violation of court order and other. Offenses with no change are homicide, assault, kidnapping, sexual assault, and risk of injury. While not affecting the incident total, these changes increased the total number reported offenses making the offense count not comparable to previous years.

During CY 2019, the family violence offenses equaled 27,046, a decrease of 7.3 percent compared to the 29,176 offenses reported in CY 2018. Breach of peace/disorderly conduct was the most common family violence offense (12,388) accounting for 45.8 percent of total offenses. The second most common offense was assault (6,686), 24.7 percent of all offenses, followed by violation court order (3,289), 12.2 percent.



Offense	Offense Total	Male Victims		Female Victims	
		#	%	#	%
Homicide	26	14	53.8	12	46.2
Assault	6,686	2,405	36.0	4,281	64.0
Kidnapping	19	2	10.5	17	89.5
Sexual Assault	73	5	6.8	68	93.2
Strangulation*	683	79	11.6	604	88.4
Stalking*	106	13	12.3	93	87.7
Violation Court Order	3,289	826	25.1	2,463	74.9
Threatening*	1,553	423	27.2	1,130	72.8
Risk of Injury	589	289	49.1	300	50.9
Breach of Peace/Disorderly Conduct	12,388	4,465	36.0	7,923	64.0
Other	1,634	460	28.2	1,174	71.8
Total	27,046	8,981	33.2	18,065	66.8

*New Offenses beginning CY 2014

Offense Type by Victim/Offender Relationship

Offense	Spouse		Former Spouse		Persons who have a child in common		Dating Relationship		Presently living or have lived together		Other relative residing in home		Other relative not residing in home	
	Male	Female	Male	Female	Male	Female	Male	Female	Male	Female	Male	Female	Male	Female
Homicide	3	3	0	2	0	1	0	3	4	1	5	1	2	1
Assault	199	521	30	79	97	300	543	1,417	230	485	493	646	157	207
Kidnapping	0	2	0	0	0	2	0	10	1	1	1	1		1
Sexual Assault	0	7	1	2	0	3	1	21	0	18	3	4	0	13
Strangulation	4	109	1	11	0	51	11	269	5	94	29	38	5	10
Stalking	2	12	0	14	0	14	11	33	0	14	0	3	0	3
Violation Court Order	70	324	33	162	68	310	215	892	106	319	108	196	75	130
Threatening	27	185	9	48	15	115	50	328	58	139	165	221	58	69
Risk of Injury	0	0	0	0	0	0	0	0	27	30	220	219	42	51
Breach/Disorderly	387	1,102	72	158	220	592	735	2,015	471	954	845	1,307	281	399
Other	32	125	18	43	30	135	113	384	67	204	94	140	39	64
Total	724	2,390	164	519	430	1,523	1,679	5,372	969	2,259	1,963	2,776	659	948

Offense Type by Both/All Arrested Relationship

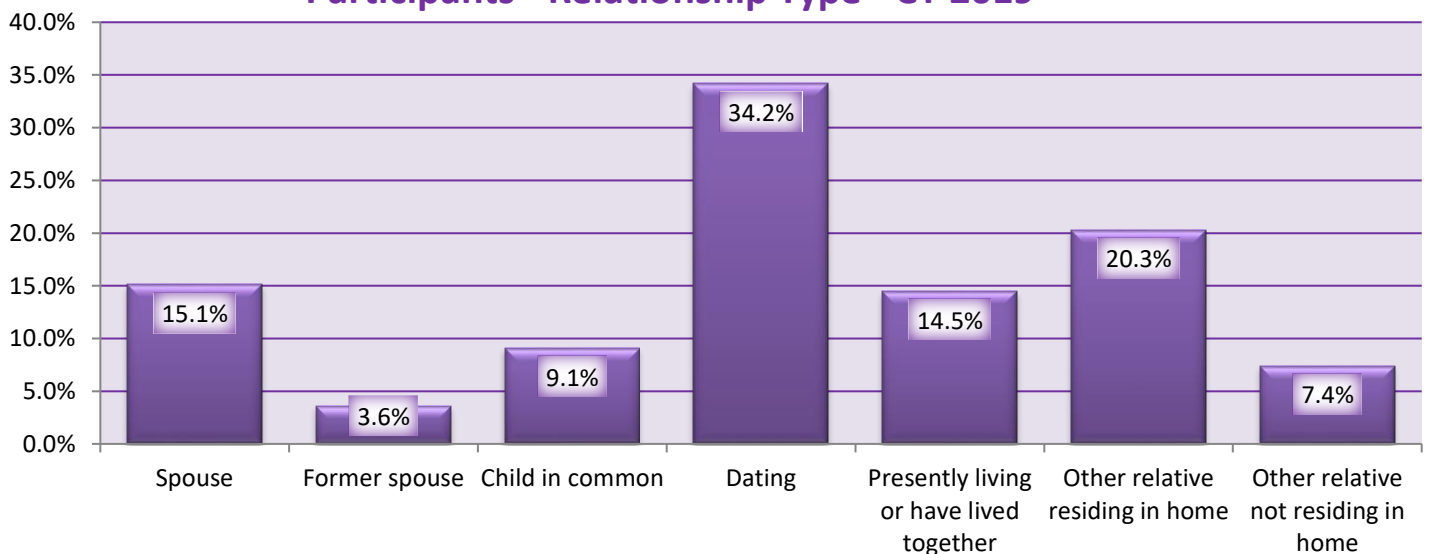
Offense	Spouse		Former Spouse		Persons who have a child in common		Dating Relationship		Presently living or have lived together		Other relative residing in home		Other relative not residing in home	
	Male	Female	Male	Female	Male	Female	Male	Female	Male	Female	Male	Female	Male	Female
Homicide	0	0	0	0	0	0	0	0	0	0	0	0	0	0
Assault	64	73	31	25	37	38	219	218	108	94	146	129	51	49
Kidnapping	0	0	0	0	0	0	0	0	0	0	0	0	0	0
Sexual Assault	0	0	0	0	0	0	0	0	0	0	0	0	0	0
Strangulation	3	3	3	1	1	2	7	11	5	3	3	1	2	1
Stalking	0	0	0	0	0	0	0	0	0	0	0	0	0	0
Violation Court Order	16	11	8	7	19	14	85	80	20	12	2	3	1	3
Threatening	5	4	1	0	3	2	9	11	7	3	12	3	4	2
Risk of Injury	0	0	0	0	0	0	0	0	0	0	0	0	0	0
Breach/Disorderly	180	172	56	43	128	129	442	441	256	239	290	268	102	104
Other	4	7	2	3	8	5	31	37	11	16	6	7	5	4
Total	272	270	101	79	196	190	793	798	407	367	459	411	165	163

Relationships

During CY 2019, individuals in a dating relationship were most commonly participants in family violence incidents, 34.2 percent of total incidents (5,583). Following were other relative residing in home, 20.3 percent of total incidents (3,323), and spouse 15.1 percent of total incidents (2,461). In incidents involving more than one relationship type, all relationships types are counted in the following table.

Relationship	2019		2018		2017		2016		2015	
	# Incidents	% Total Incidents	# Incidents	% Total Incidents	# Incidents	% Total Incidents	# Incidents	% Total Incidents	# Incidents	% Total Incidents
Spouse	2,461	15.1	2,607	15.2	2,582	15.3	2,715	15.3	2,705	15.2
Former Spouse	589	3.6	579	3.4	582	3.4	659	3.7	685	3.8
Persons who have a child in common	1,494	9.1	1,495	8.7	1,530	9.1	1,610	9.1	1,667	9.4
Dating Relationship	5,583	34.2	5,637	32.9	5,227	31.0	5,321	30.0	4,962	27.8
Presently living or have lived together	2,375	14.5	2,779	16.2	2,788	16.5	3,086	17.4	3,322	18.6
Other relative residing in home	3,323	20.3	3,484	20.3	3,446	20.4	3,638	20.5	3,759	21.1
Other relative <i>not</i> residing in home	1,216	7.4	1,172	6.8	1,165	6.9	1,167	6.6	1,206	6.8

Participants - Relationship Type - CY 2019



Intimate Partner Incidents – Intimate Partner Dual Arrest Incidents

Intimate partner arrest incidents (12,486) accounted for 76.5 percent of total family violence arrest incidents (16,331) during CY 2019, the same percent as CY 2018. Intimate partner dual arrest incidents (1,281) accounted for 7.8 percent of total family violence arrest incidents (16,331) during CY 2019, down from 12.4 percent in CY 2018. Intimate partner dual arrest incidents (1,281) accounted for 10.3 percent of total intimate partner arrest incidents (12,486) during CY 2019, down from 16.2 percent in CY 2018.

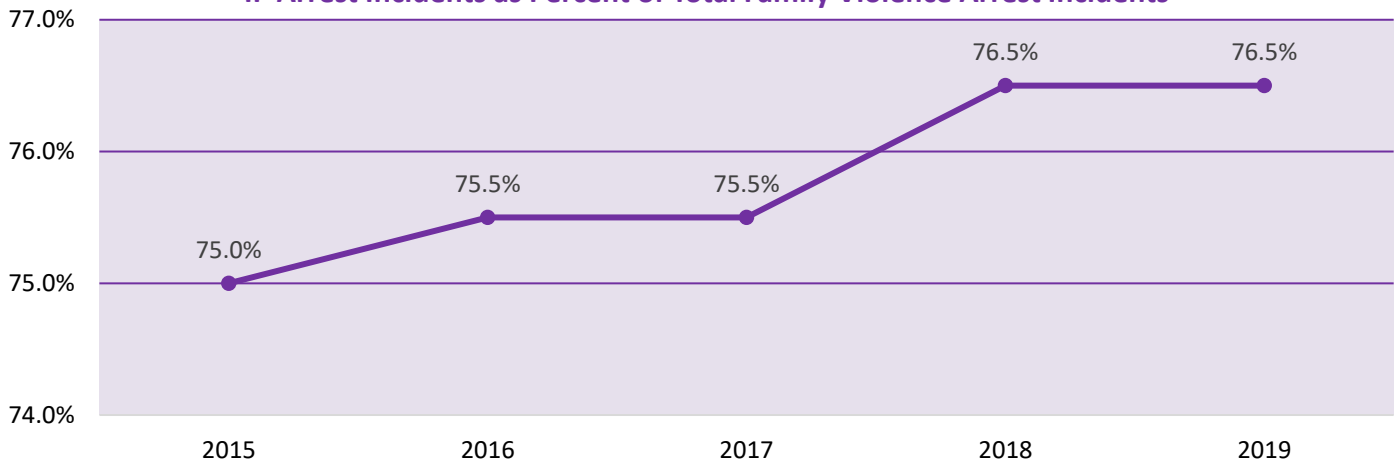
**TOTAL FAMILY VIOLENCE ARREST INCIDENTS - INTIMATE PARTNER ARREST INCIDENTS
CY 2015 - CY 2019**

Reporting Agency	2015			2016			2017			2018			2019		
	Total	IP	%	Total	IP	%	Total	IP	%	Total	IP	%	Total	IP	%
Connecticut Total	17,818	13,367	75.0%	17,748	13,403	75.5%	16,876	12,739	75.5%	17,130	13,108	76.5%	16,331	12,486	76.5%
AMTRAK	1	1	100.0%	0	0	N/A	1	1	100.0%	2	2	100.0%	0	0	N/A
Ansonia	100	72	72.0%	113	79	69.9%	108	67	62.0%	139	100	71.9%	124	95	76.6%
Avon	29	23	79.3%	25	19	76.0%	20	13	65.0%	16	12	75.0%	26	16	61.5%
Berlin	56	43	76.8%	58	42	72.4%	43	35	81.4%	44	38	86.4%	42	30	71.4%
Bethel	55	39	70.9%	74	55	74.3%	65	53	81.5%	67	50	74.6%	60	39	65.0%
Bloomfield	131	89	67.9%	138	93	67.4%	121	84	69.4%	128	78	60.9%	124	76	61.3%
Branford	156	120	76.9%	157	121	77.1%	152	116	76.3%	118	86	72.9%	139	94	67.6%
Bridgeport	626	493	78.8%	616	467	75.8%	603	432	71.6%	748	550	73.5%	810	600	74.1%
Bristol	391	303	77.5%	429	309	72.0%	415	308	74.2%	311	233	74.9%	294	237	80.6%
Brookfield	29	16	55.2%	37	25	67.6%	31	24	77.4%	44	32	72.7%	38	28	73.7%
Canton	5	3	60.0%	6	6	100.0%	7	5	71.4%	3	1	33.3%	9	9	100.0%
Central CT State Univ.	0	0	N/A	0	0	N/A	10	10	100.0%	6	6	100.0%	3	3	100.0%
Cheshire	90	50	55.6%	78	48	61.5%	86	47	54.7%	61	37	60.7%	42	24	57.1%
Clinton	91	74	81.3%	77	59	76.6%	73	55	75.3%	64	47	73.4%	69	42	60.9%
Coventry	17	15	88.2%	18	15	83.3%	20	15	75.0%	37	25	67.6%	33	24	72.7%
Cromwell	56	40	71.4%	42	25	59.5%	40	35	87.5%	43	36	83.7%	47	37	78.7%
CT State Capitol Police	0	0	N/A	1	1	100.0%	0	0	N/A	0	0	N/A	0	0	N/A
Danbury	343	256	74.6%	355	282	79.4%	329	230	69.9%	356	287	80.6%	310	250	80.6%
Darien	24	17	70.8%	32	20	62.5%	25	18	72.0%	28	20	71.4%	21	12	57.1%
DEEP	5	5	100.0%	9	8	88.9%	4	3	75.0%	8	8	100.0%	9	8	88.9%
Derby	120	90	75.0%	106	74	69.8%	132	94	71.2%	103	73	70.9%	98	78	79.6%
DMHAS	1	0	0.0%	2	2	100.0%	0	0	N/A	0	0	N/A	1	0	0.0%
East Hampton	48	36	75.0%	43	33	76.7%	38	26	68.4%	26	20	76.9%	30	19	63.3%
East Hartford	393	312	79.4%	378	297	78.6%	319	253	79.3%	256	206	80.5%	257	198	77.0%
East Haven	223	159	71.3%	227	156	68.7%	249	182	73.1%	264	175	66.3%	230	166	72.2%
East Lyme	0	0	N/A	0	0	N/A	13	11	84.6%	17	14	82.4%	17	15	88.2%
East Windsor	62	43	69.4%	71	58	81.7%	78	64	82.1%	92	68	73.9%	68	53	77.9%
Eastern CT State Univ.	15	14	93.3%	5	5	100.0%	7	7	100.0%	2	2	100.0%	3	3	100.0%
Easton	10	7	70.0%	10	7	70.0%	21	14	66.7%	10	7	70.0%	8	5	62.5%
Enfield	250	188	75.2%	165	120	72.7%	148	105	70.9%	175	138	78.9%	183	132	72.1%
Fairfield	87	68	78.2%	72	54	75.0%	77	54	70.1%	101	66	65.3%	75	59	78.7%
Farmington	48	38	79.2%	56	33	58.9%	44	31	70.5%	57	48	84.2%	41	31	75.6%
Glastonbury	87	47	54.0%	79	48	60.8%	101	67	66.3%	84	53	63.1%	77	47	61.0%
Granby	29	22	75.9%	26	17	65.4%	29	23	79.3%	21	17	81.0%	24	18	75.0%
Greenwich	87	64	73.6%	113	85	75.2%	99	76	76.8%	110	88	80.0%	78	68	87.2%
Groton City	121	104	86.0%	102	80	78.4%	93	86	92.5%	102	87	85.3%	75	53	70.7%
Groton Long Point	0	0	N/A	0	0	N/A	0	0	N/A	0	0	N/A	0	0	N/A
Groton Town	110	83	75.5%	139	106	76.3%	147	119	81.0%	135	117	86.7%	130	112	86.2%
Guilford	63	41	65.1%	75	47	62.7%	61	40	65.6%	40	27	67.5%	36	28	77.8%
Hamden	226	163	72.1%	226	165	73.0%	247	180	72.9%	234	179	76.5%	207	153	73.9%
Hartford	1,244	991	79.7%	1,013	801	79.1%	731	583	79.8%	925	728	78.7%	893	691	77.4%
Ledyard	0	0	N/A	37	25	67.6%	36	25	69.4%	26	21	80.8%	15	10	66.7%
Madison	25	18	72.0%	25	18	72.0%	30	20	66.7%	32	23	71.9%	21	16	76.2%
Manchester	494	401	81.2%	393	312	79.4%	506	387	76.5%	533	427	80.1%	491	386	78.6%
Mashantucket Tribal	48	43	89.6%	45	42	93.3%	48	36	75.0%	71	56	78.9%	60	54	90.0%
Meriden	531	416	78.3%	639	515	80.6%	630	480	76.2%	590	468	79.3%	485	390	80.4%
Metro North	0	0	N/A	0	0	N/A	1	0	0.0%	1	1	100.0%	0	0	N/A
Middlebury	8	4	50.0%	13	11	84.6%	9	5	55.6%	10	8	80.0%	14	10	71.4%
Middletown	326	260	79.8%	366	290	79.2%	275	215	78.2%	303	242	79.9%	233	186	79.8%
Milford	170	125	73.5%	181	139	76.8%	183	126	68.9%	182	129	70.9%	203	150	73.9%
Mohegan Tribal	44	41	93.2%	43	39	90.7%	55	48	87.3%	44	41	93.2%	38	32	84.2%
Monroe	44	32	72.7%	36	27	75.0%	31	23	74.2%	50	36	72.0%	38	28	73.7%
Naugatuck	205	133	64.9%	177	129	72.9%	163	116	71.2%	144	105	72.9%	143	103	72.0%
New Britain	839	669	79.7%	727	575	79.1%	554	431	77.8%	552	449	81.3%	782	650	83.1%
New Canaan	15	10	66.7%	25	15	60.0%	18	13	72.2%	16	11	68.8%	13	7	53.8%
New Haven	1,793	1,301	72.6%	1,769	1,318	74.5%	1,792	1,341	74.8%	1,783	1,289	72.3%	1,561	1,159	74.2%
New London	339	263	77.6%	356	283	79.5%	340	290	85.3%	332	280	84.3%	305	256	83.9%
New Milford	162	137	84.6%	148	118	79.7%	159	127	79.9%	155	127	81.9%	150	111	74.0%
Newington	152	97	63.8%	162	107	66.0%	119	80	67.2%	128	84	65.6%	113	70	61.9%
Newtown	39	31	79.5%	49	31	63.3%	38	25	65.8%	47	29	61.7%	36	23	63.9%
North Branford	54	36	66.7%	50	32	64.0%	52	35	67.3%	30	16	53.3%	49	36	73.5%
North Haven	70	42	60.0%	82	60	73.2%	70	48	68.6%	73	49	67.1%	70	48	68.6%
Norwalk	406	310	76.4%	384	304	79.2%	394	291	73.9%	407	321	78.9%	368	300	81.5%
Norwich	401	311	77.6%	371	304	81.9%	409	319	78.0%	428	343	80.1%	398	330	82.9%
Old Saybrook	39	26	66.7%	49	32	65.3%	44	31	70.5%	57	44	77.2%	60	47	78.3%
Orange	34	24	70.6%	44	33	75.0%	19	15	78.9%	32	23	71.9%	47	42	89.4%
Plainfield	54	46	85.2%	77	53	68.8%	84	68	81.0%	65	56	86.2%	86	68	79.1%
Plainville	155	116	74.8%	160	128	80.0%	146	119	81.5%	133	94	70.7%	137	101	73.7%
Plymouth	85	62	72.9%	75	64	85.3%	70	55	78.6%	63	48	76.2%	47	44	93.6%
Portland	9	7	77.8%	14	11	78.6%	11	9	81.8%	22	15	68.2%	17	13	76.5%
Putnam Municipal	83	68	81.9%	81	67	82.7%	101	86	85.1%	116	95	81.9%	84	69	82.1%

**TOTAL FAMILY VIOLENCE ARREST INCIDENTS - INTIMATE PARTNER ARREST INCIDENTS
CY 2015 - CY 2019**

Reporting Agency	2015			2016			2017			2018			2019		
	Total	IP	%	Total	IP	%	Total	IP	%	Total	IP	%	Total	IP	%
Redding	8	3	37.5%	13	8	61.5%	12	9	75.0%	10	9	90.0%	3	3	100.0%
Ridgefield	32	17	53.1%	39	21	53.8%	31	22	71.0%	31	19	61.3%	28	16	57.1%
Rocky Hill	69	54	78.3%	55	31	56.4%	60	46	76.7%	53	44	83.0%	62	44	71.0%
Seymour	97	71	73.2%	89	68	76.4%	71	51	71.8%	61	52	85.2%	70	48	68.6%
Shelton	99	75	75.8%	94	70	74.5%	104	86	82.7%	85	61	71.8%	109	86	78.9%
Simsbury	40	25	62.5%	40	29	72.5%	42	34	81.0%	54	42	77.8%	32	27	84.4%
South Windsor	75	61	81.3%	57	43	75.4%	64	41	64.1%	46	29	63.0%	70	49	70.0%
Southern CT State Univ.	2	2	100.0%	9	9	100.0%	7	7	100.0%	1	1	100.0%	1	1	100.0%
Southington	151	103	68.2%	160	114	71.3%	157	109	69.4%	162	138	85.2%	185	132	71.4%
Stamford	282	202	71.6%	347	240	69.2%	316	225	71.2%	405	304	75.1%	326	236	72.4%
Stonington	101	82	81.2%	110	84	76.4%	114	87	76.3%	98	70	71.4%	95	74	77.9%
Stratford	120	84	70.0%	165	115	69.7%	203	147	72.4%	233	163	70.0%	236	163	69.1%
Suffield	22	17	77.3%	26	16	61.5%	31	24	77.4%	33	26	78.8%	26	18	69.2%
Thomaston	30	20	66.7%	28	24	85.7%	39	31	79.5%	36	29	80.6%	44	33	75.0%
Torrington	345	283	82.0%	354	290	81.9%	345	283	82.0%	300	238	79.3%	252	208	82.5%
Trumbull	58	41	70.7%	50	40	80.0%	57	39	68.4%	64	52	81.3%	41	30	73.2%
UCONN Health	0	0	N/A	0	0	N/A	0	0	N/A	0	0	N/A	3	3	100.0%
UCONN Storrs	29	27	93.1%	29	28	96.6%	20	19	95.0%	16	16	100.0%	15	15	100.0%
Vernon	186	142	76.3%	189	134	70.9%	166	138	83.1%	171	140	81.9%	200	150	75.0%
Wallingford	204	138	67.6%	182	126	69.2%	166	129	77.7%	175	134	76.6%	171	133	77.8%
Waterbury	922	635	68.9%	1,073	794	74.0%	932	686	73.6%	993	754	75.9%	965	741	76.8%
Waterford	71	55	77.5%	82	59	72.0%	53	38	71.7%	47	36	76.6%	48	38	79.2%
Watertown	124	80	64.5%	92	55	59.8%	103	73	70.9%	80	60	75.0%	79	61	77.2%
West Hartford	199	149	74.9%	159	123	77.4%	167	130	77.8%	167	127	76.0%	196	140	71.4%
West Haven	323	246	76.2%	413	319	77.2%	393	309	78.6%	364	284	78.0%	280	210	75.0%
Western CT State Univ.	1	1	100.0%	4	4	100.0%	4	4	100.0%	2	2	100.0%	1	1	100.0%
Weston	18	12	66.7%	16	9	56.3%	10	3	30.0%	14	9	64.3%	12	10	83.3%
Westport	46	36	78.3%	56	43	76.8%	43	32	74.4%	39	28	71.8%	35	23	65.7%
Wethersfield	86	67	77.9%	66	52	78.8%	70	49	70.0%	77	57	74.0%	70	56	80.0%
Willimantic	152	115	75.7%	150	117	78.0%	145	118	81.4%	207	170	82.1%	199	155	77.9%
Wilton	38	25	65.8%	24	17	70.8%	31	26	83.9%	28	21	75.0%	28	15	53.6%
Winchester	60	44	73.3%	91	71	78.0%	88	76	86.4%	109	92	84.4%	87	73	83.9%
Windsor	130	96	73.8%	126	93	73.8%	148	109	73.6%	130	87	66.9%	120	75	62.5%
Windsor Locks	77	63	81.8%	72	52	72.2%	80	58	72.5%	80	61	76.3%	71	47	66.2%
Wolcott	74	53	71.6%	63	39	61.9%	70	54	77.1%	60	39	65.0%	63	47	74.6%
Woodbridge	19	9	47.4%	19	13	68.4%	27	21	77.8%	24	17	70.8%	12	6	50.0%
Yale	5	5	100.0%	7	7	100.0%	9	9	100.0%	1	1	100.0%	5	5	100.0%
Troop A CSP	150	91	60.7%	124	94	75.8%	117	77	65.8%	110	88	80.0%	109	77	70.6%
Troop B CSP	102	81	79.4%	95	77	81.1%	88	69	78.4%	104	80	76.9%	82	64	78.0%
Troop C CSP	178	120	67.4%	166	133	80.1%	199	144	72.4%	139	111	79.9%	203	167	82.3%
Troop D CSP	219	152	69.4%	266	191	71.8%	234	188	80.3%	248	205	82.7%	224	179	79.9%
Troop E CSP	224	168	75.0%	202	153	75.7%	149	112	75.2%	141	119	84.4%	175	142	81.1%
Troop F CSP	92	68	73.9%	96	68	70.8%	93	59	63.4%	121	84	69.4%	91	68	74.7%
Troop G CSP	46	41	89.1%	49	44	89.8%	23	22	95.7%	25	25	100.0%	26	24	92.3%
Troop H CSP	52	49	94.2%	54	48	88.9%	46	44	95.7%	54	46	85.2%	61	54	88.5%
Troop I CSP	75	55	73.3%	99	83	83.8%	78	56	71.8%	53	42	79.2%	57	40	70.2%
Troop K CSP	190	149	78.4%	168	119	70.8%	186	137	73.7%	178	129	72.5%	181	140	77.3%
Troop L CSP	142	97	68.3%	129	92	71.3%	111	79	71.2%	99	76	76.8%	87	67	77.0%
Troop R CSP	0	0	N/A	0	0	N/A	0	0	N/A	0	0	N/A	0	0	N/A
Total CSP	1,470	1,071	72.9%	1,448	1,102	76.1%	1,324	987	74.5%	1,272	1,005	79.0%	1,296	1,022	78.9%

**Connecticut
IP Arrest Incidents as Percent of Total Family Violence Arrest Incidents**



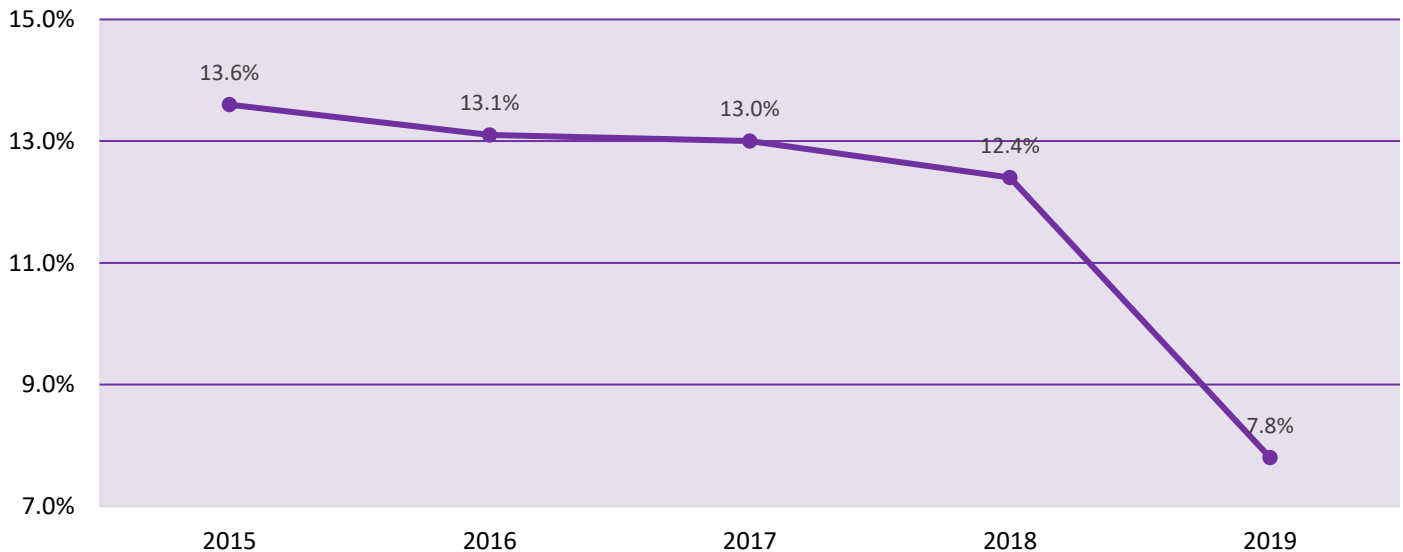
TOTAL FAMILY VIOLENCE ARREST INCIDENTS - INTIMATE PARTNER DUAL ARREST INCIDENTS
CY 2015 - CY 2019

Reporting Agency	2015			2016			2017			2018			2019		
	Total	IP Dual	%	Total	IP Dual	%	Total	IP Dual	%	Total	IP Dual	%	Total	IP Dual	%
Connecticut Total	17,818	2,421	13.6%	17,748	2,323	13.1%	16,876	2,202	13.0%	17,130	2,119	12.4%	16,331	1,281	7.8%
AMTRAK	1	0	0.0%	0	0	N/A	1	0	0.0%	2	0	0.0%	0	0	N/A
Ansonia	100	25	25.0%	113	15	13.3%	108	14	13.0%	139	14	10.1%	124	4	3.2%
Avon	29	3	10.3%	25	2	8.0%	20	1	5.0%	16	1	6.3%	26	3	11.5%
Berlin	56	3	5.4%	58	7	12.1%	43	4	9.3%	44	2	4.5%	42	1	2.4%
Bethel	55	2	3.6%	74	8	10.8%	65	5	7.7%	67	6	9.0%	60	2	3.3%
Bloomfield	131	18	13.7%	138	21	15.2%	121	21	17.4%	128	10	7.8%	124	8	6.5%
Branford	156	22	14.1%	157	17	10.8%	152	10	6.6%	118	14	11.9%	139	1	0.7%
Bridgeport	626	94	15.0%	616	73	11.9%	603	80	13.3%	748	142	19.0%	810	133	16.4%
Bristol	391	73	18.7%	429	68	15.9%	415	64	15.4%	311	43	13.8%	294	13	4.4%
Brookfield	29	2	6.9%	37	5	13.5%	31	7	22.6%	44	4	9.1%	38	3	7.9%
Canton	5	0	0.0%	6	0	0.0%	7	0	0.0%	3	0	0.0%	9	1	11.1%
Central CT State Univ.	0	0	N/A	0	0	N/A	10	3	30.0%	6	2	33.3%	3	0	0.0%
Cheshire	90	10	11.1%	78	9	11.5%	86	10	11.6%	61	9	14.8%	42	3	7.1%
Clinton	91	15	16.5%	77	5	6.5%	73	8	11.0%	64	6	9.4%	69	4	5.8%
Coventry	17	4	23.5%	18	0	0.0%	20	3	15.0%	37	1	2.7%	33	2	6.1%
Cromwell	56	12	21.4%	42	4	9.5%	40	5	12.5%	43	8	18.6%	47	2	4.3%
CT State Capitol Police	0	0	N/A	1	0	0.0%	0	0	N/A	0	0	N/A	0	0	N/A
Danbury	343	52	15.2%	355	67	18.9%	329	44	13.4%	356	51	14.3%	310	27	8.7%
Darien	24	2	8.3%	32	3	9.4%	25	1	4.0%	28	4	14.3%	21	1	4.8%
DEEP	5	1	20.0%	9	0	0.0%	4	0	0.0%	8	2	25.0%	9	0	0.0%
Derby	120	11	9.2%	106	6	5.7%	132	11	8.3%	103	15	14.6%	98	2	2.0%
DMHAS	1	0	0.0%	2	0	0.0%	0	0	N/A	0	0	N/A	1	0	0.0%
East Hampton	48	4	8.3%	43	2	4.7%	38	2	5.3%	26	3	11.5%	30	1	3.3%
East Hartford	393	59	15.0%	378	52	13.8%	319	30	9.4%	256	35	13.7%	257	13	5.1%
East Haven	223	24	10.8%	227	20	8.8%	249	28	11.2%	264	21	8.0%	230	11	4.8%
East Lyme	0	0	N/A	0	0	N/A	13	0	0.0%	17	1	5.9%	17	1	5.9%
East Windsor	62	6	9.7%	71	6	8.5%	78	8	10.3%	92	10	10.9%	68	2	2.9%
Eastern CT State Univ.	15	2	13.3%	5	1	20.0%	7	2	28.6%	2	1	50.0%	3	0	0.0%
Easton	10	0	0.0%	10	1	10.0%	21	3	14.3%	10	2	20.0%	8	1	12.5%
Enfield	250	30	12.0%	165	31	18.8%	148	22	14.9%	175	14	8.0%	183	11	6.0%
Fairfield	87	9	10.3%	72	5	6.9%	77	6	7.8%	101	9	8.9%	75	6	8.0%
Farmington	48	6	12.5%	56	9	16.1%	44	5	11.4%	57	7	12.3%	41	3	7.3%
Glastonbury	87	6	6.9%	79	9	11.4%	101	8	7.9%	84	3	3.6%	77	4	5.2%
Granby	29	4	13.8%	26	1	3.8%	29	4	13.8%	21	4	19.0%	24	4	16.7%
Greenwich	87	15	17.2%	113	8	7.1%	99	10	10.1%	110	13	11.8%	78	4	5.1%
Groton City	121	24	19.8%	102	22	21.6%	93	19	20.4%	102	22	21.6%	75	3	4.0%
Groton Long Point	0	0	N/A	0	0	N/A	0	0	N/A	0	0	N/A	0	0	N/A
Groton Town	110	12	10.9%	139	11	7.9%	147	16	10.9%	135	10	7.4%	130	7	5.4%
Guilford	63	5	7.9%	75	4	5.3%	61	4	6.6%	40	4	10.0%	36	4	11.1%
Hamden	226	46	20.4%	226	27	11.9%	247	39	15.8%	234	39	16.7%	207	12	5.8%
Hartford	1,244	157	12.6%	1,013	155	15.3%	731	123	16.8%	925	183	19.8%	893	125	14.0%
Ledyard	0	0	N/A	37	8	21.6%	36	0	0.0%	26	2	7.7%	15	0	0.0%
Madison	25	2	8.0%	25	5	20.0%	30	6	20.0%	32	3	9.4%	21	1	4.8%
Manchester	494	79	16.0%	393	57	14.5%	506	74	14.6%	533	83	15.6%	491	69	14.1%
Mashantucket Tribal	48	8	16.7%	45	9	20.0%	48	11	22.9%	71	7	9.9%	60	3	5.0%
Meriden	531	76	14.3%	639	94	14.7%	630	85	13.5%	590	79	13.4%	485	40	8.2%
Metro North	0	0	N/A	0	0	N/A	1	0	0.0%	1	0	0.0%	0	0	N/A
Middlebury	8	0	0.0%	13	2	15.4%	9	0	0.0%	10	2	20.0%	14	2	14.3%
Middletown	326	61	18.7%	366	61	16.7%	275	42	15.3%	303	43	14.2%	233	25	10.7%
Milford	170	27	15.9%	181	25	13.8%	183	34	18.6%	182	21	11.5%	203	17	8.4%
Mohegan Tribal	44	9	20.5%	43	9	20.9%	55	13	23.6%	44	6	13.6%	38	5	13.2%
Monroe	44	6	13.6%	36	5	13.9%	31	2	6.5%	50	7	14.0%	38	1	2.6%
Naugatuck	205	28	13.7%	177	33	18.6%	163	25	15.3%	144	11	7.6%	143	7	4.9%
New Britain	839	150	17.9%	727	124	17.1%	554	99	17.9%	552	86	15.6%	782	90	11.5%
New Canaan	15	0	0.0%	25	2	8.0%	18	1	5.6%	16	2	12.5%	13	1	7.7%
New Haven	1,793	251	14.0%	1,769	231	13.1%	1,792	218	12.2%	1,783	210	11.8%	1,561	26	1.7%
New London	339	56	16.5%	356	59	16.6%	340	56	16.5%	332	49	14.8%	305	27	8.9%
New Milford	162	18	11.1%	148	14	9.5%	159	16	10.1%	155	11	7.1%	150	9	6.0%
Newington	152	21	13.8%	162	17	10.5%	119	17	14.3%	128	10	7.8%	113	10	8.8%
Newtown	39	3	7.7%	49	5	10.2%	38	1	2.6%	47	2	4.3%	36	0	0.0%
North Branford	54	5	9.3%	50	6	12.0%	52	6	11.5%	30	1	3.3%	49	1	2.0%
North Haven	70	8	11.4%	82	14	17.1%	70	11	15.7%	73	4	5.5%	70	5	7.1%
Norwalk	406	71	17.5%	384	61	15.9%	394	52	13.2%	407	59	14.5%	368	41	11.1%
Norwich	401	33	8.2%	371	37	10.0%	409	39	9.5%	428	37	8.6%	398	19	4.8%
Old Saybrook	39	4	10.3%	49	6	12.2%	44	0	0.0%	57	2	3.5%	60	1	1.7%
Orange	34	5	14.7%	44	3	6.8%	19	1	5.3%	32	5	15.6%	47	3	6.4%
Plainfield	54	8	14.8%	77	3	3.9%	84	14	16.7%	65	7	10.8%	86	6	7.0%
Plainville	155	11	7.1%	160	12	7.5%	146	11	7.5%	133	13	9.8%	137	11	8.0%
Plymouth	85	15	17.6%	75	9	12.0%	70	13	18.6%	63	6	9.5%	47	3	6.4%
Portland	9	2	22.2%	14	5	35.7%	11	2	18.2%	22	2	9.1%	17	4	23.5%
Putnam Municipal	83	3	3.6%	81	10	12.3%	101	17	16.8%	116	7	6.0%	84	1	1.2%

**TOTAL FAMILY VIOLENCE ARREST INCIDENTS - INTIMATE PARTNER DUAL ARREST INCIDENTS
CY 2015 - CY 2019**

Reporting Agency	2015			2016			2017			2018			2019		
	Total	IP Dual	%	Total	IP Dual	%	Total	IP Dual	%	Total	IP Dual	%	Total	IP Dual	%
Redding	8	2	25.0%	13	1	7.7%	12	1	8.3%	10	0	0.0%	3	1	33.3%
Ridgefield	32	5	15.6%	39	5	12.8%	31	1	3.2%	31	3	9.7%	28	1	3.6%
Rocky Hill	69	9	13.0%	55	13	23.6%	60	9	15.0%	53	5	9.4%	62	3	4.8%
Seymour	97	8	8.2%	89	12	13.5%	71	3	4.2%	61	6	9.8%	70	1	1.4%
Shelton	99	8	8.1%	94	8	8.5%	104	7	6.7%	85	3	3.5%	109	3	2.8%
Simsbury	40	5	12.5%	40	3	7.5%	42	4	9.5%	54	4	7.4%	32	4	12.5%
South Windsor	75	9	12.0%	57	14	24.6%	64	9	14.1%	46	7	15.2%	70	3	4.3%
Southern CT State Univ.	2	1	50.0%	9	2	22.2%	7	2	28.6%	1	0	0.0%	1	0	0.0%
Southington	151	27	17.9%	160	27	16.9%	157	18	11.5%	162	24	14.8%	185	12	6.5%
Stamford	282	40	14.2%	347	44	12.7%	316	34	10.8%	405	49	12.1%	326	33	10.1%
Stonington	101	6	5.9%	110	14	12.7%	114	14	12.3%	98	9	9.2%	95	13	13.7%
Stratford	120	18	15.0%	165	32	19.4%	203	35	17.2%	233	31	13.3%	236	20	8.5%
Suffield	22	1	4.5%	26	0	0.0%	31	0	0.0%	33	4	12.1%	26	1	3.8%
Thomaston	30	1	3.3%	28	3	10.7%	39	2	5.1%	36	1	2.8%	44	1	2.3%
Torrington	345	54	15.7%	354	42	11.9%	345	46	13.3%	300	32	10.7%	252	27	10.7%
Trumbull	58	7	12.1%	50	8	16.0%	57	7	12.3%	64	8	12.5%	41	3	7.3%
UCONN Health	0	0	N/A	0	0	N/A	0	0	N/A	0	0	N/A	3	0	0.0%
UCONN Storrs	29	8	27.6%	29	8	27.6%	20	3	15.0%	16	0	0.0%	15	0	0.0%
Vernon	186	18	9.7%	189	24	12.7%	166	26	15.7%	171	20	11.7%	200	20	10.0%
Wallingford	204	30	14.7%	182	30	16.5%	166	25	15.1%	175	24	13.7%	171	14	8.2%
Waterbury	922	111	12.0%	1,073	126	11.7%	932	117	12.6%	993	124	12.5%	965	105	10.9%
Waterford	71	9	12.7%	82	8	9.8%	53	5	9.4%	47	5	10.6%	48	4	8.3%
Watertown	124	9	7.3%	92	6	6.5%	103	13	12.6%	80	5	6.3%	79	4	5.1%
West Hartford	199	22	11.1%	159	19	11.9%	167	18	10.8%	167	15	9.0%	196	11	5.6%
West Haven	323	54	16.7%	413	47	11.4%	393	67	17.0%	364	46	12.6%	280	23	8.2%
Western CT State Univ.	1	1	100.0%	4	1	25.0%	4	0	0.0%	2	0	0.0%	1	0	0.0%
Weston	18	2	11.1%	16	3	18.8%	10	1	10.0%	14	2	14.3%	12	1	8.3%
Westport	46	7	15.2%	56	7	12.5%	43	8	18.6%	39	5	12.8%	35	1	2.9%
Wethersfield	86	9	10.5%	66	7	10.6%	70	9	12.9%	77	11	14.3%	70	4	5.7%
Willimantic	152	16	10.5%	150	20	13.3%	145	15	10.3%	207	30	14.5%	199	24	12.1%
Wilton	38	5	13.2%	24	2	8.3%	31	4	12.9%	28	0	0.0%	28	0	0.0%
Winchester	60	8	13.3%	91	20	22.0%	88	17	19.3%	109	17	15.6%	87	12	13.8%
Windsor	130	33	25.4%	126	29	23.0%	148	36	24.3%	130	25	19.2%	120	11	9.2%
Windsor Locks	77	18	23.4%	72	8	11.1%	80	6	7.5%	80	20	25.0%	71	10	14.1%
Wolcott	74	4	5.4%	63	4	6.3%	70	8	11.4%	60	3	5.0%	63	6	9.5%
Woodbridge	19	0	0.0%	19	0	0.0%	27	5	18.5%	24	2	8.3%	12	0	0.0%
Yale	5	1	20.0%	7	1	14.3%	9	0	0.0%	1	0	0.0%	5	0	0.0%
Troop A CSP	150	13	8.7%	124	9	7.3%	117	9	7.7%	110	6	5.5%	109	3	2.8%
Troop B CSP	102	14	13.7%	95	7	7.4%	88	9	10.2%	104	9	8.7%	82	5	6.1%
Troop C CSP	178	13	7.3%	166	9	5.4%	199	18	9.0%	139	10	7.2%	203	7	3.4%
Troop D CSP	219	8	3.7%	266	28	10.5%	234	27	11.5%	248	13	5.2%	224	13	5.8%
Troop E CSP	224	20	8.9%	202	17	8.4%	149	24	16.1%	141	6	4.3%	175	7	4.0%
Troop F CSP	92	13	14.1%	96	8	8.3%	93	2	2.2%	121	9	7.4%	91	0	0.0%
Troop G CSP	46	9	19.6%	49	8	16.3%	23	6	26.1%	25	3	12.0%	26	1	3.8%
Troop H CSP	52	6	11.5%	54	3	5.6%	46	6	13.0%	54	3	5.6%	61	1	1.6%
Troop I CSP	75	12	16.0%	99	8	8.1%	78	7	9.0%	53	5	9.4%	57	4	7.0%
Troop K CSP	190	19	10.0%	168	19	11.3%	186	16	8.6%	178	15	8.4%	181	11	6.1%
Troop L CSP	142	10	7.0%	129	9	7.0%	111	17	15.3%	99	8	8.1%	87	3	3.4%
Troop R CSP	0	0	N/A	0	0	N/A	0	0	N/A	0	0	N/A	0	0	N/A
Total CSP	1,470	137	9.3%	1,448	125	8.6%	1,324	141	10.6%	1,272	87	6.8%	1,296	55	4.2%

**Connecticut
IP Dual Arrest Incidents as Percent of Total Family Violence Arrest Incidents**



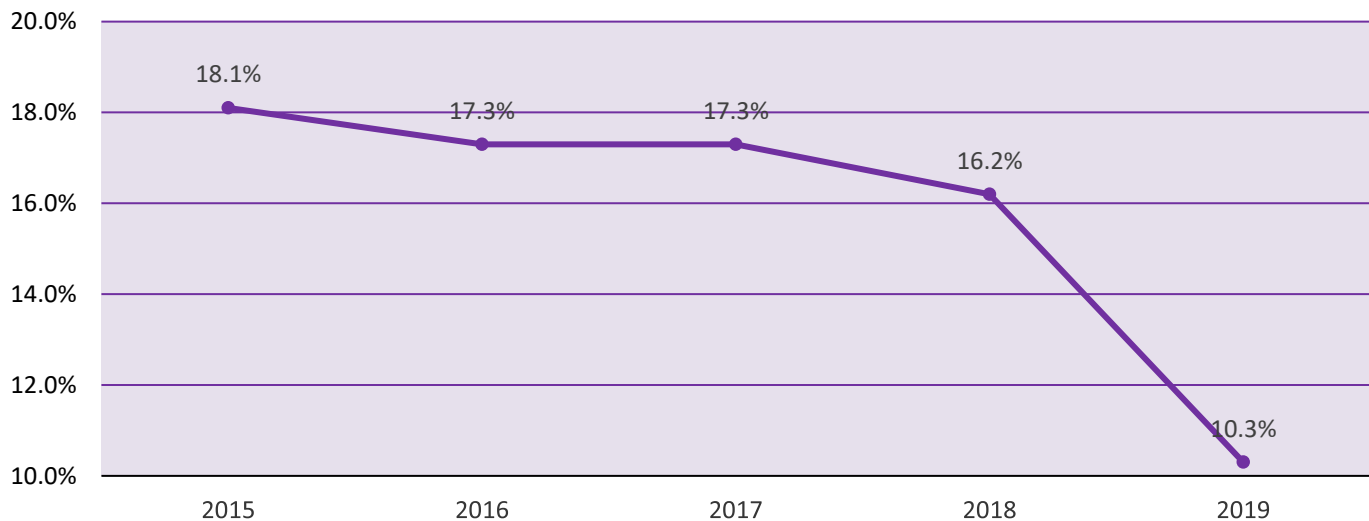
INTIMATE PARTNER ARREST INCIDENTS - INTIMATE PARTNER DUAL ARREST INCIDENTS
CY 2015 - CY 2019

Reporting Agency	2015			2016			2017			2018			2019		
	IP	IP Dual	%	IP	IP Dual	%	IP	IP Dual	%	IP	IP Dual	%	IP	IP Dual	%
Connecticut Total	13,367	2,421	18.1%	13,403	2,323	17.3%	12,739	2,202	17.3%	13,108	2,119	16.2%	12,486	1,281	10.3%
AMTRAK	1	0	0.0%	0	0	N/A	1	0	0.0%	2	0	0.0%	0	0	N/A
Ansonia	72	25	34.7%	79	15	19.0%	67	14	20.9%	100	14	14.0%	95	4	4.2%
Avon	23	3	13.0%	19	2	10.5%	13	1	7.7%	12	1	8.3%	16	3	18.8%
Berlin	43	3	7.0%	42	7	16.7%	35	4	11.4%	38	2	5.3%	30	1	3.3%
Bethel	39	2	5.1%	55	8	14.5%	53	5	9.4%	50	6	12.0%	39	2	5.1%
Bloomfield	89	18	20.2%	93	21	22.6%	84	21	25.0%	78	10	12.8%	76	8	10.5%
Branford	120	22	18.3%	121	17	14.0%	116	10	8.6%	86	14	16.3%	94	1	1.1%
Bridgeport	493	94	19.1%	467	73	15.6%	432	80	18.5%	550	142	25.8%	600	133	22.2%
Bristol	303	73	24.1%	309	68	22.0%	308	64	20.8%	233	43	18.5%	237	13	5.5%
Brookfield	16	2	12.5%	25	5	20.0%	24	7	29.2%	32	4	12.5%	28	3	10.7%
Canton	3	0	0.0%	6	0	0.0%	5	0	0.0%	1	0	0.0%	9	1	11.1%
Central CT State Univ.	0	0	N/A	0	0	N/A	10	3	30.0%	6	2	33.3%	3	0	0.0%
Cheshire	50	10	20.0%	48	9	18.8%	47	10	21.3%	37	9	24.3%	24	3	12.5%
Clinton	74	15	20.3%	59	5	8.5%	55	8	14.5%	47	6	12.8%	42	4	9.5%
Coventry	15	4	26.7%	15	0	0.0%	15	3	20.0%	25	1	4.0%	24	2	8.3%
Cromwell	40	12	30.0%	25	4	16.0%	35	5	14.3%	36	8	22.2%	37	2	5.4%
CT State Capitol Police	0	0	N/A	1	0	0.0%	0	0	N/A	0	0	N/A	0	0	N/A
Danbury	256	52	20.3%	282	67	23.8%	230	44	19.1%	287	51	17.8%	250	27	10.8%
Darien	17	2	11.8%	20	3	15.0%	18	1	5.6%	20	4	20.0%	12	1	8.3%
DEEP	5	1	20.0%	8	0	0.0%	3	0	0.0%	8	2	25.0%	8	0	0.0%
Derby	90	11	12.2%	74	6	8.1%	94	11	11.7%	73	15	20.5%	78	2	2.6%
DMHAS	0	0	N/A	2	0	0.0%	0	0	N/A	0	0	N/A	0	0	N/A
East Hampton	36	4	11.1%	33	2	6.1%	26	2	7.7%	20	3	15.0%	19	1	5.3%
East Hartford	312	59	18.9%	297	52	17.5%	253	30	11.9%	206	35	17.0%	198	13	6.6%
East Haven	159	24	15.1%	156	20	12.8%	182	28	15.4%	175	21	12.0%	166	11	6.6%
East Lyme	0	0	N/A	0	0	N/A	11	0	0.0%	14	1	7.1%	15	1	6.7%
East Windsor	43	6	14.0%	58	6	10.3%	64	8	12.5%	68	10	14.7%	53	2	3.8%
Eastern CT State Univ.	14	2	14.3%	5	1	20.0%	7	2	28.6%	2	1	50.0%	3	0	0.0%
Easton	7	0	0.0%	7	1	14.3%	14	3	21.4%	7	2	28.6%	5	1	20.0%
Enfield	188	30	16.0%	120	31	25.8%	105	22	21.0%	138	14	10.1%	132	11	8.3%
Fairfield	68	9	13.2%	54	5	9.3%	54	6	11.1%	66	9	13.6%	59	6	10.2%
Farmington	38	6	15.8%	33	9	27.3%	31	5	16.1%	48	7	14.6%	31	3	9.7%
Glastonbury	47	6	12.8%	48	9	18.8%	67	8	11.9%	53	3	5.7%	47	4	8.5%
Granby	22	4	18.2%	17	1	5.9%	23	4	17.4%	17	4	23.5%	18	4	22.2%
Greenwich	64	15	23.4%	85	8	9.4%	76	10	13.2%	88	13	14.8%	68	4	5.9%
Groton City	104	24	23.1%	80	22	27.5%	86	19	22.1%	87	22	25.3%	53	3	5.7%
Groton Long Point	0	0	N/A	0	0	N/A	0	0	N/A	0	0	N/A	0	0	N/A
Groton Town	83	12	14.5%	106	11	10.4%	119	16	13.4%	117	10	8.5%	112	7	6.3%
Guilford	41	5	12.2%	47	4	8.5%	40	4	10.0%	27	4	14.8%	28	4	14.3%
Hamden	163	46	28.2%	165	27	16.4%	180	39	21.7%	179	39	21.8%	153	12	7.8%
Hartford	991	157	15.8%	801	155	19.4%	583	123	21.1%	728	183	25.1%	691	125	18.1%
Ledyard	0	0	N/A	25	8	32.0%	25	0	0.0%	21	2	9.5%	10	0	0.0%
Madison	18	2	11.1%	18	5	27.8%	20	6	30.0%	23	3	13.0%	16	1	6.3%
Manchester	401	79	19.7%	312	57	18.3%	387	74	19.1%	427	83	19.4%	386	69	17.9%
Mashantucket Tribal	43	8	18.6%	42	9	21.4%	36	11	30.6%	56	7	12.5%	54	3	5.6%
Meriden	416	76	18.3%	515	94	18.3%	480	85	17.7%	468	79	16.9%	390	40	10.3%
Metro North	0	0	N/A	0	0	N/A	0	0	N/A	1	0	0.0%	0	0	N/A
Middlebury	4	0	0.0%	11	2	18.2%	5	0	0.0%	8	2	25.0%	10	2	20.0%
Middletown	260	61	23.5%	290	61	21.0%	215	42	19.5%	242	43	17.8%	186	25	13.4%
Milford	125	27	21.6%	139	25	18.0%	126	34	27.0%	129	21	16.3%	150	17	11.3%
Mohegan Tribal	41	9	22.0%	39	9	23.1%	48	13	27.1%	41	6	14.6%	32	5	15.6%
Monroe	32	6	18.8%	27	5	18.5%	23	2	8.7%	36	7	19.4%	28	1	3.6%
Naugatuck	133	28	21.1%	129	33	25.6%	116	25	21.6%	105	11	10.5%	103	7	6.8%
New Britain	669	150	22.4%	575	124	21.6%	431	99	23.0%	449	86	19.2%	650	90	13.8%
New Canaan	10	0	0.0%	15	2	13.3%	13	1	7.7%	11	2	18.2%	7	1	14.3%
New Haven	1,301	251	19.3%	1,318	231	17.5%	1,341	218	16.3%	1,289	210	16.3%	1,159	26	2.2%
New London	263	56	21.3%	283	59	20.8%	290	56	19.3%	280	49	17.5%	256	27	10.5%
New Milford	137	18	13.1%	118	14	11.9%	127	16	12.6%	127	11	8.7%	111	9	8.1%
Newington	97	21	21.6%	107	17	15.9%	80	17	21.3%	84	10	11.9%	70	10	14.3%
Newtown	31	3	9.7%	31	5	16.1%	25	1	4.0%	29	2	6.9%	23	0	0.0%
North Branford	36	5	13.9%	32	6	18.8%	35	6	17.1%	16	1	6.3%	36	1	2.8%
North Haven	42	8	19.0%	60	14	23.3%	48	11	22.9%	49	4	8.2%	48	5	10.4%
Norwalk	310	71	22.9%	304	61	20.1%	291	52	17.9%	321	59	18.4%	300	41	13.7%
Norwich	311	33	10.6%	304	37	12.2%	319	39	12.2%	343	37	10.8%	330	19	5.8%
Old Saybrook	26	4	15.4%	32	6	18.8%	31	0	0.0%	44	2	4.5%	47	1	2.1%
Orange	24	5	20.8%	33	3	9.1%	15	1	6.7%	23	5	21.7%	42	3	7.1%
Plainfield	46	8	17.4%	53	3	5.7%	68	14	20.6%	56	7	12.5%	68	6	8.8%
Plainville	116	11	9.5%	128	12	9.4%	119	11	9.2%	94	13	13.8%	101	11	10.9%
Plymouth	62	15	24.2%	64	9	14.1%	55	13	23.6%	48	6	12.5%	44	3	6.8%
Portland	7	2	28.6%	11	5	45.5%	9	2	22.2%	15	2	13.3%	13	4	30.8%
Putnam Municipal	68	3	4.4%	67	10	14.9%	86	17	19.8%	95	7	7.4%	69	1	1.4%

INTIMATE PARTNER ARREST INCIDENTS - INTIMATE PARTNER DUAL ARREST INCIDENTS
CY 2015 - CY 2019

Reporting Agency	2015			2016			2017			2018			2019		
	IP	IP Dual	%	IP	IP Dual	%	IP	IP Dual	%	IP	IP Dual	%	IP	IP Dual	%
Redding	3	2	66.7%	8	1	12.5%	9	1	11.1%	9	0	0.0%	3	1	33.3%
Ridgefield	17	5	29.4%	21	5	23.8%	22	1	4.5%	19	3	15.8%	16	1	6.3%
Rocky Hill	54	9	16.7%	31	13	41.9%	46	9	19.6%	44	5	11.4%	44	3	6.8%
Seymour	71	8	11.3%	68	12	17.6%	51	3	5.9%	52	6	11.5%	48	1	2.1%
Shelton	75	8	10.7%	70	8	11.4%	86	7	8.1%	61	3	4.9%	86	3	3.5%
Simsbury	25	5	20.0%	29	3	10.3%	34	4	11.8%	42	4	9.5%	27	4	14.8%
South Windsor	61	9	14.8%	43	14	32.6%	41	9	22.0%	29	7	24.1%	49	3	6.1%
Southern CT State Univ.	2	1	50.0%	9	2	22.2%	7	2	28.6%	1	0	0.0%	1	0	0.0%
Southington	103	27	26.2%	114	27	23.7%	109	18	16.5%	138	24	17.4%	132	12	9.1%
Stamford	202	40	19.8%	240	44	18.3%	225	34	15.1%	304	49	16.1%	236	33	14.0%
Stonington	82	6	7.3%	84	14	16.7%	87	14	16.1%	70	9	12.9%	74	13	17.6%
Stratford	84	18	21.4%	115	32	27.8%	147	35	23.8%	163	31	19.0%	163	20	12.3%
Suffield	17	1	5.9%	16	0	0.0%	24	0	0.0%	26	4	15.4%	18	1	5.6%
Thomaston	20	1	5.0%	24	3	12.5%	31	2	6.5%	29	1	3.4%	33	1	3.0%
Torrington	283	54	19.1%	290	42	14.5%	283	46	16.3%	238	32	13.4%	208	27	13.0%
Trumbull	41	7	17.1%	40	8	20.0%	39	7	17.9%	52	8	15.4%	30	3	10.0%
UCONN Health	0	0	N/A	0	0	N/A	0	0	N/A	0	0	N/A	3	0	0.0%
UCONN Storrs	27	8	29.6%	28	8	28.6%	19	3	15.8%	16	0	0.0%	15	0	0.0%
Vernon	142	18	12.7%	134	24	17.9%	138	26	18.8%	140	20	14.3%	150	20	13.3%
Wallingford	138	30	21.7%	126	30	23.8%	129	25	19.4%	134	24	17.9%	133	14	10.5%
Waterbury	635	111	17.5%	794	126	15.9%	686	117	17.1%	754	124	16.4%	741	105	14.2%
Waterford	55	9	16.4%	59	8	13.6%	38	5	13.2%	36	5	13.9%	38	4	10.5%
Watertown	80	9	11.3%	55	6	10.9%	73	13	17.8%	60	5	8.3%	61	4	6.6%
West Hartford	149	22	14.8%	123	19	15.4%	130	18	13.8%	127	15	11.8%	140	11	7.9%
West Haven	246	54	22.0%	319	47	14.7%	309	67	21.7%	284	46	16.2%	210	23	11.0%
Western CT State Univ.	1	1	100.0%	4	1	25.0%	4	0	0.0%	2	0	0.0%	1	0	0.0%
Weston	12	2	16.7%	9	3	33.3%	3	1	33.3%	9	2	22.2%	10	1	10.0%
Westport	36	7	19.4%	43	7	16.3%	32	8	25.0%	28	5	17.9%	23	1	4.3%
Wethersfield	67	9	13.4%	52	7	13.5%	49	9	18.4%	57	11	19.3%	56	4	7.1%
Willimantic	115	16	13.9%	117	20	17.1%	118	15	12.7%	170	30	17.6%	155	24	15.5%
Wilton	25	5	20.0%	17	2	11.8%	26	4	15.4%	21	0	0.0%	15	0	0.0%
Winchester	44	8	18.2%	71	20	28.2%	76	17	22.4%	92	17	18.5%	73	12	16.4%
Windsor	96	33	34.4%	93	29	31.2%	109	36	33.0%	87	25	28.7%	75	11	14.7%
Windsor Locks	63	18	28.6%	52	8	15.4%	58	6	10.3%	61	20	32.8%	47	10	21.3%
Wolcott	53	4	7.5%	39	4	10.3%	54	8	14.8%	39	3	7.7%	47	6	12.8%
Woodbridge	9	0	0.0%	13	0	0.0%	21	5	23.8%	17	2	11.8%	6	0	0.0%
Yale	5	1	20.0%	7	1	14.3%	9	0	0.0%	1	0	0.0%	5	0	0.0%
Troop A CSP	91	13	14.3%	94	9	9.6%	77	9	11.7%	88	6	6.8%	77	3	3.9%
Troop B CSP	81	14	17.3%	77	7	9.1%	69	9	13.0%	80	9	11.3%	64	5	7.8%
Troop C CSP	120	13	10.8%	133	9	6.8%	144	18	12.5%	111	10	9.0%	167	7	4.2%
Troop D CSP	152	8	5.3%	191	28	14.7%	188	27	14.4%	205	13	6.3%	179	13	7.3%
Troop E CSP	168	20	11.9%	153	17	11.1%	112	24	21.4%	119	6	5.0%	142	7	4.9%
Troop F CSP	68	13	19.1%	68	8	11.8%	59	2	3.4%	84	9	10.7%	68	0	0.0%
Troop G CSP	41	9	22.0%	44	8	18.2%	22	6	27.3%	25	3	12.0%	24	1	4.2%
Troop H CSP	49	6	12.2%	48	3	6.3%	44	6	13.6%	46	3	6.5%	54	1	1.9%
Troop I CSP	55	12	21.8%	83	8	9.6%	56	7	12.5%	42	5	11.9%	40	4	10.0%
Troop K CSP	149	19	12.8%	119	19	16.0%	137	16	11.7%	129	15	11.6%	140	11	7.9%
Troop L CSP	97	10	10.3%	92	9	9.8%	79	17	21.5%	76	8	10.5%	67	3	4.5%
Troop R CSP	0	0	N/A	0	0	N/A	0	0	N/A	0	0	N/A	0	0	N/A
Total CSP	1,071	137	12.8%	1,102	125	11.3%	987	141	14.3%	1,005	87	8.7%	1,022	55	5.4%

Connecticut
IP Dual Arrest Incidents as Percent Total IP Arrest Incidents

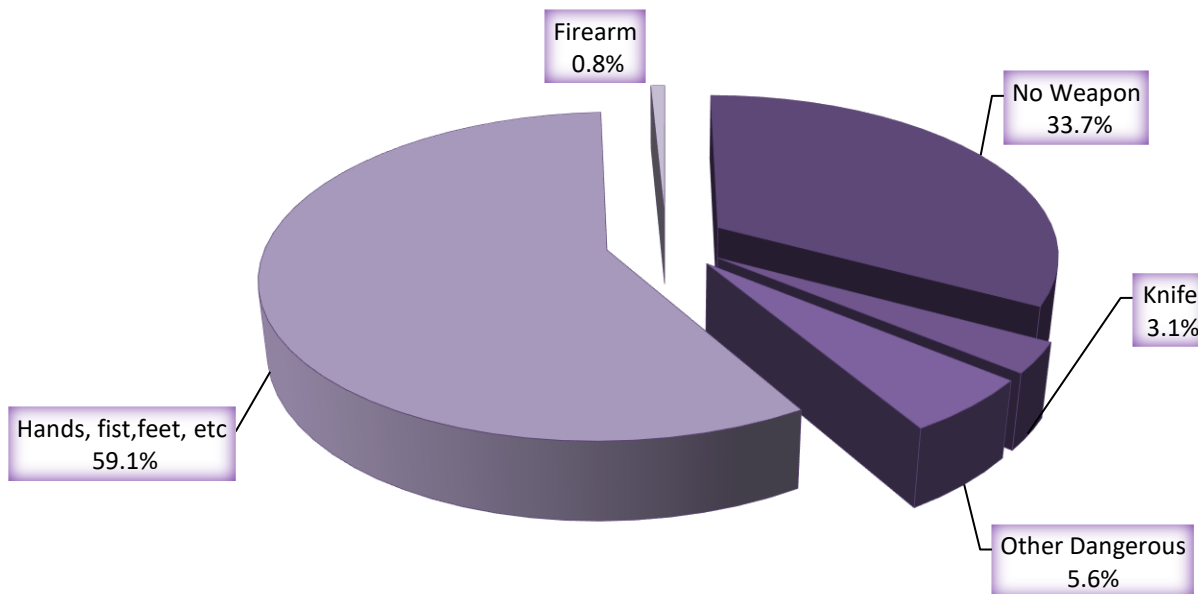


Weapons

In CY 2019, 10,835 or 66.3 percent of total family violence incidents involved a weapon. A weapon is defined as any object, instrument, device or part of the anatomy used in an attack. In an incident involving more than one weapon, all weapons used are counted. When weapons were involved, hands, fist, feet, or other parts of the anatomy were used in larger number of incidents than any other weapon classification, 9,654 or 59.1 percent of total incidents. Persons in a dating relationship were more often the victim in a family violence incident involving hands, fist, feet, or other parts of the anatomy than any other relationship type. Firearms were used as a weapon in 129 incidents, 0.8 percent of total incidents and 1.2 percent of incidents involving a weapon.

Type of Weapon Involved	# Incidents	% Total Incidents (16,331)	Incident Participants by Relationship							
			Total Participants	Spouse	Former Spouse	Persons who have a child in common	Dating Relationship	Presently living or have lived together	Other relative residing in home	Other relative not residing in home
Firearm	129	0.8	177	27	4	12	35	32	46	21
Knife	504	3.1	660	82	17	48	174	113	169	57
Other Dangerous	907	5.6	1,162	138	30	100	298	200	310	86
Hands, Fist, Feet, etc.	9,655	59.1	12,345	1,693	316	893	3,947	1,777	2,827	892
No weapon	5,496	33.7	6,407	878	310	651	1,969	970	1,186	443

**Type of Weapon Involved
Percent of Total Incidents**

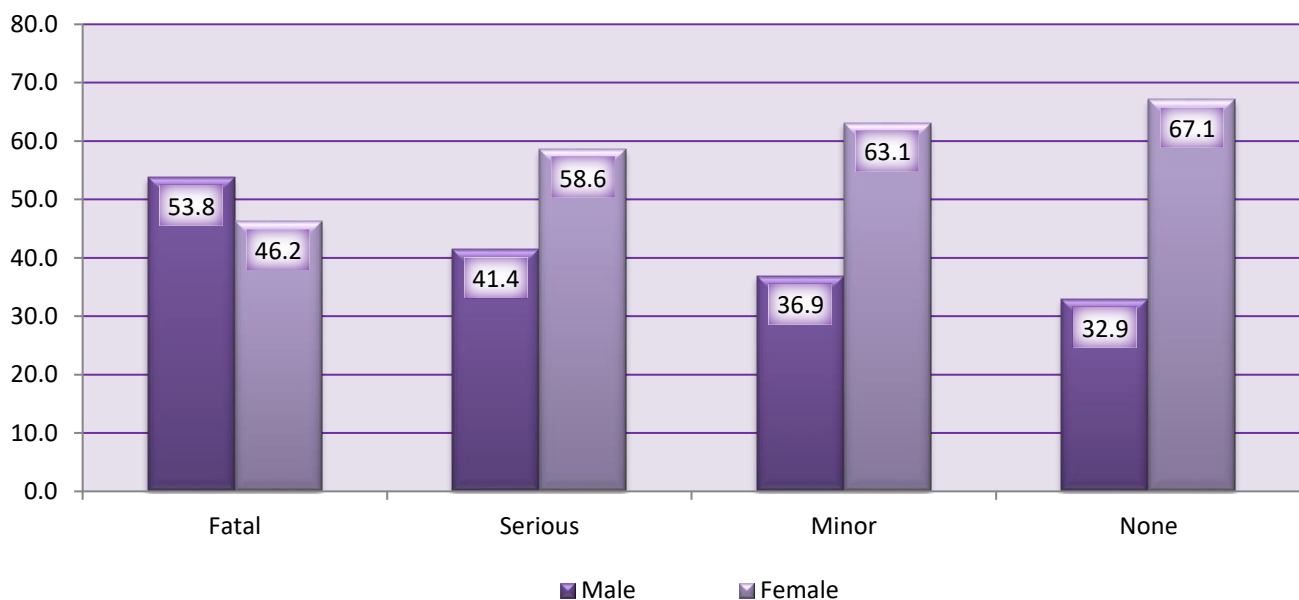


Injury

An injury was sustained by 38.0 percent of family violence victims, with minor injury being the most common injury. An injury is classified as minor when the victim does not suffer obvious, severe or aggravated bodily injury involving apparent broken bones, loss of teeth, possible internal injury, severe laceration, or loss of consciousness. Conversely, an injury is classified as serious when the victim does suffer obvious, severe or aggravated bodily injury involving apparent broken bones, loss of teeth, possible internal injury, severe laceration, or loss of consciousness.

Injury Type	Total Victims	Relationship						
		Spouse	Former Spouse	Persons who have a child in common	Dating Relationship	Presently living or have lived together	Other relative residing in home	Other relative <i>not</i> residing in home
Fatal	26	6	2	1	3	5	6	3
Male	14	3	0	0	0	4	5	2
Female	12	3	2	1	3	1	1	1
Serious	203	23	4	15	78	33	36	14
Male	84	6	3	6	27	14	22	6
Female	119	17	1	9	51	19	14	8
Minor	6,985	949	169	500	2,450	1,031	1,406	480
Male	2,575	321	66	149	787	394	649	209
Female	4,410	628	103	351	1,663	637	757	271
None	12,632	1,717	480	1,136	3,723	1,718	2,861	997
Male	4,159	453	130	314	1,071	616	1,165	410
Female	8,473	1,264	350	822	2,652	1,102	1,696	587

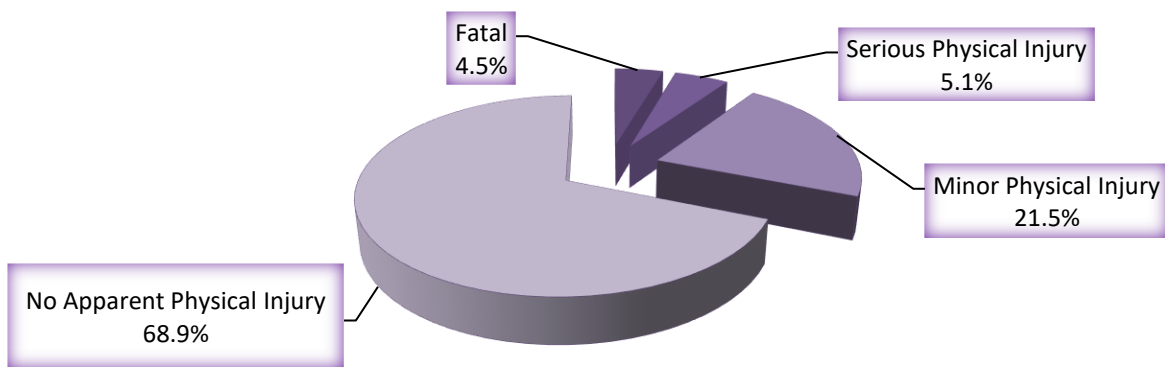
Percent Injury Type by Gender



Injury - Weapon Type

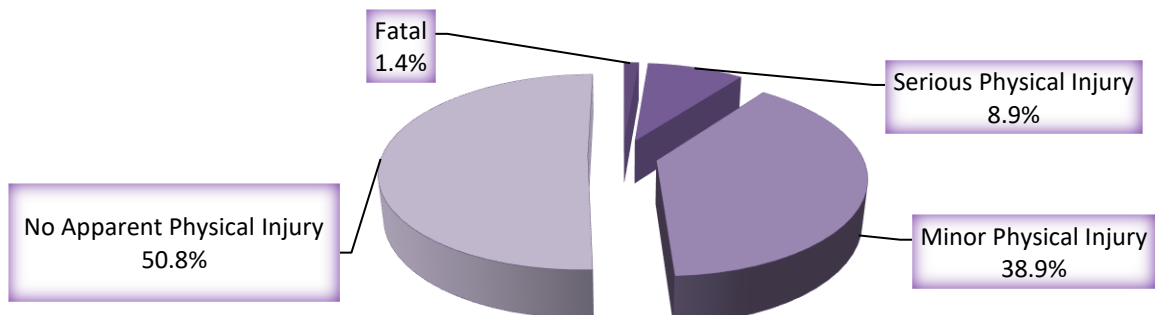
Firearm								
Injury	Total	Spouse	Former Spouse	Persons who have a child in common	Dating Relationship	Presently living or have lived together	Other relative residing in home	Other relative not residing in home
Fatal	8	2	2	0	1	2	1	0
Serious Physical	9	0	0	0	3	2	2	2
Minor Physical	38	4	0	4	11	7	6	6
No Apparent	122	21	2	8	20	21	37	13
Total	177	27	4	12	35	32	46	21

Injury Type - Incidents Involving Firearm



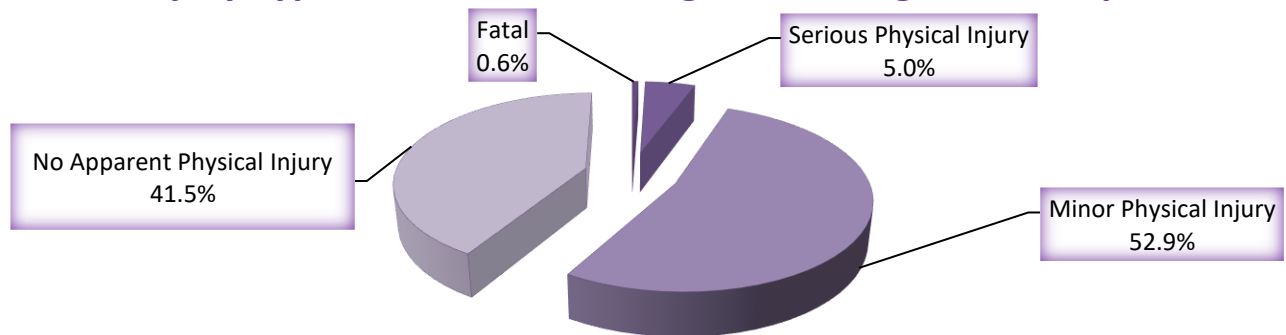
Knife								
Injury	Total	Spouse	Former Spouse	Persons who have a child in common	Dating Relationship	Presently living or have lived together	Other relative residing in home	Other relative not residing in home
Fatal	9	2	0	0	2	1	3	1
Serious Physical	59	4	1	4	24	6	16	4
Minor Physical	257	36	6	19	92	48	43	13
No Apparent	335	40	10	25	56	58	107	39
Total	660	82	17	48	174	113	169	57

Injury Type - Incidents Involving Knife



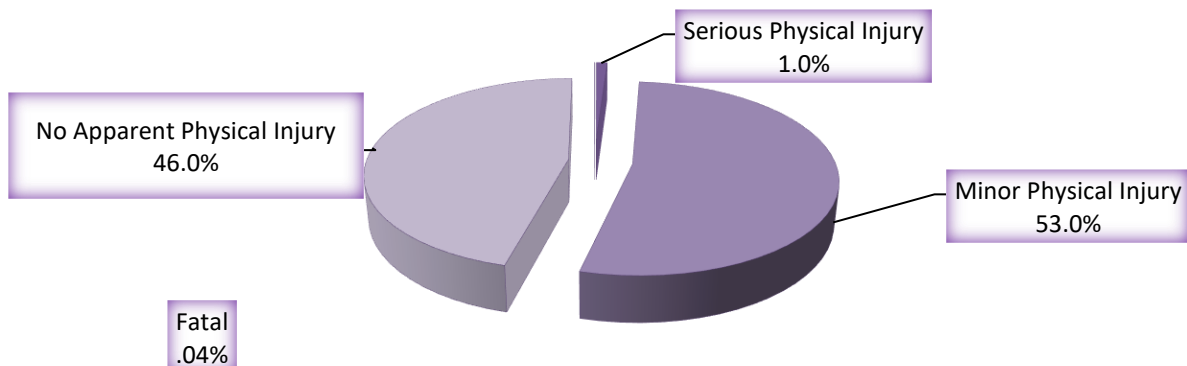
Other Dangerous Weapon								
Injury	Total	Spouse	Former Spouse	Persons who have a child in common	Dating Relationship	Presently living or have lived together	Other relative residing in home	Other relative not residing in home
Fatal	7	3	0	1	0	0	1	2
Serious Physical	58	7	0	5	18	11	14	3
Minor Physical	615	74	11	48	181	101	153	47
No Apparent	482	54	19	46	99	88	142	34
Total	1,162	138	30	100	298	200	310	86

Injury Type - Incidents Involving Other Dangerous Weapons



Hands, Fists, Feet, etc.								
Injury	Total	Spouse	Former Spouse	Persons who have a child in common	Dating Relationship	Presently living or have lived together	Other relative residing in home	Other relative not residing in home
Fatal	5	0	1	0	1	2	1	0
Serious Physical	126	16	4	12	46	21	18	9
Minor Physical	6,539	889	163	466	2,314	959	1,308	440
No Apparent	5,675	788	148	415	1,586	795	1,500	443
Total	12,345	1,693	316	893	3,947	1,777	2,827	892

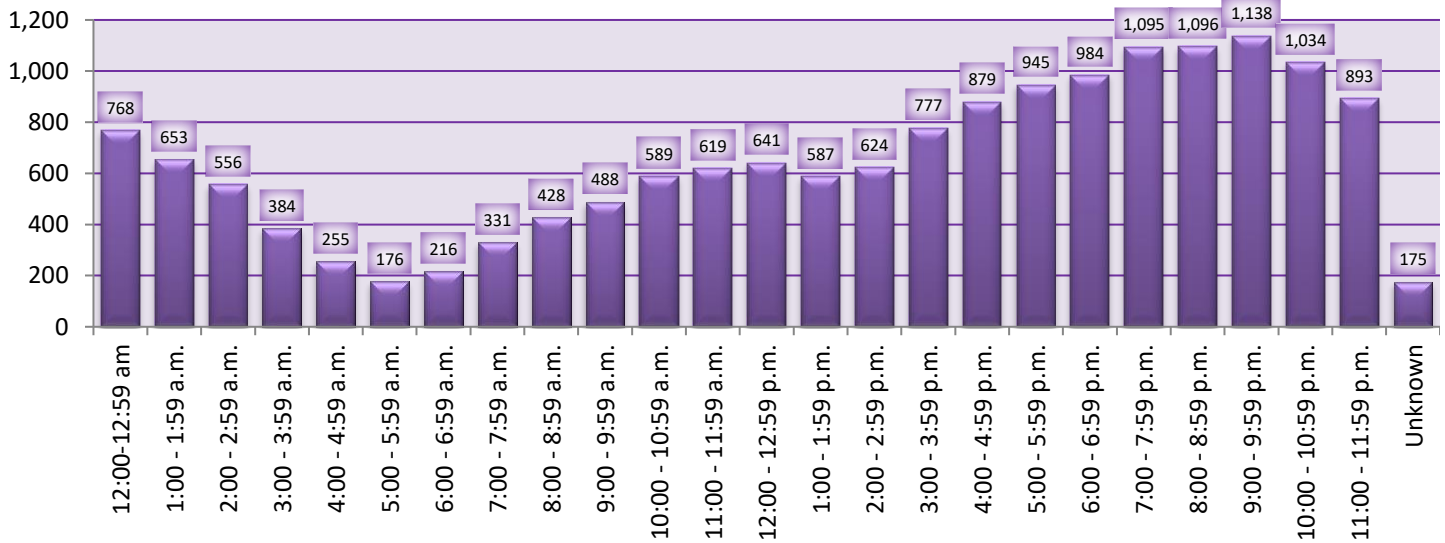
Injury Type - Incidents Involving Hands, Fists, Feet, etc.



Total Incidents/Total Offenses - Time of Day

Time of Day	Total Incidents	Total Offenses	Homicide	Assault	Kidnapping	Sexual Assault	Strangulation	Stalking	Violation Court Order	Threatening	Risk of Injury	Breach/Disorderly	Other
12:00-12:59 am	768	1,324	1	345	1	2	44	2	150	49	35	596	99
1:00-1:59 am	653	1,085	3	302	1	3	32	5	122	57	18	481	61
2:00-2:59 am	556	966	1	297	1	4	37	0	101	34	18	414	59
3:00-3:59 am	384	640	1	193	0	0	27	2	66	25	2	290	34
4:00-4:59 am	255	438	2	124	0	0	13	1	35	21	2	214	26
5:00-5:59 am	176	293	0	86	0	1	8	0	32	19	7	127	13
6:00-6:59 am	216	397	0	99	0	1	9	2	52	21	8	174	31
7:00-7:59 am	331	549	0	117	1	3	17	2	64	29	11	263	42
8:00-8:59 am	428	712	3	162	0	1	14	4	97	54	16	320	41
9:00-9:59 am	488	794	1	179	1	5	24	4	107	43	16	364	50
10:00-10:59 am	589	932	1	219	1	4	38	8	116	51	12	416	66
11:00-11:59 am	619	1,018	1	254	1	5	20	4	137	61	16	452	67
12:00-12:59 pm	641	1,020	0	212	1	2	22	6	143	62	23	473	76
1:00-1:59 pm	587	962	0	235	1	3	19	2	118	57	20	438	69
2:00-2:59 pm	624	1,008	0	241	0	2	24	3	145	66	16	450	61
3:00-3:59 pm	777	1,274	1	279	0	3	27	5	189	89	30	568	83
4:00-4:59 pm	879	1,496	1	354	2	4	32	2	192	117	44	662	86
5:00-5:59 pm	945	1,560	1	366	1	2	33	4	213	98	35	719	88
6:00-6:59 pm	984	1,593	1	365	2	3	36	6	211	97	33	744	95
7:00-7:59 pm	1,095	1,818	2	390	1	6	35	8	237	106	44	895	94
8:00-8:59 pm	1,096	1,767	1	426	1	6	42	11	219	117	46	807	91
9:00-9:59 pm	1,138	1,909	3	491	2	6	38	10	186	105	51	919	98
10:00-10:59 pm	1,034	1,743	1	471	0	2	49	5	162	97	41	811	104
11:00-11:59 pm	893	1,461	1	412	1	2	35	6	146	62	38	681	77
Unknown	175	287	0	67	0	3	8	4	49	16	7	110	23
TOTAL	16,331	27,046	26	6,686	19	73	683	106	3,289	1,553	589	12,388	1,634

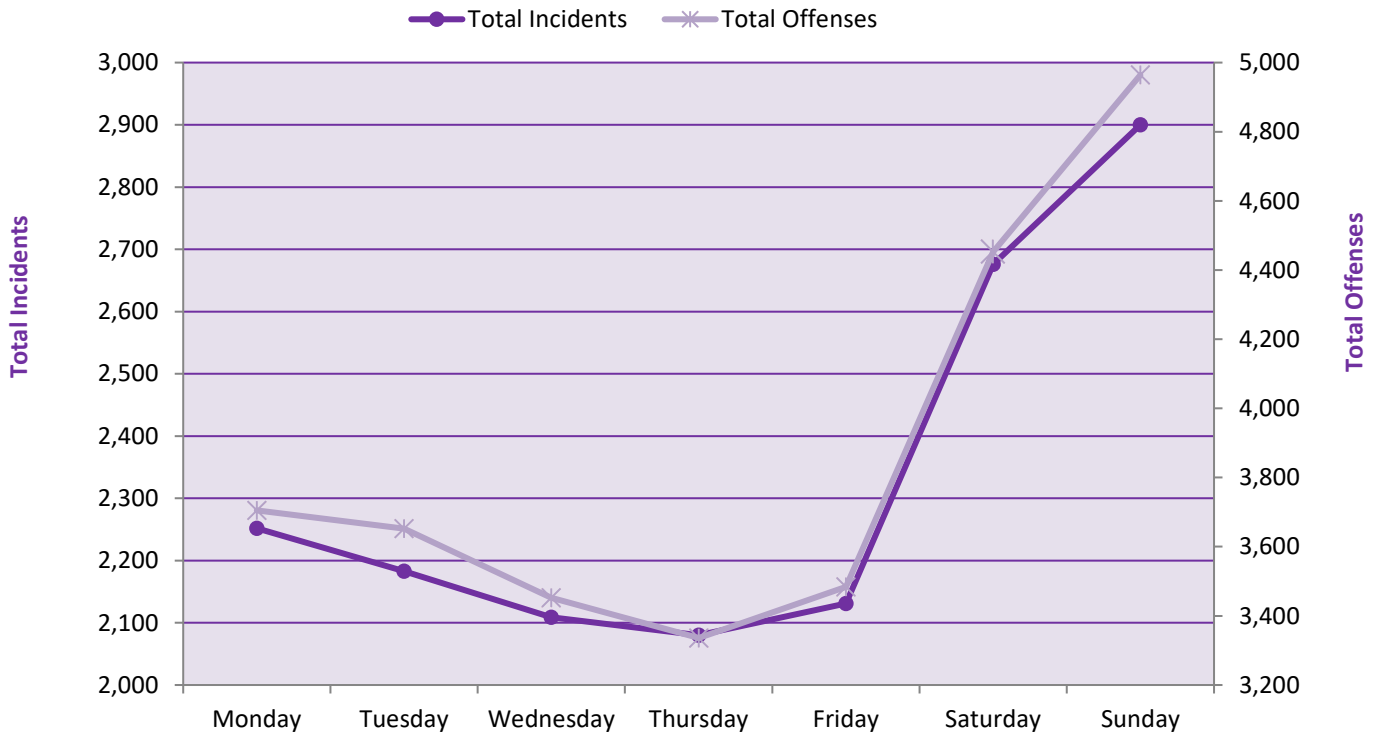
Total Incidents - Time of Day



Total Incidents/Total Offenses - Day of Week

Day of Week	Total Incidents	Total Offenses	Homicide	Assault	Kidnapping	Sexual Assault	Strangulation	Stalking	Violation Court Order	Threatening	Risk of Injury	Breach/Disorderly	Other
Monday	2,252	3,705	8	878	2	12	80	22	466	201	84	1,739	213
Tuesday	2,183	3,652	3	899	2	15	95	16	478	236	94	1,589	225
Wednesday	2,109	3,452	6	840	4	8	88	12	429	188	90	1,586	201
Thursday	2,080	3,336	2	816	2	8	71	15	473	210	47	1,509	183
Friday	2,131	3,484	1	863	2	13	90	12	480	195	60	1,552	216
Saturday	2,676	4,453	3	1,107	3	7	118	9	510	250	87	2,099	260
Sunday	2,900	4,964	3	1,283	4	10	141	20	453	273	127	2,314	336
TOTAL	16,331	27,046	26	6,686	19	73	683	106	3,289	1,553	589	12,388	1,634

Total Incidents/Offenses - Day of Week

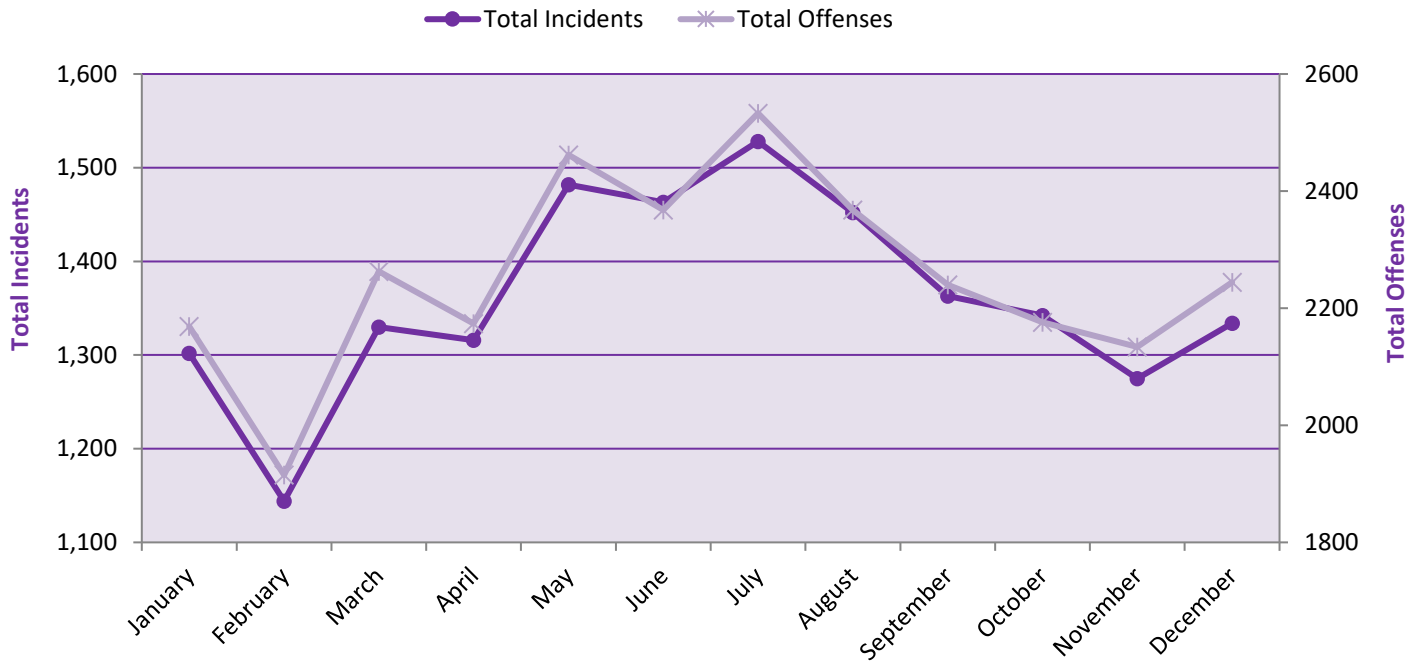


During CY 2019, the most frequent day of family violence incidents was Sunday (2,900) followed by Saturday (2,676). Historically, most family violence incidents occur on either Sunday or Saturday. During CY 2019, 34.1 percent of family violence incidents occurred on these two days.

Total Incidents/Total Offenses -Month of Year

Month	Total Incidents	Total Offenses	Homicide	Assault	Kidnapping	Sexual Assault	Strangulation	Stalking	Violation Court Order	Threatening	Risk of Injury	Breach/Disorderly	Other
January	1,302	2,169	2	550	4	5	58	15	260	129	47	982	117
February	1,144	1,915	2	511	1	6	47	5	226	119	40	833	125
March	1,330	2,263	2	516	1	3	67	9	271	148	48	1,046	152
April	1,316	2,174	2	567	1	8	56	4	263	137	36	969	131
May	1,482	2,462	3	642	2	8	63	11	294	135	59	1,098	147
June	1,463	2,368	1	599	2	2	64	11	305	122	50	1,078	134
July	1,528	2,533	2	589	1	5	66	13	296	137	78	1,179	167
August	1,452	2,368	2	580	0	12	47	7	306	144	49	1,086	135
September	1,363	2,240	1	549	3	8	58	11	244	121	57	1,048	140
October	1,342	2,176	1	510	0	4	54	8	286	124	37	1,015	137
November	1,275	2,134	4	526	3	8	49	5	261	106	42	1,015	115
December	1,334	2,244	4	547	1	4	54	7	277	131	46	1,039	134
TOTAL	16,331	27,046	26	6,686	19	73	683	106	3,289	1,553	589	12,388	1,634

Total Incidents/Offenses - Month of Year

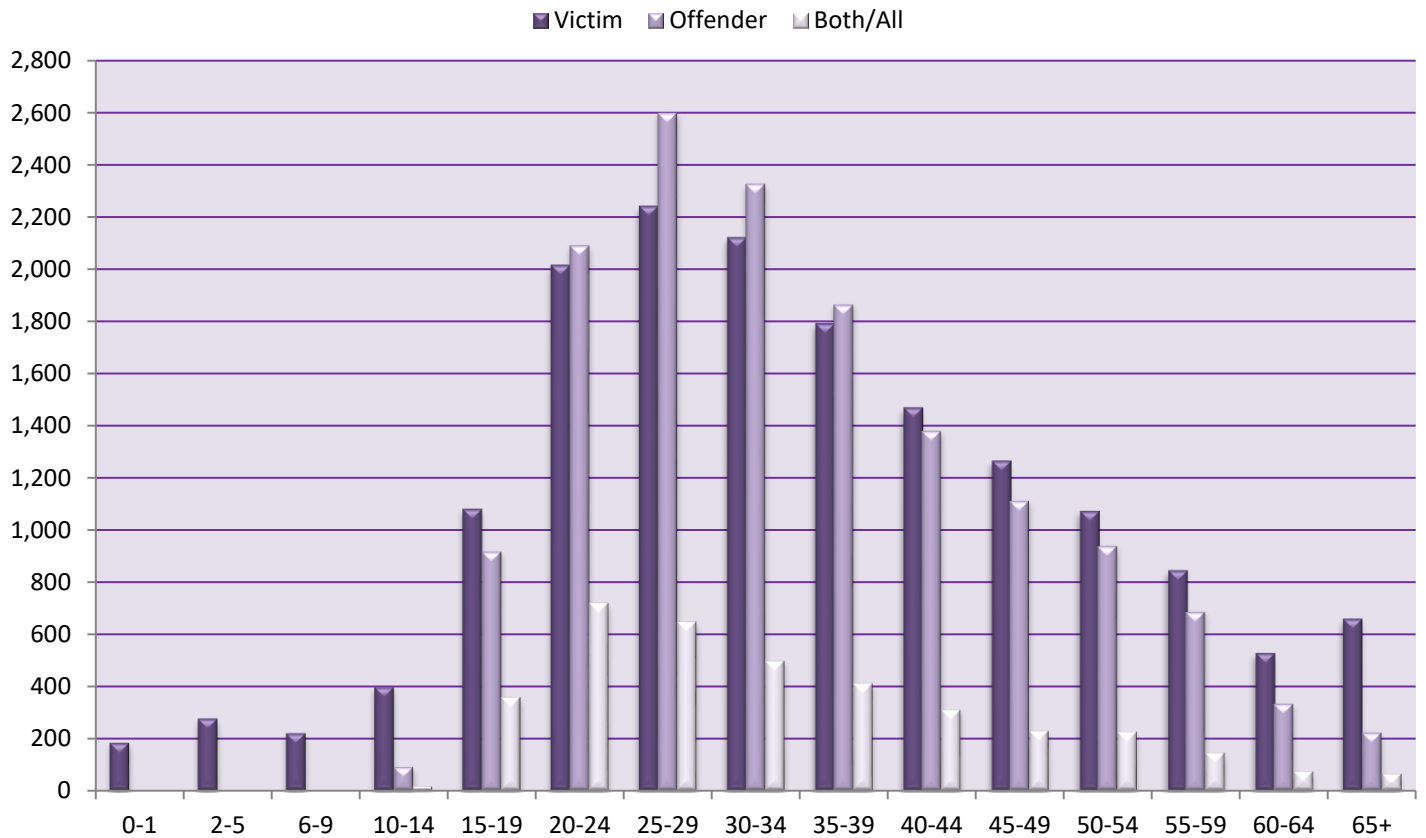


The most frequent month of family violence occurrences during CY 2019 was July (1,528). Warm weather months typically have the most family violence occurrences, with the specific month varying from year to year.

Participants – Age Cohort

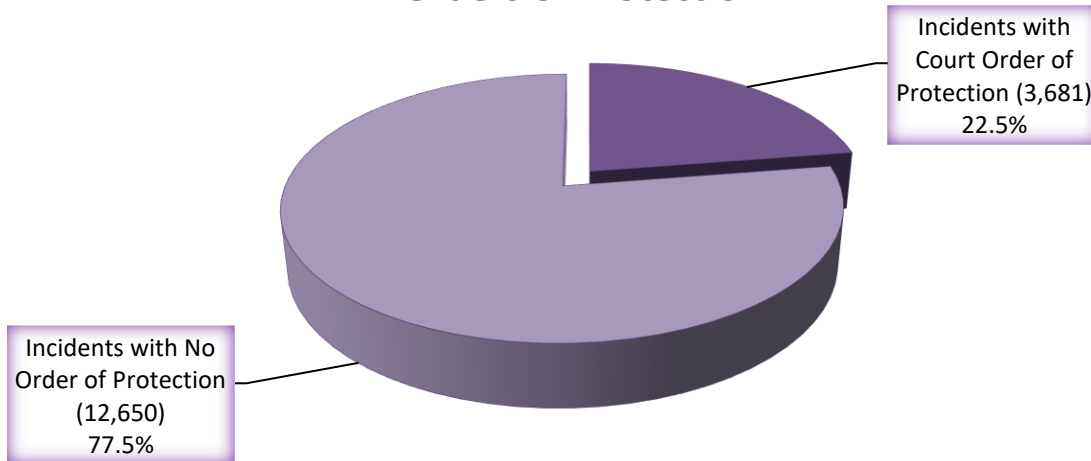
Age	Victim	% Total Victims	Offender	% Total Offenders	Both/All Arrested	% Both/All Arrested	Total Participants	% Total Participants
0-1	183	1.1	0	0.0	0	0.0	183	0.5
2-5	276	1.7	0	0.0	0	0.0	276	0.8
6-9	220	1.4	0	0.0	0	0.0	220	0.6
10-14	397	2.5	91	0.6	16	0.4	504	1.5
15-19	1,080	6.7	923	6.3	358	9.7	2,361	6.9
20-24	2,014	12.5	2,094	14.3	718	19.4	4,826	14.0
25-29	2,240	13.9	2,601	17.8	647	17.5	5,488	15.9
30-34	2,119	13.1	2,329	16.0	497	13.5	4,945	14.4
35-39	1,790	11.1	1,867	12.8	411	11.1	4,068	11.8
40-44	1,468	9.1	1,384	9.5	310	8.4	3,162	9.2
45-49	1,264	7.8	1,117	7.7	229	6.2	2,610	7.6
50-54	1,071	6.6	943	6.5	226	6.1	2,240	6.5
55-59	844	5.2	692	4.7	145	3.9	1,681	4.9
60-64	527	3.3	336	2.3	73	2.0	936	2.7
65+	659	4.1	224	1.5	64	1.7	947	2.7
Total	16,152	100.0	14,601	100.0	3,694	100.0	34,447	100.0

Participants - Age Cohort



Orders of Protection

Orders of Protection



Order Type	Order Status		Total
	Active	Expired	
Protective Order	3,041	59	3,100
Ex-Parte Restraining Order	126	5	131
Restraining Order after Hearing	224	5	229
Standing Criminal Protective Order	205	1	206
Foreign Orders	14	1	15
Conditions of Release	0	0	1,585

In 77.5 percent of family violence incidents there was no court order of protection in place. Conditions of Release are not considered a court order of protection. Conditions of Release for family violence are set by Law Enforcement or a Bail Commissioner upon release from custody and remains in effect until arraignment.

The table below shows offenses and number of incidents containing those offenses by type of protective order. During CY 2019, the most common offense associated with a protective order was violation court order followed by breach of peace/disorderly conduct and assault.

Offenses Recorded in Incidents Containing Active and Expired Orders of Protection – Number of Incidents										
Offense	Protective Order		Ex-Parte Restraining Order		Restraining Order after Hearing		Standing Criminal Protective Order		Foreign Orders	
	Active	Expired	Active	Expired	Active	Expired	Active	Expired	Active	Expired
Homicide	0	0	0	0	0	0	0	0	0	0
Assault	486	27	11	2	15	2	24	0	1	0
Kidnapping	4	0	0	0	1	0	0	0	0	0
Sexual Assault	2	1	0	0	1	0	1	0	0	0
Strangulation	56	2	1	0	4	2	0	1	0	0
Stalking	28	1	3	0	1	0	1	0	1	0
Viol. Court Order	2,541	1	102	0	200	0	187	0	12	0
Threatening	167	9	12	0	13	1	4	0	1	0
Risk of Injury	37	1	0	0	1	1	3	0	1	0
Breach/Disorderly	825	38	35	3	36	3	47	1	4	1
Other	245	6	8	1	21	1	16	0	3	0

Several victim characteristics, while not consistent across all studies, have been associated with renewed abuse after placement of the initial protection order. These include socioeconomic status, presence of biological children with the abuser, race/ethnicity, and prior drug use by the victim.^{1,2,3} Mears³ and Carlson *et al.*² found that the socioeconomic status of the victim is related to increased risk of renewed abuse after a protection order has been placed. Women of very low versus low/medium socioeconomic status experience a significantly lesser decline in reported violence after a restraining order² suggesting that they are at overall higher risk of re-victimization.

The presence of biological children between the victim and defendant may be another important factor to consider. Carlson *et al.*² found that the presence of children increases the odds of reporting re-abuse by a factor of 4.5 in relationships lasting less than five years. Other investigators found that, although the overall abuse risk is not higher, women with children are more likely to experience violence and more likely to be threatened or have property damage.¹

Race of the victim has also been identified as a significant factor in renewed abuse. Black women are at an elevated risk of renewed abuse after legal intervention (PO or arrest of partner for DV incident).^{2,3} More specifically, Mears reported a relative risk of re-abuse of for black women when compared with white women (risk among Hispanics was not higher relative to that among whites).³ Drug use by the victim is also associated with increased re-victimization after legal intervention.³

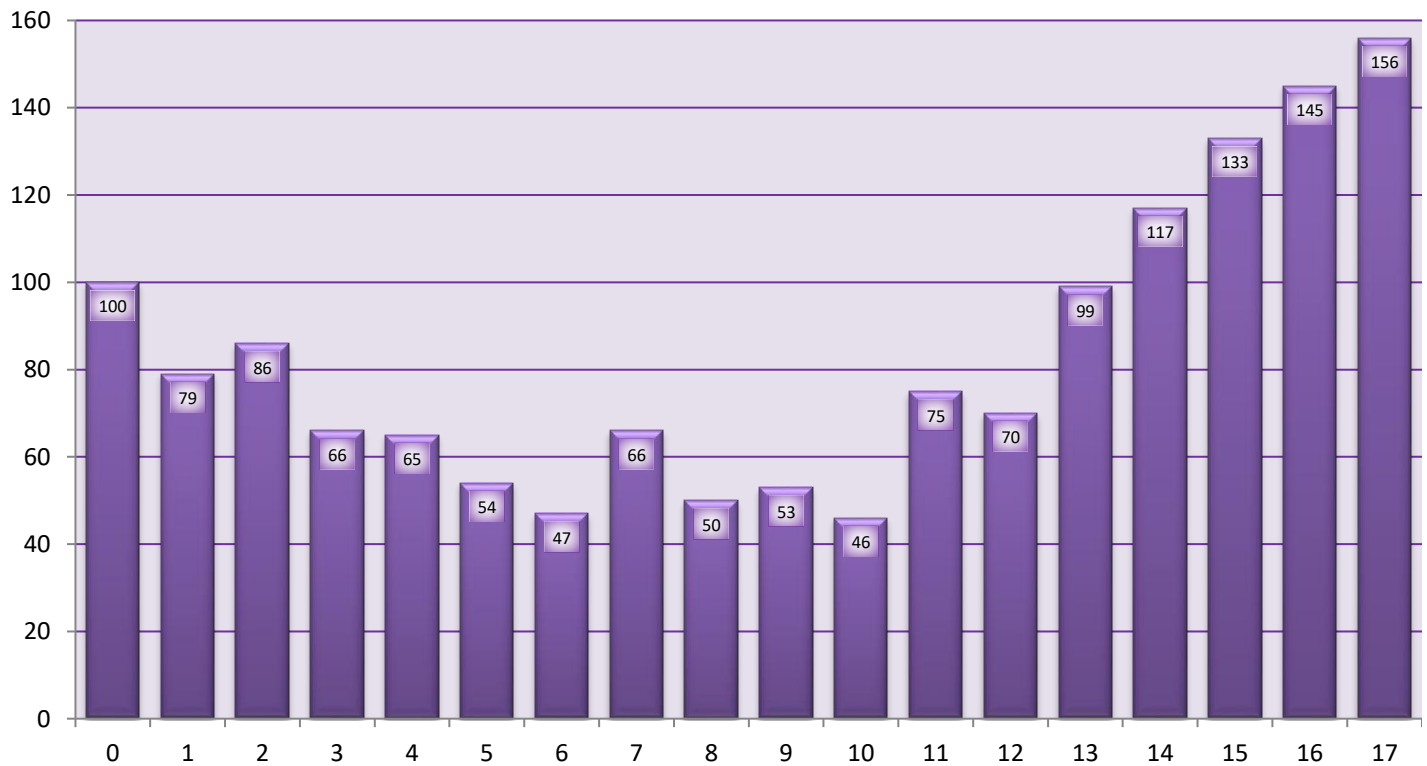
Several perpetrator characteristics may predict renewed abuse after initiation of a protection order. These include a history of violence or criminal acts,^{1,4,5,6} being male,⁵ youthful age,⁶ less than full-time employment,⁴ substance abuse,^{4,5} and other mental health contact.⁵ Overall, a violent or criminal history is the characteristic most frequently associated with protection order violation. In a limited study by Chaudhuri and Daly,⁴ men with criminal histories all violated protection orders. In addition, the offender's criminal history, including alcohol and drug convictions, has been associated with placement of protection orders⁷ and with continued violence afterward.^{4,5,6}

-
1. Harrell A, Smith BE: *Effects of restraining orders on domestic violence victims*, in *Do Arrests and Restraining Orders Work?* Edited by Buzawa ES, Buzawa CG. Thousand Oaks, CA: Sage Publications, 1996, pp 214–42
 2. Carlson MJ, Harris SD, Holden GW: *Protective orders and domestic violence: risk factors for re-abuse*. *J Fam Violence* 14:205–26, 1999
 3. Mears DP, Carlson MJ, Holden GW, *et al*: *Reducing domestic violence revictimization: the effects of individual and contextual factors and type of legal intervention*. *J Interpers Violence* 16:1260–83, 2001
 4. Chaudhuri M, Daly K: *Do restraining orders help?—battered women's experience with male violence and legal process*, in *Domestic Violence: The Changing Criminal Justice Response*. Edited by Buzawa ES, Buzawa CG. Westport, CT: Auburn House, 1992, pp 227–52
 5. Meloy JR, Cowett PY, Parker SB, *et al*: *Domestic protection orders and the prediction of subsequent criminality and violence toward protectees*. *Psychotherapy* 34:447–58, 1997
 6. Klein AR: *Re-abuse in a population of court-restrained male batterers: why restraining orders don't work*, in *Do Arrests and Restraining Orders Work?* Edited by Buzawa ES, Buzawa CG. Thousand Oaks, CA: Sage Publications, 1996, pp 192–213
 7. Isaac NE, Cochran D, Brown ME, *et al*: *Men who batter: profile from a restraining order database*. *Arch Fam Med* 3:50–4, 1994

Children Involved Under 18 Years Old

Age	Total Incidents	Total Offenses	Homicide	Assault	Kidnapping	Sexual Assault	Strangulation	Stalking	Violation Court Order	Threatening	Risk of Injury	Breach/Disorderly	Other
0	100	113	0	17	0	0	1	0	5	3	72	12	3
1	79	87	0	7	0	0	0	0	9	2	57	12	0
2	86	103	1	14	0	0	1	0	3	5	66	11	2
3	66	77	0	10	0	0	1	0	4	4	47	11	0
4	65	75	0	11	0	0	1	0	10	1	37	13	2
5	54	73	0	22	0	0	1	0	4	3	27	14	2
6	47	51	0	8	0	1	1	0	3	1	35	2	0
7	66	83	0	12	0	3	2	0	12	3	32	16	3
8	50	58	0	15	0	1	1	0	5	1	27	6	2
9	53	78	0	14	0	2	0	0	4	9	28	17	4
10	46	51	0	11	0	1	0	0	4	1	19	15	0
11	75	85	0	20	0	0	1	0	6	4	25	29	0
12	70	96	0	18	0	0	1	0	3	7	25	41	1
13	99	129	0	32	0	5	1	0	3	7	26	49	6
14	117	161	0	42	0	4	0	0	11	10	25	64	5
15	133	185	1	53	0	4	3	0	4	14	26	76	4
16	145	206	1	66	0	2	4	0	10	12	9	95	7
17	156	208	0	69	0	0	3	0	8	12	5	103	8
TOTAL	1,507	1,919	3	441	0	23	22	0	108	99	588	586	49

Total Incidents - Children Involved Under 18 Years Old



FAMILY VIOLENCE ARREST INCIDENTS - REPORTING AGENCY
CY 2010 - CY 2019

Reporting Agency	2010	2011	2012	2013	2014	2015	2016	2017	2018	2019	# Chg 2018-2019	% Chg 2018-2019
Connecticut Total	21,133	20,638	19,963	18,451	17,750	17,818	17,748	16,876	17,130	16,331	-799	-4.7%
AMTRAK	0	0	0	0	0	1	0	1	2	0	-2	-100.0%
Ansonia	155	140	137	128	117	100	113	108	139	124	-15	-10.8%
Avon	45	48	41	36	48	29	25	20	16	26	10	62.5%
Berlin	69	69	56	44	35	56	58	43	44	42	-2	-4.5%
Bethel	66	61	52	73	72	55	74	65	67	60	-7	-10.4%
Bloomfield	145	164	152	128	123	131	138	121	128	124	-4	-3.1%
Branford	181	154	176	170	158	156	157	152	118	139	21	17.8%
Bridgeport	821	712	770	749	599	626	616	603	748	810	62	8.3%
Bristol	431	446	443	360	399	391	429	415	311	294	-17	-5.5%
Brookfield	38	36	32	24	18	29	37	31	44	38	-6	-13.6%
Canton	23	27	34	20	8	5	6	7	3	9	6	200.0%
Central CT State University	4	2	1	4	2	0	0	10	6	3	-3	-50.0%
Cheshire	104	86	106	63	72	90	78	86	61	42	-19	-31.1%
Clinton	105	97	85	102	89	91	77	73	64	69	5	7.8%
Coventry	32	30	41	38	18	17	18	20	37	33	-4	-10.8%
Cromwell	47	78	58	62	55	56	42	40	43	47	4	9.3%
CT State Capitol Police	0	0	0	0	0	0	1	0	0	0	0	N/A
Danbury	374	383	308	353	317	343	355	329	356	310	-46	-12.9%
Darien	41	35	24	38	40	24	32	25	28	21	-7	-25.0%
DEEP	2	3	5	2	8	5	9	4	8	9	1	12.5%
Derby	76	88	65	95	104	120	106	132	103	98	-5	-4.9%
DMHAS	0	1	0	1	2	1	2	0	0	1	1	N/A
East Hampton	62	42	41	40	60	48	43	38	26	30	4	15.4%
East Hartford	433	445	401	406	431	393	378	319	256	257	1	0.4%
East Haven	293	248	193	192	229	223	227	249	264	230	-34	-12.9%
East Lyme	0	0	0	0	0	0	0	13	17	17	0	0.0%
East Windsor	92	88	69	93	85	62	71	78	92	68	-24	-26.1%
Eastern CT State University	7	4	9	8	8	15	5	7	2	3	1	50.0%
Easton	18	29	21	13	19	10	10	21	10	8	-2	-20.0%
Enfield	377	346	333	286	296	250	165	148	175	183	8	4.6%
Fairfield	107	114	168	131	107	87	72	77	101	75	-26	-25.7%
Farmington	112	119	80	72	69	48	56	44	57	41	-16	-28.1%
Glastonbury	110	127	106	100	71	87	79	101	84	77	-7	-8.3%
Granby	37	32	29	34	27	29	26	29	21	24	3	14.3%
Greenwich	128	146	123	94	95	87	113	99	110	78	-32	-29.1%
Groton City	116	114	74	113	119	121	102	93	102	75	-27	-26.5%
Groton Long Point	1	1	1	0	1	0	0	0	0	0	0	N/A
Groton Town	139	166	128	136	123	110	139	147	135	130	-5	-3.7%
Guilford	95	66	67	56	59	63	75	61	40	36	-4	-10.0%
Hamden	194	215	208	223	216	226	226	247	234	207	-27	-11.5%
Hartford	1,859	1,858	1,948	1,217	942	1,244	1,013	731	925	893	-32	-3.5%
Ledyard	0	0	0	0	0	0	37	36	26	15	-11	-42.3%
Madison	54	64	46	45	36	25	25	30	32	21	-11	-34.4%
Manchester	623	609	541	518	500	494	393	506	533	491	-42	-7.9%
Mashantucket Tribal	0	0	0	0	13	48	45	48	71	60	-11	-15.5%
Meriden	466	565	485	526	500	531	639	630	590	485	-105	-17.8%
Metro North	0	0	2	1	1	0	0	1	1	0	-1	-100.0%
Middlebury	14	10	10	10	17	8	13	9	10	14	4	40.0%
Middletown	304	321	330	333	382	326	366	275	303	233	-70	-23.1%
Milford	178	221	218	217	191	170	181	183	182	203	21	11.5%
Mohegan Tribal	0	0	0	0	20	44	43	55	44	38	-6	-13.6%
Monroe	47	62	54	29	37	44	36	31	50	38	-12	-24.0%
Naugatuck	265	249	239	240	212	205	177	163	144	143	-1	-0.7%
New Britain	997	831	746	703	773	839	727	554	552	782	230	41.7%
New Canaan	29	39	40	16	25	15	25	18	16	13	-3	-18.8%
New Haven	1,373	1,342	1,396	1,714	1,606	1,793	1,769	1,792	1,783	1,561	-222	-12.5%
New London	453	506	422	357	359	339	356	340	332	305	-27	-8.1%

FAMILY VIOLENCE ARREST INCIDENTS - REPORTING AGENCY
CY 2010 - CY 2019

Reporting Agency	2010	2011	2012	2013	2014	2015	2016	2017	2018	2019	# Chg 2018-2019	% Chg 2018-2019
New Milford	159	154	160	158	190	162	148	159	155	150	-5	-3.2%
Newington	177	169	153	137	181	152	162	119	128	113	-15	-11.7%
Newtown	71	48	55	48	41	39	49	38	47	36	-11	-23.4%
North Branford	59	58	48	38	47	54	50	52	30	49	19	63.3%
North Haven	83	96	76	78	109	70	82	70	73	70	-3	-4.1%
Norwalk	629	644	578	490	470	406	384	394	407	368	-39	-9.6%
Norwich	470	467	402	376	438	401	371	409	428	398	-30	-7.0%
Old Saybrook	46	52	35	38	50	39	49	44	57	60	3	5.3%
Orange	32	28	25	25	38	34	44	19	32	47	15	46.9%
Plainfield	97	103	91	95	78	54	77	84	65	86	21	32.3%
Plainville	146	165	139	133	146	155	160	146	133	137	4	3.0%
Plymouth	98	84	73	79	80	85	75	70	63	47	-16	-25.4%
Portland	24	27	17	15	13	9	14	11	22	17	-5	-22.7%
Putnam Municipal	116	144	114	101	104	83	81	101	116	84	-32	-27.6%
Redding	14	7	17	16	7	8	13	12	10	3	-7	-70.0%
Ridgefield	37	47	51	44	35	32	39	31	31	28	-3	-9.7%
Rocky Hill	61	54	73	80	57	69	55	60	53	62	9	17.0%
Seymour	114	112	77	100	105	97	89	71	61	70	9	14.8%
Shelton	130	103	111	73	89	99	94	104	85	109	24	28.2%
Simsbury	53	56	57	49	44	40	40	42	54	32	-22	-40.7%
South Windsor	83	98	75	61	63	75	57	64	46	70	24	52.2%
Southern CT State University	2	3	3	2	2	2	9	7	1	1	0	0.0%
Southington	221	221	213	164	198	151	160	157	162	185	23	14.2%
Stamford	375	353	304	323	323	282	347	316	405	326	-79	-19.5%
Stonington	108	101	124	86	87	101	110	114	98	95	-3	-3.1%
Stratford	247	227	282	120	107	120	165	203	233	236	3	1.3%
Suffield	32	43	47	31	24	22	26	31	33	26	-7	-21.2%
Thomaston	35	40	41	30	23	30	28	39	36	44	8	22.2%
Torrington	370	387	385	387	337	345	354	345	300	252	-48	-16.0%
Trumbull	109	108	88	68	64	58	50	57	64	41	-23	-35.9%
UCONN Health	1	0	2	1	0	0	0	0	0	3	3	N/A
UCONN Storrs	29	21	17	11	22	29	29	20	16	15	-1	-6.3%
Vernon	179	197	185	164	186	186	189	166	171	200	29	17.0%
Wallingford	282	246	201	184	205	204	182	166	175	171	-4	-2.3%
Waterbury	1,133	1,010	1,009	962	898	922	1,073	932	993	965	-28	-2.8%
Waterford	74	80	81	73	64	71	82	53	47	48	1	2.1%
Watertown	134	121	109	93	126	124	92	103	80	79	-1	-1.3%
West Hartford	279	220	201	206	150	199	159	167	167	196	29	17.4%
West Haven	406	379	376	321	342	323	413	393	364	280	-84	-23.1%
Western CT State University	0	1	2	4	1	1	4	4	2	1	-1	-50.0%
Weston	7	12	12	9	13	18	16	10	14	12	-2	-14.3%
Westport	60	57	46	48	54	46	56	43	39	35	-4	-10.3%
Wethersfield	95	93	94	56	85	86	66	70	77	70	-7	-9.1%
Willimantic	289	249	202	191	155	152	150	145	207	199	-8	-3.9%
Wilton	45	56	30	34	30	38	24	31	28	28	0	0.0%
Winchester	104	79	90	79	50	60	91	88	109	87	-22	-20.2%
Windsor	172	158	137	125	90	130	126	148	130	120	-10	-7.7%
Windsor Locks	69	104	115	107	77	77	72	80	80	71	-9	-11.3%
Wolcott	85	86	112	91	65	74	63	70	60	63	3	5.0%
Woodbridge	2	5	12	14	17	19	19	27	24	12	-12	-50.0%
Yale	2	7	8	8	7	5	7	9	1	5	4	400.0%
Troop A CSP	152	124	153	120	146	150	124	117	110	109	-1	-0.9%
Troop B CSP	142	110	108	98	84	102	95	88	104	82	-22	-21.2%
Troop C CSP	217	177	199	216	217	178	166	199	139	203	64	46.0%
Troop D CSP	338	333	340	340	281	219	266	234	248	224	-24	-9.7%
Troop E CSP	199	196	287	315	286	224	202	149	141	175	34	24.1%
Troop F CSP	114	112	119	100	99	92	96	93	121	91	-30	-24.8%
Troop G CSP	15	10	45	28	24	46	49	23	25	26	1	4.0%
Troop H CSP	9	6	56	58	52	52	54	46	54	61	7	13.0%
Troop I CSP	77	77	89	85	94	75	99	78	53	57	4	7.5%
Troop K CSP	254	251	287	231	226	190	168	186	178	181	3	1.7%
Troop L CSP	184	144	136	147	140	142	129	111	99	87	-12	-12.1%
Troop R CSP	45	79	72	74	1	0	0	0	0	0	0	N/A
Total W CSP	0	0	3	0	0	0	0	0	0	0	0	N/A
Total CSP	1,746	1,619	1,894	1,812	1,650	1,470	1,448	1,324	1,272	1,296	24	1.9%

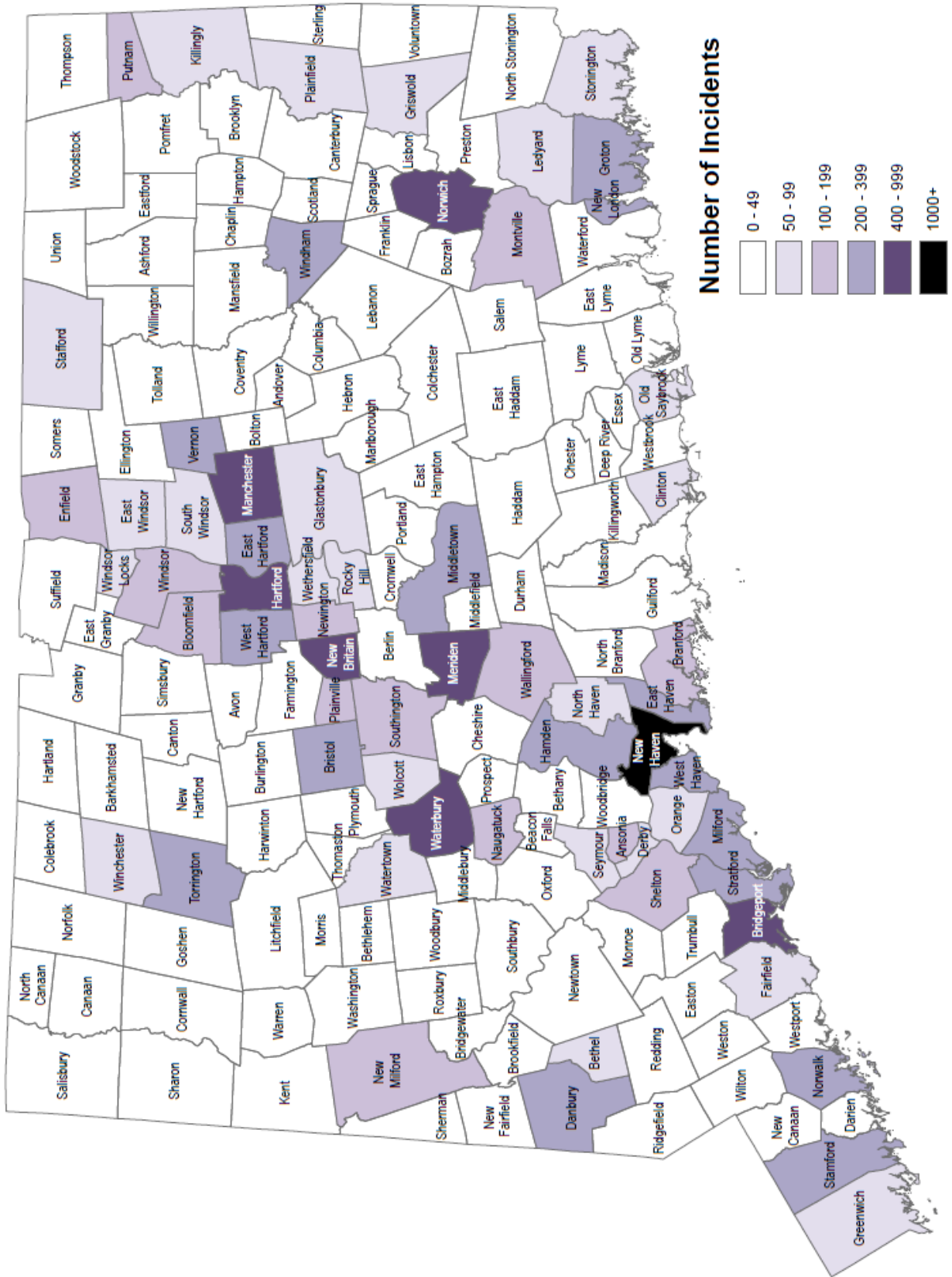
OFFENSES by TYPE - REPORTING AGENCY
CY 2019

Reporting Agency	Homicide	Assault	Kidnapping	Sexual Assault	Strangulation	Stalking	Violation Court Order	Threatening	Risk of Injury	Breach/Disorderly	Other	2019 Total Offenses	2018 Total Offenses	# Chg 2018-2019	# Chg 2018-2019
Connecticut Total	26	6,686	19	73	683	106	3,289	1,553	589	12,388	1,634	27,046	29,176	-2,130	-7.3%
AMTRAK	0	0	0	0	0	0	0	0	0	0	0	0	2	-2	-100.0%
Ansonia	1	65	0	2	5	1	22	20	2	67	1	186	205	-19	-9.3%
Avon	0	12	0	0	2	0	4	3	1	21	4	47	28	19	67.9%
Berlin	0	12	0	1	2	0	12	2	2	27	5	63	76	-13	-17.1%
Bethel	2	20	0	1	1	0	11	5	0	46	9	95	113	-18	-15.9%
Bloomfield	1	39	0	1	6	0	25	17	5	103	10	207	217	-10	-4.6%
Branford	0	21	0	0	4	0	39	16	2	110	28	220	202	18	8.9%
Bridgeport	1	438	2	3	32	1	90	94	38	686	68	1,453	1,476	-23	-1.6%
Bristol	0	116	0	0	13	5	87	33	12	118	7	391	429	-38	-8.9%
Brookfield	0	11	0	0	3	0	8	3	0	32	3	60	63	-3	-4.8%
Canton	0	0	0	0	1	0	4	1	0	7	0	13	4	9	225.0%
Central CT State University	0	0	0	0	0	0	0	0	0	3	0	3	9	-6	-66.7%
Cheshire	1	10	0	1	5	0	7	6	2	40	3	75	95	-20	-21.1%
Clinton	0	18	0	1	3	0	9	11	3	54	2	101	99	2	2.0%
Coventry	0	13	0	0	0	0	6	8	1	19	2	49	47	2	4.3%
Cromwell	0	12	0	0	0	0	11	6	1	29	5	64	57	7	12.3%
Danbury	0	147	1	2	8	4	50	22	9	147	6	396	476	-80	-16.8%
Darien	0	4	0	0	1	0	3	1	0	19	1	29	42	-13	-31.0%
DEEP	0	2	0	0	0	0	3	2	0	6	1	14	18	-4	-22.2%
Derby	0	53	0	0	1	1	28	9	9	71	14	186	163	23	14.1%
DMHAS	0	0	0	0	0	0	1	0	0	0	0	1	0	1	N/A
East Hampton	0	9	0	0	0	0	3	3	0	23	1	39	41	-2	-4.9%
East Hartford	0	94	0	0	10	2	42	28	14	183	18	391	423	-32	-7.6%
East Haven	0	59	0	0	8	1	52	30	0	154	23	327	358	-31	-8.7%
East Lyme	0	6	0	0	3	0	1	0	1	13	4	28	28	0	0.0%
East Windsor	1	19	0	0	2	1	12	7	0	51	7	100	148	-48	-32.4%
Eastern CT State University	0	0	0	0	0	0	0	0	0	3	0	3	3	0	0.0%
Easton	0	1	0	0	0	0	1	0	0	9	0	11	14	-3	-21.4%
Enfield	1	119	0	1	8	3	39	12	6	139	14	342	307	35	11.4%
Fairfield	1	23	0	1	1	1	8	7	2	55	2	101	142	-41	-28.9%
Farmington	0	8	0	0	4	0	16	1	0	24	2	55	75	-20	-26.7%
Glastonbury	0	21	0	1	4	0	7	5	1	65	3	107	132	-25	-18.9%
Granby	0	3	0	0	0	0	2	2	2	27	1	37	30	7	23.3%
Greenwich	0	17	0	0	7	0	20	10	0	60	8	122	169	-47	-27.8%
Groton City	0	29	0	2	7	0	14	7	1	69	21	150	204	-54	-26.5%
Groton Town	0	59	0	2	11	0	36	18	7	111	31	275	288	-13	-4.5%
Guilford	0	13	0	1	2	1	7	4	1	22	2	53	62	-9	-14.5%
Hamden	0	64	0	1	9	2	31	18	3	185	25	338	426	-88	-20.7%
Hartford	1	412	1	8	53	1	122	85	19	915	160	1,777	1,996	-219	-11.0%
Ledyard	0	3	0	0	0	0	0	2	0	13	1	19	45	-26	-57.8%
Madison	0	3	0	0	0	0	2	4	0	18	5	32	47	-15	-31.9%
Manchester	0	149	0	1	17	3	111	32	18	429	60	820	995	-175	-17.6%
Mashantucket Tribal	0	15	0	0	1	0	8	1	1	48	8	82	107	-25	-23.4%
Meriden	0	145	2	4	26	8	118	48	22	407	50	830	1,023	-193	-18.9%
Metro North	0	0	0	0	0	0	0	0	0	0	0	0	3	-3	-100.0%
Middlebury	0	4	0	2	0	0	0	1	0	9	0	16	13	3	23.1%
Middletown	0	67	0	0	8	3	48	24	1	206	34	391	569	-178	-31.3%
Milford	1	85	0	0	11	6	52	22	4	160	13	354	333	21	6.3%
Mohegan Tribal	0	7	0	0	2	0	1	1	0	40	0	51	65	-14	-21.5%
Monroe	0	10	0	0	0	0	8	2	3	30	7	60	87	-27	-31.0%
Naugatuck	0	43	0	0	6	1	27	8	7	100	9	201	187	14	7.5%
New Britain	1	526	0	1	19	3	137	48	24	742	105	1,606	1,162	444	38.2%
New Canaan	0	8	0	0	1	0	0	1	0	10	0	20	19	1	5.3%
New Haven	0	1,206	3	3	72	11	264	188	10	273	18	2,048	2,663	-615	-23.1%
New London	0	79	0	0	23	0	57	28	3	272	53	515	532	-17	-3.2%

**OFFENSES by TYPE - REPORTING AGENCY
CY 2019**

Reporting Agency	Homicide	Assault	Kidnapping	Sexual Assault	Strangulation	Stalking	Violation Court Order	Threatening	Risk of Injury	Breach/Disorderly	Other	2019 Total Offenses	2018 Total Offenses	# Chg 2018-2019	# Chg 2018-2019
New Milford	0	32	0	2	7	0	44	6	2	128	21	242	249	-7	-2.8%
Newington	0	32	0	0	4	1	32	10	0	94	11	184	238	-54	-22.7%
Newtown	0	3	0	0	1	2	5	6	3	27	3	50	64	-14	-21.9%
North Branford	0	10	0	0	3	0	11	13	0	25	2	64	40	24	60.0%
North Haven	0	8	0	0	1	0	20	2	4	56	1	92	98	-6	-6.1%
Norwalk	0	142	0	0	9	2	67	35	23	330	53	661	780	-119	-15.3%
Norwich	0	163	2	1	20	2	94	35	31	341	79	768	845	-77	-9.1%
Old Saybrook	0	15	0	1	3	4	18	2	0	49	13	105	114	-9	-7.9%
Orange	0	13	0	1	1	0	12	5	2	33	8	75	46	29	63.0%
Plainfield	1	47	0	0	4	1	27	4	8	82	21	195	125	70	56.0%
Plainville	0	51	0	1	2	3	33	12	11	57	2	172	172	0	0.0%
Plymouth	0	14	0	1	2	1	9	4	3	35	7	76	107	-31	-29.0%
Portland	0	3	0	0	2	0	2	3	2	20	4	36	38	-2	-5.3%
Putnam Municipal	0	24	0	0	6	0	27	6	2	72	15	152	219	-67	-30.6%
Redding	0	0	0	0	0	0	0	0	0	3	1	4	10	-6	-60.0%
Ridgefield	0	4	0	0	0	0	0	1	0	28	3	36	46	-10	-21.7%
Rocky Hill	1	8	0	1	2	0	12	9	0	43	8	84	85	-1	-1.2%
Seymour	0	22	1	0	1	0	11	7	6	48	8	104	91	13	14.3%
Shelton	0	29	0	1	3	0	44	6	5	57	1	146	112	34	30.4%
Simsbury	0	5	0	0	0	0	9	0	1	24	1	40	62	-22	-35.5%
South Windsor	0	16	0	1	5	1	9	7	2	47	4	92	66	26	39.4%
Southern CT State University	0	1	0	0	0	0	0	0	0	0	0	1	1	0	0.0%
Southington	0	44	1	0	6	1	52	11	4	117	8	244	218	26	11.9%
Stamford	0	161	0	0	17	1	43	39	29	285	54	629	753	-124	-16.5%
Stonington	1	31	0	0	3	0	23	4	2	83	16	163	173	-10	-5.8%
Stratford	0	104	0	3	8	0	38	30	18	116	5	322	337	-15	-4.5%
Suffield	0	4	0	0	0	0	4	0	0	24	0	32	58	-26	-44.8%
Thomaston	0	7	2	0	5	0	10	4	1	37	5	71	48	23	47.9%
Torrington	0	69	0	3	10	1	71	9	5	167	14	349	439	-90	-20.5%
Trumbull	0	25	0	0	0	2	6	9	2	36	8	88	119	-31	-26.1%
UCONN Health	0	1	0	0	0	0	0	2	0	1	0	4	0	4	N/A
UCONN Storrs	0	7	0	0	2	1	0	1	0	15	5	31	31	0	0.0%
Vernon	0	48	0	1	8	0	69	21	3	119	4	273	236	37	15.7%
Wallingford	0	32	0	0	9	0	37	21	8	126	4	237	266	-29	-10.9%
Waterbury	2	342	0	0	26	5	185	84	43	1,006	101	1,794	1,841	-47	-2.6%
Waterford	0	11	0	0	1	0	15	4	2	29	4	66	66	0	0.0%
Watertown	2	15	0	0	1	1	19	6	0	69	7	120	138	-18	-13.0%
West Hartford	0	79	0	2	4	6	42	30	12	178	30	383	311	72	23.2%
West Haven	0	87	0	1	12	0	59	26	17	240	26	468	653	-185	-28.3%
Western CT State University	0	0	0	0	0	0	0	0	0	1	0	1	2	-1	-50.0%
Weston	0	0	0	0	0	0	1	0	0	12	0	13	19	-6	-31.6%
Westport	0	4	0	0	2	0	6	5	1	28	0	46	52	-6	-11.5%
Wethersfield	0	23	0	1	4	0	13	11	1	47	8	108	134	-26	-19.4%
Willimantic	0	45	1	1	4	0	37	9	6	153	2	258	263	-5	-1.9%
Wilton	0	4	0	0	0	0	3	3	1	24	2	37	40	-3	-7.5%
Winchester	0	25	0	1	3	0	16	5	0	75	8	133	154	-21	-13.6%
Windsor	0	38	0	1	3	0	30	12	1	105	5	195	212	-17	-8.0%
Windsor Locks	0	19	0	0	2	1	13	2	4	69	5	115	143	-28	-19.6%
Wolcott	0	17	0	0	3	0	18	7	4	61	15	125	112	13	11.6%
Woodbridge	0	2	0	0	0	0	1	3	2	13	1	22	38	-16	-42.1%
Yale	0	1	0	0	0	1	1	0	0	3	0	6	3	3	100.0%
Troop A CSP	2	28	0	0	4	1	22	7	3	92	15	174	172	2	1.2%
Troop B CSP	0	23	0	0	5	0	22	11	5	77	10	153	178	-25	-14.0%
Troop C CSP	0	106	3	3	12	2	45	15	12	166	41	405	268	137	51.1%
Troop D CSP	1	100	0	2	13	1	50	27	20	175	21	410	375	35	9.3%
Troop E CSP	2	61	0	1	10	3	57	13	8	150	29	334	248	86	34.7%
Troop F CSP	0	38	0	1	4	0	20	8	3	66	15	155	217	-62	-28.6%
Troop G CSP	1	7	0	0	1	1	13	1	0	14	1	39	51	-12	-23.5%
Troop H CSP	0	24	0	0	4	0	29	4	5	46	6	118	89	29	32.6%
Troop I CSP	0	22	0	0	1	0	12	4	3	44	10	96	93	3	3.2%
Troop K CSP	1	69	0	2	13	2	35	17	21	176	18	354	336	18	5.4%
Troop L CSP	0	22	0	0	5	0	20	9	1	74	11	142	165	-23	-13.9%
Total CSP	7	500	3	9	72	10	325	116	81	1,080	177	2,380	2,192	188	8.6%

Family Violence Arrest Incidents by Town - 2019



**TOTAL INCIDENTS - OFFENSES - OFFENSE RATE by TOWN
CY 2019**

Town	Total Incidents	Homicide	Assault	Kidnapping	Sexual Assault	Strangulation	Stalking	Violation Court Order	Threatening	Risk of Injury	Breach/Disorderly	Other	Total Offenses	Population*	Offense Rate per 100,000
Connecticut Total	16,331	26	6,686	19	73	683	106	3,289	1,553	589	12,388	1,634	27,046	3,565,287	759
Andover	5	0	3	0	0	0	0	1	0	1	4	0	9	3,236	278
Ansonia	125	1	65	0	2	5	1	22	20	2	68	2	188	18,654	1,008
Ashford	9	0	3	0	0	1	0	2	0	1	7	1	15	4,255	353
Avon	26	0	12	0	0	2	0	4	3	1	21	4	47	18,276	257
Barkhamsted	9	0	4	0	0	0	0	1	0	0	12	1	18	3,606	499
Beacon Falls	12	0	3	0	0	0	0	4	1	1	9	1	19	6,222	305
Berlin	42	0	12	0	1	2	0	12	2	2	27	5	63	20,436	308
Bethany	11	0	1	0	0	0	0	0	0	0	13	1	15	5,548	270
Bethel	60	2	20	0	1	1	0	11	5	0	46	9	95	19,800	480
Bethlehem	6	0	3	0	0	2	0	0	0	0	6	0	11	3,402	323
Bloomfield	124	1	39	0	1	6	0	25	17	5	103	10	207	21,211	976
Bolton	10	0	3	0	0	0	0	6	0	0	6	0	15	4,884	307
Bozrah	7	0	4	0	0	2	0	2	2	1	8	0	19	2,726	697
Branford	142	0	24	0	0	4	0	39	16	2	113	28	226	27,900	810
Bridgeport	818	1	440	2	3	32	1	95	95	38	690	68	1,465	144,399	1,015
Bridgewater	4	0	0	0	0	0	0	0	0	1	3	0	4	1,635	245
Bristol	294	0	116	0	0	13	5	87	33	12	118	7	391	59,947	652
Brookfield	38	0	11	0	0	3	0	8	3	0	32	3	60	16,973	354
Brooklyn	23	0	21	0	0	3	0	5	3	0	17	5	54	8,272	653
Burlington	17	0	8	0	0	1	0	4	2	1	17	2	35	9,704	361
Canaan	5	0	1	0	0	1	0	2	1	1	4	1	11	1,053	1,045
Canterbury	7	0	4	0	0	1	0	0	1	0	7	0	13	5,079	256
Canton	9	0	0	0	0	1	0	4	1	0	7	0	13	10,254	127
Chaplin	5	0	2	0	0	1	0	1	1	4	2	0	11	2,239	491
Cheshire	44	1	12	0	1	5	0	7	6	2	42	4	80	28,937	276
Chester	1	0	1	0	0	0	0	0	0	0	1	0	2	4,213	47
Clinton	70	0	18	0	1	3	0	9	11	3	55	2	102	12,925	789
Colchester	37	0	17	0	0	2	0	3	2	1	45	3	73	15,809	462
Colebrook	1	0	0	0	0	0	0	0	0	0	1	0	1	1,400	71
Columbia	10	0	4	0	0	0	0	2	0	0	8	0	14	5,379	260
Cornwall	1	0	1	0	0	1	0	0	1	0	1	0	4	1,362	294
Coventry	33	0	13	0	0	0	0	6	8	1	19	2	49	12,407	395
Cromwell	49	0	13	0	0	0	0	11	6	1	31	5	67	13,839	484
Danbury	313	0	148	1	2	8	4	51	22	9	149	6	400	84,694	472
Darien	22	0	4	0	0	1	0	3	1	0	20	1	30	21,728	138
Deep River	5	0	2	0	0	1	0	2	0	0	4	1	10	4,443	225
Derby	99	0	54	0	0	1	1	28	9	9	71	14	187	12,339	1,516
Durham	4	0	3	0	0	0	0	0	2	0	5	0	10	7,165	140
East Granby	15	0	5	0	0	1	0	3	1	0	15	1	26	5,140	506
East Haddam	11	0	5	0	0	2	0	1	3	1	14	2	28	8,997	311
East Hampton	31	0	10	0	0	0	0	3	3	0	24	1	41	12,800	320
East Hartford	261	0	95	0	0	11	2	44	28	15	185	18	398	49,872	798
East Haven	231	0	60	0	0	8	1	52	30	0	155	24	330	28,569	1,155
East Lyme	20	0	6	0	0	3	0	2	1	1	16	4	33	18,462	179
East Windsor	68	1	19	0	0	2	1	12	7	0	51	7	100	11,668	857
Eastford	4	0	1	0	0	1	0	0	1	2	5	0	10	1,790	559
Easton	8	0	1	0	0	0	0	1	0	0	9	0	11	7,521	146
Ellington	31	0	16	0	0	2	1	5	4	2	24	6	60	16,467	364
Enfield	184	1	120	0	1	8	3	39	12	7	139	14	344	43,659	788
Essex	8	0	3	0	0	0	0	0	1	0	8	2	14	6,668	210
Fairfield	77	1	23	0	1	1	1	10	7	2	55	2	103	62,045	166
Farmington	44	0	9	0	0	4	0	16	3	0	25	2	59	25,497	231
Franklin	5	0	3	0	0	0	0	0	1	3	5	0	12	1,920	625
Glastonbury	79	0	22	0	1	4	0	8	5	1	65	4	110	34,482	319
Goshen	8	0	4	0	0	1	0	3	3	0	8	2	21	2,863	733

**TOTAL INCIDENTS - OFFENSES - OFFENSE RATE by TOWN
CY 2019**

Town	Total Incidents	Homicide	Assault	Kidnapping	Sexual Assault	Strangulation	Stalking	Violation Court Order	Threatening	Risk of Injury	Breach/Disorderly	Other	Total Offenses	Population*	Offense Rate per 100,000
Granby	24	0	3	0	0	0	0	2	2	2	27	1	37	11,507	322
Greenwich	80	0	18	0	0	7	1	20	10	0	62	8	126	62,840	201
Griswold	51	0	19	0	0	4	0	22	4	1	40	5	95	11,534	824
Groton	205	0	88	0	4	18	0	50	25	8	180	52	425	38,436	1,106
Guilford	37	0	13	0	1	2	1	8	4	1	22	2	54	22,133	244
Haddam	20	0	5	0	0	0	0	7	2	2	12	6	34	8,193	415
Hamden	208	0	65	0	1	9	2	31	18	4	186	26	342	60,556	565
Hampton	3	0	2	0	0	0	0	0	0	0	2	0	4	1,842	217
Hartford	903	1	414	1	8	53	1	127	86	21	925	160	1,797	122,105	1,472
Hartland	15	0	2	0	0	0	0	4	0	1	12	3	22	2,120	1,038
Harwinton	6	0	0	0	0	0	0	0	0	0	6	0	6	5,420	111
Hebron	20	0	8	0	0	2	0	4	3	3	17	2	39	9,504	410
Kent	7	0	0	0	0	0	0	2	1	0	6	1	10	2,777	360
Killingly	98	0	35	0	2	3	1	25	12	9	75	9	171	17,336	986
Killingworth	10	0	5	0	0	0	0	1	1	1	10	0	18	6,364	283
Lebanon	21	0	6	0	1	2	0	6	4	2	16	2	39	7,144	546
Ledyard	76	0	18	0	0	1	0	10	3	1	61	9	103	14,621	704
Lisbon	11	0	1	0	0	0	1	5	1	0	6	3	17	4,220	403
Litchfield	16	0	4	0	0	0	0	5	1	0	12	1	23	8,094	284
Lyme	1	0	1	0	0	0	0	0	0	0	1	0	2	2,316	86
Madison	23	0	3	0	0	0	0	2	4	0	20	6	35	18,030	194
Manchester	493	0	151	0	1	18	3	112	32	18	431	60	826	57,584	1,434
Mansfield	44	0	22	0	0	3	1	5	1	1	42	11	86	25,487	337
Marlborough	8	0	2	0	0	0	0	2	0	0	9	1	14	6,335	221
Meriden	489	0	148	2	4	26	8	119	48	22	410	51	838	59,395	1,411
Middlebury	14	0	4	0	2	0	0	0	1	0	9	0	16	7,798	205
Middlefield	6	0	2	0	0	0	0	0	0	0	5	0	7	4,374	160
Middletown	236	0	68	0	0	8	3	50	24	1	207	34	395	46,258	854
Milford	205	1	85	0	0	11	6	54	22	4	160	13	356	54,747	650
Monroe	38	0	10	0	0	0	0	8	2	3	30	7	60	19,434	309
Montville	106	2	29	0	1	5	0	16	7	3	98	13	174	18,508	940
Morris	5	0	2	0	0	1	0	1	1	0	4	1	10	2,254	444
Naugatuck	143	0	43	0	0	6	1	27	8	7	100	9	201	31,108	646
New Britain	789	1	527	0	1	19	3	141	50	24	748	105	1,619	72,495	2,233
New Canaan	14	1	8	0	0	1	0	0	1	0	10	0	21	20,233	104
New Fairfield	22	1	6	0	0	2	0	4	1	0	25	1	40	13,878	288
New Hartford	12	0	4	0	0	1	0	3	2	2	13	1	26	6,656	391
New Haven	1,571	0	1,208	3	3	72	12	266	189	11	278	20	2,062	130,250	1,583
New London	308	0	80	0	0	23	0	59	28	3	273	53	519	26,858	1,932
New Milford	150	0	32	0	2	7	0	44	6	2	128	21	242	26,805	903
Newington	114	0	33	0	0	4	1	32	10	0	95	12	187	30,014	623
Newtown	39	0	4	0	0	1	2	8	6	4	28	3	56	27,891	201
Norfolk	2	0	0	0	0	0	0	1	0	0	2	0	3	1,630	184
North Branford	49	0	10	0	0	3	0	11	13	0	25	2	64	14,146	452
North Canaan	16	0	4	0	0	1	0	3	3	1	15	1	28	3,251	861
North Haven	71	0	9	0	0	1	0	20	2	4	56	1	93	23,683	393
North Stonington	15	0	9	0	0	1	2	5	0	2	17	4	40	5,196	770
Norwalk	371	0	143	0	0	10	2	68	35	23	333	53	667	88,816	751
Norwich	401	0	165	2	1	20	2	95	35	31	345	79	775	38,768	1,999
Old Lyme	12	0	2	0	0	1	0	4	2	0	9	4	22	7,306	301
Old Saybrook	60	0	15	0	1	3	4	18	2	0	49	13	105	10,061	1,044
Orange	51	0	15	0	1	1	0	15	5	2	35	9	83	13,926	596
Oxford	20	0	5	0	0	0	0	5	2	0	9	5	26	13,255	196
Plainfield	87	1	47	0	0	4	1	27	4	8	83	22	197	15,125	1,302
Plainville	139	0	52	0	1	2	3	35	12	11	58	3	177	17,534	1,009
Plymouth	47	0	14	0	1	2	1	9	4	3	35	7	76	11,598	655

**TOTAL INCIDENTS - OFFENSES - OFFENSE RATE by TOWN
CY 2019**

Town	Total Incidents	Homicide	Assault	Kidnapping	Sexual Assault	Strangulation	Stalking	Violation Court Order	Threatening	Risk of Injury	Breach/Disorderly	Other	Total Offenses	Population*	Offense Rate per 100,000
Pomfret	9	0	2	0	0	0	0	2	0	2	7	2	15	4,203	357
Portland	17	0	3	0	0	2	0	2	3	2	20	4	36	9,267	388
Preston	7	0	2	0	0	0	0	2	2	1	6	1	14	4,625	303
Prospect	10	0	6	0	0	1	0	0	2	0	8	0	17	9,702	175
Putnam	100	0	31	0	0	7	0	34	9	2	79	15	177	9,389	1,885
Redding	3	0	0	0	0	0	0	0	0	0	3	1	4	9,116	44
Ridgefield	28	0	4	0	0	0	0	0	1	0	28	3	36	24,959	144
Rocky Hill	64	1	9	0	1	2	0	13	9	0	44	8	87	20,115	433
Roxbury	9	0	1	0	0	0	0	2	0	0	9	2	14	2,152	651
Salem	15	0	4	0	0	1	1	3	0	6	13	2	30	4,083	735
Salisbury	4	0	1	0	0	0	0	1	1	0	3	1	7	3,600	194
Scotland	4	0	0	0	0	0	0	1	0	0	3	0	4	1,672	239
Seymour	70	0	22	1	0	1	0	11	7	6	48	8	104	16,437	633
Sharon	4	0	1	0	0	0	0	1	0	0	3	0	5	2,689	186
Shelton	111	0	30	0	1	3	0	44	6	5	58	1	148	41,129	360
Sherman	5	1	3	0	0	0	0	0	0	0	3	1	8	3,630	220
Simsbury	32	0	5	0	0	0	0	9	0	1	24	1	40	25,395	158
Somers	23	0	16	0	0	3	0	5	3	2	18	2	49	10,784	454
South Windsor	70	0	16	0	1	5	1	9	7	2	47	4	92	26,162	352
Southbury	41	0	9	0	0	1	1	6	4	1	40	6	68	19,571	347
Southington	186	0	44	1	0	6	1	54	11	4	117	8	246	43,834	561
Sprague	11	0	4	0	0	2	0	3	0	1	12	1	23	2,859	804
Stafford	60	0	28	1	2	3	0	15	3	4	42	14	112	11,893	942
Stamford	332	0	164	0	0	17	1	45	39	29	289	54	638	129,638	492
Sterling	19	0	8	0	0	1	0	3	4	1	17	2	36	3,782	952
Stonington	95	1	31	0	0	3	0	23	4	2	83	16	163	18,559	878
Stratford	237	0	105	0	3	8	0	38	30	18	117	6	325	51,849	627
Suffield	27	0	4	0	0	0	0	5	0	0	24	0	33	15,814	209
Thomaston	44	0	7	2	0	5	0	10	4	1	37	5	71	7,535	942
Thompson	27	1	15	0	0	2	0	5	0	1	24	2	50	9,379	533
Tolland	29	0	16	0	1	1	1	5	3	1	31	8	67	14,618	458
Torrington	257	0	70	0	3	10	1	75	10	5	168	14	356	34,044	1,046
Trumbull	42	0	25	0	0	0	2	7	9	2	36	8	89	35,673	249
Union	3	0	1	0	0	0	0	2	0	1	3	0	7	839	834
Vernon	203	0	48	1	1	8	0	71	21	3	120	5	278	29,359	947
Voluntown	5	0	1	0	0	0	0	0	0	0	6	2	9	2,510	359
Wallingford	171	0	32	0	0	9	0	37	21	8	126	4	237	44,326	535
Warren	1	0	1	0	0	0	0	0	0	0	1	0	2	1,395	143
Washington	3	0	1	0	0	0	0	0	1	0	2	0	4	3,428	117
Waterbury	968	2	344	0	0	27	5	186	84	43	1,007	101	1,799	107,568	1,672
Waterford	48	0	11	0	0	1	0	15	4	2	29	4	66	18,746	352
Watertown	79	2	15	0	0	1	1	19	6	0	69	7	120	21,578	556
West Hartford	202	0	84	0	2	5	6	43	30	12	184	31	397	62,965	631
West Haven	282	0	87	0	1	12	0	61	26	17	241	26	471	54,620	862
Westbrook	20	0	12	0	1	2	0	4	0	0	9	2	30	6,869	437
Weston	12	0	0	0	0	0	0	1	0	0	12	0	13	10,252	127
Westport	35	0	4	0	0	2	0	6	5	1	28	0	46	28,491	161
Wethersfield	71	0	23	0	1	4	0	14	11	1	47	8	109	26,008	419
Willington	14	0	9	1	0	1	0	4	2	0	11	3	31	5,864	529
Wilton	28	0	4	0	0	0	0	3	3	1	24	2	37	18,343	202
Winchester	89	0	26	0	1	3	0	16	5	0	77	8	136	10,604	1,283
Windham	233	1	54	1	2	6	1	43	11	9	185	8	321	24,561	1,307
Windsor	124	0	39	0	1	3	0	33	12	2	107	6	203	28,733	707
Windsor Locks	74	0	20	0	0	2	1	15	2	4	70	5	119	12,854	926
Wolcott	63	0	17	0	0	3	0	18	7	4	61	15	125	16,587	754
Woodbridge	13	0	2	0	0	0	0	2	3	2	13	1	23	8,750	263
Woodbury	26	0	3	0	0	1	0	8	3	0	20	6	41	9,502	431
Woodstock	8	0	3	0	0	0	0	1	2	1	8	0	15	7,858	191

*Source: U.S. Census Bureau, Population Division. Annual Estimates of the Resident Population as of July 1, 2019.

STATE OF CONNECTICUT
DEPARTMENT OF EMERGENCY SERVICES AND PUBLIC PROTECTION
DIVISION OF STATE POLICE

Family Violence Offense Report

Submit this form to DESPP only if an arrest was made
(Print or type all entries. See other instructions on the reverse side of this form)

CTL NUMBER-OFFICE USE ONLY

1. Arrest <input type="checkbox"/> Yes <input type="checkbox"/> No		2. Case Number		3. Local PD Name		4. If Zero Reporting, Enter Period Covered (MM/YYYY)		5. Offense Town Code		6. Offense Date		7. Offense Time							
8. OFFENSE CODES A. Homicide B. Assault C. Kidnapping D. Sexual Assault		E. Strangulation F. Stalking G. Violation Court Order H. Threatening		I. Risk of Injury J. Breach of Peace/Disorderly Conduct K. Other															
WEAPON CODES A. Firearm B. Knife		C. Other Dangerous Weapon (Specify) _____		D. Hands, Fists, Feet, etc.		9. Enter the number of weapons used by type: A. _____ B. _____ C. _____ D. _____													
10. INJURY CODES A. Fatal		B. Serious Physical Injury		C. Minor Physical Injury		D. No Apparent Physical Injury													
STATUS CODES *Only when arrested for actual family violence *O-Offender *B-Both/All		RELATIONSHIP CODES A-Spouse B-Former Spouse C-Persons who have a child in common D-Dating Relationship		E. Persons who are presently living together or have lived together F. Other relative residing in home G. Other relative not residing in home															
11. STATUS CODES [See above]		12. Last Name		13. First Name		14. MI		15. Sex		16. DOB		17. Relationship Code (enter "VM" for victim or "VB" for both) (See above)		18. Offense Code(s) assign offense code for "VM" for victim or "VB" for both (See box 8)		19. Injury Code(s) (assign injury code for "V" for victim or "B" for both) (See box 10)		20. Liquor/Drugs Involved (enter for all persons involved) <input type="checkbox"/> Yes <input type="checkbox"/> No <input type="checkbox"/> Unk	
21. Are there Court Orders of Protection? Check appropriate box for Order Type: <input type="checkbox"/> Protective Order <input type="checkbox"/> Ex-Parte Restraining Order <input type="checkbox"/> Standing Criminal Protective Order		If Yes <input type="checkbox"/> No <input type="checkbox"/> If Yes, What is the Order Status? <input type="checkbox"/> Active <input type="checkbox"/> Expired <input type="checkbox"/> Restraining Order after Hearing <input type="checkbox"/> Conditions of Release <input type="checkbox"/> Foreign Orders		22. A child under 18 years old was: <input type="checkbox"/> Involved <input type="checkbox"/> Present <input type="checkbox"/> N/A															
23. Remarks (optional)																			
24. Officer's Name and Rank				25. Badge Number				26. Date of Report				27. Supervisor's Signature and Rank							

STATE OF CONNECTICUT
DEPARTMENT OF EMERGENCY SERVICES AND PUBLIC PROTECTION
DIVISION OF STATE POLICE

INSTRUCTIONS

- Check "Yes" if an arrest was made as a result of this incident.
Self explanatory.
For local police agencies only: If, at the end of the month, a police department has not submitted an offense report for which an arrest was made, that agency shall submit a "zero report" by completing only boxes 3, 4, 5, 26-27 on an otherwise blank form. In box #4 enter the month and year using two digits for the month and four digits for the year, i.e., 01/2013 represent January 2013.
Self explanatory.
If an offense is ongoing, choose a date and time that the offense is reported to have begun.
Offense codes, as drawn from box 8, are assigned for each victim ("V") or when the parties are both arrested ("B") and are placed in box #18.
Enter the NUMBER of each type of weapon used, otherwise leave it blank.
Injury codes, as drawn from box 10, are assigned for each victim ("V") or when the parties are both arrested ("B") and are placed in box #19.
Status: enter V for victim, O for offender, or B for both when both or all parties are arrested.
Self explanatory. If DOB is unknown enter the age or the approximate age.
Describe the relationship of the VICTIM to the offender, from the relationship codes above.
Enter an offense code from box 8 for each victim ("V") or when the parties are both arrested ("B").
Enter an injury code from box 10 for each victim ("V") or when the parties are both arrested ("B").
Self explanatory.
A child is someone under 18 years of age who is not functioning in an adult relationship (e.g. not a parent or live-in).
Use remarks to explain entries which appear confusing, e.g. same last names but unrelated parties.
Self explanatory.

DISTRIBUTION OF FORMS

If an Arrest is Made:

Local Police Officers

Send the completed original form (*white copy or original electronic printout*) to the Department of Emergency Services and Public Protection, Crime Analysis Unit, 1111 Country Club Road, Middletown, Connecticut 06457-2389.
The second copy (*yellow or additional electronic printout*) is directed to the State's Attorney of the appropriate court.
Retain *pink* copy or electronic document in your local agency files.

State Police Troopers

Send the completed original form (*white copy or original electronic printout*) to the Department of Emergency Services and Public Protection, Crime Analysis Unit, 1111 Country Club Road, Middletown, Connecticut 06457-2389.
The second copy (*yellow or additional electronic printout*) is directed to the State's Attorney of the appropriate court.
The third copy (*pink or additional electronic printout*) is sent to Reports and Records with the investigation report.
Make two photocopies, one for the troop incident file and one for the arresting trooper's files.

If No Arrest is Made:

Local Police Officers

Keep all three copies or the electronic document in department files.

State Police Troopers

Send original to Reports and Records **only** when not completed electronically.
Retain second and third copies (*yellow and pink*) in troop incident files **only** when not completed electronically.

DPS-230-C (Rev. 07/03/13)

An Affirmative Action/Equal Employment Opportunity Employer