

Measures of Primary Care Access: Table of Contents

| Data | Pages |
|--|--------------|
| Draft Summary of Gap and Network Adequacy Analysis | 2-3 |
| Network Adequacy Analysis for HUSKY A | 4-11 |
| Network Adequacy Analysis for HUSKY B | 12-16 |
| Network Adequacy Analysis for HUSKY C | 17-24 |
| Network Adequacy Analysis for HUSKY D | 25-32 |
| PCMH Practice Site Locations | 33-36 |

Data Source: CHNCT, Inc.

| HUSKY GEO ACCESS by LOB | HUSKY A 1:15 | HUSKY A 1:20 | HUSKY A 1:25 | HUSKY B 1:15 | HUSKY B 1:20 | HUSKY B 1:25 | HUSKY C 1:15 | HUSKY C 1:20 | HUSKY C 1:25 | HUSKY D 1:15 | HUSKY D 1:20 | HUSKY D 1:25 |
|----------------------------|--------------|--------------|--------------|--------------|--------------|--------------|--------------|--------------|--------------|--------------|--------------|--------------|
| PCPs (Adult) | 100% | | | | | | 100% | | | 100% | | |
| Pediatricians (Child) | 100% | | | 100% | | | 100% | | | 100% | | |
| OB/GYNs | 100% | | | 100% | | | 100% | | | 100% | | |
| Allergy | | 97.1% | 98.0% | | 96.8% | 98.2% | | 97.5% | 98.4% | | 97.4% | 98.3% |
| Cardiology | | 100.0% | | | 100% | | | 100% | | | 100% | |
| Dermatology | | 97.9% | 99.1% | | 97.6% | 98.7% | | 98.1% | 99.1% | | 98.1% | 99.2% |
| Endocrinology | | 99.8% | 99.9% | | 99.6% | 99.9% | | 99.7% | 99.9% | | 99.8% | 99.9% |
| ENT | | 92.5% | 94.0% | | 93.6% | 95.1% | | 92.9% | 94.1% | | 92.2% | 93.8% |
| Gastroenterology | | 100% | | | 100% | | | 100% | | | 100% | |
| General Surgery | | 100% | 100% | | 100% | 100% | | 100% | 100% | | 100% | 100% |
| Neurology | | 100% | 100% | | 100% | 100% | | 100% | 100% | | 100% | 100% |
| Oncology | | 99.7% | | | 99.5% | | | 99.6% | | | 99.7% | |
| Ophthalmology | | 99.9% | | | 99.7% | | | 99.7% | | | 99.8% | |
| Orthopedic | | 99.9% | | | 100% | | | 99.9% | | | 99.9% | |
| Pain Medicine ¹ | | 97.9% | 99.8% | | 97.0% | 99.7% | | 97.4% | 99.6% | | 97.5% | 99.8% |
| Pulmonary | | 99.9% | 100% | | 100% | 100% | | 99.9% | 100% | | 99.9% | 100% |
| Rheumatology | | 99.8% | 99.9% | | 99.5% | 99.9% | | 99.7% | 99.9% | | 99.8% | 99.9% |
| Urology | | 99.7% | 99.8% | | 99.2% | 99.5% | | 99.6% | 99.7% | | 99.6% | 99.7% |

¹ Providers mapped for network adequacy does not include non-Pain Medicine specialties i.e. Orthopedics, Internal Medicine, Nurse Practitioners rendering pain management services. The CMAP Pain Management network consists of 96 performing providers in 40 groups as of 6/28/2023.

| Program Name | Total Membership | Number of attributed and unattributed members included with access to a PCP/Pedi with an open panel | Number of attributed members excluded with access to a PCP/Pedi with a closed or limited panel | Percentage of membership included with access to a PCP/Pedi with an open panel | Percentage of membership excluded with access to a PCP/Pedi with a closed panel |
|---------------------|-------------------------|--|---|---|--|
| HUSKY A | 561,944 | 513,228 | 48,716 | 91.33% | 8.67% |
| HUSKY B | 12,786 | 10,775 | 2,011 | 84.27% | 15.73% |
| HUSKY C | 77,044 | 71,606 | 5,438 | 92.94% | 7.06% |
| HUSKY D | 370,065 | 350,907 | 19,158 | 94.82% | 5.18% |



Community Health Network of CT, Inc.

***A report on the accessibility of the CMAP Provider
Network with Open Panels for HUSKY A members HUSKY Health Program***

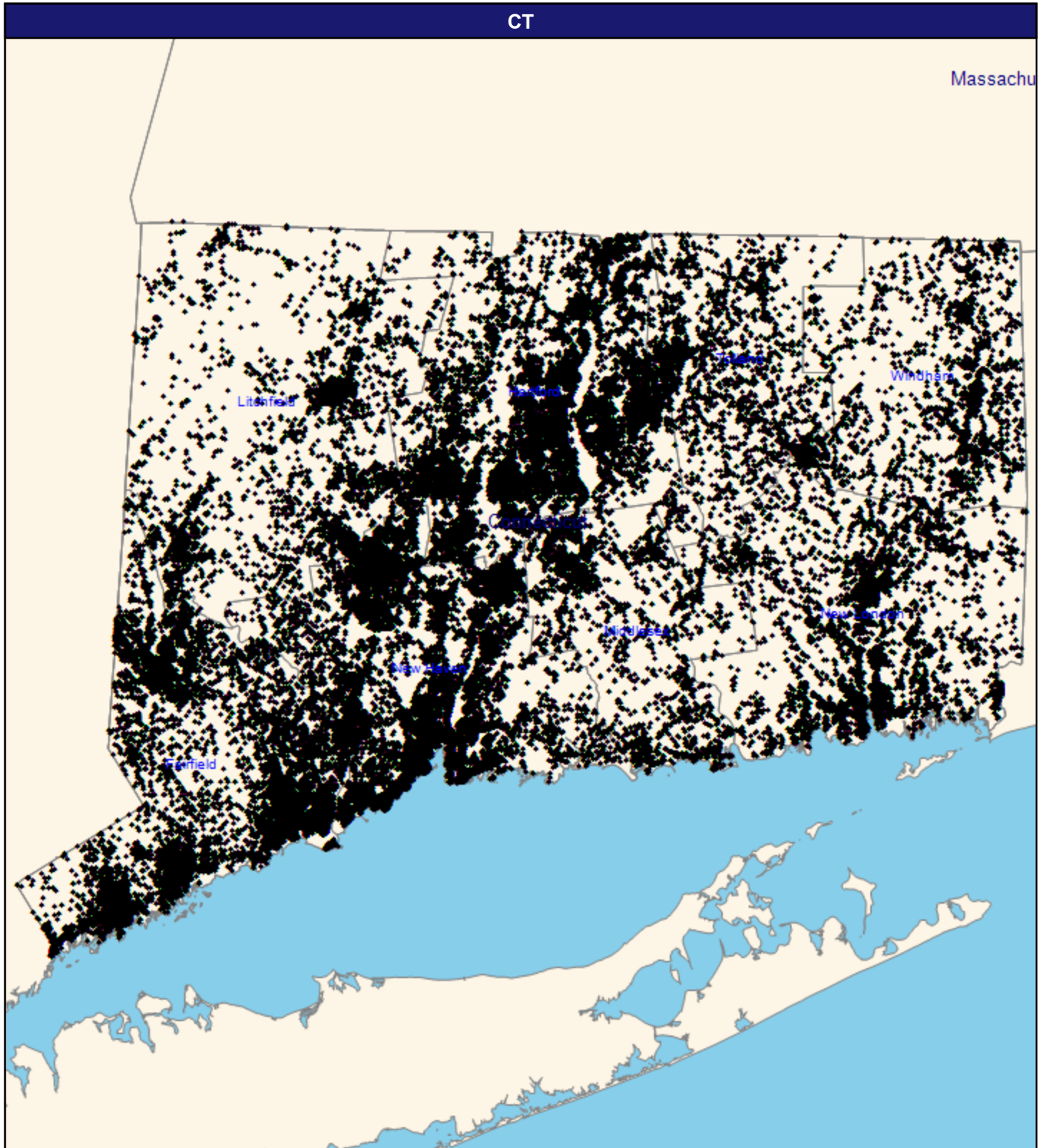
June 6, 2023



Ex E Gap and Network Adequacy Analysis #10 HUSKY A

June 6, 2023

HUSKY A for PCPs



© 2023 Quest Analytics, LLC.

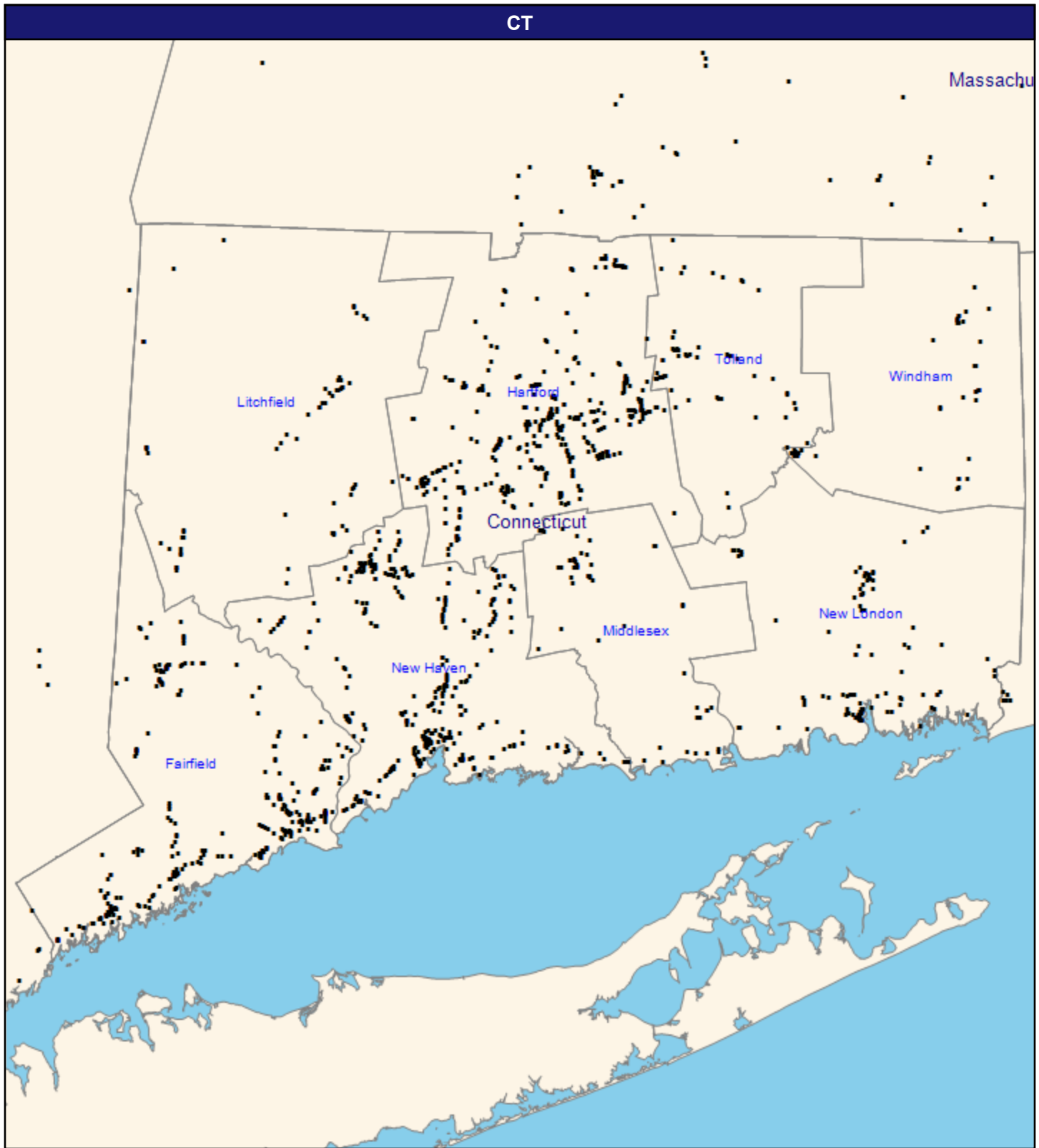
June 6, 2023

HUSKY A for PCPs

188,974 member locations

◆ All Members

PCPs



© 2023 Quest Analytics, LLC.

June 6, 2023

PCPs

Total Providers: 2,583

■ All providers

13.69 miles

Access Summary By City

| Members With Access | | | |
|---------------------|---|-----------------------|---|
| Member Group | 188,966 members 188,966 (100.0%) members with access | Provider Group | 2,583 unique providers at 1,400 unique locations (5,933 total access points) |

| Key Geographic Areas | | | | | |
|----------------------|----------------------|--------|--------------------------|-------|------------------|
| | City | Member | With Access ¹ | | Average Distance |
| | | # | # | % | 1 |
| With Access | Bridgeport, CT | 14,153 | 14,153 | 100.0 | 0.4 |
| | Hartford, CT | 13,917 | 13,917 | 100.0 | 0.4 |
| | Waterbury, CT | 13,791 | 13,791 | 100.0 | 0.6 |
| | New Haven, CT | 10,983 | 10,983 | 100.0 | 0.5 |
| | New Britain, CT | 8,222 | 8,222 | 100.0 | 0.7 |
| | Stamford, CT | 6,183 | 6,183 | 100.0 | 0.6 |
| | Meriden, CT | 5,116 | 5,116 | 100.0 | 0.7 |
| | Danbury, CT | 5,070 | 5,070 | 100.0 | 0.8 |
| | East Hartford, CT | 4,583 | 4,583 | 100.0 | 0.5 |
| | Norwalk, CT | 4,484 | 4,484 | 100.0 | 0.6 |
| | Bristol, CT | 4,338 | 4,338 | 100.0 | 0.6 |
| | Manchester, CT | 4,321 | 4,321 | 100.0 | 0.5 |
| | West Haven, CT | 3,966 | 3,966 | 100.0 | 0.6 |
| | Norwich, CT | 3,407 | 3,407 | 100.0 | 0.9 |
| | Stratford, CT | 2,895 | 2,895 | 100.0 | 0.7 |
| | Torrington, CT | 2,763 | 2,763 | 100.0 | 0.8 |
| | Hamden, CT | 2,701 | 2,701 | 100.0 | 0.7 |
| | New London, CT | 2,505 | 2,505 | 100.0 | 0.5 |
| | Naugatuck, CT | 2,390 | 2,390 | 100.0 | 0.8 |
| | Middletown, CT | 2,352 | 2,352 | 100.0 | 0.8 |
| | Enfield, CT | 2,065 | 2,065 | 100.0 | 1.2 |
| | West Hartford, CT | 1,942 | 1,942 | 100.0 | 0.5 |
| | Vernon Rockville, CT | 1,870 | 1,870 | 100.0 | 0.5 |
| | Ansonia, CT | 1,770 | 1,770 | 100.0 | 0.6 |
| | East Haven, CT | 1,750 | 1,750 | 100.0 | 0.8 |
| | Willimantic, CT | 1,726 | 1,726 | 100.0 | 0.7 |
| | Groton, CT | 1,649 | 1,649 | 100.0 | 1.0 |
| | Milford, CT | 1,560 | 1,560 | 100.0 | 0.9 |
| | Windsor, CT | 1,532 | 1,532 | 100.0 | 0.9 |
| | Wallingford, CT | 1,456 | 1,456 | 100.0 | 0.8 |
| | Shelton, CT | 1,438 | 1,438 | 100.0 | 1.2 |
| | New Milford, CT | 1,255 | 1,255 | 100.0 | 1.3 |
| | Fairfield, CT | 1,231 | 1,231 | 100.0 | 0.7 |
| | Newington, CT | 1,224 | 1,224 | 100.0 | 0.8 |
| | Southington, CT | 1,122 | 1,122 | 100.0 | 0.8 |
| | Wethersfield, CT | 1,038 | 1,038 | 100.0 | 0.7 |
| | Bloomfield, CT | 1,030 | 1,030 | 100.0 | 1.1 |
| | Derby, CT | 964 | 964 | 100.0 | 0.7 |
| | Trumbull, CT | 949 | 949 | 100.0 | 0.9 |
| | Jewett City, CT | 934 | 934 | 100.0 | 2.0 |
| | Greenwich, CT | 929 | 929 | 100.0 | 0.9 |
| | Seymour, CT | 850 | 850 | 100.0 | 1.3 |
| | Plainville, CT | 828 | 828 | 100.0 | 0.6 |
| | Bethel, CT | 825 | 825 | 100.0 | 0.8 |
| | Branford, CT | 769 | 769 | 100.0 | 0.8 |

© 2023 Quest Analytics, LLC.

June 6, 2023

Access Analysis

1 in 15

Member Group

HUSKY A for PCPs

Provider Group

PCPs

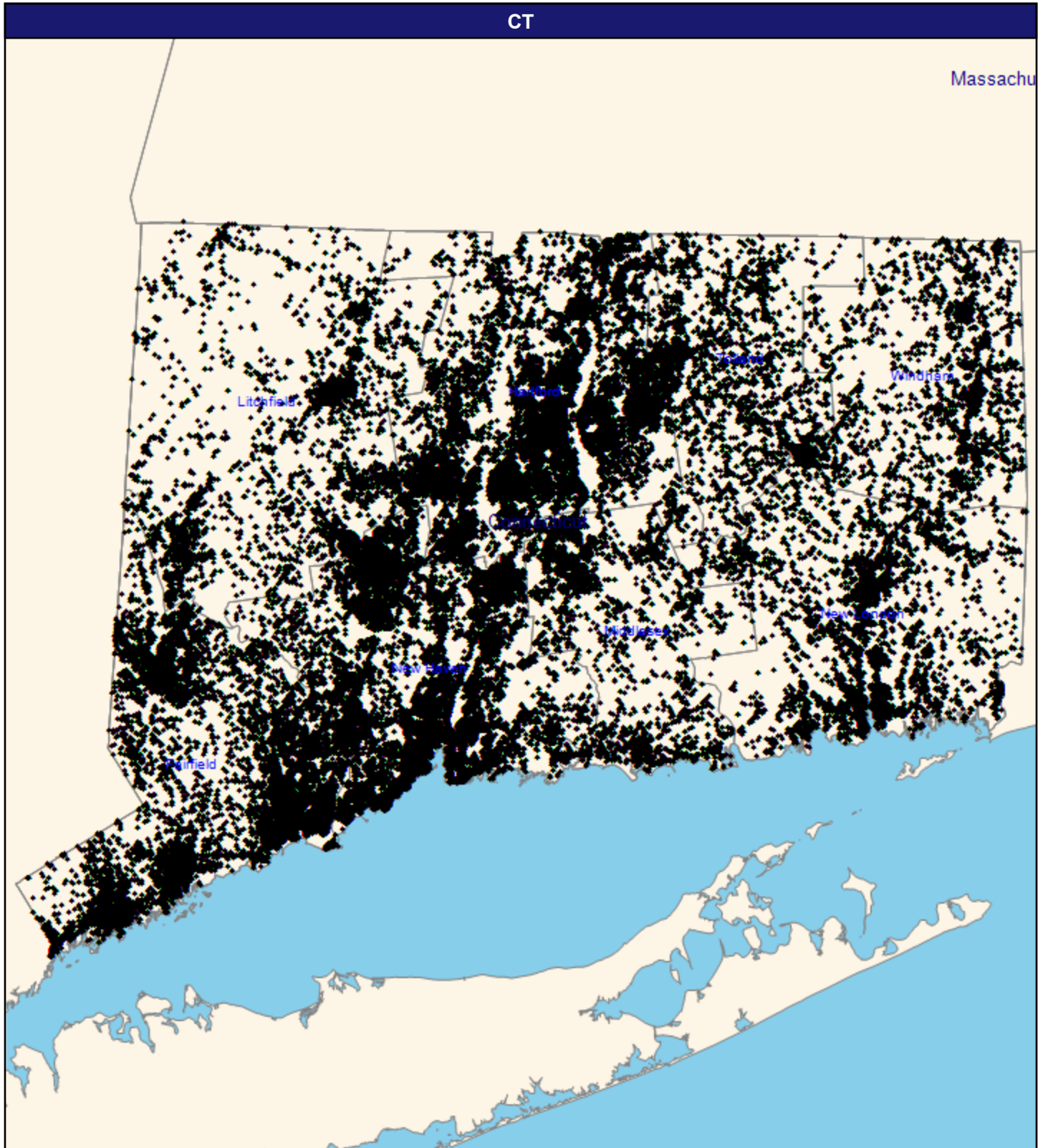
Areas With Access

Top 45 Cities in the market, sorted by the number of members with access

¹ The Access Standard is defined as (HUSKY A for PCPs) members accessing:

1 (PCPs) provider in 15 miles

HUSKY A Children for Pediatricians



© 2023 Quest Analytics, LLC.

June 6, 2023

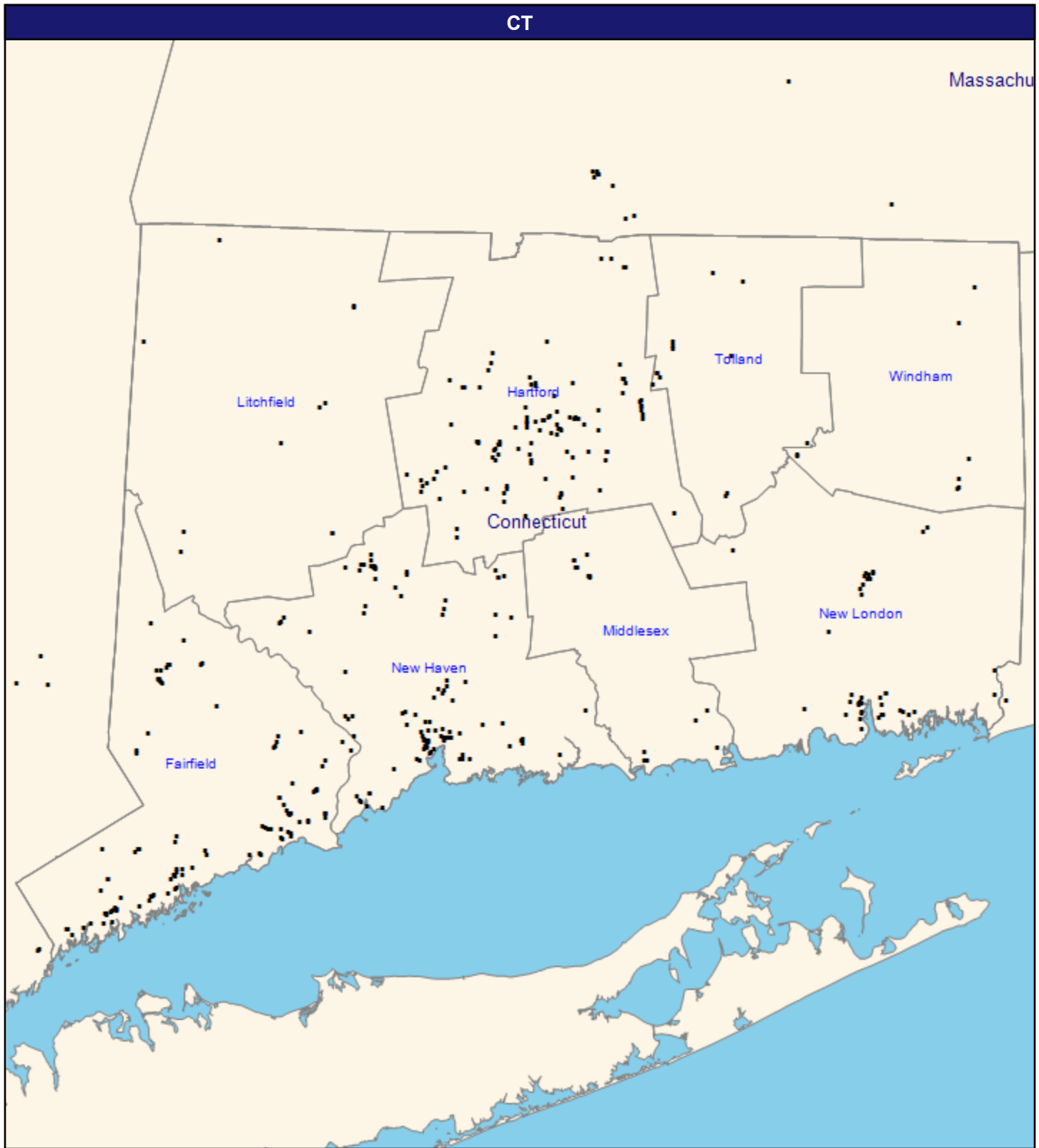
HUSKY A Children for Pediatricians

315,234 member locations

◆ All Members

13.69 miles

Pediatricians



© 2023 Quest Analytics, LLC.

June 6, 2023

Pediatricians

Total Providers: 653

■ All providers

13.69 miles

Access Summary By City

| All Members | | | |
|---------------------|---|-----------------------|---|
| Member Group | 315,223 members 315,223 (100.0%) members with access | Provider Group | 653 unique providers at 443 unique locations (1,571 total access points) |

| Key Geographic Areas | | | | | | |
|----------------------|--------|--------------------------|-------|---------------------|------------------|--|
| City | Member | With Access ¹ | | Counts ² | Average Distance | |
| | # | # | % | # | 1 | |
| Bridgeport, CT | 29,490 | 29,490 | 100.0 | 75 | 0.6 | |
| Hartford, CT | 25,808 | 25,808 | 100.0 | 107 | 0.7 | |
| New Haven, CT | 21,833 | 21,833 | 100.0 | 129 | 0.4 | |
| Waterbury, CT | 21,605 | 21,605 | 100.0 | 63 | 1.0 | |
| New Britain, CT | 12,738 | 12,738 | 100.0 | 23 | 1.0 | |
| Stamford, CT | 11,145 | 11,145 | 100.0 | 52 | 0.7 | |
| Danbury, CT | 10,942 | 10,942 | 100.0 | 32 | 1.0 | |
| Norwalk, CT | 9,463 | 9,463 | 100.0 | 38 | 0.6 | |
| Meriden, CT | 9,430 | 9,430 | 100.0 | 18 | 1.2 | |
| East Hartford, CT | 8,397 | 8,397 | 100.0 | 23 | 1.0 | |
| West Haven, CT | 7,567 | 7,567 | 100.0 | 4 | 1.1 | |
| Manchester, CT | 7,077 | 7,077 | 100.0 | 18 | 1.0 | |
| Bristol, CT | 6,925 | 6,925 | 100.0 | 31 | 0.8 | |
| Stratford, CT | 5,252 | 5,252 | 100.0 | 73 | 1.2 | |
| Norwich, CT | 4,787 | 4,787 | 100.0 | 25 | 1.3 | |
| Hamden, CT | 4,723 | 4,723 | 100.0 | 19 | 1.1 | |
| New London, CT | 4,009 | 4,009 | 100.0 | 34 | 0.4 | |
| Torrington, CT | 3,965 | 3,965 | 100.0 | 13 | 2.1 | |
| Middletown, CT | 3,902 | 3,902 | 100.0 | 30 | 1.7 | |
| Enfield, CT | 3,525 | 3,525 | 100.0 | 32 | 1.5 | |
| Naugatuck, CT | 3,516 | 3,516 | 100.0 | 5 | 1.1 | |
| Willimantic, CT | 3,335 | 3,335 | 100.0 | 4 | 1.1 | |
| East Haven, CT | 3,257 | 3,257 | 100.0 | 5 | 1.2 | |
| West Hartford, CT | 3,073 | 3,073 | 100.0 | 26 | 0.7 | |
| Ansonia, CT | 2,915 | 2,915 | 100.0 | 7 | 0.8 | |
| Windsor, CT | 2,620 | 2,620 | 100.0 | 2 | 1.9 | |
| Vernon Rockville, CT | 2,545 | 2,545 | 100.0 | 8 | 1.2 | |
| Milford, CT | 2,347 | 2,347 | 100.0 | 23 | 1.5 | |
| Shelton, CT | 2,238 | 2,238 | 100.0 | 40 | 1.3 | |
| Wallingford, CT | 2,208 | 2,208 | 100.0 | 13 | 1.7 | |
| Groton, CT | 2,169 | 2,169 | 100.0 | 22 | 0.8 | |
| New Milford, CT | 2,009 | 2,009 | 100.0 | 6 | 1.9 | |
| Bloomfield, CT | 1,911 | 1,911 | 100.0 | 11 | 1.4 | |
| Fairfield, CT | 1,890 | 1,890 | 100.0 | 46 | 0.9 | |
| Newington, CT | 1,802 | 1,802 | 100.0 | 16 | 1.2 | |
| Derby, CT | 1,623 | 1,623 | 100.0 | 2 | 0.9 | |
| Greenwich, CT | 1,591 | 1,591 | 100.0 | 16 | 1.6 | |
| Wethersfield, CT | 1,588 | 1,588 | 100.0 | 3 | 1.0 | |
| Trumbull, CT | 1,537 | 1,537 | 100.0 | 40 | 1.4 | |
| Southington, CT | 1,460 | 1,460 | 100.0 | 6 | 1.2 | |
| Branford, CT | 1,325 | 1,325 | 100.0 | 16 | 1.7 | |
| Seymour, CT | 1,276 | 1,276 | 100.0 | 0 | 2.1 | |
| Plainville, CT | 1,176 | 1,176 | 100.0 | 2 | 1.1 | |
| Bethel, CT | 1,162 | 1,162 | 100.0 | 0 | 2.5 | |
| Jewett City, CT | 1,161 | 1,161 | 100.0 | 4 | 2.2 | |

© 2023 Quest Analytics, LLC.

June 6, 2023

Access Analysis

1 in 15

Member Group

HUSKY A Children for Pediatricians

Provider Group

Pediatricians

Areas With Access

Top 45 Cities in the market, sorted by the number of members with access

¹ The Access Standard is defined as (HUSKY A Children for Pediatricians) members accessing:

1 (Pediatricians) provider in 15 miles

² Provider counts represent:

#: Provider access points



Community Health Network of CT, Inc.

***A report on the accessibility of the CMAP Provider
Network with Open Panels for HUSKY B members HUSKY Health Program***

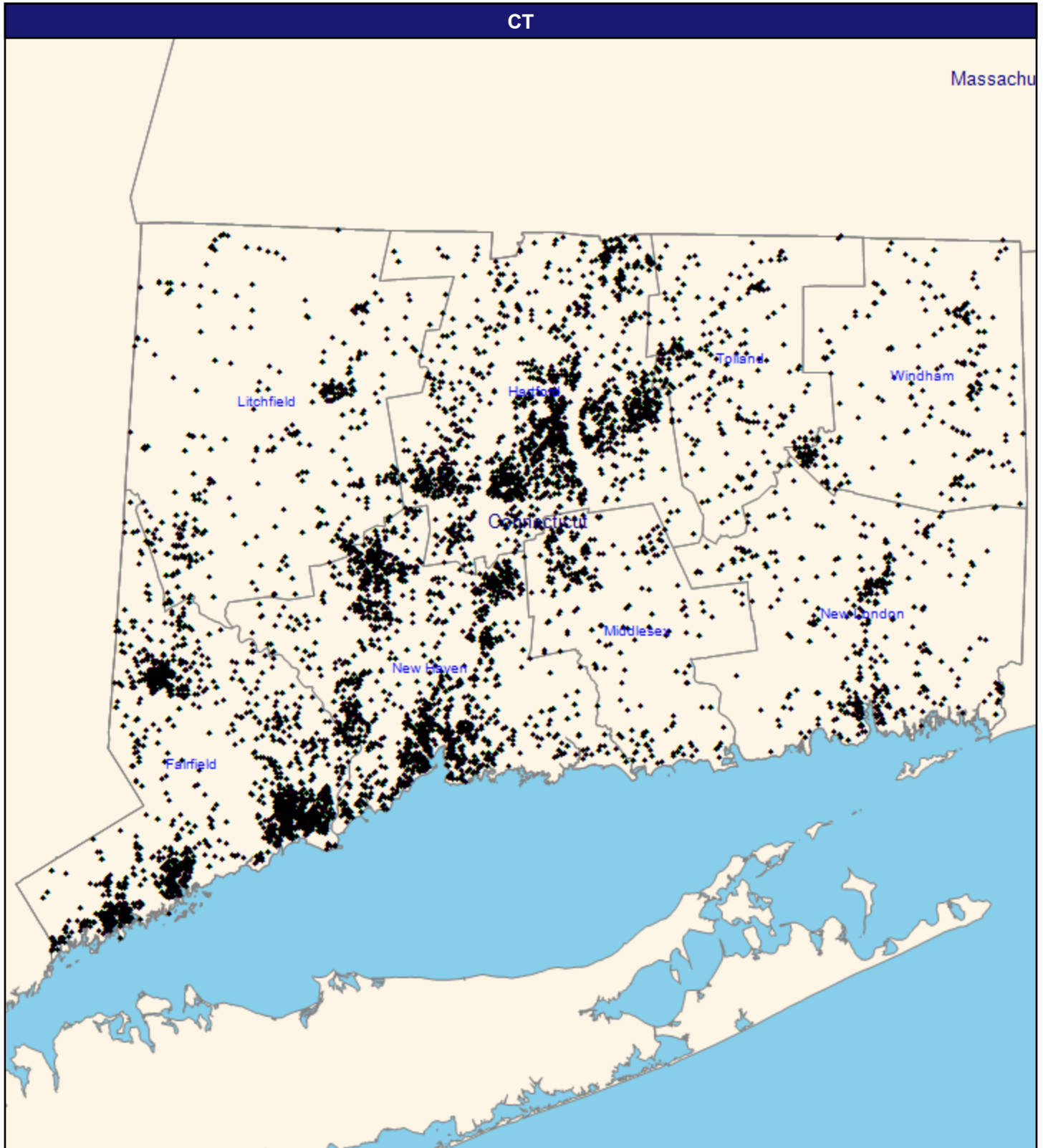
June 6, 2023



Ex E Gap and Network Adequacy Analysis #10 HUSKY B

June 6, 2023

HUSKY B Children for Pediatricians



© 2023 Quest Analytics, LLC.

June 6, 2023

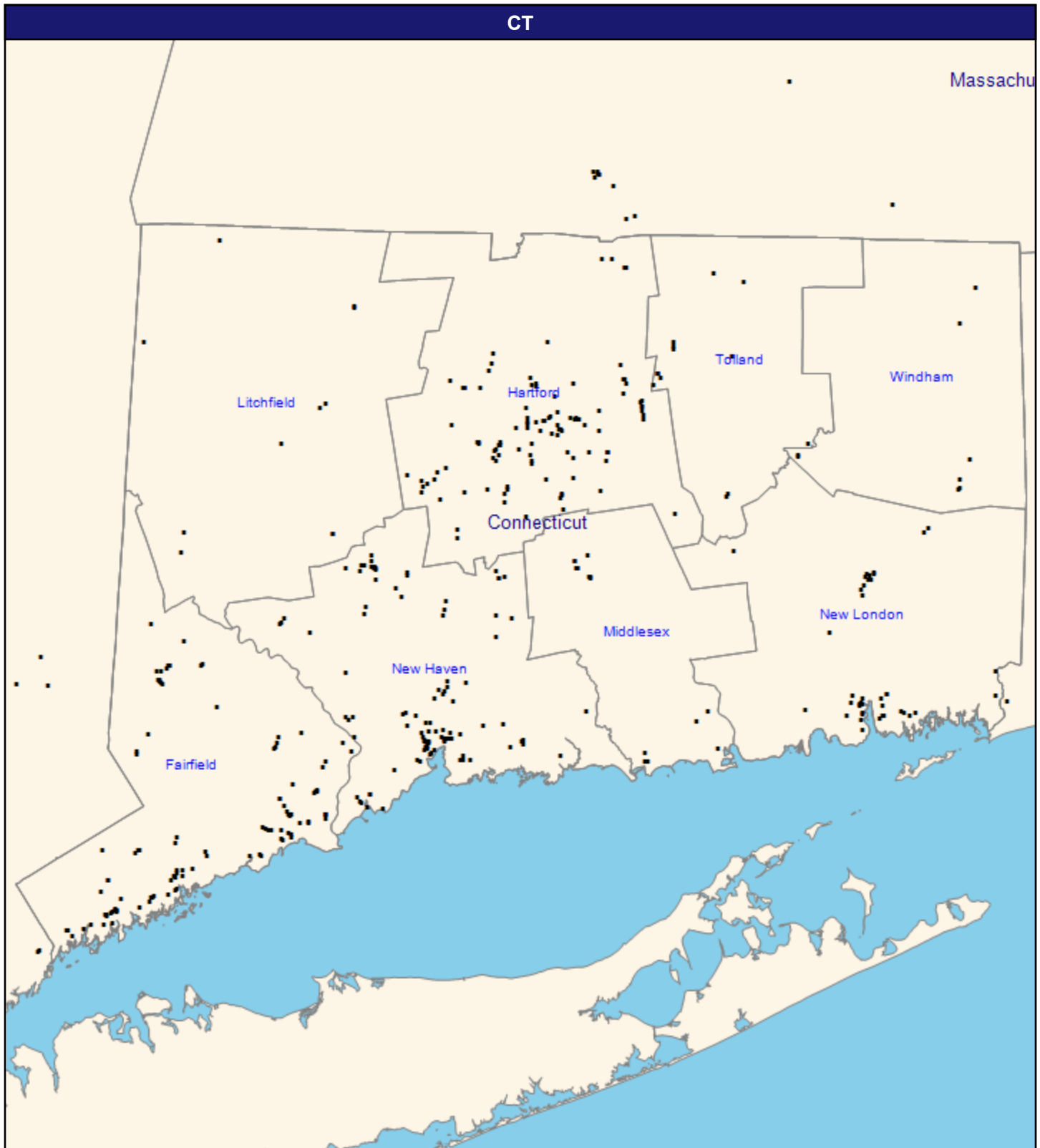
HUSKY B Children for Pediatricians

10,168 member locations

◆ All Members

13.69 miles

Pediatricians



© 2023 Quest Analytics, LLC.

June 6, 2023

Pediatricians

Total Providers: 653

■ All providers

13.69 miles

Access Summary By City

| All Members | | | |
|---------------------|---|-----------------------|---|
| Member Group | 10,167 members 10,167 (100.0%) members with access | Provider Group | 653 unique providers at 443 unique locations (1,571 total access points) |

| Key Geographic Areas | | | | | | |
|----------------------|--------|--------------------------|-------|---------------------|------------------|--|
| City | Member | With Access ¹ | | Counts ² | Average Distance | |
| | # | # | % | # | 1 | |
| Bridgeport, CT | 615 | 615 | 100.0 | 75 | 0.7 | |
| Danbury, CT | 353 | 353 | 100.0 | 32 | 1.2 | |
| Waterbury, CT | 351 | 351 | 100.0 | 63 | 1.0 | |
| Stamford, CT | 329 | 329 | 100.0 | 52 | 0.7 | |
| New Haven, CT | 305 | 305 | 100.0 | 129 | 0.5 | |
| Norwalk, CT | 301 | 301 | 100.0 | 38 | 0.8 | |
| Hartford, CT | 277 | 277 | 100.0 | 107 | 0.7 | |
| New Britain, CT | 259 | 259 | 100.0 | 23 | 1.1 | |
| Manchester, CT | 256 | 256 | 100.0 | 18 | 1.2 | |
| Bristol, CT | 227 | 227 | 100.0 | 31 | 0.9 | |
| Stratford, CT | 223 | 223 | 100.0 | 73 | 1.2 | |
| Meriden, CT | 216 | 216 | 100.0 | 18 | 1.4 | |
| East Hartford, CT | 213 | 213 | 100.0 | 23 | 1.2 | |
| West Haven, CT | 189 | 189 | 100.0 | 4 | 1.3 | |
| Enfield, CT | 178 | 178 | 100.0 | 32 | 1.8 | |
| West Hartford, CT | 142 | 142 | 100.0 | 26 | 0.7 | |
| New Milford, CT | 139 | 139 | 100.0 | 6 | 2.5 | |
| Milford, CT | 131 | 131 | 100.0 | 23 | 1.5 | |
| Middletown, CT | 124 | 124 | 100.0 | 30 | 2.1 | |
| Wallingford, CT | 124 | 124 | 100.0 | 13 | 1.9 | |
| Hamden, CT | 120 | 120 | 100.0 | 19 | 1.3 | |
| Torrington, CT | 119 | 119 | 100.0 | 13 | 2.8 | |
| East Haven, CT | 118 | 118 | 100.0 | 5 | 1.3 | |
| Shelton, CT | 112 | 112 | 100.0 | 40 | 1.4 | |
| Naugatuck, CT | 110 | 110 | 100.0 | 5 | 1.4 | |
| Windsor, CT | 109 | 109 | 100.0 | 2 | 1.9 | |
| Newington, CT | 108 | 108 | 100.0 | 16 | 1.2 | |
| Trumbull, CT | 105 | 105 | 100.0 | 40 | 1.7 | |
| Vernon Rockville, CT | 98 | 98 | 100.0 | 8 | 1.3 | |
| Wethersfield, CT | 97 | 97 | 100.0 | 3 | 1.1 | |
| Fairfield, CT | 92 | 92 | 100.0 | 46 | 0.9 | |
| Norwich, CT | 92 | 92 | 100.0 | 25 | 1.5 | |
| Ansonia, CT | 82 | 82 | 100.0 | 7 | 1.0 | |
| Monroe, CT | 82 | 82 | 100.0 | 3 | 2.1 | |
| Branford, CT | 74 | 74 | 100.0 | 16 | 1.6 | |
| Willimantic, CT | 72 | 72 | 100.0 | 4 | 1.1 | |
| New London, CT | 70 | 70 | 100.0 | 34 | 0.4 | |
| Bethel, CT | 68 | 68 | 100.0 | 0 | 2.5 | |
| Seymour, CT | 68 | 68 | 100.0 | 0 | 2.0 | |
| Southington, CT | 67 | 67 | 100.0 | 6 | 1.4 | |
| Groton, CT | 65 | 65 | 100.0 | 22 | 0.9 | |
| South Windsor, CT | 65 | 65 | 100.0 | 15 | 1.4 | |
| Bloomfield, CT | 64 | 64 | 100.0 | 11 | 1.4 | |
| North Haven, CT | 62 | 62 | 100.0 | 6 | 1.5 | |
| Plainville, CT | 57 | 57 | 100.0 | 2 | 1.3 | |

© 2023 Quest Analytics, LLC.

June 6, 2023

Access Analysis

1 in 15

Member Group

HUSKY B Children for Pediatricians

Provider Group

Pediatricians

Areas With Access

Top 45 Cities in the market, sorted by the number of members with access

¹ The Access Standard is defined as (HUSKY B Children for Pediatricians) members accessing:

1 (Pediatricians) provider in 15 miles

² Provider counts represent:

#: Provider access points



Community Health Network of CT, Inc.

***A report on the accessibility of the CMAP Provider
Network with Open Panels for HUSKY C members HUSKY Health Program***

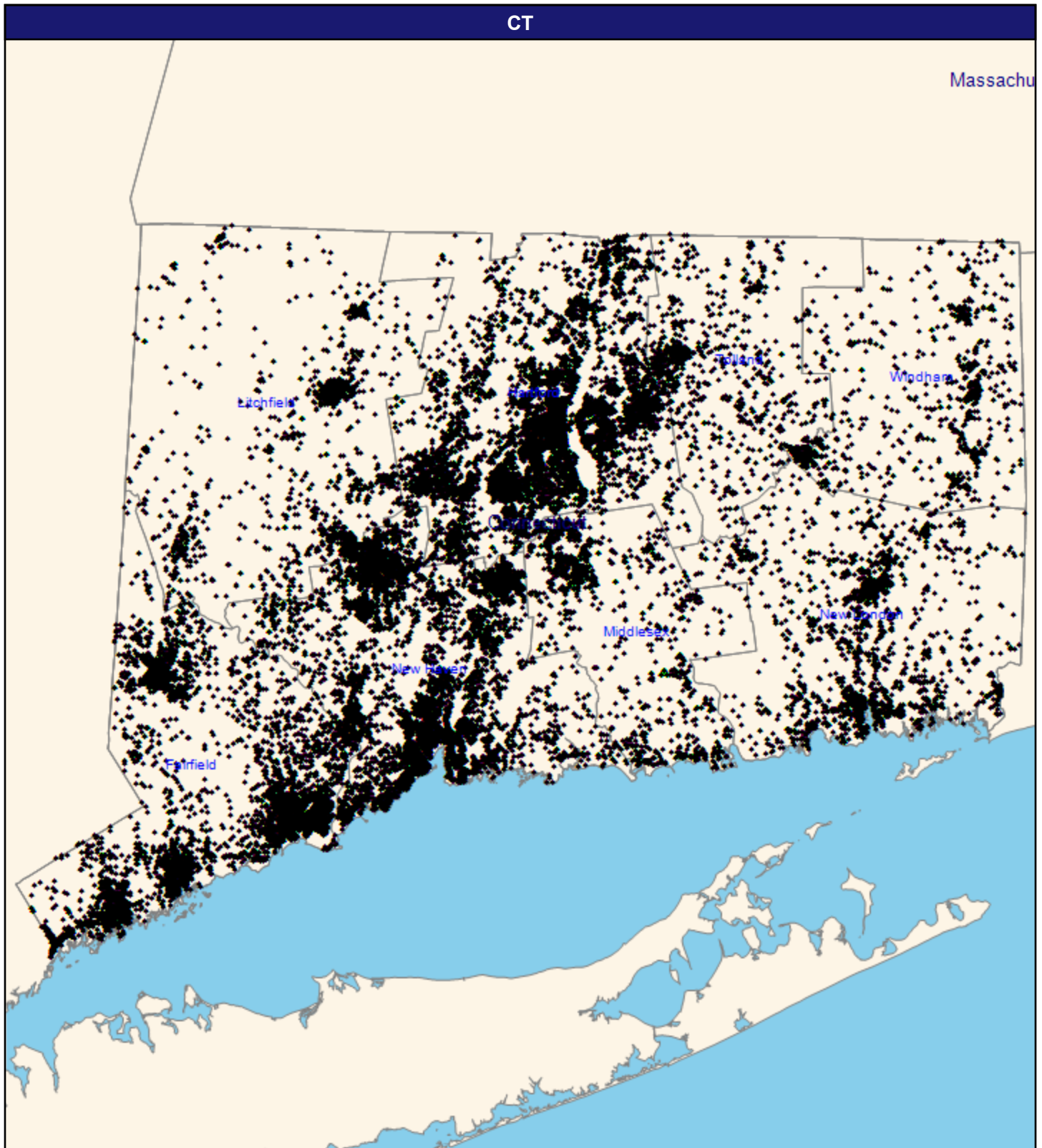
June 6, 2023



Ex E Gap and Network Adequacy Analysis #10 HUSKY C

June 6, 2023

HUSKY C for PCPs



© 2023 Quest Analytics, LLC.

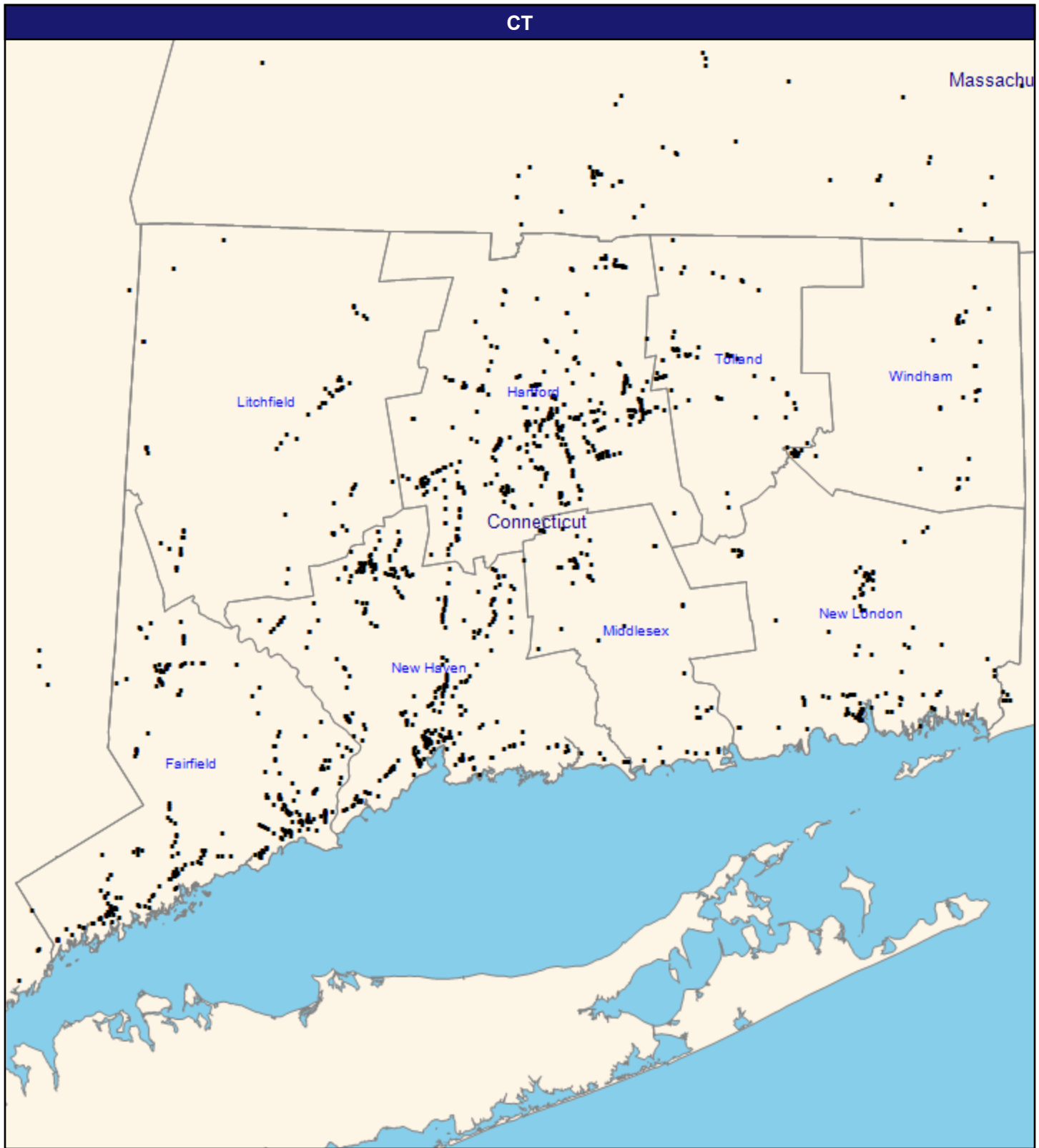
June 6, 2023

HUSKY C for PCPs

71,581 member locations

◆ All Members

PCPs



© 2023 Quest Analytics, LLC.

June 6, 2023

PCPs

Total Providers: 2,583

■ All providers

13.69 miles

Access Summary By City

| Members With Access | | | |
|---------------------|---|-----------------------|---|
| Member Group | 71,575 members 71,575 (100.0%) members with access | Provider Group | 2,583 unique providers at 1,400 unique locations (5,933 total access points) |

| Key Geographic Areas | | | | | |
|----------------------|----------------------|--------|--------------------------|-------|------------------|
| | City | Member | With Access ¹ | | Average Distance |
| | | # | # | % | 1 |
| With Access | Hartford, CT | 6,282 | 6,282 | 100.0 | 0.4 |
| | Bridgeport, CT | 4,753 | 4,753 | 100.0 | 0.3 |
| | New Haven, CT | 4,529 | 4,529 | 100.0 | 0.4 |
| | Waterbury, CT | 4,208 | 4,208 | 100.0 | 0.4 |
| | New Britain, CT | 2,620 | 2,620 | 100.0 | 0.6 |
| | Stamford, CT | 2,096 | 2,096 | 100.0 | 0.5 |
| | Meriden, CT | 1,952 | 1,952 | 100.0 | 0.6 |
| | East Hartford, CT | 1,620 | 1,620 | 100.0 | 0.4 |
| | Danbury, CT | 1,583 | 1,583 | 100.0 | 0.6 |
| | Manchester, CT | 1,552 | 1,552 | 100.0 | 0.5 |
| | West Hartford, CT | 1,519 | 1,519 | 100.0 | 0.3 |
| | Norwalk, CT | 1,483 | 1,483 | 100.0 | 0.5 |
| | Bristol, CT | 1,395 | 1,395 | 100.0 | 0.6 |
| | Hamden, CT | 1,346 | 1,346 | 100.0 | 0.6 |
| | West Haven, CT | 1,221 | 1,221 | 100.0 | 0.7 |
| | Middletown, CT | 1,155 | 1,155 | 100.0 | 0.6 |
| | Torrington, CT | 1,123 | 1,123 | 100.0 | 0.6 |
| | Norwich, CT | 1,102 | 1,102 | 100.0 | 0.8 |
| | New London, CT | 1,092 | 1,092 | 100.0 | 0.4 |
| | Stratford, CT | 771 | 771 | 100.0 | 0.6 |
| | Newington, CT | 761 | 761 | 100.0 | 0.8 |
| | Vernon Rockville, CT | 735 | 735 | 100.0 | 0.5 |
| | Shelton, CT | 727 | 727 | 100.0 | 1.0 |
| | Milford, CT | 696 | 696 | 100.0 | 0.8 |
| | Windsor, CT | 693 | 693 | 100.0 | 0.7 |
| | Wallingford, CT | 686 | 686 | 100.0 | 0.6 |
| | Willimantic, CT | 668 | 668 | 100.0 | 0.6 |
| | Naugatuck, CT | 638 | 638 | 100.0 | 0.6 |
| | Groton, CT | 619 | 619 | 100.0 | 0.7 |
| | Wethersfield, CT | 600 | 600 | 100.0 | 0.6 |
| | East Haven, CT | 597 | 597 | 100.0 | 0.8 |
| | Bloomfield, CT | 572 | 572 | 100.0 | 1.0 |
| | Greenwich, CT | 565 | 565 | 100.0 | 1.1 |
| | Trumbull, CT | 551 | 551 | 100.0 | 0.7 |
| | Enfield, CT | 530 | 530 | 100.0 | 1.0 |
| | Fairfield, CT | 510 | 510 | 100.0 | 0.6 |
| | Rocky Hill, CT | 506 | 506 | 100.0 | 0.5 |
| | Southington, CT | 405 | 405 | 100.0 | 0.7 |
| | Glastonbury, CT | 400 | 400 | 100.0 | 0.9 |
| | Ansonia, CT | 379 | 379 | 100.0 | 0.6 |
| Southbury, CT | 370 | 370 | 100.0 | 1.3 | |
| Cromwell, CT | 369 | 369 | 100.0 | 0.5 | |
| Berlin, CT | 360 | 360 | 100.0 | 1.6 | |
| Cheshire, CT | 355 | 355 | 100.0 | 0.7 | |
| New Milford, CT | 348 | 348 | 100.0 | 0.9 | |

© 2023 Quest Analytics, LLC.

June 6, 2023

Access Analysis

1 in 15

Member Group

HUSKY C for PCPs

Provider Group

PCPs

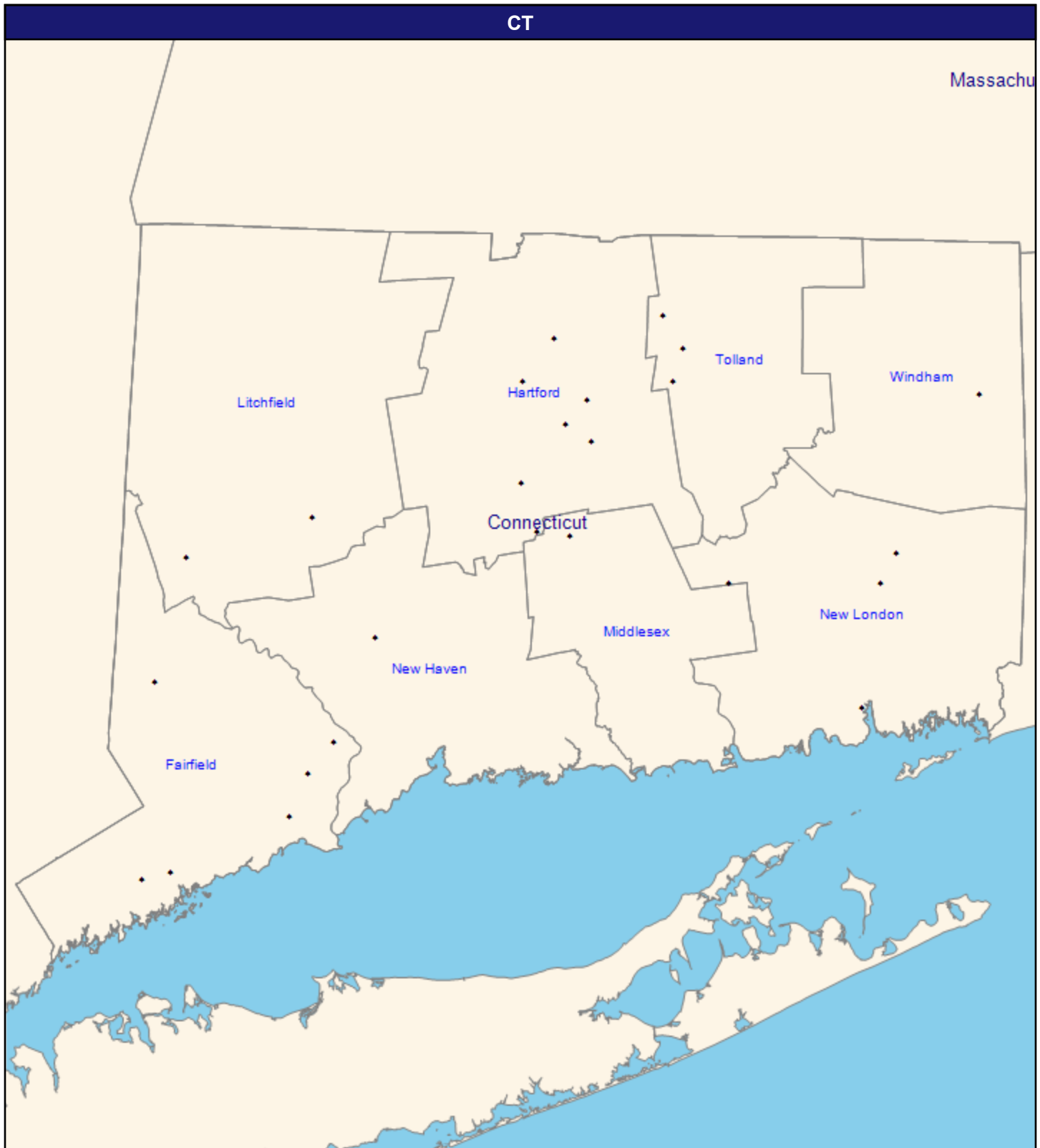
Areas With Access

Top 45 Cities in the market, sorted by the number of members with access

¹ The Access Standard is defined as (HUSKY C for PCPs) members accessing:

1 (PCPs) provider in 15 miles

HUSKY C Children for Pediatricians



© 2023 Quest Analytics, LLC.

June 6, 2023

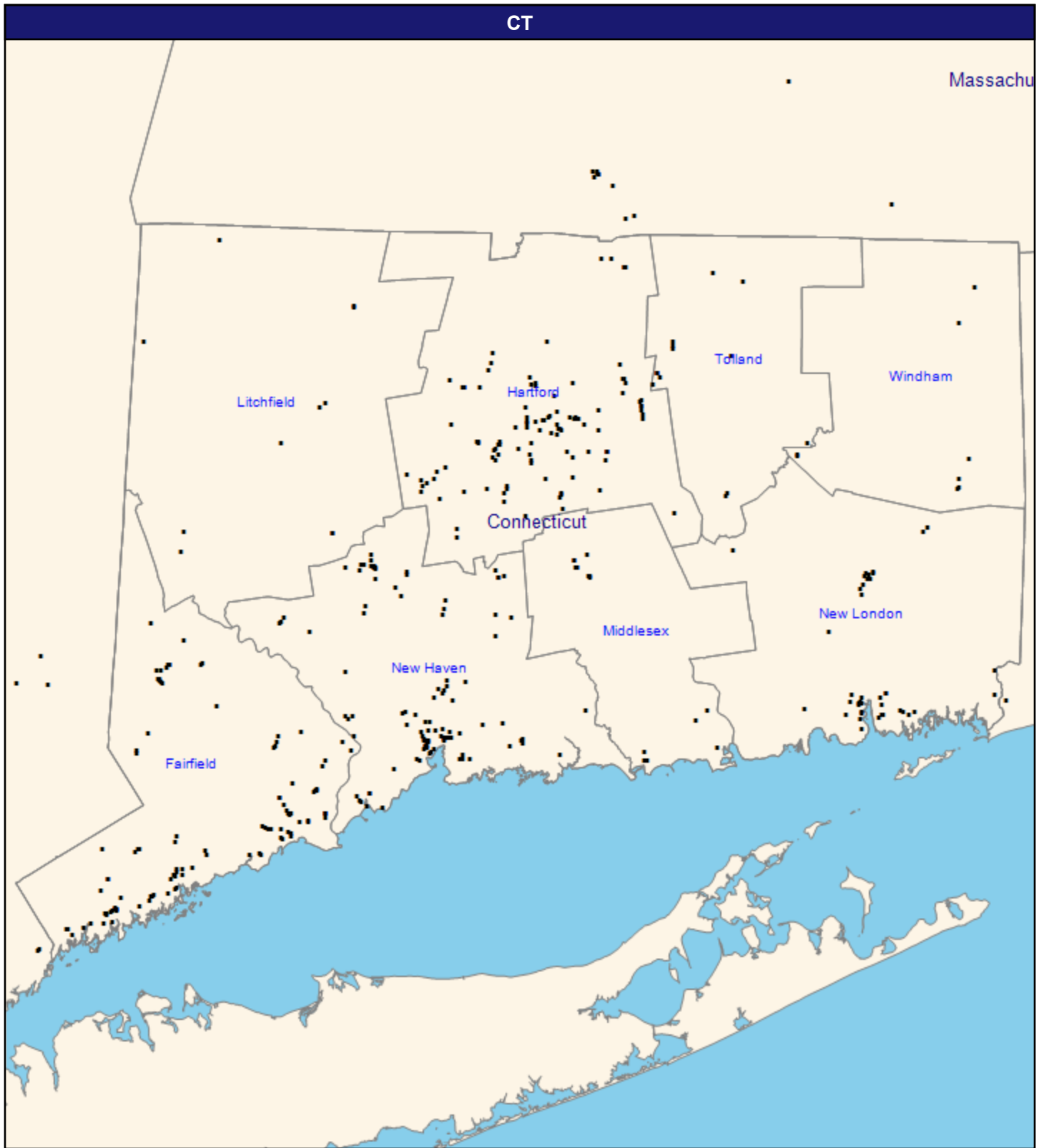
HUSKY C Children for Pediatricians

25 member locations

◆ All Members

13.69 miles

Pediatricians



© 2023 Quest Analytics, LLC.

June 6, 2023

Pediatricians

Total Providers: 653

■ All providers

13.69 miles

Access Summary By City

| All Members | | | |
|---------------------|---|-----------------------|---|
| Member Group | 25 members 25 (100.0%) members with access | Provider Group | 653 unique providers at 443 unique locations (1,571 total access points) |

| Key Geographic Areas | | | | | | |
|----------------------|--------|--------------------------|-------|---------------------|------------------|--|
| City | Member | With Access ¹ | | Counts ² | Average Distance | |
| | # | # | % | # | 1 | |
| East Hartford, CT | 2 | 2 | 100.0 | 23 | 1.7 | |
| Vernon Rockville, CT | 2 | 2 | 100.0 | 8 | 1.4 | |
| Beacon Falls, CT | 1 | 1 | 100.0 | 0 | 3.4 | |
| Bloomfield, CT | 1 | 1 | 100.0 | 11 | 1.2 | |
| Bridgeport, CT | 1 | 1 | 100.0 | 75 | 0.1 | |
| Colchester, CT | 1 | 1 | 100.0 | 8 | 3.7 | |
| Cromwell, CT | 1 | 1 | 100.0 | 0 | 2.9 | |
| Danbury, CT | 1 | 1 | 100.0 | 32 | 0.6 | |
| Danielson, CT | 1 | 1 | 100.0 | 0 | 7.2 | |
| Darien, CT | 1 | 1 | 100.0 | 18 | 2.7 | |
| East Berlin, CT | 1 | 1 | 100.0 | 0 | 2.7 | |
| Ellington, CT | 1 | 1 | 100.0 | 3 | 3.6 | |
| Hartford, CT | 1 | 1 | 100.0 | 107 | 0.9 | |
| Jewett City, CT | 1 | 1 | 100.0 | 4 | 3.9 | |
| New Britain, CT | 1 | 1 | 100.0 | 23 | 1.8 | |
| New London, CT | 1 | 1 | 100.0 | 34 | 0.4 | |
| New Milford, CT | 1 | 1 | 100.0 | 6 | 1.1 | |
| Norwalk, CT | 1 | 1 | 100.0 | 38 | 0.7 | |
| Norwich, CT | 1 | 1 | 100.0 | 25 | 1.3 | |
| Shelton, CT | 1 | 1 | 100.0 | 40 | 1.1 | |
| Trumbull, CT | 1 | 1 | 100.0 | 40 | 2.0 | |
| Watertown, CT | 1 | 1 | 100.0 | 2 | 3.6 | |
| Windsor, CT | 1 | 1 | 100.0 | 2 | 1.1 | |

With Access

© 2023 Quest Analytics, LLC.

June 6, 2023

Access Analysis

1 in 15

Member Group

HUSKY C Children for Pediatricians

Provider Group

Pediatricians

Areas With Access

Top 45 Cities in the market, sorted by the number of members with access

¹ The Access Standard is defined as (HUSKY C Children for Pediatricians) members accessing:

1 (Pediatricians) provider in 15 miles

² Provider counts represent:

#: Provider access points



Community Health Network of CT, Inc.

***A report on the accessibility of the CMAP Provider
Network with Open Panels for HUSKY D members HUSKY Health Program***

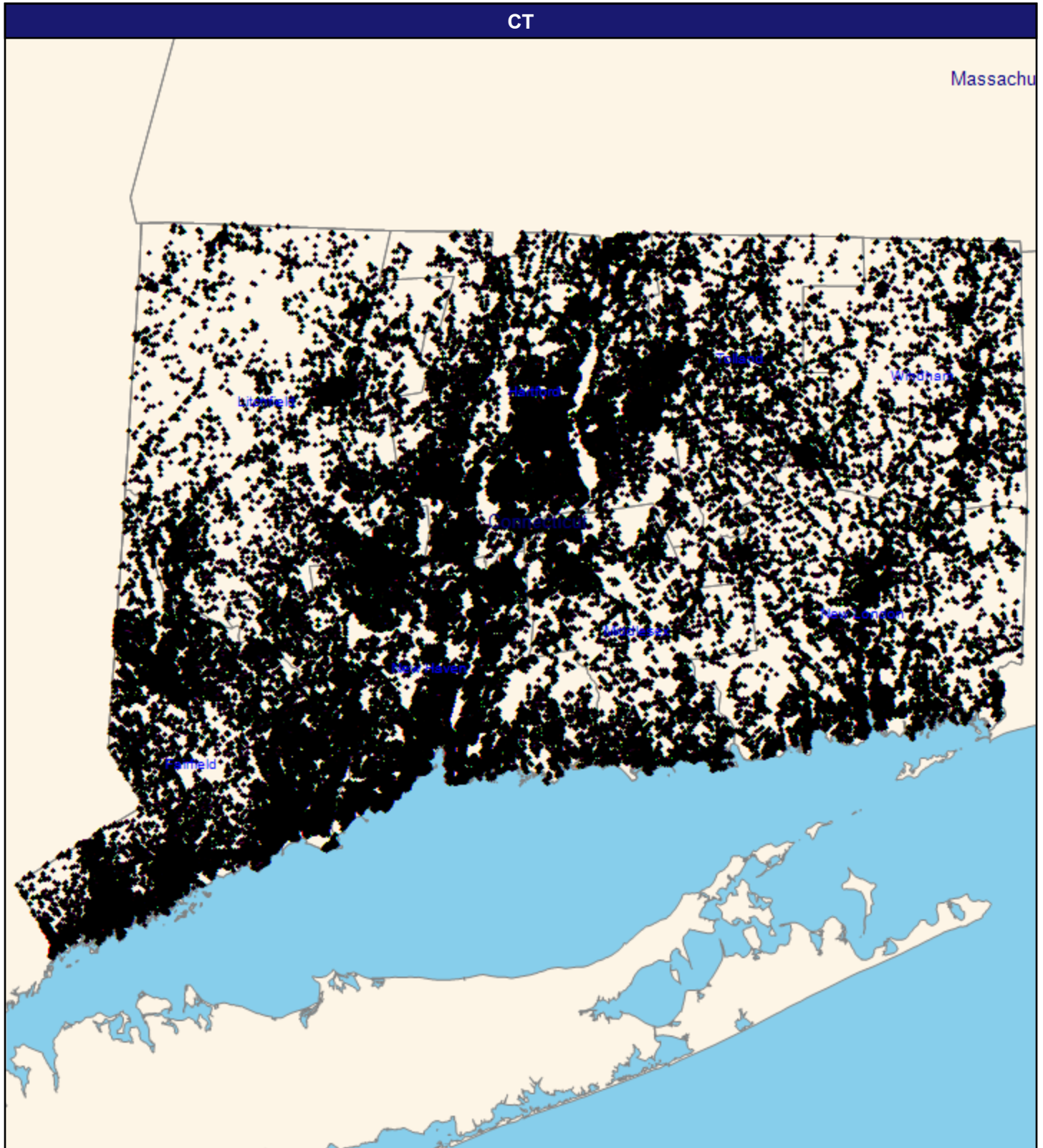
June 6, 2023



Ex E Gap and Network Adequacy Analysis #10 HUSKY D

June 6, 2023

HUSKY D for PCPs



© 2023 Quest Analytics, LLC.

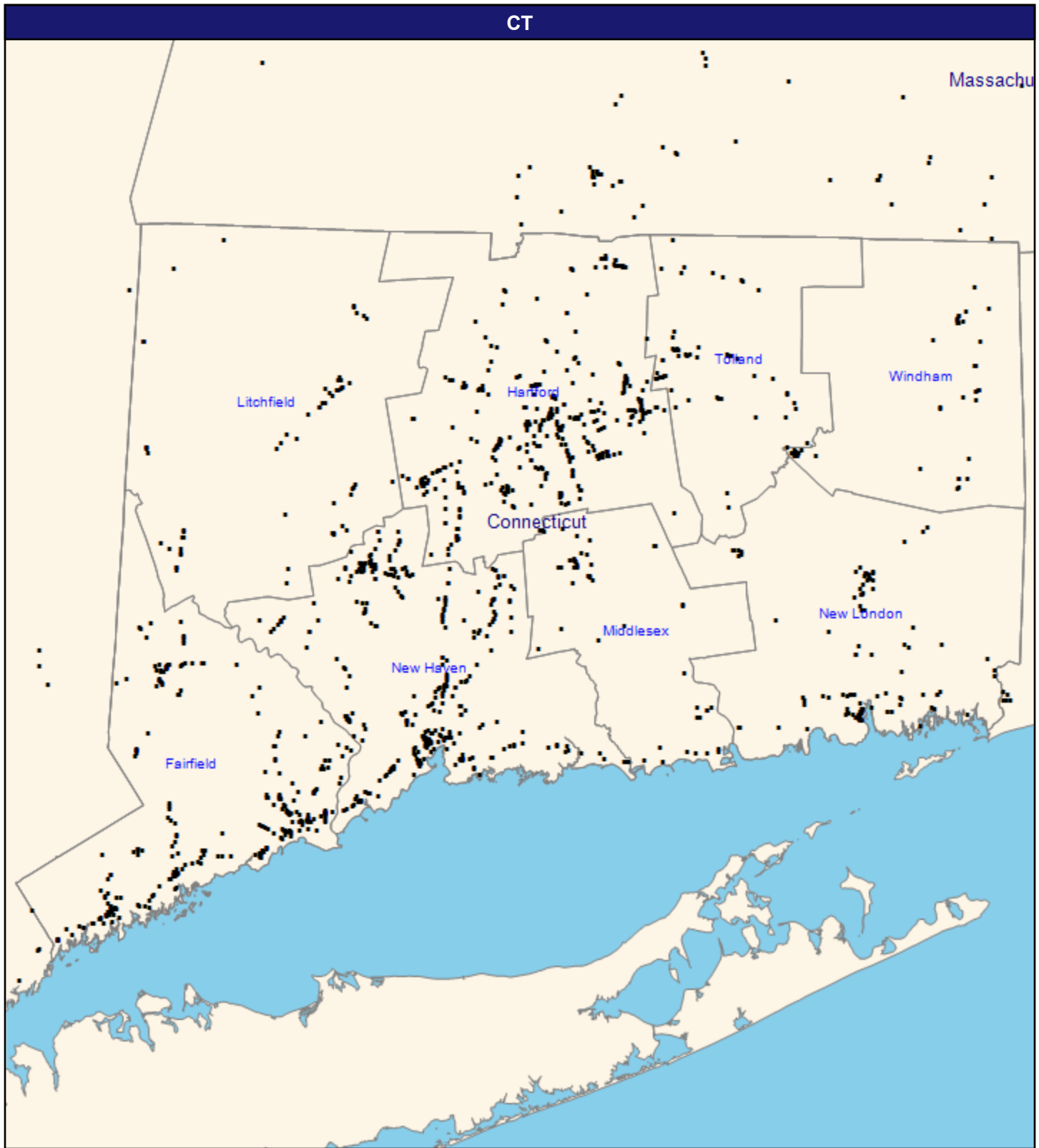
June 6, 2023

HUSKY D for PCPs

350,875 member locations

◆ All Members

PCPs



© 2023 Quest Analytics, LLC.

June 6, 2023

PCPs

Total Providers: 2,583

■ All providers

13.69 miles

Access Summary By City

| Members With Access | | | |
|---------------------|---|-----------------------|---|
| Member Group | 350,865 members 350,865 (100.0%) members with access | Provider Group | 2,583 unique providers at 1,400 unique locations (5,933 total access points) |

| Key Geographic Areas | | | | |
|----------------------|--------|--------------------------|-------|------------------|
| City | Member | With Access ¹ | | Average Distance |
| | # | # | % | 1 |
| Hartford, CT | 27,733 | 27,733 | 100.0 | 0.4 |
| Bridgeport, CT | 26,037 | 26,037 | 100.0 | 0.4 |
| Waterbury, CT | 23,591 | 23,591 | 100.0 | 0.5 |
| New Haven, CT | 23,143 | 23,143 | 100.0 | 0.4 |
| New Britain, CT | 13,359 | 13,359 | 100.0 | 0.7 |
| Stamford, CT | 11,753 | 11,753 | 100.0 | 0.6 |
| Meriden, CT | 8,644 | 8,644 | 100.0 | 0.7 |
| Norwalk, CT | 8,512 | 8,512 | 100.0 | 0.6 |
| East Hartford, CT | 7,723 | 7,723 | 100.0 | 0.5 |
| Danbury, CT | 7,657 | 7,657 | 100.0 | 0.9 |
| West Haven, CT | 7,281 | 7,281 | 100.0 | 0.6 |
| Bristol, CT | 6,997 | 6,997 | 100.0 | 0.6 |
| Manchester, CT | 6,908 | 6,908 | 100.0 | 0.5 |
| Hamden, CT | 5,607 | 5,607 | 100.0 | 0.7 |
| Norwich, CT | 5,569 | 5,569 | 100.0 | 0.9 |
| New London, CT | 5,299 | 5,299 | 100.0 | 0.4 |
| Stratford, CT | 5,263 | 5,263 | 100.0 | 0.7 |
| Middletown, CT | 5,260 | 5,260 | 100.0 | 0.8 |
| Torrington, CT | 4,723 | 4,723 | 100.0 | 0.8 |
| West Hartford, CT | 3,961 | 3,961 | 100.0 | 0.5 |
| Milford, CT | 3,818 | 3,818 | 100.0 | 0.9 |
| Naugatuck, CT | 3,487 | 3,487 | 100.0 | 0.8 |
| Windsor, CT | 3,474 | 3,474 | 100.0 | 0.9 |
| Enfield, CT | 3,439 | 3,439 | 100.0 | 1.2 |
| Willimantic, CT | 3,316 | 3,316 | 100.0 | 0.7 |
| East Haven, CT | 3,276 | 3,276 | 100.0 | 0.9 |
| Wallingford, CT | 3,077 | 3,077 | 100.0 | 0.8 |
| Vernon Rockville, CT | 3,011 | 3,011 | 100.0 | 0.5 |
| Shelton, CT | 2,882 | 2,882 | 100.0 | 1.2 |
| Groton, CT | 2,845 | 2,845 | 100.0 | 1.0 |
| Ansonia, CT | 2,750 | 2,750 | 100.0 | 0.6 |
| Fairfield, CT | 2,530 | 2,530 | 100.0 | 0.7 |
| Bloomfield, CT | 2,350 | 2,350 | 100.0 | 1.1 |
| Newington, CT | 2,325 | 2,325 | 100.0 | 0.8 |
| New Milford, CT | 2,182 | 2,182 | 100.0 | 1.4 |
| Branford, CT | 1,995 | 1,995 | 100.0 | 0.8 |
| Greenwich, CT | 1,875 | 1,875 | 100.0 | 1.0 |
| Southington, CT | 1,813 | 1,813 | 100.0 | 0.9 |
| Trumbull, CT | 1,747 | 1,747 | 100.0 | 0.9 |
| Wethersfield, CT | 1,739 | 1,739 | 100.0 | 0.8 |
| Plainville, CT | 1,622 | 1,622 | 100.0 | 0.7 |
| Derby, CT | 1,618 | 1,618 | 100.0 | 0.7 |
| North Haven, CT | 1,489 | 1,489 | 100.0 | 0.9 |
| Jewett City, CT | 1,403 | 1,403 | 100.0 | 2.1 |
| Seymour, CT | 1,388 | 1,388 | 100.0 | 1.3 |

© 2023 Quest Analytics, LLC.

June 6, 2023

Access Analysis

1 in 15

Member Group

HUSKY D for PCPs

Provider Group

PCPs

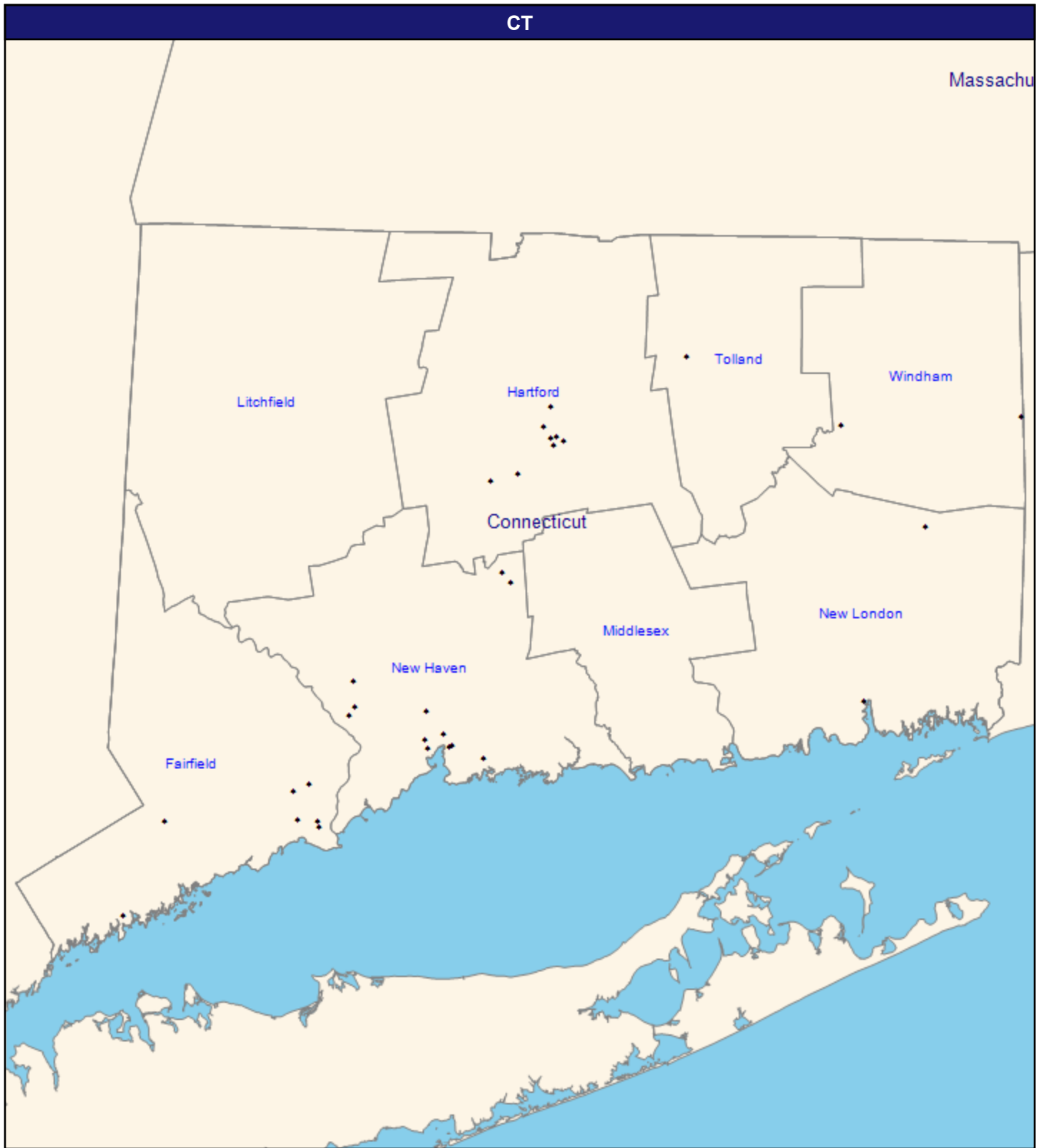
Areas With Access

Top 45 Cities in the market, sorted by the number of members with access

¹ The Access Standard is defined as (HUSKY D for PCPs) members accessing:

1 (PCPs) provider in 15 miles

HUSKY D Children for Pediatricians



© 2023 Quest Analytics, LLC.

June 6, 2023

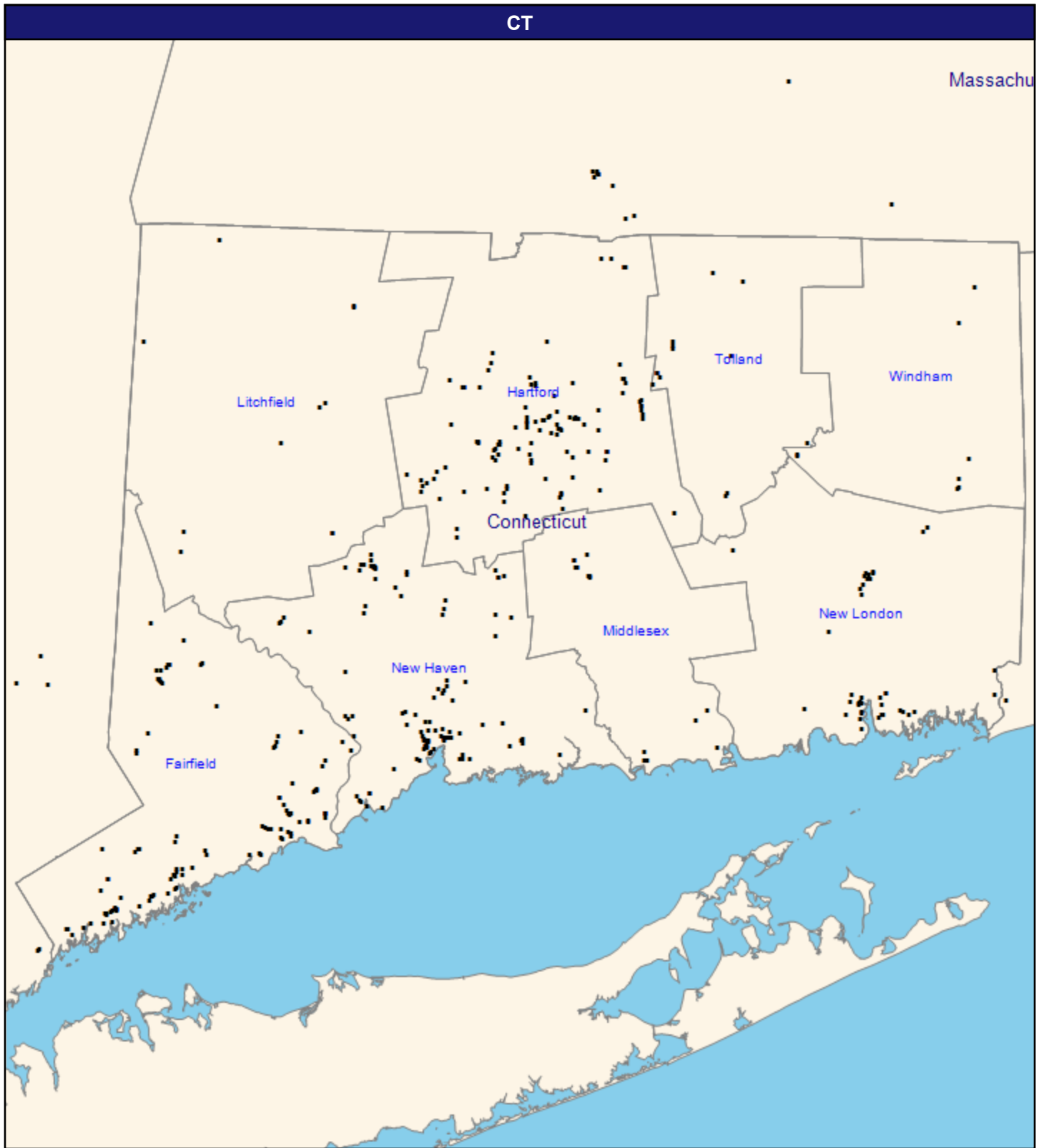
HUSKY D Children for Pediatricians

32 member locations

◆ All Members

13.69 miles

Pediatricians



© 2023 Quest Analytics, LLC.

June 6, 2023

Pediatricians

Total Providers: 653

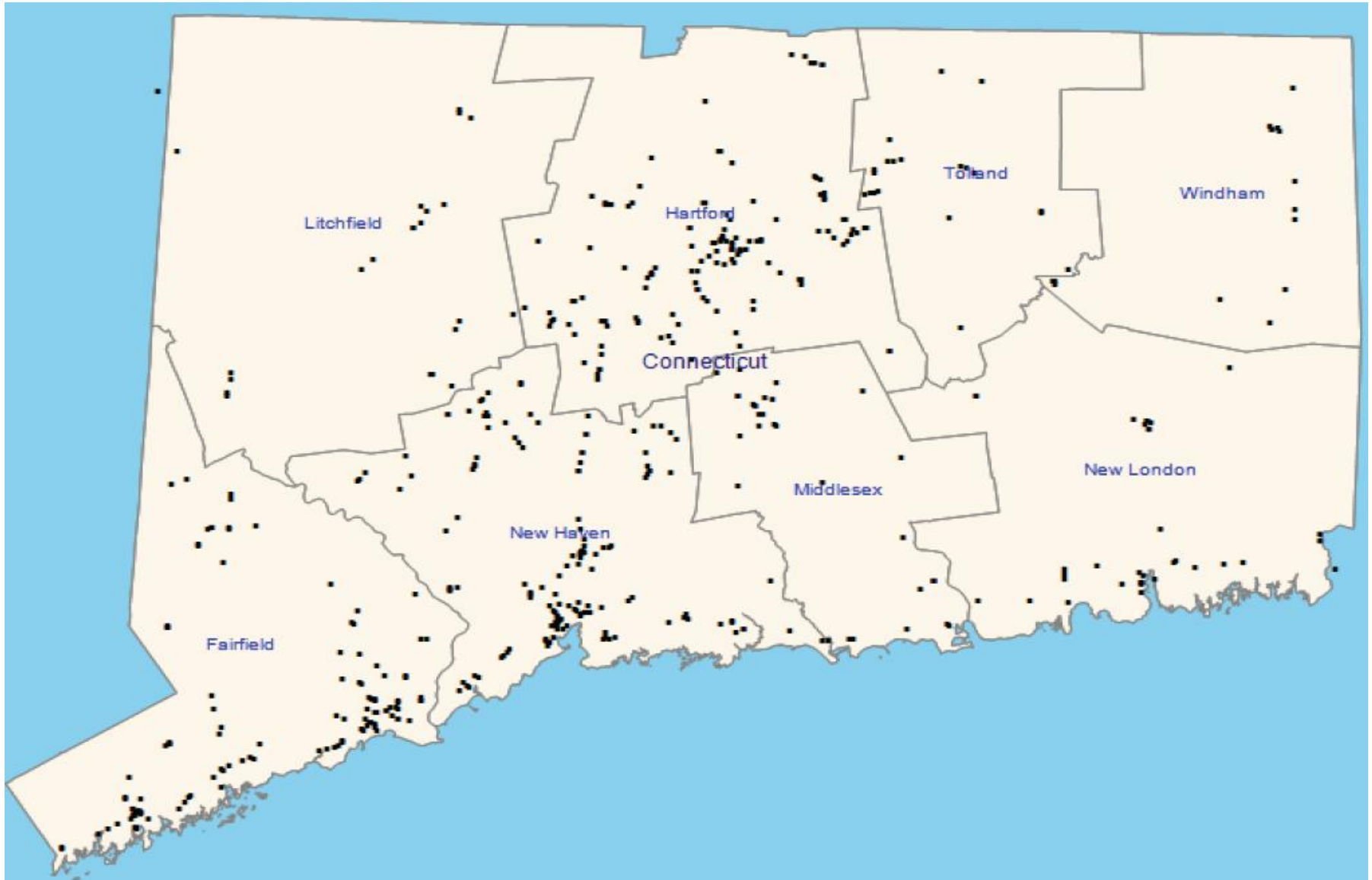
■ All providers

13.69 miles



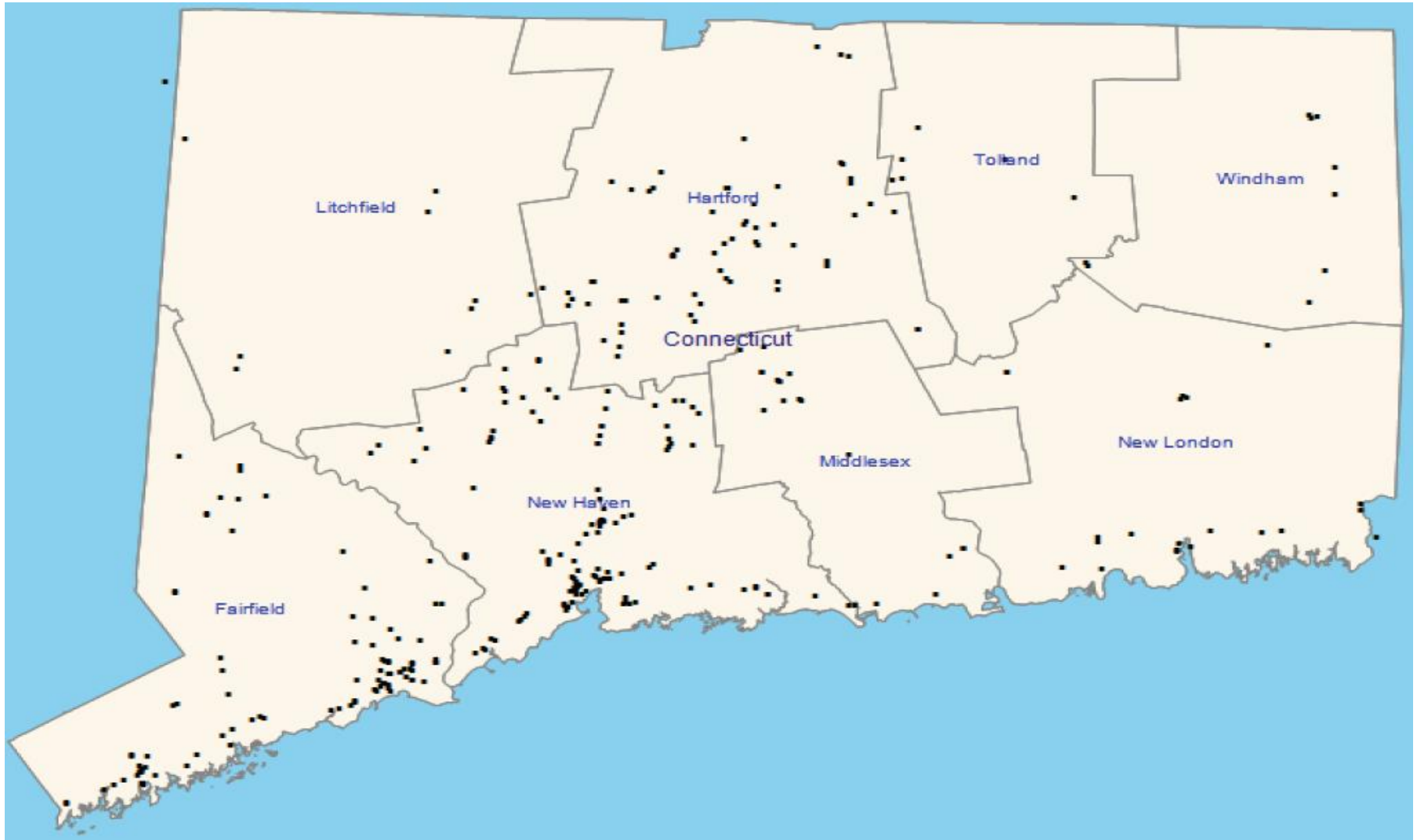
PCMH Practice Site Locations

All PCMH Program Practice Site Locations



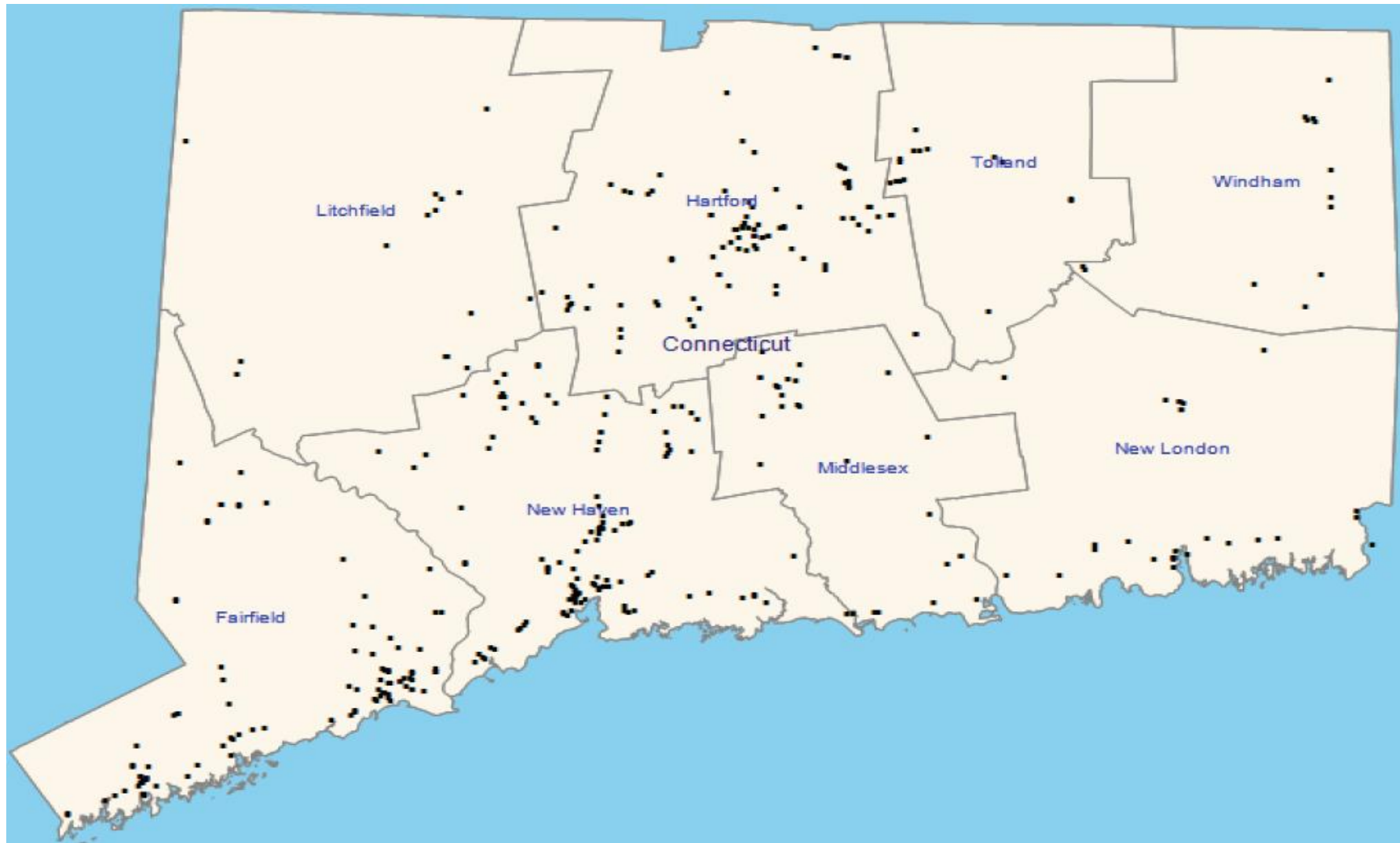
Note: Data is as of March 31, 2023 – Maps are updated quarterly.

Internal Medicine PCMH Program Practice Site Locations



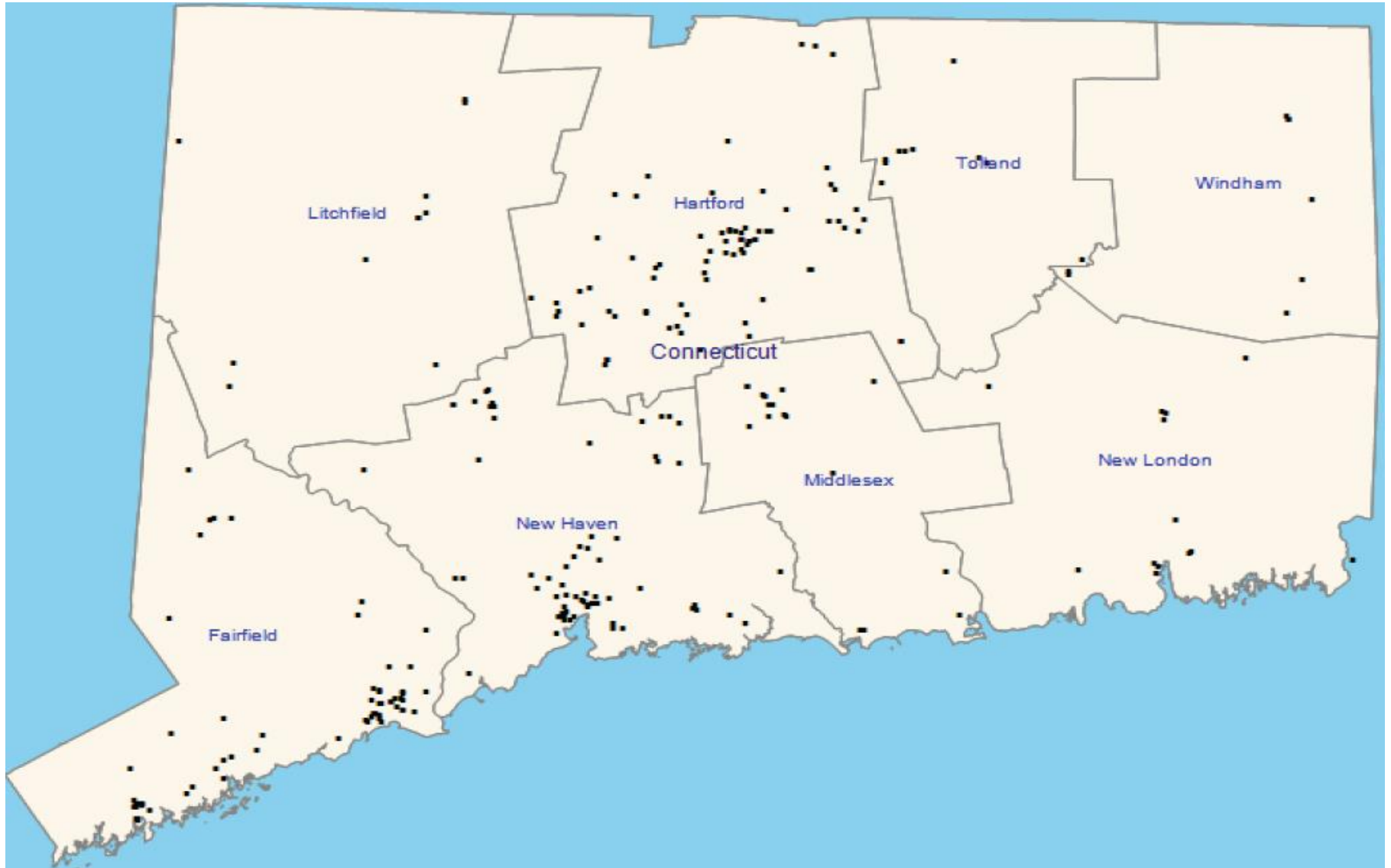
Note: Data is as of March 31, 2023 – Maps are updated quarterly.

Family Practice PCMH Program Practice Site Locations



Note: Data is as of March 31, 2023 – Maps are updated quarterly.

Pediatric PCMH Program Practice Site Locations



Note: Data is as of March 31, 2023 – Maps are updated quarterly.