

# SOCIAL DETERMINANTS OF HEALTH

JUNE 13, 2019

Presenters – Mercer and CHN



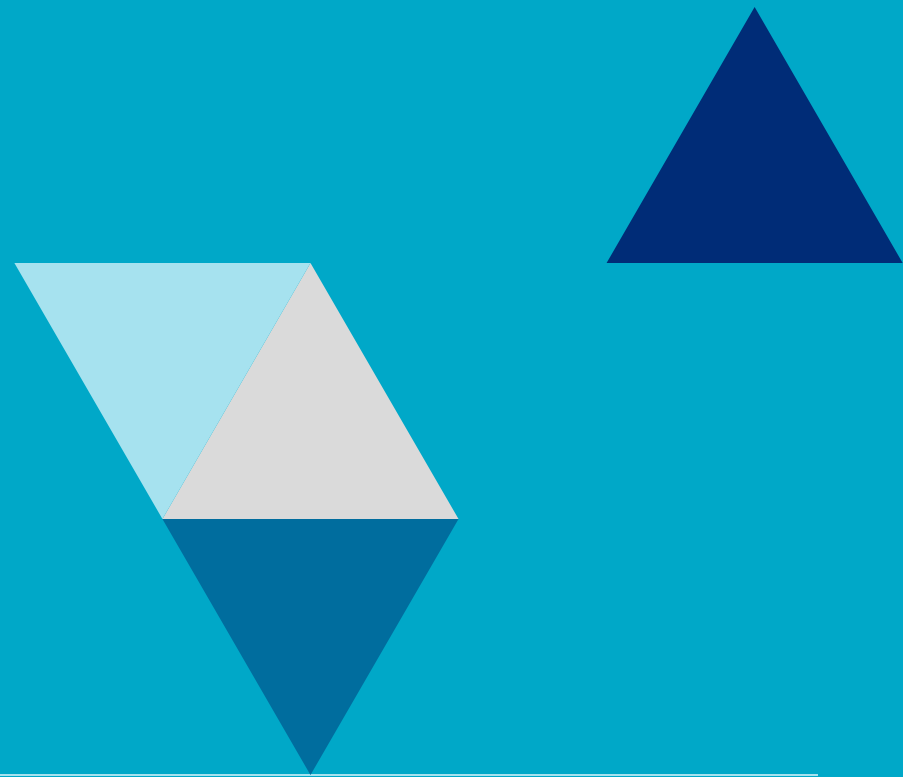
# TOPICS FOR DISCUSSION

- 1 • What are social determinants of health (SDoH)?
- 2 • What screening tools are available to assess for SDoH?
- 3 • SDoH Z-codes

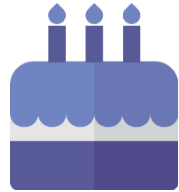
# SDOH QUIZ

1. Which one of these factors is NOT a social determinant of health?
  - A. Housing
  - B. Education
  - C. Social Support
  - D. Food
  - E. Violence
  - F. All of these factors are social determinants of health
2. True or False – 80% of an individual's health is tied to their physical environment, social determinants and behavioral factors.
3. What percentage of Connecticut residents live below the poverty line?
4. Thinking about where you live, are social determinants of health visible? If so, what are they?

# WHAT ARE SOCIAL DETERMINANTS OF HEALTH?



# HEALTH BEGINS WHERE WE LIVE, LEARN, WORK AND PLAY



LIVE



LEARN



WORK



PLAY

# WHAT ARE SOCIAL DETERMINANTS OF HEALTH?



**Housing**



**Food**



**Education**



**Transportation**



**Violence**



**Social Support**



**Employment**

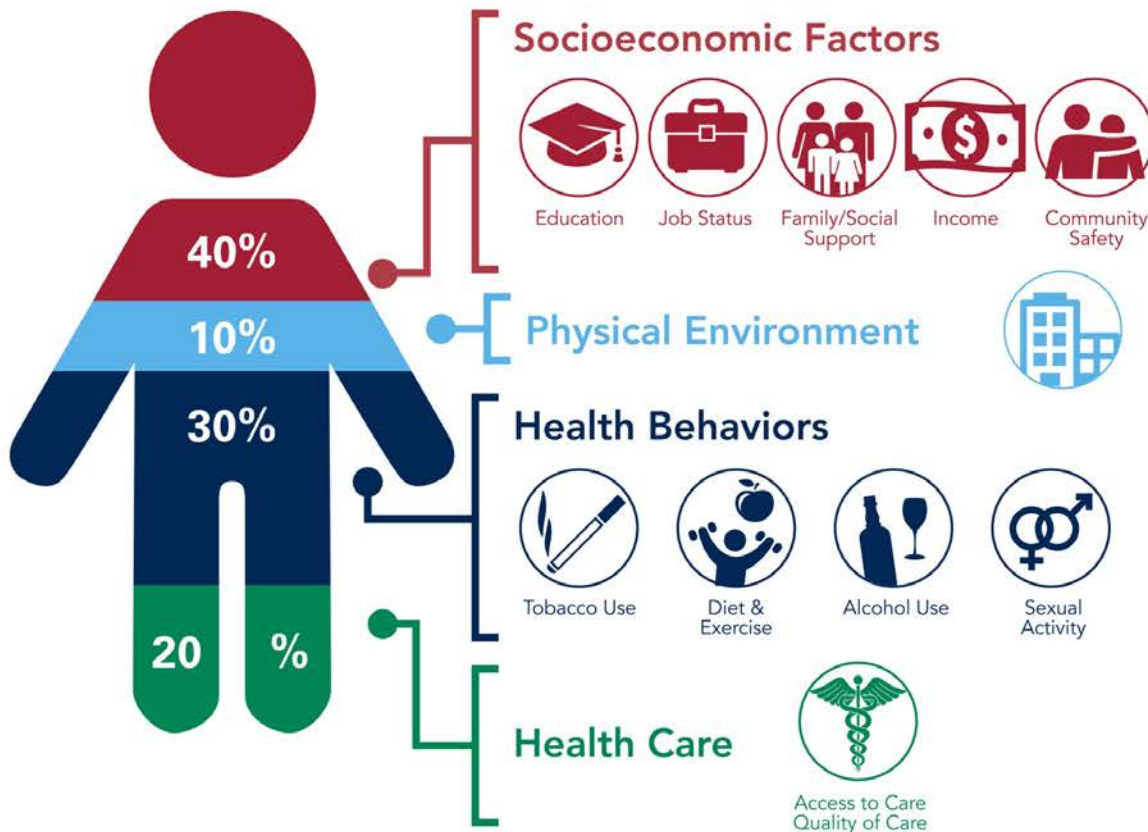


**Health Behaviors**

Source: American Hospital Association – Addressing Social Determinants of Health, 2018

# IMPACT OF SOCIAL DETERMINANTS OF HEALTH

SOCIAL DETERMINANTS OF HEALTH HAVE TREMENDOUS EFFECT ON AN INDIVIDUAL'S HEALTH REGARDLESS OF AGE, RACE, OR ETHNICITY.



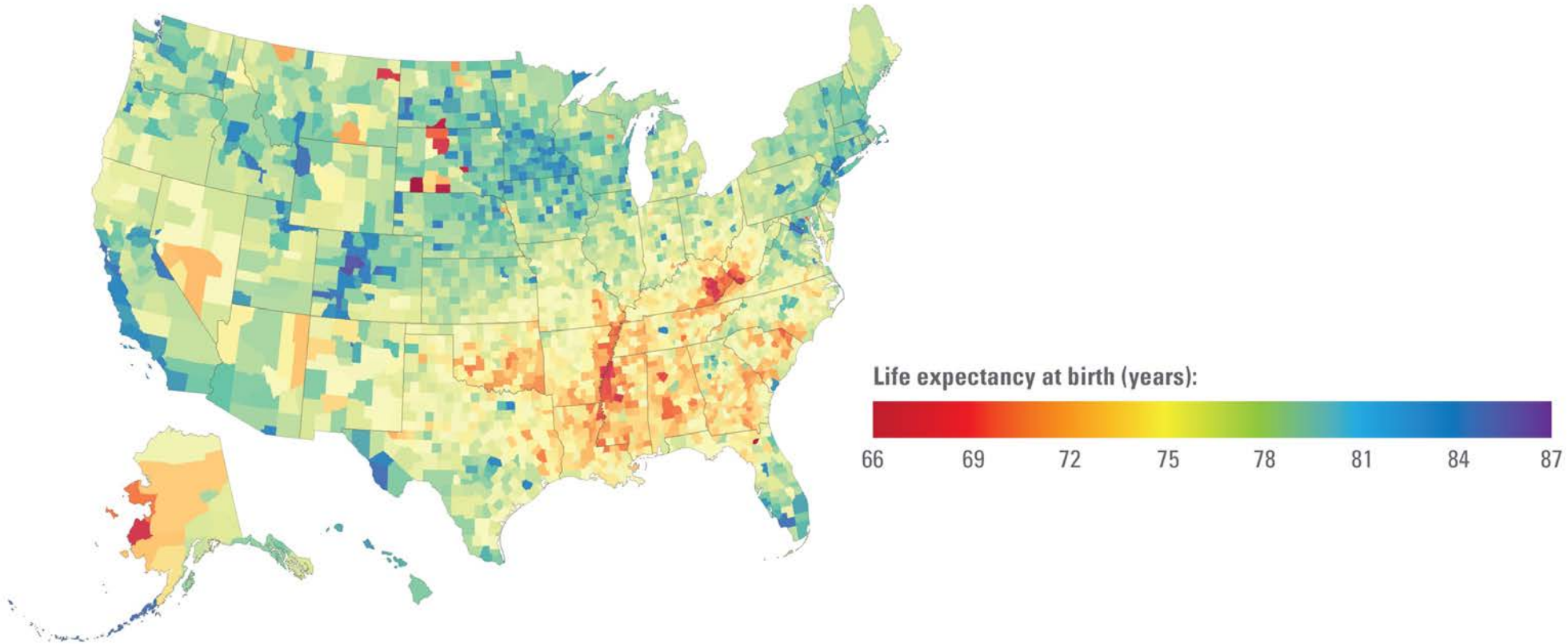
## SDoH Impact

- ➔ **20%** of a person's health and well-being is related to **access to care and quality of services**
- ➔ The **physical environment, social determinants and behavioral factors** drive **80%** of health outcomes

Source: Institute for Clinical Systems Improvement; Going Beyond Clinical Walls: Solving Complex Problems, 2014 Graphic designed by ProMedica.  
Source: American Hospital Association – Addressing Social Determinants of Health, 2018

# LIFE EXPECTANCY – NATIONAL RATES

WHERE WE LIVE CAN DETERMINE HOW WELL WE LIVE AND IS A SIGNIFICANT FACTOR OF LIFE EXPECTANCY.

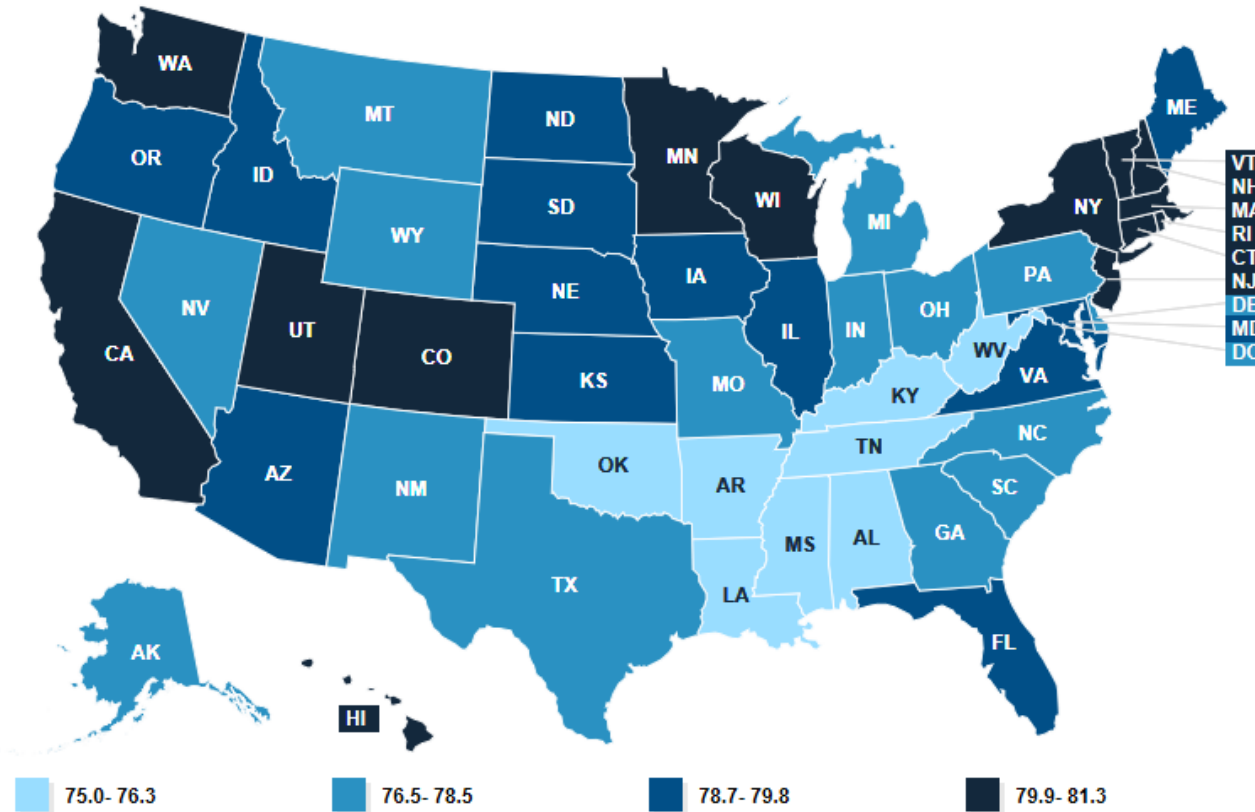


Source: Institute for Health Metrics and Evaluation, University of Washington, 2014

Source: American Hospital Association – Addressing Social Determinants of Health, 2018



# LIFE EXPECTANCY AT BIRTH (IN YEARS)



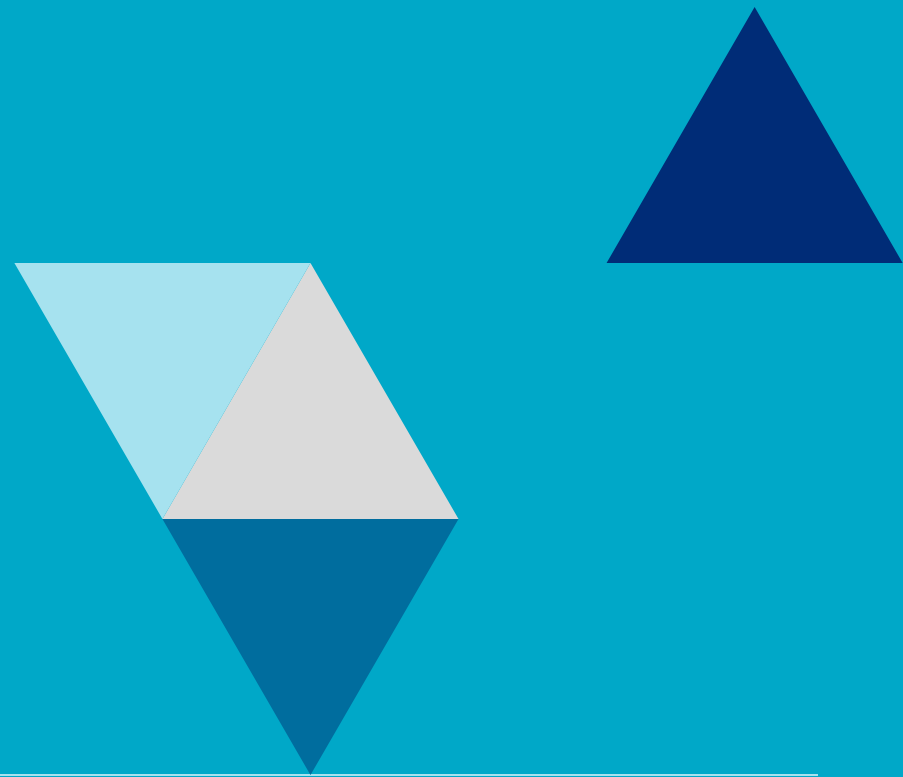
Source: KFF.org – Life Expectancy at Birth (in years) 2016

# HOW DOES CONNECTICUT COMPARE TO OTHER STATES?

DATA POINT	PERCENTAGE IN CONNECTICUT	RANKING BY STATE
Overall Poverty Rate	9.6%	5th
Children Living in Poverty	12.4%	9th
Working-Age Women Living in Poverty	10.3%	4th
Unemployment	4.7%	35th
High School Graduate	87.4%	15th
Disconnected Youth	9.0%	7th
Food Insecurity	12.2%	27th
Affordable Housing	64.0 units	29th
Assets and Savings	3.8%	4th

Source: <https://talkpoverty.org/state-year-report/connecticut-2018-report/>

# EXAMPLE SDOH SCREENING TOOLS



# EXAMPLE SDOH ASSESSMENT TOOLS

## PRAPARE

---

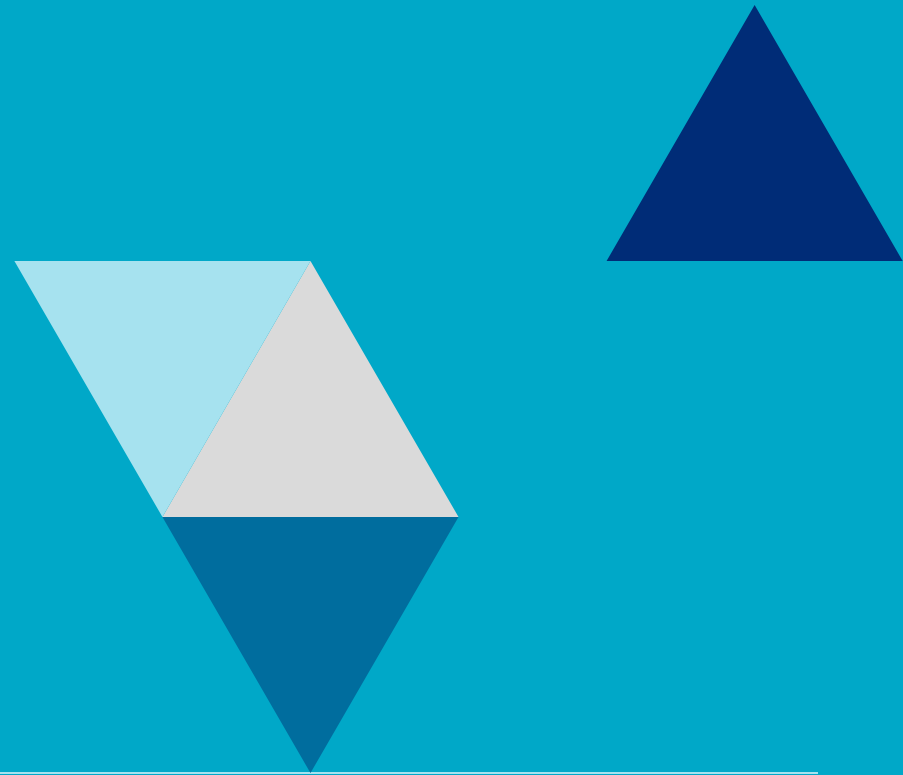
- Protocol for Responding to and Assessing Patient Assets, Risks and Experiences (PRAPARE)
- Aligns with national initiatives prioritizing social determinants
- Aligns with Meaningful Use Measures, etc.
- Electronic Health Record templates exist
- <http://www.nachc.org/research-and-data/prapare/>

## AHC HEALTH-RELATED SOCIAL NEEDS SCREENING TOOL

---

- Created to support the CMS Accountable Health Communities Model
- 10-item screening covers five domains of social needs (housing instability, food insecurity, transportation needs, utility needs, and interpersonal safety)
- <https://innovation.cms.gov/Files/work-sheets/ahcm-screeningtool.pdf>

# SDOH Z-CODES





**MERCER**

**MAKE TOMORROW, TODAY**