



SUD 1115

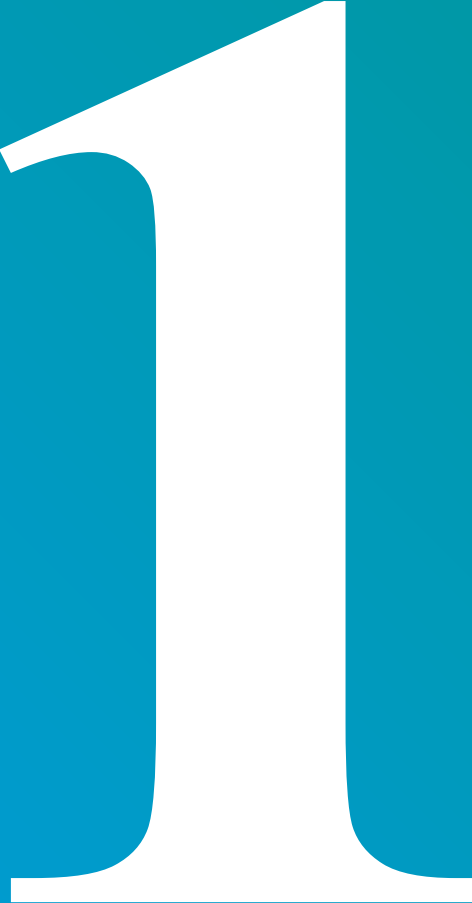
Potential Staffing Example

Note: this PowerPoint is an example of how staffing could be configured consistent with Connecticut standards for ASAM alignment. Please note: staffing standards are still draft and are subject to change

April 2021



Shared Staffing



Example: Facility A - ASAM 3.1 (6 residents)



Base Staffing

- Physician + On-call
- Clinical supervisor
- Service Coordinator
- House Manager
- Two Staff at all times (Techs)



MA/MA-Trainee/LADC
Group with up to 6
attendees (1 staff hour
total)



Peer Groups with up to 6
attendees (2 staff hours)



Peer with up to 35
individuals
(6 staff hours)



MA/MA-Trainee/LADC with
up to 35 individuals (6 staff
hours)



Individualized treatment Plan reflecting 3.1 interventions:

- **Two Clinical hours MA/MA-Trainee/LADC:** 1 hour individual/family; 1 hours group
- **Three Additional Programming Hours, example:**
 - **Peer:** 1 hour individual; 2 hour group

Example: Facility A – ASAM 3.7R (10 residents)



Base Staffing

- Physician + On-call
- Clinical supervisor
- Service Coordinator
- Tech Supervisor
- Two Staff at all times (Techs)



Additional Medical Staffing

- Physician/Medical Staff (Physician, APRN, or PA)
- RN
- LPNs



MA/MA-Trainee/LADC
Groups with up to 10
attendees (varying
times, but minimum of
13 staff hours total)



Peer Group with up to
10 attendees (3 staff
hours)



Non-MA/CADC/BA/RN
Group with up to 10
attendees
(8 staff hours)



Peer with up to 35
individuals
(20 staff hours)



Non-MA/ CADC/BA/RN
with up to 35
individuals (20 staff
hours)



MA/MA-Trainee/LADC
with up to 35
individuals (20 staff
hours)



Individualized treatment Plan reflecting 3.7R interventions:

- **15 Clinical Hours MA/MA-Trainee/LADC:** 2 hours individual/family; 13 hours group
- **15 Additional Programming Hours, example:**
 - **Non-MA/CADC/BA/RN:** 2 hours individual; 8 hours group
 - **Peer:** 2 hours individual; 3 hours group

Example: Potential Facility A Shared Staffing per 16 Residents

ASAM 3.1 (6 residents)



Shared Staffing

- Physician + On-call
- Shared Supervisor
- Shared Service Coordinator
- Shared House Manager/Tech Supervisor
- Two Staff at all times shared



Additional Medical Staffing

- Physician/ Medical Staff (MD/DO, APRN, or PA)
- Service Coordinator
- RN
- LPNs

ASAM 3.7R (10 residents)



Variable LOC Staffing per person



2 MA/MA-Trainee/LADC Groups with up to 12 attendees (varying times, but minimum of 13 hours each)



2 Peer Group with up to 12 attendees (3 staff hours each)



2 Non-MA/CADC/BA/RN Group(s) with up to 12 attendees (4 staff hours each)



Peer with up to 35 individuals (26 staff hours)



Non-MA/CADC/BA/RN with up to 35 individuals (20 staff hours)



MA/MA-Trainee/LADC with up to 35 individuals (26 staff hours)



Individualized treatment Plan reflecting 3.1 interventions:

- **Two Clinical hours MA/MA-Trainee/LADC:** 1 hour individual/family; 1 hour group
- **Three Additional Programming Hours, example:**
 - **Peer:** 1 hour individual; 2 hours group



Individualized treatment Plan reflecting 3.7R interventions:

- **15 Clinical Hours MA/MA-Trainee/LADC:** 2 hours individual/family; 13 hours group
- **15 Additional Programming Hours, example:**
 - **Non-MA/CADC/BA/RN:** 2 hours individual; 8 hours group
 - **Peer:** 2 hours individual; 3 hours group

Shared Staffing – Facility B



Example: Facility B – ASAM 3.5 (10 residents)



Base Staffing

- Medical staff + On-call
- Clinical Supervisor
- Service Coordinator
- RN
- Tech Supervisor
- Techs



MA/MA-Trainee/LADC
Group with up to 10
attendees (minimum of 8
staff hours total)



Peer Group with up to 10
attendees (3 staff hours)



Non-MA/CADC/BA/RN
Group with up to 10
attendees
(4 staff hours)



Peer with up to 35
individuals
(20 staff hours)



Non-MA/ CADC/BA/RN
with up to 35
individuals (10 staff
hours)



MA/MA-Trainee/LADC
with up to 35 individuals
(20 staff hours)



Individualized treatment Plan reflecting 3.5 interventions:

- **10 Clinical Hours MA/MA-Trainee/LADC:** 2 hours individual/family; 8 hours group
- **10 Additional Programming Hours, example:**
 - **Non-MA/CADC/BA/RN:** 1 hour individual; 4 hours group
 - **Peer:** 2 hours individual; 3 hours group

Example: Facility B – ASAM 3.7R (28 residents)



Base Staffing

- Medical staff + On-call
- Clinical Supervisor
- Service Coordinator
- RN
- Tech Supervisor
- Tech



Additional Medical Staffing

- Physician
- Medical Staff (Physician, APRN, or PA)
- Service Coordinator
- RN
- LPNs
- Techs



3 MA/MA-Trainee/LADC Groups with up to 12 attendees (varying times, but minimum of 13 staff hours each)



3 Peer Groups with up to 12 attendees (3 staff hours each)



3 Non-MA/CADC/BA/RN Groups with up to 12 attendees (8 staff hours each)



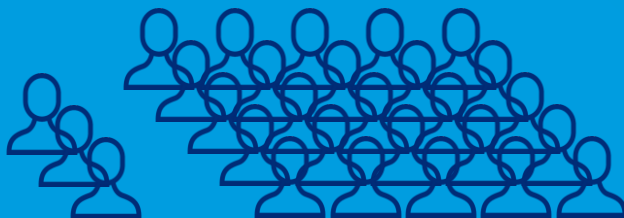
2 Peers with up to 35 individuals (56 staff hours)



2 Non-MA/CADC/BA/RN with up to 35 individuals (56 staff hours)



2 MA/MA-Trainee/LADC with up to 35 individuals (56 staff hours)



Individualized treatment Plan reflecting 3.7R interventions:

- **15 Clinical Hours MA/MA-Trainee/LADC:** 2 hours individual/family; 13 hours group
- **15 Additional Programming Hours, example:**
 - **Non-MA/CADC/BA/RN:** 2 hours individual; 8 hours group
 - **Peer:** 2 hours individual; 3 hours group

Example: Facility B – ASAM 3.7-WM (35 residents)



Base Staffing

- Medical staff + On-call
- Clinical Supervisor
- Service Coordinator
- RN
- Tech Supervisor
- Tech



Additional Medical Staffing

- Physician
- Medical Staff (Physician, APRN, or PA)
- RN
- LPN
- Service Coordinator
- Techs



3 MA/
MA-Trainee/LADC
Groups with up to 12
attendees (minimum of
1 staff hour each)



3 Peer Groups with up
to 12 attendees (1 staff
hour each)



3 Non-MA
/CADC/BA/RN Groups
with up to 12 attendees
(1 staff hour each)



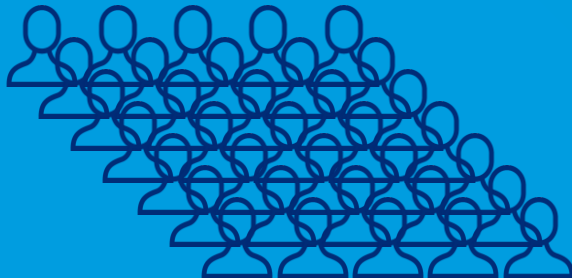
1 Peer with up to 35
individuals
(17.5 staff hours)



1 Non-MA/
CADC/BA/RN with up
to 35 individuals (17.5
staff hours)



2 MA/
MA-Trainee/LADC with
up to 35 individuals (35
staff hours)



Individualized treatment Plan reflecting 3.7-WM interventions:

- **2 Clinical Hours MA/MA-Trainee/LADC:** 1 hour individual/family; 1 hour group
- **3 Additional Programming Hours, example:**
 - **Non-MA/CADC/BA/RN:** 0.5 hours individual; 1 hour group
 - **Peer:** 0.5 hours individual; 1 hour group

Example: Potential Facility B shared staffing per 73 residents

ASAM 3.5 (10 residents)



Shared Staffing

- Medical Staff + On-call
- Shared Supervisor
- Shared Service Coordinator
- Tech Supervisors (3.5/3.7R)
- RN
- Techs

ASAM 3.7R (28 residents)



Additional Medical Staffing

- Physician
- Medical Staff (MD/DO, APRN, or PA)
- RN
- LPN
- Techs

ASAM 3.7WM (35 residents)



Variable LOC Staffing per person



At least 6 MA/MA-Trainee/LADC Groups with up to 12 attendees (varying between 1 and 13 staff hours each)



At least 6 Peer Groups with up to 12 attendees (varying between 1 and 3 staff hours each)



At least 6 Non-MA/CADC/BA/RN Group(s) with up to 12 attendees (varying between 1 and 8 staff hours each)



4 Peers with up to 35 individuals (93.5 staff hours total)



3 Non-MA/CADC/BA/RN with up to 35 individuals (83.5 staff hours)



4 MA/MA-Trainee/LADC with up to 35 individuals (111 staff hours)



Individualized treatment Plan reflecting 3.5 interventions:

- **10 Clinical Hours MA/MA-Trainee/LADC:** 2 hours individual/family; 8 hours group
- **10 Additional Programming Hours, example:**
 - **Non-MA/CADC/BA/RN:** 1 hour individual; 4 hours group
 - **Peer:** 2 hours individual; 3 hours group



Individualized treatment Plan reflecting 3.7R interventions:

- **15 Clinical Hours MA/MA-Trainee/LADC:** 2 hours individual/family; 13 hours group
- **15 Additional Programming Hours, example:**
 - **Non-MA/CADC/BA/RN:** 2 hours individual; 8 hours group
 - **Peer:** 2 hours individual; 3 hours group



Individualized treatment Plan reflecting 3.7-WM interventions:

- **2 Clinical Hours MA/MA-Trainee/LADC:** 1 hour individual/family; 1 hour group
- **3 Additional Programming Hours, example:**
 - **Non-MA/CADC/BA/RN:** 0.5 hours individual; 1 hour group
 - **Peer:** 0.5 hours individual; 1 hour group